

Data Path : Z:\pestpcbsrv\HPCHEM1\ECD_Q\Data\PQ061720\
 Data File : PQ048447.D
 Signal(s) : Signal #1: ECD1A.ch Signal #2: ECD2B.ch
 Acq On : 17 Jun 2020 10:01
 Operator : AJ\MA
 Sample : AR1660ICC050
 Misc :
 ALS Vial : 7 Sample Multiplier: 1

Instrument :
 ECD_Q
ClientSampleId :
 AR1660ICC050

Manual Integrations
APPROVED

Sohil
 6/18/2020 3:07:42 PM

Integration File signal 1: autoint1.e
 Integration File signal 2: autoint2.e
 Quant Time: Jun 17 12:17:54 2020
 Quant Method : Z:\pestpcbsrv\HPCHEM1\ECD_Q\Method\PQ061720.M
 Quant Title : GC EXTRACTABLES
 QLast Update : Wed Jun 17 12:15:42 2020
 Response via : Initial Calibration
 Integrator: ChemStation

Volume Inj. : 2 µl
 Signal #1 Phase : ZB-MR1 Signal #2 Phase: ZB-MR2
 Signal #1 Info : 30Mx0.32mmx 0.50µ Signal #2 Info : 30M x 0.32mm x 0.25µm

Compound	RT#1	RT#2	Resp#1	Resp#2	ng/ml	ng/ml

System Monitoring Compounds						
1) SA Tetrachlo...	5.291	4.289	32474403	14657444	3.885	3.649
2) SA Decachlor...	11.563	9.661	57693220	28164977	6.221	6.123
Target Compounds						
3) L1 AR-1016-1	6.622	5.554	15147361	7071685	49.709	46.405
4) L1 AR-1016-2	6.647	5.575	20872964	9630211	49.239	46.438
5) L1 AR-1016-3	6.712	5.768	12912757	4688672	49.542m	46.053m
6) L1 AR-1016-4	6.821	5.818	10611290	4117408	48.564m	50.168
7) L1 AR-1016-5	7.137	6.048	10900882	5670697	49.917m	49.827m
31) L7 AR-1260-1	8.318	7.147	21622696	11976282	55.764	53.119
32) L7 AR-1260-2	8.583	7.343	25496313	14437347	53.619	51.304
33) L7 AR-1260-3	8.954	7.500	20893617	13011299	55.465	50.406
34) L7 AR-1260-4	9.202	7.985	23657354	11414083	53.234	51.604
35) L7 AR-1260-5	9.555	8.230	47791343	26917869	51.640	47.838

(f)=RT Delta > 1/2 Window (#)=Amounts differ by > 25% (m)=manual int.

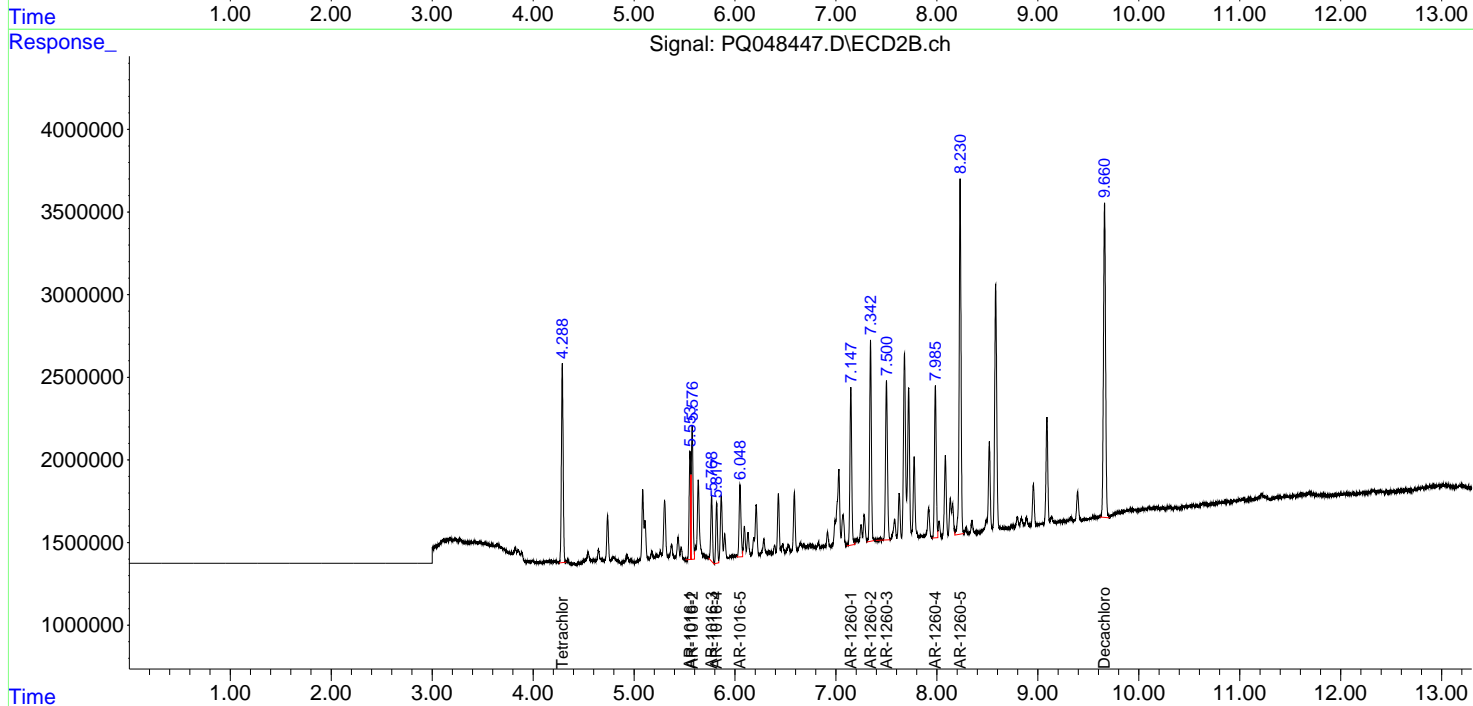
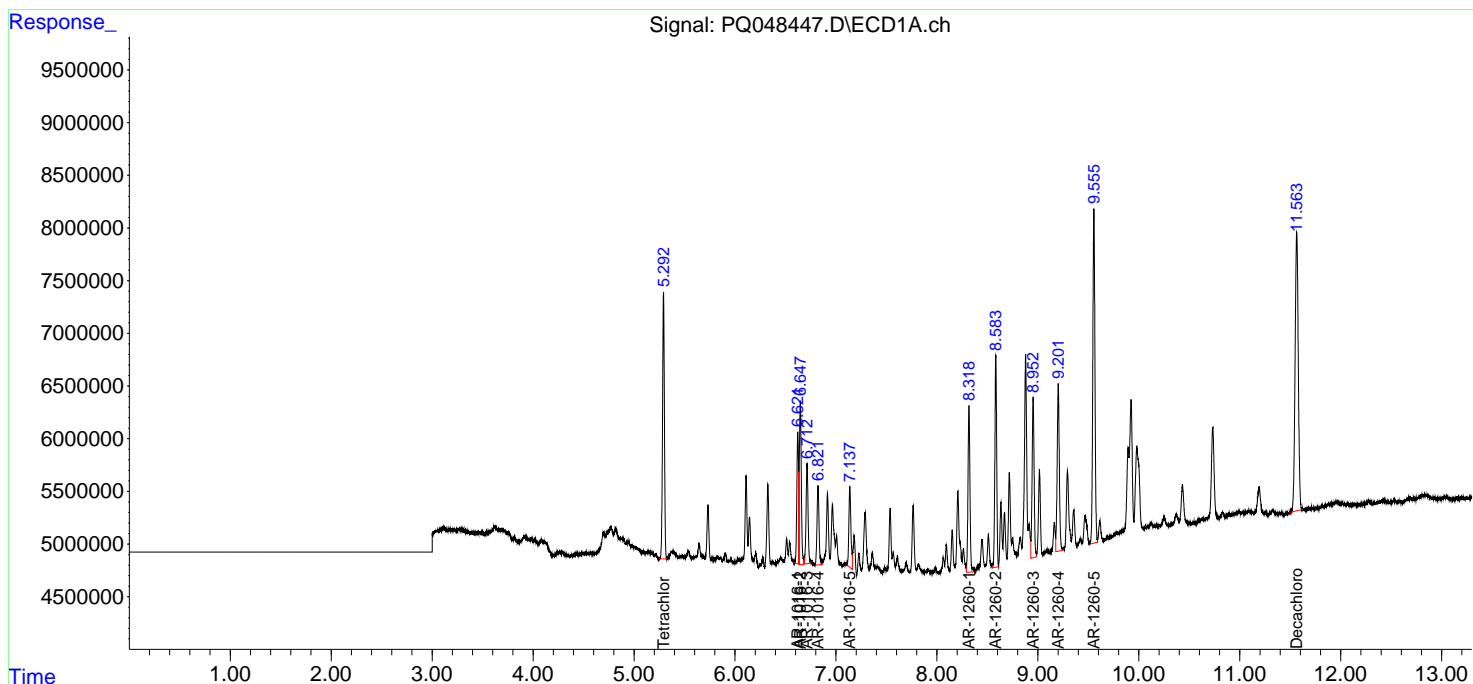
Data Path : Z:\pestpcbsrv\HPCHEM1\ECD_Q\Data\PQ061720\
 Data File : PQ048447.D
 Signal(s) : Signal #1: ECD1A.ch Signal #2: ECD2B.ch
 Acq On : 17 Jun 2020 10:01
 Operator : AJ\MA
 Sample : AR1660ICC050
 Misc :
 ALS Vial : 7 Sample Multiplier: 1

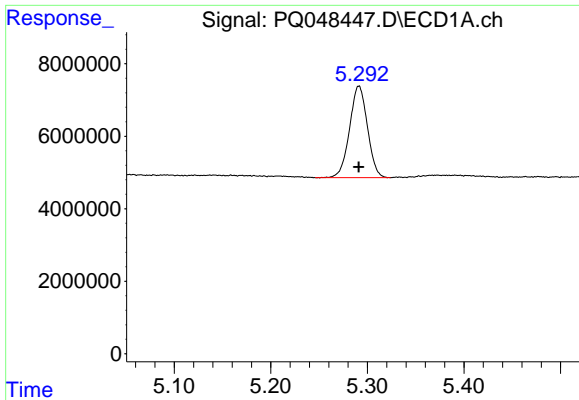
Instrument :
 ECD_Q
Client Sampled :
 AR1660ICC050

Manual Integrations
APPROVED
 Sohil
 6/18/2020 3:07:42 PM

Integration File signal 1: autoint1.e
 Integration File signal 2: autoint2.e
 Quant Time: Jun 17 12:17:54 2020
 Quant Method : Z:\pestpcbsrv\HPCHEM1\ECD_Q\Method\PQ061720.M
 Quant Title : GC EXTRACTABLES
 QLast Update : Wed Jun 17 12:15:42 2020
 Response via : Initial Calibration
 Integrator: ChemStation

Volume Inj. : 2 µl
 Signal #1 Phase : ZB-MR1 Signal #2 Phase: ZB-MR2
 Signal #1 Info : 30Mx0.32mmx 0.50µ Signal #2 Info : 30M x 0.32mm x 0.25µm

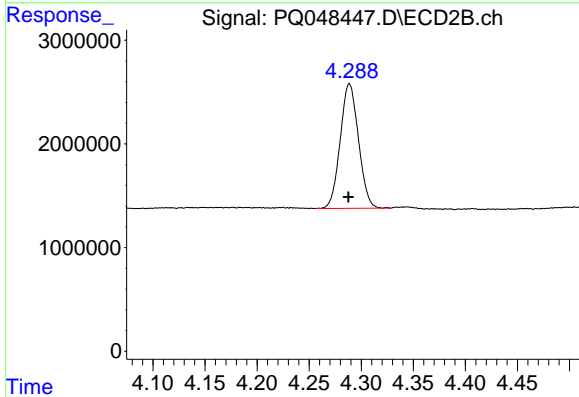




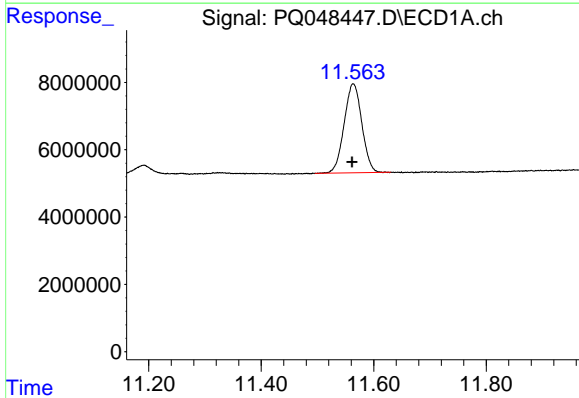
#1 Tetrachloro-m-xylene
 R.T.: 5.291 min
 Delta R.T.: 0.000 min
 Response: 32474403
 Conc: 3.88 ng/ml

Instrument :
 ECD_Q
ClientSampled :
 AR1660ICC050

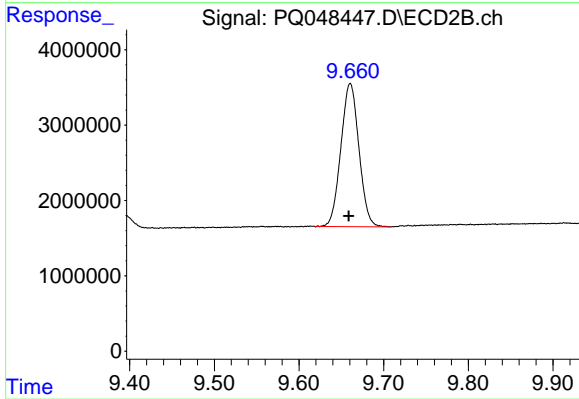
Manual Integrations
APPROVED
 Sohil
 6/18/2020 3:07:42 PM



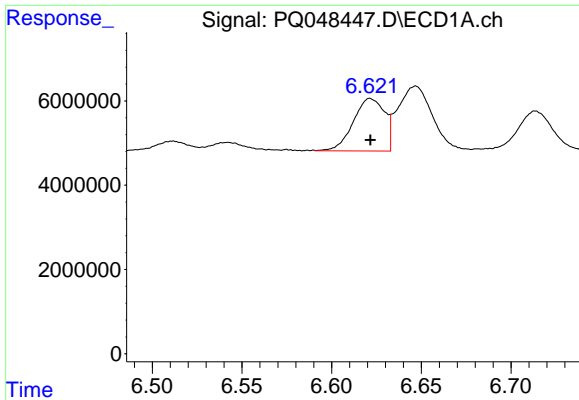
#1 Tetrachloro-m-xylene
 R.T.: 4.289 min
 Delta R.T.: 0.000 min
 Response: 14657444
 Conc: 3.65 ng/ml



#2 Decachlorobiphenyl
 R.T.: 11.563 min
 Delta R.T.: 0.002 min
 Response: 57693220
 Conc: 6.22 ng/ml



#2 Decachlorobiphenyl
 R.T.: 9.661 min
 Delta R.T.: 0.002 min
 Response: 28164977
 Conc: 6.12 ng/ml

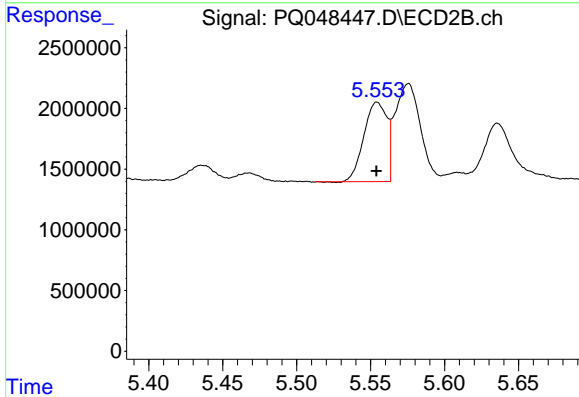


#3 AR-1016-1

R.T.: 6.622 min
 Delta R.T.: 0.000 min
 Response: 15147361
 Conc: 49.71 ng/ml

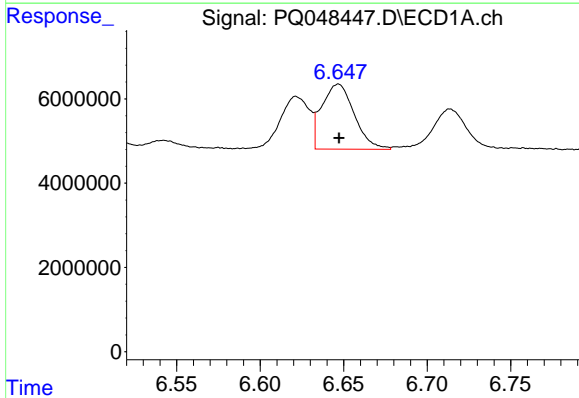
Instrument :
 ECD_Q
ClientSampled :
 AR1660ICC050

Manual Integrations
APPROVED
 Sohil
 6/18/2020 3:07:42 PM



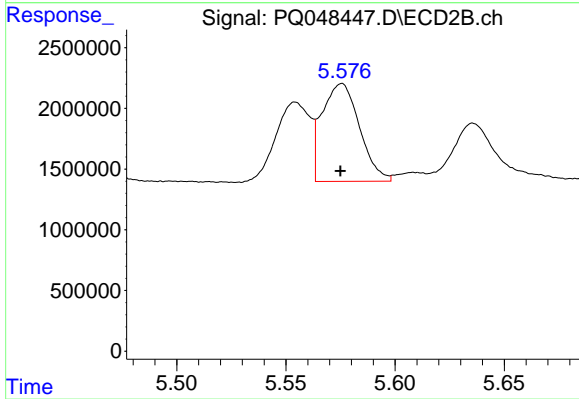
#3 AR-1016-1

R.T.: 5.554 min
 Delta R.T.: 0.000 min
 Response: 7071685
 Conc: 46.40 ng/ml



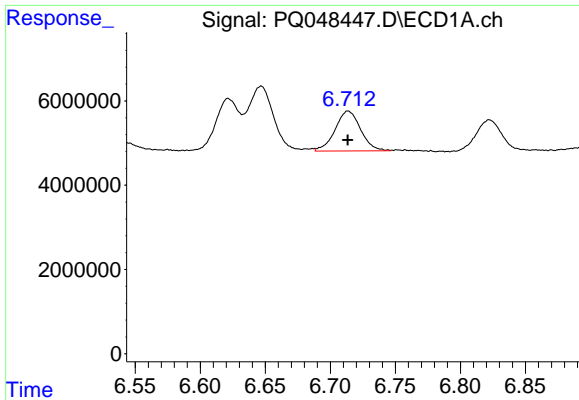
#4 AR-1016-2

R.T.: 6.647 min
 Delta R.T.: 0.000 min
 Response: 20872964
 Conc: 49.24 ng/ml



#4 AR-1016-2

R.T.: 5.575 min
 Delta R.T.: 0.000 min
 Response: 9630211
 Conc: 46.44 ng/ml

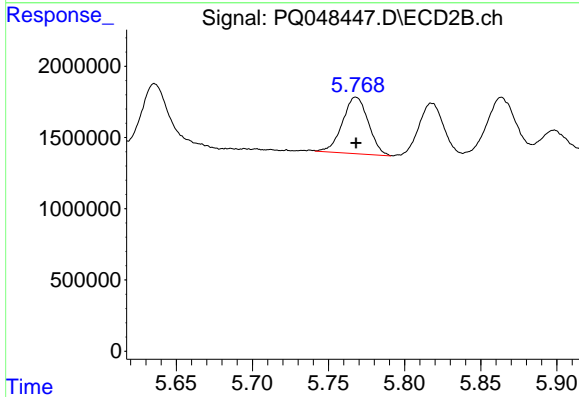


#5 AR-1016-3

R.T.: 6.712 min
 Delta R.T.: 0.000 min
 Response: 12912757
 Conc: 49.54 ng/ml m

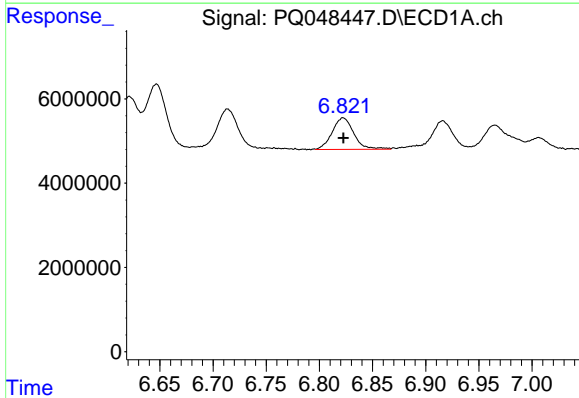
Instrument :
 ECD_Q
ClientSampled :
 AR1660ICC050

Manual Integrations
APPROVED
 Sohil
 6/18/2020 3:07:42 PM



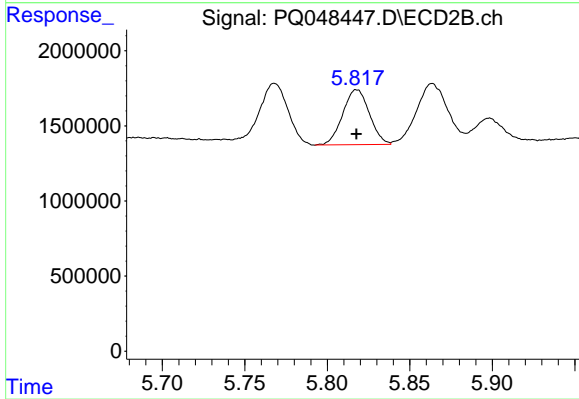
#5 AR-1016-3

R.T.: 5.768 min
 Delta R.T.: 0.000 min
 Response: 4688672
 Conc: 46.05 ng/ml m



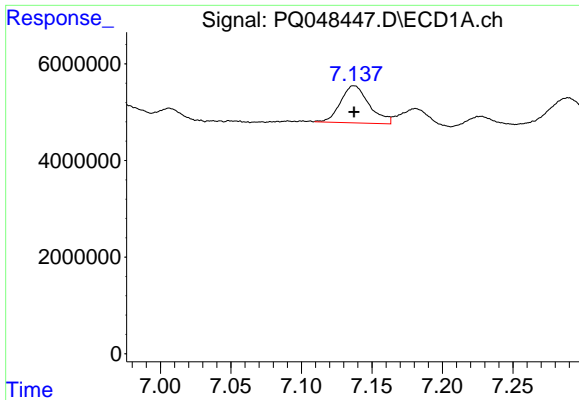
#6 AR-1016-4

R.T.: 6.821 min
 Delta R.T.: -0.001 min
 Response: 10611290
 Conc: 48.56 ng/ml m



#6 AR-1016-4

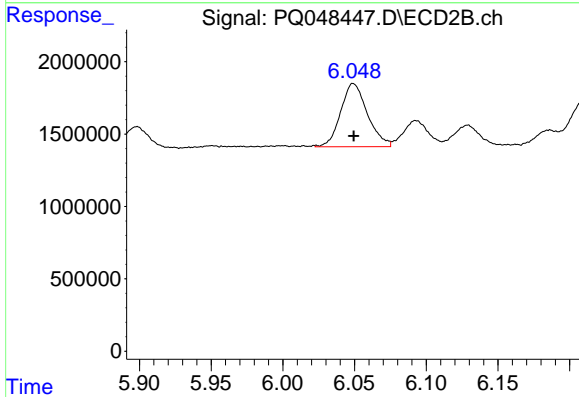
R.T.: 5.818 min
 Delta R.T.: 0.000 min
 Response: 4117408
 Conc: 50.17 ng/ml



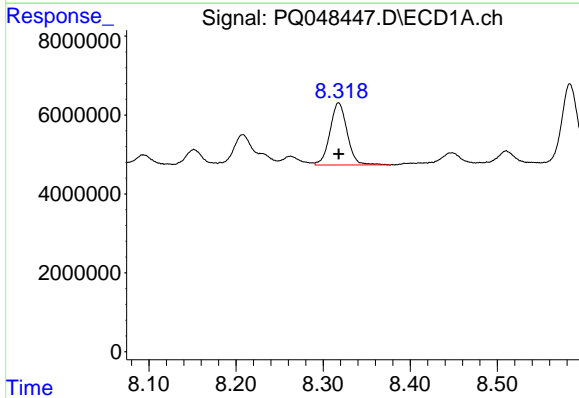
#7 AR-1016-5
 R.T.: 7.137 min
 Delta R.T.: 0.000 min
 Response: 10900882
 Conc: 49.92 ng/ml m

Instrument :
 ECD_Q
ClientSampled :
 AR1660ICC050

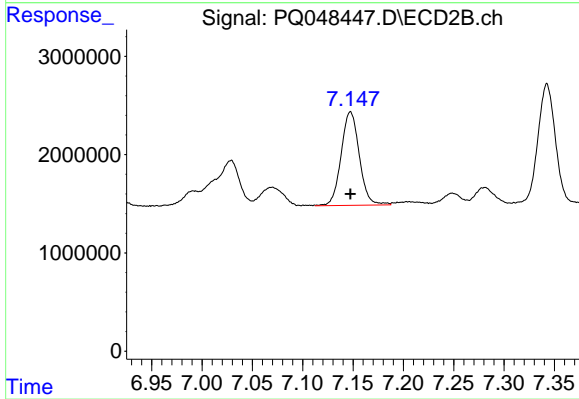
Manual Integrations
APPROVED
 Sohil
 6/18/2020 3:07:42 PM



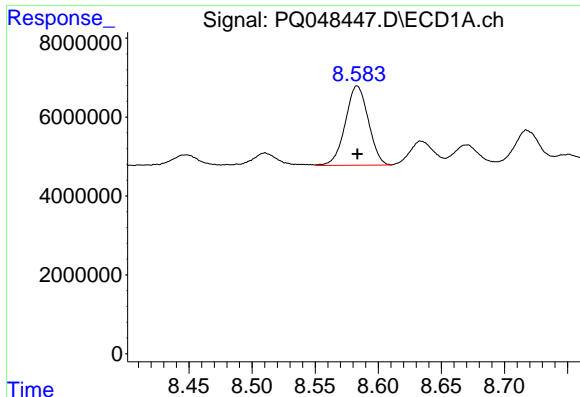
#7 AR-1016-5
 R.T.: 6.048 min
 Delta R.T.: -0.001 min
 Response: 5670697
 Conc: 49.83 ng/ml m



#31 AR-1260-1
 R.T.: 8.318 min
 Delta R.T.: 0.000 min
 Response: 21622696
 Conc: 55.76 ng/ml



#31 AR-1260-1
 R.T.: 7.147 min
 Delta R.T.: 0.000 min
 Response: 11976282
 Conc: 53.12 ng/ml



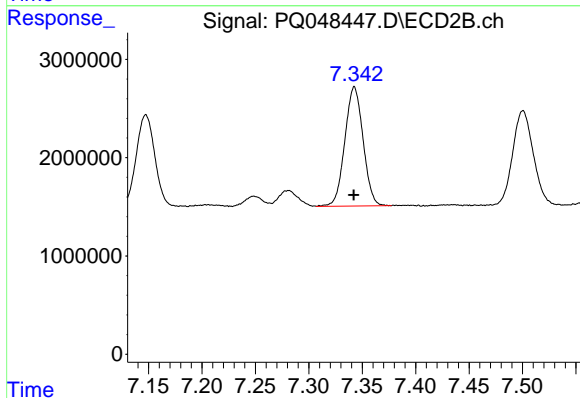
#32 AR-1260-2

R.T.: 8.583 min
 Delta R.T.: 0.000 min
 Response: 25496313
 Conc: 53.62 ng/ml

Instrument :
 ECD_Q
 ClientSampled :
 AR1660ICC050

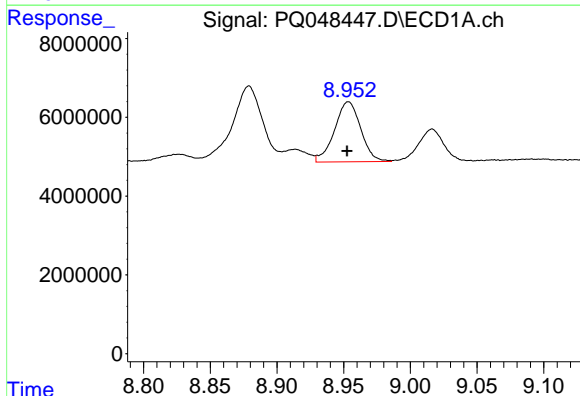
Manual Integrations
 APPROVED

Sohil
 6/18/2020 3:07:42 PM



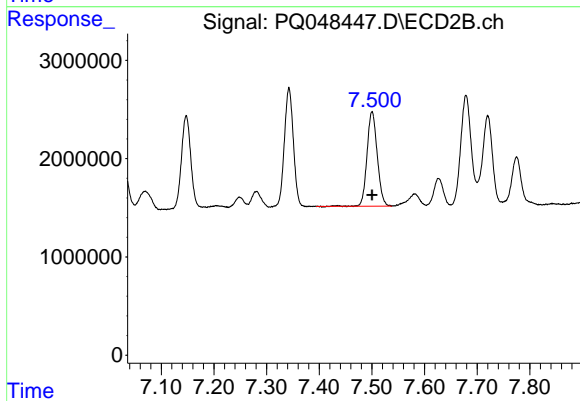
#32 AR-1260-2

R.T.: 7.343 min
 Delta R.T.: 0.000 min
 Response: 14437347
 Conc: 51.30 ng/ml



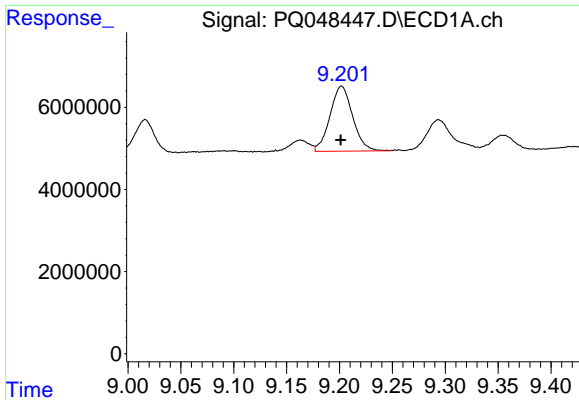
#33 AR-1260-3

R.T.: 8.954 min
 Delta R.T.: 0.000 min
 Response: 20893617
 Conc: 55.47 ng/ml



#33 AR-1260-3

R.T.: 7.500 min
 Delta R.T.: 0.000 min
 Response: 13011299
 Conc: 50.41 ng/ml

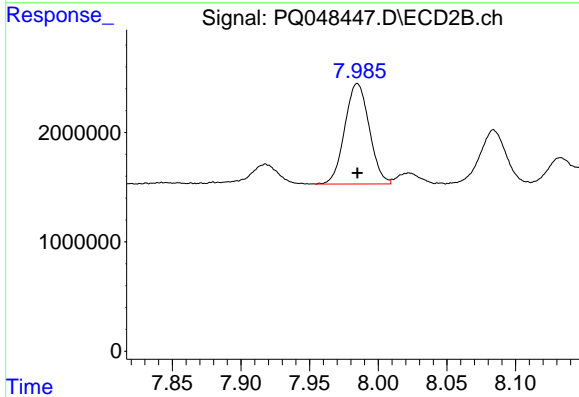


#34 AR-1260-4

R.T.: 9.202 min
 Delta R.T.: 0.000 min
 Response: 23657354
 Conc: 53.23 ng/ml

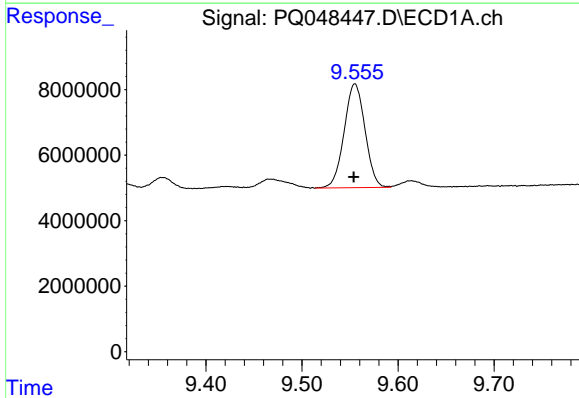
Instrument :
 ECD_Q
ClientSampled :
 AR1660ICC050

Manual Integrations
APPROVED
 Sohil
 6/18/2020 3:07:42 PM



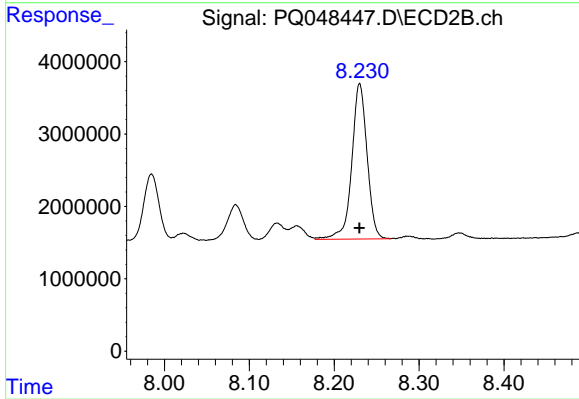
#34 AR-1260-4

R.T.: 7.985 min
 Delta R.T.: 0.000 min
 Response: 11414083
 Conc: 51.60 ng/ml



#35 AR-1260-5

R.T.: 9.555 min
 Delta R.T.: 0.001 min
 Response: 47791343
 Conc: 51.64 ng/ml



#35 AR-1260-5

R.T.: 8.230 min
 Delta R.T.: 0.000 min
 Response: 26917869
 Conc: 47.84 ng/ml