

Data Path : Z:\pestpcbsrv\HPCHEM1\ECD_Q\Data\PQ061721\
 Data File : PQ053913.D
 Signal(s) : Signal #1: ECD1A.ch Signal #2: ECD2B.ch
 Acq On : 17 Jun 2021 11:26
 Operator : DD\AJ
 Sample : M2679-03
 Misc :
 ALS Vial : 8 Sample Multiplier: 1

Instrument :
 ECD_Q
 ClientSampled :

Integration File signal 1: autoint1.e
 Integration File signal 2: autoint2.e
 Quant Time: Jun 18 00:09:58 2021
 Quant Method : Z:\pestpcbsrv\HPCHEM1\ECD_Q\Method\PQ061621CLP.M
 Quant Title : GC EXTRACTABLES
 QLast Update : Thu Jun 17 06:07:32 2021
 Response via : Initial Calibration
 Integrator: ChemStation

Volume Inj. : 1 µl
 Signal #1 Phase : ZB MR1 Signal #2 Phase: ZB MR2
 Signal #1 Info : 30Mx0.32mmx 0.5µm Signal #2 Info : 30M x 0.32mm x 0.25µm

Compound	RT#1	RT#2	Resp#1	Resp#2	ng/ml	ng/ml
System Monitoring Compounds						
1) SA Tetrachlo...	5.218	4.232	512.8E6	292.3E6	19.039	19.587
2) SA Decachlor...	11.405	9.567	1046.4E6	715.7E6	51.113	62.353
Target Compounds						
3) L1 AR-1016-1	6.546	5.492	38953058	19878711	42.998	35.847
4) L1 AR-1016-2	6.570	5.512	89769804	42618308	60.960	52.213
5) L1 AR-1016-3	6.637	5.704	31731529	25796011	35.415	60.694 #
6) L1 AR-1016-4	6.743	5.753	35852037	191.6E6	49.374	556.721 #
7) L1 AR-1016-5	7.056	5.983	163.2E6	97768024	242.899	225.247
8) L2 AR-1221-1	0.000	4.479	0	2112658	N.D.	12.814 #
9) L2 AR-1221-2	5.575	4.588	11192191	3236999	56.942	28.144 #
10) L2 AR-1221-3	0.000	4.678	0	1742141	N.D.	4.318 #
11) L3 AR-1232-1	0.000	4.678	0	1742141	N.D.	5.234 #
12) L3 AR-1232-2	6.248	5.512	30134815	42618308	95.215	115.441
13) L3 AR-1232-3	6.570	5.704	89769804	25796011	135.198	137.832
14) L3 AR-1232-4	6.743	5.798	35852037	69665381	112.289	427.575 #
15) L3 AR-1232-5	6.836	5.983	307.9E6	97768024	1330.458	562.012 #
16) L4 AR-1242-1	6.546	5.492	38953058	19878711	45.886	36.761
17) L4 AR-1242-2	6.570	5.512	89769804	42618308	62.602	54.678
18) L4 AR-1242-3	6.637	5.704	31731529	25796011	35.872	62.252 #
19) L4 AR-1242-4	6.743	5.798	35852037	69665381	49.888	174.390 #
20) L4 AR-1242-5	7.527	6.363	275.3E6	1064.5E6	356.321	1923.643 #
21) L5 AR-1248-1	6.546	5.492	38953058	19878711	66.776	54.924
22) L5 AR-1248-2	6.836	5.753	307.9E6	191.6E6	346.448	369.496
23) L5 AR-1248-3	7.056	5.798	163.2E6	69665381	164.547	130.389
24) L5 AR-1248-4	7.485	5.983	233.0E6	97768024	196.486	153.400
25) L5 AR-1248-5	7.527	6.406	275.3E6	106.7E6	230.783	155.891 #
26) L6 AR-1254-1	7.453	6.363	1456.1E6	1064.5E6	917.512	730.675
27) L6 AR-1254-2	7.680	6.521	2374.5E6	1458.4E6	950.715	1125.762
28) L6 AR-1254-3	8.065	6.944	2028.9E6	1411.3E6	787.165	674.773
29) L6 AR-1254-4	8.361	7.181	1515.5E6	888.6E6	758.889	641.211
30) L6 AR-1254-5	8.788	7.609	7878.4E6	5920.1E6	3965.879	3049.964
31) L7 AR-1260-1	8.231	7.078	4251.5E6	3143.4E6	3768.246	3660.872
32) L7 AR-1260-2	8.493	7.275	6572.5E6	4375.1E6	4689.219	3571.155
33) L7 AR-1260-3	8.860	7.430	3586.4E6	3809.7E6	3229.676	3749.125
34) L7 AR-1260-4	9.103	7.913	4111.8E6	2619.4E6	3949.472	2996.661
35) L7 AR-1260-5	9.449	8.159	9621.4E6	8268.3E6	4197.444	3553.121
36) L8 AR-1262-1	8.860	7.609	3586.4E6	5920.1E6	2052.572	9475.410 #
37) L8 AR-1262-2	9.449	8.159	9621.4E6	8268.3E6	3423.401	3256.399
38) L8 AR-1262-3	9.808	8.446	5111.5E6	1143.5E6	2829.257	1085.570 #
39) L8 AR-1262-4	9.861	8.509	2721.7E6	5233.3E6	1931.073	3036.114 #
40) L8 AR-1262-5	10.595	9.012	1930.2E6	1438.8E6	1974.349	1942.869
41) L9 AR-1268-1	9.808	8.446	5111.5E6	1143.5E6	1401.539	356.206 #

Data Path : Z:\pestpcbsrv\HPCHEM1\ECD_Q\Data\PQ061721\
 Data File : PQ053913.D
 Signal(s) : Signal #1: ECD1A.ch Signal #2: ECD2B.ch
 Acq On : 17 Jun 2021 11:26
 Operator : DD\AJ
 Sample : M2679-03
 Misc :
 ALS Vial : 8 Sample Multiplier: 1

Instrument :
 ECD_Q
 ClientSampleId :

Integration File signal 1: autoint1.e
 Integration File signal 2: autoint2.e
 Quant Time: Jun 18 00:09:58 2021
 Quant Method : Z:\pestpcbsrv\HPCHEM1\ECD_Q\Method\PQ061621CLP.M
 Quant Title : GC EXTRACTABLES
 QLast Update : Thu Jun 17 06:07:32 2021
 Response via : Initial Calibration
 Integrator: ChemStation

Volume Inj. : 1 µl
 Signal #1 Phase : ZB MR1 Signal #2 Phase: ZB MR2
 Signal #1 Info : 30Mx0.32mmx 0.5µm Signal #2 Info : 30M x 0.32mm x 0.25µm

	Compound	RT#1	RT#2	Resp#1	Resp#2	ng/ml	ng/ml
42)	L9 AR-1268-2	9.861	8.509	2721.7E6	5233.3E6	844.953	1951.697 #
43)	L9 AR-1268-3	10.125	8.719	50785661	32376698	17.400	13.930
44)	L9 AR-1268-4	10.595	9.012	1930.2E6	1438.8E6	1716.047	1681.596
45)	L9 AR-1268-5	11.041	9.310	334.5E6	229.0E6	38.798	37.115

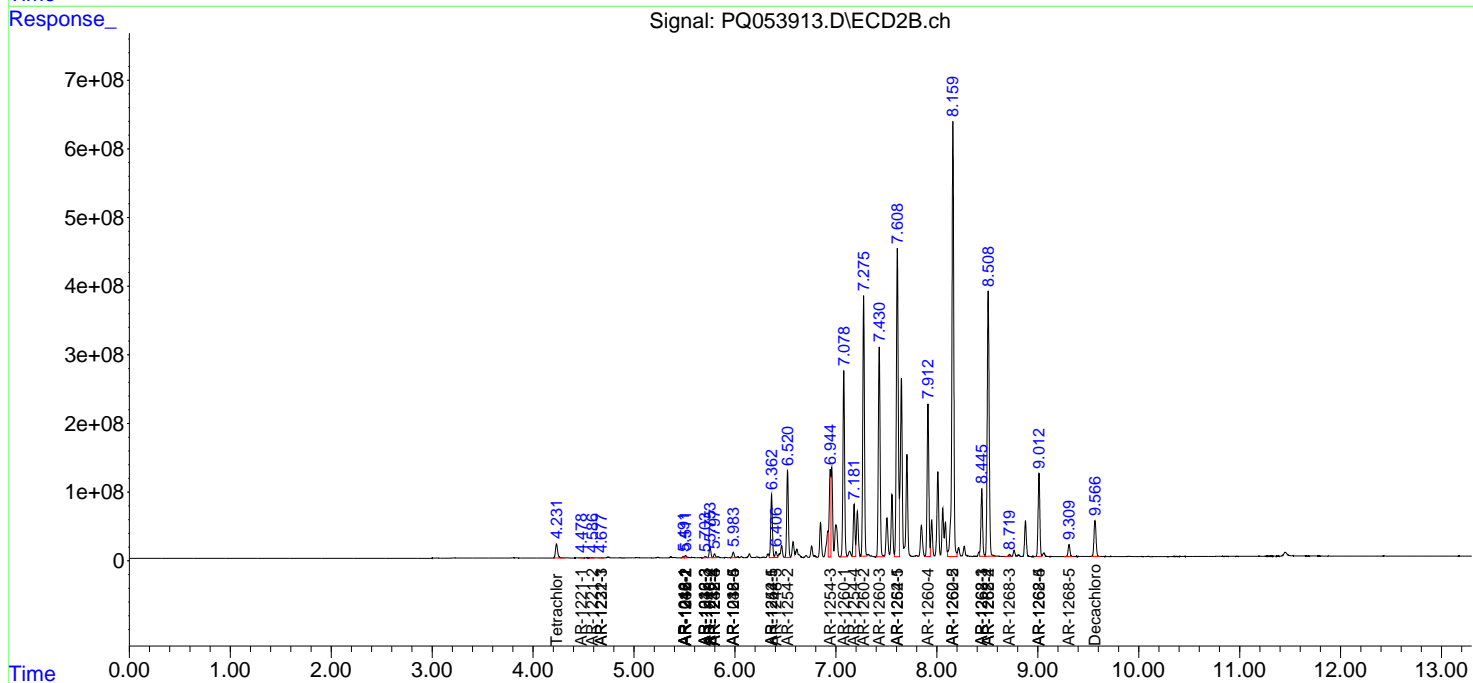
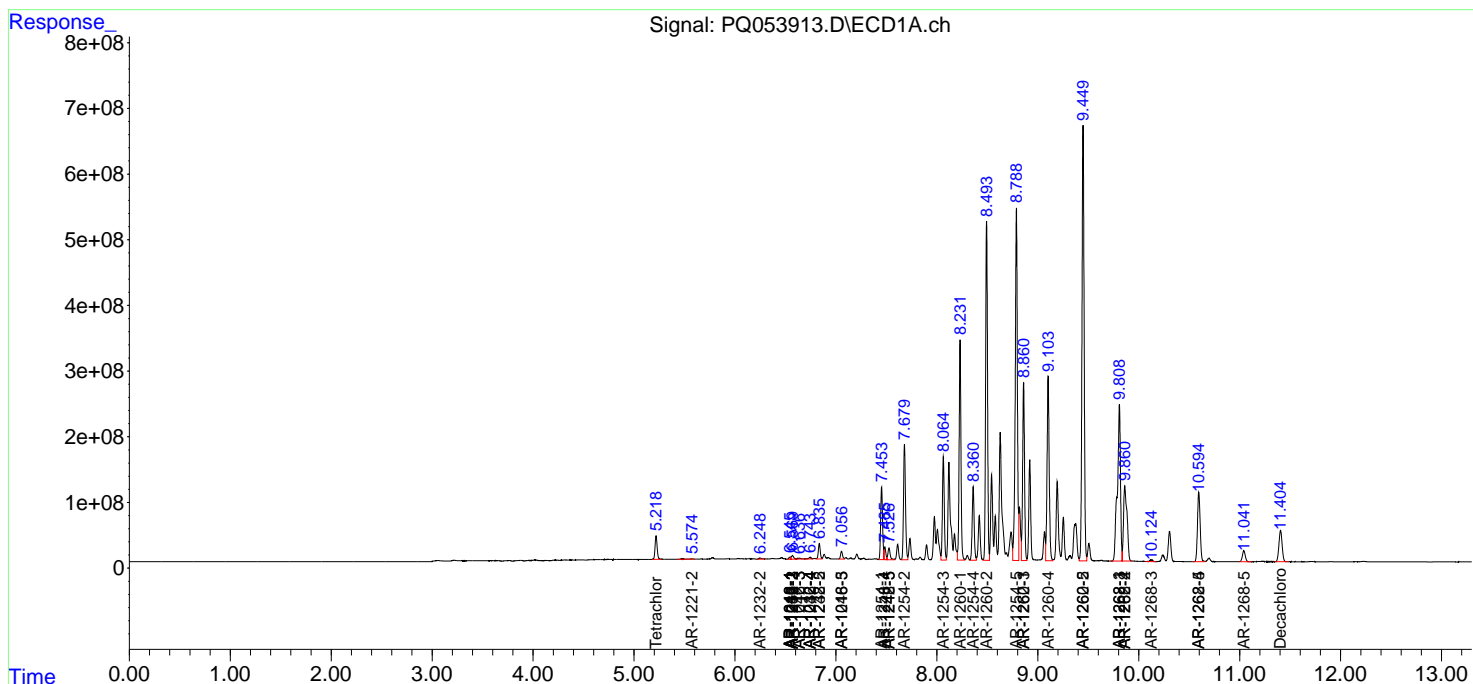
(f)=RT Delta > 1/2 Window (#)=Amounts differ by > 25% (m)=manual int.

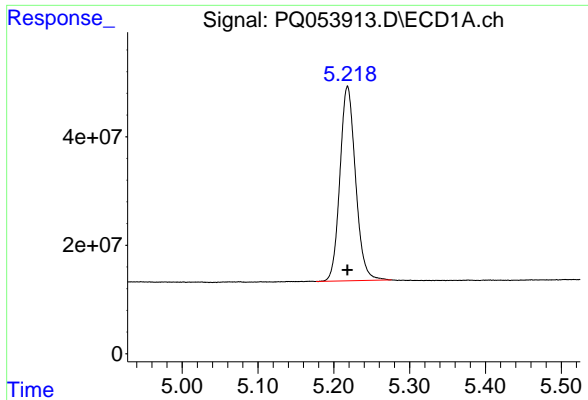
Data Path : Z:\pestpcbsrv\HPCHEM1\ECD_Q\Data\PQ061721\
 Data File : PQ053913.D
 Signal(s) : Signal #1: ECD1A.ch Signal #2: ECD2B.ch
 Acq On : 17 Jun 2021 11:26
 Operator : DD\AJ
 Sample : M2679-03
 Misc :
 ALS Vial : 8 Sample Multiplier: 1

Instrument :
 ECD_Q
 ClientSampled :

Integration File signal 1: autoint1.e
 Integration File signal 2: autoint2.e
 Quant Time: Jun 18 00:09:58 2021
 Quant Method : Z:\pestpcbsrv\HPCHEM1\ECD_Q\Method\PQ061621CLP.M
 Quant Title : GC EXTRACTABLES
 QLast Update : Thu Jun 17 06:07:32 2021
 Response via : Initial Calibration
 Integrator: ChemStation

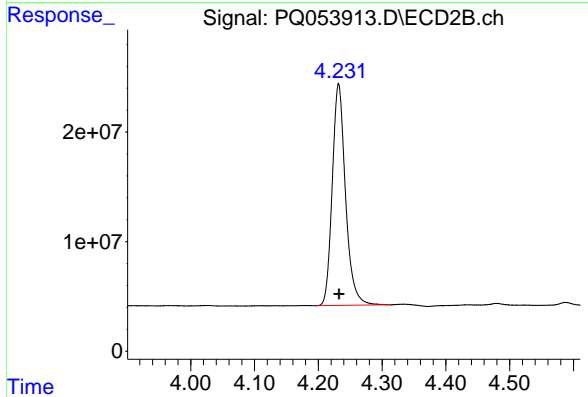
Volume Inj. : 1 µl
 Signal #1 Phase : ZB MR1 Signal #2 Phase: ZB MR2
 Signal #1 Info : 30Mx0.32mmx 0.5µm Signal #2 Info : 30M x 0.32mm x 0.25µm



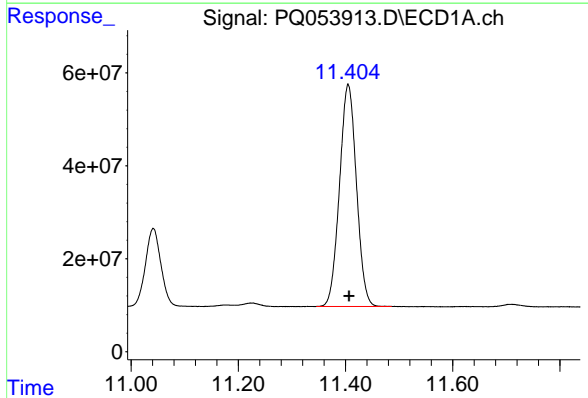


#1 Tetrachloro-m-xylene
R.T.: 5.218 min
Delta R.T.: 0.000 min
Response: 512819996
Conc: 19.04 ng/ml

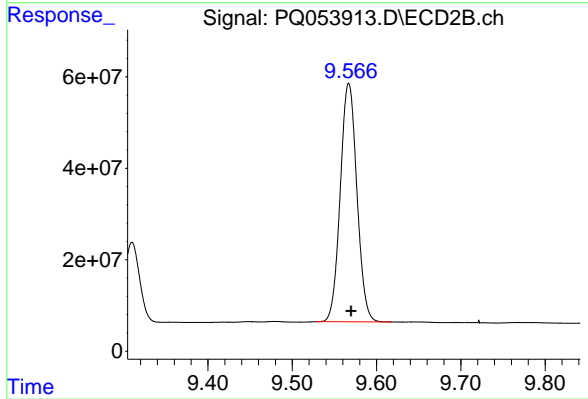
Instrument :
ECD_Q
ClientSampleId :



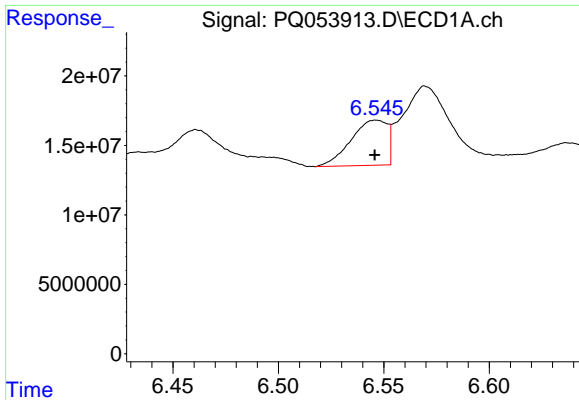
#1 Tetrachloro-m-xylene
R.T.: 4.232 min
Delta R.T.: 0.000 min
Response: 292291043
Conc: 19.59 ng/ml



#2 Decachlorobiphenyl
R.T.: 11.405 min
Delta R.T.: -0.001 min
Response: 1046375331
Conc: 51.11 ng/ml



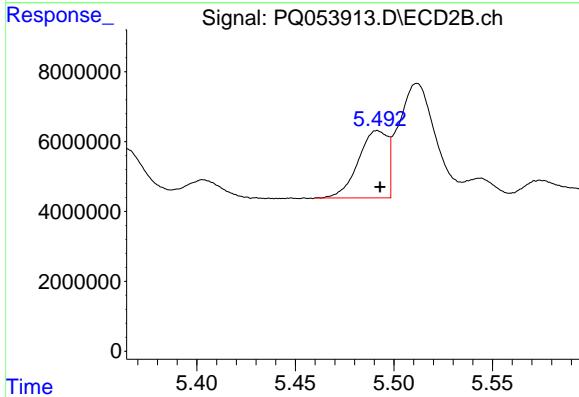
#2 Decachlorobiphenyl
R.T.: 9.567 min
Delta R.T.: -0.003 min
Response: 715695363
Conc: 62.35 ng/ml



#3 AR-1016-1

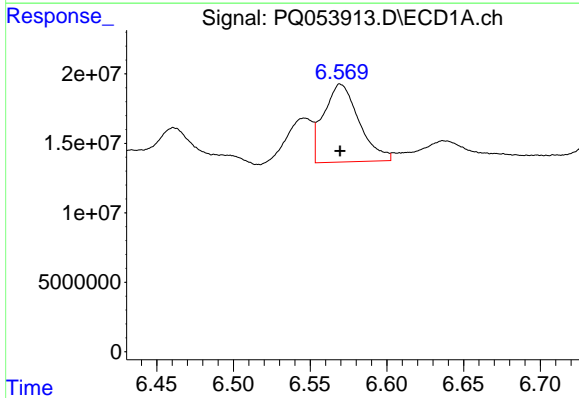
R.T.: 6.546 min
 Delta R.T.: 0.000 min
 Response: 38953058
 Conc: 43.00 ng/ml

Instrument :
 ECD_Q
 ClientSampleId :



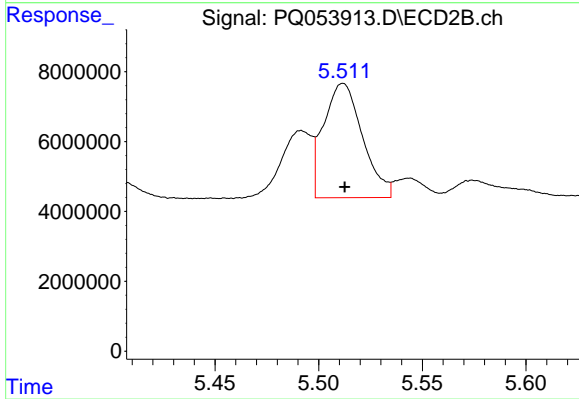
#3 AR-1016-1

R.T.: 5.492 min
 Delta R.T.: -0.001 min
 Response: 19878711
 Conc: 35.85 ng/ml



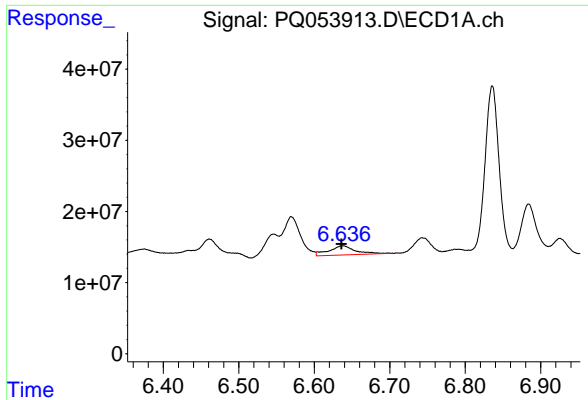
#4 AR-1016-2

R.T.: 6.570 min
 Delta R.T.: 0.000 min
 Response: 89769804
 Conc: 60.96 ng/ml



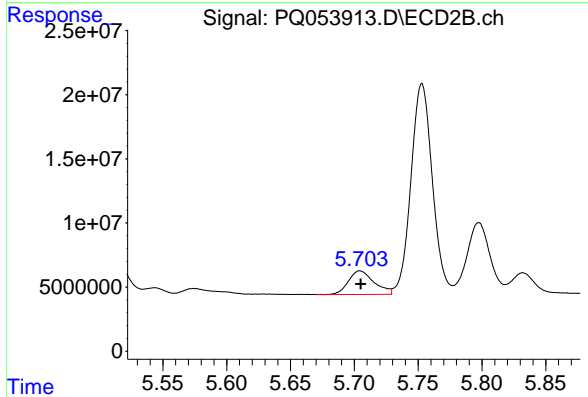
#4 AR-1016-2

R.T.: 5.512 min
 Delta R.T.: 0.000 min
 Response: 42618308
 Conc: 52.21 ng/ml

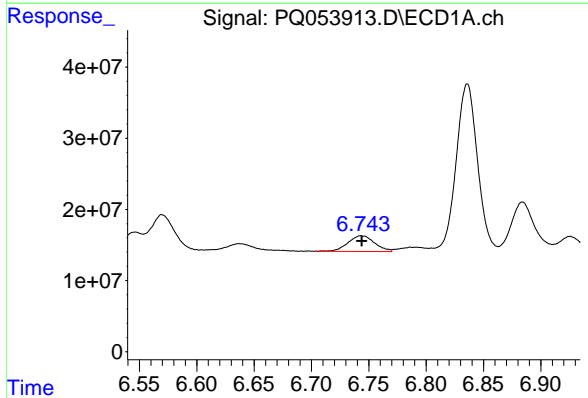


#5 AR-1016-3
 R.T.: 6.637 min
 Delta R.T.: 0.001 min
 Response: 31731529
 Conc: 35.42 ng/ml

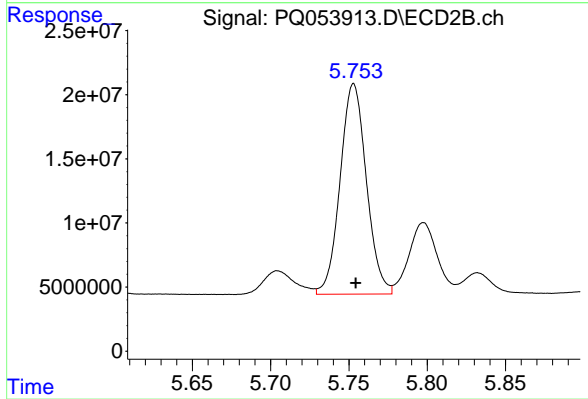
Instrument :
 ECD_Q
 ClientSampled :



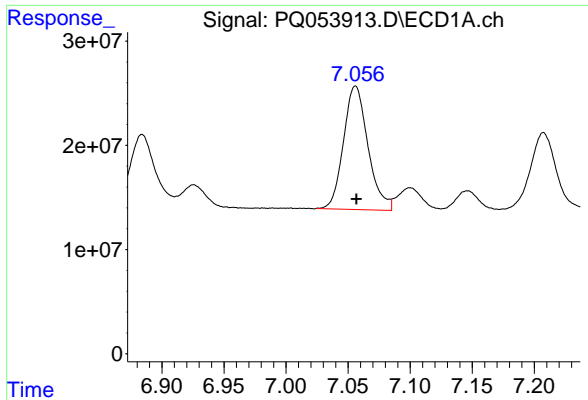
#5 AR-1016-3
 R.T.: 5.704 min
 Delta R.T.: 0.000 min
 Response: 25796011
 Conc: 60.69 ng/ml



#6 AR-1016-4
 R.T.: 6.743 min
 Delta R.T.: 0.000 min
 Response: 35852037
 Conc: 49.37 ng/ml

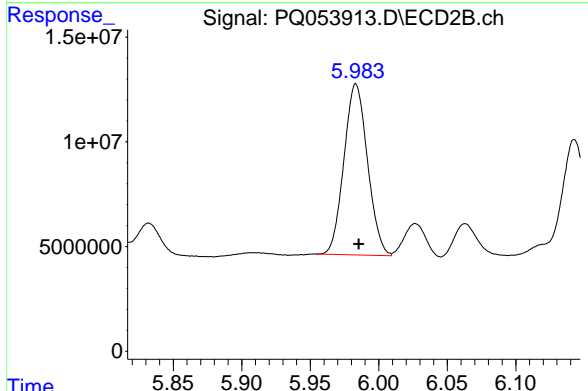


#6 AR-1016-4
 R.T.: 5.753 min
 Delta R.T.: -0.001 min
 Response: 191564054
 Conc: 556.72 ng/ml

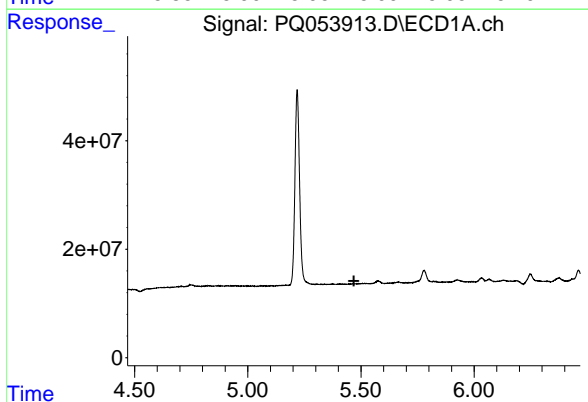


#7 AR-1016-5
 R.T.: 7.056 min
 Delta R.T.: 0.000 min
 Response: 163204010
 Conc: 242.90 ng/ml

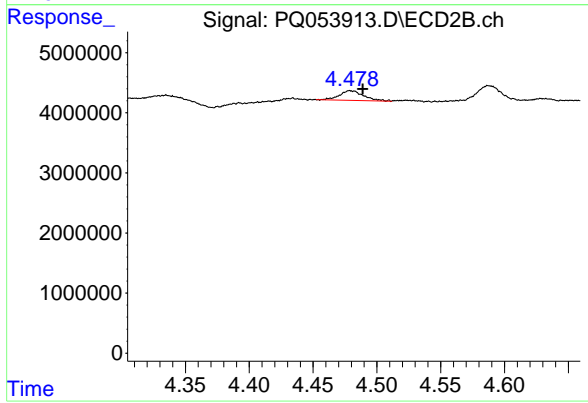
Instrument :
 ECD_Q
 ClientSampleId :



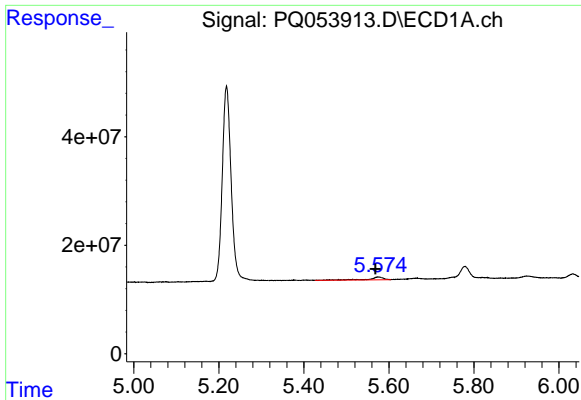
#7 AR-1016-5
 R.T.: 5.983 min
 Delta R.T.: -0.002 min
 Response: 97768024
 Conc: 225.25 ng/ml



#8 AR-1221-1
 R.T.: 0.000 min
 Exp R.T. : 5.469 min
 Response: 0
 Conc: N.D.



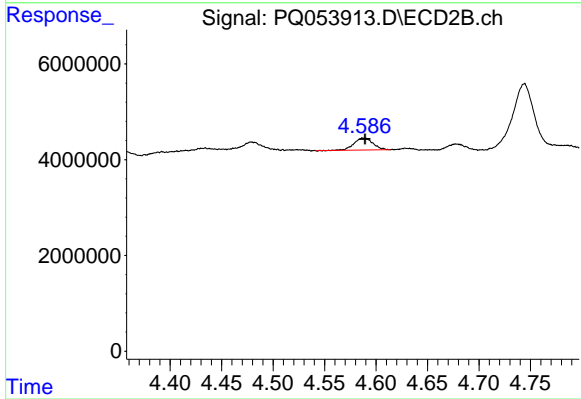
#8 AR-1221-1
 R.T.: 4.479 min
 Delta R.T.: -0.010 min
 Response: 2112658
 Conc: 12.81 ng/ml



#9 AR-1221-2

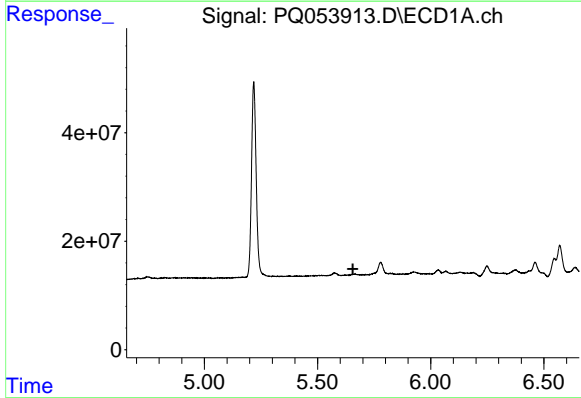
R.T.: 5.575 min
 Delta R.T.: 0.007 min
 Response: 11192191
 Conc: 56.94 ng/ml

Instrument :
 ECD_Q
 ClientSampleId :



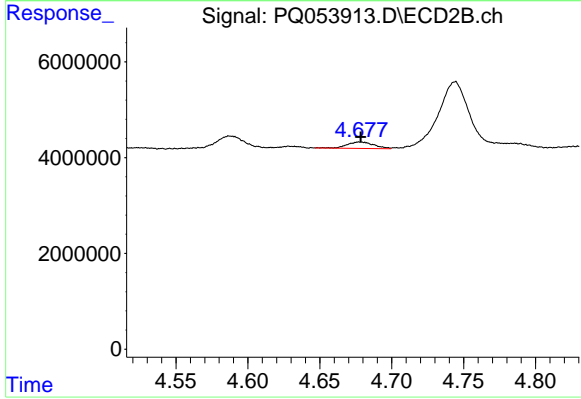
#9 AR-1221-2

R.T.: 4.588 min
 Delta R.T.: -0.002 min
 Response: 3236999
 Conc: 28.14 ng/ml



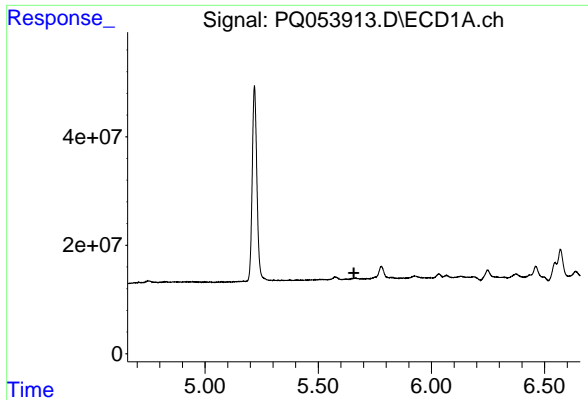
#10 AR-1221-3

R.T.: 0.000 min
 Exp R.T. : 5.656 min
 Response: 0
 Conc: N.D.



#10 AR-1221-3

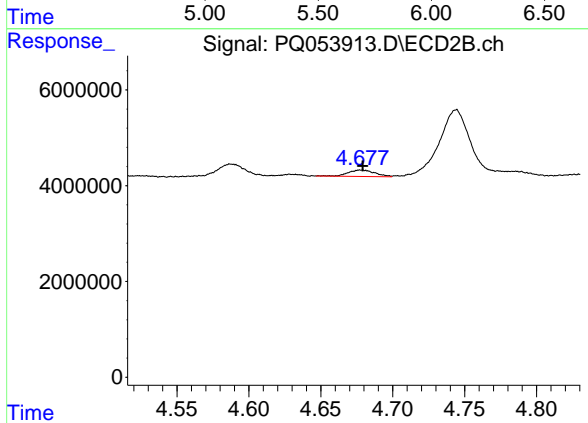
R.T.: 4.678 min
 Delta R.T.: 0.000 min
 Response: 1742141
 Conc: 4.32 ng/ml



#11 AR-1232-1

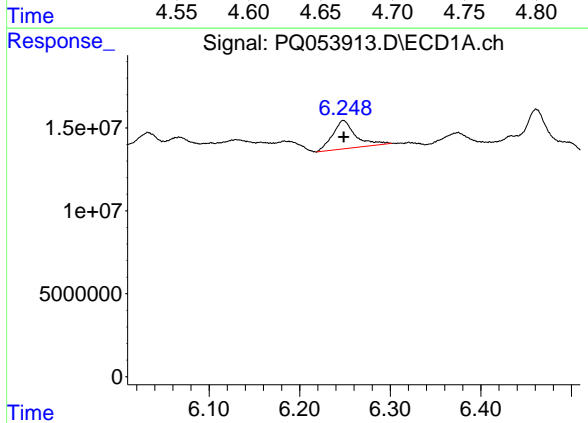
R.T.: 0.000 min
 Exp R.T.: 5.657 min
 Response: 0
 Conc: N.D.

Instrument :
 ECD_Q
 ClientSampleId :



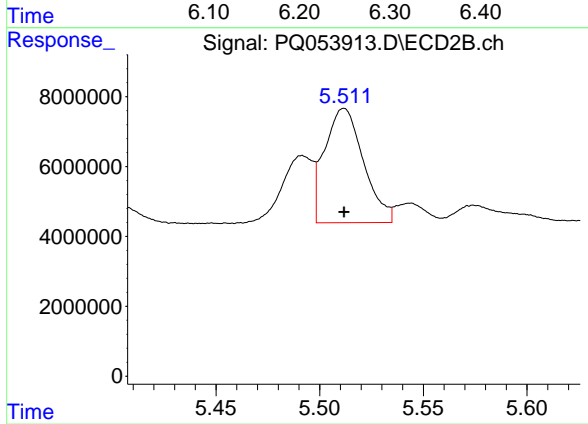
#11 AR-1232-1

R.T.: 4.678 min
 Delta R.T.: -0.001 min
 Response: 1742141
 Conc: 5.23 ng/ml



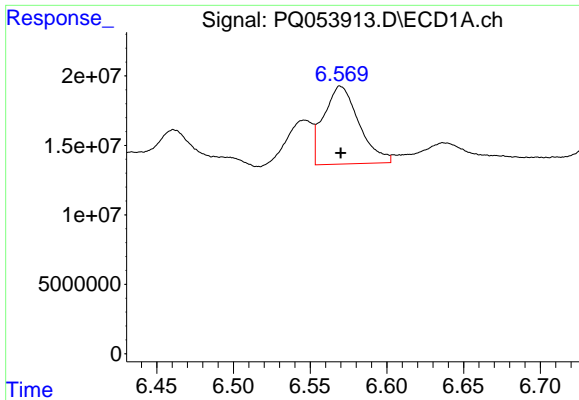
#12 AR-1232-2

R.T.: 6.248 min
 Delta R.T.: 0.000 min
 Response: 30134815
 Conc: 95.22 ng/ml



#12 AR-1232-2

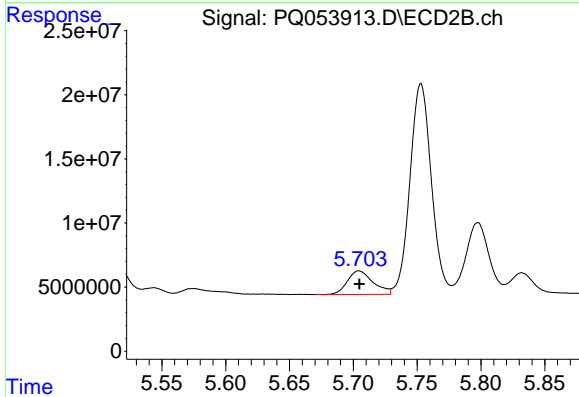
R.T.: 5.512 min
 Delta R.T.: 0.000 min
 Response: 42618308
 Conc: 115.44 ng/ml



#13 AR-1232-3

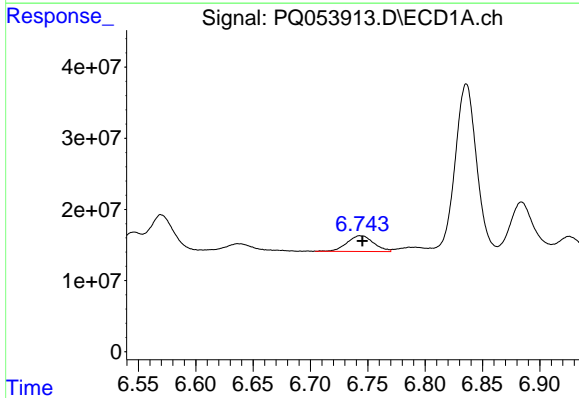
R.T.: 6.570 min
 Delta R.T.: 0.000 min
 Response: 89769804
 Conc: 135.20 ng/ml

Instrument :
 ECD_Q
 ClientSampled :



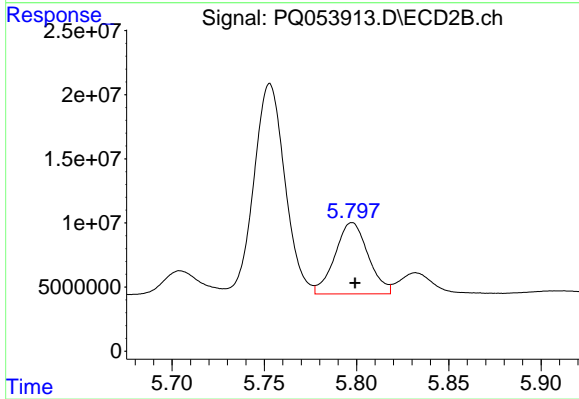
#13 AR-1232-3

R.T.: 5.704 min
 Delta R.T.: 0.000 min
 Response: 25796011
 Conc: 137.83 ng/ml



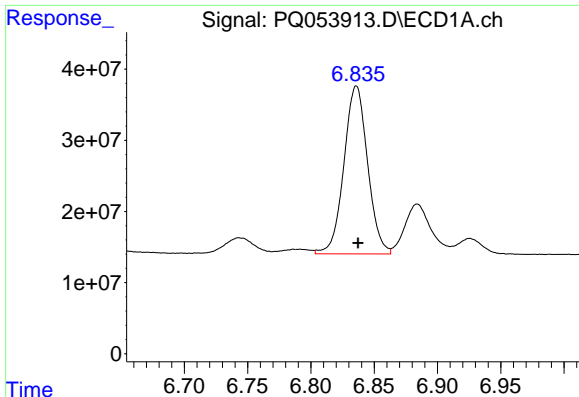
#14 AR-1232-4

R.T.: 6.743 min
 Delta R.T.: -0.002 min
 Response: 35852037
 Conc: 112.29 ng/ml



#14 AR-1232-4

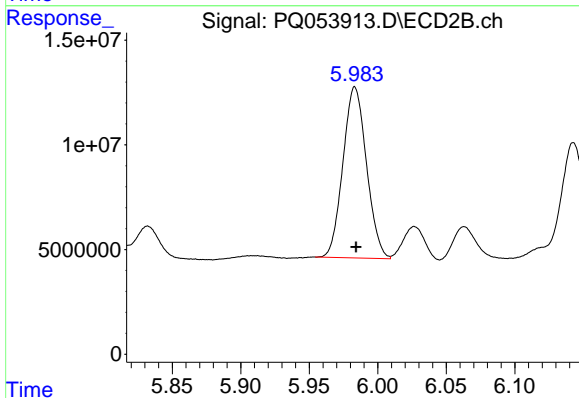
R.T.: 5.798 min
 Delta R.T.: -0.002 min
 Response: 69665381
 Conc: 427.58 ng/ml



#15 AR-1232-5

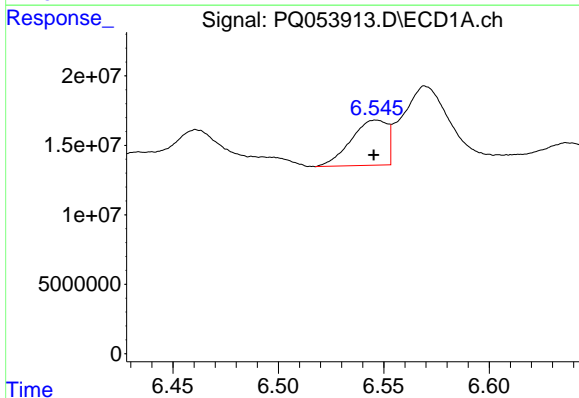
R.T.: 6.836 min
 Delta R.T.: -0.001 min
 Response: 307941657
 Conc: 1330.46 ng/ml

Instrument :
 ECD_Q
 ClientSampleId :



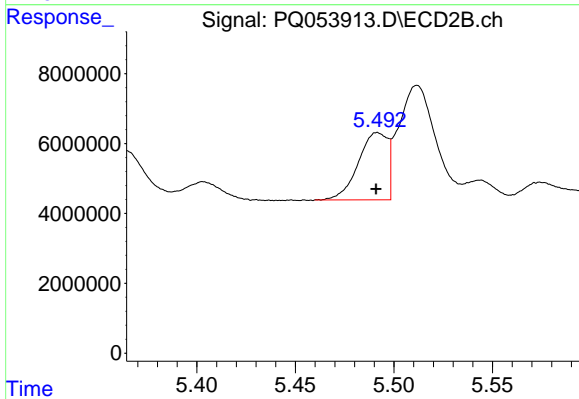
#15 AR-1232-5

R.T.: 5.983 min
 Delta R.T.: 0.000 min
 Response: 97768024
 Conc: 562.01 ng/ml



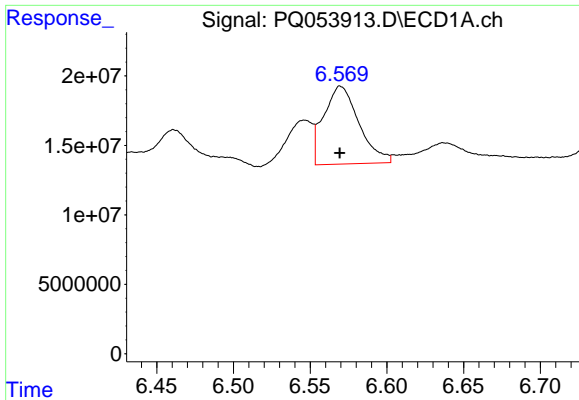
#16 AR-1242-1

R.T.: 6.546 min
 Delta R.T.: 0.001 min
 Response: 38953058
 Conc: 45.89 ng/ml



#16 AR-1242-1

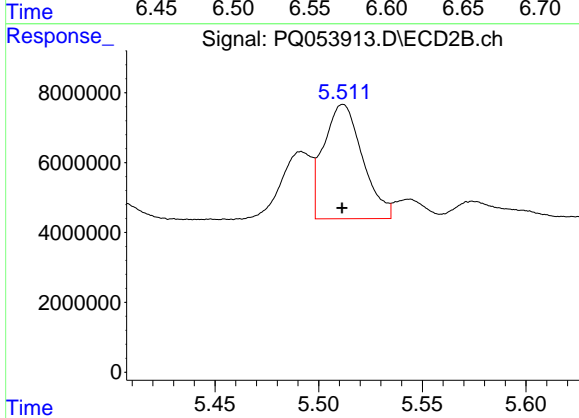
R.T.: 5.492 min
 Delta R.T.: 0.000 min
 Response: 19878711
 Conc: 36.76 ng/ml



#17 AR-1242-2

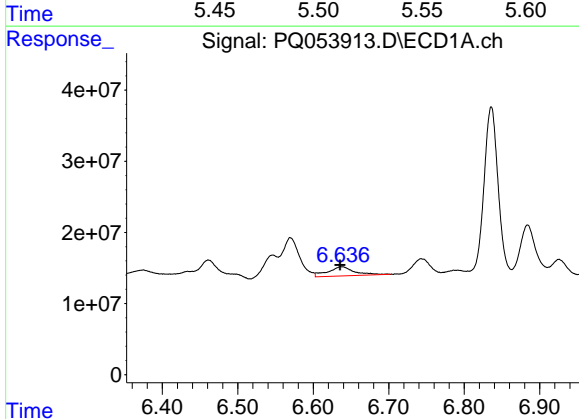
R.T.: 6.570 min
 Delta R.T.: 0.000 min
 Response: 89769804
 Conc: 62.60 ng/ml

Instrument :
 ECD_Q
 ClientSampleId :



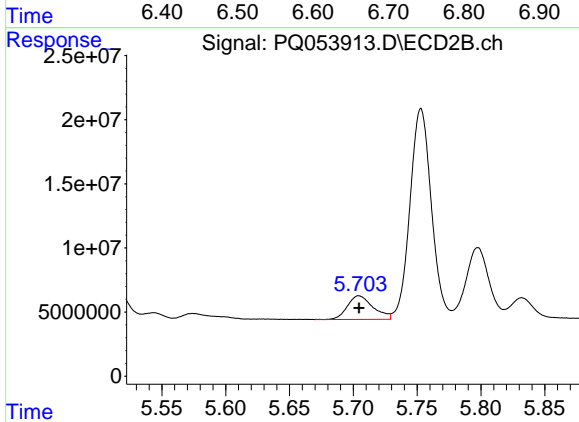
#17 AR-1242-2

R.T.: 5.512 min
 Delta R.T.: 0.000 min
 Response: 42618308
 Conc: 54.68 ng/ml



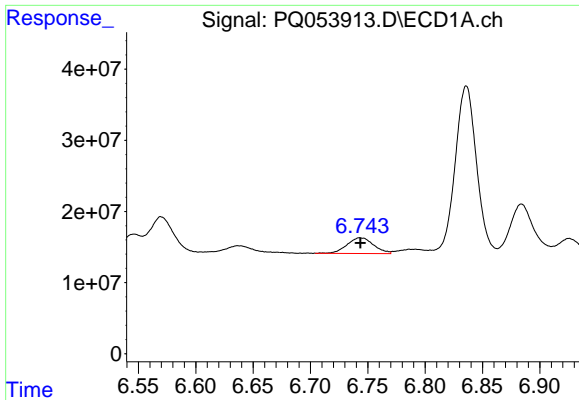
#18 AR-1242-3

R.T.: 6.637 min
 Delta R.T.: 0.001 min
 Response: 31731529
 Conc: 35.87 ng/ml



#18 AR-1242-3

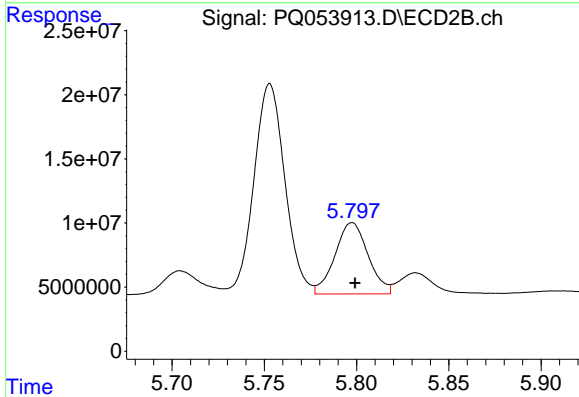
R.T.: 5.704 min
 Delta R.T.: 0.000 min
 Response: 25796011
 Conc: 62.25 ng/ml



#19 AR-1242-4

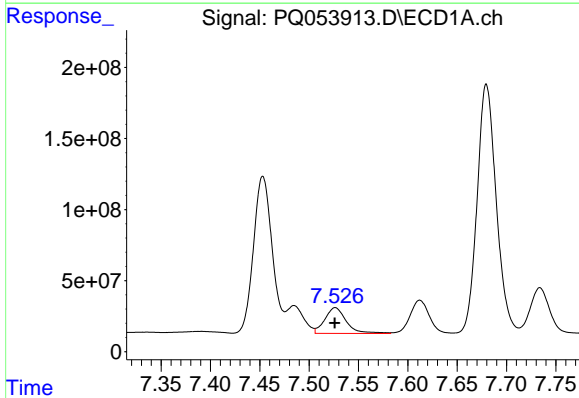
R.T.: 6.743 min
 Delta R.T.: 0.000 min
 Response: 35852037
 Conc: 49.89 ng/ml

Instrument :
 ECD_Q
 ClientSampled :



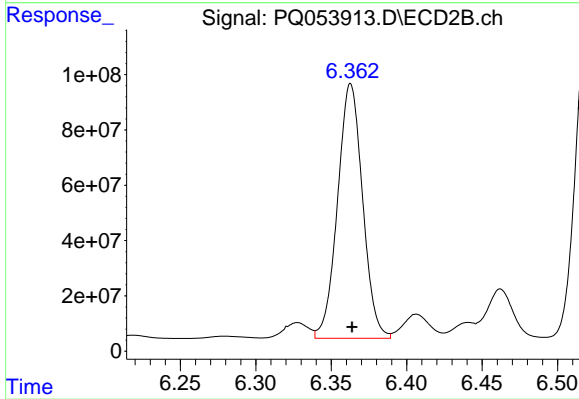
#19 AR-1242-4

R.T.: 5.798 min
 Delta R.T.: -0.002 min
 Response: 69665381
 Conc: 174.39 ng/ml



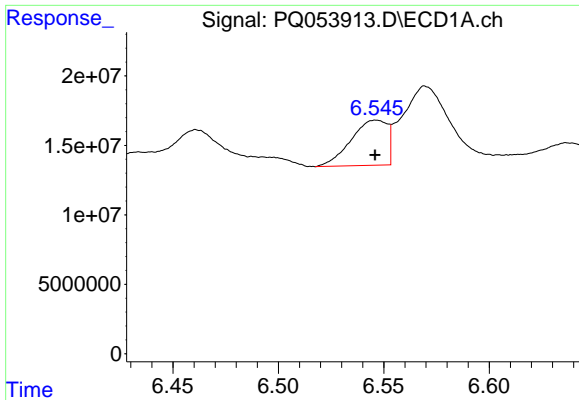
#20 AR-1242-5

R.T.: 7.527 min
 Delta R.T.: 0.000 min
 Response: 275278015
 Conc: 356.32 ng/ml



#20 AR-1242-5

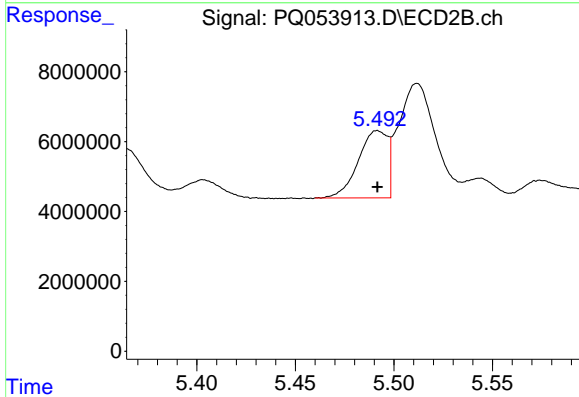
R.T.: 6.363 min
 Delta R.T.: 0.000 min
 Response: 1064459084
 Conc: 1923.64 ng/ml



#21 AR-1248-1

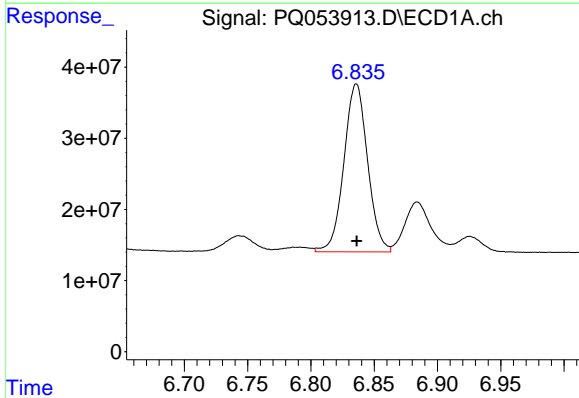
R.T.: 6.546 min
 Delta R.T.: 0.000 min
 Response: 38953058
 Conc: 66.78 ng/ml

Instrument :
 ECD_Q
 ClientSampled :



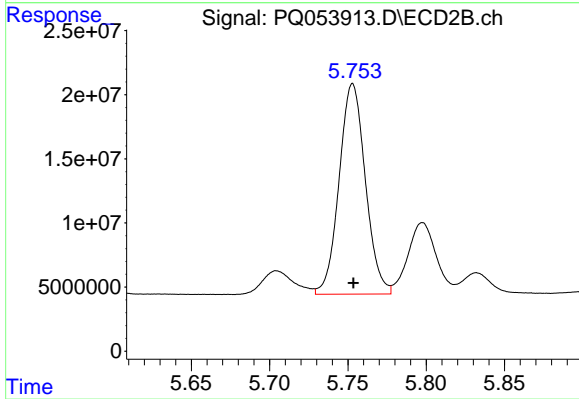
#21 AR-1248-1

R.T.: 5.492 min
 Delta R.T.: 0.000 min
 Response: 19878711
 Conc: 54.92 ng/ml



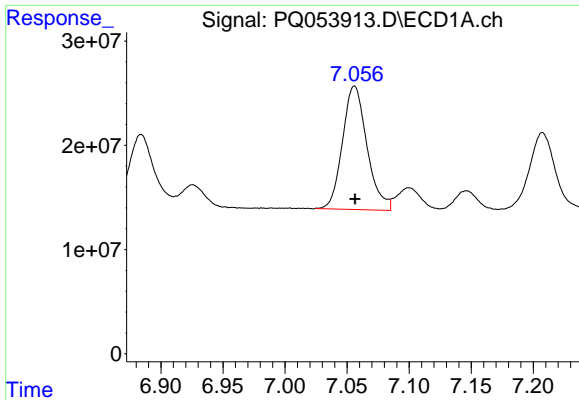
#22 AR-1248-2

R.T.: 6.836 min
 Delta R.T.: 0.000 min
 Response: 307941657
 Conc: 346.45 ng/ml



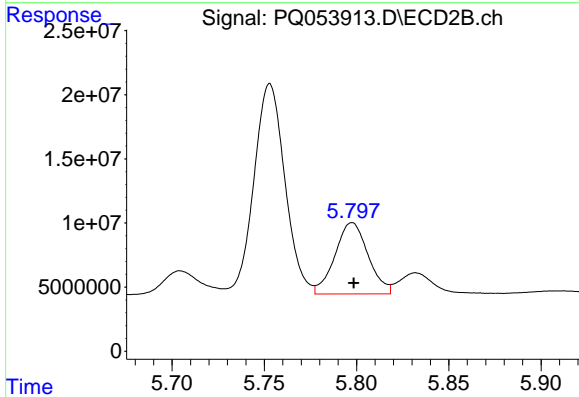
#22 AR-1248-2

R.T.: 5.753 min
 Delta R.T.: 0.000 min
 Response: 191564054
 Conc: 369.50 ng/ml

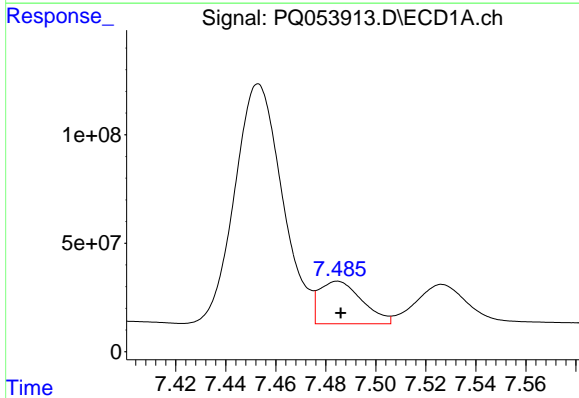


#23 AR-1248-3
 R.T.: 7.056 min
 Delta R.T.: 0.000 min
 Response: 163204010
 Conc: 164.55 ng/ml

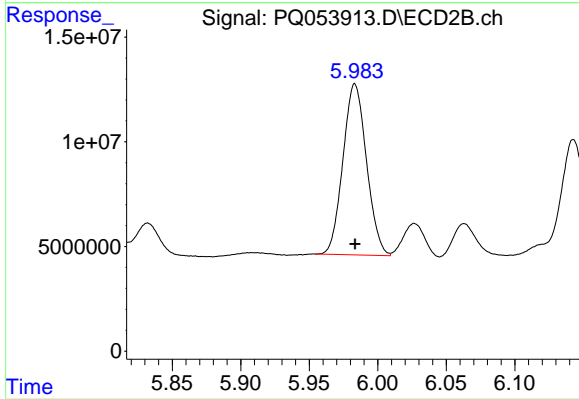
Instrument :
 ECD_Q
 ClientSampled :



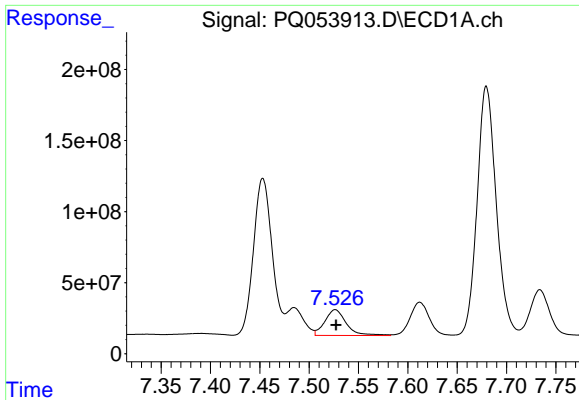
#23 AR-1248-3
 R.T.: 5.798 min
 Delta R.T.: 0.000 min
 Response: 69665381
 Conc: 130.39 ng/ml



#24 AR-1248-4
 R.T.: 7.485 min
 Delta R.T.: -0.001 min
 Response: 232995071
 Conc: 196.49 ng/ml

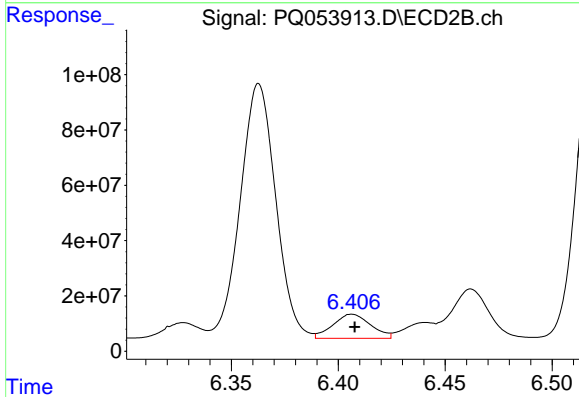


#24 AR-1248-4
 R.T.: 5.983 min
 Delta R.T.: 0.000 min
 Response: 97768024
 Conc: 153.40 ng/ml

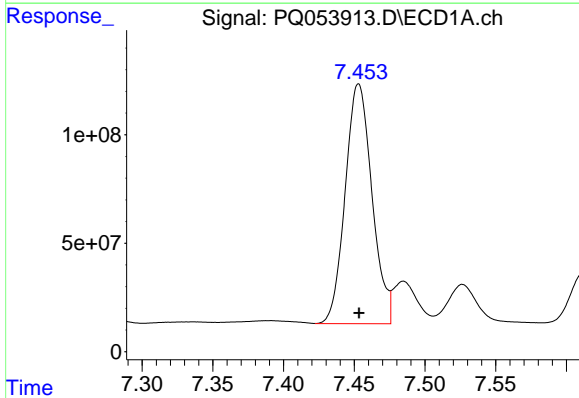


#25 AR-1248-5
 R.T.: 7.527 min
 Delta R.T.: 0.000 min
 Response: 275278015
 Conc: 230.78 ng/ml

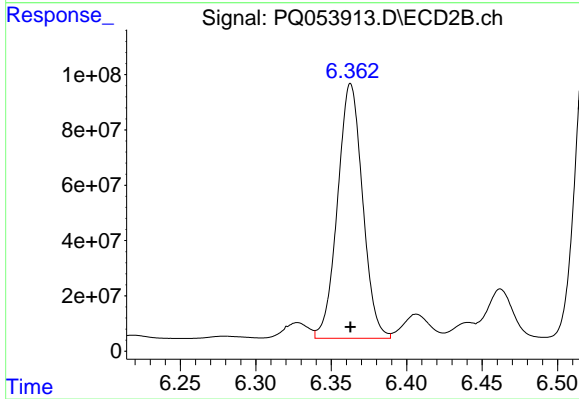
Instrument :
 ECD_Q
 ClientSampleId :



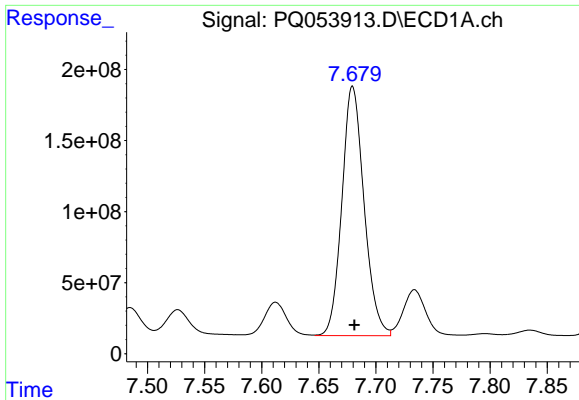
#25 AR-1248-5
 R.T.: 6.406 min
 Delta R.T.: -0.001 min
 Response: 106747904
 Conc: 155.89 ng/ml



#26 AR-1254-1
 R.T.: 7.453 min
 Delta R.T.: 0.000 min
 Response: 1456114231
 Conc: 917.51 ng/ml



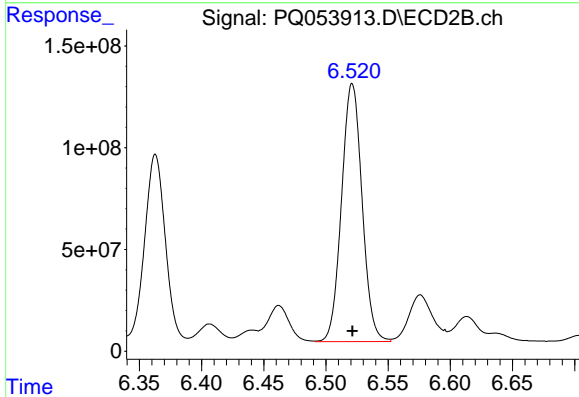
#26 AR-1254-1
 R.T.: 6.363 min
 Delta R.T.: 0.000 min
 Response: 1064459084
 Conc: 730.67 ng/ml



#27 AR-1254-2

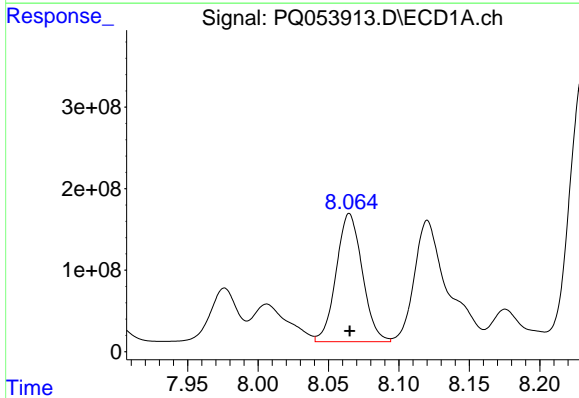
R.T.: 7.680 min
 Delta R.T.: -0.002 min
 Response: 2374477465
 Conc: 950.72 ng/ml

Instrument :
 ECD_Q
 ClientSampled :



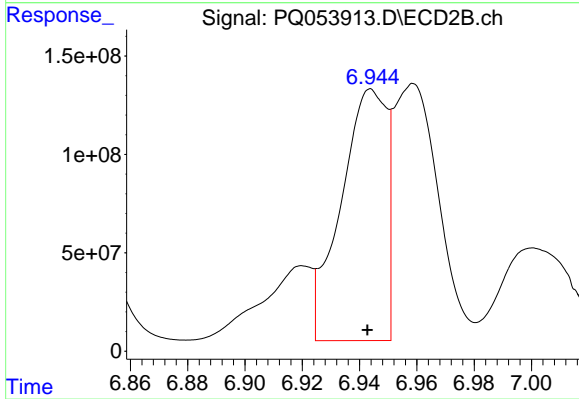
#27 AR-1254-2

R.T.: 6.521 min
 Delta R.T.: 0.000 min
 Response: 1458355922
 Conc: 1125.76 ng/ml



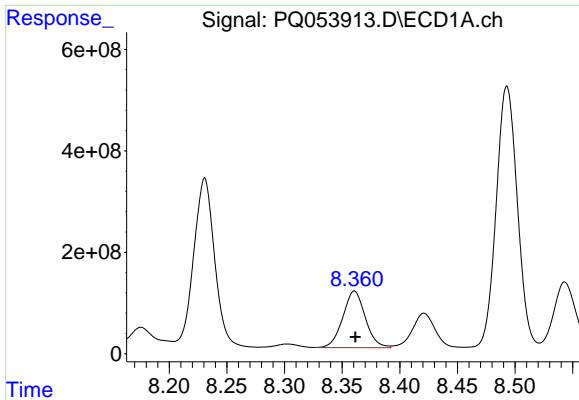
#28 AR-1254-3

R.T.: 8.065 min
 Delta R.T.: 0.000 min
 Response: 2028885396
 Conc: 787.17 ng/ml



#28 AR-1254-3

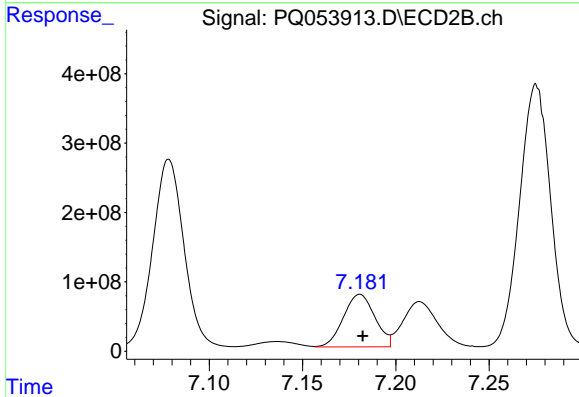
R.T.: 6.944 min
 Delta R.T.: 0.001 min
 Response: 1411255430
 Conc: 674.77 ng/ml



#29 AR-1254-4

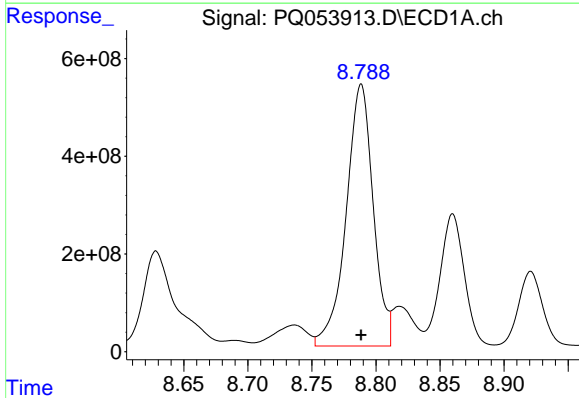
R.T.: 8.361 min
 Delta R.T.: 0.000 min
 Response: 1515520612
 Conc: 758.89 ng/ml

Instrument :
 ECD_Q
 ClientSampled :



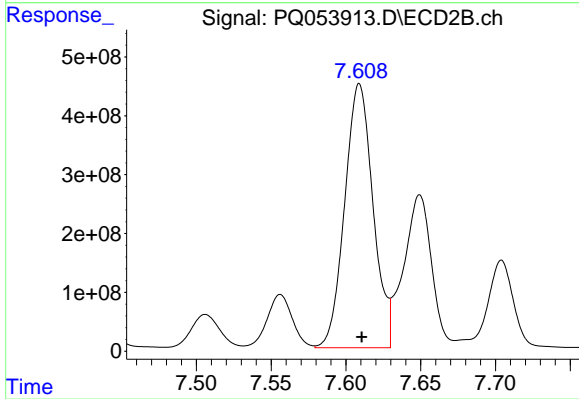
#29 AR-1254-4

R.T.: 7.181 min
 Delta R.T.: -0.001 min
 Response: 888559650
 Conc: 641.21 ng/ml



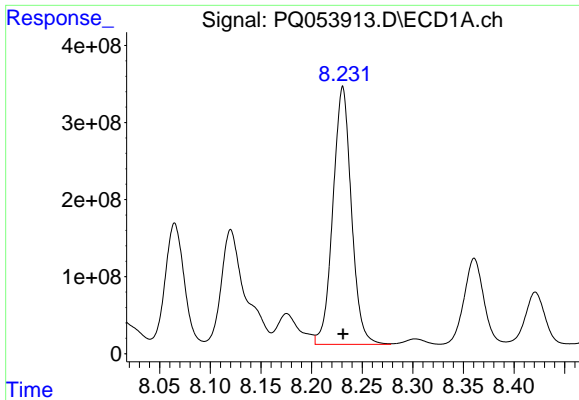
#30 AR-1254-5

R.T.: 8.788 min
 Delta R.T.: 0.000 min
 Response: 7878439030
 Conc: 3965.88 ng/ml



#30 AR-1254-5

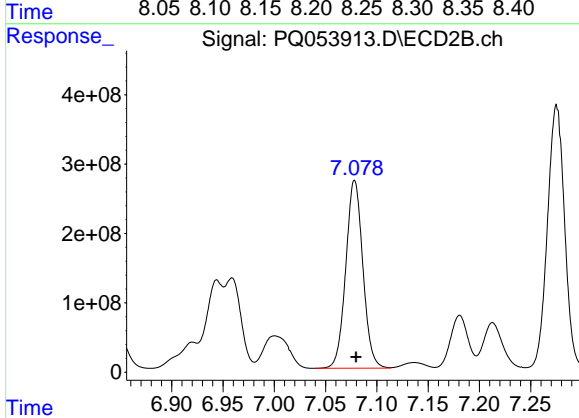
R.T.: 7.609 min
 Delta R.T.: -0.002 min
 Response: 5920084753
 Conc: 3049.96 ng/ml



#31 AR-1260-1

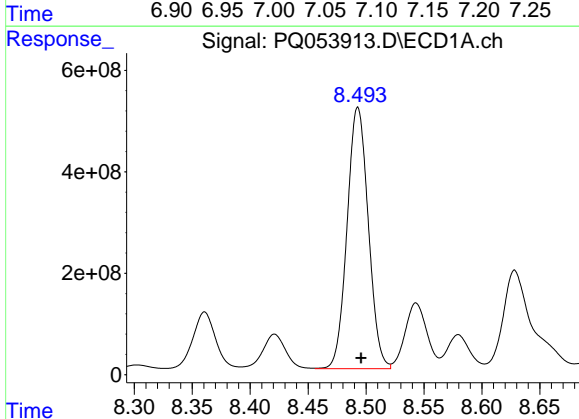
R.T.: 8.231 min
 Delta R.T.: 0.000 min
 Response: 4251502954
 Conc: 3768.25 ng/ml

Instrument :
 ECD_Q
 ClientSampleId :



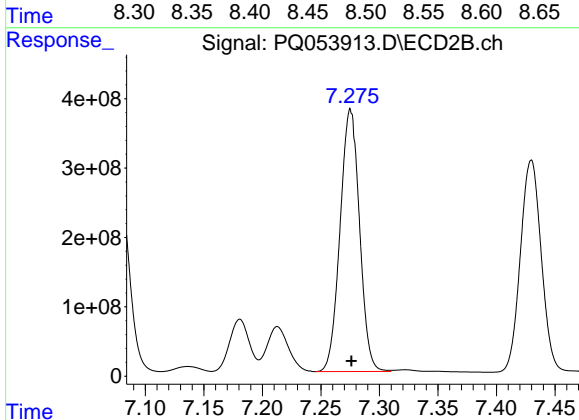
#31 AR-1260-1

R.T.: 7.078 min
 Delta R.T.: -0.001 min
 Response: 3143417889
 Conc: 3660.87 ng/ml



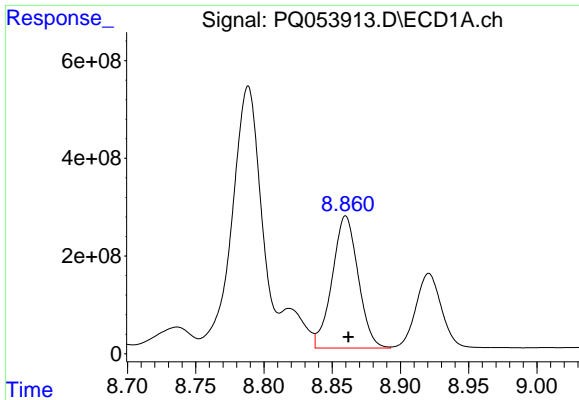
#32 AR-1260-2

R.T.: 8.493 min
 Delta R.T.: -0.003 min
 Response: 6572484788
 Conc: 4689.22 ng/ml



#32 AR-1260-2

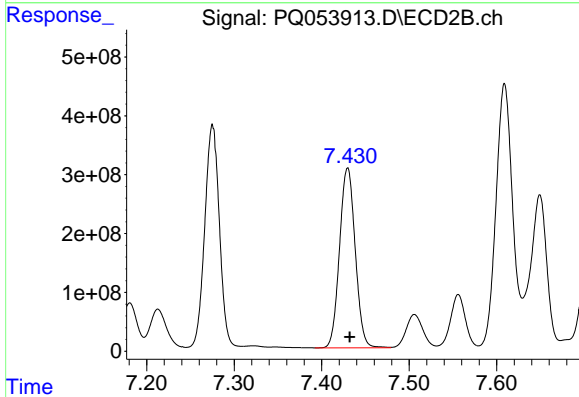
R.T.: 7.275 min
 Delta R.T.: 0.000 min
 Response: 4375050510
 Conc: 3571.15 ng/ml



#33 AR-1260-3

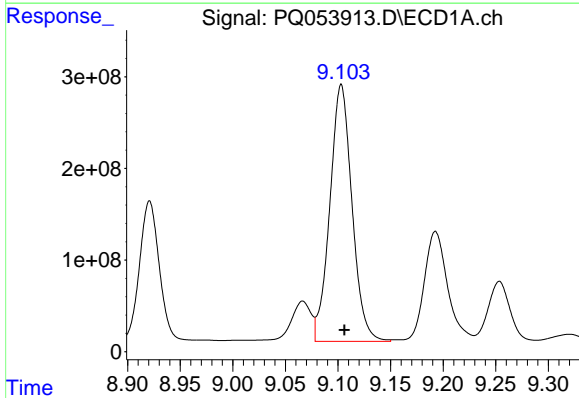
R.T.: 8.860 min
 Delta R.T.: -0.002 min
 Response: 3586379472
 Conc: 3229.68 ng/ml

Instrument :
 ECD_Q
 ClientSampled :



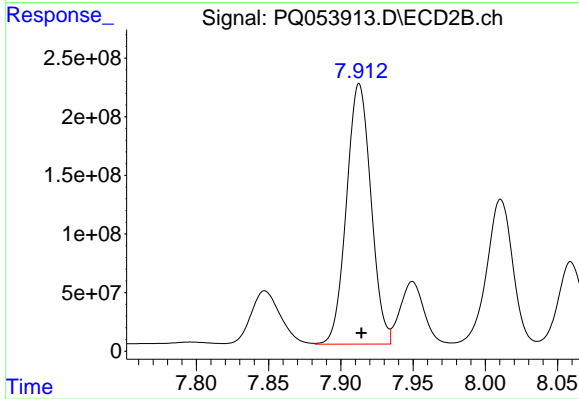
#33 AR-1260-3

R.T.: 7.430 min
 Delta R.T.: -0.002 min
 Response: 3809673066
 Conc: 3749.13 ng/ml



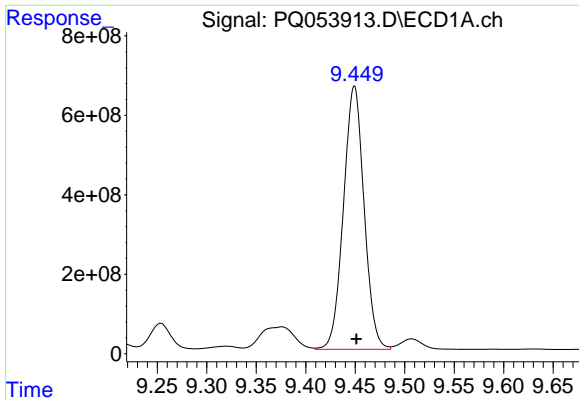
#34 AR-1260-4

R.T.: 9.103 min
 Delta R.T.: -0.003 min
 Response: 4111806558
 Conc: 3949.47 ng/ml



#34 AR-1260-4

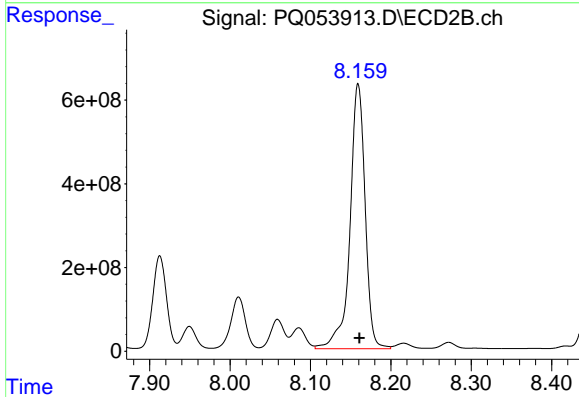
R.T.: 7.913 min
 Delta R.T.: -0.001 min
 Response: 2619382983
 Conc: 2996.66 ng/ml



#35 AR-1260-5

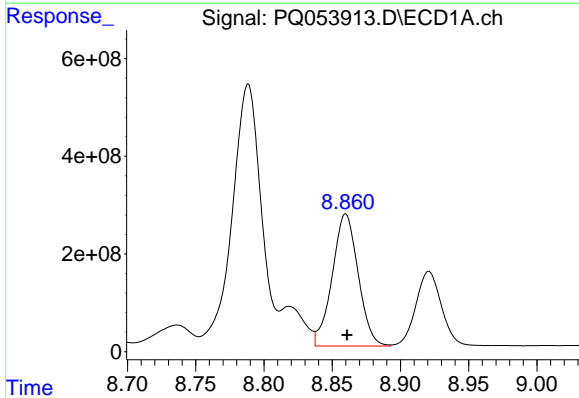
R.T.: 9.449 min
 Delta R.T.: -0.002 min
 Response: 9621388495
 Conc: 4197.44 ng/ml

Instrument :
 ECD_Q
 ClientSampleId :



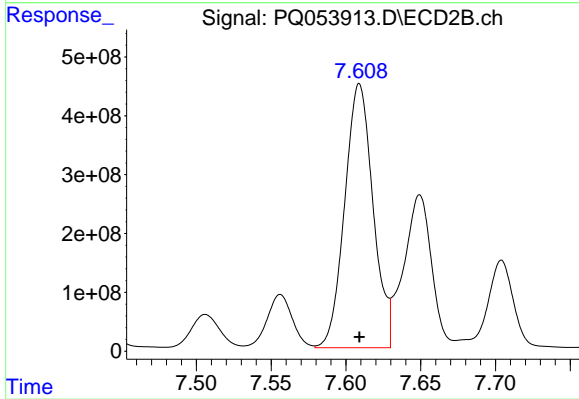
#35 AR-1260-5

R.T.: 8.159 min
 Delta R.T.: -0.001 min
 Response: 8268256880
 Conc: 3553.12 ng/ml



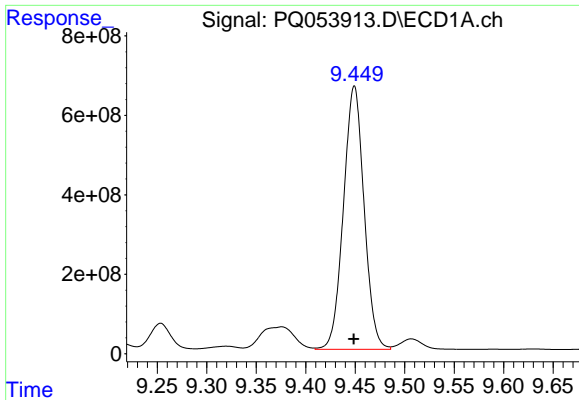
#36 AR-1262-1

R.T.: 8.860 min
 Delta R.T.: 0.000 min
 Response: 3586379472
 Conc: 2052.57 ng/ml



#36 AR-1262-1

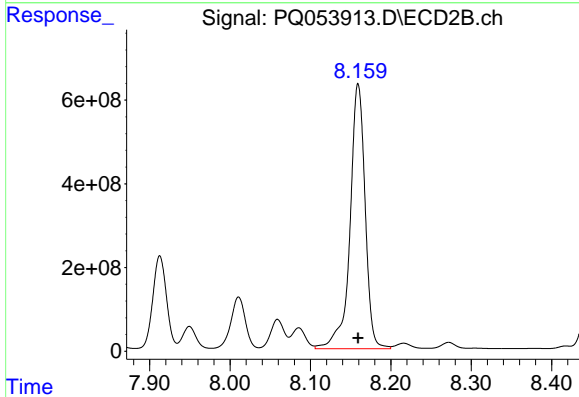
R.T.: 7.609 min
 Delta R.T.: 0.000 min
 Response: 5920084753
 Conc: 9475.41 ng/ml



#37 AR-1262-2

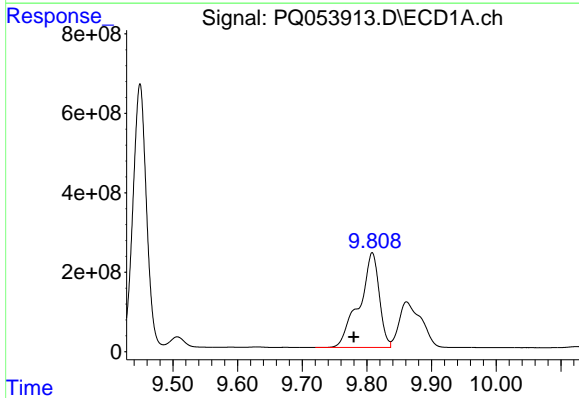
R.T.: 9.449 min
 Delta R.T.: 0.000 min
 Response: 9621388495
 Conc: 3423.40 ng/ml

Instrument :
 ECD_Q
 ClientSampled :



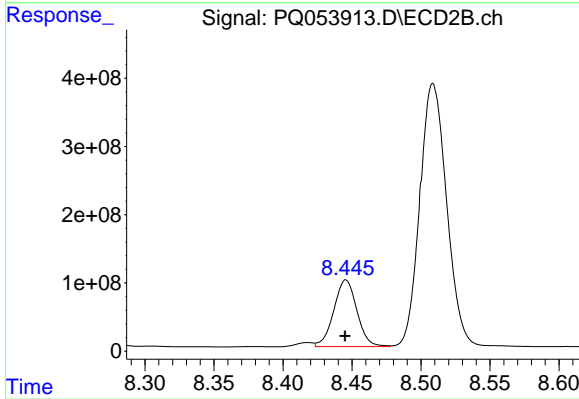
#37 AR-1262-2

R.T.: 8.159 min
 Delta R.T.: 0.000 min
 Response: 8268256880
 Conc: 3256.40 ng/ml



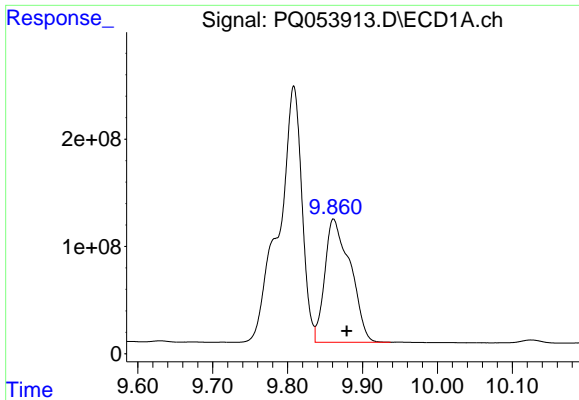
#38 AR-1262-3

R.T.: 9.808 min
 Delta R.T.: 0.029 min
 Response: 5111497179
 Conc: 2829.26 ng/ml



#38 AR-1262-3

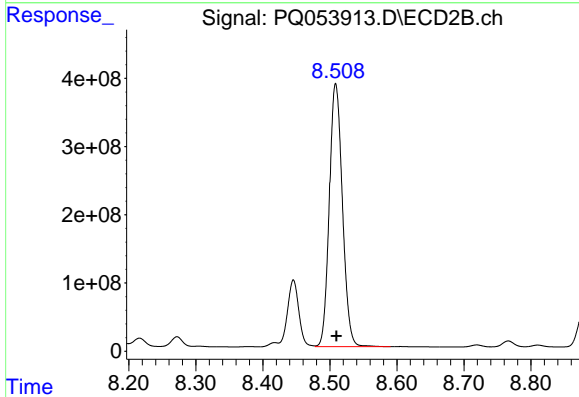
R.T.: 8.446 min
 Delta R.T.: 0.000 min
 Response: 1143485708
 Conc: 1085.57 ng/ml



#39 AR-1262-4

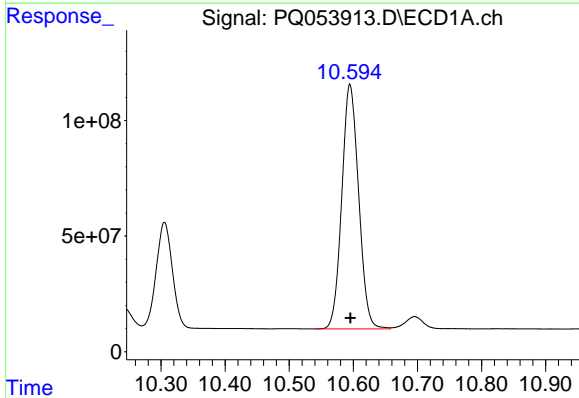
R.T.: 9.861 min
 Delta R.T.: -0.018 min
 Response: 2721654226
 Conc: 1931.07 ng/ml

Instrument :
 ECD_Q
 ClientSampleId :



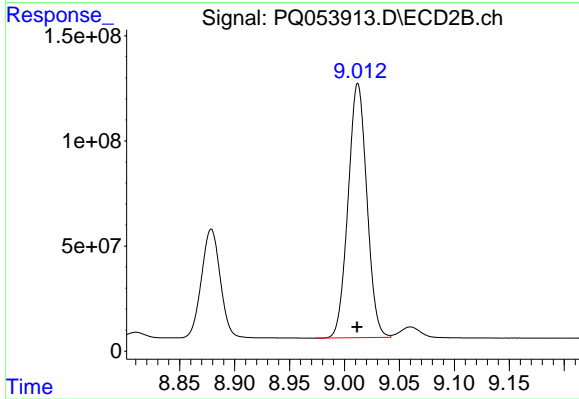
#39 AR-1262-4

R.T.: 8.509 min
 Delta R.T.: -0.001 min
 Response: 5233258540
 Conc: 3036.11 ng/ml



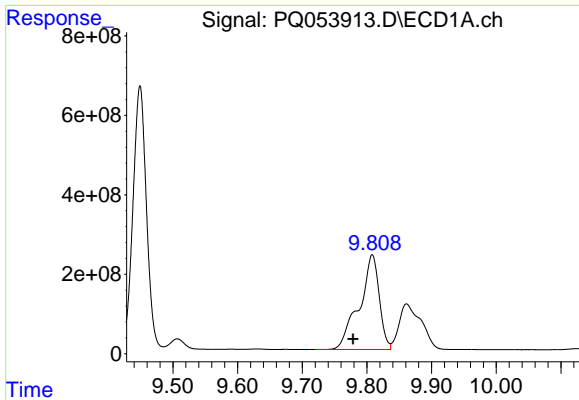
#40 AR-1262-5

R.T.: 10.595 min
 Delta R.T.: 0.000 min
 Response: 1930227814
 Conc: 1974.35 ng/ml



#40 AR-1262-5

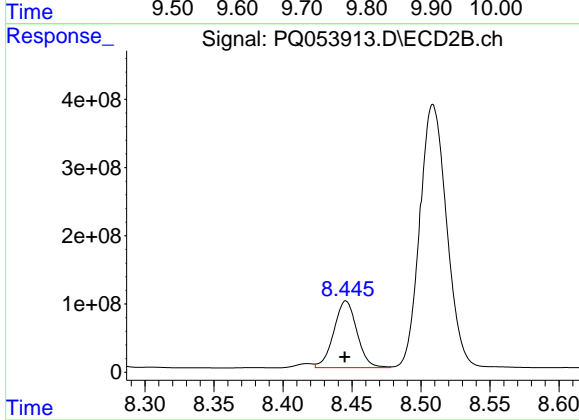
R.T.: 9.012 min
 Delta R.T.: 0.000 min
 Response: 1438834756
 Conc: 1942.87 ng/ml



#41 AR-1268-1

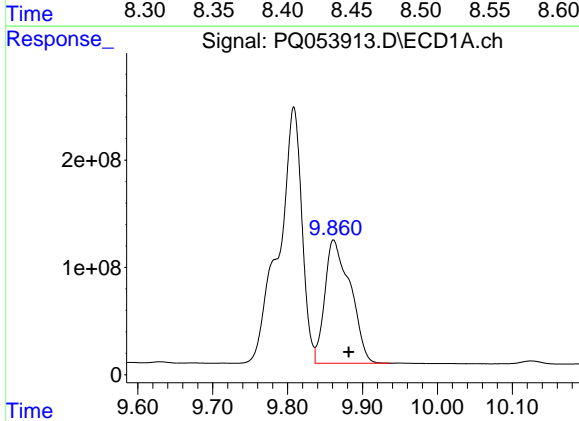
R.T.: 9.808 min
 Delta R.T.: 0.030 min
 Response: 5111497179
 Conc: 1401.54 ng/ml

Instrument :
 ECD_Q
 ClientSampled :



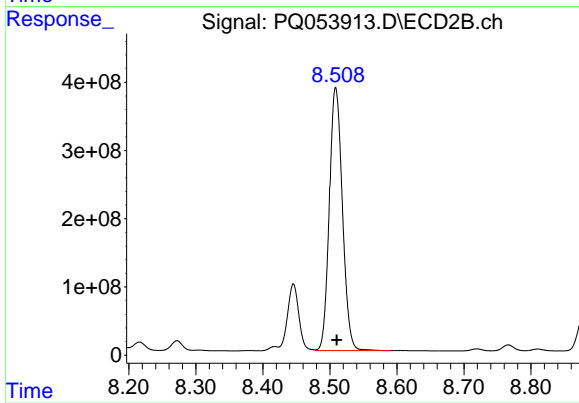
#41 AR-1268-1

R.T.: 8.446 min
 Delta R.T.: 0.000 min
 Response: 1143485708
 Conc: 356.21 ng/ml



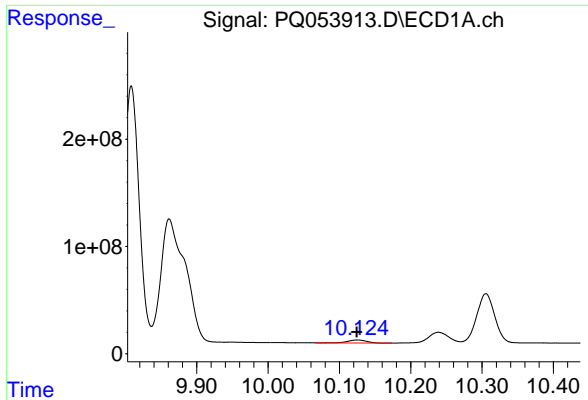
#42 AR-1268-2

R.T.: 9.861 min
 Delta R.T.: -0.020 min
 Response: 2721654226
 Conc: 844.95 ng/ml



#42 AR-1268-2

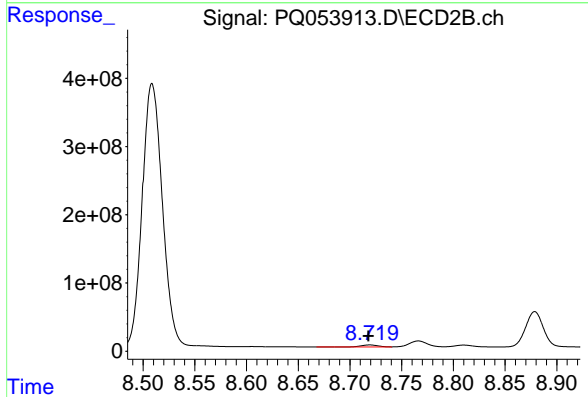
R.T.: 8.509 min
 Delta R.T.: -0.002 min
 Response: 5233258540
 Conc: 1951.70 ng/ml



#43 AR-1268-3

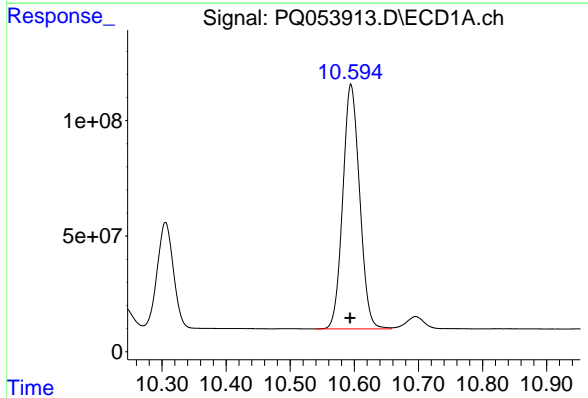
R.T.: 10.125 min
 Delta R.T.: 0.000 min
 Response: 50785661
 Conc: 17.40 ng/ml

Instrument :
 ECD_Q
 ClientSampleId :



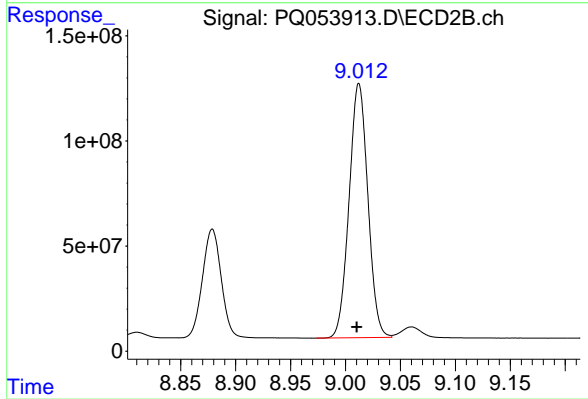
#43 AR-1268-3

R.T.: 8.719 min
 Delta R.T.: 0.001 min
 Response: 32376698
 Conc: 13.93 ng/ml



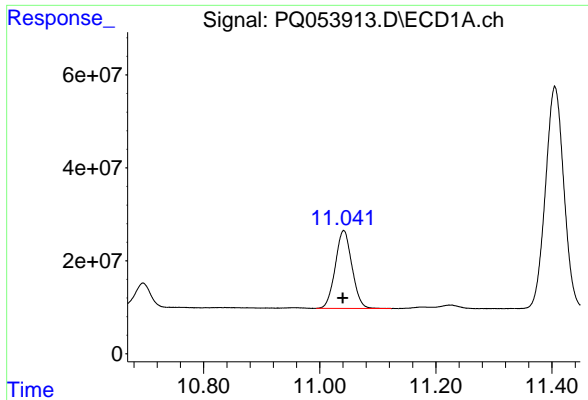
#44 AR-1268-4

R.T.: 10.595 min
 Delta R.T.: 0.001 min
 Response: 1930227814
 Conc: 1716.05 ng/ml



#44 AR-1268-4

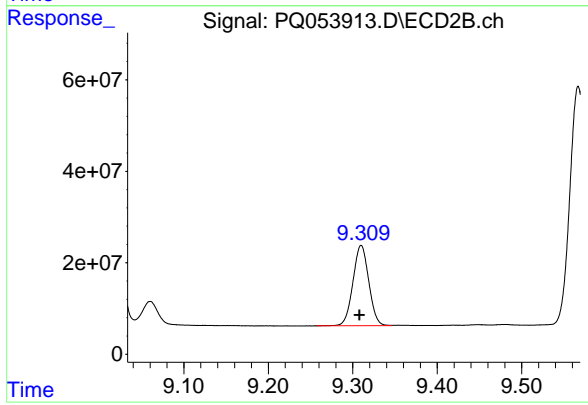
R.T.: 9.012 min
 Delta R.T.: 0.002 min
 Response: 1438834756
 Conc: 1681.60 ng/ml



#45 AR-1268-5

R.T.: 11.041 min
Delta R.T.: 0.002 min
Response: 334530694
Conc: 38.80 ng/ml

Instrument :
ECD_Q
ClientSampleId :



#45 AR-1268-5

R.T.: 9.310 min
Delta R.T.: 0.002 min
Response: 228999168
Conc: 37.11 ng/ml