

Data Path : Z:\pestpcbsrv\HPCHEM1\ECD_Q\Data\PQ061721\
 Data File : PQ053924.D
 Signal(s) : Signal #1: ECD1A.ch Signal #2: ECD2B.ch
 Acq On : 17 Jun 2021 15:44
 Operator : DD\AJ
 Sample : AR1254CCC400
 Misc :
 ALS Vial : 141 Sample Multiplier: 1

Instrument :
 ECD_Q
 ClientSampleId :

Integration File signal 1: autoint1.e
 Integration File signal 2: autoint2.e
 Quant Time: Jun 18 00:17:39 2021
 Quant Method : Z:\pestpcbsrv\HPCHEM1\ECD_Q\Method\PQ061621CLP.M
 Quant Title : GC EXTRACTABLES
 QLast Update : Thu Jun 17 06:07:32 2021
 Response via : Initial Calibration
 Integrator: ChemStation

Volume Inj. : 1 µl
 Signal #1 Phase : ZB MR1 Signal #2 Phase: ZB MR2
 Signal #1 Info : 30Mx0.32mmx 0.5µm Signal #2 Info : 30M x 0.32mm x 0.25µm

Compound	RT#1	RT#2	Resp#1	Resp#2	ng/ml	ng/ml
System Monitoring Compounds						
1) SA Tetrachlo...	5.217	4.231	460.7E6	257.8E6	17.106	17.277
2) SA Decachlor...	11.404	9.566	772.1E6	515.9E6	37.716	44.945
Target Compounds						
3) L1 AR-1016-1	6.546	5.492	12067346	6934495	13.321	12.505
4) L1 AR-1016-2	6.573	5.512	15310394	6485020	10.397	7.945
5) L1 AR-1016-3	6.573f	5.705	15310394	3801660	17.088	8.945 #
6) L1 AR-1016-4	0.000	5.753	0	182.3E6	N.D.	529.887 #
7) L1 AR-1016-5	7.055	5.983	169.6E6	107.5E6	252.381	247.781
9) L2 AR-1221-2	5.575	4.587	6003438	3739706	30.543	32.515
10) L2 AR-1221-3	0.000	4.679	0	1995335	N.D.	4.946 #
11) L3 AR-1232-1	0.000	4.679	0	1995335	N.D.	5.995 #
12) L3 AR-1232-2	0.000	5.512	0	6485020	N.D.	17.566 #
13) L3 AR-1232-3	6.573	5.705	15310394	3801660	23.058	20.313
14) L3 AR-1232-4	0.000	5.797	0	53425837	N.D.	327.904 #
15) L3 AR-1232-5	6.835	5.983	289.7E6	107.5E6	1251.545	618.236 #
16) L4 AR-1242-1	6.546	5.492	12067346	6934495	14.215	12.824
17) L4 AR-1242-2	6.573	5.512	15310394	6485020	10.677	8.320
18) L4 AR-1242-3	6.573f	5.705	15310394	3801660	17.308	9.174 #
19) L4 AR-1242-4	0.000	5.797	0	53425837	N.D.	133.739 #
20) L4 AR-1242-5	7.526	6.362	171.8E6	492.7E6	222.318	890.442 #
21) L5 AR-1248-1	6.546	5.492	12067346	6934495	20.687	19.160
22) L5 AR-1248-2	6.835	5.753	289.7E6	182.3E6	325.900	351.687
23) L5 AR-1248-3	7.055	5.797	169.6E6	53425837	170.970	99.994 #
24) L5 AR-1248-4	7.485	5.983	269.7E6	107.5E6	227.477	168.746 #
25) L5 AR-1248-5	7.526	6.407	171.8E6	57385718	143.992	83.804 #
26) L6 AR-1254-1	7.453	6.362	531.3E6	492.7E6	334.749	338.225
27) L6 AR-1254-2	7.680	6.521	840.4E6	440.6E6	336.498	340.149
28) L6 AR-1254-3	8.065	6.942	872.1E6	711.2E6	338.355	340.068
29) L6 AR-1254-4	8.361	7.181	680.8E6	472.1E6	340.908	340.665
30) L6 AR-1254-5	8.788	7.609	679.5E6	663.0E6	342.071	341.565
31) L7 AR-1260-1	8.230	7.079	337.6E6	331.8E6	299.193	386.437 #
32) L7 AR-1260-2	8.492	7.274	422.3E6	325.1E6	301.263	265.380
33) L7 AR-1260-3	8.853	7.429	88515240	285.1E6	79.711	280.572 #
34) L7 AR-1260-4	9.097	7.912	242.4E6	29653655	232.791	33.925 #
35) L7 AR-1260-5	9.447	8.158	117.8E6	83963159	51.402	36.082 #
36) L8 AR-1262-1	8.853	7.609	88515240	663.0E6	50.659	1061.151 #
37) L8 AR-1262-2	9.447	8.158	117.8E6	83963159	41.923	33.068
38) L8 AR-1262-3	9.807	8.446	68200347	2650151	37.749	2.516 #
39) L8 AR-1262-4	9.859	8.507	18109447	66705615	12.849	38.700 #
40) L8 AR-1262-5	0.000	9.012	0	2764870	N.D.	3.733 #
41) L9 AR-1268-1	9.807	8.446	68200347	2650151	18.700	0.826 #
42) L9 AR-1268-2	9.859	8.507	18109447	66705615	5.622	24.877 #

Data Path : Z:\pestpcbsrv\HPCHEM1\ECD_Q\Data\PQ061721\
 Data File : PQ053924.D
 Signal(s) : Signal #1: ECD1A.ch Signal #2: ECD2B.ch
 Acq On : 17 Jun 2021 15:44
 Operator : DD\AJ
 Sample : AR1254CCC400
 Misc :
 ALS Vial : 141 Sample Multiplier: 1

Instrument :
 ECD_Q
 ClientSampleId :

Integration File signal 1: autoint1.e
 Integration File signal 2: autoint2.e
 Quant Time: Jun 18 00:17:39 2021
 Quant Method : Z:\pestpcbsrv\HPCHEM1\ECD_Q\Method\PQ061621CLP.M
 Quant Title : GC EXTRACTABLES
 QLast Update : Thu Jun 17 06:07:32 2021
 Response via : Initial Calibration
 Integrator: ChemStation

Volume Inj. : 1 µl
 Signal #1 Phase : ZB MR1 Signal #2 Phase: ZB MR2
 Signal #1 Info : 30Mx0.32mmx 0.5µm Signal #2 Info : 30M x 0.32mm x 0.25µm

	Compound	RT#1	RT#2	Resp#1	Resp#2	ng/ml	ng/ml
43)	L9 AR-1268-3	0.000	8.718	0	1534043	N.D.	0.660 #
44)	L9 AR-1268-4	0.000	9.012	0	2764870	N.D.	3.231 #
45)	L9 AR-1268-5	0.000	9.310	0	3704269	N.D.	0.600 #

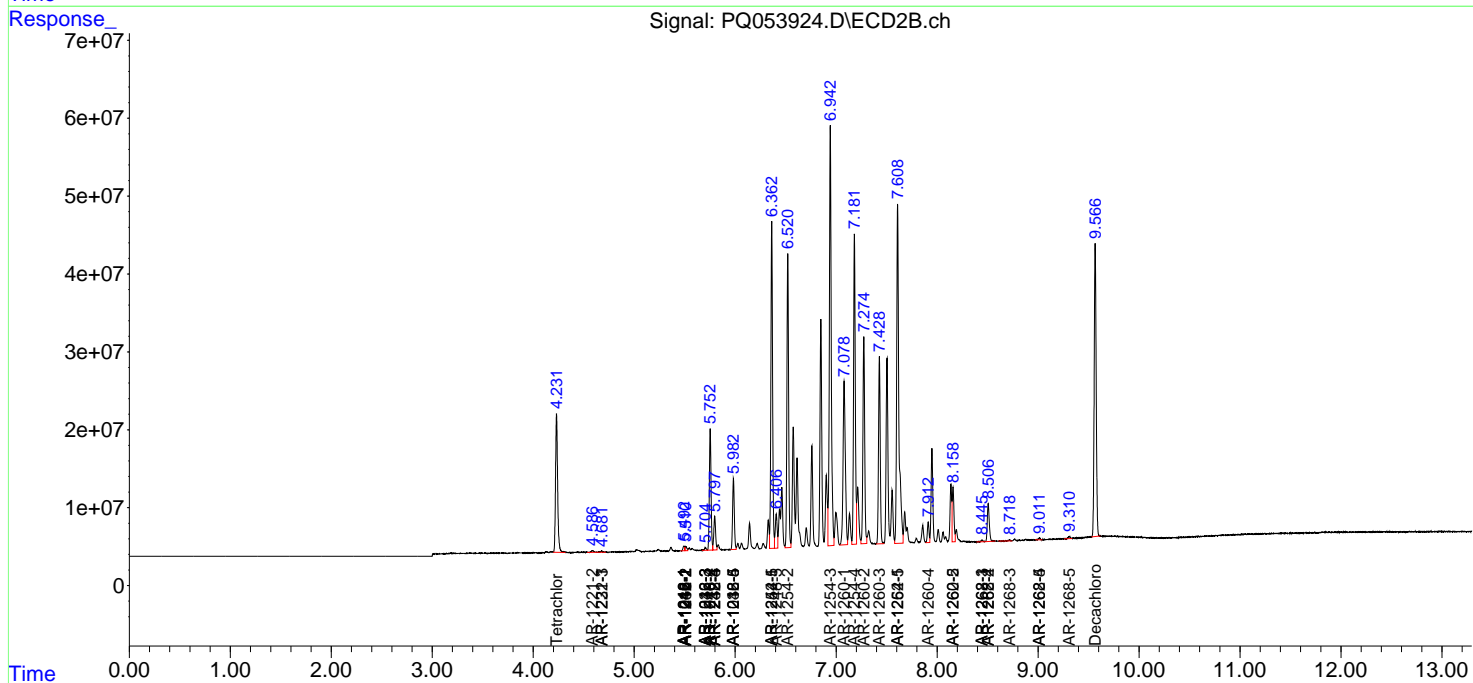
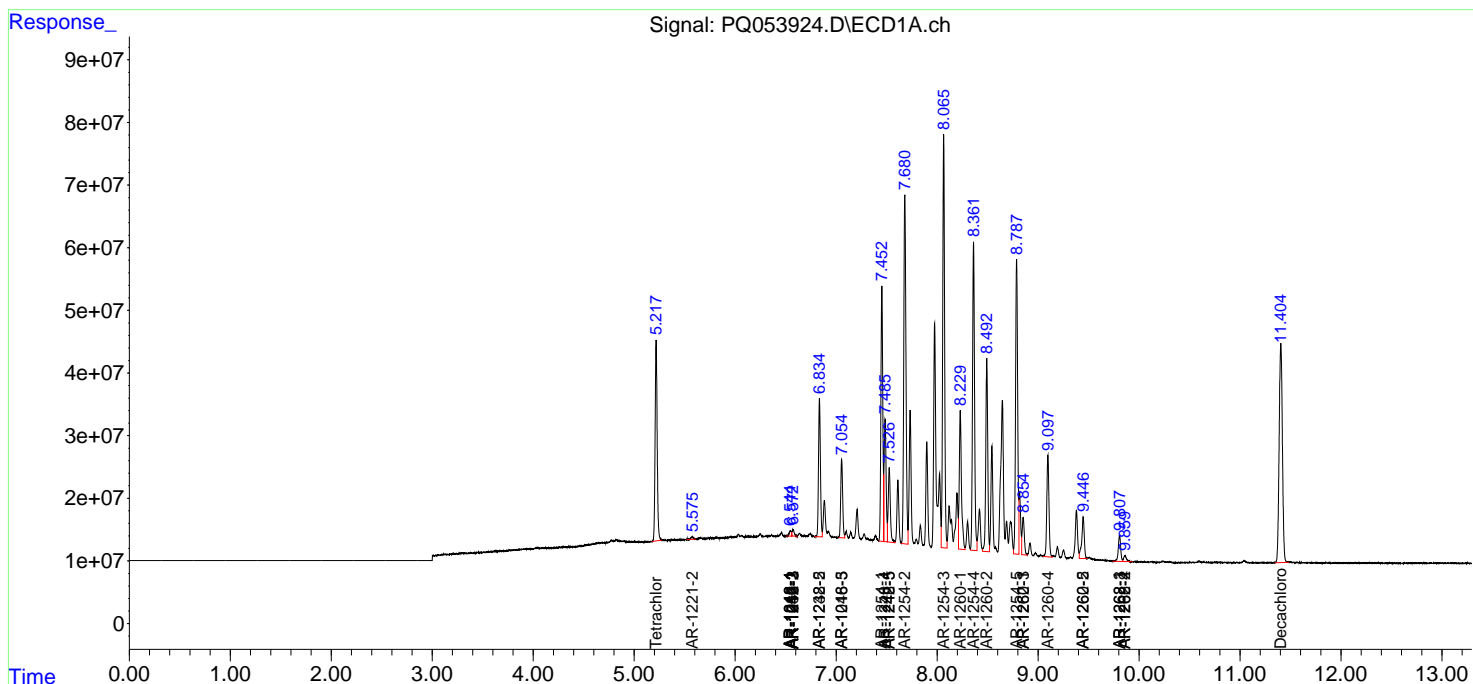
(f)=RT Delta > 1/2 Window (#)=Amounts differ by > 25% (m)=manual int.

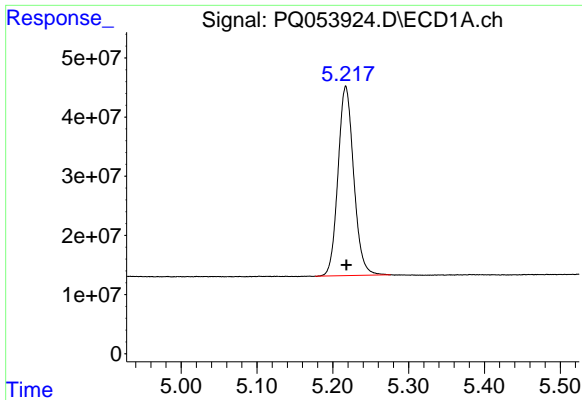
Data Path : Z:\pestpcbsrv\HPCHEM1\ECD_Q\Data\PQ061721\
 Data File : PQ053924.D
 Signal(s) : Signal #1: ECD1A.ch Signal #2: ECD2B.ch
 Acq On : 17 Jun 2021 15:44
 Operator : DD\AJ
 Sample : AR1254CCC400
 Misc :
 ALS Vial : 141 Sample Multiplier: 1

Instrument :
 ECD_Q
 ClientSampled :

Integration File signal 1: autoint1.e
 Integration File signal 2: autoint2.e
 Quant Time: Jun 18 00:17:39 2021
 Quant Method : Z:\pestpcbsrv\HPCHEM1\ECD_Q\Method\PQ061621CLP.M
 Quant Title : GC EXTRACTABLES
 QLast Update : Thu Jun 17 06:07:32 2021
 Response via : Initial Calibration
 Integrator: ChemStation

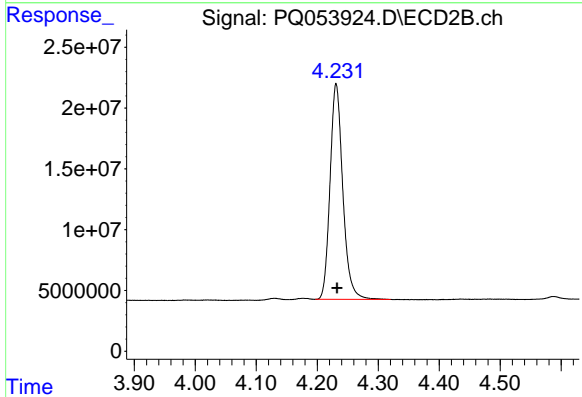
Volume Inj. : 1 µl
 Signal #1 Phase : ZB MR1 Signal #2 Phase: ZB MR2
 Signal #1 Info : 30Mx0.32mmx 0.5µm Signal #2 Info : 30M x 0.32mm x 0.25µm



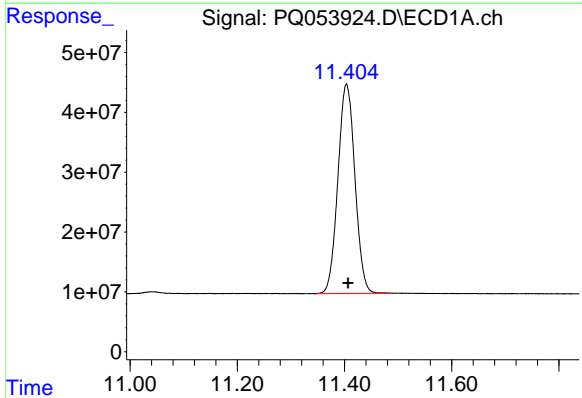


#1 Tetrachloro-m-xylene
 R.T.: 5.217 min
 Delta R.T.: 0.000 min
 Response: 460737745
 Conc: 17.11 ng/ml

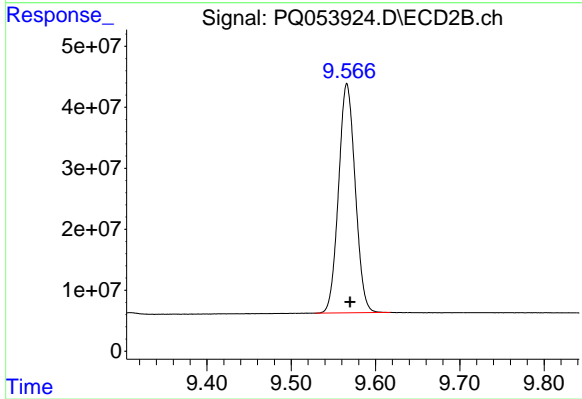
Instrument :
 ECD_Q
 ClientSampleId :



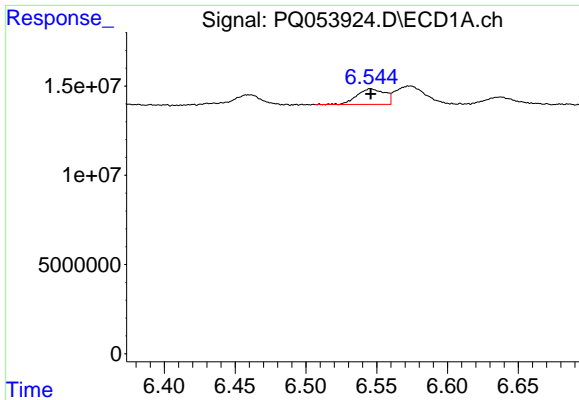
#1 Tetrachloro-m-xylene
 R.T.: 4.231 min
 Delta R.T.: -0.002 min
 Response: 257815766
 Conc: 17.28 ng/ml



#2 Decachlorobiphenyl
 R.T.: 11.404 min
 Delta R.T.: -0.003 min
 Response: 772105866
 Conc: 37.72 ng/ml

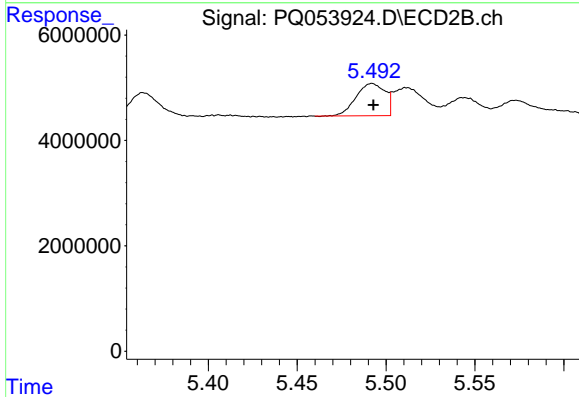


#2 Decachlorobiphenyl
 R.T.: 9.566 min
 Delta R.T.: -0.004 min
 Response: 515890086
 Conc: 44.95 ng/ml

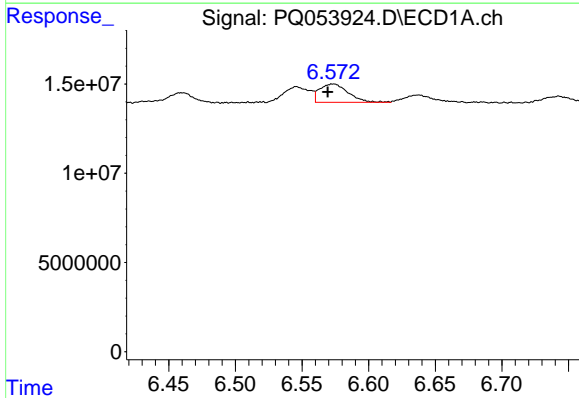


#3 AR-1016-1
 R.T.: 6.546 min
 Delta R.T.: 0.000 min
 Response: 12067346
 Conc: 13.32 ng/ml

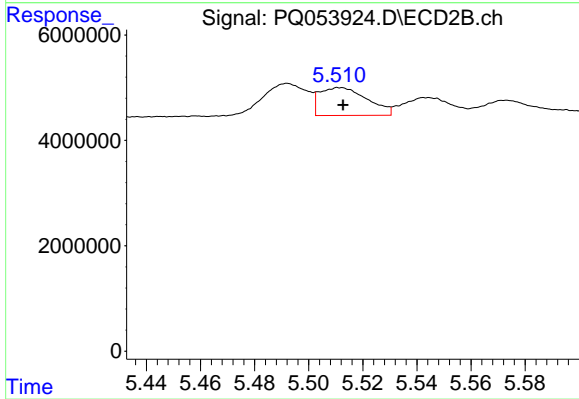
Instrument :
 ECD_Q
 ClientSampleId :



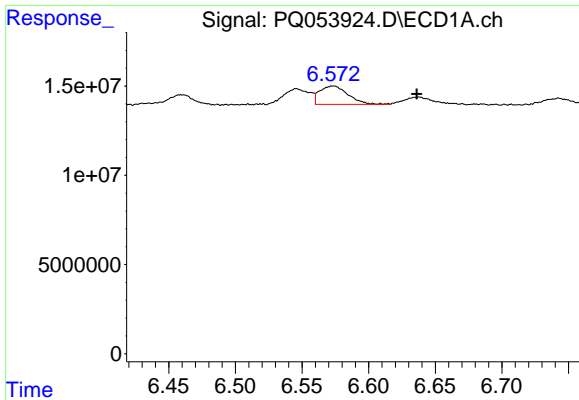
#3 AR-1016-1
 R.T.: 5.492 min
 Delta R.T.: 0.000 min
 Response: 6934495
 Conc: 12.50 ng/ml



#4 AR-1016-2
 R.T.: 6.573 min
 Delta R.T.: 0.004 min
 Response: 15310394
 Conc: 10.40 ng/ml



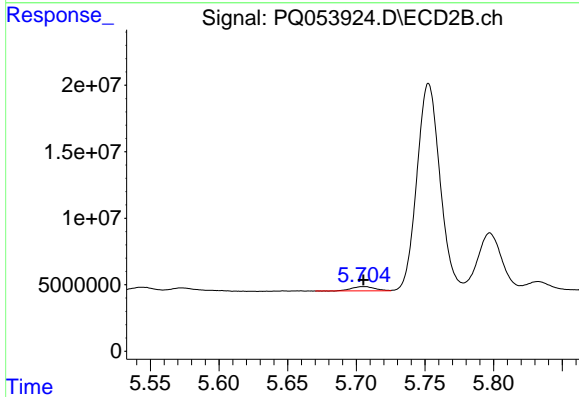
#4 AR-1016-2
 R.T.: 5.512 min
 Delta R.T.: -0.001 min
 Response: 6485020
 Conc: 7.94 ng/ml



#5 AR-1016-3

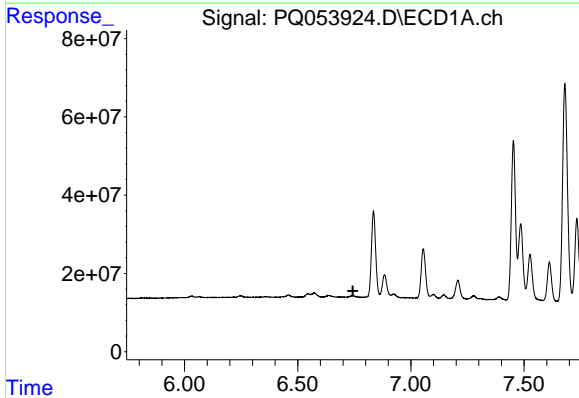
R.T.: 6.573 min
 Delta R.T.: -0.063 min
 Response: 15310394
 Conc: 17.09 ng/ml

Instrument :
 ECD_Q
 ClientSampleId :



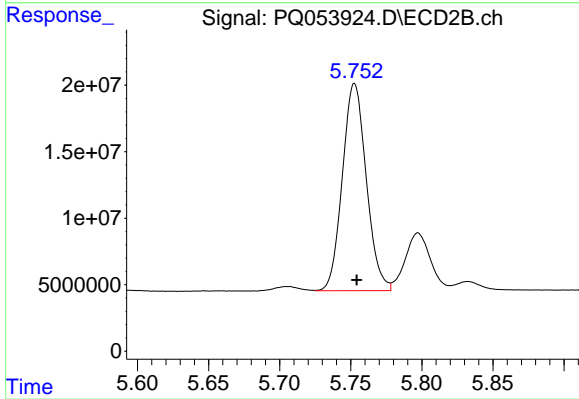
#5 AR-1016-3

R.T.: 5.705 min
 Delta R.T.: 0.000 min
 Response: 3801660
 Conc: 8.94 ng/ml



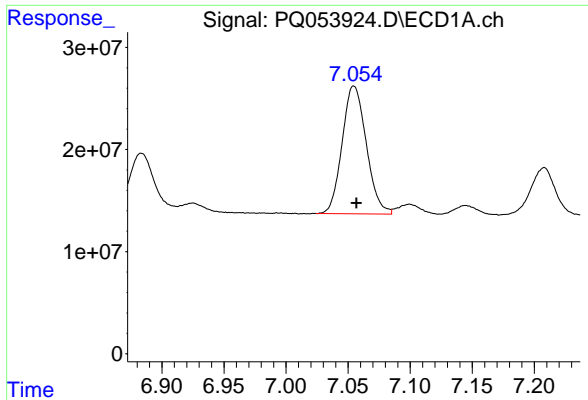
#6 AR-1016-4

R.T.: 0.000 min
 Exp R.T. : 6.744 min
 Response: 0
 Conc: N.D.



#6 AR-1016-4

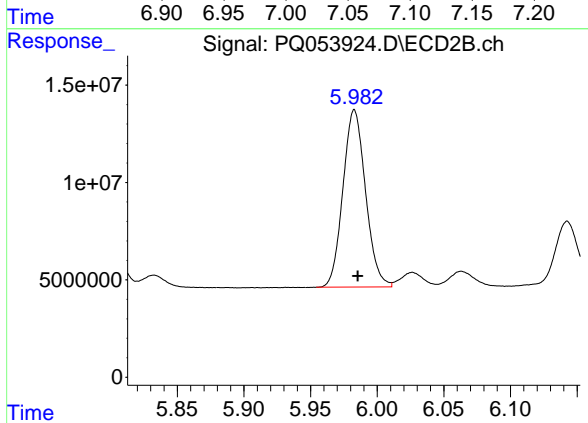
R.T.: 5.753 min
 Delta R.T.: -0.002 min
 Response: 182330737
 Conc: 529.89 ng/ml



#7 AR-1016-5

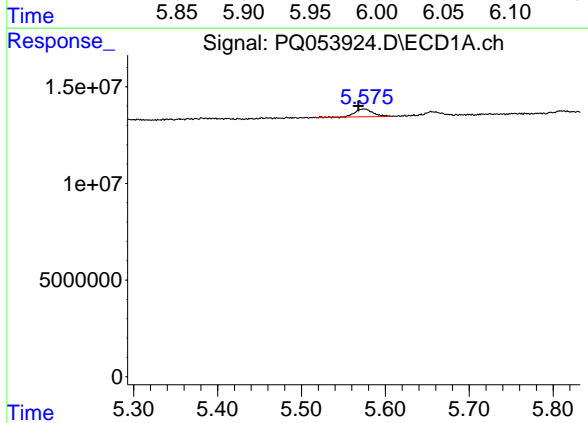
R.T.: 7.055 min
 Delta R.T.: -0.002 min
 Response: 169574843
 Conc: 252.38 ng/ml

Instrument :
 ECD_Q
 ClientSampled :



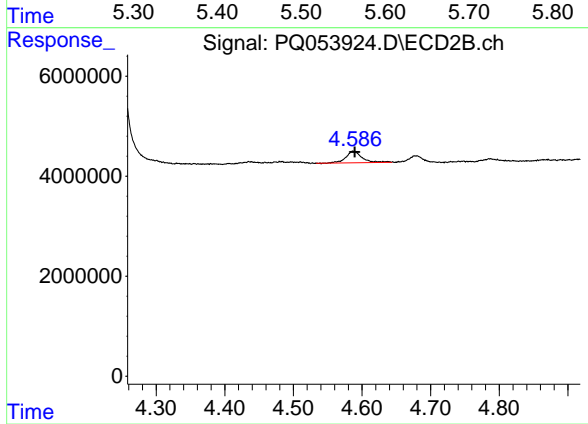
#7 AR-1016-5

R.T.: 5.983 min
 Delta R.T.: -0.002 min
 Response: 107548651
 Conc: 247.78 ng/ml



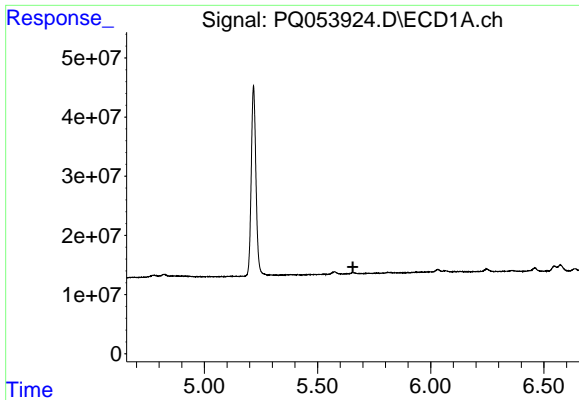
#9 AR-1221-2

R.T.: 5.575 min
 Delta R.T.: 0.007 min
 Response: 6003438
 Conc: 30.54 ng/ml



#9 AR-1221-2

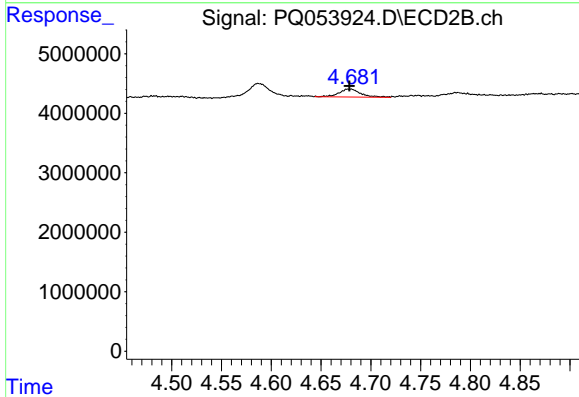
R.T.: 4.587 min
 Delta R.T.: -0.002 min
 Response: 3739706
 Conc: 32.52 ng/ml



#10 AR-1221-3

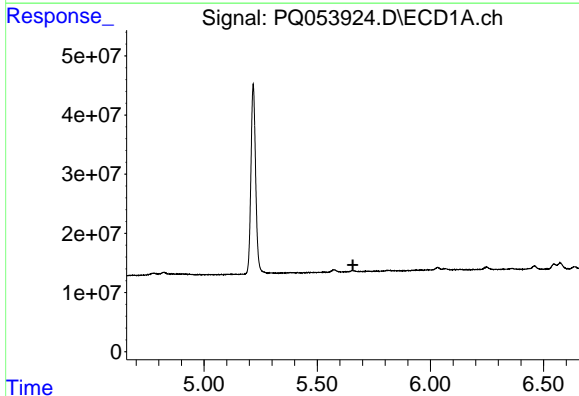
R.T.: 0.000 min
 Exp R.T. : 5.656 min
 Response: 0
 Conc: N.D.

Instrument :
 ECD_Q
 ClientSampleId :



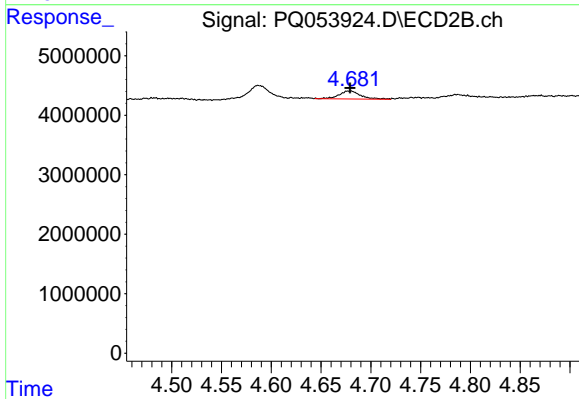
#10 AR-1221-3

R.T.: 4.679 min
 Delta R.T.: 0.000 min
 Response: 1995335
 Conc: 4.95 ng/ml



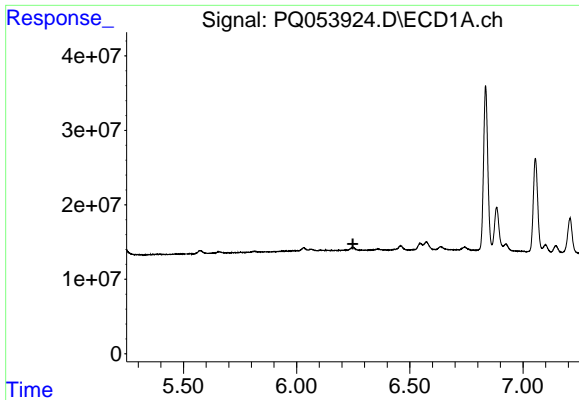
#11 AR-1232-1

R.T.: 0.000 min
 Exp R.T. : 5.657 min
 Response: 0
 Conc: N.D.



#11 AR-1232-1

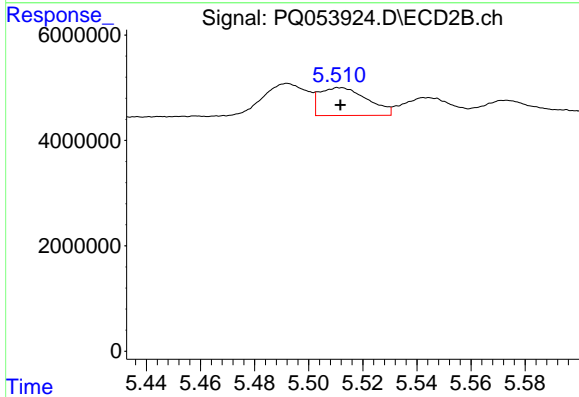
R.T.: 4.679 min
 Delta R.T.: 0.000 min
 Response: 1995335
 Conc: 5.99 ng/ml



#12 AR-1232-2

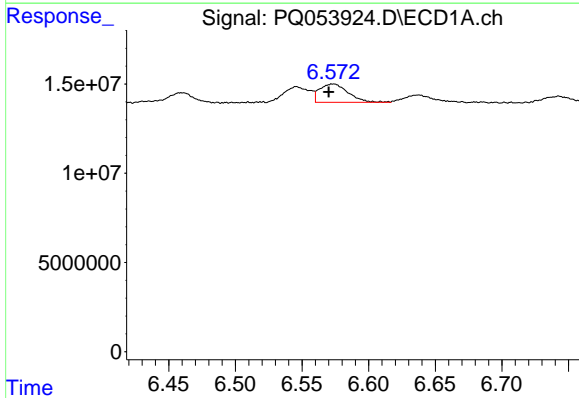
R.T.: 0.000 min
 Exp R.T.: 6.249 min
 Response: 0
 Conc: N.D.

Instrument :
 ECD_Q
 ClientSampled :



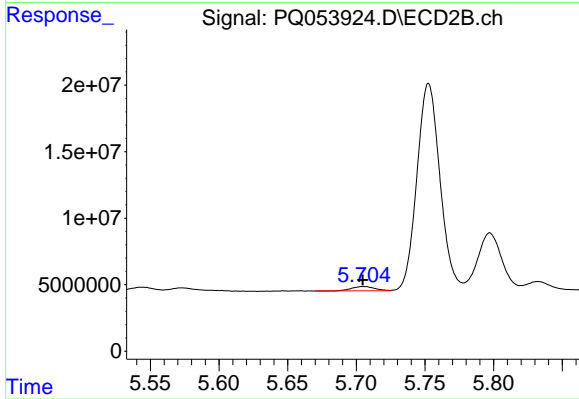
#12 AR-1232-2

R.T.: 5.512 min
 Delta R.T.: 0.000 min
 Response: 6485020
 Conc: 17.57 ng/ml



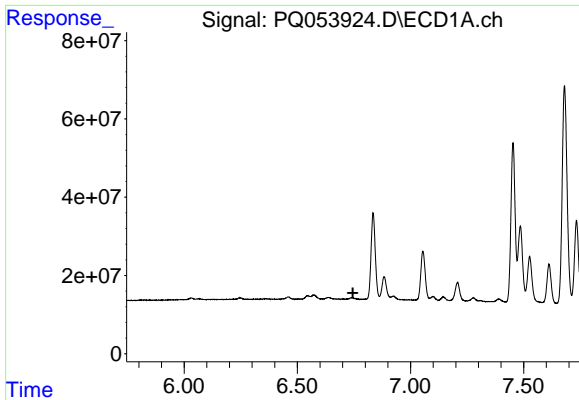
#13 AR-1232-3

R.T.: 6.573 min
 Delta R.T.: 0.003 min
 Response: 15310394
 Conc: 23.06 ng/ml



#13 AR-1232-3

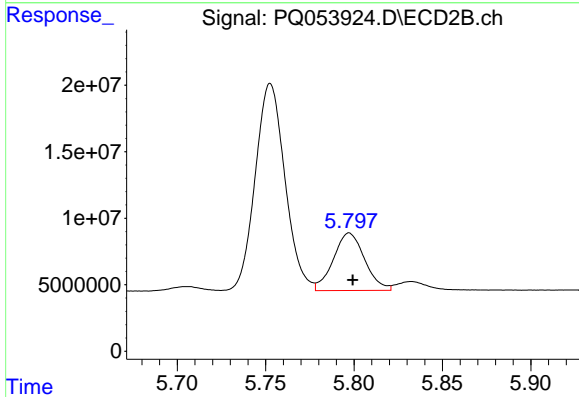
R.T.: 5.705 min
 Delta R.T.: 0.000 min
 Response: 3801660
 Conc: 20.31 ng/ml



#14 AR-1232-4

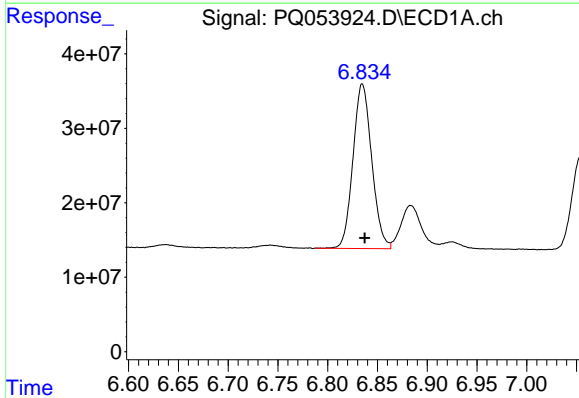
R.T.: 0.000 min
 Exp R.T.: 6.745 min
 Response: 0
 Conc: N.D.

Instrument :
 ECD_Q
 ClientSampled :



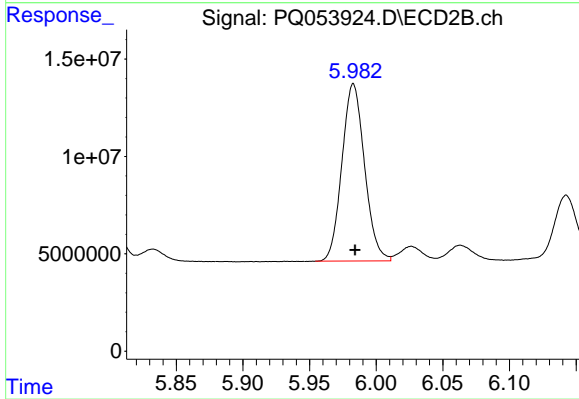
#14 AR-1232-4

R.T.: 5.797 min
 Delta R.T.: -0.002 min
 Response: 53425837
 Conc: 327.90 ng/ml



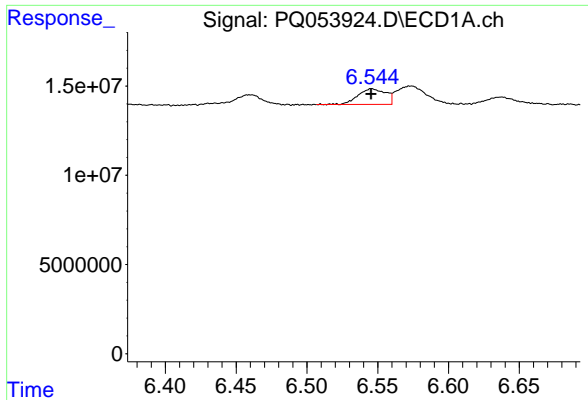
#15 AR-1232-5

R.T.: 6.835 min
 Delta R.T.: -0.002 min
 Response: 289676862
 Conc: 1251.54 ng/ml



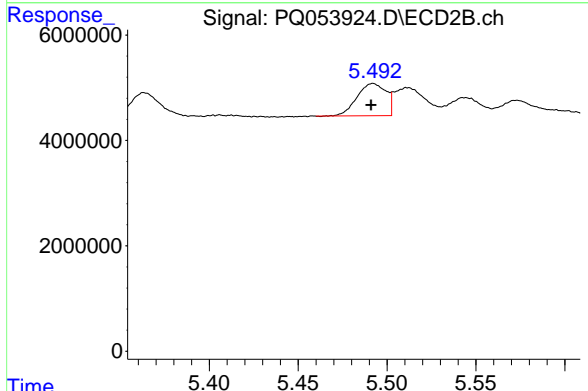
#15 AR-1232-5

R.T.: 5.983 min
 Delta R.T.: -0.001 min
 Response: 107548651
 Conc: 618.24 ng/ml

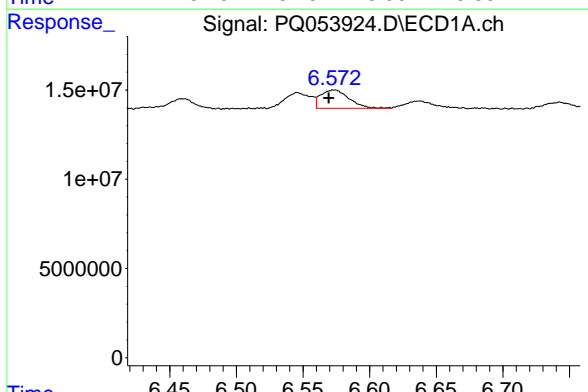


#16 AR-1242-1
 R.T.: 6.546 min
 Delta R.T.: 0.000 min
 Response: 12067346
 Conc: 14.22 ng/ml

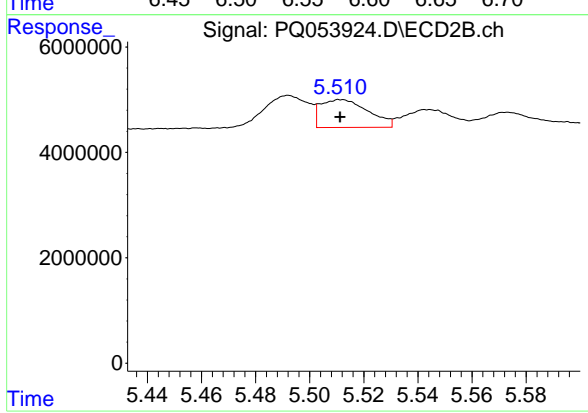
Instrument :
 ECD_Q
 ClientSampled :



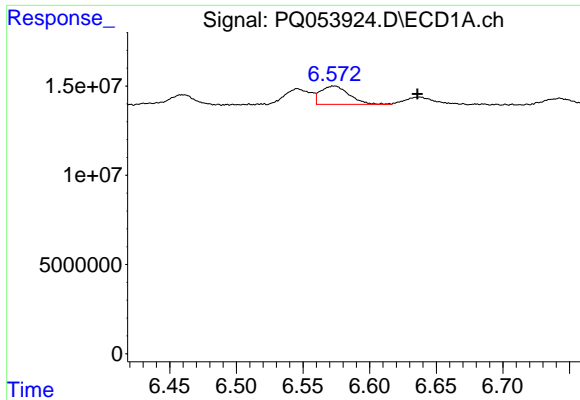
#16 AR-1242-1
 R.T.: 5.492 min
 Delta R.T.: 0.001 min
 Response: 6934495
 Conc: 12.82 ng/ml



#17 AR-1242-2
 R.T.: 6.573 min
 Delta R.T.: 0.004 min
 Response: 15310394
 Conc: 10.68 ng/ml

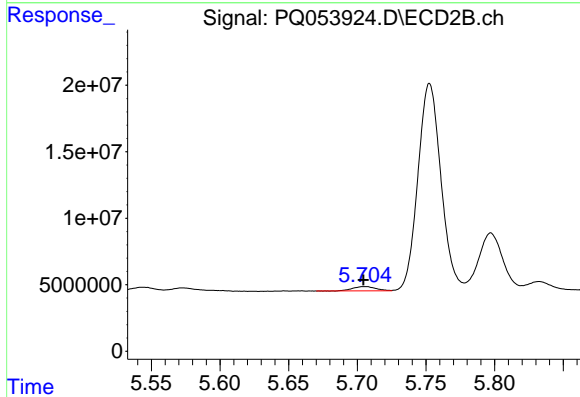


#17 AR-1242-2
 R.T.: 5.512 min
 Delta R.T.: 0.000 min
 Response: 6485020
 Conc: 8.32 ng/ml

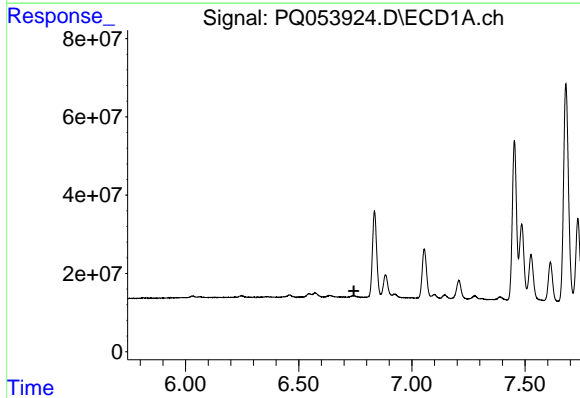


#18 AR-1242-3
 R.T.: 6.573 min
 Delta R.T.: -0.062 min
 Response: 15310394
 Conc: 17.31 ng/ml

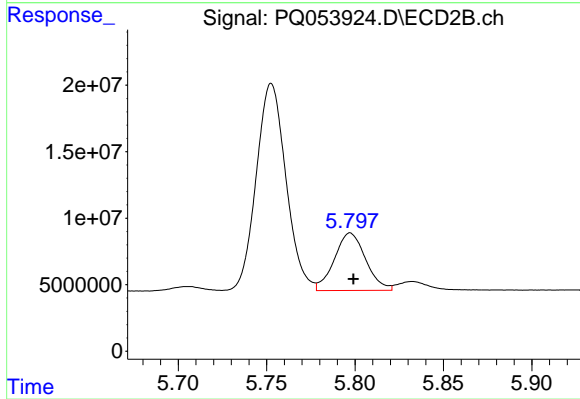
Instrument :
 ECD_Q
 ClientSampleId :



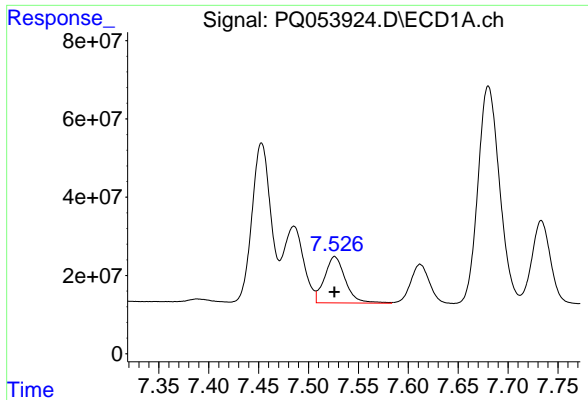
#18 AR-1242-3
 R.T.: 5.705 min
 Delta R.T.: 0.001 min
 Response: 3801660
 Conc: 9.17 ng/ml



#19 AR-1242-4
 R.T.: 0.000 min
 Exp R.T. : 6.744 min
 Response: 0
 Conc: N.D.



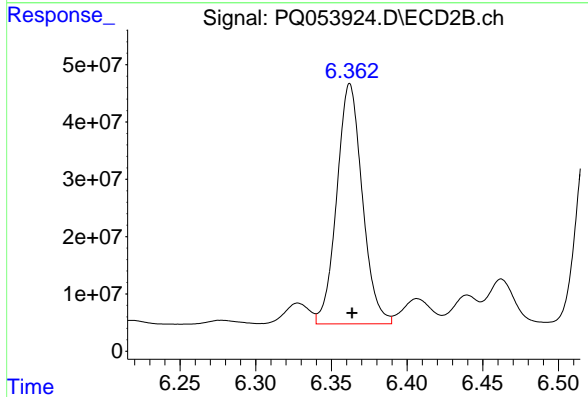
#19 AR-1242-4
 R.T.: 5.797 min
 Delta R.T.: -0.002 min
 Response: 53425837
 Conc: 133.74 ng/ml



#20 AR-1242-5

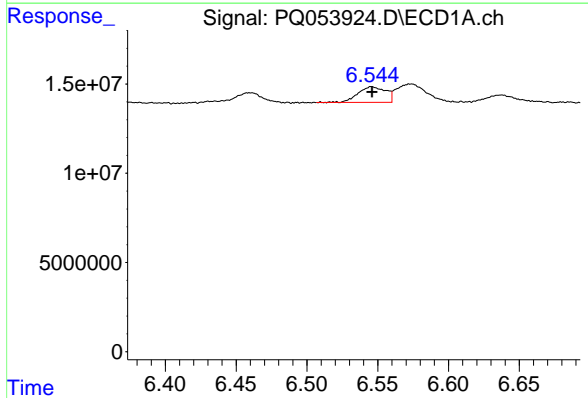
R.T.: 7.526 min
 Delta R.T.: 0.000 min
 Response: 171753269
 Conc: 222.32 ng/ml

Instrument :
 ECD_Q
 ClientSampled :



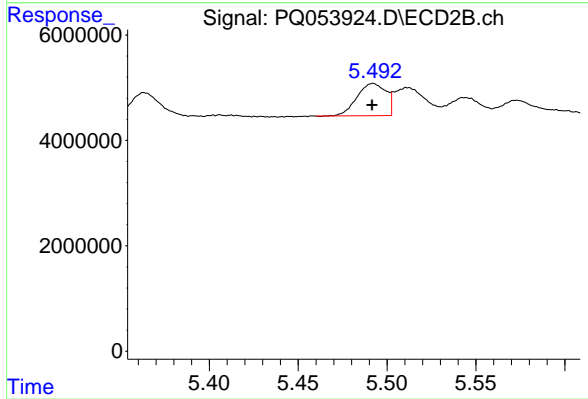
#20 AR-1242-5

R.T.: 6.362 min
 Delta R.T.: -0.001 min
 Response: 492731270
 Conc: 890.44 ng/ml



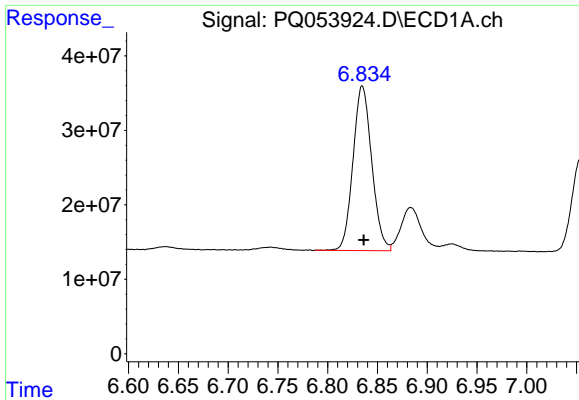
#21 AR-1248-1

R.T.: 6.546 min
 Delta R.T.: 0.000 min
 Response: 12067346
 Conc: 20.69 ng/ml



#21 AR-1248-1

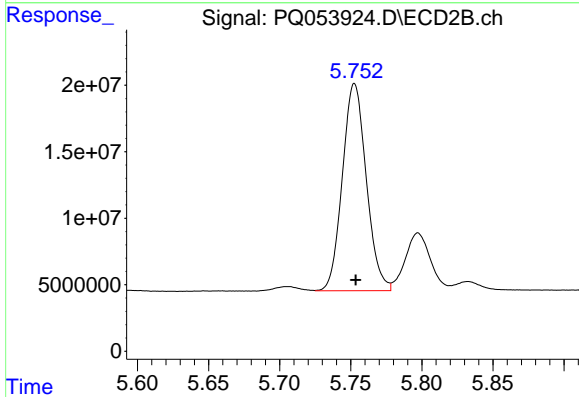
R.T.: 5.492 min
 Delta R.T.: 0.000 min
 Response: 6934495
 Conc: 19.16 ng/ml



#22 AR-1248-2

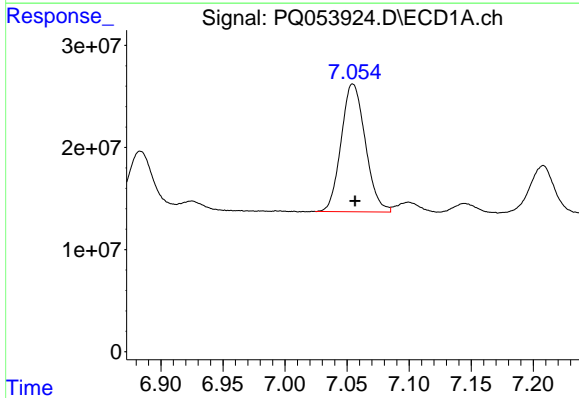
R.T.: 6.835 min
 Delta R.T.: -0.001 min
 Response: 289676862
 Conc: 325.90 ng/ml

Instrument :
 ECD_Q
 ClientSampled :



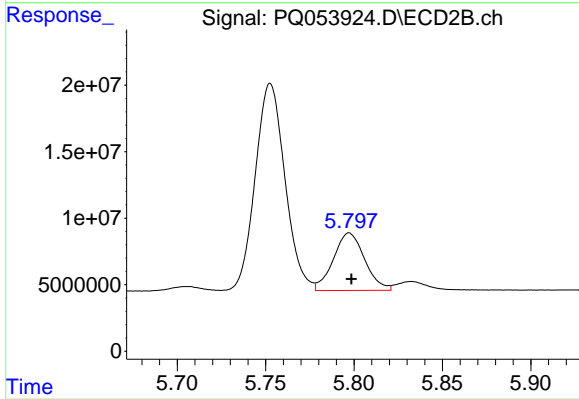
#22 AR-1248-2

R.T.: 5.753 min
 Delta R.T.: 0.000 min
 Response: 182330737
 Conc: 351.69 ng/ml



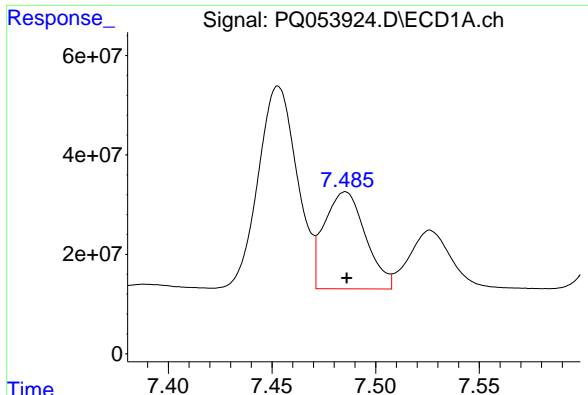
#23 AR-1248-3

R.T.: 7.055 min
 Delta R.T.: -0.002 min
 Response: 169574843
 Conc: 170.97 ng/ml



#23 AR-1248-3

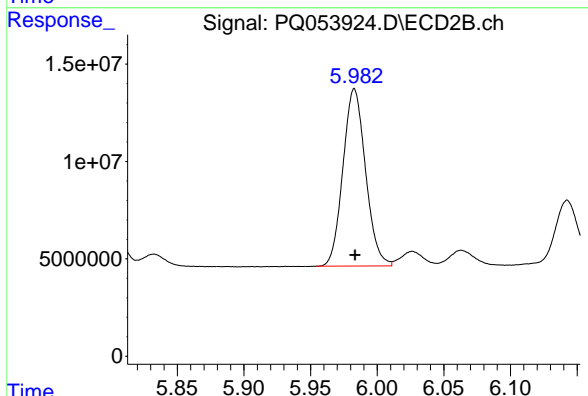
R.T.: 5.797 min
 Delta R.T.: -0.001 min
 Response: 53425837
 Conc: 99.99 ng/ml



#24 AR-1248-4

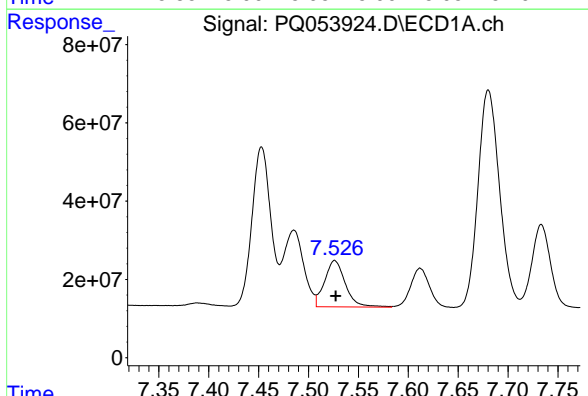
R.T.: 7.485 min
 Delta R.T.: 0.000 min
 Response: 269744350
 Conc: 227.48 ng/ml

Instrument :
 ECD_Q
 ClientSampled :



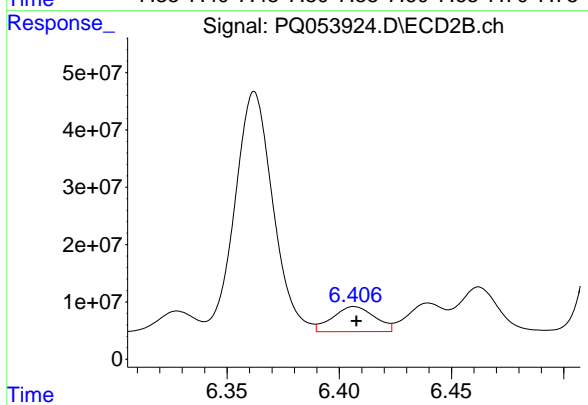
#24 AR-1248-4

R.T.: 5.983 min
 Delta R.T.: 0.000 min
 Response: 107548651
 Conc: 168.75 ng/ml



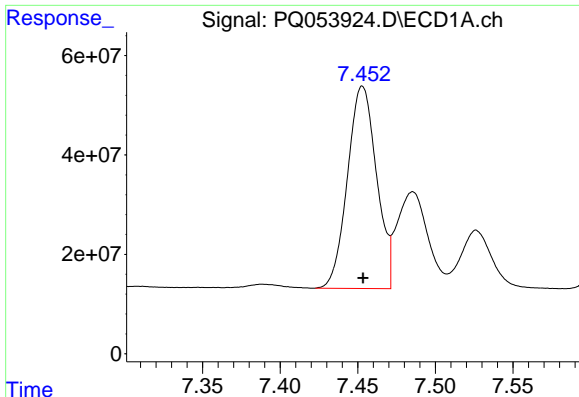
#25 AR-1248-5

R.T.: 7.526 min
 Delta R.T.: -0.001 min
 Response: 171753269
 Conc: 143.99 ng/ml



#25 AR-1248-5

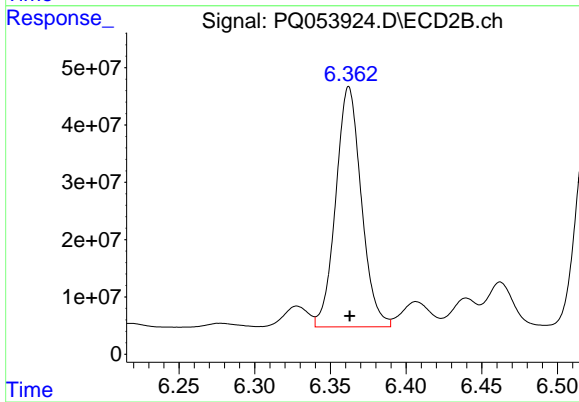
R.T.: 6.407 min
 Delta R.T.: 0.000 min
 Response: 57385718
 Conc: 83.80 ng/ml



#26 AR-1254-1

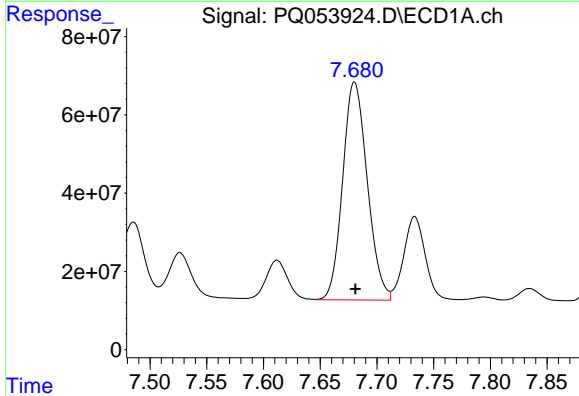
R.T.: 7.453 min
 Delta R.T.: 0.000 min
 Response: 531255248
 Conc: 334.75 ng/ml

Instrument :
 ECD_Q
 ClientSampled :



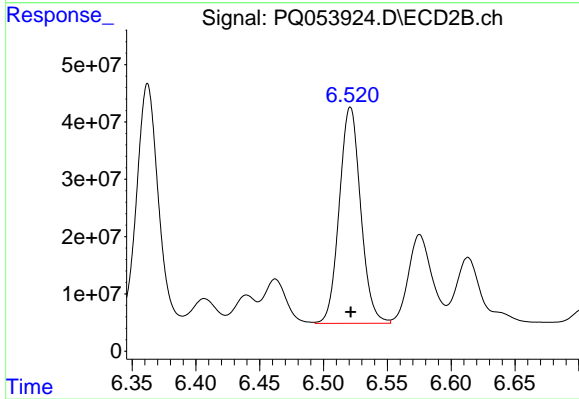
#26 AR-1254-1

R.T.: 6.362 min
 Delta R.T.: 0.000 min
 Response: 492731270
 Conc: 338.22 ng/ml



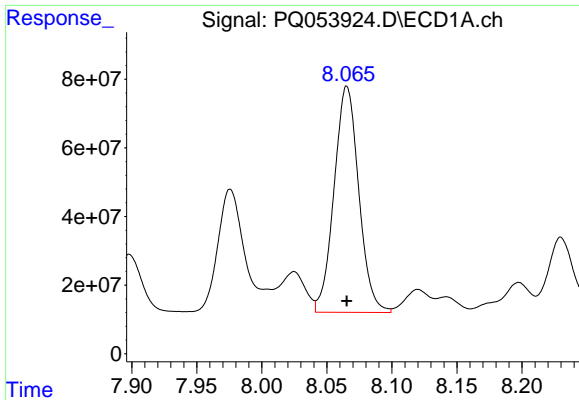
#27 AR-1254-2

R.T.: 7.680 min
 Delta R.T.: 0.000 min
 Response: 840426548
 Conc: 336.50 ng/ml



#27 AR-1254-2

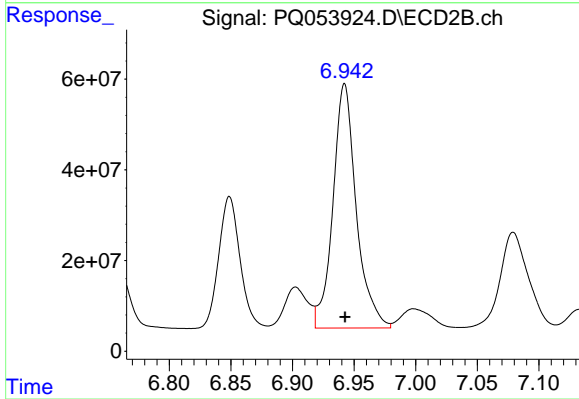
R.T.: 6.521 min
 Delta R.T.: 0.000 min
 Response: 440642395
 Conc: 340.15 ng/ml



#28 AR-1254-3

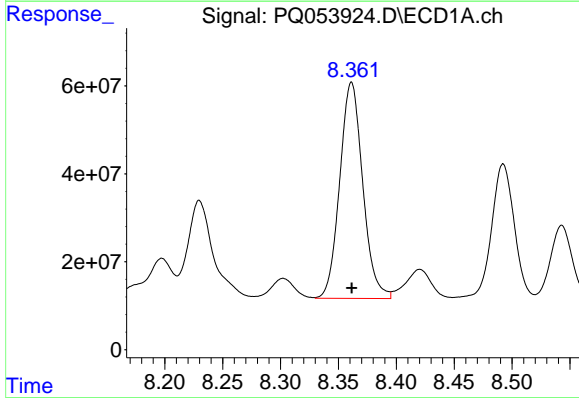
R.T.: 8.065 min
 Delta R.T.: 0.000 min
 Response: 872095909
 Conc: 338.35 ng/ml

Instrument :
 ECD_Q
 ClientSampleId :



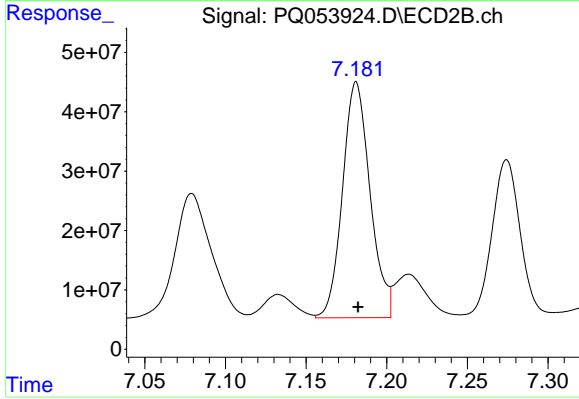
#28 AR-1254-3

R.T.: 6.942 min
 Delta R.T.: 0.000 min
 Response: 711235730
 Conc: 340.07 ng/ml



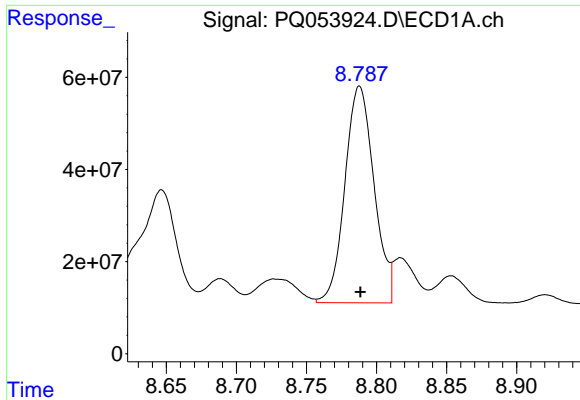
#29 AR-1254-4

R.T.: 8.361 min
 Delta R.T.: 0.000 min
 Response: 680802012
 Conc: 340.91 ng/ml



#29 AR-1254-4

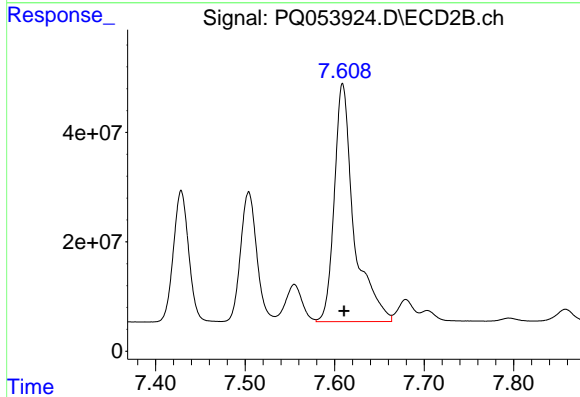
R.T.: 7.181 min
 Delta R.T.: -0.001 min
 Response: 472077908
 Conc: 340.67 ng/ml



#30 AR-1254-5

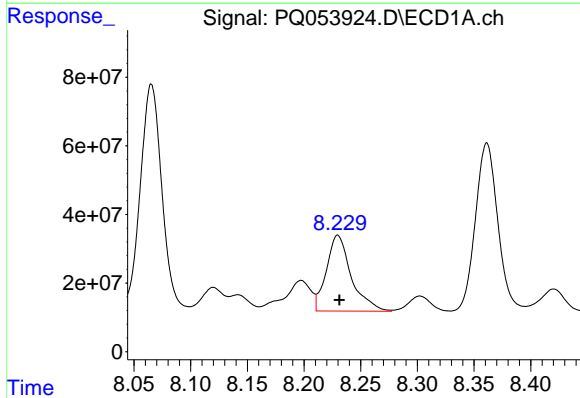
R.T.: 8.788 min
 Delta R.T.: 0.000 min
 Response: 679543879
 Conc: 342.07 ng/ml

Instrument :
 ECD_Q
 ClientSampleId :



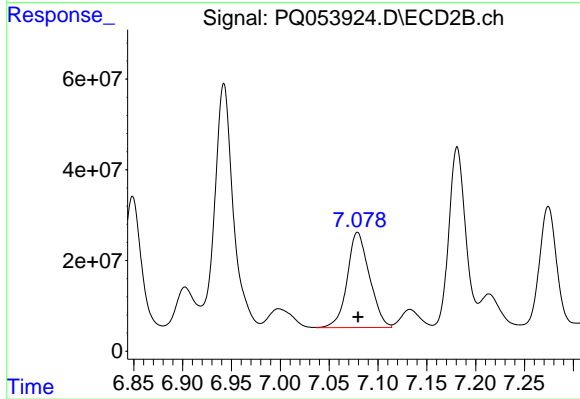
#30 AR-1254-5

R.T.: 7.609 min
 Delta R.T.: -0.002 min
 Response: 662990027
 Conc: 341.57 ng/ml



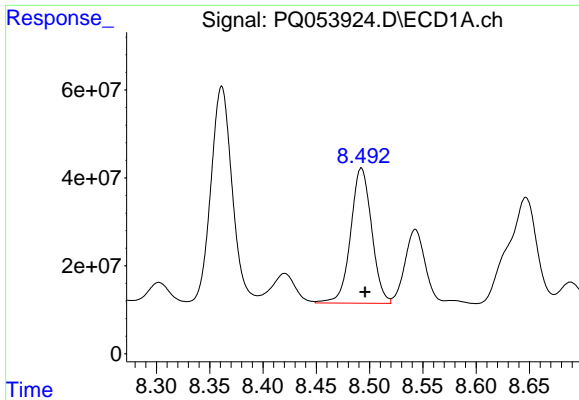
#31 AR-1260-1

R.T.: 8.230 min
 Delta R.T.: -0.001 min
 Response: 337562748
 Conc: 299.19 ng/ml



#31 AR-1260-1

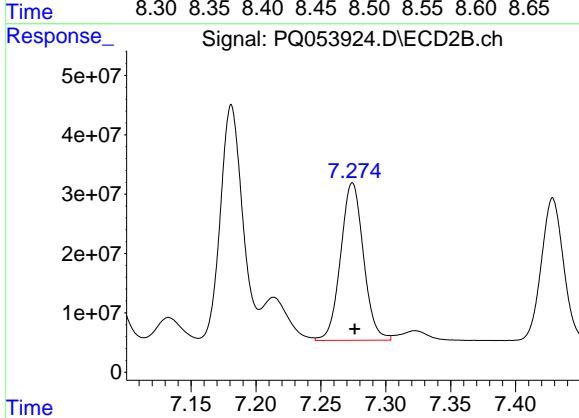
R.T.: 7.079 min
 Delta R.T.: 0.000 min
 Response: 331815324
 Conc: 386.44 ng/ml



#32 AR-1260-2

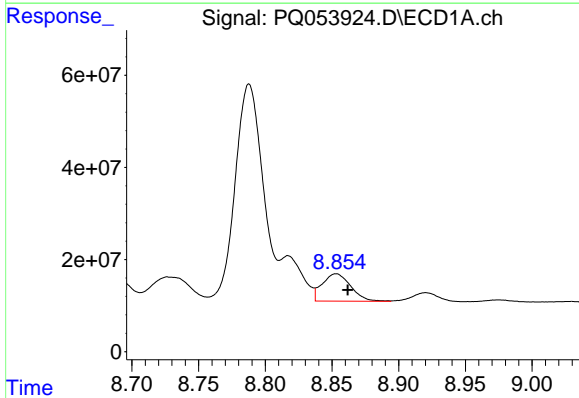
R.T.: 8.492 min
Delta R.T.: -0.003 min
Response: 422255121
Conc: 301.26 ng/ml

Instrument :
ECD_Q
ClientSampleId :



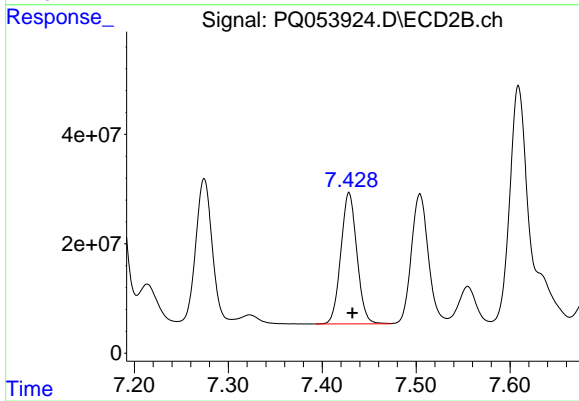
#32 AR-1260-2

R.T.: 7.274 min
Delta R.T.: -0.002 min
Response: 325119224
Conc: 265.38 ng/ml



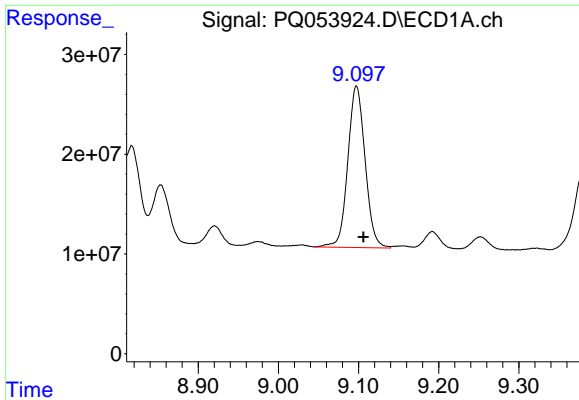
#33 AR-1260-3

R.T.: 8.853 min
Delta R.T.: -0.008 min
Response: 88515240
Conc: 79.71 ng/ml



#33 AR-1260-3

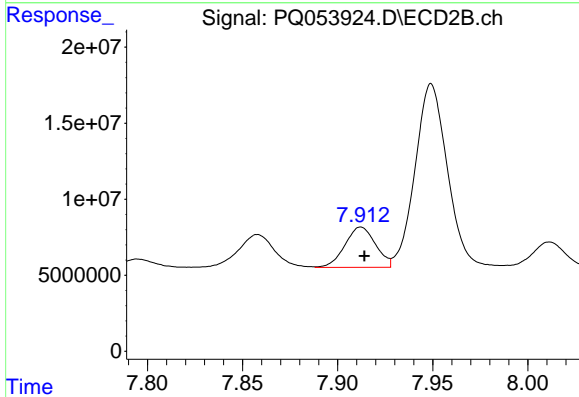
R.T.: 7.429 min
Delta R.T.: -0.003 min
Response: 285102810
Conc: 280.57 ng/ml



#34 AR-1260-4

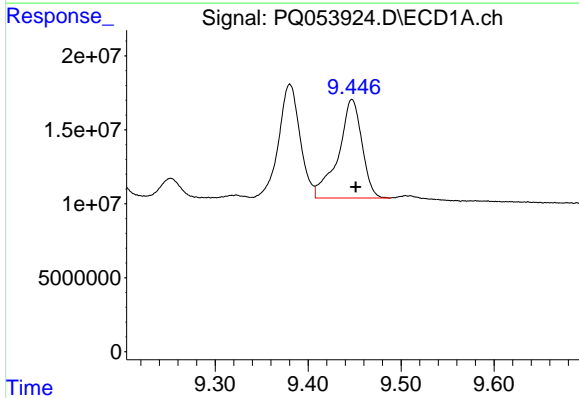
R.T.: 9.097 min
 Delta R.T.: -0.008 min
 Response: 242359846
 Conc: 232.79 ng/ml

Instrument :
 ECD_Q
 ClientSampled :



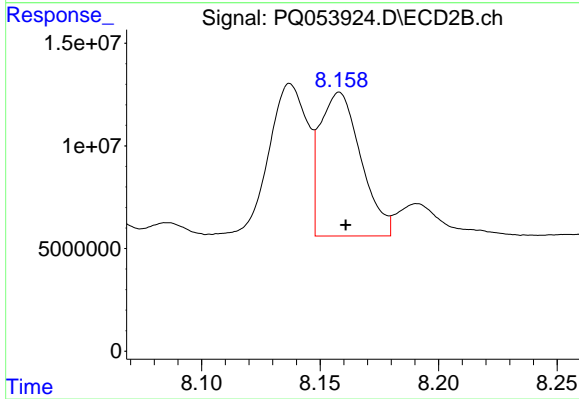
#34 AR-1260-4

R.T.: 7.912 min
 Delta R.T.: -0.002 min
 Response: 29653655
 Conc: 33.92 ng/ml



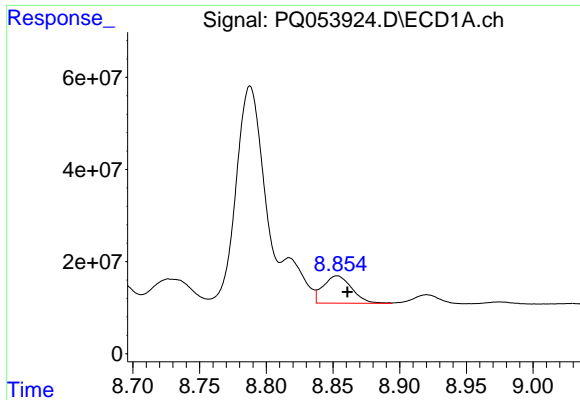
#35 AR-1260-5

R.T.: 9.447 min
 Delta R.T.: -0.004 min
 Response: 117824156
 Conc: 51.40 ng/ml



#35 AR-1260-5

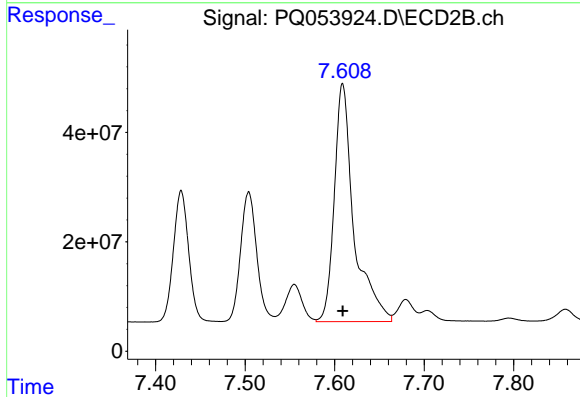
R.T.: 8.158 min
 Delta R.T.: -0.003 min
 Response: 83963159
 Conc: 36.08 ng/ml



#36 AR-1262-1

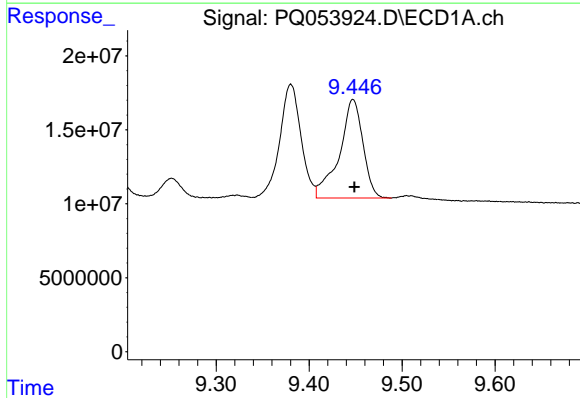
R.T.: 8.853 min
 Delta R.T.: -0.008 min
 Response: 88515240
 Conc: 50.66 ng/ml

Instrument :
 ECD_Q
 ClientSampled :



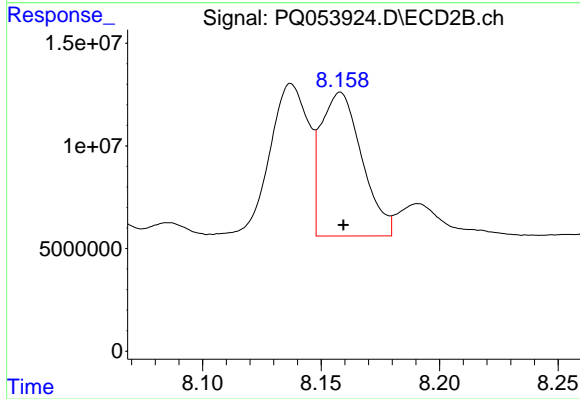
#36 AR-1262-1

R.T.: 7.609 min
 Delta R.T.: 0.000 min
 Response: 662990027
 Conc: 1061.15 ng/ml



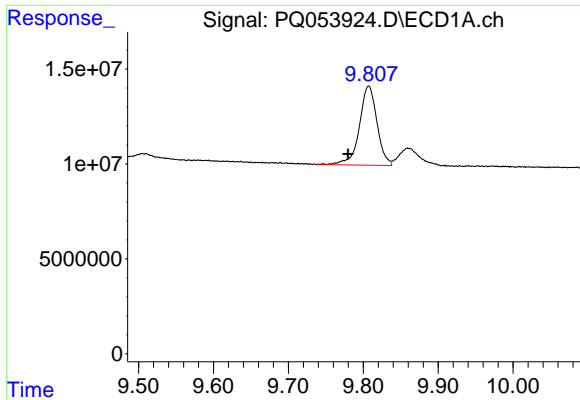
#37 AR-1262-2

R.T.: 9.447 min
 Delta R.T.: -0.001 min
 Response: 117824156
 Conc: 41.92 ng/ml



#37 AR-1262-2

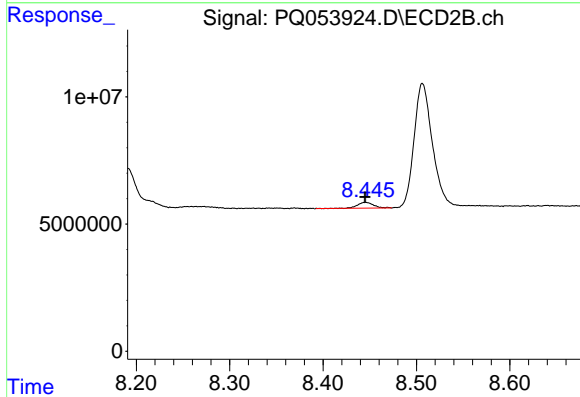
R.T.: 8.158 min
 Delta R.T.: -0.001 min
 Response: 83963159
 Conc: 33.07 ng/ml



#38 AR-1262-3

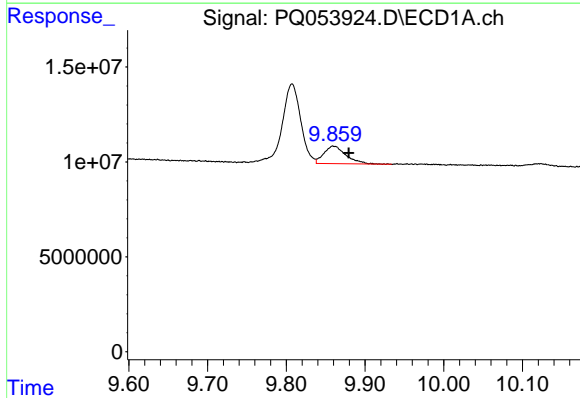
R.T.: 9.807 min
 Delta R.T.: 0.028 min
 Response: 68200347
 Conc: 37.75 ng/ml

Instrument :
 ECD_Q
 ClientSampled :



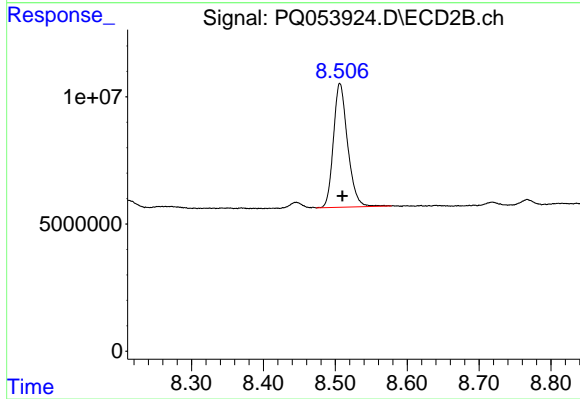
#38 AR-1262-3

R.T.: 8.446 min
 Delta R.T.: 0.000 min
 Response: 2650151
 Conc: 2.52 ng/ml



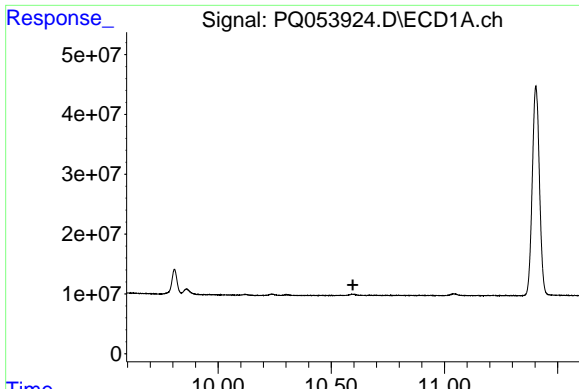
#39 AR-1262-4

R.T.: 9.859 min
 Delta R.T.: -0.020 min
 Response: 18109447
 Conc: 12.85 ng/ml



#39 AR-1262-4

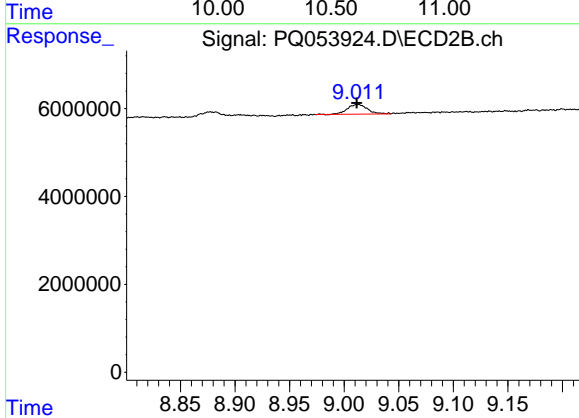
R.T.: 8.507 min
 Delta R.T.: -0.004 min
 Response: 66705615
 Conc: 38.70 ng/ml



#40 AR-1262-5

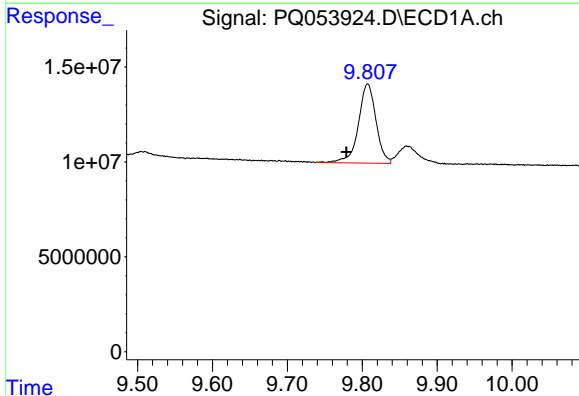
R.T.: 0.000 min
 Exp R.T.: 10.595 min
 Response: 0
 Conc: N.D.

Instrument :
 ECD_Q
 ClientSampleId :



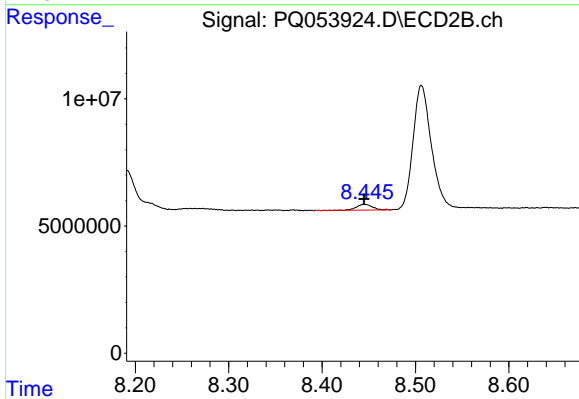
#40 AR-1262-5

R.T.: 9.012 min
 Delta R.T.: 0.000 min
 Response: 2764870
 Conc: 3.73 ng/ml



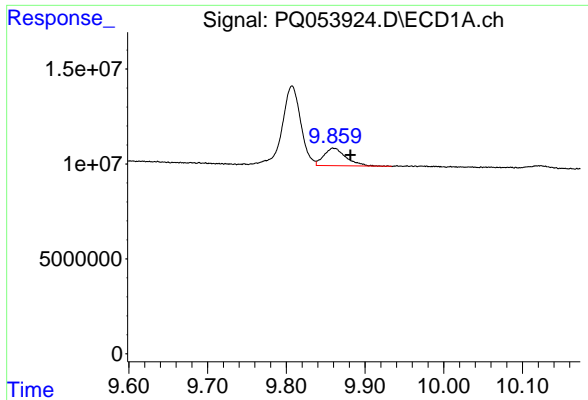
#41 AR-1268-1

R.T.: 9.807 min
 Delta R.T.: 0.029 min
 Response: 68200347
 Conc: 18.70 ng/ml



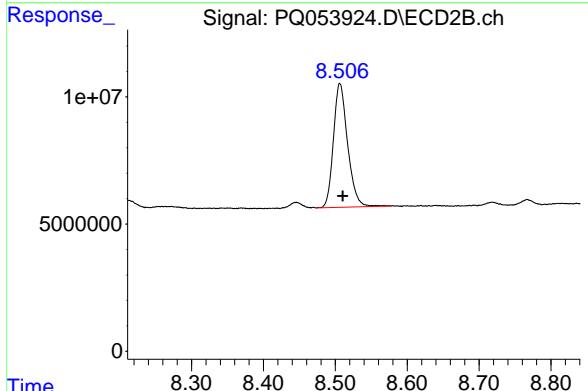
#41 AR-1268-1

R.T.: 8.446 min
 Delta R.T.: 0.000 min
 Response: 2650151
 Conc: 0.83 ng/ml

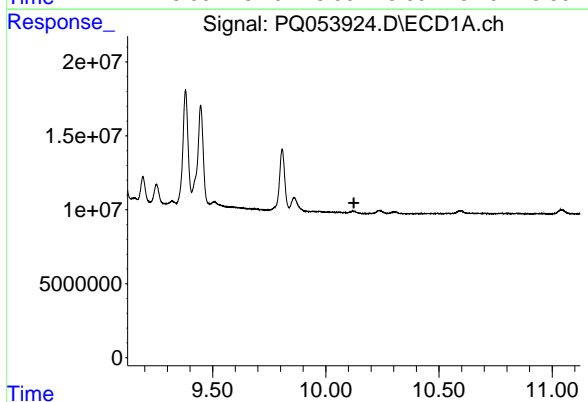


#42 AR-1268-2
 R.T.: 9.859 min
 Delta R.T.: -0.022 min
 Response: 18109447
 Conc: 5.62 ng/ml

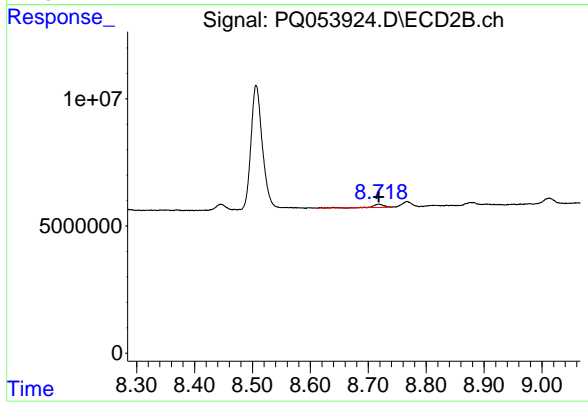
Instrument :
 ECD_Q
 ClientSampled :



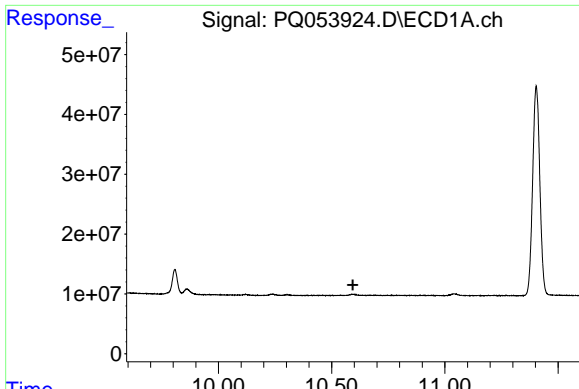
#42 AR-1268-2
 R.T.: 8.507 min
 Delta R.T.: -0.004 min
 Response: 66705615
 Conc: 24.88 ng/ml



#43 AR-1268-3
 R.T.: 0.000 min
 Exp R.T. : 10.124 min
 Response: 0
 Conc: N.D.



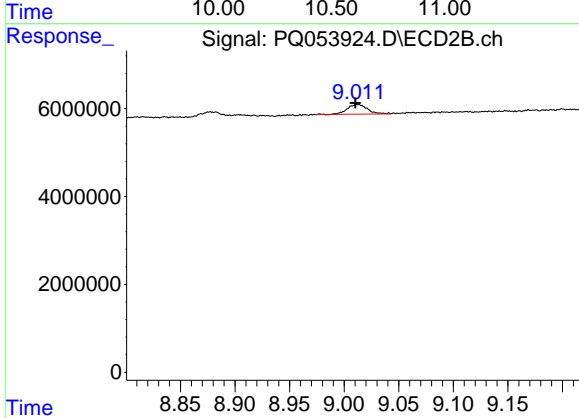
#43 AR-1268-3
 R.T.: 8.718 min
 Delta R.T.: 0.000 min
 Response: 1534043
 Conc: 0.66 ng/ml



#44 AR-1268-4

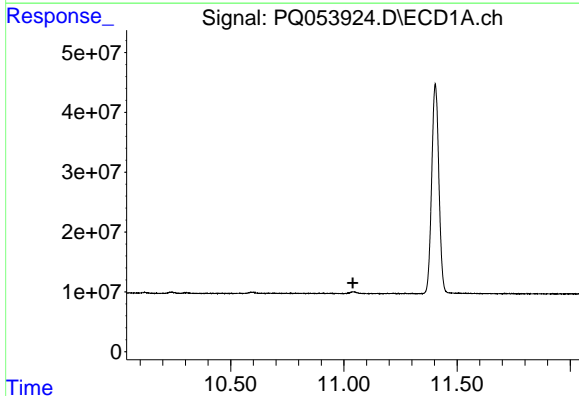
R.T.: 0.000 min
 Exp R.T. : 10.594 min
 Response: 0
 Conc: N.D.

Instrument :
 ECD_Q
 ClientSampled :



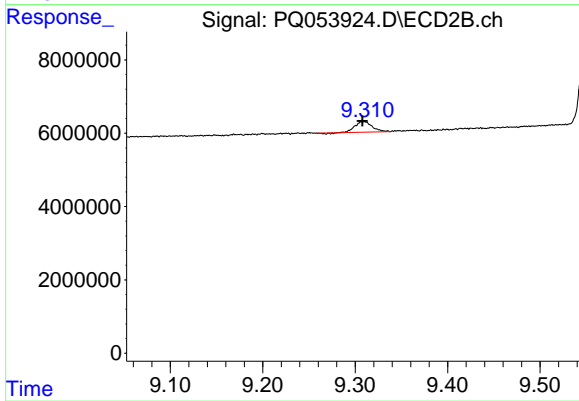
#44 AR-1268-4

R.T.: 9.012 min
 Delta R.T.: 0.002 min
 Response: 2764870
 Conc: 3.23 ng/ml



#45 AR-1268-5

R.T.: 0.000 min
 Exp R.T. : 11.040 min
 Response: 0
 Conc: N.D.



#45 AR-1268-5

R.T.: 9.310 min
 Delta R.T.: 0.002 min
 Response: 3704269
 Conc: 0.60 ng/ml