

Data Path : Z:\pestpcbsrv\HPCHEM1\ECD_Q\Data\PQ061819\
 Data File : PQ040990.D
 Signal(s) : Signal #1: ECD1A.ch Signal #2: ECD2B.ch
 Acq On : 19 Jun 2019 03:16
 Operator : SM\AJ
 Sample : K3360-05
 Misc :
 ALS Vial : 57 Sample Multiplier: 1

Instrument :
 ECD_Q
 ClientSampleId :
 A41Z8

Integration File signal 1: autoint1.e
 Integration File signal 2: autoint2.e
 Quant Time: Jun 19 07:09:46 2019
 Quant Method : Z:\pestpcbsrv\HPCHEM1\ECD_Q\Method\PQ061819CLP.M
 Quant Title : GC EXTRACTABLES
 QLast Update : Wed Jun 19 06:57:02 2019
 Response via : Initial Calibration
 Integrator: ChemStation

Volume Inj. : 1 µl
 Signal #1 Phase : ZB MR1 Signal #2 Phase: ZB MR2
 Signal #1 Info : 30Mx0.32mmx 0.5µm Signal #2 Info : 30M x 0.32mm x 0.25µm

Compound	RT#1	RT#2	Resp#1	Resp#2	ng/ml	ng/ml

System Monitoring Compounds						
1) SA Tetrachlo...	5.738	4.793	21493688	13983515	9.357	8.283
2) SA Decachlor...	12.161	10.565	104.3E6	44926220	12.872	13.493

Target Compounds

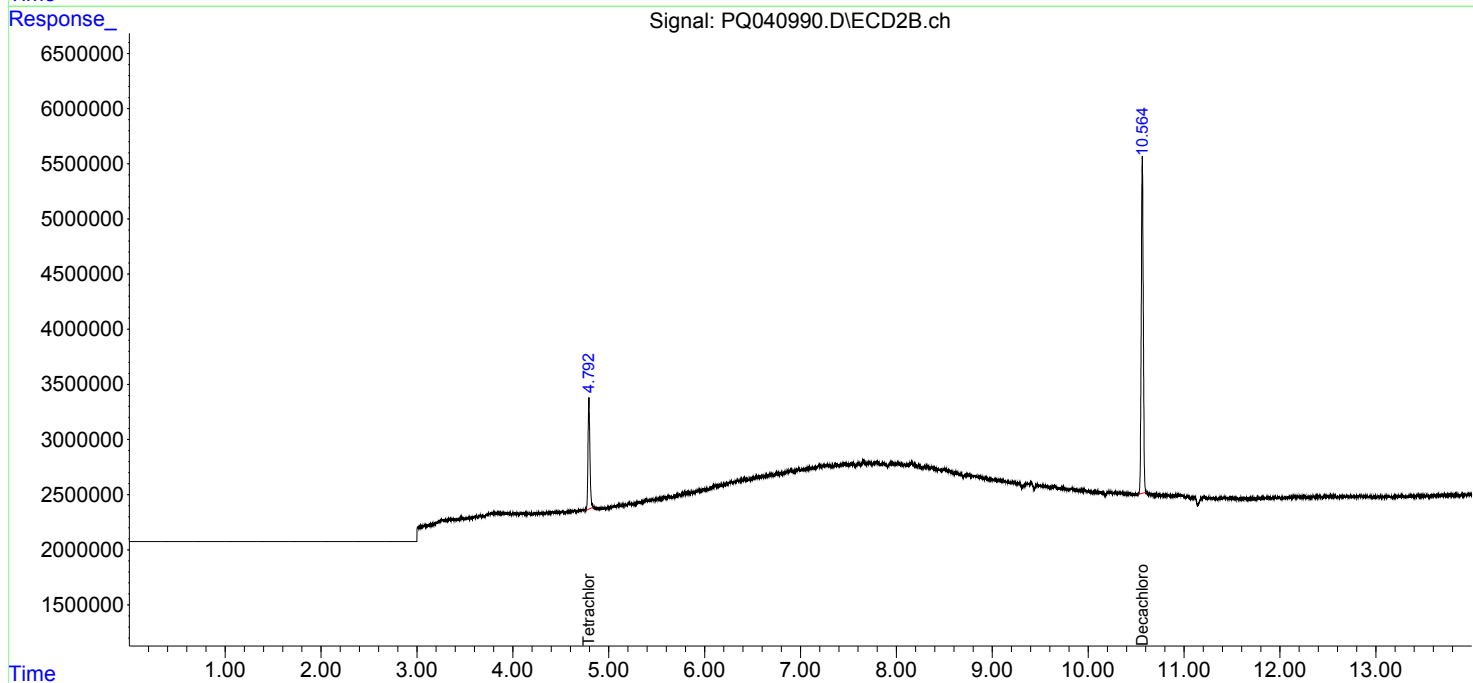
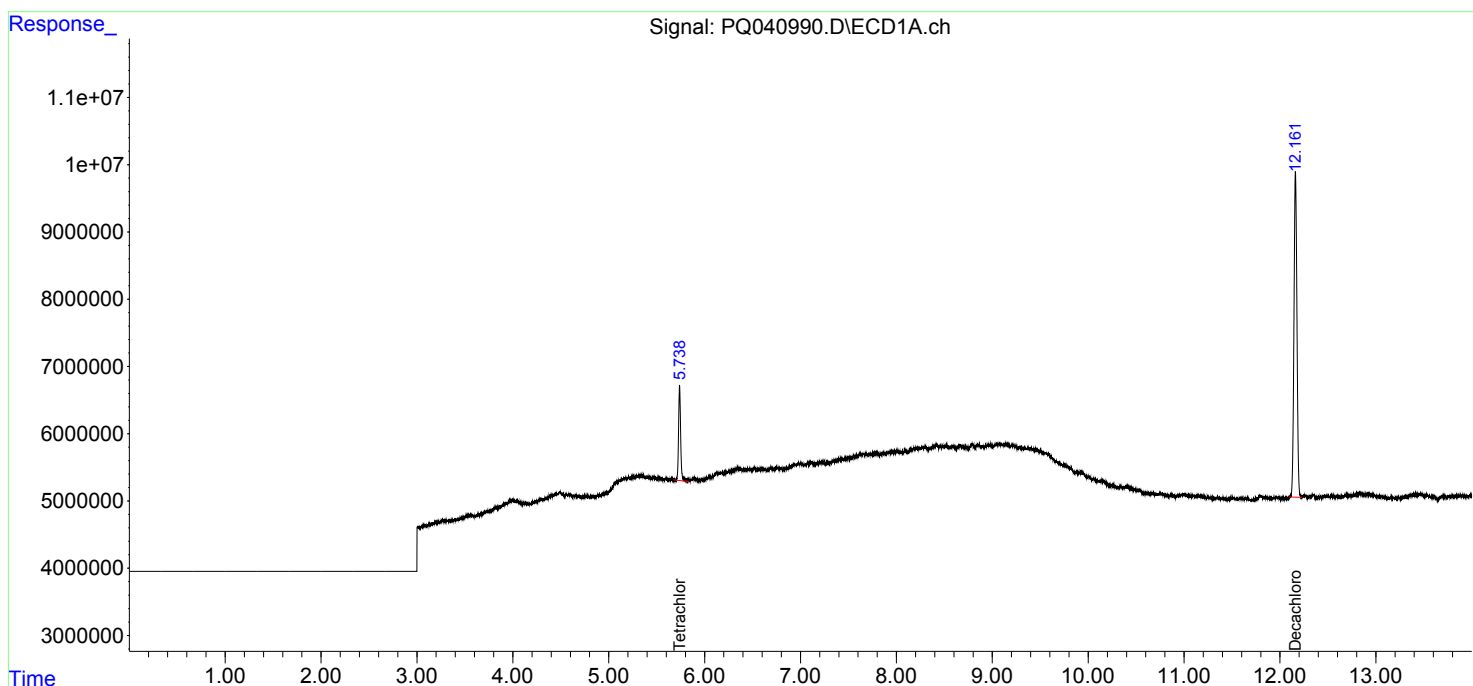
(f)=RT Delta > 1/2 Window (#)=Amounts differ by > 25% (m)=manual int.

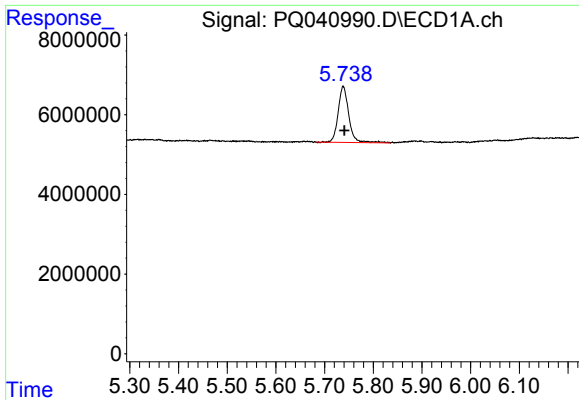
Data Path : Z:\pestpcbsrv\HPCHEM1\ECD_Q\Data\PQ061819\
 Data File : PQ040990.D
 Signal(s) : Signal #1: ECD1A.ch Signal #2: ECD2B.ch
 Acq On : 19 Jun 2019 03:16
 Operator : SM\AJ
 Sample : K3360-05
 Misc :
 ALS Vial : 57 Sample Multiplier: 1

Instrument :
 ECD_Q
 ClientSampleId :
 A41Z8

Integration File signal 1: autoint1.e
 Integration File signal 2: autoint2.e
 Quant Time: Jun 19 07:09:46 2019
 Quant Method : Z:\pestpcbsrv\HPCHEM1\ECD_Q\Method\PQ061819CLP.M
 Quant Title : GC EXTRACTABLES
 QLast Update : Wed Jun 19 06:57:02 2019
 Response via : Initial Calibration
 Integrator: ChemStation

Volume Inj. : 1 µl
 Signal #1 Phase : ZB MR1 Signal #2 Phase: ZB MR2
 Signal #1 Info : 30Mx0.32mmx 0.5µm Signal #2 Info : 30M x 0.32mm x 0.25µm

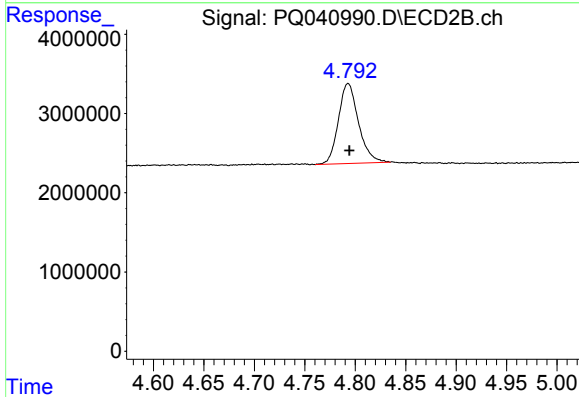




#1 Tetrachloro-m-xylene

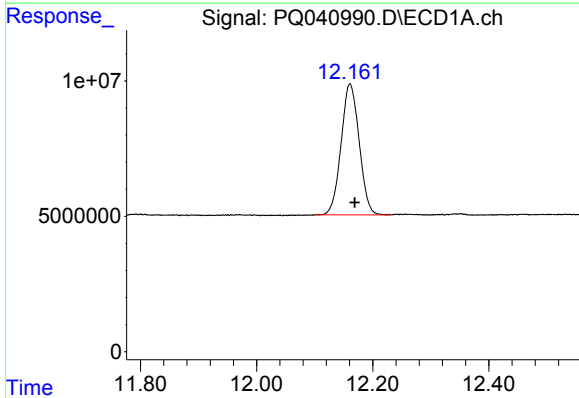
R.T.: 5.738 min
 Delta R.T.: -0.003 min
 Response: 21493688
 Conc: 9.36 ng/ml

Instrument :
 ECD_Q
 ClientSampleId :
 A41Z8



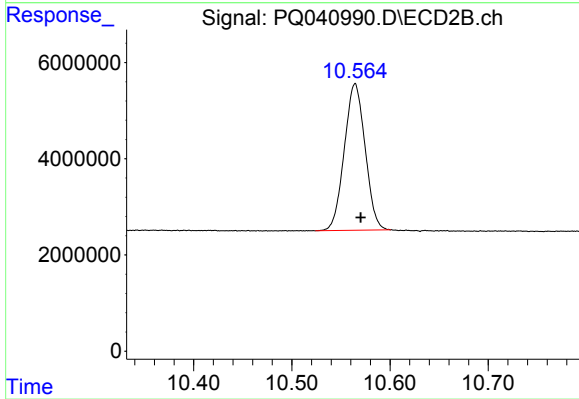
#1 Tetrachloro-m-xylene

R.T.: 4.793 min
 Delta R.T.: -0.001 min
 Response: 13983515
 Conc: 8.28 ng/ml



#2 Decachlorobiphenyl

R.T.: 12.161 min
 Delta R.T.: -0.008 min
 Response: 104332845
 Conc: 12.87 ng/ml



#2 Decachlorobiphenyl

R.T.: 10.565 min
 Delta R.T.: -0.005 min
 Response: 44926220
 Conc: 13.49 ng/ml