

Data Path : Z:\pestpcbsrv\HPCHEM1\ECD_Q\Data\PQ061819\
 Data File : PQ040998.D
 Signal(s) : Signal #1: ECD1A.ch Signal #2: ECD2B.ch
 Acq On : 19 Jun 2019 05:36
 Operator : SM\AJ
 Sample : K3360-16
 Misc :
 ALS Vial : 63 Sample Multiplier: 1

Instrument :
 ECD_Q
 ClientSampleId :
 A41W9

Integration File signal 1: autoint1.e
 Integration File signal 2: autoint2.e
 Quant Time: Jun 19 07:13:34 2019
 Quant Method : Z:\pestpcbsrv\HPCHEM1\ECD_Q\Method\PQ061819CLP.M
 Quant Title : GC EXTRACTABLES
 QLast Update : Wed Jun 19 06:57:02 2019
 Response via : Initial Calibration
 Integrator: ChemStation

Volume Inj. : 1 µl
 Signal #1 Phase : ZB MR1 Signal #2 Phase: ZB MR2
 Signal #1 Info : 30Mx0.32mmx 0.5µm Signal #2 Info : 30M x 0.32mm x 0.25µm

Compound	RT#1	RT#2	Resp#1	Resp#2	ng/ml	ng/ml

System Monitoring Compounds						
1) SA Tetrachlo...	5.738	4.793	33032666	22466209	14.380	13.307
2) SA Decachlor...	12.161	10.564	207.2E6	85994829	25.559	25.828
Target Compounds						
3) L1 AR-1016-1	7.218	0.000	6787292	0	58.847	N.D. #
4) L1 AR-1016-2	7.218	0.000	6787292	0	38.679	N.D. #
5) L1 AR-1016-3	7.218	0.000	6787292	0	62.877	N.D. #
13) L3 AR-1232-3	7.218	0.000	6787292	0	80.656	N.D. #
16) L4 AR-1242-1	7.218	0.000	6787292	0	67.476	N.D. #
17) L4 AR-1242-2	7.218	0.000	6787292	0	42.510	N.D. #
18) L4 AR-1242-3	7.218	0.000	6787292	0	70.610	N.D. #
21) L5 AR-1248-1	7.218	0.000	6787292	0	102.512	N.D. #

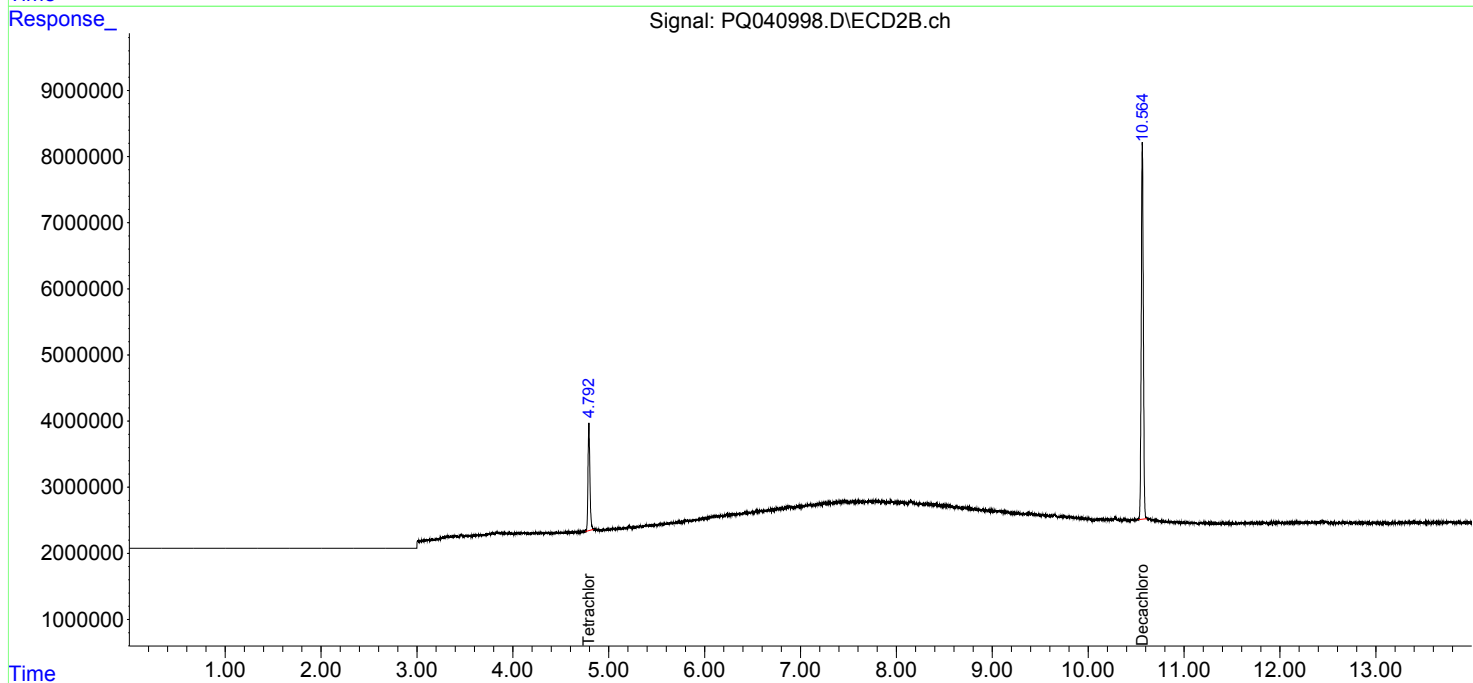
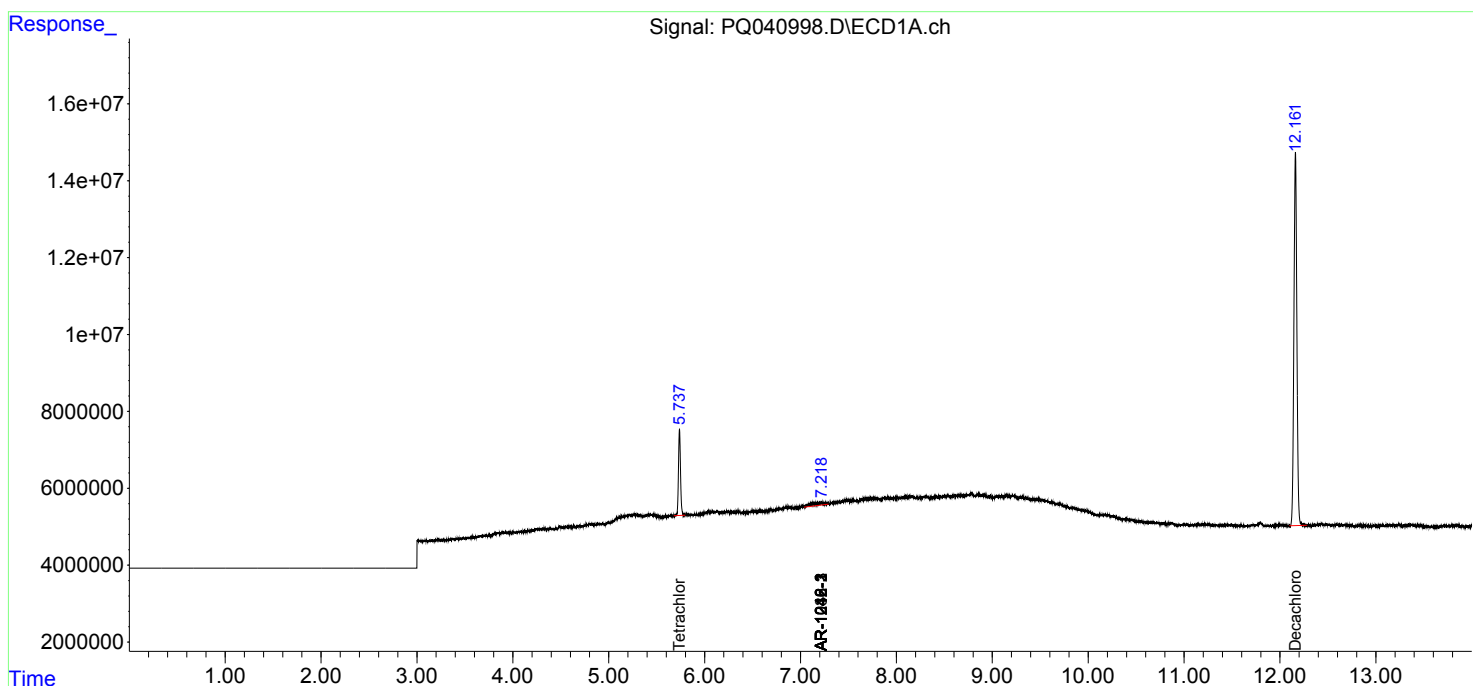
(f)=RT Delta > 1/2 Window (#)=Amounts differ by > 25% (m)=manual int.

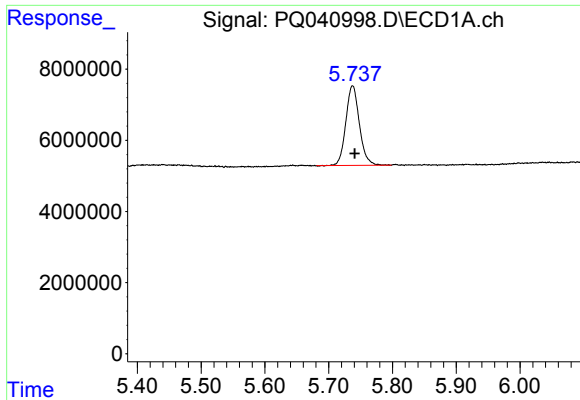
Data Path : Z:\pestpcbsrv\HPCHEM1\ECD_Q\Data\PQ061819\
 Data File : PQ040998.D
 Signal(s) : Signal #1: ECD1A.ch Signal #2: ECD2B.ch
 Acq On : 19 Jun 2019 05:36
 Operator : SM\AJ
 Sample : K3360-16
 Misc :
 ALS Vial : 63 Sample Multiplier: 1

Instrument :
 ECD_Q
 ClientSampled :
 A41W9

Integration File signal 1: autoint1.e
 Integration File signal 2: autoint2.e
 Quant Time: Jun 19 07:13:34 2019
 Quant Method : Z:\pestpcbsrv\HPCHEM1\ECD_Q\Method\PQ061819CLP.M
 Quant Title : GC EXTRACTABLES
 QLast Update : Wed Jun 19 06:57:02 2019
 Response via : Initial Calibration
 Integrator: ChemStation

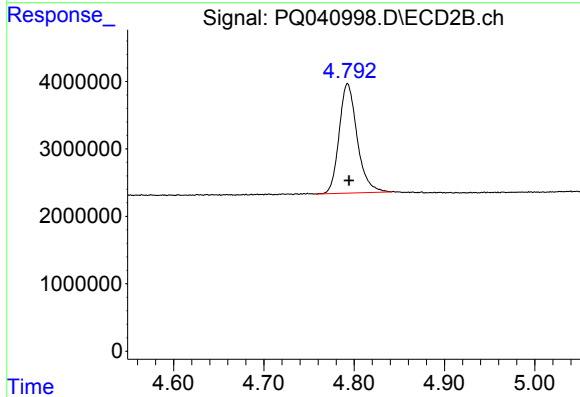
Volume Inj. : 1 µl
 Signal #1 Phase : ZB MR1 Signal #2 Phase: ZB MR2
 Signal #1 Info : 30Mx0.32mmx 0.5µm Signal #2 Info : 30M x 0.32mm x 0.25µm



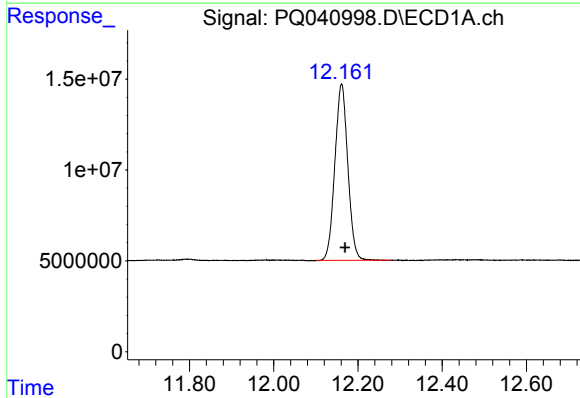


#1 Tetrachloro-m-xylene
 R.T.: 5.738 min
 Delta R.T.: -0.003 min
 Response: 33032666
 Conc: 14.38 ng/ml

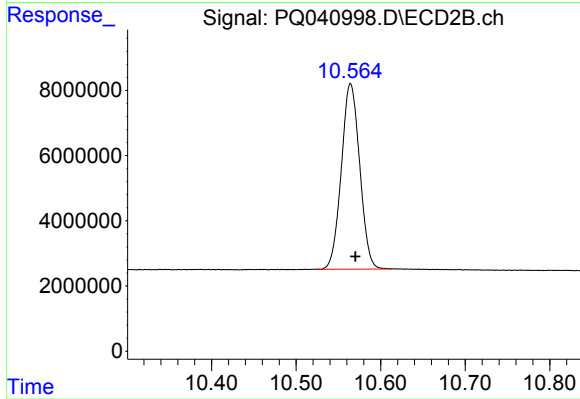
Instrument :
 ECD_Q
 ClientSampleId :
 A41W9



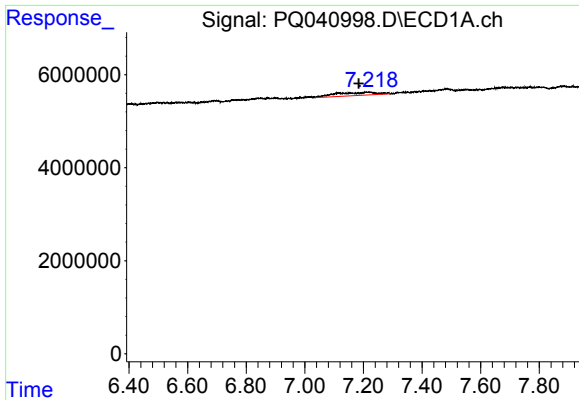
#1 Tetrachloro-m-xylene
 R.T.: 4.793 min
 Delta R.T.: -0.001 min
 Response: 22466209
 Conc: 13.31 ng/ml



#2 Decachlorobiphenyl
 R.T.: 12.161 min
 Delta R.T.: -0.008 min
 Response: 207166773
 Conc: 25.56 ng/ml



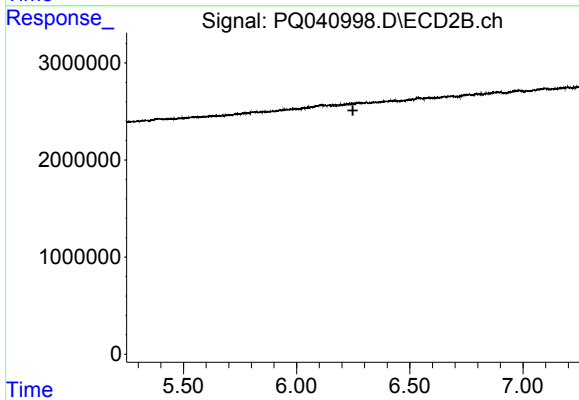
#2 Decachlorobiphenyl
 R.T.: 10.564 min
 Delta R.T.: -0.006 min
 Response: 85994829
 Conc: 25.83 ng/ml



#3 AR-1016-1

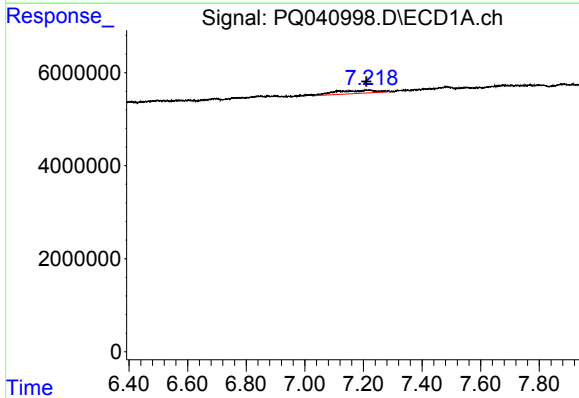
R.T.: 7.218 min
 Delta R.T.: 0.035 min
 Response: 6787292
 Conc: 58.85 ng/ml

Instrument :
 ECD_Q
 ClientSampleId :
 A41W9



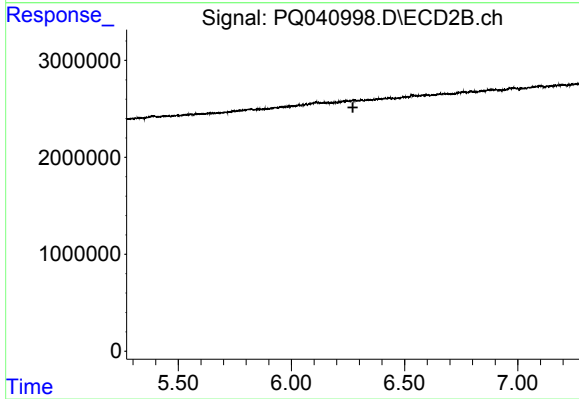
#3 AR-1016-1

R.T.: 0.000 min
 Exp R.T. : 6.248 min
 Response: 0
 Conc: N.D.



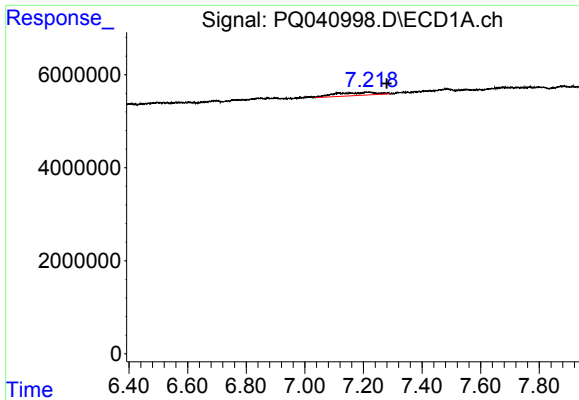
#4 AR-1016-2

R.T.: 7.218 min
 Delta R.T.: 0.009 min
 Response: 6787292
 Conc: 38.68 ng/ml



#4 AR-1016-2

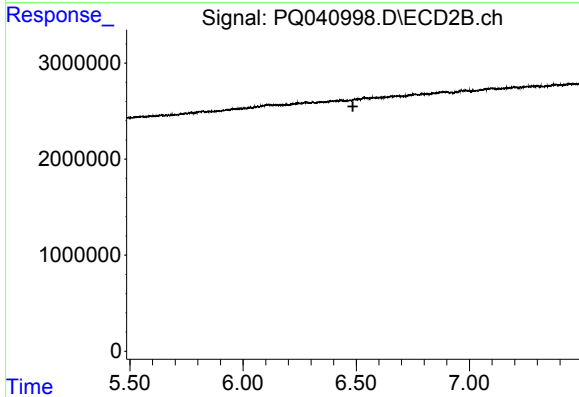
R.T.: 0.000 min
 Exp R.T. : 6.271 min
 Response: 0
 Conc: N.D.



#5 AR-1016-3

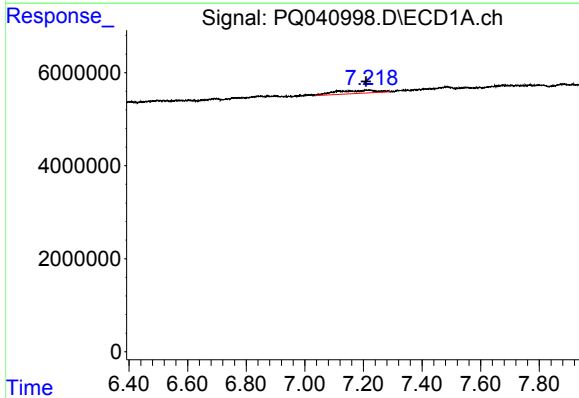
R.T.: 7.218 min
 Delta R.T.: -0.061 min
 Response: 6787292
 Conc: 62.88 ng/ml

Instrument :
 ECD_Q
 ClientSampled :
 A41W9



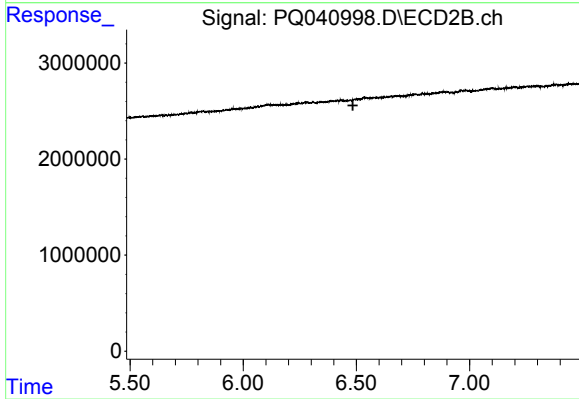
#5 AR-1016-3

R.T.: 0.000 min
 Exp R.T. : 6.485 min
 Response: 0
 Conc: N.D.



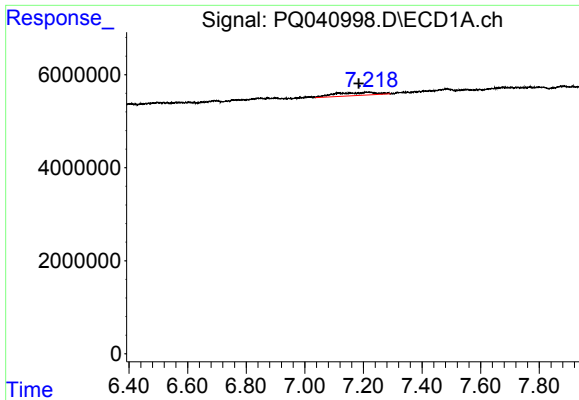
#13 AR-1232-3

R.T.: 7.218 min
 Delta R.T.: 0.010 min
 Response: 6787292
 Conc: 80.66 ng/ml



#13 AR-1232-3

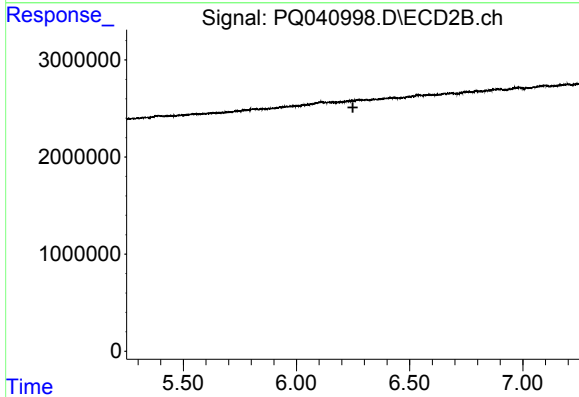
R.T.: 0.000 min
 Exp R.T. : 6.484 min
 Response: 0
 Conc: N.D.



#16 AR-1242-1

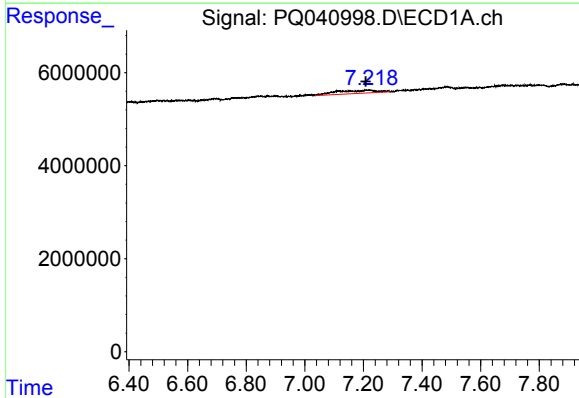
R.T.: 7.218 min
 Delta R.T.: 0.035 min
 Response: 6787292
 Conc: 67.48 ng/ml

Instrument :
 ECD_Q
 ClientSampleId :
 A41W9



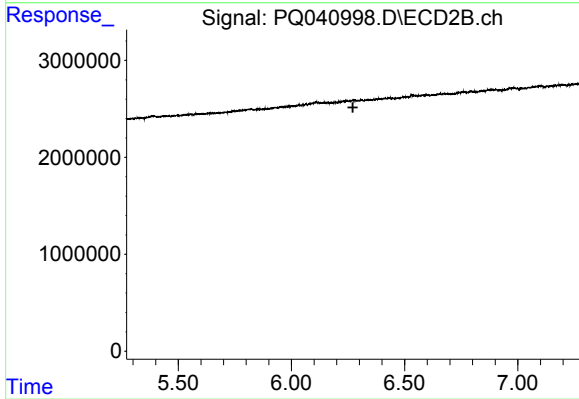
#16 AR-1242-1

R.T.: 0.000 min
 Exp R.T. : 6.249 min
 Response: 0
 Conc: N.D.



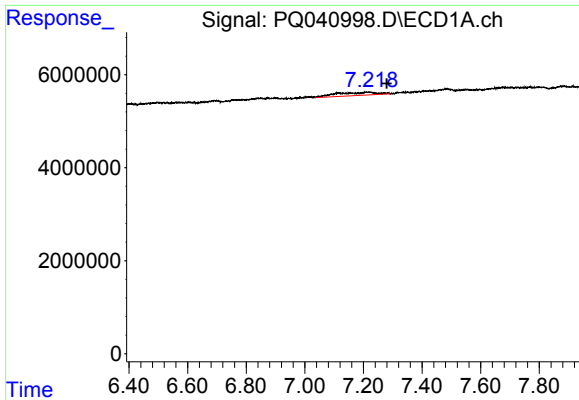
#17 AR-1242-2

R.T.: 7.218 min
 Delta R.T.: 0.010 min
 Response: 6787292
 Conc: 42.51 ng/ml



#17 AR-1242-2

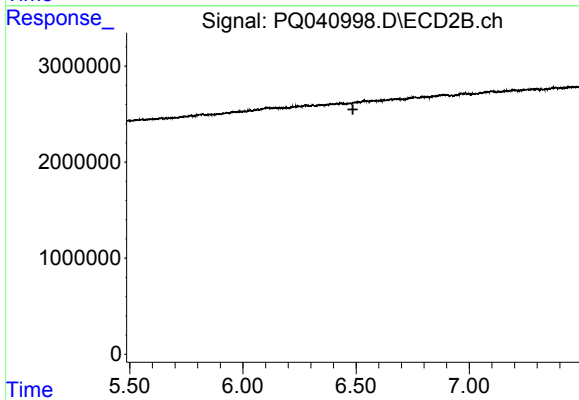
R.T.: 0.000 min
 Exp R.T. : 6.271 min
 Response: 0
 Conc: N.D.



#18 AR-1242-3

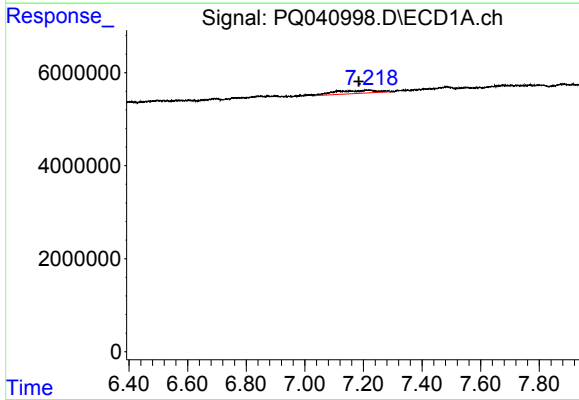
R.T.: 7.218 min
 Delta R.T.: -0.061 min
 Response: 6787292
 Conc: 70.61 ng/ml

Instrument :
 ECD_Q
 ClientSampleId :
 A41W9



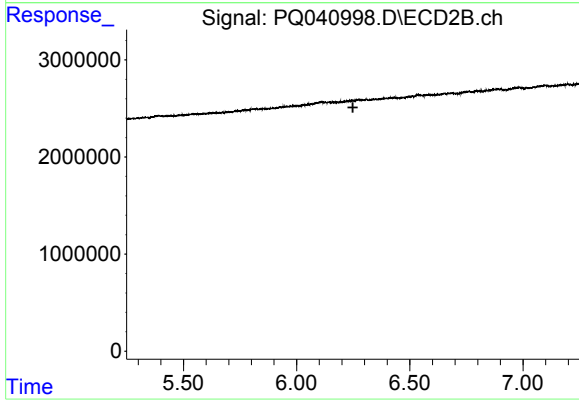
#18 AR-1242-3

R.T.: 0.000 min
 Exp R.T. : 6.486 min
 Response: 0
 Conc: N.D.



#21 AR-1248-1

R.T.: 7.218 min
 Delta R.T.: 0.035 min
 Response: 6787292
 Conc: 102.51 ng/ml



#21 AR-1248-1

R.T.: 0.000 min
 Exp R.T. : 6.248 min
 Response: 0
 Conc: N.D.