

Data Path : Z:\pestpcbsrv\HPCHEM1\ECD_Q\Data\PQ061825\
 Data File : PQ070374.D
 Signal(s) : Signal #1: ECD1A.ch Signal #2: ECD2B.ch
 Acq On : 18 Jun 2025 10:55
 Operator : YP\AJ
 Sample : HEXANE
 Misc :
 ALS Vial : 1 Sample Multiplier: 1

Instrument :
 ECD_Q
 ClientSampleId :
 HEXANE

Integration File signal 1: autoint1.e
 Integration File signal 2: autoint2.e
 Quant Time: Jun 19 10:26:43 2025
 Quant Method : Z:\pestpcbsrv\HPCHEM1\ECD_Q\Method\PQ060925CLP.M
 Quant Title : GC EXTRACTABLES
 QLast Update : Tue Jun 10 13:26:03 2025
 Response via : Initial Calibration
 Integrator: ChemStation

Volume Inj. : 1 µl
 Signal #1 Phase : ZB MR2 Signal #2 Phase: ZB MR2
 Signal #1 Info : 30Mx0.32mmx 0.5µm Signal #2 Info : 30M x 0.32mm x 0.25µm

Compound	RT#1	RT#2	Resp#1	Resp#2	ng/ml	ng/ml	
System Monitoring Compounds							
1) SA Tetrachlo...	3.424	0.000	205891	0	0.031	N.D.	#
2) SA Decachlor...	8.503	0.000	75190	0	0.026	N.D.	#
Target Compounds							
3) L1 AR-1016-1	4.489	0.000	412938	0	2.733	N.D.	#
4) L1 AR-1016-2	4.489	0.000	412938	0	1.518	N.D.	#
5) L1 AR-1016-3	4.581	0.000	475325	0	2.599	N.D.	#
6) L1 AR-1016-4	4.662	0.000	142420	0	1.015	N.D.	#
7) L1 AR-1016-5	4.931	4.196	682034	4701651	4.814	25.831	#
9) L2 AR-1221-2	3.686	0.000	126902	0	2.510	N.D.	#
10) L2 AR-1221-3	3.736	0.000	185430	0	1.129	N.D.	#
11) L3 AR-1232-1	3.736	0.000	185430	0	1.399	N.D.	#
12) L3 AR-1232-2	4.258	0.000	60493	0	0.803	N.D.	#
13) L3 AR-1232-3	4.489	0.000	412938	0	3.267	N.D.	#
14) L3 AR-1232-4	4.662	4.097f	142420	6905580	2.225	103.063	#
15) L3 AR-1232-5	4.708f	4.196	238198	4701651	5.195	62.472	#
16) L4 AR-1242-1	4.489	0.000	412938	0	3.062	N.D.	#
17) L4 AR-1242-2	4.489	0.000	412938	0	1.753	N.D.	#
18) L4 AR-1242-3	4.581	0.000	475325	0	3.040	N.D.	#
19) L4 AR-1242-4	4.662	4.097f	142420	6905580	1.156	48.730	#
20) L4 AR-1242-5	5.335	4.560	10292168	14917279	94.212	97.328	#
21) L5 AR-1248-1	4.489	0.000	412938	0	3.920	N.D.	#
22) L5 AR-1248-2	4.708f	0.000	238198	0	1.425	N.D.	#
23) L5 AR-1248-3	4.931	4.097f	682034	6905580	3.429	34.588	#
24) L5 AR-1248-4	5.326	4.196	6276735	4701651	35.113	19.102	#
25) L5 AR-1248-5	5.335	4.560	10292168	14917279	54.076	74.493	#
26) L6 AR-1254-1	5.297	4.560	17375538	14917279	75.336	40.490	#
27) L6 AR-1254-2	5.550f	0.000	355817	0	1.047	N.D.	#
28) L6 AR-1254-3	5.831	5.071	7378489	5502008	104.996	10.949	#
29) L6 AR-1254-4	6.135	5.338f	2717191	2504170	13.200	10.667	#
30) L6 AR-1254-5	6.561	0.000	1813958	0	7.041	N.D.	#
31) L7 AR-1260-1	6.030	5.139f	3972296	1870830	15.270	5.555	#
32) L7 AR-1260-2	6.279	5.338f	4289906	2504170	16.331	6.787	#
33) L7 AR-1260-3	6.645	0.000	2515882	0	10.839	N.D.	#
34) L7 AR-1260-4	6.842	0.000	1629181	0	6.500	N.D.	#
35) L7 AR-1260-5	7.166	0.000	961458	0	2.375	N.D.	#
36) L8 AR-1262-1	6.842	0.000	1629181	0	5.140	N.D.	#
37) L8 AR-1262-2	7.166	0.000	961458	0	2.015	N.D.	#
38) L8 AR-1262-3	7.431	6.446f	345037	218490	1.045	0.638	#
39) L8 AR-1262-4	7.564f	0.000	227030	0	0.809	N.D.	#
40) L8 AR-1262-5	7.996	0.000	77169	0	0.511	N.D.	#
41) L9 AR-1268-1	7.431	6.446f	345037	218490	0.545	0.226	#
42) L9 AR-1268-2	7.564f	0.000	227030	0	0.386	N.D.	#

Data Path : Z:\pestpcbsrv\HPCHEM1\ECD_Q\Data\PQ061825\
 Data File : PQ070374.D
 Signal(s) : Signal #1: ECD1A.ch Signal #2: ECD2B.ch
 Acq On : 18 Jun 2025 10:55
 Operator : YP\AJ
 Sample : HEXANE
 Misc :
 ALS Vial : 1 Sample Multiplier: 1

Instrument :
 ECD_Q
ClientSampleId :
 HEXANE

Integration File signal 1: autoint1.e
 Integration File signal 2: autoint2.e
 Quant Time: Jun 19 10:26:43 2025
 Quant Method : Z:\pestpcbsrv\HPCHEM1\ECD_Q\Method\PQ060925CLP.M
 Quant Title : GC EXTRACTABLES
 QLast Update : Tue Jun 10 13:26:03 2025
 Response via : Initial Calibration
 Integrator: ChemStation

Volume Inj. : 1 µl
 Signal #1 Phase : ZB MR1 Signal #2 Phase: ZB MR2
 Signal #1 Info : 30Mx0.32mmx 0.5µm Signal #2 Info : 30M x 0.32mm x 0.25µm

	Compound	RT#1	RT#2	Resp#1	Resp#2	ng/ml	ng/ml
44)	L9 AR-1268-4	7.996	0.000	77169	0	0.467	N.D. #
45)	L9 AR-1268-5	8.271	0.000	49112	0	0.036	N.D. #

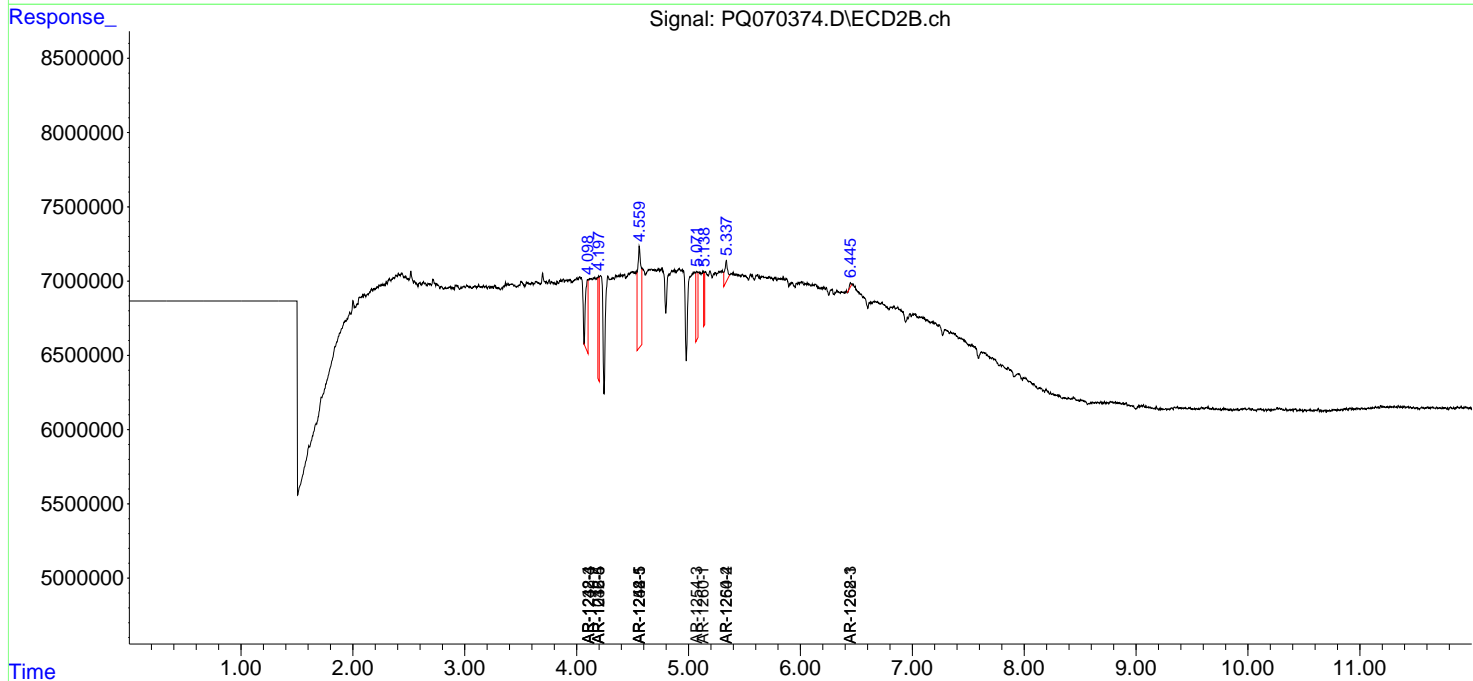
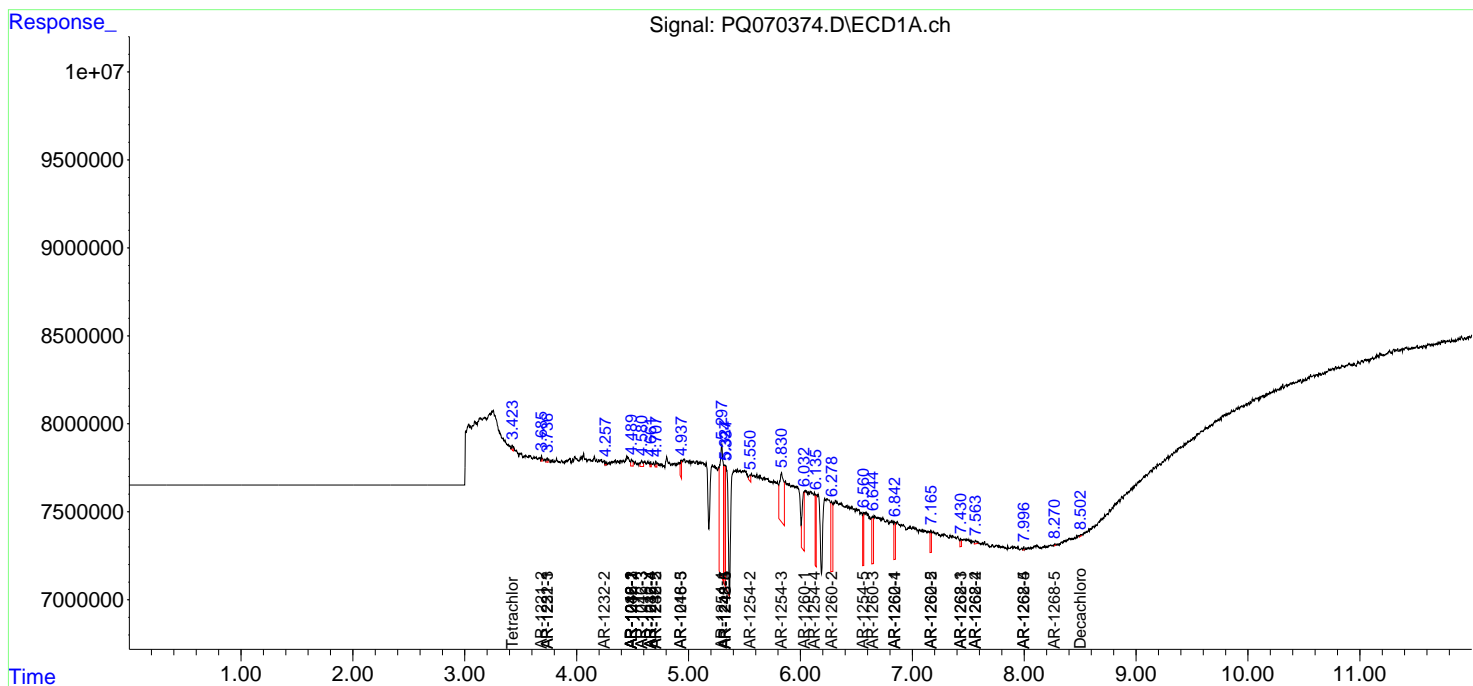
(f)=RT Delta > 1/2 Window (#)=Amounts differ by > 25% (m)=manual int.

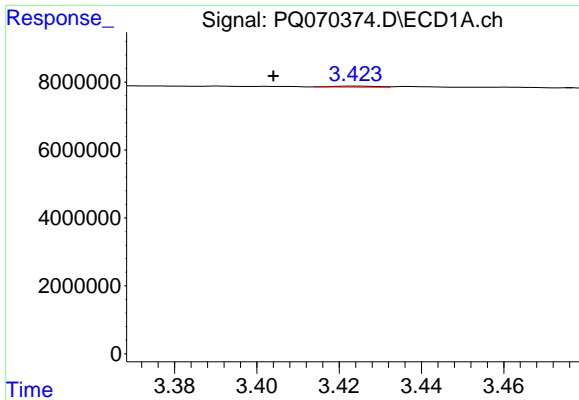
Data Path : Z:\pestpcbsrv\HPCHEM1\ECD_Q\Data\PQ061825\
 Data File : PQ070374.D
 Signal(s) : Signal #1: ECD1A.ch Signal #2: ECD2B.ch
 Acq On : 18 Jun 2025 10:55
 Operator : YP\AJ
 Sample : HEXANE
 Misc :
 ALS Vial : 1 Sample Multiplier: 1

Instrument :
 ECD_Q
 ClientSampleId :
 HEXANE

Integration File signal 1: autoint1.e
 Integration File signal 2: autoint2.e
 Quant Time: Jun 19 10:26:43 2025
 Quant Method : Z:\pestpcbsrv\HPCHEM1\ECD_Q\Method\PQ060925CLP.M
 Quant Title : GC EXTRACTABLES
 QLast Update : Tue Jun 10 13:26:03 2025
 Response via : Initial Calibration
 Integrator: ChemStation

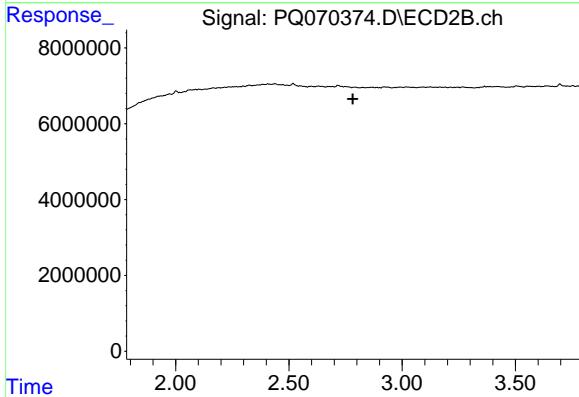
Volume Inj. : 1 µl
 Signal #1 Phase : ZB MR1 Signal #2 Phase: ZB MR2
 Signal #1 Info : 30Mx0.32mmx 0.5µm Signal #2 Info : 30M x 0.32mm x 0.25µm



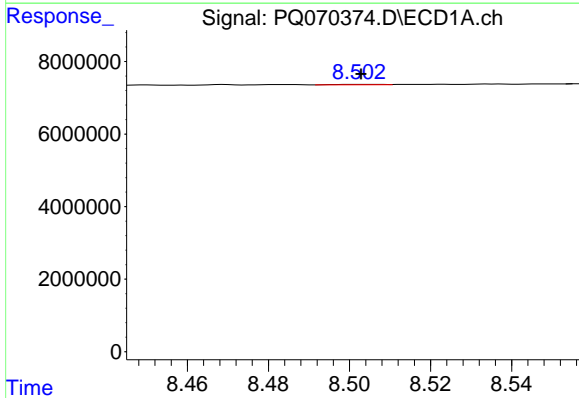


#1 Tetrachloro-m-xylene
 R.T.: 3.424 min
 Delta R.T.: 0.020 min
 Response: 205891
 Conc: 0.03 ng/ml

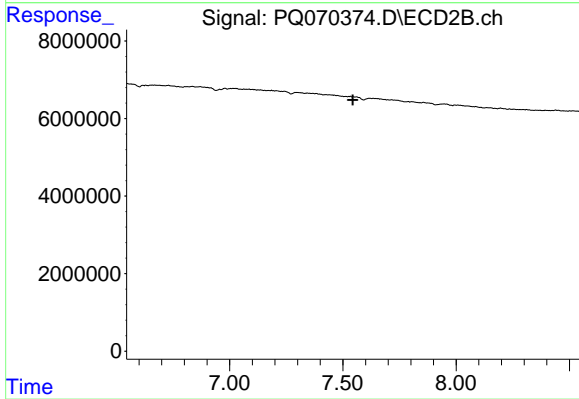
Instrument :
 ECD_Q
 ClientSampleId :
 HEXANE



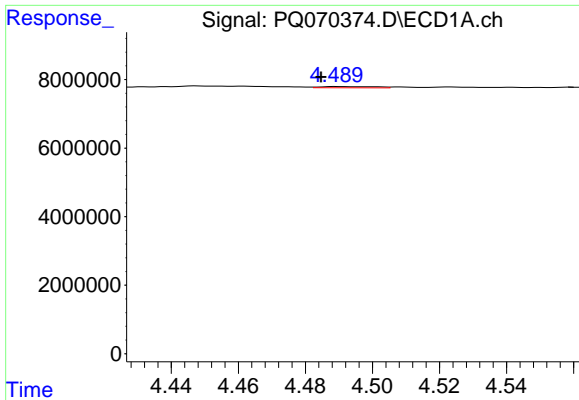
#1 Tetrachloro-m-xylene
 R.T.: 0.000 min
 Exp R.T. : 2.782 min
 Response: 0
 Conc: N.D.



#2 Decachlorobiphenyl
 R.T.: 8.503 min
 Delta R.T.: 0.000 min
 Response: 75190
 Conc: 0.03 ng/ml



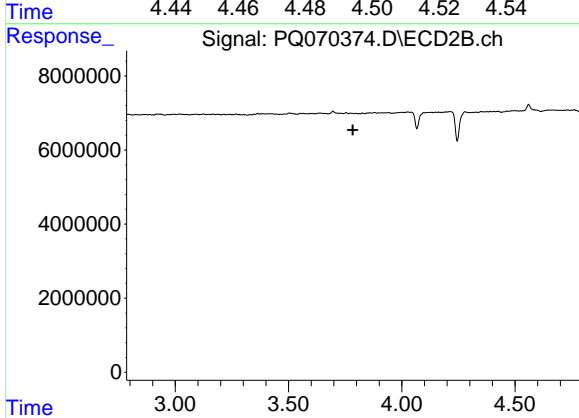
#2 Decachlorobiphenyl
 R.T.: 0.000 min
 Exp R.T. : 7.544 min
 Response: 0
 Conc: N.D.



#3 AR-1016-1

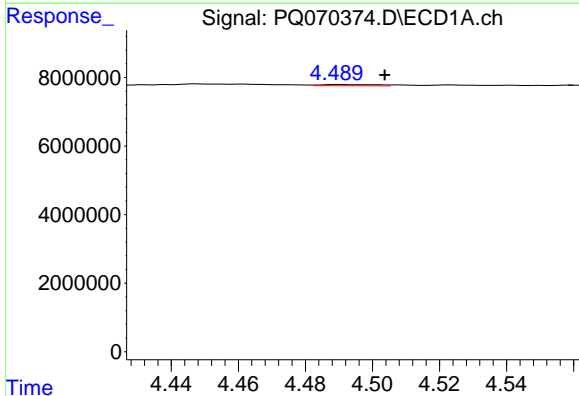
R.T.: 4.489 min
 Delta R.T.: 0.005 min
 Response: 412938
 Conc: 2.73 ng/ml

Instrument :
 ECD_Q
 ClientSampleId :
 HEXANE



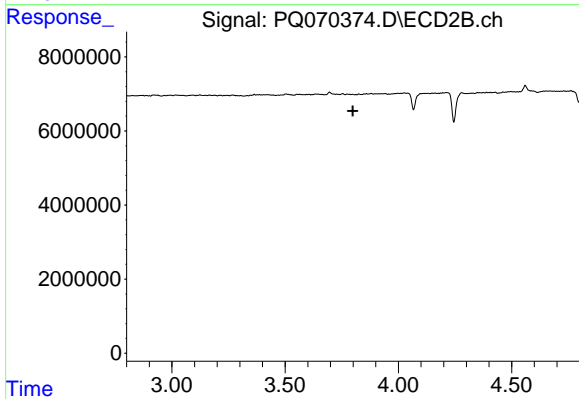
#3 AR-1016-1

R.T.: 0.000 min
 Exp R.T. : 3.784 min
 Response: 0
 Conc: N.D.



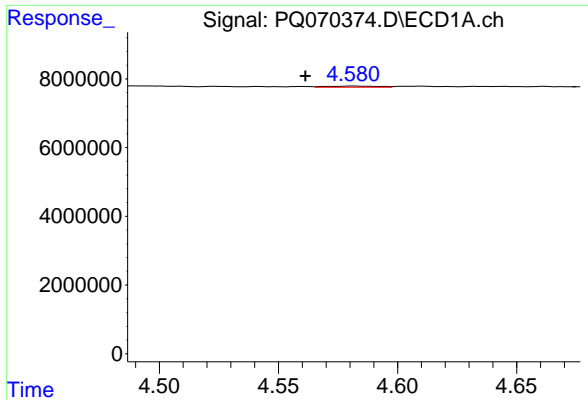
#4 AR-1016-2

R.T.: 4.489 min
 Delta R.T.: -0.014 min
 Response: 412938
 Conc: 1.52 ng/ml



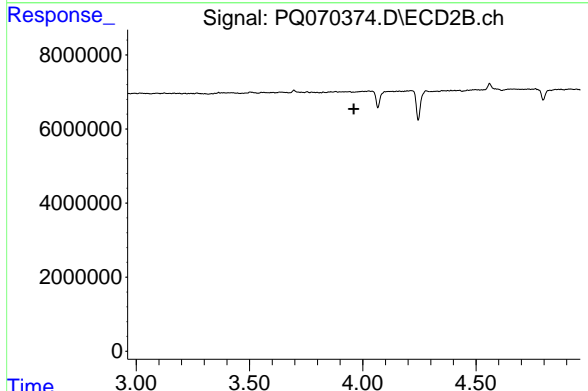
#4 AR-1016-2

R.T.: 0.000 min
 Exp R.T. : 3.799 min
 Response: 0
 Conc: N.D.

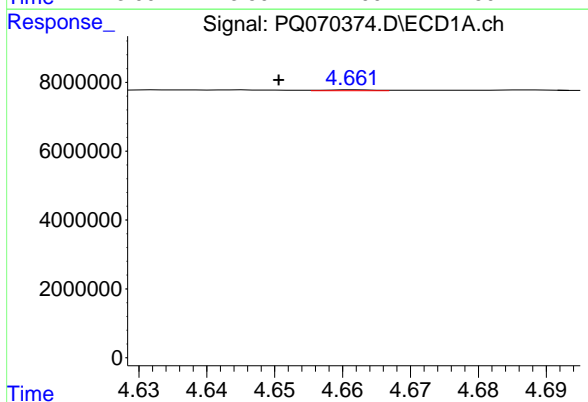


#5 AR-1016-3
 R.T.: 4.581 min
 Delta R.T.: 0.019 min
 Response: 475325
 Conc: 2.60 ng/ml

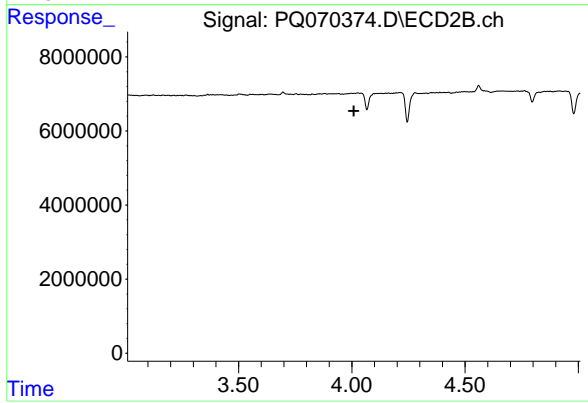
Instrument : ECD_Q
 ClientSampleId : HEXANE



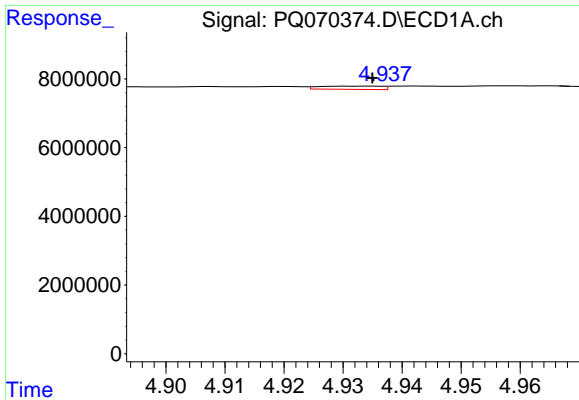
#5 AR-1016-3
 R.T.: 0.000 min
 Exp R.T. : 3.960 min
 Response: 0
 Conc: N.D.



#6 AR-1016-4
 R.T.: 4.662 min
 Delta R.T.: 0.011 min
 Response: 142420
 Conc: 1.02 ng/ml



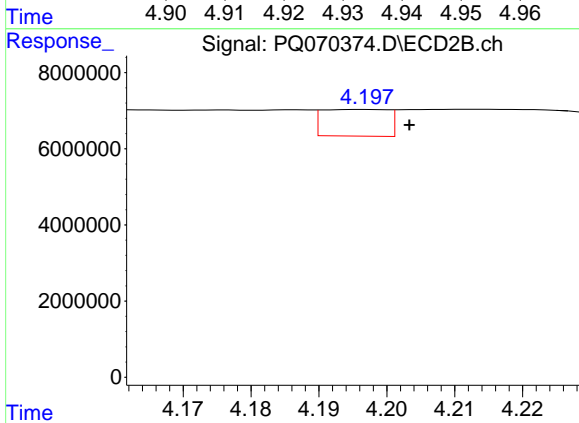
#6 AR-1016-4
 R.T.: 0.000 min
 Exp R.T. : 4.009 min
 Response: 0
 Conc: N.D.



#7 AR-1016-5

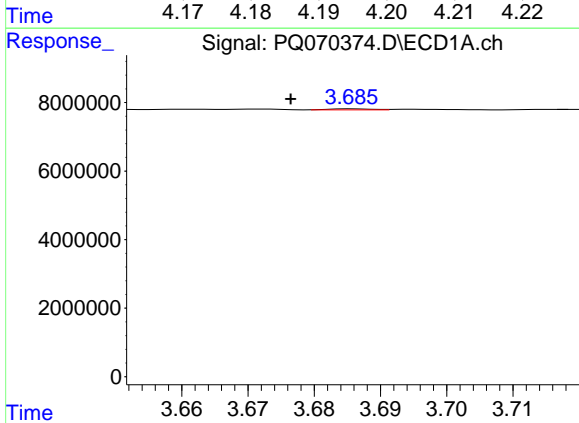
R.T.: 4.931 min
 Delta R.T.: -0.004 min
 Response: 682034
 Conc: 4.81 ng/ml

Instrument :
 ECD_Q
 ClientSampleId :
 HEXANE



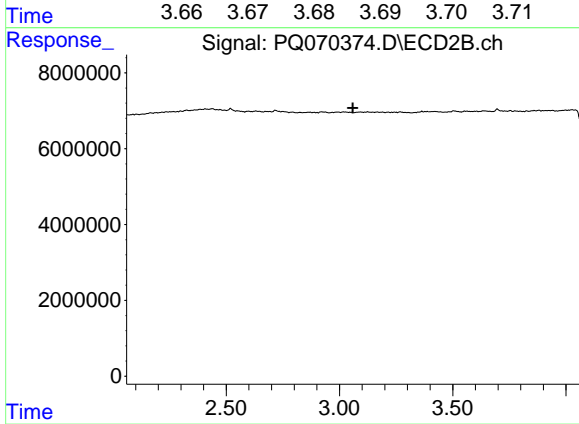
#7 AR-1016-5

R.T.: 4.196 min
 Delta R.T.: -0.007 min
 Response: 4701651
 Conc: 25.83 ng/ml



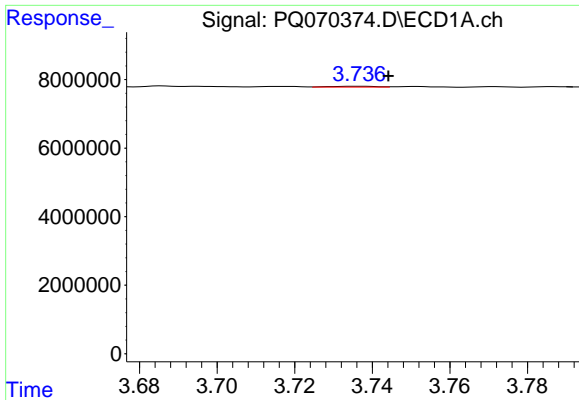
#9 AR-1221-2

R.T.: 3.686 min
 Delta R.T.: 0.009 min
 Response: 126902
 Conc: 2.51 ng/ml



#9 AR-1221-2

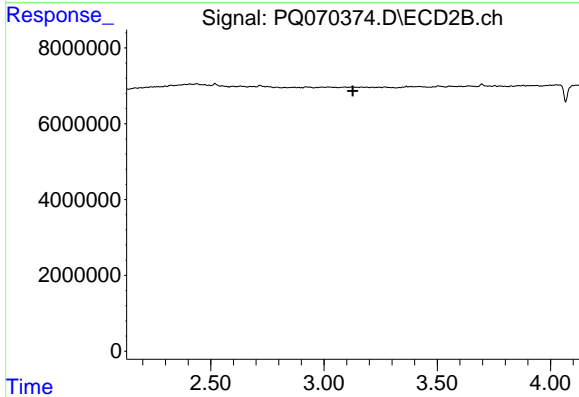
R.T.: 0.000 min
 Exp R.T. : 3.059 min
 Response: 0
 Conc: N.D.



#10 AR-1221-3

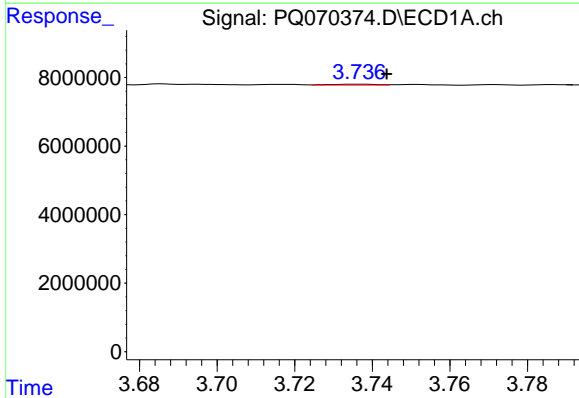
R.T.: 3.736 min
 Delta R.T.: -0.008 min
 Response: 185430
 Conc: 1.13 ng/ml

Instrument :
 ECD_Q
 ClientSampleId :
 HEXANE



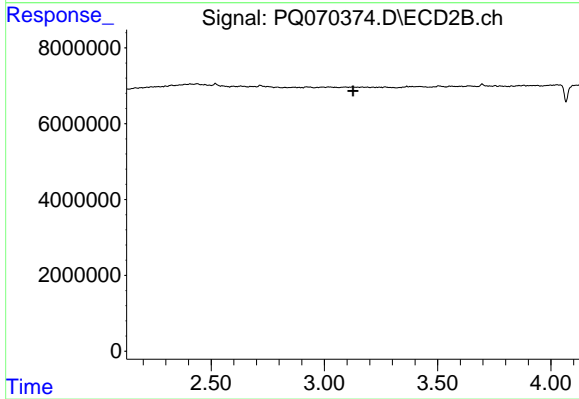
#10 AR-1221-3

R.T.: 0.000 min
 Exp R.T. : 3.127 min
 Response: 0
 Conc: N.D.



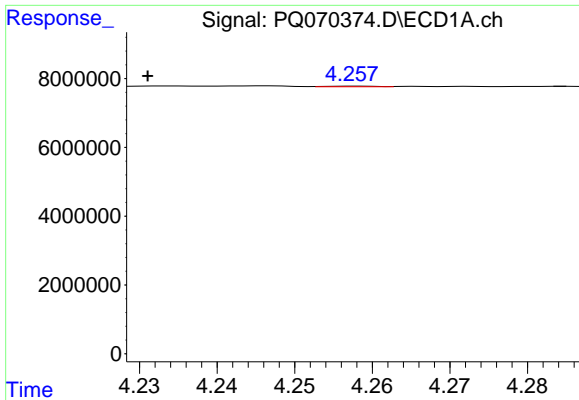
#11 AR-1232-1

R.T.: 3.736 min
 Delta R.T.: -0.007 min
 Response: 185430
 Conc: 1.40 ng/ml



#11 AR-1232-1

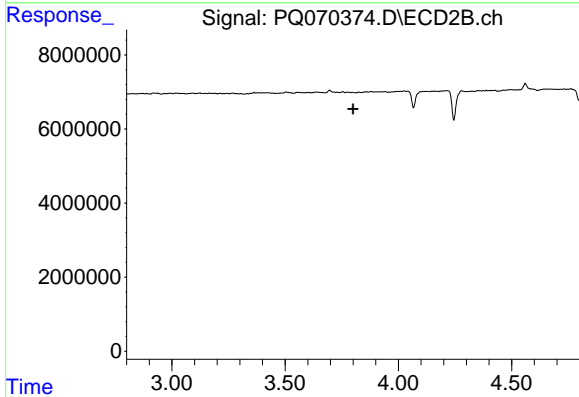
R.T.: 0.000 min
 Exp R.T. : 3.127 min
 Response: 0
 Conc: N.D.



#12 AR-1232-2

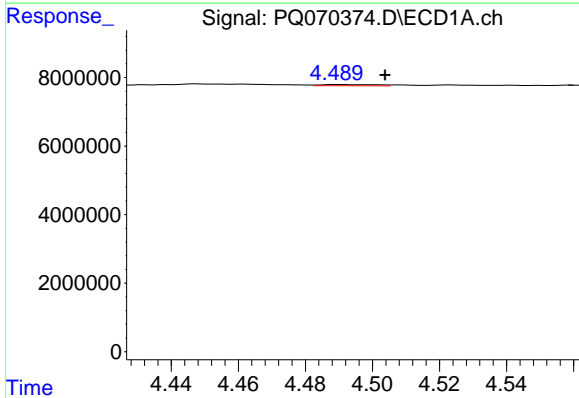
R.T.: 4.258 min
 Delta R.T.: 0.027 min
 Response: 60493
 Conc: 0.80 ng/ml

Instrument :
 ECD_Q
 ClientSampleId :
 HEXANE



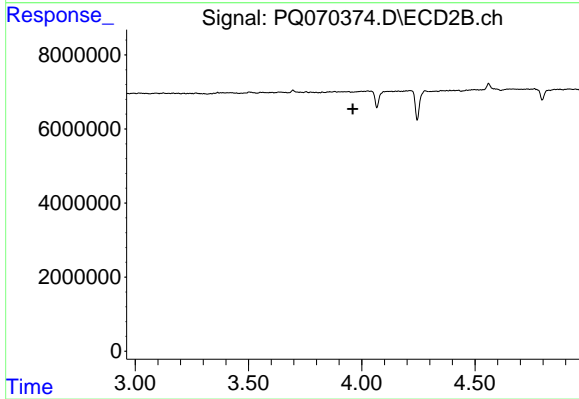
#12 AR-1232-2

R.T.: 0.000 min
 Exp R.T. : 3.800 min
 Response: 0
 Conc: N.D.



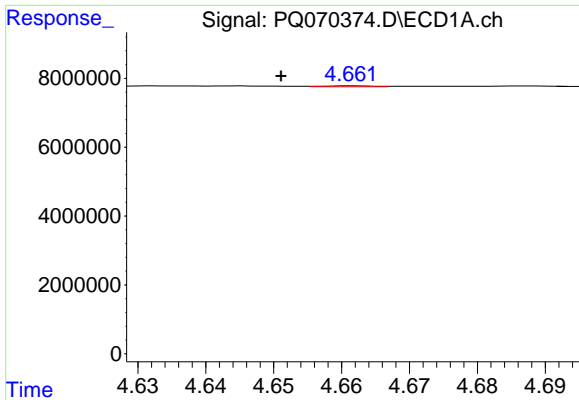
#13 AR-1232-3

R.T.: 4.489 min
 Delta R.T.: -0.014 min
 Response: 412938
 Conc: 3.27 ng/ml



#13 AR-1232-3

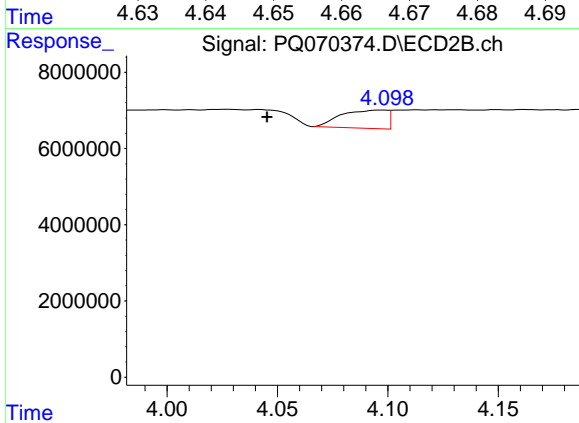
R.T.: 0.000 min
 Exp R.T. : 3.960 min
 Response: 0
 Conc: N.D.



#14 AR-1232-4

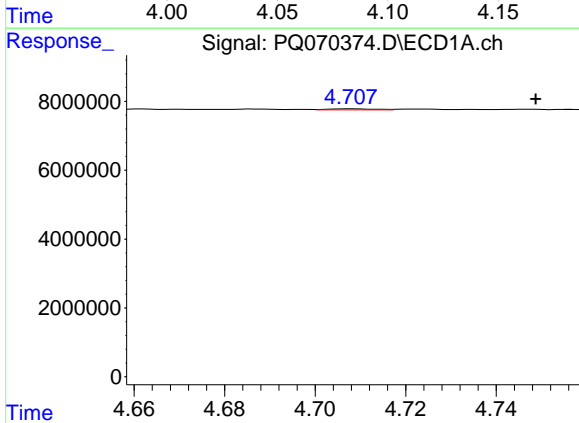
R.T.: 4.662 min
 Delta R.T.: 0.011 min
 Response: 142420
 Conc: 2.23 ng/ml

Instrument :
 ECD_Q
 ClientSampleId :
 HEXANE



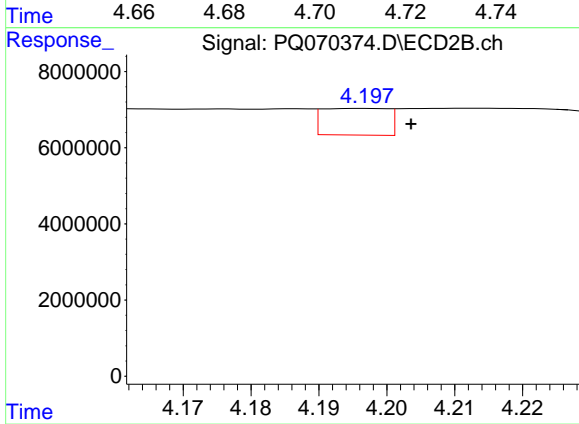
#14 AR-1232-4

R.T.: 4.097 min
 Delta R.T.: 0.052 min
 Response: 6905580
 Conc: 103.06 ng/ml



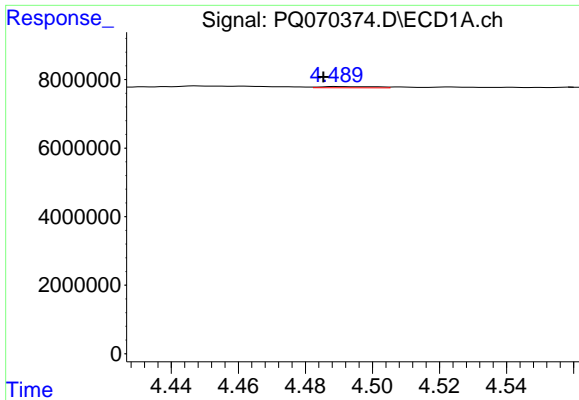
#15 AR-1232-5

R.T.: 4.708 min
 Delta R.T.: -0.041 min
 Response: 238198
 Conc: 5.20 ng/ml



#15 AR-1232-5

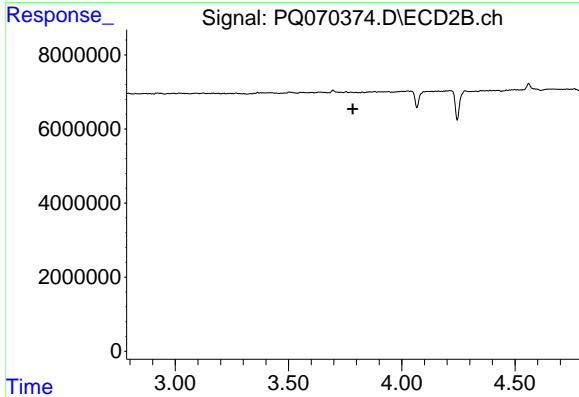
R.T.: 4.196 min
 Delta R.T.: -0.007 min
 Response: 4701651
 Conc: 62.47 ng/ml



#16 AR-1242-1

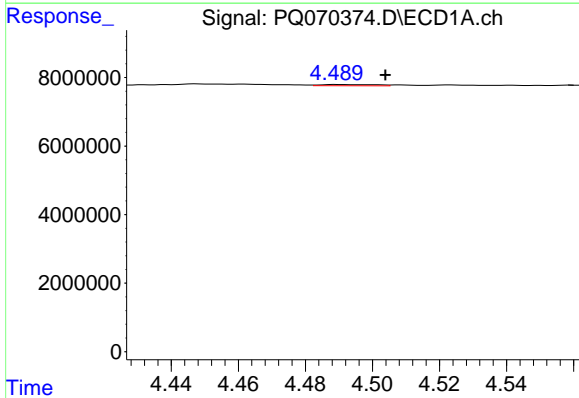
R.T.: 4.489 min
 Delta R.T.: 0.004 min
 Response: 412938
 Conc: 3.06 ng/ml

Instrument :
 ECD_Q
 ClientSampleId :
 HEXANE



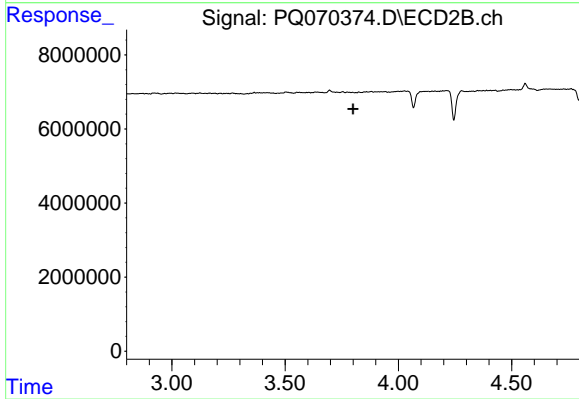
#16 AR-1242-1

R.T.: 0.000 min
 Exp R.T. : 3.784 min
 Response: 0
 Conc: N.D.



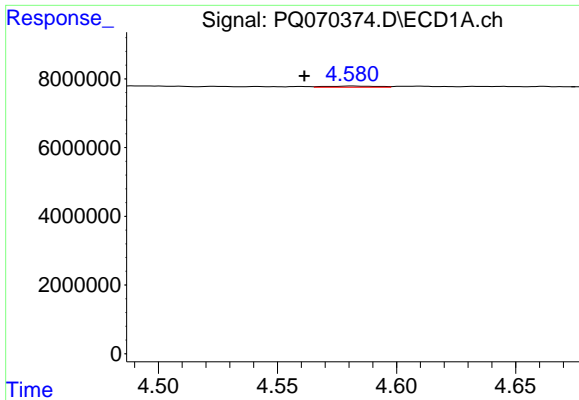
#17 AR-1242-2

R.T.: 4.489 min
 Delta R.T.: -0.015 min
 Response: 412938
 Conc: 1.75 ng/ml



#17 AR-1242-2

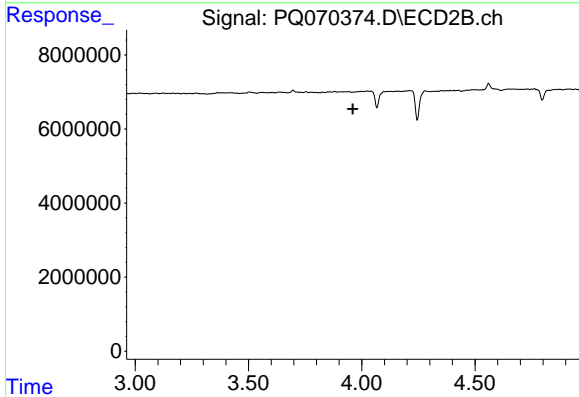
R.T.: 0.000 min
 Exp R.T. : 3.800 min
 Response: 0
 Conc: N.D.



#18 AR-1242-3

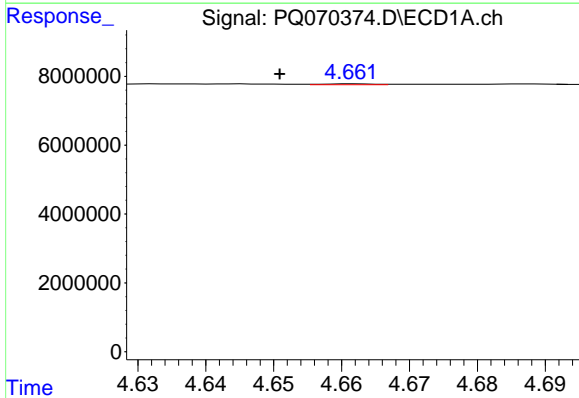
R.T.: 4.581 min
 Delta R.T.: 0.020 min
 Response: 475325
 Conc: 3.04 ng/ml

Instrument : ECD_Q
 ClientSampleId : HEXANE



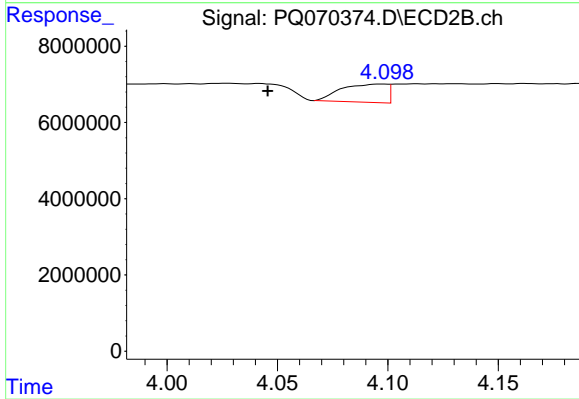
#18 AR-1242-3

R.T.: 0.000 min
 Exp R.T. : 3.960 min
 Response: 0
 Conc: N.D.



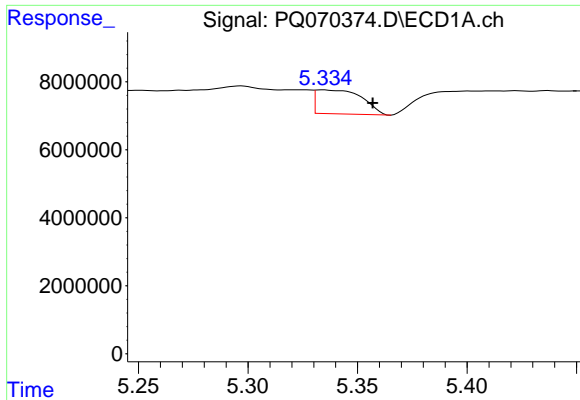
#19 AR-1242-4

R.T.: 4.662 min
 Delta R.T.: 0.011 min
 Response: 142420
 Conc: 1.16 ng/ml



#19 AR-1242-4

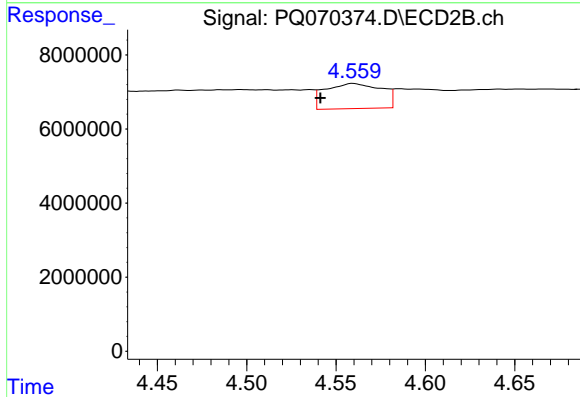
R.T.: 4.097 min
 Delta R.T.: 0.051 min
 Response: 6905580
 Conc: 48.73 ng/ml



#20 AR-1242-5

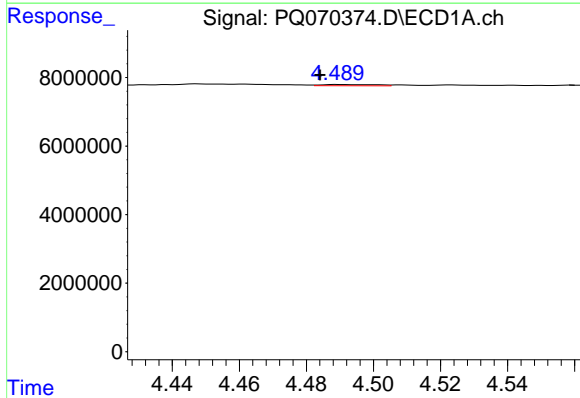
R.T.: 5.335 min
 Delta R.T.: -0.022 min
 Response: 10292168
 Conc: 94.21 ng/ml

Instrument :
 ECD_Q
 ClientSampleId :
 HEXANE



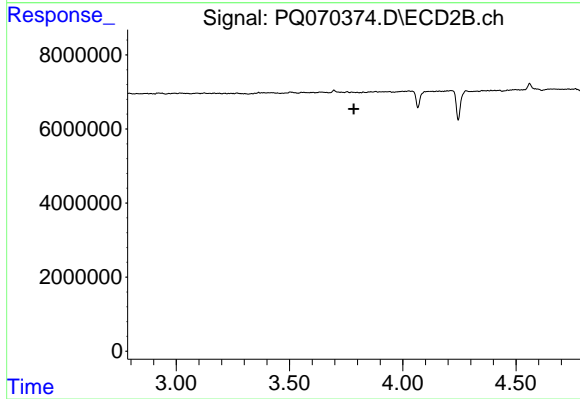
#20 AR-1242-5

R.T.: 4.560 min
 Delta R.T.: 0.018 min
 Response: 14917279
 Conc: 97.33 ng/ml



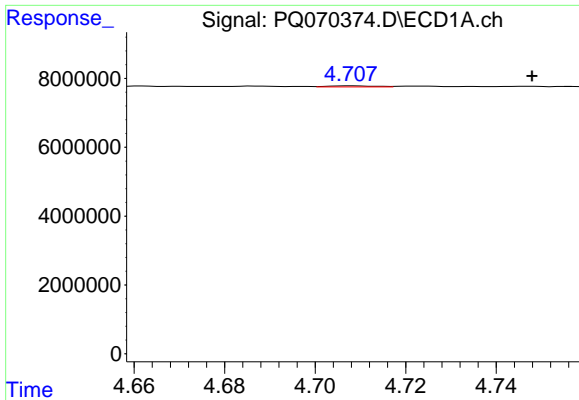
#21 AR-1248-1

R.T.: 4.489 min
 Delta R.T.: 0.005 min
 Response: 412938
 Conc: 3.92 ng/ml



#21 AR-1248-1

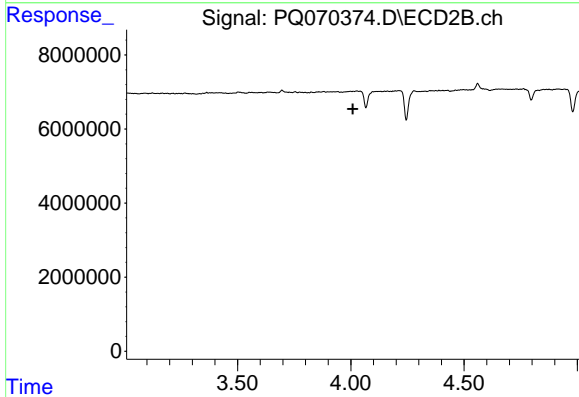
R.T.: 0.000 min
 Exp R.T.: 3.784 min
 Response: 0
 Conc: N.D.



#22 AR-1248-2

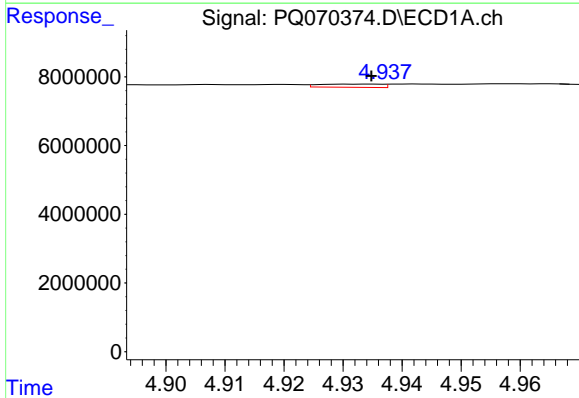
R.T.: 4.708 min
 Delta R.T.: -0.040 min
 Response: 238198
 Conc: 1.42 ng/ml

Instrument :
 ECD_Q
 ClientSampleId :
 HEXANE



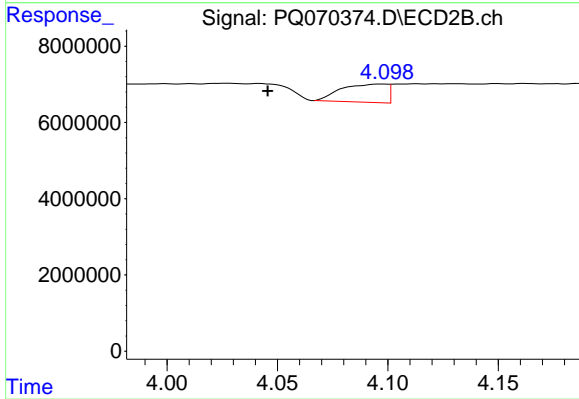
#22 AR-1248-2

R.T.: 0.000 min
 Exp R.T. : 4.008 min
 Response: 0
 Conc: N.D.



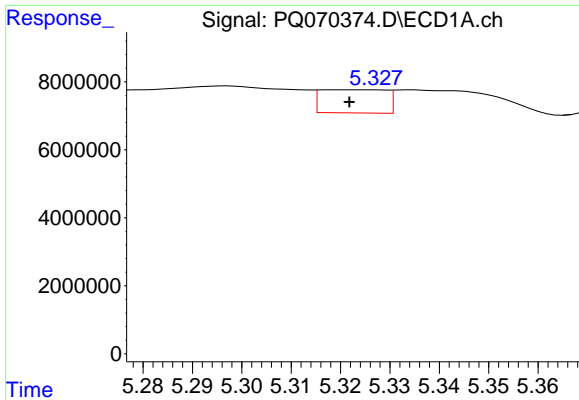
#23 AR-1248-3

R.T.: 4.931 min
 Delta R.T.: -0.004 min
 Response: 682034
 Conc: 3.43 ng/ml



#23 AR-1248-3

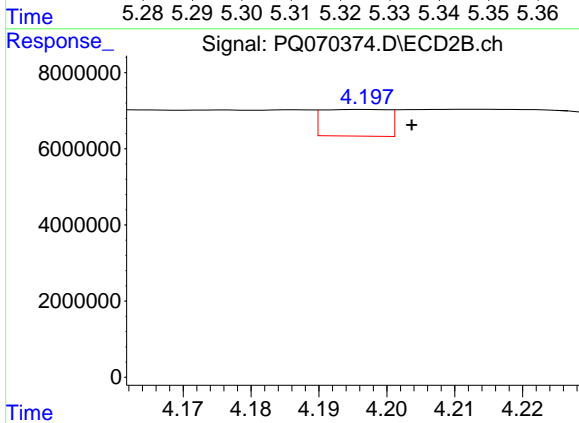
R.T.: 4.097 min
 Delta R.T.: 0.051 min
 Response: 6905580
 Conc: 34.59 ng/ml



#24 AR-1248-4

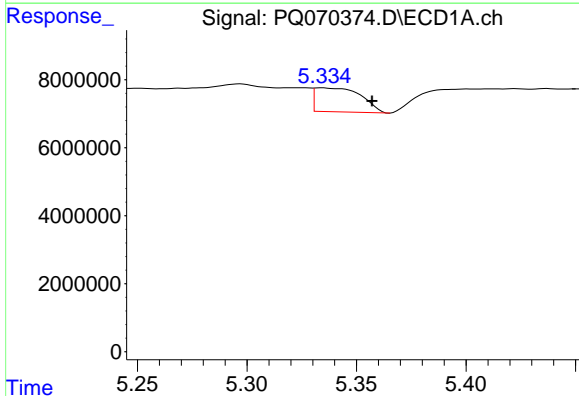
R.T.: 5.326 min
 Delta R.T.: 0.004 min
 Response: 6276735
 Conc: 35.11 ng/ml

Instrument :
 ECD_Q
 ClientSampleId :
 HEXANE



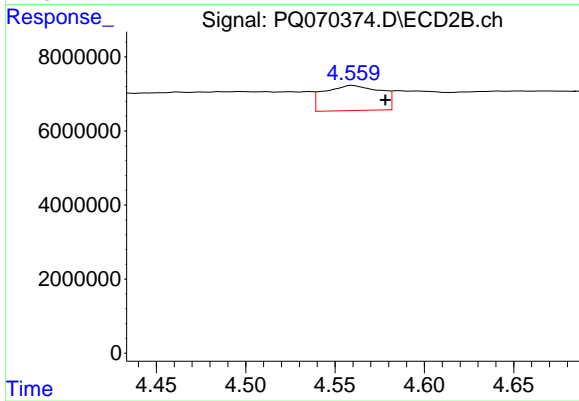
#24 AR-1248-4

R.T.: 4.196 min
 Delta R.T.: -0.007 min
 Response: 4701651
 Conc: 19.10 ng/ml



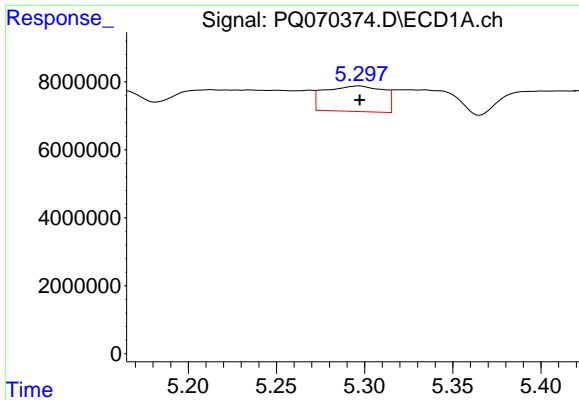
#25 AR-1248-5

R.T.: 5.335 min
 Delta R.T.: -0.023 min
 Response: 10292168
 Conc: 54.08 ng/ml



#25 AR-1248-5

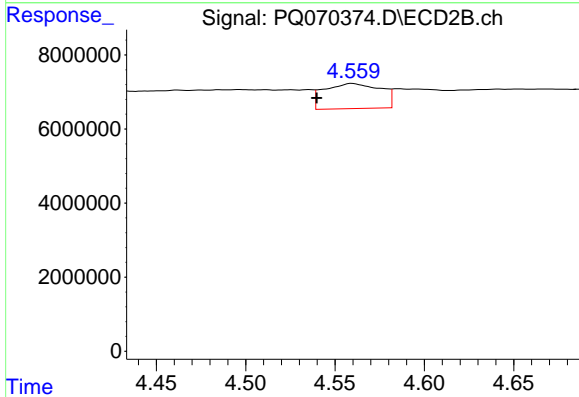
R.T.: 4.560 min
 Delta R.T.: -0.019 min
 Response: 14917279
 Conc: 74.49 ng/ml



#26 AR-1254-1

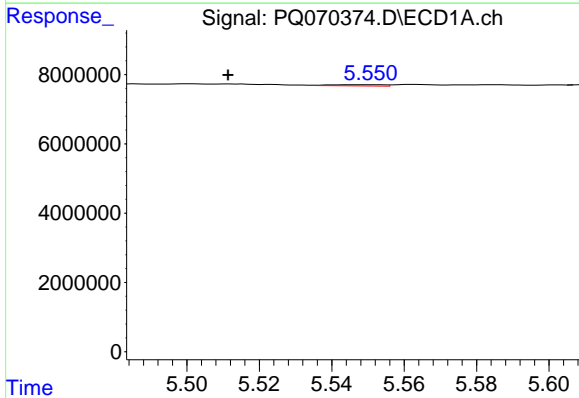
R.T.: 5.297 min
 Delta R.T.: 0.000 min
 Response: 17375538
 Conc: 75.34 ng/ml

Instrument :
 ECD_Q
 ClientSampleId :
 HEXANE



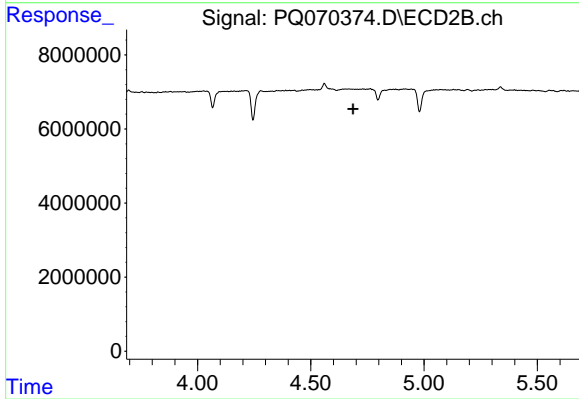
#26 AR-1254-1

R.T.: 4.560 min
 Delta R.T.: 0.020 min
 Response: 14917279
 Conc: 40.49 ng/ml



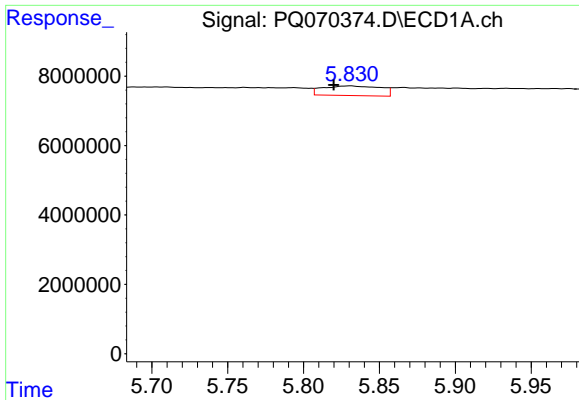
#27 AR-1254-2

R.T.: 5.550 min
 Delta R.T.: 0.038 min
 Response: 355817
 Conc: 1.05 ng/ml



#27 AR-1254-2

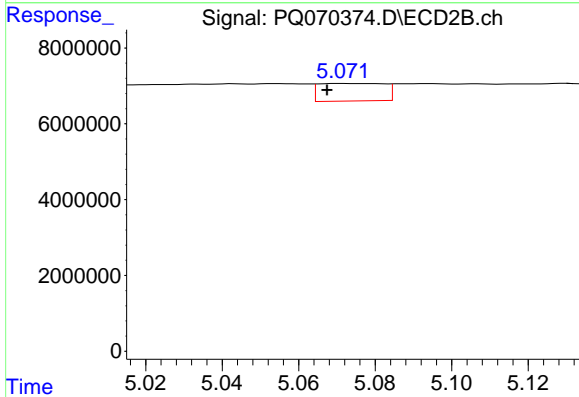
R.T.: 0.000 min
 Exp R.T. : 4.687 min
 Response: 0
 Conc: N.D.



#28 AR-1254-3

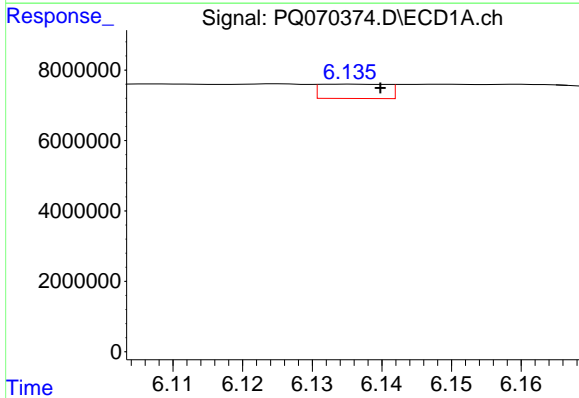
R.T.: 5.831 min
 Delta R.T.: 0.011 min
 Response: 7378489
 Conc: 105.00 ng/ml

Instrument :
 ECD_Q
 ClientSampleId :
 HEXANE



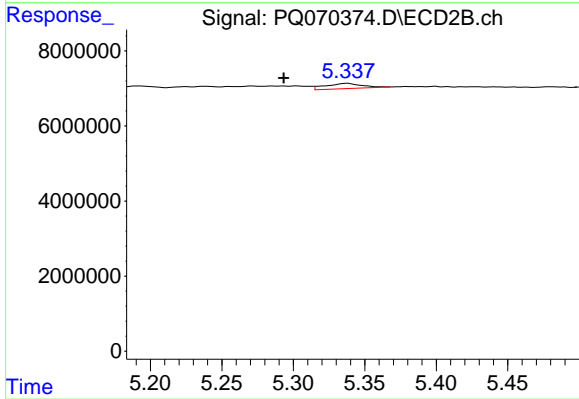
#28 AR-1254-3

R.T.: 5.071 min
 Delta R.T.: 0.004 min
 Response: 5502008
 Conc: 10.95 ng/ml



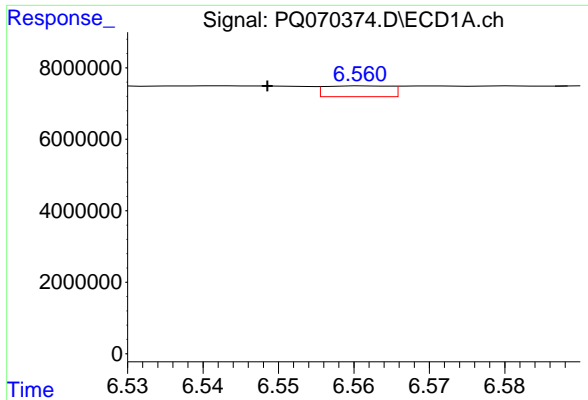
#29 AR-1254-4

R.T.: 6.135 min
 Delta R.T.: -0.005 min
 Response: 2717191
 Conc: 13.20 ng/ml



#29 AR-1254-4

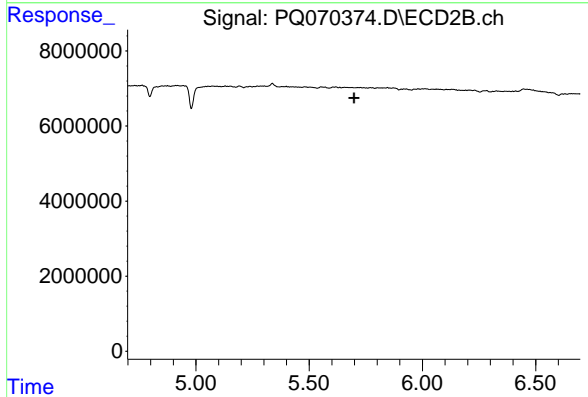
R.T.: 5.338 min
 Delta R.T.: 0.044 min
 Response: 2504170
 Conc: 10.67 ng/ml



#30 AR-1254-5

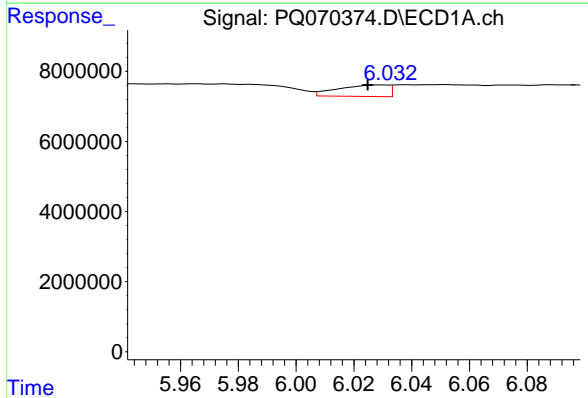
R.T.: 6.561 min
 Delta R.T.: 0.013 min
 Response: 1813958
 Conc: 7.04 ng/ml

Instrument :
 ECD_Q
 ClientSampleId :
 HEXANE



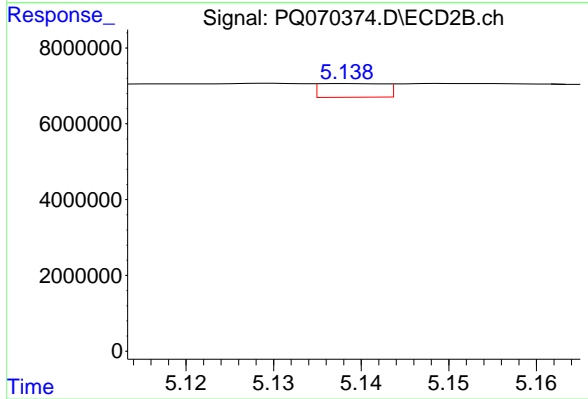
#30 AR-1254-5

R.T.: 0.000 min
 Exp R.T. : 5.698 min
 Response: 0
 Conc: N.D.



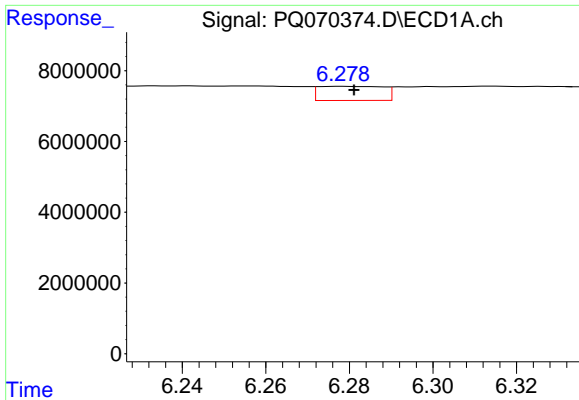
#31 AR-1260-1

R.T.: 6.030 min
 Delta R.T.: 0.006 min
 Response: 3972296
 Conc: 15.27 ng/ml



#31 AR-1260-1

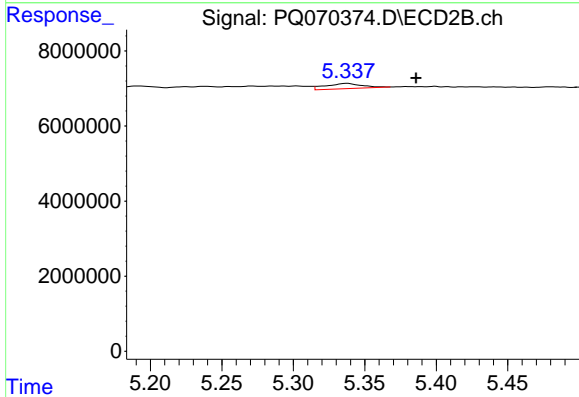
R.T.: 5.139 min
 Delta R.T.: -0.058 min
 Response: 1870830
 Conc: 5.55 ng/ml



#32 AR-1260-2

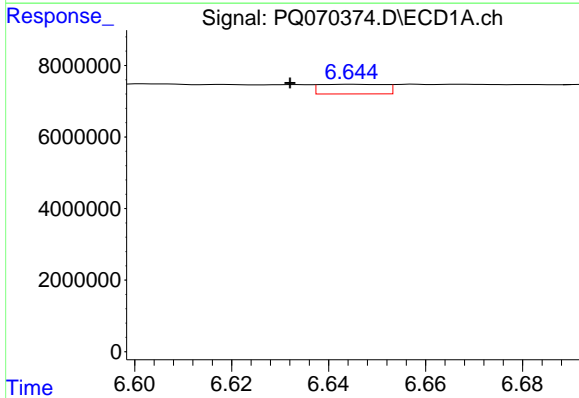
R.T.: 6.279 min
 Delta R.T.: -0.003 min
 Response: 4289906
 Conc: 16.33 ng/ml

Instrument :
 ECD_Q
 ClientSampleId :
 HEXANE



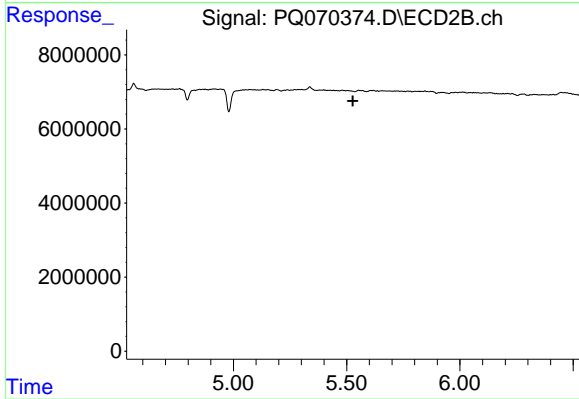
#32 AR-1260-2

R.T.: 5.338 min
 Delta R.T.: -0.048 min
 Response: 2504170
 Conc: 6.79 ng/ml



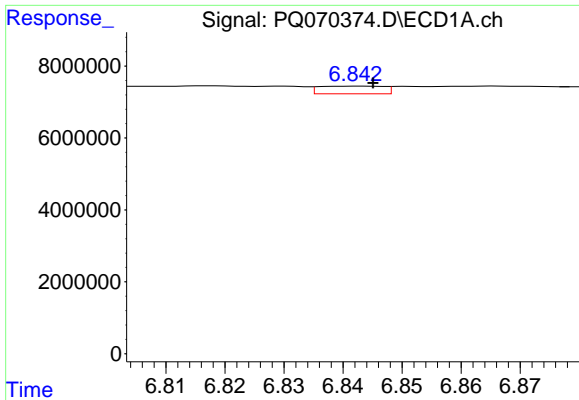
#33 AR-1260-3

R.T.: 6.645 min
 Delta R.T.: 0.013 min
 Response: 2515882
 Conc: 10.84 ng/ml



#33 AR-1260-3

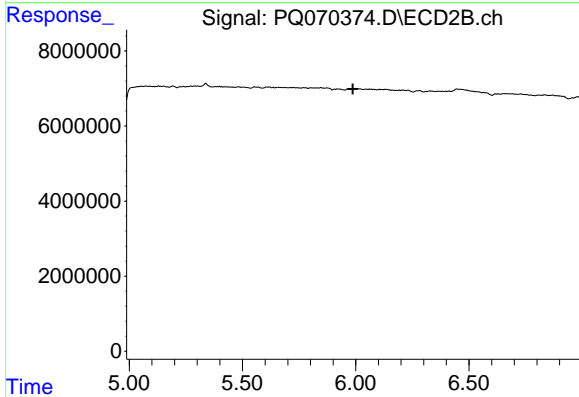
R.T.: 0.000 min
 Exp R.T.: 5.527 min
 Response: 0
 Conc: N.D.



#34 AR-1260-4

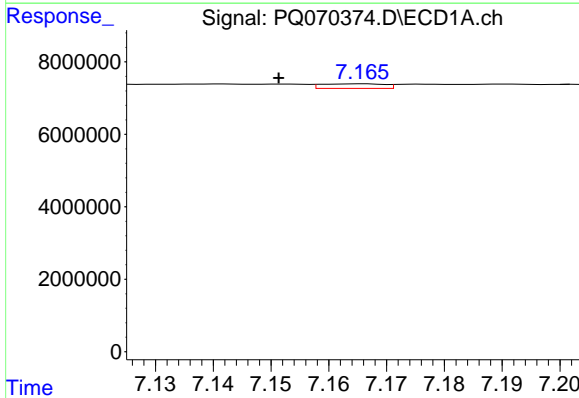
R.T.: 6.842 min
 Delta R.T.: -0.003 min
 Response: 1629181
 Conc: 6.50 ng/ml

Instrument :
 ECD_Q
 ClientSampleId :
 HEXANE



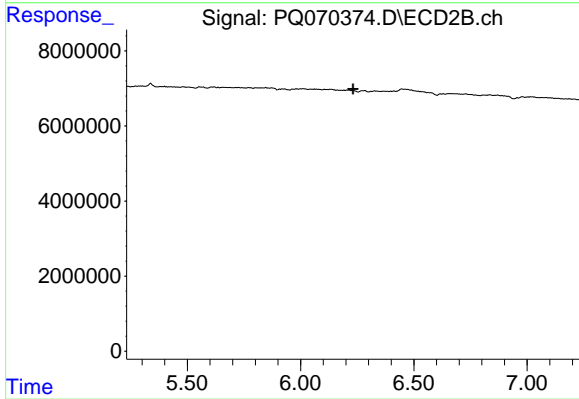
#34 AR-1260-4

R.T.: 0.000 min
 Exp R.T. : 5.987 min
 Response: 0
 Conc: N.D.



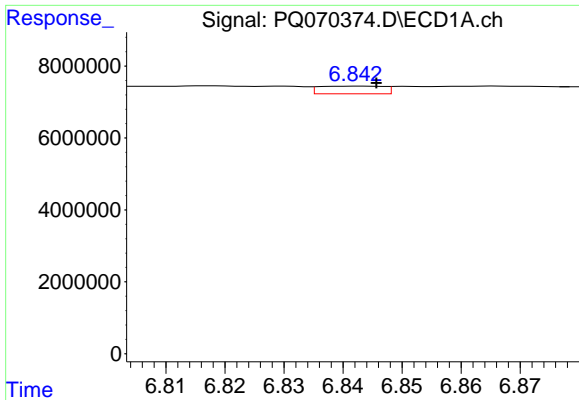
#35 AR-1260-5

R.T.: 7.166 min
 Delta R.T.: 0.014 min
 Response: 961458
 Conc: 2.37 ng/ml



#35 AR-1260-5

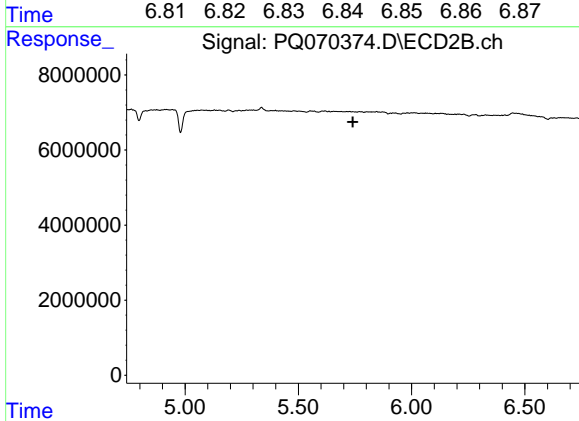
R.T.: 0.000 min
 Exp R.T. : 6.231 min
 Response: 0
 Conc: N.D.



#36 AR-1262-1

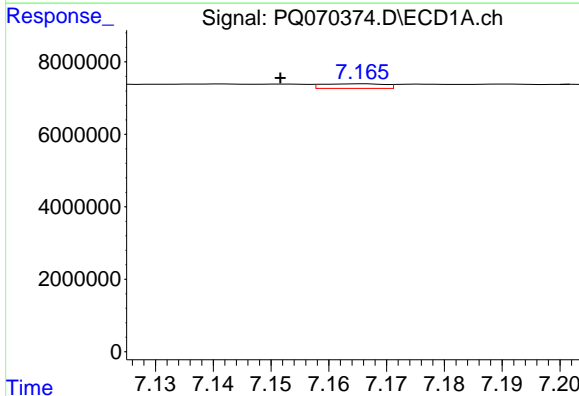
R.T.: 6.842 min
 Delta R.T.: -0.003 min
 Response: 1629181
 Conc: 5.14 ng/ml

Instrument :
 ECD_Q
 ClientSampleId :
 HEXANE



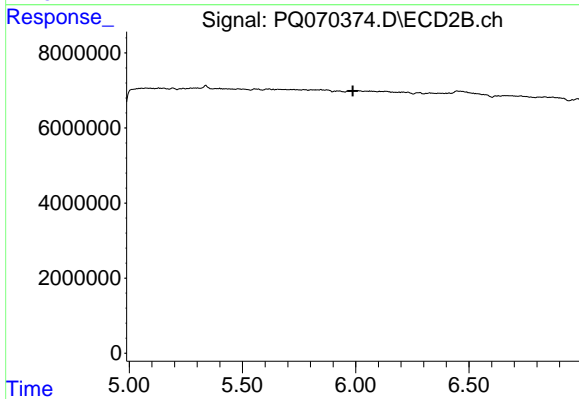
#36 AR-1262-1

R.T.: 0.000 min
 Exp R.T. : 5.741 min
 Response: 0
 Conc: N.D.



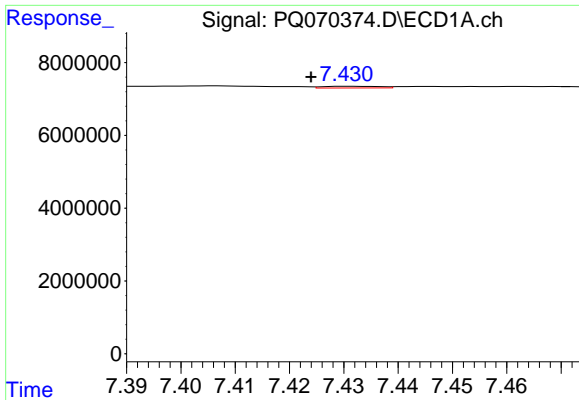
#37 AR-1262-2

R.T.: 7.166 min
 Delta R.T.: 0.014 min
 Response: 961458
 Conc: 2.02 ng/ml



#37 AR-1262-2

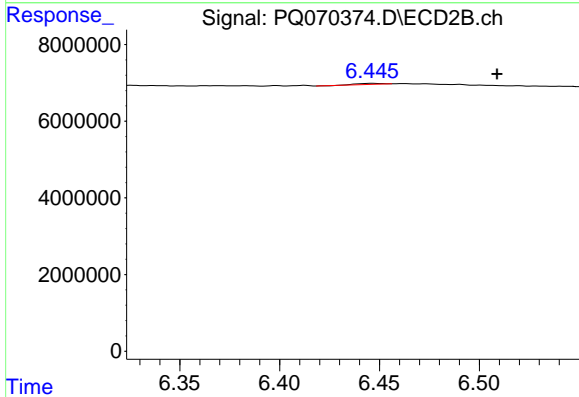
R.T.: 0.000 min
 Exp R.T. : 5.987 min
 Response: 0
 Conc: N.D.



#38 AR-1262-3

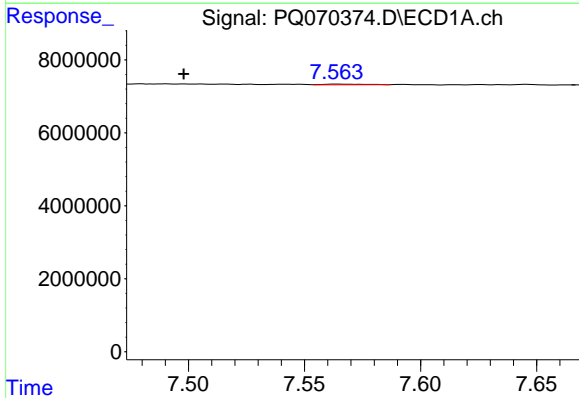
R.T.: 7.431 min
 Delta R.T.: 0.007 min
 Response: 345037
 Conc: 1.04 ng/ml

Instrument :
 ECD_Q
 ClientSampleId :
 HEXANE



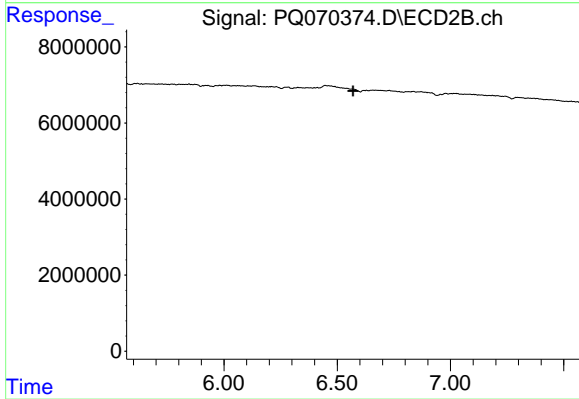
#38 AR-1262-3

R.T.: 6.446 min
 Delta R.T.: -0.063 min
 Response: 218490
 Conc: 0.64 ng/ml



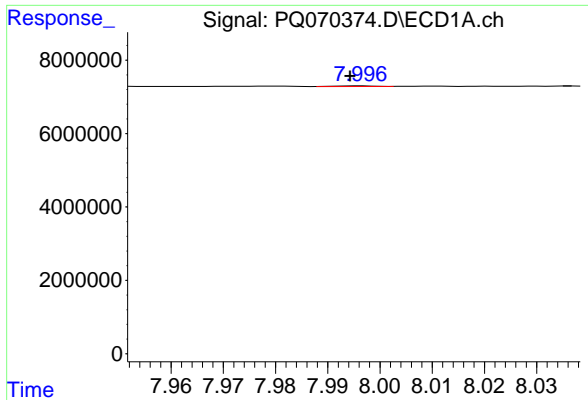
#39 AR-1262-4

R.T.: 7.564 min
 Delta R.T.: 0.066 min
 Response: 227030
 Conc: 0.81 ng/ml



#39 AR-1262-4

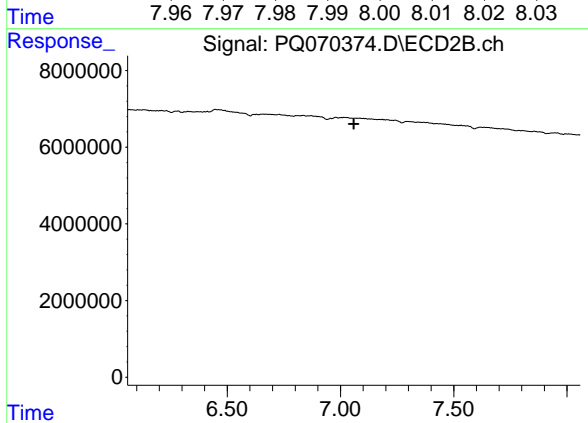
R.T.: 0.000 min
 Exp R.T. : 6.570 min
 Response: 0
 Conc: N.D.



#40 AR-1262-5

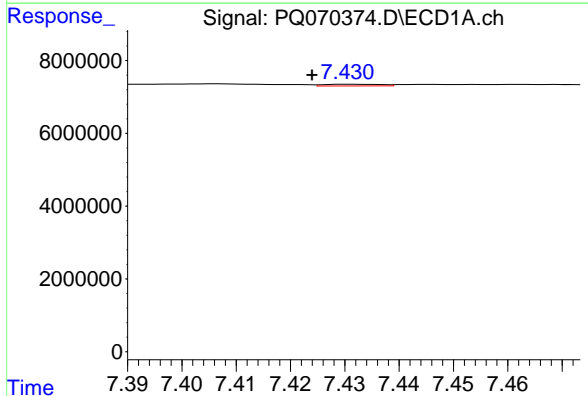
R.T.: 7.996 min
 Delta R.T.: 0.002 min
 Response: 77169
 Conc: 0.51 ng/ml

Instrument :
 ECD_Q
 ClientSampleId :
 HEXANE



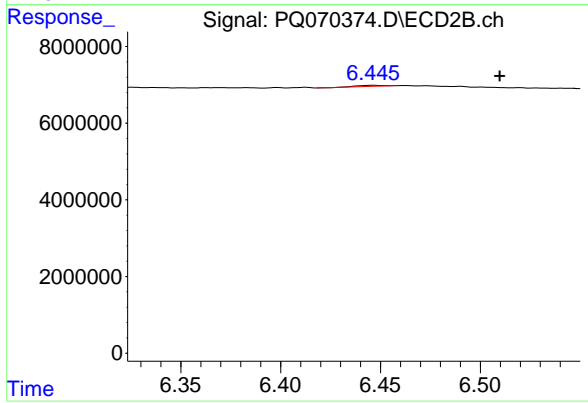
#40 AR-1262-5

R.T.: 0.000 min
 Exp R.T. : 7.059 min
 Response: 0
 Conc: N.D.



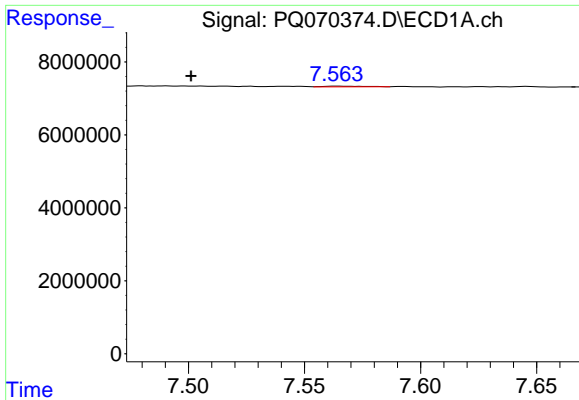
#41 AR-1268-1

R.T.: 7.431 min
 Delta R.T.: 0.007 min
 Response: 345037
 Conc: 0.55 ng/ml



#41 AR-1268-1

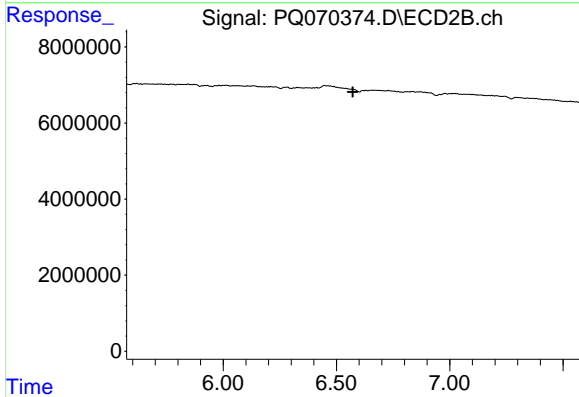
R.T.: 6.446 min
 Delta R.T.: -0.063 min
 Response: 218490
 Conc: 0.23 ng/ml



#42 AR-1268-2

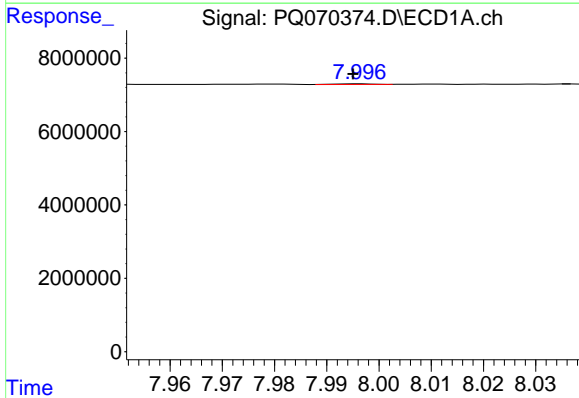
R.T.: 7.564 min
 Delta R.T.: 0.062 min
 Response: 227030
 Conc: 0.39 ng/ml

Instrument :
 ECD_Q
 ClientSampleId :
 HEXANE



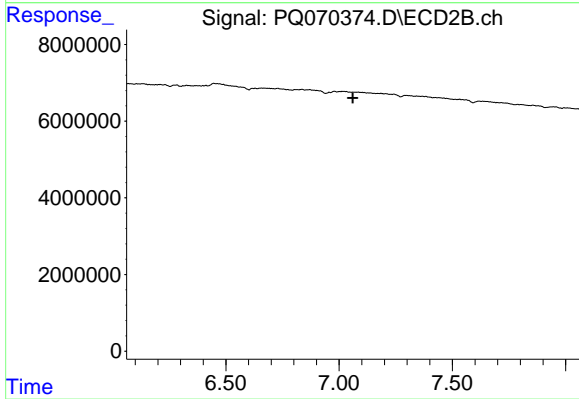
#42 AR-1268-2

R.T.: 0.000 min
 Exp R.T. : 6.572 min
 Response: 0
 Conc: N.D.



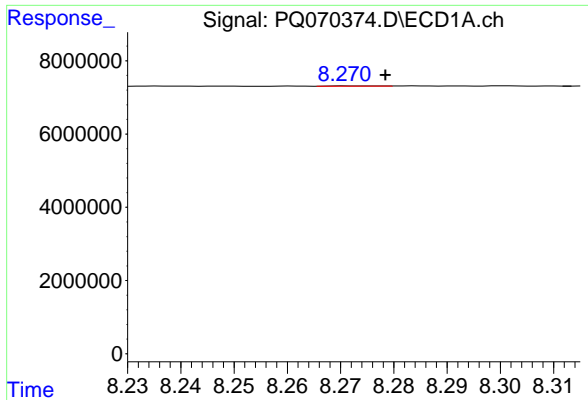
#44 AR-1268-4

R.T.: 7.996 min
 Delta R.T.: 0.001 min
 Response: 77169
 Conc: 0.47 ng/ml



#44 AR-1268-4

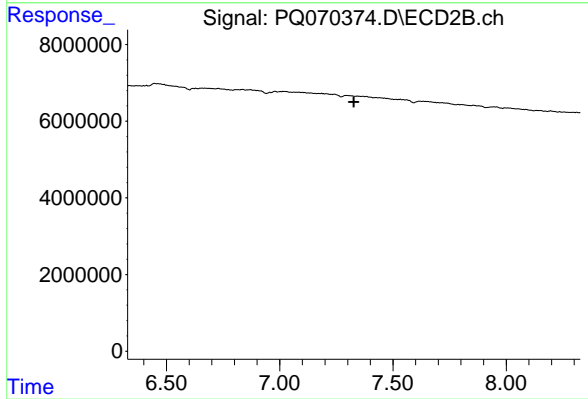
R.T.: 0.000 min
 Exp R.T. : 7.060 min
 Response: 0
 Conc: N.D.



#45 AR-1268-5

R.T.: 8.271 min
 Delta R.T.: -0.007 min
 Response: 49112
 Conc: 0.04 ng/ml

Instrument :
 ECD_Q
 ClientSampleId :
 HEXANE



#45 AR-1268-5

R.T.: 0.000 min
 Exp R.T. : 7.328 min
 Response: 0
 Conc: N.D.