

Data Path : Z:\pestpcbsrv\HPCHEM1\ECD_Q\Data\PQ061924\
 Data File : PQ067049.D
 Signal(s) : Signal #1: ECD1A.ch Signal #2: ECD2B.ch
 Acq On : 19 Jun 2024 12:36
 Operator : YP\AJ
 Sample : P2937-18 10X
 Misc :
 ALS Vial : 16 Sample Multiplier: 1

Instrument :
 ECD_Q
 ClientSampleId :
 BC274271-2-2

Integration File signal 1: autoint1.e
 Integration File signal 2: autoint2.e
 Quant Time: Jun 19 14:01:05 2024
 Quant Method : Z:\pestpcbsrv\HPCHEM1\ECD_Q\Method\PQ053124.M
 Quant Title : GC EXTRACTABLES
 QLast Update : Mon Jun 03 10:00:54 2024
 Response via : Initial Calibration
 Integrator: ChemStation

Volume Inj. : 2 µl
 Signal #1 Phase : ZB-MR1 Signal #2 Phase: ZB-MR2
 Signal #1 Info : 30Mx0.32mmx 0.50µ Signal #2 Info : 30M x 0.32mm x 0.25µm

Compound	RT#1	RT#2	Resp#1	Resp#2	ng/ml	ng/ml
System Monitoring Compounds						
1) SA Tetrachlo...	3.450	2.826	12448396	10597927	2.248	1.812
2) SA Decachlor...	8.709	7.611	8023721	6498279	2.116	1.131 #
Target Compounds						
3) L1 AR-1016-1	4.564	3.831	122136	180648	0.722	0.884
4) L1 AR-1016-2	4.582	3.851	64727	273753	0.246	0.923 #
5) L1 AR-1016-3	4.592f	4.015	47646	474650	0.297	2.892 #
6) L1 AR-1016-4	4.731	4.060	38824	4862974	0.303	35.305 #
7) L1 AR-1016-5	5.021	4.256	1411860	2907470	10.962	16.944 #
8) L2 AR-1221-1	0.000	3.009	0	203509	N.D.	2.541 #
9) L2 AR-1221-2	0.000	3.096	0	188717	N.D.	3.611 #
10) L2 AR-1221-3	0.000	3.176	0	120664	N.D.	0.691 #
11) L3 AR-1232-1	0.000	3.176	0	120664	N.D.	0.836 #
12) L3 AR-1232-2	4.265f	3.851	269895	273753	4.093	1.927 #
13) L3 AR-1232-3	4.582	4.015	64727	474650	0.537	6.097 #
14) L3 AR-1232-4	4.731	4.099	38824	1477278	0.675	22.215 #
15) L3 AR-1232-5	4.829	4.256	4116924	2907470	102.907	38.778 #
16) L4 AR-1242-1	4.564	3.831	122136	180648	0.857	1.039
17) L4 AR-1242-2	4.582	3.851	64727	273753	0.294	1.098 #
18) L4 AR-1242-3	4.592f	4.015	47646	474650	0.354	3.401 #
19) L4 AR-1242-4	4.731	4.099	38824	1477278	0.367	11.310 #
20) L4 AR-1242-5	5.458	4.594	7547884	11441764	66.079	68.925
21) L5 AR-1248-1	4.564	3.831	122136	180648	1.158	1.411
22) L5 AR-1248-2	4.829	4.060	4116924	4862974	28.078	25.373
23) L5 AR-1248-3	5.021	4.099	1411860	1477278	8.078	8.026
24) L5 AR-1248-4	5.420	4.256	6393860	2907470	32.597	12.887 #
25) L5 AR-1248-5	5.458	4.633	7547884	1161315	37.970	5.427 #
26) L6 AR-1254-1	5.393	4.594	13819659	11441764	66.689	34.120 #
27) L6 AR-1254-2	5.613	4.742	21418967	10364078	66.393	35.902 #
28) L6 AR-1254-3	5.970	5.124	27889564	15555892	82.167	33.462 #
29) L6 AR-1254-4	6.259	5.351	29505586	9801760	125.326	35.185 #
30) L6 AR-1254-5	6.679	5.758	32813041	14948702	123.844	35.671 #
31) L7 AR-1260-1	6.139	5.255	25305685	8786682	98.137	26.544 #
32) L7 AR-1260-2	6.402	5.444	21241336	6862582	69.878	17.556 #
33) L7 AR-1260-3	6.764	5.582	9977791	6914684	45.091	18.251 #
34) L7 AR-1260-4	6.959f	6.048	15414661	1088452	63.633	3.464 #
35) L7 AR-1260-5	7.299	6.293	2997827	2212819	6.127	3.352 #
36) L8 AR-1262-1	6.764	5.820	9977791	1178109	30.180	2.725 #
37) L8 AR-1262-2	7.299	6.293	2997827	2212819	5.596	3.036 #
38) L8 AR-1262-3	7.583	6.573	1595415	264165	4.540	0.848 #
39) L8 AR-1262-4	7.658	6.627	155951	1833659	0.578	3.215 #
40) L8 AR-1262-5	8.175	7.124	564024	337830	3.369	1.302 #
41) L9 AR-1268-1	7.583	6.573	1595415	264165	2.658	0.301 #

Data Path : Z:\pestpcbsrv\HPCHEM1\ECD_Q\Data\PQ061924\
 Data File : PQ067049.D
 Signal(s) : Signal #1: ECD1A.ch Signal #2: ECD2B.ch
 Acq On : 19 Jun 2024 12:36
 Operator : YP\AJ
 Sample : P2937-18 10X
 Misc :
 ALS Vial : 16 Sample Multiplier: 1

Instrument :
 ECD_Q
ClientSampleId :
 BC274271-2-2

Integration File signal 1: autoint1.e
 Integration File signal 2: autoint2.e
 Quant Time: Jun 19 14:01:05 2024
 Quant Method : Z:\pestpcbsrv\HPCHEM1\ECD_Q\Method\PQ053124.M
 Quant Title : GC EXTRACTABLES
 QLast Update : Mon Jun 03 10:00:54 2024
 Response via : Initial Calibration
 Integrator: ChemStation

Volume Inj. : 2 µl
 Signal #1 Phase : ZB-MR1 Signal #2 Phase: ZB-MR2
 Signal #1 Info : 30Mx0.32mmx 0.50µ Signal #2 Info : 30M x 0.32mm x 0.25µm

	Compound	RT#1	RT#2	Resp#1	Resp#2	ng/ml	ng/ml
42)	L9 AR-1268-2	7.658	6.627	155951	1833659	0.289	2.291 #
44)	L9 AR-1268-4	8.175	7.124	564024	337830	3.201	1.191 #
45)	L9 AR-1268-5	8.442	0.000	232960	0	0.174	N.D. #

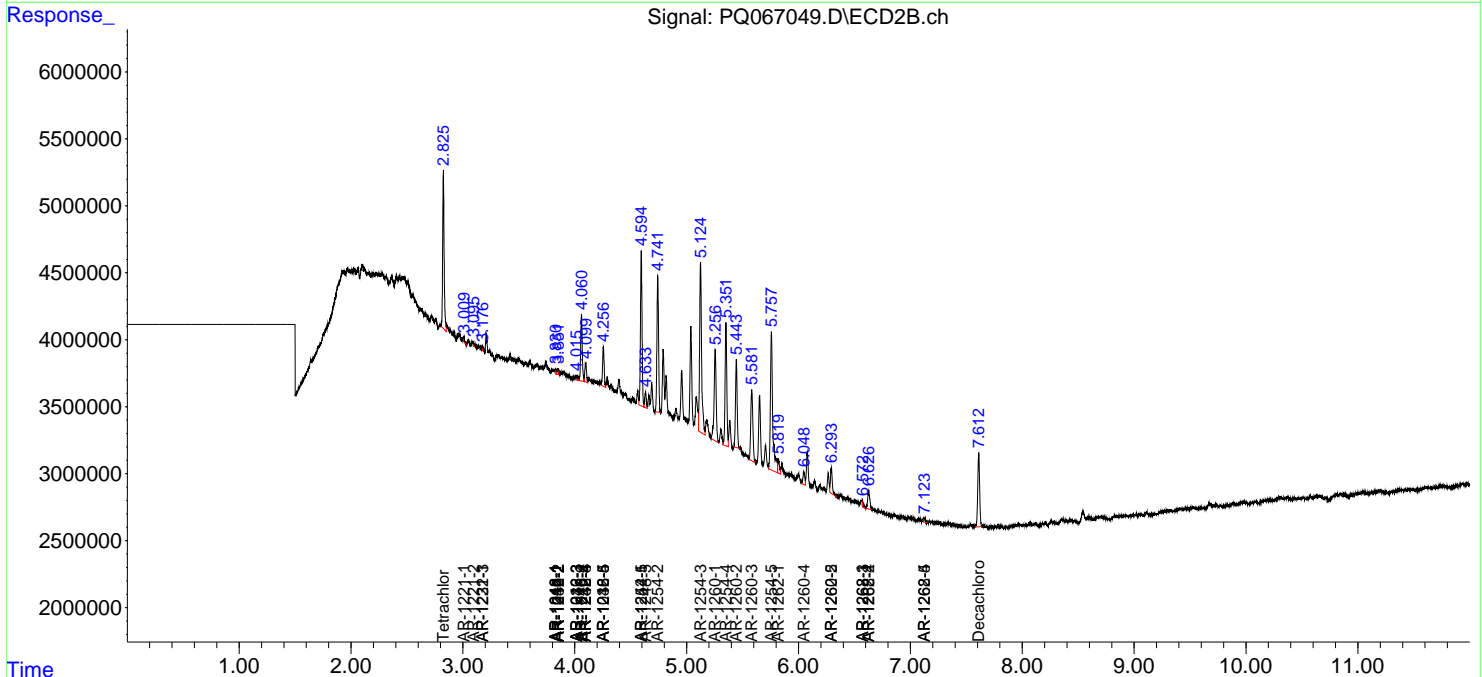
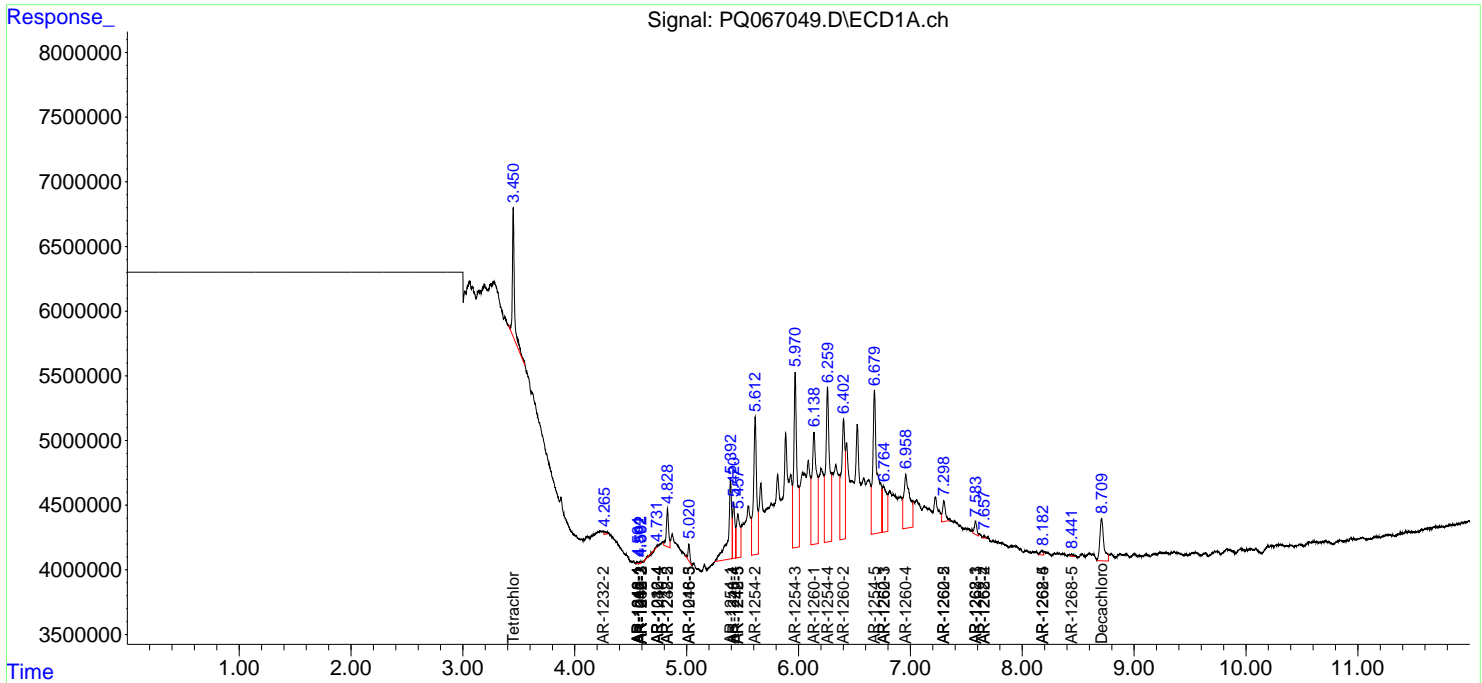
(f)=RT Delta > 1/2 Window (#)=Amounts differ by > 25% (m)=manual int.

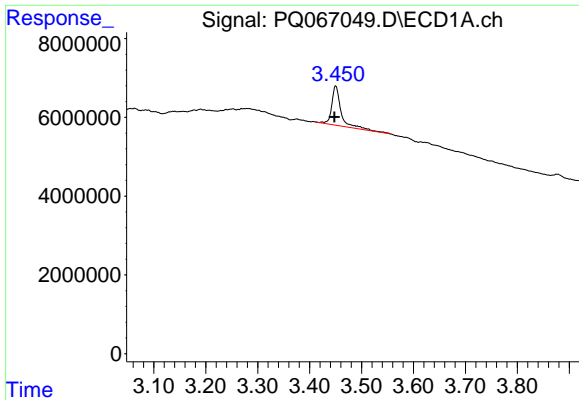
Data Path : Z:\pestpcbsrv\HPCHEM1\ECD_Q\Data\PQ061924\
 Data File : PQ067049.D
 Signal(s) : Signal #1: ECD1A.ch Signal #2: ECD2B.ch
 Acq On : 19 Jun 2024 12:36
 Operator : YP\AJ
 Sample : P2937-18 10X
 Misc :
 ALS Vial : 16 Sample Multiplier: 1

Instrument :
 ECD_Q
 ClientSampleId :
 BC274271-2-2

Integration File signal 1: autoint1.e
 Integration File signal 2: autoint2.e
 Quant Time: Jun 19 14:01:05 2024
 Quant Method : Z:\pestpcbsrv\HPCHEM1\ECD_Q\Method\PQ053124.M
 Quant Title : GC EXTRACTABLES
 QLast Update : Mon Jun 03 10:00:54 2024
 Response via : Initial Calibration
 Integrator: ChemStation

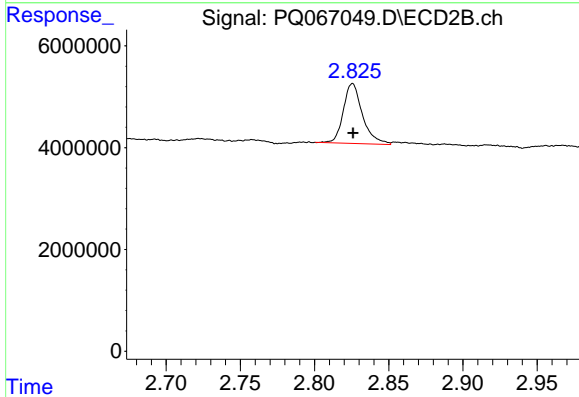
Volume Inj. : 2 µl
 Signal #1 Phase : ZB-MR1 Signal #2 Phase: ZB-MR2
 Signal #1 Info : 30Mx0.32mmx 0.50µ Signal #2 Info : 30M x 0.32mm x 0.25µm



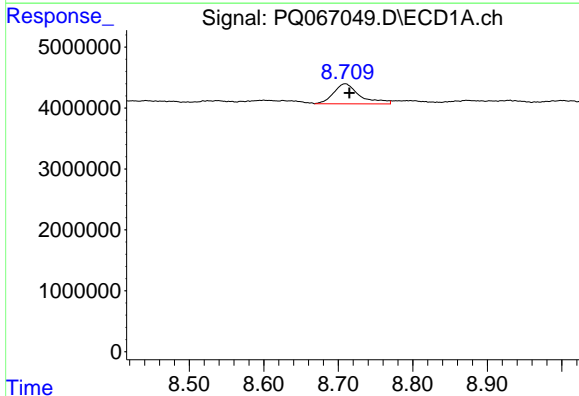


#1 Tetrachloro-m-xylene
 R.T.: 3.450 min
 Delta R.T.: 0.002 min
 Response: 12448396
 Conc: 2.25 ng/ml

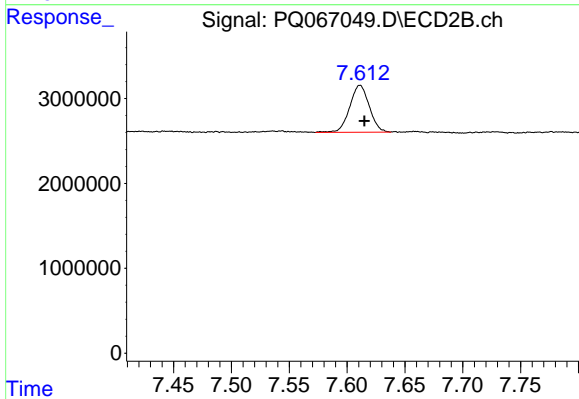
Instrument :
 ECD_Q
 ClientSampleId :
 BC274271-2-2



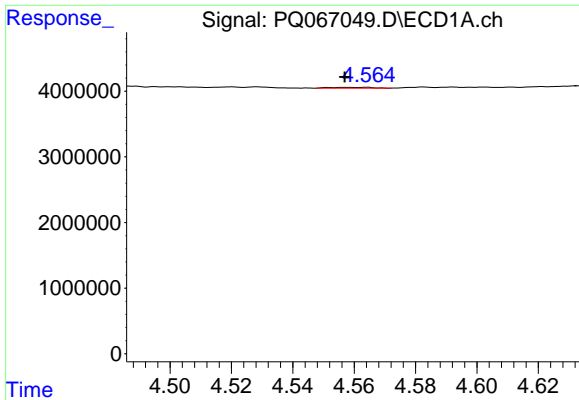
#1 Tetrachloro-m-xylene
 R.T.: 2.826 min
 Delta R.T.: 0.000 min
 Response: 10597927
 Conc: 1.81 ng/ml



#2 Decachlorobiphenyl
 R.T.: 8.709 min
 Delta R.T.: -0.006 min
 Response: 8023721
 Conc: 2.12 ng/ml



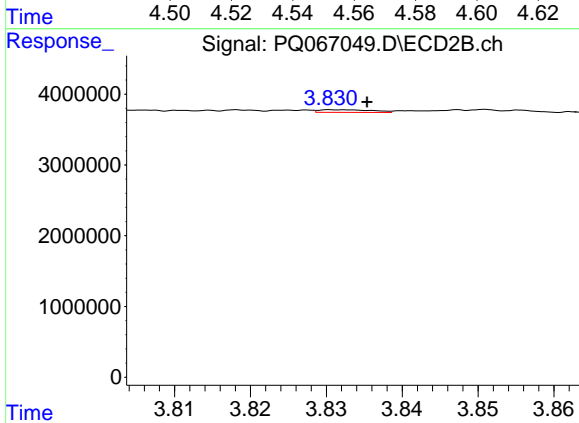
#2 Decachlorobiphenyl
 R.T.: 7.611 min
 Delta R.T.: -0.004 min
 Response: 6498279
 Conc: 1.13 ng/ml



#3 AR-1016-1

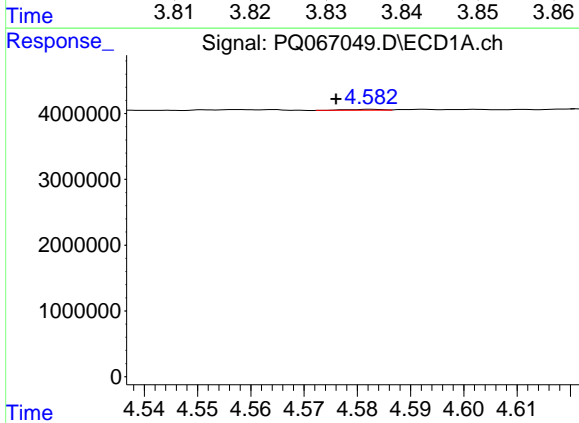
R.T.: 4.564 min
 Delta R.T.: 0.007 min
 Response: 122136
 Conc: 0.72 ng/ml

Instrument :
 ECD_Q
 ClientSampleId :
 BC274271-2-2



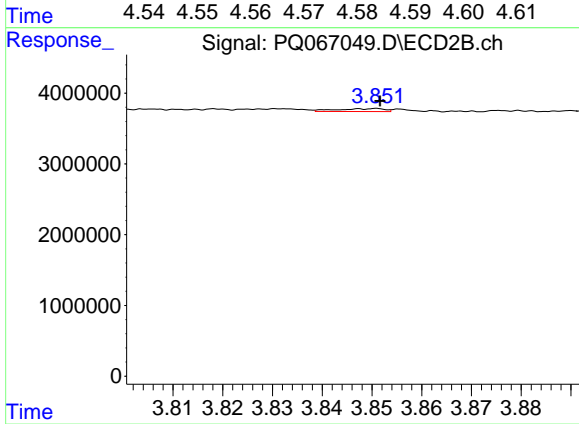
#3 AR-1016-1

R.T.: 3.831 min
 Delta R.T.: -0.004 min
 Response: 180648
 Conc: 0.88 ng/ml



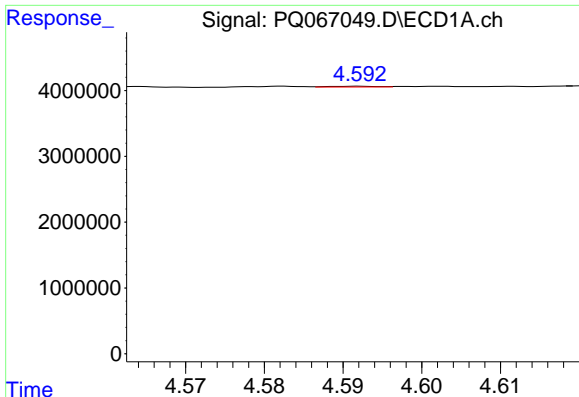
#4 AR-1016-2

R.T.: 4.582 min
 Delta R.T.: 0.006 min
 Response: 64727
 Conc: 0.25 ng/ml



#4 AR-1016-2

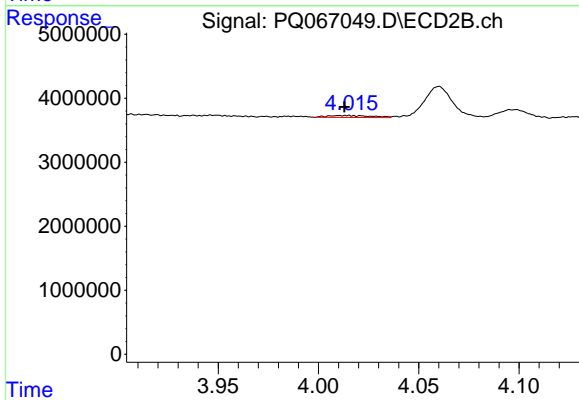
R.T.: 3.851 min
 Delta R.T.: 0.000 min
 Response: 273753
 Conc: 0.92 ng/ml



#5 AR-1016-3

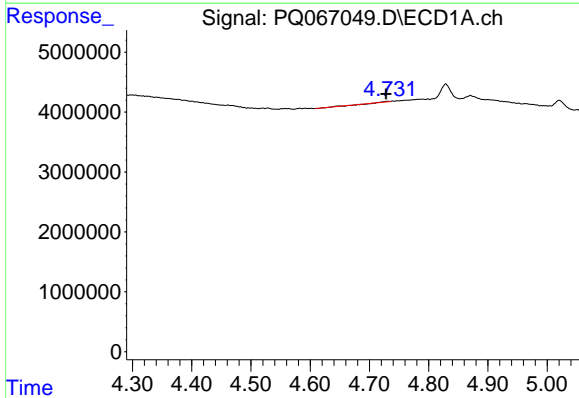
R.T.: 4.592 min
 Delta R.T.: -0.043 min
 Response: 47646
 Conc: 0.30 ng/ml

Instrument :
 ECD_Q
 ClientSampleId :
 BC274271-2-2



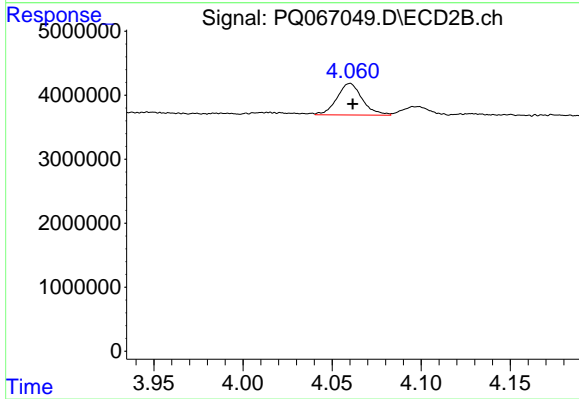
#5 AR-1016-3

R.T.: 4.015 min
 Delta R.T.: 0.002 min
 Response: 474650
 Conc: 2.89 ng/ml



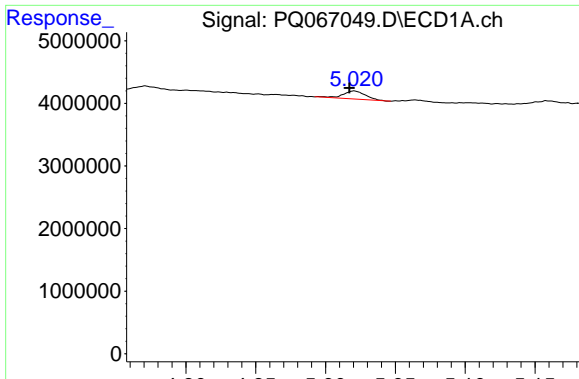
#6 AR-1016-4

R.T.: 4.731 min
 Delta R.T.: 0.003 min
 Response: 38824
 Conc: 0.30 ng/ml



#6 AR-1016-4

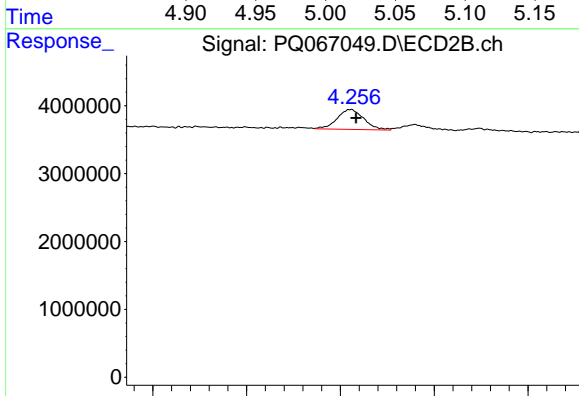
R.T.: 4.060 min
 Delta R.T.: -0.001 min
 Response: 4862974
 Conc: 35.31 ng/ml



#7 AR-1016-5

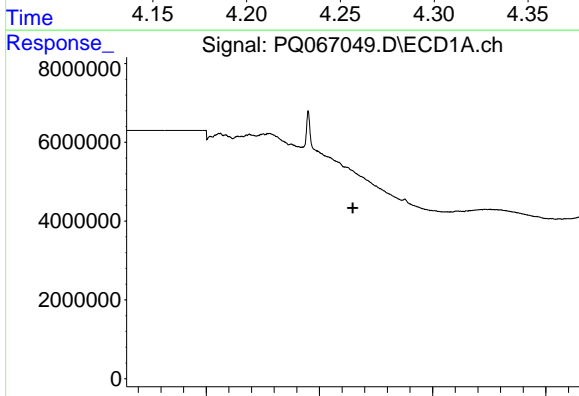
R.T.: 5.021 min
 Delta R.T.: 0.003 min
 Response: 1411860
 Conc: 10.96 ng/ml

Instrument :
 ECD_Q
 ClientSampleId :
 BC274271-2-2



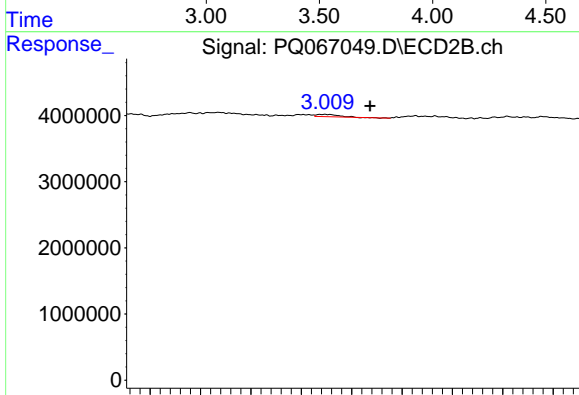
#7 AR-1016-5

R.T.: 4.256 min
 Delta R.T.: -0.003 min
 Response: 2907470
 Conc: 16.94 ng/ml



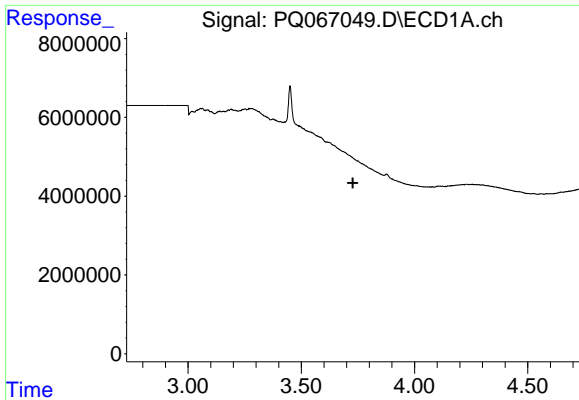
#8 AR-1221-1

R.T.: 0.000 min
 Exp R.T. : 3.648 min
 Response: 0
 Conc: N.D.



#8 AR-1221-1

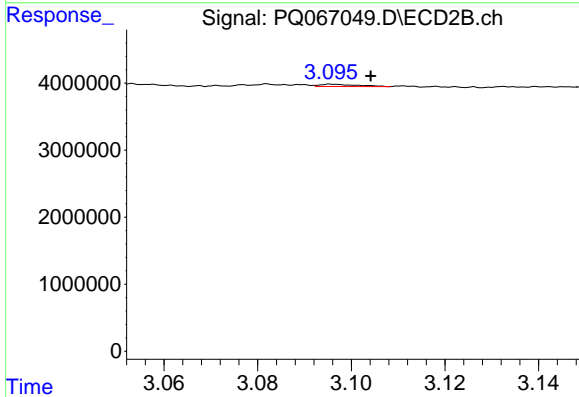
R.T.: 3.009 min
 Delta R.T.: -0.018 min
 Response: 203509
 Conc: 2.54 ng/ml



#9 AR-1221-2

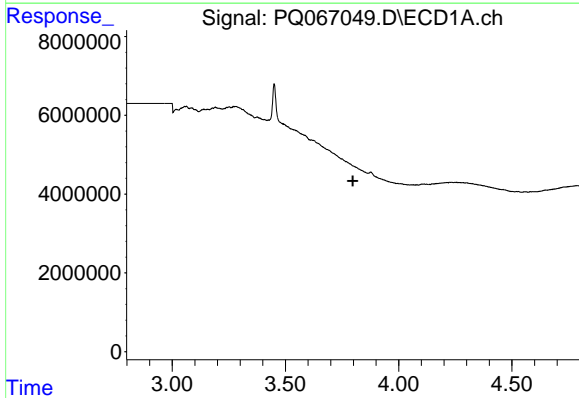
R.T.: 0.000 min
 Exp R.T. : 3.728 min
 Response: 0
 Conc: N.D.

Instrument :
 ECD_Q
 ClientSampleId :
 BC274271-2-2



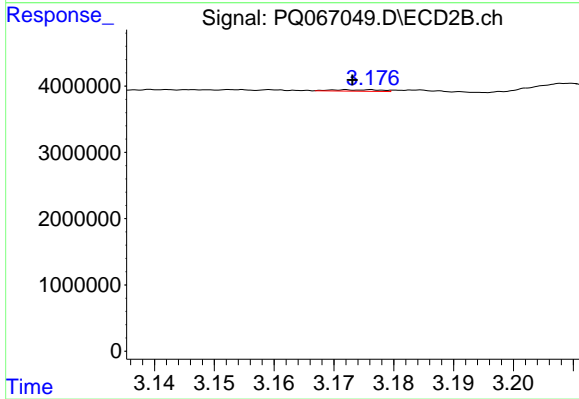
#9 AR-1221-2

R.T.: 3.096 min
 Delta R.T.: -0.008 min
 Response: 188717
 Conc: 3.61 ng/ml



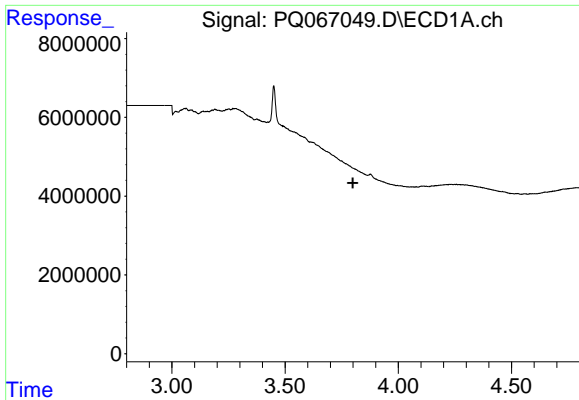
#10 AR-1221-3

R.T.: 0.000 min
 Exp R.T. : 3.798 min
 Response: 0
 Conc: N.D.



#10 AR-1221-3

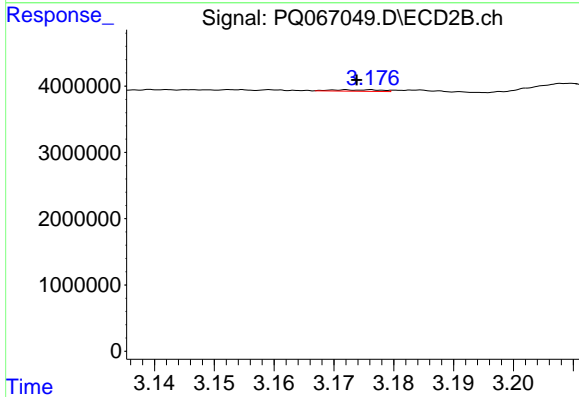
R.T.: 3.176 min
 Delta R.T.: 0.003 min
 Response: 120664
 Conc: 0.69 ng/ml



#11 AR-1232-1

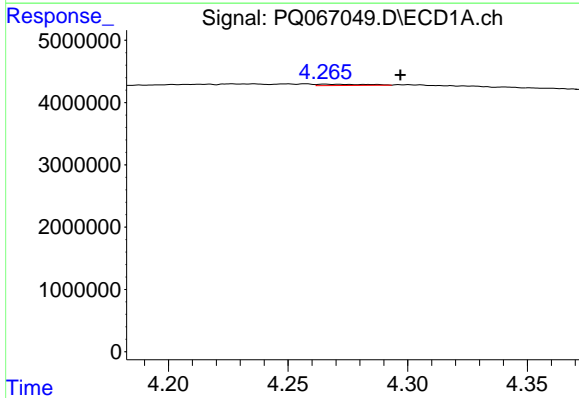
R.T.: 0.000 min
 Exp R.T.: 3.799 min
 Response: 0
 Conc: N.D.

Instrument : ECD_Q
 ClientSampleId : BC274271-2-2



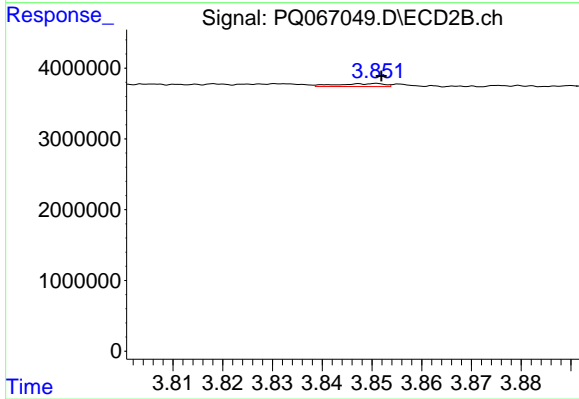
#11 AR-1232-1

R.T.: 3.176 min
 Delta R.T.: 0.002 min
 Response: 120664
 Conc: 0.84 ng/ml



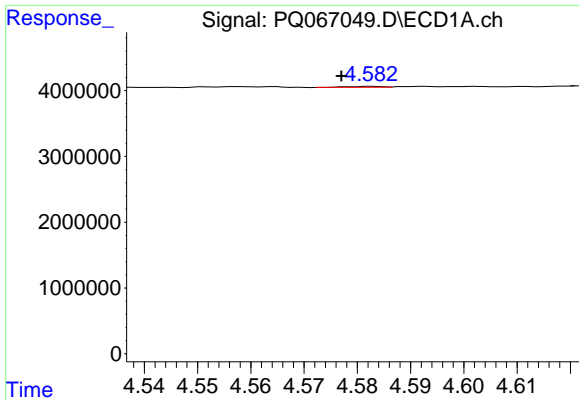
#12 AR-1232-2

R.T.: 4.265 min
 Delta R.T.: -0.032 min
 Response: 269895
 Conc: 4.09 ng/ml



#12 AR-1232-2

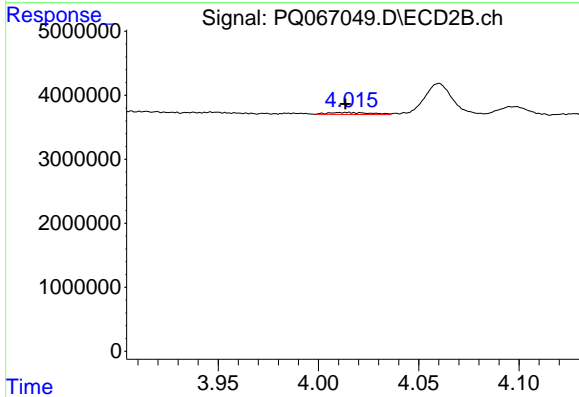
R.T.: 3.851 min
 Delta R.T.: 0.000 min
 Response: 273753
 Conc: 1.93 ng/ml



#13 AR-1232-3

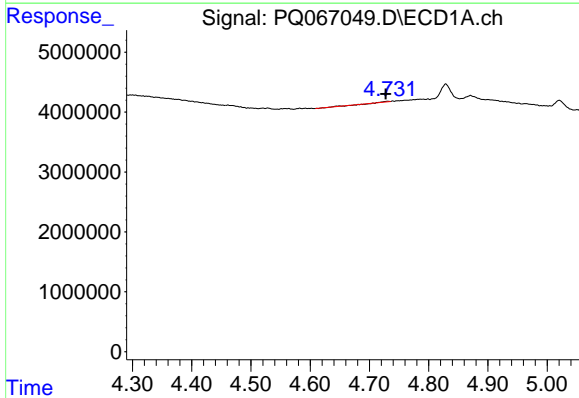
R.T.: 4.582 min
 Delta R.T.: 0.005 min
 Response: 64727
 Conc: 0.54 ng/ml

Instrument :
 ECD_Q
 ClientSampleId :
 BC274271-2-2



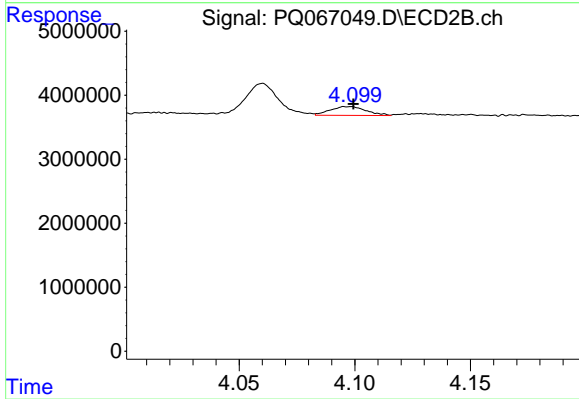
#13 AR-1232-3

R.T.: 4.015 min
 Delta R.T.: 0.002 min
 Response: 474650
 Conc: 6.10 ng/ml



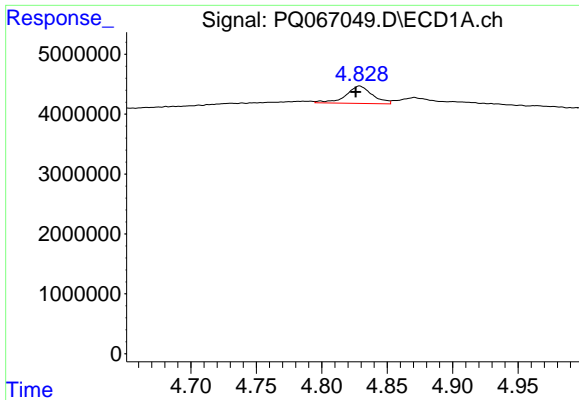
#14 AR-1232-4

R.T.: 4.731 min
 Delta R.T.: 0.003 min
 Response: 38824
 Conc: 0.68 ng/ml



#14 AR-1232-4

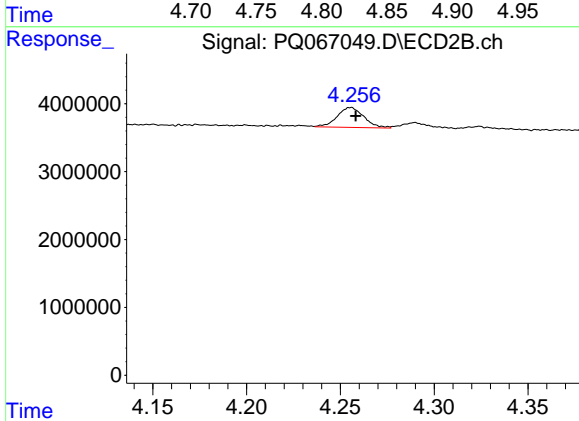
R.T.: 4.099 min
 Delta R.T.: 0.000 min
 Response: 1477278
 Conc: 22.22 ng/ml



#15 AR-1232-5

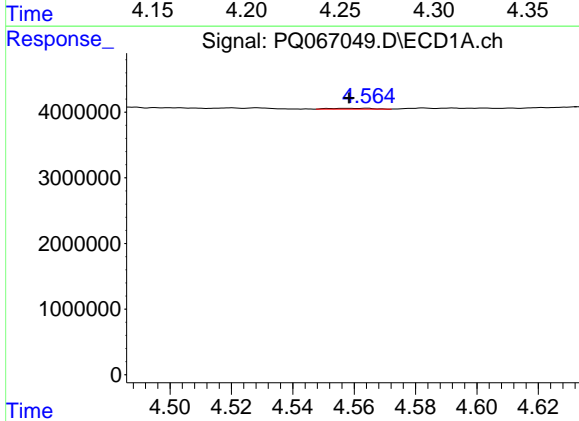
R.T.: 4.829 min
 Delta R.T.: 0.003 min
 Response: 4116924
 Conc: 102.91 ng/ml

Instrument :
 ECD_Q
 ClientSampleId :
 BC274271-2-2



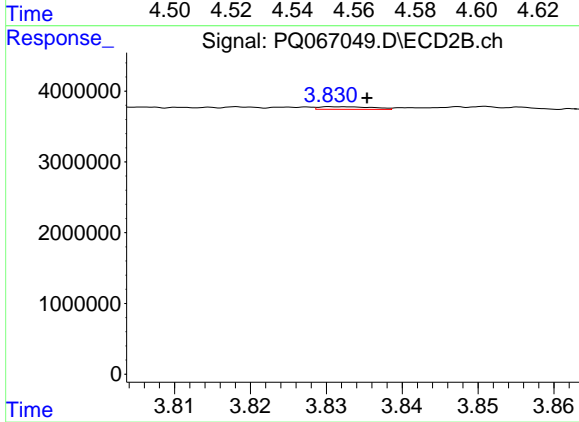
#15 AR-1232-5

R.T.: 4.256 min
 Delta R.T.: -0.002 min
 Response: 2907470
 Conc: 38.78 ng/ml



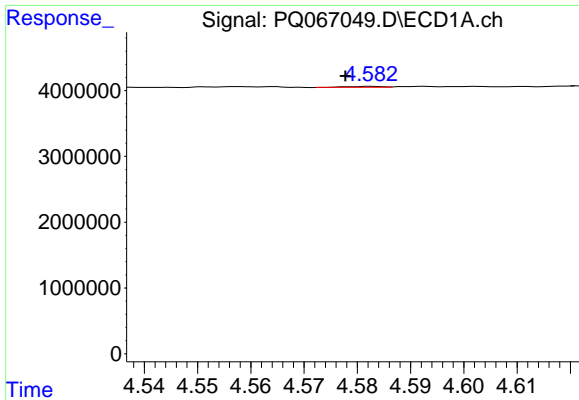
#16 AR-1242-1

R.T.: 4.564 min
 Delta R.T.: 0.005 min
 Response: 122136
 Conc: 0.86 ng/ml



#16 AR-1242-1

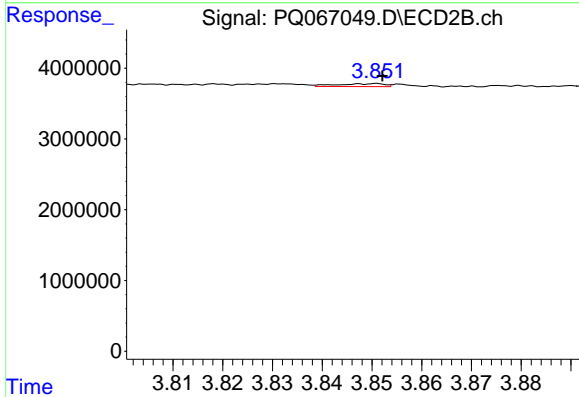
R.T.: 3.831 min
 Delta R.T.: -0.004 min
 Response: 180648
 Conc: 1.04 ng/ml



#17 AR-1242-2

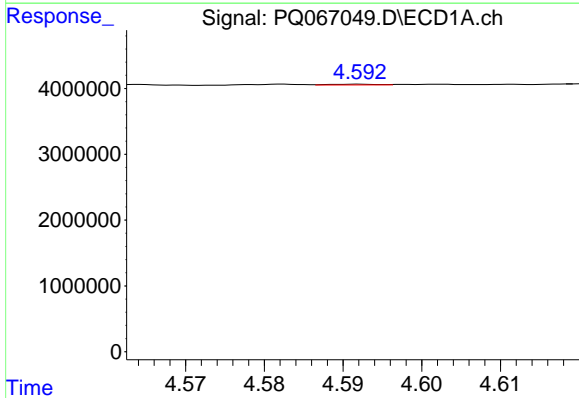
R.T.: 4.582 min
 Delta R.T.: 0.005 min
 Response: 64727
 Conc: 0.29 ng/ml

Instrument :
 ECD_Q
 ClientSampleId :
 BC274271-2-2



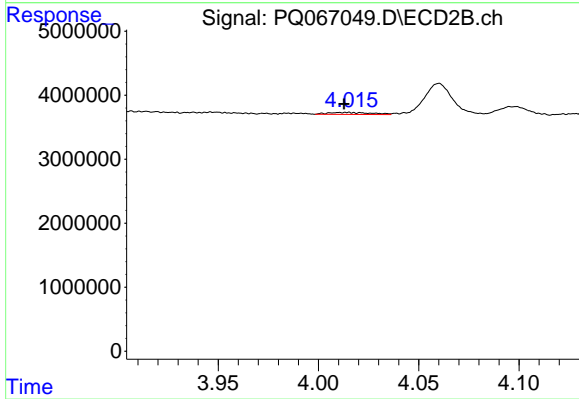
#17 AR-1242-2

R.T.: 3.851 min
 Delta R.T.: -0.001 min
 Response: 273753
 Conc: 1.10 ng/ml



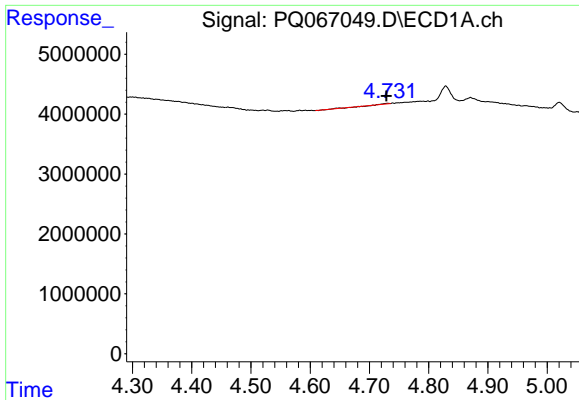
#18 AR-1242-3

R.T.: 4.592 min
 Delta R.T.: -0.044 min
 Response: 47646
 Conc: 0.35 ng/ml



#18 AR-1242-3

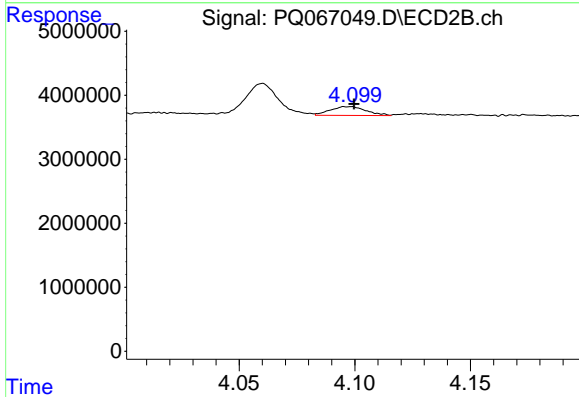
R.T.: 4.015 min
 Delta R.T.: 0.002 min
 Response: 474650
 Conc: 3.40 ng/ml



#19 AR-1242-4

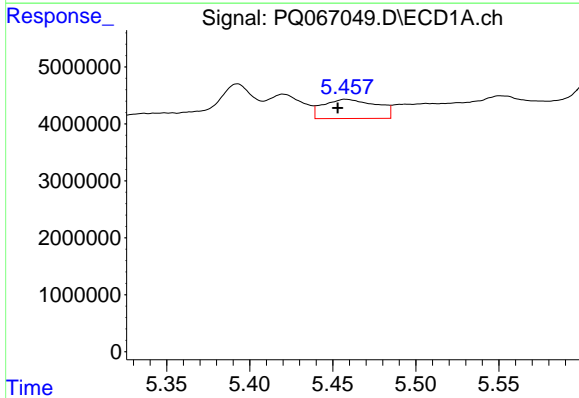
R.T.: 4.731 min
 Delta R.T.: 0.002 min
 Response: 38824
 Conc: 0.37 ng/ml

Instrument :
 ECD_Q
 ClientSampleId :
 BC274271-2-2



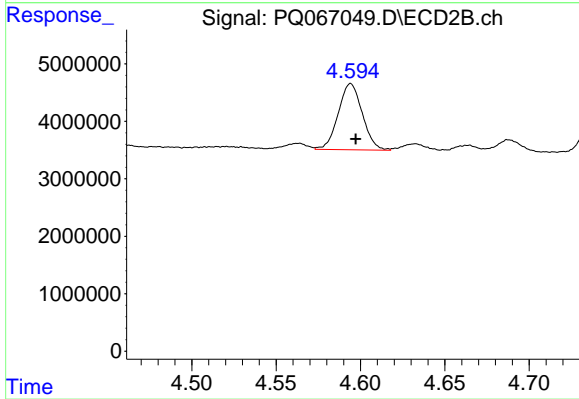
#19 AR-1242-4

R.T.: 4.099 min
 Delta R.T.: -0.001 min
 Response: 1477278
 Conc: 11.31 ng/ml



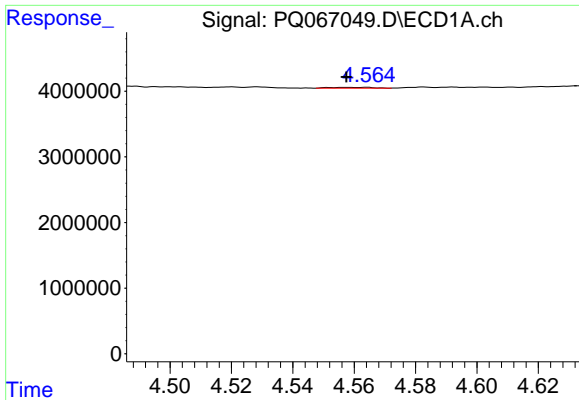
#20 AR-1242-5

R.T.: 5.458 min
 Delta R.T.: 0.005 min
 Response: 7547884
 Conc: 66.08 ng/ml



#20 AR-1242-5

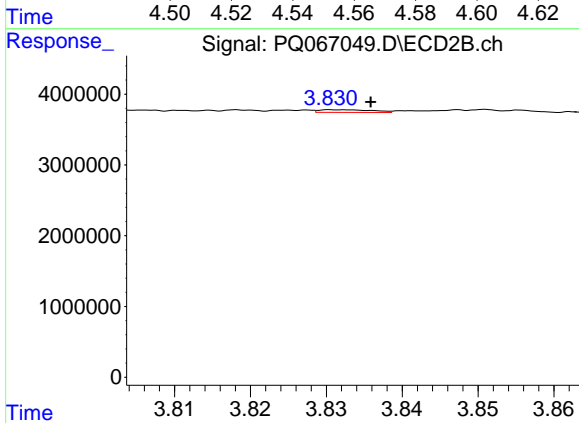
R.T.: 4.594 min
 Delta R.T.: -0.003 min
 Response: 11441764
 Conc: 68.92 ng/ml



#21 AR-1248-1

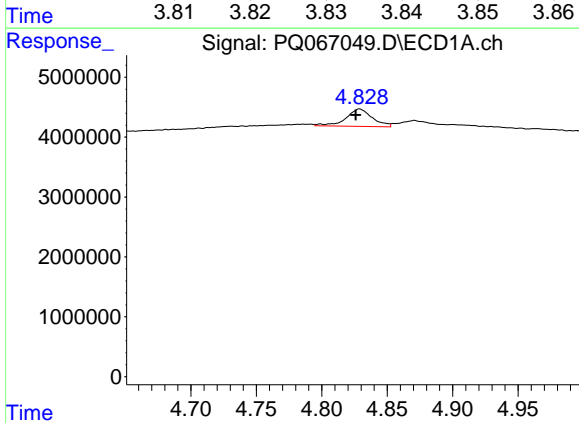
R.T.: 4.564 min
 Delta R.T.: 0.006 min
 Response: 122136
 Conc: 1.16 ng/ml

Instrument :
 ECD_Q
 ClientSampleId :
 BC274271-2-2



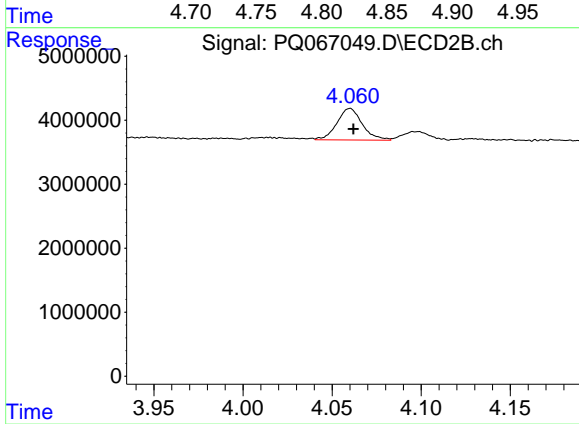
#21 AR-1248-1

R.T.: 3.831 min
 Delta R.T.: -0.005 min
 Response: 180648
 Conc: 1.41 ng/ml



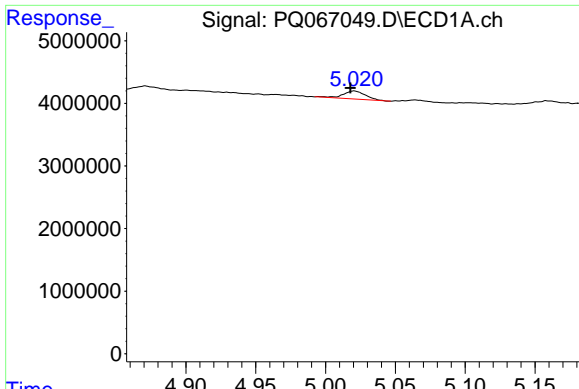
#22 AR-1248-2

R.T.: 4.829 min
 Delta R.T.: 0.003 min
 Response: 4116924
 Conc: 28.08 ng/ml



#22 AR-1248-2

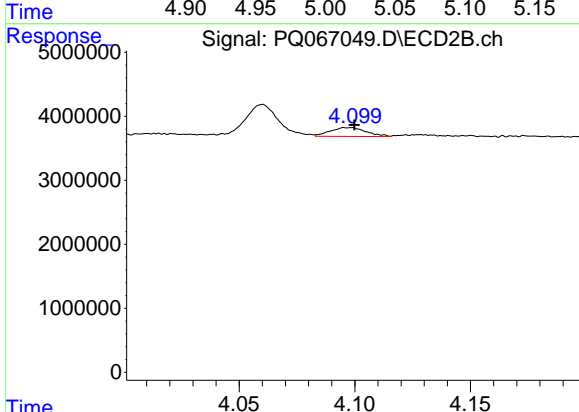
R.T.: 4.060 min
 Delta R.T.: -0.002 min
 Response: 4862974
 Conc: 25.37 ng/ml



#23 AR-1248-3

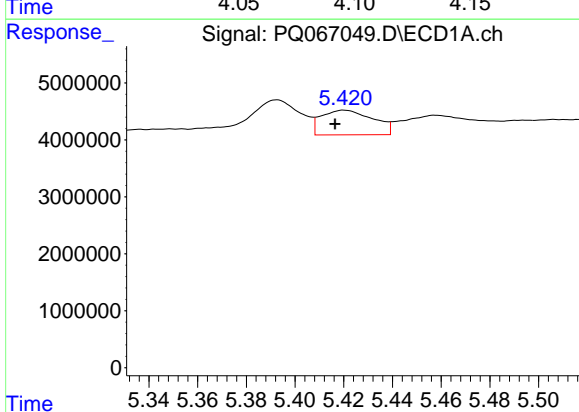
R.T.: 5.021 min
 Delta R.T.: 0.003 min
 Response: 1411860
 Conc: 8.08 ng/ml

Instrument :
 ECD_Q
 ClientSampleId :
 BC274271-2-2



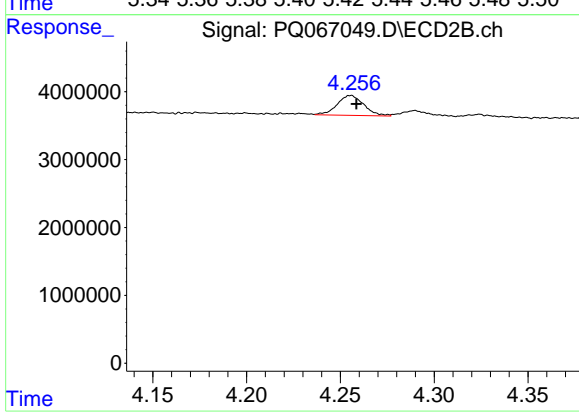
#23 AR-1248-3

R.T.: 4.099 min
 Delta R.T.: -0.001 min
 Response: 1477278
 Conc: 8.03 ng/ml



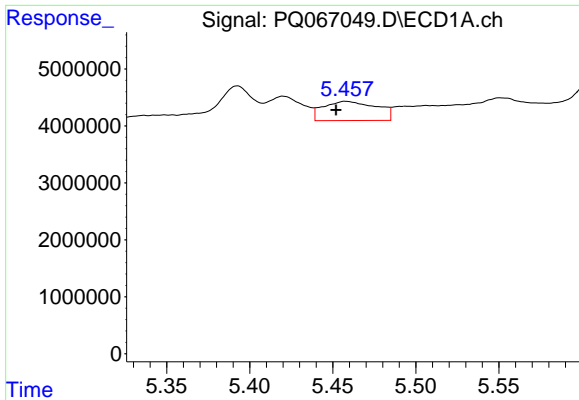
#24 AR-1248-4

R.T.: 5.420 min
 Delta R.T.: 0.004 min
 Response: 6393860
 Conc: 32.60 ng/ml



#24 AR-1248-4

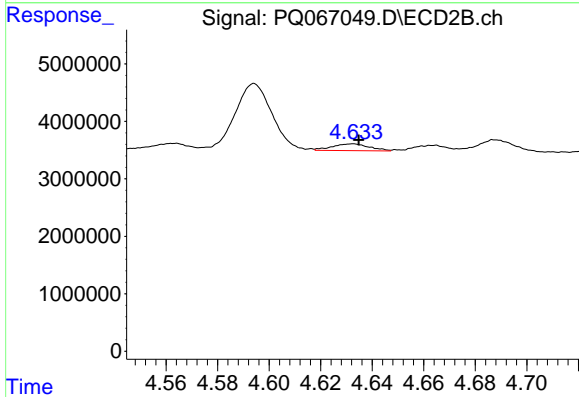
R.T.: 4.256 min
 Delta R.T.: -0.003 min
 Response: 2907470
 Conc: 12.89 ng/ml



#25 AR-1248-5

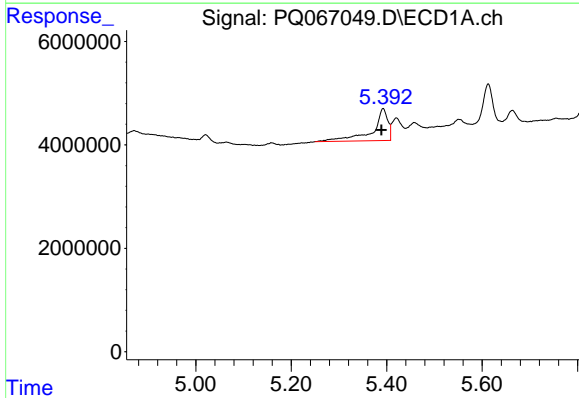
R.T.: 5.458 min
 Delta R.T.: 0.006 min
 Response: 7547884
 Conc: 37.97 ng/ml

Instrument :
 ECD_Q
 ClientSampleId :
 BC274271-2-2



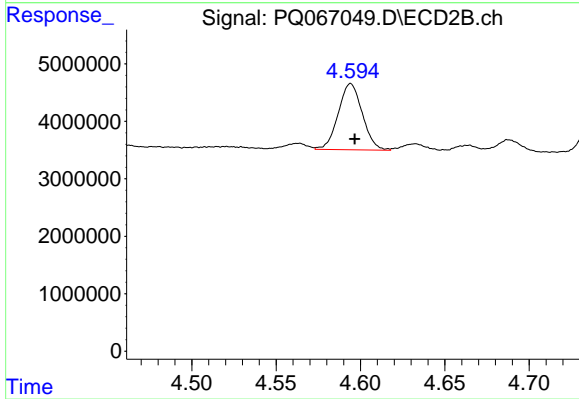
#25 AR-1248-5

R.T.: 4.633 min
 Delta R.T.: -0.002 min
 Response: 1161315
 Conc: 5.43 ng/ml



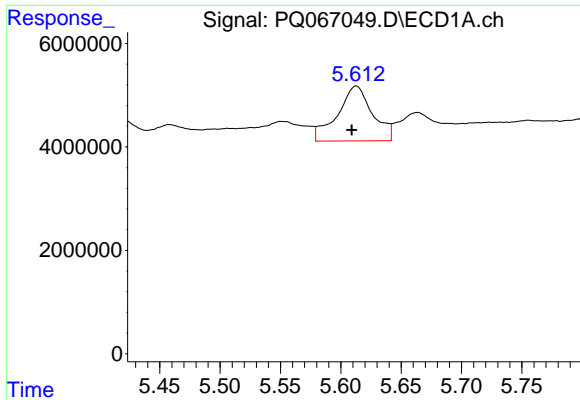
#26 AR-1254-1

R.T.: 5.393 min
 Delta R.T.: 0.004 min
 Response: 13819659
 Conc: 66.69 ng/ml



#26 AR-1254-1

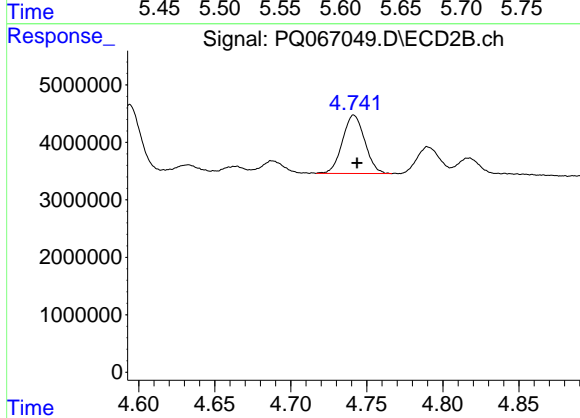
R.T.: 4.594 min
 Delta R.T.: -0.002 min
 Response: 11441764
 Conc: 34.12 ng/ml



#27 AR-1254-2

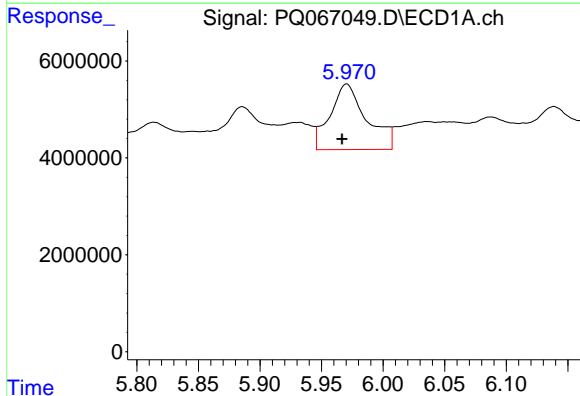
R.T.: 5.613 min
 Delta R.T.: 0.004 min
 Response: 21418967
 Conc: 66.39 ng/ml

Instrument :
 ECD_Q
 ClientSampleId :
 BC274271-2-2



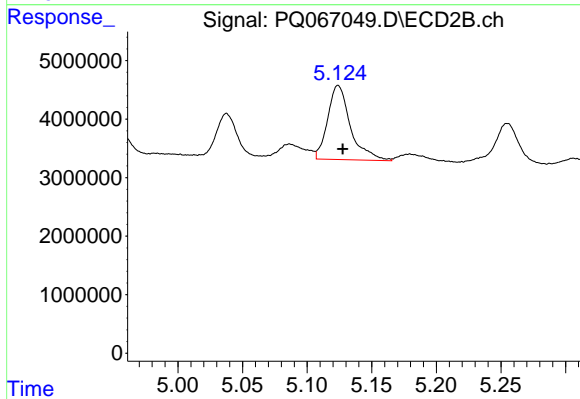
#27 AR-1254-2

R.T.: 4.742 min
 Delta R.T.: -0.002 min
 Response: 10364078
 Conc: 35.90 ng/ml



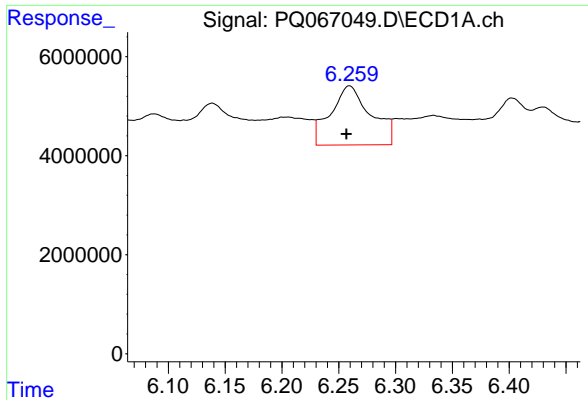
#28 AR-1254-3

R.T.: 5.970 min
 Delta R.T.: 0.004 min
 Response: 27889564
 Conc: 82.17 ng/ml



#28 AR-1254-3

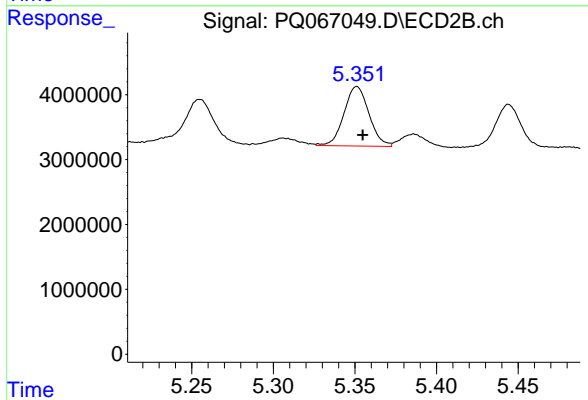
R.T.: 5.124 min
 Delta R.T.: -0.003 min
 Response: 15555892
 Conc: 33.46 ng/ml



#29 AR-1254-4

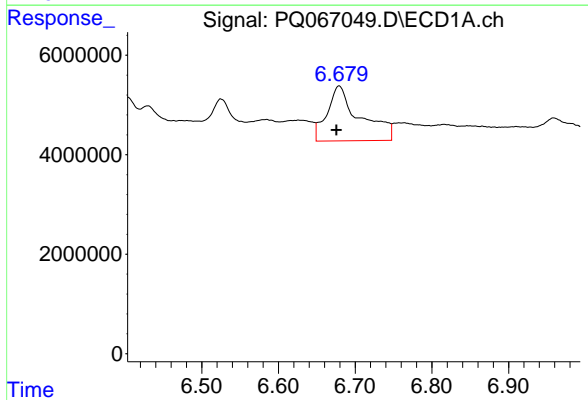
R.T.: 6.259 min
 Delta R.T.: 0.003 min
 Response: 29505586
 Conc: 125.33 ng/ml

Instrument :
 ECD_Q
 ClientSampleId :
 BC274271-2-2



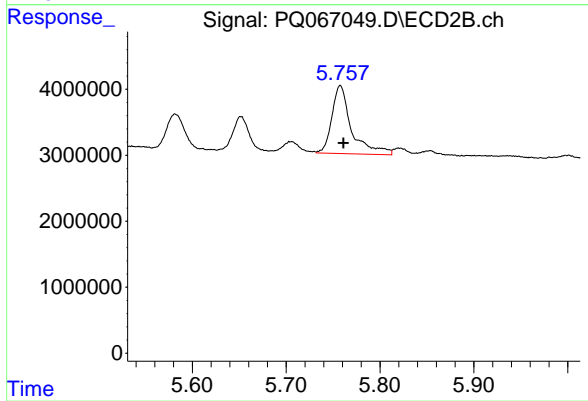
#29 AR-1254-4

R.T.: 5.351 min
 Delta R.T.: -0.003 min
 Response: 9801760
 Conc: 35.18 ng/ml



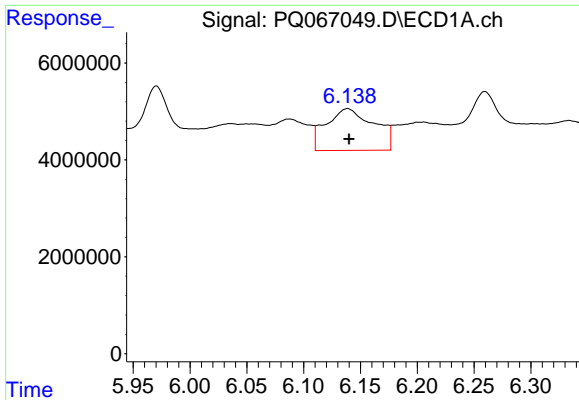
#30 AR-1254-5

R.T.: 6.679 min
 Delta R.T.: 0.004 min
 Response: 32813041
 Conc: 123.84 ng/ml



#30 AR-1254-5

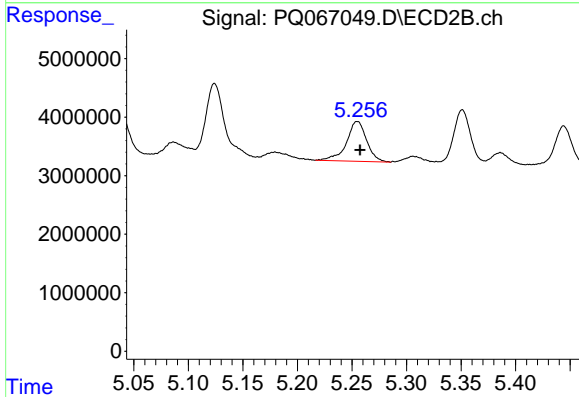
R.T.: 5.758 min
 Delta R.T.: -0.003 min
 Response: 14948702
 Conc: 35.67 ng/ml



#31 AR-1260-1

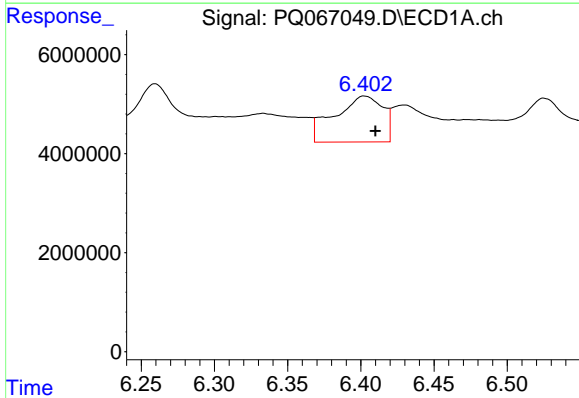
R.T.: 6.139 min
 Delta R.T.: -0.001 min
 Response: 25305685
 Conc: 98.14 ng/ml

Instrument :
 ECD_Q
 ClientSampleId :
 BC274271-2-2



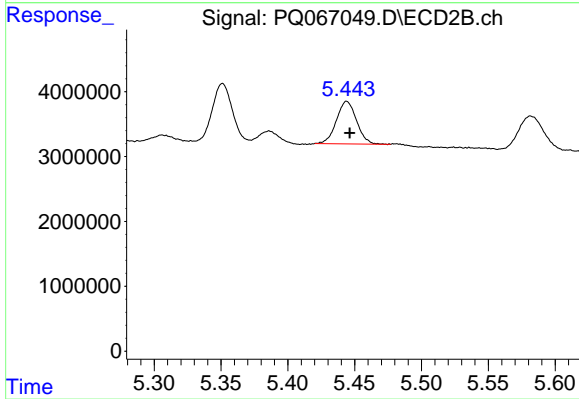
#31 AR-1260-1

R.T.: 5.255 min
 Delta R.T.: -0.002 min
 Response: 8786682
 Conc: 26.54 ng/ml



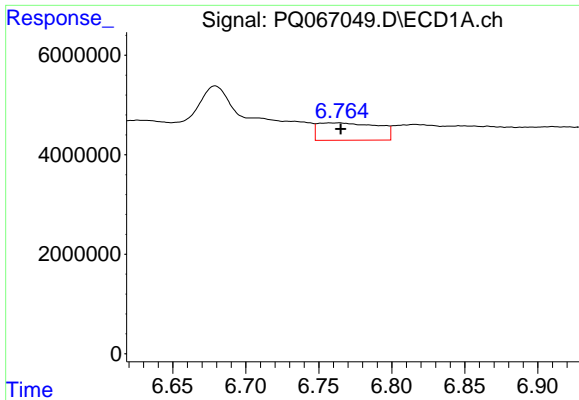
#32 AR-1260-2

R.T.: 6.402 min
 Delta R.T.: -0.008 min
 Response: 21241336
 Conc: 69.88 ng/ml



#32 AR-1260-2

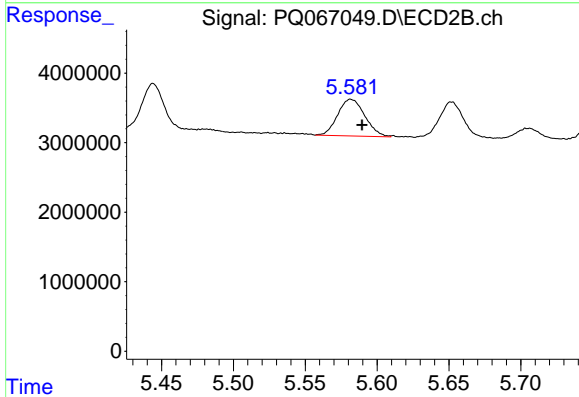
R.T.: 5.444 min
 Delta R.T.: -0.002 min
 Response: 6862582
 Conc: 17.56 ng/ml



#33 AR-1260-3

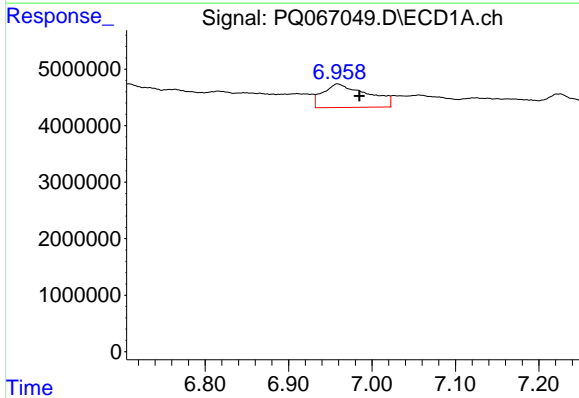
R.T.: 6.764 min
 Delta R.T.: -0.001 min
 Response: 9977791
 Conc: 45.09 ng/ml

Instrument :
 ECD_Q
 ClientSampleId :
 BC274271-2-2



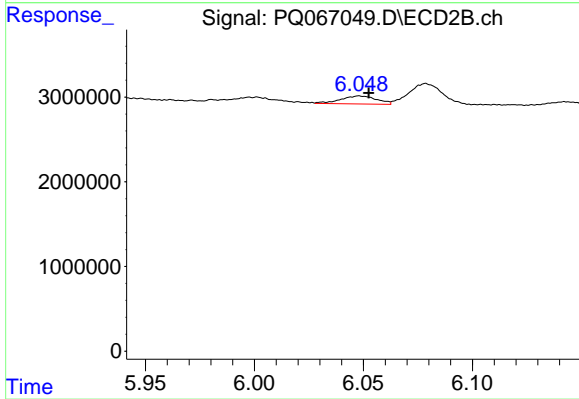
#33 AR-1260-3

R.T.: 5.582 min
 Delta R.T.: -0.008 min
 Response: 6914684
 Conc: 18.25 ng/ml



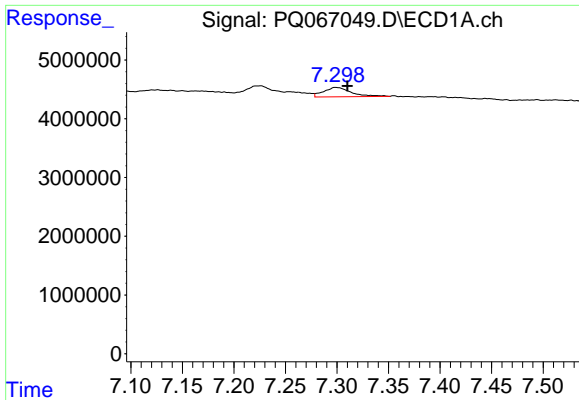
#34 AR-1260-4

R.T.: 6.959 min
 Delta R.T.: -0.026 min
 Response: 15414661
 Conc: 63.63 ng/ml



#34 AR-1260-4

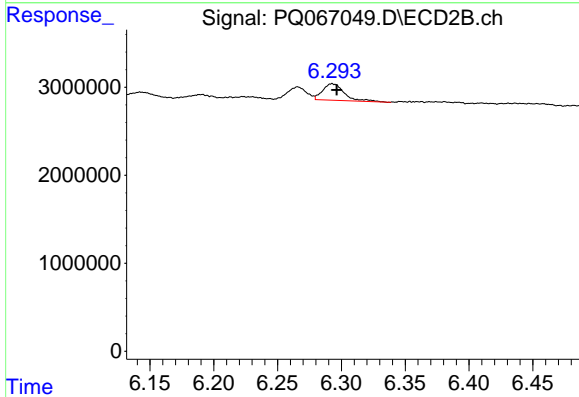
R.T.: 6.048 min
 Delta R.T.: -0.004 min
 Response: 1088452
 Conc: 3.46 ng/ml



#35 AR-1260-5

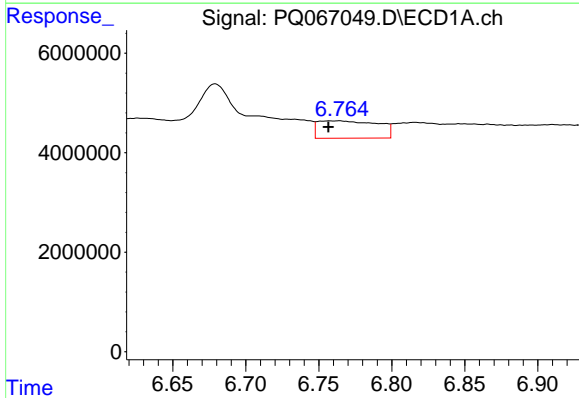
R.T.: 7.299 min
 Delta R.T.: -0.011 min
 Response: 2997827
 Conc: 6.13 ng/ml

Instrument :
 ECD_Q
 ClientSampleId :
 BC274271-2-2



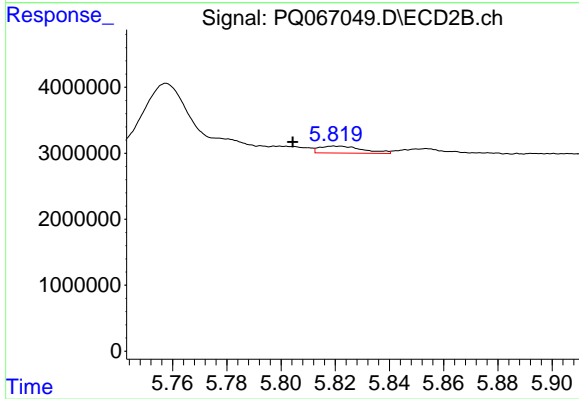
#35 AR-1260-5

R.T.: 6.293 min
 Delta R.T.: -0.004 min
 Response: 2212819
 Conc: 3.35 ng/ml



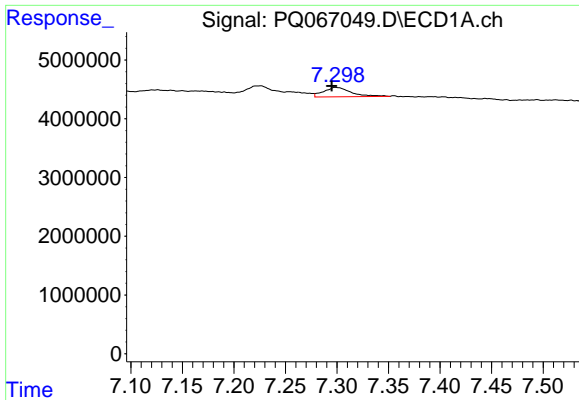
#36 AR-1262-1

R.T.: 6.764 min
 Delta R.T.: 0.007 min
 Response: 9977791
 Conc: 30.18 ng/ml



#36 AR-1262-1

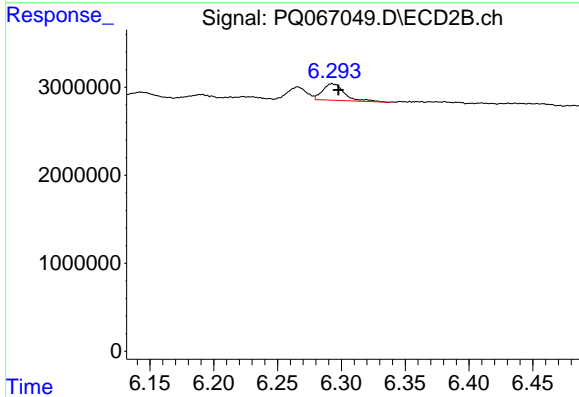
R.T.: 5.820 min
 Delta R.T.: 0.015 min
 Response: 1178109
 Conc: 2.73 ng/ml



#37 AR-1262-2

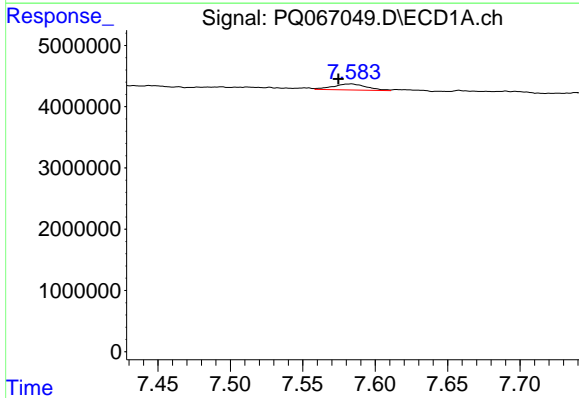
R.T.: 7.299 min
 Delta R.T.: 0.004 min
 Response: 2997827
 Conc: 5.60 ng/ml

Instrument :
 ECD_Q
 ClientSampleId :
 BC274271-2-2



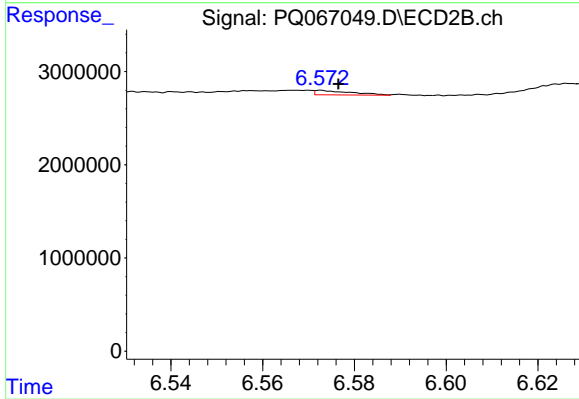
#37 AR-1262-2

R.T.: 6.293 min
 Delta R.T.: -0.005 min
 Response: 2212819
 Conc: 3.04 ng/ml



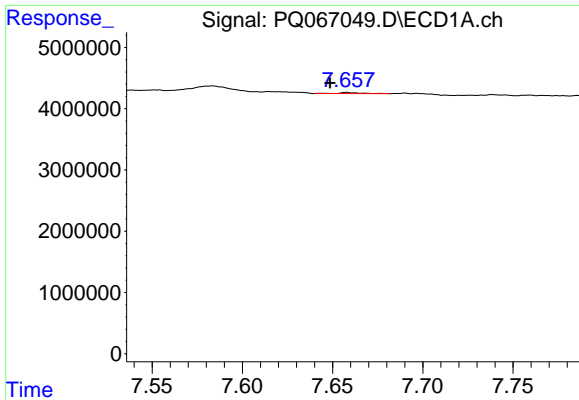
#38 AR-1262-3

R.T.: 7.583 min
 Delta R.T.: 0.009 min
 Response: 1595415
 Conc: 4.54 ng/ml



#38 AR-1262-3

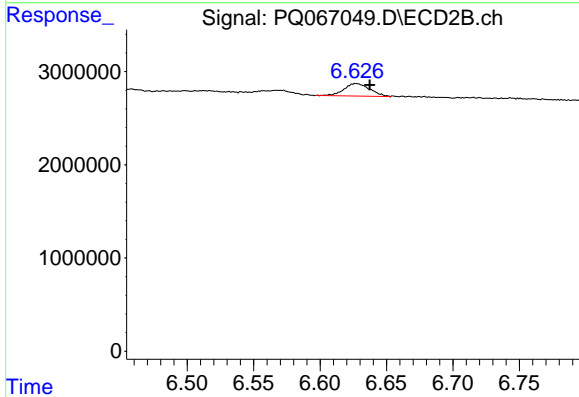
R.T.: 6.573 min
 Delta R.T.: -0.004 min
 Response: 264165
 Conc: 0.85 ng/ml



#39 AR-1262-4

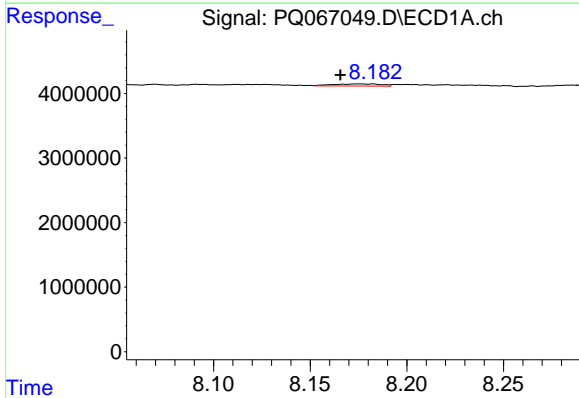
R.T.: 7.658 min
 Delta R.T.: 0.009 min
 Response: 155951
 Conc: 0.58 ng/ml

Instrument :
 ECD_Q
 ClientSampleId :
 BC274271-2-2



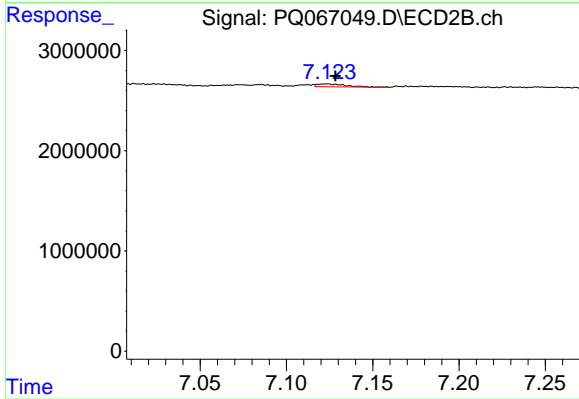
#39 AR-1262-4

R.T.: 6.627 min
 Delta R.T.: -0.011 min
 Response: 1833659
 Conc: 3.22 ng/ml



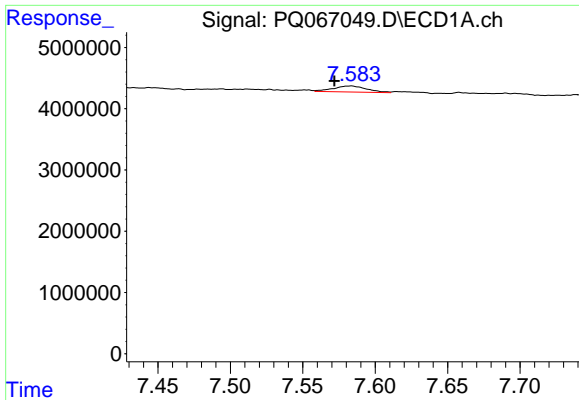
#40 AR-1262-5

R.T.: 8.175 min
 Delta R.T.: 0.010 min
 Response: 564024
 Conc: 3.37 ng/ml



#40 AR-1262-5

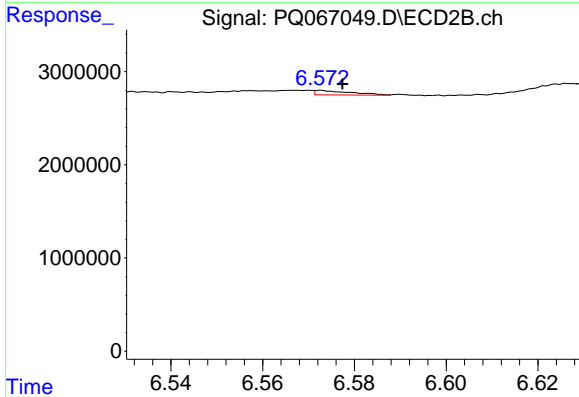
R.T.: 7.124 min
 Delta R.T.: -0.004 min
 Response: 337830
 Conc: 1.30 ng/ml



#41 AR-1268-1

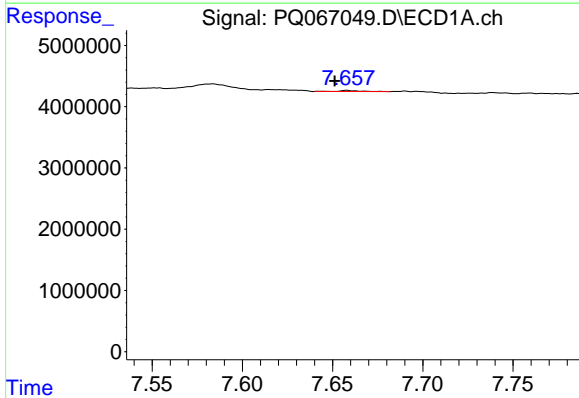
R.T.: 7.583 min
 Delta R.T.: 0.012 min
 Response: 1595415
 Conc: 2.66 ng/ml

Instrument :
 ECD_Q
 ClientSampleId :
 BC274271-2-2



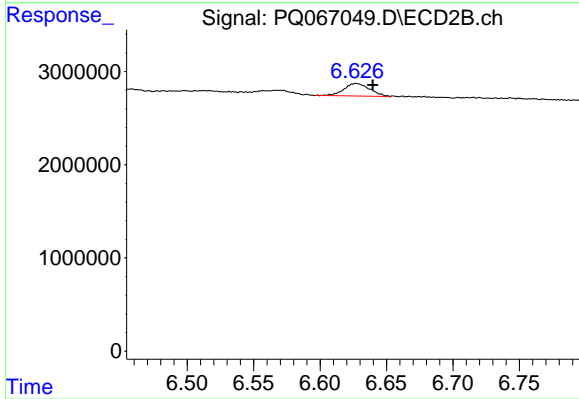
#41 AR-1268-1

R.T.: 6.573 min
 Delta R.T.: -0.005 min
 Response: 264165
 Conc: 0.30 ng/ml



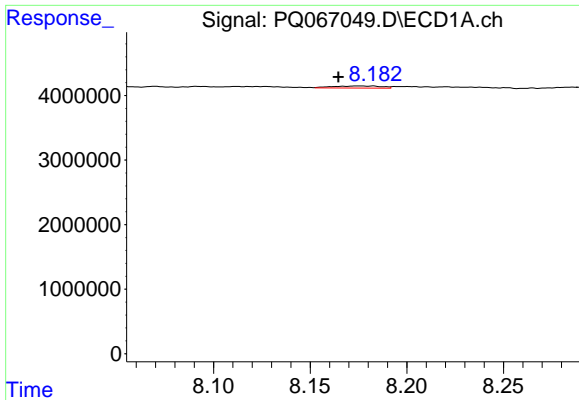
#42 AR-1268-2

R.T.: 7.658 min
 Delta R.T.: 0.007 min
 Response: 155951
 Conc: 0.29 ng/ml



#42 AR-1268-2

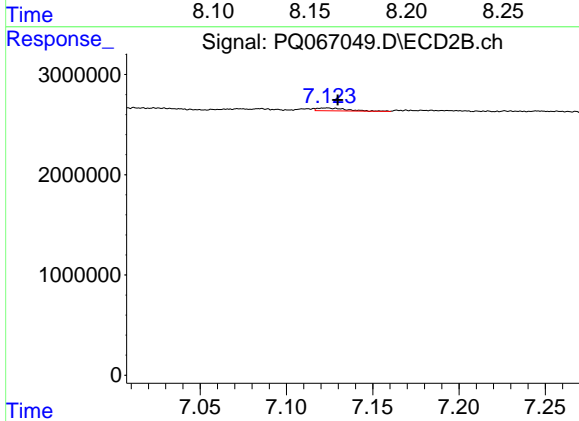
R.T.: 6.627 min
 Delta R.T.: -0.013 min
 Response: 1833659
 Conc: 2.29 ng/ml



#44 AR-1268-4

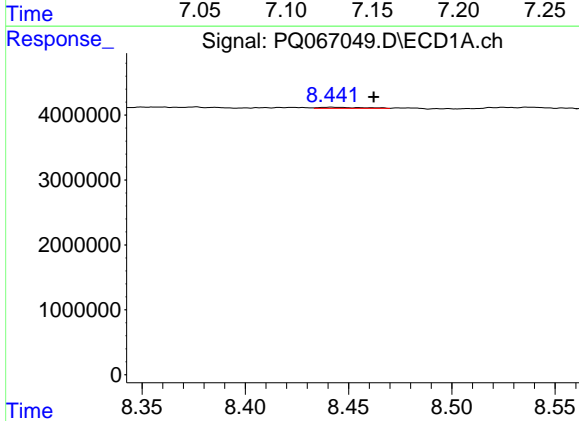
R.T.: 8.175 min
 Delta R.T.: 0.011 min
 Response: 564024
 Conc: 3.20 ng/ml

Instrument :
 ECD_Q
 ClientSampleId :
 BC274271-2-2



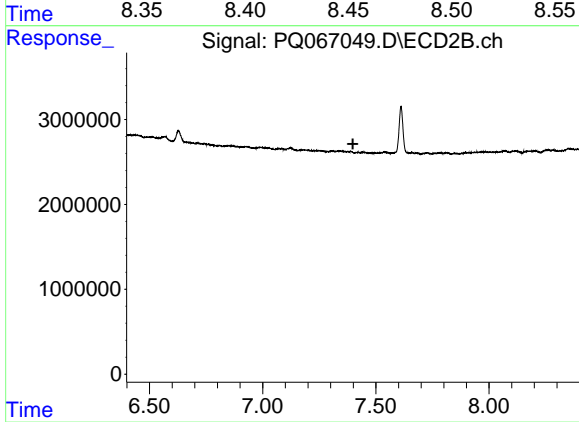
#44 AR-1268-4

R.T.: 7.124 min
 Delta R.T.: -0.006 min
 Response: 337830
 Conc: 1.19 ng/ml



#45 AR-1268-5

R.T.: 8.442 min
 Delta R.T.: -0.020 min
 Response: 232960
 Conc: 0.17 ng/ml



#45 AR-1268-5

R.T.: 0.000 min
 Exp R.T. : 7.398 min
 Response: 0
 Conc: N.D.