

Data Path : Z:\pestpcbsrv\HPCHEM1\ECD\_Q\Data\PQ062024\  
 Data File : PQ067096.D  
 Signal(s) : Signal #1: ECD1A.ch Signal #2: ECD2B.ch  
 Acq On : 20 Jun 2024 19:03  
 Operator : YP\AJ  
 Sample : AR1268ICC750  
 Misc :  
 ALS Vial : 27 Sample Multiplier: 1

Instrument :  
 ECD\_Q  
 ClientSampleId :  
 AR1268ICC750

Integration File signal 1: autoint1.e  
 Integration File signal 2: autoint2.e  
 Quant Time: Jun 21 02:55:59 2024  
 Quant Method : Z:\pestpcbsrv\HPCHEM1\ECD\_Q\Method\PQ062024.M  
 Quant Title : GC EXTRACTABLES  
 QLast Update : Fri Jun 21 02:49:43 2024  
 Response via : Initial Calibration  
 Integrator: ChemStation

Volume Inj. : 2 µl  
 Signal #1 Phase : ZB-MR1 Signal #2 Phase: ZB-MR2  
 Signal #1 Info : 30Mx0.32mmx 0.50µ Signal #2 Info : 30M x 0.32mm x 0.25µm

Compound	RT#1	RT#2	Resp#1	Resp#2	ng/ml	ng/ml
-----						
System Monitoring Compounds						
1) SA Tetrachlo...	3.451	2.824	601.0E6	455.5E6	74.932	74.807
2) SA Decachlor...	8.709	7.608	628.7E6	712.4E6	75.225	74.899
Target Compounds						
41) L9 AR-1268-1	7.579	6.571	598.5E6	635.8E6	749.605	744.520
42) L9 AR-1268-2	7.659	6.634	541.4E6	585.8E6	750.181	750.979
43) L9 AR-1268-3	7.844	6.835	454.5E6	509.4E6	749.632	750.786
44) L9 AR-1268-4	8.174	7.122	186.9E6	214.5E6	751.336	748.372
45) L9 AR-1268-5	8.472	7.391	1304.9E6	1532.3E6	754.230	749.660
-----						

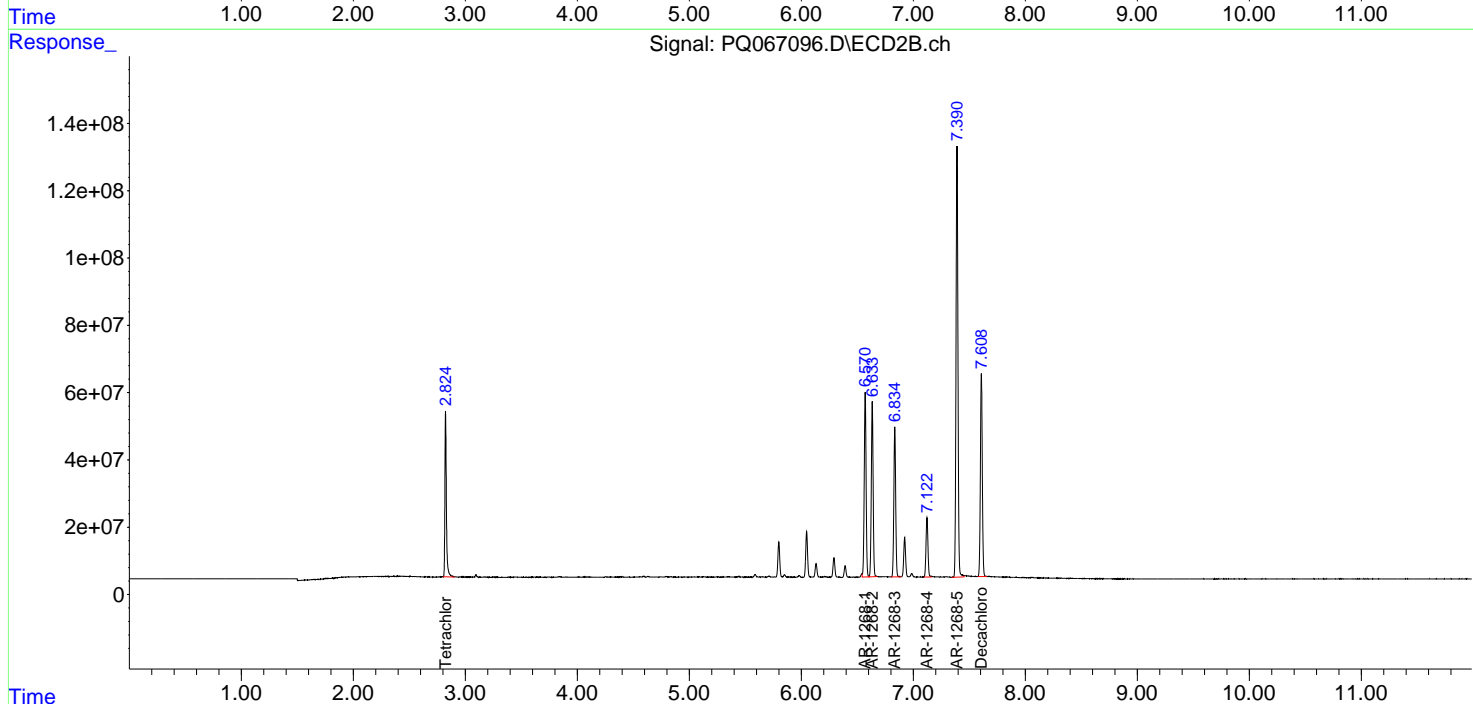
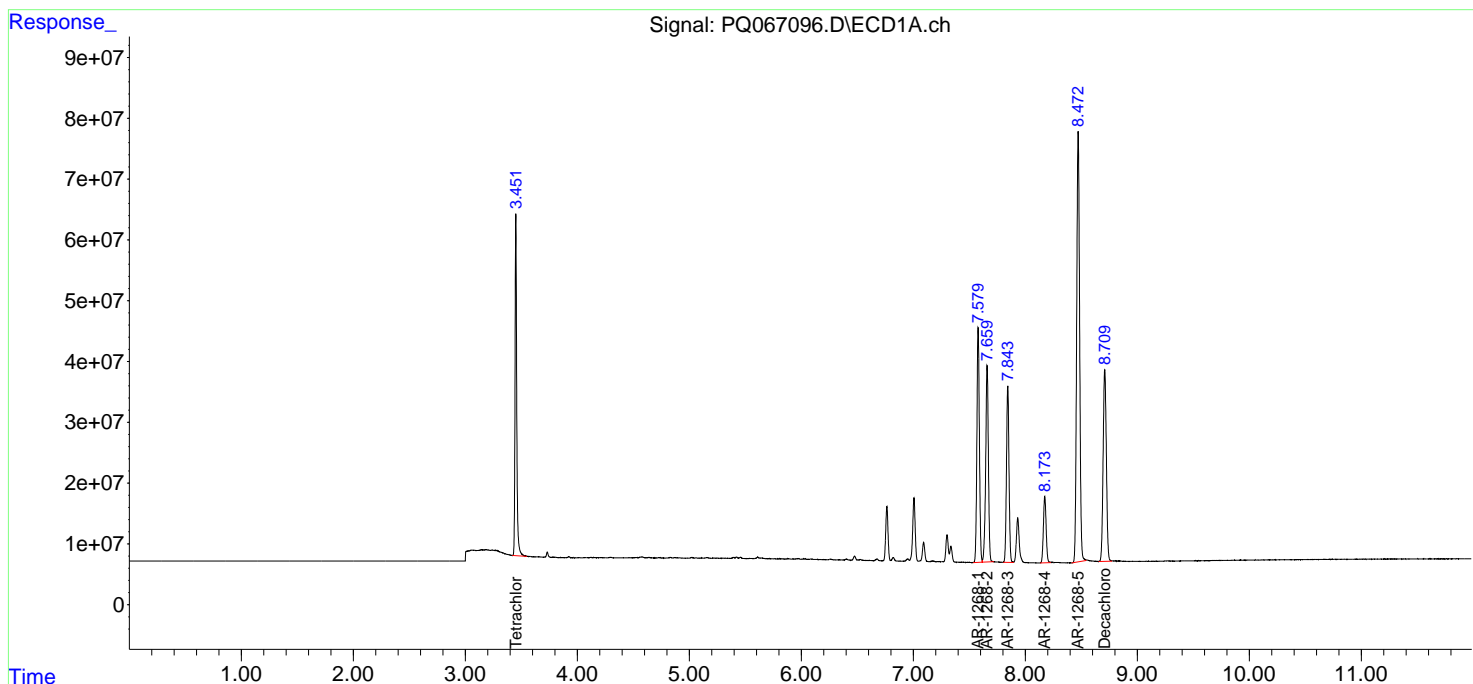
(f)=RT Delta > 1/2 Window (#)=Amounts differ by > 25% (m)=manual int.

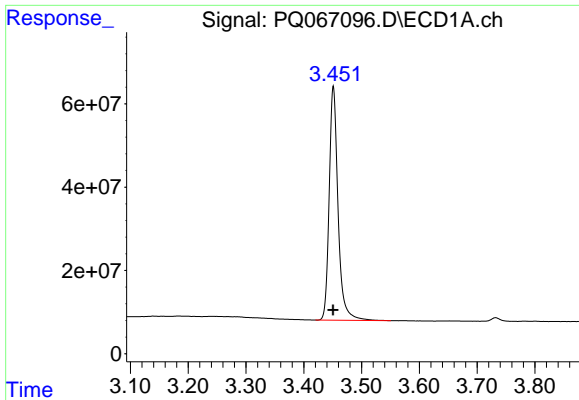
Data Path : Z:\pestpcbsrv\HPCHEM1\ECD\_Q\Data\PQ062024\  
 Data File : PQ067096.D  
 Signal(s) : Signal #1: ECD1A.ch Signal #2: ECD2B.ch  
 Acq On : 20 Jun 2024 19:03  
 Operator : YP\AJ  
 Sample : AR1268ICC750  
 Misc :  
 ALS Vial : 27 Sample Multiplier: 1

Instrument :  
 ECD\_Q  
 ClientSampleId :  
 AR1268ICC750

Integration File signal 1: autoint1.e  
 Integration File signal 2: autoint2.e  
 Quant Time: Jun 21 02:55:59 2024  
 Quant Method : Z:\pestpcbsrv\HPCHEM1\ECD\_Q\Method\PQ062024.M  
 Quant Title : GC EXTRACTABLES  
 QLast Update : Fri Jun 21 02:49:43 2024  
 Response via : Initial Calibration  
 Integrator: ChemStation

Volume Inj. : 2 µl  
 Signal #1 Phase : ZB-MR1 Signal #2 Phase: ZB-MR2  
 Signal #1 Info : 30Mx0.32mmx 0.50µ Signal #2 Info : 30M x 0.32mm x 0.25µm

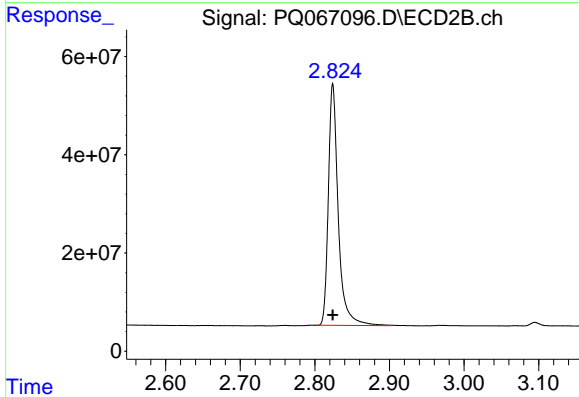




#1 Tetrachloro-m-xylene

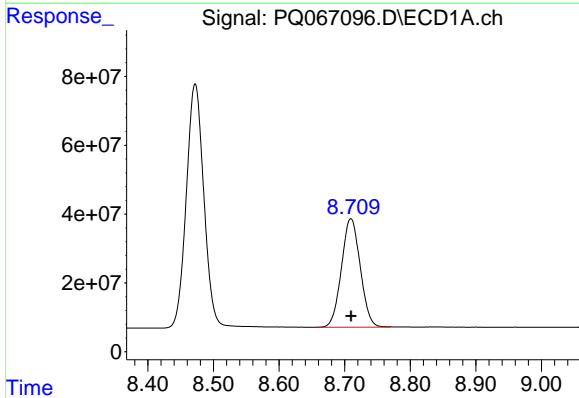
R.T.: 3.451 min  
 Delta R.T.: 0.000 min  
 Response: 600998004  
 Conc: 74.93 ng/ml

Instrument :  
 ECD\_Q  
 ClientSampleId :  
 AR1268ICC750



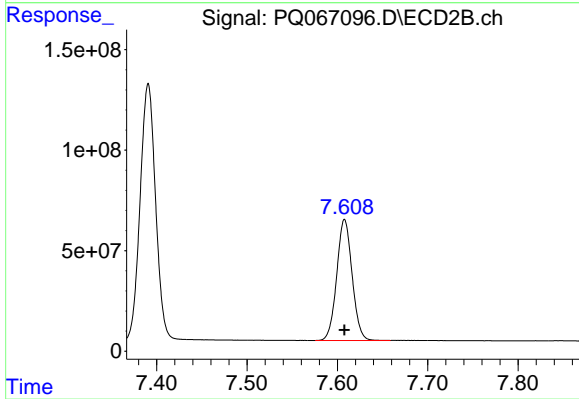
#1 Tetrachloro-m-xylene

R.T.: 2.824 min  
 Delta R.T.: 0.000 min  
 Response: 455505777  
 Conc: 74.81 ng/ml



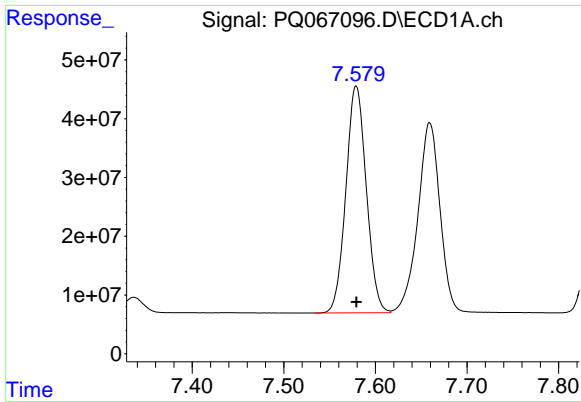
#2 Decachlorobiphenyl

R.T.: 8.709 min  
 Delta R.T.: 0.000 min  
 Response: 628664253  
 Conc: 75.22 ng/ml



#2 Decachlorobiphenyl

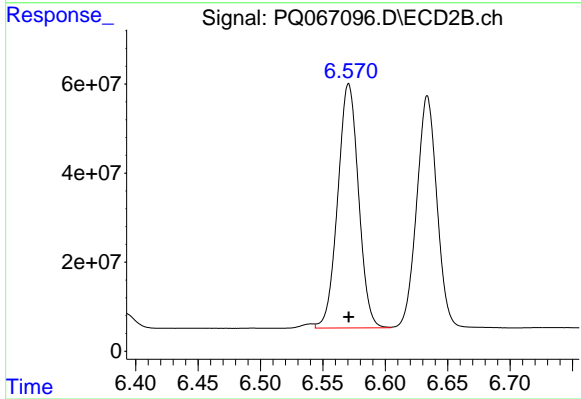
R.T.: 7.608 min  
 Delta R.T.: 0.000 min  
 Response: 712398332  
 Conc: 74.90 ng/ml



#41 AR-1268-1

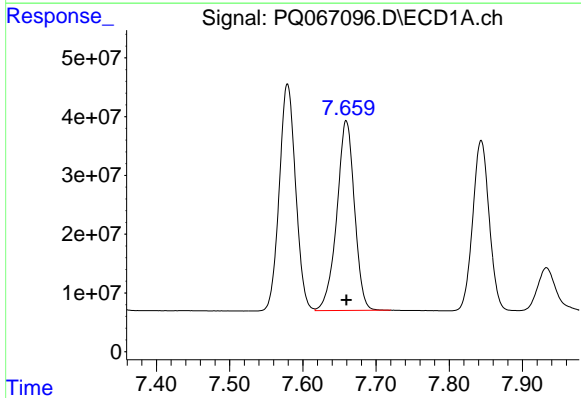
R.T.: 7.579 min  
 Delta R.T.: 0.000 min  
 Response: 598483188  
 Conc: 749.60 ng/ml

Instrument :  
 ECD\_Q  
 ClientSampleId :  
 AR1268ICC750



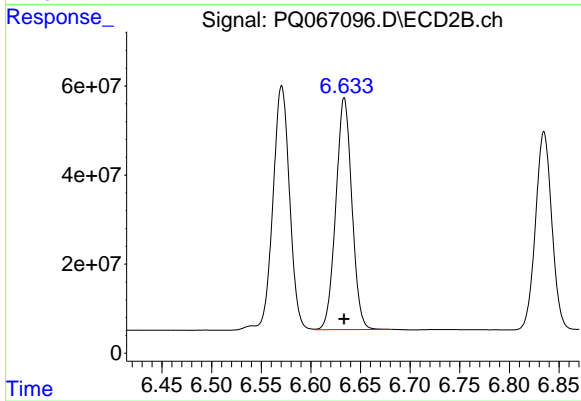
#41 AR-1268-1

R.T.: 6.571 min  
 Delta R.T.: 0.000 min  
 Response: 635812105  
 Conc: 744.52 ng/ml



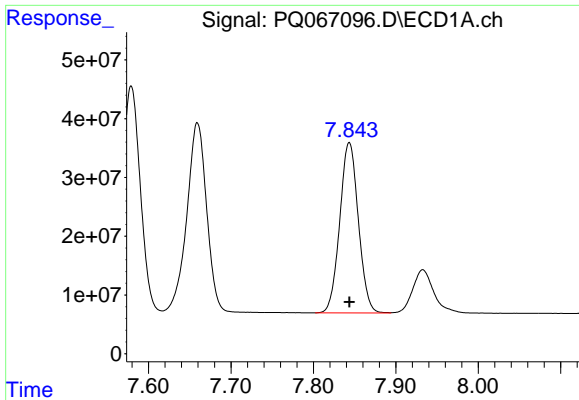
#42 AR-1268-2

R.T.: 7.659 min  
 Delta R.T.: 0.000 min  
 Response: 541385664  
 Conc: 750.18 ng/ml



#42 AR-1268-2

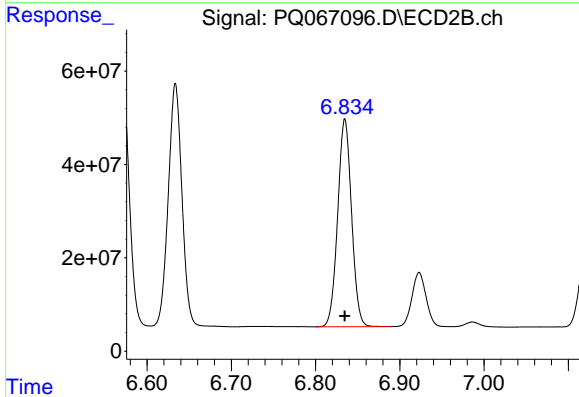
R.T.: 6.634 min  
 Delta R.T.: 0.000 min  
 Response: 585842202  
 Conc: 750.98 ng/ml



#43 AR-1268-3

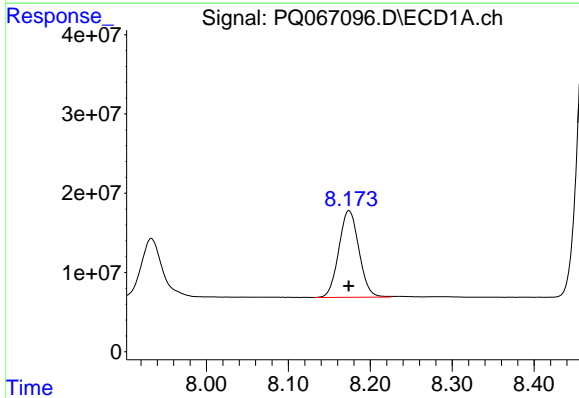
R.T.: 7.844 min  
 Delta R.T.: 0.000 min  
 Response: 454520072  
 Conc: 749.63 ng/ml

Instrument :  
 ECD\_Q  
 ClientSampleId :  
 AR1268ICC750



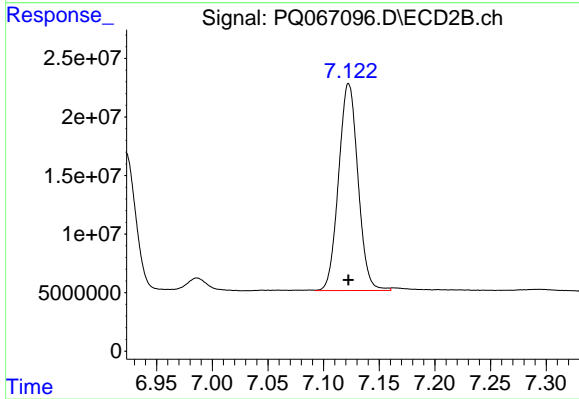
#43 AR-1268-3

R.T.: 6.835 min  
 Delta R.T.: 0.000 min  
 Response: 509429780  
 Conc: 750.79 ng/ml



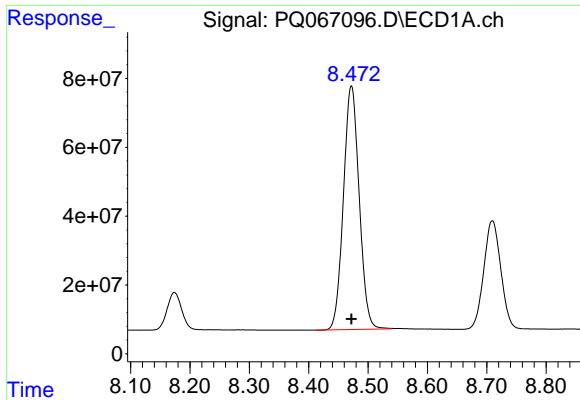
#44 AR-1268-4

R.T.: 8.174 min  
 Delta R.T.: 0.000 min  
 Response: 186874490  
 Conc: 751.34 ng/ml



#44 AR-1268-4

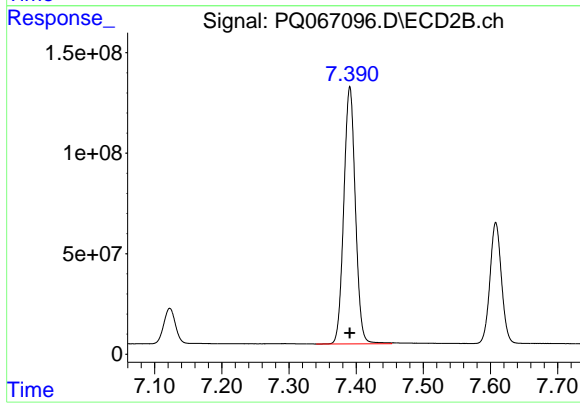
R.T.: 7.122 min  
 Delta R.T.: 0.000 min  
 Response: 214515347  
 Conc: 748.37 ng/ml



#45 AR-1268-5

R.T.: 8.472 min  
Delta R.T.: 0.000 min  
Response: 1304931982  
Conc: 754.23 ng/ml

Instrument :  
ECD\_Q  
ClientSampleId :  
AR1268ICC750



#45 AR-1268-5

R.T.: 7.391 min  
Delta R.T.: 0.000 min  
Response: 1532347685  
Conc: 749.66 ng/ml