

Data Path : Z:\pestpcbsrv\HPCHEM1\ECD_Q\Data\PQ062524\
 Data File : PQ067162.D
 Signal(s) : Signal #1: ECD1A.ch Signal #2: ECD2B.ch
 Acq On : 25 Jun 2024 14:02
 Operator : YP\AJ
 Sample : P3005-09
 Misc :
 ALS Vial : 5 Sample Multiplier: 1

Instrument :
 ECD_Q
 ClientSampleId :
 PCB-GPC-BLANK-SPIKE

Integration File signal 1: autoint1.e
 Integration File signal 2: autoint2.e
 Quant Time: Jun 26 01:37:49 2024
 Quant Method : Z:\pestpcbsrv\HPCHEM1\ECD_Q\Method\PQ053024CLP.M
 Quant Title : GC EXTRACTABLES
 QLast Update : Fri May 31 07:30:35 2024
 Response via : Initial Calibration
 Integrator: ChemStation

Volume Inj. : 1 µl
 Signal #1 Phase : ZB MR1 Signal #2 Phase: ZB MR2
 Signal #1 Info : 30Mx0.32mmx 0.5µm Signal #2 Info : 30M x 0.32mm x 0.25µm

Compound	RT#1	RT#2	Resp#1	Resp#2	ng/ml	ng/ml

System Monitoring Compounds						
1) SA Tetrachlo...	3.441	2.866f	1896600	2710621	0.302	0.412 #
2) SA Decachlor...	8.716	7.611	1514426	3603211	0.773	1.133 #
Target Compounds						
3) L1 AR-1016-1	4.564	3.833	81681945	81906512	429.096	364.747
4) L1 AR-1016-2	4.584	3.849	135.1E6	127.6E6	460.808	391.944
5) L1 AR-1016-3	4.642	4.010	85624049	64444677	469.445	359.925
6) L1 AR-1016-4	4.735	4.058	61660077	55370687	415.919	371.722
7) L1 AR-1016-5	5.025	4.255	58979997	68824134	414.630	368.469
8) L2 AR-1221-1	3.651	3.026	8194296	8294443	120.450	103.167
9) L2 AR-1221-2	3.735	3.104	7686168	8157427	169.704	144.627
10) L2 AR-1221-3	3.805	3.173	40587875	40365677	265.479	228.282
11) L3 AR-1232-1	3.805	3.173	40587875	40365677	312.411	269.172
12) L3 AR-1232-2	4.303	3.849	69191127	127.6E6	1005.587	849.216
13) L3 AR-1232-3	4.584	4.010	135.1E6	64444677	1044.086	793.895
14) L3 AR-1232-4	4.735	4.096	61660077	61419689	929.029	890.433
15) L3 AR-1232-5	4.832	4.255	44360065	68824134	998.322	879.543
16) L4 AR-1242-1	4.564	3.833	81681945	81906512	549.184	463.461
17) L4 AR-1242-2	4.584	3.849	135.1E6	127.6E6	589.905	496.326
18) L4 AR-1242-3	4.642	4.010	85624049	64444677	598.267	456.419
19) L4 AR-1242-4	4.735	4.096	61660077	61419689	528.779	461.295
20) L4 AR-1242-5	5.461	4.592	8938185	56387871	72.617	328.206 #
21) L5 AR-1248-1	4.564	3.833	81681945	81906512	753.197	625.760
22) L5 AR-1248-2	4.832	4.058	44360065	55370687	290.129	279.707
23) L5 AR-1248-3	5.025	4.096	58979997	61419689	321.403	325.839
24) L5 AR-1248-4	5.425	4.255	12985545	68824134	63.511	298.540 #
25) L5 AR-1248-5	5.461	4.631	8938185	8183081	44.553	36.968
26) L6 AR-1254-1	5.396	4.592	51140758	56387871	238.246	159.829 #
27) L6 AR-1254-2	5.618	4.739	56618157	54994249	172.541	175.325
28) L6 AR-1254-3	5.975	5.124	26984141	28534307	80.053	58.454 #
29) L6 AR-1254-4	6.262	5.350	16971708	12615159	73.051	41.831 #
30) L6 AR-1254-5	6.683	5.756	192.0E6	213.8E6	722.974	479.440 #
31) L7 AR-1260-1	6.143	5.253	115.3E6	147.6E6	421.970	407.766
32) L7 AR-1260-2	6.407	5.442	143.9E6	181.6E6	434.971	419.899
33) L7 AR-1260-3	6.767	5.584	88471287	172.7E6	368.021	419.060
34) L7 AR-1260-4	6.987	6.047	104.4E6	123.1E6	398.450	353.542
35) L7 AR-1260-5	7.306	6.292	212.9E6	270.9E6	403.517	362.163
36) L8 AR-1262-1	6.767	5.800	88471287	124.2E6	271.089	270.299
37) L8 AR-1262-2	7.306	6.292	212.9E6	270.9E6	406.673	344.461
38) L8 AR-1262-3	7.589	6.571	127.7E6	51979344	375.849	162.218 #
39) L8 AR-1262-4	7.655	6.629	67773573	198.5E6	262.501	341.065 #
40) L8 AR-1262-5	8.180	7.123	42166730	61282337	267.730	224.931
41) L9 AR-1268-1	7.589	6.571	127.7E6	51979344	213.514	56.163 #

Data Path : Z:\pestpcbsrv\HPCHEM1\ECD_Q\Data\PQ062524\
 Data File : PQ067162.D
 Signal(s) : Signal #1: ECD1A.ch Signal #2: ECD2B.ch
 Acq On : 25 Jun 2024 14:02
 Operator : YP\AJ
 Sample : P3005-09
 Misc :
 ALS Vial : 5 Sample Multiplier: 1

Instrument :
 ECD_Q
ClientSampleId :
 PCB-GPC-BLANK-SPIKE

Integration File signal 1: autoint1.e
 Integration File signal 2: autoint2.e
 Quant Time: Jun 26 01:37:49 2024
 Quant Method : Z:\pestpcbsrv\HPCHEM1\ECD_Q\Method\PQ053024CLP.M
 Quant Title : GC EXTRACTABLES
 QLast Update : Fri May 31 07:30:35 2024
 Response via : Initial Calibration
 Integrator: ChemStation

Volume Inj. : 1 µl
 Signal #1 Phase : ZB MR1 Signal #2 Phase: ZB MR2
 Signal #1 Info : 30Mx0.32mmx 0.5µm Signal #2 Info : 30M x 0.32mm x 0.25µm

	Compound	RT#1	RT#2	Resp#1	Resp#2	ng/ml	ng/ml
42)	L9 AR-1268-2	7.655	6.629	67773573	198.5E6	125.871	236.895 #
43)	L9 AR-1268-3	7.844	6.834	2710265	4868971	5.873	6.577
44)	L9 AR-1268-4	8.180	7.123	42166730	61282337	242.728	199.617
45)	L9 AR-1268-5	8.479	7.391	14230205	20383220	10.422	9.255

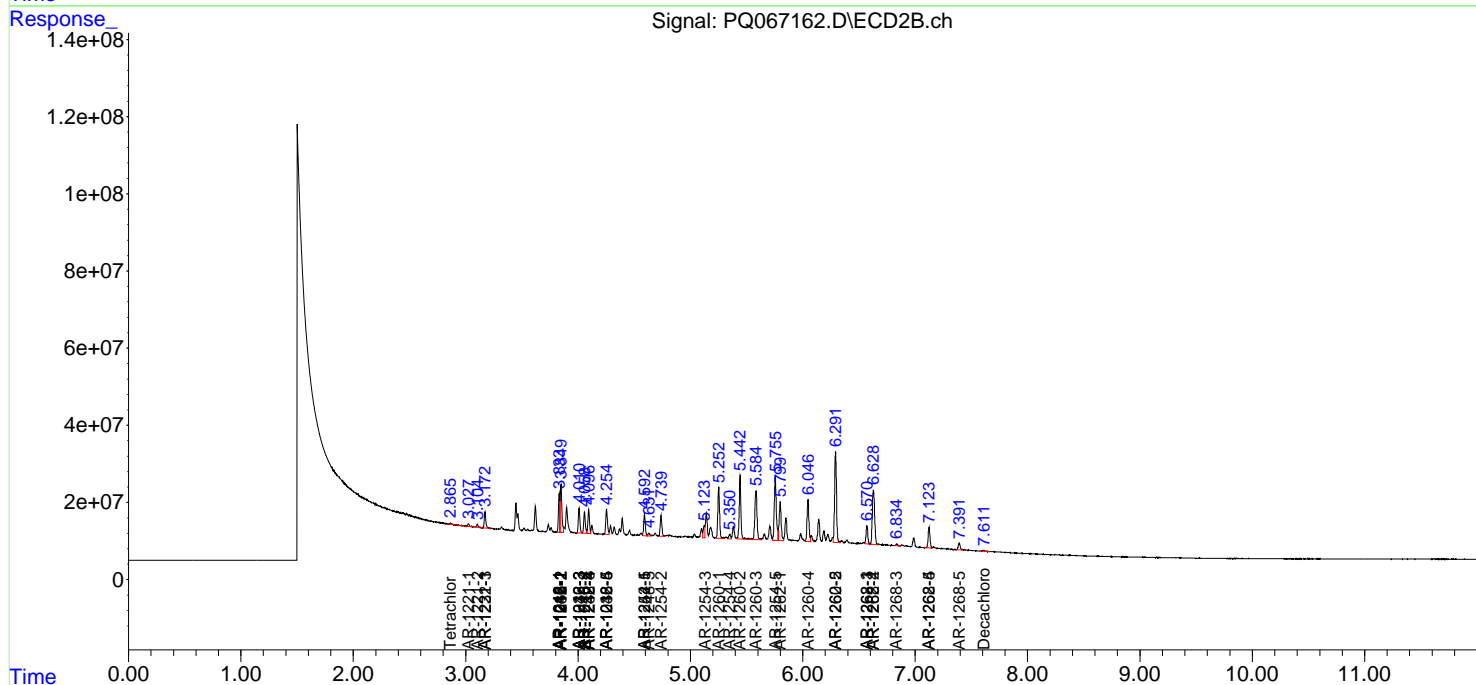
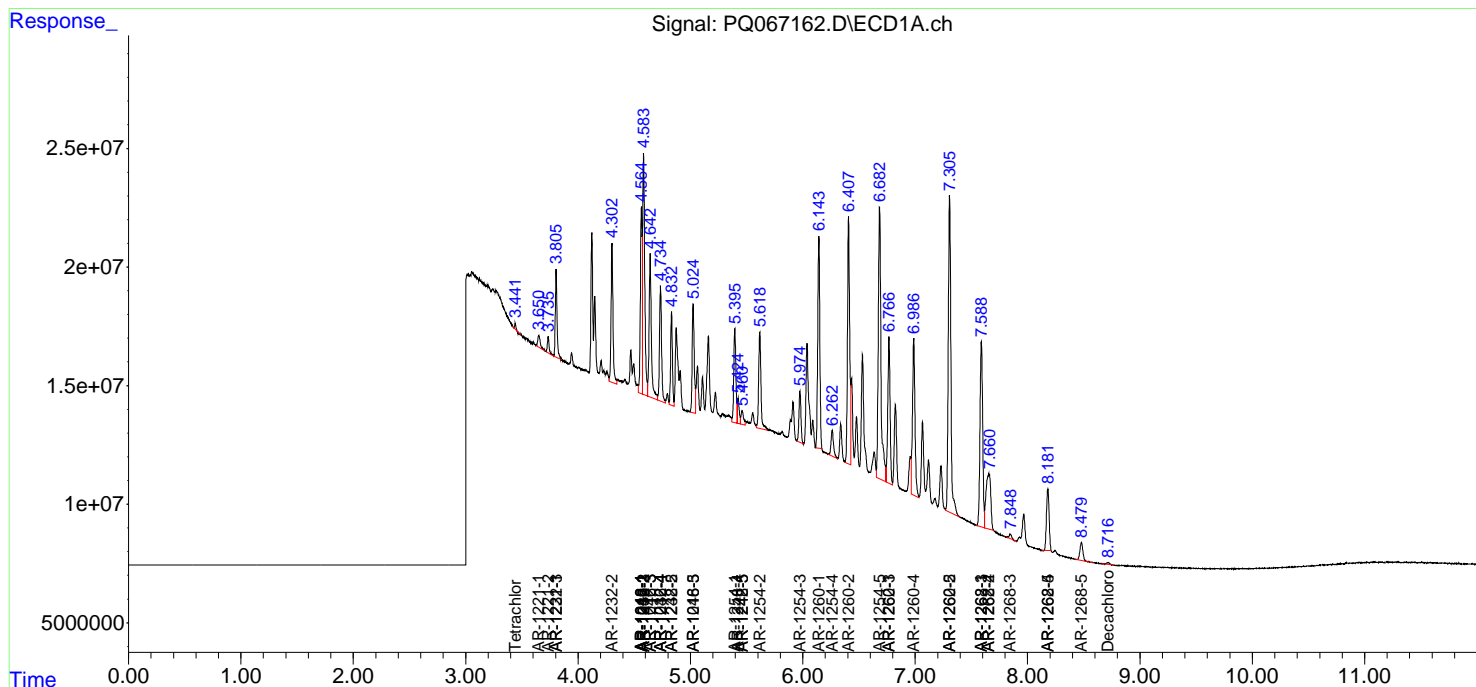
(f)=RT Delta > 1/2 Window (#)=Amounts differ by > 25% (m)=manual int.

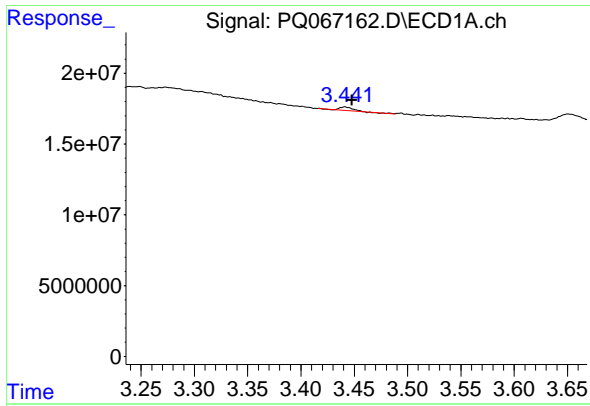
Data Path : Z:\pestpcbsrv\HPCHEM1\ECD_Q\Data\PQ067162\
 Data File : PQ067162.D
 Signal(s) : Signal #1: ECD1A.ch Signal #2: ECD2B.ch
 Acq On : 25 Jun 2024 14:02
 Operator : YP\AJ
 Sample : P3005-09
 Misc :
 ALS Vial : 5 Sample Multiplier: 1

Instrument :
 ECD_Q
 ClientSampleId :
 PCB-GPC-BLANK-SPIKE

Integration File signal 1: autoint1.e
 Integration File signal 2: autoint2.e
 Quant Time: Jun 26 01:37:49 2024
 Quant Method : Z:\pestpcbsrv\HPCHEM1\ECD_Q\Method\PQ053024CLP.M
 Quant Title : GC EXTRACTABLES
 QLast Update : Fri May 31 07:30:35 2024
 Response via : Initial Calibration
 Integrator: ChemStation

Volume Inj. : 1 µl
 Signal #1 Phase : ZB MR1 Signal #2 Phase: ZB MR2
 Signal #1 Info : 30Mx0.32mmx 0.5µm Signal #2 Info : 30M x 0.32mm x 0.25µm

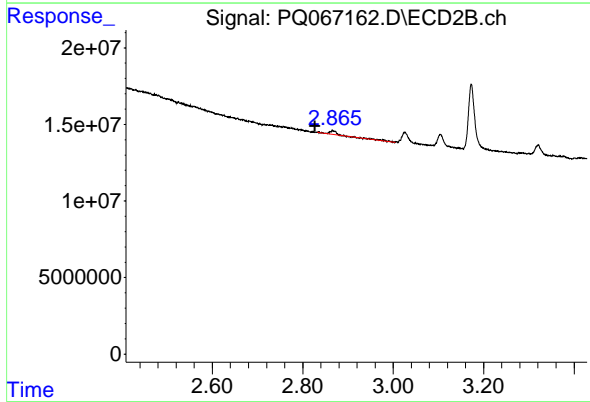




#1 Tetrachloro-m-xylene

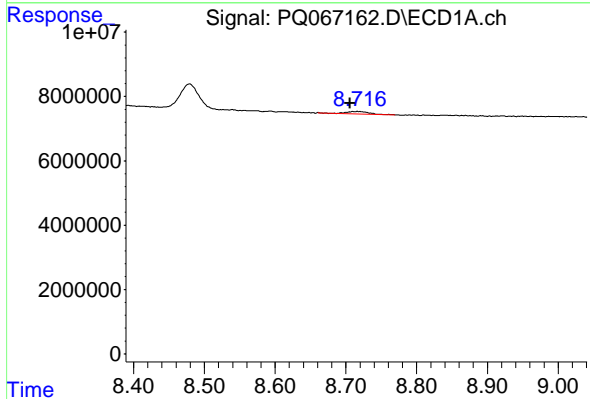
R.T.: 3.441 min
 Delta R.T.: -0.007 min
 Response: 1896600
 Conc: 0.30 ng/ml

Instrument : ECD_Q
 ClientSampleId : PCB-GPC-BLANK-SPIKE



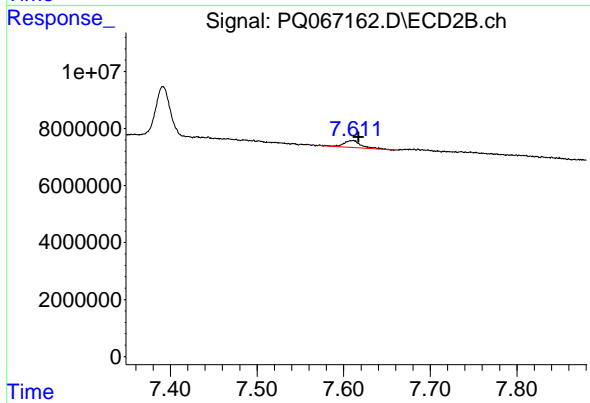
#1 Tetrachloro-m-xylene

R.T.: 2.866 min
 Delta R.T.: 0.039 min
 Response: 2710621
 Conc: 0.41 ng/ml



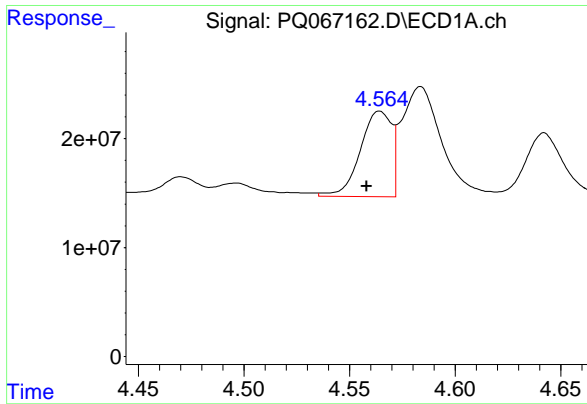
#2 Decachlorobiphenyl

R.T.: 8.716 min
 Delta R.T.: 0.010 min
 Response: 1514426
 Conc: 0.77 ng/ml



#2 Decachlorobiphenyl

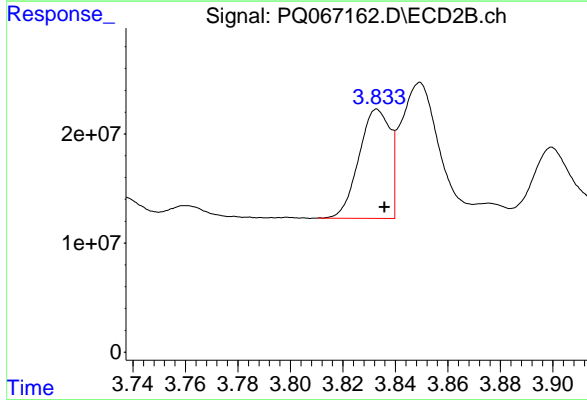
R.T.: 7.611 min
 Delta R.T.: -0.007 min
 Response: 3603211
 Conc: 1.13 ng/ml



#3 AR-1016-1

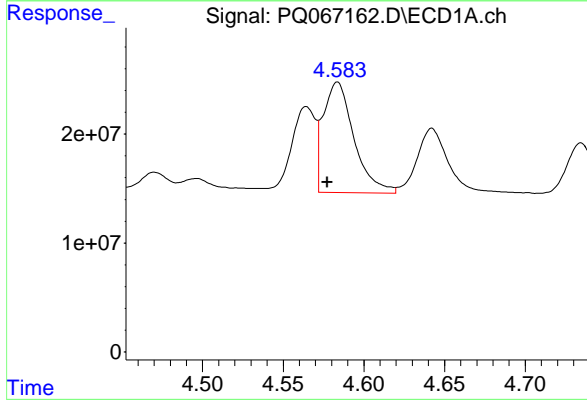
R.T.: 4.564 min
 Delta R.T.: 0.006 min
 Response: 81681945
 Conc: 429.10 ng/ml

Instrument :
 ECD_Q
 ClientSampleId :
 PCB-GPC-BLANK-SPIKE



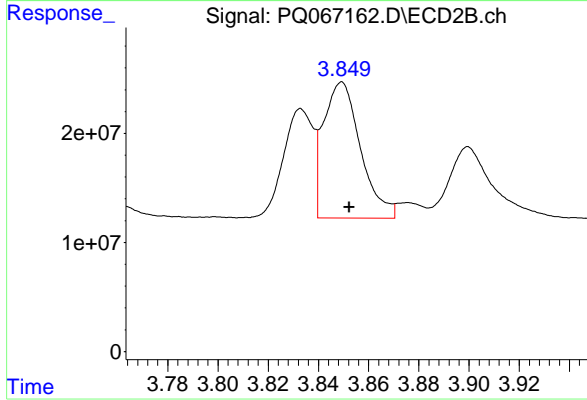
#3 AR-1016-1

R.T.: 3.833 min
 Delta R.T.: -0.003 min
 Response: 81906512
 Conc: 364.75 ng/ml



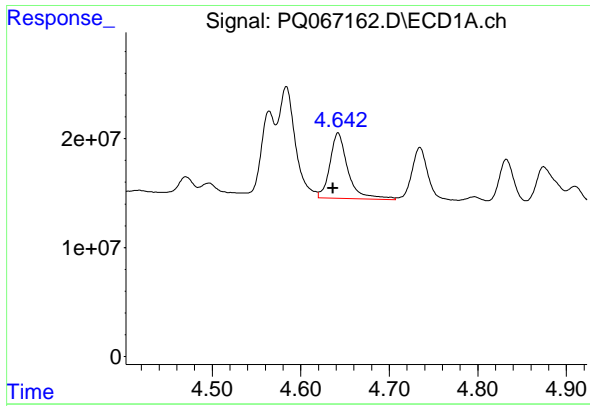
#4 AR-1016-2

R.T.: 4.584 min
 Delta R.T.: 0.006 min
 Response: 135067805
 Conc: 460.81 ng/ml



#4 AR-1016-2

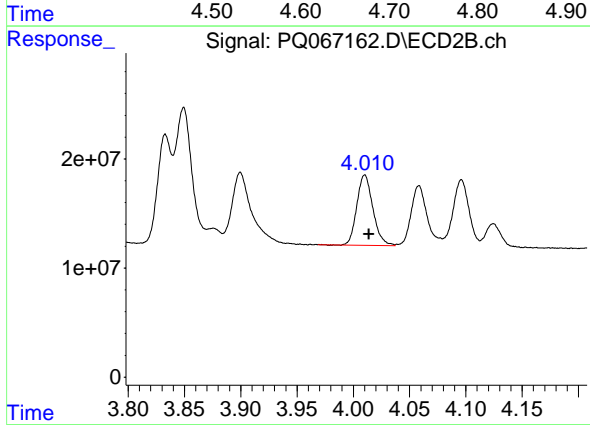
R.T.: 3.849 min
 Delta R.T.: -0.003 min
 Response: 127638355
 Conc: 391.94 ng/ml



#5 AR-1016-3

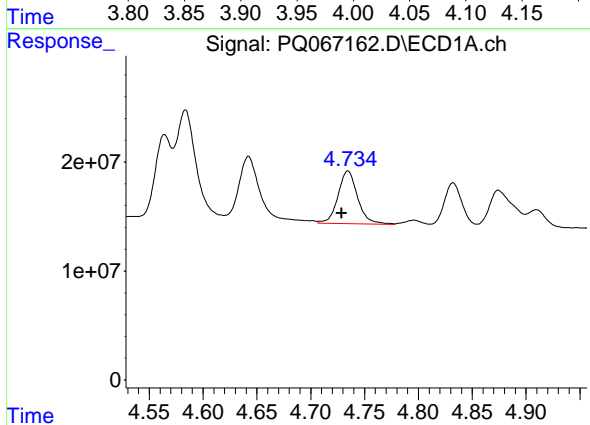
R.T.: 4.642 min
 Delta R.T.: 0.006 min
 Response: 85624049
 Conc: 469.45 ng/ml

Instrument :
 ECD_Q
 ClientSampleId :
 PCB-GPC-BLANK-SPIKE



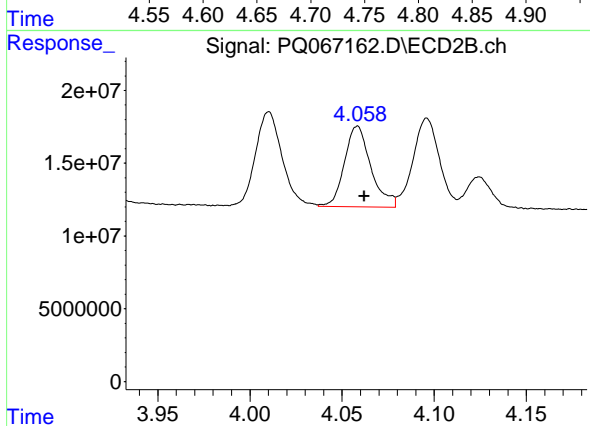
#5 AR-1016-3

R.T.: 4.010 min
 Delta R.T.: -0.004 min
 Response: 64444677
 Conc: 359.93 ng/ml



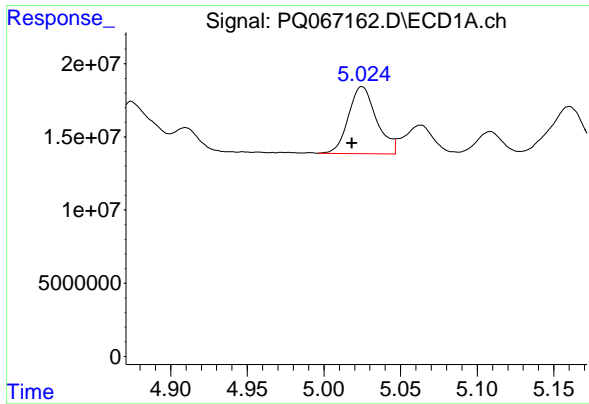
#6 AR-1016-4

R.T.: 4.735 min
 Delta R.T.: 0.006 min
 Response: 61660077
 Conc: 415.92 ng/ml



#6 AR-1016-4

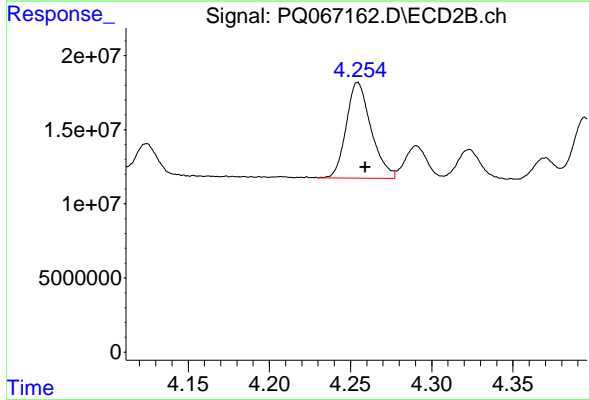
R.T.: 4.058 min
 Delta R.T.: -0.004 min
 Response: 55370687
 Conc: 371.72 ng/ml



#7 AR-1016-5

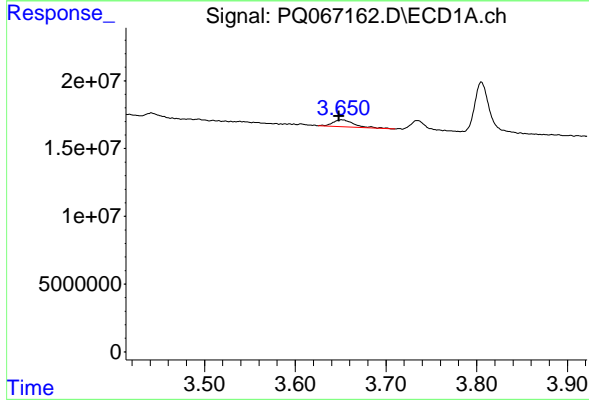
R.T.: 5.025 min
 Delta R.T.: 0.006 min
 Response: 58979997
 Conc: 414.63 ng/ml

Instrument :
 ECD_Q
 ClientSampleId :
 PCB-GPC-BLANK-SPIKE



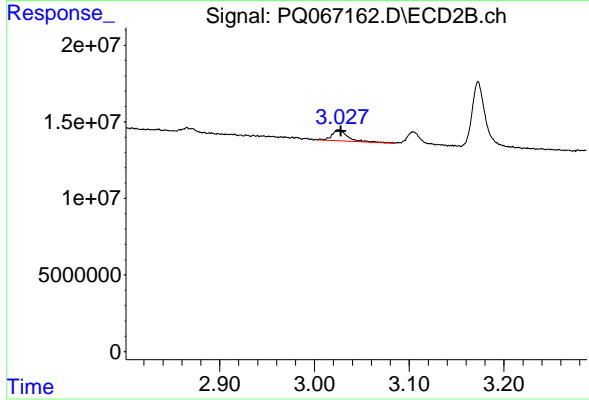
#7 AR-1016-5

R.T.: 4.255 min
 Delta R.T.: -0.005 min
 Response: 68824134
 Conc: 368.47 ng/ml



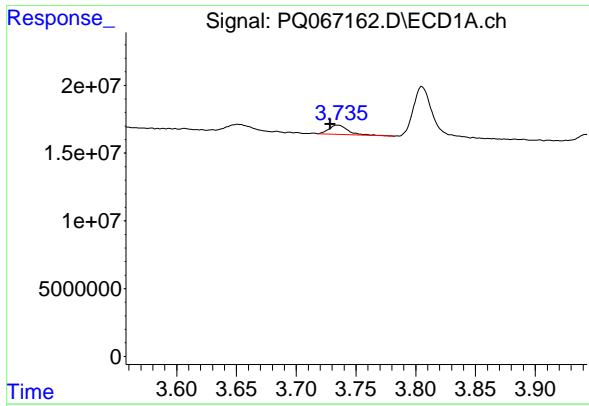
#8 AR-1221-1

R.T.: 3.651 min
 Delta R.T.: 0.003 min
 Response: 8194296
 Conc: 120.45 ng/ml



#8 AR-1221-1

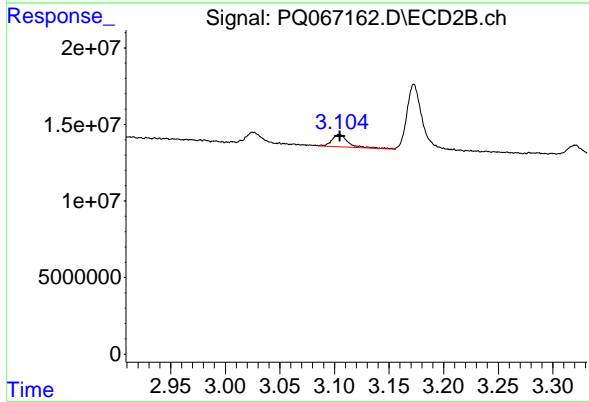
R.T.: 3.026 min
 Delta R.T.: -0.002 min
 Response: 8294443
 Conc: 103.17 ng/ml



#9 AR-1221-2

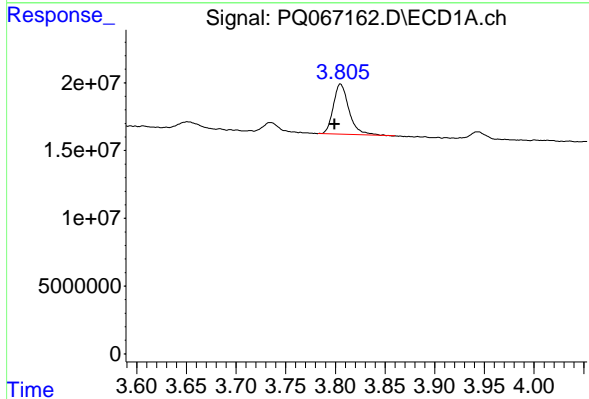
R.T.: 3.735 min
 Delta R.T.: 0.006 min
 Response: 7686168
 Conc: 169.70 ng/ml

Instrument :
 ECD_Q
 ClientSampleId :
 PCB-GPC-BLANK-SPIKE



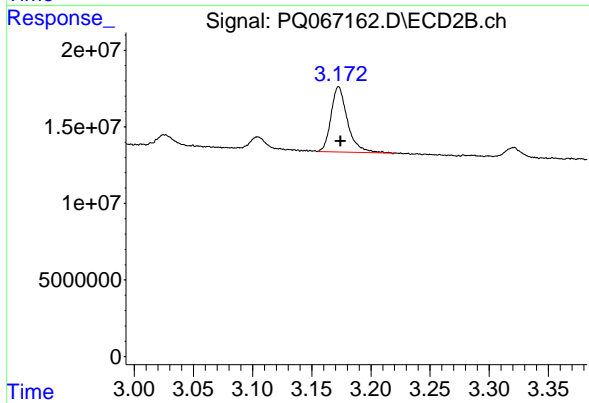
#9 AR-1221-2

R.T.: 3.104 min
 Delta R.T.: 0.000 min
 Response: 8157427
 Conc: 144.63 ng/ml



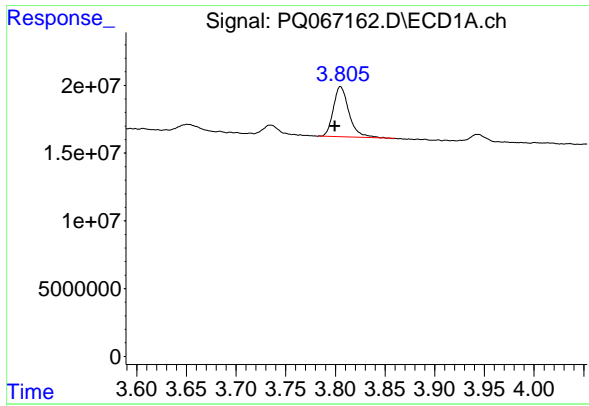
#10 AR-1221-3

R.T.: 3.805 min
 Delta R.T.: 0.006 min
 Response: 40587875
 Conc: 265.48 ng/ml



#10 AR-1221-3

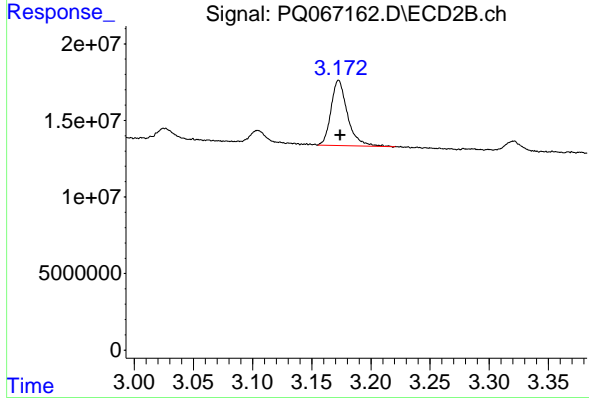
R.T.: 3.173 min
 Delta R.T.: -0.001 min
 Response: 40365677
 Conc: 228.28 ng/ml



#11 AR-1232-1

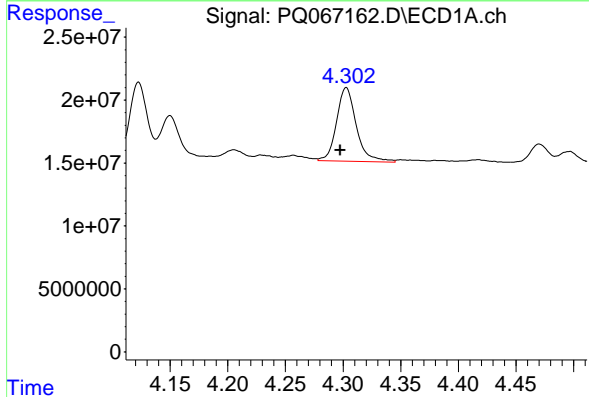
R.T.: 3.805 min
 Delta R.T.: 0.006 min
 Response: 40587875
 Conc: 312.41 ng/ml

Instrument :
 ECD_Q
 ClientSampleId :
 PCB-GPC-BLANK-SPIKE



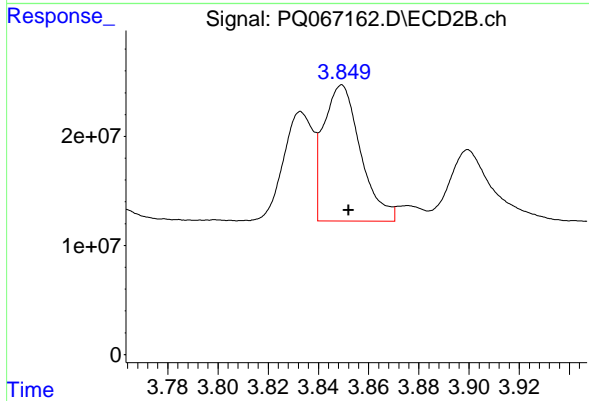
#11 AR-1232-1

R.T.: 3.173 min
 Delta R.T.: -0.001 min
 Response: 40365677
 Conc: 269.17 ng/ml



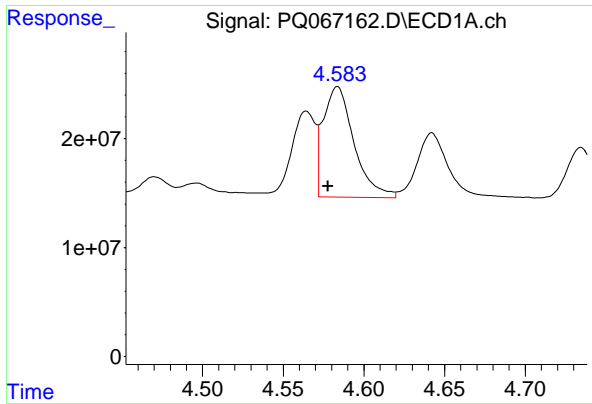
#12 AR-1232-2

R.T.: 4.303 min
 Delta R.T.: 0.005 min
 Response: 69191127
 Conc: 1005.59 ng/ml



#12 AR-1232-2

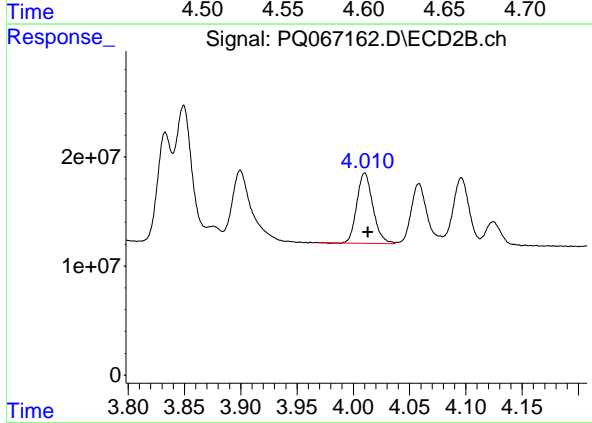
R.T.: 3.849 min
 Delta R.T.: -0.003 min
 Response: 127638355
 Conc: 849.22 ng/ml



#13 AR-1232-3

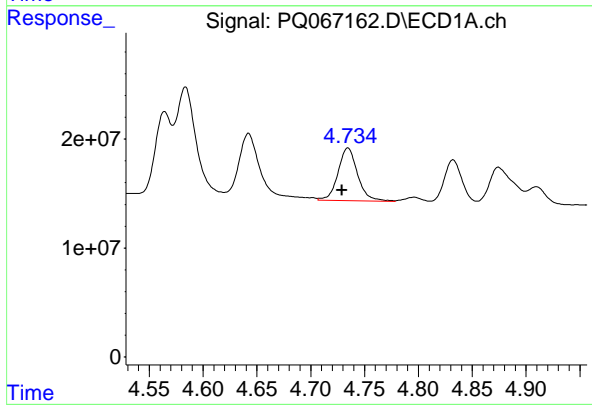
R.T.: 4.584 min
 Delta R.T.: 0.006 min
 Response: 135067805
 Conc: 1044.09 ng/ml

Instrument :
 ECD_Q
 ClientSampleId :
 PCB-GPC-BLANK-SPIKE



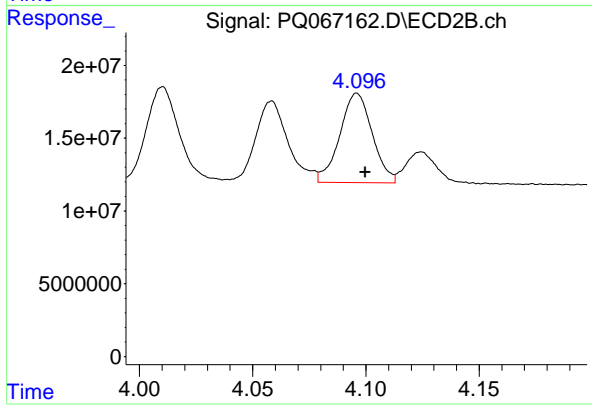
#13 AR-1232-3

R.T.: 4.010 min
 Delta R.T.: -0.003 min
 Response: 64444677
 Conc: 793.89 ng/ml



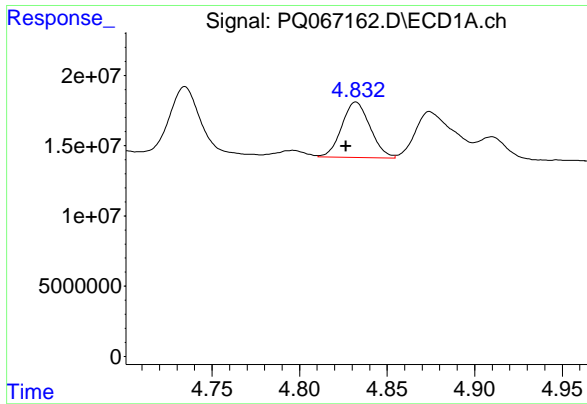
#14 AR-1232-4

R.T.: 4.735 min
 Delta R.T.: 0.006 min
 Response: 61660077
 Conc: 929.03 ng/ml



#14 AR-1232-4

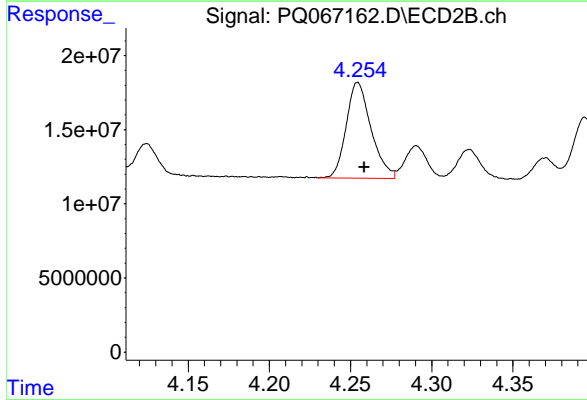
R.T.: 4.096 min
 Delta R.T.: -0.004 min
 Response: 61419689
 Conc: 890.43 ng/ml



#15 AR-1232-5

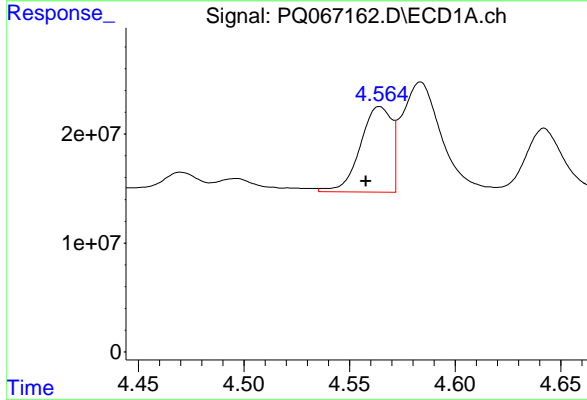
R.T.: 4.832 min
 Delta R.T.: 0.006 min
 Response: 44360065
 Conc: 998.32 ng/ml

Instrument :
 ECD_Q
 ClientSampleId :
 PCB-GPC-BLANK-SPIKE



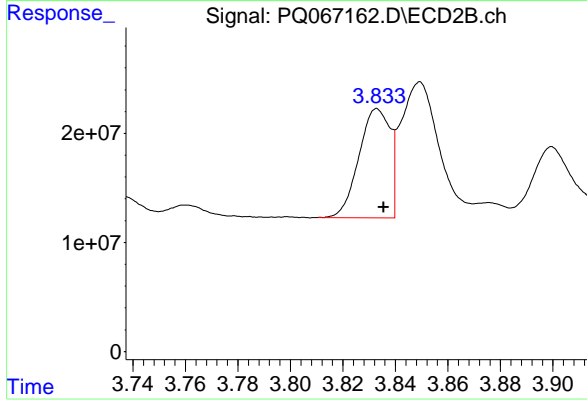
#15 AR-1232-5

R.T.: 4.255 min
 Delta R.T.: -0.004 min
 Response: 68824134
 Conc: 879.54 ng/ml



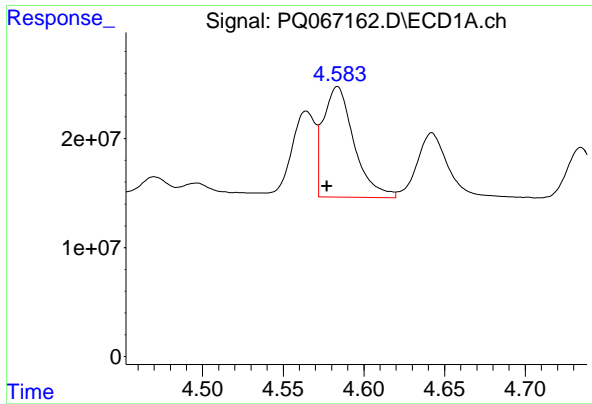
#16 AR-1242-1

R.T.: 4.564 min
 Delta R.T.: 0.006 min
 Response: 81681945
 Conc: 549.18 ng/ml



#16 AR-1242-1

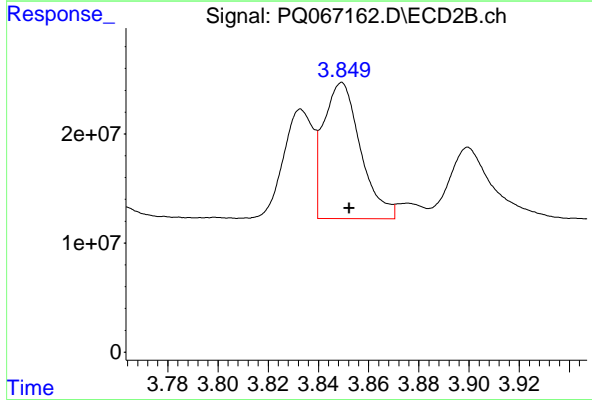
R.T.: 3.833 min
 Delta R.T.: -0.002 min
 Response: 81906512
 Conc: 463.46 ng/ml



#17 AR-1242-2

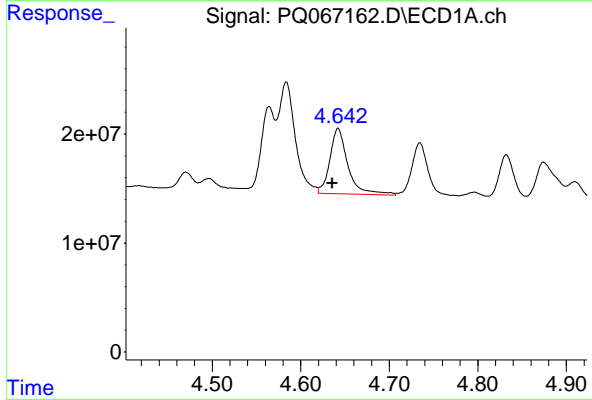
R.T.: 4.584 min
 Delta R.T.: 0.007 min
 Response: 135067805
 Conc: 589.91 ng/ml

Instrument :
 ECD_Q
 ClientSampleId :
 PCB-GPC-BLANK-SPIKE



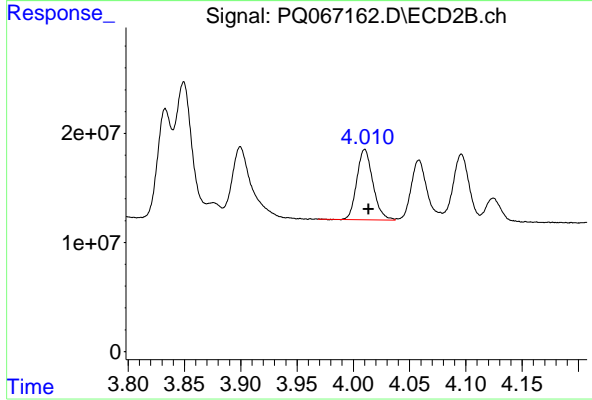
#17 AR-1242-2

R.T.: 3.849 min
 Delta R.T.: -0.003 min
 Response: 127638355
 Conc: 496.33 ng/ml



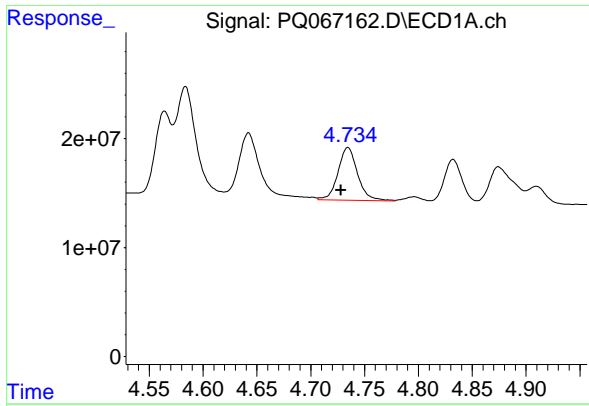
#18 AR-1242-3

R.T.: 4.642 min
 Delta R.T.: 0.006 min
 Response: 85624049
 Conc: 598.27 ng/ml



#18 AR-1242-3

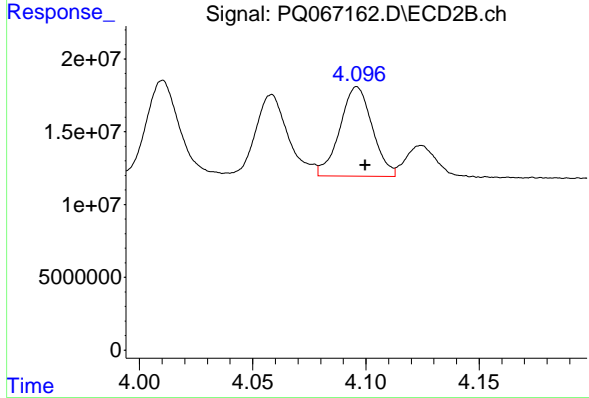
R.T.: 4.010 min
 Delta R.T.: -0.003 min
 Response: 64444677
 Conc: 456.42 ng/ml



#19 AR-1242-4

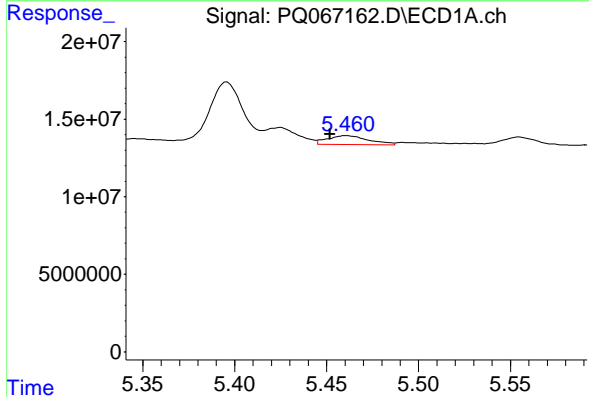
R.T.: 4.735 min
 Delta R.T.: 0.006 min
 Response: 61660077
 Conc: 528.78 ng/ml

Instrument :
 ECD_Q
 ClientSampleId :
 PCB-GPC-BLANK-SPIKE



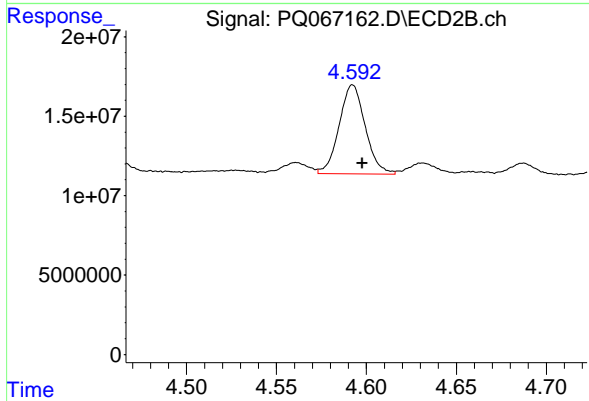
#19 AR-1242-4

R.T.: 4.096 min
 Delta R.T.: -0.004 min
 Response: 61419689
 Conc: 461.30 ng/ml



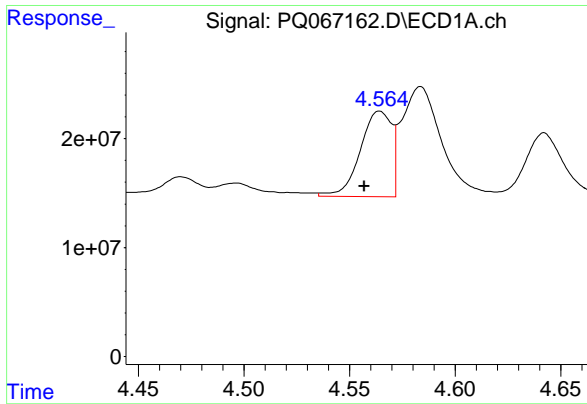
#20 AR-1242-5

R.T.: 5.461 min
 Delta R.T.: 0.009 min
 Response: 8938185
 Conc: 72.62 ng/ml



#20 AR-1242-5

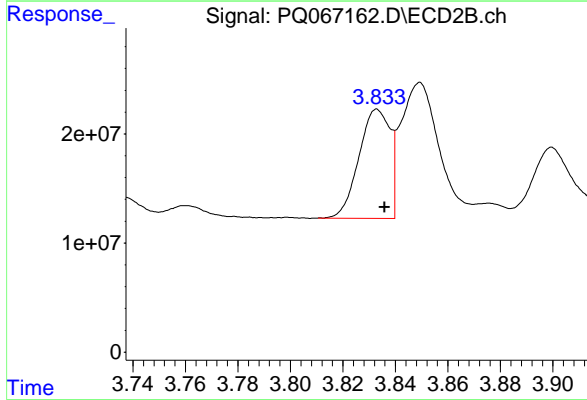
R.T.: 4.592 min
 Delta R.T.: -0.005 min
 Response: 56387871
 Conc: 328.21 ng/ml



#21 AR-1248-1

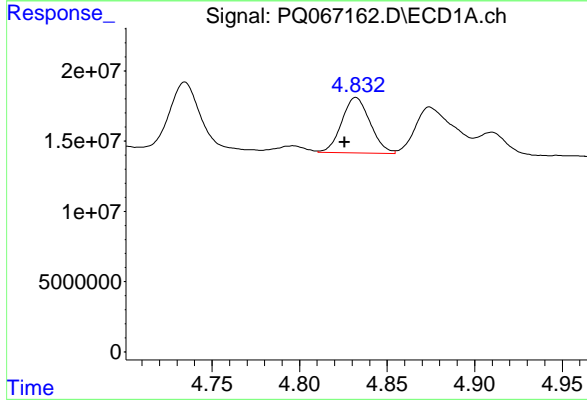
R.T.: 4.564 min
 Delta R.T.: 0.007 min
 Response: 81681945
 Conc: 753.20 ng/ml

Instrument :
 ECD_Q
 ClientSampleId :
 PCB-GPC-BLANK-SPIKE



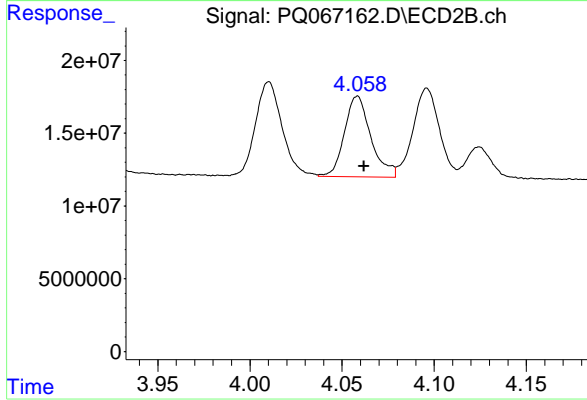
#21 AR-1248-1

R.T.: 3.833 min
 Delta R.T.: -0.003 min
 Response: 81906512
 Conc: 625.76 ng/ml



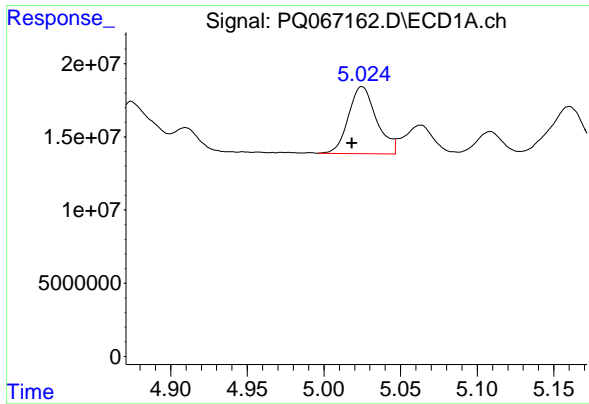
#22 AR-1248-2

R.T.: 4.832 min
 Delta R.T.: 0.006 min
 Response: 44360065
 Conc: 290.13 ng/ml



#22 AR-1248-2

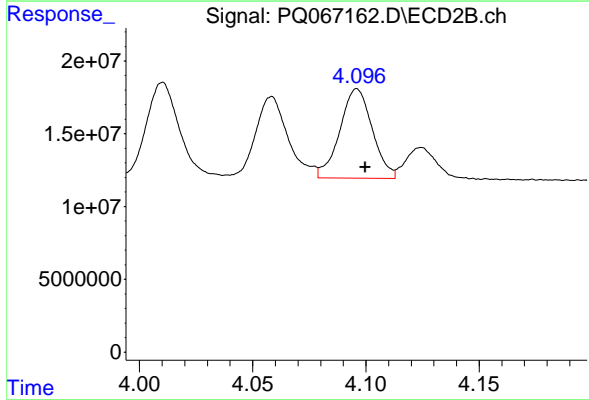
R.T.: 4.058 min
 Delta R.T.: -0.004 min
 Response: 55370687
 Conc: 279.71 ng/ml



#23 AR-1248-3

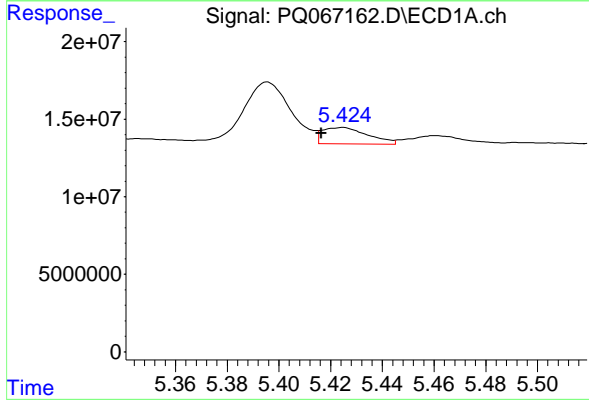
R.T.: 5.025 min
 Delta R.T.: 0.007 min
 Response: 58979997
 Conc: 321.40 ng/ml

Instrument :
 ECD_Q
 ClientSampleId :
 PCB-GPC-BLANK-SPIKE



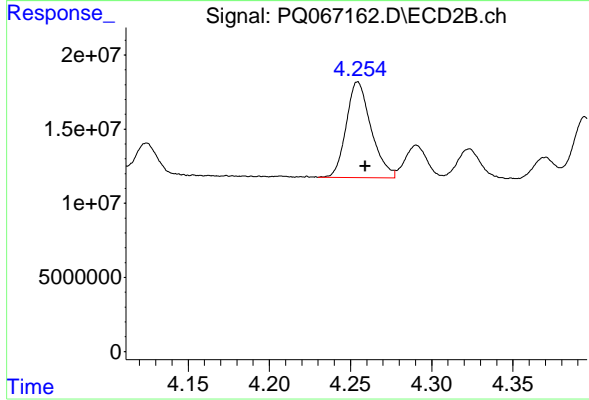
#23 AR-1248-3

R.T.: 4.096 min
 Delta R.T.: -0.004 min
 Response: 61419689
 Conc: 325.84 ng/ml



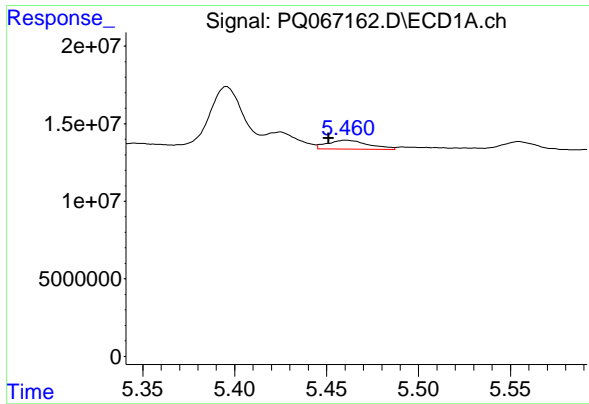
#24 AR-1248-4

R.T.: 5.425 min
 Delta R.T.: 0.008 min
 Response: 12985545
 Conc: 63.51 ng/ml



#24 AR-1248-4

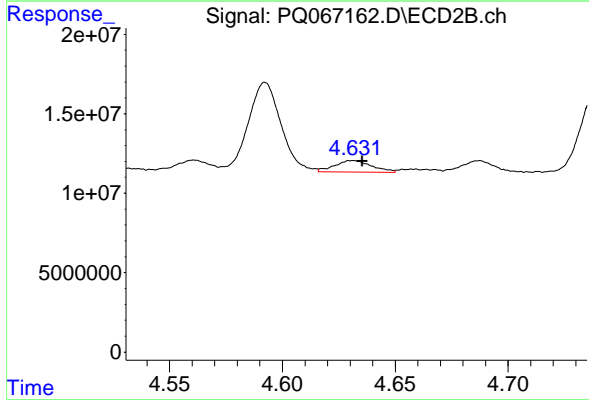
R.T.: 4.255 min
 Delta R.T.: -0.005 min
 Response: 68824134
 Conc: 298.54 ng/ml



#25 AR-1248-5

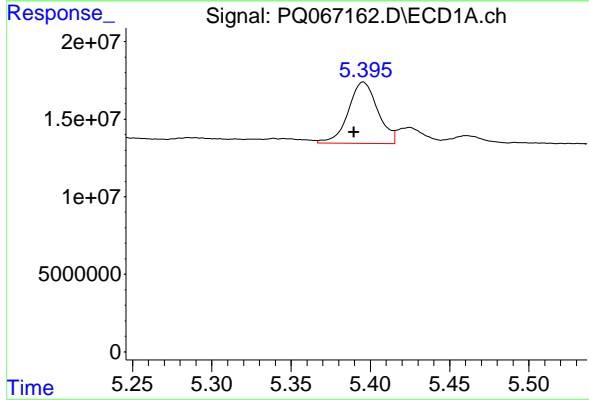
R.T.: 5.461 min
 Delta R.T.: 0.009 min
 Response: 8938185
 Conc: 44.55 ng/ml

Instrument : ECD_Q
 ClientSampleId : PCB-GPC-BLANK-SPIKE



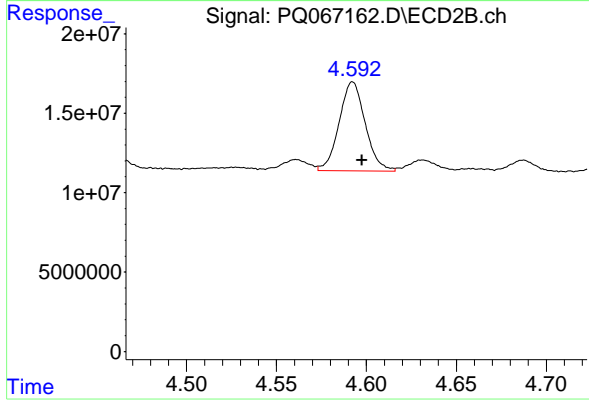
#25 AR-1248-5

R.T.: 4.631 min
 Delta R.T.: -0.004 min
 Response: 8183081
 Conc: 36.97 ng/ml



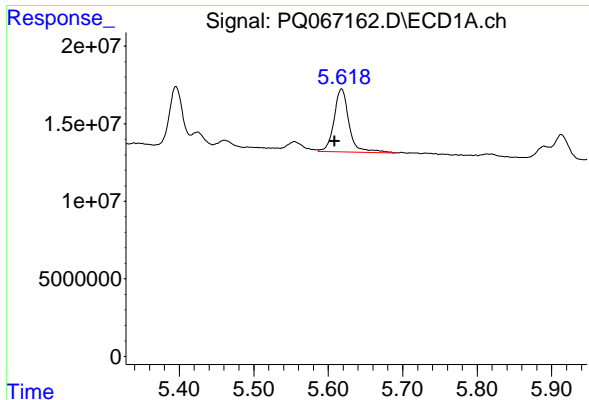
#26 AR-1254-1

R.T.: 5.396 min
 Delta R.T.: 0.006 min
 Response: 51140758
 Conc: 238.25 ng/ml



#26 AR-1254-1

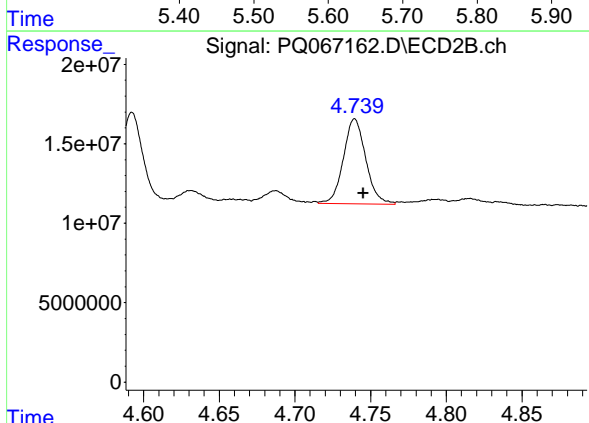
R.T.: 4.592 min
 Delta R.T.: -0.005 min
 Response: 56387871
 Conc: 159.83 ng/ml



#27 AR-1254-2

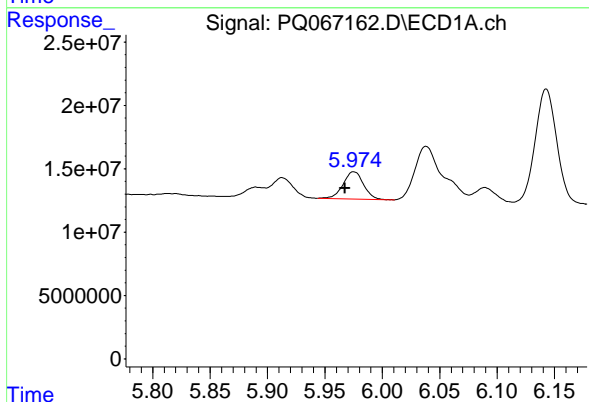
R.T.: 5.618 min
 Delta R.T.: 0.009 min
 Response: 56618157
 Conc: 172.54 ng/ml

Instrument :
 ECD_Q
 ClientSampleId :
 PCB-GPC-BLANK-SPIKE



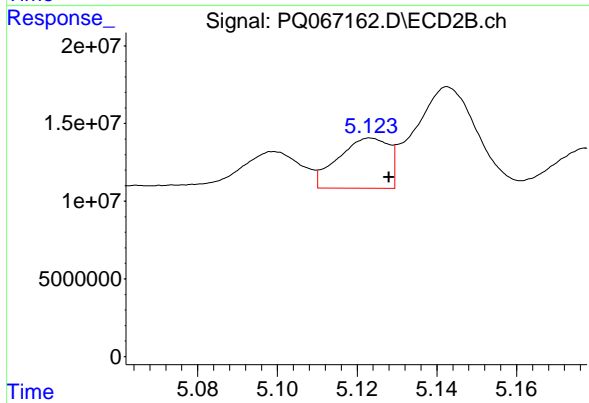
#27 AR-1254-2

R.T.: 4.739 min
 Delta R.T.: -0.006 min
 Response: 54994249
 Conc: 175.33 ng/ml



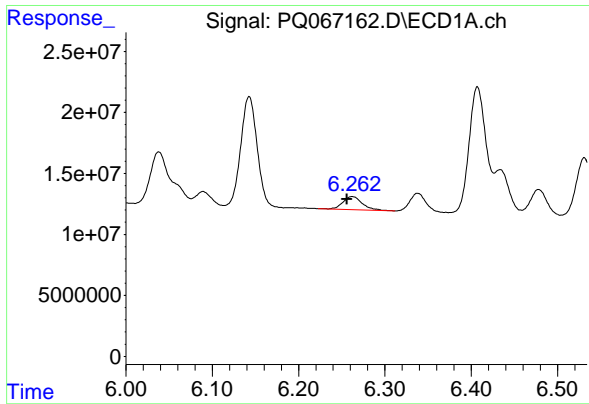
#28 AR-1254-3

R.T.: 5.975 min
 Delta R.T.: 0.008 min
 Response: 26984141
 Conc: 80.05 ng/ml



#28 AR-1254-3

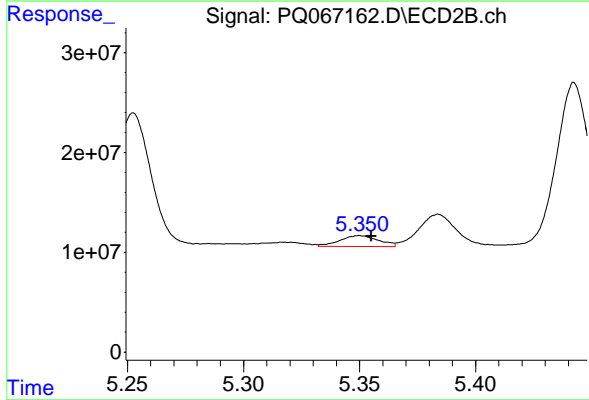
R.T.: 5.124 min
 Delta R.T.: -0.005 min
 Response: 28534307
 Conc: 58.45 ng/ml



#29 AR-1254-4

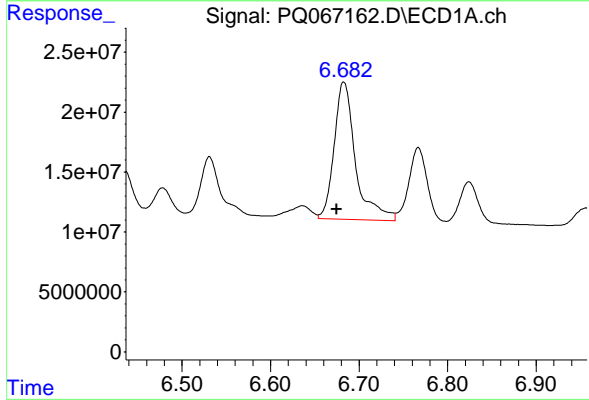
R.T.: 6.262 min
 Delta R.T.: 0.006 min
 Response: 16971708
 Conc: 73.05 ng/ml

Instrument :
 ECD_Q
 ClientSampleId :
 PCB-GPC-BLANK-SPIKE



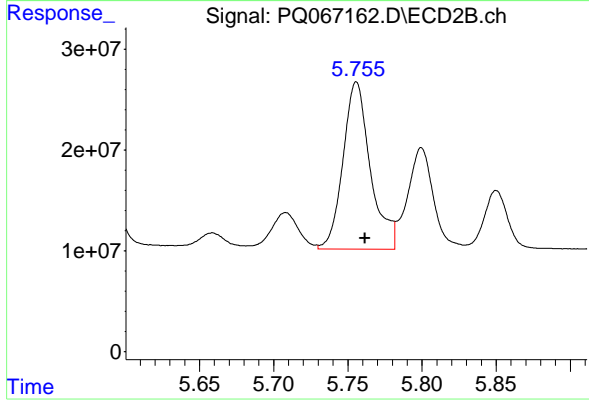
#29 AR-1254-4

R.T.: 5.350 min
 Delta R.T.: -0.005 min
 Response: 12615159
 Conc: 41.83 ng/ml



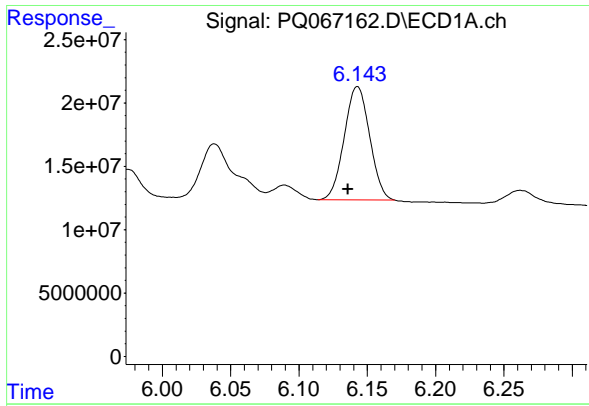
#30 AR-1254-5

R.T.: 6.683 min
 Delta R.T.: 0.008 min
 Response: 191997142
 Conc: 722.97 ng/ml



#30 AR-1254-5

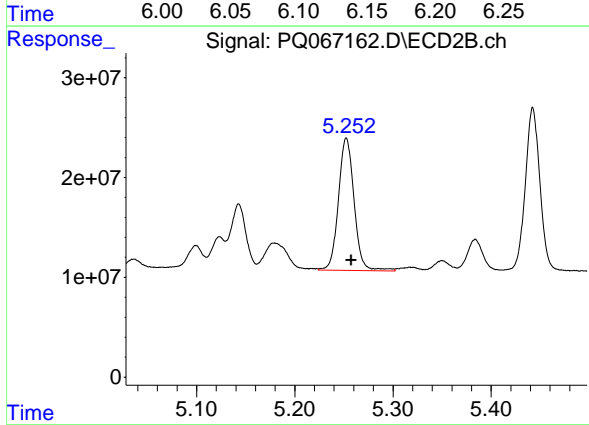
R.T.: 5.756 min
 Delta R.T.: -0.006 min
 Response: 213757420
 Conc: 479.44 ng/ml



#31 AR-1260-1

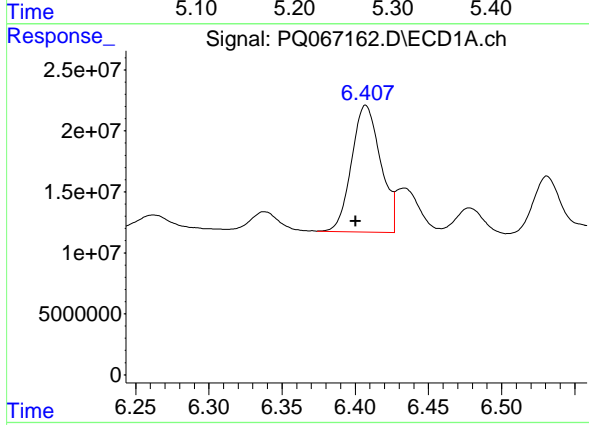
R.T.: 6.143 min
 Delta R.T.: 0.007 min
 Response: 115304443
 Conc: 421.97 ng/ml

Instrument :
 ECD_Q
 ClientSampleId :
 PCB-GPC-BLANK-SPIKE



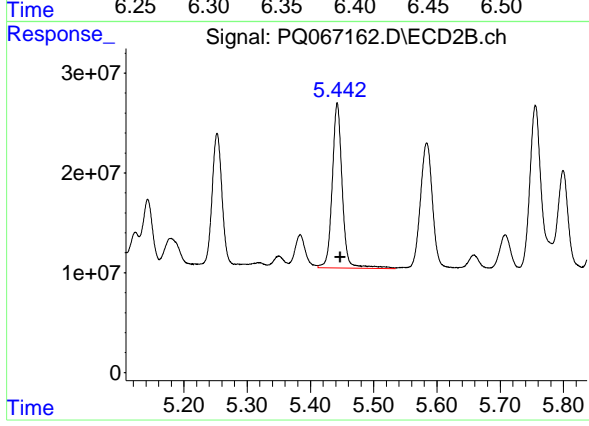
#31 AR-1260-1

R.T.: 5.253 min
 Delta R.T.: -0.005 min
 Response: 147581999
 Conc: 407.77 ng/ml



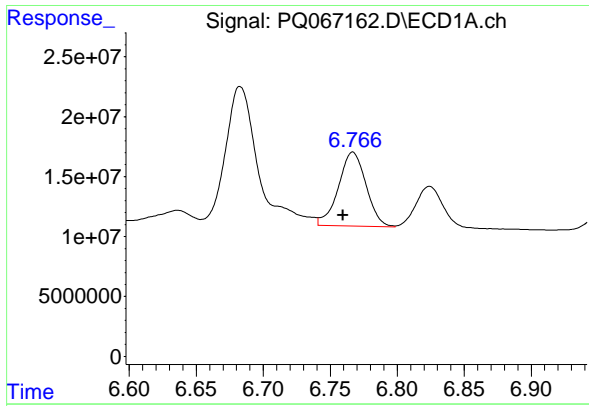
#32 AR-1260-2

R.T.: 6.407 min
 Delta R.T.: 0.007 min
 Response: 143944782
 Conc: 434.97 ng/ml



#32 AR-1260-2

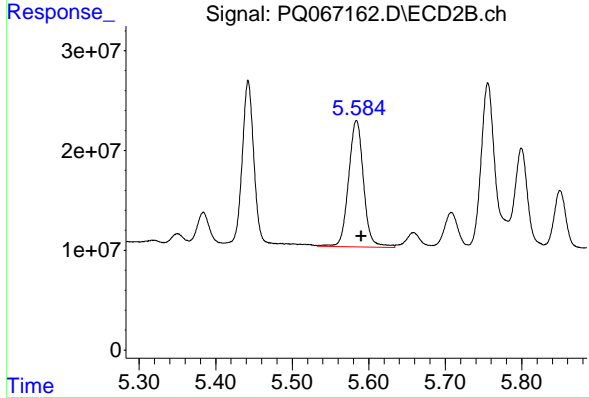
R.T.: 5.442 min
 Delta R.T.: -0.005 min
 Response: 181587945
 Conc: 419.90 ng/ml



#33 AR-1260-3

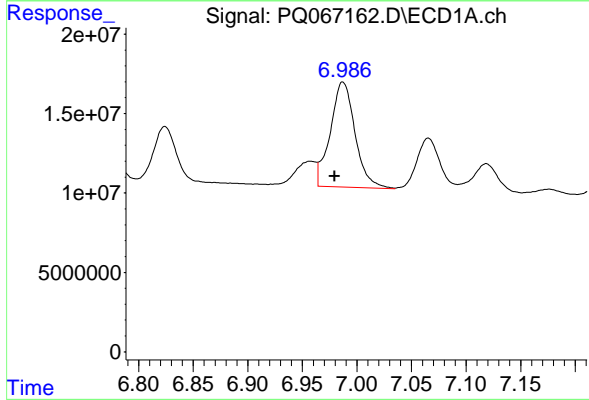
R.T.: 6.767 min
 Delta R.T.: 0.007 min
 Response: 88471287
 Conc: 368.02 ng/ml

Instrument :
 ECD_Q
 ClientSampleId :
 PCB-GPC-BLANK-SPIKE



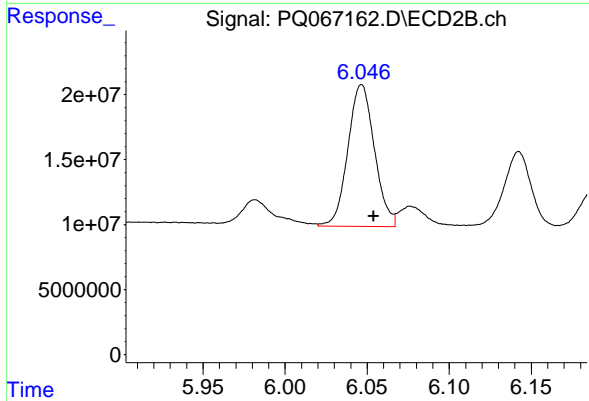
#33 AR-1260-3

R.T.: 5.584 min
 Delta R.T.: -0.006 min
 Response: 172740066
 Conc: 419.06 ng/ml



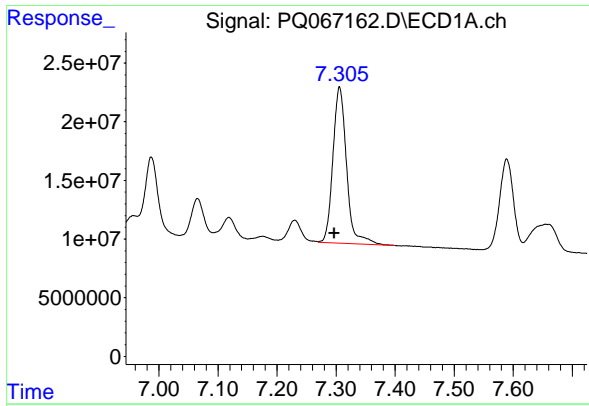
#34 AR-1260-4

R.T.: 6.987 min
 Delta R.T.: 0.007 min
 Response: 104394597
 Conc: 398.45 ng/ml



#34 AR-1260-4

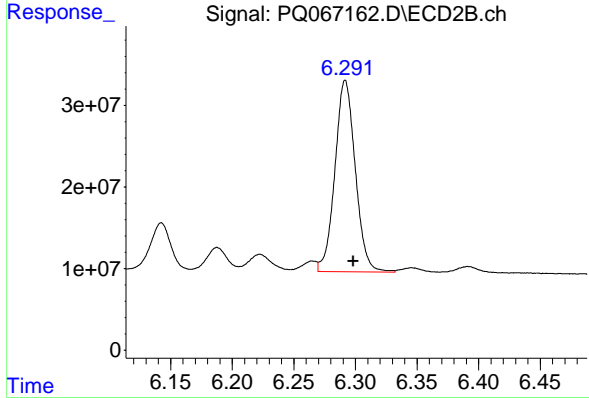
R.T.: 6.047 min
 Delta R.T.: -0.007 min
 Response: 123115609
 Conc: 353.54 ng/ml



#35 AR-1260-5

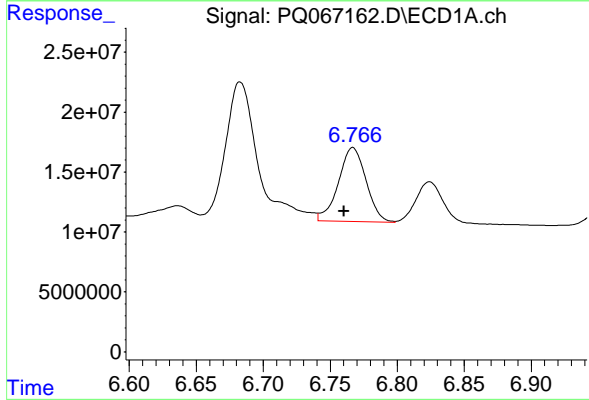
R.T.: 7.306 min
 Delta R.T.: 0.009 min
 Response: 212889793
 Conc: 403.52 ng/ml

Instrument :
 ECD_Q
 ClientSampleId :
 PCB-GPC-BLANK-SPIKE



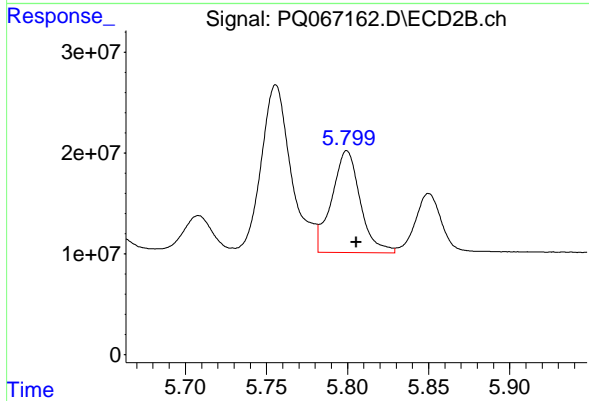
#35 AR-1260-5

R.T.: 6.292 min
 Delta R.T.: -0.007 min
 Response: 270914009
 Conc: 362.16 ng/ml



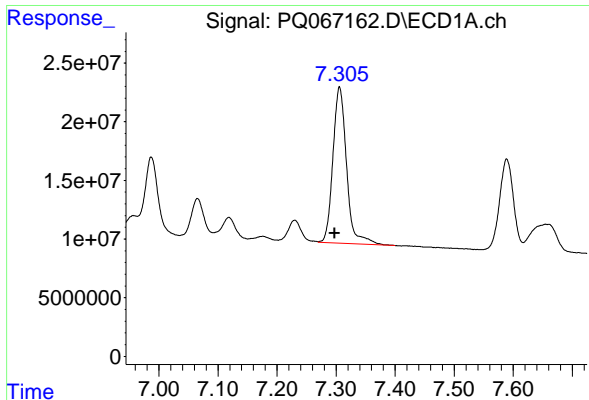
#36 AR-1262-1

R.T.: 6.767 min
 Delta R.T.: 0.007 min
 Response: 88471287
 Conc: 271.09 ng/ml



#36 AR-1262-1

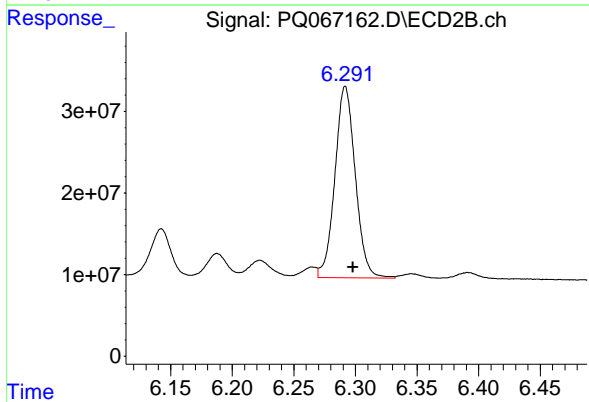
R.T.: 5.800 min
 Delta R.T.: -0.006 min
 Response: 124179440
 Conc: 270.30 ng/ml



#37 AR-1262-2

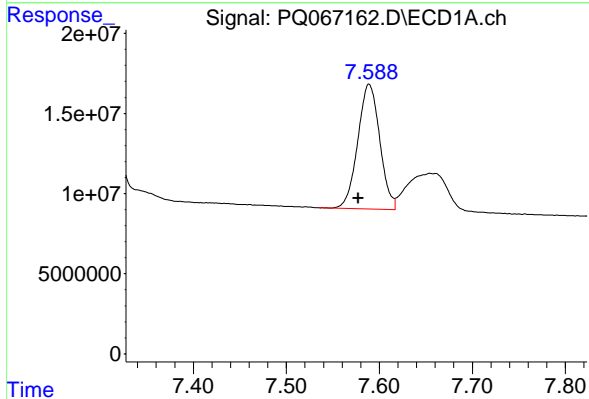
R.T.: 7.306 min
 Delta R.T.: 0.008 min
 Response: 212889793
 Conc: 406.67 ng/ml

Instrument :
 ECD_Q
 ClientSampleId :
 PCB-GPC-BLANK-SPIKE



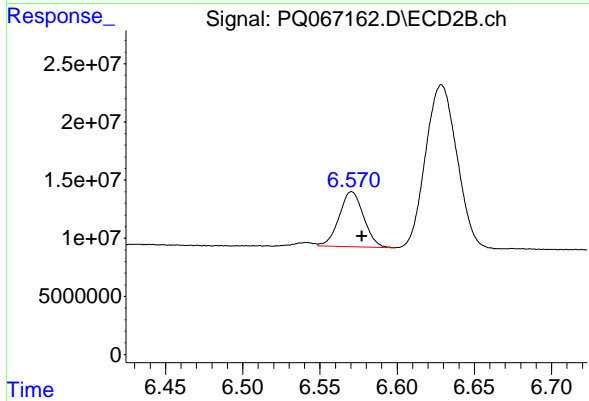
#37 AR-1262-2

R.T.: 6.292 min
 Delta R.T.: -0.006 min
 Response: 270914009
 Conc: 344.46 ng/ml



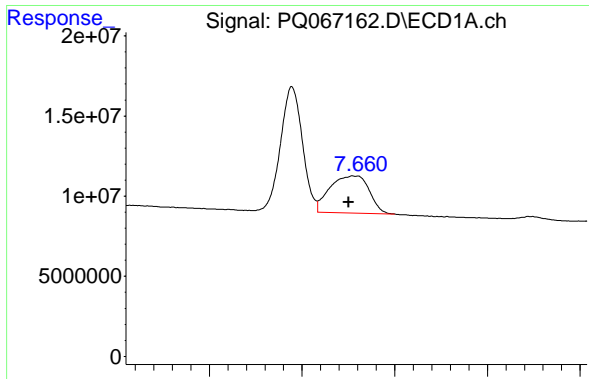
#38 AR-1262-3

R.T.: 7.589 min
 Delta R.T.: 0.011 min
 Response: 127703484
 Conc: 375.85 ng/ml



#38 AR-1262-3

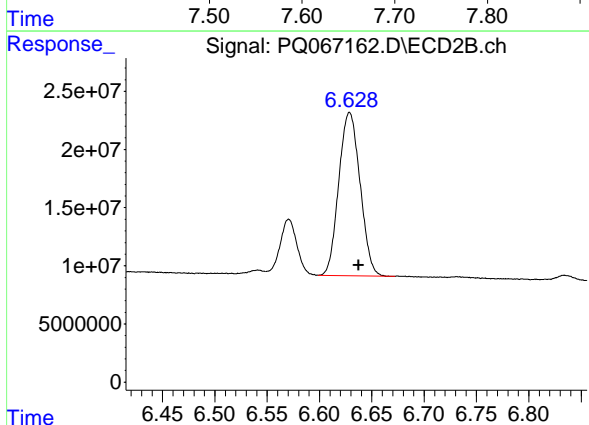
R.T.: 6.571 min
 Delta R.T.: -0.007 min
 Response: 51979344
 Conc: 162.22 ng/ml



#39 AR-1262-4

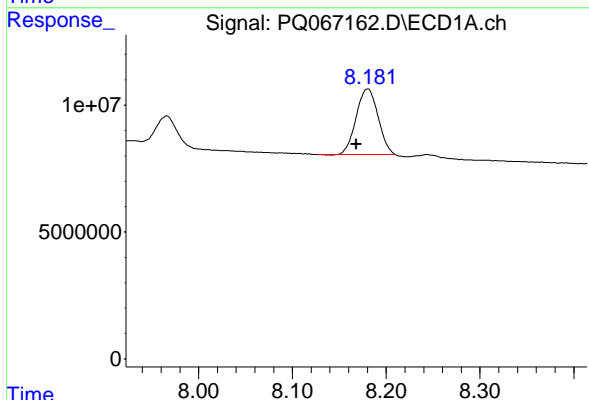
R.T.: 7.655 min
 Delta R.T.: 0.004 min
 Response: 67773573
 Conc: 262.50 ng/ml

Instrument :
 ECD_Q
 ClientSampleId :
 PCB-GPC-BLANK-SPIKE



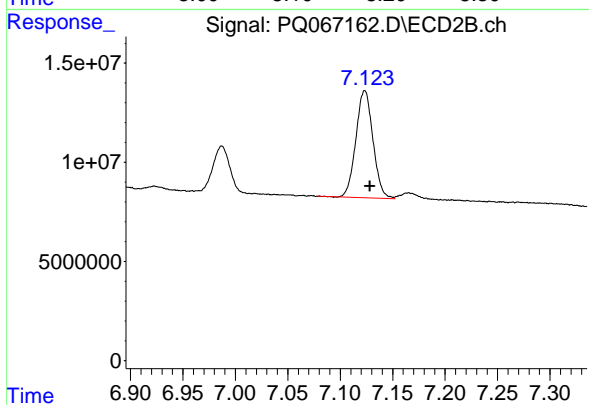
#39 AR-1262-4

R.T.: 6.629 min
 Delta R.T.: -0.009 min
 Response: 198515407
 Conc: 341.07 ng/ml



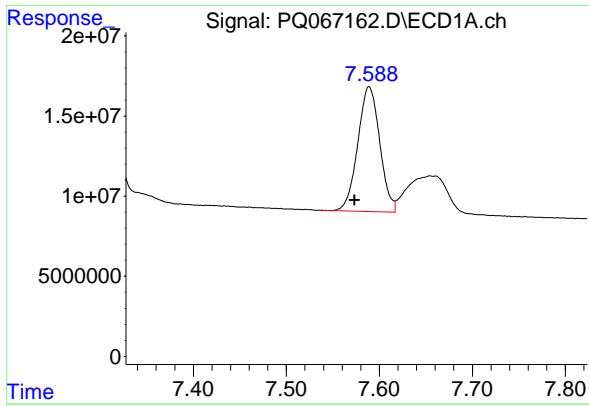
#40 AR-1262-5

R.T.: 8.180 min
 Delta R.T.: 0.012 min
 Response: 42166730
 Conc: 267.73 ng/ml



#40 AR-1262-5

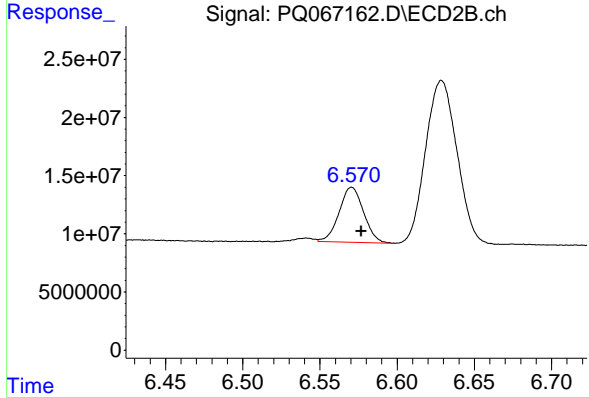
R.T.: 7.123 min
 Delta R.T.: -0.005 min
 Response: 61282337
 Conc: 224.93 ng/ml



#41 AR-1268-1

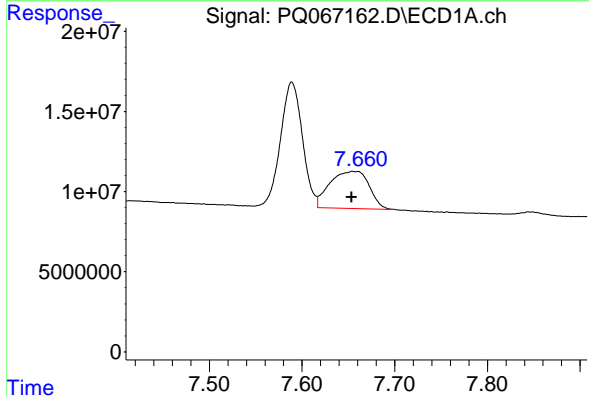
R.T.: 7.589 min
 Delta R.T.: 0.015 min
 Response: 127703484
 Conc: 213.51 ng/ml

Instrument : ECD_Q
 ClientSampleId : PCB-GPC-BLANK-SPIKE



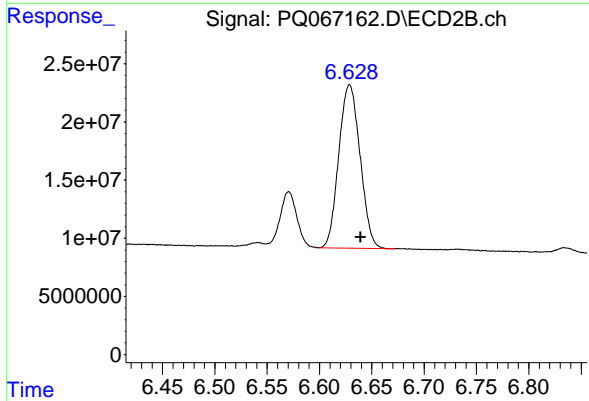
#41 AR-1268-1

R.T.: 6.571 min
 Delta R.T.: -0.006 min
 Response: 51979344
 Conc: 56.16 ng/ml



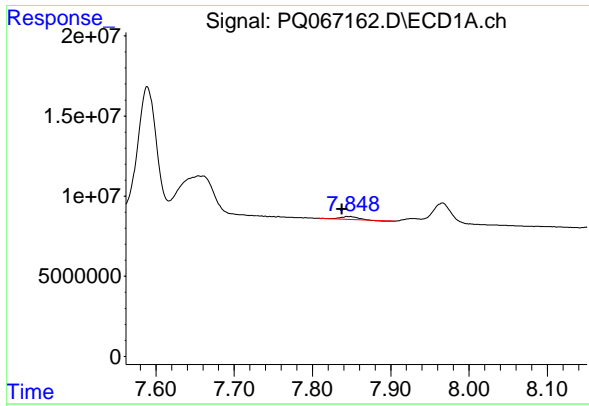
#42 AR-1268-2

R.T.: 7.655 min
 Delta R.T.: 0.001 min
 Response: 67773573
 Conc: 125.87 ng/ml



#42 AR-1268-2

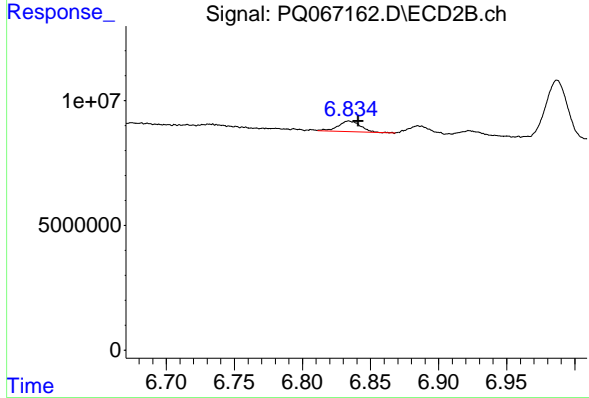
R.T.: 6.629 min
 Delta R.T.: -0.010 min
 Response: 198515407
 Conc: 236.90 ng/ml



#43 AR-1268-3

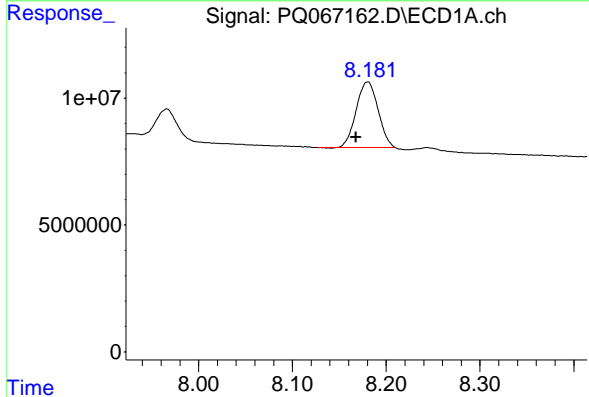
R.T.: 7.844 min
 Delta R.T.: 0.006 min
 Response: 2710265
 Conc: 5.87 ng/ml

Instrument :
 ECD_Q
 ClientSampleId :
 PCB-GPC-BLANK-SPIKE



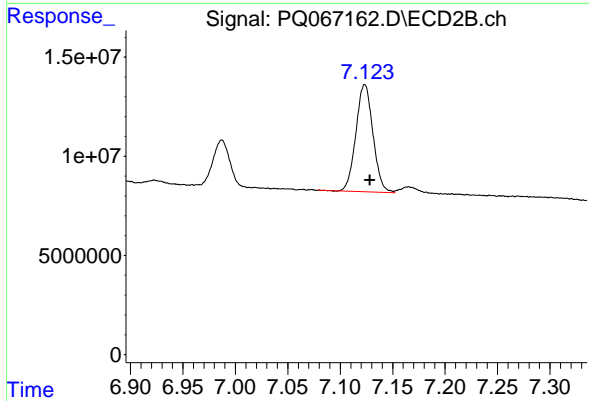
#43 AR-1268-3

R.T.: 6.834 min
 Delta R.T.: -0.007 min
 Response: 4868971
 Conc: 6.58 ng/ml



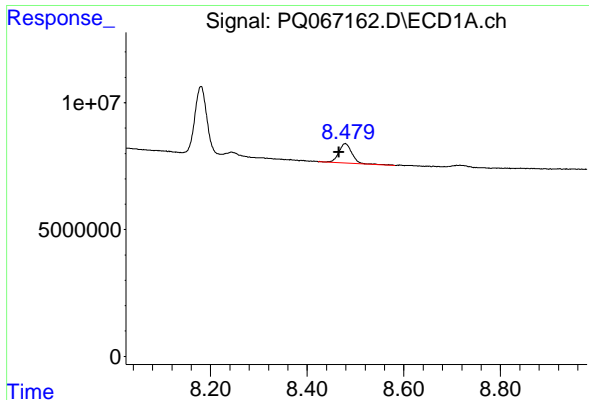
#44 AR-1268-4

R.T.: 8.180 min
 Delta R.T.: 0.013 min
 Response: 42166730
 Conc: 242.73 ng/ml



#44 AR-1268-4

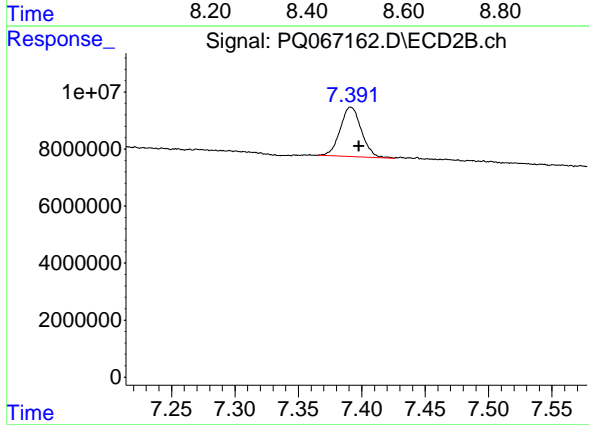
R.T.: 7.123 min
 Delta R.T.: -0.005 min
 Response: 61282337
 Conc: 199.62 ng/ml



#45 AR-1268-5

R.T.: 8.479 min
Delta R.T.: 0.013 min
Response: 14230205
Conc: 10.42 ng/ml

Instrument :
ECD_Q
ClientSampleId :
PCB-GPC-BLANK-SPIKE



#45 AR-1268-5

R.T.: 7.391 min
Delta R.T.: -0.006 min
Response: 20383220
Conc: 9.26 ng/ml