

Data Path : Z:\pestpcbsrv\HPCHEM1\ECD_Q\Data\PQ062525\
 Data File : PQ070408.D
 Signal(s) : Signal #1: ECD1A.ch Signal #2: ECD2B.ch
 Acq On : 24 Jun 2025 17:07
 Operator : YP\AJ
 Sample : Q2126-07
 Misc : AR1262 LOD 25 PPB
 ALS Vial : 11 Sample Multiplier: 1

Instrument :
 ECD_Q
 ClientSampleId :
 LOD-MDL-WATER-01-QT2-2025

Integration File signal 1: autoint1.e
 Integration File signal 2: autoint2.e
 Quant Time: Jun 25 07:31:07 2025
 Quant Method : Z:\pestpcbsrv\HPCHEM1\ECD_Q\Method\PQ062425.M
 Quant Title : GC EXTRACTABLES
 QLast Update : Wed Jun 25 02:08:47 2025
 Response via : Initial Calibration
 Integrator: ChemStation

Volume Inj. : 2 µl
 Signal #1 Phase : ZB-MR1 Signal #2 Phase: ZB-MR2
 Signal #1 Info : 30Mx0.32mmx 0.50µ Signal #2 Info : 30M x 0.32mm x 0.25µm

Compound	RT#1	RT#2	Resp#1	Resp#2	ng/ml	ng/ml

System Monitoring Compounds						
1) SA Tetrachlo...	3.404	2.782	114.1E6	127.8E6	18.639	18.920
2) SA Decachlor...	8.504	7.545	86559367	150.0E6	21.027	20.691
Target Compounds						
3) L1 AR-1016-1	4.482	3.782	392092	342344	2.089	1.648
4) L1 AR-1016-2	4.501	3.803	407384	381012	1.316	1.126
5) L1 AR-1016-3	4.561	3.972	760410	251011	3.779	1.338 #
6) L1 AR-1016-4	4.650	4.007	267229	538365	1.688	3.069 #
7) L1 AR-1016-5	4.938	4.205	168742	161074	1.038	0.798
8) L2 AR-1221-1	3.609	2.992	311291	105490	3.631	1.032 #
9) L2 AR-1221-2	3.677	3.051	1766700	2187669	27.335	27.734
10) L2 AR-1221-3	3.738	3.153f	57657	102188	0.297	0.451 #
11) L3 AR-1232-1	3.738	3.153f	57657	102188	0.407	0.613 #
12) L3 AR-1232-2	4.185f	3.803	187135	381012	2.309	2.388
13) L3 AR-1232-3	4.501	3.972	407384	251011	2.855	2.856
14) L3 AR-1232-4	4.650	4.045	267229	262712	3.717	3.405
15) L3 AR-1232-5	4.798	4.205	195613	161074	3.273	1.923 #
16) L4 AR-1242-1	4.482	3.782	392092	342344	2.534	1.951
17) L4 AR-1242-2	4.501	3.803	407384	381012	1.551	1.368
18) L4 AR-1242-3	4.561	3.972	760410	251011	4.476	1.597 #
19) L4 AR-1242-4	4.650	4.045	267229	262712	1.980	1.725
20) L4 AR-1242-5	5.355	4.541	351312	2050218	2.612	11.236 #
21) L5 AR-1248-1	4.482	3.782	392092	342344	3.166	2.436
22) L5 AR-1248-2	4.748	4.007	300190	538365	1.627	2.306 #
23) L5 AR-1248-3	4.938	4.045	168742	262712	0.764	1.167 #
24) L5 AR-1248-4	5.327	4.205	1521984	161074	6.858	0.591 #
25) L5 AR-1248-5	5.355	4.578	351312	602473	1.520	2.406 #
26) L6 AR-1254-1	5.296	4.541	1482549	2050218	5.993	5.061
27) L6 AR-1254-2	5.512	4.687	1675121	1981813	4.460	5.488
28) L6 AR-1254-3	5.860	5.085	505710	10159068	1.302	17.964 #
29) L6 AR-1254-4	6.160	5.294	4752025	206220	19.090	0.676 #
30) L6 AR-1254-5	6.546	5.697	5504877	6240848	18.532	12.126 #
31) L7 AR-1260-1	6.024	5.197	5480724	7107833	18.967	18.607
32) L7 AR-1260-2	6.281	5.386	5889850	8867853	18.476	20.241
33) L7 AR-1260-3	6.632	5.528	8111823	9228493	31.238	21.389 #
34) L7 AR-1260-4	6.846	5.988	7211677	13372079	26.468	36.439 #
35) L7 AR-1260-5	7.152	6.232	13215051	22247339	26.525	26.766
36) L8 AR-1262-1	6.846	5.741	7211677	13306232	20.481	24.317
37) L8 AR-1262-2	7.152	5.988	13215051	13372079	23.330	26.294
38) L8 AR-1262-3	7.425	6.510	7252476	8854704	18.617	22.554
39) L8 AR-1262-4	7.498	6.569	6447830	15782151	20.151	22.528
40) L8 AR-1262-5	7.995	7.060	4024977	7146924	21.485	22.537
41) L9 AR-1268-1	7.425	6.510	7252476	8854704	10.064	7.640

Data Path : Z:\pestpcbsrv\HPCHEM1\ECD_Q\Data\PQ062525\
 Data File : PQ070408.D
 Signal(s) : Signal #1: ECD1A.ch Signal #2: ECD2B.ch
 Acq On : 24 Jun 2025 17:07
 Operator : YP\AJ
 Sample : Q2126-07
 Misc : AR1262 LOD 25 PPB
 ALS Vial : 11 Sample Multiplier: 1

Instrument :
 ECD_Q
 ClientSampleId :
 LOD-MDL-WATER-01-QT2-2025

Integration File signal 1: autoint1.e
 Integration File signal 2: autoint2.e
 Quant Time: Jun 25 07:31:07 2025
 Quant Method : Z:\pestpcbsrv\HPCHEM1\ECD_Q\Method\PQ062425.M
 Quant Title : GC EXTRACTABLES
 QLast Update : Wed Jun 25 02:08:47 2025
 Response via : Initial Calibration
 Integrator: ChemStation

Volume Inj. : 2 µl
 Signal #1 Phase : ZB-MR1 Signal #2 Phase: ZB-MR2
 Signal #1 Info : 30Mx0.32mmx 0.50µ Signal #2 Info : 30M x 0.32mm x 0.25µm

	Compound	RT#1	RT#2	Resp#1	Resp#2	ng/ml	ng/ml
42)	L9 AR-1268-2	7.498	6.569	6447830	15782151	9.707	14.719 #
43)	L9 AR-1268-3	7.679	6.772	601689	1414014	1.061	1.481 #
44)	L9 AR-1268-4	7.995	7.060	4024977	7146924	19.511	19.001
45)	L9 AR-1268-5	8.277	7.327	2188758	3161977	1.367	1.203

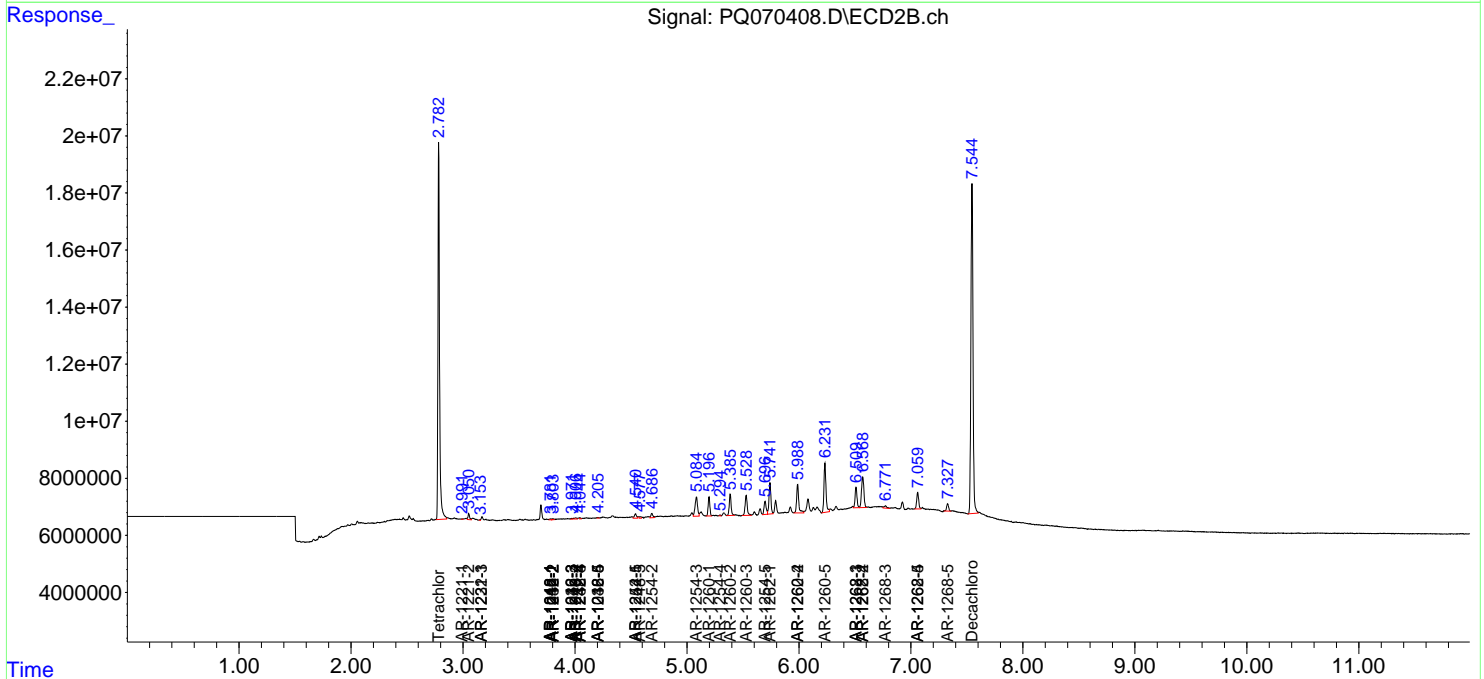
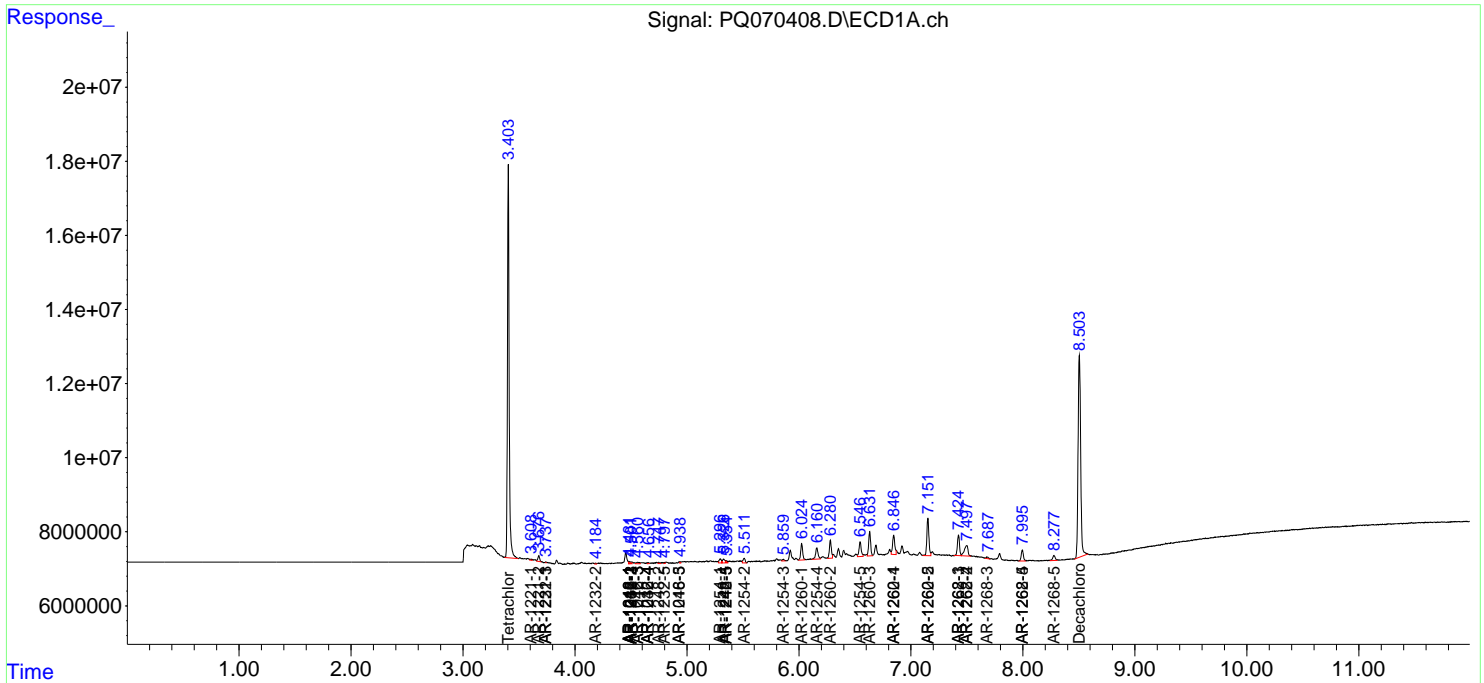
(f)=RT Delta > 1/2 Window (#)=Amounts differ by > 25% (m)=manual int.

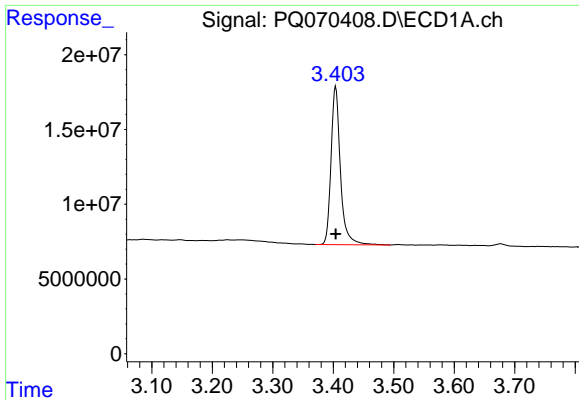
Data Path : Z:\pestpcbsrv\HPCHEM1\ECD_Q\Data\PQ062525\
 Data File : PQ070408.D
 Signal(s) : Signal #1: ECD1A.ch Signal #2: ECD2B.ch
 Acq On : 24 Jun 2025 17:07
 Operator : YP\AJ
 Sample : Q2126-07
 Misc : AR1262 LOD 25 PPB
 ALS Vial : 11 Sample Multiplier: 1

Instrument :
 ECD_Q
ClientSampleId :
 LOD-MDL-WATER-01-QT2-2025

Integration File signal 1: autoint1.e
 Integration File signal 2: autoint2.e
 Quant Time: Jun 25 07:31:07 2025
 Quant Method : Z:\pestpcbsrv\HPCHEM1\ECD_Q\Method\PQ062425.M
 Quant Title : GC EXTRACTABLES
 QLast Update : Wed Jun 25 02:08:47 2025
 Response via : Initial Calibration
 Integrator: ChemStation

Volume Inj. : 2 µl
 Signal #1 Phase : ZB-MR1 Signal #2 Phase: ZB-MR2
 Signal #1 Info : 30Mx0.32mmx 0.50µ Signal #2 Info : 30M x 0.32mm x 0.25µm

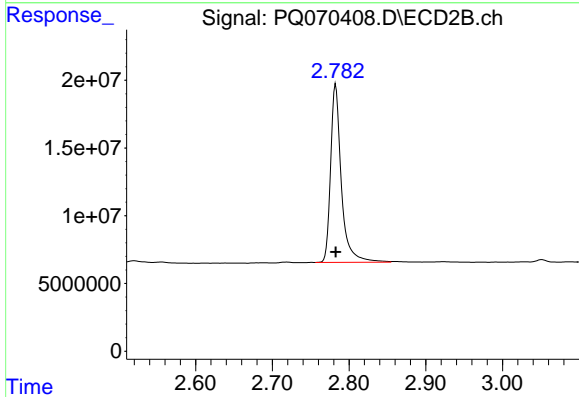




#1 Tetrachloro-m-xylene

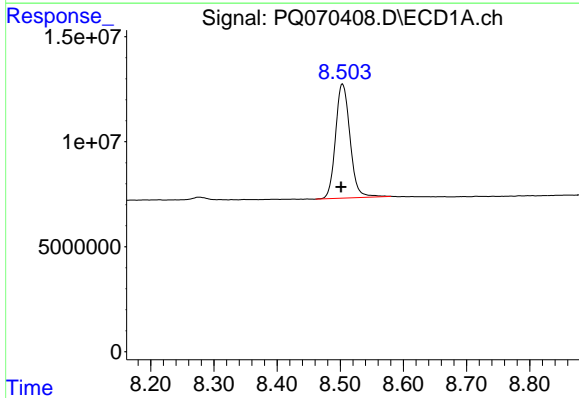
R.T.: 3.404 min
 Delta R.T.: 0.000 min
 Response: 114101006
 Conc: 18.64 ng/ml

Instrument :
 ECD_Q
 ClientSampleId :
 LOD-MDL-WATER-01-QT2-2025



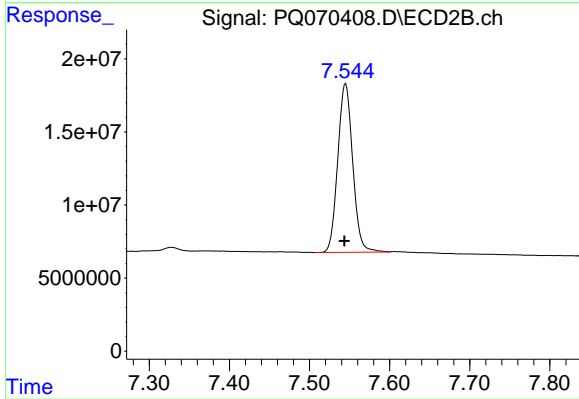
#1 Tetrachloro-m-xylene

R.T.: 2.782 min
 Delta R.T.: 0.000 min
 Response: 127771477
 Conc: 18.92 ng/ml



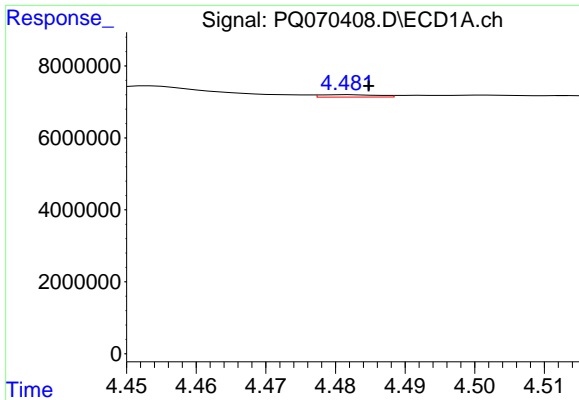
#2 Decachlorobiphenyl

R.T.: 8.504 min
 Delta R.T.: 0.002 min
 Response: 86559367
 Conc: 21.03 ng/ml



#2 Decachlorobiphenyl

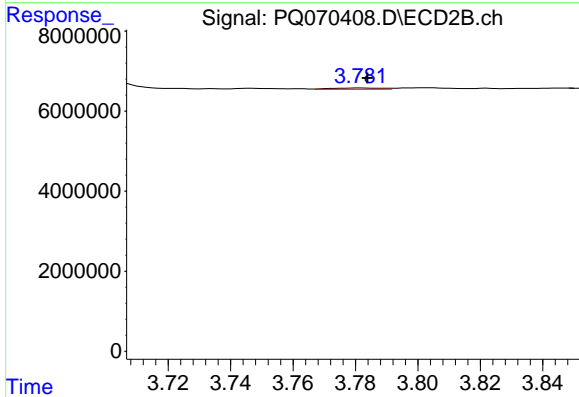
R.T.: 7.545 min
 Delta R.T.: 0.002 min
 Response: 149997410
 Conc: 20.69 ng/ml



#3 AR-1016-1

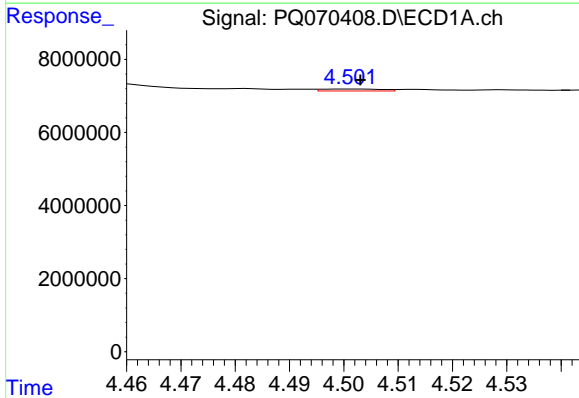
R.T.: 4.482 min
 Delta R.T.: -0.003 min
 Response: 392092
 Conc: 2.09 ng/ml

Instrument :
 ECD_Q
 ClientSampleId :
 LOD-MDL-WATER-01-QT2-2025



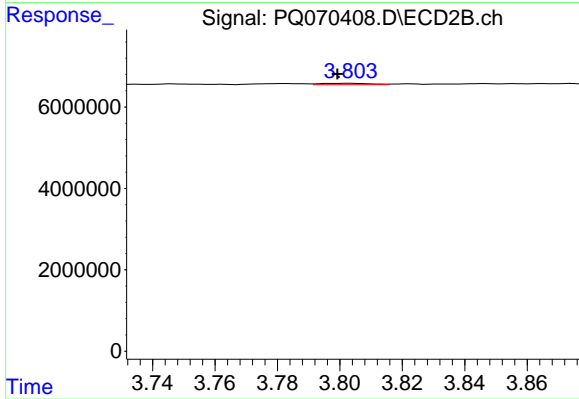
#3 AR-1016-1

R.T.: 3.782 min
 Delta R.T.: -0.002 min
 Response: 342344
 Conc: 1.65 ng/ml



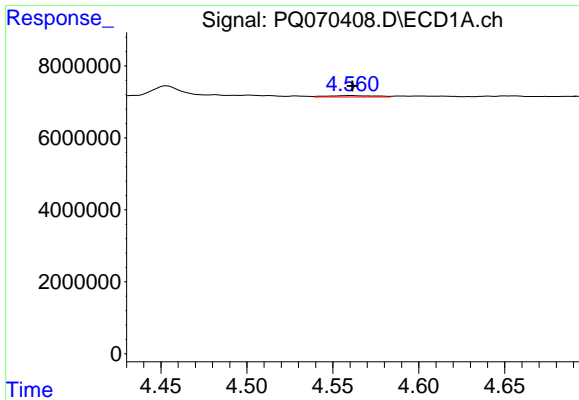
#4 AR-1016-2

R.T.: 4.501 min
 Delta R.T.: -0.002 min
 Response: 407384
 Conc: 1.32 ng/ml



#4 AR-1016-2

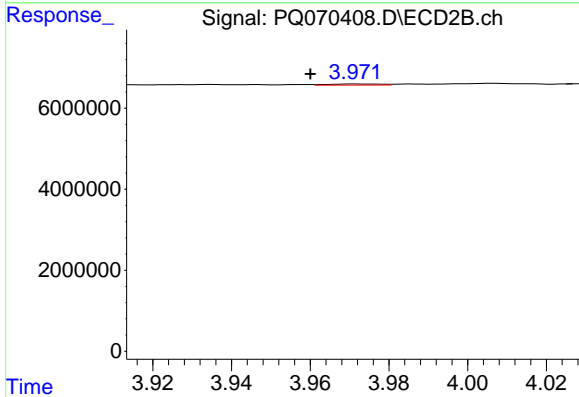
R.T.: 3.803 min
 Delta R.T.: 0.004 min
 Response: 381012
 Conc: 1.13 ng/ml



#5 AR-1016-3

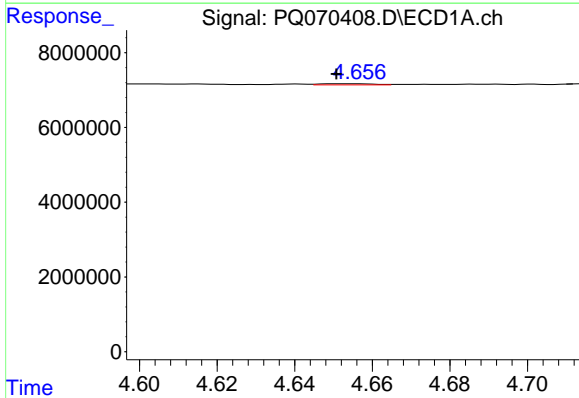
R.T.: 4.561 min
 Delta R.T.: 0.000 min
 Response: 760410
 Conc: 3.78 ng/ml

Instrument :
 ECD_Q
 ClientSampleId :
 LOD-MDL-WATER-01-QT2-2025



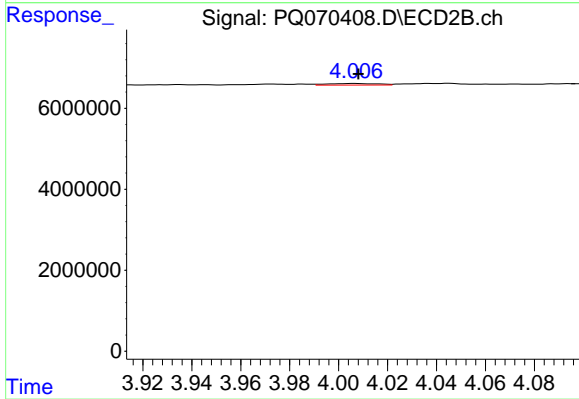
#5 AR-1016-3

R.T.: 3.972 min
 Delta R.T.: 0.012 min
 Response: 251011
 Conc: 1.34 ng/ml



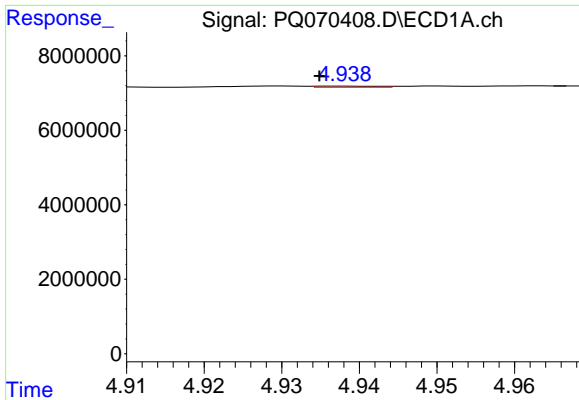
#6 AR-1016-4

R.T.: 4.650 min
 Delta R.T.: 0.000 min
 Response: 267229
 Conc: 1.69 ng/ml



#6 AR-1016-4

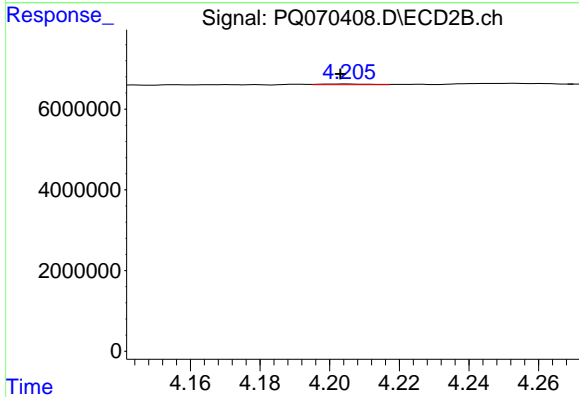
R.T.: 4.007 min
 Delta R.T.: -0.001 min
 Response: 538365
 Conc: 3.07 ng/ml



#7 AR-1016-5

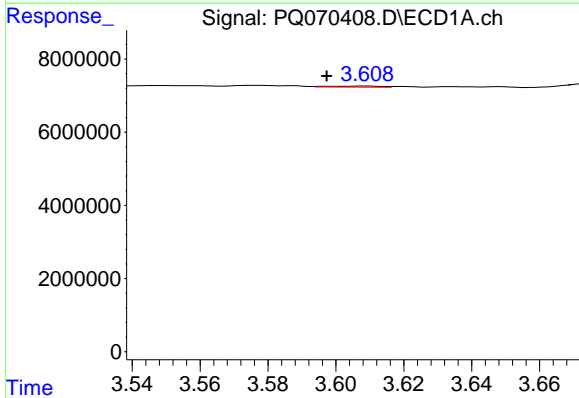
R.T.: 4.938 min
 Delta R.T.: 0.003 min
 Response: 168742
 Conc: 1.04 ng/ml

Instrument : ECD_Q
 ClientSampleId : LOD-MDL-WATER-01-QT2-2025



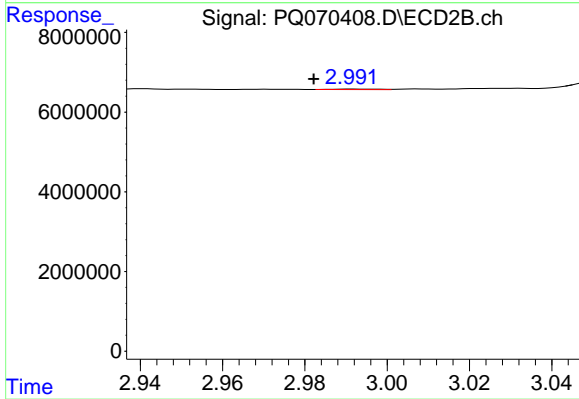
#7 AR-1016-5

R.T.: 4.205 min
 Delta R.T.: 0.002 min
 Response: 161074
 Conc: 0.80 ng/ml



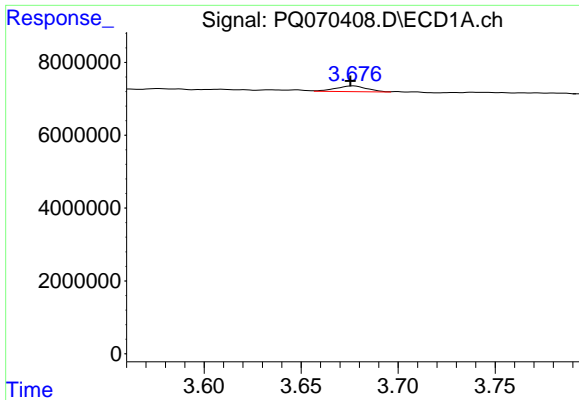
#8 AR-1221-1

R.T.: 3.609 min
 Delta R.T.: 0.012 min
 Response: 311291
 Conc: 3.63 ng/ml



#8 AR-1221-1

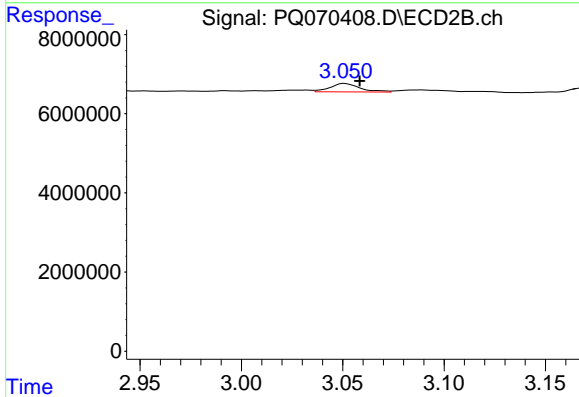
R.T.: 2.992 min
 Delta R.T.: 0.009 min
 Response: 105490
 Conc: 1.03 ng/ml



#9 AR-1221-2

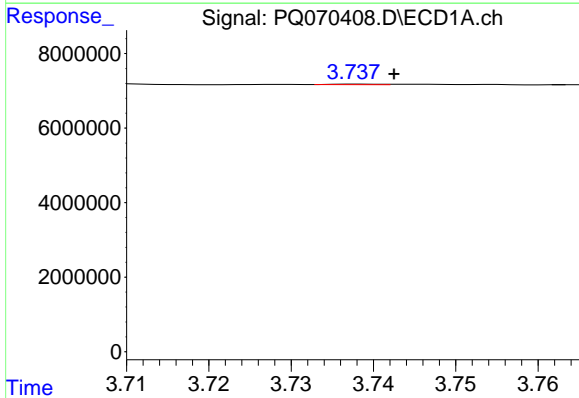
R.T.: 3.677 min
 Delta R.T.: 0.002 min
 Response: 1766700
 Conc: 27.34 ng/ml

Instrument : ECD_Q
 ClientSampleId : LOD-MDL-WATER-01-QT2-2025



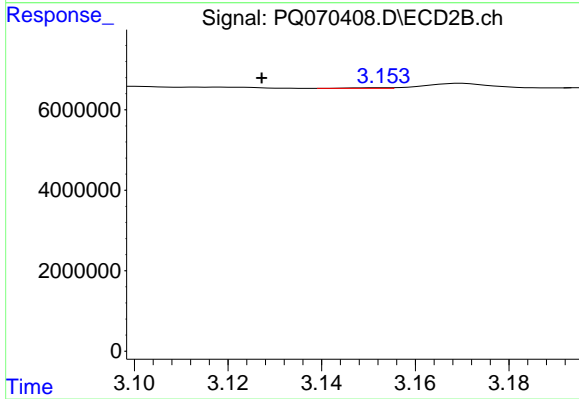
#9 AR-1221-2

R.T.: 3.051 min
 Delta R.T.: -0.008 min
 Response: 2187669
 Conc: 27.73 ng/ml



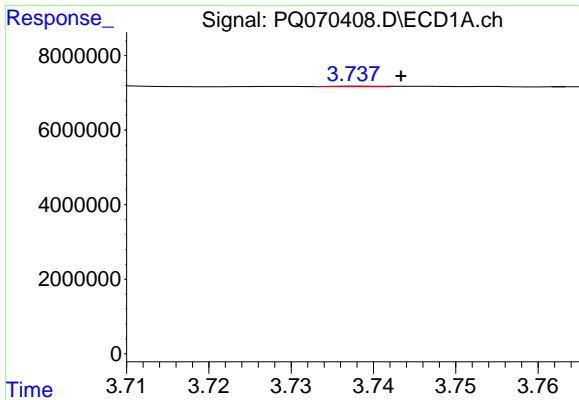
#10 AR-1221-3

R.T.: 3.738 min
 Delta R.T.: -0.004 min
 Response: 57657
 Conc: 0.30 ng/ml



#10 AR-1221-3

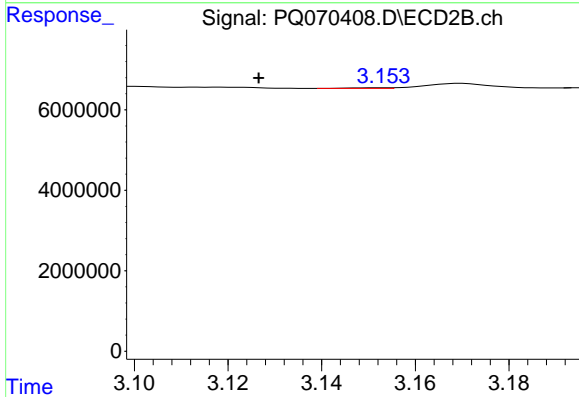
R.T.: 3.153 min
 Delta R.T.: 0.026 min
 Response: 102188
 Conc: 0.45 ng/ml



#11 AR-1232-1

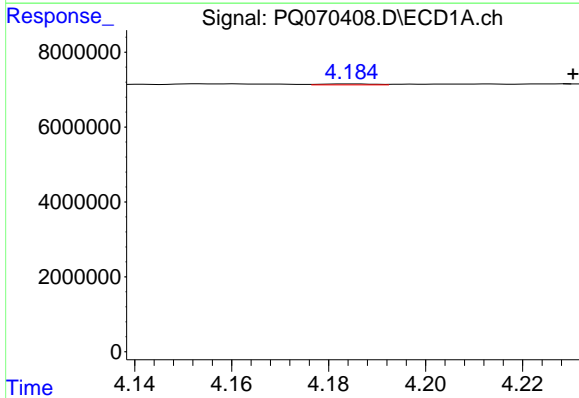
R.T.: 3.738 min
Delta R.T.: -0.005 min
Response: 57657
Conc: 0.41 ng/ml

Instrument :
ECD_Q
ClientSampleId :
LOD-MDL-WATER-01-QT2-2025



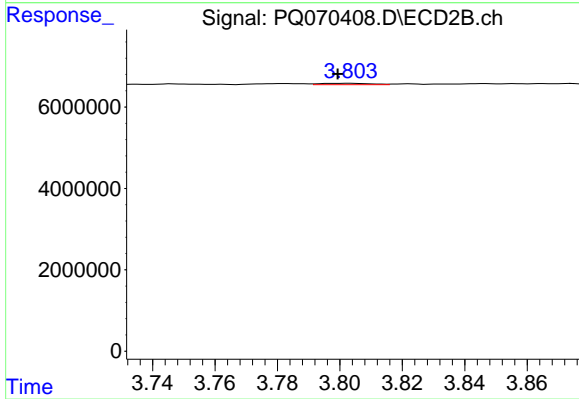
#11 AR-1232-1

R.T.: 3.153 min
Delta R.T.: 0.026 min
Response: 102188
Conc: 0.61 ng/ml



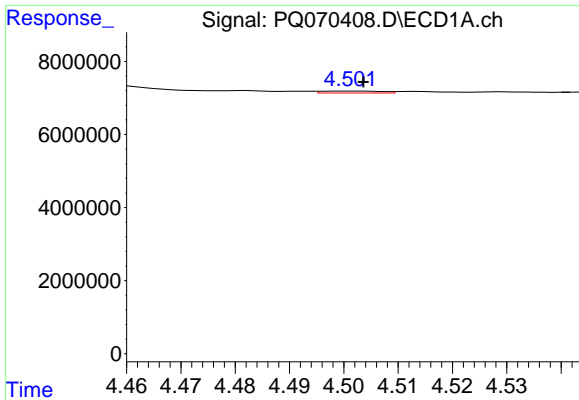
#12 AR-1232-2

R.T.: 4.185 min
Delta R.T.: -0.045 min
Response: 187135
Conc: 2.31 ng/ml



#12 AR-1232-2

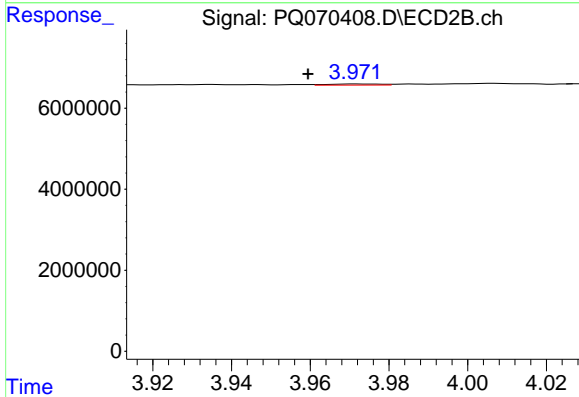
R.T.: 3.803 min
Delta R.T.: 0.004 min
Response: 381012
Conc: 2.39 ng/ml



#13 AR-1232-3

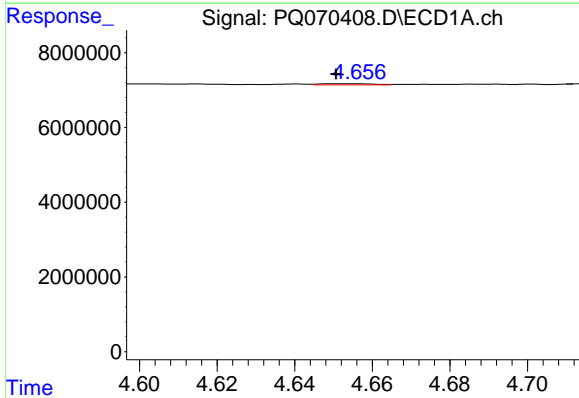
R.T.: 4.501 min
 Delta R.T.: -0.002 min
 Response: 407384
 Conc: 2.85 ng/ml

Instrument : ECD_Q
 ClientSampleId : LOD-MDL-WATER-01-QT2-2025



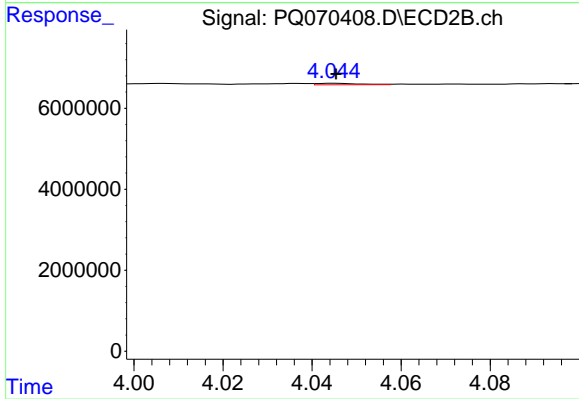
#13 AR-1232-3

R.T.: 3.972 min
 Delta R.T.: 0.012 min
 Response: 251011
 Conc: 2.86 ng/ml



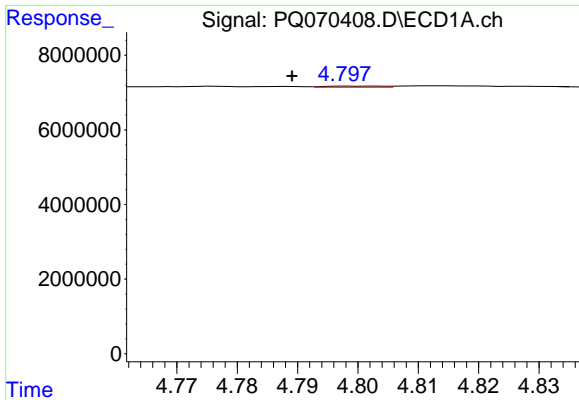
#14 AR-1232-4

R.T.: 4.650 min
 Delta R.T.: 0.000 min
 Response: 267229
 Conc: 3.72 ng/ml



#14 AR-1232-4

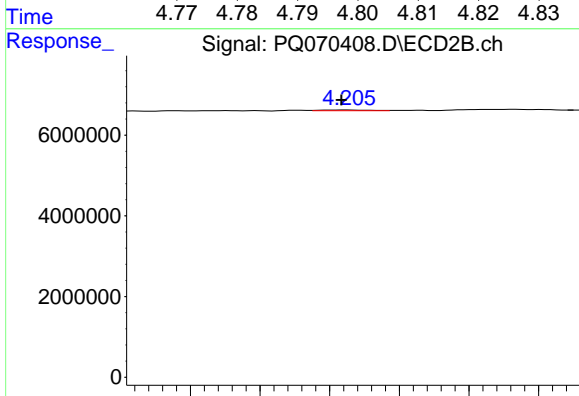
R.T.: 4.045 min
 Delta R.T.: 0.000 min
 Response: 262712
 Conc: 3.41 ng/ml



#15 AR-1232-5

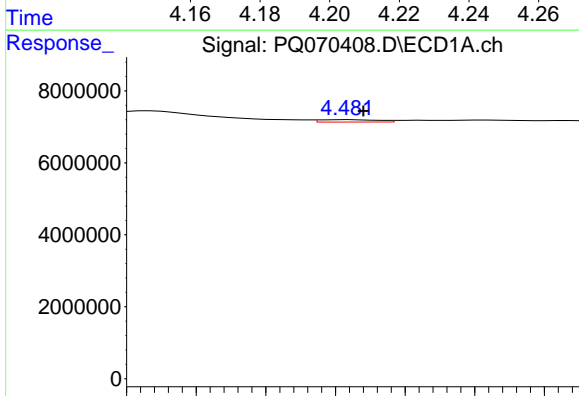
R.T.: 4.798 min
 Delta R.T.: 0.009 min
 Response: 195613
 Conc: 3.27 ng/ml

Instrument :
 ECD_Q
 ClientSampleId :
 LOD-MDL-WATER-01-QT2-2025



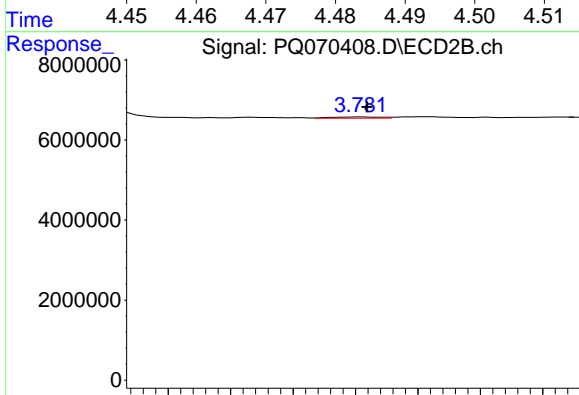
#15 AR-1232-5

R.T.: 4.205 min
 Delta R.T.: 0.002 min
 Response: 161074
 Conc: 1.92 ng/ml



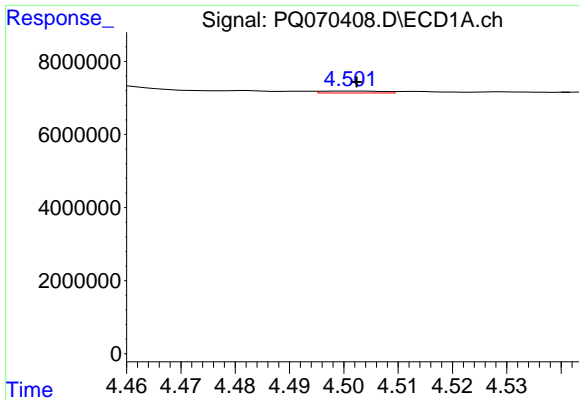
#16 AR-1242-1

R.T.: 4.482 min
 Delta R.T.: -0.002 min
 Response: 392092
 Conc: 2.53 ng/ml



#16 AR-1242-1

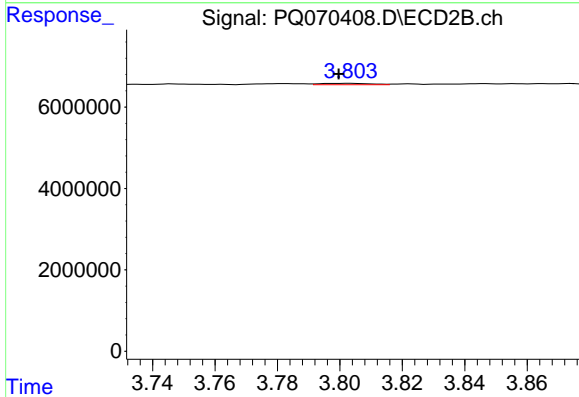
R.T.: 3.782 min
 Delta R.T.: -0.002 min
 Response: 342344
 Conc: 1.95 ng/ml



#17 AR-1242-2

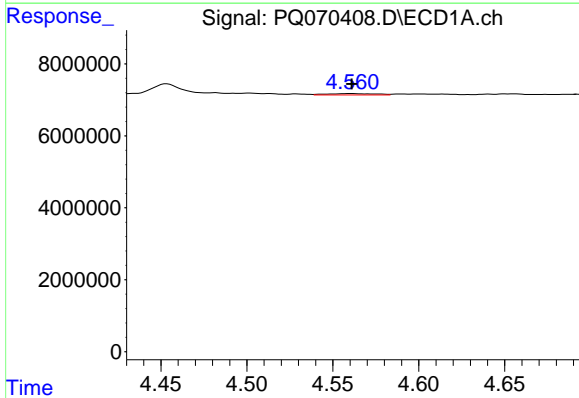
R.T.: 4.501 min
 Delta R.T.: 0.000 min
 Response: 407384
 Conc: 1.55 ng/ml

Instrument : ECD_Q
 ClientSampleId : LOD-MDL-WATER-01-QT2-2025



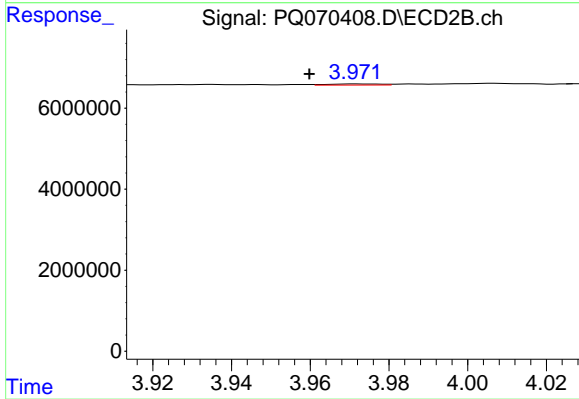
#17 AR-1242-2

R.T.: 3.803 min
 Delta R.T.: 0.004 min
 Response: 381012
 Conc: 1.37 ng/ml



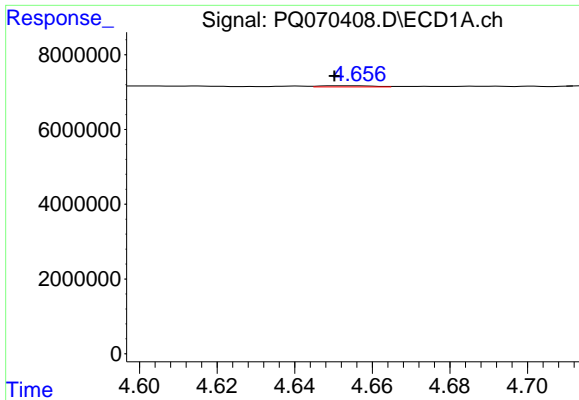
#18 AR-1242-3

R.T.: 4.561 min
 Delta R.T.: 0.000 min
 Response: 760410
 Conc: 4.48 ng/ml



#18 AR-1242-3

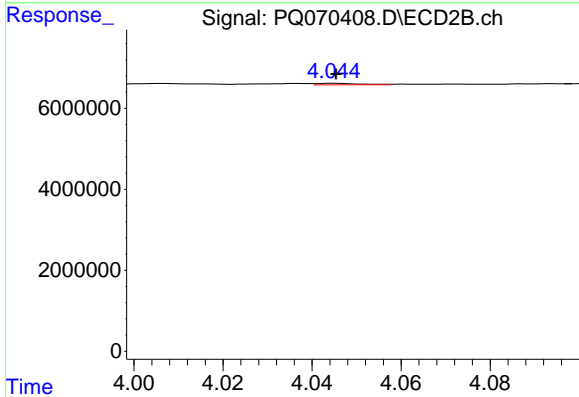
R.T.: 3.972 min
 Delta R.T.: 0.012 min
 Response: 251011
 Conc: 1.60 ng/ml



#19 AR-1242-4

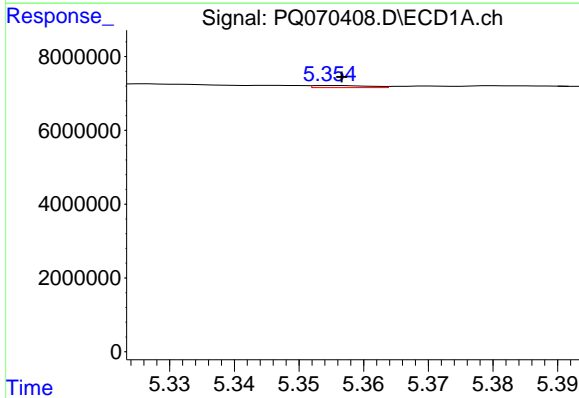
R.T.: 4.650 min
 Delta R.T.: 0.000 min
 Response: 267229
 Conc: 1.98 ng/ml

Instrument : ECD_Q
 ClientSampleId : LOD-MDL-WATER-01-QT2-2025



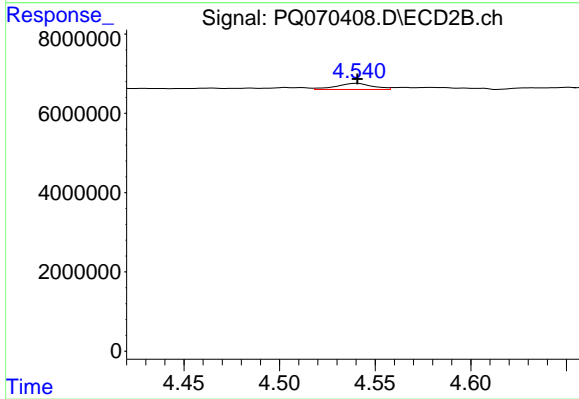
#19 AR-1242-4

R.T.: 4.045 min
 Delta R.T.: 0.000 min
 Response: 262712
 Conc: 1.73 ng/ml



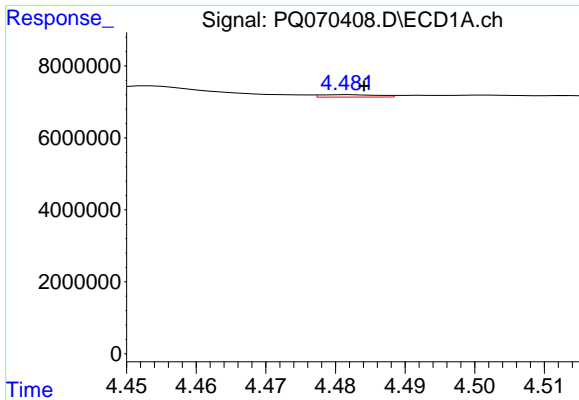
#20 AR-1242-5

R.T.: 5.355 min
 Delta R.T.: -0.001 min
 Response: 351312
 Conc: 2.61 ng/ml



#20 AR-1242-5

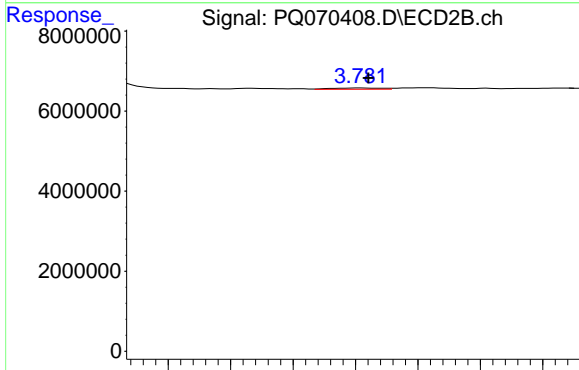
R.T.: 4.541 min
 Delta R.T.: 0.000 min
 Response: 2050218
 Conc: 11.24 ng/ml



#21 AR-1248-1

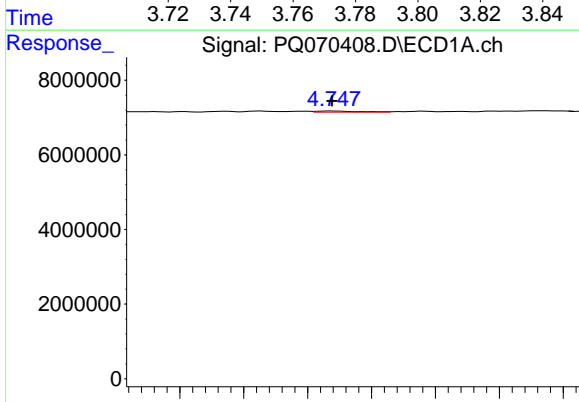
R.T.: 4.482 min
 Delta R.T.: -0.002 min
 Response: 392092
 Conc: 3.17 ng/ml

Instrument :
 ECD_Q
 ClientSampleId :
 LOD-MDL-WATER-01-QT2-2025



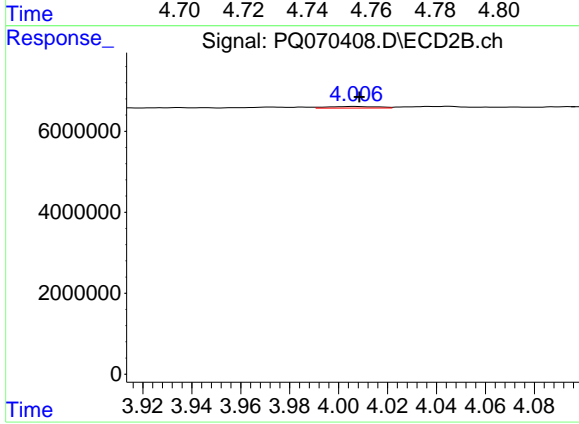
#21 AR-1248-1

R.T.: 3.782 min
 Delta R.T.: -0.002 min
 Response: 342344
 Conc: 2.44 ng/ml



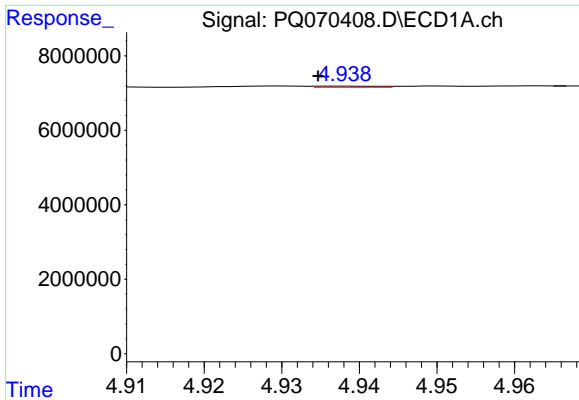
#22 AR-1248-2

R.T.: 4.748 min
 Delta R.T.: 0.000 min
 Response: 300190
 Conc: 1.63 ng/ml



#22 AR-1248-2

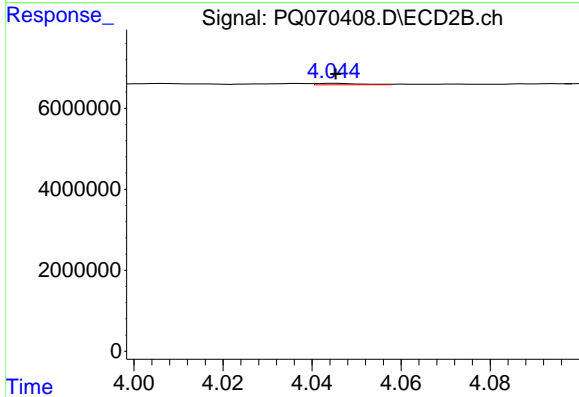
R.T.: 4.007 min
 Delta R.T.: -0.002 min
 Response: 538365
 Conc: 2.31 ng/ml



#23 AR-1248-3

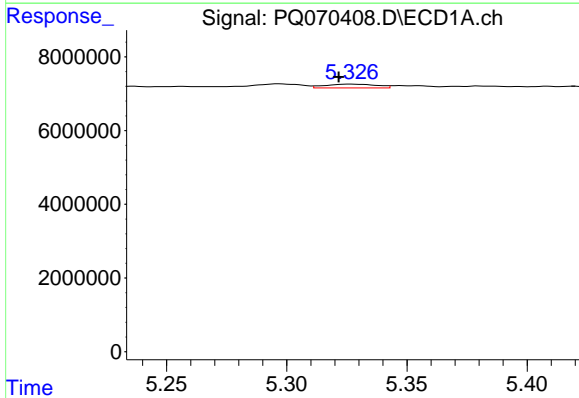
R.T.: 4.938 min
 Delta R.T.: 0.004 min
 Response: 168742
 Conc: 0.76 ng/ml

Instrument : ECD_Q
 ClientSampleId : LOD-MDL-WATER-01-QT2-2025



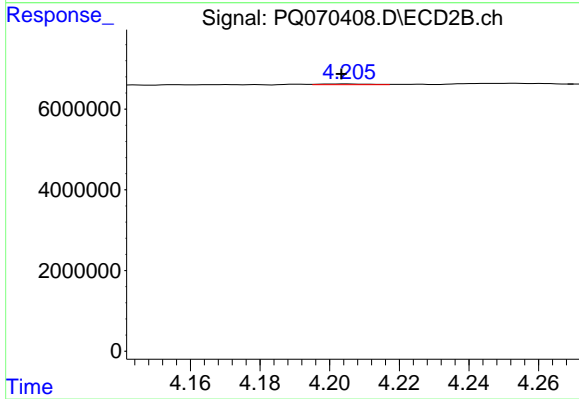
#23 AR-1248-3

R.T.: 4.045 min
 Delta R.T.: 0.000 min
 Response: 262712
 Conc: 1.17 ng/ml



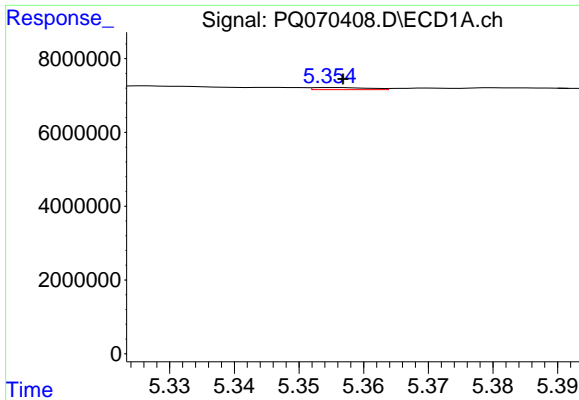
#24 AR-1248-4

R.T.: 5.327 min
 Delta R.T.: 0.005 min
 Response: 1521984
 Conc: 6.86 ng/ml



#24 AR-1248-4

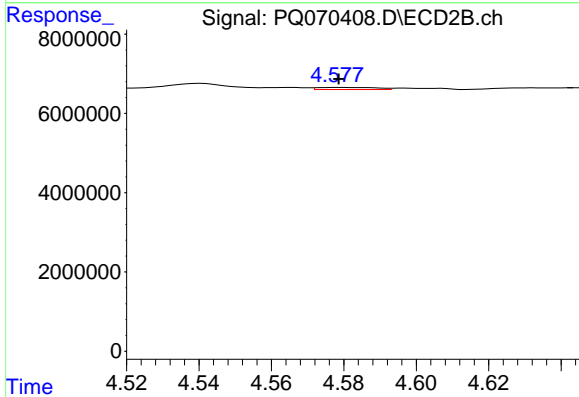
R.T.: 4.205 min
 Delta R.T.: 0.002 min
 Response: 161074
 Conc: 0.59 ng/ml



#25 AR-1248-5

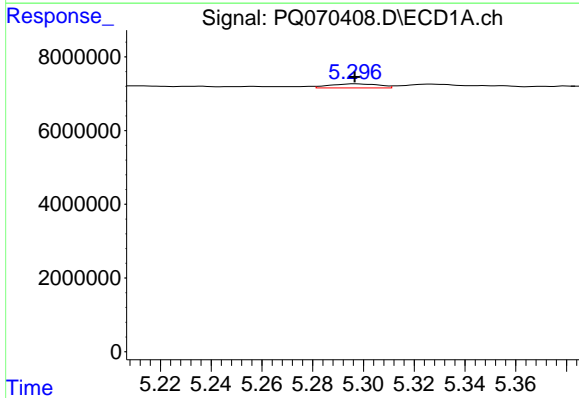
R.T.: 5.355 min
 Delta R.T.: -0.002 min
 Response: 351312
 Conc: 1.52 ng/ml

Instrument :
 ECD_Q
 ClientSampleId :
 LOD-MDL-WATER-01-QT2-2025



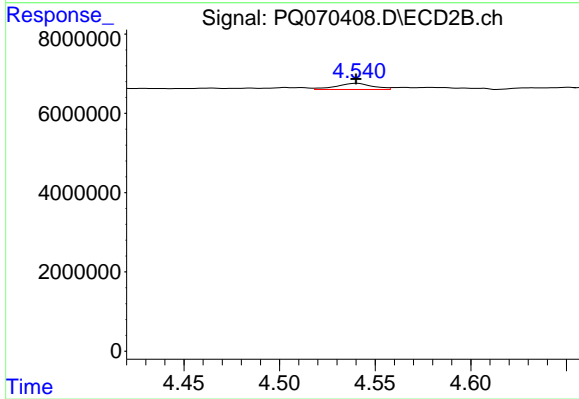
#25 AR-1248-5

R.T.: 4.578 min
 Delta R.T.: 0.000 min
 Response: 602473
 Conc: 2.41 ng/ml



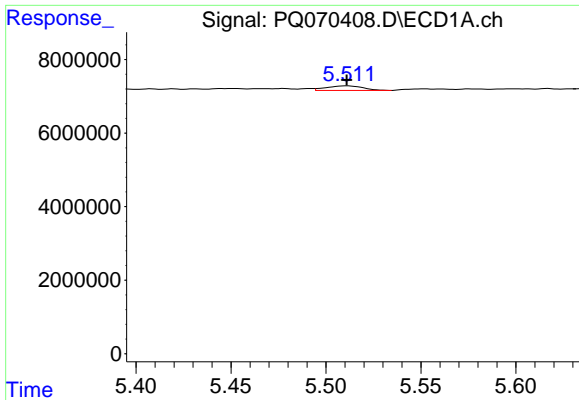
#26 AR-1254-1

R.T.: 5.296 min
 Delta R.T.: 0.000 min
 Response: 1482549
 Conc: 5.99 ng/ml



#26 AR-1254-1

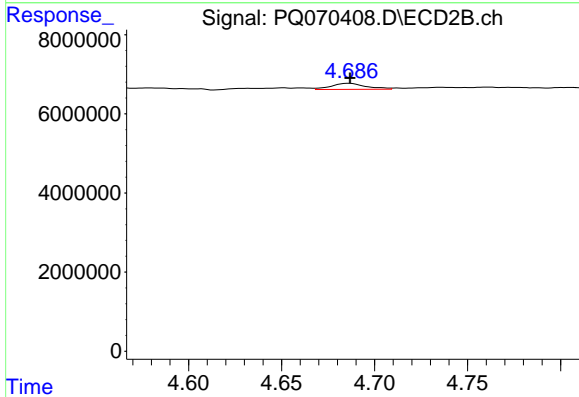
R.T.: 4.541 min
 Delta R.T.: 0.000 min
 Response: 2050218
 Conc: 5.06 ng/ml



#27 AR-1254-2

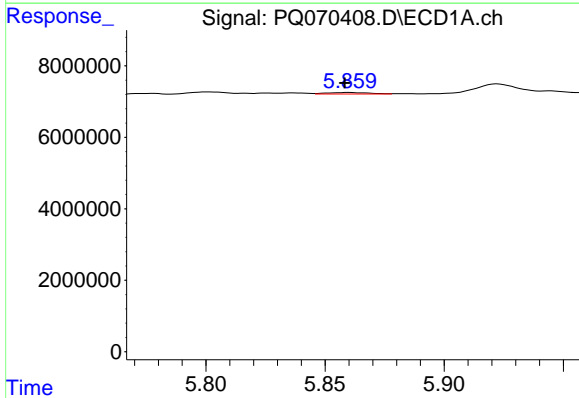
R.T.: 5.512 min
 Delta R.T.: 0.000 min
 Response: 1675121
 Conc: 4.46 ng/ml

Instrument : ECD_Q
 ClientSampleId : LOD-MDL-WATER-01-QT2-2025



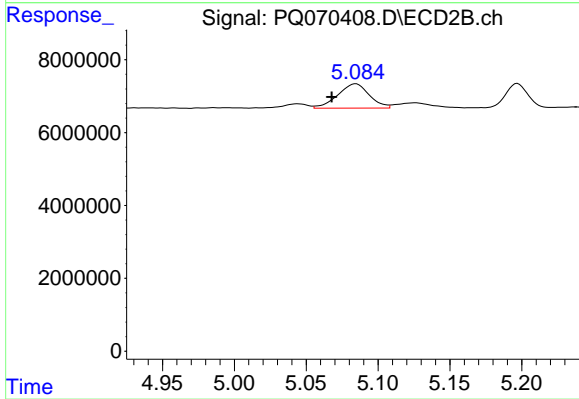
#27 AR-1254-2

R.T.: 4.687 min
 Delta R.T.: 0.000 min
 Response: 1981813
 Conc: 5.49 ng/ml



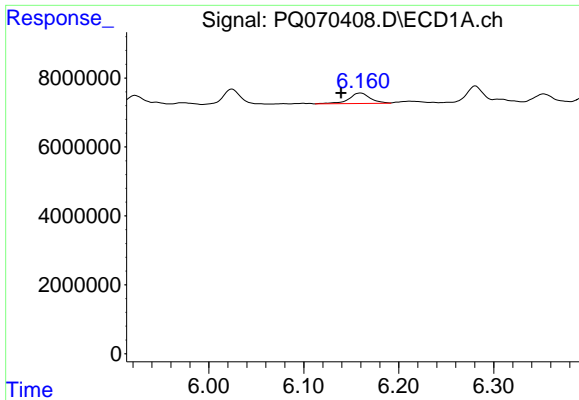
#28 AR-1254-3

R.T.: 5.860 min
 Delta R.T.: 0.002 min
 Response: 505710
 Conc: 1.30 ng/ml



#28 AR-1254-3

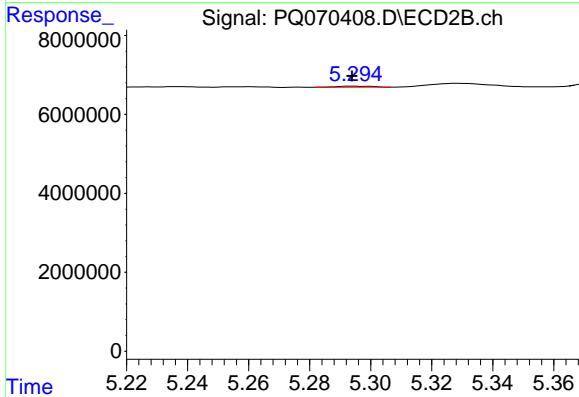
R.T.: 5.085 min
 Delta R.T.: 0.017 min
 Response: 10159068
 Conc: 17.96 ng/ml



#29 AR-1254-4

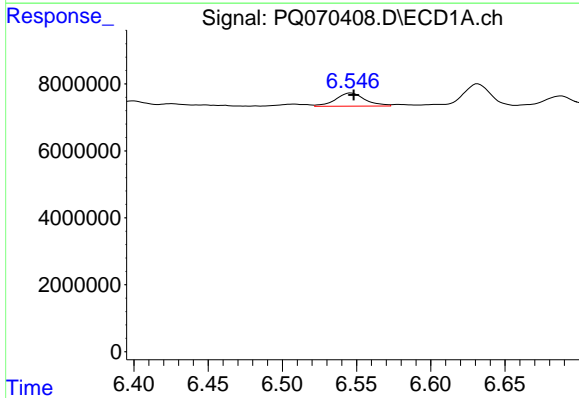
R.T.: 6.160 min
 Delta R.T.: 0.021 min
 Response: 4752025
 Conc: 19.09 ng/ml

Instrument :
 ECD_Q
 ClientSampleId :
 LOD-MDL-WATER-01-QT2-2025



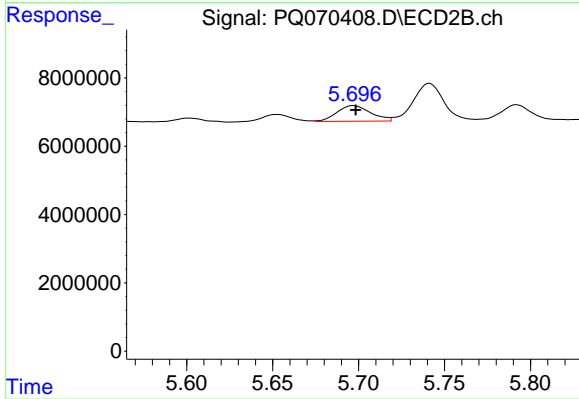
#29 AR-1254-4

R.T.: 5.294 min
 Delta R.T.: 0.000 min
 Response: 206220
 Conc: 0.68 ng/ml



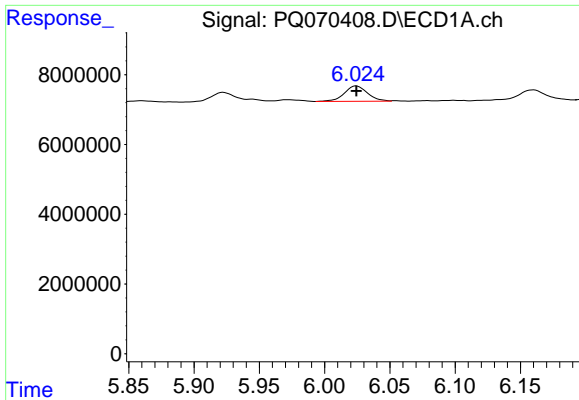
#30 AR-1254-5

R.T.: 6.546 min
 Delta R.T.: -0.002 min
 Response: 5504877
 Conc: 18.53 ng/ml



#30 AR-1254-5

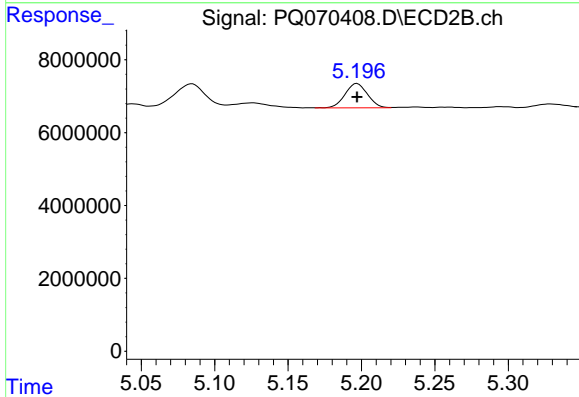
R.T.: 5.697 min
 Delta R.T.: -0.001 min
 Response: 6240848
 Conc: 12.13 ng/ml



#31 AR-1260-1

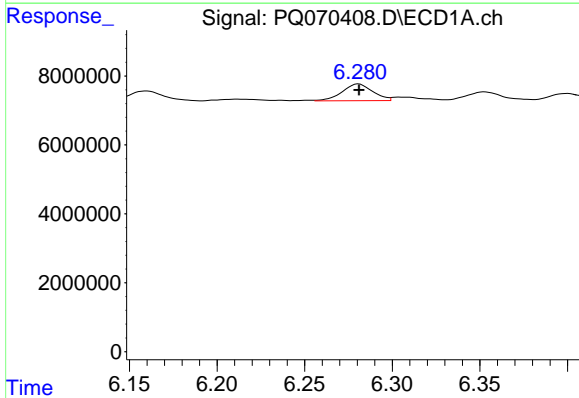
R.T.: 6.024 min
 Delta R.T.: 0.000 min
 Response: 5480724
 Conc: 18.97 ng/ml

Instrument :
 ECD_Q
 ClientSampleId :
 LOD-MDL-WATER-01-QT2-2025



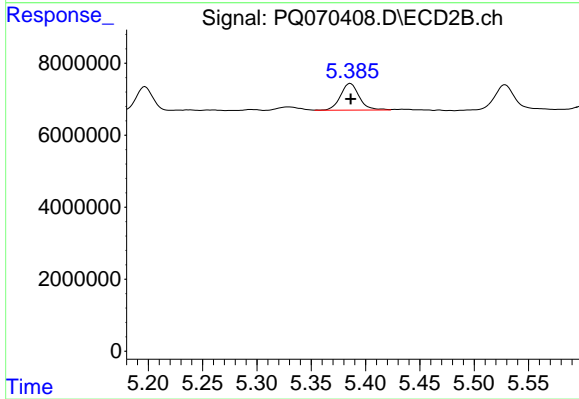
#31 AR-1260-1

R.T.: 5.197 min
 Delta R.T.: 0.000 min
 Response: 7107833
 Conc: 18.61 ng/ml



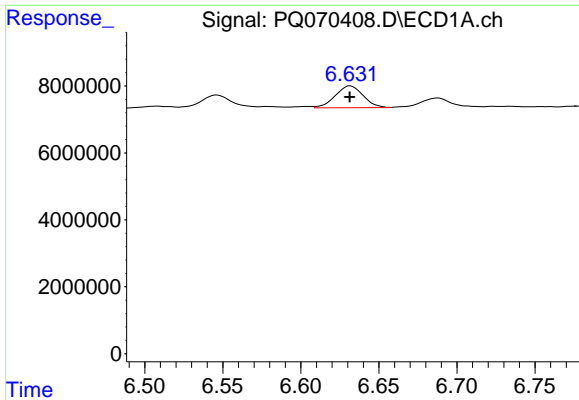
#32 AR-1260-2

R.T.: 6.281 min
 Delta R.T.: 0.000 min
 Response: 5889850
 Conc: 18.48 ng/ml



#32 AR-1260-2

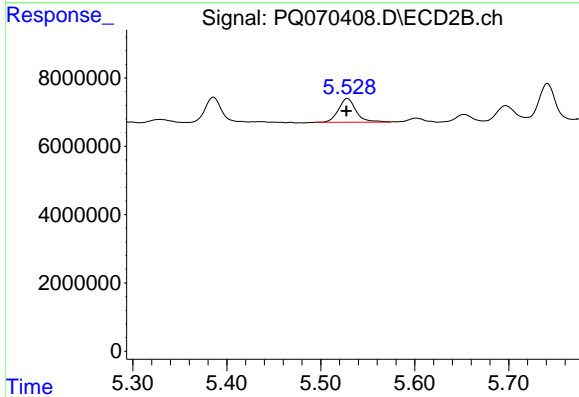
R.T.: 5.386 min
 Delta R.T.: 0.000 min
 Response: 8867853
 Conc: 20.24 ng/ml



#33 AR-1260-3

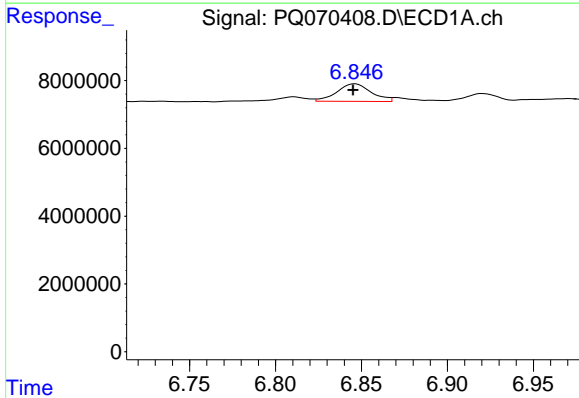
R.T.: 6.632 min
 Delta R.T.: 0.000 min
 Response: 8111823
 Conc: 31.24 ng/ml

Instrument :
 ECD_Q
 ClientSampleId :
 LOD-MDL-WATER-01-QT2-2025



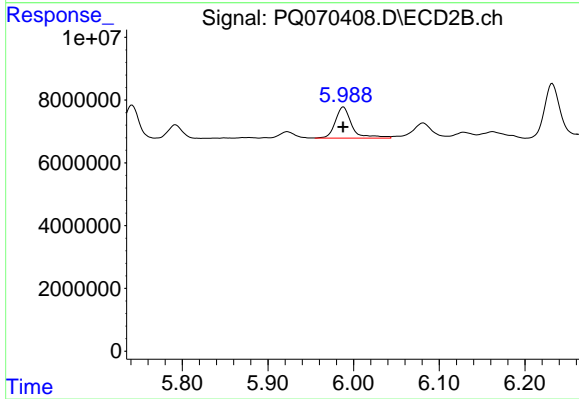
#33 AR-1260-3

R.T.: 5.528 min
 Delta R.T.: 0.001 min
 Response: 9228493
 Conc: 21.39 ng/ml



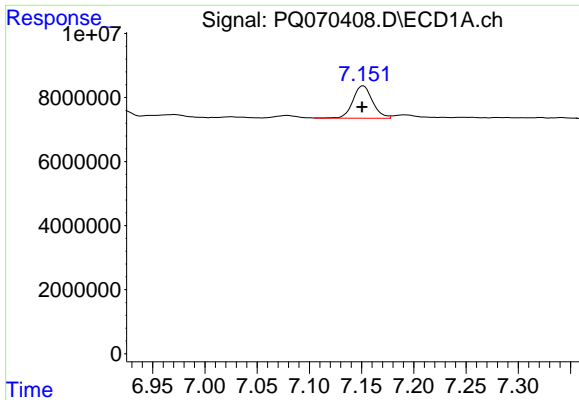
#34 AR-1260-4

R.T.: 6.846 min
 Delta R.T.: 0.001 min
 Response: 7211677
 Conc: 26.47 ng/ml



#34 AR-1260-4

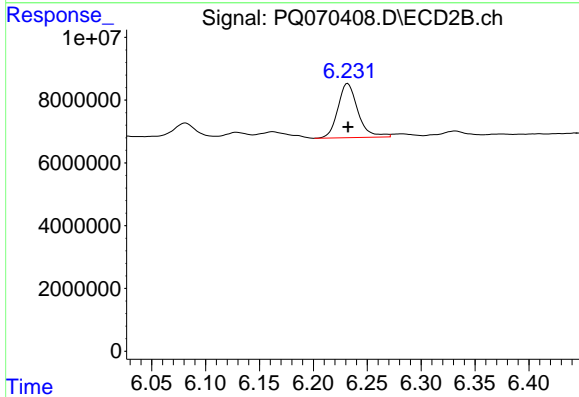
R.T.: 5.988 min
 Delta R.T.: 0.000 min
 Response: 13372079
 Conc: 36.44 ng/ml



#35 AR-1260-5

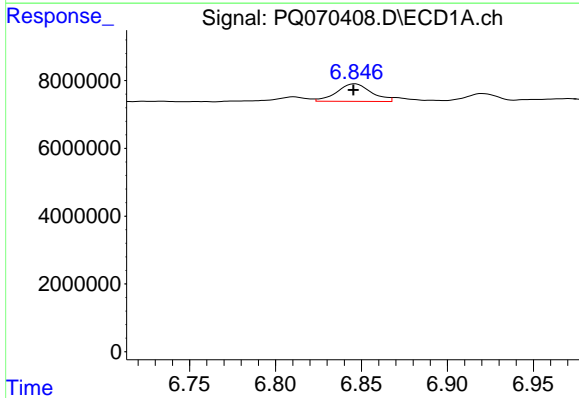
R.T.: 7.152 min
 Delta R.T.: 0.001 min
 Response: 13215051
 Conc: 26.53 ng/ml

Instrument :
 ECD_Q
 ClientSampleId :
 LOD-MDL-WATER-01-QT2-2025



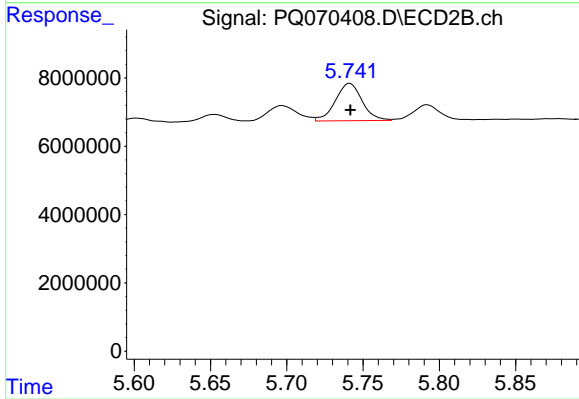
#35 AR-1260-5

R.T.: 6.232 min
 Delta R.T.: 0.000 min
 Response: 22247339
 Conc: 26.77 ng/ml



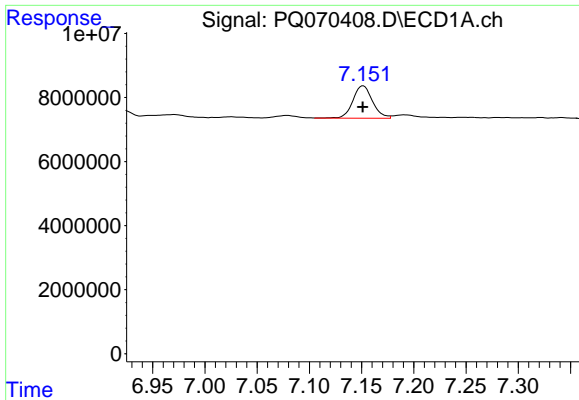
#36 AR-1262-1

R.T.: 6.846 min
 Delta R.T.: 0.000 min
 Response: 7211677
 Conc: 20.48 ng/ml



#36 AR-1262-1

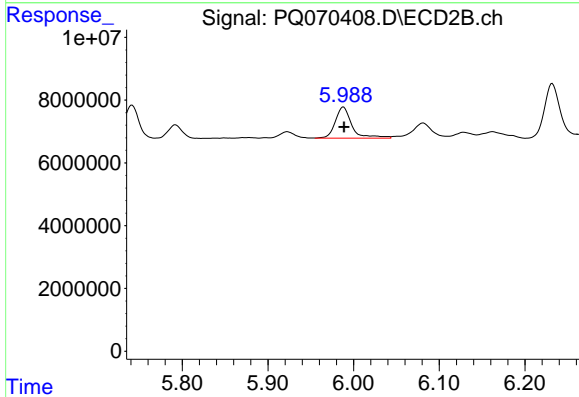
R.T.: 5.741 min
 Delta R.T.: 0.000 min
 Response: 13306232
 Conc: 24.32 ng/ml



#37 AR-1262-2

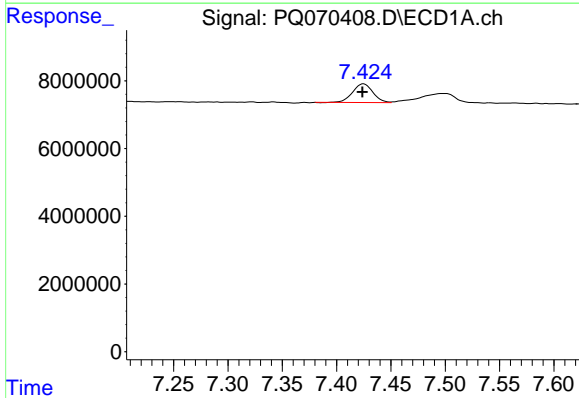
R.T.: 7.152 min
 Delta R.T.: 0.000 min
 Response: 13215051
 Conc: 23.33 ng/ml

Instrument : ECD_Q
 ClientSampleId : LOD-MDL-WATER-01-QT2-2025



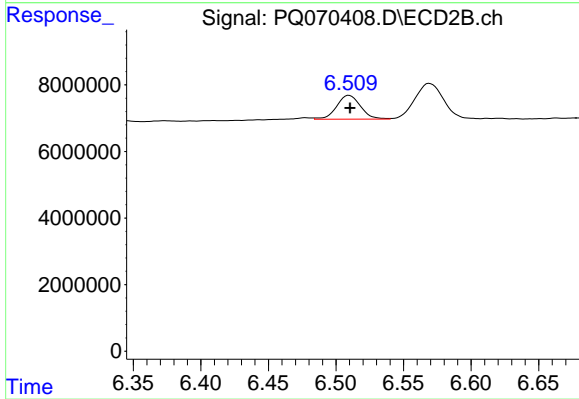
#37 AR-1262-2

R.T.: 5.988 min
 Delta R.T.: 0.000 min
 Response: 13372079
 Conc: 26.29 ng/ml



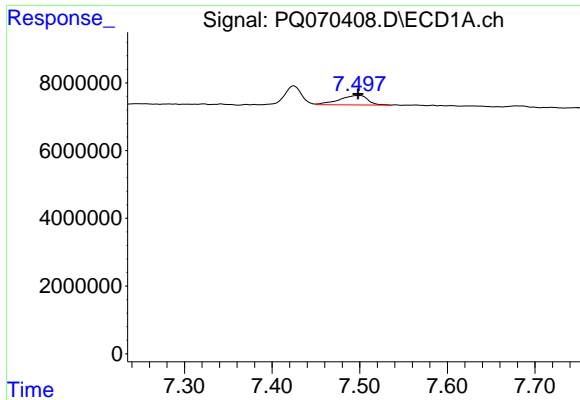
#38 AR-1262-3

R.T.: 7.425 min
 Delta R.T.: 0.000 min
 Response: 7252476
 Conc: 18.62 ng/ml



#38 AR-1262-3

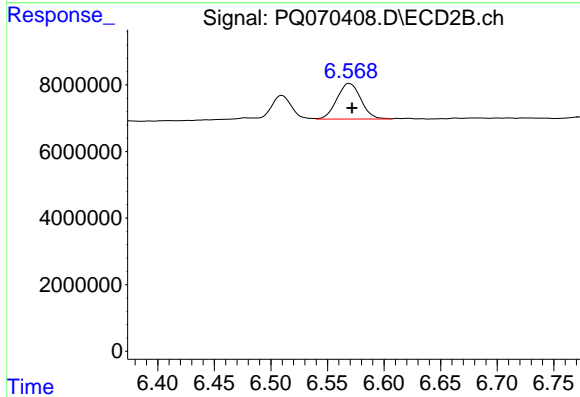
R.T.: 6.510 min
 Delta R.T.: 0.000 min
 Response: 8854704
 Conc: 22.55 ng/ml



#39 AR-1262-4

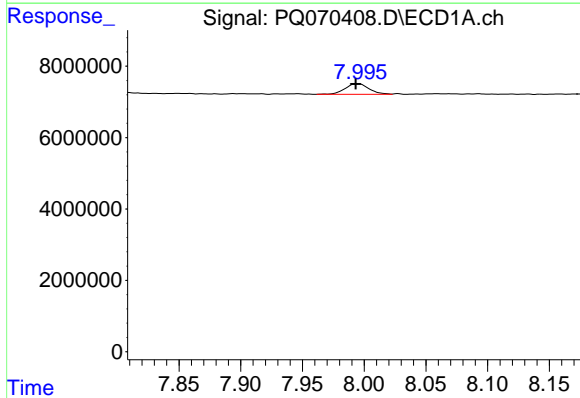
R.T.: 7.498 min
 Delta R.T.: 0.000 min
 Response: 6447830
 Conc: 20.15 ng/ml

Instrument : ECD_Q
 ClientSampleId : LOD-MDL-WATER-01-QT2-2025



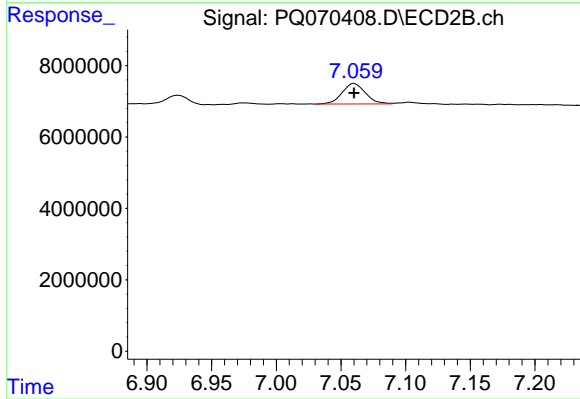
#39 AR-1262-4

R.T.: 6.569 min
 Delta R.T.: -0.003 min
 Response: 15782151
 Conc: 22.53 ng/ml



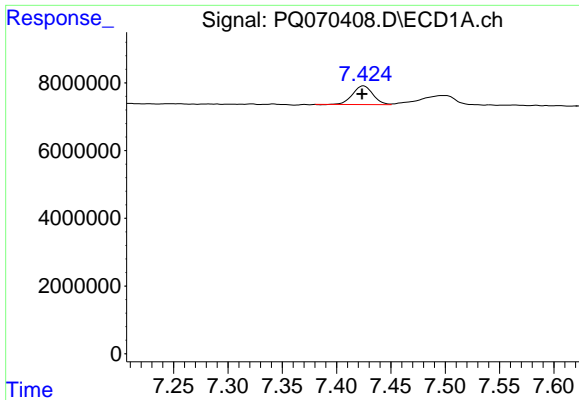
#40 AR-1262-5

R.T.: 7.995 min
 Delta R.T.: 0.002 min
 Response: 4024977
 Conc: 21.49 ng/ml



#40 AR-1262-5

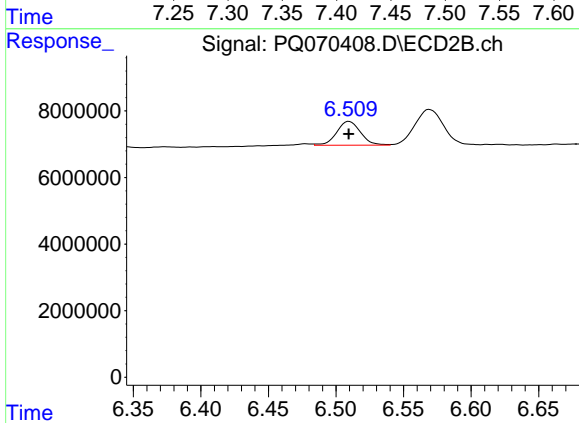
R.T.: 7.060 min
 Delta R.T.: 0.000 min
 Response: 7146924
 Conc: 22.54 ng/ml



#41 AR-1268-1

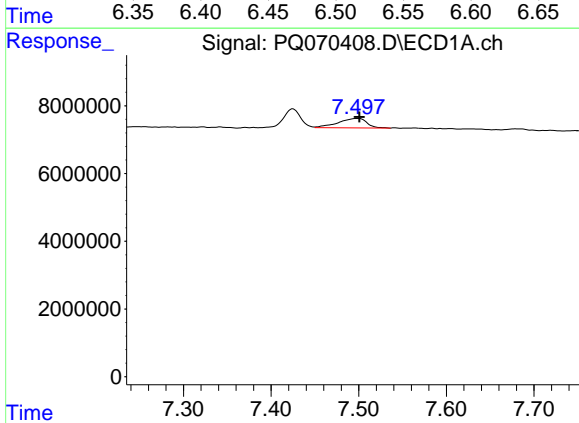
R.T.: 7.425 min
 Delta R.T.: 0.001 min
 Response: 7252476
 Conc: 10.06 ng/ml

Instrument :
 ECD_Q
 ClientSampleId :
 LOD-MDL-WATER-01-QT2-2025



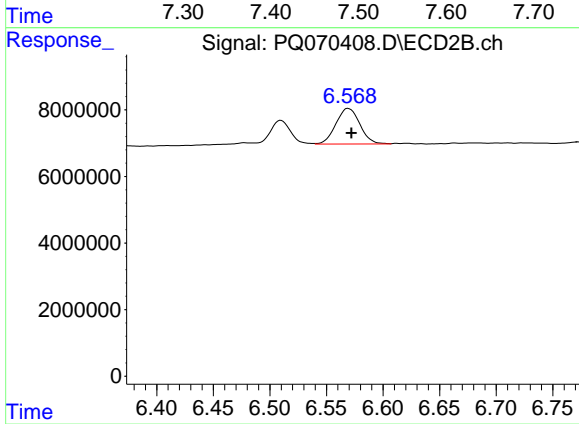
#41 AR-1268-1

R.T.: 6.510 min
 Delta R.T.: 0.000 min
 Response: 8854704
 Conc: 7.64 ng/ml



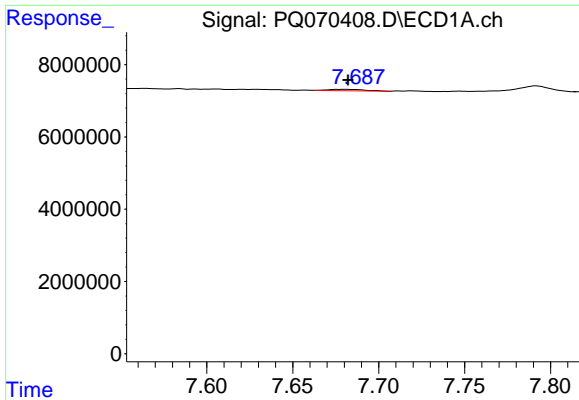
#42 AR-1268-2

R.T.: 7.498 min
 Delta R.T.: -0.003 min
 Response: 6447830
 Conc: 9.71 ng/ml



#42 AR-1268-2

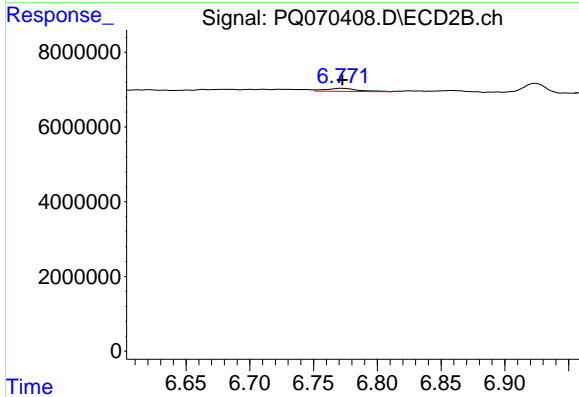
R.T.: 6.569 min
 Delta R.T.: -0.003 min
 Response: 15782151
 Conc: 14.72 ng/ml



#43 AR-1268-3

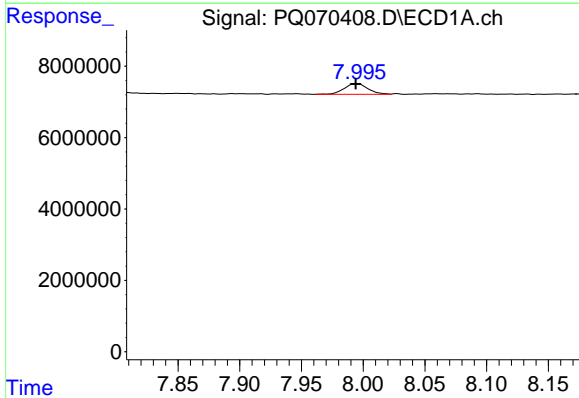
R.T.: 7.679 min
 Delta R.T.: -0.003 min
 Response: 601689
 Conc: 1.06 ng/ml

Instrument : ECD_Q
 ClientSampleId : LOD-MDL-WATER-01-QT2-2025



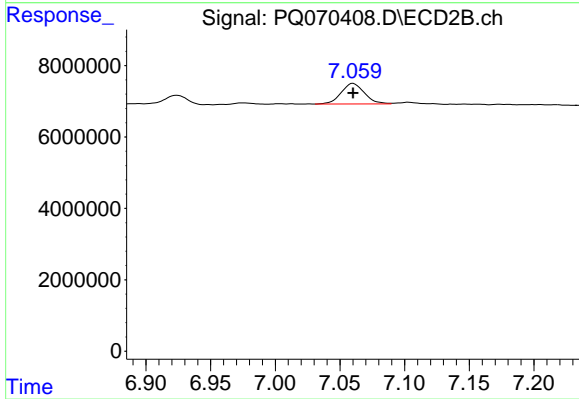
#43 AR-1268-3

R.T.: 6.772 min
 Delta R.T.: 0.000 min
 Response: 1414014
 Conc: 1.48 ng/ml



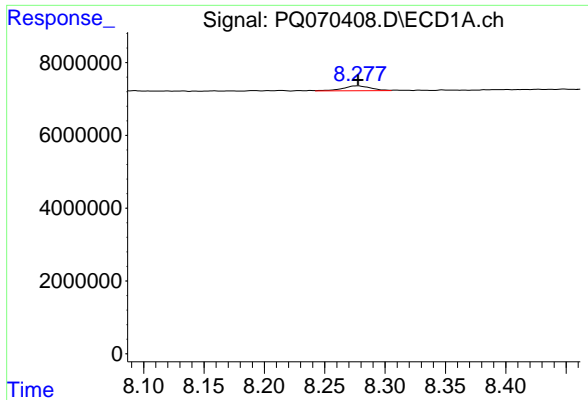
#44 AR-1268-4

R.T.: 7.995 min
 Delta R.T.: 0.001 min
 Response: 4024977
 Conc: 19.51 ng/ml



#44 AR-1268-4

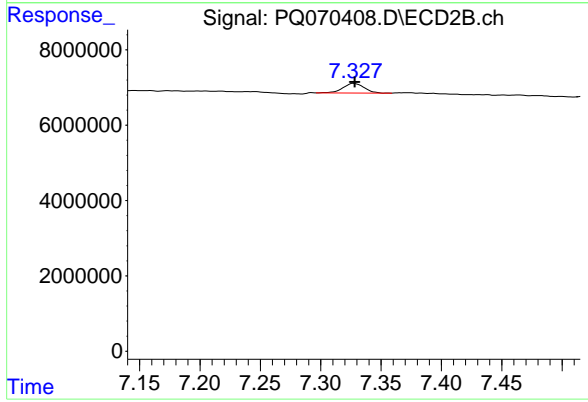
R.T.: 7.060 min
 Delta R.T.: 0.000 min
 Response: 7146924
 Conc: 19.00 ng/ml



#45 AR-1268-5

R.T.: 8.277 min
Delta R.T.: 0.000 min
Response: 2188758
Conc: 1.37 ng/ml

Instrument :
ECD_Q
ClientSampleId :
LOD-MDL-WATER-01-QT2-2025



#45 AR-1268-5

R.T.: 7.327 min
Delta R.T.: 0.000 min
Response: 3161977
Conc: 1.20 ng/ml