

Data Path : Z:\pestpcbsrv\HPCHEM1\ECD_Q\Data\PQ062719\
 Data File : PQ041112.D
 Signal(s) : Signal #1: ECD1A.ch Signal #2: ECD2B.ch
 Acq On : 27 Jun 2019 09:32
 Operator : SM\AJ
 Sample : AIBLK32
 Misc :
 ALS Vial : 2 Sample Multiplier: 1

Instrument :
 ECD_Q
 ClientSampleId :
 AIBLK32

Integration File signal 1: autoint1.e
 Integration File signal 2: autoint2.e
 Quant Time: Jun 28 00:42:07 2019
 Quant Method : Z:\pestpcbsrv\HPCHEM1\ECD_Q\Method\PQ062419CLP.M
 Quant Title : GC EXTRACTABLES
 QLast Update : Tue Jun 25 07:15:04 2019
 Response via : Initial Calibration
 Integrator: ChemStation

Volume Inj. : 1 µl
 Signal #1 Phase : ZB MR1 Signal #2 Phase: ZB MR2
 Signal #1 Info : 30Mx0.32mmx 0.5µm Signal #2 Info : 30M x 0.32mm x 0.25µm

Compound	RT#1	RT#2	Resp#1	Resp#2	ng/ml	ng/ml

System Monitoring Compounds						
1) SA Tetrachlo...	5.724	4.775	156.6E6	123.6E6	23.365	23.993
2) SA Decachlor...	12.159	10.560	444.9E6	181.2E6	41.699	42.330
Target Compounds						
9) L2 AR-1221-2	0.000	5.194	0	1269845	N.D.	27.900 #
20) L4 AR-1242-5	0.000	7.218	0	909237	N.D.	4.740 #
25) L5 AR-1248-5	0.000	7.218	0	909237	N.D.	3.802 #
26) L6 AR-1254-1	0.000	7.218	0	909237	N.D.	2.712 #
28) L6 AR-1254-3	0.000	7.782	0	4756092	N.D.	10.025 #
32) L7 AR-1260-2	0.000	8.140	0	1168823	N.D.	2.979 #
43) L9 AR-1268-3	0.000	9.648	0	1413078	N.D.	2.096 #
45) L9 AR-1268-5	0.000	10.278	0	1652708	N.D.	0.925 #

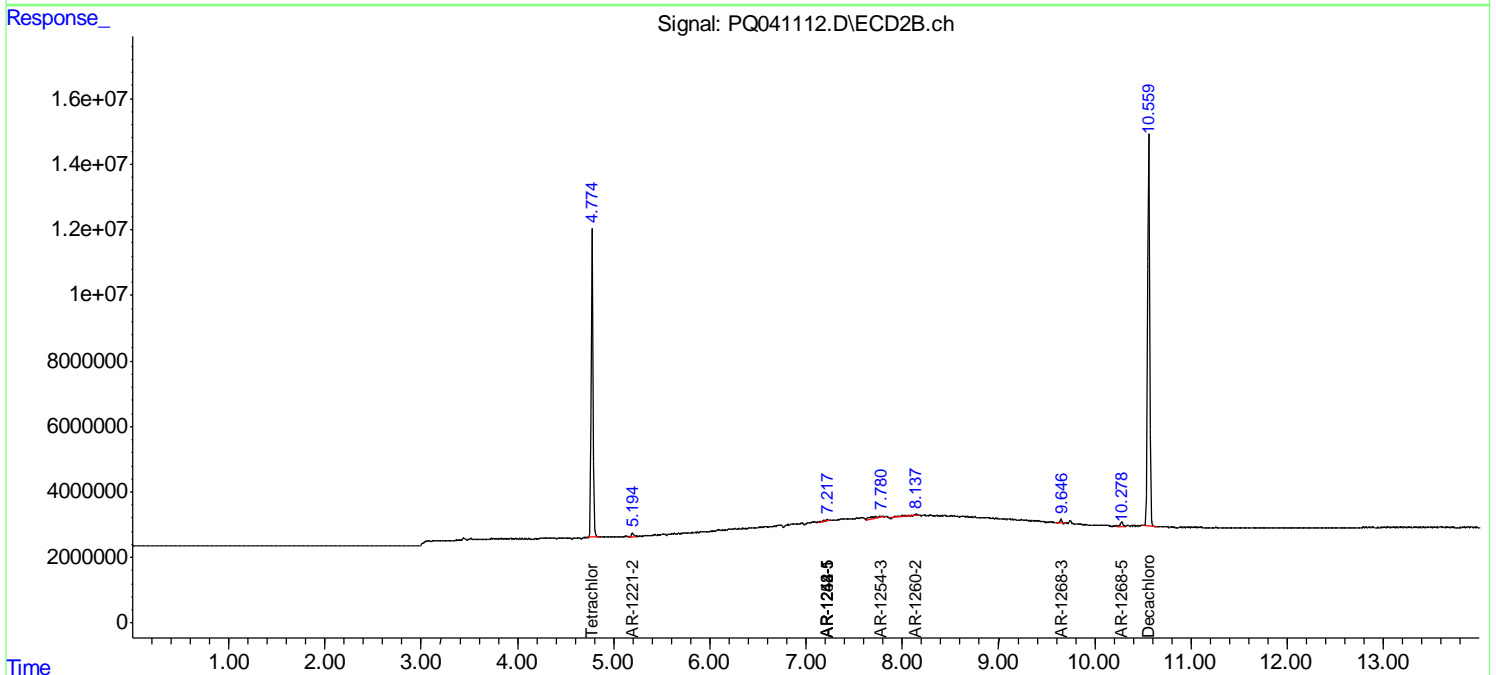
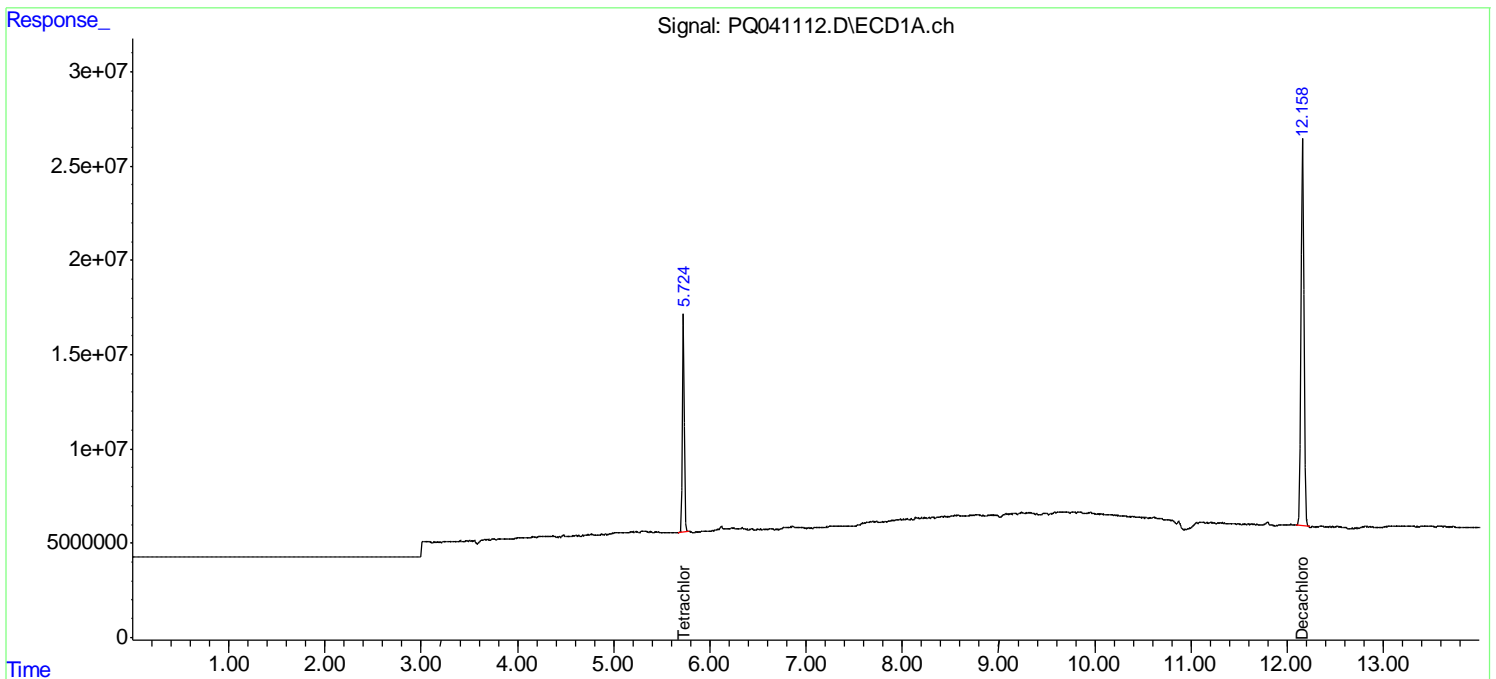
(f)=RT Delta > 1/2 Window (#)=Amounts differ by > 25% (m)=manual int.

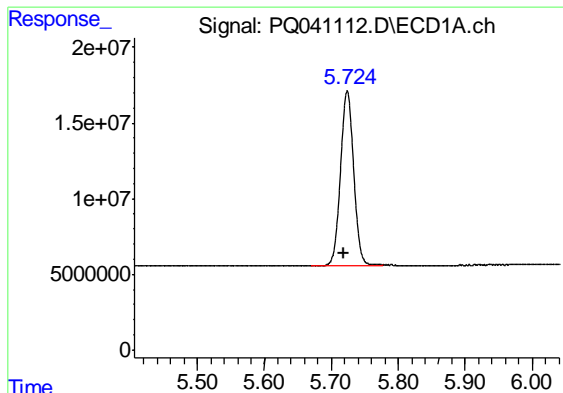
Data Path : Z:\pestpcbsrv\HPCHEM1\ECD_Q\Data\PQ062719\
 Data File : PQ041112.D
 Signal(s) : Signal #1: ECD1A.ch Signal #2: ECD2B.ch
 Acq On : 27 Jun 2019 09:32
 Operator : SM\AJ
 Sample : AIBLK32
 Misc :
 ALS Vial : 2 Sample Multiplier: 1

Instrument :
 ECD_Q
Client Sampled :
 AIBLK32

Integration File signal 1: autoint1.e
 Integration File signal 2: autoint2.e
 Quant Time: Jun 28 00:42:07 2019
 Quant Method : Z:\pestpcbsrv\HPCHEM1\ECD_Q\Method\PQ062419CLP.M
 Quant Title : GC EXTRACTABLES
 QLast Update : Tue Jun 25 07:15:04 2019
 Response via : Initial Calibration
 Integrator: ChemStation

Volume Inj. : 1 µl
 Signal #1 Phase : ZB MR1 Signal #2 Phase: ZB MR2
 Signal #1 Info : 30Mx0.32mmx 0.5µm Signal #2 Info : 30M x 0.32mm x 0.25µm

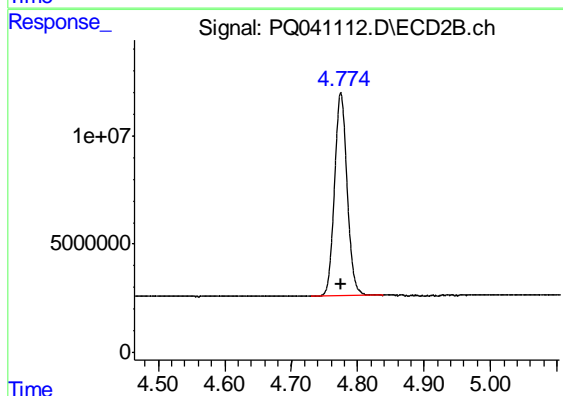




#1 Tetrachloro-m-xylene

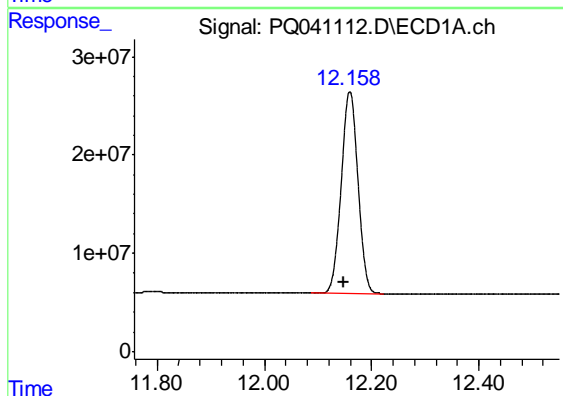
R.T.: 5.724 min
 Delta R.T.: 0.005 min
 Response: 156631562
 Conc: 23.37 ng/ml

Instrument :
 ECD_Q
 ClientSampleId :
 AIBLK32



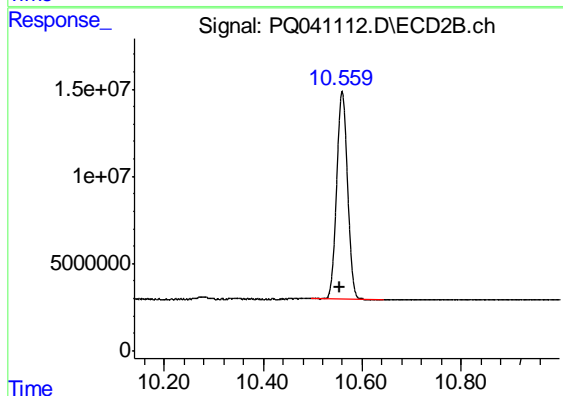
#1 Tetrachloro-m-xylene

R.T.: 4.775 min
 Delta R.T.: 0.000 min
 Response: 123645753
 Conc: 23.99 ng/ml



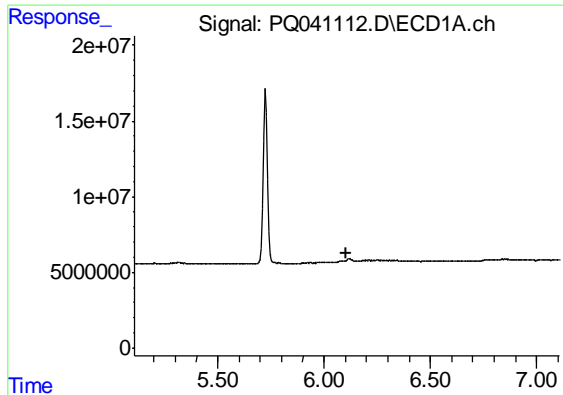
#2 Decachlorobiphenyl

R.T.: 12.159 min
 Delta R.T.: 0.012 min
 Response: 444905957
 Conc: 41.70 ng/ml



#2 Decachlorobiphenyl

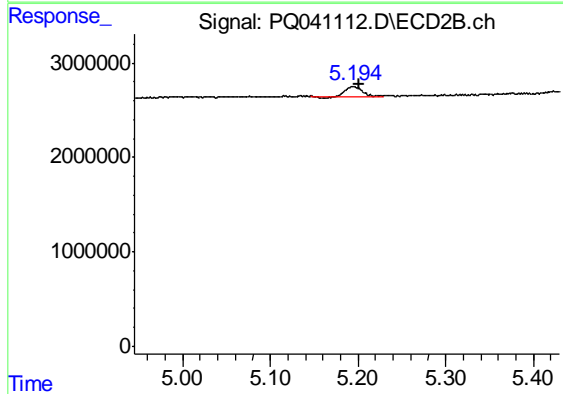
R.T.: 10.560 min
 Delta R.T.: 0.004 min
 Response: 181231235
 Conc: 42.33 ng/ml



#9 AR-1221-2

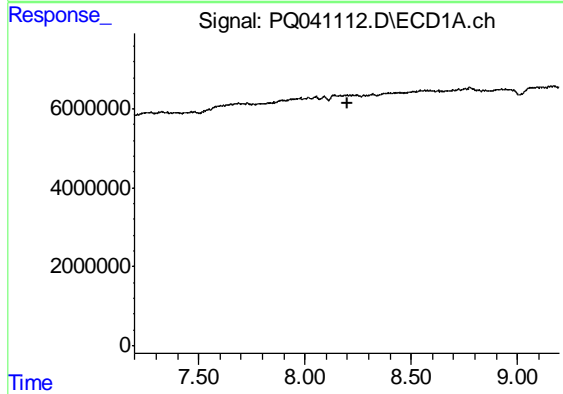
R.T.: 0.000 min
 Exp R.T. : 6.108 min
 Response: 0
 Conc: N.D.

Instrument :
 ECD_Q
 ClientSampleId :
 AIBLK32



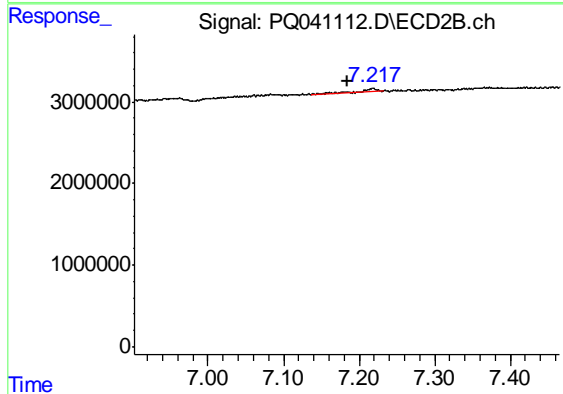
#9 AR-1221-2

R.T.: 5.194 min
 Delta R.T.: -0.007 min
 Response: 1269845
 Conc: 27.90 ng/ml



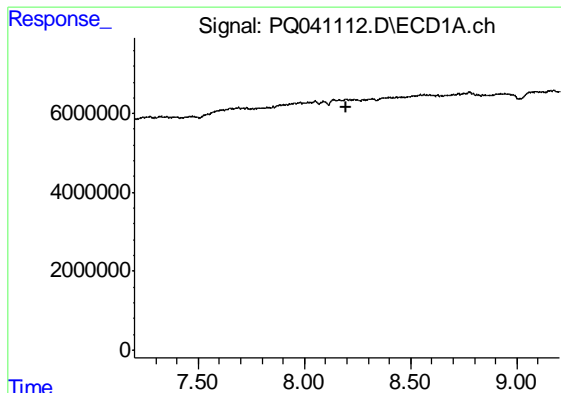
#20 AR-1242-5

R.T.: 0.000 min
 Exp R.T. : 8.198 min
 Response: 0
 Conc: N.D.



#20 AR-1242-5

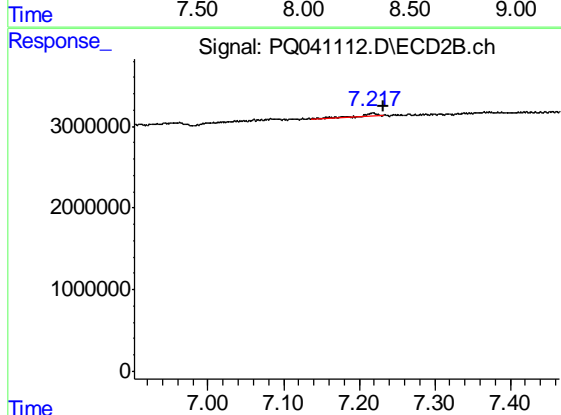
R.T.: 7.218 min
 Delta R.T.: 0.033 min
 Response: 909237
 Conc: 4.74 ng/ml



#25 AR-1248-5

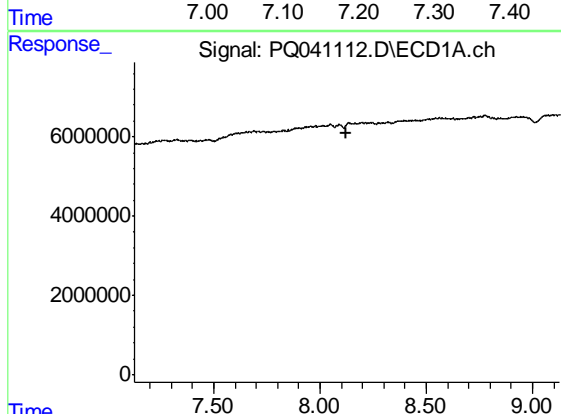
R.T.: 0.000 min
 Exp R.T. : 8.200 min
 Response: 0
 Conc: N.D.

Instrument :
 ECD_Q
 ClientSampleId :
 AIBLK32



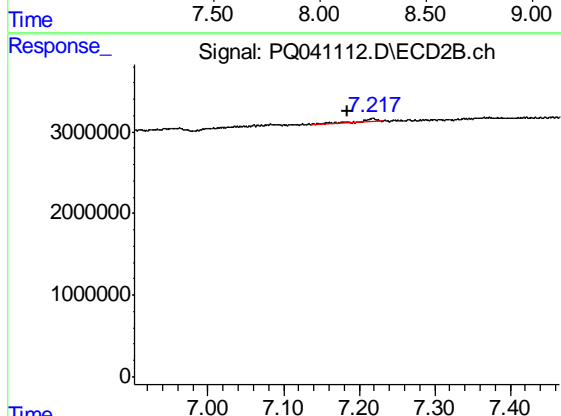
#25 AR-1248-5

R.T.: 7.218 min
 Delta R.T.: -0.015 min
 Response: 909237
 Conc: 3.80 ng/ml



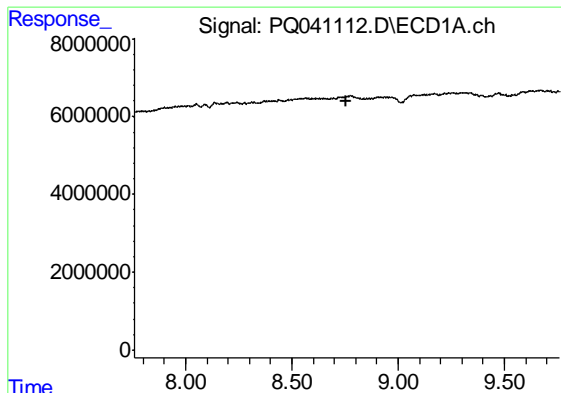
#26 AR-1254-1

R.T.: 0.000 min
 Exp R.T. : 8.127 min
 Response: 0
 Conc: N.D.



#26 AR-1254-1

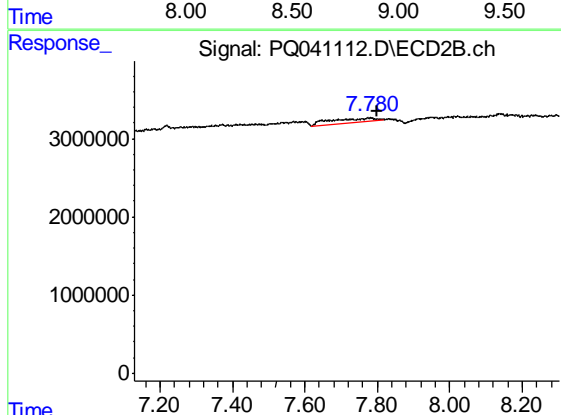
R.T.: 7.218 min
 Delta R.T.: 0.033 min
 Response: 909237
 Conc: 2.71 ng/ml



#28 AR-1254-3

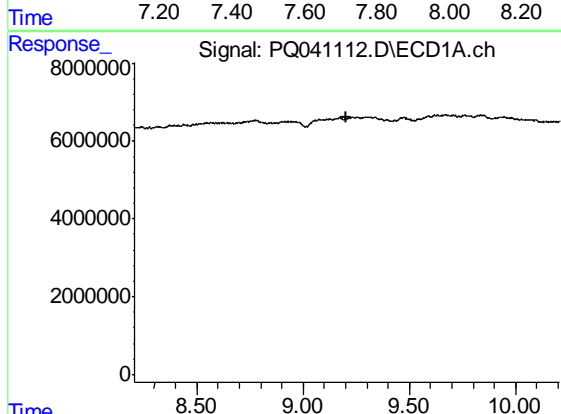
R.T.: 0.000 min
 Exp R.T. : 8.759 min
 Response: 0
 Conc: N.D.

Instrument :
 ECD_Q
 ClientSampled :
 AIBLK32



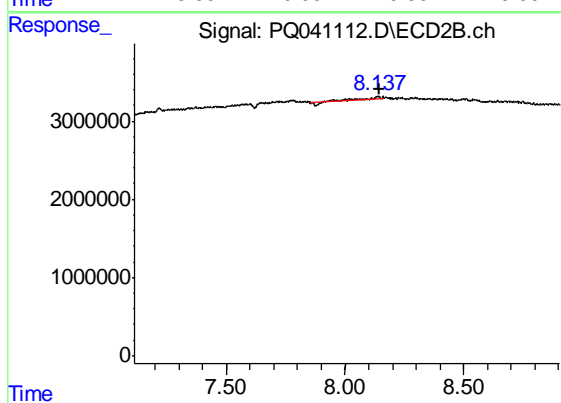
#28 AR-1254-3

R.T.: 7.782 min
 Delta R.T.: -0.019 min
 Response: 4756092
 Conc: 10.02 ng/ml



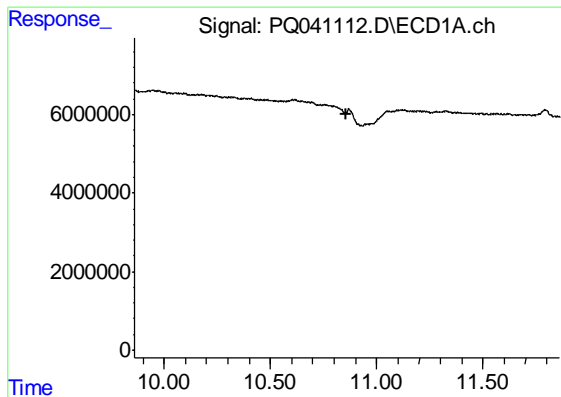
#32 AR-1260-2

R.T.: 0.000 min
 Exp R.T. : 9.206 min
 Response: 0
 Conc: N.D.



#32 AR-1260-2

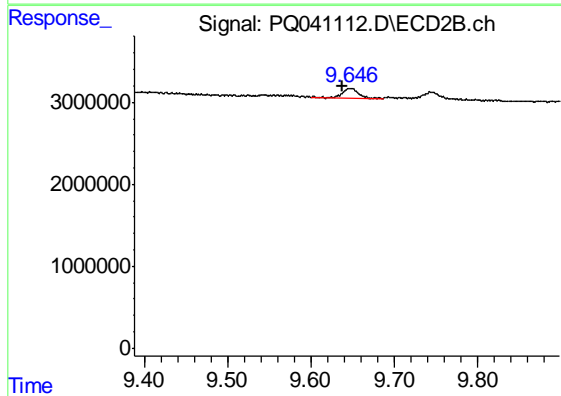
R.T.: 8.140 min
 Delta R.T.: -0.006 min
 Response: 1168823
 Conc: 2.98 ng/ml



#43 AR-1268-3

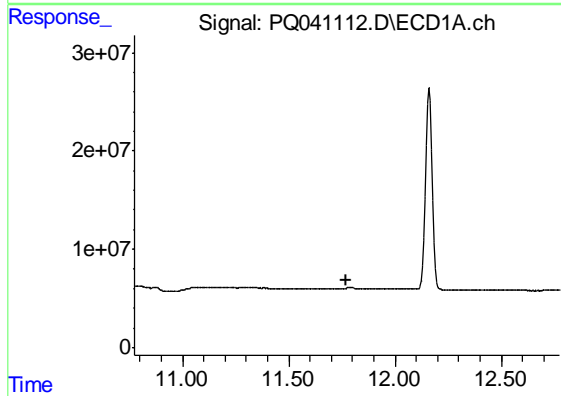
R.T.: 0.000 min
 Exp R.T. : 10.860 min
 Response: 0
 Conc: N.D.

Instrument :
 ECD_Q
 ClientSampled :
 AIBLK32



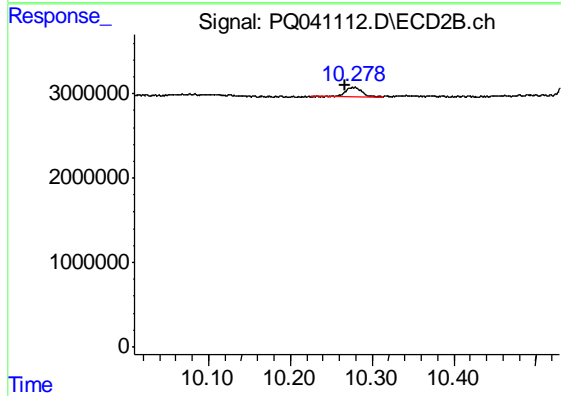
#43 AR-1268-3

R.T.: 9.648 min
 Delta R.T.: 0.010 min
 Response: 1413078
 Conc: 2.10 ng/ml



#45 AR-1268-5

R.T.: 0.000 min
 Exp R.T. : 11.773 min
 Response: 0
 Conc: N.D.



#45 AR-1268-5

R.T.: 10.278 min
 Delta R.T.: 0.011 min
 Response: 1652708
 Conc: 0.93 ng/ml