

Data Path : Z:\pestpcbsrv\HPCHEM1\ECD_Q\Data\PQ062920\
 Data File : PQ048543.D
 Signal(s) : Signal #1: ECD1A.ch Signal #2: ECD2B.ch
 Acq On : 29 Jun 2020 17:28
 Operator : DD\AJ
 Sample : L3129-07 5X
 Misc :
 ALS Vial : 16 Sample Multiplier: 1

Instrument :
 ECD_Q
 ClientSampleId :
 1399-1400

Integration File signal 1: autoint1.e
 Integration File signal 2: autoint2.e
 Quant Time: Jun 29 17:43:27 2020
 Quant Method : Z:\pestpcbsrv\HPCHEM1\ECD_Q\Method\PQ061720.M
 Quant Title : GC EXTRACTABLES
 QLast Update : Wed Jun 17 15:37:20 2020
 Response via : Initial Calibration
 Integrator: ChemStation

Volume Inj. : 2 µl
 Signal #1 Phase : ZB-MR1 Signal #2 Phase: ZB-MR2
 Signal #1 Info : 30Mx0.32mmx 0.50µ Signal #2 Info : 30M x 0.32mm x 0.25µm

Compound	RT#1	RT#2	Resp#1	Resp#2	ng/ml	ng/ml

System Monitoring Compounds						
1) SA Tetrachlo...	5.285	4.288	28385751	13984268	3.851	3.961
2) SA Decachlor...	11.554	9.657	44386554	22334521	4.587	4.641

Target Compounds

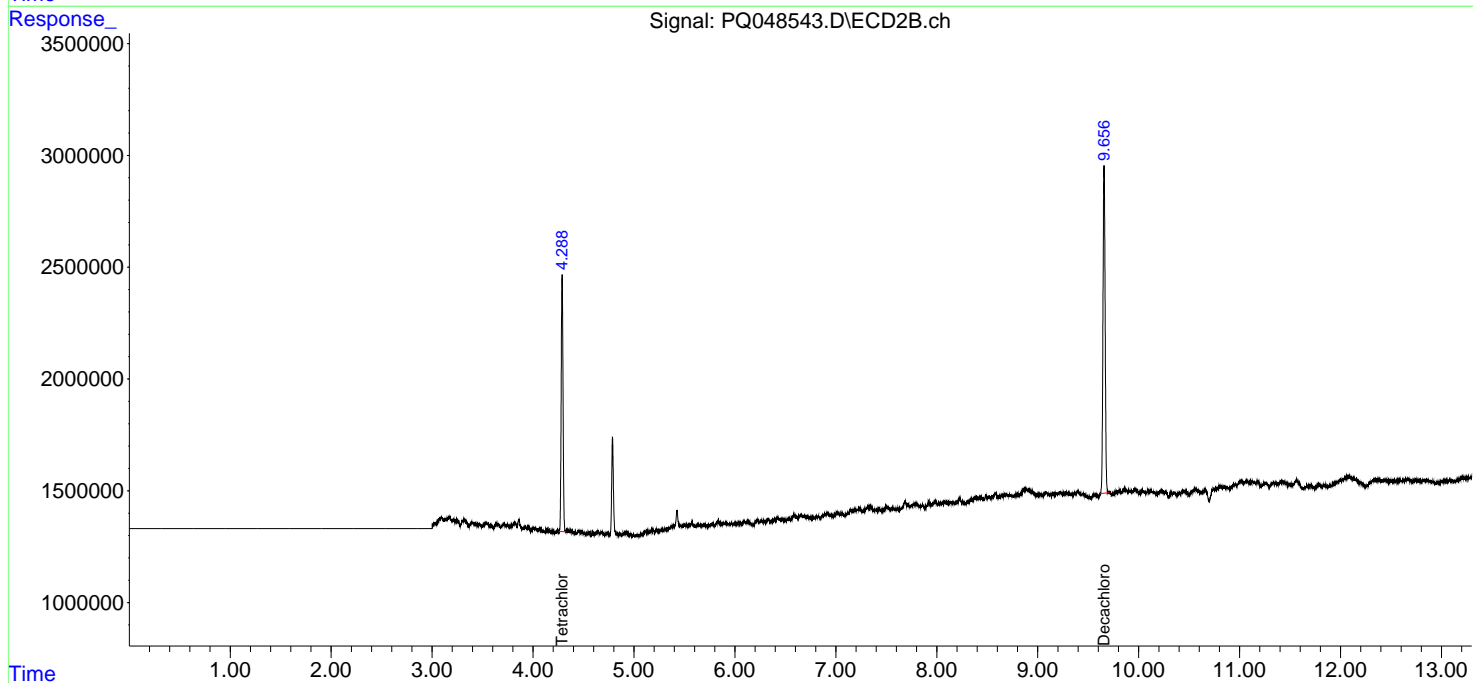
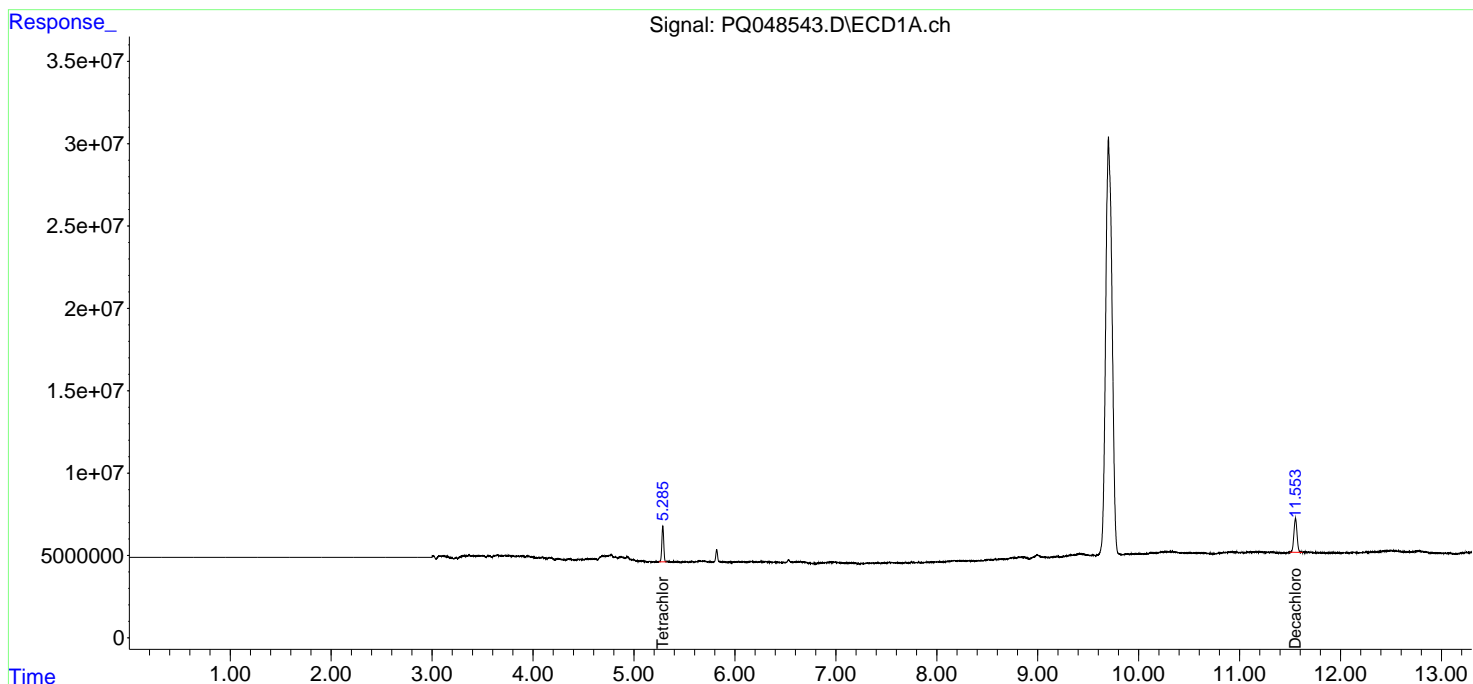
(f)=RT Delta > 1/2 Window (#)=Amounts differ by > 25% (m)=manual int.

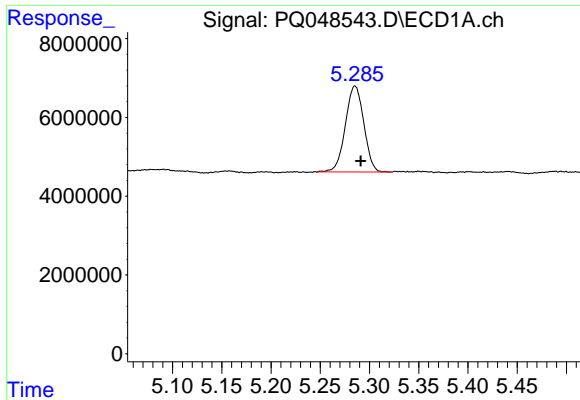
Data Path : Z:\pestpcbsrv\HPCHEM1\ECD_Q\Data\PQ062920\
 Data File : PQ048543.D
 Signal(s) : Signal #1: ECD1A.ch Signal #2: ECD2B.ch
 Acq On : 29 Jun 2020 17:28
 Operator : DD\AJ
 Sample : L3129-07 5X
 Misc :
 ALS Vial : 16 Sample Multiplier: 1

Instrument :
 ECD_Q
 ClientSampled :
 1399-1400

Integration File signal 1: autoint1.e
 Integration File signal 2: autoint2.e
 Quant Time: Jun 29 17:43:27 2020
 Quant Method : Z:\pestpcbsrv\HPCHEM1\ECD_Q\Method\PQ061720.M
 Quant Title : GC EXTRACTABLES
 QLast Update : Wed Jun 17 15:37:20 2020
 Response via : Initial Calibration
 Integrator: ChemStation

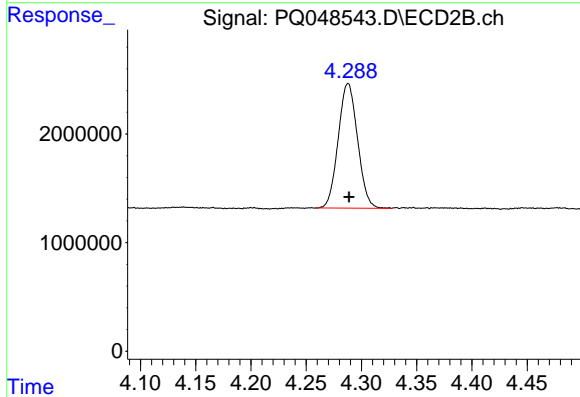
Volume Inj. : 2 µl
 Signal #1 Phase : ZB-MR1 Signal #2 Phase: ZB-MR2
 Signal #1 Info : 30Mx0.32mmx 0.50µ Signal #2 Info : 30M x 0.32mm x 0.25µm



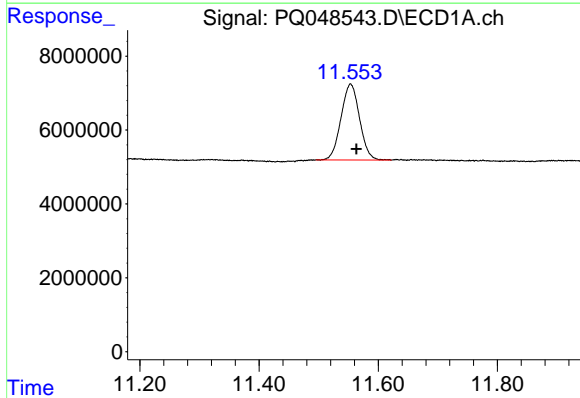


#1 Tetrachloro-m-xylene
 R.T.: 5.285 min
 Delta R.T.: -0.006 min
 Response: 28385751
 Conc: 3.85 ng/ml

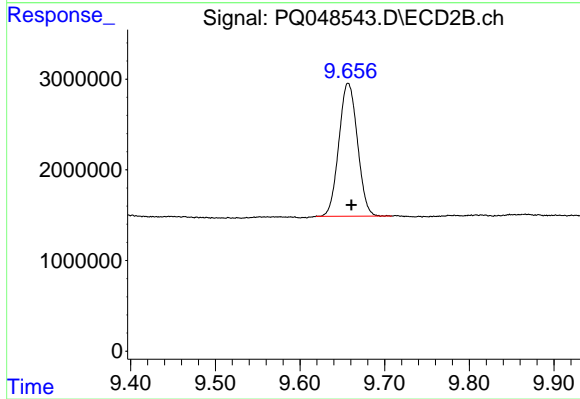
Instrument :
 ECD_Q
 ClientSampleId :
 1399-1400



#1 Tetrachloro-m-xylene
 R.T.: 4.288 min
 Delta R.T.: 0.000 min
 Response: 13984268
 Conc: 3.96 ng/ml



#2 Decachlorobiphenyl
 R.T.: 11.554 min
 Delta R.T.: -0.010 min
 Response: 44386554
 Conc: 4.59 ng/ml



#2 Decachlorobiphenyl
 R.T.: 9.657 min
 Delta R.T.: -0.004 min
 Response: 22334521
 Conc: 4.64 ng/ml