

Data Path : Z:\pestpcbsrv\HPCHEM1\ECD\_Q\Data\PQ062920\  
 Data File : PQ048544.D  
 Signal(s) : Signal #1: ECD1A.ch Signal #2: ECD2B.ch  
 Acq On : 29 Jun 2020 17:49  
 Operator : DD\AJ  
 Sample : L3144-02DL 50X  
 Misc :  
 ALS Vial : 18 Sample Multiplier: 1

Instrument :  
 ECD\_Q  
 ClientSampleId :  
 37849DL

Integration File signal 1: autoint1.e  
 Integration File signal 2: autoint2.e  
 Quant Time: Jun 29 18:04:07 2020  
 Quant Method : Z:\pestpcbsrv\HPCHEM1\ECD\_Q\Method\PQ061720.M  
 Quant Title : GC EXTRACTABLES  
 QLast Update : Wed Jun 17 15:37:20 2020  
 Response via : Initial Calibration  
 Integrator: ChemStation

Volume Inj. : 2 µl  
 Signal #1 Phase : ZB-MR1 Signal #2 Phase: ZB-MR2  
 Signal #1 Info : 30Mx0.32mmx 0.50µ Signal #2 Info : 30M x 0.32mm x 0.25µm

Compound	RT#1	RT#2	Resp#1	Resp#2	ng/ml	ng/ml
----------	------	------	--------	--------	-------	-------

System Monitoring Compounds

Target Compounds

31)	L7	AR-1260-1	8.322	7.148	441.5E6	249.5E6	1171.040	1148.606
32)	L7	AR-1260-2	8.588	7.343	558.7E6	305.4E6	1216.212	1132.379
33)	L7	AR-1260-3	8.958	7.501	398.6E6	291.7E6	1085.286	1178.135
34)	L7	AR-1260-4	9.207	7.986	519.6E6	230.8E6	1212.890	1079.272
35)	L7	AR-1260-5	9.560	8.232	1038.4E6	637.4E6	1158.155	1181.110

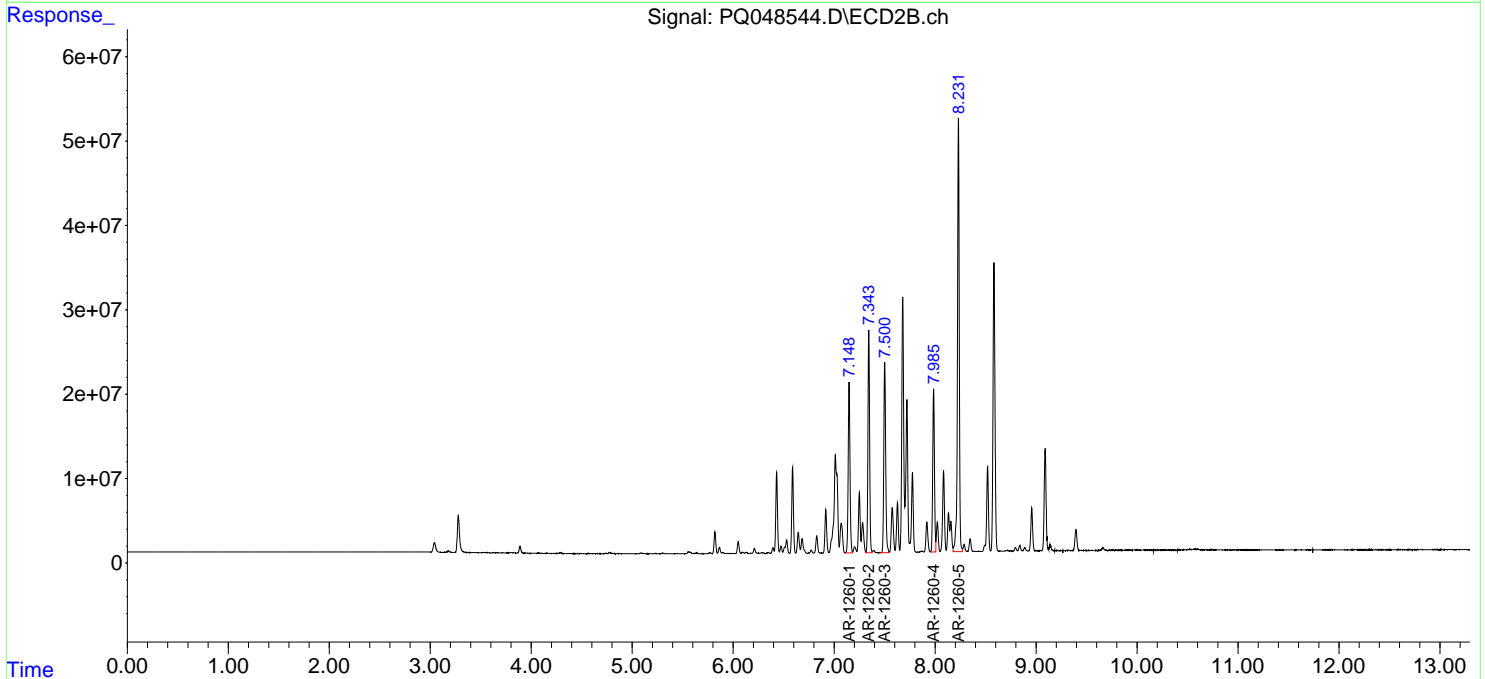
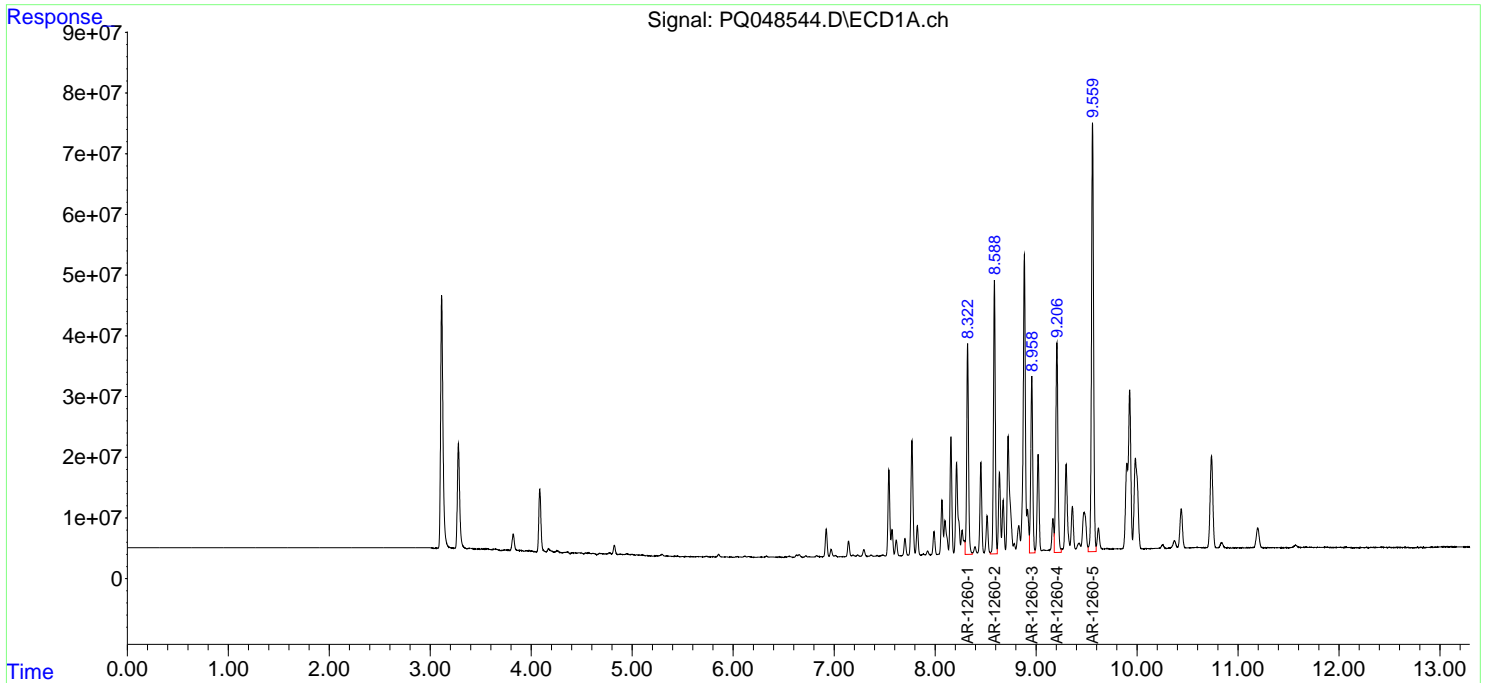
(f)=RT Delta > 1/2 Window (#)=Amounts differ by > 25% (m)=manual int.

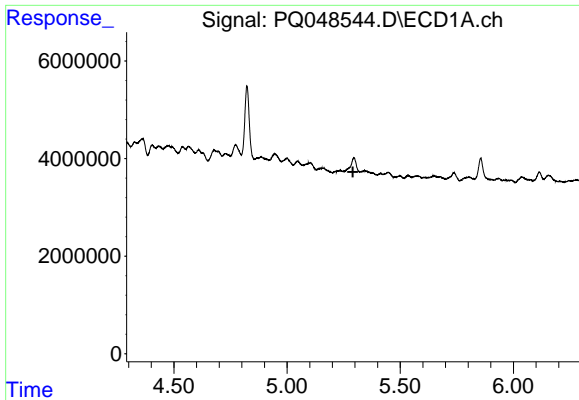
Data Path : Z:\pestpcbsrv\HPCHEM1\ECD\_Q\Data\PQ062920\  
 Data File : PQ048544.D  
 Signal(s) : Signal #1: ECD1A.ch Signal #2: ECD2B.ch  
 Acq On : 29 Jun 2020 17:49  
 Operator : DD\AJ  
 Sample : L3144-02DL 50X  
 Misc :  
 ALS Vial : 18 Sample Multiplier: 1

Instrument :  
 ECD\_Q  
 ClientSampled :  
 37849DL

Integration File signal 1: autoint1.e  
 Integration File signal 2: autoint2.e  
 Quant Time: Jun 29 18:04:07 2020  
 Quant Method : Z:\pestpcbsrv\HPCHEM1\ECD\_Q\Method\PQ061720.M  
 Quant Title : GC EXTRACTABLES  
 QLast Update : Wed Jun 17 15:37:20 2020  
 Response via : Initial Calibration  
 Integrator: ChemStation

Volume Inj. : 2 µl  
 Signal #1 Phase : ZB-MR1 Signal #2 Phase: ZB-MR2  
 Signal #1 Info : 30Mx0.32mmx 0.50µ Signal #2 Info : 30M x 0.32mm x 0.25µm

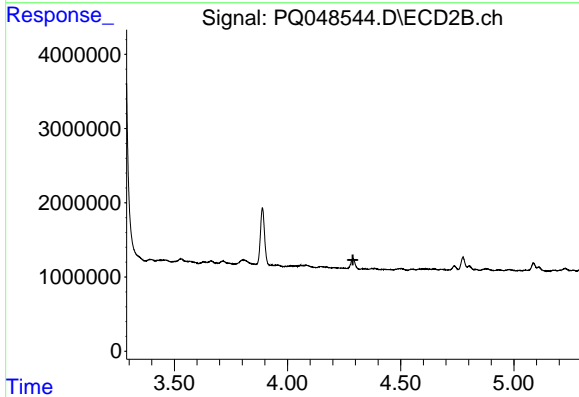




#1 Tetrachloro-m-xylene

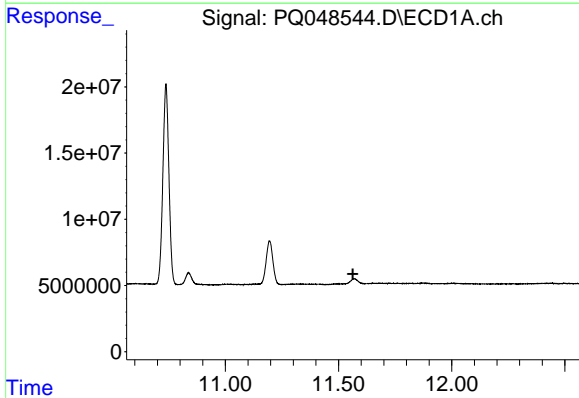
R.T.: 0.000 min  
 Exp R.T. : 5.291 min  
 Response: 0  
 Conc: N.D.

Instrument :  
 ECD\_Q  
 ClientSampled :  
 37849DL



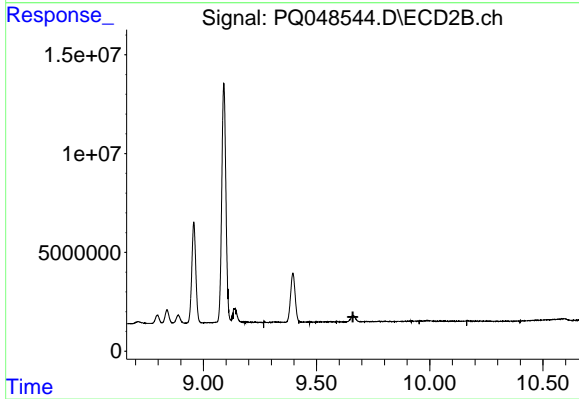
#1 Tetrachloro-m-xylene

R.T.: 0.000 min  
 Exp R.T. : 4.289 min  
 Response: 0  
 Conc: N.D.



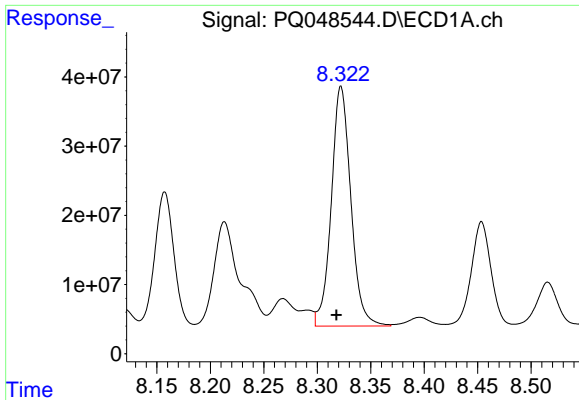
#2 Decachlorobiphenyl

R.T.: 0.000 min  
 Exp R.T. : 11.563 min  
 Response: 0  
 Conc: N.D.



#2 Decachlorobiphenyl

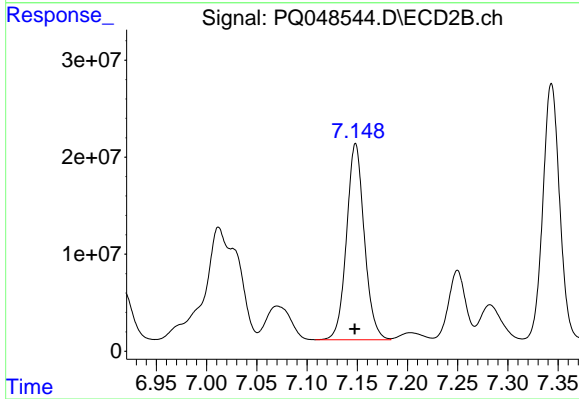
R.T.: 0.000 min  
 Exp R.T. : 9.661 min  
 Response: 0  
 Conc: N.D.



#31 AR-1260-1

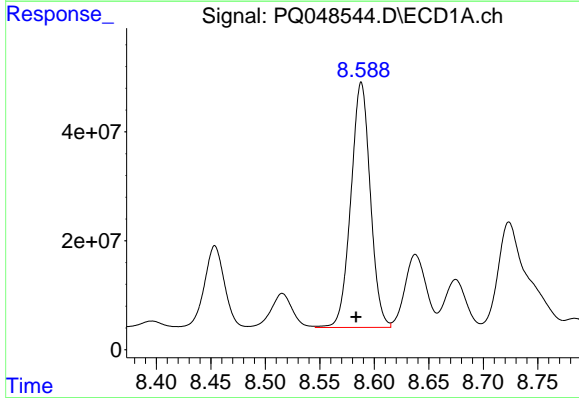
R.T.: 8.322 min  
 Delta R.T.: 0.004 min  
 Response: 441495251  
 Conc: 1171.04 ng/ml

Instrument :  
 ECD\_Q  
 ClientSampled :  
 37849DL



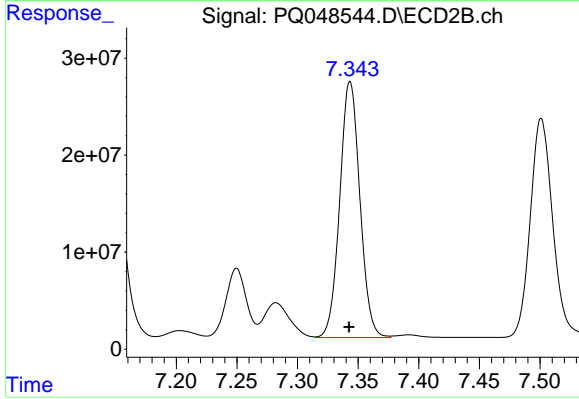
#31 AR-1260-1

R.T.: 7.148 min  
 Delta R.T.: 0.000 min  
 Response: 249494819  
 Conc: 1148.61 ng/ml



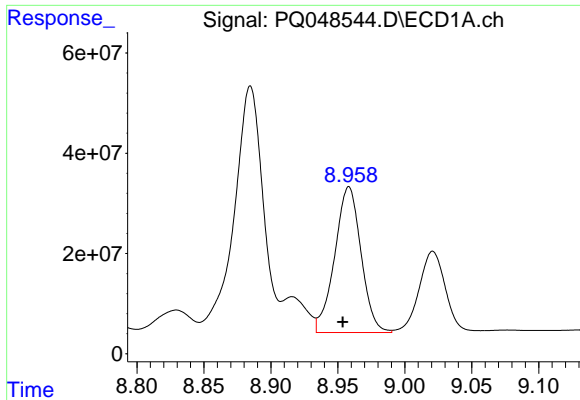
#32 AR-1260-2

R.T.: 8.588 min  
 Delta R.T.: 0.005 min  
 Response: 558680008  
 Conc: 1216.21 ng/ml



#32 AR-1260-2

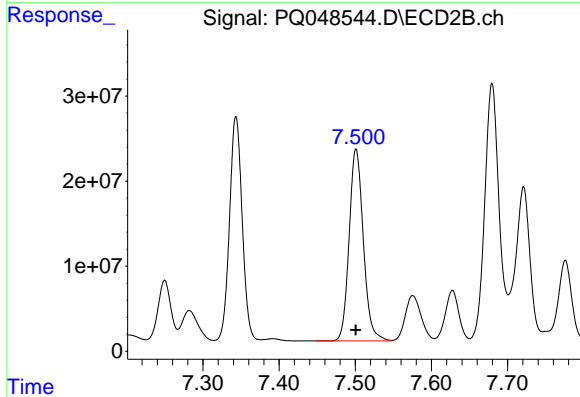
R.T.: 7.343 min  
 Delta R.T.: 0.000 min  
 Response: 305351905  
 Conc: 1132.38 ng/ml



#33 AR-1260-3

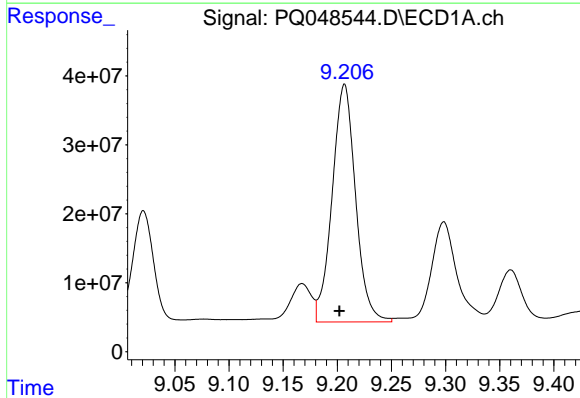
R.T.: 8.958 min  
 Delta R.T.: 0.005 min  
 Response: 398556103  
 Conc: 1085.29 ng/ml

Instrument :  
 ECD\_Q  
 ClientSampleId :  
 37849DL



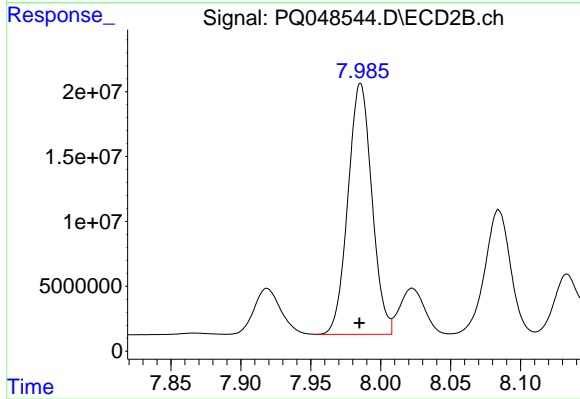
#33 AR-1260-3

R.T.: 7.501 min  
 Delta R.T.: 0.000 min  
 Response: 291656622  
 Conc: 1178.14 ng/ml



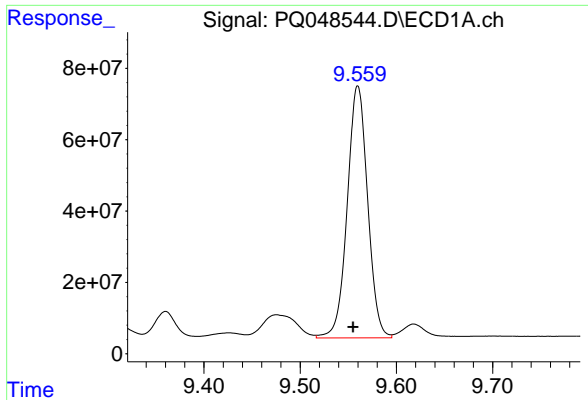
#34 AR-1260-4

R.T.: 9.207 min  
 Delta R.T.: 0.005 min  
 Response: 519603520  
 Conc: 1212.89 ng/ml



#34 AR-1260-4

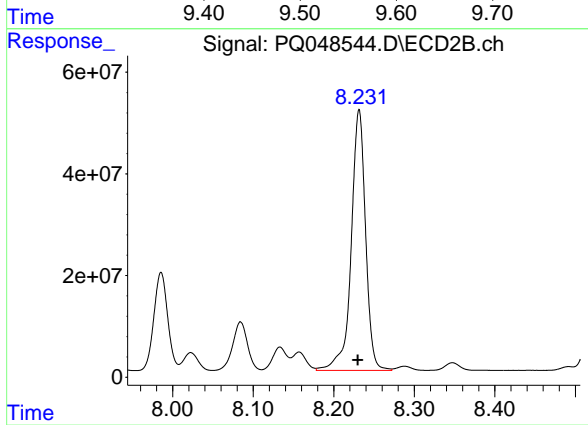
R.T.: 7.986 min  
 Delta R.T.: 0.000 min  
 Response: 230750021  
 Conc: 1079.27 ng/ml



#35 AR-1260-5

R.T.: 9.560 min  
Delta R.T.: 0.005 min  
Response: 1038415335  
Conc: 1158.16 ng/ml

Instrument :  
ECD\_Q  
ClientSampleID :  
37849DL



#35 AR-1260-5

R.T.: 8.232 min  
Delta R.T.: 0.002 min  
Response: 637350543  
Conc: 1181.11 ng/ml