

Data Path : Z:\pestpcbsrv\HPCHEM1\ECD_Q\Data\PQ062922\
 Data File : PQ058454.D
 Signal(s) : Signal #1: ECD1A.ch Signal #2: ECD2B.ch
 Acq On : 30 Jun 2022 01:03
 Operator : YP\AJ
 Sample : N3214-07
 Misc : AR1242 LOD 40 PPB
 ALS Vial : 33 Sample Multiplier: 1

Instrument :
 ECD_Q
 ClientSampleId :

Integration File signal 1: autoint1.e
 Integration File signal 2: autoint2.e
 Quant Time: Jun 30 04:27:02 2022
 Quant Method : Z:\pestpcbsrv\HPCHEM1\ECD_Q\Method\PQ062922.M
 Quant Title : GC EXTRACTABLES
 QLast Update : Wed Jun 29 16:14:42 2022
 Response via : Initial Calibration
 Integrator: ChemStation

Volume Inj. : 2 µl
 Signal #1 Phase : ZB-MR1 Signal #2 Phase: ZB-MR2
 Signal #1 Info : 30Mx0.32mmx 0.50µ Signal #2 Info : 30M x 0.32mm x 0.25µm

Compound	RT#1	RT#2	Resp#1	Resp#2	ng/ml	ng/ml
System Monitoring Compounds						
1) SA Tetrachlo...	4.685	4.044	222.1E6	185.4E6	17.349	17.102
2) SA Decachlor...	10.603	9.178	235.1E6	147.9E6	19.541	19.721
Target Compounds						
3) L1 AR-1016-1	5.869	5.148	8243025	7930831	25.565	22.713
4) L1 AR-1016-2	5.893	5.167	14528172	10847151	25.801	21.619
5) L1 AR-1016-3	5.955	5.348	9476531	5663314	26.136	22.453
6) L1 AR-1016-4	6.056	5.386	7563573	4770690	24.830	23.911
7) L1 AR-1016-5	6.350	5.604	6848635	7497923	28.223	28.838
8) L2 AR-1221-1	4.901	4.257	255303	878190	2.268	9.364 #
9) L2 AR-1221-2	4.992	4.352	7342965	4951151	82.073	70.978
10) L2 AR-1221-3	5.064	4.425	6509981	5812307	23.705	25.879
11) L3 AR-1232-1	5.064	4.425	6509981	5812307	26.438	28.730
12) L3 AR-1232-2	5.600	5.167	7354856	10847151	63.730	56.425
13) L3 AR-1232-3	5.893	5.348	14528172	5663314	65.746	60.283
14) L3 AR-1232-4	6.056	5.430	7563573	5752890	62.515	67.982
15) L3 AR-1232-5	6.143	5.604	4835743	7497923	66.954	79.833
16) L4 AR-1242-1	5.869	5.148	8243025	7930831	38.897	34.987
17) L4 AR-1242-2	5.893	5.167	14528172	10847151	39.907	34.052
18) L4 AR-1242-3	5.955	5.348	9476531	5663314	39.907	35.005
19) L4 AR-1242-4	6.056	5.430	7563573	5752890	38.272	36.110
20) L4 AR-1242-5	6.794	5.956	7342320	5776869	42.962	30.872 #
21) L5 AR-1248-1	5.869	5.148	8243025	7930831	58.465	53.368
22) L5 AR-1248-2	6.143	5.386	4835743	4770690	25.714	24.468
23) L5 AR-1248-3	6.350	5.430	6848635	5752890	30.230	28.605
24) L5 AR-1248-4	6.755	5.604	6162486	7497923	25.620	30.723
25) L5 AR-1248-5	6.794	5.999	7342320	5318247	28.887	23.820
26) L6 AR-1254-1	6.727	5.956	4871414	5776869	16.672	12.655
27) L6 AR-1254-2	6.954	6.103	5891150	1648621	12.902	4.097 #
28) L6 AR-1254-3	7.314	6.514	2258551	2651014	4.357	4.041
29) L6 AR-1254-4	7.602	6.740	1382786	1276495	3.671	3.210
30) L6 AR-1254-5	8.020	7.160	1215674	454242	2.740	0.805 #
31) L7 AR-1260-1	7.478	6.660	673825	878692	1.673	1.867
32) L7 AR-1260-2	7.715f	6.824	1506749	1074449	3.119	1.906 #
33) L7 AR-1260-3	8.020	6.990	1215674	785007	1.891	1.507
34) L7 AR-1260-4	8.323	7.459	815937	269292	1.853	0.701 #
35) L7 AR-1260-5	8.667	7.688	667516	339075	0.674	0.365 #
36) L8 AR-1262-1	8.097	7.160	415158	454242	0.801	1.612 #
37) L8 AR-1262-2	8.667	7.688	667516	339075	0.611	0.327 #
38) L8 AR-1262-3	8.992	7.984	161853	610805	0.296	1.575 #
39) L8 AR-1262-4	9.101	8.046	454661	591099	1.087	0.804 #
40) L8 AR-1262-5	9.806	8.590f	393907	532895	0.837	1.639 #
41) L9 AR-1268-1	9.005	7.984	125085	610805	0.095	0.569 #

Data Path : Z:\pestpcbsrv\HPCHEM1\ECD_Q\Data\PQ062922\
 Data File : PQ058454.D
 Signal(s) : Signal #1: ECD1A.ch Signal #2: ECD2B.ch
 Acq On : 30 Jun 2022 01:03
 Operator : YP\AJ
 Sample : N3214-07
 Misc : AR1242 LOD 40 PPB
 ALS Vial : 33 Sample Multiplier: 1

Instrument :
 ECD_Q
 ClientSampleId :

Integration File signal 1: autoint1.e
 Integration File signal 2: autoint2.e
 Quant Time: Jun 30 04:27:02 2022
 Quant Method : Z:\pestpcbsrv\HPCHEM1\ECD_Q\Method\PQ062922.M
 Quant Title : GC EXTRACTABLES
 QLast Update : Wed Jun 29 16:14:42 2022
 Response via : Initial Calibration
 Integrator: ChemStation

Volume Inj. : 2 µl
 Signal #1 Phase : ZB-MR1 Signal #2 Phase: ZB-MR2
 Signal #1 Info : 30Mx0.32mmx 0.50µ Signal #2 Info : 30M x 0.32mm x 0.25µm

	Compound	RT#1	RT#2	Resp#1	Resp#2	ng/ml	ng/ml
42)	L9 AR-1268-2	9.101	8.046	454661	591099	0.332	0.601 #
43)	L9 AR-1268-3	9.346	8.288f	1203521	100935	0.966	0.122 #
44)	L9 AR-1268-4	9.806	8.590f	393907	532895	0.821	1.620 #
45)	L9 AR-1268-5	10.242	8.892	1323033	601485	0.336	0.225 #

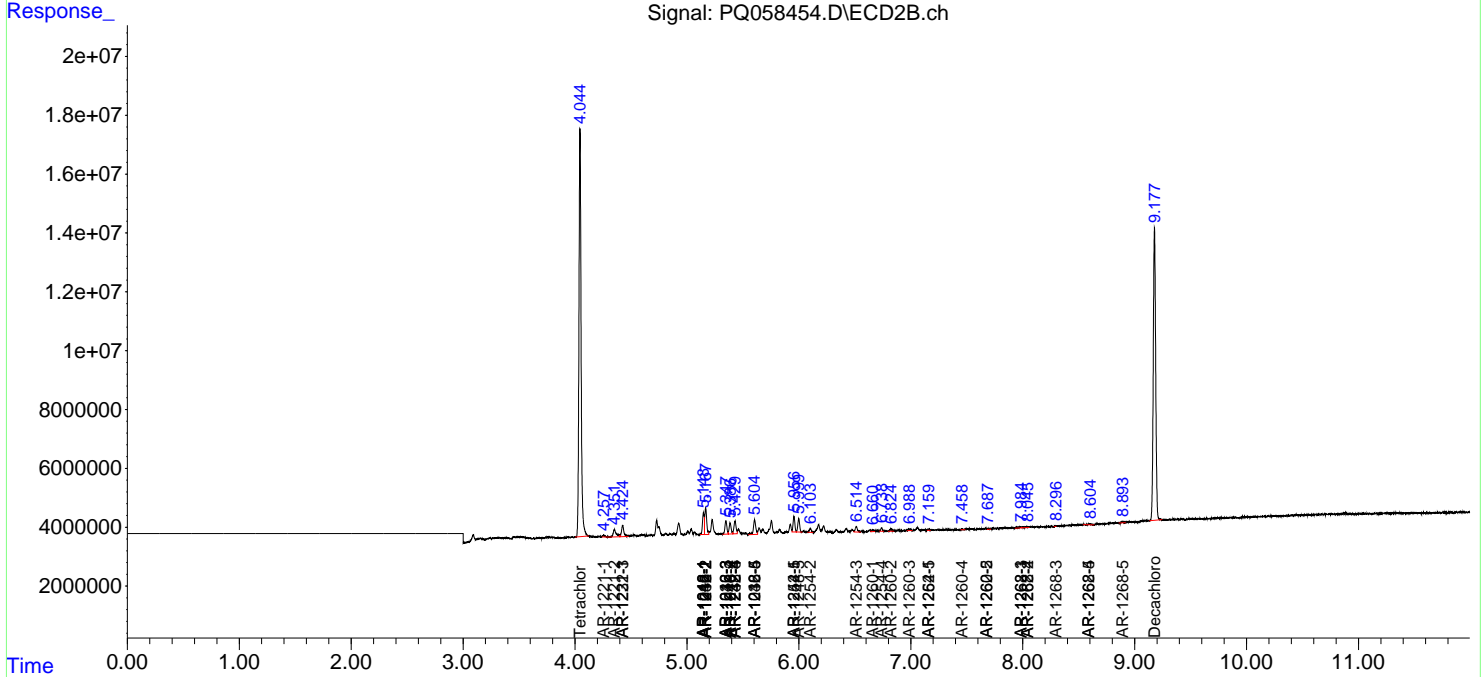
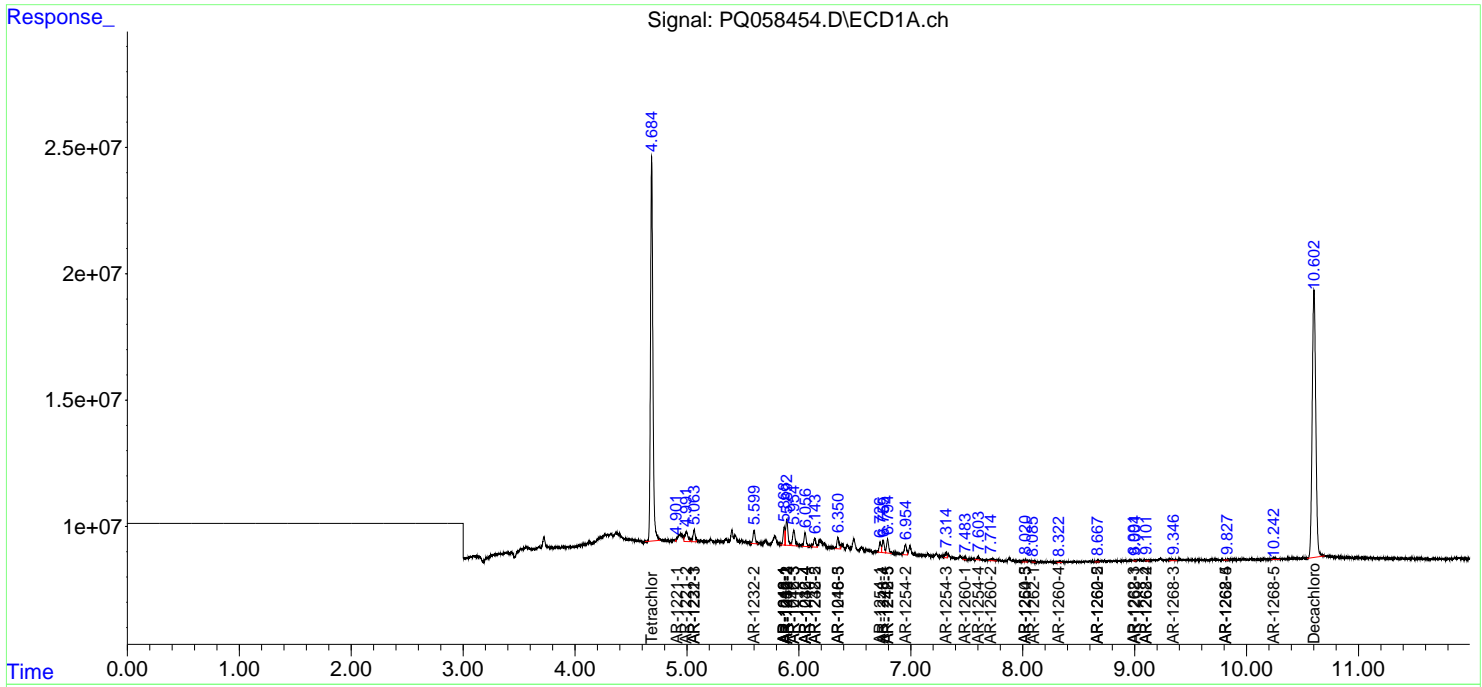
(f)=RT Delta > 1/2 Window (#)=Amounts differ by > 25% (m)=manual int.

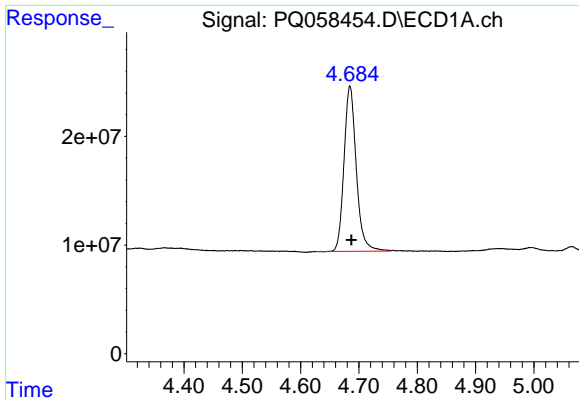
Data Path : Z:\pestpcbsrv\HPCHEM1\ECD_Q\Data\PQ062922\
 Data File : PQ058454.D
 Signal(s) : Signal #1: ECD1A.ch Signal #2: ECD2B.ch
 Acq On : 30 Jun 2022 01:03
 Operator : YP\AJ
 Sample : N3214-07
 Misc : AR1242 LOD 40 PPB
 ALS Vial : 33 Sample Multiplier: 1

Instrument :
 ECD_Q
 ClientSampleId :

Integration File signal 1: autoint1.e
 Integration File signal 2: autoint2.e
 Quant Time: Jun 30 04:27:02 2022
 Quant Method : Z:\pestpcbsrv\HPCHEM1\ECD_Q\Method\PQ062922.M
 Quant Title : GC EXTRACTABLES
 QLast Update : Wed Jun 29 16:14:42 2022
 Response via : Initial Calibration
 Integrator: ChemStation

Volume Inj. : 2 µl
 Signal #1 Phase : ZB-MR1 Signal #2 Phase: ZB-MR2
 Signal #1 Info : 30Mx0.32mmx 0.50µ Signal #2 Info : 30M x 0.32mm x 0.25µm

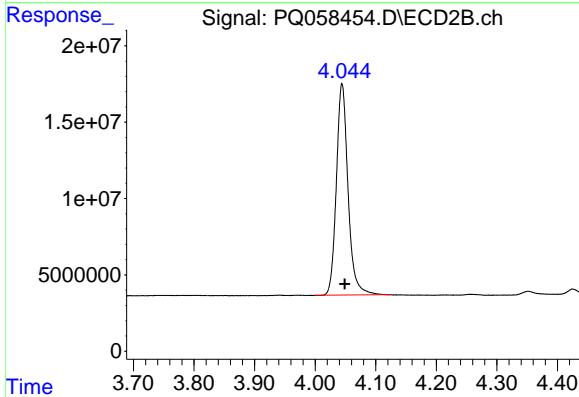




#1 Tetrachloro-m-xylene

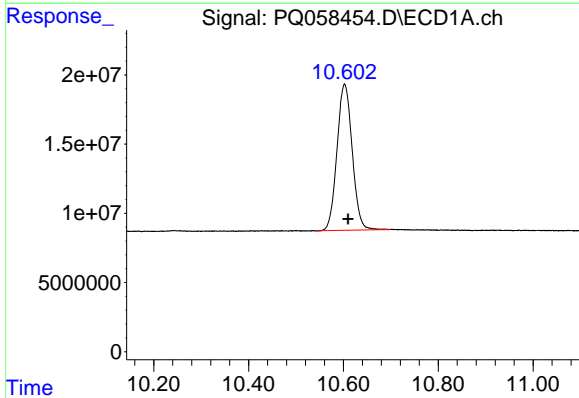
R.T.: 4.685 min
 Delta R.T.: -0.002 min
 Response: 222091733
 Conc: 17.35 ng/ml

Instrument :
 ECD_Q
 ClientSampleId :



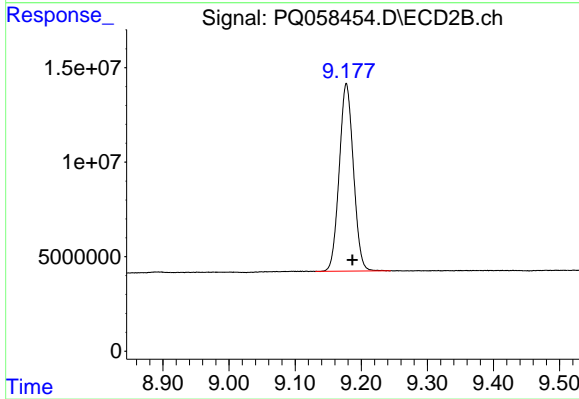
#1 Tetrachloro-m-xylene

R.T.: 4.044 min
 Delta R.T.: -0.004 min
 Response: 185352079
 Conc: 17.10 ng/ml



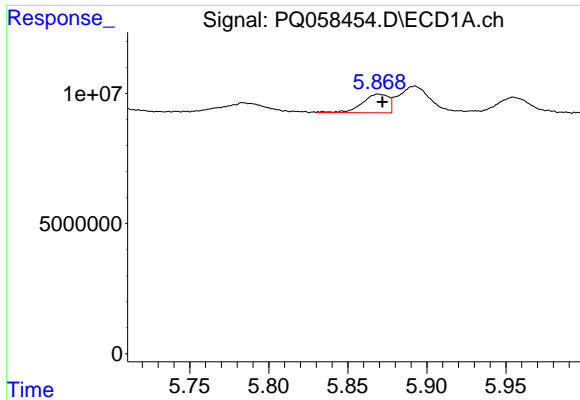
#2 Decachlorobiphenyl

R.T.: 10.603 min
 Delta R.T.: -0.007 min
 Response: 235117467
 Conc: 19.54 ng/ml



#2 Decachlorobiphenyl

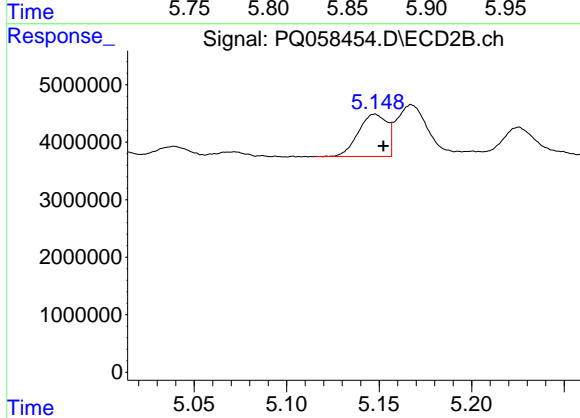
R.T.: 9.178 min
 Delta R.T.: -0.009 min
 Response: 147886104
 Conc: 19.72 ng/ml



#3 AR-1016-1

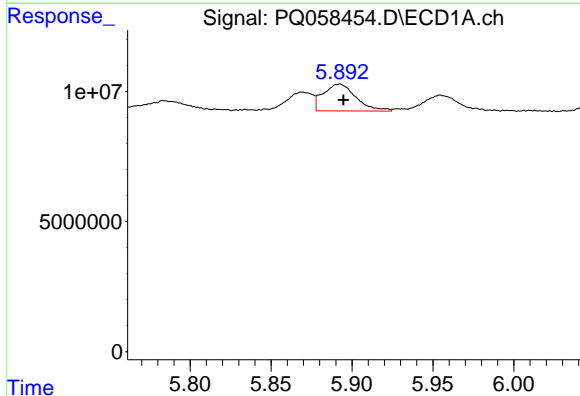
R.T.: 5.869 min
 Delta R.T.: -0.003 min
 Response: 8243025
 Conc: 25.56 ng/ml

Instrument :
 ECD_Q
 ClientSampleId :



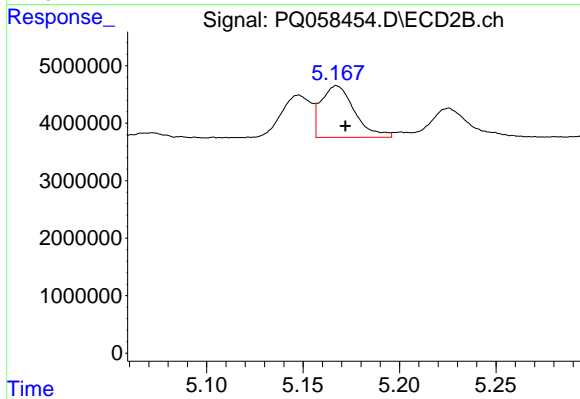
#3 AR-1016-1

R.T.: 5.148 min
 Delta R.T.: -0.005 min
 Response: 7930831
 Conc: 22.71 ng/ml



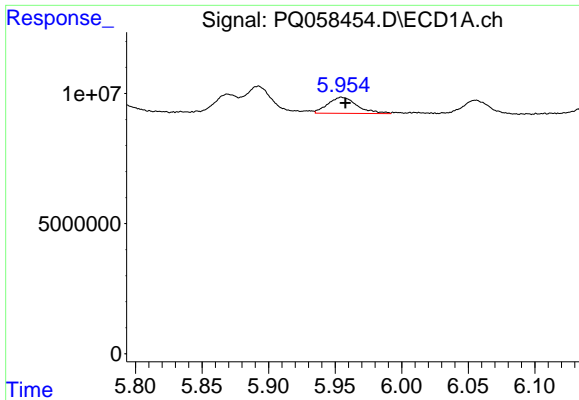
#4 AR-1016-2

R.T.: 5.893 min
 Delta R.T.: -0.002 min
 Response: 14528172
 Conc: 25.80 ng/ml



#4 AR-1016-2

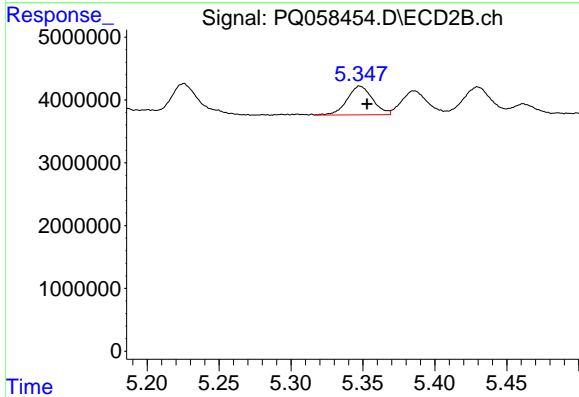
R.T.: 5.167 min
 Delta R.T.: -0.005 min
 Response: 10847151
 Conc: 21.62 ng/ml



#5 AR-1016-3

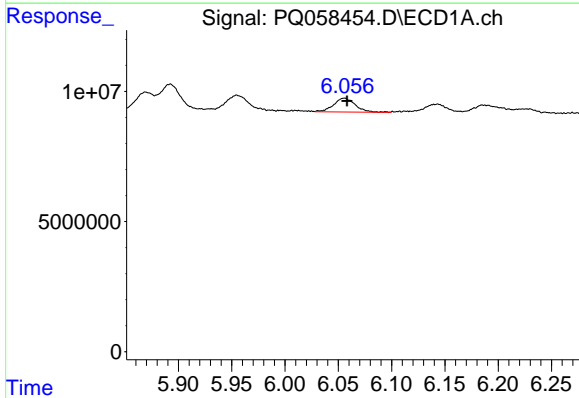
R.T.: 5.955 min
 Delta R.T.: -0.003 min
 Response: 9476531
 Conc: 26.14 ng/ml

Instrument :
 ECD_Q
 ClientSampleId :



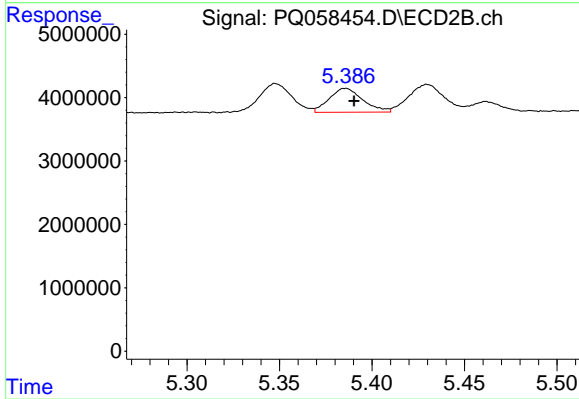
#5 AR-1016-3

R.T.: 5.348 min
 Delta R.T.: -0.005 min
 Response: 5663314
 Conc: 22.45 ng/ml



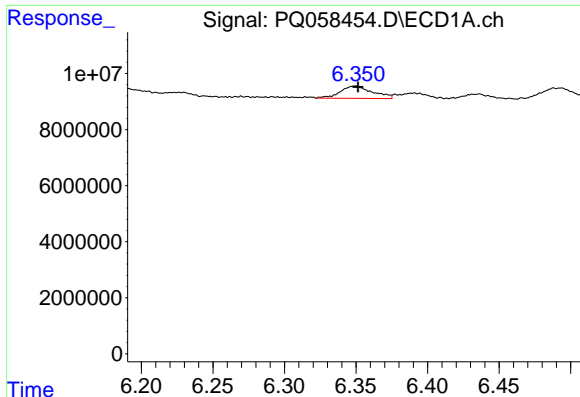
#6 AR-1016-4

R.T.: 6.056 min
 Delta R.T.: -0.002 min
 Response: 7563573
 Conc: 24.83 ng/ml



#6 AR-1016-4

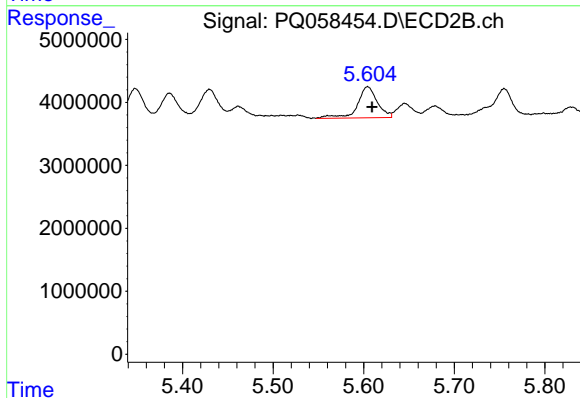
R.T.: 5.386 min
 Delta R.T.: -0.005 min
 Response: 4770690
 Conc: 23.91 ng/ml



#7 AR-1016-5

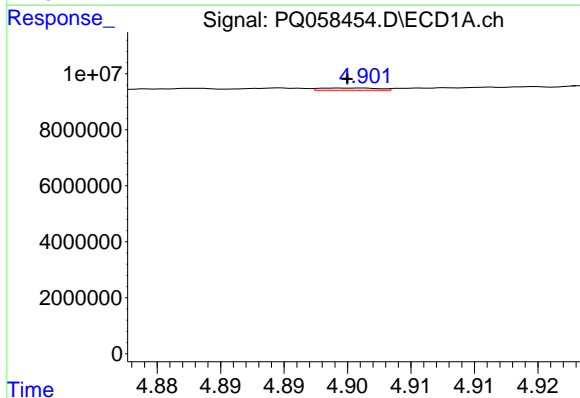
R.T.: 6.350 min
 Delta R.T.: -0.002 min
 Response: 6848635
 Conc: 28.22 ng/ml

Instrument :
 ECD_Q
 ClientSampleId :



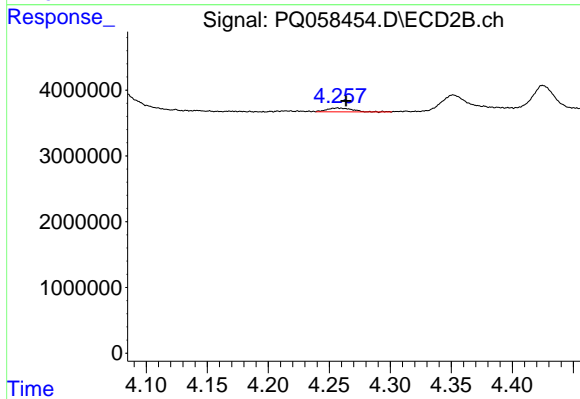
#7 AR-1016-5

R.T.: 5.604 min
 Delta R.T.: -0.005 min
 Response: 7497923
 Conc: 28.84 ng/ml



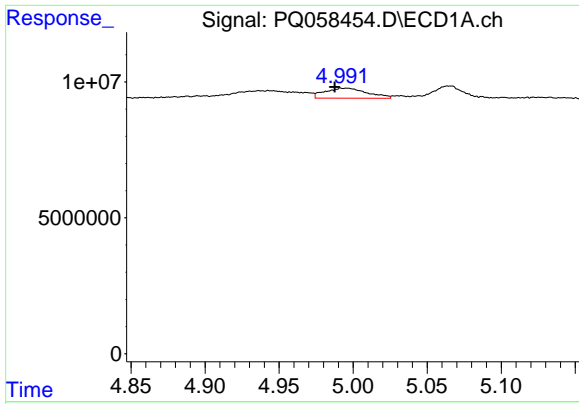
#8 AR-1221-1

R.T.: 4.901 min
 Delta R.T.: 0.000 min
 Response: 255303
 Conc: 2.27 ng/ml



#8 AR-1221-1

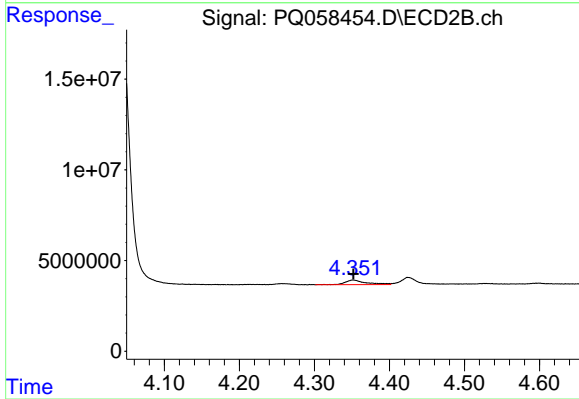
R.T.: 4.257 min
 Delta R.T.: -0.007 min
 Response: 878190
 Conc: 9.36 ng/ml



#9 AR-1221-2

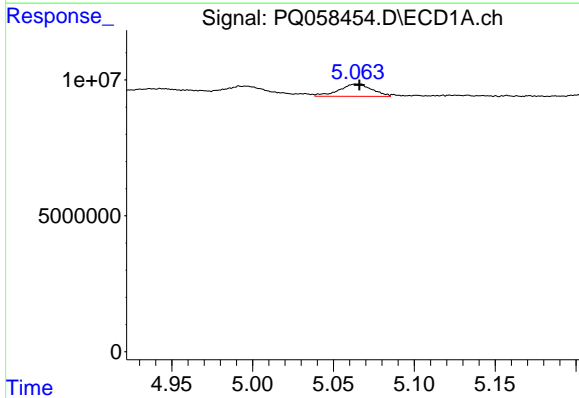
R.T.: 4.992 min
 Delta R.T.: 0.004 min
 Response: 7342965
 Conc: 82.07 ng/ml

Instrument :
 ECD_Q
 ClientSampleId :



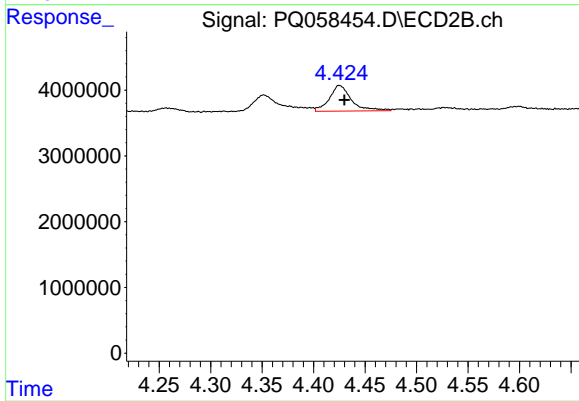
#9 AR-1221-2

R.T.: 4.352 min
 Delta R.T.: 0.000 min
 Response: 4951151
 Conc: 70.98 ng/ml



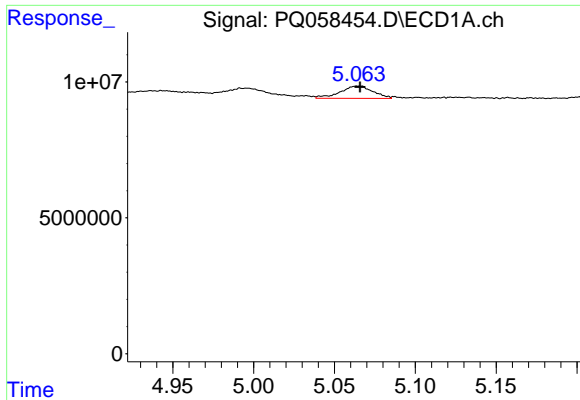
#10 AR-1221-3

R.T.: 5.064 min
 Delta R.T.: -0.002 min
 Response: 6509981
 Conc: 23.71 ng/ml



#10 AR-1221-3

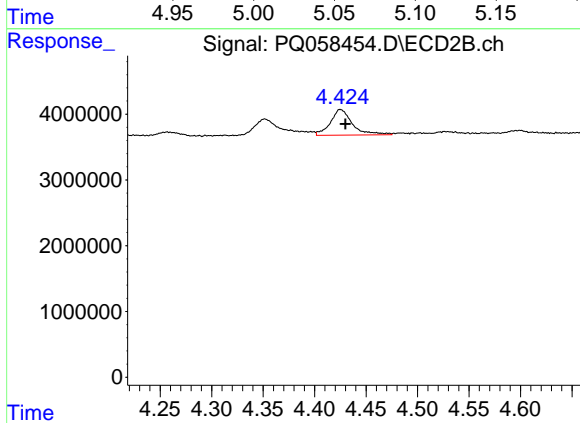
R.T.: 4.425 min
 Delta R.T.: -0.005 min
 Response: 5812307
 Conc: 25.88 ng/ml



#11 AR-1232-1

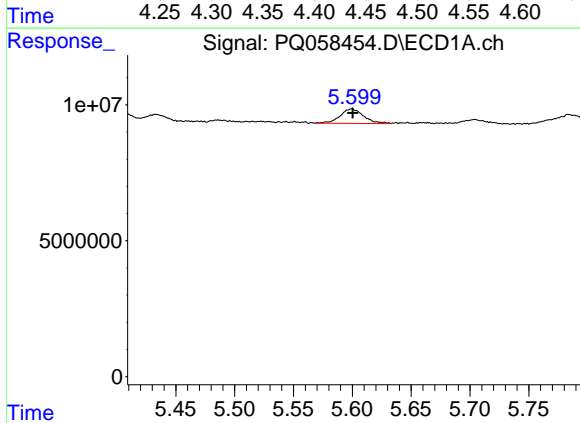
R.T.: 5.064 min
 Delta R.T.: -0.001 min
 Response: 6509981
 Conc: 26.44 ng/ml

Instrument :
 ECD_Q
 ClientSampleId :



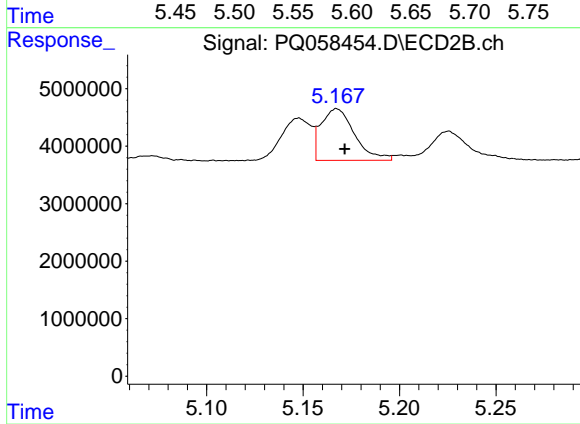
#11 AR-1232-1

R.T.: 4.425 min
 Delta R.T.: -0.005 min
 Response: 5812307
 Conc: 28.73 ng/ml



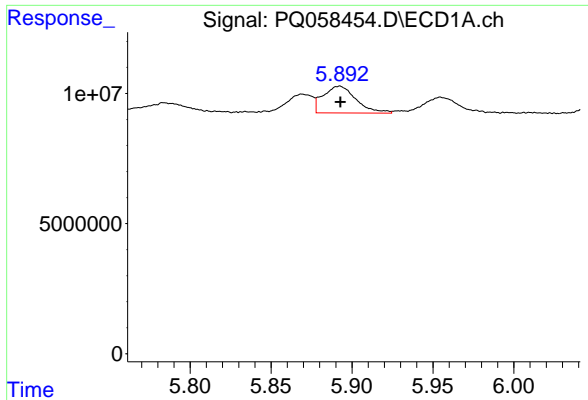
#12 AR-1232-2

R.T.: 5.600 min
 Delta R.T.: 0.000 min
 Response: 7354856
 Conc: 63.73 ng/ml



#12 AR-1232-2

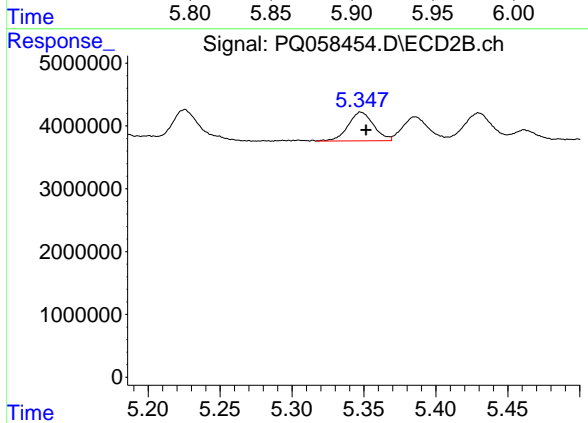
R.T.: 5.167 min
 Delta R.T.: -0.004 min
 Response: 10847151
 Conc: 56.43 ng/ml



#13 AR-1232-3

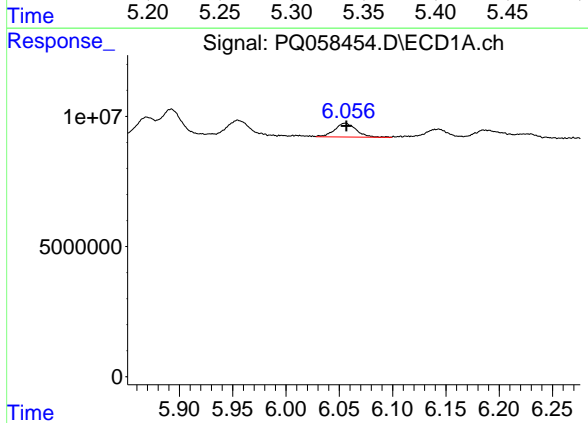
R.T.: 5.893 min
 Delta R.T.: 0.000 min
 Response: 14528172
 Conc: 65.75 ng/ml

Instrument :
 ECD_Q
 ClientSampleId :



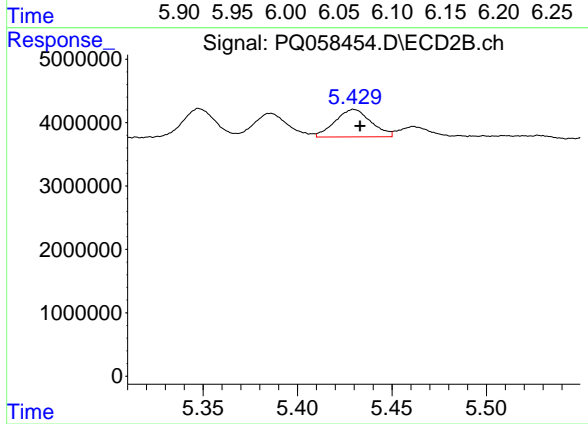
#13 AR-1232-3

R.T.: 5.348 min
 Delta R.T.: -0.004 min
 Response: 5663314
 Conc: 60.28 ng/ml



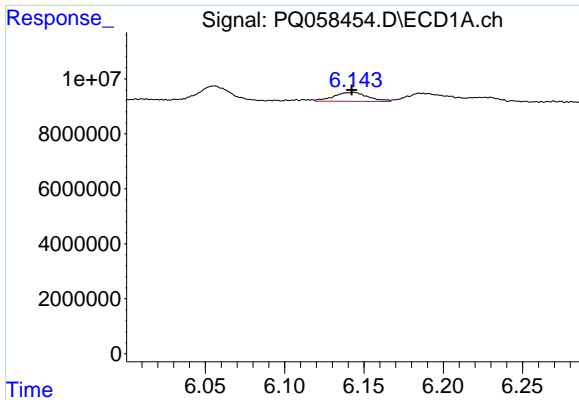
#14 AR-1232-4

R.T.: 6.056 min
 Delta R.T.: 0.000 min
 Response: 7563573
 Conc: 62.52 ng/ml



#14 AR-1232-4

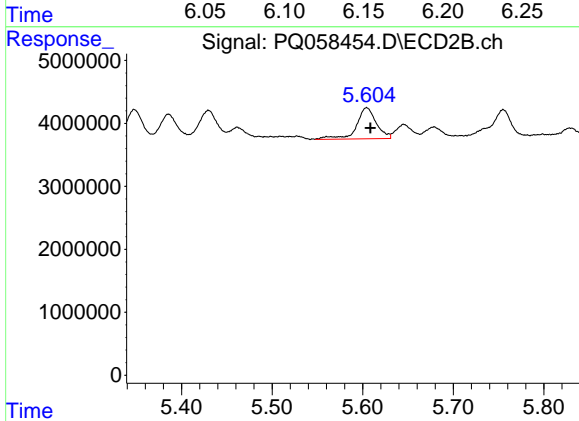
R.T.: 5.430 min
 Delta R.T.: -0.003 min
 Response: 5752890
 Conc: 67.98 ng/ml



#15 AR-1232-5

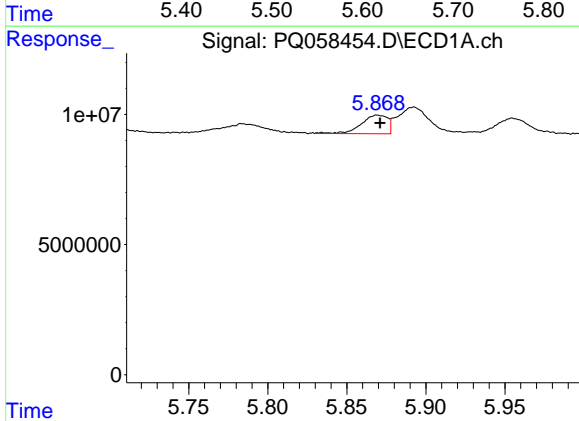
R.T.: 6.143 min
 Delta R.T.: 0.001 min
 Response: 4835743
 Conc: 66.95 ng/ml

Instrument :
 ECD_Q
 ClientSampleId :



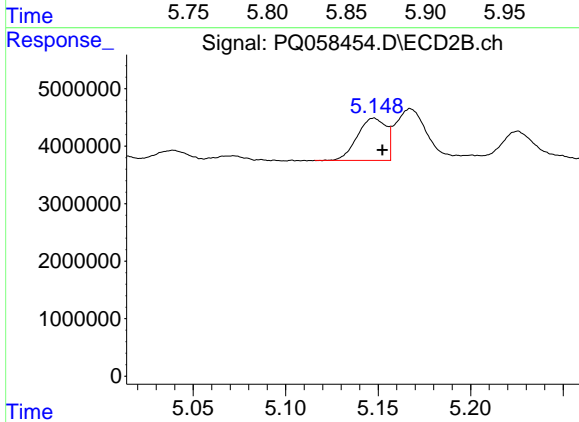
#15 AR-1232-5

R.T.: 5.604 min
 Delta R.T.: -0.004 min
 Response: 7497923
 Conc: 79.83 ng/ml



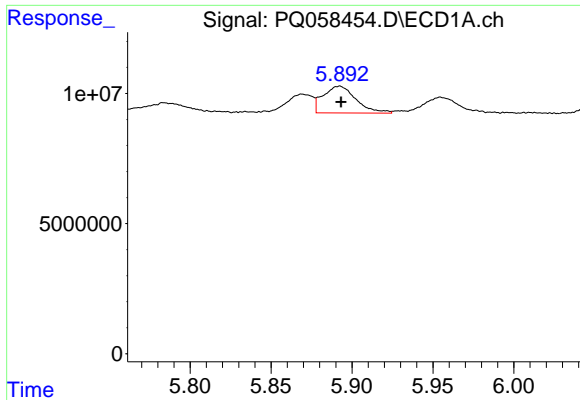
#16 AR-1242-1

R.T.: 5.869 min
 Delta R.T.: -0.002 min
 Response: 8243025
 Conc: 38.90 ng/ml



#16 AR-1242-1

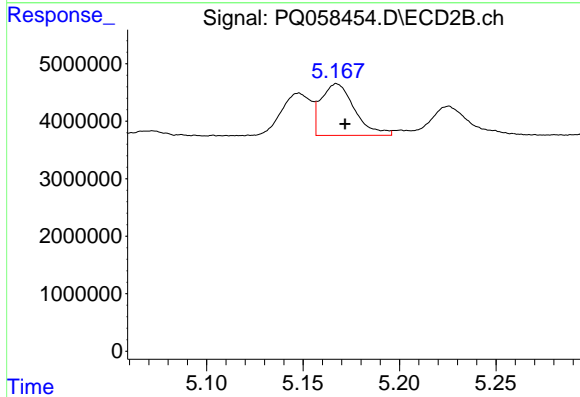
R.T.: 5.148 min
 Delta R.T.: -0.005 min
 Response: 7930831
 Conc: 34.99 ng/ml



#17 AR-1242-2

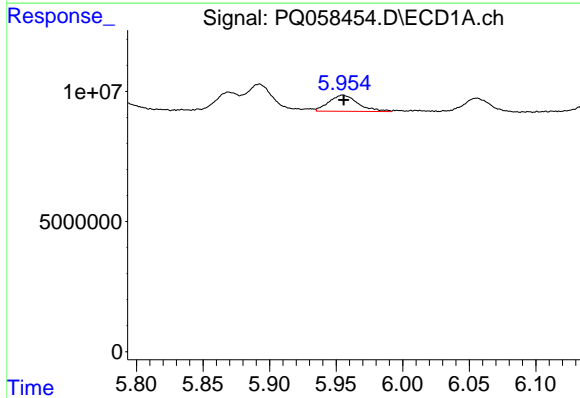
R.T.: 5.893 min
 Delta R.T.: 0.000 min
 Response: 14528172
 Conc: 39.91 ng/ml

Instrument :
 ECD_Q
 ClientSampleId :



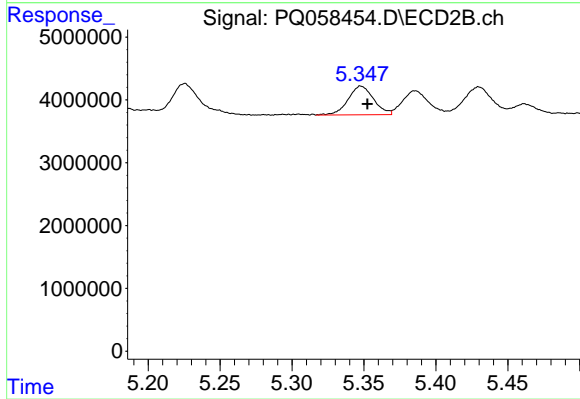
#17 AR-1242-2

R.T.: 5.167 min
 Delta R.T.: -0.004 min
 Response: 10847151
 Conc: 34.05 ng/ml



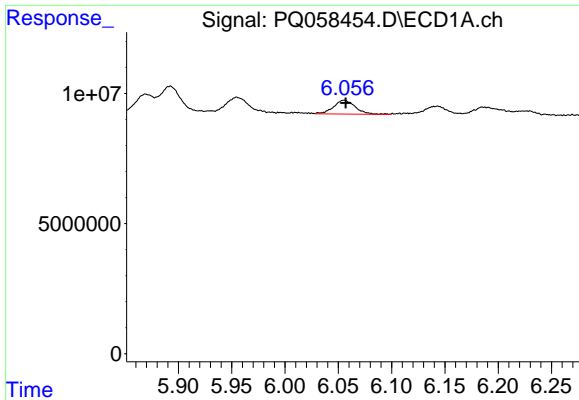
#18 AR-1242-3

R.T.: 5.955 min
 Delta R.T.: -0.001 min
 Response: 9476531
 Conc: 39.91 ng/ml



#18 AR-1242-3

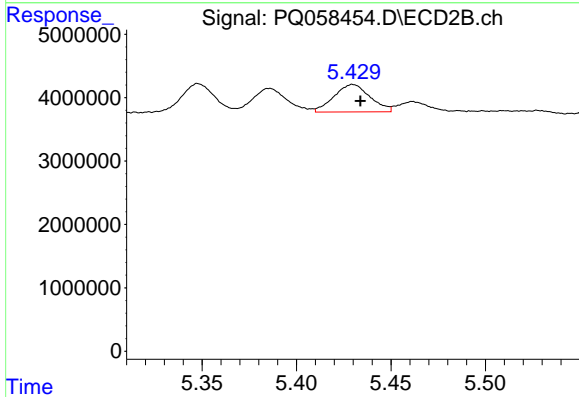
R.T.: 5.348 min
 Delta R.T.: -0.005 min
 Response: 5663314
 Conc: 35.00 ng/ml



#19 AR-1242-4

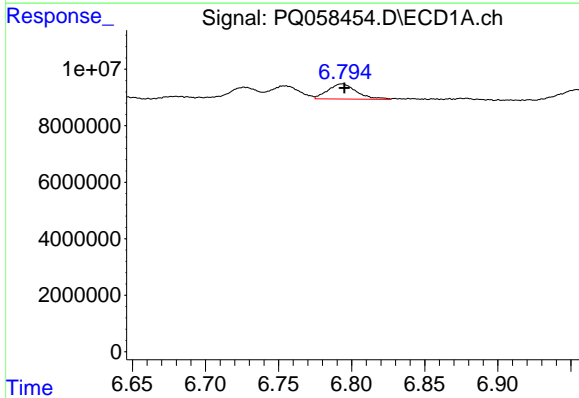
R.T.: 6.056 min
 Delta R.T.: 0.000 min
 Response: 7563573
 Conc: 38.27 ng/ml

Instrument :
 ECD_Q
 ClientSampleId :



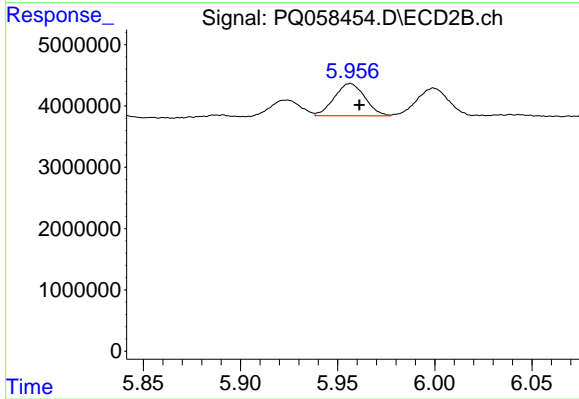
#19 AR-1242-4

R.T.: 5.430 min
 Delta R.T.: -0.004 min
 Response: 5752890
 Conc: 36.11 ng/ml



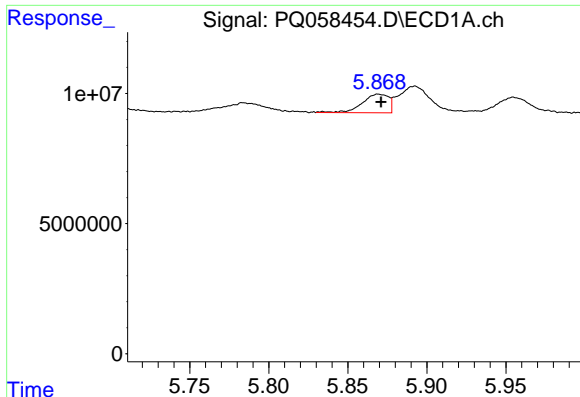
#20 AR-1242-5

R.T.: 6.794 min
 Delta R.T.: -0.001 min
 Response: 7342320
 Conc: 42.96 ng/ml



#20 AR-1242-5

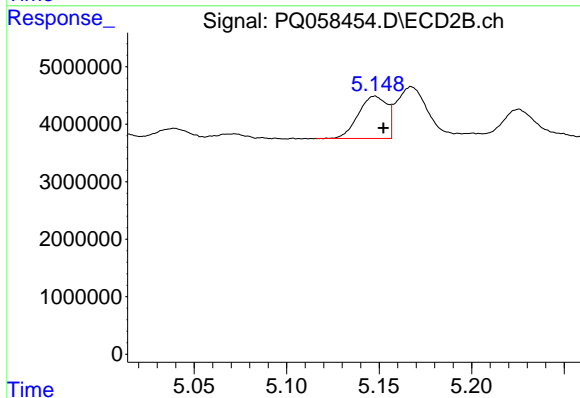
R.T.: 5.956 min
 Delta R.T.: -0.005 min
 Response: 5776869
 Conc: 30.87 ng/ml



#21 AR-1248-1

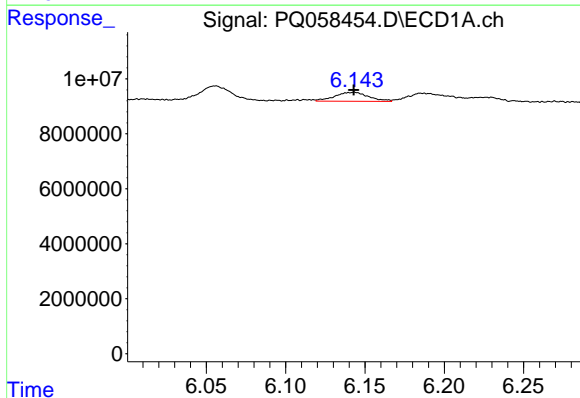
R.T.: 5.869 min
 Delta R.T.: -0.002 min
 Response: 8243025
 Conc: 58.46 ng/ml

Instrument :
 ECD_Q
 ClientSampleId :



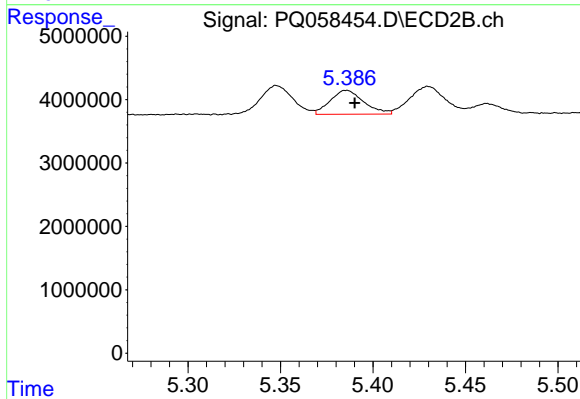
#21 AR-1248-1

R.T.: 5.148 min
 Delta R.T.: -0.005 min
 Response: 7930831
 Conc: 53.37 ng/ml



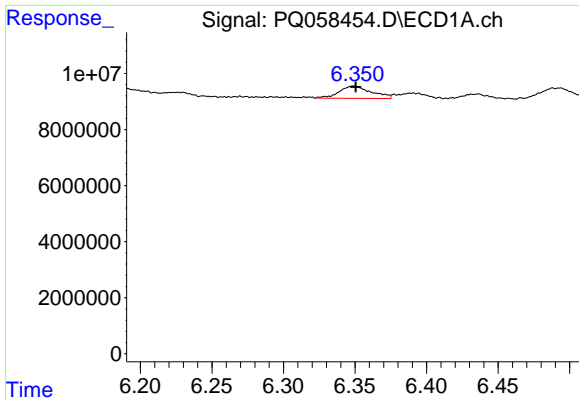
#22 AR-1248-2

R.T.: 6.143 min
 Delta R.T.: 0.000 min
 Response: 4835743
 Conc: 25.71 ng/ml



#22 AR-1248-2

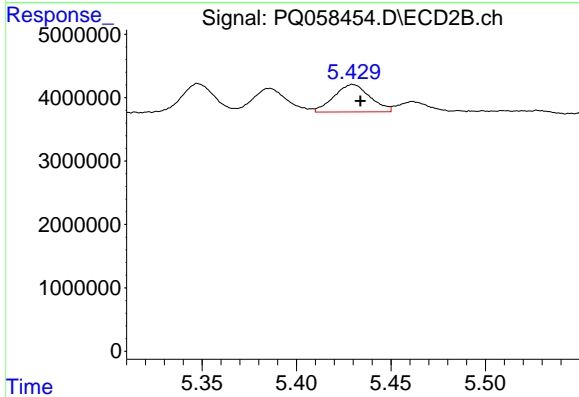
R.T.: 5.386 min
 Delta R.T.: -0.004 min
 Response: 4770690
 Conc: 24.47 ng/ml



#23 AR-1248-3

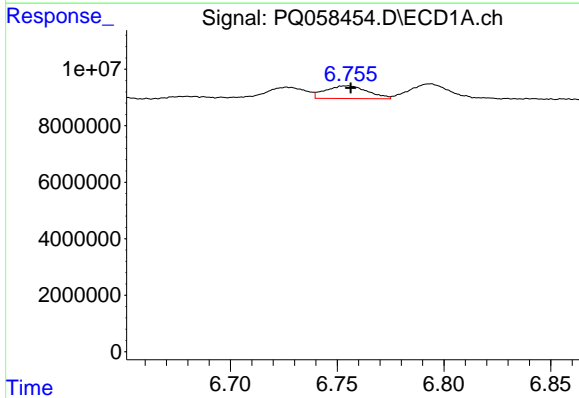
R.T.: 6.350 min
 Delta R.T.: 0.000 min
 Response: 6848635
 Conc: 30.23 ng/ml

Instrument :
 ECD_Q
 ClientSampleId :



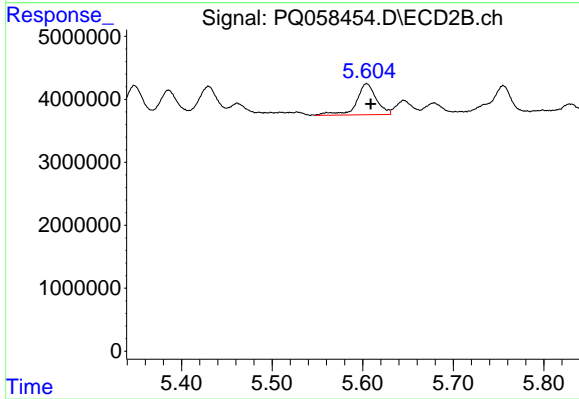
#23 AR-1248-3

R.T.: 5.430 min
 Delta R.T.: -0.004 min
 Response: 5752890
 Conc: 28.60 ng/ml



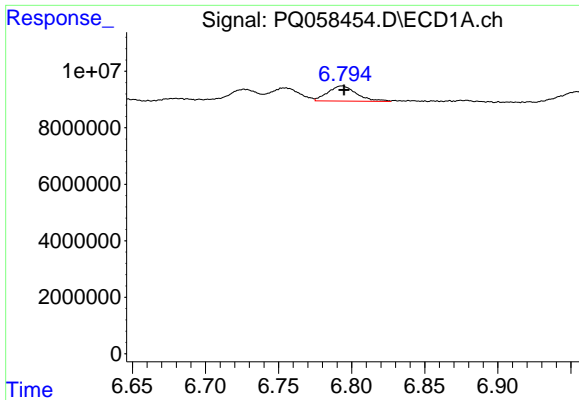
#24 AR-1248-4

R.T.: 6.755 min
 Delta R.T.: -0.002 min
 Response: 6162486
 Conc: 25.62 ng/ml



#24 AR-1248-4

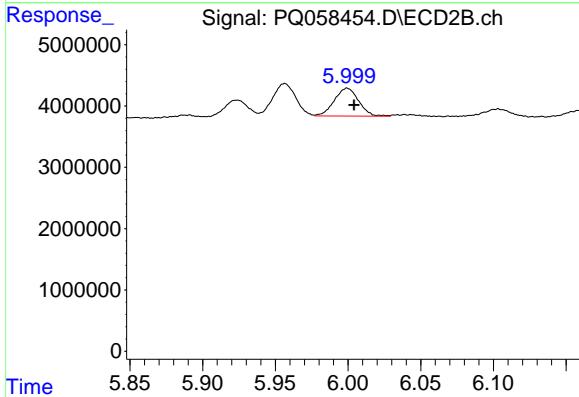
R.T.: 5.604 min
 Delta R.T.: -0.004 min
 Response: 7497923
 Conc: 30.72 ng/ml



#25 AR-1248-5

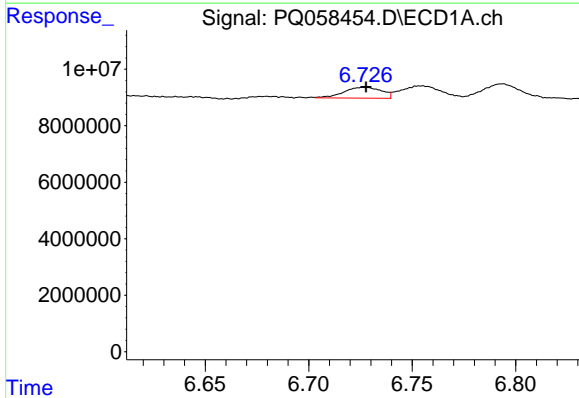
R.T.: 6.794 min
 Delta R.T.: 0.000 min
 Response: 7342320
 Conc: 28.89 ng/ml

Instrument :
 ECD_Q
 ClientSampleId :



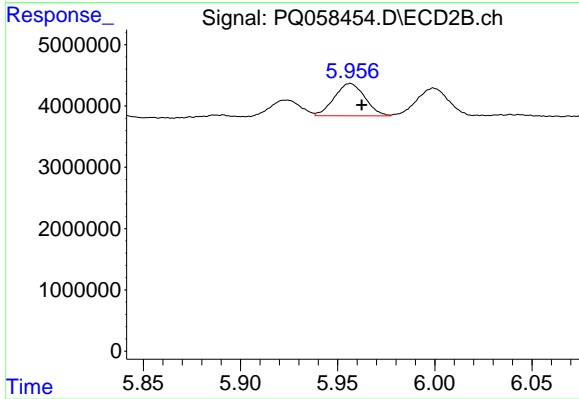
#25 AR-1248-5

R.T.: 5.999 min
 Delta R.T.: -0.005 min
 Response: 5318247
 Conc: 23.82 ng/ml



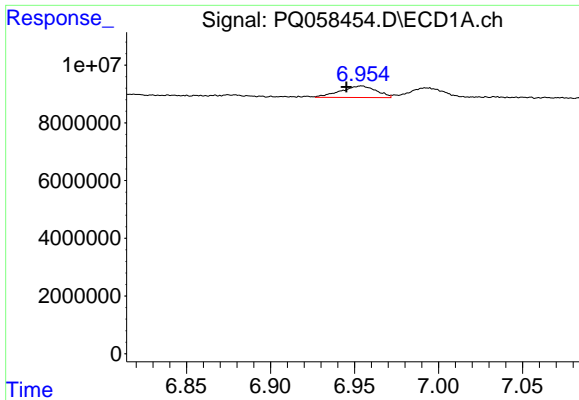
#26 AR-1254-1

R.T.: 6.727 min
 Delta R.T.: -0.001 min
 Response: 4871414
 Conc: 16.67 ng/ml



#26 AR-1254-1

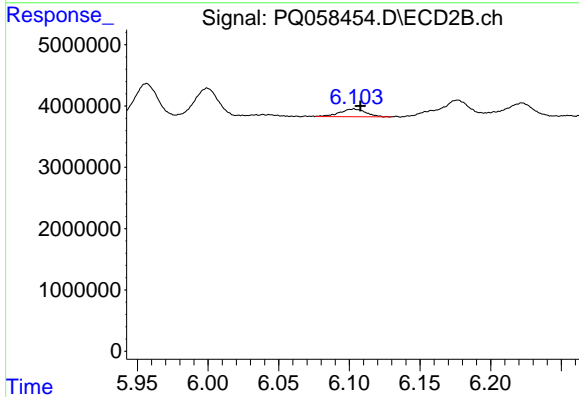
R.T.: 5.956 min
 Delta R.T.: -0.006 min
 Response: 5776869
 Conc: 12.65 ng/ml



#27 AR-1254-2

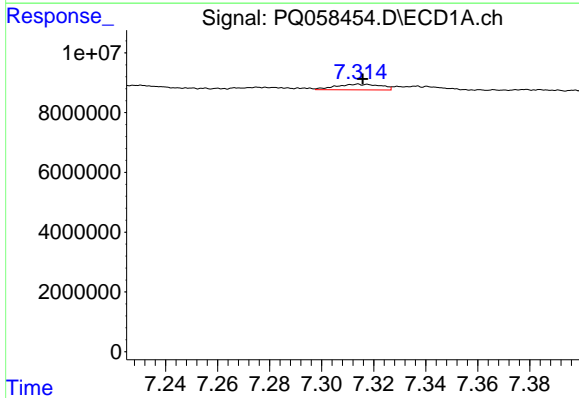
R.T.: 6.954 min
 Delta R.T.: 0.009 min
 Response: 5891150
 Conc: 12.90 ng/ml

Instrument :
 ECD_Q
 ClientSampleId :



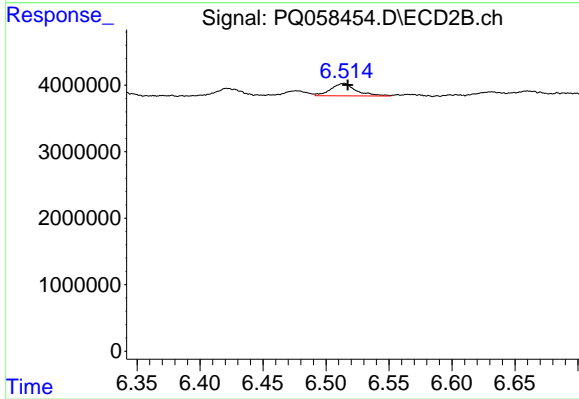
#27 AR-1254-2

R.T.: 6.103 min
 Delta R.T.: -0.005 min
 Response: 1648621
 Conc: 4.10 ng/ml



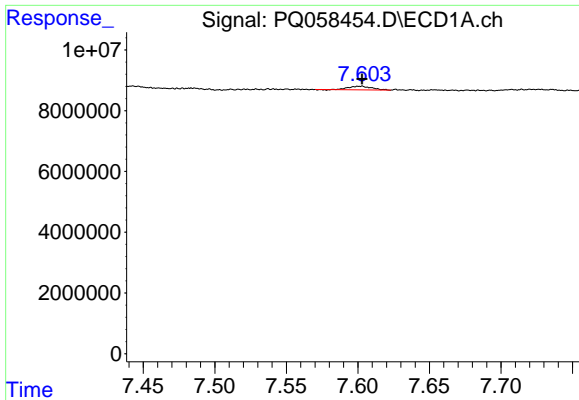
#28 AR-1254-3

R.T.: 7.314 min
 Delta R.T.: -0.002 min
 Response: 2258551
 Conc: 4.36 ng/ml



#28 AR-1254-3

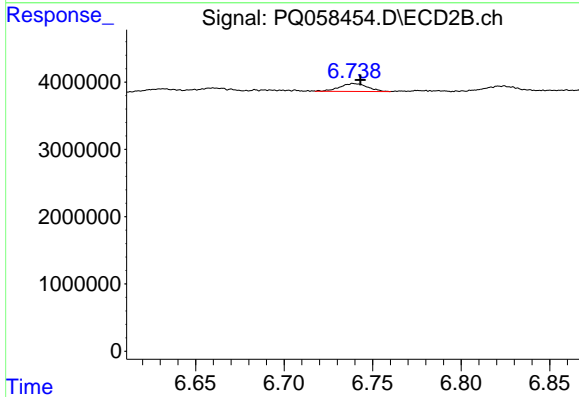
R.T.: 6.514 min
 Delta R.T.: -0.003 min
 Response: 2651014
 Conc: 4.04 ng/ml



#29 AR-1254-4

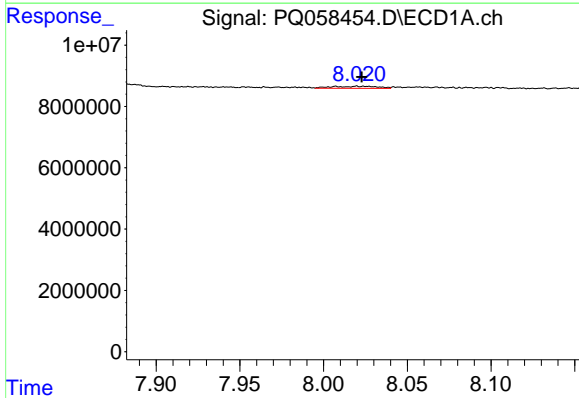
R.T.: 7.602 min
 Delta R.T.: -0.001 min
 Response: 1382786
 Conc: 3.67 ng/ml

Instrument :
 ECD_Q
 ClientSampleId :



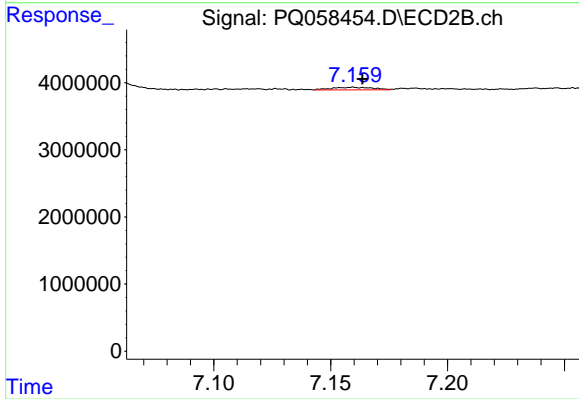
#29 AR-1254-4

R.T.: 6.740 min
 Delta R.T.: -0.003 min
 Response: 1276495
 Conc: 3.21 ng/ml



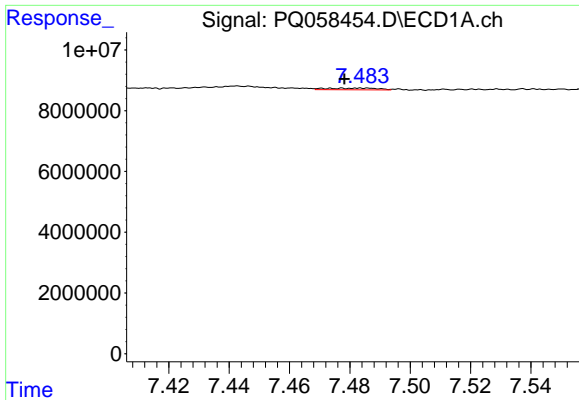
#30 AR-1254-5

R.T.: 8.020 min
 Delta R.T.: -0.003 min
 Response: 1215674
 Conc: 2.74 ng/ml



#30 AR-1254-5

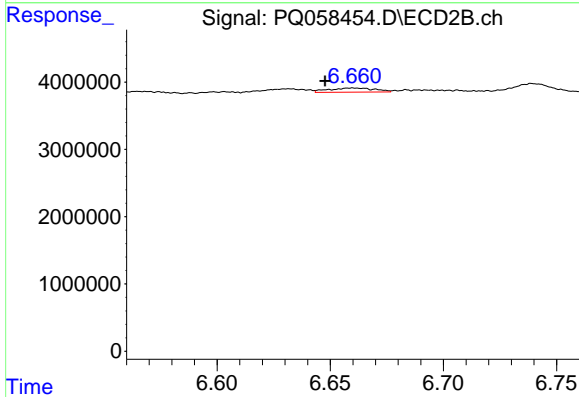
R.T.: 7.160 min
 Delta R.T.: -0.004 min
 Response: 454242
 Conc: 0.81 ng/ml



#31 AR-1260-1

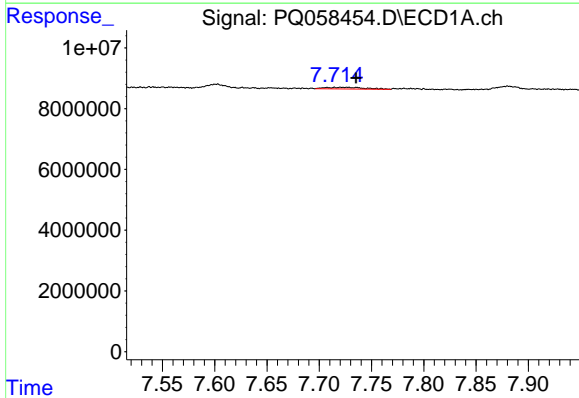
R.T.: 7.478 min
 Delta R.T.: 0.000 min
 Response: 673825
 Conc: 1.67 ng/ml

Instrument :
 ECD_Q
 ClientSampleId :



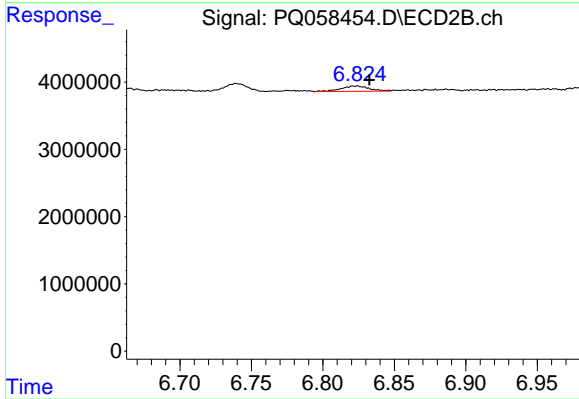
#31 AR-1260-1

R.T.: 6.660 min
 Delta R.T.: 0.012 min
 Response: 878692
 Conc: 1.87 ng/ml



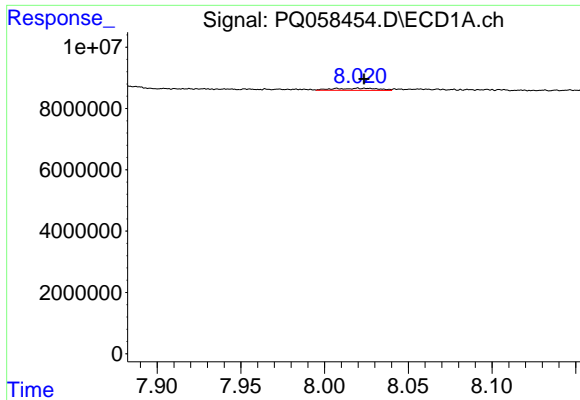
#32 AR-1260-2

R.T.: 7.715 min
 Delta R.T.: -0.020 min
 Response: 1506749
 Conc: 3.12 ng/ml



#32 AR-1260-2

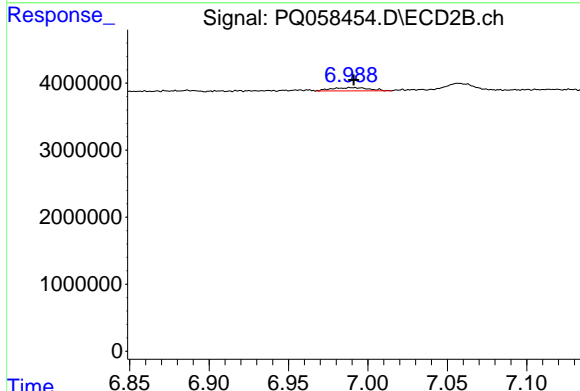
R.T.: 6.824 min
 Delta R.T.: -0.009 min
 Response: 1074449
 Conc: 1.91 ng/ml



#33 AR-1260-3

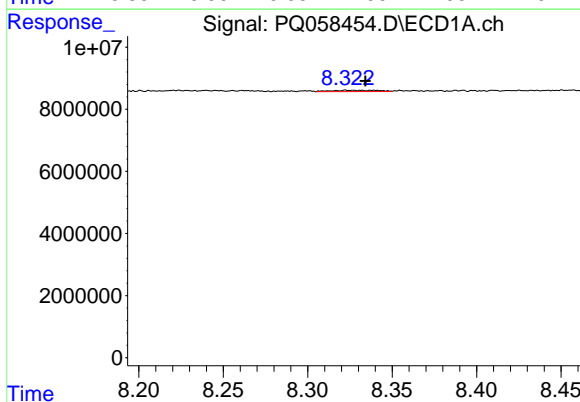
R.T.: 8.020 min
 Delta R.T.: -0.004 min
 Response: 1215674
 Conc: 1.89 ng/ml

Instrument :
 ECD_Q
 ClientSampleId :



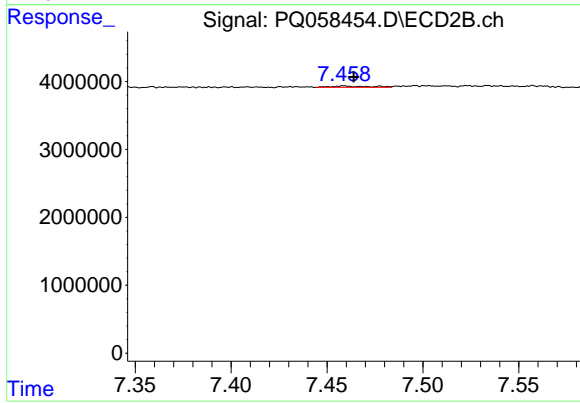
#33 AR-1260-3

R.T.: 6.990 min
 Delta R.T.: -0.001 min
 Response: 785007
 Conc: 1.51 ng/ml



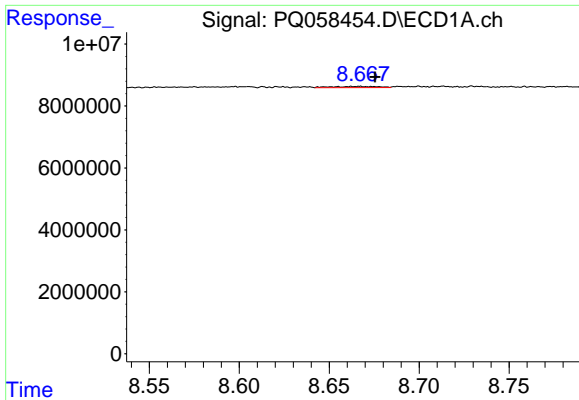
#34 AR-1260-4

R.T.: 8.323 min
 Delta R.T.: -0.011 min
 Response: 815937
 Conc: 1.85 ng/ml



#34 AR-1260-4

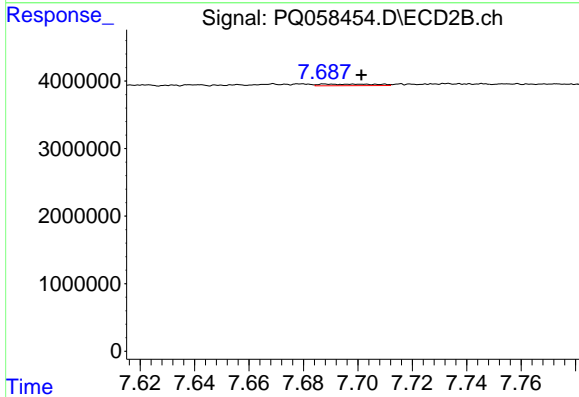
R.T.: 7.459 min
 Delta R.T.: -0.005 min
 Response: 269292
 Conc: 0.70 ng/ml



#35 AR-1260-5

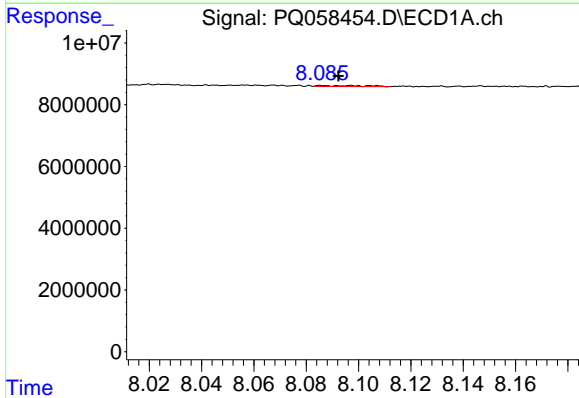
R.T.: 8.667 min
 Delta R.T.: -0.008 min
 Response: 667516
 Conc: 0.67 ng/ml

Instrument :
 ECD_Q
 ClientSampleId :



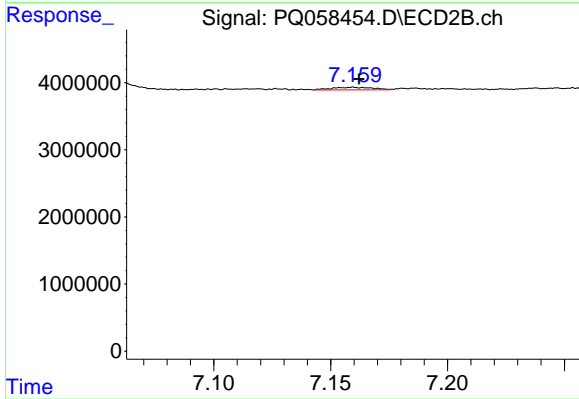
#35 AR-1260-5

R.T.: 7.688 min
 Delta R.T.: -0.013 min
 Response: 339075
 Conc: 0.36 ng/ml



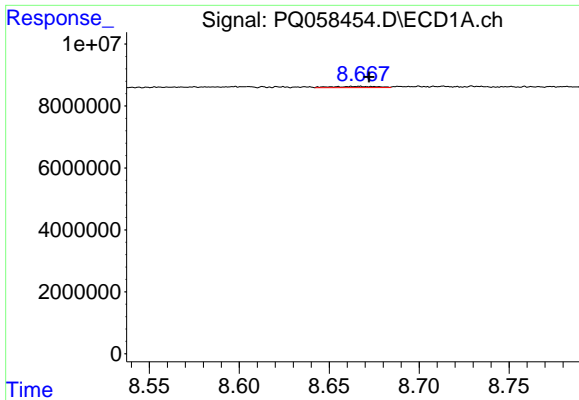
#36 AR-1262-1

R.T.: 8.097 min
 Delta R.T.: 0.005 min
 Response: 415158
 Conc: 0.80 ng/ml



#36 AR-1262-1

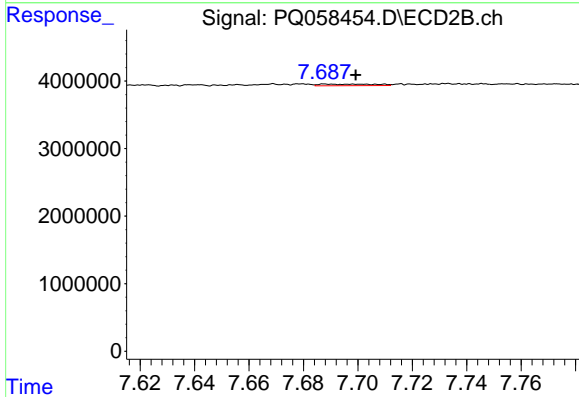
R.T.: 7.160 min
 Delta R.T.: -0.002 min
 Response: 454242
 Conc: 1.61 ng/ml



#37 AR-1262-2

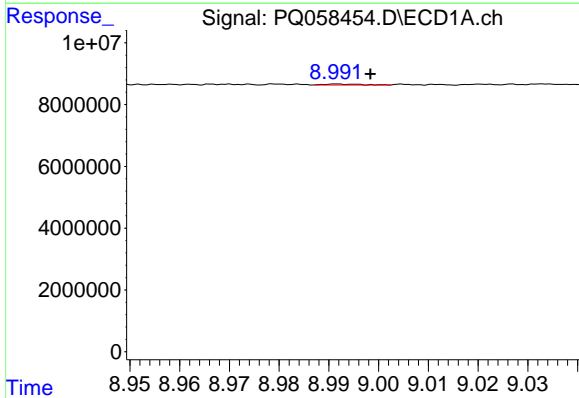
R.T.: 8.667 min
 Delta R.T.: -0.005 min
 Response: 667516
 Conc: 0.61 ng/ml

Instrument :
 ECD_Q
 ClientSampleId :



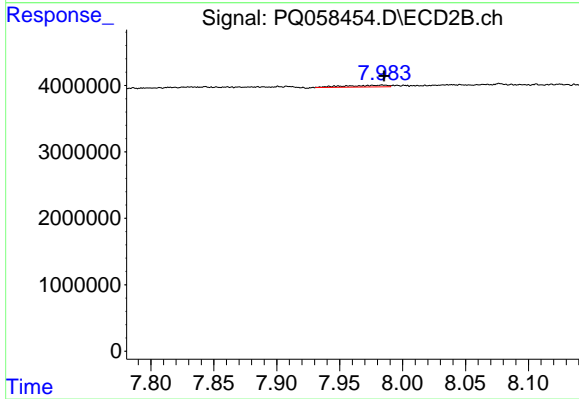
#37 AR-1262-2

R.T.: 7.688 min
 Delta R.T.: -0.011 min
 Response: 339075
 Conc: 0.33 ng/ml



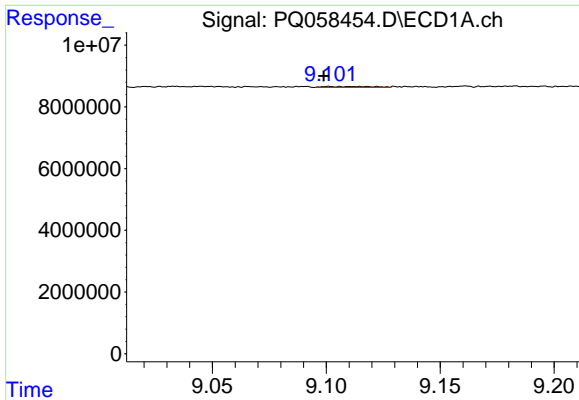
#38 AR-1262-3

R.T.: 8.992 min
 Delta R.T.: -0.006 min
 Response: 161853
 Conc: 0.30 ng/ml



#38 AR-1262-3

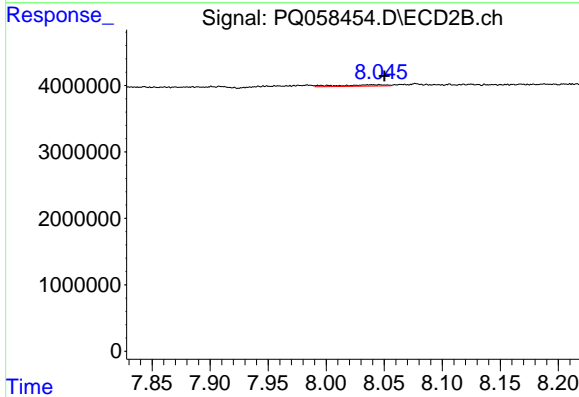
R.T.: 7.984 min
 Delta R.T.: -0.001 min
 Response: 610805
 Conc: 1.57 ng/ml



#39 AR-1262-4

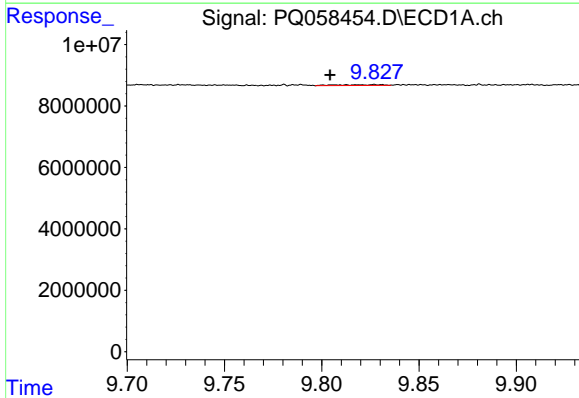
R.T.: 9.101 min
 Delta R.T.: 0.002 min
 Response: 454661
 Conc: 1.09 ng/ml

Instrument :
 ECD_Q
 ClientSampleId :



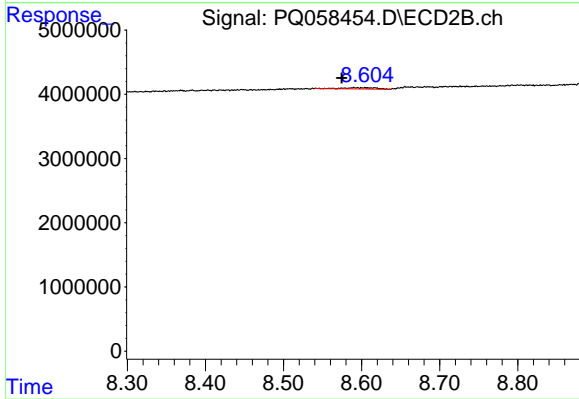
#39 AR-1262-4

R.T.: 8.046 min
 Delta R.T.: -0.004 min
 Response: 591099
 Conc: 0.80 ng/ml



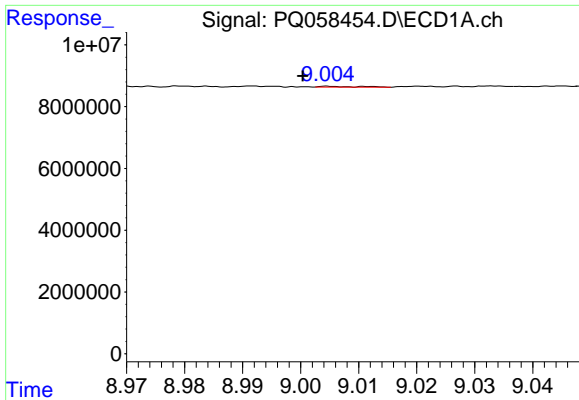
#40 AR-1262-5

R.T.: 9.806 min
 Delta R.T.: 0.002 min
 Response: 393907
 Conc: 0.84 ng/ml



#40 AR-1262-5

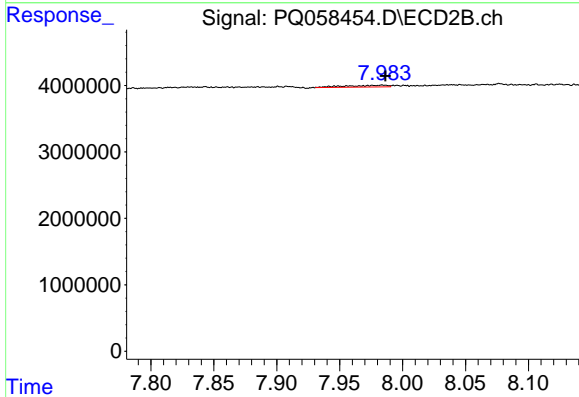
R.T.: 8.590 min
 Delta R.T.: 0.016 min
 Response: 532895
 Conc: 1.64 ng/ml



#41 AR-1268-1

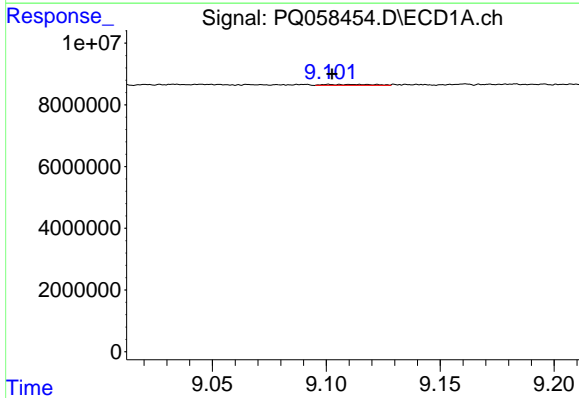
R.T.: 9.005 min
 Delta R.T.: 0.005 min
 Response: 125085
 Conc: 0.10 ng/ml

Instrument :
 ECD_Q
 ClientSampleId :



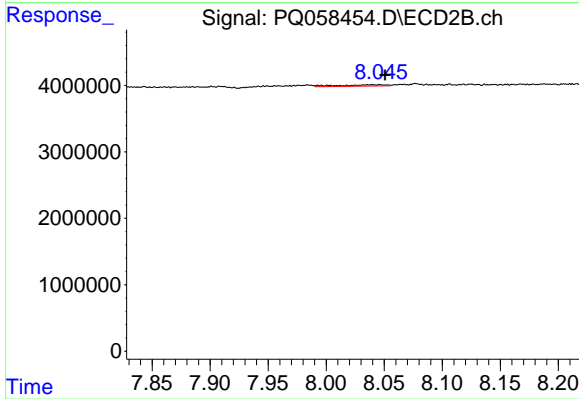
#41 AR-1268-1

R.T.: 7.984 min
 Delta R.T.: -0.002 min
 Response: 610805
 Conc: 0.57 ng/ml



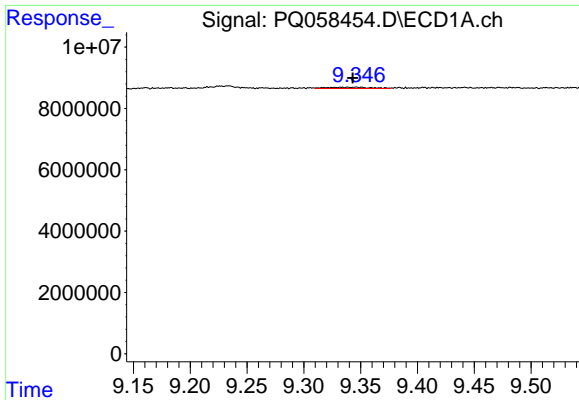
#42 AR-1268-2

R.T.: 9.101 min
 Delta R.T.: -0.002 min
 Response: 454661
 Conc: 0.33 ng/ml



#42 AR-1268-2

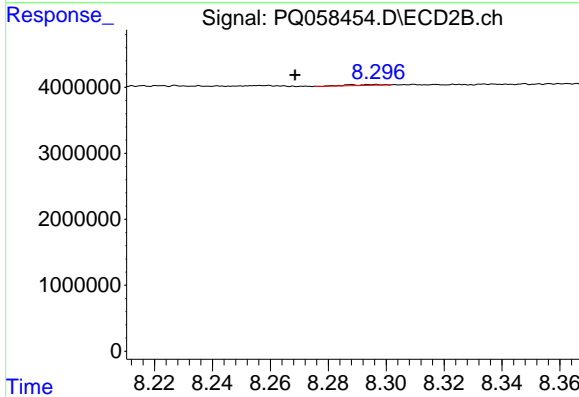
R.T.: 8.046 min
 Delta R.T.: -0.005 min
 Response: 591099
 Conc: 0.60 ng/ml



#43 AR-1268-3

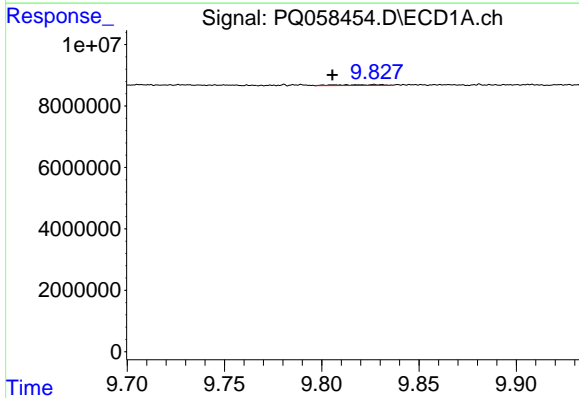
R.T.: 9.346 min
 Delta R.T.: 0.003 min
 Response: 1203521
 Conc: 0.97 ng/ml

Instrument :
 ECD_Q
 ClientSampleId :



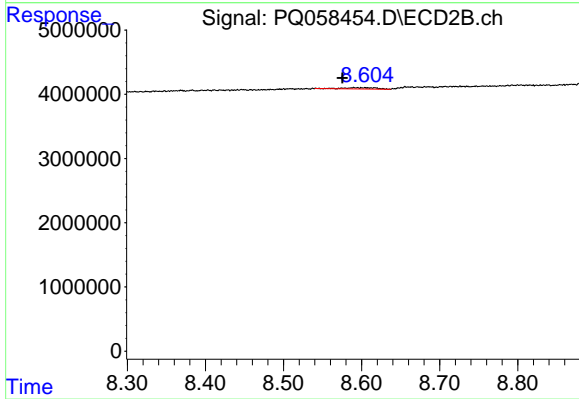
#43 AR-1268-3

R.T.: 8.288 min
 Delta R.T.: 0.020 min
 Response: 100935
 Conc: 0.12 ng/ml



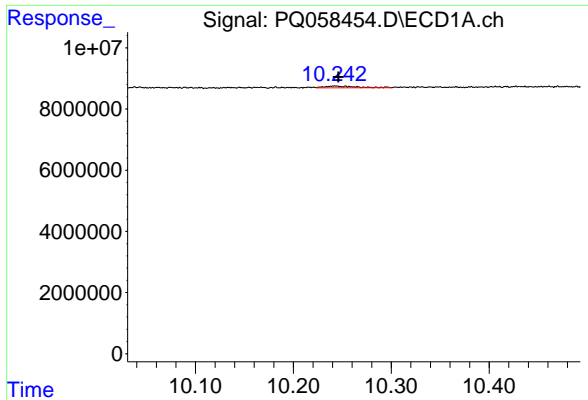
#44 AR-1268-4

R.T.: 9.806 min
 Delta R.T.: 0.000 min
 Response: 393907
 Conc: 0.82 ng/ml



#44 AR-1268-4

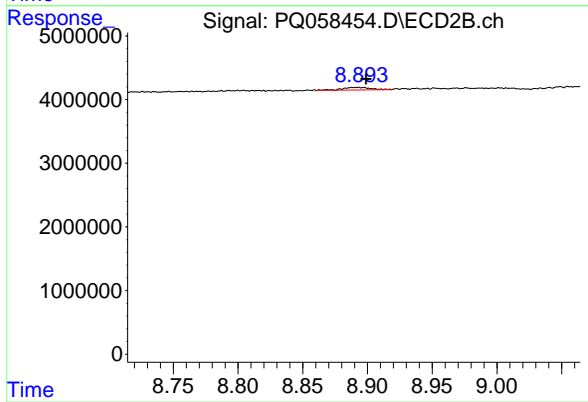
R.T.: 8.590 min
 Delta R.T.: 0.015 min
 Response: 532895
 Conc: 1.62 ng/ml



#45 AR-1268-5

R.T.: 10.242 min
Delta R.T.: -0.003 min
Response: 1323033
Conc: 0.34 ng/ml

Instrument :
ECD_Q
ClientSampleId :



#45 AR-1268-5

R.T.: 8.892 min
Delta R.T.: -0.007 min
Response: 601485
Conc: 0.22 ng/ml