

Data Path : Z:\pestpcbsrv\HPCHEM1\ECD_Q\Data\PQ062923\
 Data File : PQ061779.D
 Signal(s) : Signal #1: ECD1A.ch Signal #2: ECD2B.ch
 Acq On : 30 Jun 2023 02:04
 Operator : YP\AJ
 Sample : I.BLK
 Misc :
 ALS Vial : 2 Sample Multiplier: 1

Instrument :
 ECD_Q
 ClientSampleId :
 I.BLK

Integration File signal 1: autoint1.e
 Integration File signal 2: autoint2.e
 Quant Time: Jun 30 05:28:04 2023
 Quant Method : Z:\pestpcbsrv\HPCHEM1\ECD_Q\Method\PQ060923.M
 Quant Title : GC EXTRACTABLES
 QLast Update : Fri Jun 09 18:19:31 2023
 Response via : Initial Calibration
 Integrator: ChemStation

Volume Inj. : 2 µl
 Signal #1 Phase : ZB-MR1 Signal #2 Phase: ZB-MR2
 Signal #1 Info : 30Mx0.32mmx 0.50µ Signal #2 Info : 30M x 0.32mm x 0.25µm

Compound	RT#1	RT#2	Resp#1	Resp#2	ng/ml	ng/ml

System Monitoring Compounds						
1) SA Tetrachlo...	3.405	2.760	95310076	52569658	21.203	19.686
2) SA Decachlor...	8.583	7.529	74554019	70170286	22.132	20.906

Target Compounds

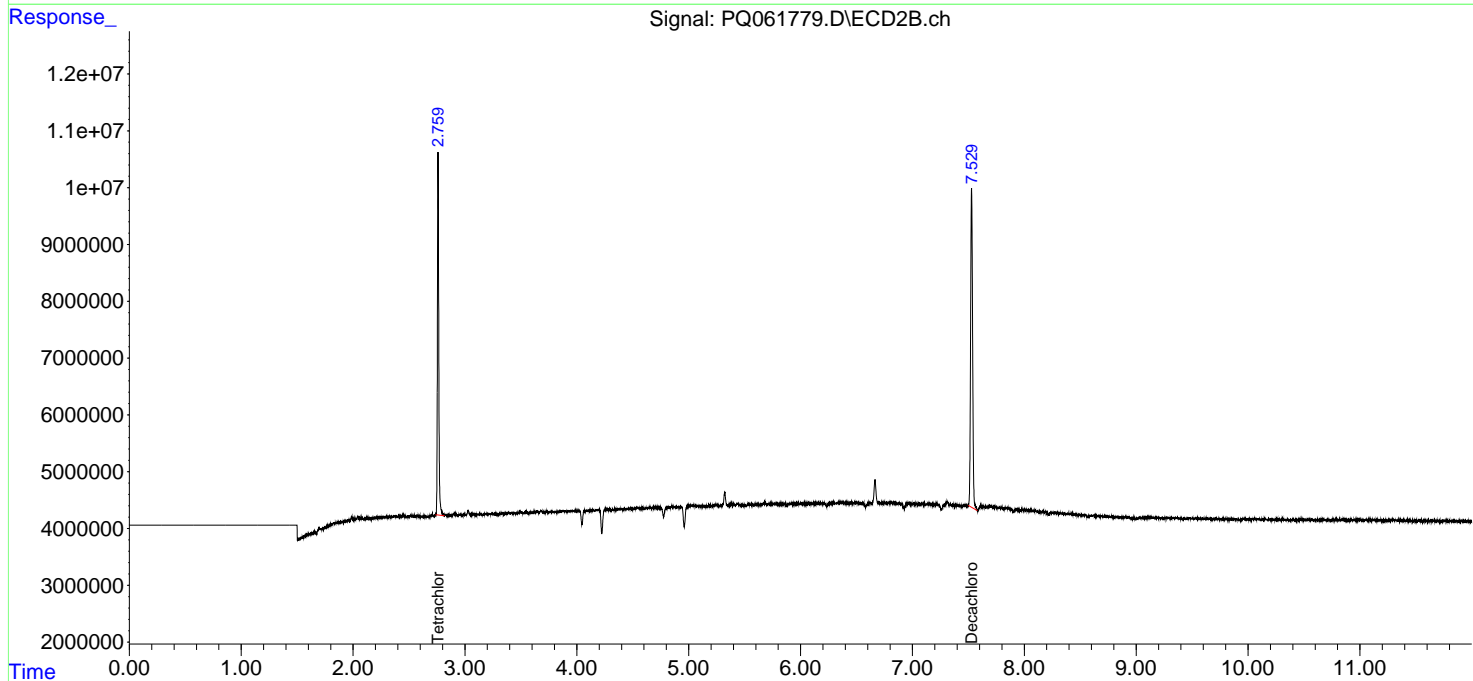
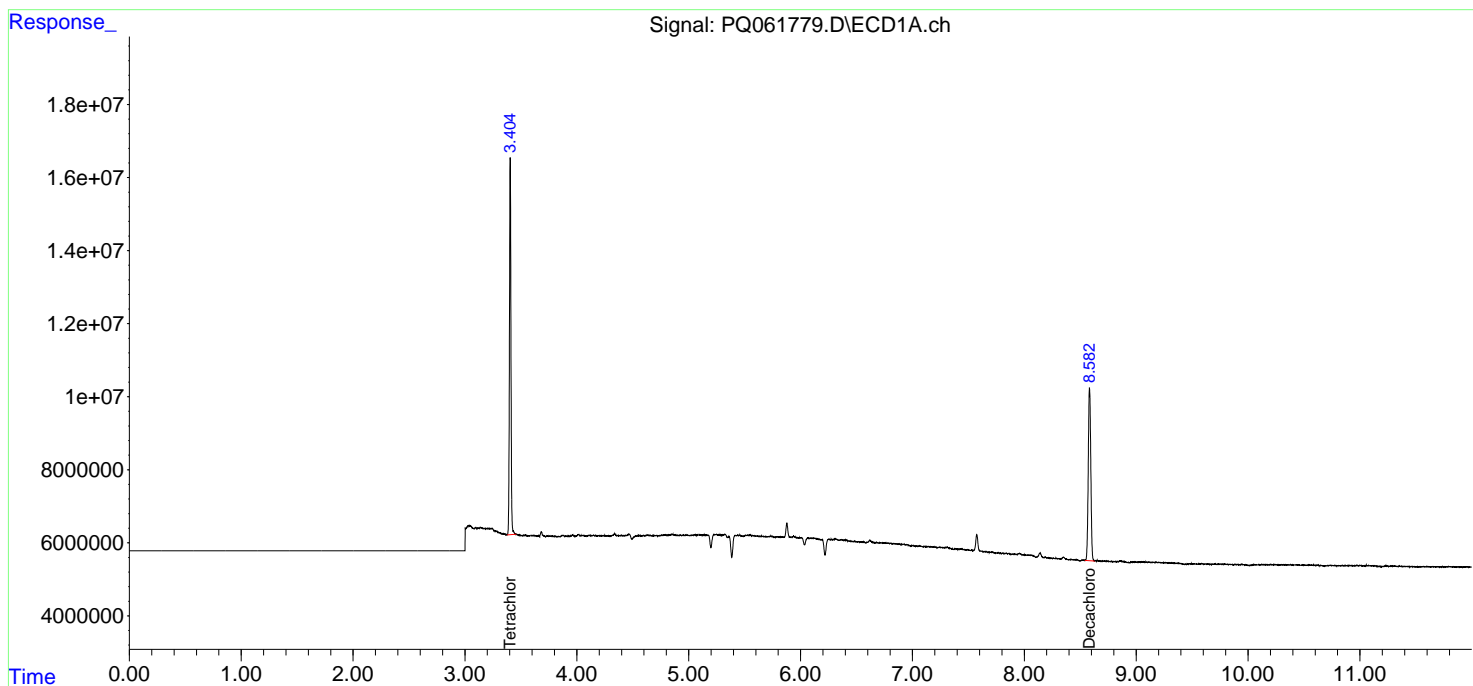
(f)=RT Delta > 1/2 Window (#)=Amounts differ by > 25% (m)=manual int.

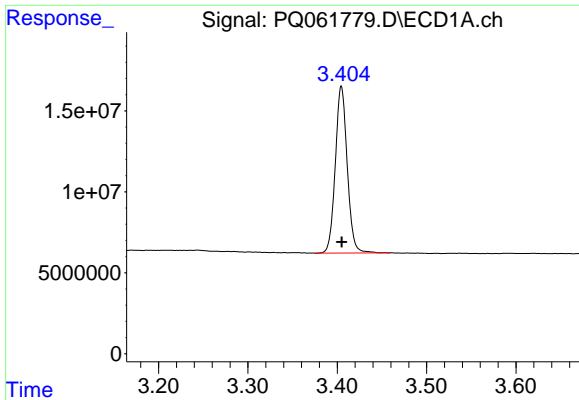
Data Path : Z:\pestpcbsrv\HPCHEM1\ECD_Q\Data\PQ062923\
 Data File : PQ061779.D
 Signal(s) : Signal #1: ECD1A.ch Signal #2: ECD2B.ch
 Acq On : 30 Jun 2023 02:04
 Operator : YP\AJ
 Sample : I.BLK
 Misc :
 ALS Vial : 2 Sample Multiplier: 1

Instrument :
 ECD_Q
 ClientSampleId :
 I.BLK

Integration File signal 1: autoint1.e
 Integration File signal 2: autoint2.e
 Quant Time: Jun 30 05:28:04 2023
 Quant Method : Z:\pestpcbsrv\HPCHEM1\ECD_Q\Method\PQ060923.M
 Quant Title : GC EXTRACTABLES
 QLast Update : Fri Jun 09 18:19:31 2023
 Response via : Initial Calibration
 Integrator: ChemStation

Volume Inj. : 2 µl
 Signal #1 Phase : ZB-MR1 Signal #2 Phase: ZB-MR2
 Signal #1 Info : 30Mx0.32mmx 0.50µ Signal #2 Info : 30M x 0.32mm x 0.25µm

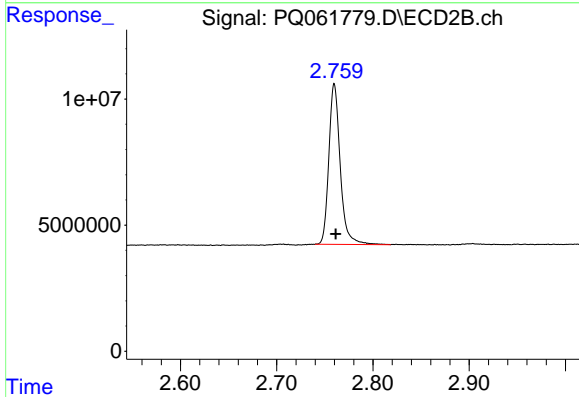




#1 Tetrachloro-m-xylene

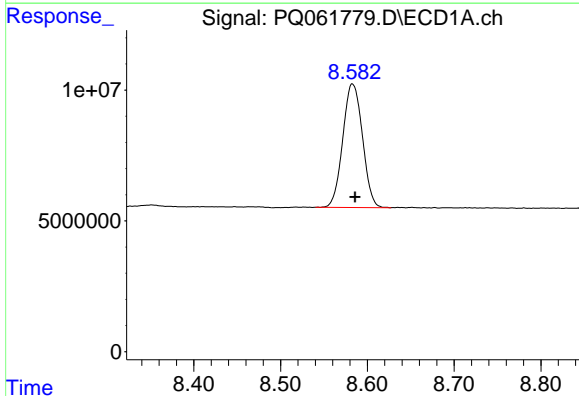
R.T.: 3.405 min
 Delta R.T.: 0.000 min
 Response: 95310076
 Conc: 21.20 ng/ml

Instrument :
 ECD_Q
 ClientSampleId :
 I.BLK



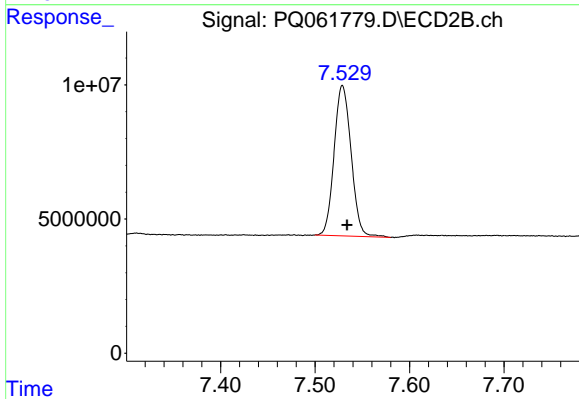
#1 Tetrachloro-m-xylene

R.T.: 2.760 min
 Delta R.T.: -0.001 min
 Response: 52569658
 Conc: 19.69 ng/ml



#2 Decachlorobiphenyl

R.T.: 8.583 min
 Delta R.T.: -0.003 min
 Response: 74554019
 Conc: 22.13 ng/ml



#2 Decachlorobiphenyl

R.T.: 7.529 min
 Delta R.T.: -0.005 min
 Response: 70170286
 Conc: 20.91 ng/ml