

Data Path : Z:\pestpcbsrv\HPCHEM1\ECD\_Q\Data\PQ063020\  
 Data File : PQ048574.D  
 Signal(s) : Signal #1: ECD1A.ch Signal #2: ECD2B.ch  
 Acq On : 30 Jun 2020 19:29  
 Operator : DD\AJ  
 Sample : L3148-05RE  
 Misc :  
 ALS Vial : 16 Sample Multiplier: 1

**Instrument :**  
 ECD\_Q  
**ClientSampleId :**  
 EPEC-POLYMERS-05RE

**Manual Integrations**  
**APPROVED**  
 Ankita  
 7/1/2020 12:13:46 PM

Integration File signal 1: autoint1.e  
 Integration File signal 2: autoint2.e  
 Quant Time: Jul 01 07:46:27 2020  
 Quant Method : Z:\pestpcbsrv\HPCHEM1\ECD\_Q\Method\PQ061720.M  
 Quant Title : GC EXTRACTABLES  
 QLast Update : Wed Jun 17 15:37:20 2020  
 Response via : Initial Calibration  
 Integrator: ChemStation

Volume Inj. : 2 µl  
 Signal #1 Phase : ZB-MR1 Signal #2 Phase: ZB-MR2  
 Signal #1 Info : 30Mx0.32mmx 0.50µ Signal #2 Info : 30M x 0.32mm x 0.25µm

Compound	RT#1	RT#2	Resp#1	Resp#2	ng/ml	ng/ml
-----						
System Monitoring Compounds						
1) SA Tetrachlo...	5.256	4.282	42298.5E6	41604.7E6	5738.284m	11784.136m#
2) SA Decachlor...	11.553	9.665	3237.2E6	7913.1E6	334.562	1644.365 #

Target Compounds

(f)=RT Delta > 1/2 Window (#)=Amounts differ by > 25% (m)=manual int.

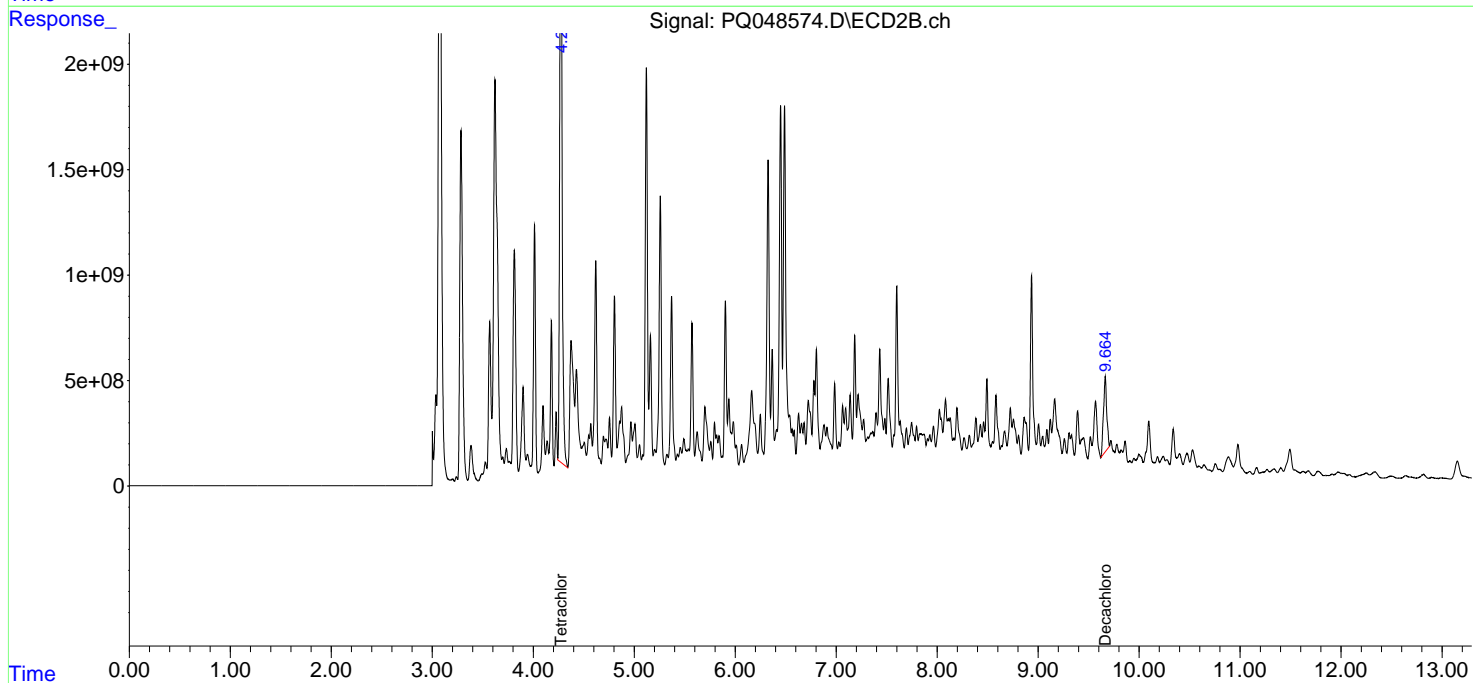
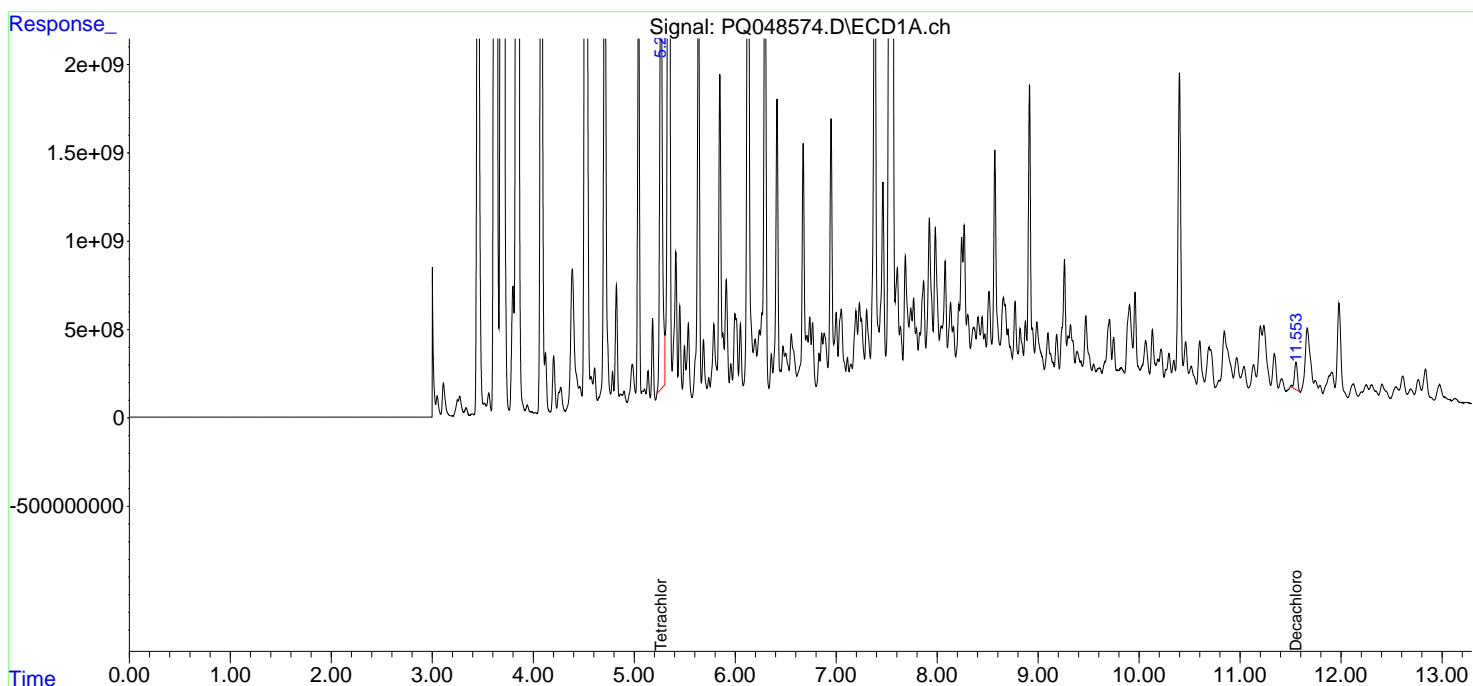
Data Path : Z:\pestpcbsrv\HPCHEM1\ECD\_Q\Data\PQ063020\  
 Data File : PQ048574.D  
 Signal(s) : Signal #1: ECD1A.ch Signal #2: ECD2B.ch  
 Acq On : 30 Jun 2020 19:29  
 Operator : DD\AJ  
 Sample : L3148-05RE  
 Misc :  
 ALS Vial : 16 Sample Multiplier: 1

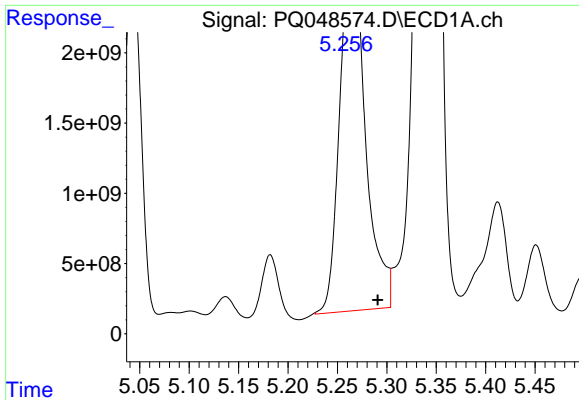
**Instrument :**  
 ECD\_Q  
**Client Sampled :**  
 EPEC-POLYMERS-05RE

**Manual Integrations**  
**APPROVED**  
 Ankita  
 7/1/2020 12:13:46 PM

Integration File signal 1: autoint1.e  
 Integration File signal 2: autoint2.e  
 Quant Time: Jul 01 07:46:27 2020  
 Quant Method : Z:\pestpcbsrv\HPCHEM1\ECD\_Q\Method\PQ061720.M  
 Quant Title : GC EXTRACTABLES  
 QLast Update : Wed Jun 17 15:37:20 2020  
 Response via : Initial Calibration  
 Integrator: ChemStation

Volume Inj. : 2 µl  
 Signal #1 Phase : ZB-MR1 Signal #2 Phase: ZB-MR2  
 Signal #1 Info : 30Mx0.32mmx 0.50µ Signal #2 Info : 30M x 0.32mm x 0.25µm

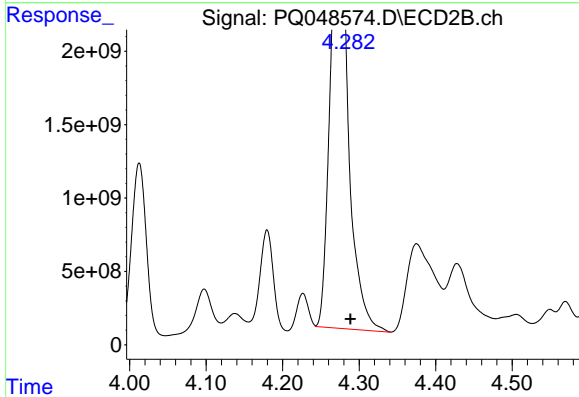




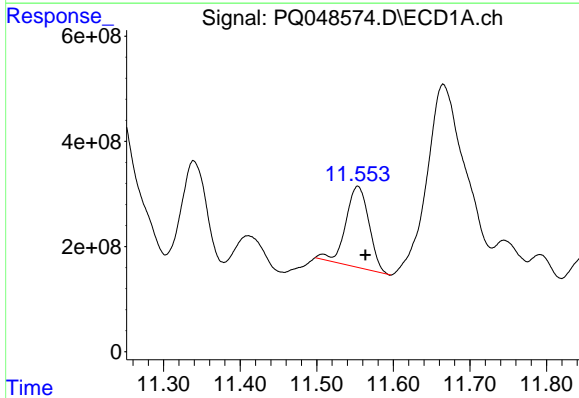
#1 Tetrachloro-m-xylene  
 R.T.: 5.256 min  
 Delta R.T.: -0.035 min  
 Response: 42298462424  
 Conc: 5738.28 ng/ml m

**Instrument :**  
 ECD\_Q  
**ClientSampled :**  
 EPEC-POLYMERS-05RE

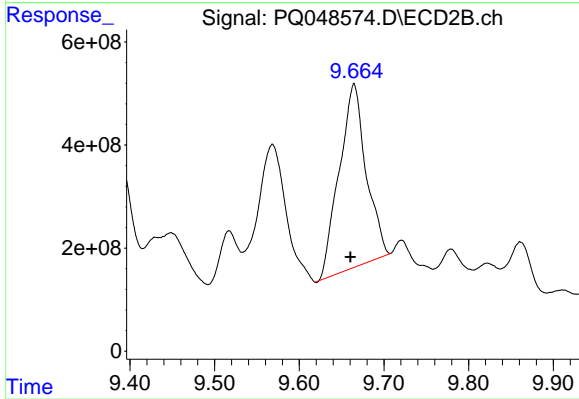
**Manual Integrations**  
**APPROVED**  
 Ankita  
 7/1/2020 12:13:46 PM



#1 Tetrachloro-m-xylene  
 R.T.: 4.282 min  
 Delta R.T.: -0.006 min  
 Response: 41604709123  
 Conc: 11784.14 ng/ml m



#2 Decachlorobiphenyl  
 R.T.: 11.553 min  
 Delta R.T.: -0.010 min  
 Response: 3237221224  
 Conc: 334.56 ng/ml



#2 Decachlorobiphenyl  
 R.T.: 9.665 min  
 Delta R.T.: 0.004 min  
 Response: 7913124520  
 Conc: 1644.37 ng/ml