

Data Path : Z:\pestpcbsrv\HPCHEM1\ECD_Q\Data\PQ063022\
 Data File : PQ058476.D
 Signal(s) : Signal #1: ECD1A.ch Signal #2: ECD2B.ch
 Acq On : 30 Jun 2022 12:52
 Operator : YP\AJ
 Sample : N3214-02
 Misc : AR1242 LOQ 50 PPB
 ALS Vial : 15 Sample Multiplier: 1

Instrument :
 ECD_Q
ClientSampleId :
 LOQ-SOIL-02-QT2-2022

Integration File signal 1: autoint1.e
 Integration File signal 2: autoint2.e
 Quant Time: Jun 30 13:20:17 2022
 Quant Method : Z:\pestpcbsrv\HPCHEM1\ECD_Q\Method\PQ062922.M
 Quant Title : GC EXTRACTABLES
 QLast Update : Wed Jun 29 16:14:42 2022
 Response via : Initial Calibration
 Integrator: ChemStation

Volume Inj. : 2 µl
 Signal #1 Phase : ZB-MR1 Signal #2 Phase: ZB-MR2
 Signal #1 Info : 30Mx0.32mmx 0.50µ Signal #2 Info : 30M x 0.32mm x 0.25µm

Compound	RT#1	RT#2	Resp#1	Resp#2	ng/ml	ng/ml

System Monitoring Compounds						
1) SA Tetrachlo...	4.685	4.045	239.3E6	198.1E6	18.694	18.282
2) SA Decachlor...	10.601	9.177	233.9E6	141.4E6	19.442	18.860
Target Compounds						
16) L4 AR-1242-1	5.870	5.148	11190083	10909853	52.804	48.129
17) L4 AR-1242-2	5.893	5.167	19433843	15267638	53.382	47.929
18) L4 AR-1242-3	5.955	5.347	13516869	8214945	56.922	50.776
19) L4 AR-1242-4	6.056	5.429	10581081	8218685	53.540	51.588
20) L4 AR-1242-5	6.794	5.956	9824518	8432469	57.486	45.064

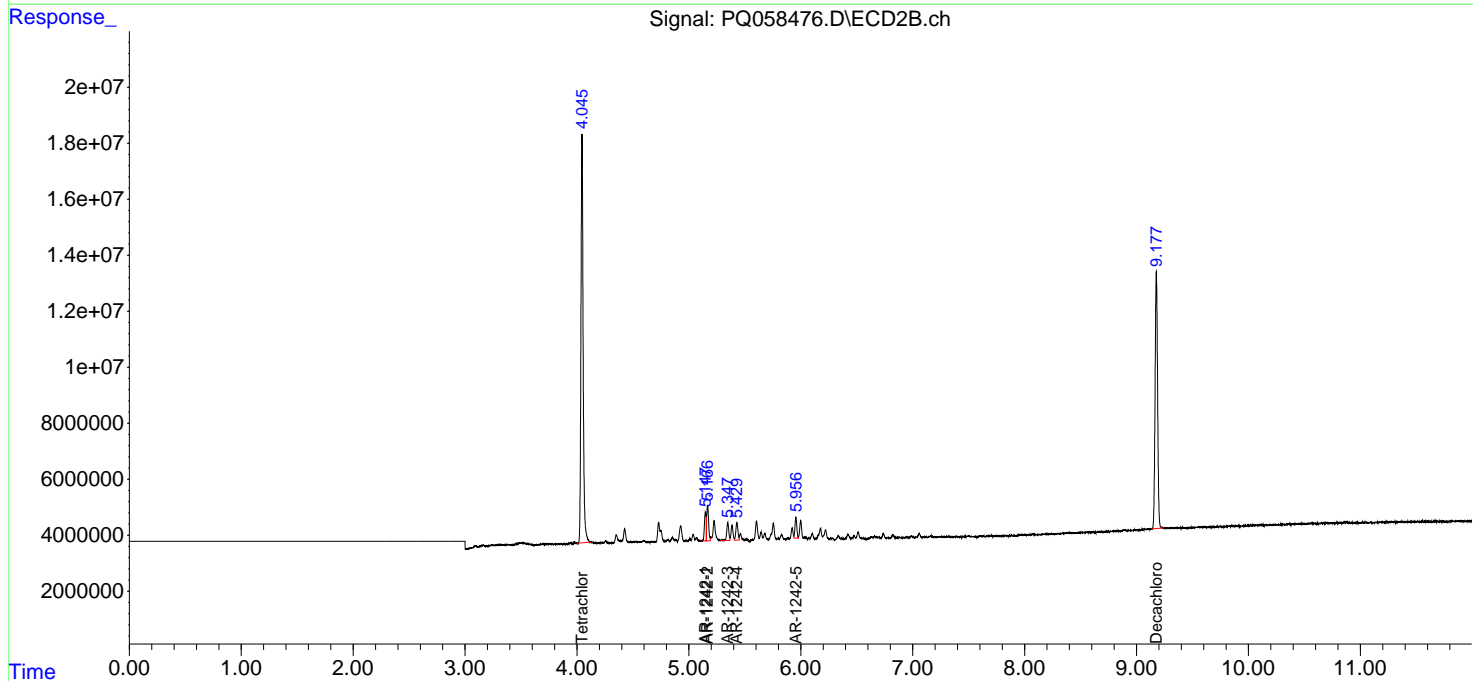
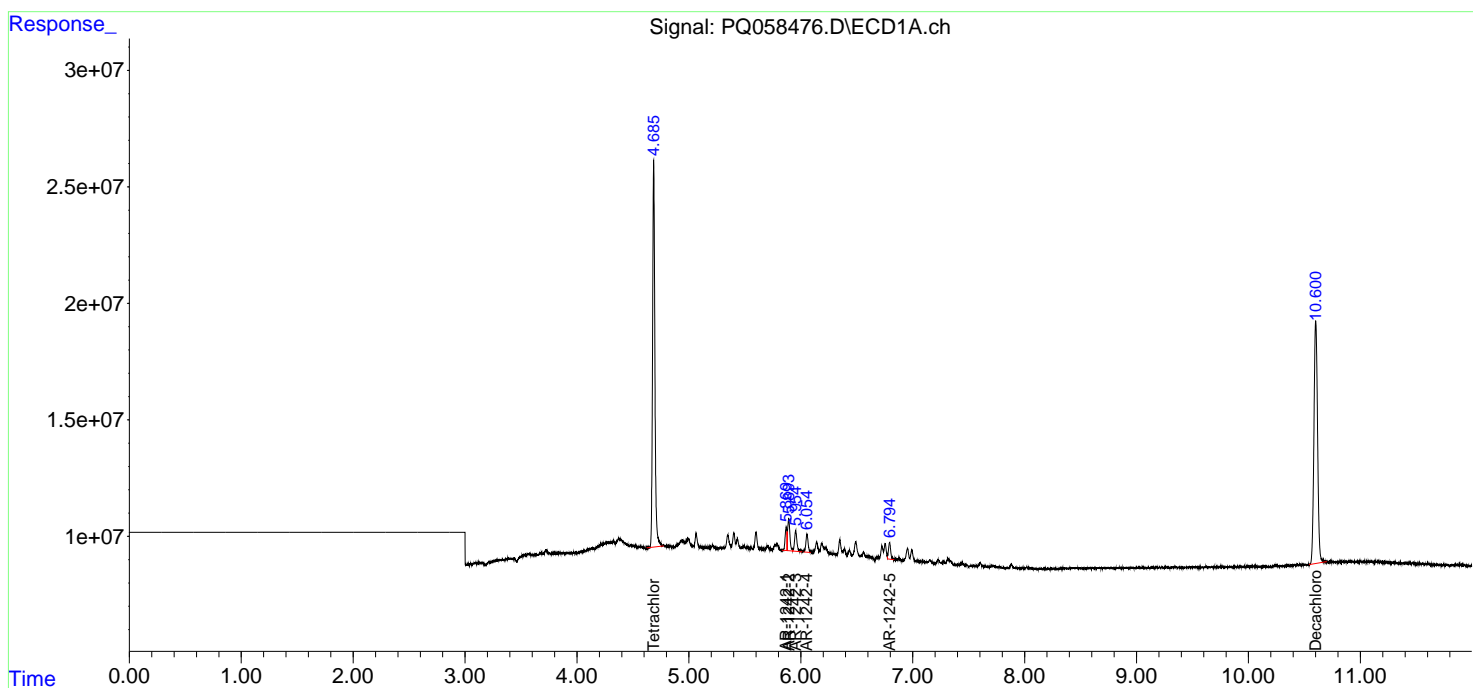
(f)=RT Delta > 1/2 Window (#)=Amounts differ by > 25% (m)=manual int.

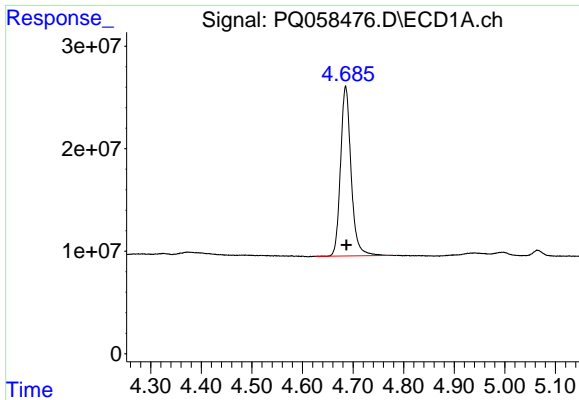
Data Path : Z:\pestpcbsrv\HPCHEM1\ECD_Q\Data\PQ063022\
 Data File : PQ058476.D
 Signal(s) : Signal #1: ECD1A.ch Signal #2: ECD2B.ch
 Acq On : 30 Jun 2022 12:52
 Operator : YP\AJ
 Sample : N3214-02
 Misc : AR1242 LOQ 50 PPB
 ALS Vial : 15 Sample Multiplier: 1

Instrument :
 ECD_Q
ClientSampleId :
 LOQ-SOIL-02-QT2-2022

Integration File signal 1: autoint1.e
 Integration File signal 2: autoint2.e
 Quant Time: Jun 30 13:20:17 2022
 Quant Method : Z:\pestpcbsrv\HPCHEM1\ECD_Q\Method\PQ062922.M
 Quant Title : GC EXTRACTABLES
 QLast Update : Wed Jun 29 16:14:42 2022
 Response via : Initial Calibration
 Integrator: ChemStation

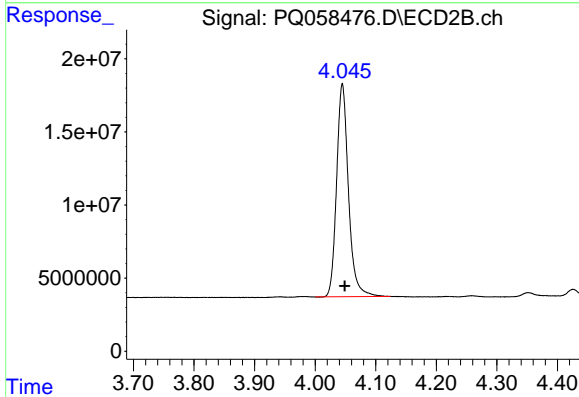
Volume Inj. : 2 µl
 Signal #1 Phase : ZB-MR1 Signal #2 Phase: ZB-MR2
 Signal #1 Info : 30Mx0.32mmx 0.50µm Signal #2 Info : 30M x 0.32mm x 0.25µm



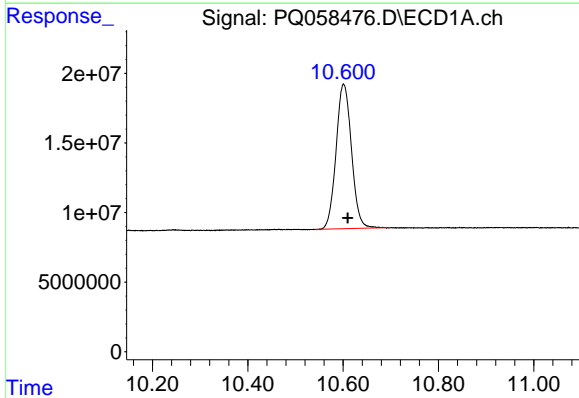


#1 Tetrachloro-m-xylene
 R.T.: 4.685 min
 Delta R.T.: -0.002 min
 Response: 239312793
 Conc: 18.69 ng/ml

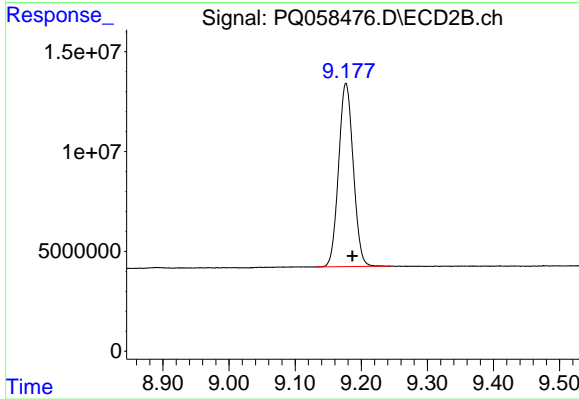
Instrument :
 ECD_Q
 ClientSampleId :
 LOQ-SOIL-02-QT2-2022



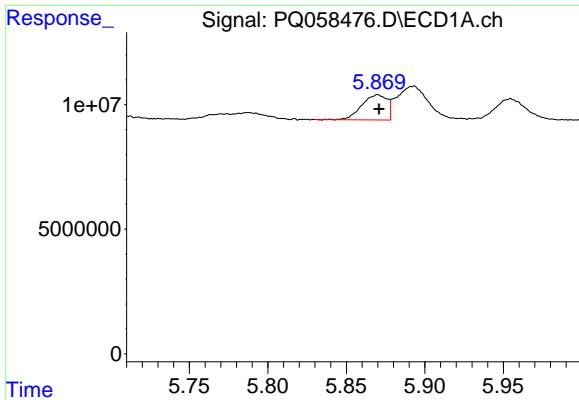
#1 Tetrachloro-m-xylene
 R.T.: 4.045 min
 Delta R.T.: -0.004 min
 Response: 198145712
 Conc: 18.28 ng/ml



#2 Decachlorobiphenyl
 R.T.: 10.601 min
 Delta R.T.: -0.009 min
 Response: 233928532
 Conc: 19.44 ng/ml



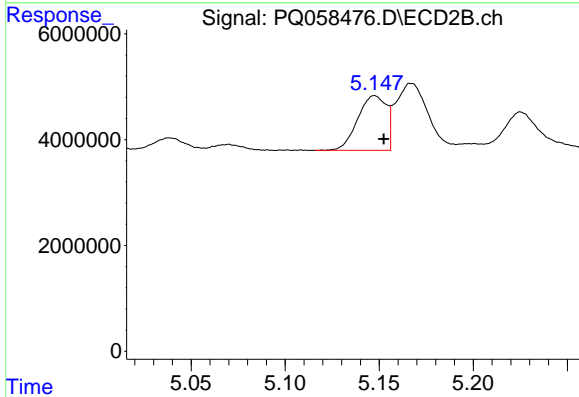
#2 Decachlorobiphenyl
 R.T.: 9.177 min
 Delta R.T.: -0.010 min
 Response: 141427266
 Conc: 18.86 ng/ml



#16 AR-1242-1

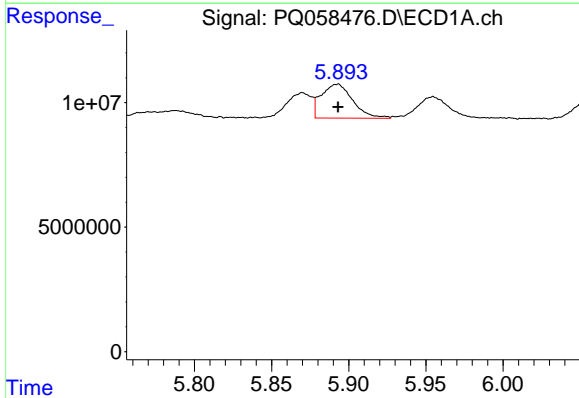
R.T.: 5.870 min
 Delta R.T.: 0.000 min
 Response: 11190083
 Conc: 52.80 ng/ml

Instrument :
 ECD_Q
 ClientSampleId :
 LOQ-SOIL-02-QT2-2022



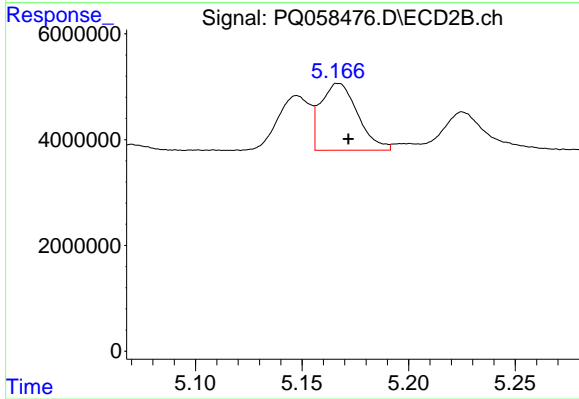
#16 AR-1242-1

R.T.: 5.148 min
 Delta R.T.: -0.005 min
 Response: 10909853
 Conc: 48.13 ng/ml



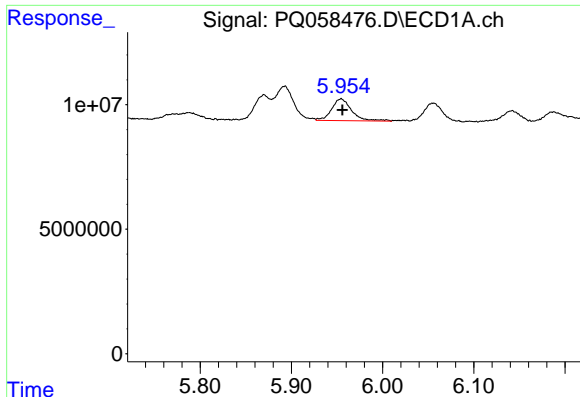
#17 AR-1242-2

R.T.: 5.893 min
 Delta R.T.: 0.000 min
 Response: 19433843
 Conc: 53.38 ng/ml



#17 AR-1242-2

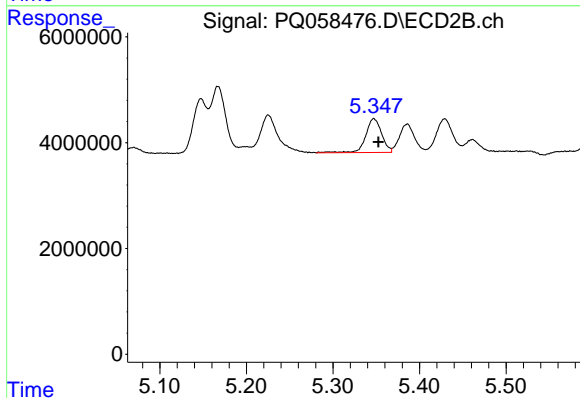
R.T.: 5.167 min
 Delta R.T.: -0.005 min
 Response: 15267638
 Conc: 47.93 ng/ml



#18 AR-1242-3

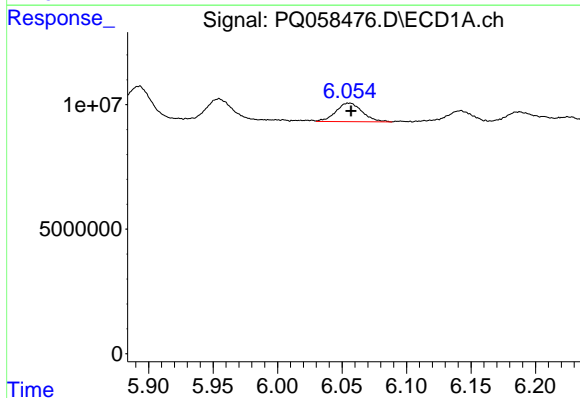
R.T.: 5.955 min
 Delta R.T.: -0.001 min
 Response: 13516869
 Conc: 56.92 ng/ml

Instrument :
 ECD_Q
 ClientSampleId :
 LOQ-SOIL-02-QT2-2022



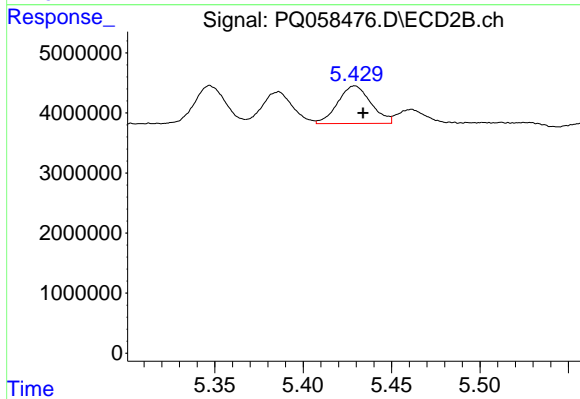
#18 AR-1242-3

R.T.: 5.347 min
 Delta R.T.: -0.005 min
 Response: 8214945
 Conc: 50.78 ng/ml



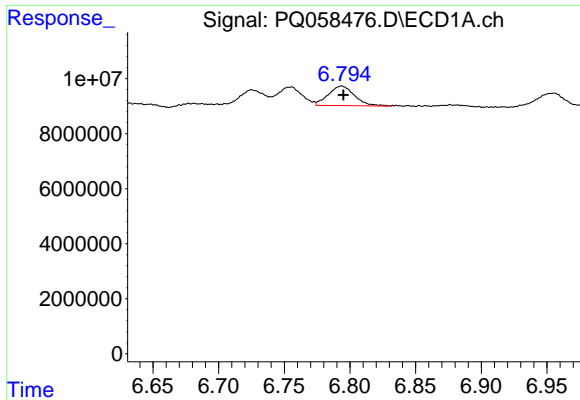
#19 AR-1242-4

R.T.: 6.056 min
 Delta R.T.: -0.001 min
 Response: 10581081
 Conc: 53.54 ng/ml



#19 AR-1242-4

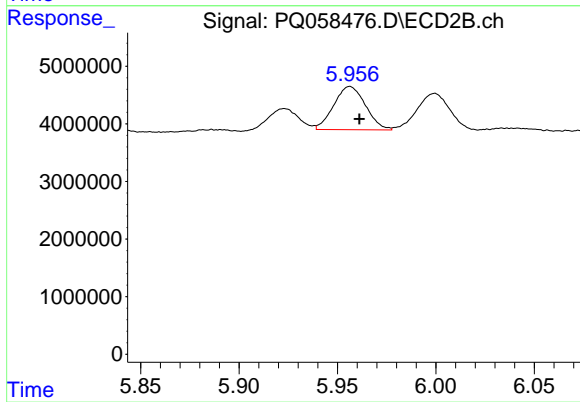
R.T.: 5.429 min
 Delta R.T.: -0.005 min
 Response: 8218685
 Conc: 51.59 ng/ml



#20 AR-1242-5

R.T.: 6.794 min
 Delta R.T.: -0.001 min
 Response: 9824518
 Conc: 57.49 ng/ml

Instrument :
 ECD_Q
 ClientSampleId :
 LOQ-SOIL-02-QT2-2022



#20 AR-1242-5

R.T.: 5.956 min
 Delta R.T.: -0.005 min
 Response: 8432469
 Conc: 45.06 ng/ml