

Data Path : Z:\pestpcbsrv\HPCHEM1\ECD_Q\Data\PQ063022\
 Data File : PQ058477.D
 Signal(s) : Signal #1: ECD1A.ch Signal #2: ECD2B.ch
 Acq On : 30 Jun 2022 13:07
 Operator : YP\AJ
 Sample : N3214-02
 Misc : AR1248 LOQ 50 PPB
 ALS Vial : 16 Sample Multiplier: 1

Instrument :
 ECD_Q
ClientSampleId :
 LOQ-SOIL-02-QT2-2022

Integration File signal 1: autoint1.e
 Integration File signal 2: autoint2.e
 Quant Time: Jun 30 13:20:51 2022
 Quant Method : Z:\pestpcbsrv\HPCHEM1\ECD_Q\Method\PQ062922.M
 Quant Title : GC EXTRACTABLES
 QLast Update : Wed Jun 29 16:14:42 2022
 Response via : Initial Calibration
 Integrator: ChemStation

Volume Inj. : 2 µl
 Signal #1 Phase : ZB-MR1 Signal #2 Phase: ZB-MR2
 Signal #1 Info : 30Mx0.32mmx 0.50µ Signal #2 Info : 30M x 0.32mm x 0.25µm

Compound	RT#1	RT#2	Resp#1	Resp#2	ng/ml	ng/ml

System Monitoring Compounds						
1) SA Tetrachlo...	4.684	4.045	232.9E6	192.0E6	18.190	17.717
2) SA Decachlor...	10.601	9.177	221.9E6	134.0E6	18.440	17.868
Target Compounds						
21) L5 AR-1248-1	5.869	5.147	9383797	8213139	66.556	55.268
22) L5 AR-1248-2	6.140	5.385	11398119	11270222	60.608	57.804
23) L5 AR-1248-3	6.349	5.429	13749137	11583453	60.689	57.596
24) L5 AR-1248-4	6.754	5.604	15117639	15287535	62.850	62.642
25) L5 AR-1248-5	6.794	5.999	16796035	11793056	66.081	52.820

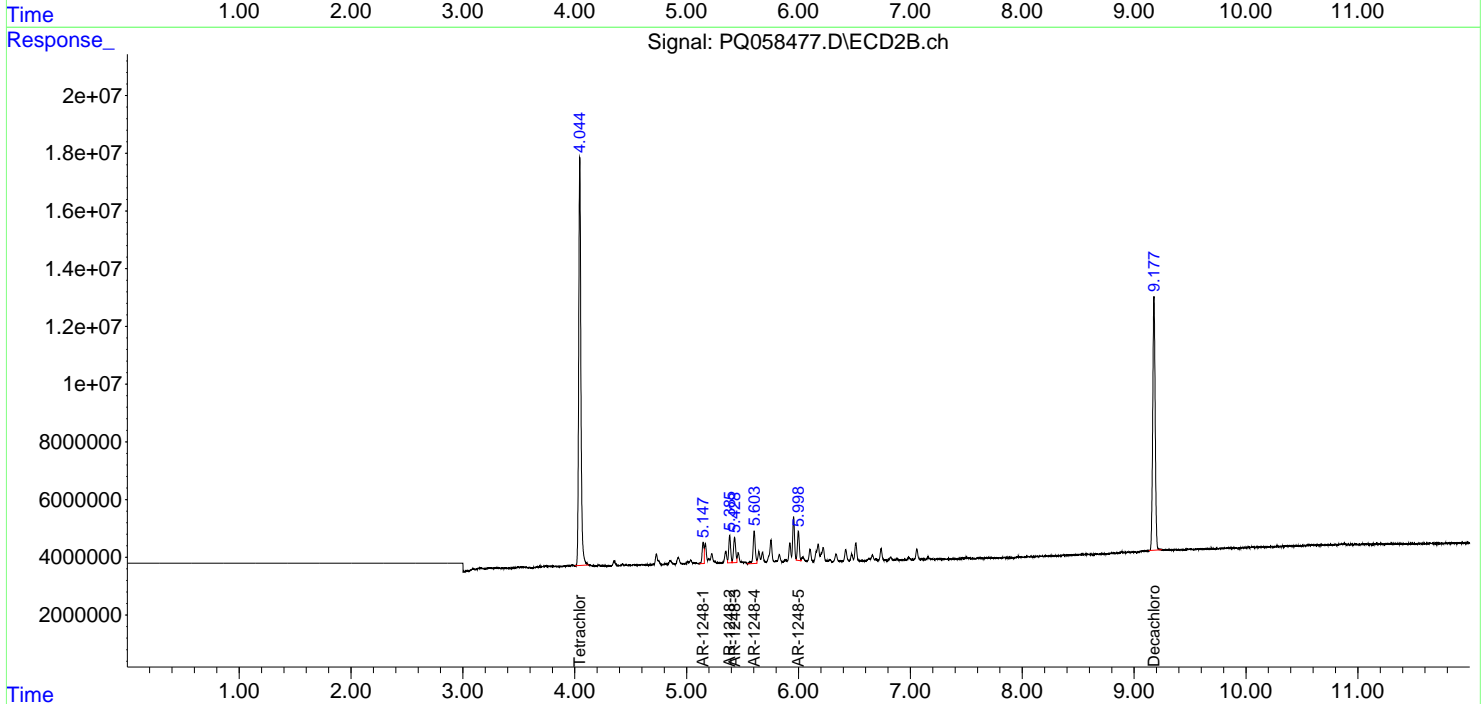
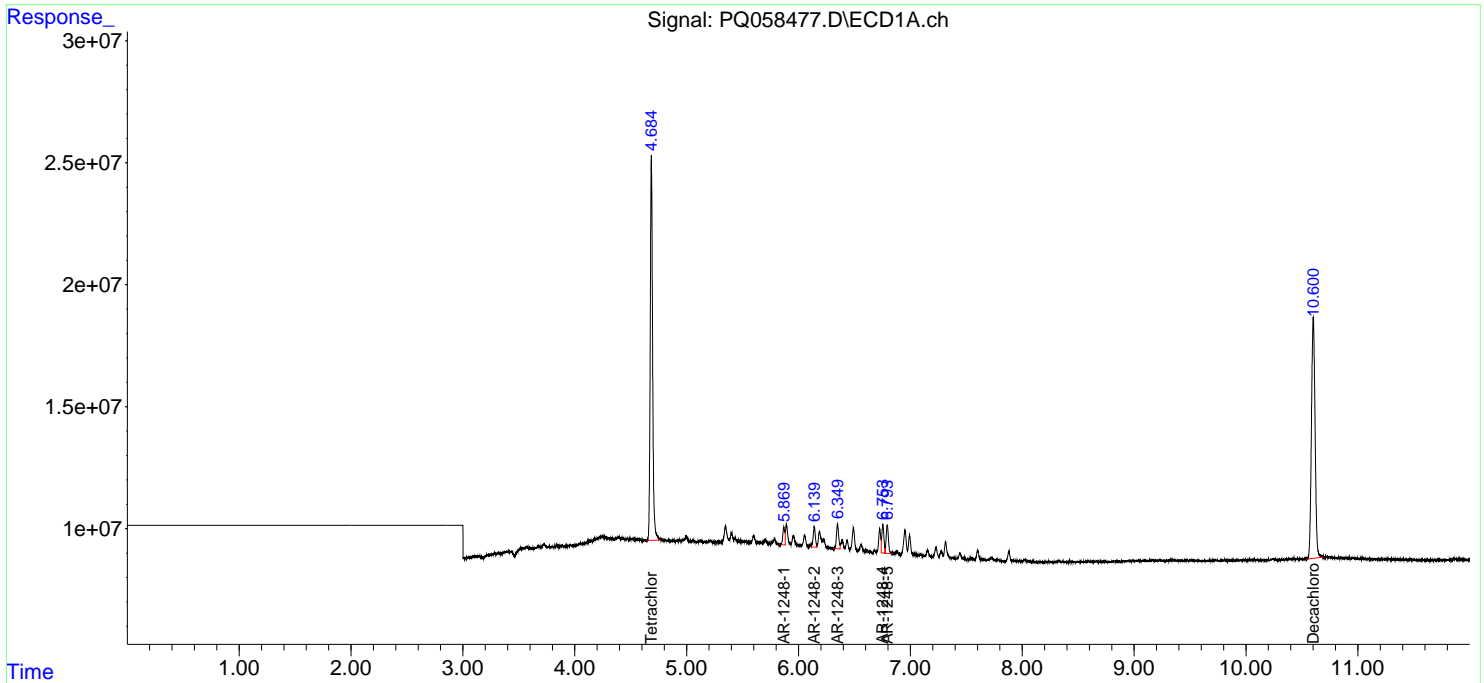
(f)=RT Delta > 1/2 Window (#)=Amounts differ by > 25% (m)=manual int.

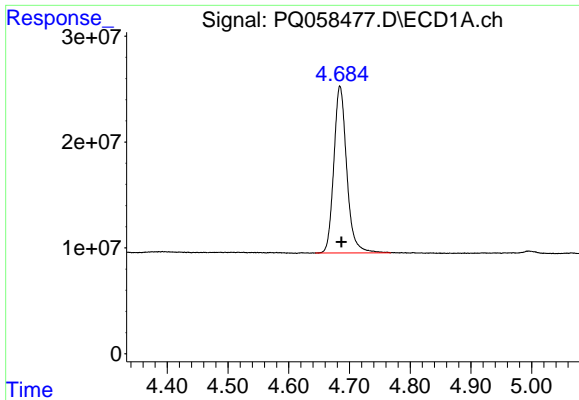
Data Path : Z:\pestpcbsrv\HPCHEM1\ECD_Q\Data\PQ063022\
 Data File : PQ058477.D
 Signal(s) : Signal #1: ECD1A.ch Signal #2: ECD2B.ch
 Acq On : 30 Jun 2022 13:07
 Operator : YP\AJ
 Sample : N3214-02
 Misc : AR1248 LOQ 50 PPB
 ALS Vial : 16 Sample Multiplier: 1

Instrument :
 ECD_Q
ClientSampleId :
 LOQ-SOIL-02-QT2-2022

Integration File signal 1: autoint1.e
 Integration File signal 2: autoint2.e
 Quant Time: Jun 30 13:20:51 2022
 Quant Method : Z:\pestpcbsrv\HPCHEM1\ECD_Q\Method\PQ062922.M
 Quant Title : GC EXTRACTABLES
 QLast Update : Wed Jun 29 16:14:42 2022
 Response via : Initial Calibration
 Integrator: ChemStation

Volume Inj. : 2 µl
 Signal #1 Phase : ZB-MR1 Signal #2 Phase: ZB-MR2
 Signal #1 Info : 30Mx0.32mmx 0.50µ Signal #2 Info : 30M x 0.32mm x 0.25µm

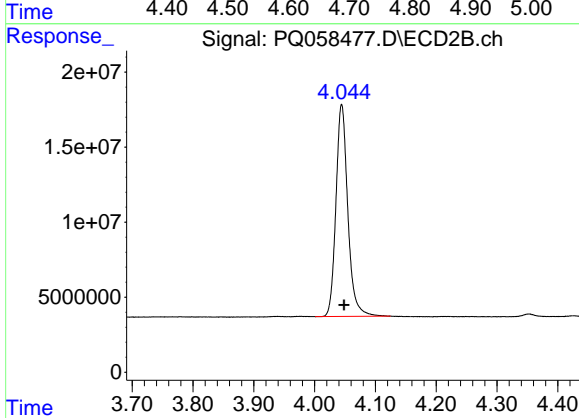




#1 Tetrachloro-m-xylene

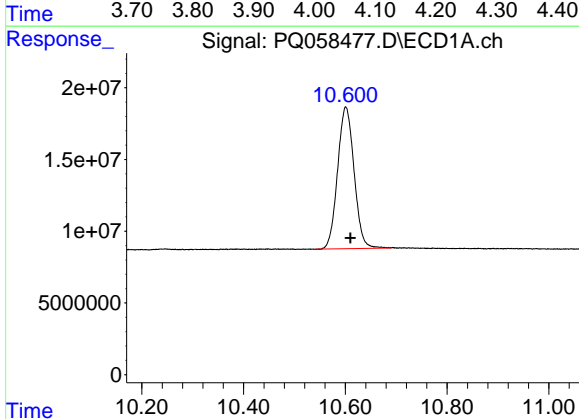
R.T.: 4.684 min
 Delta R.T.: -0.003 min
 Response: 232860752
 Conc: 18.19 ng/ml

Instrument :
 ECD_Q
 ClientSampleId :
 LOQ-SOIL-02-QT2-2022



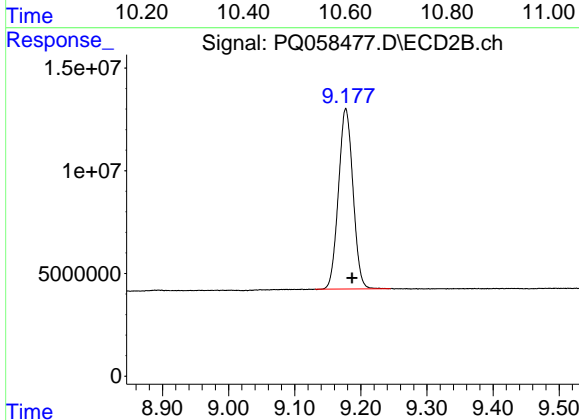
#1 Tetrachloro-m-xylene

R.T.: 4.045 min
 Delta R.T.: -0.004 min
 Response: 192020460
 Conc: 17.72 ng/ml



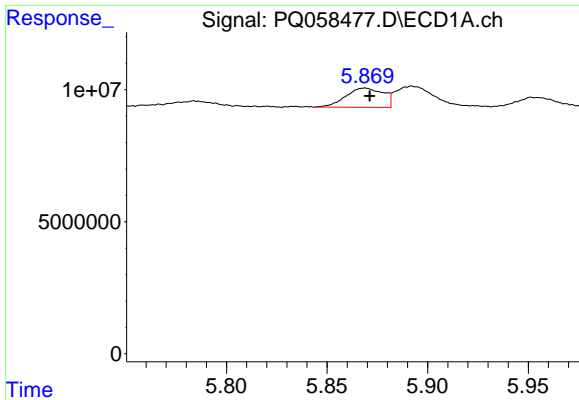
#2 Decachlorobiphenyl

R.T.: 10.601 min
 Delta R.T.: -0.009 min
 Response: 221872800
 Conc: 18.44 ng/ml



#2 Decachlorobiphenyl

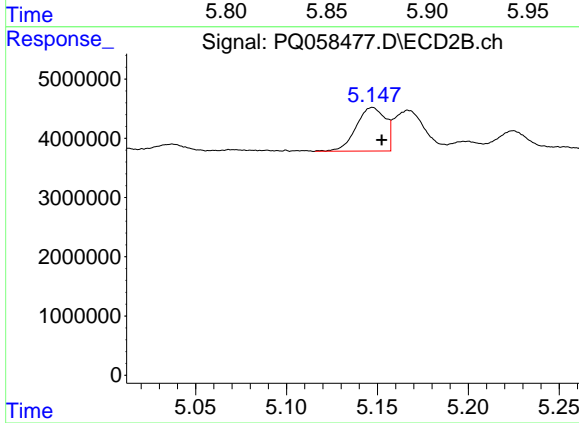
R.T.: 9.177 min
 Delta R.T.: -0.010 min
 Response: 133992405
 Conc: 17.87 ng/ml



#21 AR-1248-1

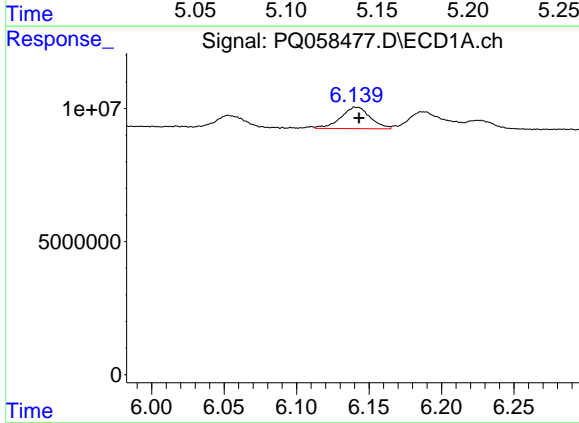
R.T.: 5.869 min
 Delta R.T.: -0.002 min
 Response: 9383797
 Conc: 66.56 ng/ml

Instrument :
 ECD_Q
 ClientSampleId :
 LOQ-SOIL-02-QT2-2022



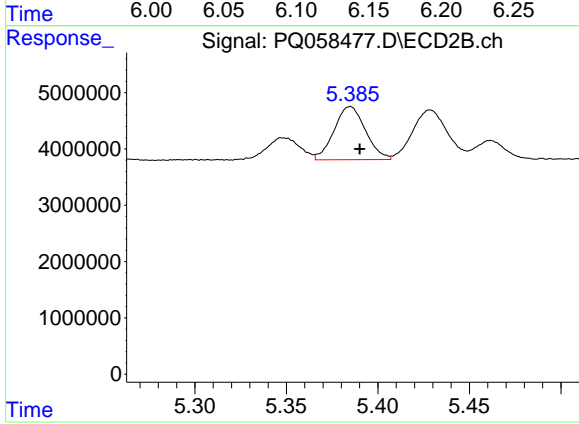
#21 AR-1248-1

R.T.: 5.147 min
 Delta R.T.: -0.005 min
 Response: 8213139
 Conc: 55.27 ng/ml



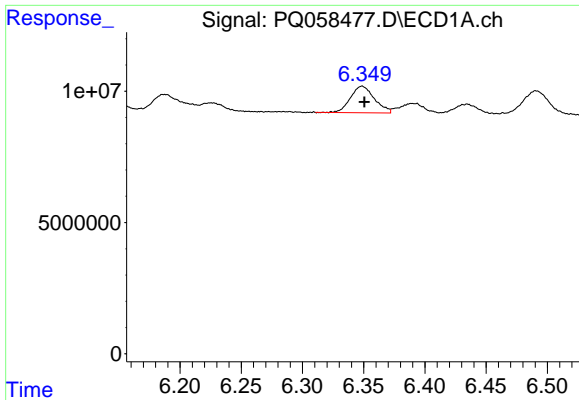
#22 AR-1248-2

R.T.: 6.140 min
 Delta R.T.: -0.003 min
 Response: 11398119
 Conc: 60.61 ng/ml



#22 AR-1248-2

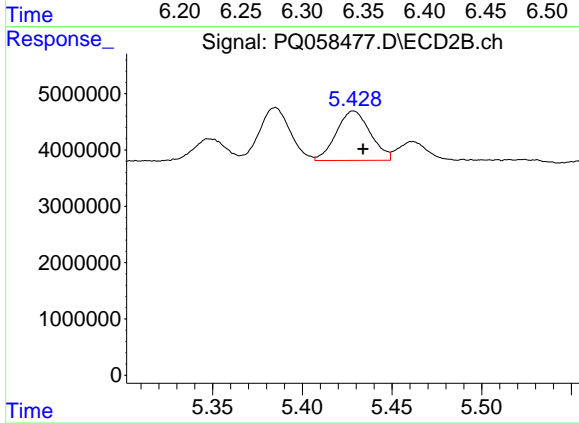
R.T.: 5.385 min
 Delta R.T.: -0.005 min
 Response: 11270222
 Conc: 57.80 ng/ml



#23 AR-1248-3

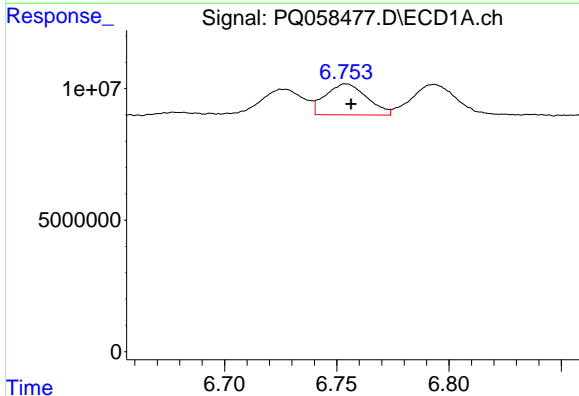
R.T.: 6.349 min
 Delta R.T.: -0.002 min
 Response: 13749137
 Conc: 60.69 ng/ml

Instrument :
 ECD_Q
 ClientSampleId :
 LOQ-SOIL-02-QT2-2022



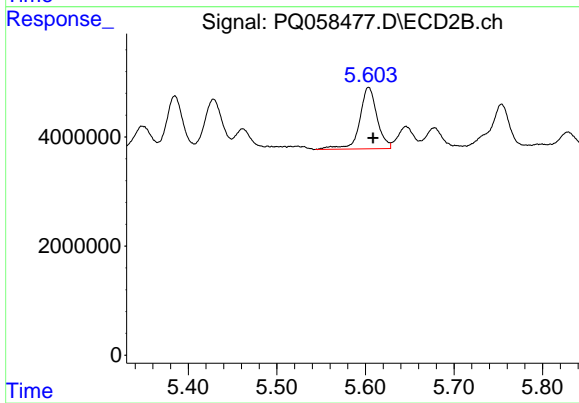
#23 AR-1248-3

R.T.: 5.429 min
 Delta R.T.: -0.005 min
 Response: 11583453
 Conc: 57.60 ng/ml



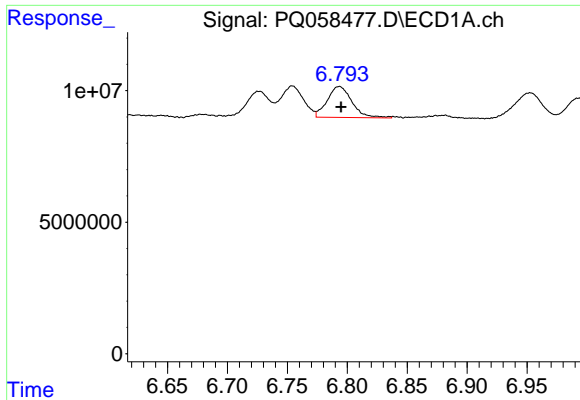
#24 AR-1248-4

R.T.: 6.754 min
 Delta R.T.: -0.002 min
 Response: 15117639
 Conc: 62.85 ng/ml



#24 AR-1248-4

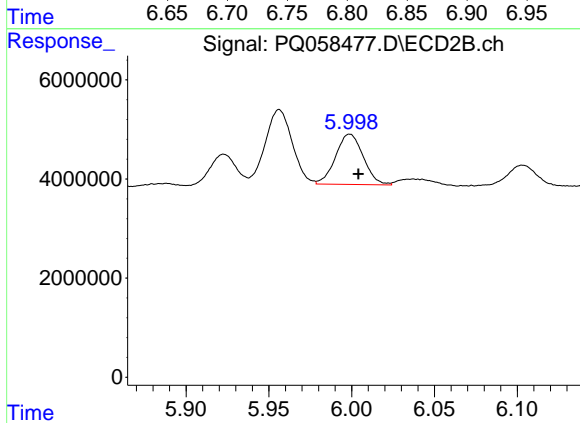
R.T.: 5.604 min
 Delta R.T.: -0.005 min
 Response: 15287535
 Conc: 62.64 ng/ml



#25 AR-1248-5

R.T.: 6.794 min
 Delta R.T.: 0.000 min
 Response: 16796035
 Conc: 66.08 ng/ml

Instrument :
 ECD_Q
 ClientSampleId :
 LOQ-SOIL-02-QT2-2022



#25 AR-1248-5

R.T.: 5.999 min
 Delta R.T.: -0.005 min
 Response: 11793056
 Conc: 52.82 ng/ml