

Data Path : Z:\pestpcbsrv\HPCHEM1\ECD_Q\Data\PQ063022\
 Data File : PQ058485.D
 Signal(s) : Signal #1: ECD1A.ch Signal #2: ECD2B.ch
 Acq On : 30 Jun 2022 15:03
 Operator : YP\AJ
 Sample : N3214-03
 Misc : AR1221 MDL 25 PPB
 ALS Vial : 22 Sample Multiplier: 1

Instrument :
 ECD_Q
ClientSampleId :
 MDL-SOIL-03-QT2-2022

Manual Integrations
APPROVED

Reviewed By :Yogesh Patel 07/01/2022
 Supervised By :Ankita Jodhani 07/01/2022

Integration File signal 1: autoint1.e
 Integration File signal 2: autoint2.e
 Quant Time: Jun 30 23:53:27 2022
 Quant Method : Z:\pestpcbsrv\HPCHEM1\ECD_Q\Method\PQ062922.M
 Quant Title : GC EXTRACTABLES
 QLast Update : Wed Jun 29 16:14:42 2022
 Response via : Initial Calibration
 Integrator: ChemStation

Volume Inj. : 2 µl
 Signal #1 Phase : ZB-MR1 Signal #2 Phase: ZB-MR2
 Signal #1 Info : 30Mx0.32mmx 0.50µ Signal #2 Info : 30M x 0.32mm x 0.25µm

Compound	RT#1	RT#2	Resp#1	Resp#2	ng/ml	ng/ml

System Monitoring Compounds						
1) SA Tetrachlo...	4.684	4.044	191.6E6	155.0E6	14.971	14.306
2) SA Decachlor...	10.603	9.178	183.1E6	112.2E6	15.221	14.964
Target Compounds						
8) L2 AR-1221-1	4.897	4.257	3363572	2001610	29.876m	21.342 #
9) L2 AR-1221-2	4.995	4.350	4650691	3217207	51.981m	46.121
10) L2 AR-1221-3	5.064	4.426	5701921	4337893	20.763	19.314

(f)=RT Delta > 1/2 Window (#)=Amounts differ by > 25% (m)=manual int.

Data Path : Z:\pestpcbsrv\HPCHEM1\ECD_Q\Data\PQ063022\
 Data File : PQ058485.D
 Signal(s) : Signal #1: ECD1A.ch Signal #2: ECD2B.ch
 Acq On : 30 Jun 2022 15:03
 Operator : YP\AJ
 Sample : N3214-03
 Misc : AR1221 MDL 25 PPB
 ALS Vial : 22 Sample Multiplier: 1

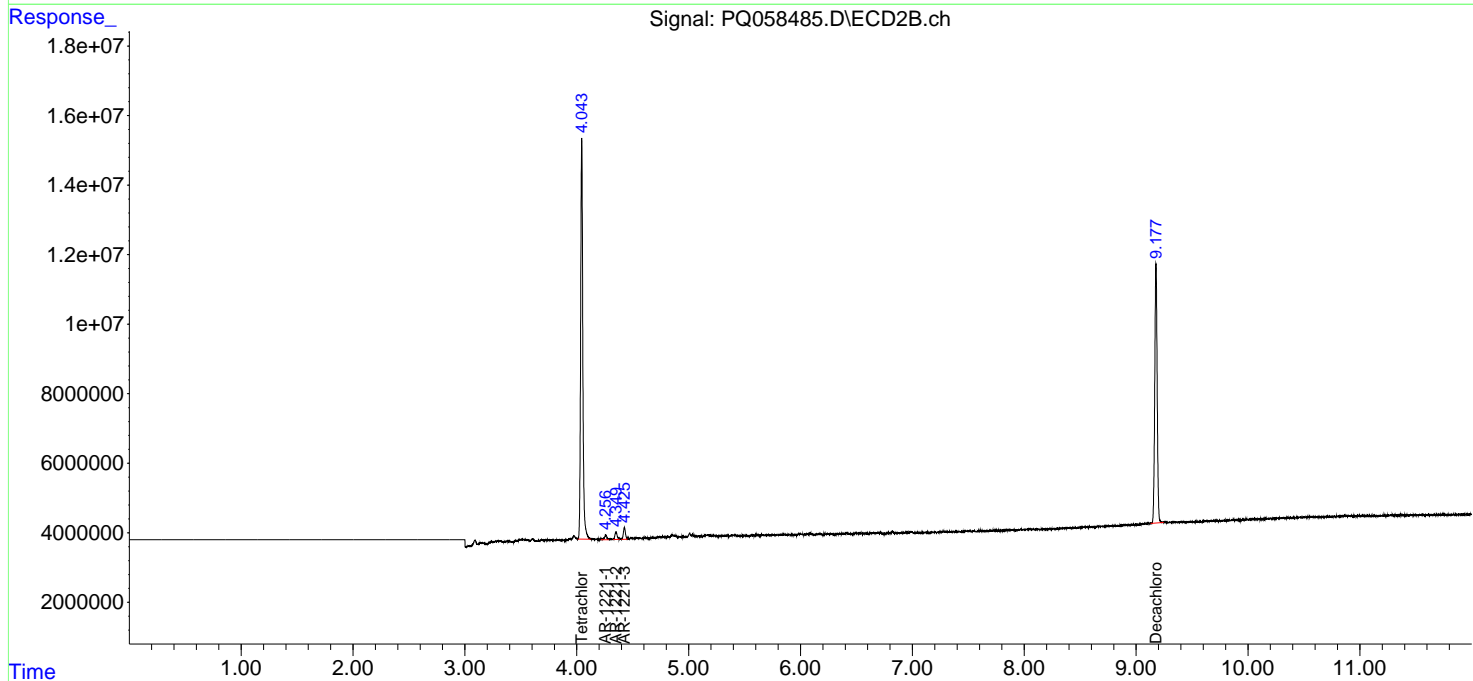
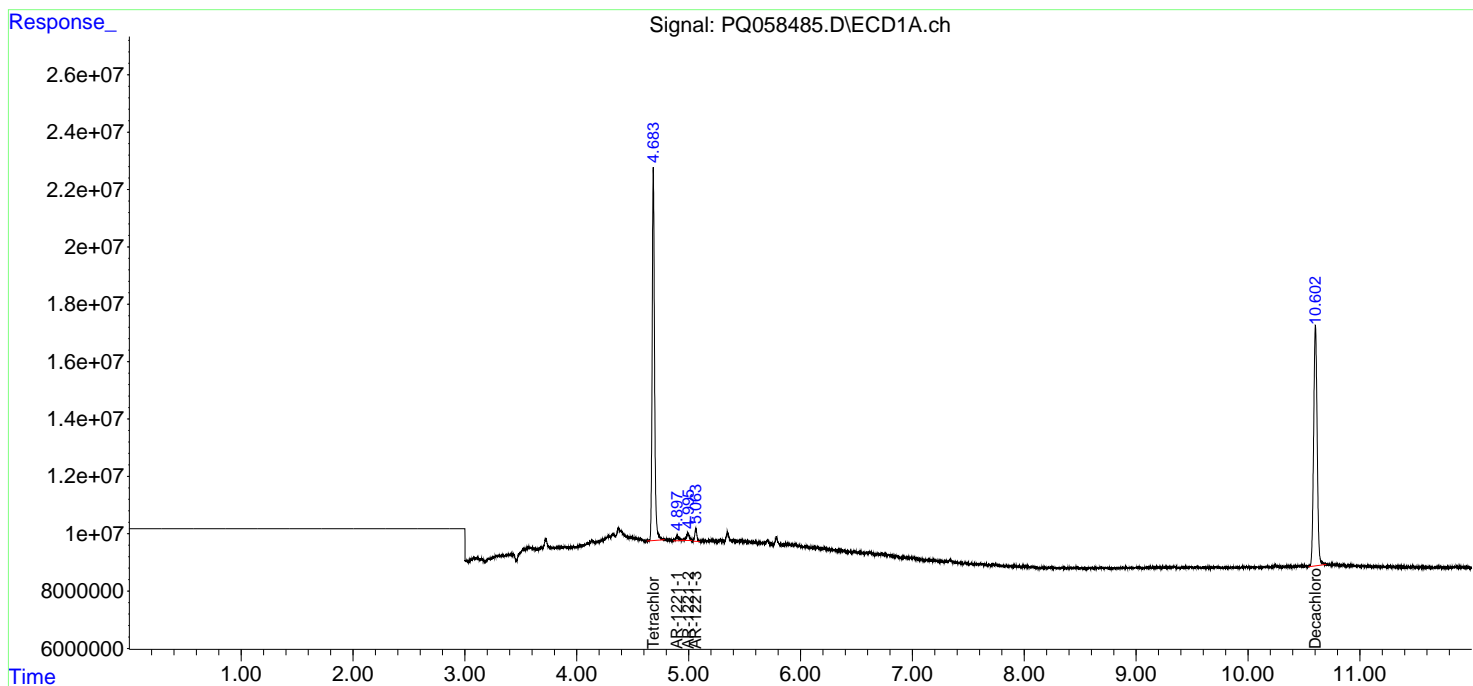
Instrument :
 ECD_Q
 ClientSampleId :
 MDL-SOIL-03-QT2-2022

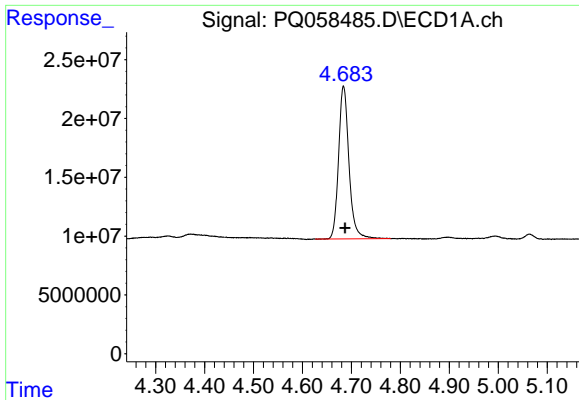
Manual Integrations
 APPROVED

Reviewed By :Yogesh Patel 07/01/2022
 Supervised By :Ankita Jodhani 07/01/2022

Integration File signal 1: autoint1.e
 Integration File signal 2: autoint2.e
 Quant Time: Jun 30 23:53:27 2022
 Quant Method : Z:\pestpcbsrv\HPCHEM1\ECD_Q\Method\PQ062922.M
 Quant Title : GC EXTRACTABLES
 QLast Update : Wed Jun 29 16:14:42 2022
 Response via : Initial Calibration
 Integrator: ChemStation

Volume Inj. : 2 µl
 Signal #1 Phase : ZB-MR1 Signal #2 Phase: ZB-MR2
 Signal #1 Info : 30Mx0.32mmx 0.50µ Signal #2 Info : 30M x 0.32mm x 0.25µm



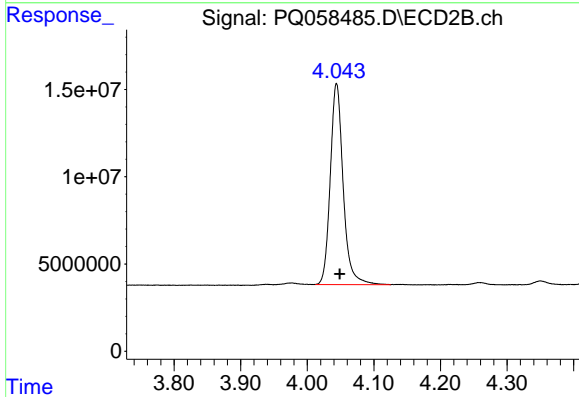


#1 Tetrachloro-m-xylene
 R.T.: 4.684 min
 Delta R.T.: -0.003 min
 Response: 191649341
 Conc: 14.97 ng/ml

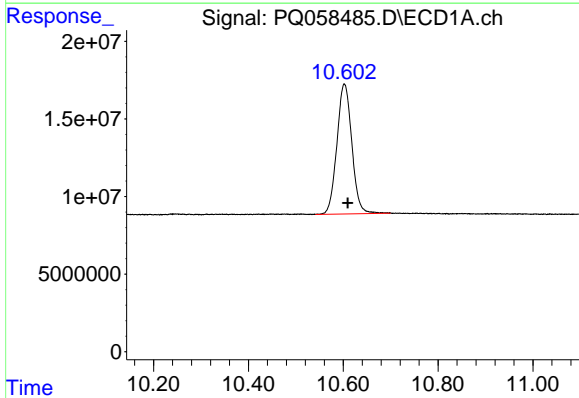
Instrument :
 ECD_Q
 ClientSampleId :
 MDL-SOIL-03-QT2-2022

Manual Integrations
 APPROVED

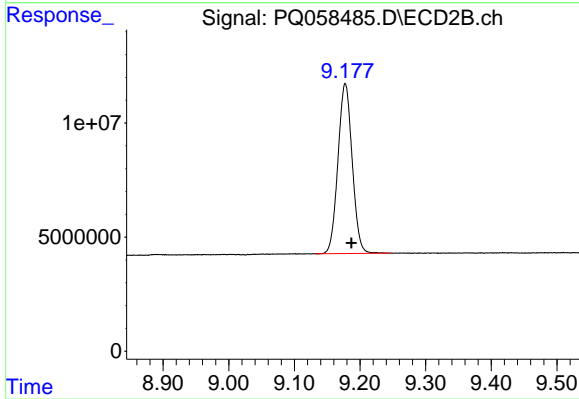
Reviewed By :Yogesh Patel 07/01/2022
 Supervised By :Ankita Jodhani 07/01/2022



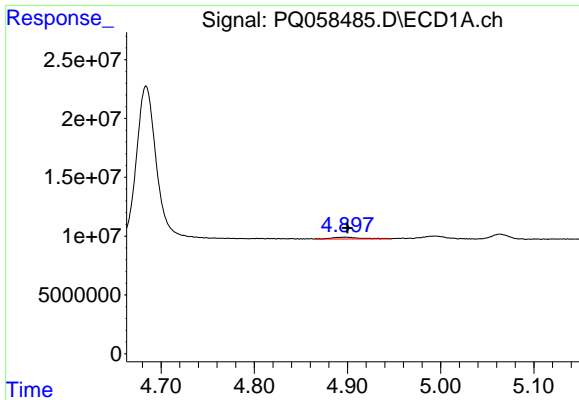
#1 Tetrachloro-m-xylene
 R.T.: 4.044 min
 Delta R.T.: -0.005 min
 Response: 155047193
 Conc: 14.31 ng/ml



#2 Decachlorobiphenyl
 R.T.: 10.603 min
 Delta R.T.: -0.007 min
 Response: 183137948
 Conc: 15.22 ng/ml



#2 Decachlorobiphenyl
 R.T.: 9.178 min
 Delta R.T.: -0.009 min
 Response: 112211530
 Conc: 14.96 ng/ml



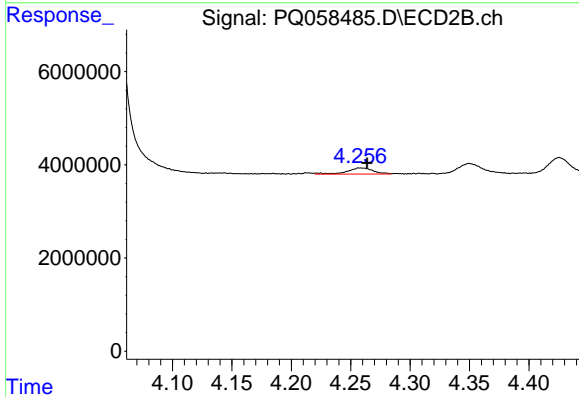
#8 AR-1221-1

R.T.: 4.897 min
 Delta R.T.: -0.003 min
 Response: 3363572
 Conc: 29.88 ng/ml

Instrument : ECD_Q
 ClientSampleId : MDL-SOIL-03-QT2-2022

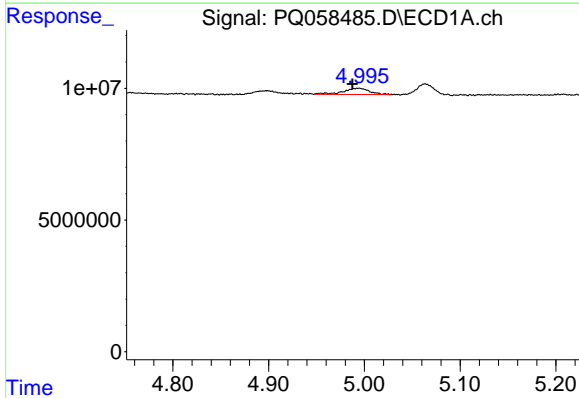
Manual Integrations
 APPROVED

Reviewed By :Yogesh Patel 07/01/2022
 Supervised By :Ankita Jodhani 07/01/2022



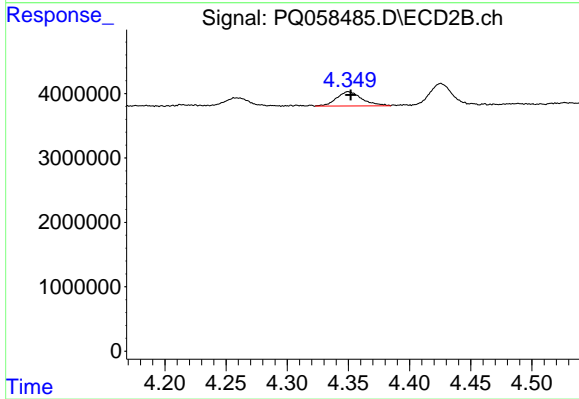
#8 AR-1221-1

R.T.: 4.257 min
 Delta R.T.: -0.007 min
 Response: 2001610
 Conc: 21.34 ng/ml



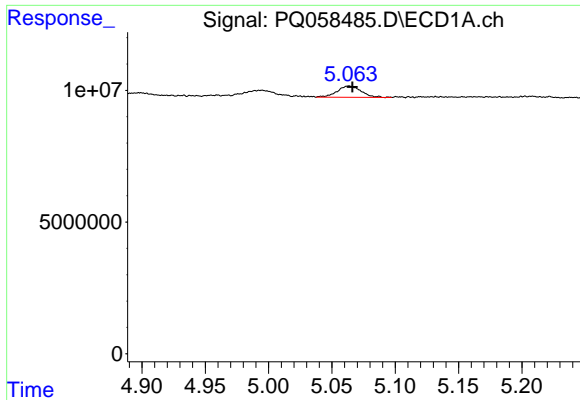
#9 AR-1221-2

R.T.: 4.995 min
 Delta R.T.: 0.007 min
 Response: 4650691
 Conc: 51.98 ng/ml m



#9 AR-1221-2

R.T.: 4.350 min
 Delta R.T.: -0.002 min
 Response: 3217207
 Conc: 46.12 ng/ml



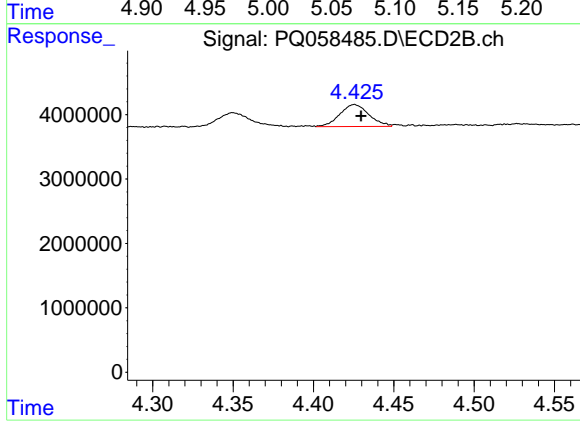
#10 AR-1221-3

R.T.: 5.064 min
 Delta R.T.: -0.002 min
 Response: 5701921
 Conc: 20.76 ng/ml

Instrument :
 ECD_Q
 ClientSampleId :
 MDL-SOIL-03-QT2-2022

Manual Integrations
 APPROVED

Reviewed By :Yogesh Patel 07/01/2022
 Supervised By :Ankita Jodhani 07/01/2022



#10 AR-1221-3

R.T.: 4.426 min
 Delta R.T.: -0.004 min
 Response: 4337893
 Conc: 19.31 ng/ml