

Data Path : Z:\pestpcbsrv\HPCHEM1\ECD_Q\Data\PQ063022\
 Data File : PQ058493.D
 Signal(s) : Signal #1: ECD1A.ch Signal #2: ECD2B.ch
 Acq On : 30 Jun 2022 17:44
 Operator : YP\AJ
 Sample : I.BLK
 Misc :
 ALS Vial : 2 Sample Multiplier: 1

Instrument :
 ECD_Q
 ClientSampleId :
 I.BLK

Integration File signal 1: autoint1.e
 Integration File signal 2: autoint2.e
 Quant Time: Jul 01 00:03:30 2022
 Quant Method : Z:\pestpcbsrv\HPCHEM1\ECD_Q\Method\PQ062922.M
 Quant Title : GC EXTRACTABLES
 QLast Update : Wed Jun 29 16:14:42 2022
 Response via : Initial Calibration
 Integrator: ChemStation

Volume Inj. : 2 µl
 Signal #1 Phase : ZB-MR1 Signal #2 Phase: ZB-MR2
 Signal #1 Info : 30Mx0.32mmx 0.50µ Signal #2 Info : 30M x 0.32mm x 0.25µm

Compound	RT#1	RT#2	Resp#1	Resp#2	ng/ml	ng/ml

System Monitoring Compounds						
1) SA Tetrachlo...	4.683	4.043	248.7E6	207.7E6	19.429	19.164
2) SA Decachlor...	10.602	9.177	272.0E6	170.3E6	22.606	22.707

Target Compounds

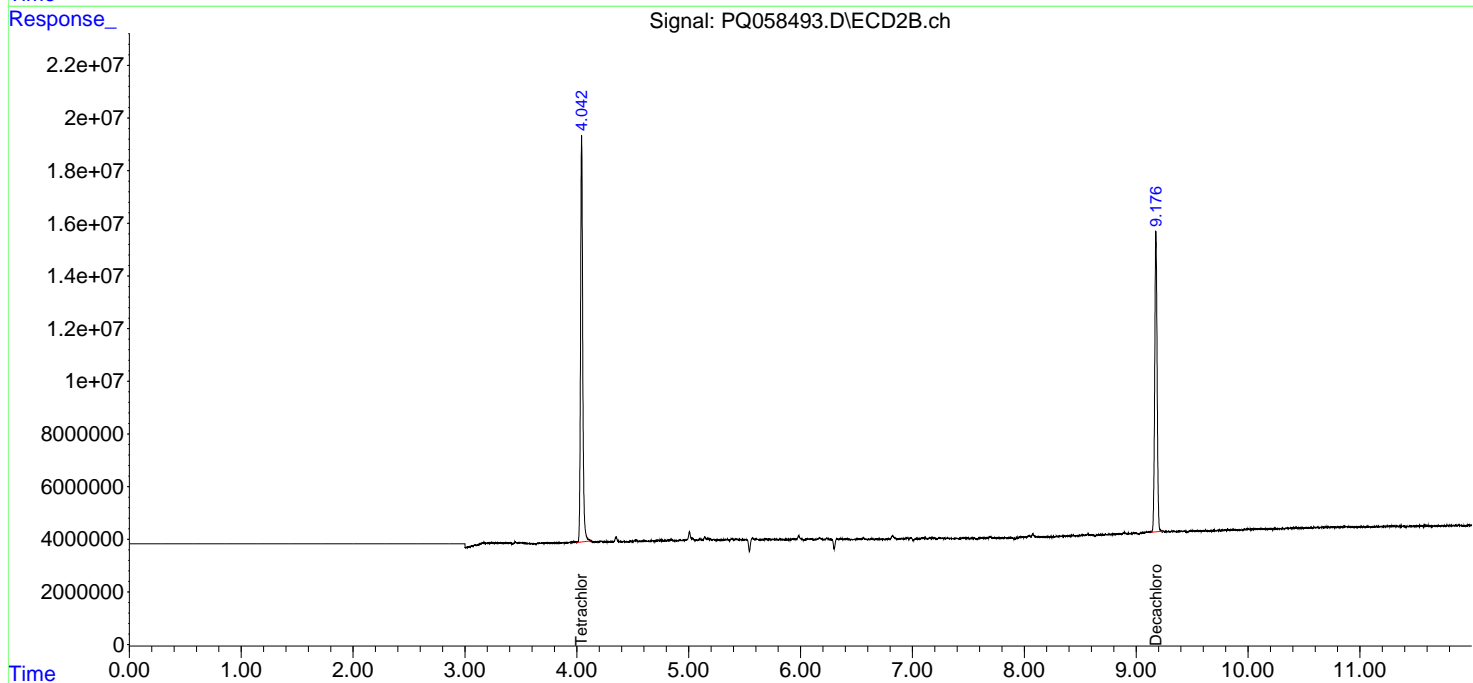
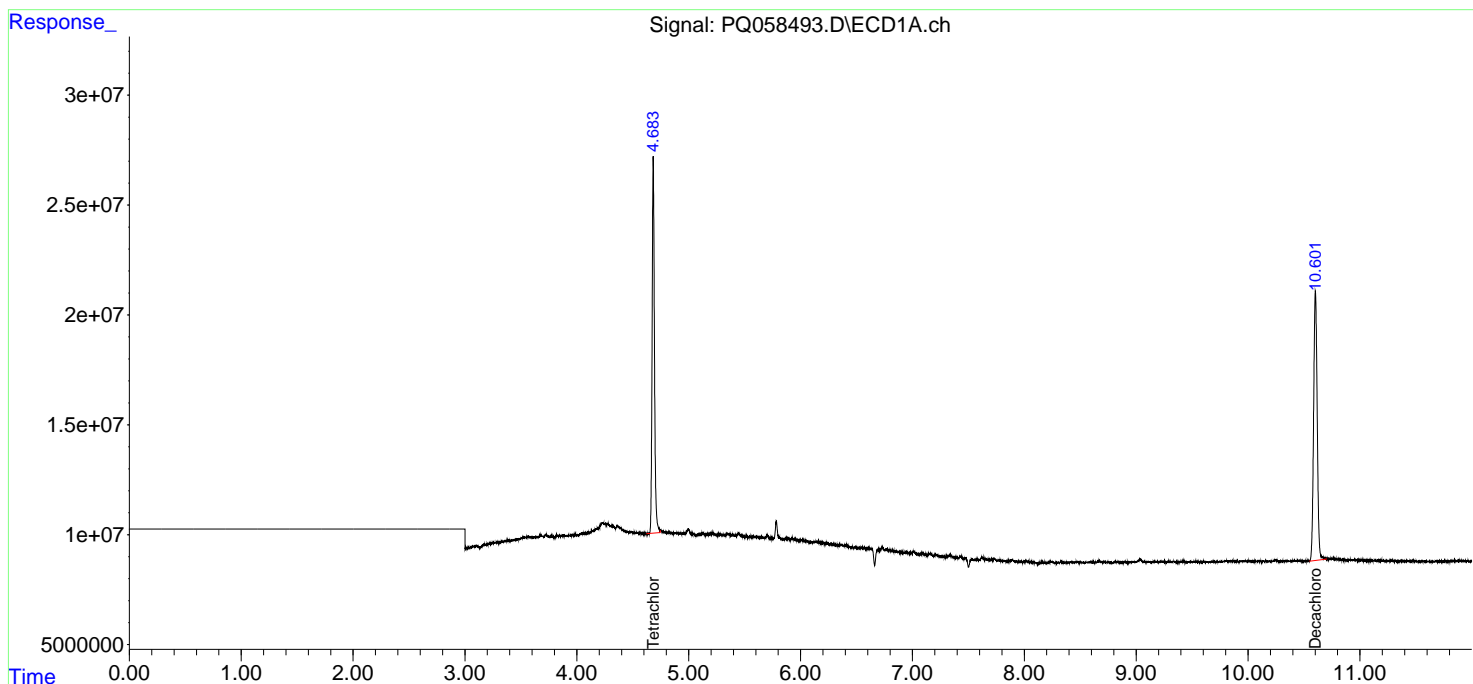
(f)=RT Delta > 1/2 Window (#)=Amounts differ by > 25% (m)=manual int.

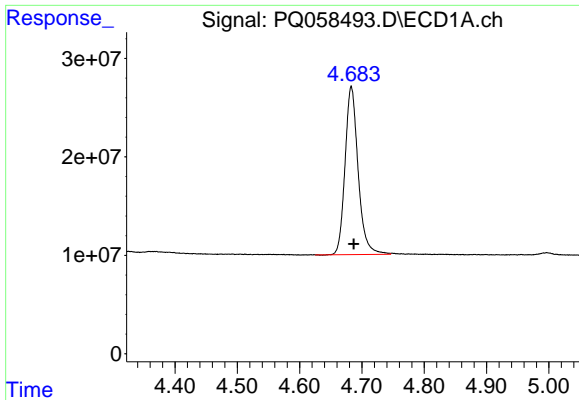
Data Path : Z:\pestpcbsrv\HPCHEM1\ECD_Q\Data\PQ063022\
 Data File : PQ058493.D
 Signal(s) : Signal #1: ECD1A.ch Signal #2: ECD2B.ch
 Acq On : 30 Jun 2022 17:44
 Operator : YP\AJ
 Sample : I.BLK
 Misc :
 ALS Vial : 2 Sample Multiplier: 1

Instrument :
 ECD_Q
 ClientSampleId :
 I.BLK

Integration File signal 1: autoint1.e
 Integration File signal 2: autoint2.e
 Quant Time: Jul 01 00:03:30 2022
 Quant Method : Z:\pestpcbsrv\HPCHEM1\ECD_Q\Method\PQ062922.M
 Quant Title : GC EXTRACTABLES
 QLast Update : Wed Jun 29 16:14:42 2022
 Response via : Initial Calibration
 Integrator: ChemStation

Volume Inj. : 2 µl
 Signal #1 Phase : ZB-MR1 Signal #2 Phase: ZB-MR2
 Signal #1 Info : 30Mx0.32mmx 0.50µ Signal #2 Info : 30M x 0.32mm x 0.25µm

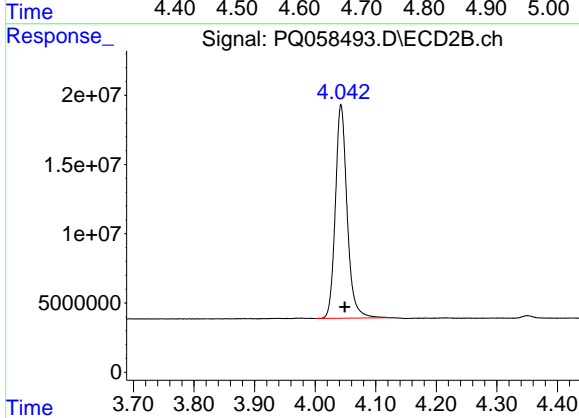




#1 Tetrachloro-m-xylene

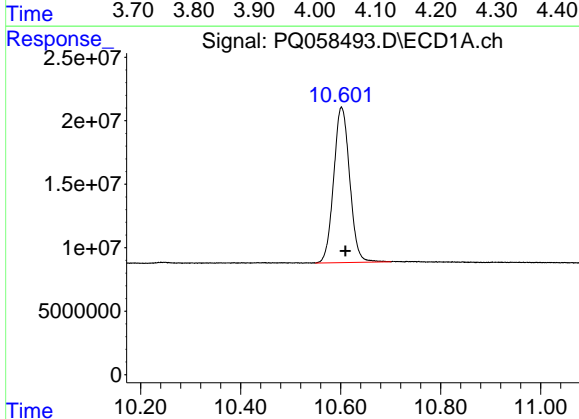
R.T.: 4.683 min
 Delta R.T.: -0.004 min
 Response: 248730532
 Conc: 19.43 ng/ml

Instrument :
 ECD_Q
 ClientSampleId :
 I.BLK



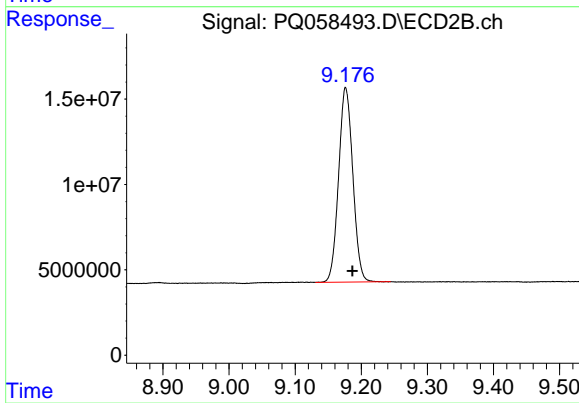
#1 Tetrachloro-m-xylene

R.T.: 4.043 min
 Delta R.T.: -0.006 min
 Response: 207700766
 Conc: 19.16 ng/ml



#2 Decachlorobiphenyl

R.T.: 10.602 min
 Delta R.T.: -0.008 min
 Response: 271997694
 Conc: 22.61 ng/ml



#2 Decachlorobiphenyl

R.T.: 9.177 min
 Delta R.T.: -0.010 min
 Response: 170273929
 Conc: 22.71 ng/ml