

Data Path : Z:\pestpcbsrv\HPCHEM1\ECD_Q\Data\PQ063023\
 Data File : PQ061790.D
 Signal(s) : Signal #1: ECD1A.ch Signal #2: ECD2B.ch
 Acq On : 30 Jun 2023 11:08
 Operator : YP\AJ
 Sample : AR1254CCC500
 Misc :
 ALS Vial : 6 Sample Multiplier: 1

Instrument :
 ECD_Q
 ClientSampleId :
 AR1254CCC500

Integration File signal 1: autoint1.e
 Integration File signal 2: autoint2.e
 Quant Time: Jul 01 00:21:25 2023
 Quant Method : Z:\pestpcbsrv\HPCHEM1\ECD_Q\Method\PQ060923.M
 Quant Title : GC EXTRACTABLES
 QLast Update : Fri Jun 09 18:19:31 2023
 Response via : Initial Calibration
 Integrator: ChemStation

Volume Inj. : 2 µl
 Signal #1 Phase : ZB-MR1 Signal #2 Phase: ZB-MR2
 Signal #1 Info : 30Mx0.32mmx 0.50µ Signal #2 Info : 30M x 0.32mm x 0.25µm

Compound	RT#1	RT#2	Resp#1	Resp#2	ng/ml	ng/ml

System Monitoring Compounds						
1) SA Tetrachlo...	3.405	2.759	237.9E6	131.7E6	52.923	49.334
2) SA Decachlor...	8.582	7.529	174.0E6	163.1E6	51.640	48.607
Target Compounds						
26) L6 AR-1254-1	5.326	4.516	86966967	79515886	509.171	483.538
27) L6 AR-1254-2	5.543	4.663	135.7E6	71853677	507.580	477.732
28) L6 AR-1254-3	5.897	5.044	143.3E6	114.6E6	512.781	492.597
29) L6 AR-1254-4	6.182	5.269	106.1E6	72235391	518.434	502.785m
30) L6 AR-1254-5	6.595	5.675	120.7E6	112.7E6	511.541	493.908

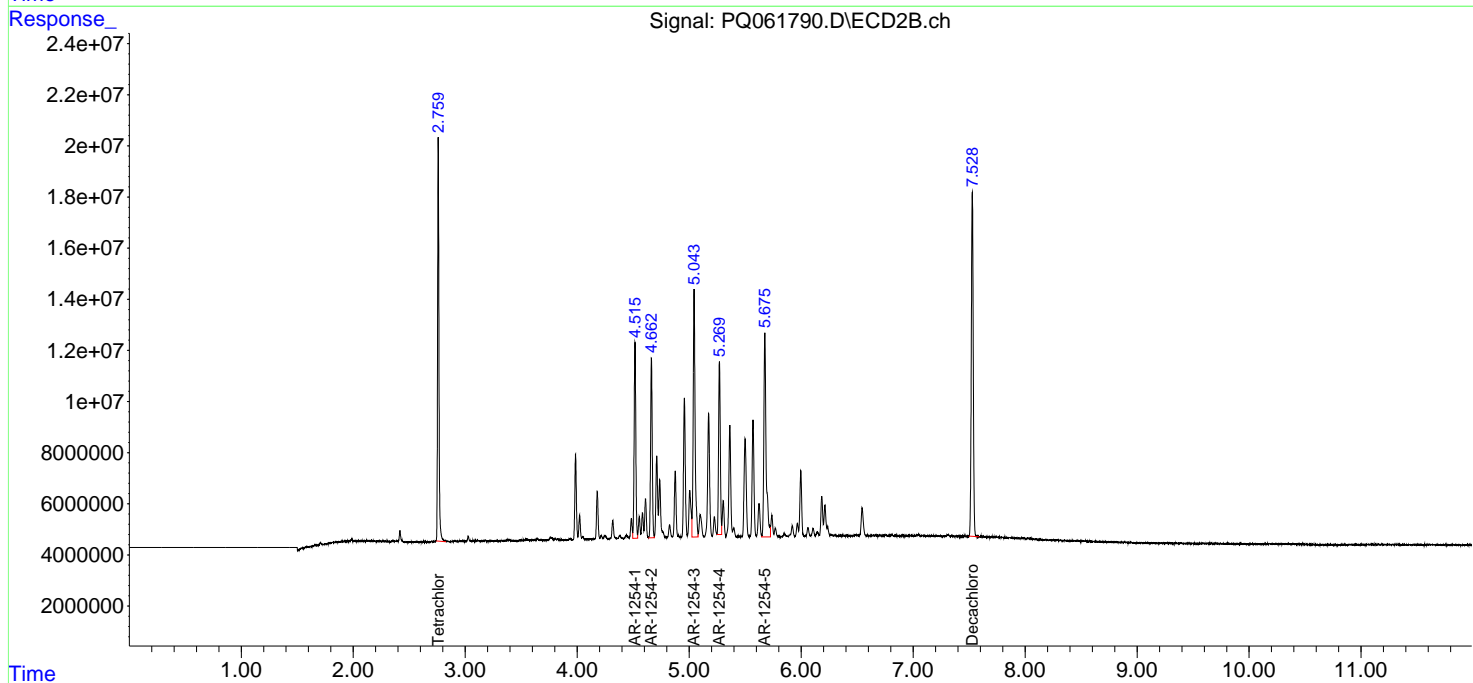
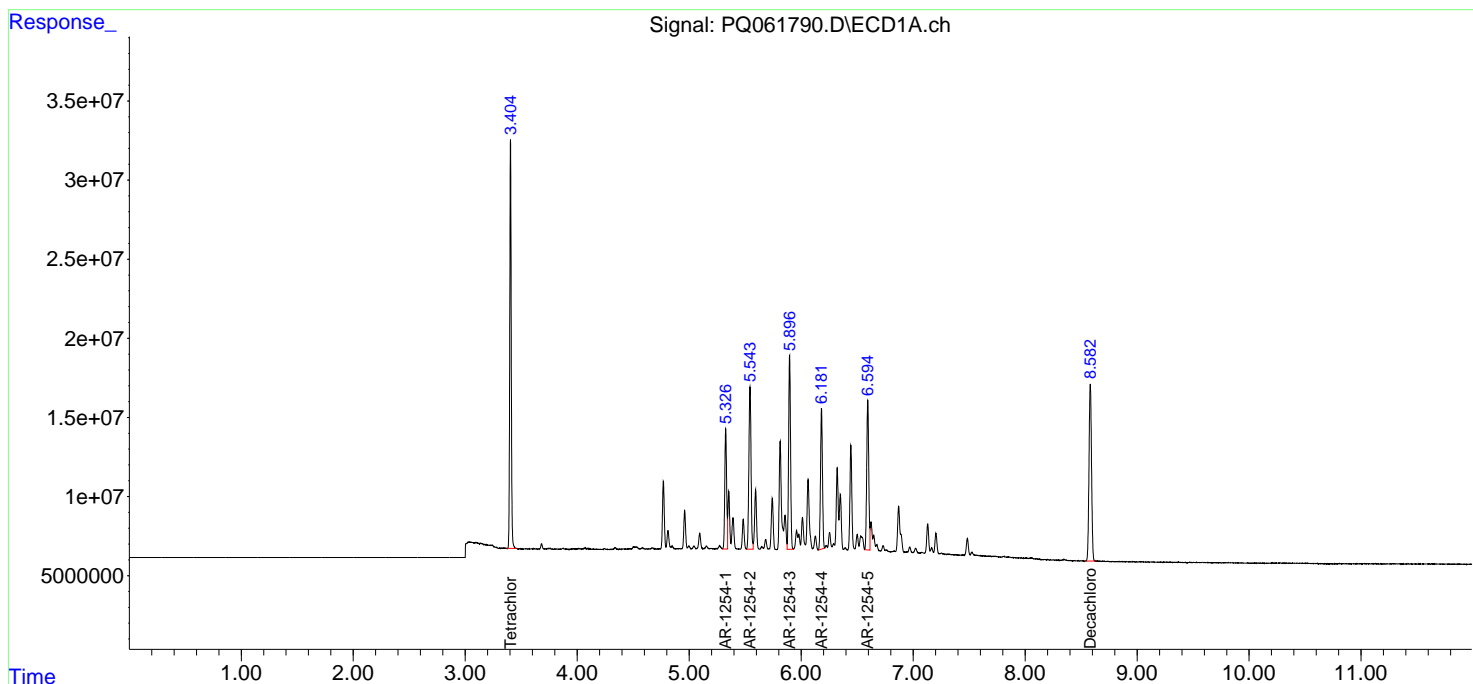
(f)=RT Delta > 1/2 Window (#)=Amounts differ by > 25% (m)=manual int.

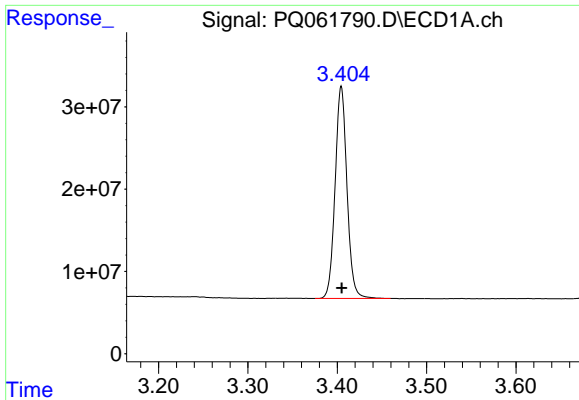
Data Path : Z:\pestpcbsrv\HPCHEM1\ECD_Q\Data\PQ063023\
 Data File : PQ061790.D
 Signal(s) : Signal #1: ECD1A.ch Signal #2: ECD2B.ch
 Acq On : 30 Jun 2023 11:08
 Operator : YP\AJ
 Sample : AR1254CCC500
 Misc :
 ALS Vial : 6 Sample Multiplier: 1

Instrument :
 ECD_Q
 ClientSampleId :
 AR1254CCC500

Integration File signal 1: autoint1.e
 Integration File signal 2: autoint2.e
 Quant Time: Jul 01 00:21:25 2023
 Quant Method : Z:\pestpcbsrv\HPCHEM1\ECD_Q\Method\PQ060923.M
 Quant Title : GC EXTRACTABLES
 QLast Update : Fri Jun 09 18:19:31 2023
 Response via : Initial Calibration
 Integrator: ChemStation

Volume Inj. : 2 µl
 Signal #1 Phase : ZB-MR1 Signal #2 Phase: ZB-MR2
 Signal #1 Info : 30Mx0.32mmx 0.50µ Signal #2 Info : 30M x 0.32mm x 0.25µm

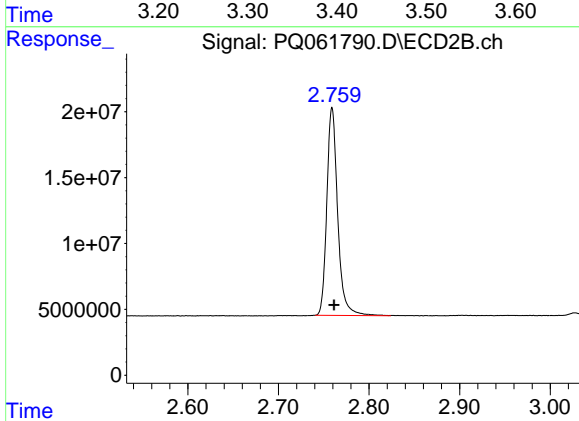




#1 Tetrachloro-m-xylene

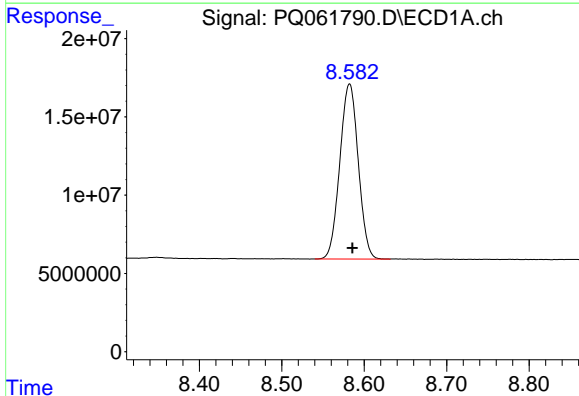
R.T.: 3.405 min
Delta R.T.: 0.000 min
Response: 237890467
Conc: 52.92 ng/ml

Instrument :
ECD_Q
ClientSampleId :
AR1254CCC500



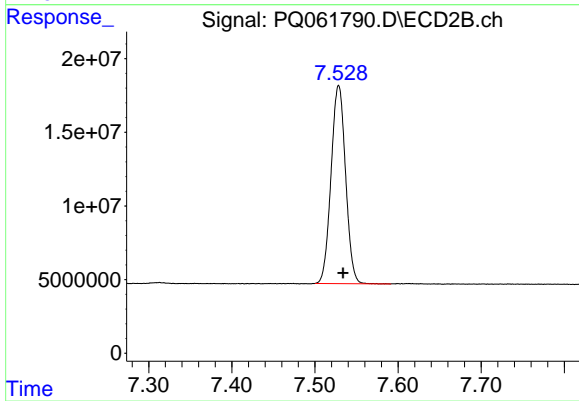
#1 Tetrachloro-m-xylene

R.T.: 2.759 min
Delta R.T.: -0.002 min
Response: 131738940
Conc: 49.33 ng/ml



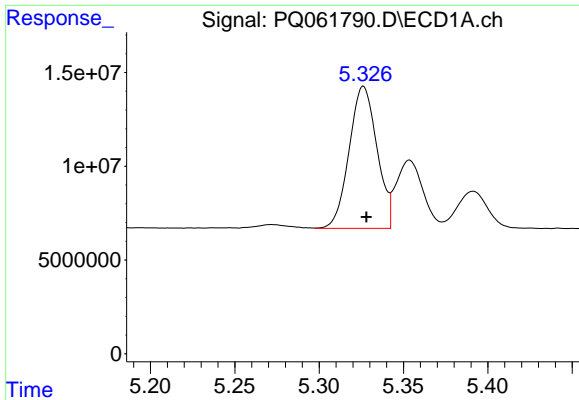
#2 Decachlorobiphenyl

R.T.: 8.582 min
Delta R.T.: -0.004 min
Response: 173958984
Conc: 51.64 ng/ml



#2 Decachlorobiphenyl

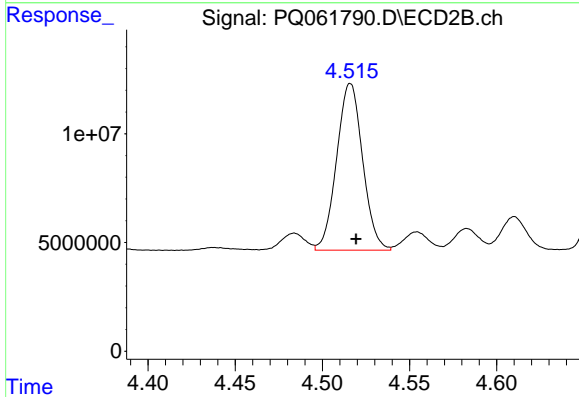
R.T.: 7.529 min
Delta R.T.: -0.005 min
Response: 163149639
Conc: 48.61 ng/ml



#26 AR-1254-1

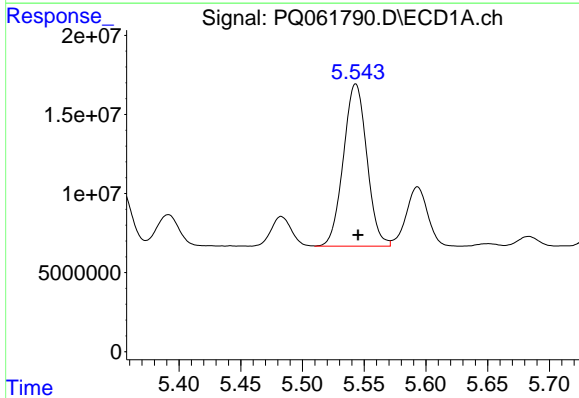
R.T.: 5.326 min
 Delta R.T.: -0.002 min
 Response: 86966967
 Conc: 509.17 ng/ml

Instrument :
 ECD_Q
 ClientSampleId :
 AR1254CCC500



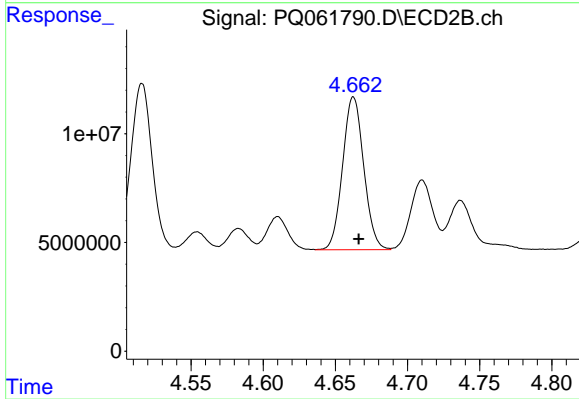
#26 AR-1254-1

R.T.: 4.516 min
 Delta R.T.: -0.003 min
 Response: 79515886
 Conc: 483.54 ng/ml



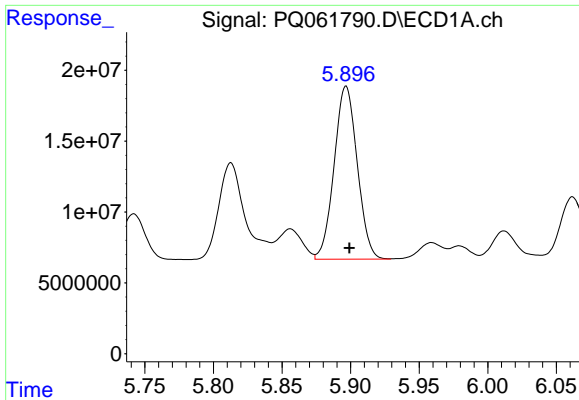
#27 AR-1254-2

R.T.: 5.543 min
 Delta R.T.: -0.002 min
 Response: 135719184
 Conc: 507.58 ng/ml



#27 AR-1254-2

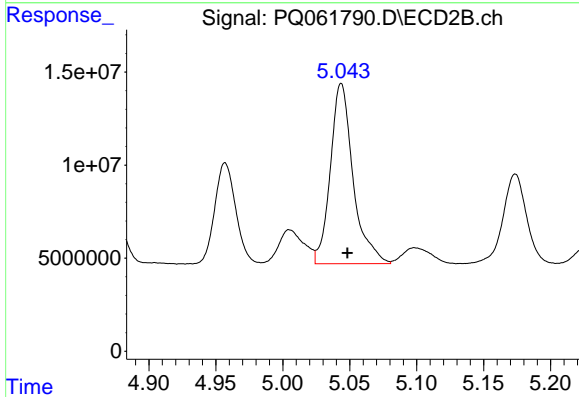
R.T.: 4.663 min
 Delta R.T.: -0.004 min
 Response: 71853677
 Conc: 477.73 ng/ml



#28 AR-1254-3

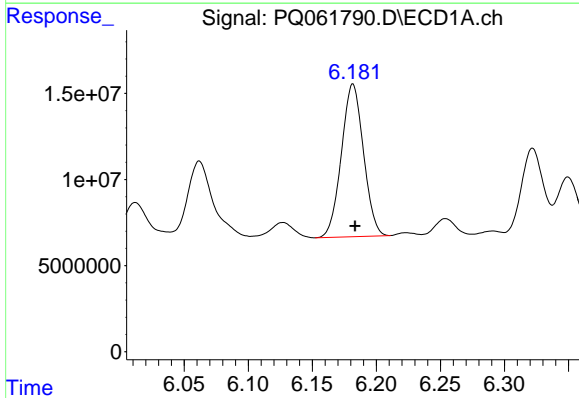
R.T.: 5.897 min
 Delta R.T.: -0.002 min
 Response: 143293271
 Conc: 512.78 ng/ml

Instrument :
 ECD_Q
 ClientSampleId :
 AR1254CCC500



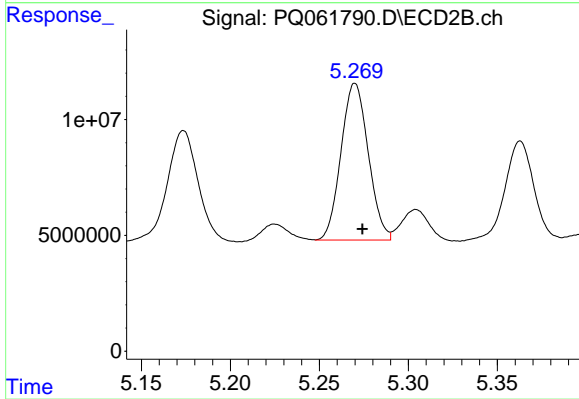
#28 AR-1254-3

R.T.: 5.044 min
 Delta R.T.: -0.005 min
 Response: 114626501
 Conc: 492.60 ng/ml



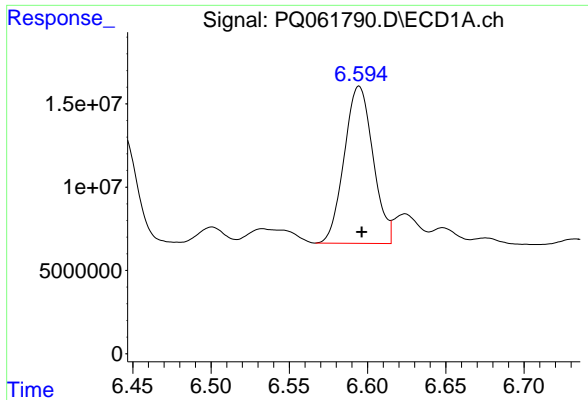
#29 AR-1254-4

R.T.: 6.182 min
 Delta R.T.: -0.002 min
 Response: 106115488
 Conc: 518.43 ng/ml



#29 AR-1254-4

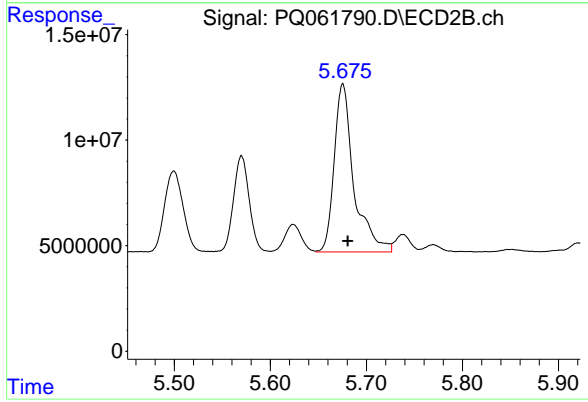
R.T.: 5.269 min
 Delta R.T.: -0.005 min
 Response: 72235391
 Conc: 502.79 ng/ml m



#30 AR-1254-5

R.T.: 6.595 min
Delta R.T.: -0.002 min
Response: 120663960
Conc: 511.54 ng/ml

Instrument :
ECD_Q
ClientSampleId :
AR1254CCC500



#30 AR-1254-5

R.T.: 5.675 min
Delta R.T.: -0.005 min
Response: 112665325
Conc: 493.91 ng/ml