

Data Path : Z:\pestpcbsrv\HPCHEM1\ECD_Q\Data\PQ063023\
 Data File : PQ061830.D
 Signal(s) : Signal #1: ECD1A.ch Signal #2: ECD2B.ch
 Acq On : 01 Jul 2023 00:52
 Operator : YP\AJ
 Sample : AR1248CCC500
 Misc :
 ALS Vial : 5 Sample Multiplier: 1

Instrument :
 ECD_Q
ClientSampleId :
 AR1248CCC500

Integration File signal 1: autoint1.e
 Integration File signal 2: autoint2.e
 Quant Time: Jul 02 07:14:36 2023
 Quant Method : Z:\pestpcbsrv\HPCHEM1\ECD_Q\Method\PQ060923.M
 Quant Title : GC EXTRACTABLES
 QLast Update : Fri Jun 09 18:19:31 2023
 Response via : Initial Calibration
 Integrator: ChemStation

Volume Inj. : 2 µl
 Signal #1 Phase : ZB-MR1 Signal #2 Phase: ZB-MR2
 Signal #1 Info : 30Mx0.32mmx 0.50µ Signal #2 Info : 30M x 0.32mm x 0.25µm

Compound	RT#1	RT#2	Resp#1	Resp#2	ng/ml	ng/ml

System Monitoring Compounds						
1) SA Tetrachlo...	3.405	2.759	245.5E6	129.3E6	54.623	48.422
2) SA Decachlor...	8.584	7.530	179.6E6	163.3E6	53.325	48.661
Target Compounds						
21) L5 AR-1248-1	4.505	3.761	49870983	29625834	553.482	476.028
22) L5 AR-1248-2	4.771	3.987	67225445	44380811	528.812	459.162
23) L5 AR-1248-3	4.961	4.023	82070971	42507023	532.788	464.999
24) L5 AR-1248-4	5.355	4.181	91552820	54014172	539.342	477.026
25) L5 AR-1248-5	5.390	4.555	85060610	55019461	519.204	499.560

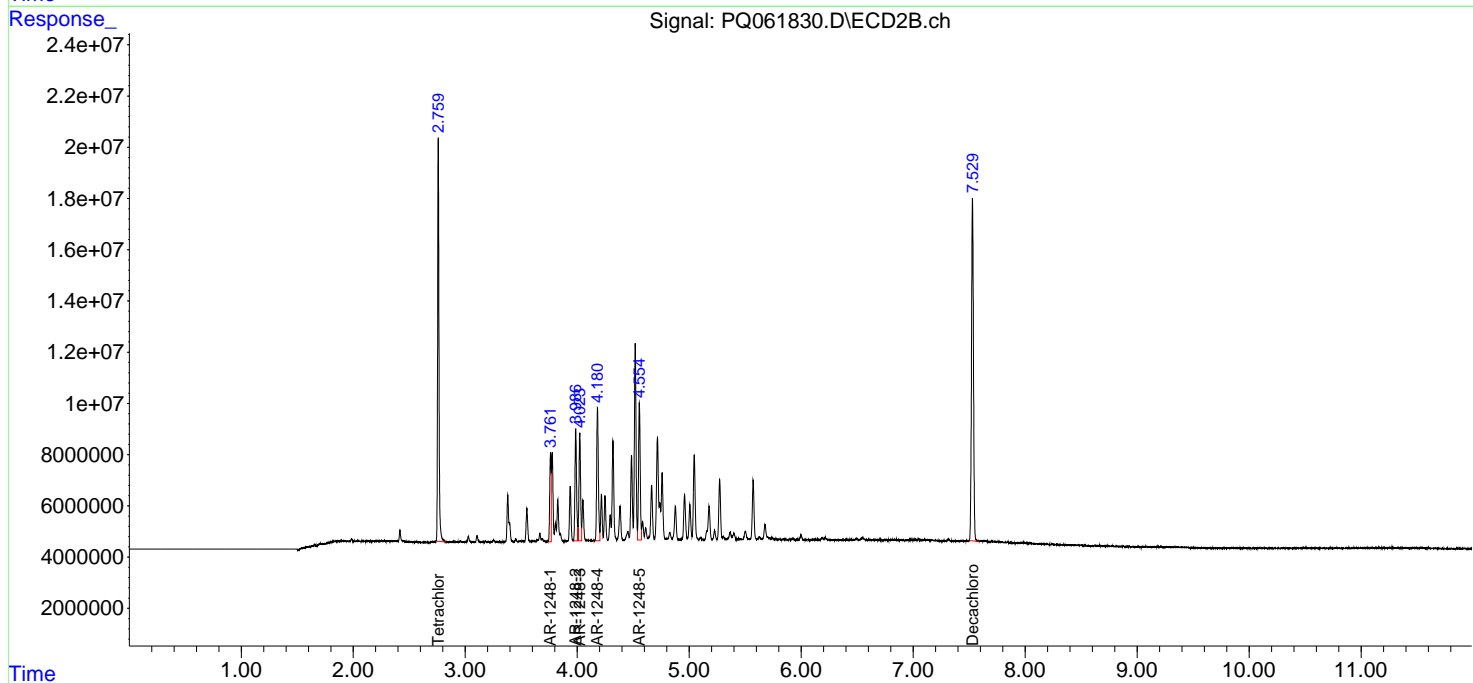
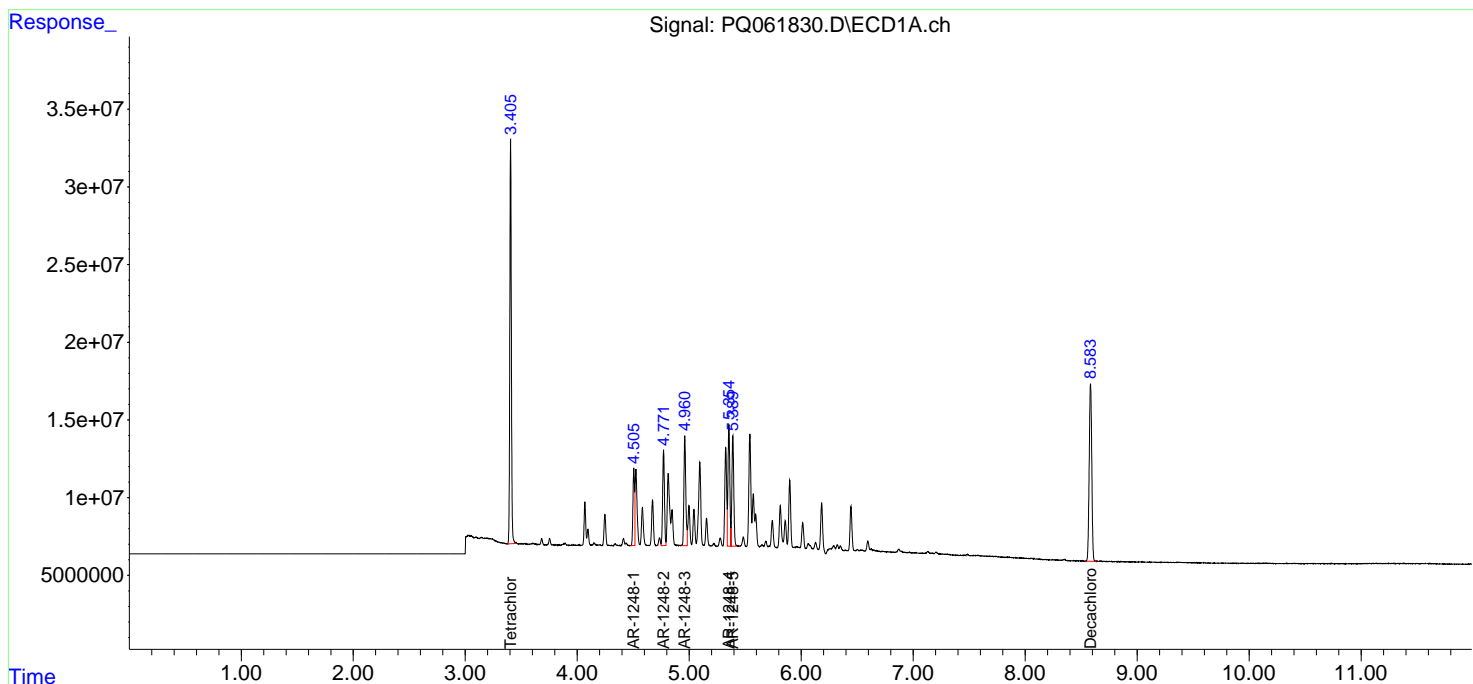
(f)=RT Delta > 1/2 Window (#)=Amounts differ by > 25% (m)=manual int.

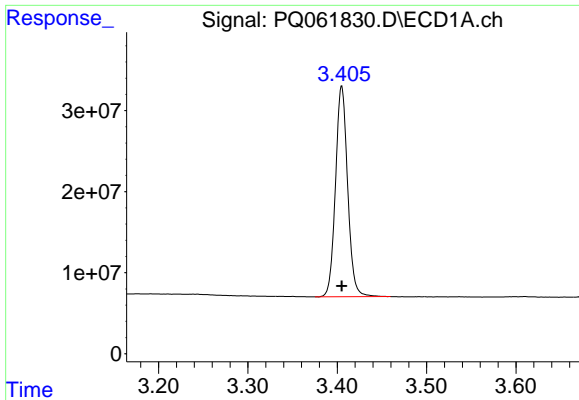
Data Path : Z:\pestpcbsrv\HPCHEM1\ECD_Q\Data\PQ063023\
 Data File : PQ061830.D
 Signal(s) : Signal #1: ECD1A.ch Signal #2: ECD2B.ch
 Acq On : 01 Jul 2023 00:52
 Operator : YP\AJ
 Sample : AR1248CCC500
 Misc :
 ALS Vial : 5 Sample Multiplier: 1

Instrument :
 ECD_Q
 ClientSampleId :
 AR1248CCC500

Integration File signal 1: autoint1.e
 Integration File signal 2: autoint2.e
 Quant Time: Jul 02 07:14:36 2023
 Quant Method : Z:\pestpcbsrv\HPCHEM1\ECD_Q\Method\PQ060923.M
 Quant Title : GC EXTRACTABLES
 QLast Update : Fri Jun 09 18:19:31 2023
 Response via : Initial Calibration
 Integrator: ChemStation

Volume Inj. : 2 µl
 Signal #1 Phase : ZB-MR1 Signal #2 Phase: ZB-MR2
 Signal #1 Info : 30Mx0.32mmx 0.50µ Signal #2 Info : 30M x 0.32mm x 0.25µm

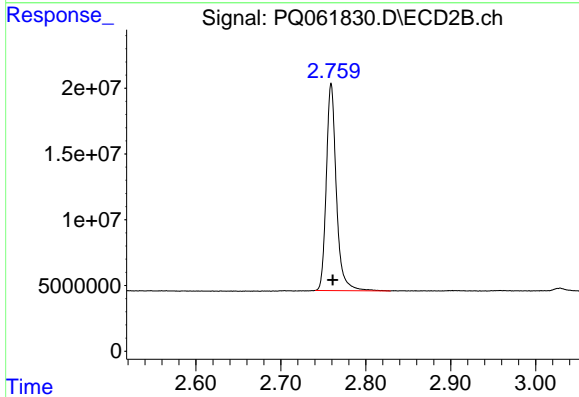




#1 Tetrachloro-m-xylene

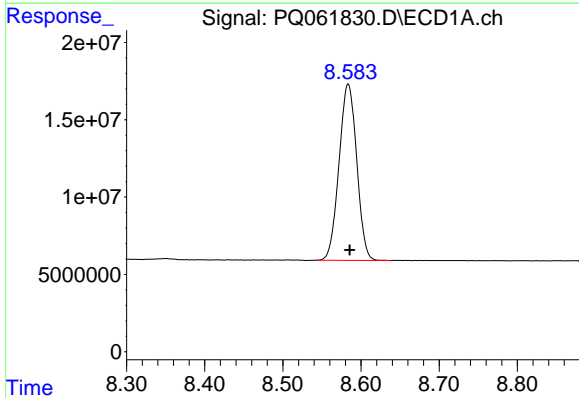
R.T.: 3.405 min
 Delta R.T.: 0.000 min
 Response: 245530887
 Conc: 54.62 ng/ml

Instrument :
 ECD_Q
 ClientSampleId :
 AR1248CCC500



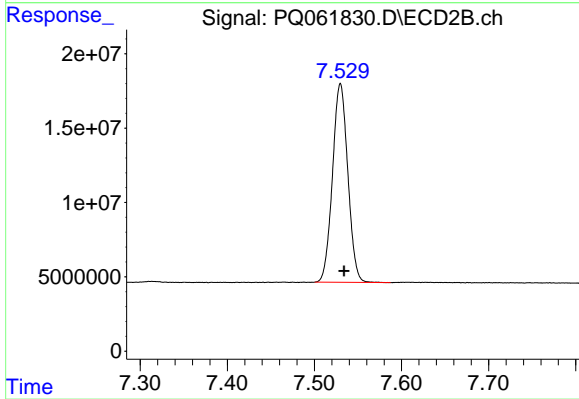
#1 Tetrachloro-m-xylene

R.T.: 2.759 min
 Delta R.T.: -0.002 min
 Response: 129303985
 Conc: 48.42 ng/ml



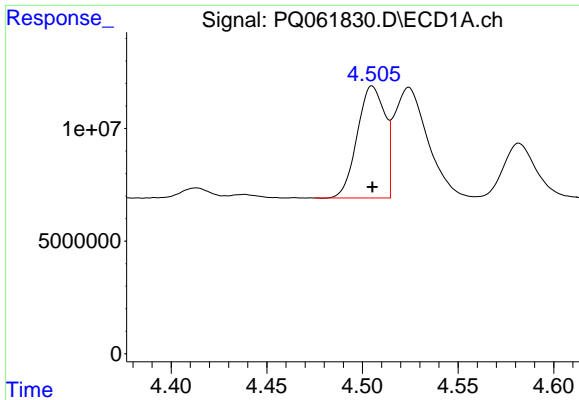
#2 Decachlorobiphenyl

R.T.: 8.584 min
 Delta R.T.: -0.002 min
 Response: 179634231
 Conc: 53.33 ng/ml



#2 Decachlorobiphenyl

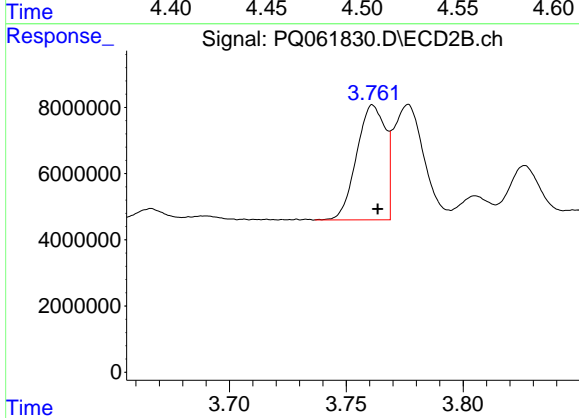
R.T.: 7.530 min
 Delta R.T.: -0.004 min
 Response: 163330387
 Conc: 48.66 ng/ml



#21 AR-1248-1

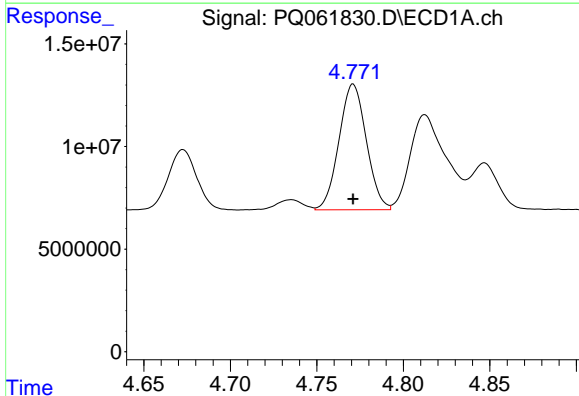
R.T.: 4.505 min
 Delta R.T.: 0.000 min
 Response: 49870983
 Conc: 553.48 ng/ml

Instrument :
 ECD_Q
 ClientSampleId :
 AR1248CCC500



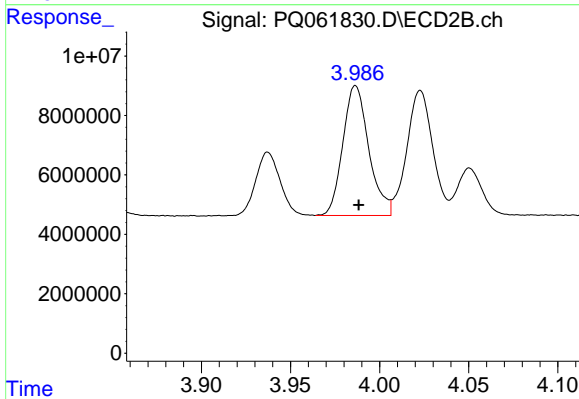
#21 AR-1248-1

R.T.: 3.761 min
 Delta R.T.: -0.002 min
 Response: 29625834
 Conc: 476.03 ng/ml



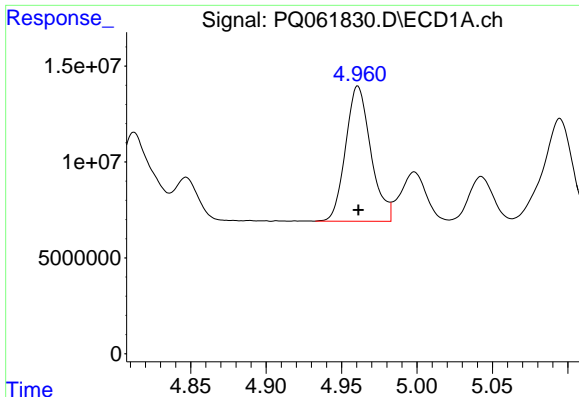
#22 AR-1248-2

R.T.: 4.771 min
 Delta R.T.: 0.000 min
 Response: 67225445
 Conc: 528.81 ng/ml



#22 AR-1248-2

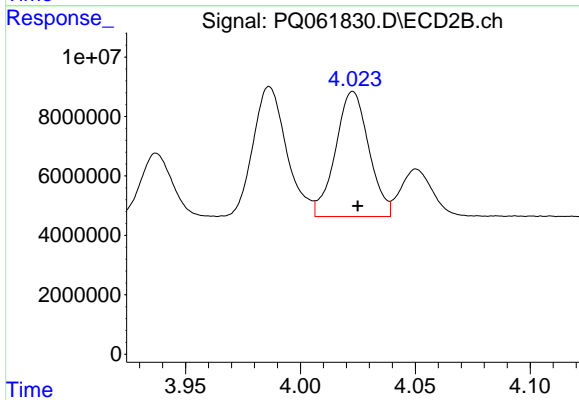
R.T.: 3.987 min
 Delta R.T.: -0.002 min
 Response: 44380811
 Conc: 459.16 ng/ml



#23 AR-1248-3

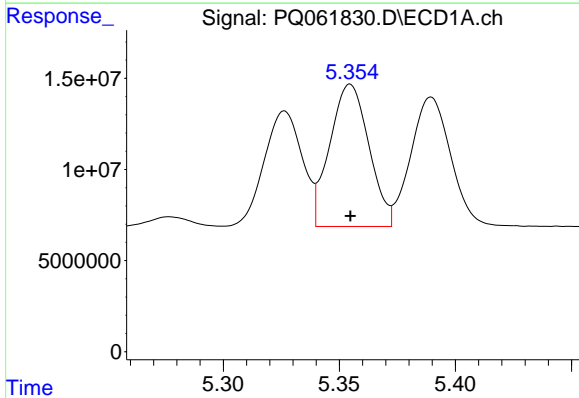
R.T.: 4.961 min
Delta R.T.: 0.000 min
Response: 82070971
Conc: 532.79 ng/ml

Instrument :
ECD_Q
ClientSampleId :
AR1248CCC500



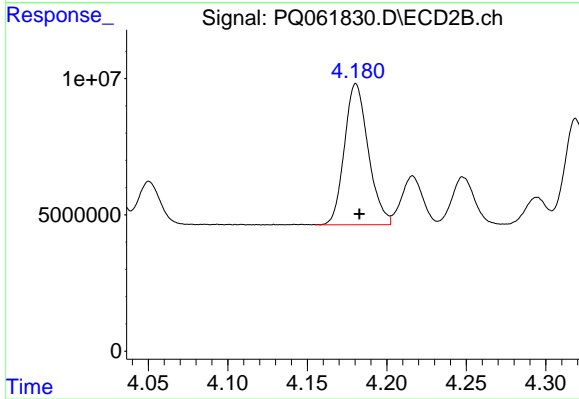
#23 AR-1248-3

R.T.: 4.023 min
Delta R.T.: -0.002 min
Response: 42507023
Conc: 465.00 ng/ml



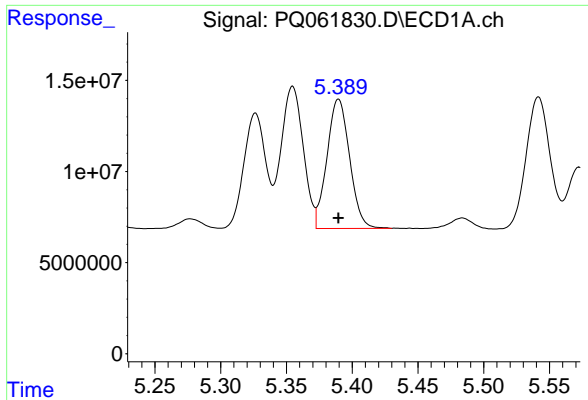
#24 AR-1248-4

R.T.: 5.355 min
Delta R.T.: 0.000 min
Response: 91552820
Conc: 539.34 ng/ml



#24 AR-1248-4

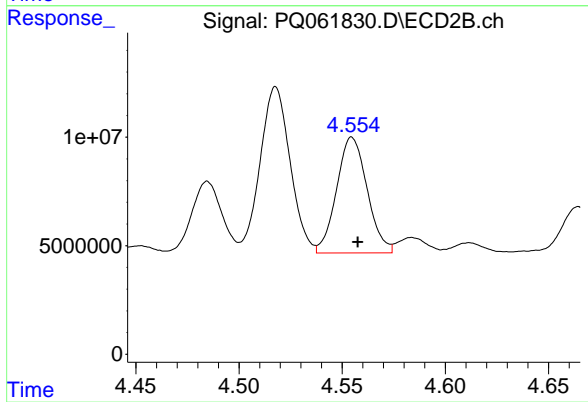
R.T.: 4.181 min
Delta R.T.: -0.002 min
Response: 54014172
Conc: 477.03 ng/ml



#25 AR-1248-5

R.T.: 5.390 min
Delta R.T.: 0.000 min
Response: 85060610
Conc: 519.20 ng/ml

Instrument :
ECD_Q
ClientSampleId :
AR1248CCC500



#25 AR-1248-5

R.T.: 4.555 min
Delta R.T.: -0.003 min
Response: 55019461
Conc: 499.56 ng/ml