

Data Path : Z:\pestpcbsrv\HPCHEM1\ECD_Q\Data\PQ063023\
 Data File : PQ061831.D
 Signal(s) : Signal #1: ECD1A.ch Signal #2: ECD2B.ch
 Acq On : 01 Jul 2023 01:07
 Operator : YP\AJ
 Sample : AR1254CCC500
 Misc :
 ALS Vial : 6 Sample Multiplier: 1

Instrument :
 ECD_Q
 ClientSampleId :
 AR1254CCC500

Integration File signal 1: autoint1.e
 Integration File signal 2: autoint2.e
 Quant Time: Jul 02 07:16:17 2023
 Quant Method : Z:\pestpcbsrv\HPCHEM1\ECD_Q\Method\PQ060923.M
 Quant Title : GC EXTRACTABLES
 QLast Update : Fri Jun 09 18:19:31 2023
 Response via : Initial Calibration
 Integrator: ChemStation

Volume Inj. : 2 µl
 Signal #1 Phase : ZB-MR1 Signal #2 Phase: ZB-MR2
 Signal #1 Info : 30Mx0.32mmx 0.50µ Signal #2 Info : 30M x 0.32mm x 0.25µm

| Compound | RT#1 | RT#2 | Resp#1 | Resp#2 | ng/ml | ng/ml |
|-----------------------------|-------|-------|----------|----------|---------|---------|
| ----- | | | | | | |
| System Monitoring Compounds | | | | | | |
| 1) SA Tetrachlo... | 3.405 | 2.759 | 249.9E6 | 130.8E6 | 55.605 | 48.992 |
| 2) SA Decachlor... | 8.582 | 7.529 | 185.4E6 | 168.2E6 | 55.051 | 50.109 |
| Target Compounds | | | | | | |
| 26) L6 AR-1254-1 | 5.327 | 4.516 | 91701557 | 81091328 | 536.890 | 493.118 |
| 27) L6 AR-1254-2 | 5.544 | 4.663 | 143.7E6 | 72843036 | 537.469 | 484.309 |
| 28) L6 AR-1254-3 | 5.898 | 5.044 | 152.5E6 | 116.0E6 | 545.809 | 498.535 |
| 29) L6 AR-1254-4 | 6.182 | 5.271 | 115.5E6 | 74167592 | 564.272 | 516.234 |
| 30) L6 AR-1254-5 | 6.595 | 5.676 | 127.3E6 | 115.1E6 | 539.621 | 504.514 |
| ----- | | | | | | |

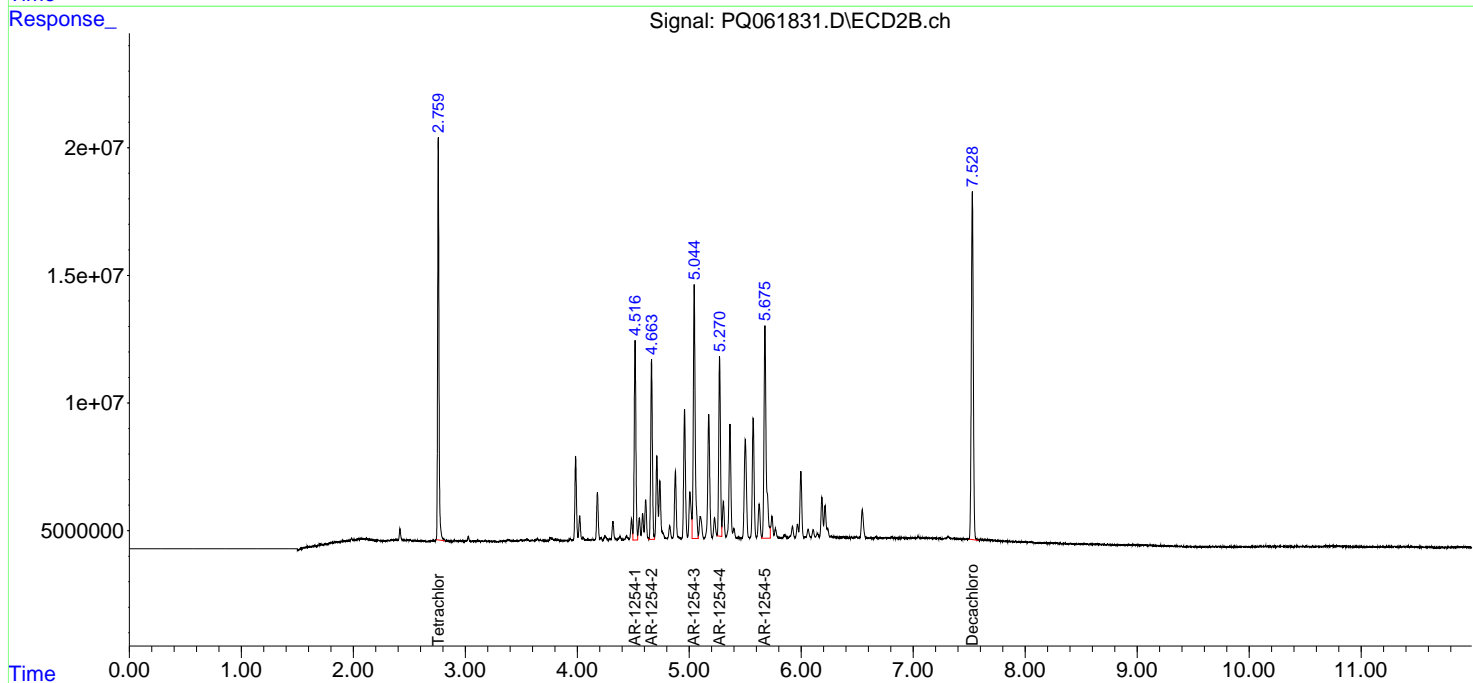
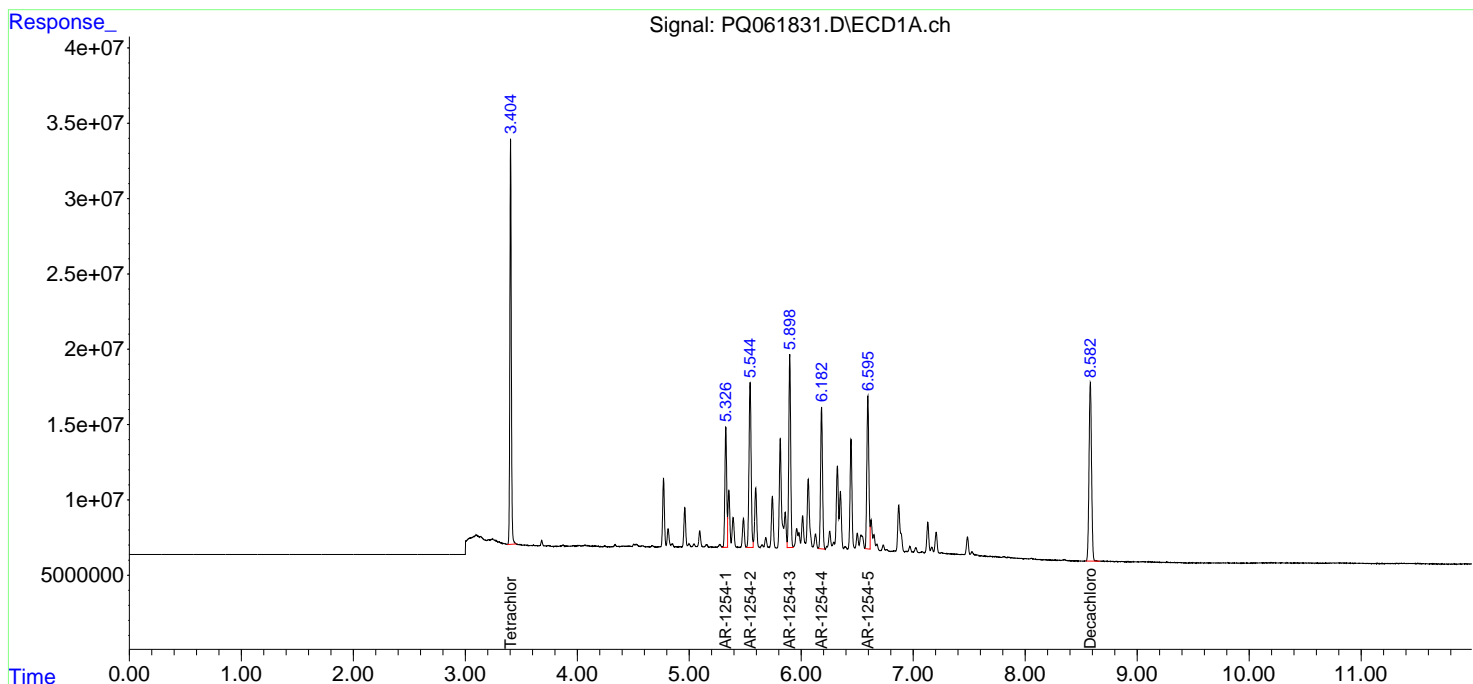
(f)=RT Delta > 1/2 Window (#)=Amounts differ by > 25% (m)=manual int.

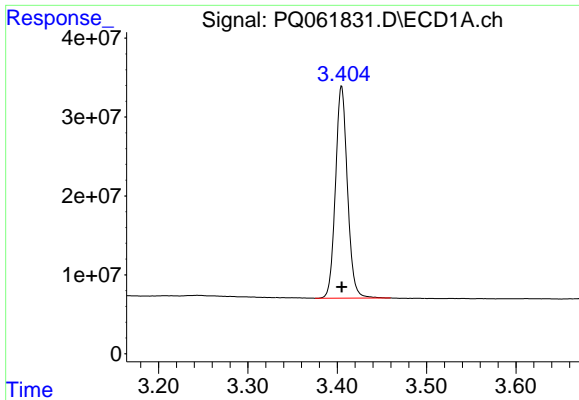
Data Path : Z:\pestpcbsrv\HPCHEM1\ECD_Q\Data\PQ063023\
 Data File : PQ061831.D
 Signal(s) : Signal #1: ECD1A.ch Signal #2: ECD2B.ch
 Acq On : 01 Jul 2023 01:07
 Operator : YP\AJ
 Sample : AR1254CCC500
 Misc :
 ALS Vial : 6 Sample Multiplier: 1

Instrument :
 ECD_Q
 ClientSampleId :
 AR1254CCC500

Integration File signal 1: autoint1.e
 Integration File signal 2: autoint2.e
 Quant Time: Jul 02 07:16:17 2023
 Quant Method : Z:\pestpcbsrv\HPCHEM1\ECD_Q\Method\PQ060923.M
 Quant Title : GC EXTRACTABLES
 QLast Update : Fri Jun 09 18:19:31 2023
 Response via : Initial Calibration
 Integrator: ChemStation

Volume Inj. : 2 µl
 Signal #1 Phase : ZB-MR1 Signal #2 Phase: ZB-MR2
 Signal #1 Info : 30Mx0.32mmx 0.50µ Signal #2 Info : 30M x 0.32mm x 0.25µm

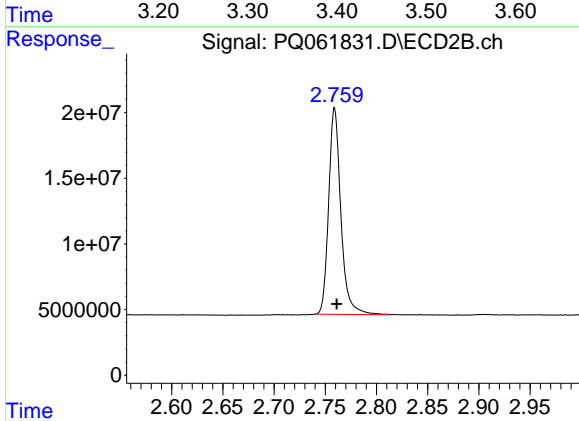




#1 Tetrachloro-m-xylene

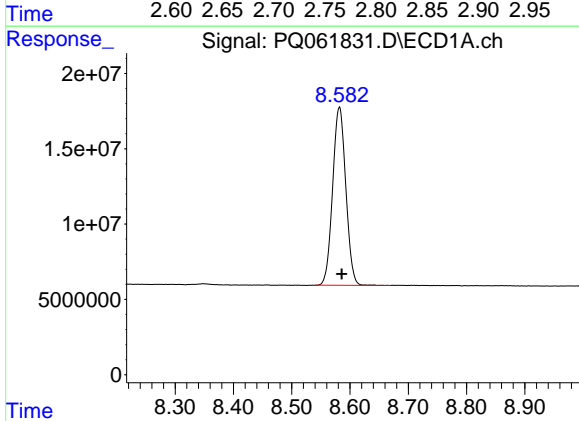
R.T.: 3.405 min
 Delta R.T.: 0.000 min
 Response: 249946993
 Conc: 55.61 ng/ml

Instrument :
 ECD_Q
 ClientSampleId :
 AR1254CCC500



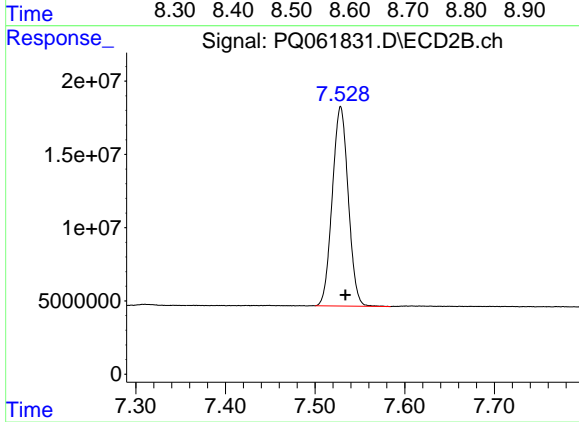
#1 Tetrachloro-m-xylene

R.T.: 2.759 min
 Delta R.T.: -0.002 min
 Response: 130825238
 Conc: 48.99 ng/ml



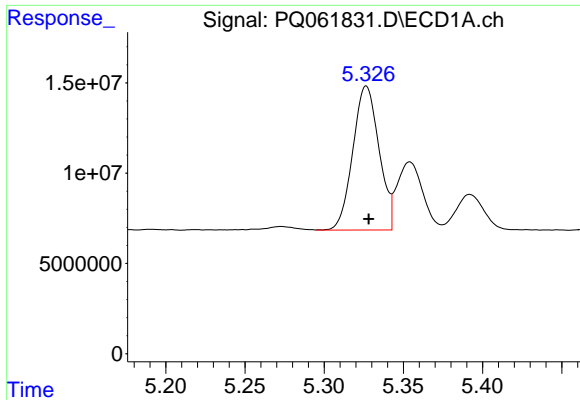
#2 Decachlorobiphenyl

R.T.: 8.582 min
 Delta R.T.: -0.004 min
 Response: 185446461
 Conc: 55.05 ng/ml



#2 Decachlorobiphenyl

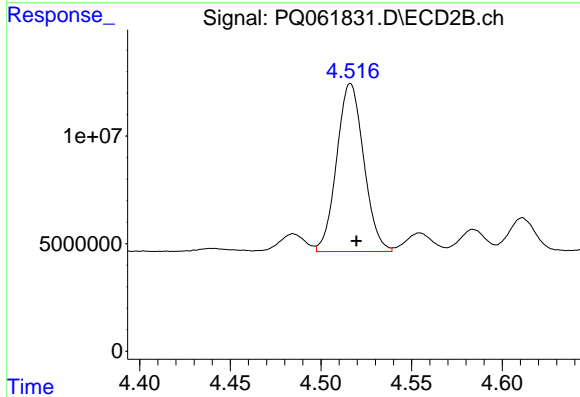
R.T.: 7.529 min
 Delta R.T.: -0.005 min
 Response: 168191713
 Conc: 50.11 ng/ml



#26 AR-1254-1

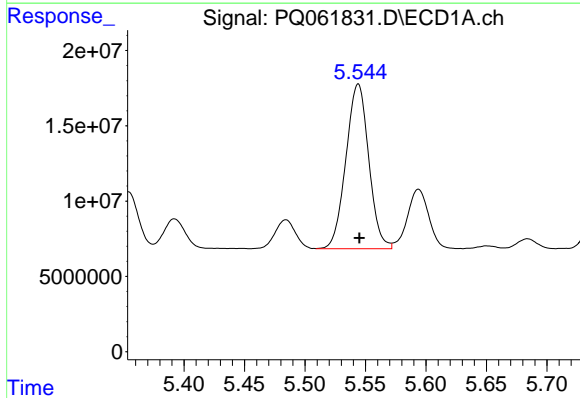
R.T.: 5.327 min
 Delta R.T.: -0.001 min
 Response: 91701557
 Conc: 536.89 ng/ml

Instrument :
 ECD_Q
 ClientSampleId :
 AR1254CCC500



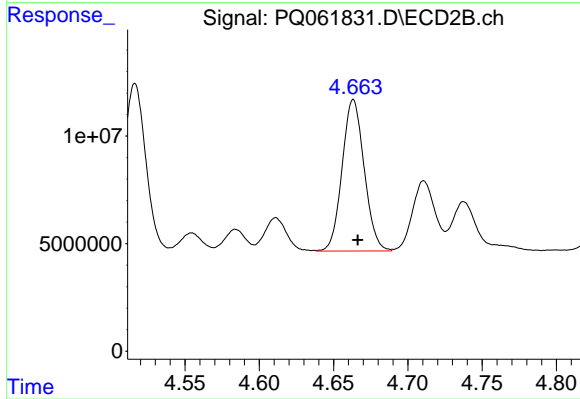
#26 AR-1254-1

R.T.: 4.516 min
 Delta R.T.: -0.003 min
 Response: 81091328
 Conc: 493.12 ng/ml



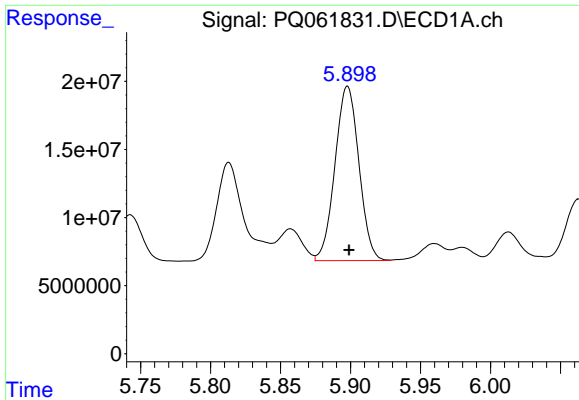
#27 AR-1254-2

R.T.: 5.544 min
 Delta R.T.: 0.000 min
 Response: 143710918
 Conc: 537.47 ng/ml



#27 AR-1254-2

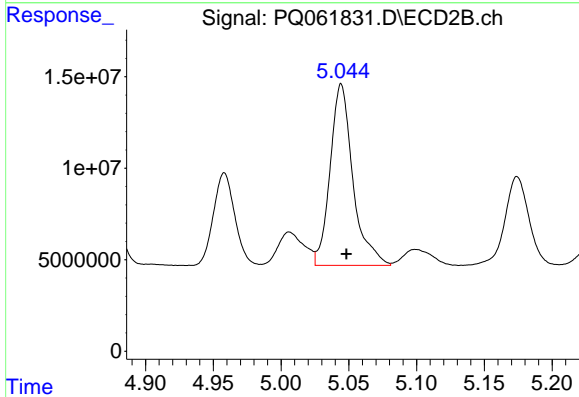
R.T.: 4.663 min
 Delta R.T.: -0.003 min
 Response: 72843036
 Conc: 484.31 ng/ml



#28 AR-1254-3

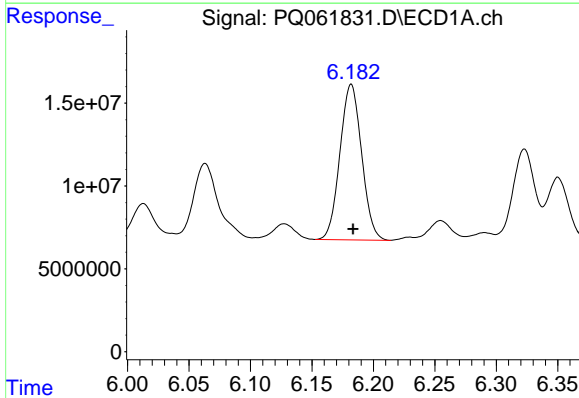
R.T.: 5.898 min
 Delta R.T.: -0.001 min
 Response: 152522606
 Conc: 545.81 ng/ml

Instrument :
 ECD_Q
 ClientSampleId :
 AR1254CCC500



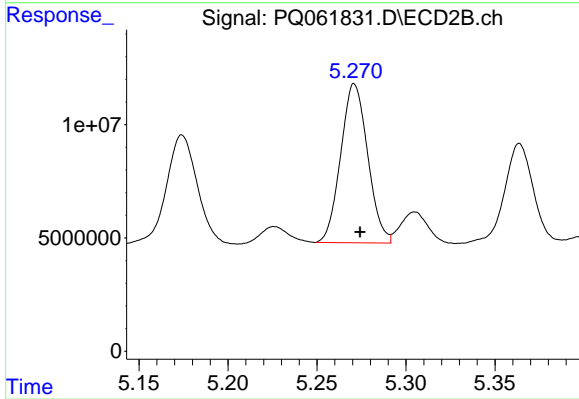
#28 AR-1254-3

R.T.: 5.044 min
 Delta R.T.: -0.004 min
 Response: 116008392
 Conc: 498.54 ng/ml



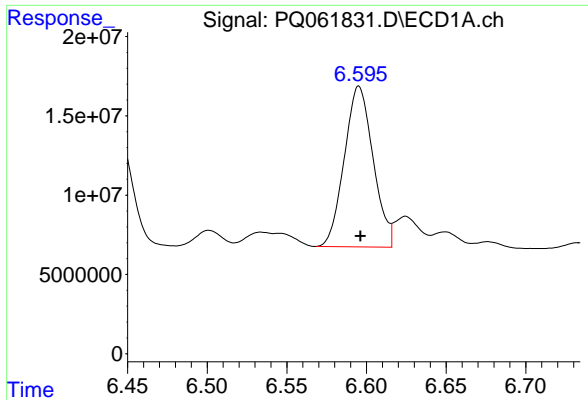
#29 AR-1254-4

R.T.: 6.182 min
 Delta R.T.: -0.001 min
 Response: 115497688
 Conc: 564.27 ng/ml



#29 AR-1254-4

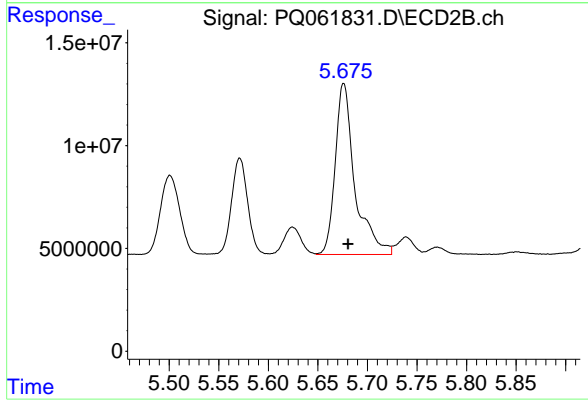
R.T.: 5.271 min
 Delta R.T.: -0.003 min
 Response: 74167592
 Conc: 516.23 ng/ml



#30 AR-1254-5

R.T.: 6.595 min
 Delta R.T.: 0.000 min
 Response: 127287686
 Conc: 539.62 ng/ml

Instrument :
 ECD_Q
 ClientSampleId :
 AR1254CCC500



#30 AR-1254-5

R.T.: 5.676 min
 Delta R.T.: -0.004 min
 Response: 115084751
 Conc: 504.51 ng/ml