

Data Path : Z:\pestpcbsrv\HPCHEM1\ECD\_Q\Data\PQ070323\  
 Data File : PQ061874.D  
 Signal(s) : Signal #1: ECD1A.ch Signal #2: ECD2B.ch  
 Acq On : 03 Jul 2023 11:48  
 Operator : YP\AJ  
 Sample : PB153942BL  
 Misc :  
 ALS Vial : 7 Sample Multiplier: 1

**Instrument :**  
 ECD\_Q  
**ClientSampleId :**  
 PB153942BL

Integration File signal 1: autoint1.e  
 Integration File signal 2: autoint2.e  
 Quant Time: Jul 04 05:44:29 2023  
 Quant Method : Z:\pestpcbsrv\HPCHEM1\ECD\_Q\Method\PQ070123.M  
 Quant Title : GC EXTRACTABLES  
 QLast Update : Tue Jul 04 05:32:27 2023  
 Response via : Initial Calibration  
 Integrator: ChemStation

Volume Inj. : 2 µl  
 Signal #1 Phase : ZB-MR1 Signal #2 Phase: ZB-MR2  
 Signal #1 Info : 30Mx0.32mmx 0.50µ Signal #2 Info : 30M x 0.32mm x 0.25µm

Compound	RT#1	RT#2	Resp#1	Resp#2	ng/ml	ng/ml
-----						
System Monitoring Compounds						
1) SA Tetrachlo...	3.413	2.757	103.3E6	53239420	21.178	21.218
2) SA Decachlor...	8.601	7.533	74861784	70940143	20.607	21.289

Target Compounds

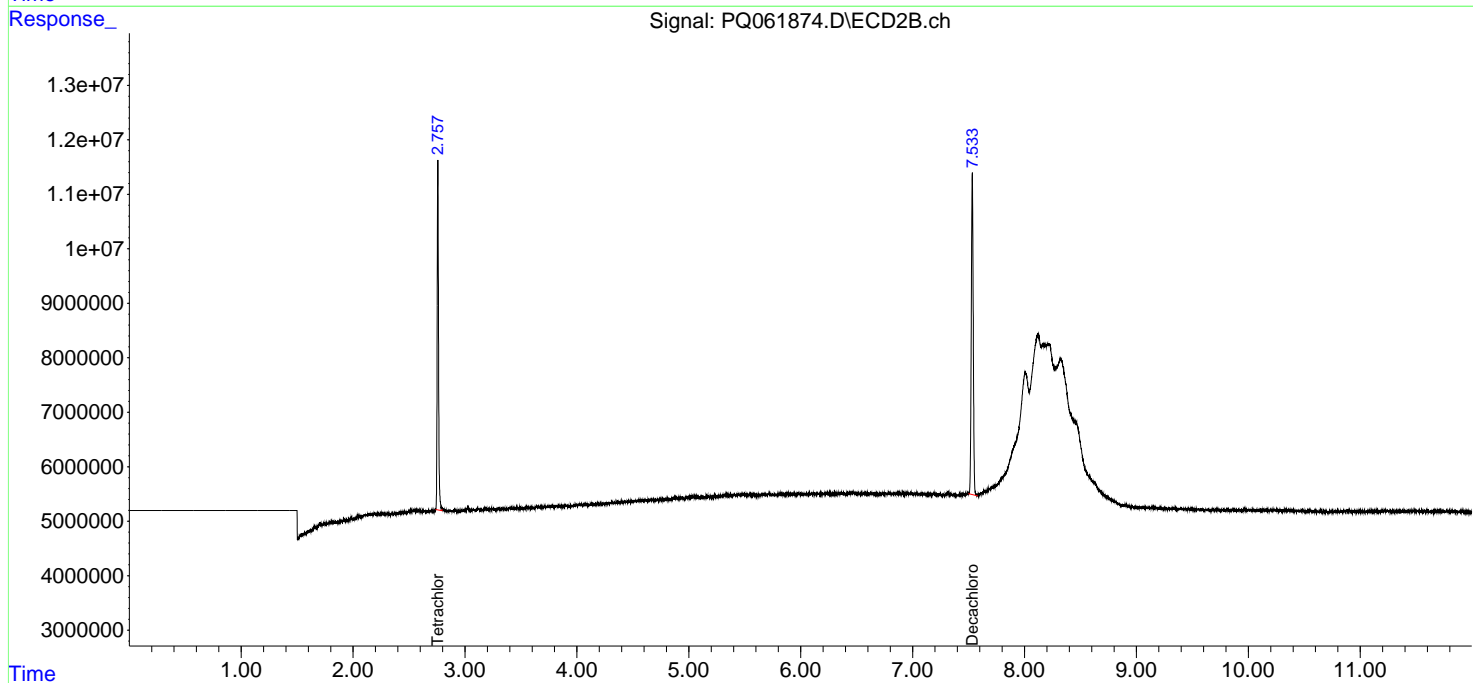
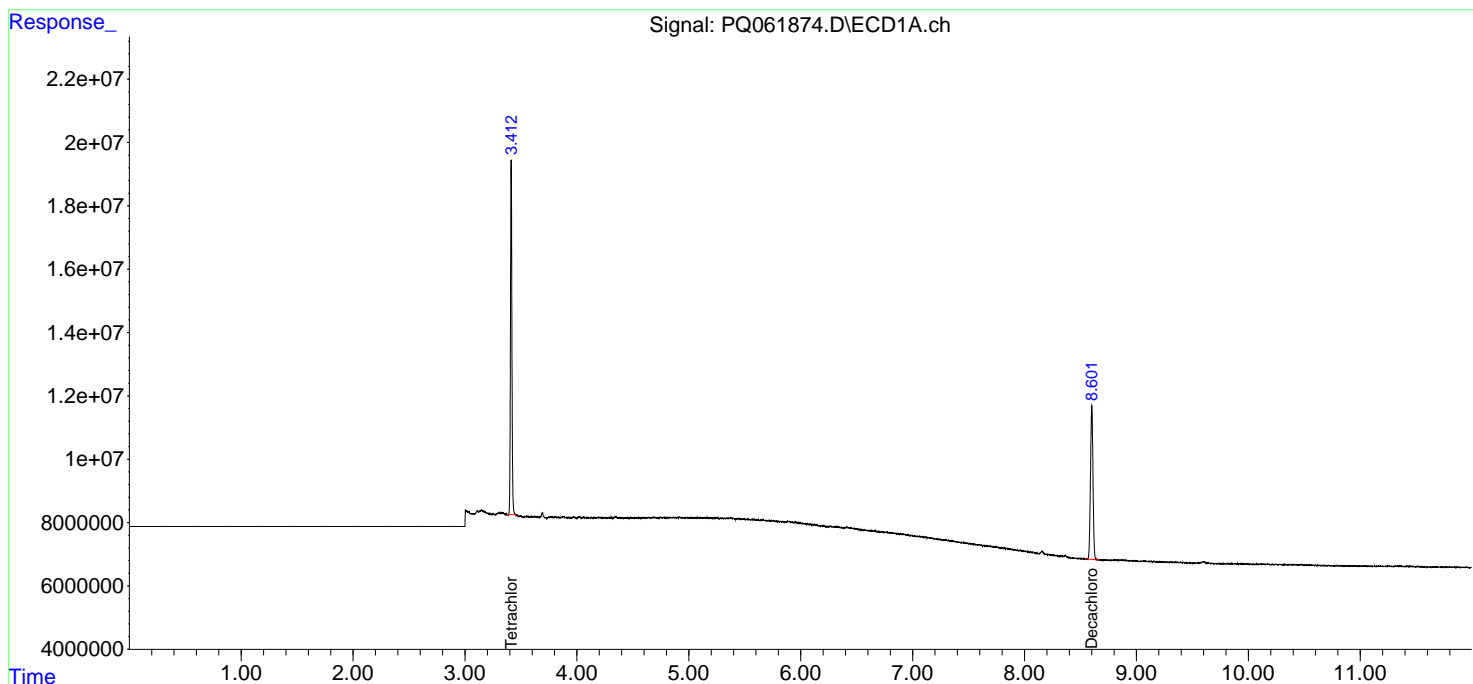
-----  
 (f)=RT Delta > 1/2 Window (#)=Amounts differ by > 25% (m)=manual int.

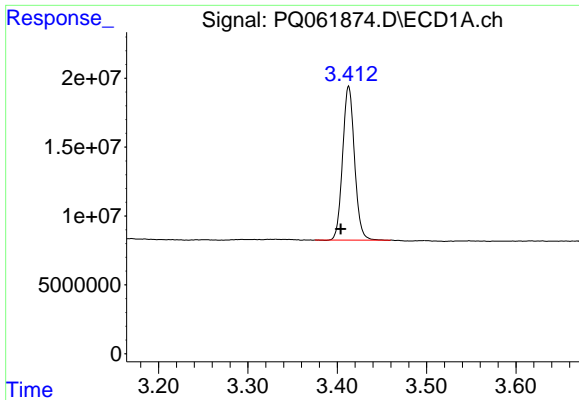
Data Path : Z:\pestpcbsrv\HPCHEM1\ECD\_Q\Data\PQ070323\  
 Data File : PQ061874.D  
 Signal(s) : Signal #1: ECD1A.ch Signal #2: ECD2B.ch  
 Acq On : 03 Jul 2023 11:48  
 Operator : YP\AJ  
 Sample : PB153942BL  
 Misc :  
 ALS Vial : 7 Sample Multiplier: 1

**Instrument :**  
 ECD\_Q  
**ClientSampleId :**  
 PB153942BL

Integration File signal 1: autoint1.e  
 Integration File signal 2: autoint2.e  
 Quant Time: Jul 04 05:44:29 2023  
 Quant Method : Z:\pestpcbsrv\HPCHEM1\ECD\_Q\Method\PQ070123.M  
 Quant Title : GC EXTRACTABLES  
 QLast Update : Tue Jul 04 05:32:27 2023  
 Response via : Initial Calibration  
 Integrator: ChemStation

Volume Inj. : 2 µl  
 Signal #1 Phase : ZB-MR1 Signal #2 Phase: ZB-MR2  
 Signal #1 Info : 30Mx0.32mmx 0.50µ Signal #2 Info : 30M x 0.32mm x 0.25µm

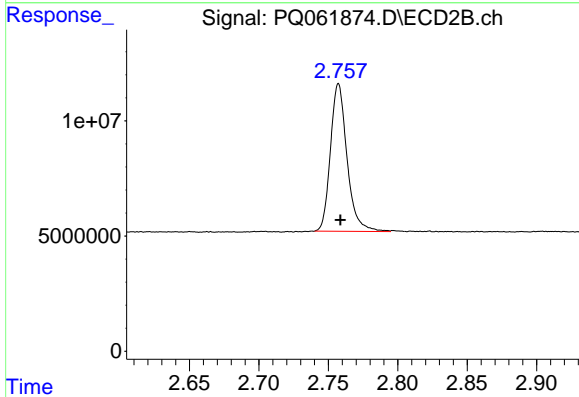




#1 Tetrachloro-m-xylene

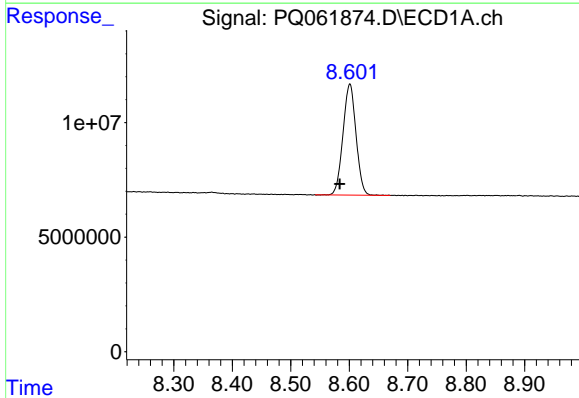
R.T.: 3.413 min  
 Delta R.T.: 0.009 min  
 Response: 103311134  
 Conc: 21.18 ng/ml

Instrument :  
 ECD\_Q  
 ClientSampleId :  
 PB153942BL



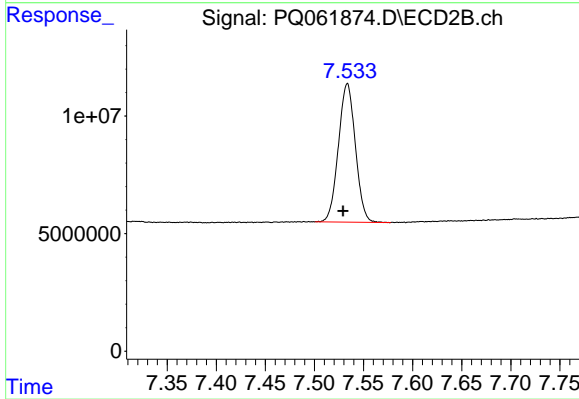
#1 Tetrachloro-m-xylene

R.T.: 2.757 min  
 Delta R.T.: -0.001 min  
 Response: 53239420  
 Conc: 21.22 ng/ml



#2 Decachlorobiphenyl

R.T.: 8.601 min  
 Delta R.T.: 0.017 min  
 Response: 74861784  
 Conc: 20.61 ng/ml



#2 Decachlorobiphenyl

R.T.: 7.533 min  
 Delta R.T.: 0.004 min  
 Response: 70940143  
 Conc: 21.29 ng/ml