

Data Path : Z:\pestpcbsrv\HPCHEM1\ECD\_Q\Data\PQ070418\  
 Data File : PQ030321.D  
 Signal(s) : Signal #1: ECD1A.ch Signal #2: ECD2B.ch  
 Acq On : 02 Jul 2018 17:51  
 Operator : UA/SM  
 Sample : J3748-15DL 10000X  
 Misc :  
 ALS Vial : 9 Sample Multiplier: 1

**Instrument :**  
 ECD\_Q  
**ClientSampled :**  
 C0AW2DL

**Manual Integrations**  
**APPROVED**  
 mohammad  
 7/3/2018 4:19:56 PM

Integration File signal 1: autoint1.e  
 Integration File signal 2: autoint2.e  
 Quant Time: Jul 02 18:44:28 2018  
 Quant Method : \\TERASTORAGE\Terastorage\pestpcbsrv\HPCHEM1\ECD\_Q\Method\PQ062918.M  
 Quant Title : GC EXTRACTABLES  
 QLast Update : Fri Jun 29 01:53:51 2018  
 Response via : Initial Calibration  
 Integrator: ChemStation

Volume Inj. : 2 µl  
 Signal #1 Phase : ZB-MR1 Signal #2 Phase: ZB-MR2  
 Signal #1 Info : 30Mx0.32mmx 0.50µ Signal #2 Info : 30M x 0.32mm x 0.25µm

Compound	RT#1	RT#2	Resp#1	Resp#2	ng/ml	ng/ml
----------	------	------	--------	--------	-------	-------

System Monitoring Compounds

Target Compounds

26)	L6	AR-1254-1	6.445	5.570	29816.5E6	18143.9E6	13664.399m	20277.340 #
27)	L6	AR-1254-2	6.670	5.715	38427.2E6	17262.9E6	14848.214	23008.773 #
28)	L6	AR-1254-3	7.035	6.117	36979.6E6	27704.7E6	13163.175	21792.996 #
29)	L6	AR-1254-4	7.315	6.343	33489.2E6	18826.5E6	16816.641	21471.973 #
30)	L6	AR-1254-5	7.731	6.584	38545.2E6	14522.8E6	15551.427	27448.156 #

(f)=RT Delta > 1/2 Window (#)=Amounts differ by > 25% (m)=manual int.

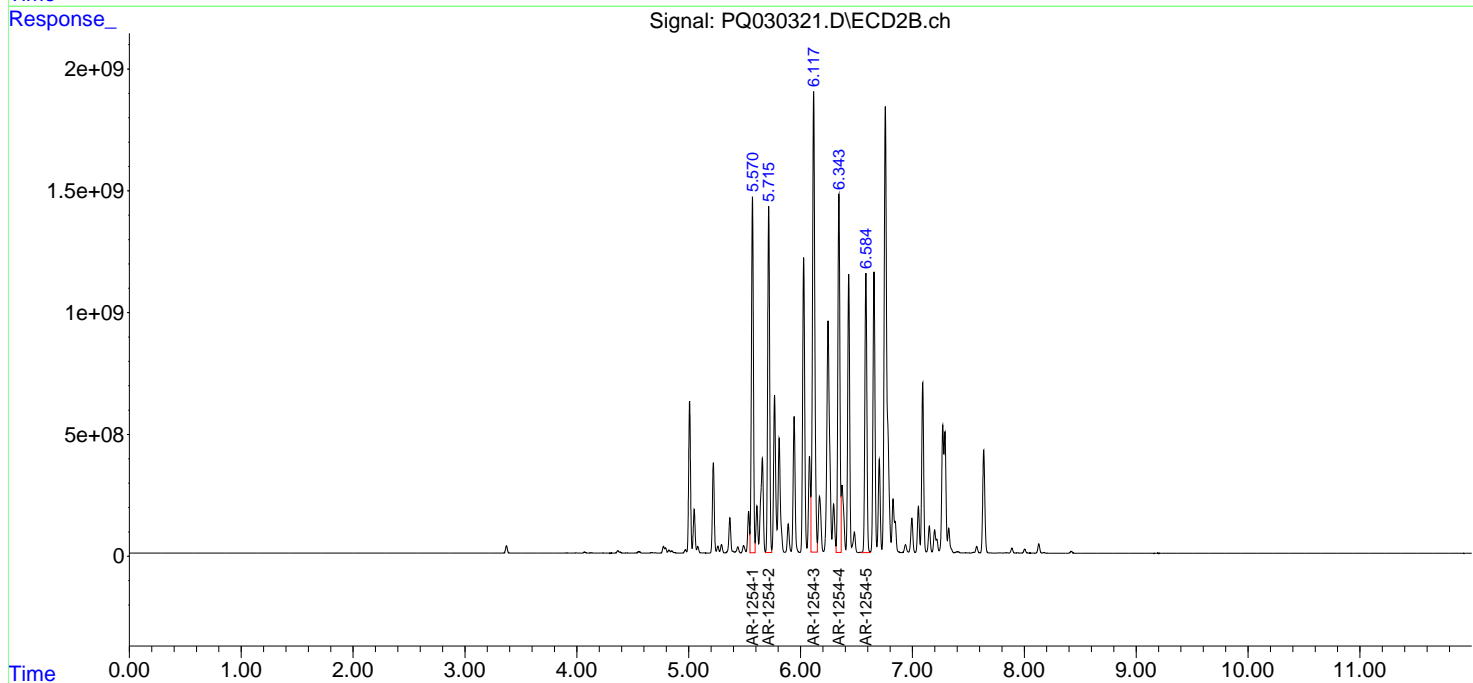
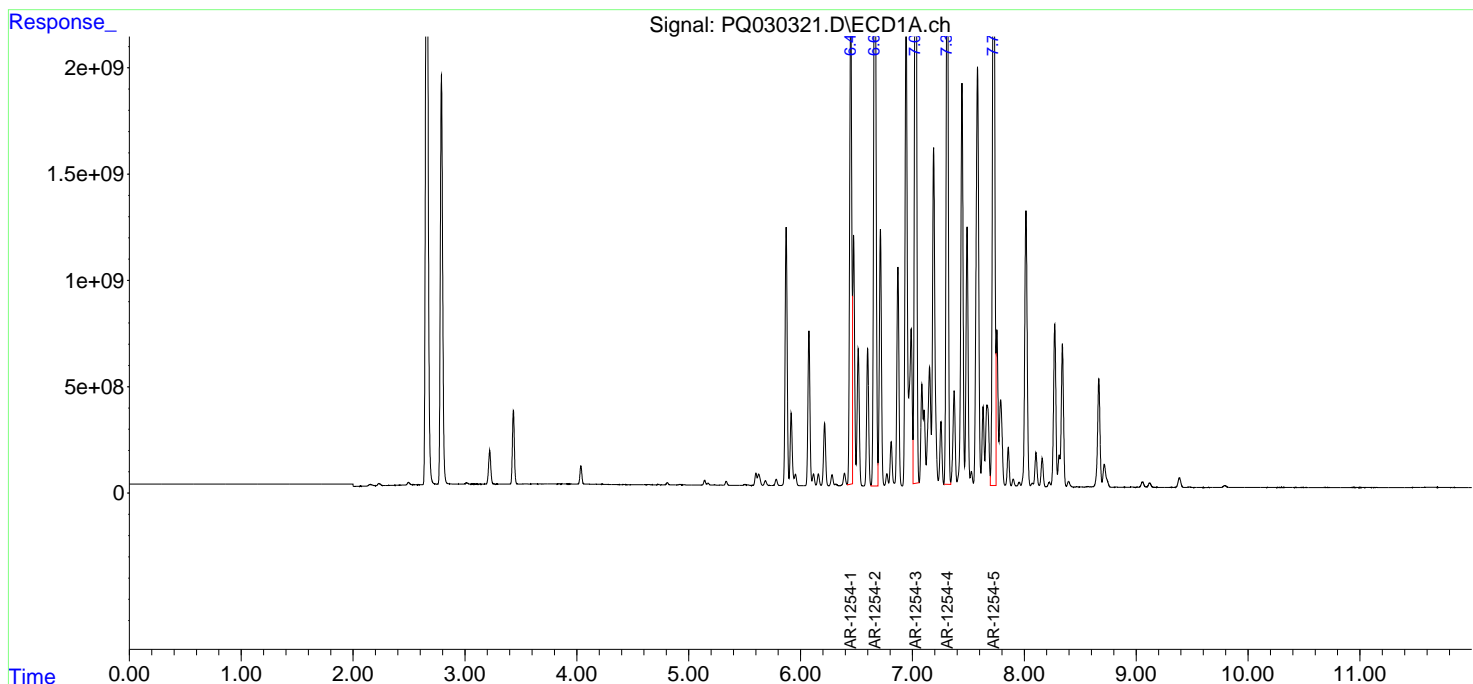
Data Path : Z:\pestpcbsrv\HPCHEM1\ECD\_Q\Data\PQ070418\  
 Data File : PQ030321.D  
 Signal(s) : Signal #1: ECD1A.ch Signal #2: ECD2B.ch  
 Acq On : 02 Jul 2018 17:51  
 Operator : UA/SM  
 Sample : J3748-15DL 10000X  
 Misc :  
 ALS Vial : 9 Sample Multiplier: 1

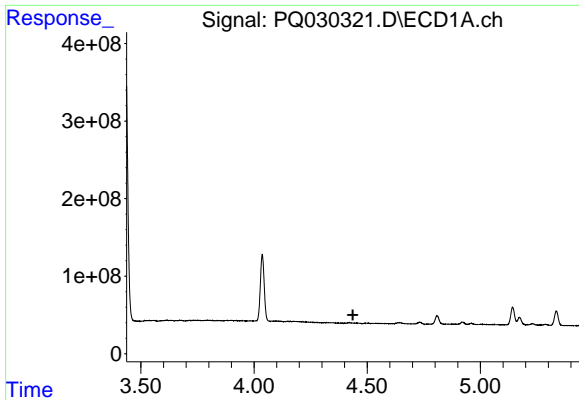
**Instrument :**  
 ECD\_Q  
**Client Sampled :**  
 C0AW2DL

**Manual Integrations**  
**APPROVED**  
 mohammad  
 7/3/2018 4:19:56 PM

Integration File signal 1: autoint1.e  
 Integration File signal 2: autoint2.e  
 Quant Time: Jul 02 18:44:28 2018  
 Quant Method : \\TERASTORAGE\Terastorage\pestpcbsrv\HPCHEM1\ECD\_Q\Method\PQ062918.M  
 Quant Title : GC EXTRACTABLES  
 QLast Update : Fri Jun 29 01:53:51 2018  
 Response via : Initial Calibration  
 Integrator: ChemStation

Volume Inj. : 2 µl  
 Signal #1 Phase : ZB-MR1 Signal #2 Phase: ZB-MR2  
 Signal #1 Info : 30Mx0.32mmx 0.50µ Signal #2 Info : 30M x 0.32mm x 0.25µm





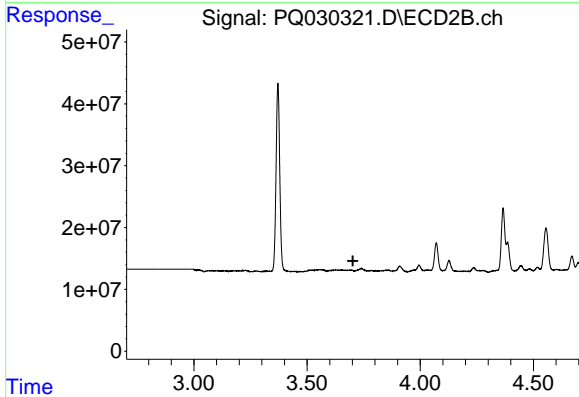
#1 Tetrachloro-m-xylene

R.T.: 0.000 min  
 Exp R.T. : 4.437 min  
 Response: 0  
 Conc: N.D.

Instrument :  
 ECD\_Q  
 ClientSampled :  
 C0AW2DL

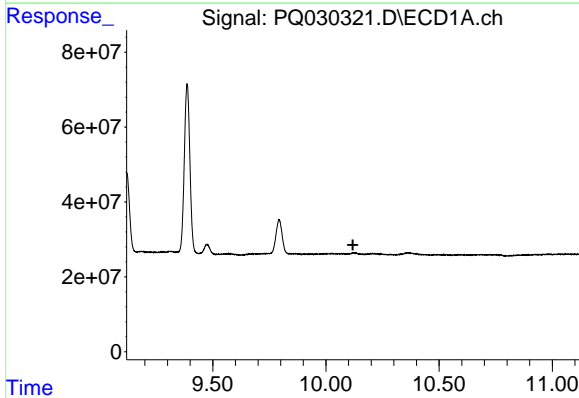
Manual Integrations  
 APPROVED

mohammad  
 7/3/2018 4:19:56 PM



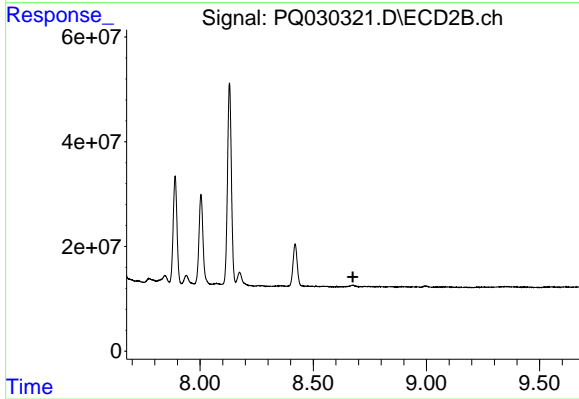
#1 Tetrachloro-m-xylene

R.T.: 0.000 min  
 Exp R.T. : 3.703 min  
 Response: 0  
 Conc: N.D.



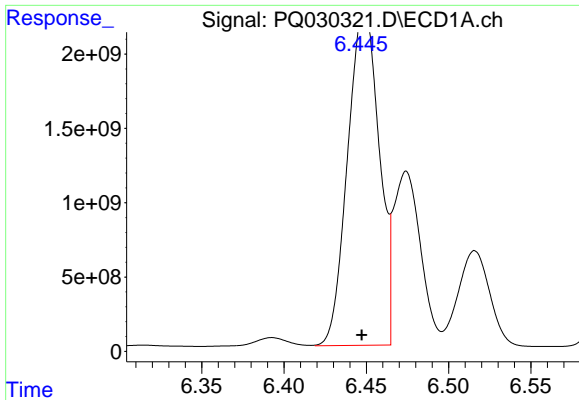
#2 Decachlorobiphenyl

R.T.: 0.000 min  
 Exp R.T. : 10.119 min  
 Response: 0  
 Conc: N.D.



#2 Decachlorobiphenyl

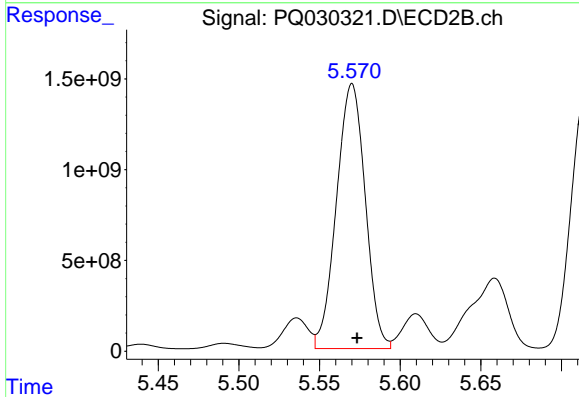
R.T.: 0.000 min  
 Exp R.T. : 8.675 min  
 Response: 0  
 Conc: N.D.



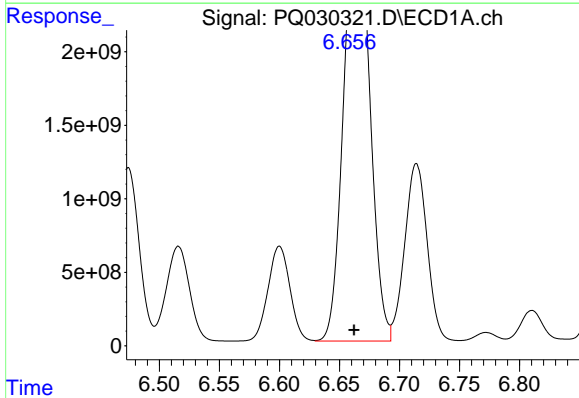
#26 AR-1254-1  
 R.T.: 6.445 min  
 Delta R.T.: -0.002 min  
 Response: 29816535866  
 Conc: 13664.40 ng/ml m

**Instrument :**  
 ECD\_Q  
**ClientSampled :**  
 C0AW2DL

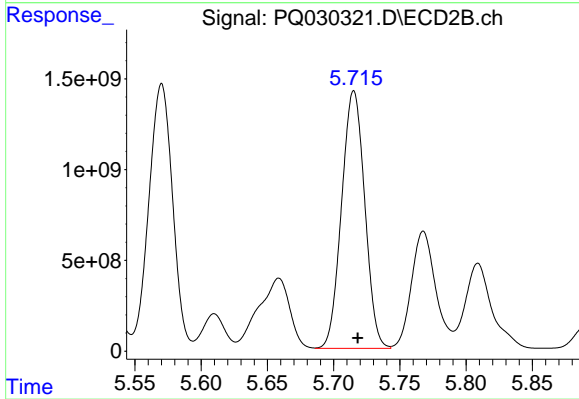
**Manual Integrations**  
**APPROVED**  
 mohammad  
 7/3/2018 4:19:56 PM



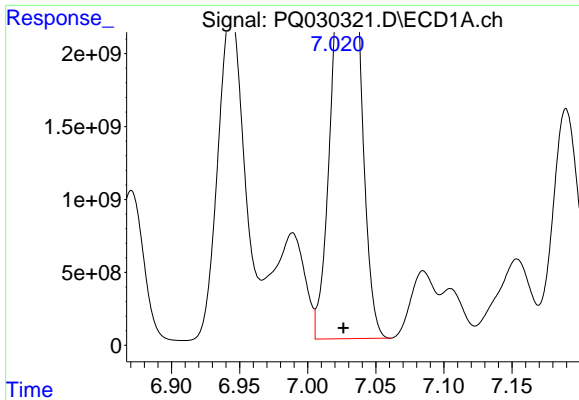
#26 AR-1254-1  
 R.T.: 5.570 min  
 Delta R.T.: -0.003 min  
 Response: 18143850174  
 Conc: 20277.34 ng/ml



#27 AR-1254-2  
 R.T.: 6.670 min  
 Delta R.T.: 0.008 min  
 Response: 38427217316  
 Conc: 14848.21 ng/ml



#27 AR-1254-2  
 R.T.: 5.715 min  
 Delta R.T.: -0.003 min  
 Response: 17262946110  
 Conc: 23008.77 ng/ml

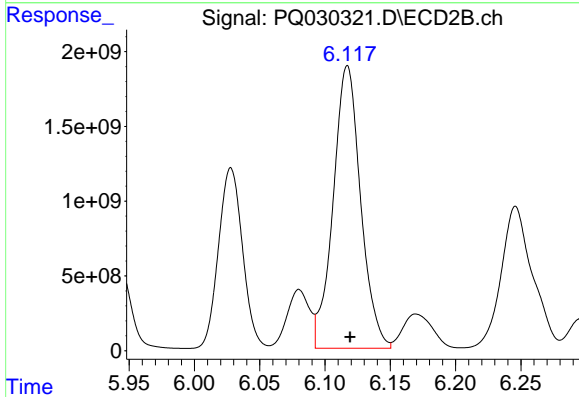


#28 AR-1254-3

R.T.: 7.035 min  
 Delta R.T.: 0.008 min  
 Response: 36979611988  
 Conc: 13163.18 ng/ml

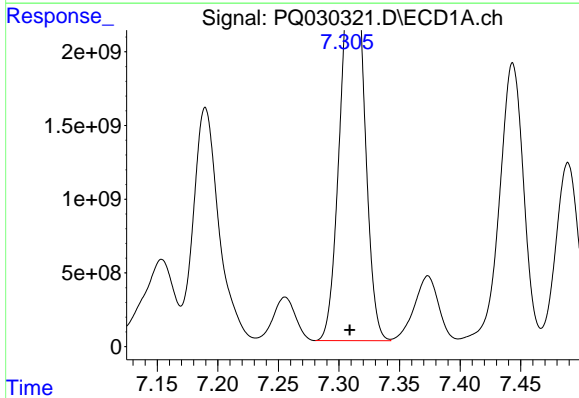
**Instrument :**  
 ECD\_Q  
**ClientSampled :**  
 C0AW2DL

**Manual Integrations**  
**APPROVED**  
 mohammad  
 7/3/2018 4:19:56 PM



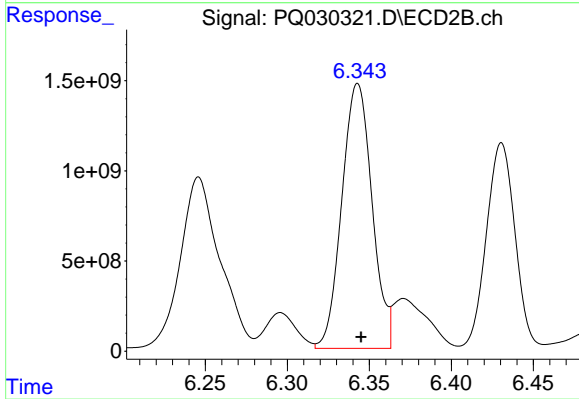
#28 AR-1254-3

R.T.: 6.117 min  
 Delta R.T.: -0.002 min  
 Response: 27704702292  
 Conc: 21793.00 ng/ml



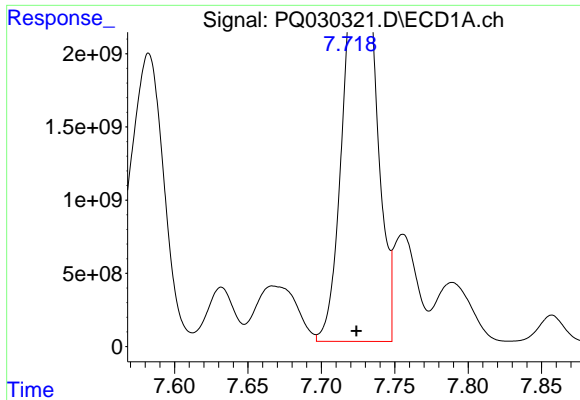
#29 AR-1254-4

R.T.: 7.315 min  
 Delta R.T.: 0.006 min  
 Response: 33489224338  
 Conc: 16816.64 ng/ml



#29 AR-1254-4

R.T.: 6.343 min  
 Delta R.T.: -0.002 min  
 Response: 18826458802  
 Conc: 21471.97 ng/ml



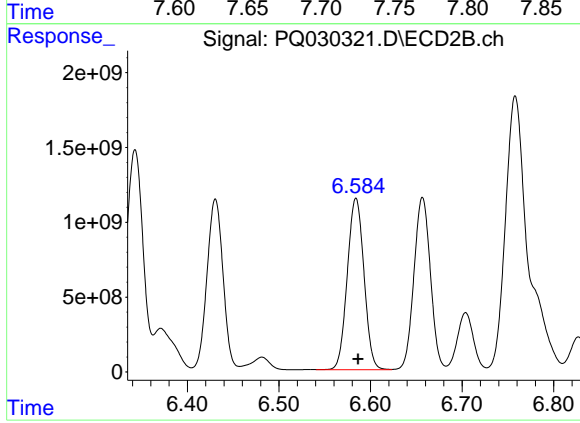
#30 AR-1254-5

R.T.: 7.731 min  
Delta R.T.: 0.007 min  
Response: 38545245335  
Conc: 15551.43 ng/ml

Instrument :  
ECD\_Q  
ClientSampleId :  
C0AW2DL

Manual Integrations  
APPROVED

mohammad  
7/3/2018 4:19:56 PM



#30 AR-1254-5

R.T.: 6.584 min  
Delta R.T.: -0.002 min  
Response: 14522782384  
Conc: 27448.16 ng/ml