

Data Path : Z:\pestpcbsrv\HPCHEM1\ECD_Q\Data\PQ070618\
 Data File : PQ030455.D
 Signal(s) : Signal #1: ECD1A.ch Signal #2: ECD2B.ch
 Acq On : 06 Jul 2018 02:17
 Operator : UA/SM
 Sample : AR1660CCC500
 Misc :
 ALS Vial : 3 Sample Multiplier: 1

Instrument :
 ECD_Q
ClientSampleId :
 AR1660CCC500

Manual Integrations
APPROVED
 mohammad
 7/6/2018 12:31:17 PM

Integration File signal 1: autoint1.e
 Integration File signal 2: autoint2.e
 Quant Time: Jul 06 03:02:32 2018
 Quant Method : \\TERASTORAGE\Terastorage\pestpcbsrv\HPCHEM1\ECD_Q\Method\PQ062918.M
 Quant Title : GC EXTRACTABLES
 QLast Update : Fri Jun 29 01:53:51 2018
 Response via : Initial Calibration
 Integrator: ChemStation

Volume Inj. : 2 µl
 Signal #1 Phase : ZB-MR1 Signal #2 Phase: ZB-MR2
 Signal #1 Info : 30Mx0.32mmx 0.50µ Signal #2 Info : 30M x 0.32mm x 0.25µm

Compound	RT#1	RT#2	Resp#1	Resp#2	ng/ml	ng/ml

System Monitoring Compounds						
1) SA Tetrachlo...	4.433	3.701	3146.9E6	1079.2E6	74.972	78.420
2) SA Decachlor...	10.107	8.667	1943.3E6	1266.3E6	55.001	62.023
Target Compounds						
3) L1 AR-1016-1	4.804	4.557	435.3E6	237.9E6	623.181	628.425
4) L1 AR-1016-2	5.329	4.969	618.2E6	234.2E6	657.022	605.664
5) L1 AR-1016-3	5.678	5.009	768.3E6	179.6E6	584.714m	589.755
6) L1 AR-1016-4	5.777	5.051	659.6E6	238.7E6	598.139m	584.163
7) L1 AR-1016-5	6.208	5.221	669.9E6	222.9E6	609.191	535.770
31) L7 AR-1260-1	7.181	6.243	1262.0E6	567.4E6	629.205	570.375m
32) L7 AR-1260-2	7.434	6.582	1324.5E6	665.6E6	558.094	580.195m
33) L7 AR-1260-3	7.716	7.051	1591.5E6	565.2E6	564.372	606.117
34) L7 AR-1260-4	8.015	7.289	1104.8E6	1418.7E6	552.112	583.649
35) L7 AR-1260-5	8.331	7.635	2222.2E6	1001.4E6	557.674	571.788

(f)=RT Delta > 1/2 Window (#)=Amounts differ by > 25% (m)=manual int.

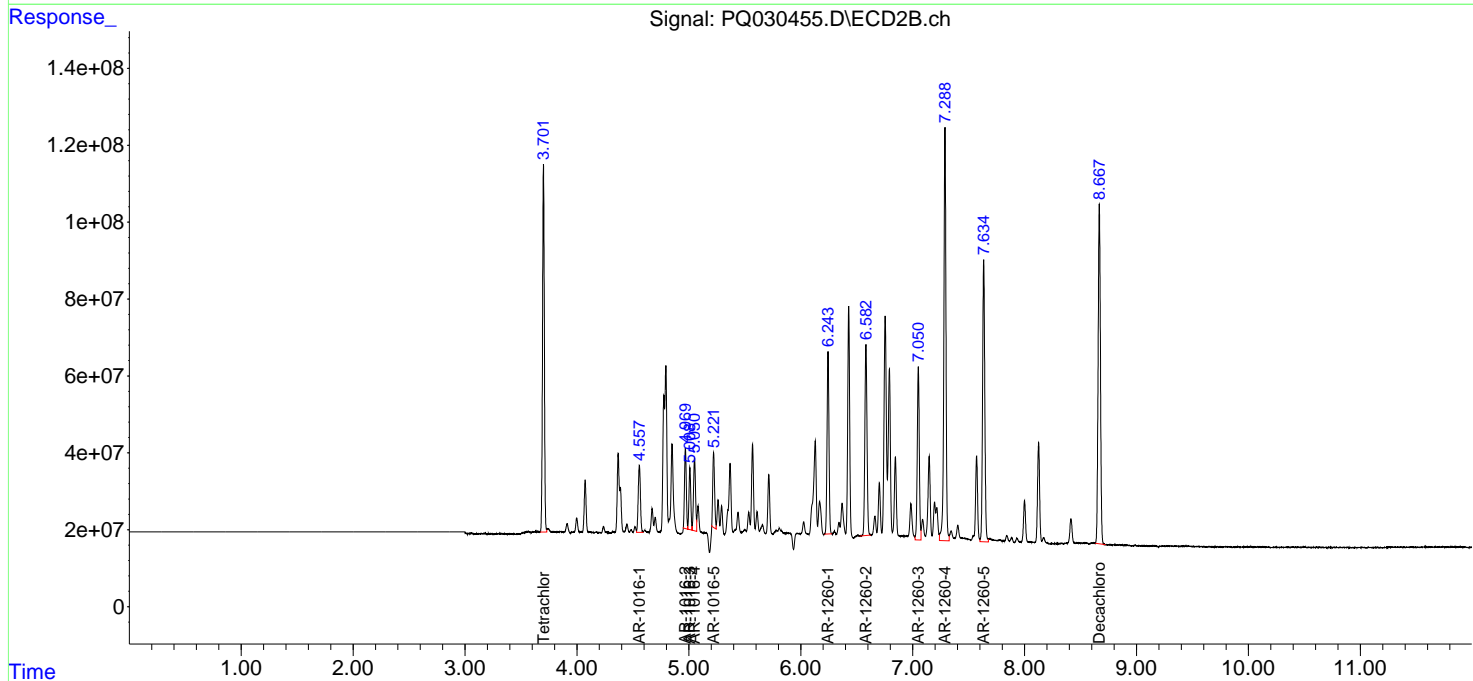
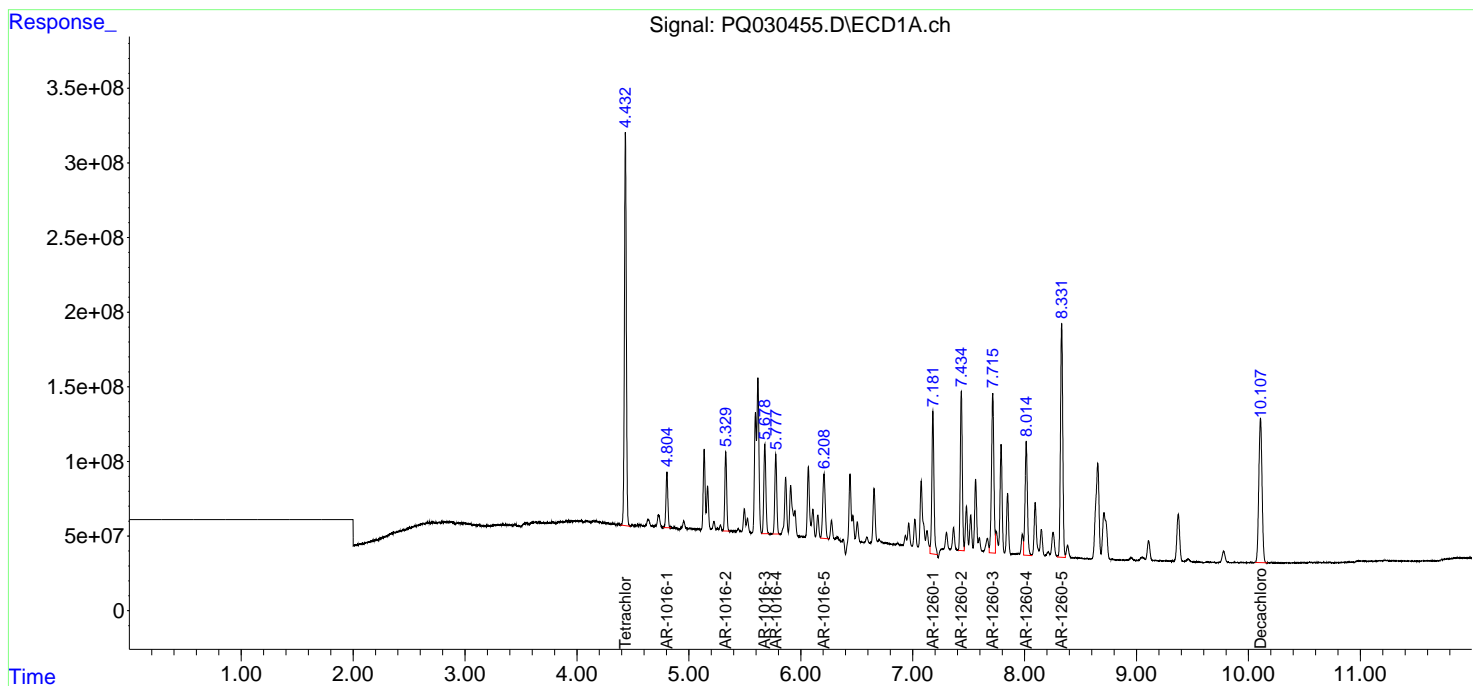
Data Path : Z:\pestpcbsrv\HPCHEM1\ECD_Q\Data\PQ070618\
 Data File : PQ030455.D
 Signal(s) : Signal #1: ECD1A.ch Signal #2: ECD2B.ch
 Acq On : 06 Jul 2018 02:17
 Operator : UA/SM
 Sample : AR1660CCC500
 Misc :
 ALS Vial : 3 Sample Multiplier: 1

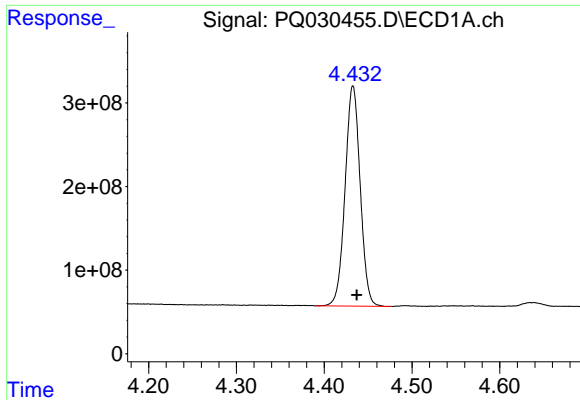
Instrument :
 ECD_Q
Client Sampled :
 AR1660CCC500

Manual Integrations
APPROVED
 mohammad
 7/6/2018 12:31:17 PM

Integration File signal 1: autoint1.e
 Integration File signal 2: autoint2.e
 Quant Time: Jul 06 03:02:32 2018
 Quant Method : \\TERASTORAGE\Terastorage\pestpcbsrv\HPCHEM1\ECD_Q\Method\PQ062918.M
 Quant Title : GC EXTRACTABLES
 QLast Update : Fri Jun 29 01:53:51 2018
 Response via : Initial Calibration
 Integrator: ChemStation

Volume Inj. : 2 µl
 Signal #1 Phase : ZB-MR1 Signal #2 Phase: ZB-MR2
 Signal #1 Info : 30Mx0.32mmx 0.50µ Signal #2 Info : 30M x 0.32mm x 0.25µm





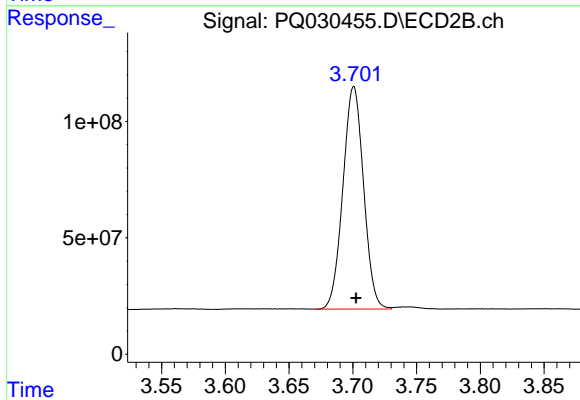
#1 Tetrachloro-m-xylene

R.T.: 4.433 min
Delta R.T.: -0.004 min
Response: 3146851197
Conc: 74.97 ng/ml

Instrument :
ECD_Q
ClientSampleId :
AR1660CCC500

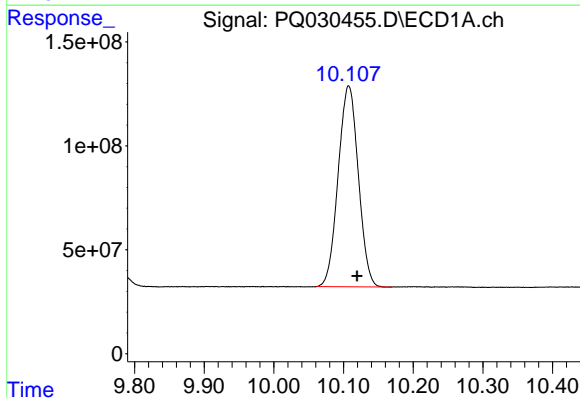
Manual Integrations
APPROVED

mohammad
7/6/2018 12:31:17 PM



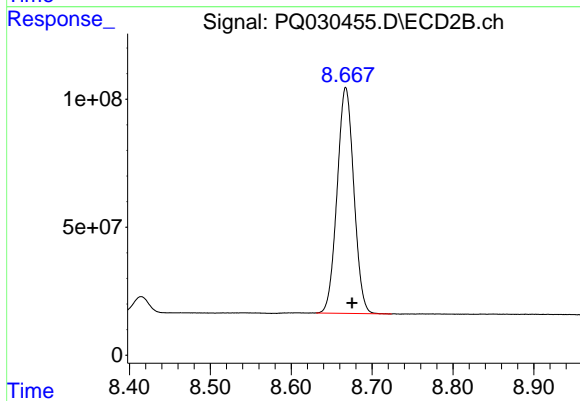
#1 Tetrachloro-m-xylene

R.T.: 3.701 min
Delta R.T.: -0.002 min
Response: 1079218529
Conc: 78.42 ng/ml



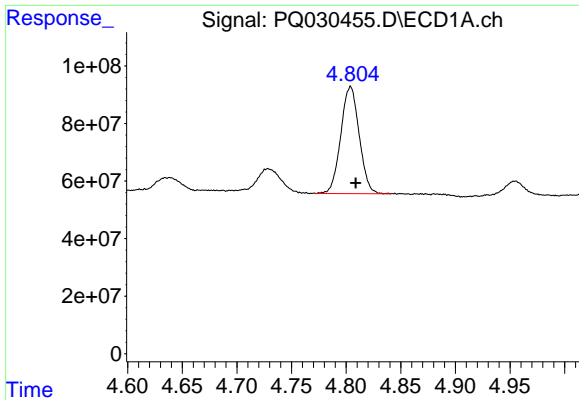
#2 Decachlorobiphenyl

R.T.: 10.107 min
Delta R.T.: -0.012 min
Response: 1943331127
Conc: 55.00 ng/ml



#2 Decachlorobiphenyl

R.T.: 8.667 min
Delta R.T.: -0.008 min
Response: 1266277889
Conc: 62.02 ng/ml



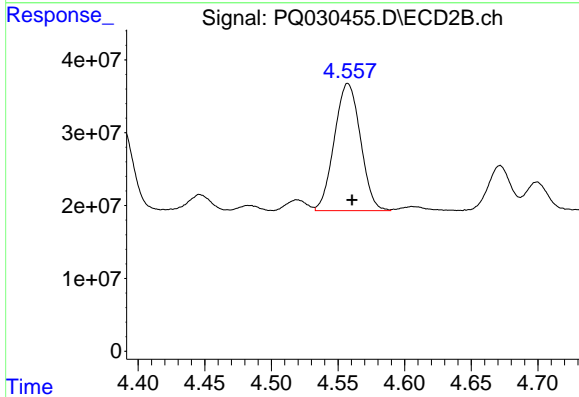
#3 AR-1016-1

R.T.: 4.804 min
 Delta R.T.: -0.005 min
 Response: 435309018
 Conc: 623.18 ng/ml

Instrument :
 ECD_Q
 ClientSampleId :
 AR1660CCC500

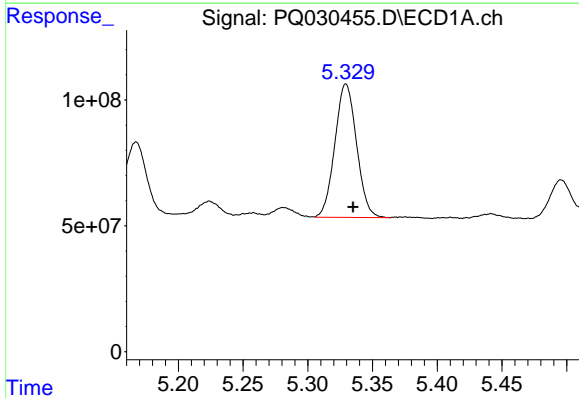
Manual Integrations
 APPROVED

mohammad
 7/6/2018 12:31:17 PM



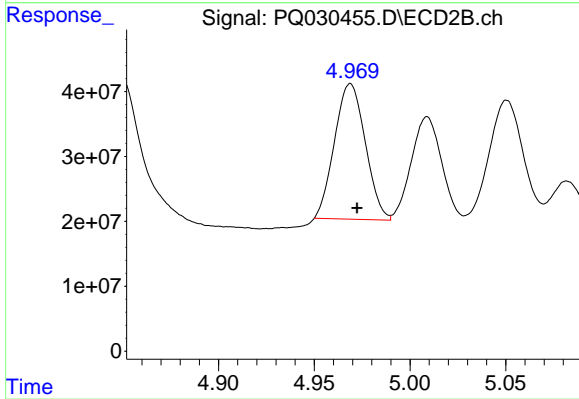
#3 AR-1016-1

R.T.: 4.557 min
 Delta R.T.: -0.003 min
 Response: 237879448
 Conc: 628.43 ng/ml



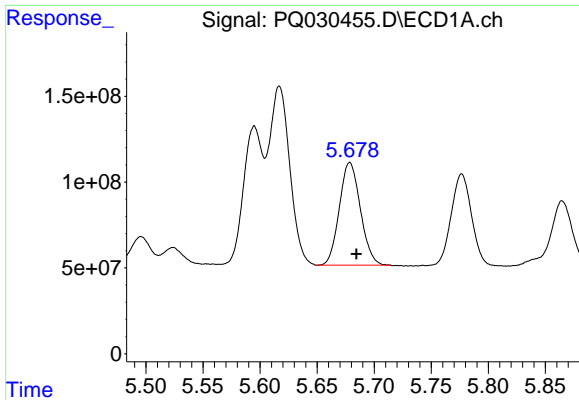
#4 AR-1016-2

R.T.: 5.329 min
 Delta R.T.: -0.006 min
 Response: 618225990
 Conc: 657.02 ng/ml



#4 AR-1016-2

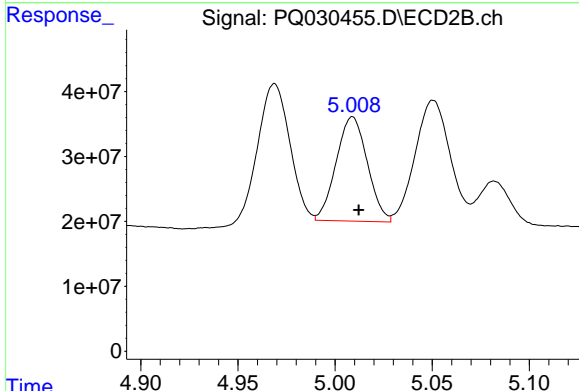
R.T.: 4.969 min
 Delta R.T.: -0.003 min
 Response: 234161153
 Conc: 605.66 ng/ml



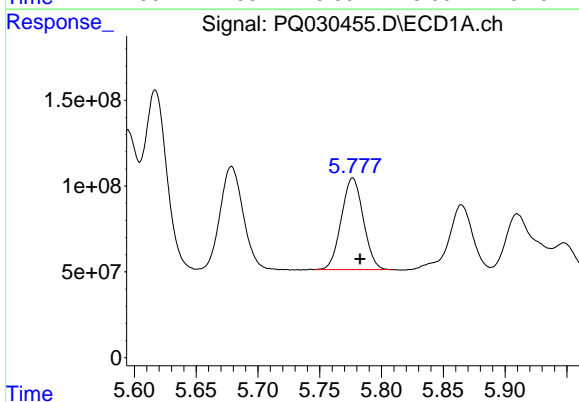
#5 AR-1016-3
 R.T.: 5.678 min
 Delta R.T.: -0.006 min
 Response: 768279333
 Conc: 584.71 ng/ml m

Instrument :
 ECD_Q
ClientSampleId :
 AR1660CCC500

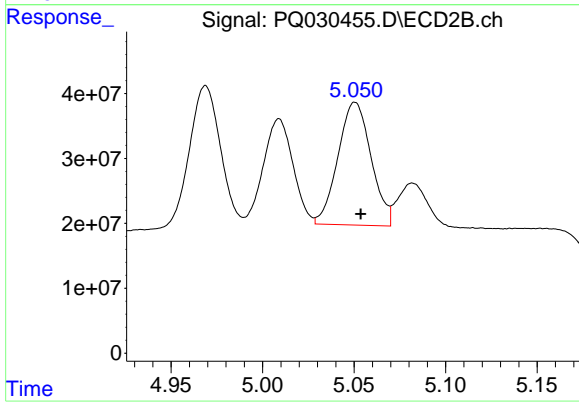
Manual Integrations
APPROVED
 mohammad
 7/6/2018 12:31:17 PM



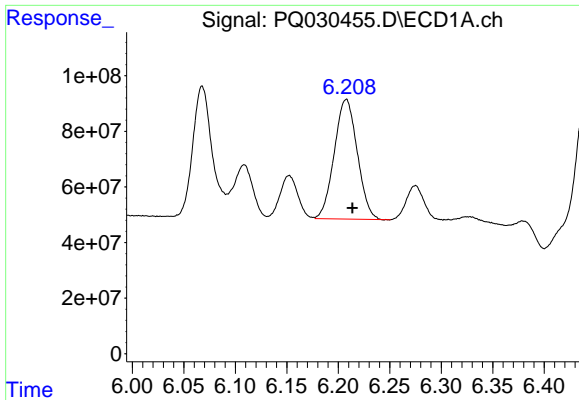
#5 AR-1016-3
 R.T.: 5.009 min
 Delta R.T.: -0.003 min
 Response: 179557905
 Conc: 589.76 ng/ml



#6 AR-1016-4
 R.T.: 5.777 min
 Delta R.T.: -0.006 min
 Response: 659581022
 Conc: 598.14 ng/ml m



#6 AR-1016-4
 R.T.: 5.051 min
 Delta R.T.: -0.003 min
 Response: 238667980
 Conc: 584.16 ng/ml

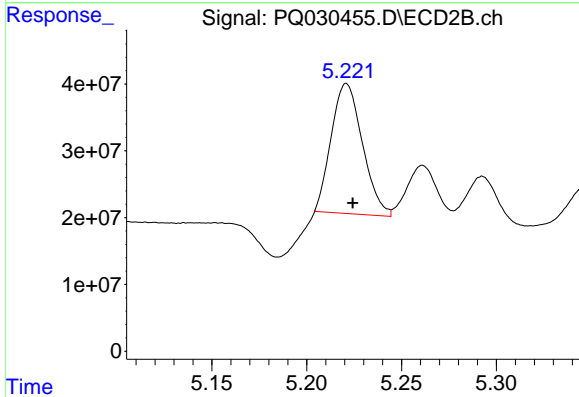


#7 AR-1016-5

R.T.: 6.208 min
 Delta R.T.: -0.006 min
 Response: 669947843
 Conc: 609.19 ng/ml

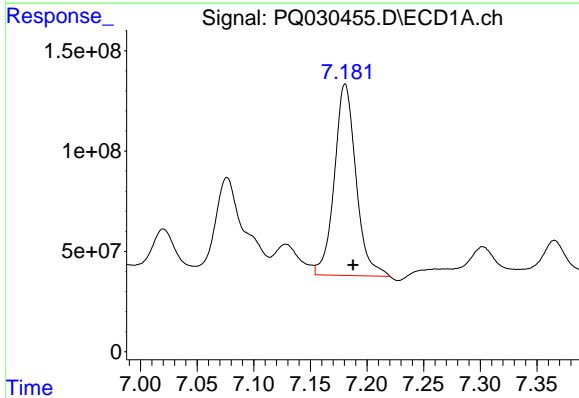
Instrument :
 ECD_Q
ClientSampled :
 AR1660CCC500

Manual Integrations
APPROVED
 mohammad
 7/6/2018 12:31:17 PM



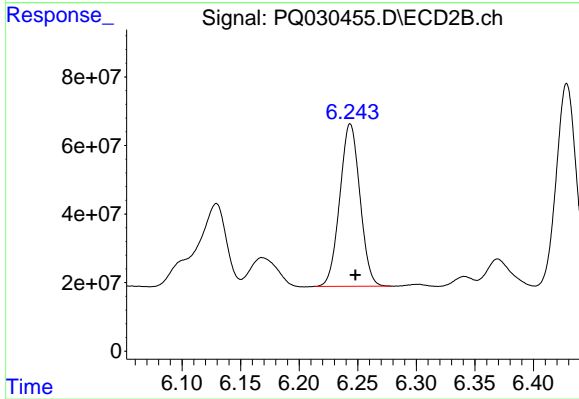
#7 AR-1016-5

R.T.: 5.221 min
 Delta R.T.: -0.003 min
 Response: 222881860
 Conc: 535.77 ng/ml



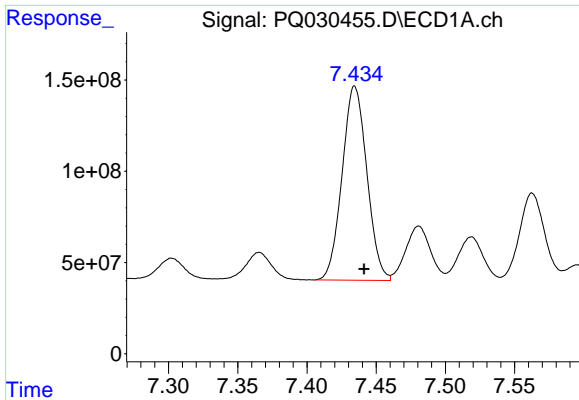
#31 AR-1260-1

R.T.: 7.181 min
 Delta R.T.: -0.007 min
 Response: 1262029477
 Conc: 629.20 ng/ml



#31 AR-1260-1

R.T.: 6.243 min
 Delta R.T.: -0.005 min
 Response: 567404696
 Conc: 570.37 ng/ml m

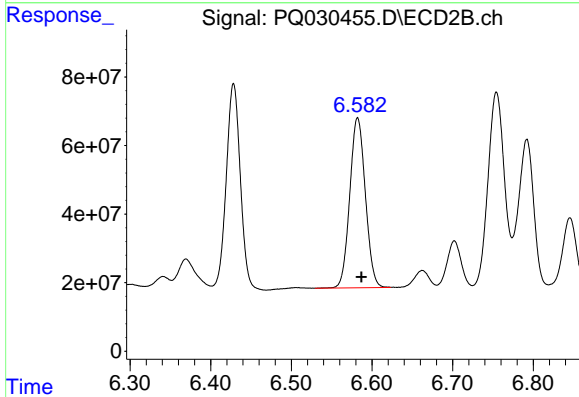


#32 AR-1260-2

R.T.: 7.434 min
 Delta R.T.: -0.007 min
 Response: 1324473255
 Conc: 558.09 ng/ml

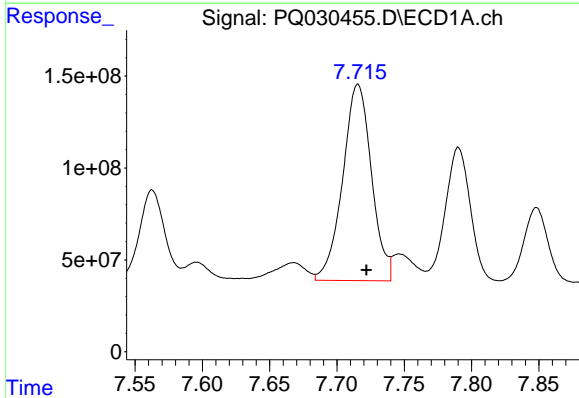
Instrument :
 ECD_Q
 ClientSampleId :
 AR1660CCC500

Manual Integrations
 APPROVED
 mohammad
 7/6/2018 12:31:17 PM



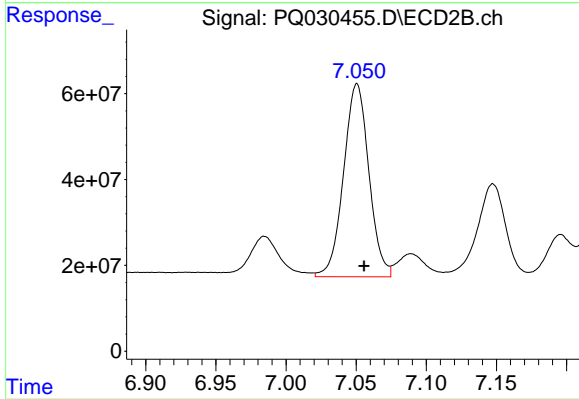
#32 AR-1260-2

R.T.: 6.582 min
 Delta R.T.: -0.005 min
 Response: 665606766
 Conc: 580.19 ng/ml m



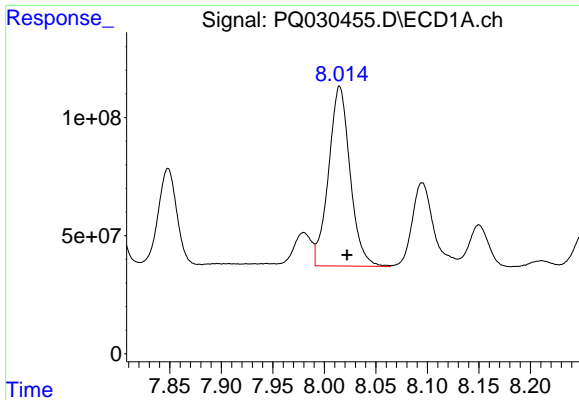
#33 AR-1260-3

R.T.: 7.716 min
 Delta R.T.: -0.006 min
 Response: 1591509260
 Conc: 564.37 ng/ml



#33 AR-1260-3

R.T.: 7.051 min
 Delta R.T.: -0.005 min
 Response: 565190687
 Conc: 606.12 ng/ml



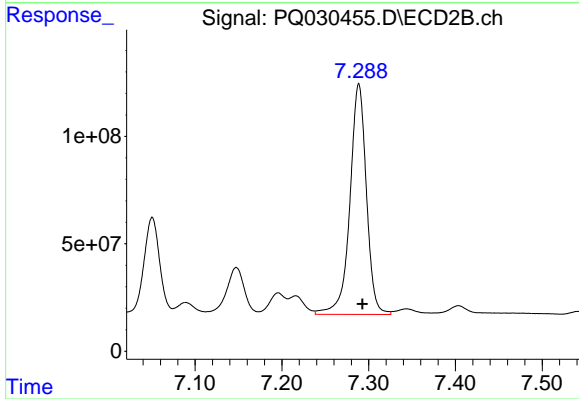
#34 AR-1260-4

R.T.: 8.015 min
 Delta R.T.: -0.007 min
 Response: 1104822928
 Conc: 552.11 ng/ml

Instrument :
 ECD_Q
 ClientSampleId :
 AR1660CCC500

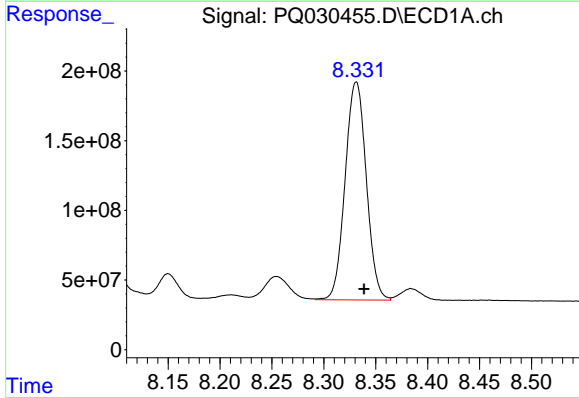
Manual Integrations
 APPROVED

mohammad
 7/6/2018 12:31:17 PM



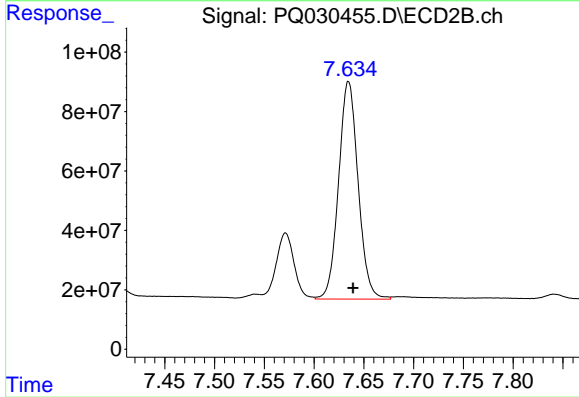
#34 AR-1260-4

R.T.: 7.289 min
 Delta R.T.: -0.004 min
 Response: 1418729313
 Conc: 583.65 ng/ml



#35 AR-1260-5

R.T.: 8.331 min
 Delta R.T.: -0.007 min
 Response: 2222176597
 Conc: 557.67 ng/ml



#35 AR-1260-5

R.T.: 7.635 min
 Delta R.T.: -0.005 min
 Response: 1001370851
 Conc: 571.79 ng/ml