

Data Path : Z:\pestpcbsrv\HPCHEM1\ECD_Q\Data\PQ070620\
 Data File : PQ048614.D
 Signal(s) : Signal #1: ECD1A.ch Signal #2: ECD2B.ch
 Acq On : 06 Jul 2020 13:58
 Operator : DD\AJ
 Sample : L3204-01MSD
 Misc :
 ALS Vial : 10 Sample Multiplier: 1

Instrument :
 ECD_Q
 ClientSampleId :
 WF-COMPMSD

Integration File signal 1: autoint1.e
 Integration File signal 2: autoint2.e
 Quant Time: Jul 06 14:42:35 2020
 Quant Method : Z:\pestpcbsrv\HPCHEM1\ECD_Q\Method\PQ061720.M
 Quant Title : GC EXTRACTABLES
 QLast Update : Wed Jun 17 15:37:20 2020
 Response via : Initial Calibration
 Integrator: ChemStation

Volume Inj. : 2 µl
 Signal #1 Phase : ZB-MR1 Signal #2 Phase: ZB-MR2
 Signal #1 Info : 30Mx0.32mmx 0.50µ Signal #2 Info : 30M x 0.32mm x 0.25µm

Compound	RT#1	RT#2	Resp#1	Resp#2	ng/ml	ng/ml

System Monitoring Compounds						
1) SA Tetrachlo...	5.282	4.291	111.7E6	57551673	15.158	16.301
2) SA Decachlor...	11.542	9.653	172.4E6	84448282	17.819	17.549
Target Compounds						
3) L1 AR-1016-1	6.614	5.555	40770367	21575659	142.070	152.702
4) L1 AR-1016-2	6.638	5.577	55312845	28349775	139.557	146.834
5) L1 AR-1016-3	6.705	5.769	33548913	15133927	135.996	159.312
6) L1 AR-1016-4	6.814	5.819	28527845	12507876	139.949	161.141
7) L1 AR-1016-5	7.129	6.050	25959429	15581305	127.981	144.921
31) L7 AR-1260-1	8.307	7.145	63681987	34214134	168.913	157.513
32) L7 AR-1260-2	8.572	7.340	87036275	42992644	189.473	159.436
33) L7 AR-1260-3	8.941	7.497	65389773	39103672	178.059	157.958
34) L7 AR-1260-4	9.188	7.980	79140560	30173431	184.735	141.128
35) L7 AR-1260-5	9.541	8.226	147.1E6	77964627	164.045	144.481

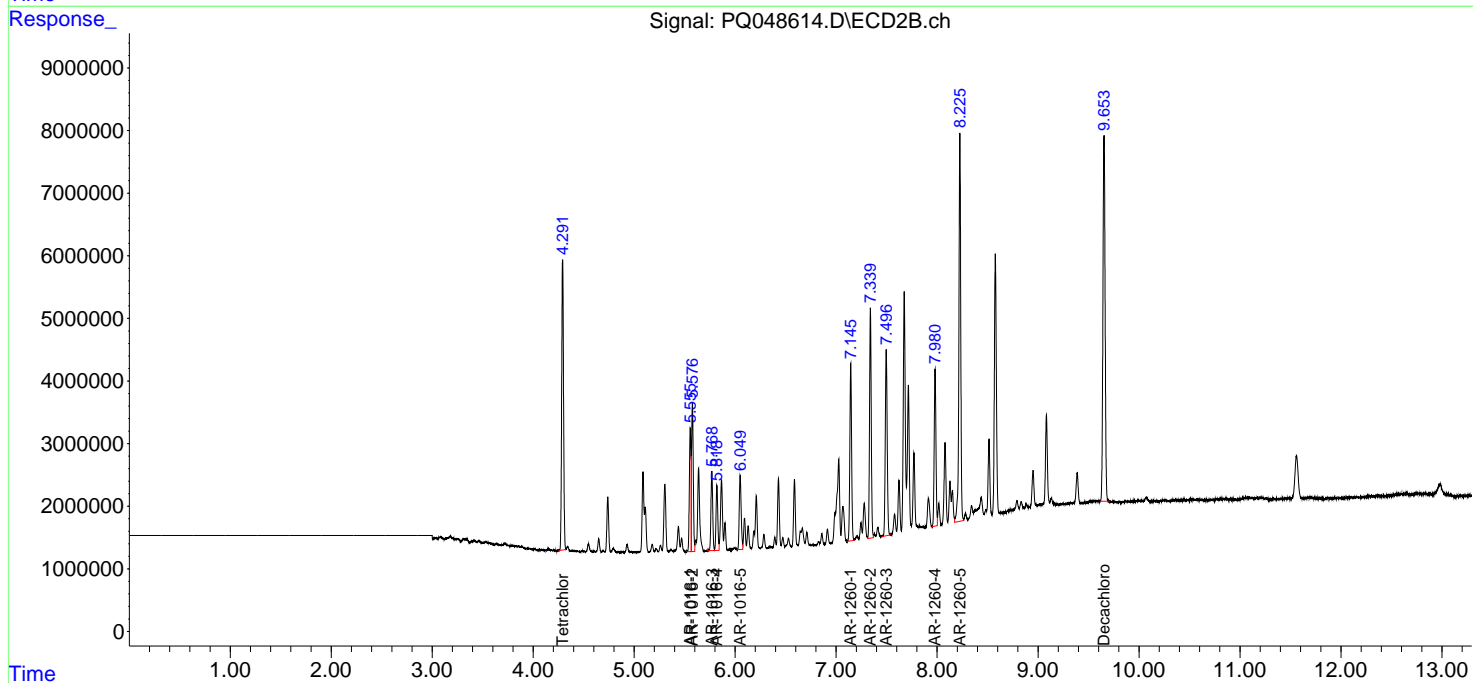
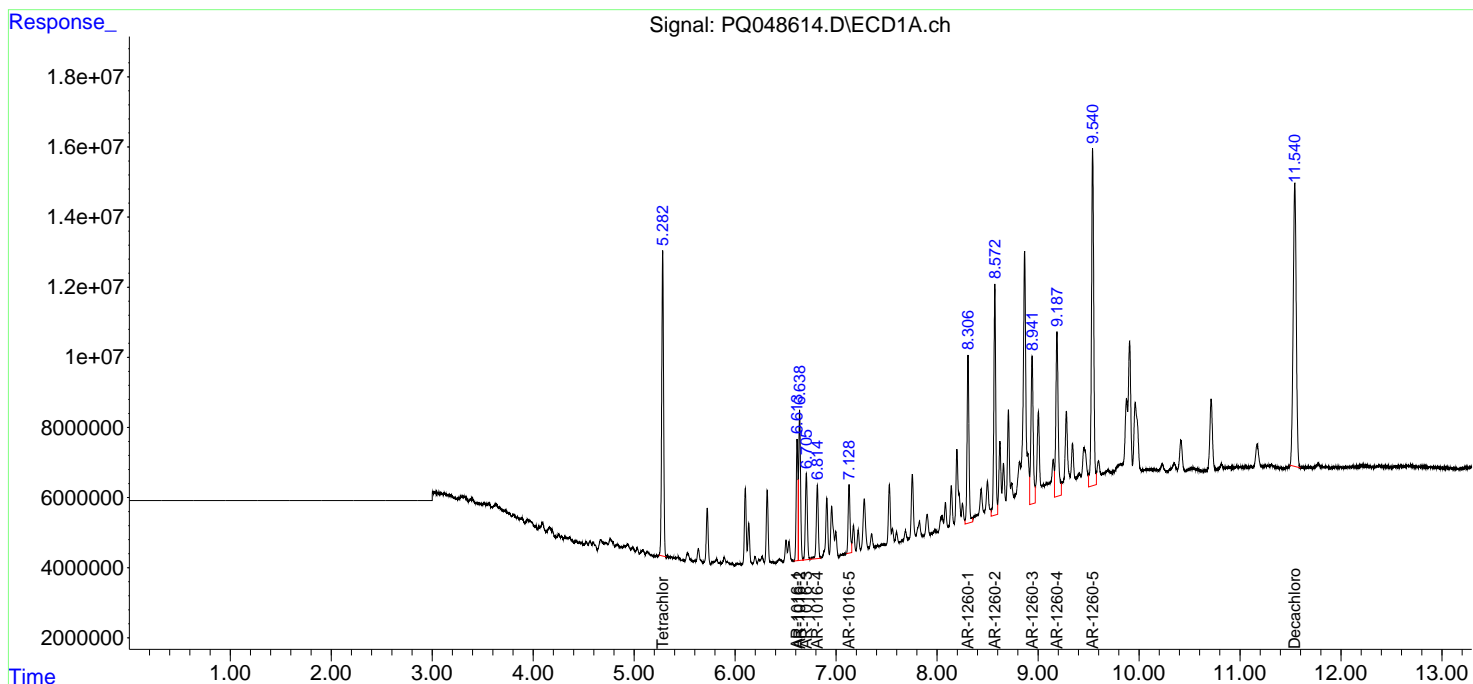
(f)=RT Delta > 1/2 Window (#)=Amounts differ by > 25% (m)=manual int.

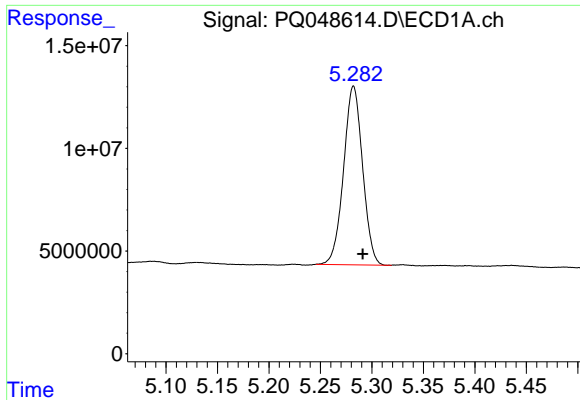
Data Path : Z:\pestpcbsrv\HPCHEM1\ECD_Q\Data\PQ070620\
 Data File : PQ048614.D
 Signal(s) : Signal #1: ECD1A.ch Signal #2: ECD2B.ch
 Acq On : 06 Jul 2020 13:58
 Operator : DD\AJ
 Sample : L3204-01MSD
 Misc :
 ALS Vial : 10 Sample Multiplier: 1

Instrument :
 ECD_Q
 Client Sampled :
 WF-COMPMSD

Integration File signal 1: autoint1.e
 Integration File signal 2: autoint2.e
 Quant Time: Jul 06 14:42:35 2020
 Quant Method : Z:\pestpcbsrv\HPCHEM1\ECD_Q\Method\PQ061720.M
 Quant Title : GC EXTRACTABLES
 QLast Update : Wed Jun 17 15:37:20 2020
 Response via : Initial Calibration
 Integrator: ChemStation

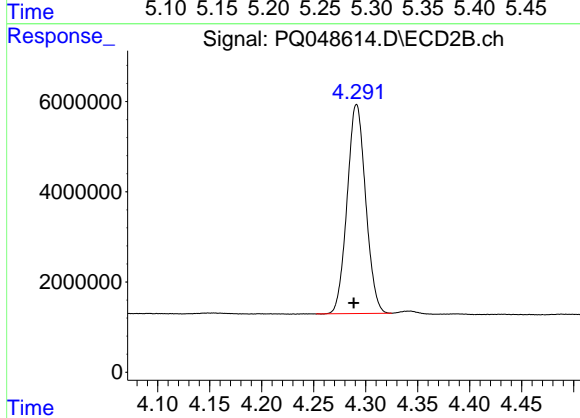
Volume Inj. : 2 µl
 Signal #1 Phase : ZB-MR1 Signal #2 Phase: ZB-MR2
 Signal #1 Info : 30Mx0.32mmx 0.50µ Signal #2 Info : 30M x 0.32mm x 0.25µm



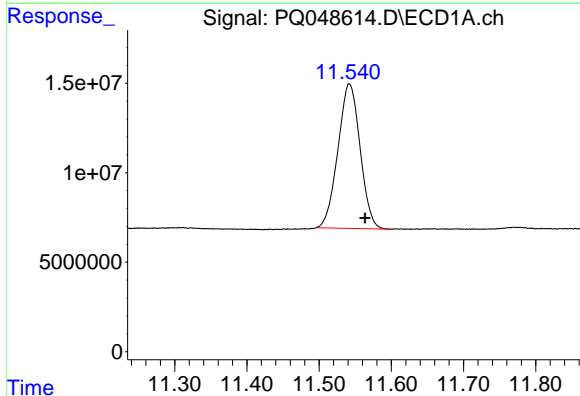


#1 Tetrachloro-m-xylene
R.T.: 5.282 min
Delta R.T.: -0.009 min
Response: 111731972
Conc: 15.16 ng/ml

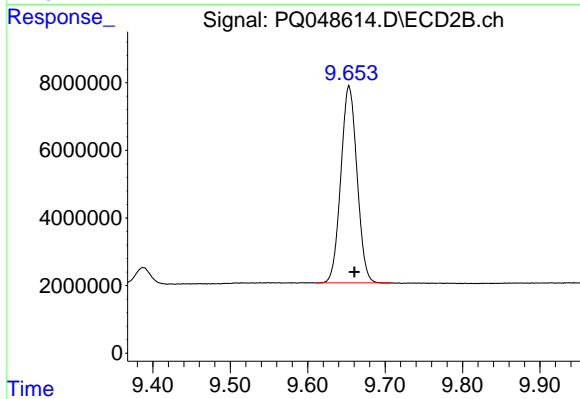
Instrument :
ECD_Q
ClientSampleId :
WF-COMPMSD



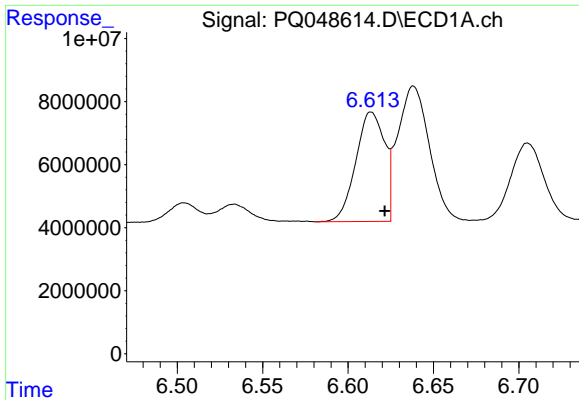
#1 Tetrachloro-m-xylene
R.T.: 4.291 min
Delta R.T.: 0.003 min
Response: 57551673
Conc: 16.30 ng/ml



#2 Decachlorobiphenyl
R.T.: 11.542 min
Delta R.T.: -0.022 min
Response: 172413753
Conc: 17.82 ng/ml



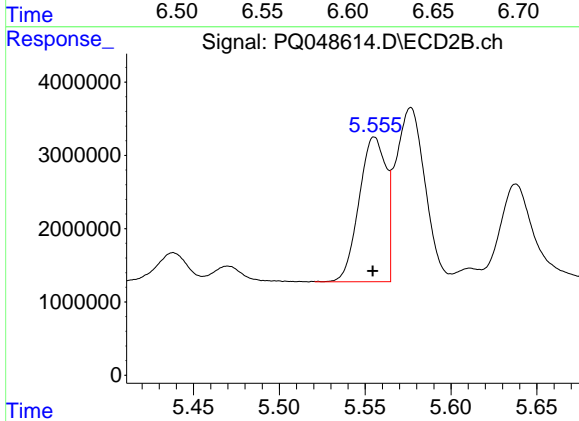
#2 Decachlorobiphenyl
R.T.: 9.653 min
Delta R.T.: -0.007 min
Response: 84448282
Conc: 17.55 ng/ml



#3 AR-1016-1

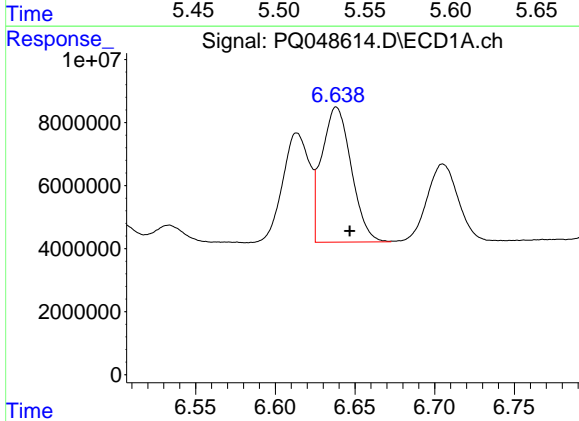
R.T.: 6.614 min
 Delta R.T.: -0.008 min
 Response: 40770367
 Conc: 142.07 ng/ml

Instrument :
 ECD_Q
 ClientSampleId :
 WF-COMPMSD



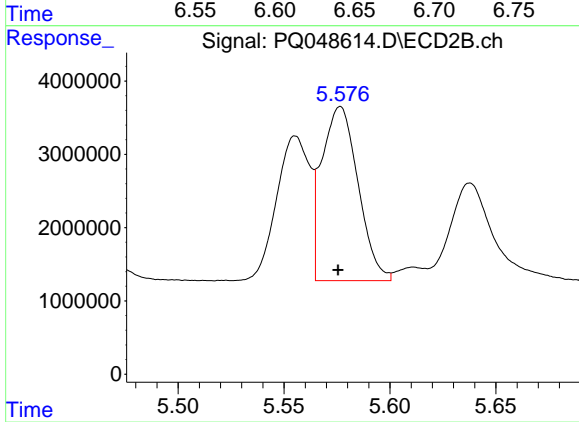
#3 AR-1016-1

R.T.: 5.555 min
 Delta R.T.: 0.001 min
 Response: 21575659
 Conc: 152.70 ng/ml



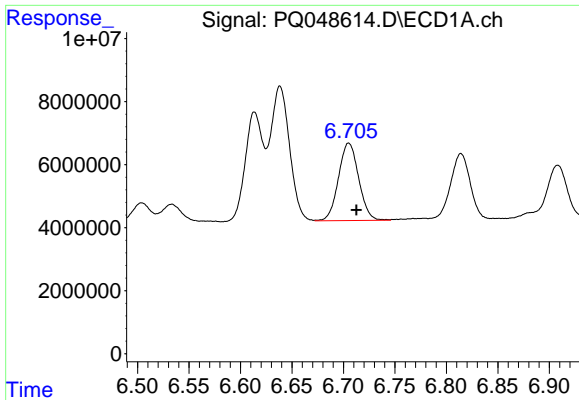
#4 AR-1016-2

R.T.: 6.638 min
 Delta R.T.: -0.008 min
 Response: 55312845
 Conc: 139.56 ng/ml



#4 AR-1016-2

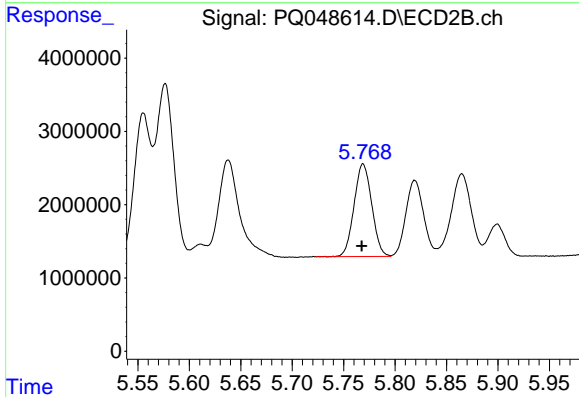
R.T.: 5.577 min
 Delta R.T.: 0.001 min
 Response: 28349775
 Conc: 146.83 ng/ml



#5 AR-1016-3

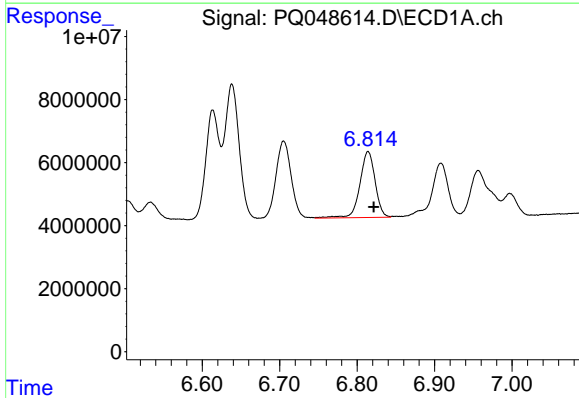
R.T.: 6.705 min
Delta R.T.: -0.007 min
Response: 33548913
Conc: 136.00 ng/ml

Instrument :
ECD_Q
ClientSampleId :
WF-COMPMSD



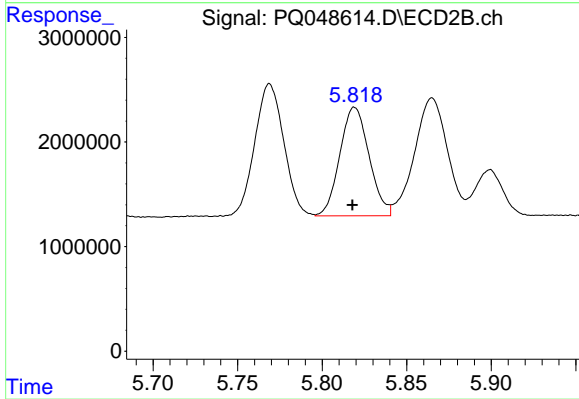
#5 AR-1016-3

R.T.: 5.769 min
Delta R.T.: 0.001 min
Response: 15133927
Conc: 159.31 ng/ml



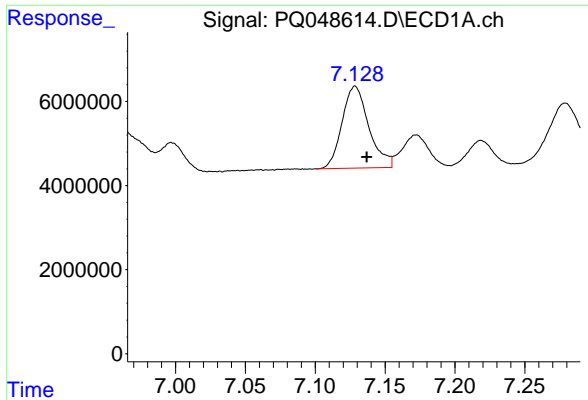
#6 AR-1016-4

R.T.: 6.814 min
Delta R.T.: -0.007 min
Response: 28527845
Conc: 139.95 ng/ml



#6 AR-1016-4

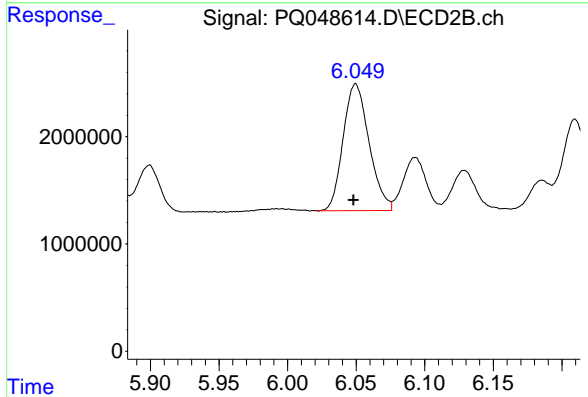
R.T.: 5.819 min
Delta R.T.: 0.001 min
Response: 12507876
Conc: 161.14 ng/ml



#7 AR-1016-5

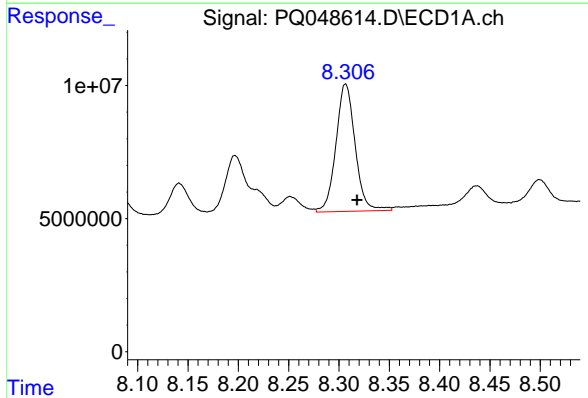
R.T.: 7.129 min
 Delta R.T.: -0.008 min
 Response: 25959429
 Conc: 127.98 ng/ml

Instrument :
 ECD_Q
 ClientSampleId :
 WF-COMPMSD



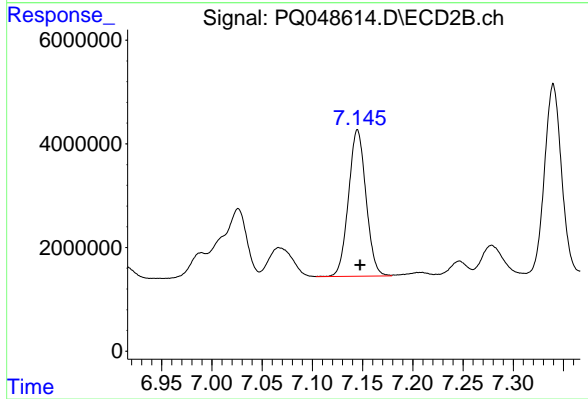
#7 AR-1016-5

R.T.: 6.050 min
 Delta R.T.: 0.002 min
 Response: 15581305
 Conc: 144.92 ng/ml



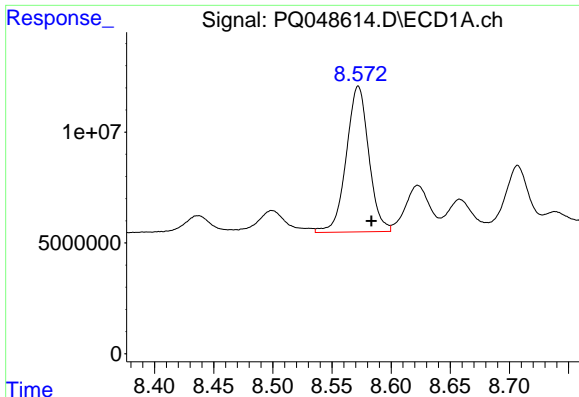
#31 AR-1260-1

R.T.: 8.307 min
 Delta R.T.: -0.011 min
 Response: 63681987
 Conc: 168.91 ng/ml



#31 AR-1260-1

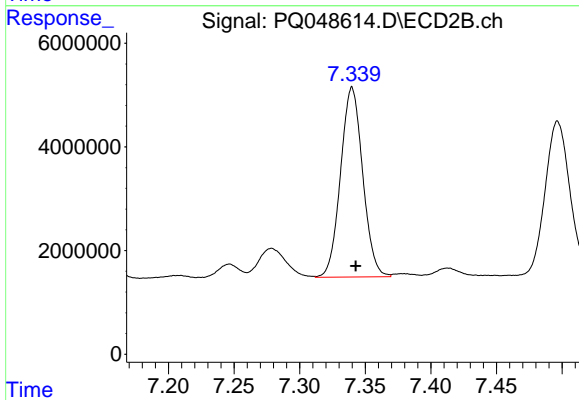
R.T.: 7.145 min
 Delta R.T.: -0.002 min
 Response: 34214134
 Conc: 157.51 ng/ml



#32 AR-1260-2

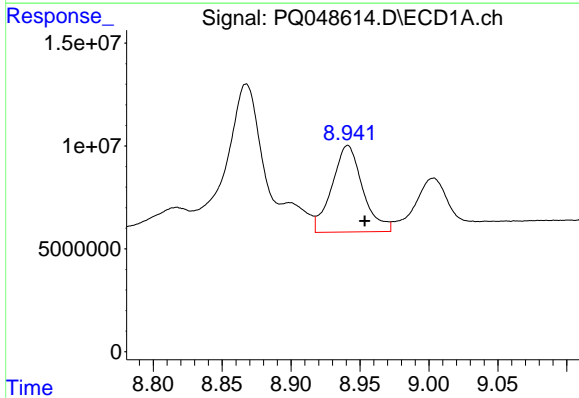
R.T.: 8.572 min
Delta R.T.: -0.011 min
Response: 87036275
Conc: 189.47 ng/ml

Instrument :
ECD_Q
ClientSampleId :
WF-COMPMSD



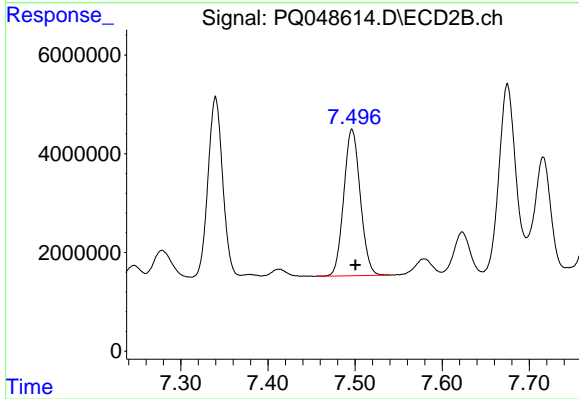
#32 AR-1260-2

R.T.: 7.340 min
Delta R.T.: -0.003 min
Response: 42992644
Conc: 159.44 ng/ml



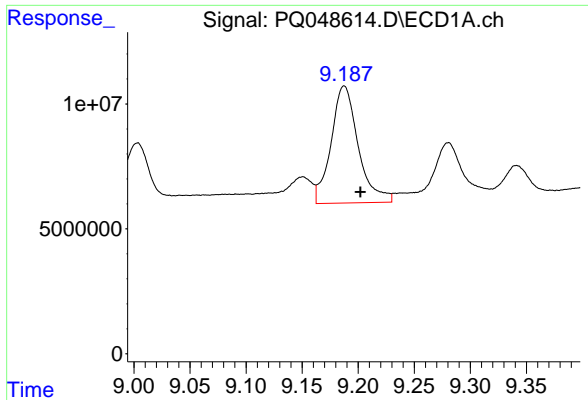
#33 AR-1260-3

R.T.: 8.941 min
Delta R.T.: -0.012 min
Response: 65389773
Conc: 178.06 ng/ml



#33 AR-1260-3

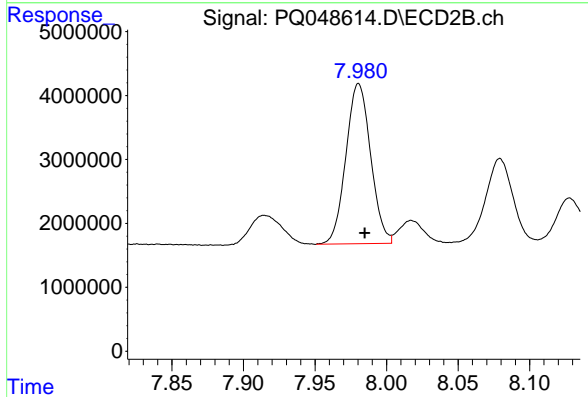
R.T.: 7.497 min
Delta R.T.: -0.004 min
Response: 39103672
Conc: 157.96 ng/ml



#34 AR-1260-4

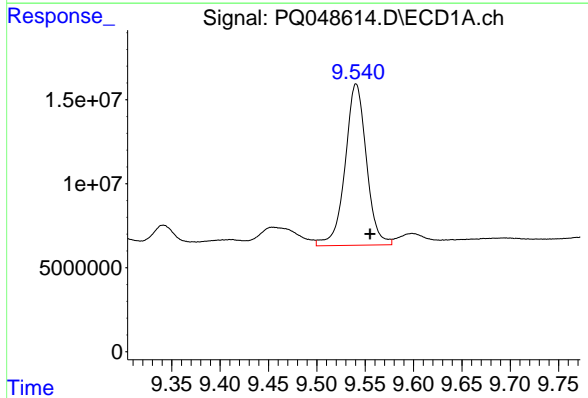
R.T.: 9.188 min
 Delta R.T.: -0.014 min
 Response: 79140560
 Conc: 184.73 ng/ml

Instrument :
 ECD_Q
ClientSampled :
 WF-COMPMSD



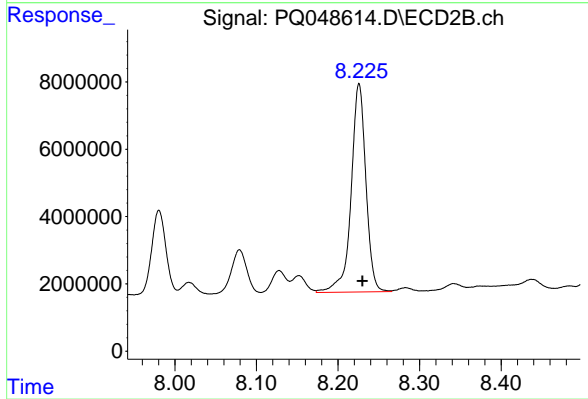
#34 AR-1260-4

R.T.: 7.980 min
 Delta R.T.: -0.004 min
 Response: 30173431
 Conc: 141.13 ng/ml



#35 AR-1260-5

R.T.: 9.541 min
 Delta R.T.: -0.014 min
 Response: 147084482
 Conc: 164.04 ng/ml



#35 AR-1260-5

R.T.: 8.226 min
 Delta R.T.: -0.004 min
 Response: 77964627
 Conc: 144.48 ng/ml