

Data Path : Z:\pestpcbsrv\HPCHEM1\ECD_Q\Data\PQ070623\
 Data File : PQ061966.D
 Signal(s) : Signal #1: ECD1A.ch Signal #2: ECD2B.ch
 Acq On : 06 Jul 2023 15:59
 Operator : YP\AJ
 Sample : AR1248CCC500
 Misc :
 ALS Vial : 5 Sample Multiplier: 1

Instrument :
 ECD_Q
ClientSampleId :
 AR1248CCC500

Integration File signal 1: autoint1.e
 Integration File signal 2: autoint2.e
 Quant Time: Jul 06 21:55:38 2023
 Quant Method : Z:\pestpcbsrv\HPCHEM1\ECD_Q\Method\PQ070123.M
 Quant Title : GC EXTRACTABLES
 QLast Update : Tue Jul 04 05:32:27 2023
 Response via : Initial Calibration
 Integrator: ChemStation

Volume Inj. : 2 µl
 Signal #1 Phase : ZB-MR1 Signal #2 Phase: ZB-MR2
 Signal #1 Info : 30Mx0.32mmx 0.50µ Signal #2 Info : 30M x 0.32mm x 0.25µm

Compound	RT#1	RT#2	Resp#1	Resp#2	ng/ml	ng/ml

System Monitoring Compounds						
1) SA Tetrachlo...	3.405	2.759	249.4E6	140.0E6	51.124	55.806
2) SA Decachlor...	8.587	7.530	189.7E6	168.0E6	52.213	50.428
Target Compounds						
21) L5 AR-1248-1	4.505	3.760	50551163	30806423	486.169	492.742
22) L5 AR-1248-2	4.770	3.985	70295667	45998083	489.312	490.548
23) L5 AR-1248-3	4.960	4.022	85243004	43949594	490.712	485.396
24) L5 AR-1248-4	5.354	4.179	94730230	54910438	493.565	486.624
25) L5 AR-1248-5	5.389	4.554	88243271	54482777	487.203	486.312

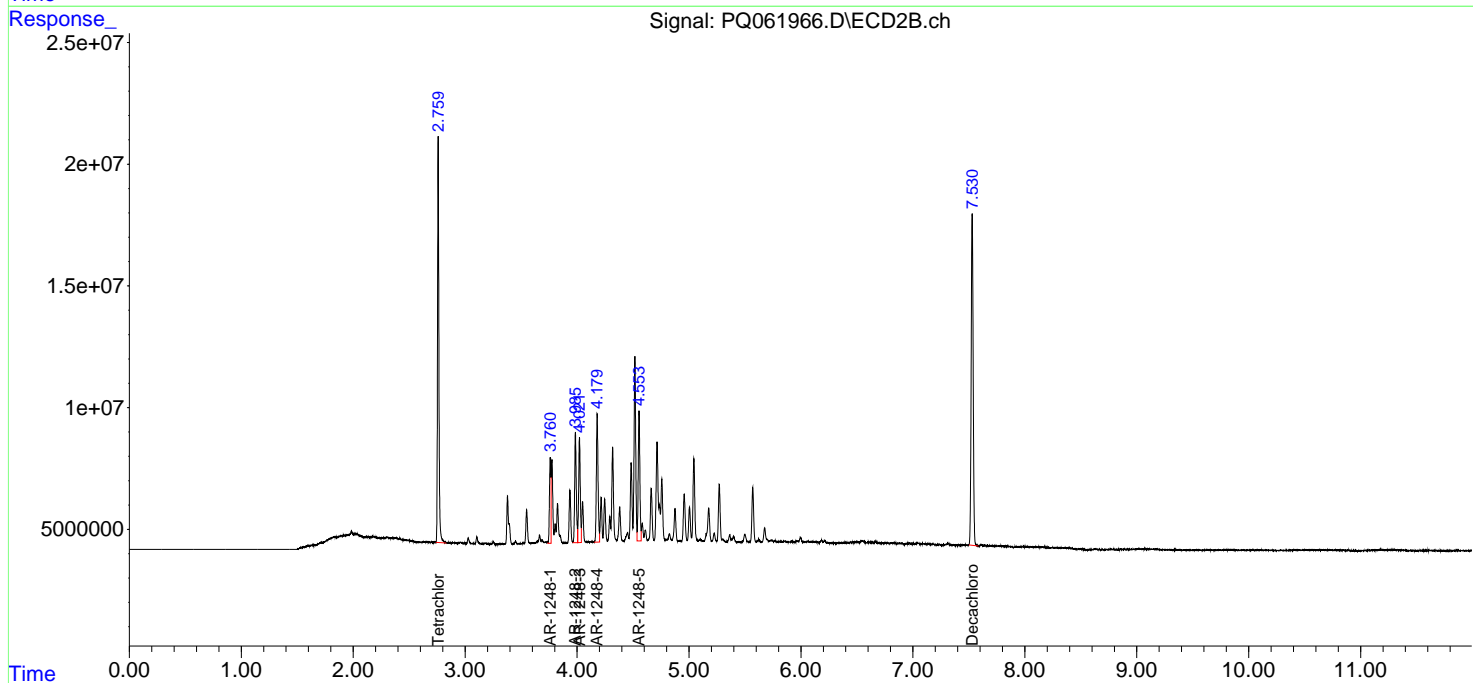
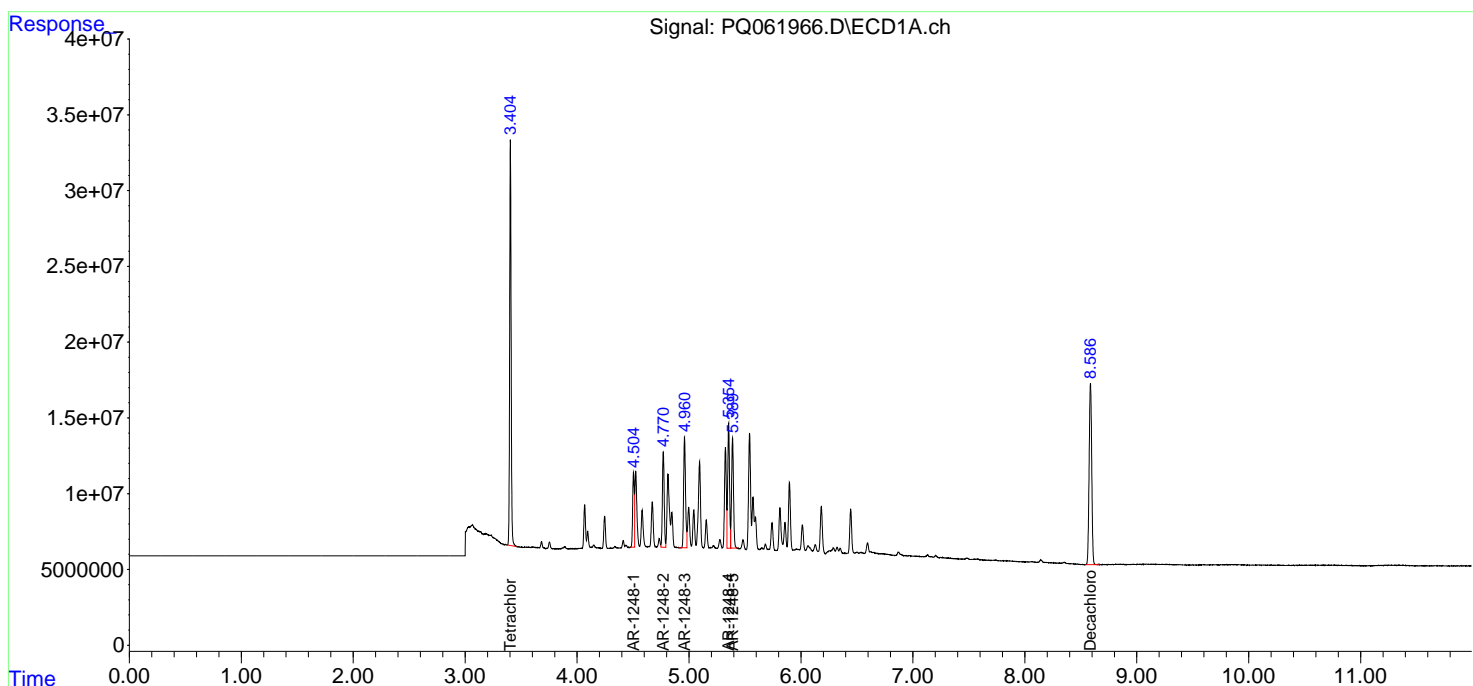
(f)=RT Delta > 1/2 Window (#)=Amounts differ by > 25% (m)=manual int.

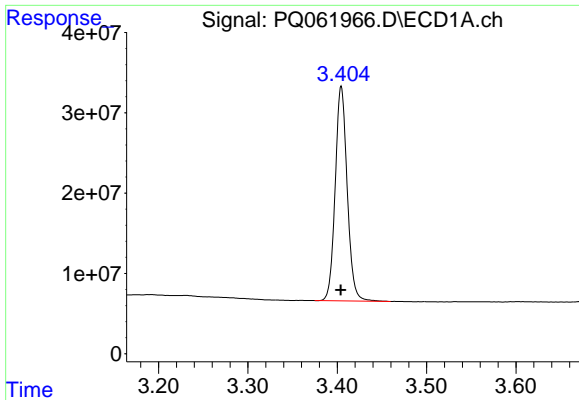
Data Path : Z:\pestpcbsrv\HPCHEM1\ECD_Q\Data\PQ070623\
Data File : PQ061966.D
Signal(s) : Signal #1: ECD1A.ch Signal #2: ECD2B.ch
Acq On : 06 Jul 2023 15:59
Operator : YP\AJ
Sample : AR1248CCC500
Misc :
ALS Vial : 5 Sample Multiplier: 1

Instrument :
ECD_Q
ClientSampleId :
AR1248CCC500

Integration File signal 1: autoint1.e
Integration File signal 2: autoint2.e
Quant Time: Jul 06 21:55:38 2023
Quant Method : Z:\pestpcbsrv\HPCHEM1\ECD_Q\Method\PQ070123.M
Quant Title : GC EXTRACTABLES
QLast Update : Tue Jul 04 05:32:27 2023
Response via : Initial Calibration
Integrator: ChemStation

Volume Inj. : 2 µl
Signal #1 Phase : ZB-MR1 Signal #2 Phase: ZB-MR2
Signal #1 Info : 30Mx0.32mmx 0.50µ Signal #2 Info : 30M x 0.32mm x 0.25µm

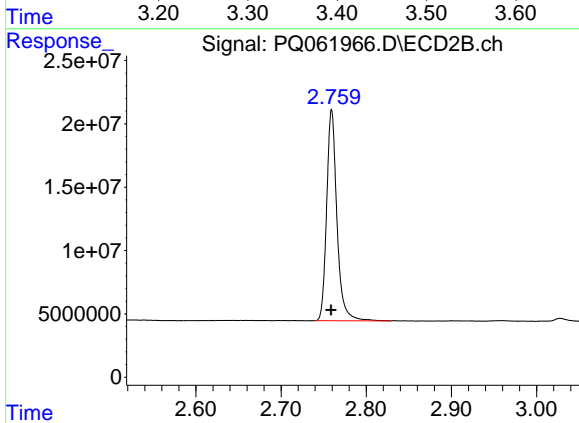




#1 Tetrachloro-m-xylene

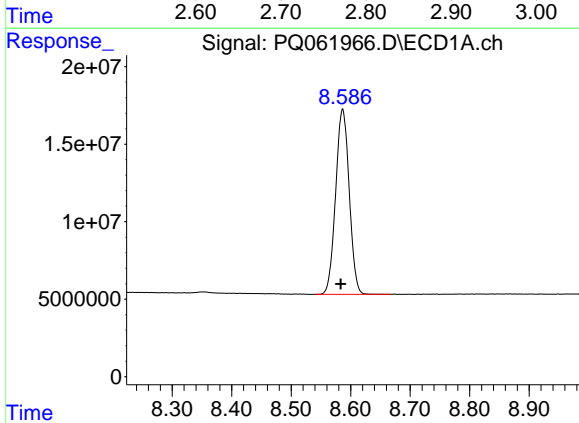
R.T.: 3.405 min
 Delta R.T.: 0.000 min
 Response: 249393167
 Conc: 51.12 ng/ml

Instrument :
 ECD_Q
 ClientSampleId :
 AR1248CCC500



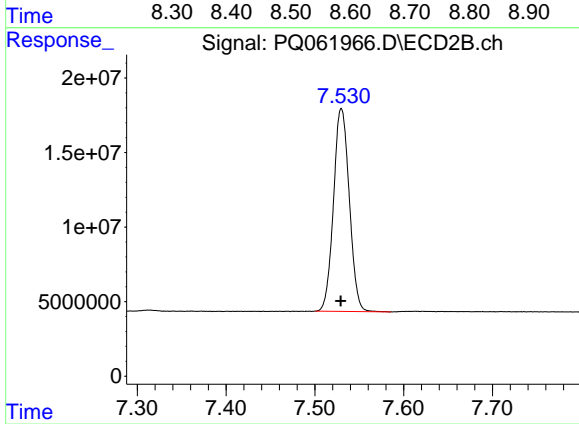
#1 Tetrachloro-m-xylene

R.T.: 2.759 min
 Delta R.T.: 0.000 min
 Response: 140023349
 Conc: 55.81 ng/ml



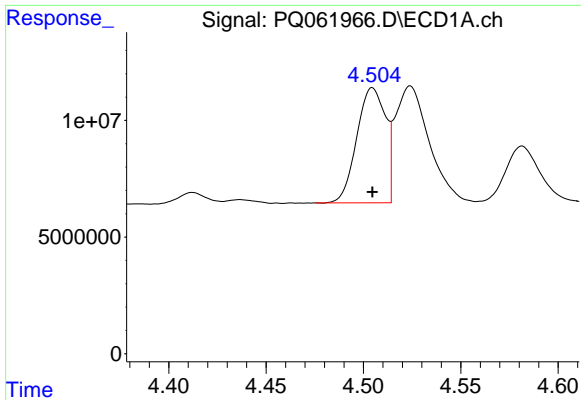
#2 Decachlorobiphenyl

R.T.: 8.587 min
 Delta R.T.: 0.003 min
 Response: 189677377
 Conc: 52.21 ng/ml



#2 Decachlorobiphenyl

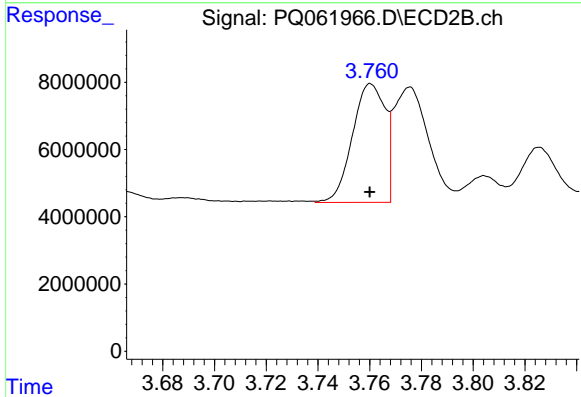
R.T.: 7.530 min
 Delta R.T.: 0.000 min
 Response: 168034462
 Conc: 50.43 ng/ml



#21 AR-1248-1

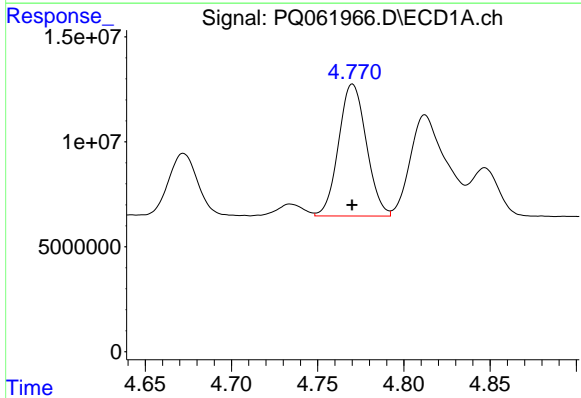
R.T.: 4.505 min
 Delta R.T.: 0.000 min
 Response: 50551163
 Conc: 486.17 ng/ml

Instrument :
 ECD_Q
 ClientSampleId :
 AR1248CCC500



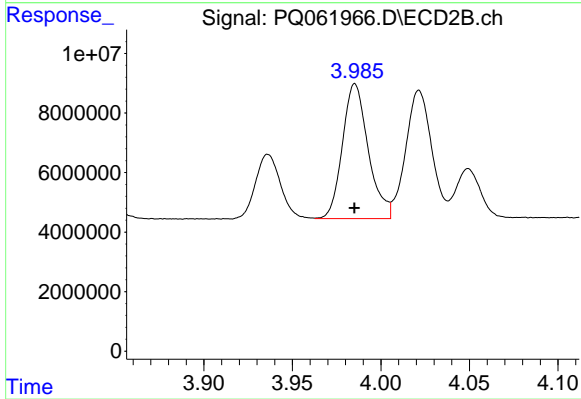
#21 AR-1248-1

R.T.: 3.760 min
 Delta R.T.: 0.000 min
 Response: 30806423
 Conc: 492.74 ng/ml



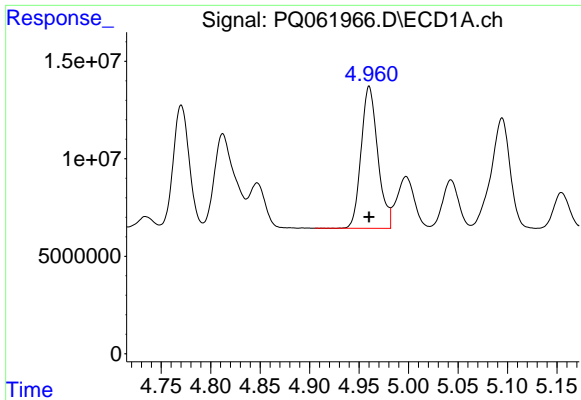
#22 AR-1248-2

R.T.: 4.770 min
 Delta R.T.: 0.000 min
 Response: 70295667
 Conc: 489.31 ng/ml



#22 AR-1248-2

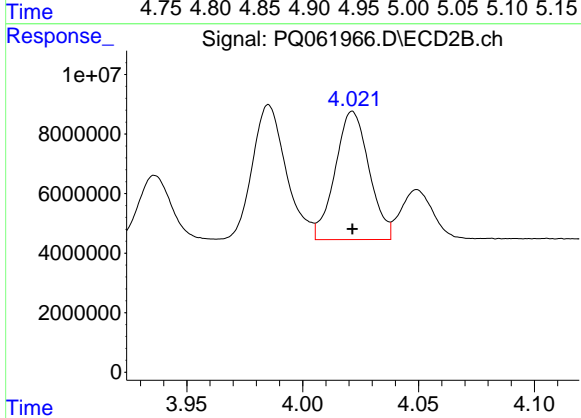
R.T.: 3.985 min
 Delta R.T.: 0.000 min
 Response: 45998083
 Conc: 490.55 ng/ml



#23 AR-1248-3

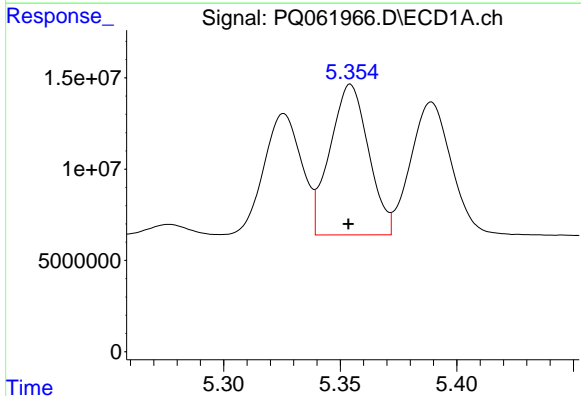
R.T.: 4.960 min
Delta R.T.: 0.000 min
Response: 85243004
Conc: 490.71 ng/ml

Instrument :
ECD_Q
ClientSampleId :
AR1248CCC500



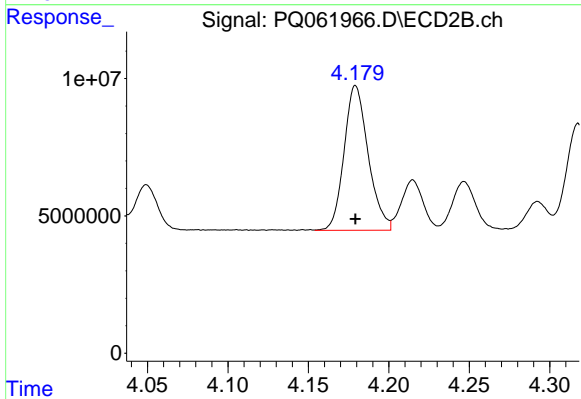
#23 AR-1248-3

R.T.: 4.022 min
Delta R.T.: 0.000 min
Response: 43949594
Conc: 485.40 ng/ml



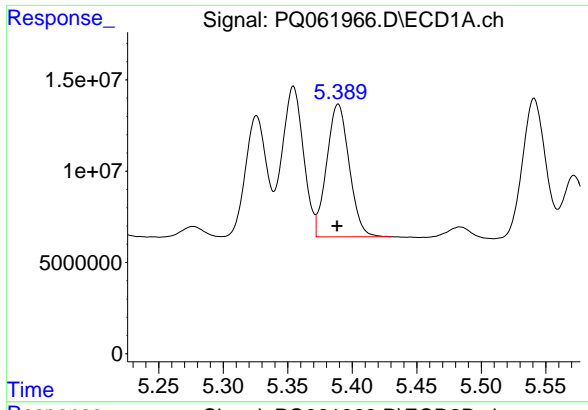
#24 AR-1248-4

R.T.: 5.354 min
Delta R.T.: 0.000 min
Response: 94730230
Conc: 493.57 ng/ml



#24 AR-1248-4

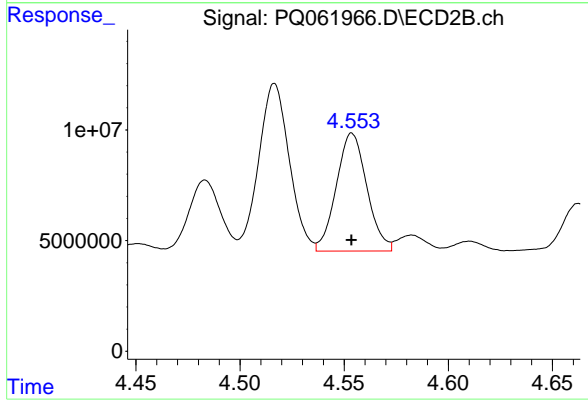
R.T.: 4.179 min
Delta R.T.: 0.000 min
Response: 54910438
Conc: 486.62 ng/ml



#25 AR-1248-5

R.T.: 5.389 min
 Delta R.T.: 0.000 min
 Response: 88243271
 Conc: 487.20 ng/ml

Instrument :
 ECD_Q
 ClientSampleId :
 AR1248CCC500



#25 AR-1248-5

R.T.: 4.554 min
 Delta R.T.: 0.000 min
 Response: 54482777
 Conc: 486.31 ng/ml