

Data Path : Z:\pestpcbsrv\HPCHEM1\ECD_Q\Data\PQ070723\
 Data File : PQ062022.D
 Signal(s) : Signal #1: ECD1A.ch Signal #2: ECD2B.ch
 Acq On : 07 Jul 2023 21:30
 Operator : YP\AJ
 Sample : 03525-02
 Misc :
 ALS Vial : 33 Sample Multiplier: 1

Instrument :
 ECD_Q
 ClientSampleId :

Integration File signal 1: autoint1.e
 Integration File signal 2: autoint2.e
 Quant Time: Jul 08 03:26:07 2023
 Quant Method : Z:\pestpcbsrv\HPCHEM1\ECD_Q\Method\PQ070123.M
 Quant Title : GC EXTRACTABLES
 QLast Update : Tue Jul 04 05:32:27 2023
 Response via : Initial Calibration
 Integrator: ChemStation

Volume Inj. : 2 µl
 Signal #1 Phase : ZB-MR1 Signal #2 Phase: ZB-MR2
 Signal #1 Info : 30Mx0.32mmx 0.50µ Signal #2 Info : 30M x 0.32mm x 0.25µm

Compound	RT#1	RT#2	Resp#1	Resp#2	ng/ml	ng/ml

System Monitoring Compounds						
1) SA Tetrachlo...	3.404	2.759	66585070	40906472	13.650	16.303
2) SA Decachlor...	8.582	7.528	46076060	41216055	12.683	12.369
Target Compounds						
3) L1 AR-1016-1	4.472f	3.763	212422	510341	1.290	5.156 #
4) L1 AR-1016-2	4.538	3.779	310118	778125	1.254	5.396 #
5) L1 AR-1016-3	4.592	3.935	1844467	229570	12.102	3.043 #
6) L1 AR-1016-4	4.652	3.977	368041	632420	2.936	9.629 #
7) L1 AR-1016-5	4.944	4.186	1843558	1180480	15.146	14.399
8) L2 AR-1221-1	3.589	2.967	5354693	382858	89.085	11.603 #
9) L2 AR-1221-2	3.681	3.023	2149375	743373	47.835	29.267 #
10) L2 AR-1221-3	3.755	3.106	3678826	1245333	26.180	16.154 #
11) L3 AR-1232-1	3.755	3.106	3678826	1245333	34.837	21.734 #
12) L3 AR-1232-2	4.235	3.779	3068458	778125	51.875	11.691 #
13) L3 AR-1232-3	4.538	3.935	310118	229570	2.742	6.644 #
14) L3 AR-1232-4	4.652	4.022	368041	32750	6.495	1.101 #
15) L3 AR-1232-5	4.784	4.186	619953	1180480	15.479	33.103 #
16) L4 AR-1242-1	4.472f	3.758	212422	439327	1.625	5.681 #
17) L4 AR-1242-2	4.538	3.779	310118	778125	1.597	7.000 #
18) L4 AR-1242-3	4.592	3.935	1844467	229570	15.263	3.919 #
19) L4 AR-1242-4	4.652	4.022	368041	32750	3.775	0.559 #
20) L4 AR-1242-5	5.406	4.521	531811	1131224	5.555	13.647 #
21) L5 AR-1248-1	4.472f	3.758	212422	439327	2.043	7.027 #
22) L5 AR-1248-2	4.784	3.977	619953	632420	4.315	6.744 #
23) L5 AR-1248-3	4.944	4.022	1843558	32750	10.613	0.362 #
24) L5 AR-1248-4	5.359	4.186	4802004	1180480	25.019	10.462 #
25) L5 AR-1248-5	5.406	4.552	531811	517421	2.936	4.618 #
26) L6 AR-1254-1	5.329	4.521	1003568	1131224	5.401	7.006 #
27) L6 AR-1254-2	5.558	4.657	719801	246612	2.476	1.675 #
28) L6 AR-1254-3	5.893	5.058	2531780	1907988	8.243	8.164
29) L6 AR-1254-4	6.194	5.269	1367144	1719494	5.888	11.282 #
30) L6 AR-1254-5	6.602	5.683	669715	461672	2.607	2.000
31) L7 AR-1260-1	6.072	5.183	157926	2107772	0.669	12.655 #
32) L7 AR-1260-2	6.308	5.350	2619376	1448987	9.069	6.968
33) L7 AR-1260-3	6.653	5.492	1932383	803287	10.944	4.129 #
34) L7 AR-1260-4	6.888	5.959	423383	1206801	2.010	8.274 #
35) L7 AR-1260-5	7.202	6.205	251891	332359	0.613	1.001 #
36) L8 AR-1262-1	6.653	5.728	1932383	273214	6.337	1.175 #
37) L8 AR-1262-2	7.202	5.959	251891	1206801	0.478	5.582 #
38) L8 AR-1262-3	7.447f	6.495	153215	293369	0.435	1.683 #
39) L8 AR-1262-4	7.549	6.541	161385	650207	0.605	2.017 #
40) L8 AR-1262-5	8.076	7.054	101056	377403	0.569	2.433 #
41) L9 AR-1268-1	7.447f	6.495	153215	293369	0.270	0.623 #

Data Path : Z:\pestpcbsrv\HPCHEM1\ECD_Q\Data\PQ070723\
 Data File : PQ062022.D
 Signal(s) : Signal #1: ECD1A.ch Signal #2: ECD2B.ch
 Acq On : 07 Jul 2023 21:30
 Operator : YP\AJ
 Sample : 03525-02
 Misc :
 ALS Vial : 33 Sample Multiplier: 1

Instrument :
 ECD_Q
 ClientSampleId :

Integration File signal 1: autoint1.e
 Integration File signal 2: autoint2.e
 Quant Time: Jul 08 03:26:07 2023
 Quant Method : Z:\pestpcbsrv\HPCHEM1\ECD_Q\Method\PQ070123.M
 Quant Title : GC EXTRACTABLES
 QLast Update : Tue Jul 04 05:32:27 2023
 Response via : Initial Calibration
 Integrator: ChemStation

Volume Inj. : 2 µl
 Signal #1 Phase : ZB-MR1 Signal #2 Phase: ZB-MR2
 Signal #1 Info : 30Mx0.32mmx 0.50µ Signal #2 Info : 30M x 0.32mm x 0.25µm

	Compound	RT#1	RT#2	Resp#1	Resp#2	ng/ml	ng/ml
42)	L9 AR-1268-2	7.549	6.541	161385	650207	0.317	1.535 #
43)	L9 AR-1268-3	7.782f	6.760	89598	711468	0.210	1.932 #
44)	L9 AR-1268-4	8.076	7.054	101056	377403	0.552	2.360 #
45)	L9 AR-1268-5	8.351	7.310	521473	698553	0.414	0.599 #

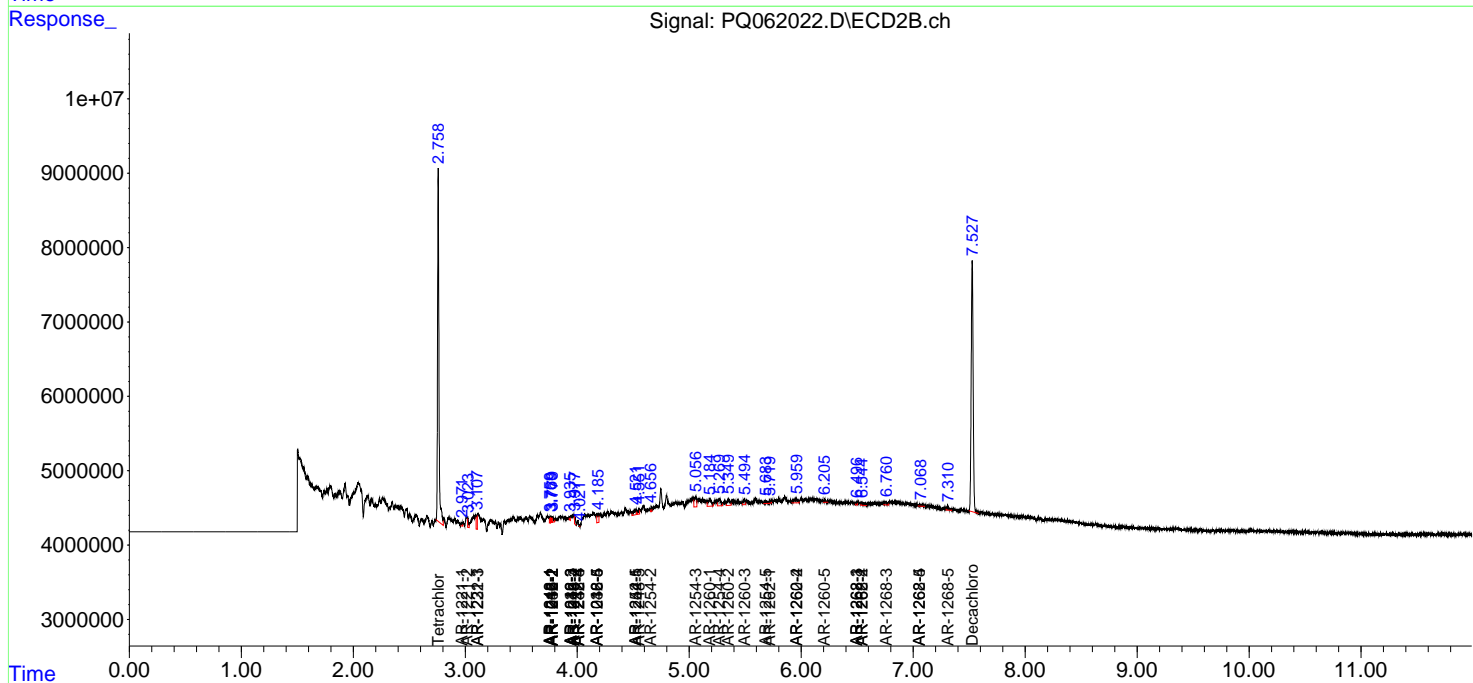
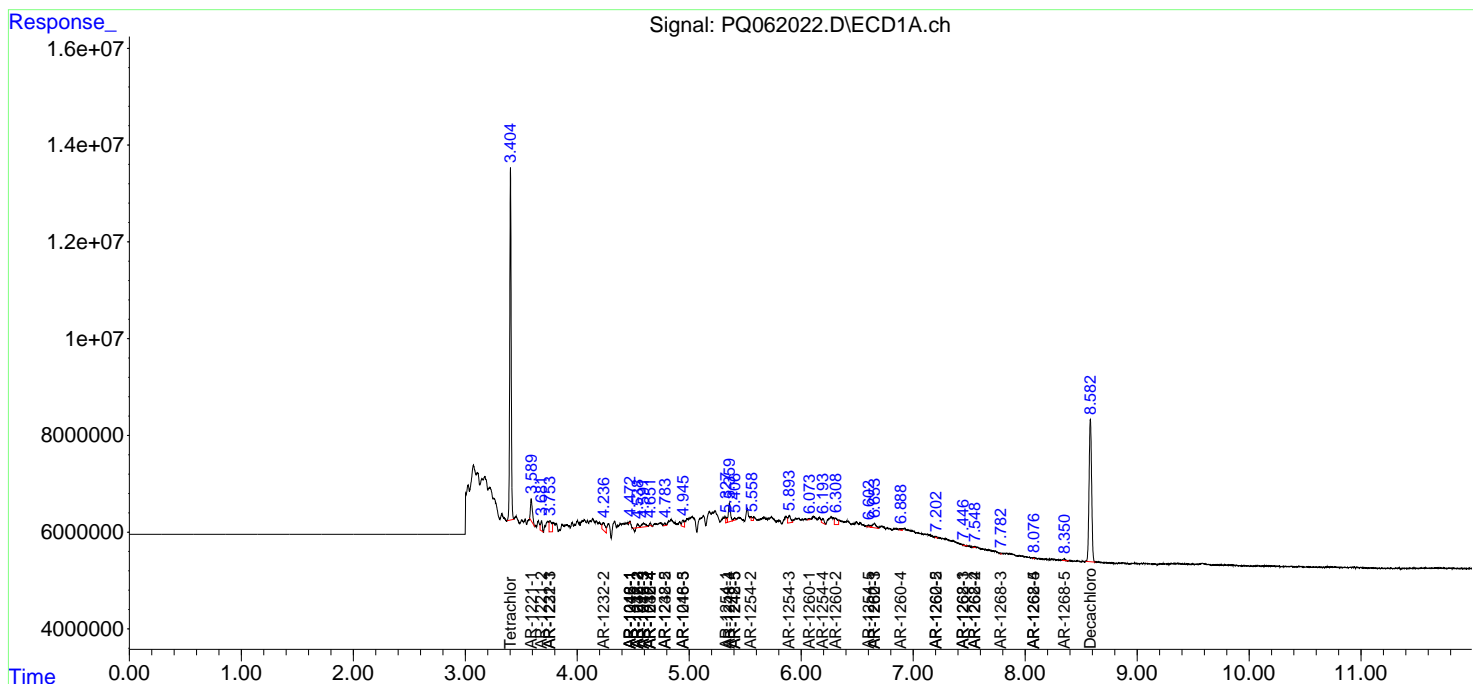
(f)=RT Delta > 1/2 Window (#)=Amounts differ by > 25% (m)=manual int.

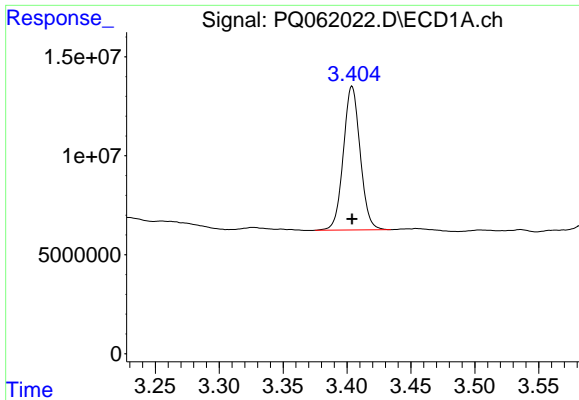
Data Path : Z:\pestpcbsrv\HPCHEM1\ECD_Q\Data\PQ070723\
 Data File : PQ062022.D
 Signal(s) : Signal #1: ECD1A.ch Signal #2: ECD2B.ch
 Acq On : 07 Jul 2023 21:30
 Operator : YP\AJ
 Sample : 03525-02
 Misc :
 ALS Vial : 33 Sample Multiplier: 1

Instrument :
 ECD_Q
 ClientSampleId :

Integration File signal 1: autoint1.e
 Integration File signal 2: autoint2.e
 Quant Time: Jul 08 03:26:07 2023
 Quant Method : Z:\pestpcbsrv\HPCHEM1\ECD_Q\Method\PQ070123.M
 Quant Title : GC EXTRACTABLES
 QLast Update : Tue Jul 04 05:32:27 2023
 Response via : Initial Calibration
 Integrator: ChemStation

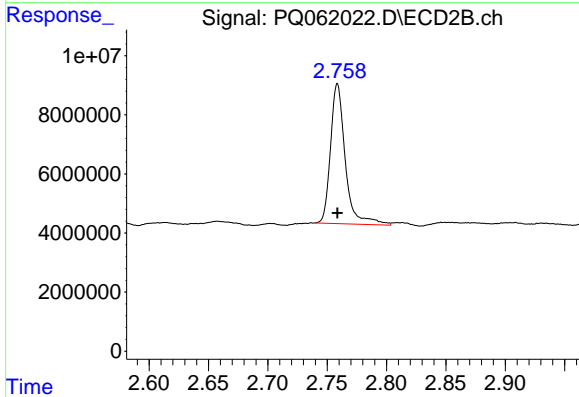
Volume Inj. : 2 µl
 Signal #1 Phase : ZB-MR1 Signal #2 Phase: ZB-MR2
 Signal #1 Info : 30Mx0.32mmx 0.50µ Signal #2 Info : 30M x 0.32mm x 0.25µm



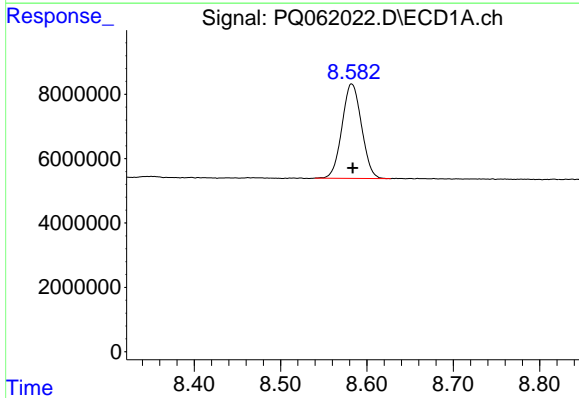


#1 Tetrachloro-m-xylene
R.T.: 3.404 min
Delta R.T.: 0.000 min
Response: 66585070
Conc: 13.65 ng/ml

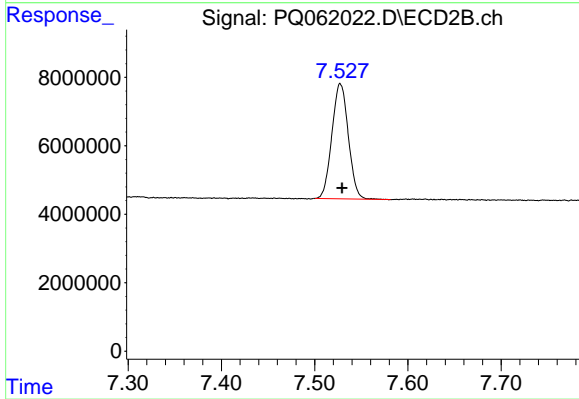
Instrument :
ECD_Q
ClientSampleId :



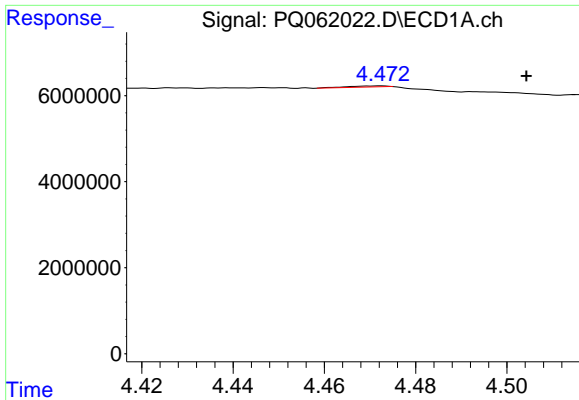
#1 Tetrachloro-m-xylene
R.T.: 2.759 min
Delta R.T.: 0.000 min
Response: 40906472
Conc: 16.30 ng/ml



#2 Decachlorobiphenyl
R.T.: 8.582 min
Delta R.T.: -0.001 min
Response: 46076060
Conc: 12.68 ng/ml



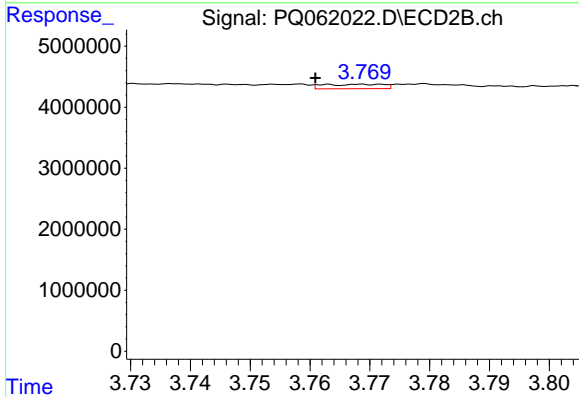
#2 Decachlorobiphenyl
R.T.: 7.528 min
Delta R.T.: -0.002 min
Response: 41216055
Conc: 12.37 ng/ml



#3 AR-1016-1

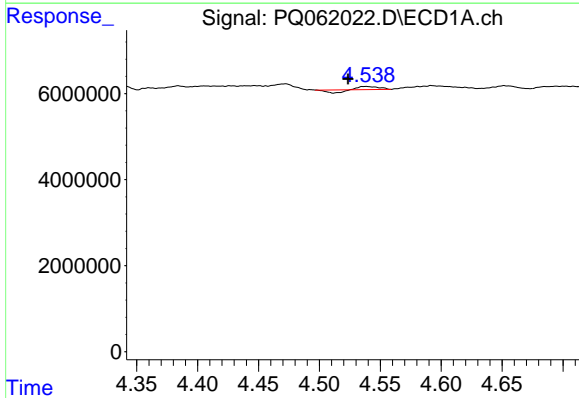
R.T.: 4.472 min
 Delta R.T.: -0.033 min
 Response: 212422
 Conc: 1.29 ng/ml

Instrument :
 ECD_Q
 ClientSampleId :



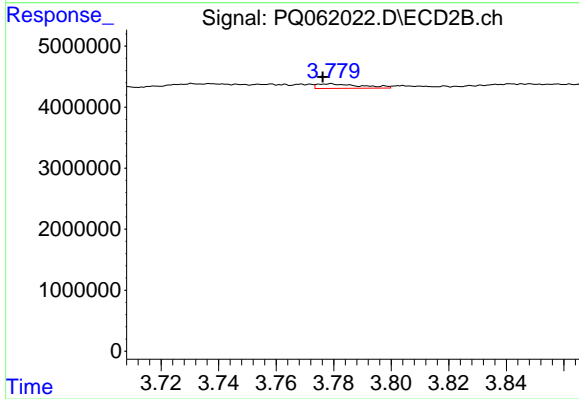
#3 AR-1016-1

R.T.: 3.763 min
 Delta R.T.: 0.002 min
 Response: 510341
 Conc: 5.16 ng/ml



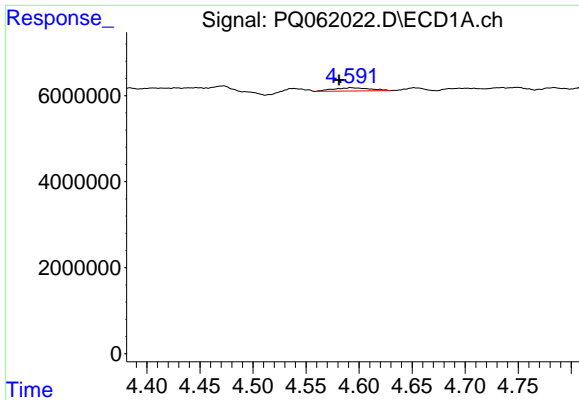
#4 AR-1016-2

R.T.: 4.538 min
 Delta R.T.: 0.014 min
 Response: 310118
 Conc: 1.25 ng/ml



#4 AR-1016-2

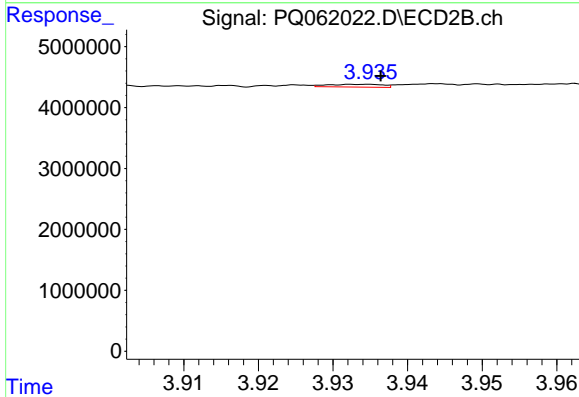
R.T.: 3.779 min
 Delta R.T.: 0.003 min
 Response: 778125
 Conc: 5.40 ng/ml



#5 AR-1016-3

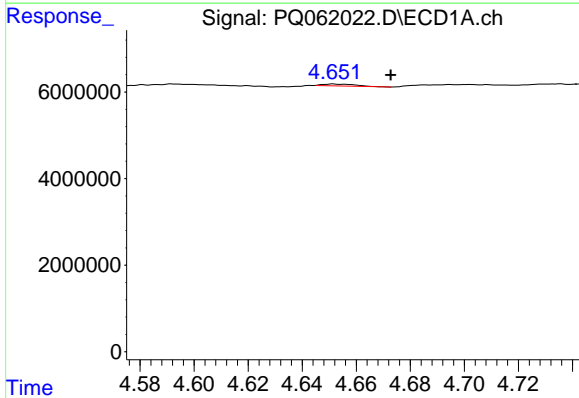
R.T.: 4.592 min
 Delta R.T.: 0.011 min
 Response: 1844467
 Conc: 12.10 ng/ml

Instrument :
 ECD_Q
 ClientSampleId :



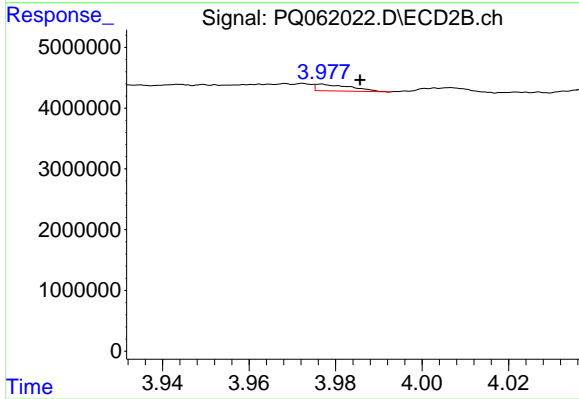
#5 AR-1016-3

R.T.: 3.935 min
 Delta R.T.: -0.002 min
 Response: 229570
 Conc: 3.04 ng/ml



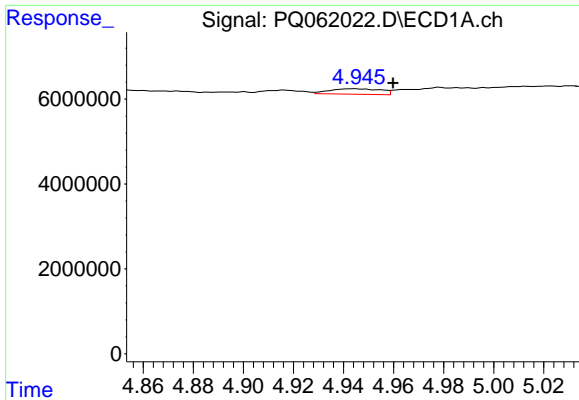
#6 AR-1016-4

R.T.: 4.652 min
 Delta R.T.: -0.021 min
 Response: 368041
 Conc: 2.94 ng/ml



#6 AR-1016-4

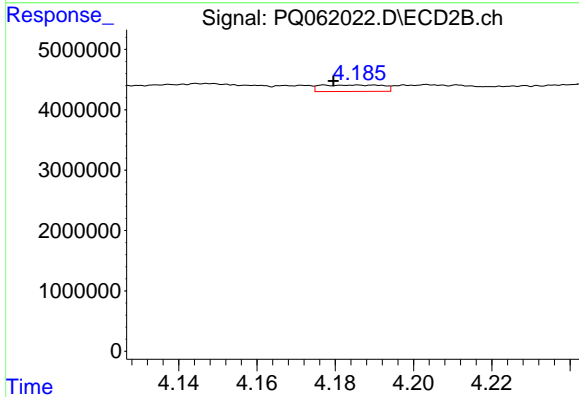
R.T.: 3.977 min
 Delta R.T.: -0.009 min
 Response: 632420
 Conc: 9.63 ng/ml



#7 AR-1016-5

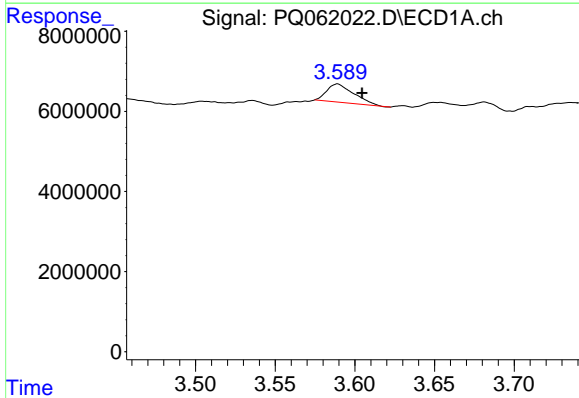
R.T.: 4.944 min
 Delta R.T.: -0.016 min
 Response: 1843558
 Conc: 15.15 ng/ml

Instrument :
 ECD_Q
 ClientSampleId :



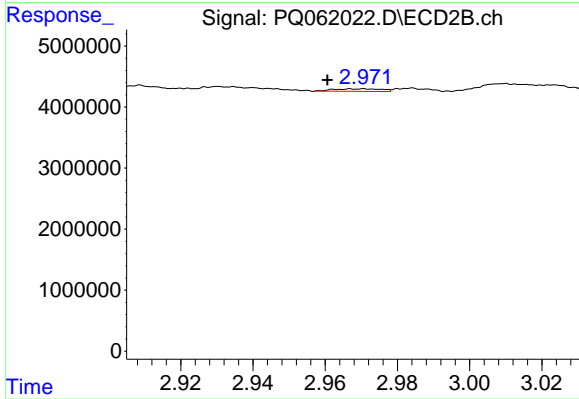
#7 AR-1016-5

R.T.: 4.186 min
 Delta R.T.: 0.006 min
 Response: 1180480
 Conc: 14.40 ng/ml



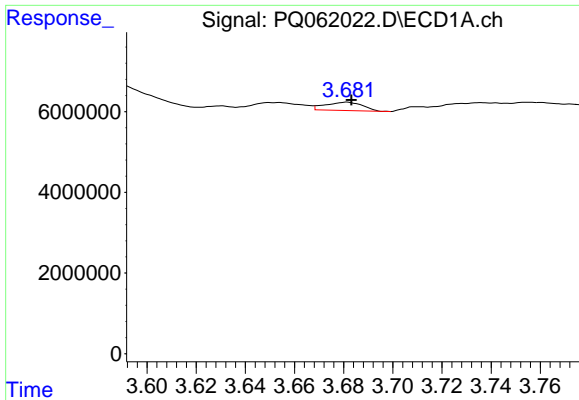
#8 AR-1221-1

R.T.: 3.589 min
 Delta R.T.: -0.015 min
 Response: 5354693
 Conc: 89.08 ng/ml



#8 AR-1221-1

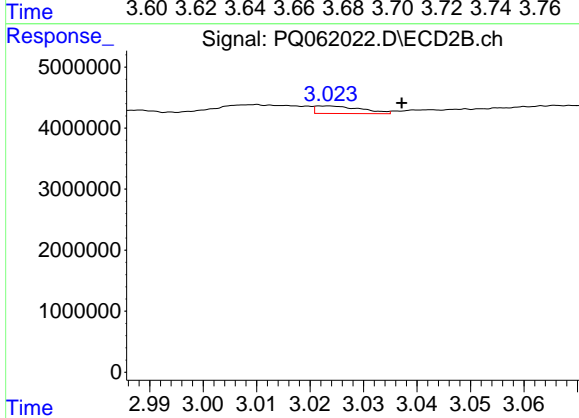
R.T.: 2.967 min
 Delta R.T.: 0.006 min
 Response: 382858
 Conc: 11.60 ng/ml



#9 AR-1221-2

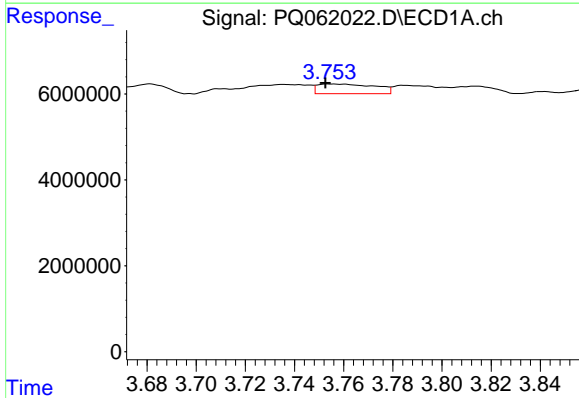
R.T.: 3.681 min
 Delta R.T.: -0.002 min
 Response: 2149375
 Conc: 47.84 ng/ml

Instrument :
 ECD_Q
 ClientSampleId :



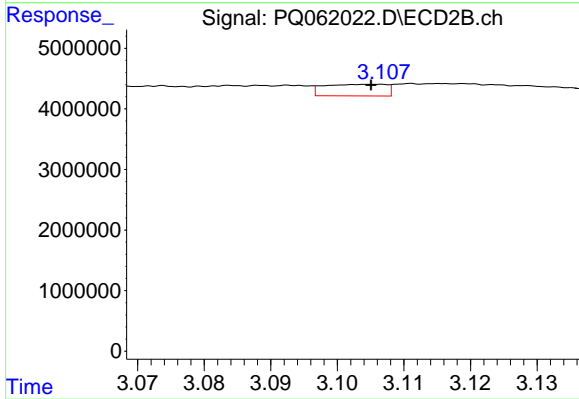
#9 AR-1221-2

R.T.: 3.023 min
 Delta R.T.: -0.014 min
 Response: 743373
 Conc: 29.27 ng/ml



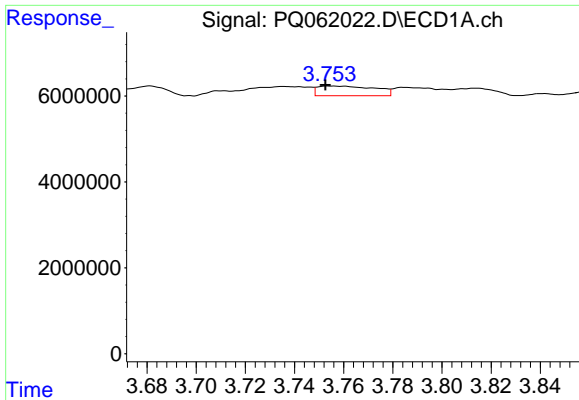
#10 AR-1221-3

R.T.: 3.755 min
 Delta R.T.: 0.002 min
 Response: 3678826
 Conc: 26.18 ng/ml



#10 AR-1221-3

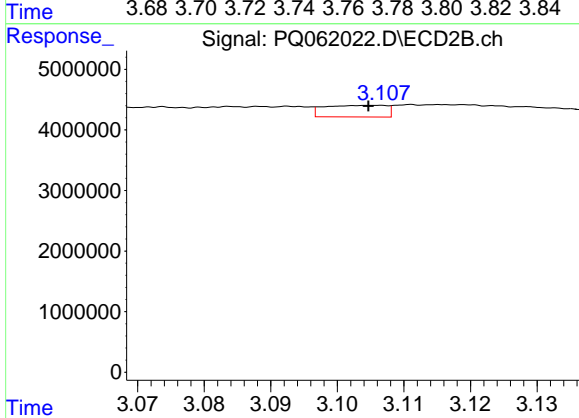
R.T.: 3.106 min
 Delta R.T.: 0.001 min
 Response: 1245333
 Conc: 16.15 ng/ml



#11 AR-1232-1

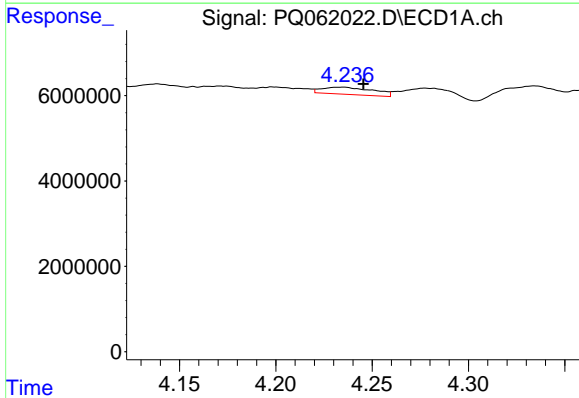
R.T.: 3.755 min
 Delta R.T.: 0.002 min
 Response: 3678826
 Conc: 34.84 ng/ml

Instrument :
 ECD_Q
 ClientSampleId :



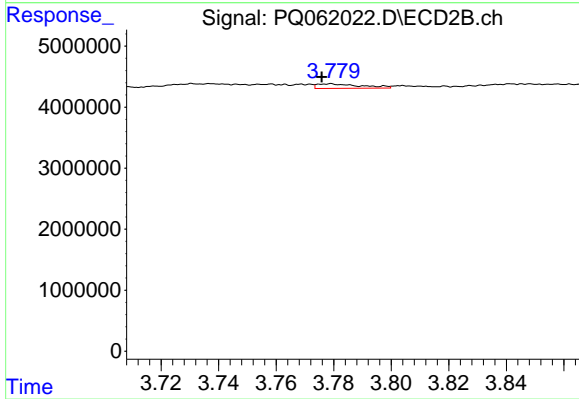
#11 AR-1232-1

R.T.: 3.106 min
 Delta R.T.: 0.001 min
 Response: 1245333
 Conc: 21.73 ng/ml



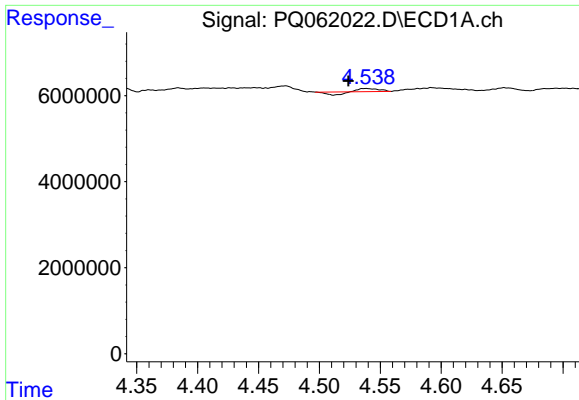
#12 AR-1232-2

R.T.: 4.235 min
 Delta R.T.: -0.011 min
 Response: 3068458
 Conc: 51.87 ng/ml



#12 AR-1232-2

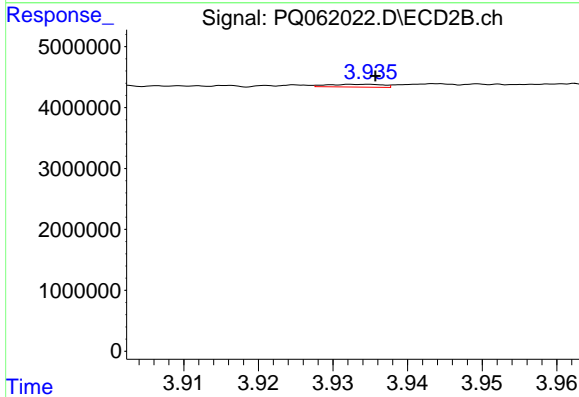
R.T.: 3.779 min
 Delta R.T.: 0.003 min
 Response: 778125
 Conc: 11.69 ng/ml



#13 AR-1232-3

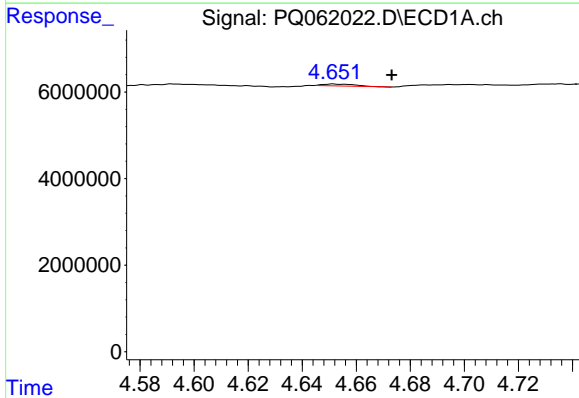
R.T.: 4.538 min
 Delta R.T.: 0.014 min
 Response: 310118
 Conc: 2.74 ng/ml

Instrument :
 ECD_Q
 ClientSampleId :



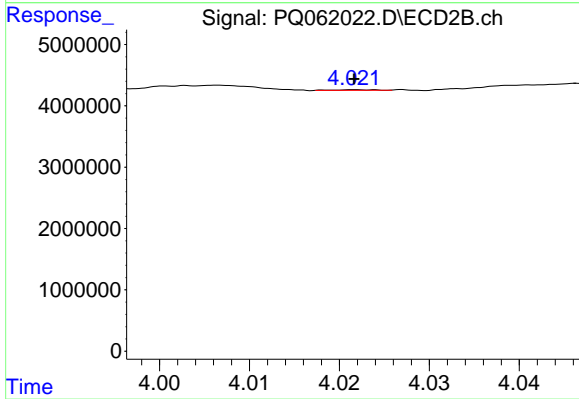
#13 AR-1232-3

R.T.: 3.935 min
 Delta R.T.: 0.000 min
 Response: 229570
 Conc: 6.64 ng/ml



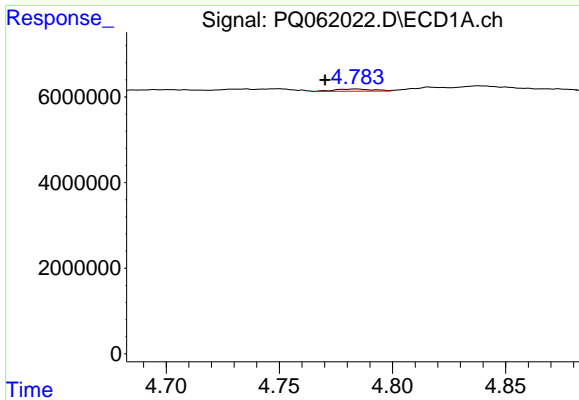
#14 AR-1232-4

R.T.: 4.652 min
 Delta R.T.: -0.021 min
 Response: 368041
 Conc: 6.49 ng/ml



#14 AR-1232-4

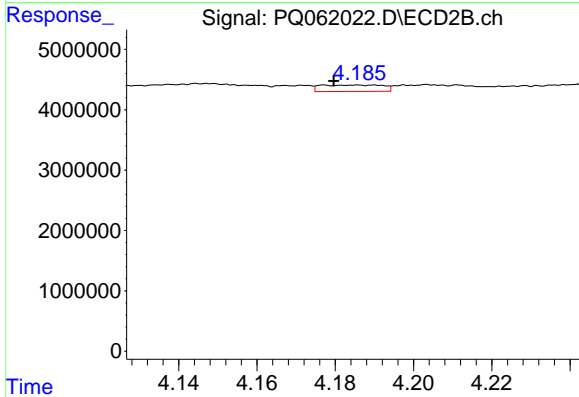
R.T.: 4.022 min
 Delta R.T.: 0.000 min
 Response: 32750
 Conc: 1.10 ng/ml



#15 AR-1232-5

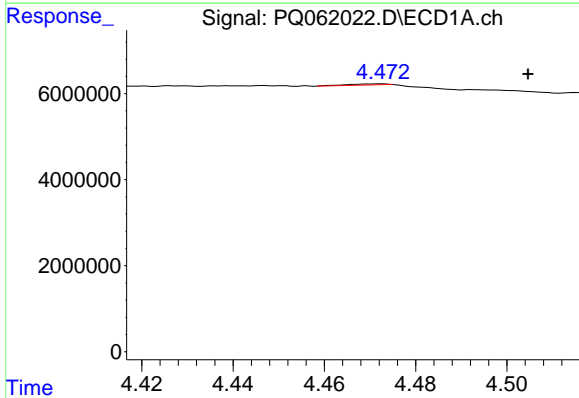
R.T.: 4.784 min
 Delta R.T.: 0.014 min
 Response: 619953
 Conc: 15.48 ng/ml

Instrument :
 ECD_Q
 ClientSampleId :



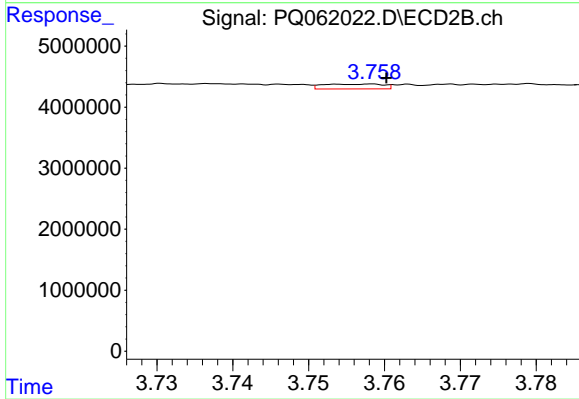
#15 AR-1232-5

R.T.: 4.186 min
 Delta R.T.: 0.006 min
 Response: 1180480
 Conc: 33.10 ng/ml



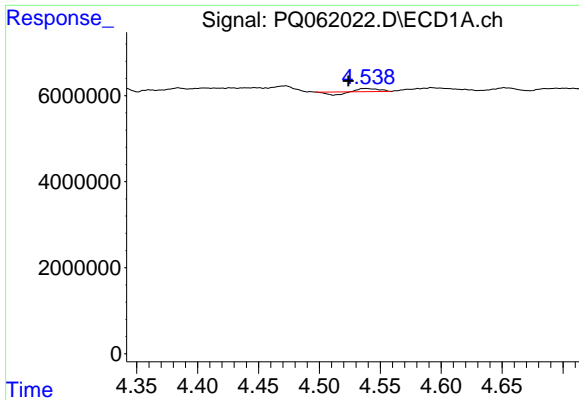
#16 AR-1242-1

R.T.: 4.472 min
 Delta R.T.: -0.033 min
 Response: 212422
 Conc: 1.63 ng/ml



#16 AR-1242-1

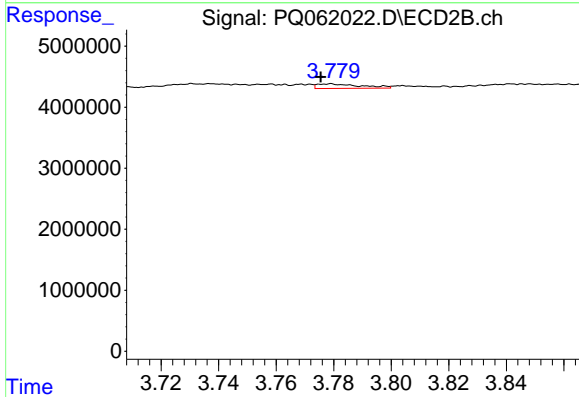
R.T.: 3.758 min
 Delta R.T.: -0.002 min
 Response: 439327
 Conc: 5.68 ng/ml



#17 AR-1242-2

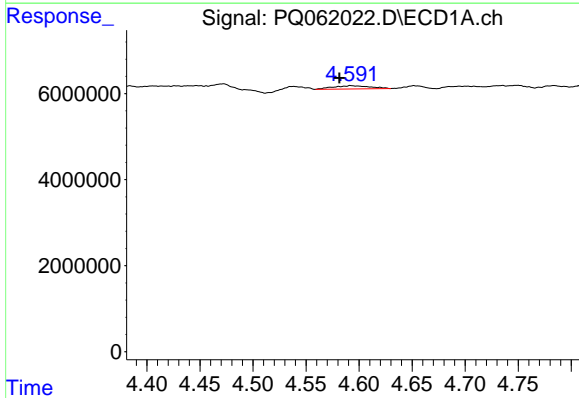
R.T.: 4.538 min
 Delta R.T.: 0.014 min
 Response: 310118
 Conc: 1.60 ng/ml

Instrument :
 ECD_Q
 ClientSampleId :



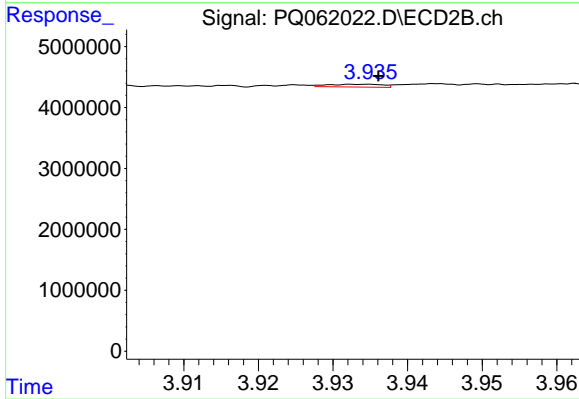
#17 AR-1242-2

R.T.: 3.779 min
 Delta R.T.: 0.004 min
 Response: 778125
 Conc: 7.00 ng/ml



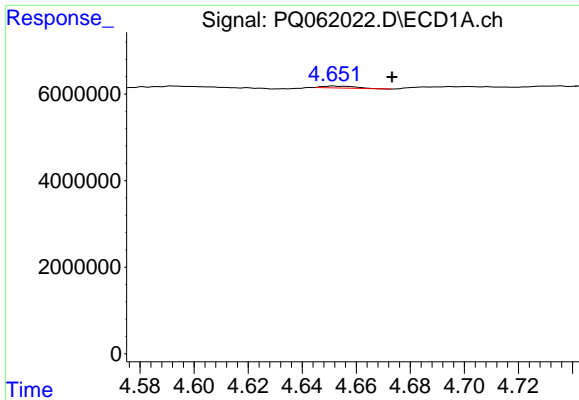
#18 AR-1242-3

R.T.: 4.592 min
 Delta R.T.: 0.011 min
 Response: 1844467
 Conc: 15.26 ng/ml



#18 AR-1242-3

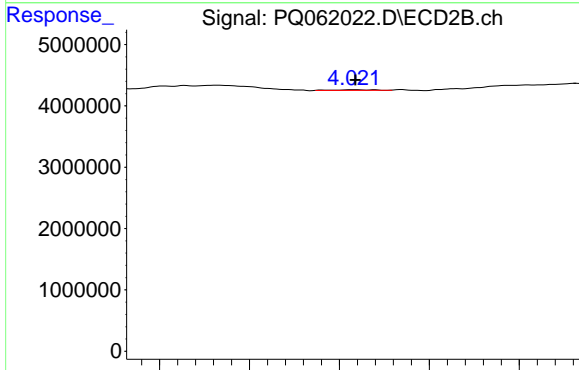
R.T.: 3.935 min
 Delta R.T.: -0.001 min
 Response: 229570
 Conc: 3.92 ng/ml



#19 AR-1242-4

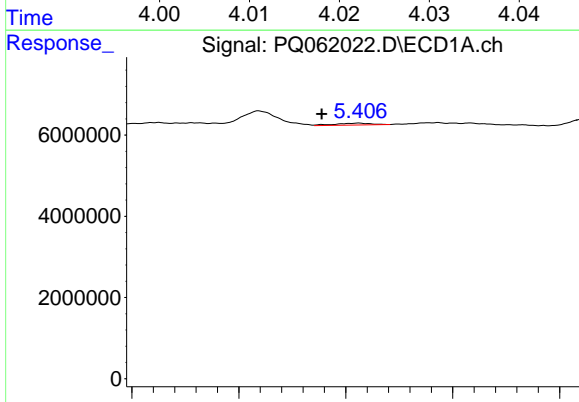
R.T.: 4.652 min
 Delta R.T.: -0.022 min
 Response: 368041
 Conc: 3.78 ng/ml

Instrument :
 ECD_Q
 ClientSampleId :



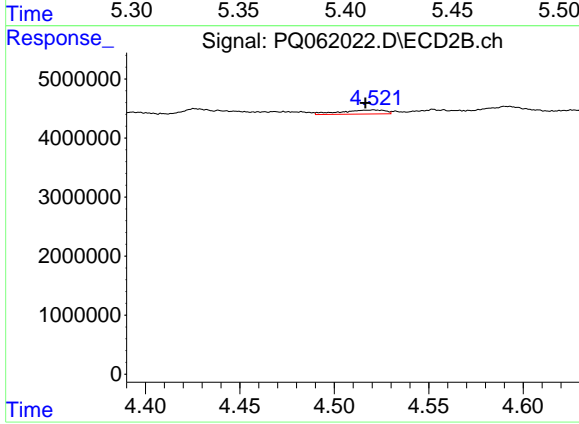
#19 AR-1242-4

R.T.: 4.022 min
 Delta R.T.: 0.000 min
 Response: 32750
 Conc: 0.56 ng/ml



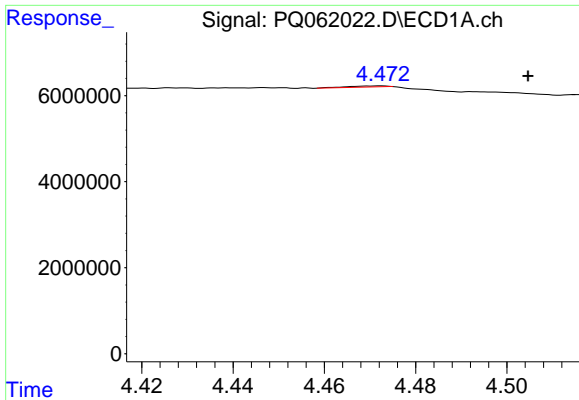
#20 AR-1242-5

R.T.: 5.406 min
 Delta R.T.: 0.017 min
 Response: 531811
 Conc: 5.56 ng/ml



#20 AR-1242-5

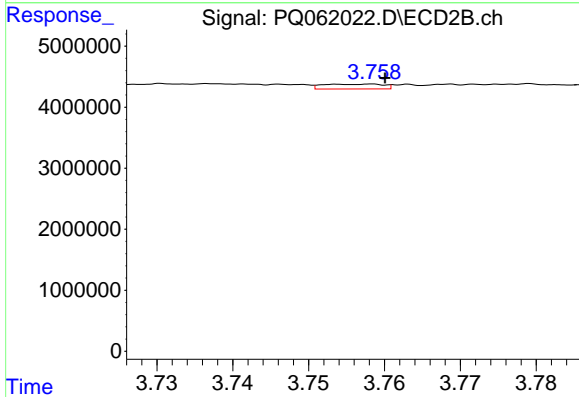
R.T.: 4.521 min
 Delta R.T.: 0.004 min
 Response: 1131224
 Conc: 13.65 ng/ml



#21 AR-1248-1

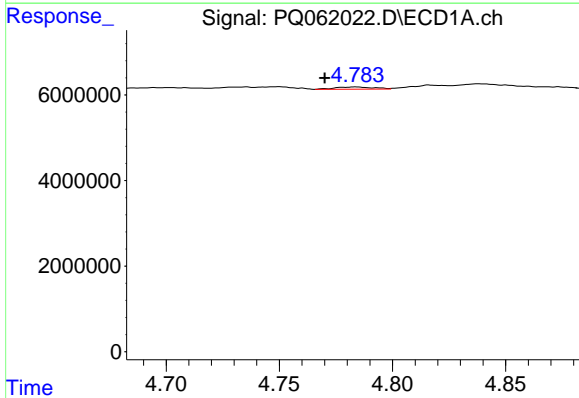
R.T.: 4.472 min
 Delta R.T.: -0.033 min
 Response: 212422
 Conc: 2.04 ng/ml

Instrument :
 ECD_Q
 ClientSampleId :



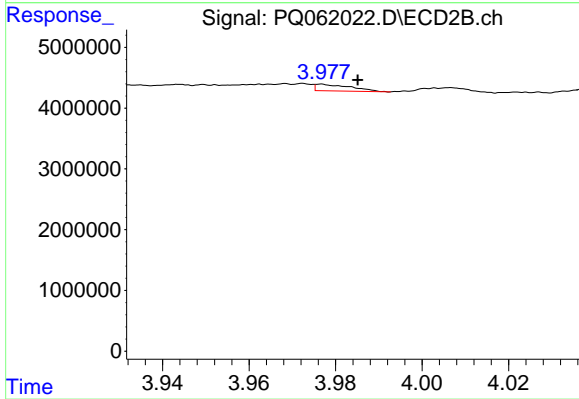
#21 AR-1248-1

R.T.: 3.758 min
 Delta R.T.: -0.002 min
 Response: 439327
 Conc: 7.03 ng/ml



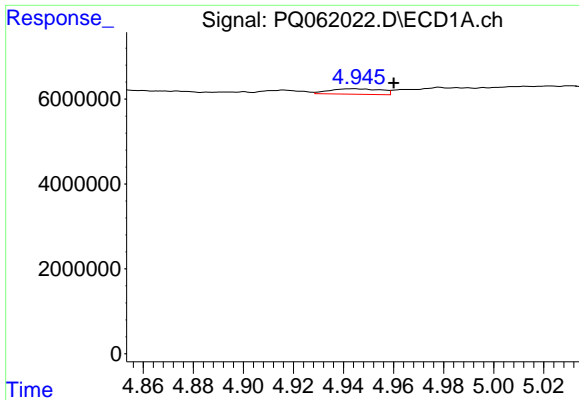
#22 AR-1248-2

R.T.: 4.784 min
 Delta R.T.: 0.014 min
 Response: 619953
 Conc: 4.32 ng/ml



#22 AR-1248-2

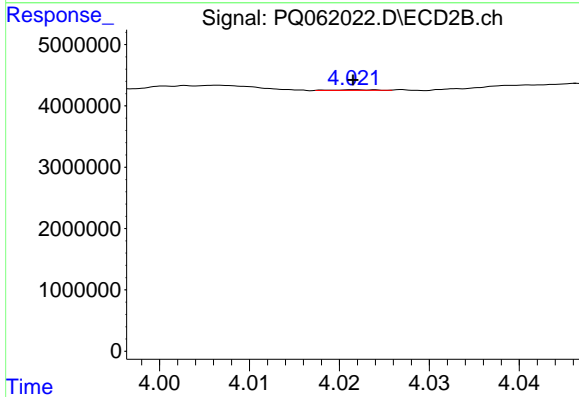
R.T.: 3.977 min
 Delta R.T.: -0.009 min
 Response: 632420
 Conc: 6.74 ng/ml



#23 AR-1248-3

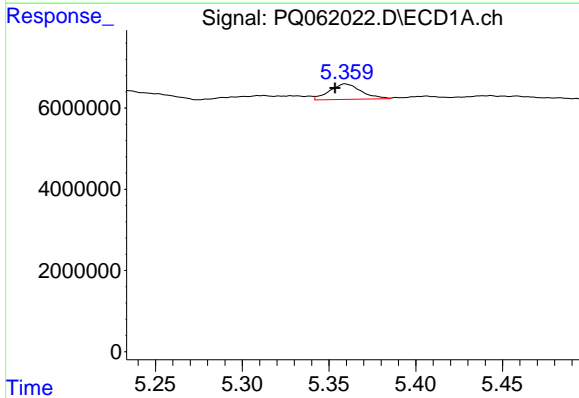
R.T.: 4.944 min
 Delta R.T.: -0.016 min
 Response: 1843558
 Conc: 10.61 ng/ml

Instrument :
 ECD_Q
 ClientSampleId :



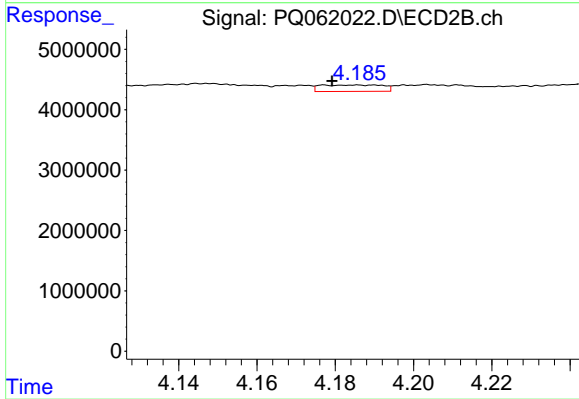
#23 AR-1248-3

R.T.: 4.022 min
 Delta R.T.: 0.000 min
 Response: 32750
 Conc: 0.36 ng/ml



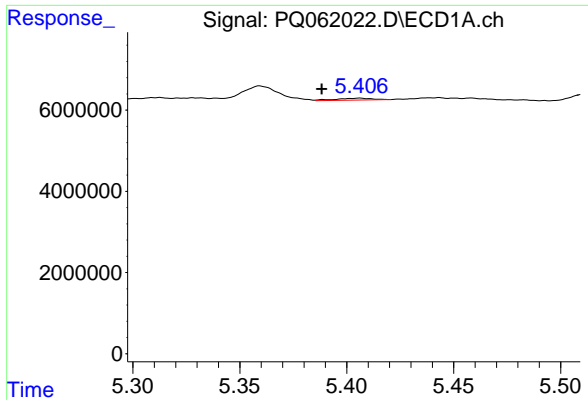
#24 AR-1248-4

R.T.: 5.359 min
 Delta R.T.: 0.006 min
 Response: 4802004
 Conc: 25.02 ng/ml



#24 AR-1248-4

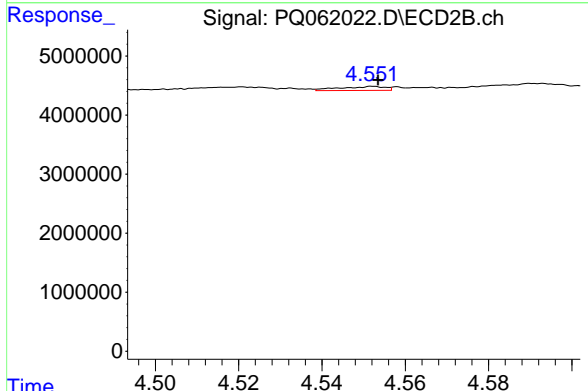
R.T.: 4.186 min
 Delta R.T.: 0.007 min
 Response: 1180480
 Conc: 10.46 ng/ml



#25 AR-1248-5

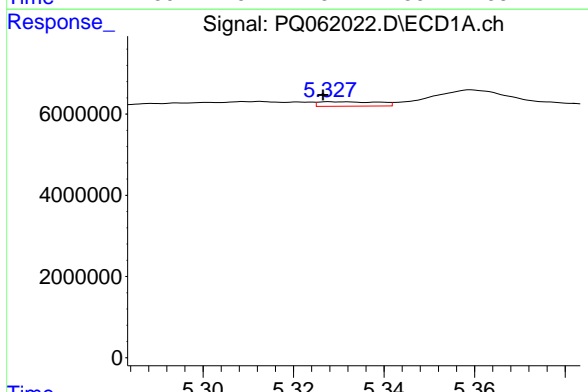
R.T.: 5.406 min
 Delta R.T.: 0.018 min
 Response: 531811
 Conc: 2.94 ng/ml

Instrument :
 ECD_Q
 ClientSampleId :



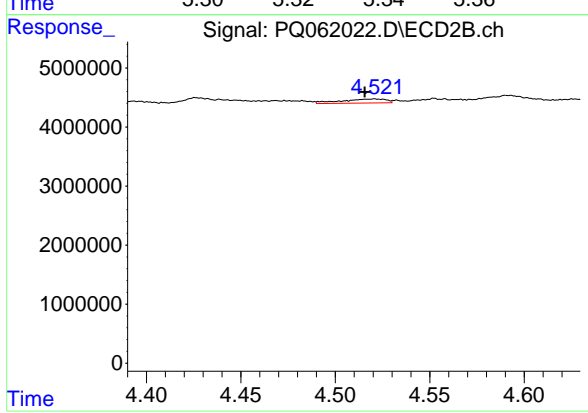
#25 AR-1248-5

R.T.: 4.552 min
 Delta R.T.: -0.001 min
 Response: 517421
 Conc: 4.62 ng/ml



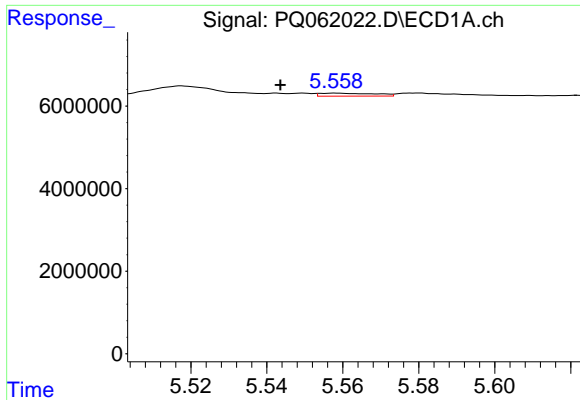
#26 AR-1254-1

R.T.: 5.329 min
 Delta R.T.: 0.002 min
 Response: 1003568
 Conc: 5.40 ng/ml



#26 AR-1254-1

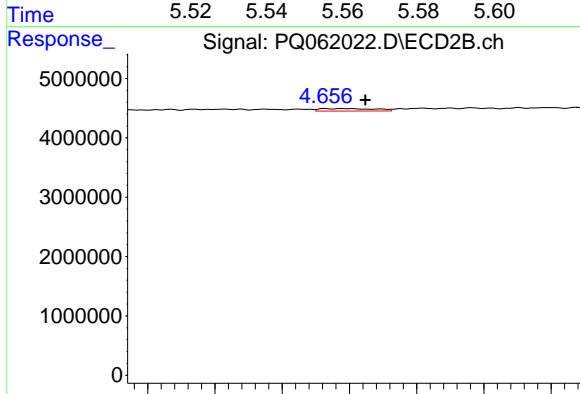
R.T.: 4.521 min
 Delta R.T.: 0.005 min
 Response: 1131224
 Conc: 7.01 ng/ml



#27 AR-1254-2

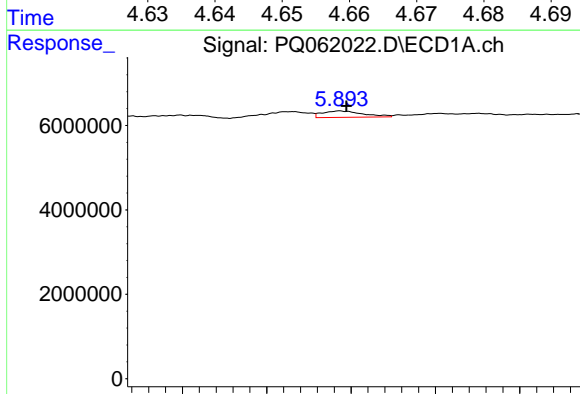
R.T.: 5.558 min
 Delta R.T.: 0.015 min
 Response: 719801
 Conc: 2.48 ng/ml

Instrument :
 ECD_Q
 ClientSampleId :



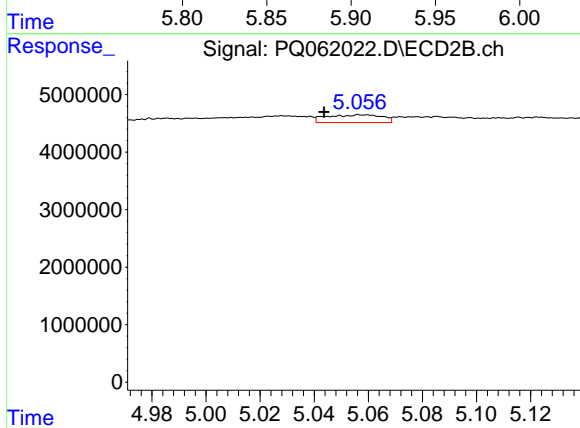
#27 AR-1254-2

R.T.: 4.657 min
 Delta R.T.: -0.006 min
 Response: 246612
 Conc: 1.68 ng/ml



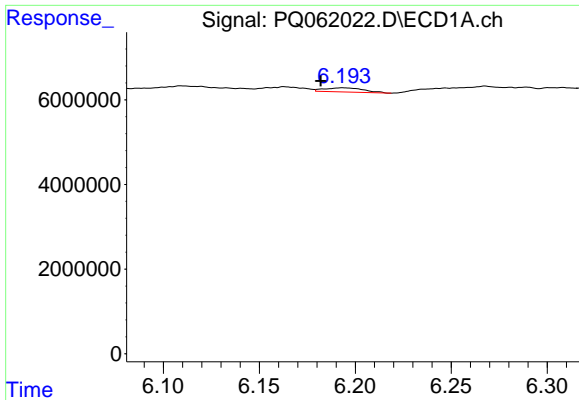
#28 AR-1254-3

R.T.: 5.893 min
 Delta R.T.: -0.004 min
 Response: 2531780
 Conc: 8.24 ng/ml



#28 AR-1254-3

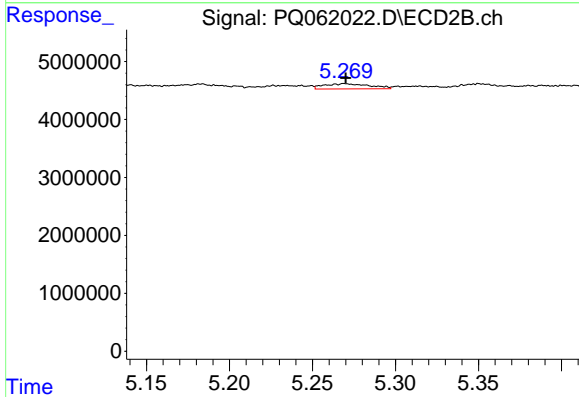
R.T.: 5.058 min
 Delta R.T.: 0.014 min
 Response: 1907988
 Conc: 8.16 ng/ml



#29 AR-1254-4

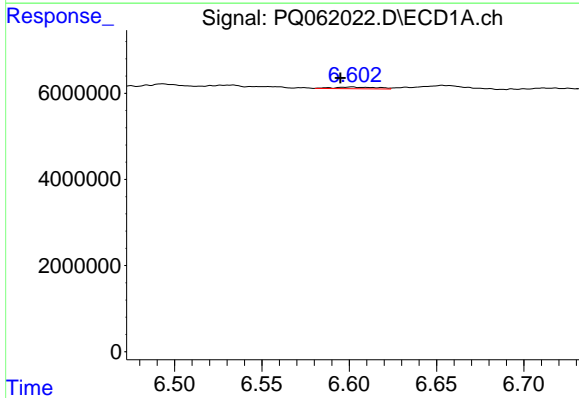
R.T.: 6.194 min
 Delta R.T.: 0.011 min
 Response: 1367144
 Conc: 5.89 ng/ml

Instrument :
 ECD_Q
 ClientSampleId :



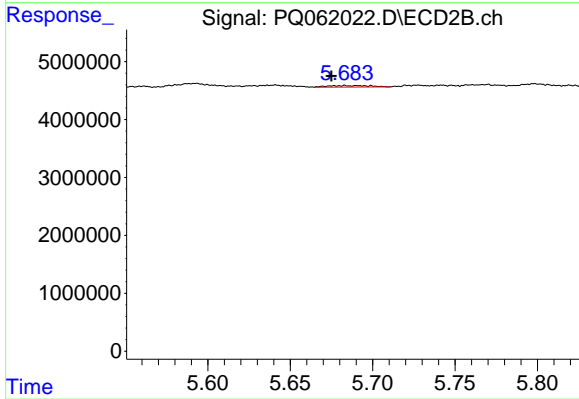
#29 AR-1254-4

R.T.: 5.269 min
 Delta R.T.: 0.000 min
 Response: 1719494
 Conc: 11.28 ng/ml



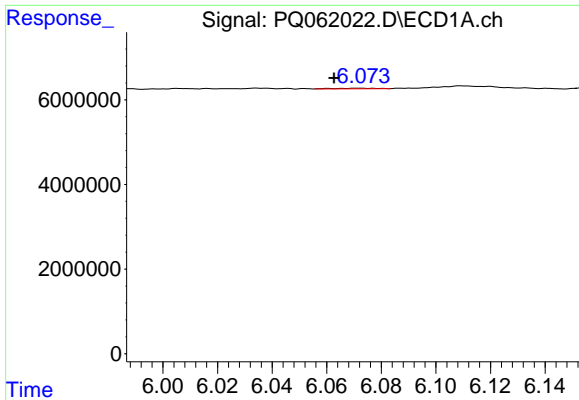
#30 AR-1254-5

R.T.: 6.602 min
 Delta R.T.: 0.007 min
 Response: 669715
 Conc: 2.61 ng/ml



#30 AR-1254-5

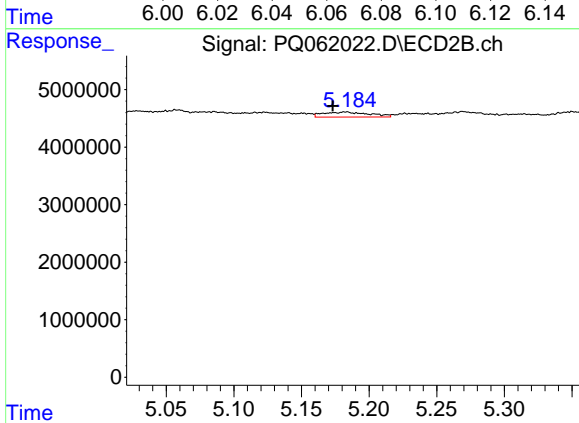
R.T.: 5.683 min
 Delta R.T.: 0.008 min
 Response: 461672
 Conc: 2.00 ng/ml



#31 AR-1260-1

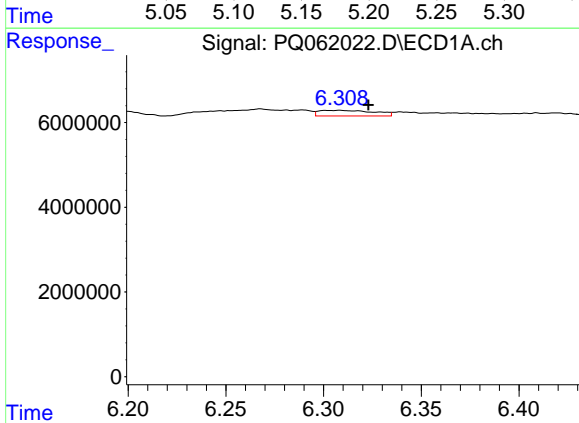
R.T.: 6.072 min
 Delta R.T.: 0.009 min
 Response: 157926
 Conc: 0.67 ng/ml

Instrument :
 ECD_Q
 ClientSampleId :



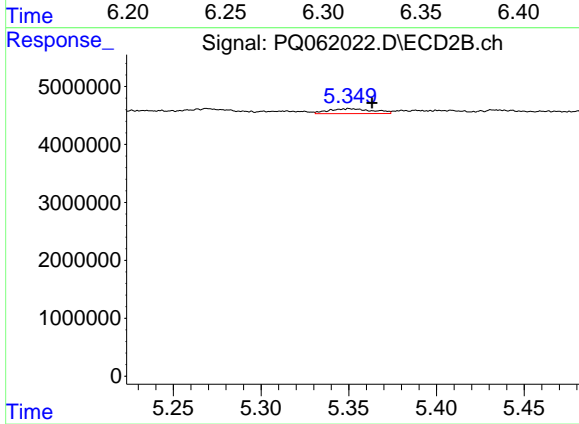
#31 AR-1260-1

R.T.: 5.183 min
 Delta R.T.: 0.010 min
 Response: 2107772
 Conc: 12.66 ng/ml



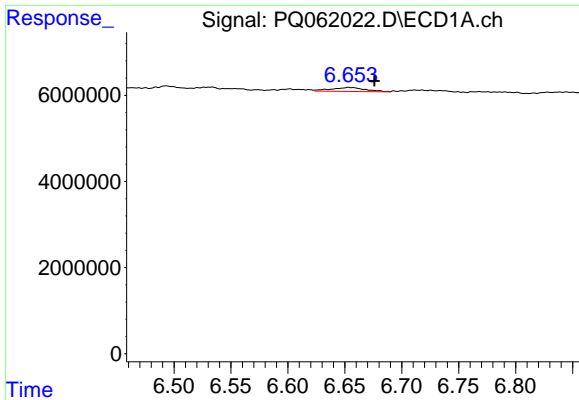
#32 AR-1260-2

R.T.: 6.308 min
 Delta R.T.: -0.015 min
 Response: 2619376
 Conc: 9.07 ng/ml



#32 AR-1260-2

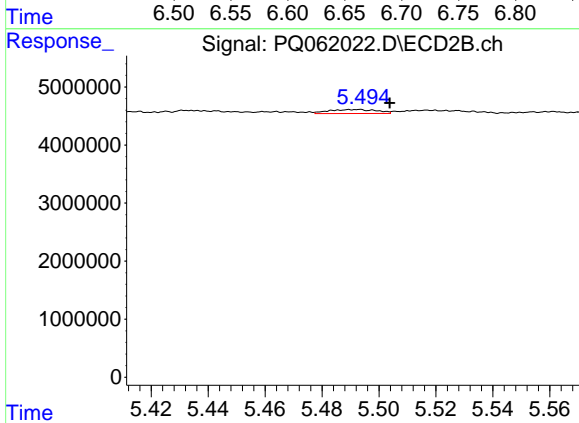
R.T.: 5.350 min
 Delta R.T.: -0.013 min
 Response: 1448987
 Conc: 6.97 ng/ml



#33 AR-1260-3

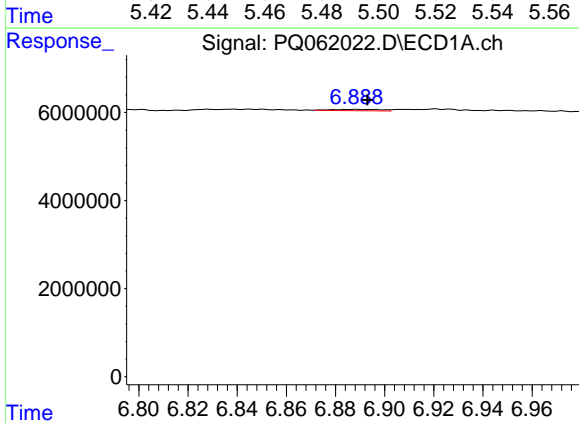
R.T.: 6.653 min
 Delta R.T.: -0.023 min
 Response: 1932383
 Conc: 10.94 ng/ml

Instrument :
 ECD_Q
 ClientSampleId :



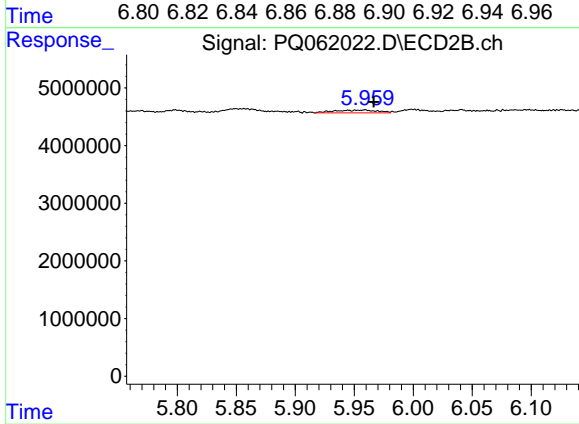
#33 AR-1260-3

R.T.: 5.492 min
 Delta R.T.: -0.012 min
 Response: 803287
 Conc: 4.13 ng/ml



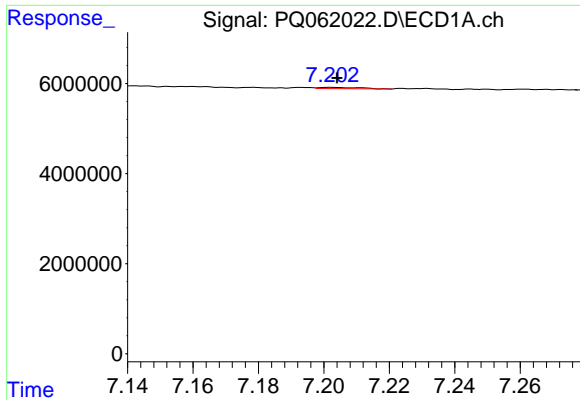
#34 AR-1260-4

R.T.: 6.888 min
 Delta R.T.: -0.005 min
 Response: 423383
 Conc: 2.01 ng/ml



#34 AR-1260-4

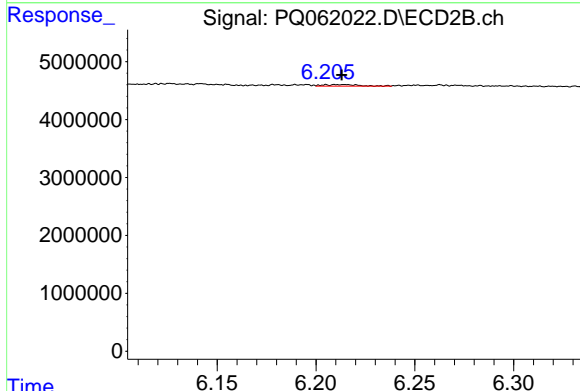
R.T.: 5.959 min
 Delta R.T.: -0.007 min
 Response: 1206801
 Conc: 8.27 ng/ml



#35 AR-1260-5

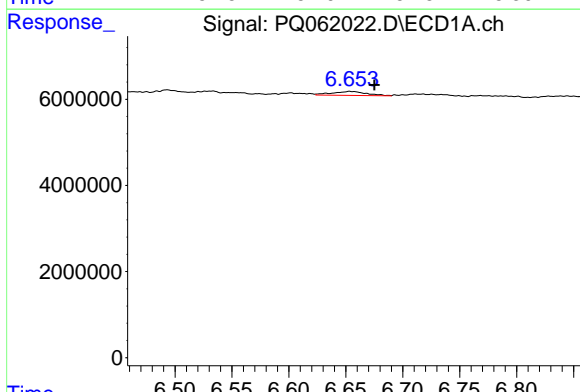
R.T.: 7.202 min
 Delta R.T.: -0.002 min
 Response: 251891
 Conc: 0.61 ng/ml

Instrument :
 ECD_Q
 ClientSampleId :



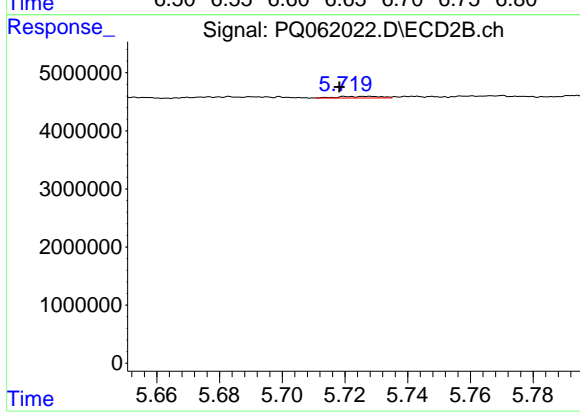
#35 AR-1260-5

R.T.: 6.205 min
 Delta R.T.: -0.008 min
 Response: 332359
 Conc: 1.00 ng/ml



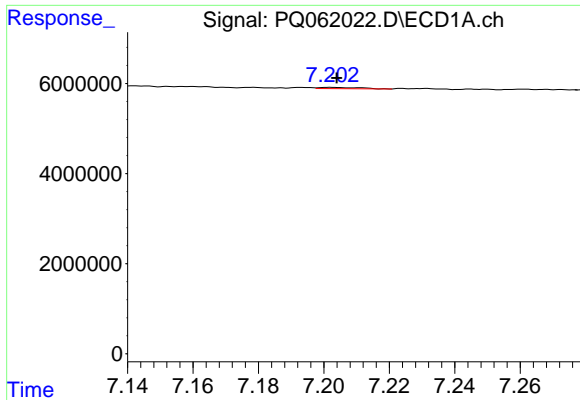
#36 AR-1262-1

R.T.: 6.653 min
 Delta R.T.: -0.022 min
 Response: 1932383
 Conc: 6.34 ng/ml



#36 AR-1262-1

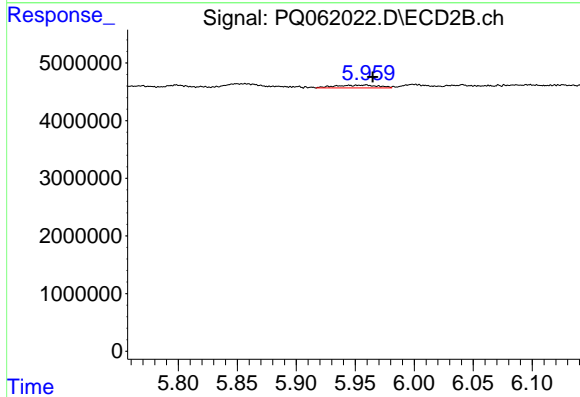
R.T.: 5.728 min
 Delta R.T.: 0.009 min
 Response: 273214
 Conc: 1.18 ng/ml



#37 AR-1262-2

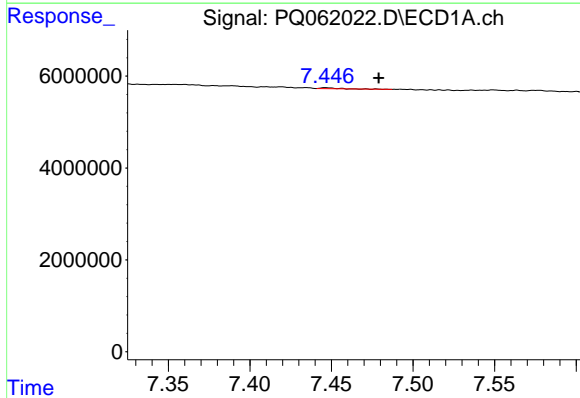
R.T.: 7.202 min
 Delta R.T.: -0.002 min
 Response: 251891
 Conc: 0.48 ng/ml

Instrument :
 ECD_Q
 ClientSampleId :



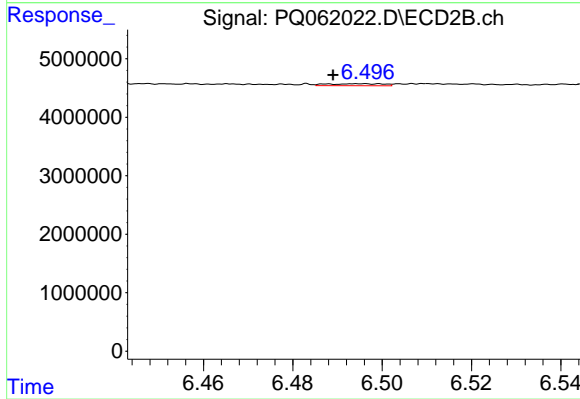
#37 AR-1262-2

R.T.: 5.959 min
 Delta R.T.: -0.005 min
 Response: 1206801
 Conc: 5.58 ng/ml



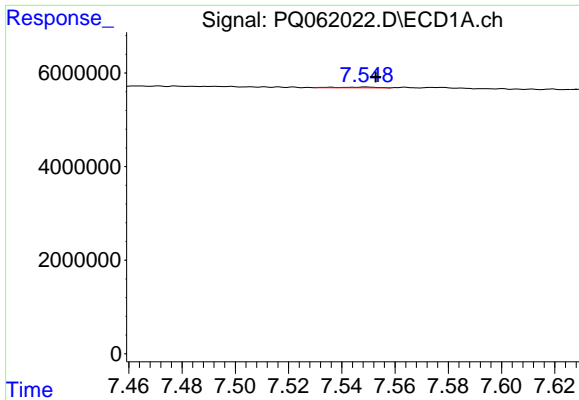
#38 AR-1262-3

R.T.: 7.447 min
 Delta R.T.: -0.032 min
 Response: 153215
 Conc: 0.43 ng/ml



#38 AR-1262-3

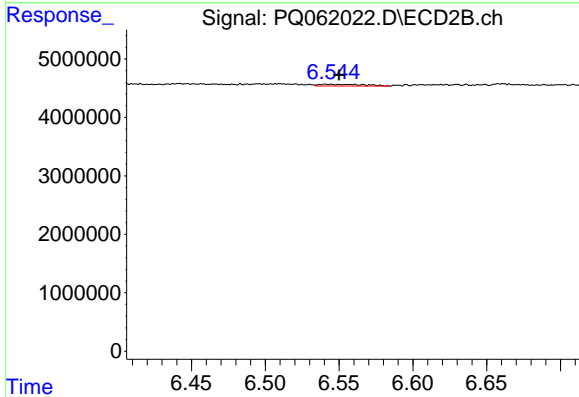
R.T.: 6.495 min
 Delta R.T.: 0.006 min
 Response: 293369
 Conc: 1.68 ng/ml



#39 AR-1262-4

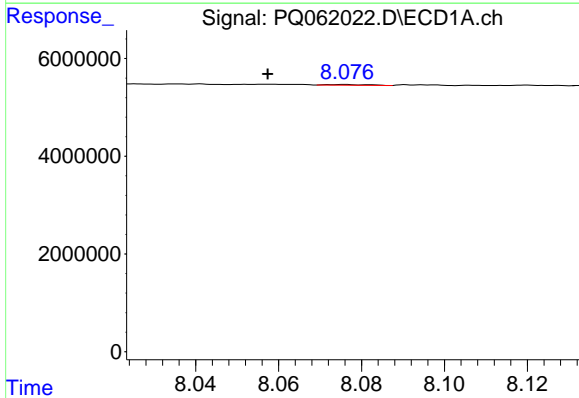
R.T.: 7.549 min
 Delta R.T.: -0.004 min
 Response: 161385
 Conc: 0.61 ng/ml

Instrument :
 ECD_Q
 ClientSampleId :



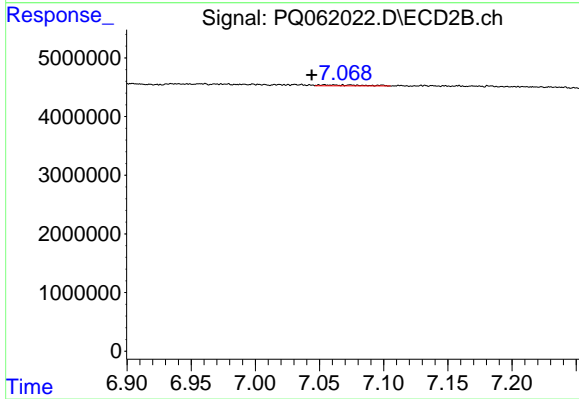
#39 AR-1262-4

R.T.: 6.541 min
 Delta R.T.: -0.009 min
 Response: 650207
 Conc: 2.02 ng/ml



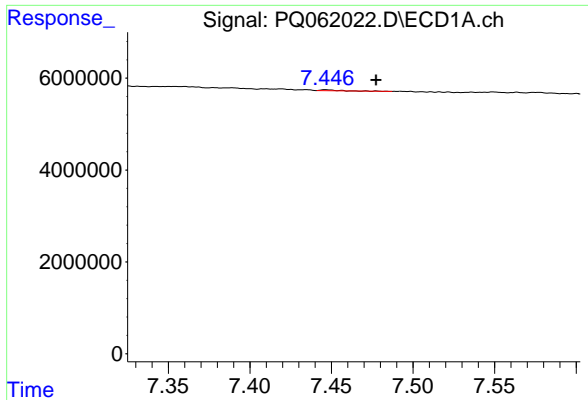
#40 AR-1262-5

R.T.: 8.076 min
 Delta R.T.: 0.019 min
 Response: 101056
 Conc: 0.57 ng/ml



#40 AR-1262-5

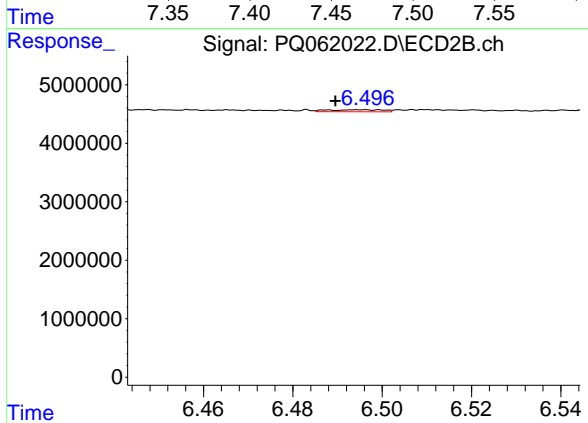
R.T.: 7.054 min
 Delta R.T.: 0.010 min
 Response: 377403
 Conc: 2.43 ng/ml



#41 AR-1268-1

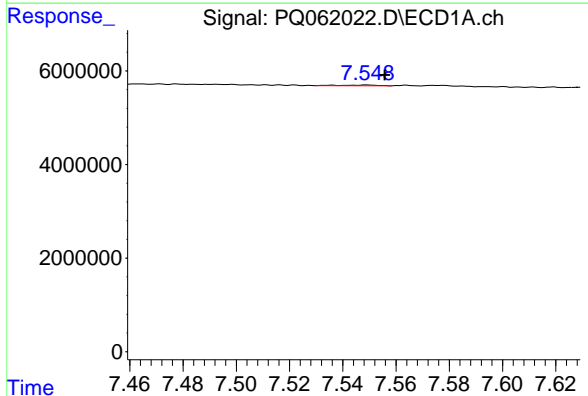
R.T.: 7.447 min
 Delta R.T.: -0.031 min
 Response: 153215
 Conc: 0.27 ng/ml

Instrument :
 ECD_Q
 ClientSampleId :



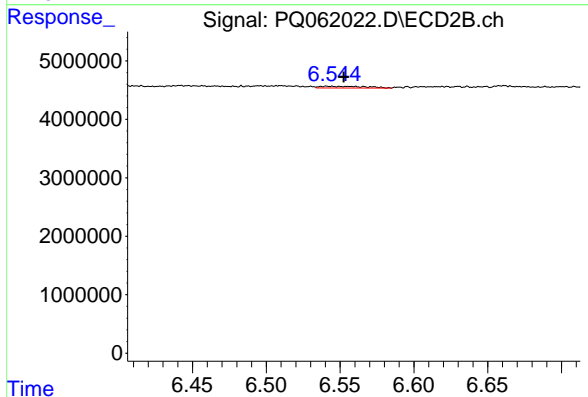
#41 AR-1268-1

R.T.: 6.495 min
 Delta R.T.: 0.006 min
 Response: 293369
 Conc: 0.62 ng/ml



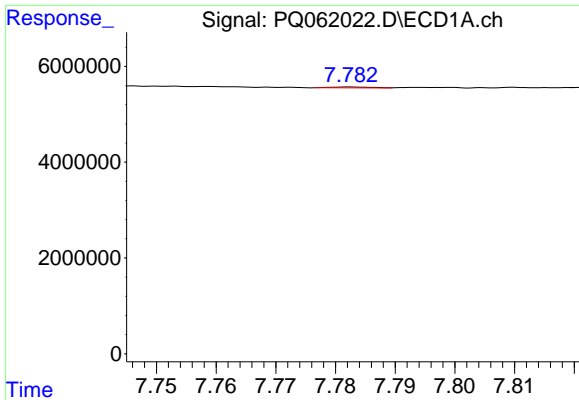
#42 AR-1268-2

R.T.: 7.549 min
 Delta R.T.: -0.007 min
 Response: 161385
 Conc: 0.32 ng/ml



#42 AR-1268-2

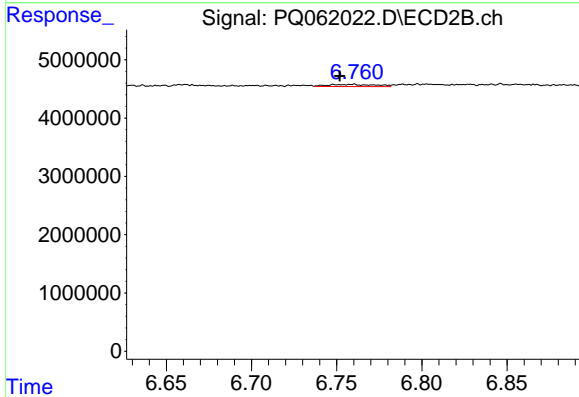
R.T.: 6.541 min
 Delta R.T.: -0.011 min
 Response: 650207
 Conc: 1.53 ng/ml



#43 AR-1268-3

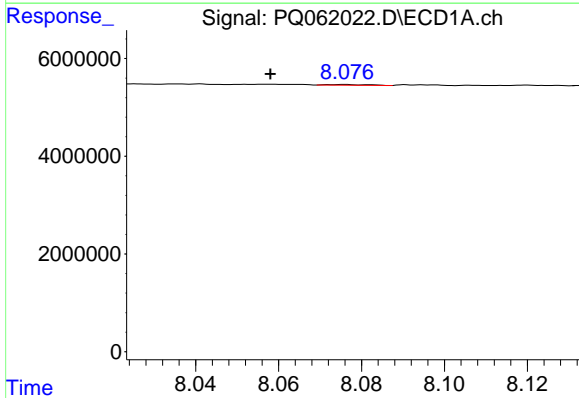
R.T.: 7.782 min
 Delta R.T.: 0.045 min
 Response: 89598
 Conc: 0.21 ng/ml

Instrument :
 ECD_Q
 ClientSampleId :



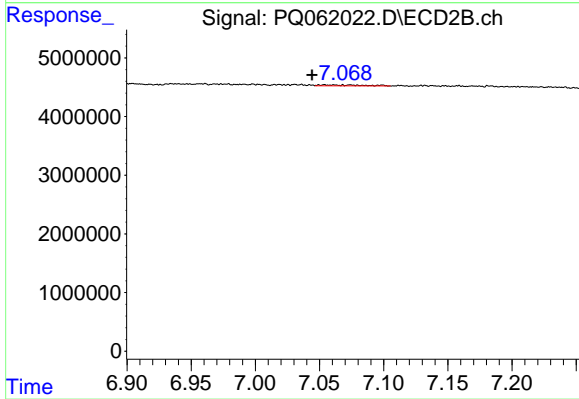
#43 AR-1268-3

R.T.: 6.760 min
 Delta R.T.: 0.008 min
 Response: 711468
 Conc: 1.93 ng/ml



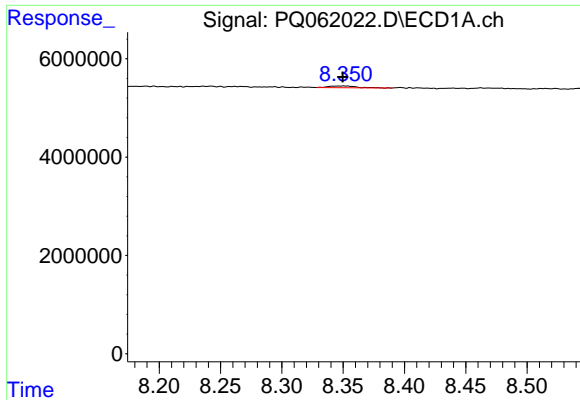
#44 AR-1268-4

R.T.: 8.076 min
 Delta R.T.: 0.018 min
 Response: 101056
 Conc: 0.55 ng/ml



#44 AR-1268-4

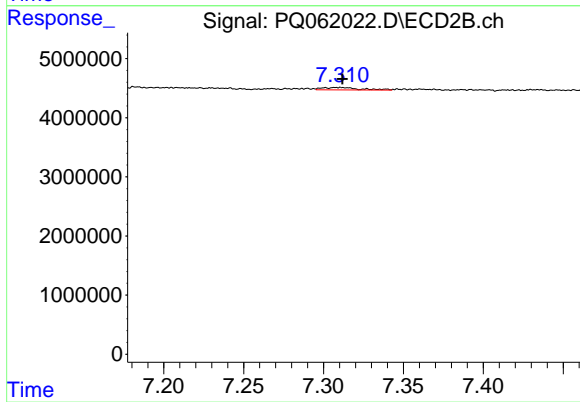
R.T.: 7.054 min
 Delta R.T.: 0.010 min
 Response: 377403
 Conc: 2.36 ng/ml



#45 AR-1268-5

R.T.: 8.351 min
Delta R.T.: 0.000 min
Response: 521473
Conc: 0.41 ng/ml

Instrument :
ECD_Q
ClientSampleId :



#45 AR-1268-5

R.T.: 7.310 min
Delta R.T.: -0.002 min
Response: 698553
Conc: 0.60 ng/ml