

Data Path : Z:\pestpcbsrv\HPCHEM1\ECD_Q\Data\PQ070820\
 Data File : PQ048651.D
 Signal(s) : Signal #1: ECD1A.ch Signal #2: ECD2B.ch
 Acq On : 08 Jul 2020 12:52
 Operator : DD\AJ
 Sample : AR1232ICC500
 Misc :
 ALS Vial : 9 Sample Multiplier: 1

Instrument :
 ECD_Q
 ClientSampleId :
 AR1232ICC500

Integration File signal 1: autoint1.e
 Integration File signal 2: autoint2.e
 Quant Time: Jul 08 13:26:59 2020
 Quant Method : Z:\pestpcbsrv\HPCHEM1\ECD_Q\Method\PQ070820.M
 Quant Title : GC EXTRACTABLES
 QLast Update : Wed Jul 08 13:26:27 2020
 Response via : Initial Calibration
 Integrator: ChemStation

Volume Inj. : 2 µl
 Signal #1 Phase : ZB-MR1 Signal #2 Phase: ZB-MR2
 Signal #1 Info : 30Mx0.32mmx 0.50µ Signal #2 Info : 30M x 0.32mm x 0.25µm

Compound	RT#1	RT#2	Resp#1	Resp#2	ng/ml	ng/ml

System Monitoring Compounds						
1) SA Tetrachlo...	5.278	4.285	355.2E6	180.2E6	50.000	50.000
2) SA Decachlor...	11.538	9.652	385.8E6	202.3E6	50.000	50.000
Target Compounds						
11) L3 AR-1232-1	5.719	4.733	72503890	37044181	500.000	500.000
12) L3 AR-1232-2	6.313	5.571	34633844	38763507	500.000	500.000
13) L3 AR-1232-3	6.634	5.764	72834815	18839881	500.000	500.000
14) L3 AR-1232-4	6.810	5.859	36380860	16911418	500.000	500.000
15) L3 AR-1232-5	6.903	6.045	27009784	17877083	500.000	500.000

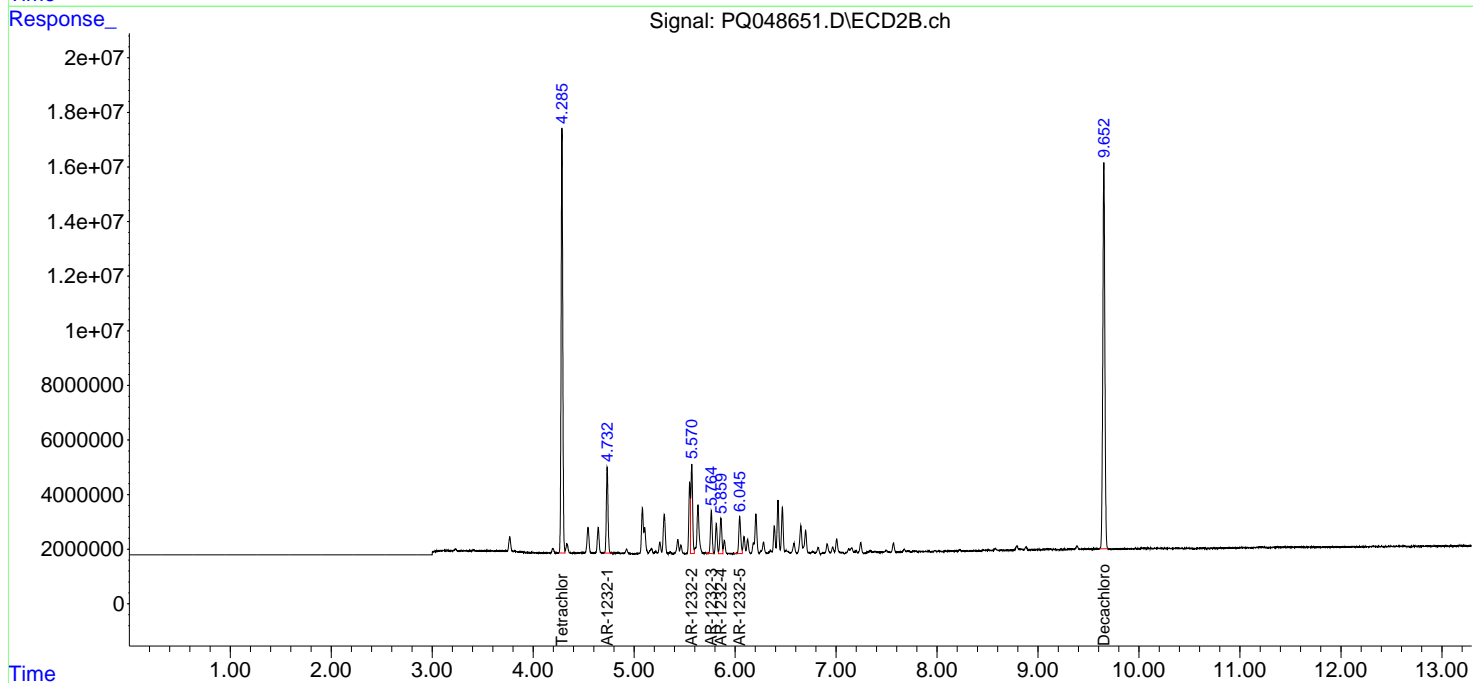
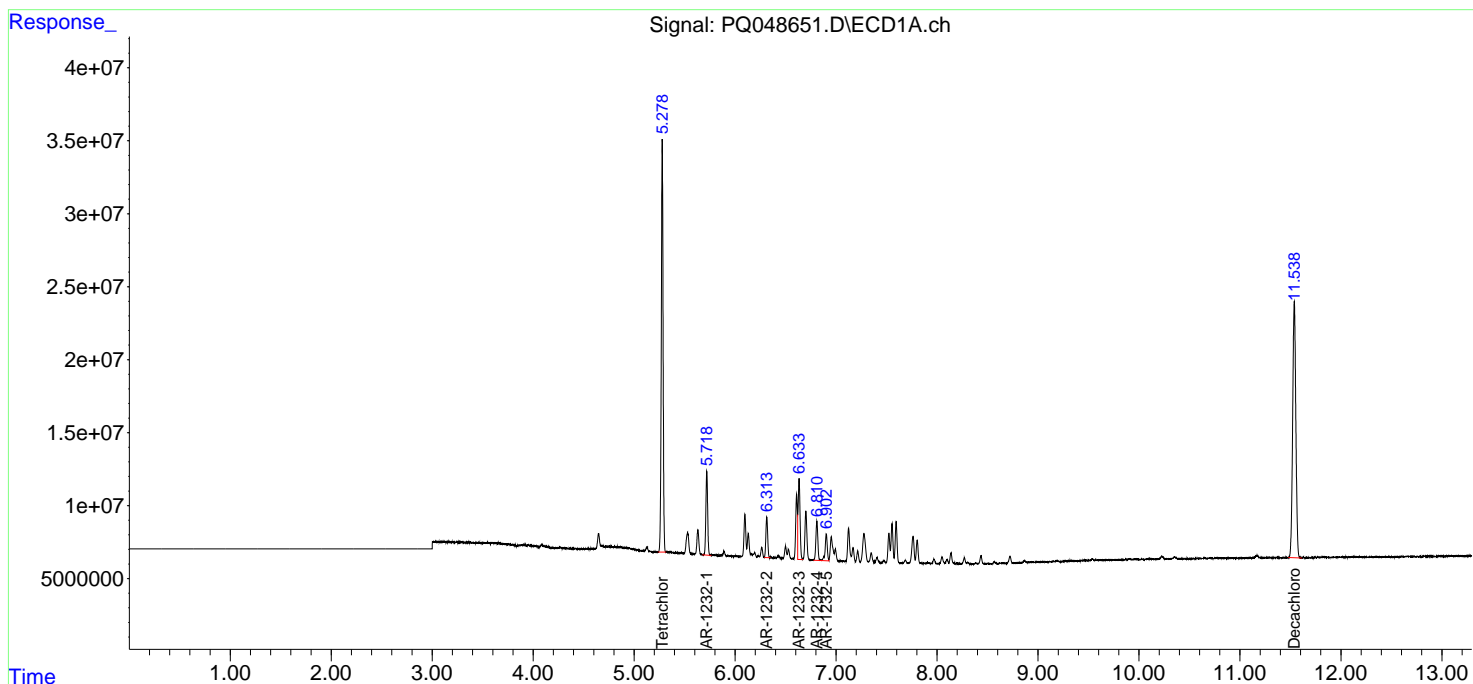
(f)=RT Delta > 1/2 Window (#)=Amounts differ by > 25% (m)=manual int.

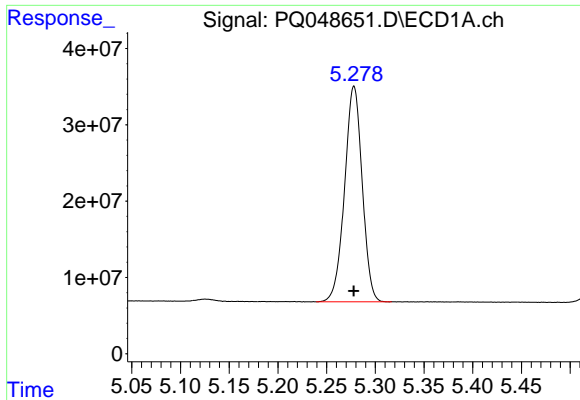
Data Path : Z:\pestpcbsrv\HPCHEM1\ECD_Q\Data\PQ070820\
 Data File : PQ048651.D
 Signal(s) : Signal #1: ECD1A.ch Signal #2: ECD2B.ch
 Acq On : 08 Jul 2020 12:52
 Operator : DD\AJ
 Sample : AR1232ICC500
 Misc :
 ALS Vial : 9 Sample Multiplier: 1

Instrument :
 ECD_Q
 ClientSampled :
 AR1232ICC500

Integration File signal 1: autoint1.e
 Integration File signal 2: autoint2.e
 Quant Time: Jul 08 13:26:59 2020
 Quant Method : Z:\pestpcbsrv\HPCHEM1\ECD_Q\Method\PQ070820.M
 Quant Title : GC EXTRACTABLES
 QLast Update : Wed Jul 08 13:26:27 2020
 Response via : Initial Calibration
 Integrator: ChemStation

Volume Inj. : 2 µl
 Signal #1 Phase : ZB-MR1 Signal #2 Phase: ZB-MR2
 Signal #1 Info : 30Mx0.32mmx 0.50µm Signal #2 Info : 30M x 0.32mm x 0.25µm

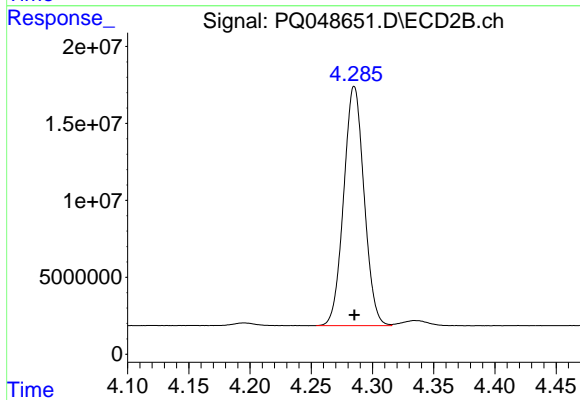




#1 Tetrachloro-m-xylene

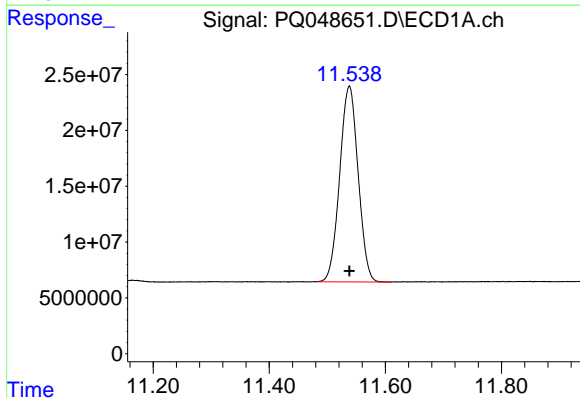
R.T.: 5.278 min
Delta R.T.: 0.000 min
Response: 355237632
Conc: 50.00 ng/ml

Instrument :
ECD_Q
ClientSampleId :
AR1232ICC500



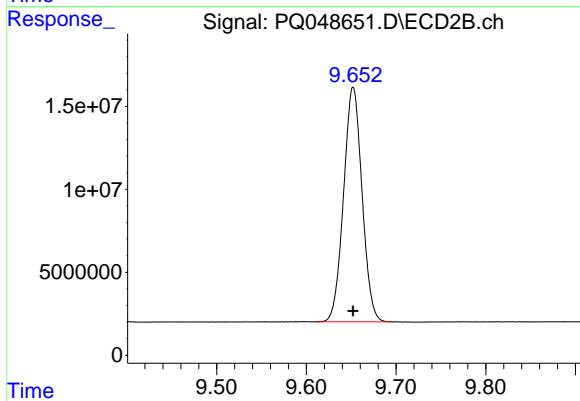
#1 Tetrachloro-m-xylene

R.T.: 4.285 min
Delta R.T.: 0.000 min
Response: 180199859
Conc: 50.00 ng/ml



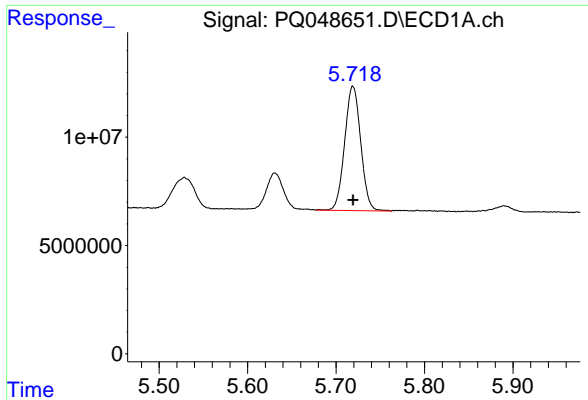
#2 Decachlorobiphenyl

R.T.: 11.538 min
Delta R.T.: 0.000 min
Response: 385840535
Conc: 50.00 ng/ml



#2 Decachlorobiphenyl

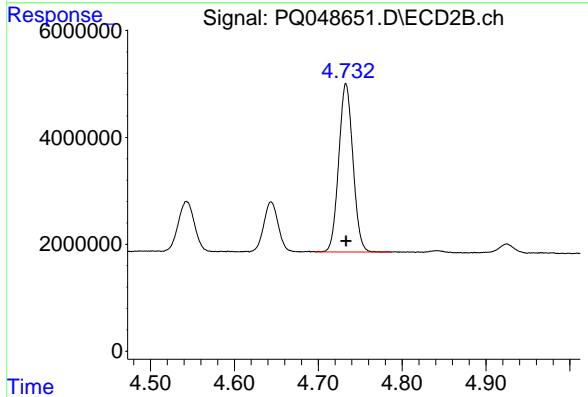
R.T.: 9.652 min
Delta R.T.: 0.000 min
Response: 202331637
Conc: 50.00 ng/ml



#11 AR-1232-1

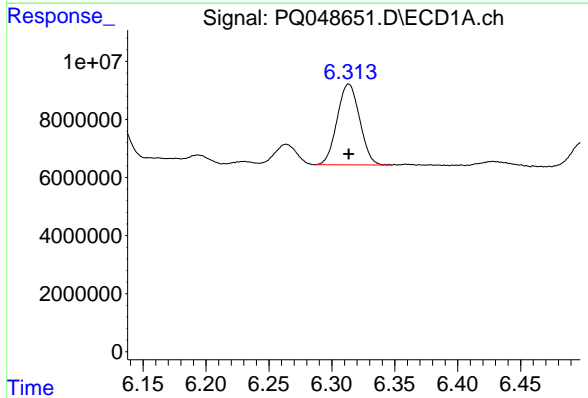
R.T.: 5.719 min
 Delta R.T.: 0.000 min
 Response: 72503890
 Conc: 500.00 ng/ml

Instrument :
 ECD_Q
 ClientSampled :
 AR1232ICC500



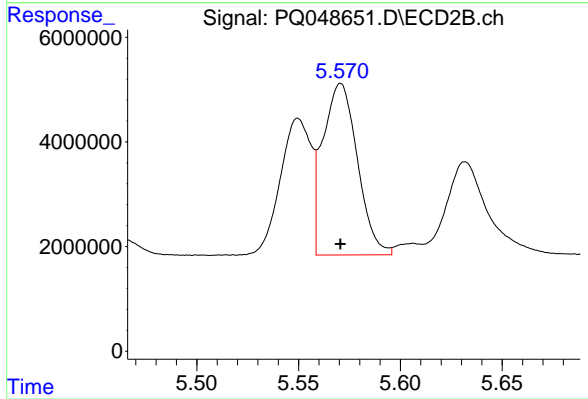
#11 AR-1232-1

R.T.: 4.733 min
 Delta R.T.: 0.000 min
 Response: 37044181
 Conc: 500.00 ng/ml



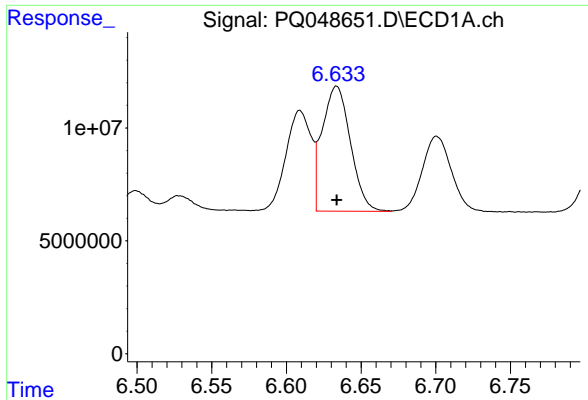
#12 AR-1232-2

R.T.: 6.313 min
 Delta R.T.: 0.000 min
 Response: 34633844
 Conc: 500.00 ng/ml



#12 AR-1232-2

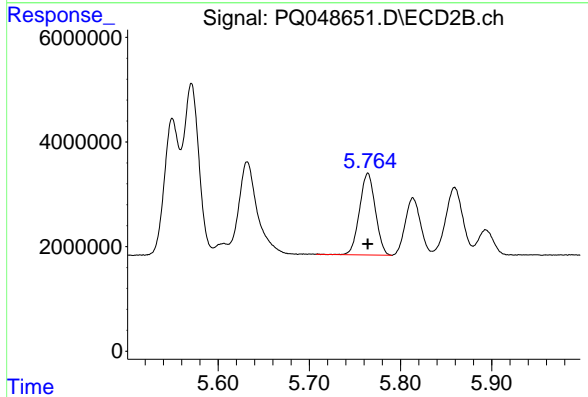
R.T.: 5.571 min
 Delta R.T.: 0.000 min
 Response: 38763507
 Conc: 500.00 ng/ml



#13 AR-1232-3

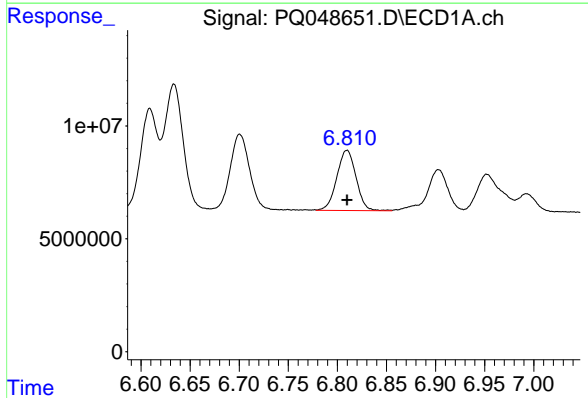
R.T.: 6.634 min
Delta R.T.: 0.000 min
Response: 72834815
Conc: 500.00 ng/ml

Instrument :
ECD_Q
ClientSampleId :
AR1232ICC500



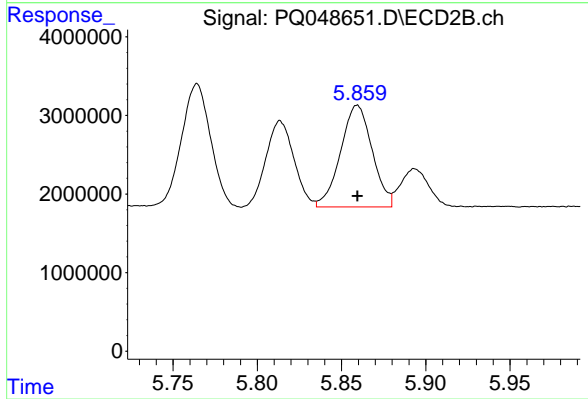
#13 AR-1232-3

R.T.: 5.764 min
Delta R.T.: 0.000 min
Response: 18839881
Conc: 500.00 ng/ml



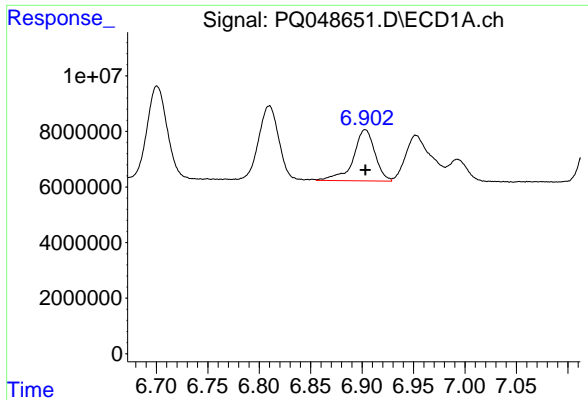
#14 AR-1232-4

R.T.: 6.810 min
Delta R.T.: 0.000 min
Response: 36380860
Conc: 500.00 ng/ml



#14 AR-1232-4

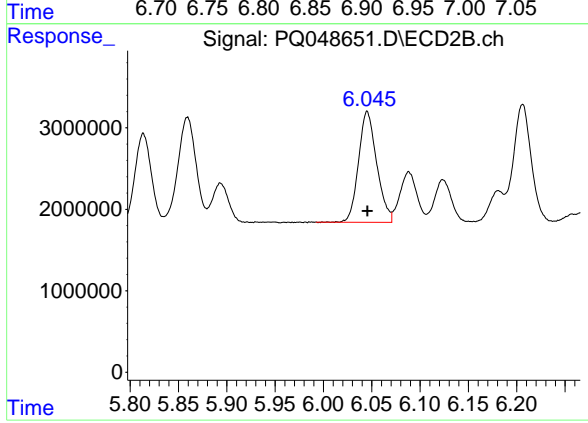
R.T.: 5.859 min
Delta R.T.: 0.000 min
Response: 16911418
Conc: 500.00 ng/ml



#15 AR-1232-5

R.T.: 6.903 min
Delta R.T.: 0.000 min
Response: 27009784
Conc: 500.00 ng/ml

Instrument :
ECD_Q
ClientSampled :
AR1232ICC500



#15 AR-1232-5

R.T.: 6.045 min
Delta R.T.: 0.000 min
Response: 17877083
Conc: 500.00 ng/ml