

Data Path : Z:\pestpcbsrv\HPCHEM1\ECD_Q\Data\PQ071023\
 Data File : PQ062054.D
 Signal(s) : Signal #1: ECD1A.ch Signal #2: ECD2B.ch
 Acq On : 10 Jul 2023 12:37
 Operator : YP\AJ
 Sample : 03555-09
 Misc :
 ALS Vial : 16 Sample Multiplier: 1

Instrument :
 ECD_Q
 ClientSampleId :

Integration File signal 1: autoint1.e
 Integration File signal 2: autoint2.e
 Quant Time: Jul 10 22:37:35 2023
 Quant Method : Z:\pestpcbsrv\HPCHEM1\ECD_Q\Method\PQ070123.M
 Quant Title : GC EXTRACTABLES
 QLast Update : Tue Jul 04 05:32:27 2023
 Response via : Initial Calibration
 Integrator: ChemStation

Volume Inj. : 2 µl
 Signal #1 Phase : ZB-MR1 Signal #2 Phase: ZB-MR2
 Signal #1 Info : 30Mx0.32mmx 0.50µ Signal #2 Info : 30M x 0.32mm x 0.25µm

Compound	RT#1	RT#2	Resp#1	Resp#2	ng/ml	ng/ml
System Monitoring Compounds						
1) SA Tetrachlo...	3.404	2.758	91823432	55557372	18.823	22.142
2) SA Decachlor...	8.584	7.527	63027382	54493762	17.350	16.354
Target Compounds						
3) L1 AR-1016-1	4.503	3.758	2737220	5146448	16.618	51.997 #
4) L1 AR-1016-2	4.524	3.775	6625302	7624821	26.794	52.877 #
5) L1 AR-1016-3	4.582	3.936	2391122	3322002	15.689	44.033 #
6) L1 AR-1016-4	4.673	3.983	3877291	5719648	30.933	87.085 #
7) L1 AR-1016-5	4.960	4.179	9607114	14112834	78.930	172.146 #
8) L2 AR-1221-1	3.593	2.954	887052	1496585	14.758	45.356 #
9) L2 AR-1221-2	3.680	3.046	2179941	129322	48.516	5.091 #
10) L2 AR-1221-3	3.754	3.104	2999205	989171	21.344	12.831 #
11) L3 AR-1232-1	3.754	3.104	2999205	989171	28.401	17.263 #
12) L3 AR-1232-2	4.244	3.775	8755803	7624821	148.024	114.564
13) L3 AR-1232-3	4.524	3.936	6625302	3322002	58.589	96.137 #
14) L3 AR-1232-4	4.673	4.020	3877291	6061700	68.423	203.824 #
15) L3 AR-1232-5	4.770	4.179	13940051	14112834	348.066	395.751
16) L4 AR-1242-1	4.503	3.758	2737220	5146448	20.942	66.544 #
17) L4 AR-1242-2	4.524	3.775	6625302	7624821	34.127	68.594 #
18) L4 AR-1242-3	4.582	3.936	2391122	3322002	19.787	56.713 #
19) L4 AR-1242-4	4.673	4.020	3877291	6061700	39.773	103.392 #
20) L4 AR-1242-5	5.389	4.514	13149482	35663461	137.360	430.237 #
21) L5 AR-1248-1	4.503	3.758	2737220	5146448	26.325	82.316 #
22) L5 AR-1248-2	4.770	3.983	13940051	5719648	97.034	60.997 #
23) L5 AR-1248-3	4.960	4.020	9607114	6061700	55.305	66.948
24) L5 AR-1248-4	5.353	4.179	11396020	14112834	59.376	125.070 #
25) L5 AR-1248-5	5.389	4.552	13149482	22162403	72.600	197.821 #
26) L6 AR-1254-1	5.326	4.514	22948857	35663461	123.500	220.877 #
27) L6 AR-1254-2	5.534	4.662	33471397	40328240	115.136	273.923 #
28) L6 AR-1254-3	5.897	5.043	65419786	66048980	212.996	282.622 #
29) L6 AR-1254-4	6.182	5.270	25734400	32084789	110.832	210.510 #
30) L6 AR-1254-5	6.594	5.675	63236005	70307077	246.179	304.628
31) L7 AR-1260-1	6.062	5.173	25594449	55323328	108.482	332.166 #
32) L7 AR-1260-2	6.319	5.362	66451240	52129245	230.084	250.686
33) L7 AR-1260-3	6.676	5.501	20307529	44905431	115.007	230.807 #
34) L7 AR-1260-4	6.893	5.965	27107309	16474169	128.684	112.944
35) L7 AR-1260-5	7.204	6.211	65274381	39735523	158.970	119.664
36) L8 AR-1262-1	6.676	5.719	20307529	23314610	66.595	100.290 #
37) L8 AR-1262-2	7.204	5.965	65274381	16474169	123.928	76.196 #
38) L8 AR-1262-3	7.483	6.490	44155200	9528647	125.333	54.659 #
39) L8 AR-1262-4	7.554	6.550	29000469	29117356	108.730	90.344
40) L8 AR-1262-5	8.059	7.044	14329280	14847598	80.724	95.720
41) L9 AR-1268-1	7.483	6.490	44155200	9528647	77.809	20.251 #

Data Path : Z:\pestpcbsrv\HPCHEM1\ECD_Q\Data\PQ071023\
 Data File : PQ062054.D
 Signal(s) : Signal #1: ECD1A.ch Signal #2: ECD2B.ch
 Acq On : 10 Jul 2023 12:37
 Operator : YP\AJ
 Sample : 03555-09
 Misc :
 ALS Vial : 16 Sample Multiplier: 1

Instrument :
 ECD_Q
 ClientSampleId :

Integration File signal 1: autoint1.e
 Integration File signal 2: autoint2.e
 Quant Time: Jul 10 22:37:35 2023
 Quant Method : Z:\pestpcbsrv\HPCHEM1\ECD_Q\Method\PQ070123.M
 Quant Title : GC EXTRACTABLES
 QLast Update : Tue Jul 04 05:32:27 2023
 Response via : Initial Calibration
 Integrator: ChemStation

Volume Inj. : 2 µl
 Signal #1 Phase : ZB-MR1 Signal #2 Phase: ZB-MR2
 Signal #1 Info : 30Mx0.32mmx 0.50µ Signal #2 Info : 30M x 0.32mm x 0.25µm

	Compound	RT#1	RT#2	Resp#1	Resp#2	ng/ml	ng/ml
42)	L9 AR-1268-2	7.554	6.550	29000469	29117356	56.878	68.721
43)	L9 AR-1268-3	7.734	6.750	3263626	3573693	7.647	9.703 #
44)	L9 AR-1268-4	8.059	7.044	14329280	14847598	78.308	92.834
45)	L9 AR-1268-5	8.351	7.312	9436051	12402049	7.484	10.628 #

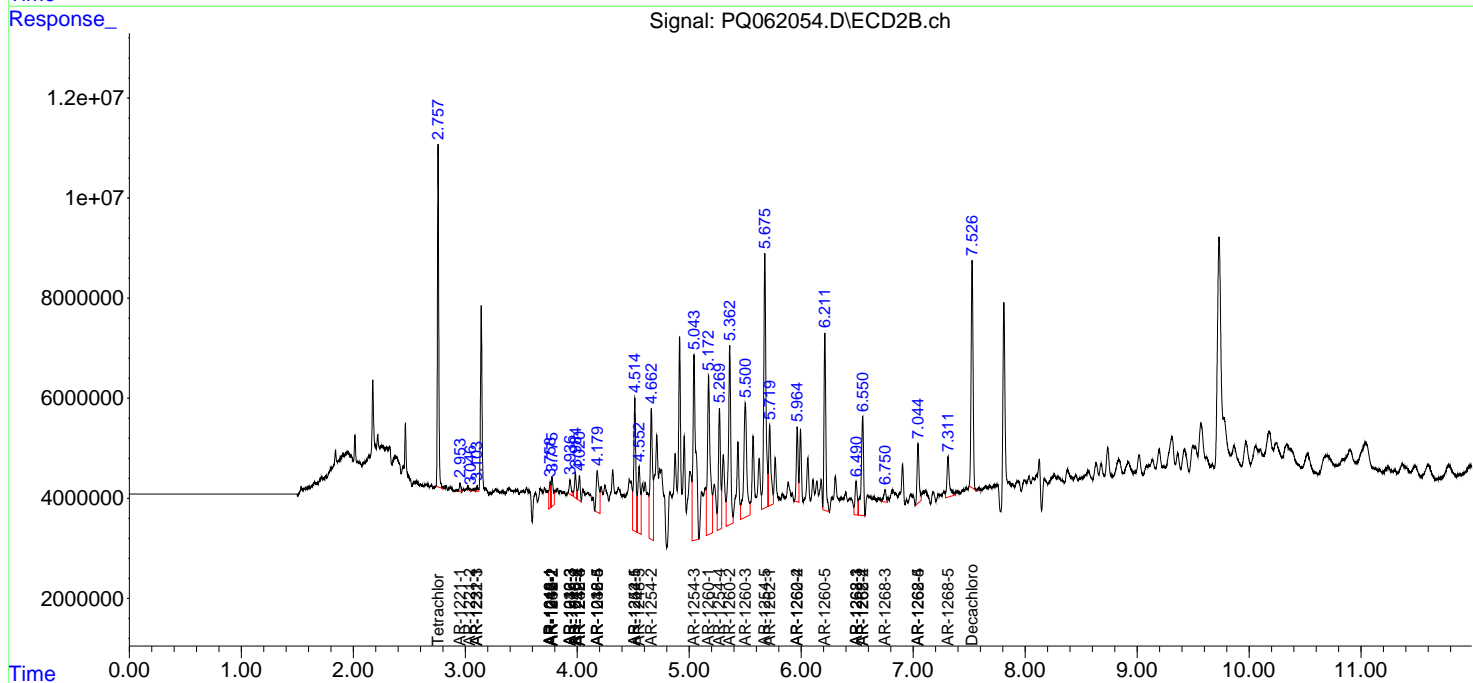
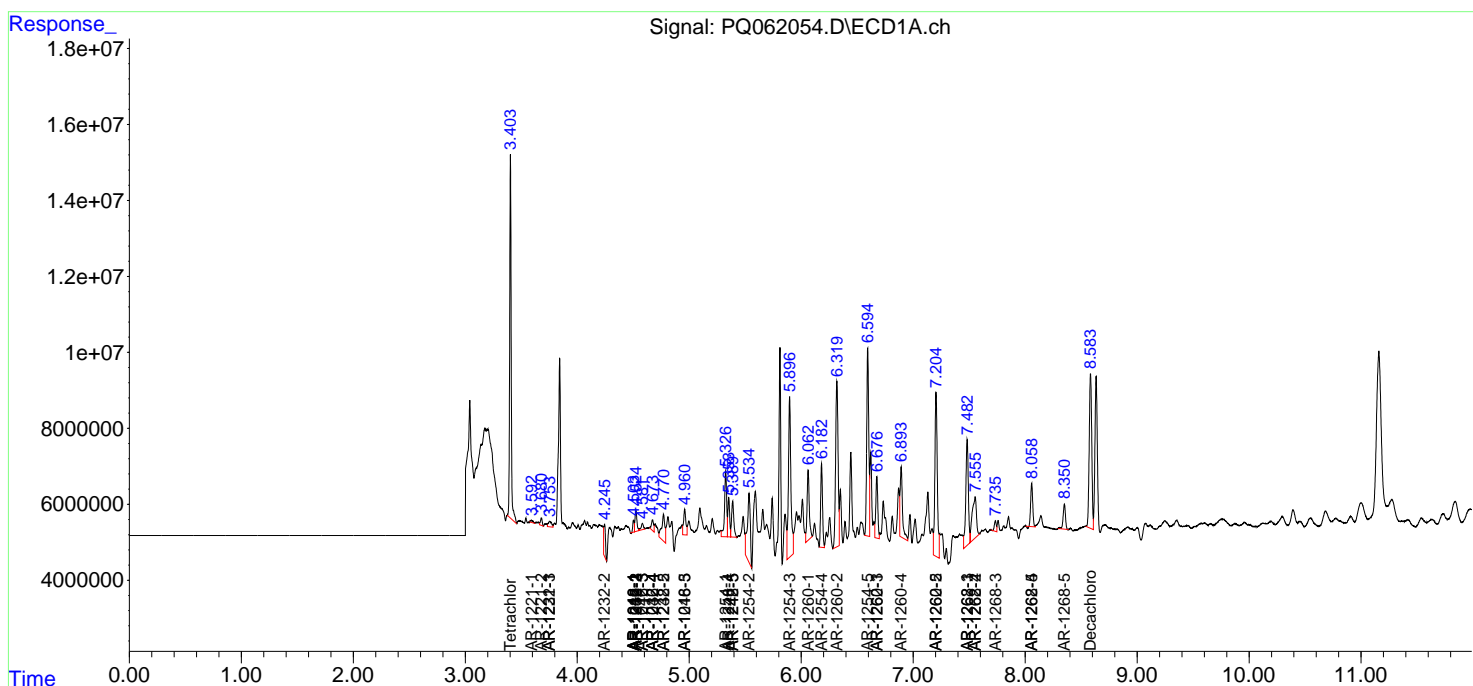
(f)=RT Delta > 1/2 Window (#)=Amounts differ by > 25% (m)=manual int.

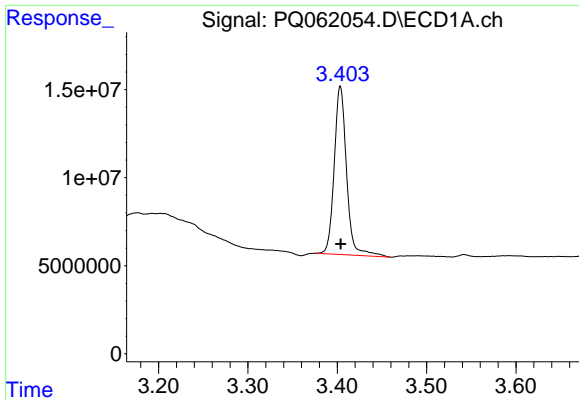
Data Path : Z:\pestpcbsrv\HPCHEM1\ECD_Q\Data\PQ071023\
 Data File : PQ062054.D
 Signal(s) : Signal #1: ECD1A.ch Signal #2: ECD2B.ch
 Acq On : 10 Jul 2023 12:37
 Operator : YP\AJ
 Sample : 03555-09
 Misc :
 ALS Vial : 16 Sample Multiplier: 1

Instrument :
 ECD_Q
 ClientSampleId :

Integration File signal 1: autoint1.e
 Integration File signal 2: autoint2.e
 Quant Time: Jul 10 22:37:35 2023
 Quant Method : Z:\pestpcbsrv\HPCHEM1\ECD_Q\Method\PQ070123.M
 Quant Title : GC EXTRACTABLES
 QLast Update : Tue Jul 04 05:32:27 2023
 Response via : Initial Calibration
 Integrator: ChemStation

Volume Inj. : 2 µl
 Signal #1 Phase : ZB-MR1 Signal #2 Phase: ZB-MR2
 Signal #1 Info : 30Mx0.32mmx 0.50µ Signal #2 Info : 30M x 0.32mm x 0.25µm

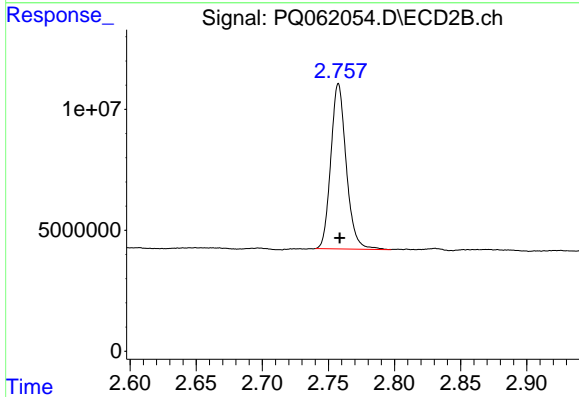




#1 Tetrachloro-m-xylene

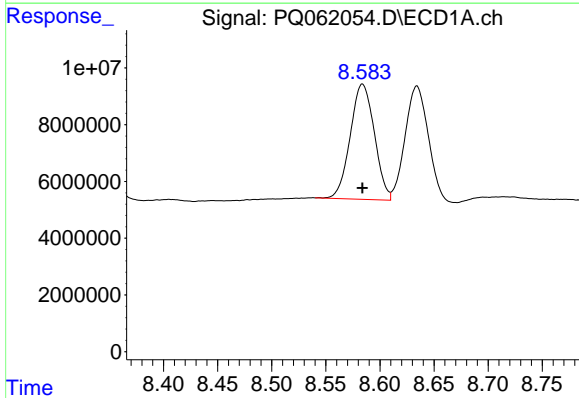
R.T.: 3.404 min
 Delta R.T.: 0.000 min
 Response: 91823432
 Conc: 18.82 ng/ml

Instrument :
 ECD_Q
 ClientSampleId :



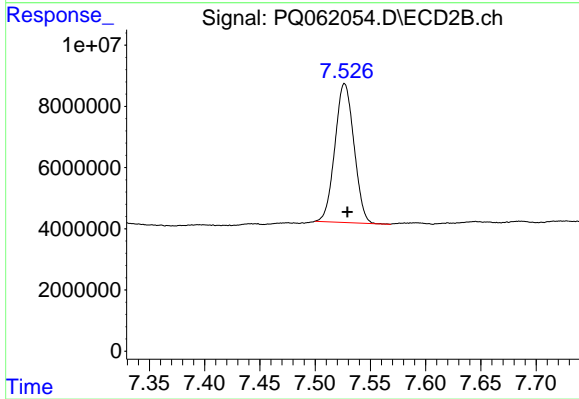
#1 Tetrachloro-m-xylene

R.T.: 2.758 min
 Delta R.T.: 0.000 min
 Response: 55557372
 Conc: 22.14 ng/ml



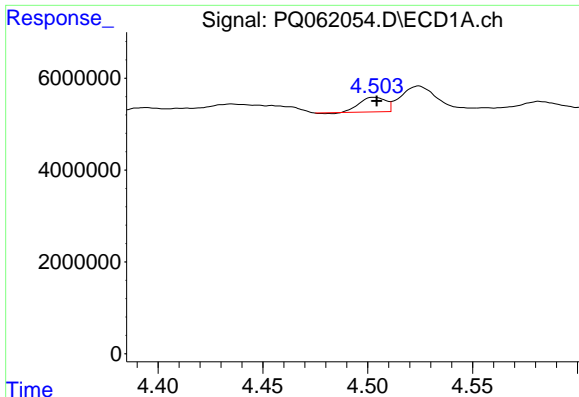
#2 Decachlorobiphenyl

R.T.: 8.584 min
 Delta R.T.: 0.000 min
 Response: 63027382
 Conc: 17.35 ng/ml



#2 Decachlorobiphenyl

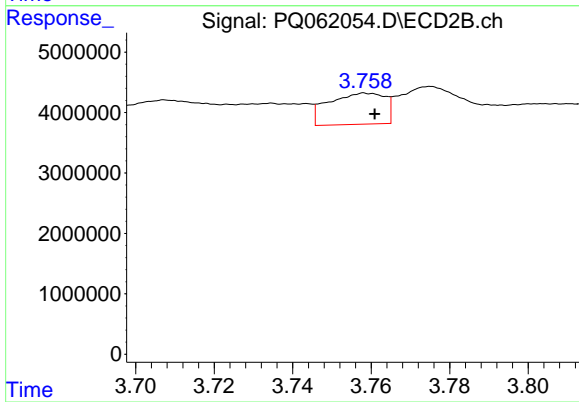
R.T.: 7.527 min
 Delta R.T.: -0.003 min
 Response: 54493762
 Conc: 16.35 ng/ml



#3 AR-1016-1

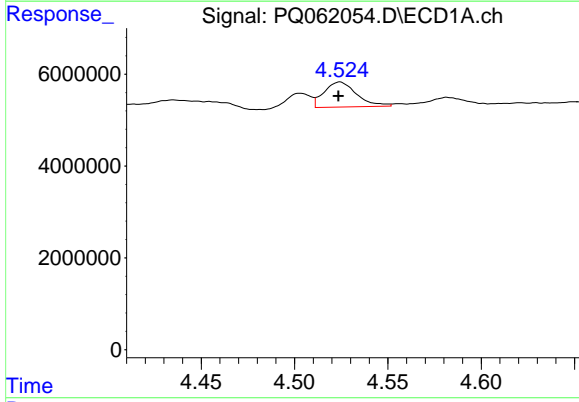
R.T.: 4.503 min
 Delta R.T.: -0.001 min
 Response: 2737220
 Conc: 16.62 ng/ml

Instrument :
 ECD_Q
 ClientSampleId :



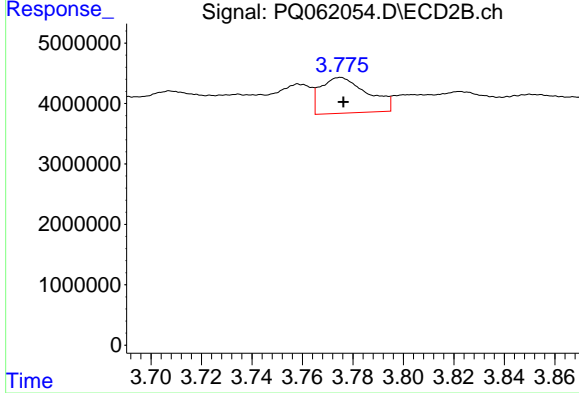
#3 AR-1016-1

R.T.: 3.758 min
 Delta R.T.: -0.003 min
 Response: 5146448
 Conc: 52.00 ng/ml



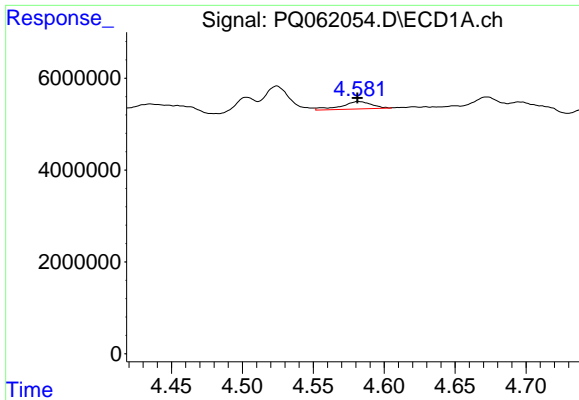
#4 AR-1016-2

R.T.: 4.524 min
 Delta R.T.: 0.000 min
 Response: 6625302
 Conc: 26.79 ng/ml



#4 AR-1016-2

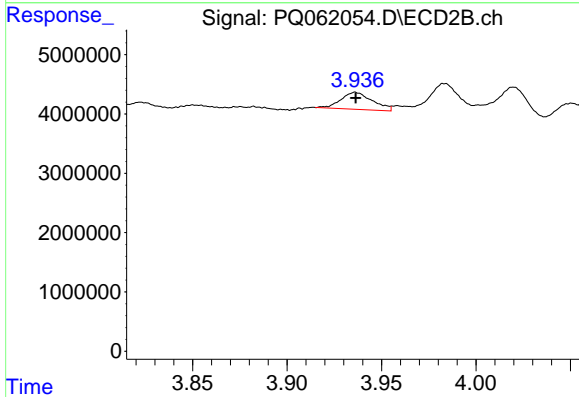
R.T.: 3.775 min
 Delta R.T.: -0.001 min
 Response: 7624821
 Conc: 52.88 ng/ml



#5 AR-1016-3

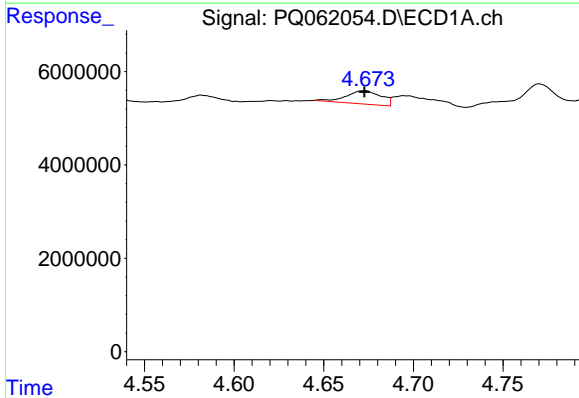
R.T.: 4.582 min
 Delta R.T.: 0.000 min
 Response: 2391122
 Conc: 15.69 ng/ml

Instrument :
 ECD_Q
 ClientSampleId :



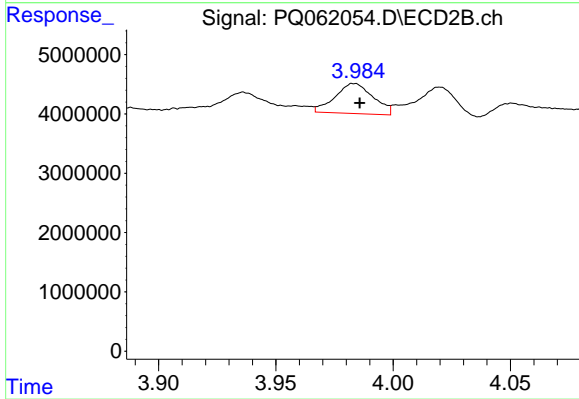
#5 AR-1016-3

R.T.: 3.936 min
 Delta R.T.: 0.000 min
 Response: 3322002
 Conc: 44.03 ng/ml



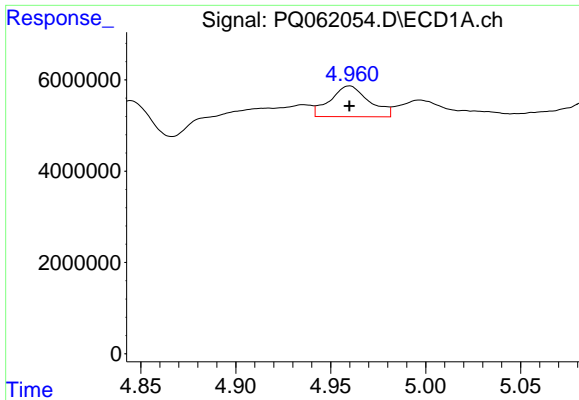
#6 AR-1016-4

R.T.: 4.673 min
 Delta R.T.: 0.000 min
 Response: 3877291
 Conc: 30.93 ng/ml



#6 AR-1016-4

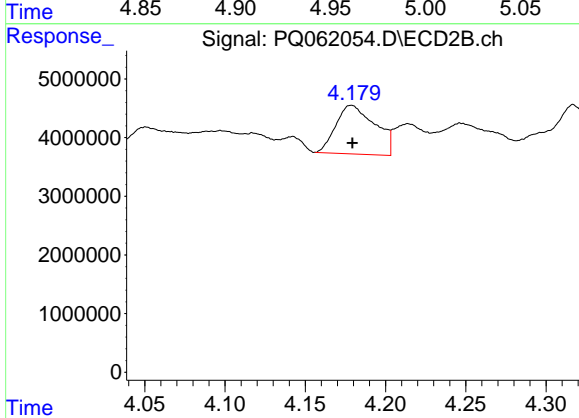
R.T.: 3.983 min
 Delta R.T.: -0.002 min
 Response: 5719648
 Conc: 87.08 ng/ml



#7 AR-1016-5

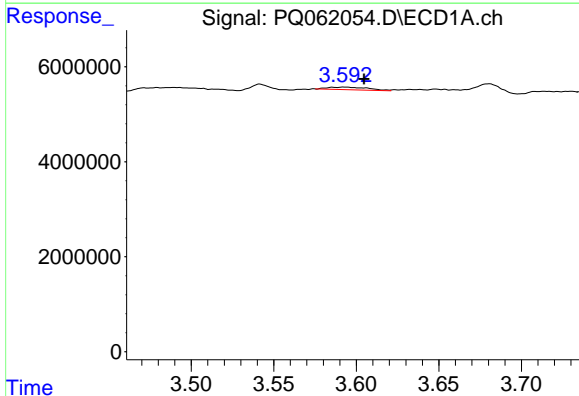
R.T.: 4.960 min
 Delta R.T.: 0.000 min
 Response: 9607114
 Conc: 78.93 ng/ml

Instrument :
 ECD_Q
 ClientSampleId :



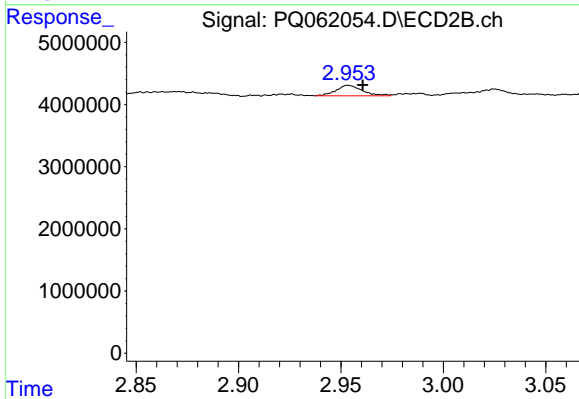
#7 AR-1016-5

R.T.: 4.179 min
 Delta R.T.: 0.000 min
 Response: 14112834
 Conc: 172.15 ng/ml



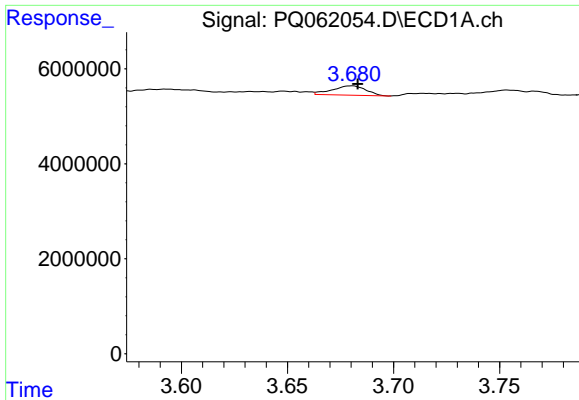
#8 AR-1221-1

R.T.: 3.593 min
 Delta R.T.: -0.012 min
 Response: 887052
 Conc: 14.76 ng/ml



#8 AR-1221-1

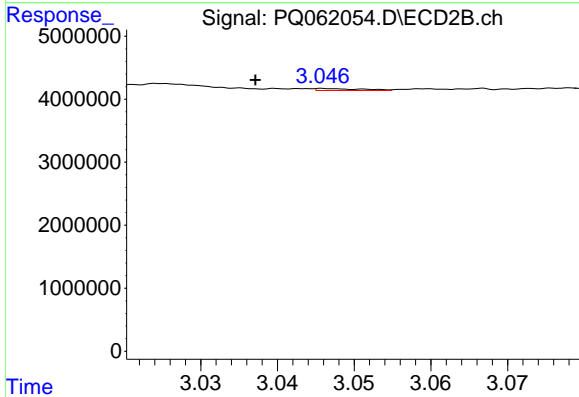
R.T.: 2.954 min
 Delta R.T.: -0.007 min
 Response: 1496585
 Conc: 45.36 ng/ml



#9 AR-1221-2

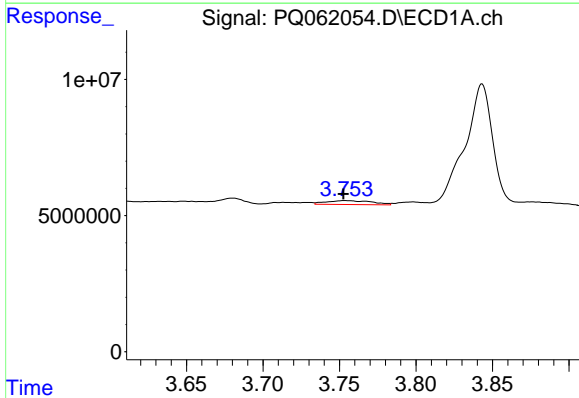
R.T.: 3.680 min
 Delta R.T.: -0.003 min
 Response: 2179941
 Conc: 48.52 ng/ml

Instrument :
 ECD_Q
 ClientSampleId :



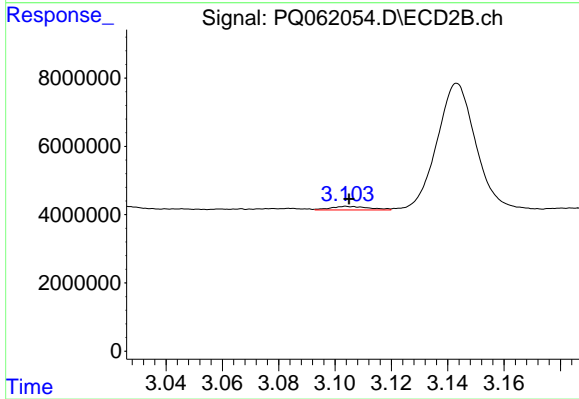
#9 AR-1221-2

R.T.: 3.046 min
 Delta R.T.: 0.009 min
 Response: 129322
 Conc: 5.09 ng/ml



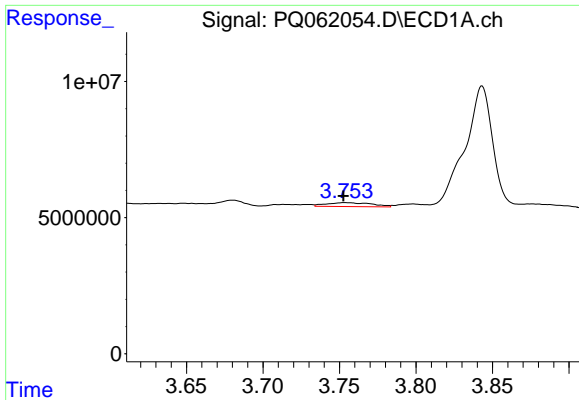
#10 AR-1221-3

R.T.: 3.754 min
 Delta R.T.: 0.001 min
 Response: 2999205
 Conc: 21.34 ng/ml



#10 AR-1221-3

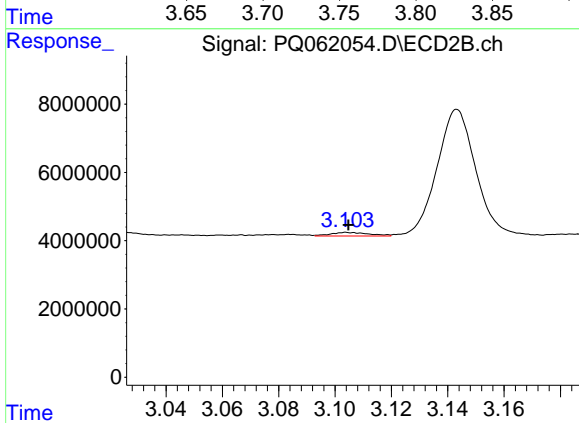
R.T.: 3.104 min
 Delta R.T.: -0.001 min
 Response: 989171
 Conc: 12.83 ng/ml



#11 AR-1232-1

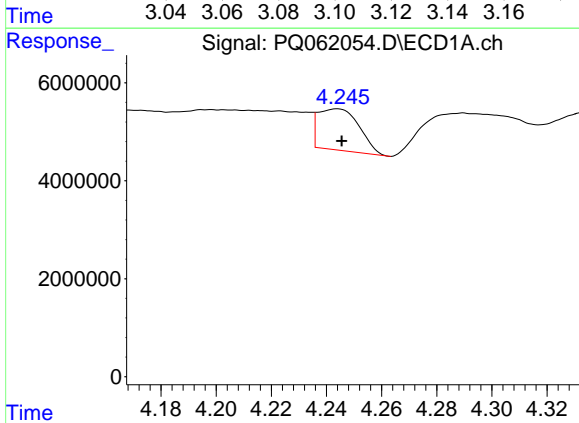
R.T.: 3.754 min
 Delta R.T.: 0.000 min
 Response: 2999205
 Conc: 28.40 ng/ml

Instrument :
 ECD_Q
 ClientSampleId :



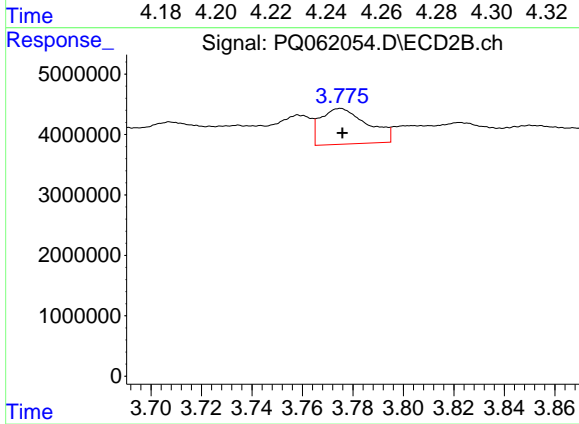
#11 AR-1232-1

R.T.: 3.104 min
 Delta R.T.: 0.000 min
 Response: 989171
 Conc: 17.26 ng/ml



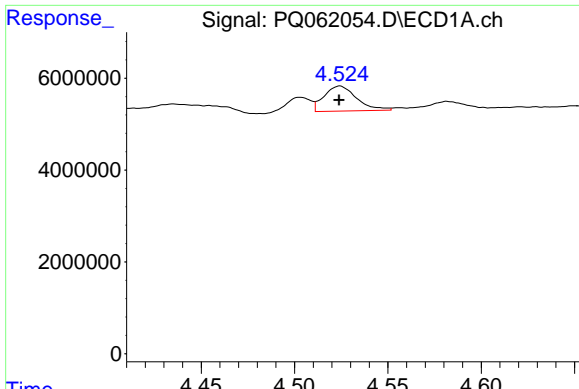
#12 AR-1232-2

R.T.: 4.244 min
 Delta R.T.: -0.002 min
 Response: 8755803
 Conc: 148.02 ng/ml



#12 AR-1232-2

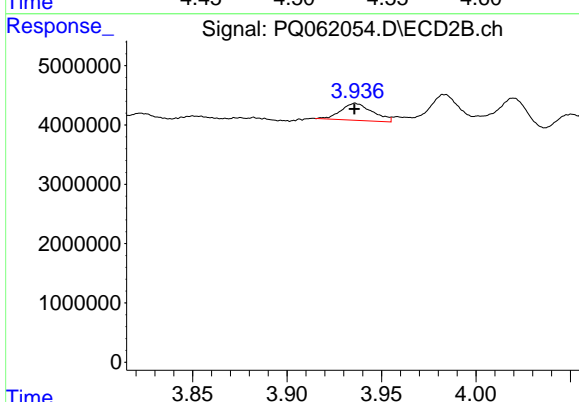
R.T.: 3.775 min
 Delta R.T.: 0.000 min
 Response: 7624821
 Conc: 114.56 ng/ml



#13 AR-1232-3

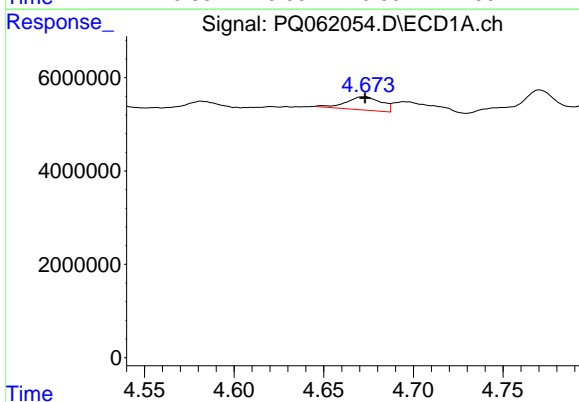
R.T.: 4.524 min
 Delta R.T.: 0.000 min
 Response: 6625302
 Conc: 58.59 ng/ml

Instrument :
 ECD_Q
 ClientSampleId :



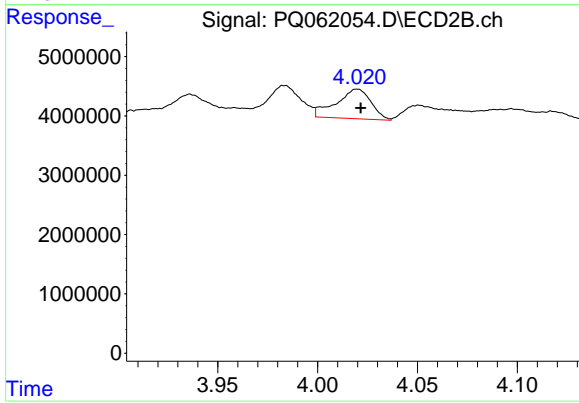
#13 AR-1232-3

R.T.: 3.936 min
 Delta R.T.: 0.000 min
 Response: 3322002
 Conc: 96.14 ng/ml



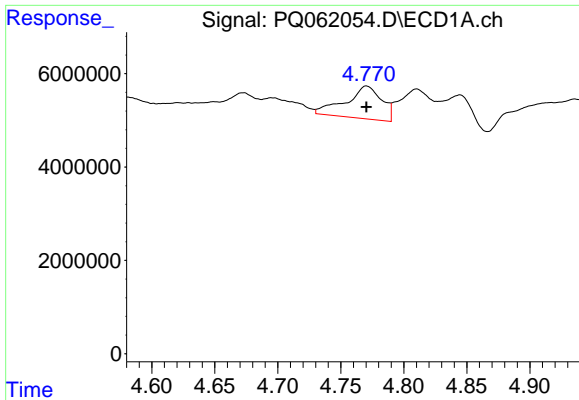
#14 AR-1232-4

R.T.: 4.673 min
 Delta R.T.: 0.000 min
 Response: 3877291
 Conc: 68.42 ng/ml



#14 AR-1232-4

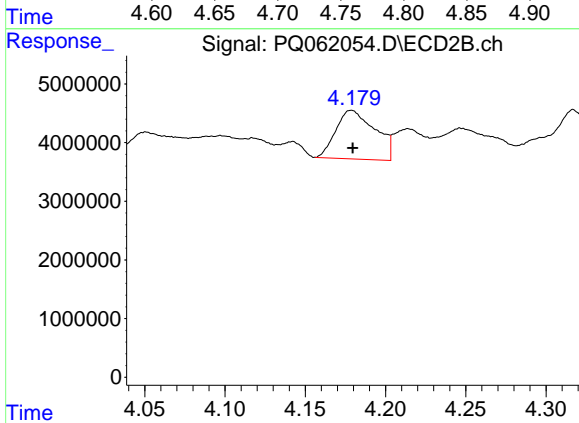
R.T.: 4.020 min
 Delta R.T.: -0.002 min
 Response: 6061700
 Conc: 203.82 ng/ml



#15 AR-1232-5

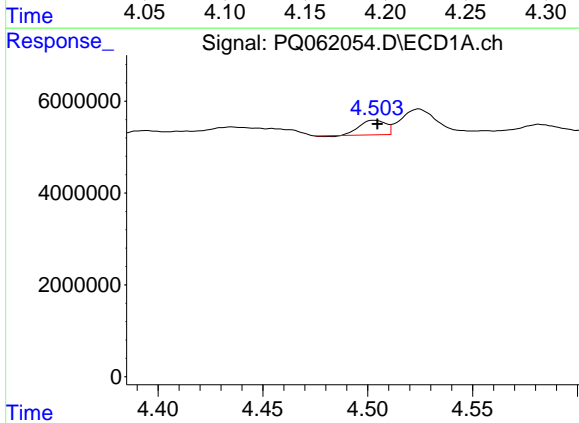
R.T.: 4.770 min
 Delta R.T.: 0.000 min
 Response: 13940051
 Conc: 348.07 ng/ml

Instrument :
 ECD_Q
 ClientSampleId :



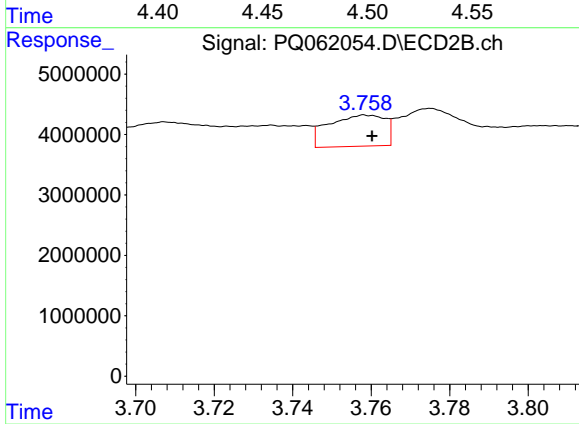
#15 AR-1232-5

R.T.: 4.179 min
 Delta R.T.: 0.000 min
 Response: 14112834
 Conc: 395.75 ng/ml



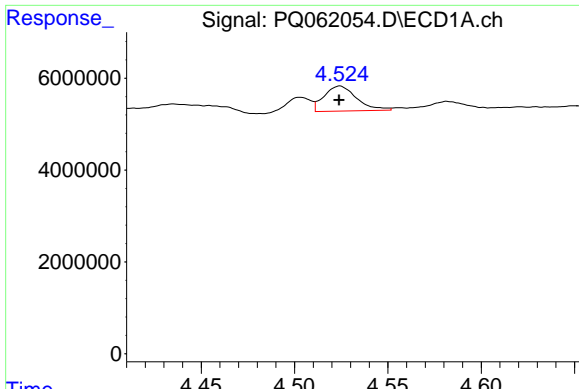
#16 AR-1242-1

R.T.: 4.503 min
 Delta R.T.: -0.002 min
 Response: 2737220
 Conc: 20.94 ng/ml



#16 AR-1242-1

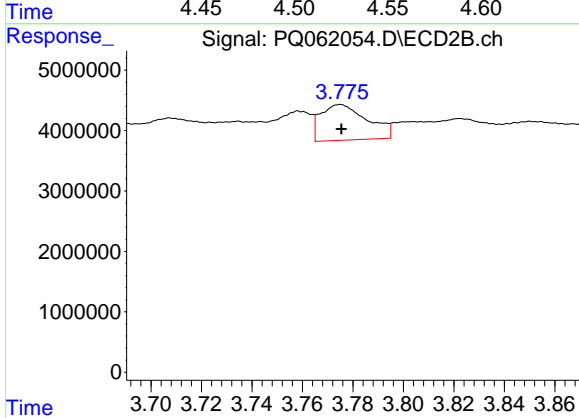
R.T.: 3.758 min
 Delta R.T.: -0.002 min
 Response: 5146448
 Conc: 66.54 ng/ml



#17 AR-1242-2

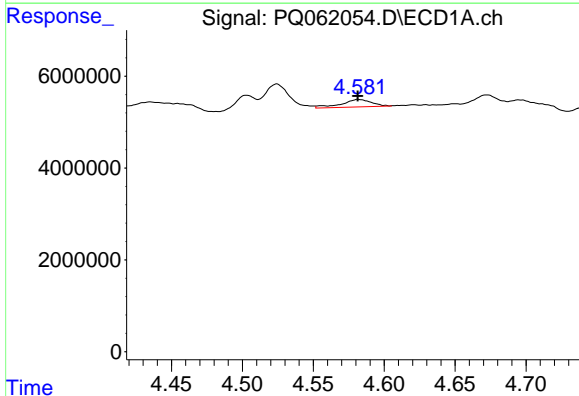
R.T.: 4.524 min
 Delta R.T.: 0.000 min
 Response: 6625302
 Conc: 34.13 ng/ml

Instrument :
 ECD_Q
 ClientSampleId :



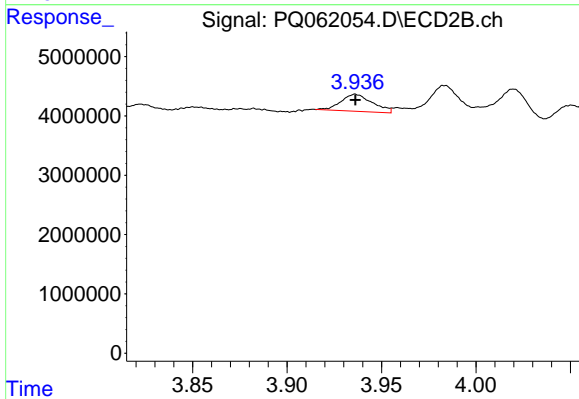
#17 AR-1242-2

R.T.: 3.775 min
 Delta R.T.: 0.000 min
 Response: 7624821
 Conc: 68.59 ng/ml



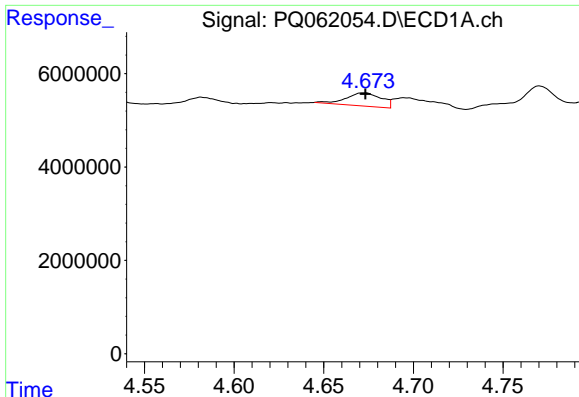
#18 AR-1242-3

R.T.: 4.582 min
 Delta R.T.: 0.000 min
 Response: 2391122
 Conc: 19.79 ng/ml



#18 AR-1242-3

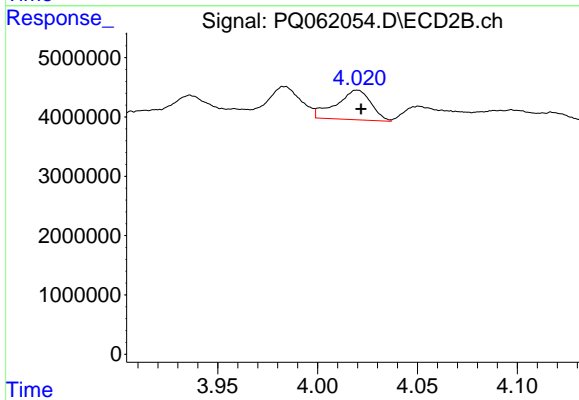
R.T.: 3.936 min
 Delta R.T.: 0.000 min
 Response: 3322002
 Conc: 56.71 ng/ml



#19 AR-1242-4

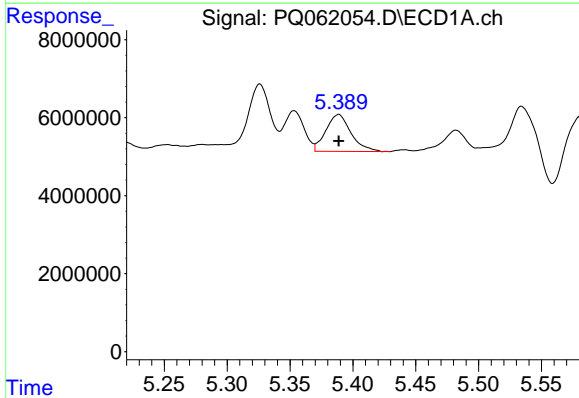
R.T.: 4.673 min
 Delta R.T.: 0.000 min
 Response: 3877291
 Conc: 39.77 ng/ml

Instrument :
 ECD_Q
 ClientSampleId :



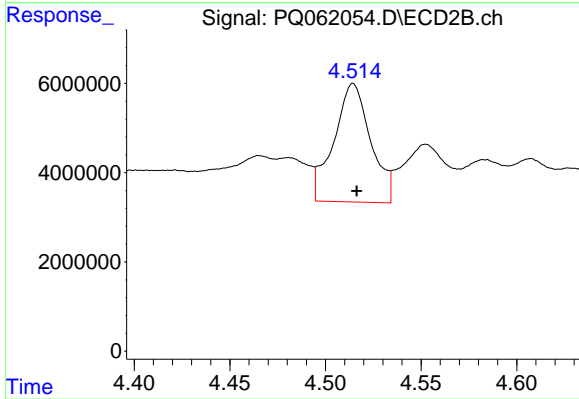
#19 AR-1242-4

R.T.: 4.020 min
 Delta R.T.: -0.002 min
 Response: 6061700
 Conc: 103.39 ng/ml



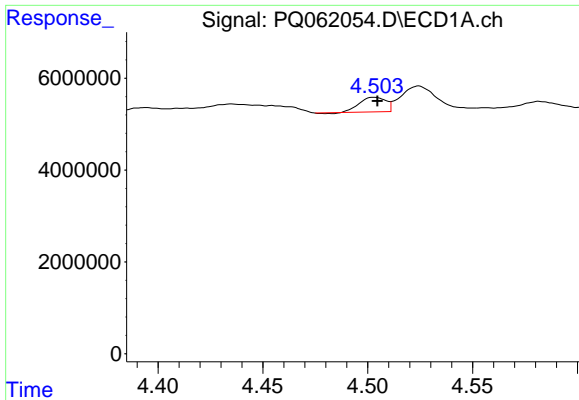
#20 AR-1242-5

R.T.: 5.389 min
 Delta R.T.: 0.000 min
 Response: 13149482
 Conc: 137.36 ng/ml



#20 AR-1242-5

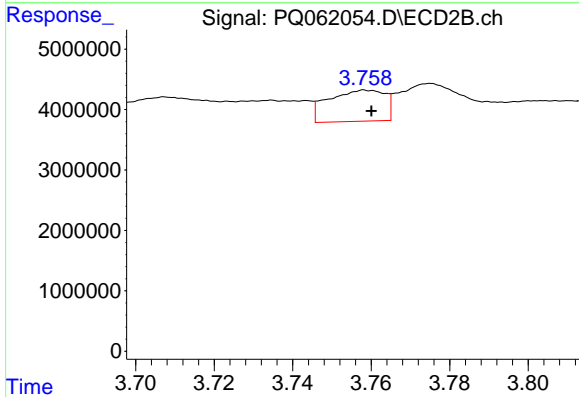
R.T.: 4.514 min
 Delta R.T.: -0.002 min
 Response: 35663461
 Conc: 430.24 ng/ml



#21 AR-1248-1

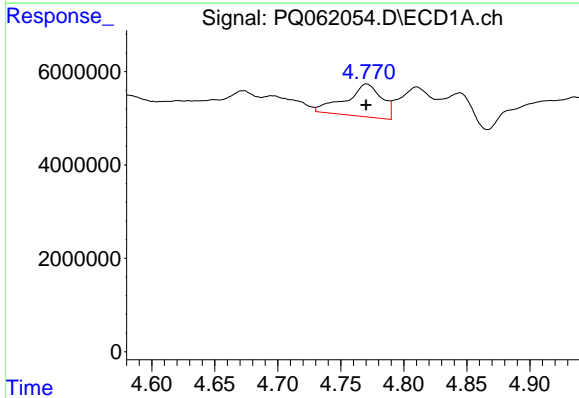
R.T.: 4.503 min
 Delta R.T.: -0.002 min
 Response: 2737220
 Conc: 26.32 ng/ml

Instrument :
 ECD_Q
 ClientSampleId :



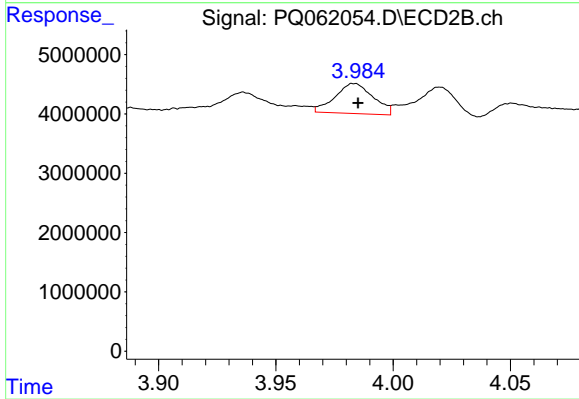
#21 AR-1248-1

R.T.: 3.758 min
 Delta R.T.: -0.002 min
 Response: 5146448
 Conc: 82.32 ng/ml



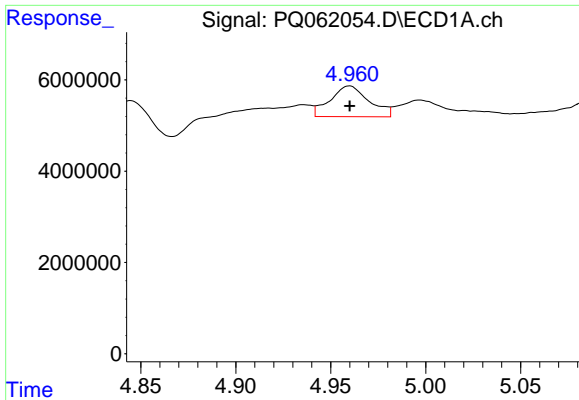
#22 AR-1248-2

R.T.: 4.770 min
 Delta R.T.: 0.000 min
 Response: 13940051
 Conc: 97.03 ng/ml



#22 AR-1248-2

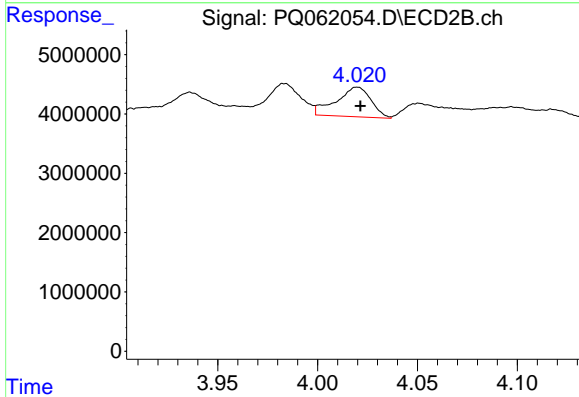
R.T.: 3.983 min
 Delta R.T.: -0.002 min
 Response: 5719648
 Conc: 61.00 ng/ml



#23 AR-1248-3

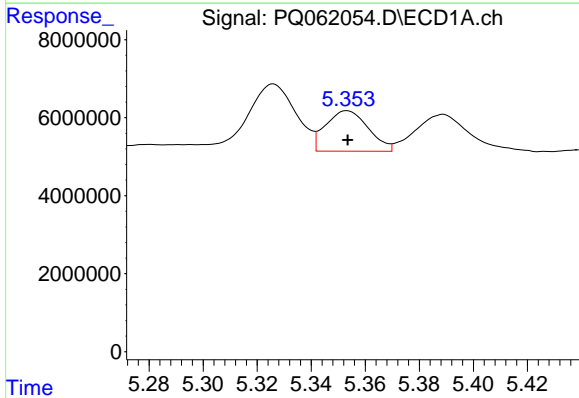
R.T.: 4.960 min
 Delta R.T.: 0.000 min
 Response: 9607114
 Conc: 55.30 ng/ml

Instrument :
 ECD_Q
 ClientSampleId :



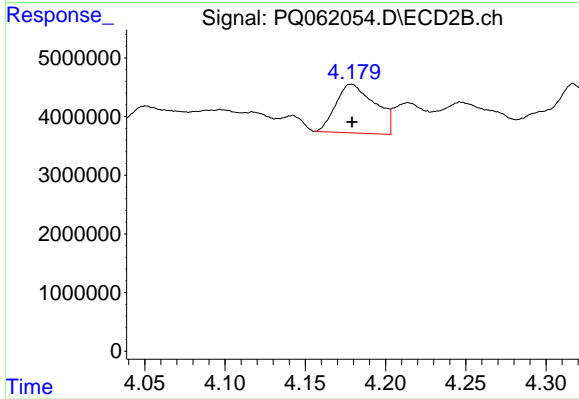
#23 AR-1248-3

R.T.: 4.020 min
 Delta R.T.: -0.002 min
 Response: 6061700
 Conc: 66.95 ng/ml



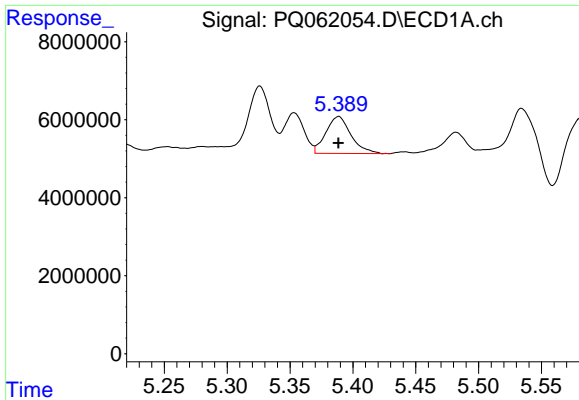
#24 AR-1248-4

R.T.: 5.353 min
 Delta R.T.: 0.000 min
 Response: 11396020
 Conc: 59.38 ng/ml



#24 AR-1248-4

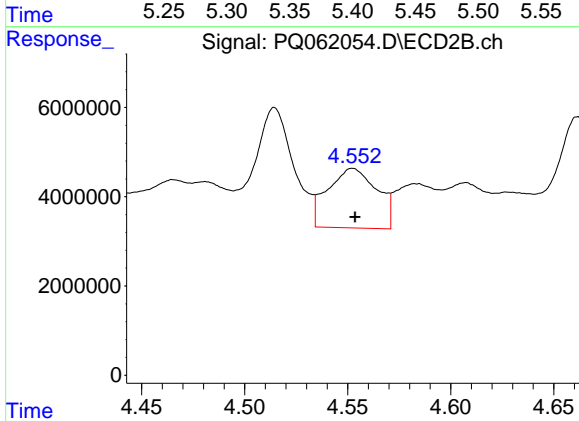
R.T.: 4.179 min
 Delta R.T.: 0.000 min
 Response: 14112834
 Conc: 125.07 ng/ml



#25 AR-1248-5

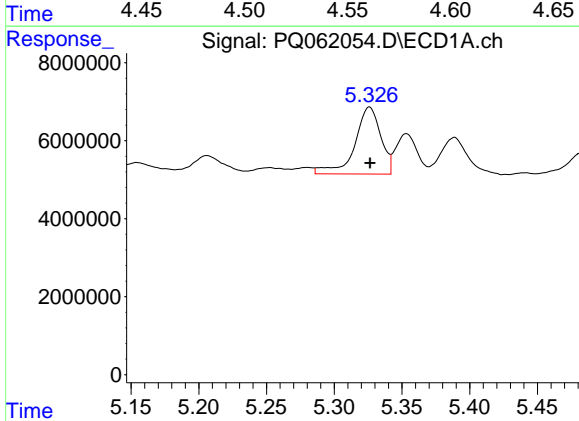
R.T.: 5.389 min
 Delta R.T.: 0.000 min
 Response: 13149482
 Conc: 72.60 ng/ml

Instrument :
 ECD_Q
 ClientSampleId :



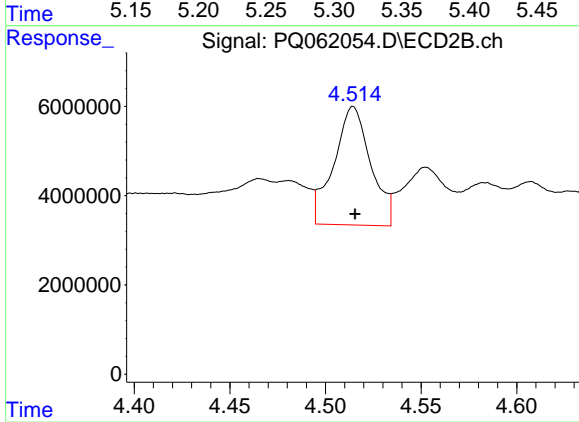
#25 AR-1248-5

R.T.: 4.552 min
 Delta R.T.: -0.001 min
 Response: 22162403
 Conc: 197.82 ng/ml



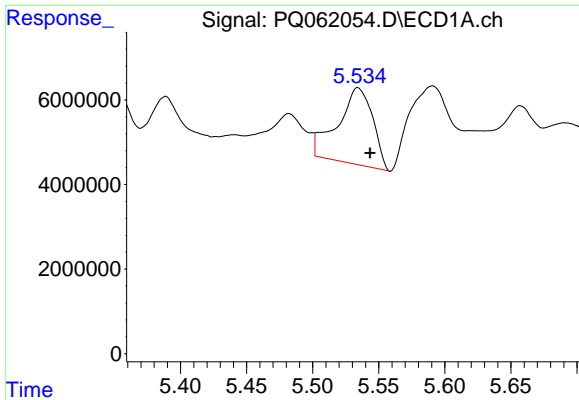
#26 AR-1254-1

R.T.: 5.326 min
 Delta R.T.: 0.000 min
 Response: 22948857
 Conc: 123.50 ng/ml



#26 AR-1254-1

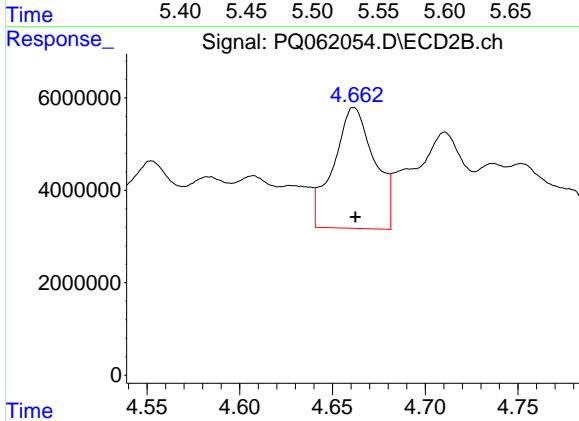
R.T.: 4.514 min
 Delta R.T.: -0.001 min
 Response: 35663461
 Conc: 220.88 ng/ml



#27 AR-1254-2

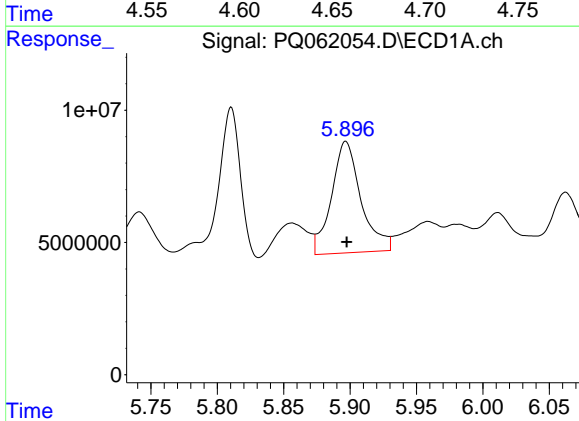
R.T.: 5.534 min
 Delta R.T.: -0.009 min
 Response: 33471397
 Conc: 115.14 ng/ml

Instrument :
 ECD_Q
 ClientSampleId :



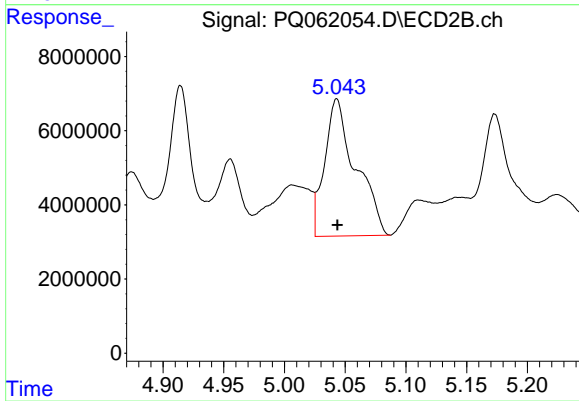
#27 AR-1254-2

R.T.: 4.662 min
 Delta R.T.: 0.000 min
 Response: 40328240
 Conc: 273.92 ng/ml



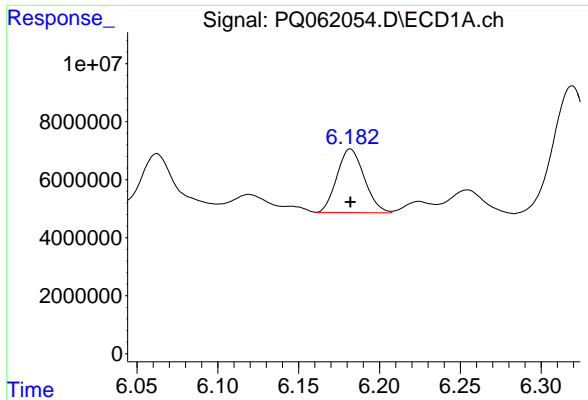
#28 AR-1254-3

R.T.: 5.897 min
 Delta R.T.: 0.000 min
 Response: 65419786
 Conc: 213.00 ng/ml



#28 AR-1254-3

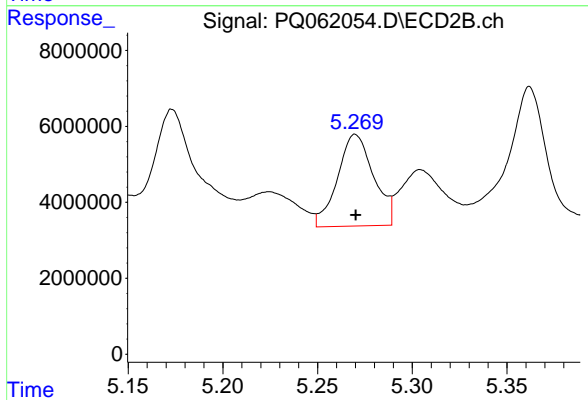
R.T.: 5.043 min
 Delta R.T.: 0.000 min
 Response: 66048980
 Conc: 282.62 ng/ml



#29 AR-1254-4

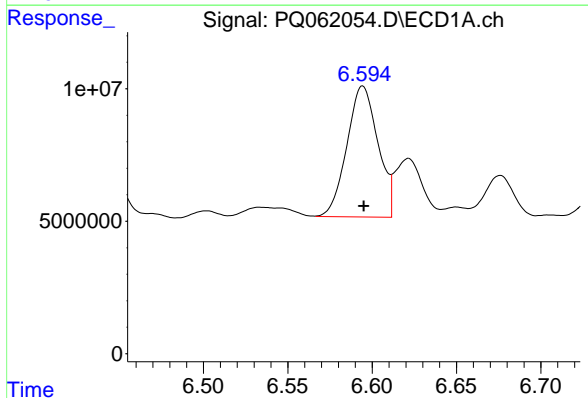
R.T.: 6.182 min
 Delta R.T.: 0.000 min
 Response: 25734400
 Conc: 110.83 ng/ml

Instrument :
 ECD_Q
 ClientSampleId :



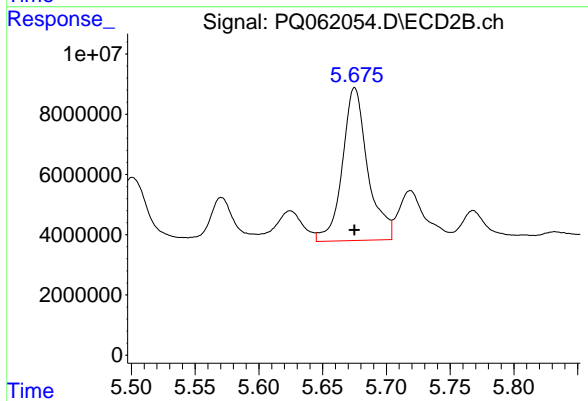
#29 AR-1254-4

R.T.: 5.270 min
 Delta R.T.: 0.000 min
 Response: 32084789
 Conc: 210.51 ng/ml



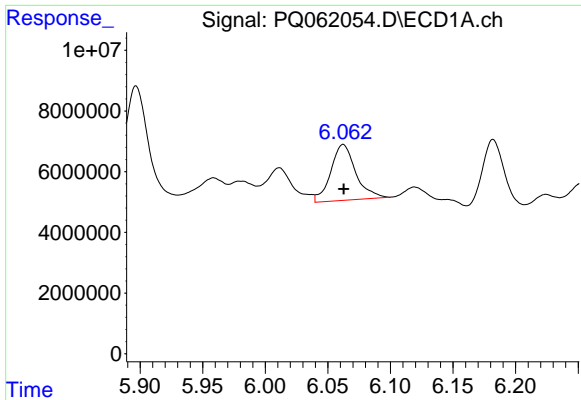
#30 AR-1254-5

R.T.: 6.594 min
 Delta R.T.: 0.000 min
 Response: 63236005
 Conc: 246.18 ng/ml



#30 AR-1254-5

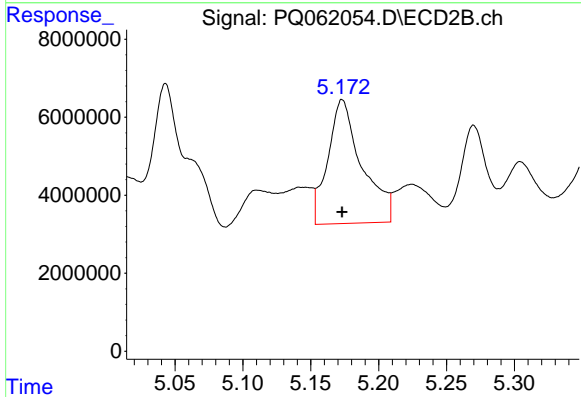
R.T.: 5.675 min
 Delta R.T.: 0.000 min
 Response: 70307077
 Conc: 304.63 ng/ml



#31 AR-1260-1

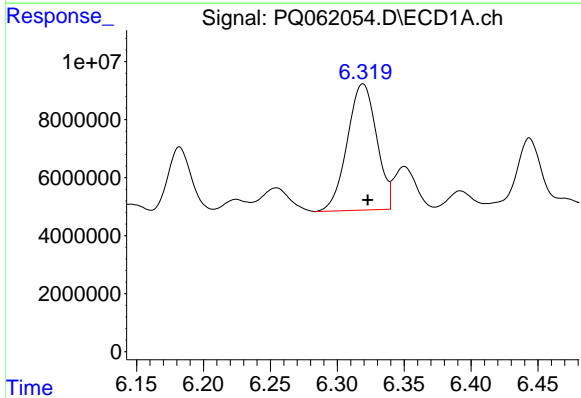
R.T.: 6.062 min
 Delta R.T.: 0.000 min
 Response: 25594449
 Conc: 108.48 ng/ml

Instrument :
 ECD_Q
 ClientSampleId :



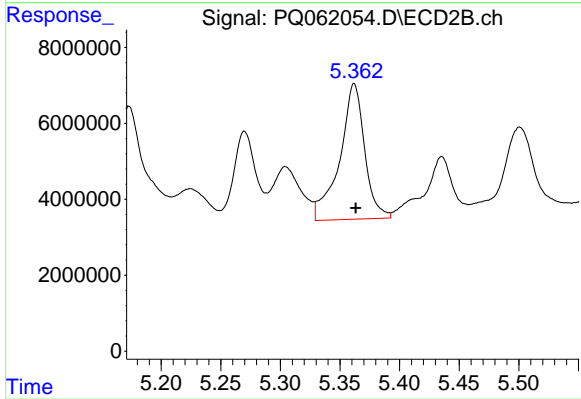
#31 AR-1260-1

R.T.: 5.173 min
 Delta R.T.: 0.000 min
 Response: 55323328
 Conc: 332.17 ng/ml



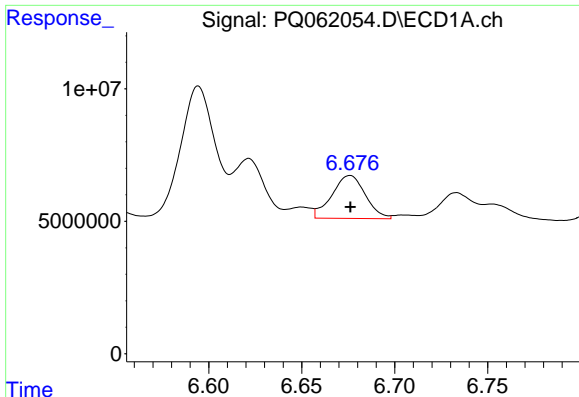
#32 AR-1260-2

R.T.: 6.319 min
 Delta R.T.: -0.004 min
 Response: 66451240
 Conc: 230.08 ng/ml



#32 AR-1260-2

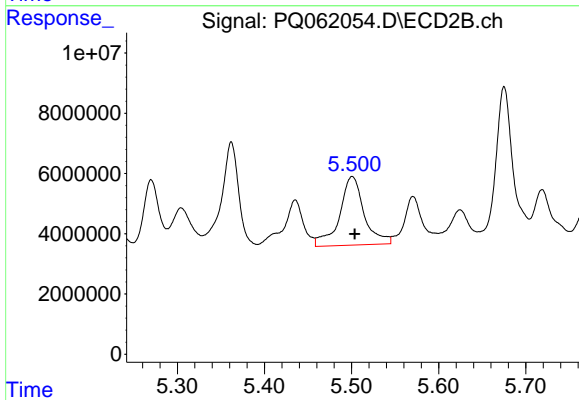
R.T.: 5.362 min
 Delta R.T.: -0.001 min
 Response: 52129245
 Conc: 250.69 ng/ml



#33 AR-1260-3

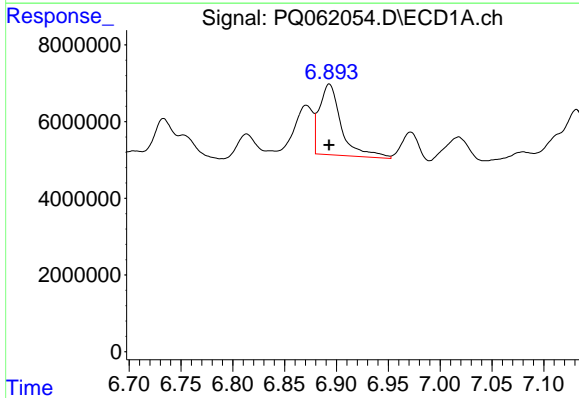
R.T.: 6.676 min
 Delta R.T.: 0.000 min
 Response: 20307529
 Conc: 115.01 ng/ml

Instrument :
 ECD_Q
 ClientSampleId :



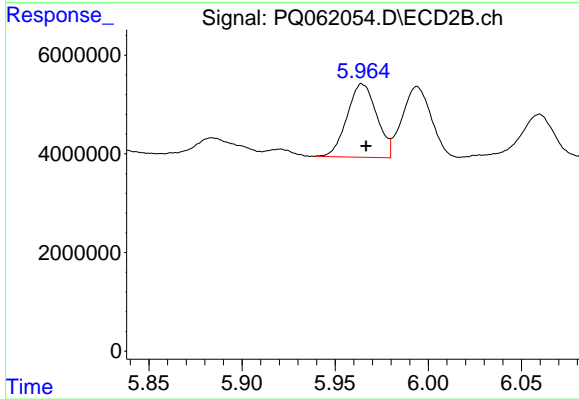
#33 AR-1260-3

R.T.: 5.501 min
 Delta R.T.: -0.003 min
 Response: 44905431
 Conc: 230.81 ng/ml



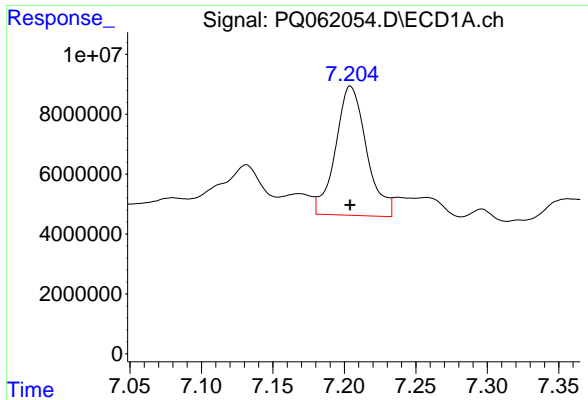
#34 AR-1260-4

R.T.: 6.893 min
 Delta R.T.: 0.000 min
 Response: 27107309
 Conc: 128.68 ng/ml



#34 AR-1260-4

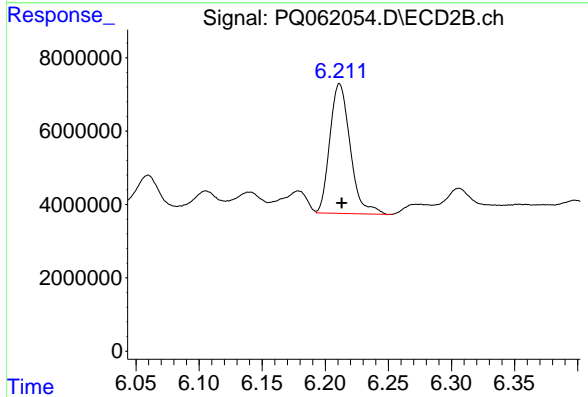
R.T.: 5.965 min
 Delta R.T.: -0.002 min
 Response: 16474169
 Conc: 112.94 ng/ml



#35 AR-1260-5

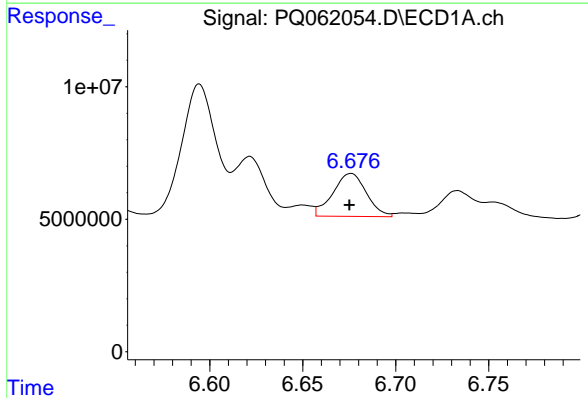
R.T.: 7.204 min
 Delta R.T.: 0.000 min
 Response: 65274381
 Conc: 158.97 ng/ml

Instrument :
 ECD_Q
 ClientSampleId :



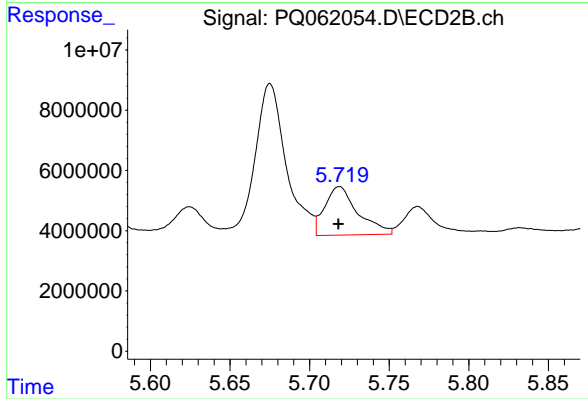
#35 AR-1260-5

R.T.: 6.211 min
 Delta R.T.: -0.002 min
 Response: 39735523
 Conc: 119.66 ng/ml



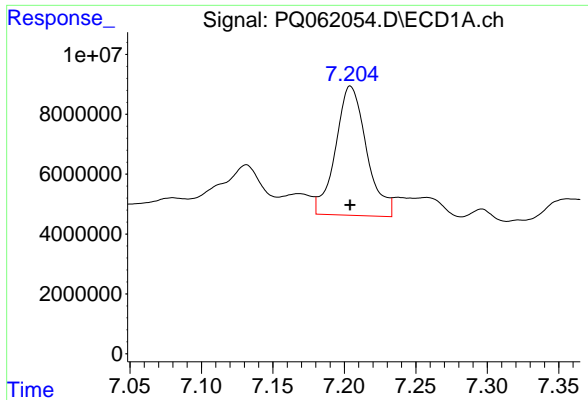
#36 AR-1262-1

R.T.: 6.676 min
 Delta R.T.: 0.000 min
 Response: 20307529
 Conc: 66.59 ng/ml



#36 AR-1262-1

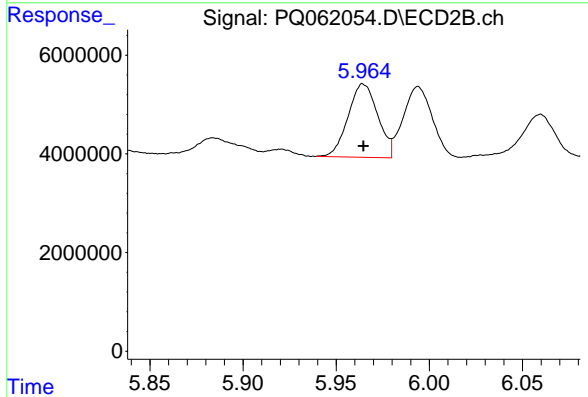
R.T.: 5.719 min
 Delta R.T.: 0.000 min
 Response: 23314610
 Conc: 100.29 ng/ml



#37 AR-1262-2

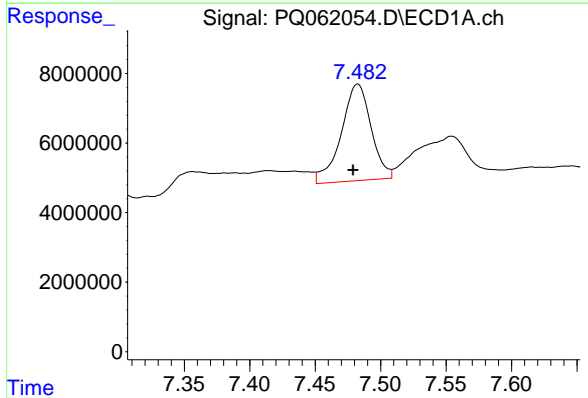
R.T.: 7.204 min
 Delta R.T.: 0.000 min
 Response: 65274381
 Conc: 123.93 ng/ml

Instrument :
 ECD_Q
 ClientSampleId :



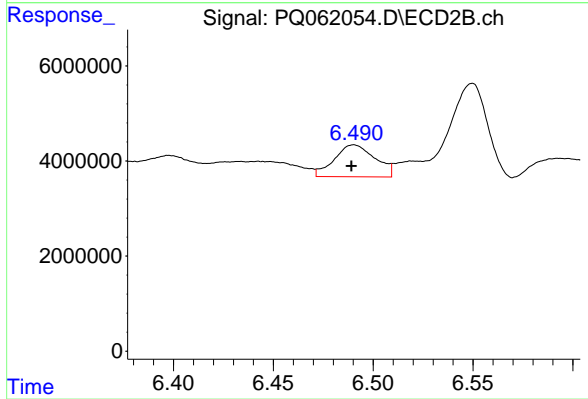
#37 AR-1262-2

R.T.: 5.965 min
 Delta R.T.: 0.000 min
 Response: 16474169
 Conc: 76.20 ng/ml



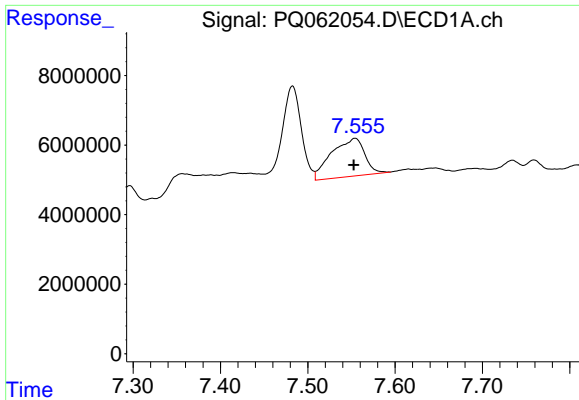
#38 AR-1262-3

R.T.: 7.483 min
 Delta R.T.: 0.003 min
 Response: 44155200
 Conc: 125.33 ng/ml



#38 AR-1262-3

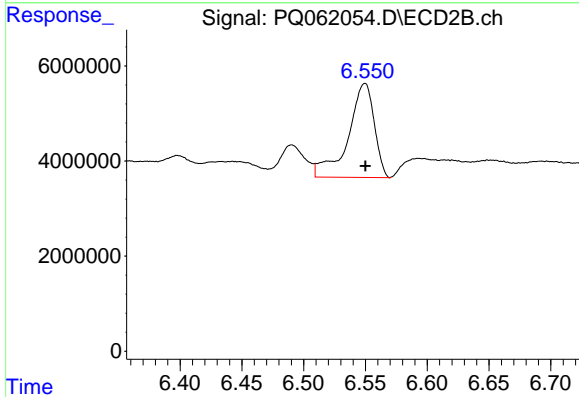
R.T.: 6.490 min
 Delta R.T.: 0.001 min
 Response: 9528647
 Conc: 54.66 ng/ml



#39 AR-1262-4

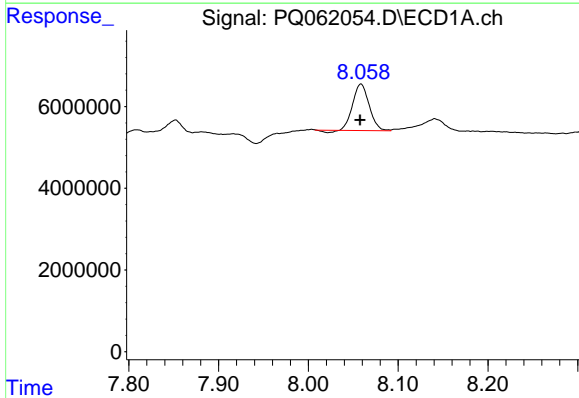
R.T.: 7.554 min
 Delta R.T.: 0.001 min
 Response: 29000469
 Conc: 108.73 ng/ml

Instrument :
 ECD_Q
 ClientSampleId :



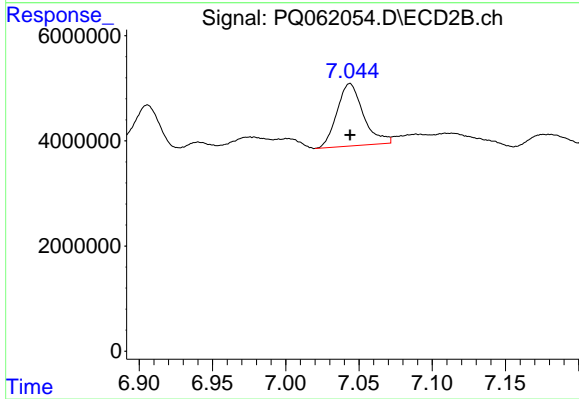
#39 AR-1262-4

R.T.: 6.550 min
 Delta R.T.: 0.000 min
 Response: 29117356
 Conc: 90.34 ng/ml



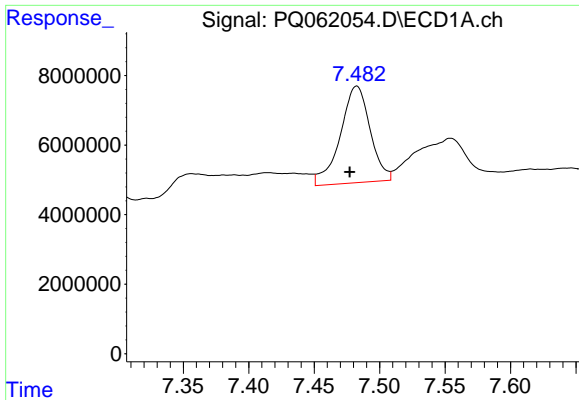
#40 AR-1262-5

R.T.: 8.059 min
 Delta R.T.: 0.001 min
 Response: 14329280
 Conc: 80.72 ng/ml



#40 AR-1262-5

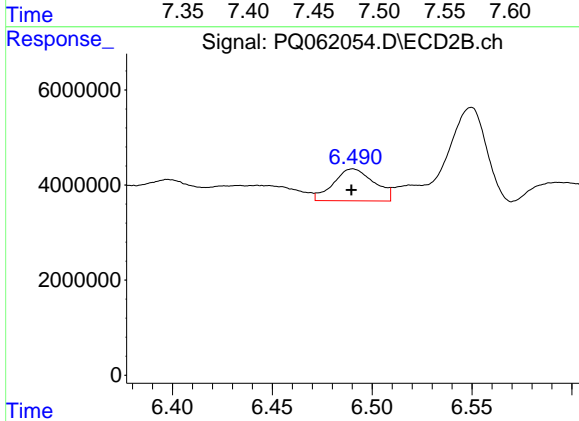
R.T.: 7.044 min
 Delta R.T.: 0.000 min
 Response: 14847598
 Conc: 95.72 ng/ml



#41 AR-1268-1

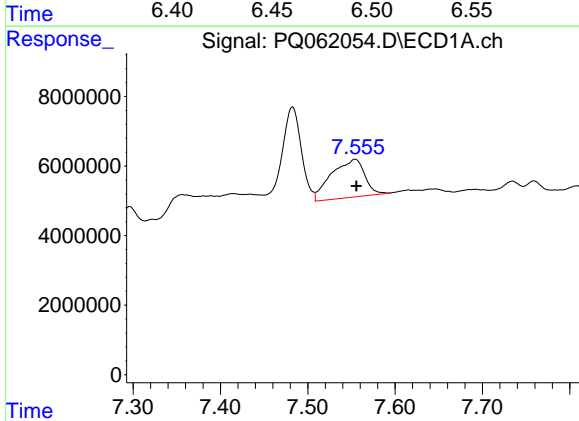
R.T.: 7.483 min
 Delta R.T.: 0.005 min
 Response: 44155200
 Conc: 77.81 ng/ml

Instrument :
 ECD_Q
 ClientSampleId :



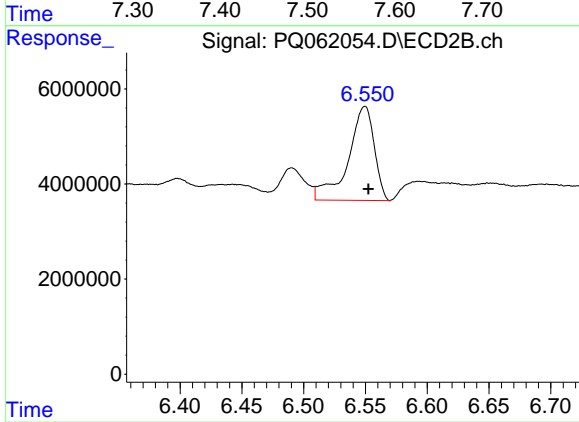
#41 AR-1268-1

R.T.: 6.490 min
 Delta R.T.: 0.000 min
 Response: 9528647
 Conc: 20.25 ng/ml



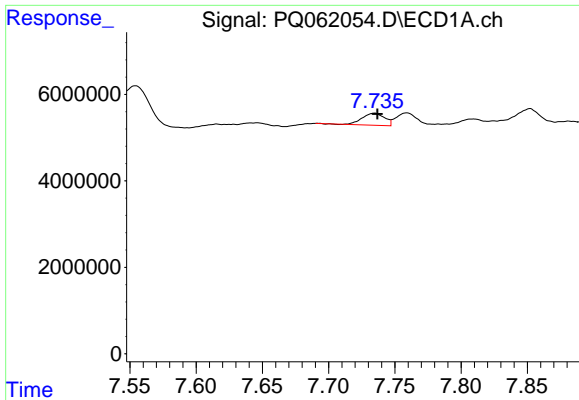
#42 AR-1268-2

R.T.: 7.554 min
 Delta R.T.: -0.002 min
 Response: 29000469
 Conc: 56.88 ng/ml



#42 AR-1268-2

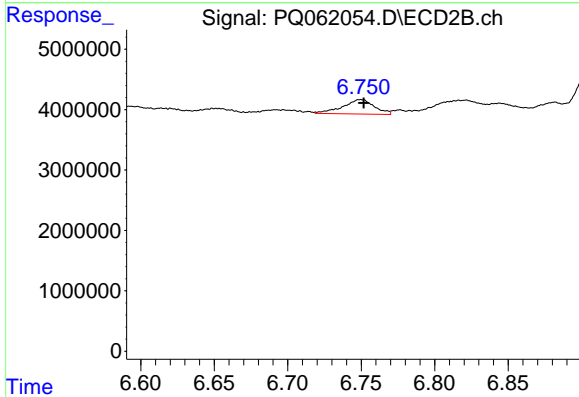
R.T.: 6.550 min
 Delta R.T.: -0.003 min
 Response: 29117356
 Conc: 68.72 ng/ml



#43 AR-1268-3

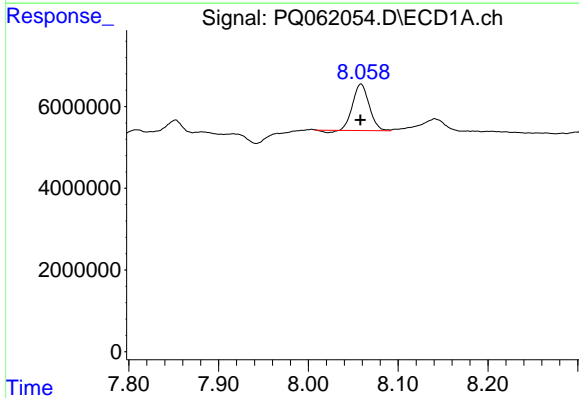
R.T.: 7.734 min
 Delta R.T.: -0.002 min
 Response: 3263626
 Conc: 7.65 ng/ml

Instrument :
 ECD_Q
 ClientSampleId :



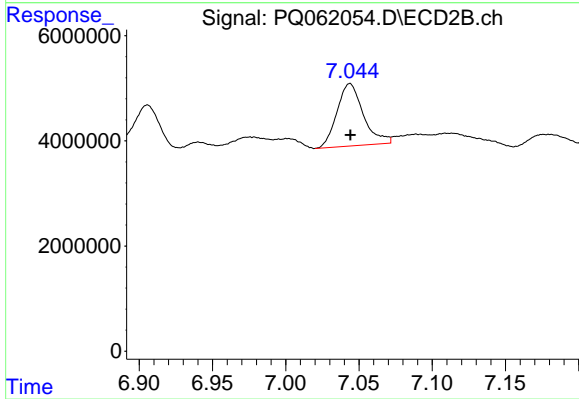
#43 AR-1268-3

R.T.: 6.750 min
 Delta R.T.: -0.002 min
 Response: 3573693
 Conc: 9.70 ng/ml



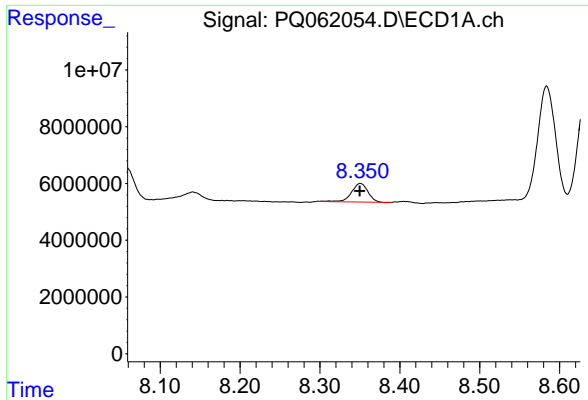
#44 AR-1268-4

R.T.: 8.059 min
 Delta R.T.: 0.000 min
 Response: 14329280
 Conc: 78.31 ng/ml



#44 AR-1268-4

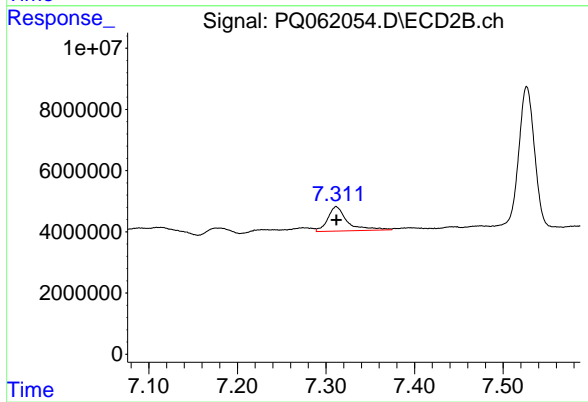
R.T.: 7.044 min
 Delta R.T.: 0.000 min
 Response: 14847598
 Conc: 92.83 ng/ml



#45 AR-1268-5

R.T.: 8.351 min
Delta R.T.: 0.000 min
Response: 9436051
Conc: 7.48 ng/ml

Instrument :
ECD_Q
ClientSampleId :



#45 AR-1268-5

R.T.: 7.312 min
Delta R.T.: 0.000 min
Response: 12402049
Conc: 10.63 ng/ml