

Data Path : Z:\pestpcbsrv\HPCHEM1\ECD\_Q\Data\PQ071218\  
 Data File : PQ030596.D  
 Signal(s) : Signal #1: ECD1A.ch Signal #2: ECD2B.ch  
 Acq On : 12 Jul 2018 10:35  
 Operator : SM\SJ  
 Sample : AR1232ICC500  
 Misc :  
 ALS Vial : 9 Sample Multiplier: 1

Instrument :  
 ECD\_Q  
 ClientSampleId :  
 AR1232ICC500

Integration File signal 1: autoint1.e  
 Integration File signal 2: autoint2.e  
 Quant Time: Jul 12 12:09:40 2018  
 Quant Method : Z:\pestpcbsrv\HPCHEM1\ECD\_Q\Method\PQ071218.M  
 Quant Title : GC EXTRACTABLES  
 QLast Update : Thu Jul 12 12:09:15 2018  
 Response via : Initial Calibration  
 Integrator: ChemStation

Volume Inj. : 2 µl  
 Signal #1 Phase : ZB-MR1 Signal #2 Phase: ZB-MR2  
 Signal #1 Info : 30Mx0.32mmx 0.50µ Signal #2 Info : 30M x 0.32mm x 0.25µm

Compound	RT#1	RT#2	Resp#1	Resp#2	ng/ml	ng/ml
-----						
System Monitoring Compounds						
1) SA Tetrachlo...	4.426	3.693	1854.7E6	618.6E6	50.000	50.000
2) SA Decachlor...	10.097	8.656	1352.1E6	870.8E6	50.000	50.000
Target Compounds						
11) L3 AR-1232-1	4.798	4.066	324.8E6	113.5E6	500.000	500.000
12) L3 AR-1232-2	5.324	4.842	160.2E6	100.3E6	500.000	500.000
13) L3 AR-1232-3	5.674	4.961	205.6E6	59820028	500.000	500.000
14) L3 AR-1232-4	5.772	5.212	169.4E6	64885837	500.000	500.000
15) L3 AR-1232-5	6.062	5.559	184.6E6	81282742	500.000	500.000
-----						

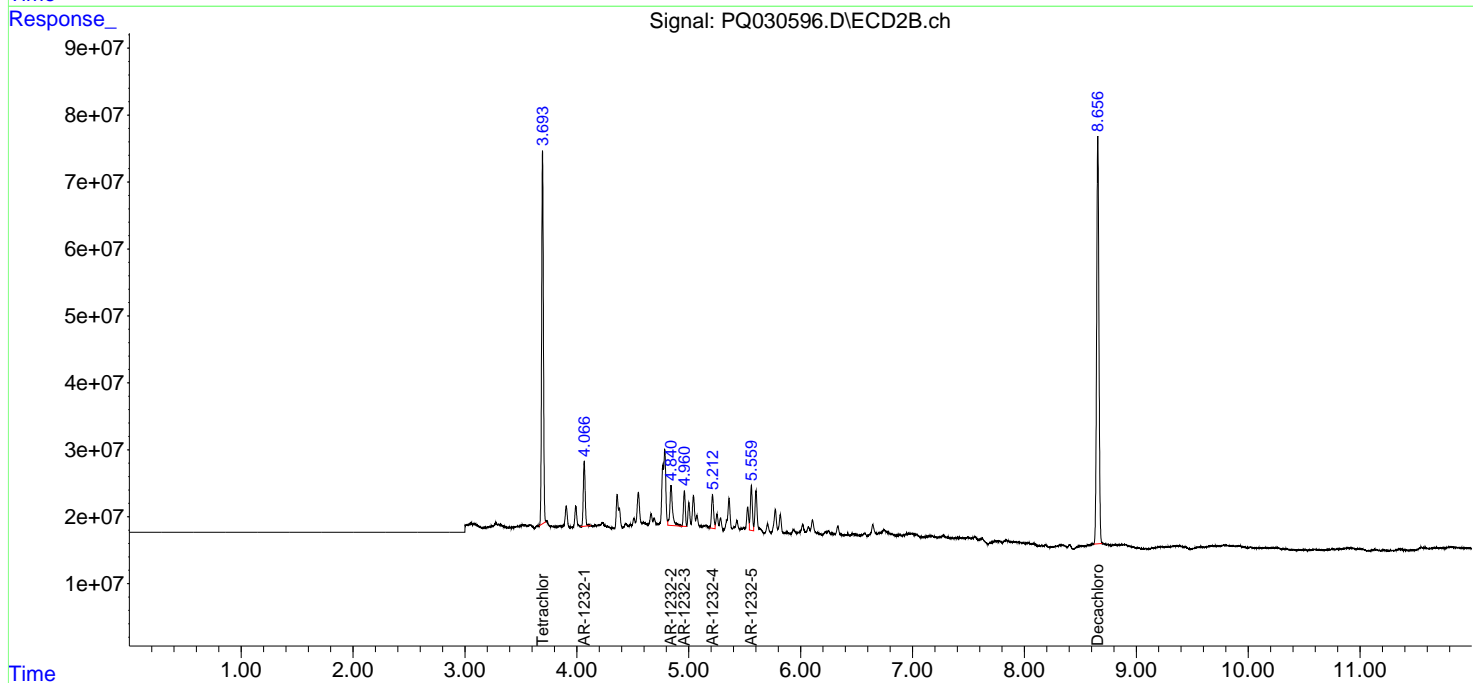
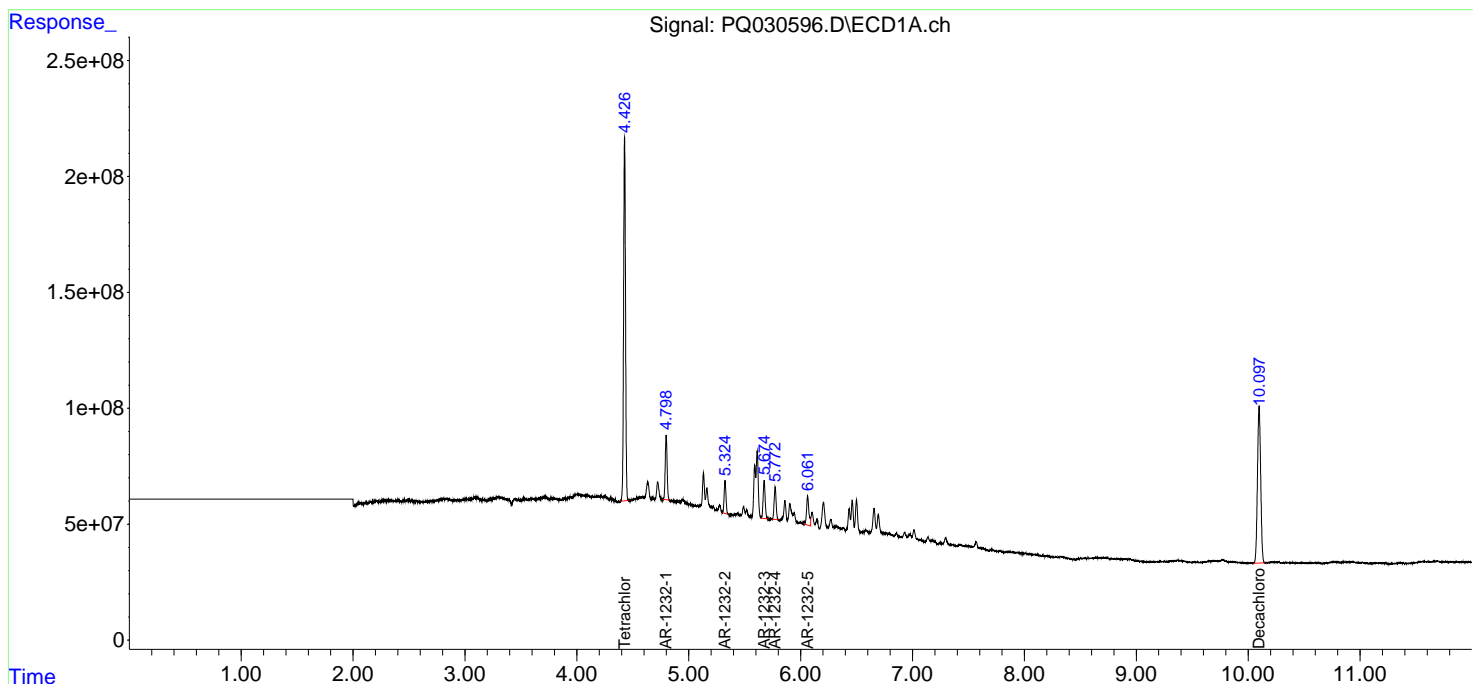
(f)=RT Delta > 1/2 Window (#)=Amounts differ by > 25% (m)=manual int.

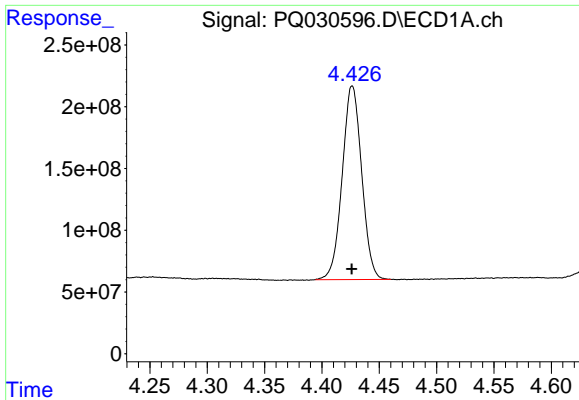
Data Path : Z:\pestpcbsrv\HPCHEM1\ECD\_Q\Data\PQ071218\  
 Data File : PQ030596.D  
 Signal(s) : Signal #1: ECD1A.ch Signal #2: ECD2B.ch  
 Acq On : 12 Jul 2018 10:35  
 Operator : SM\SJ  
 Sample : AR1232ICC500  
 Misc :  
 ALS Vial : 9 Sample Multiplier: 1

Instrument :  
 ECD\_Q  
 ClientSampleId :  
 AR1232ICC500

Integration File signal 1: autoint1.e  
 Integration File signal 2: autoint2.e  
 Quant Time: Jul 12 12:09:40 2018  
 Quant Method : Z:\pestpcbsrv\HPCHEM1\ECD\_Q\Method\PQ071218.M  
 Quant Title : GC EXTRACTABLES  
 QLast Update : Thu Jul 12 12:09:15 2018  
 Response via : Initial Calibration  
 Integrator: ChemStation

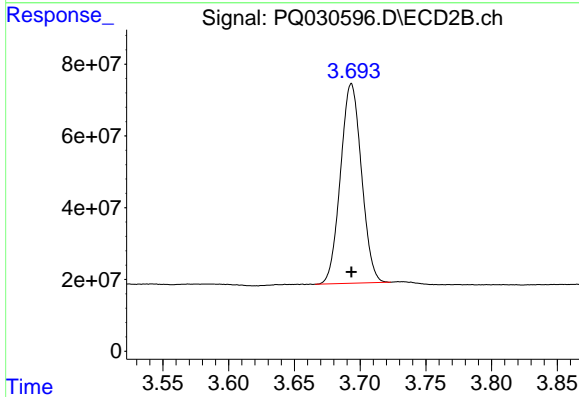
Volume Inj. : 2 µl  
 Signal #1 Phase : ZB-MR1 Signal #2 Phase: ZB-MR2  
 Signal #1 Info : 30Mx0.32mmx 0.50µ Signal #2 Info : 30M x 0.32mm x 0.25µm



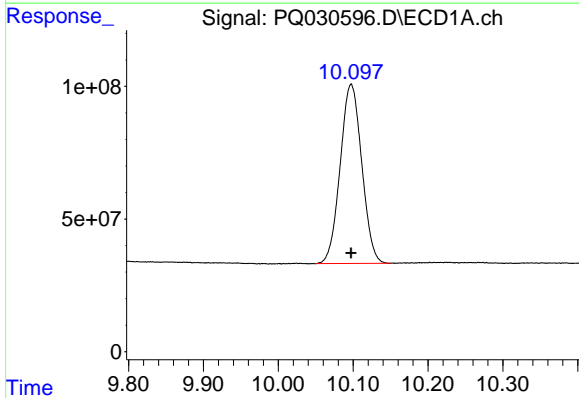


#1 Tetrachloro-m-xylene  
R.T.: 4.426 min  
Delta R.T.: 0.000 min  
Response: 1854665327  
Conc: 50.00 ng/ml

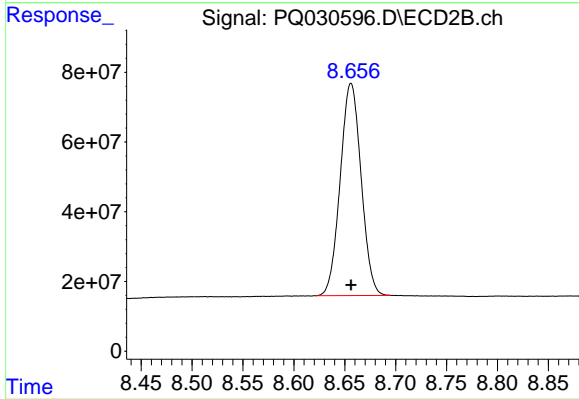
Instrument :  
ECD\_Q  
ClientSampleId :  
AR1232ICC500



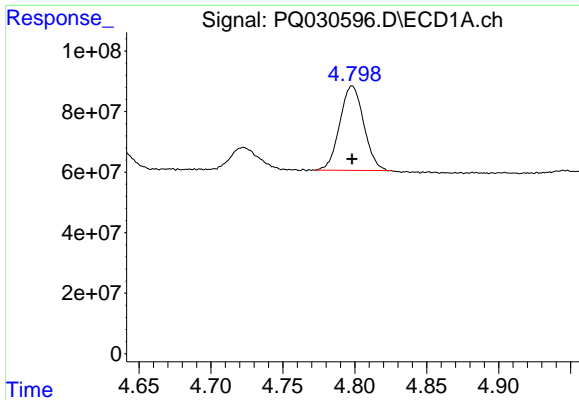
#1 Tetrachloro-m-xylene  
R.T.: 3.693 min  
Delta R.T.: 0.000 min  
Response: 618597010  
Conc: 50.00 ng/ml



#2 Decachlorobiphenyl  
R.T.: 10.097 min  
Delta R.T.: 0.000 min  
Response: 1352098606  
Conc: 50.00 ng/ml



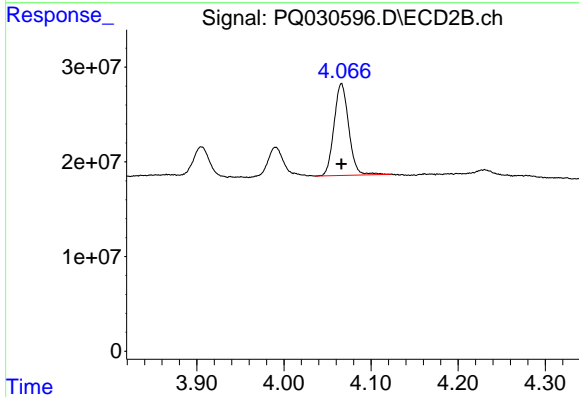
#2 Decachlorobiphenyl  
R.T.: 8.656 min  
Delta R.T.: 0.000 min  
Response: 870838240  
Conc: 50.00 ng/ml



#11 AR-1232-1

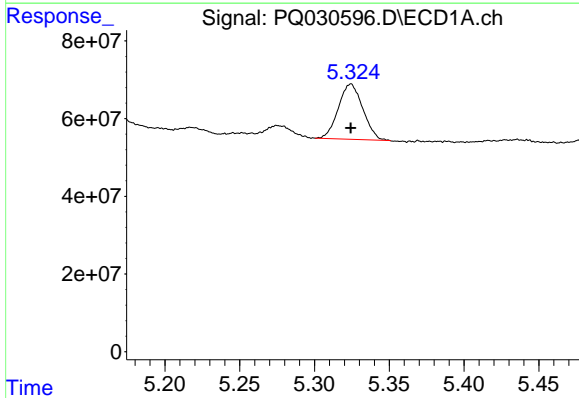
R.T.: 4.798 min  
 Delta R.T.: 0.000 min  
 Response: 324838787  
 Conc: 500.00 ng/ml

Instrument :  
 ECD\_Q  
 ClientSampleId :  
 AR1232ICC500



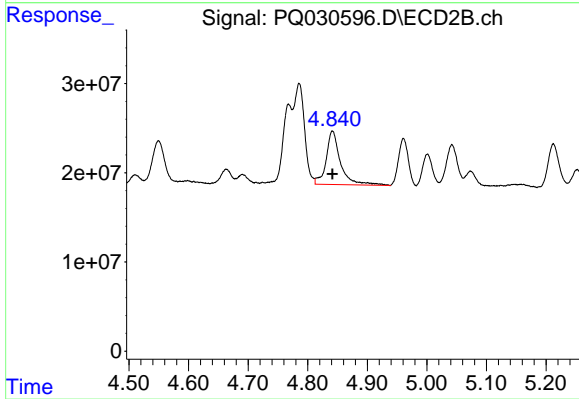
#11 AR-1232-1

R.T.: 4.066 min  
 Delta R.T.: 0.000 min  
 Response: 113549064  
 Conc: 500.00 ng/ml



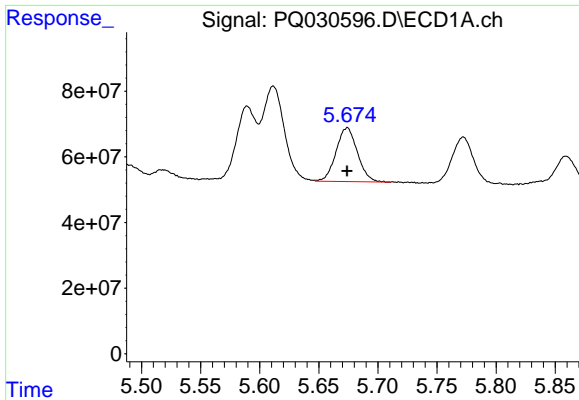
#12 AR-1232-2

R.T.: 5.324 min  
 Delta R.T.: 0.000 min  
 Response: 160154146  
 Conc: 500.00 ng/ml



#12 AR-1232-2

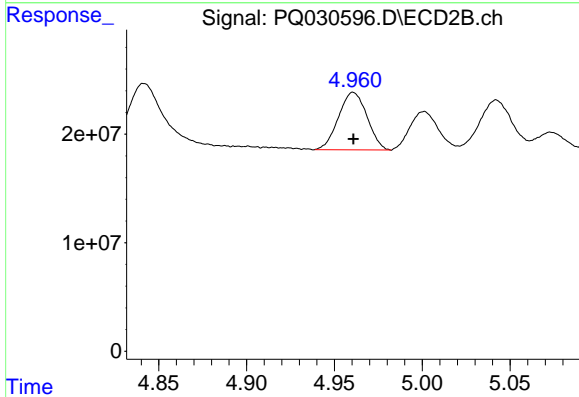
R.T.: 4.842 min  
 Delta R.T.: 0.000 min  
 Response: 100284378  
 Conc: 500.00 ng/ml



#13 AR-1232-3

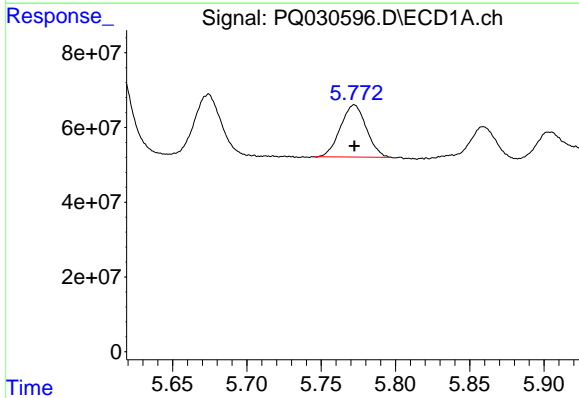
R.T.: 5.674 min  
 Delta R.T.: 0.000 min  
 Response: 205593540  
 Conc: 500.00 ng/ml

Instrument :  
 ECD\_Q  
 ClientSampleId :  
 AR1232ICC500



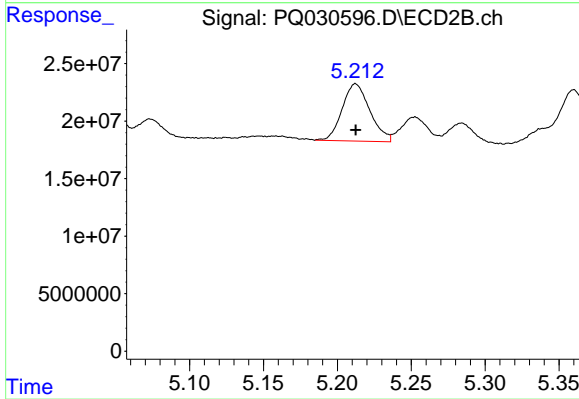
#13 AR-1232-3

R.T.: 4.961 min  
 Delta R.T.: 0.000 min  
 Response: 59820028  
 Conc: 500.00 ng/ml



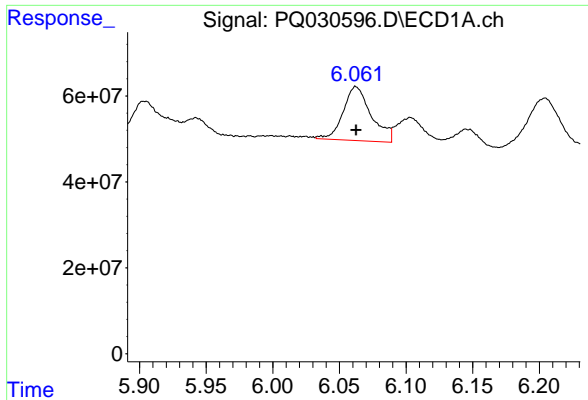
#14 AR-1232-4

R.T.: 5.772 min  
 Delta R.T.: 0.000 min  
 Response: 169436122  
 Conc: 500.00 ng/ml



#14 AR-1232-4

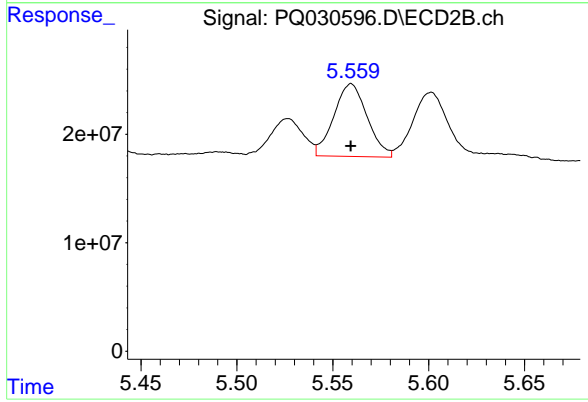
R.T.: 5.212 min  
 Delta R.T.: 0.000 min  
 Response: 64885837  
 Conc: 500.00 ng/ml



#15 AR-1232-5

R.T.: 6.062 min  
Delta R.T.: 0.000 min  
Response: 184633047  
Conc: 500.00 ng/ml

Instrument :  
ECD\_Q  
ClientSampleId :  
AR1232ICC500



#15 AR-1232-5

R.T.: 5.559 min  
Delta R.T.: 0.000 min  
Response: 81282742  
Conc: 500.00 ng/ml