

Data Path : Z:\pestpcbsrv\HPCHEM1\ECD\_Q\Data\PQ071223\  
 Data File : PQ062109.D  
 Signal(s) : Signal #1: ECD1A.ch Signal #2: ECD2B.ch  
 Acq On : 12 Jul 2023 10:12  
 Operator : YP\AJ  
 Sample : HEXANE  
 Misc :  
 ALS Vial : 1 Sample Multiplier: 1

Instrument :  
 ECD\_Q  
 ClientSampleId :

Integration File signal 1: autoint1.e  
 Integration File signal 2: autoint2.e  
 Quant Time: Jul 12 20:32:22 2023  
 Quant Method : Z:\pestpcbsrv\HPCHEM1\ECD\_Q\Method\PQ070123.M  
 Quant Title : GC EXTRACTABLES  
 QLast Update : Tue Jul 04 05:32:27 2023  
 Response via : Initial Calibration  
 Integrator: ChemStation

Volume Inj. : 2 µl  
 Signal #1 Phase : ZB-MR2 Signal #2 Phase: ZB-MR2  
 Signal #1 Info : 30Mx0.32mmx 0.50µ Signal #2 Info : 30M x 0.32mm x 0.25µm

Compound	RT#1	RT#2	Resp#1	Resp#2	ng/ml	ng/ml
System Monitoring Compounds						
1) SA Tetrachlo...	3.417	2.780	181713	351203	0.037	0.140 #
Target Compounds						
3) L1 AR-1016-1	4.502	3.772	172917	143265	1.050	1.447 #
4) L1 AR-1016-2	4.502	3.780	172917	111361	0.699	0.772
5) L1 AR-1016-3	4.574	3.936	97876	129363	0.642	1.715 #
6) L1 AR-1016-4	4.694	3.989	59652	216150	0.476	3.291 #
7) L1 AR-1016-5	4.964	4.183	537367	175400	4.415	2.140 #
8) L2 AR-1221-1	3.615	2.963	1209513	54643	20.122	1.656 #
9) L2 AR-1221-2	3.676	3.038	1049666	52600	23.361	2.071 #
10) L2 AR-1221-3	3.763	3.106	1935687	75548	13.775	0.980 #
11) L3 AR-1232-1	3.763	3.106	1935687	75548	18.330	1.318 #
12) L3 AR-1232-2	4.230	3.772	600662	143265	10.155	2.153 #
13) L3 AR-1232-3	4.502	3.936	172917	129363	1.529	3.744 #
14) L3 AR-1232-4	4.694	4.033	59652	142021	1.053	4.775 #
15) L3 AR-1232-5	4.775	4.183	116637	175400	2.912	4.919 #
16) L4 AR-1242-1	4.502	3.750	172917	229575	1.323	2.968 #
17) L4 AR-1242-2	4.502	3.772	172917	143265	0.891	1.289 #
18) L4 AR-1242-3	4.574	3.936	97876	129363	0.810	2.208 #
19) L4 AR-1242-4	4.694	4.033	59652	142021	0.612	2.422 #
20) L4 AR-1242-5	5.408	4.523	484560	213416	5.062	2.575 #
21) L5 AR-1248-1	4.502	3.750	172917	229575	1.663	3.672 #
22) L5 AR-1248-2	4.775	3.989	116637	216150	0.812	2.305 #
23) L5 AR-1248-3	4.964	4.033	537367	142021	3.093	1.569 #
24) L5 AR-1248-4	5.363	4.183	1411909	175400	7.356	1.554 #
25) L5 AR-1248-5	5.408	4.546	484560	239722	2.675	2.140
26) L6 AR-1254-1	5.330	4.523	2164829	213416	11.650	1.322 #
27) L6 AR-1254-2	5.523	4.658	111251	143650	0.383	0.976 #
28) L6 AR-1254-3	5.940f	5.055	533189	886963	1.736	3.795 #
29) L6 AR-1254-4	6.192	5.255	830445	75406	3.577	0.495 #
30) L6 AR-1254-5	6.562f	5.676	6122100	546291	23.833	2.367 #
31) L7 AR-1260-1	6.065	5.185	112714	371480	0.478	2.230 #
32) L7 AR-1260-2	0.000	5.353	0	256490	N.D.	1.233 #
33) L7 AR-1260-3	0.000	5.474f	0	335188	N.D.	1.723 #
34) L7 AR-1260-4	0.000	5.966	0	115854	N.D.	0.794 #
35) L7 AR-1260-5	0.000	6.165f	0	1280610	N.D.	3.857 #
36) L8 AR-1262-1	0.000	5.707	0	406670	N.D.	1.749 #
37) L8 AR-1262-2	0.000	5.966	0	115854	N.D.	0.536 #
38) L8 AR-1262-3	7.461	6.498	393308	407998	1.116	2.340 #
39) L8 AR-1262-4	0.000	6.547	0	364239	N.D.	1.130 #
40) L8 AR-1262-5	8.103f	0.000	172865	0	0.974	N.D. #
41) L9 AR-1268-1	7.461	6.498	393308	407998	0.693	0.867 #
42) L9 AR-1268-2	0.000	6.547	0	364239	N.D.	0.860 #

Data Path : Z:\pestpcbsrv\HPCHEM1\ECD\_Q\Data\PQ071223\  
 Data File : PQ062109.D  
 Signal(s) : Signal #1: ECD1A.ch Signal #2: ECD2B.ch  
 Acq On : 12 Jul 2023 10:12  
 Operator : YP\AJ  
 Sample : HEXANE  
 Misc :  
 ALS Vial : 1 Sample Multiplier: 1

Instrument :  
 ECD\_Q  
 ClientSampleId :

Integration File signal 1: autoint1.e  
 Integration File signal 2: autoint2.e  
 Quant Time: Jul 12 20:32:22 2023  
 Quant Method : Z:\pestpcbsrv\HPCHEM1\ECD\_Q\Method\PQ070123.M  
 Quant Title : GC EXTRACTABLES  
 QLast Update : Tue Jul 04 05:32:27 2023  
 Response via : Initial Calibration  
 Integrator: ChemStation

Volume Inj. : 2 µl  
 Signal #1 Phase : ZB-MR1 Signal #2 Phase: ZB-MR2  
 Signal #1 Info : 30Mx0.32mmx 0.50µ Signal #2 Info : 30M x 0.32mm x 0.25µm

	Compound	RT#1	RT#2	Resp#1	Resp#2	ng/ml	ng/ml
43)	L9 AR-1268-3	0.000	6.763	0	2565842	N.D.	6.966 #
44)	L9 AR-1268-4	8.103f	0.000	172865	0	0.945	N.D. #
45)	L9 AR-1268-5	8.341	7.302	1283423	927680	1.018	0.795

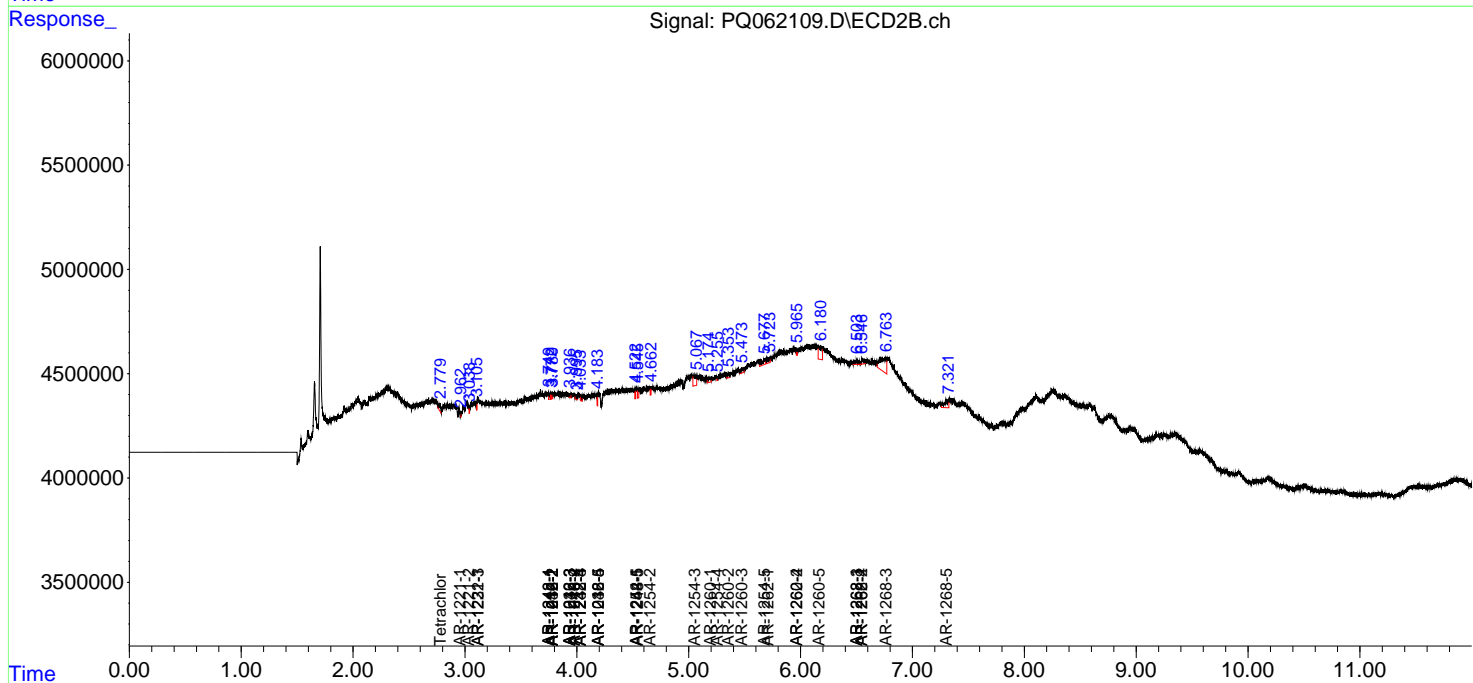
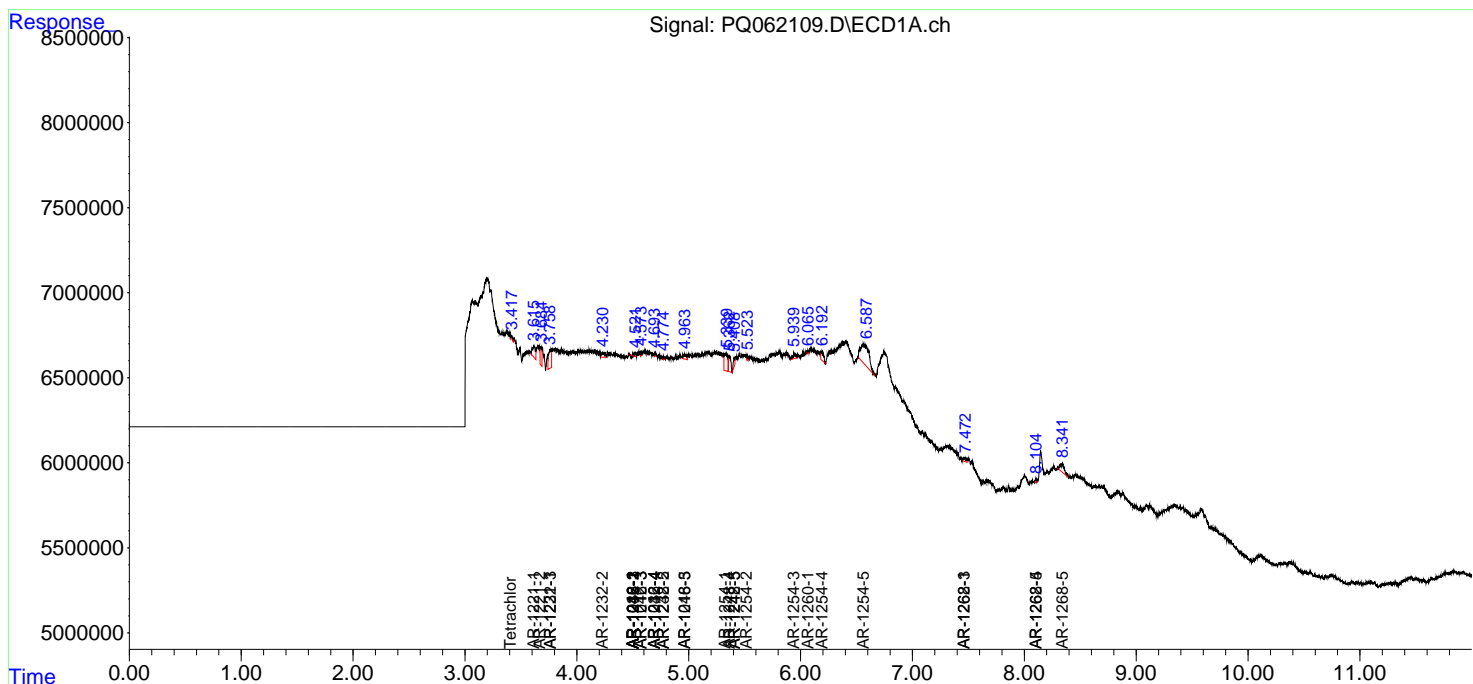
(f)=RT Delta > 1/2 Window (#)=Amounts differ by > 25% (m)=manual int.

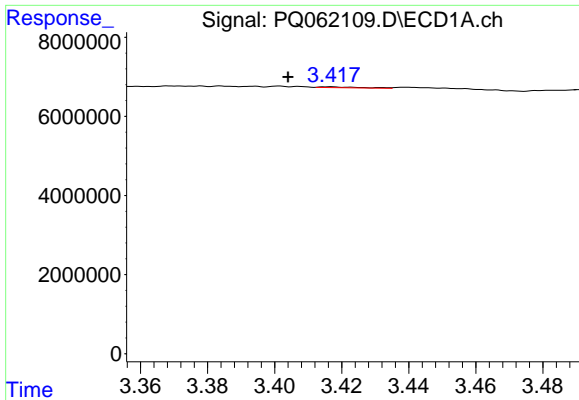
Data Path : Z:\pestpcbsrv\HPCHEM1\ECD\_Q\Data\PQ071223\  
 Data File : PQ062109.D  
 Signal(s) : Signal #1: ECD1A.ch Signal #2: ECD2B.ch  
 Acq On : 12 Jul 2023 10:12  
 Operator : YP\AJ  
 Sample : HEXANE  
 Misc :  
 ALS Vial : 1 Sample Multiplier: 1

Instrument :  
 ECD\_Q  
 ClientSampleId :

Integration File signal 1: autoint1.e  
 Integration File signal 2: autoint2.e  
 Quant Time: Jul 12 20:32:22 2023  
 Quant Method : Z:\pestpcbsrv\HPCHEM1\ECD\_Q\Method\PQ070123.M  
 Quant Title : GC EXTRACTABLES  
 QLast Update : Tue Jul 04 05:32:27 2023  
 Response via : Initial Calibration  
 Integrator: ChemStation

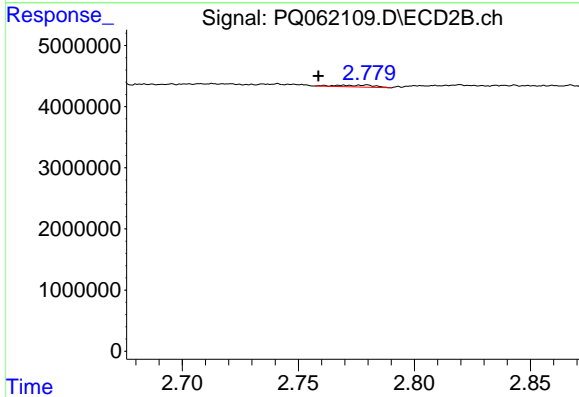
Volume Inj. : 2 µl  
 Signal #1 Phase : ZB-MR1 Signal #2 Phase: ZB-MR2  
 Signal #1 Info : 30Mx0.32mmx 0.50µ Signal #2 Info : 30M x 0.32mm x 0.25µm



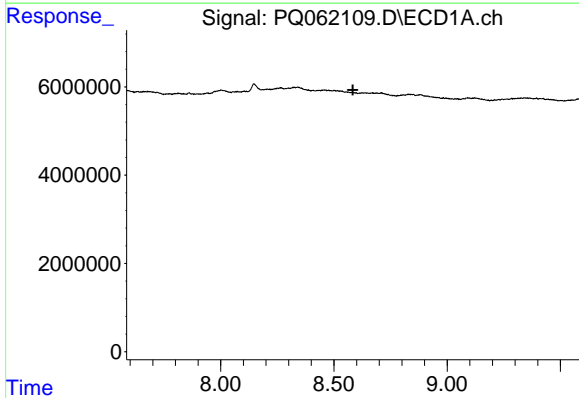


#1 Tetrachloro-m-xylene  
 R.T.: 3.417 min  
 Delta R.T.: 0.013 min  
 Response: 181713  
 Conc: 0.04 ng/ml

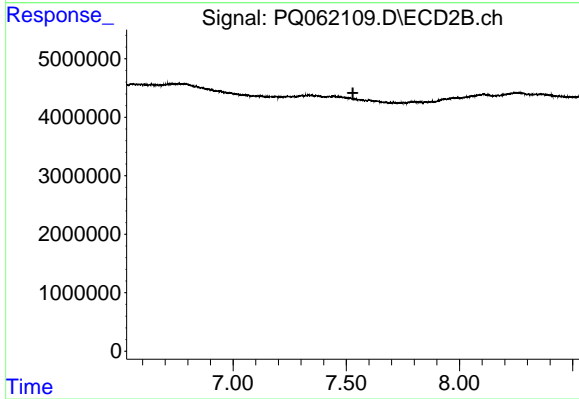
Instrument :  
 ECD\_Q  
 ClientSampleId :



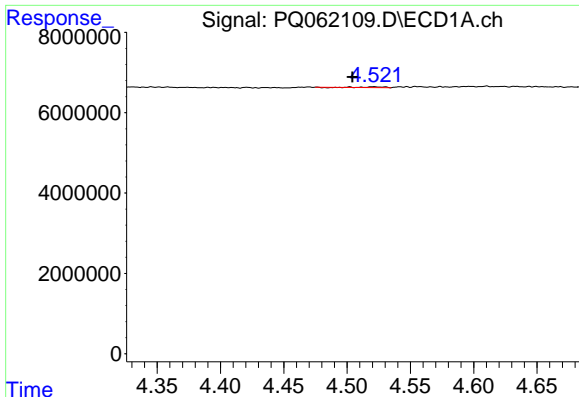
#1 Tetrachloro-m-xylene  
 R.T.: 2.780 min  
 Delta R.T.: 0.021 min  
 Response: 351203  
 Conc: 0.14 ng/ml



#2 Decachlorobiphenyl  
 R.T.: 0.000 min  
 Exp R.T. : 8.584 min  
 Response: 0  
 Conc: N.D.



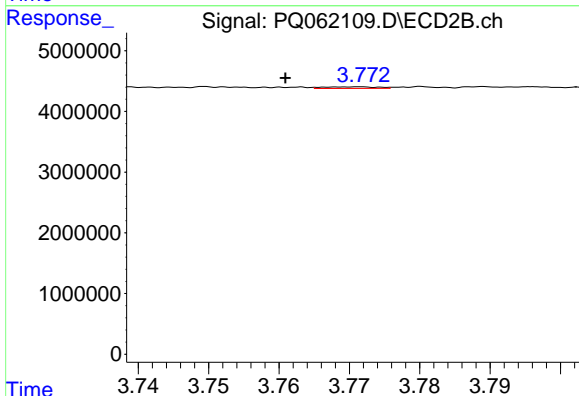
#2 Decachlorobiphenyl  
 R.T.: 0.000 min  
 Exp R.T. : 7.529 min  
 Response: 0  
 Conc: N.D.



#3 AR-1016-1

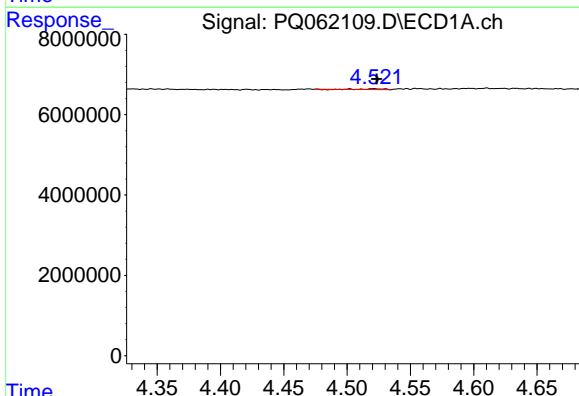
R.T.: 4.502 min  
 Delta R.T.: -0.002 min  
 Response: 172917  
 Conc: 1.05 ng/ml

Instrument :  
 ECD\_Q  
 ClientSampleId :



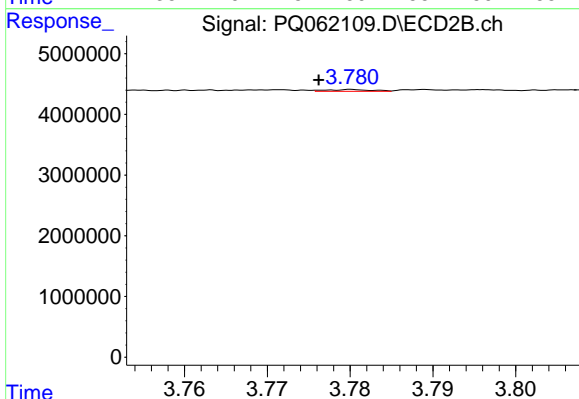
#3 AR-1016-1

R.T.: 3.772 min  
 Delta R.T.: 0.011 min  
 Response: 143265  
 Conc: 1.45 ng/ml



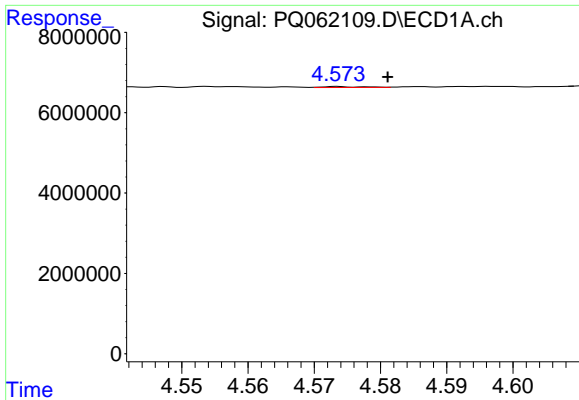
#4 AR-1016-2

R.T.: 4.502 min  
 Delta R.T.: -0.021 min  
 Response: 172917  
 Conc: 0.70 ng/ml



#4 AR-1016-2

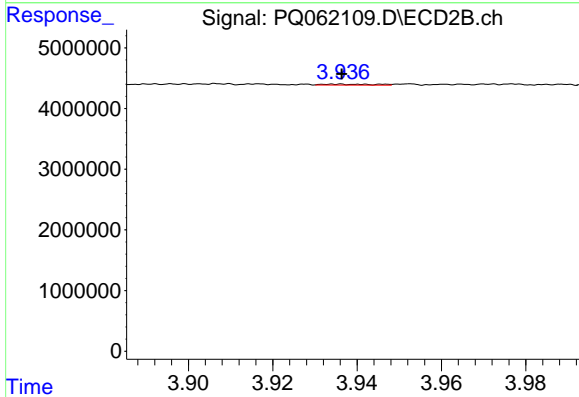
R.T.: 3.780 min  
 Delta R.T.: 0.004 min  
 Response: 111361  
 Conc: 0.77 ng/ml



#5 AR-1016-3

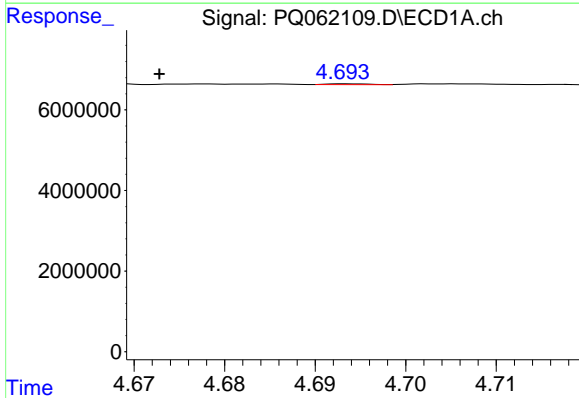
R.T.: 4.574 min  
 Delta R.T.: -0.008 min  
 Response: 97876  
 Conc: 0.64 ng/ml

Instrument :  
 ECD\_Q  
 ClientSampleId :



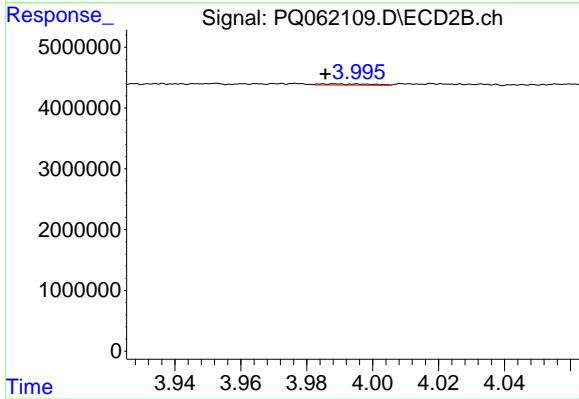
#5 AR-1016-3

R.T.: 3.936 min  
 Delta R.T.: 0.000 min  
 Response: 129363  
 Conc: 1.71 ng/ml



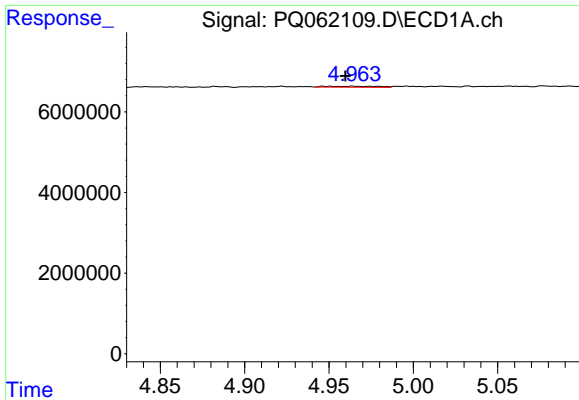
#6 AR-1016-4

R.T.: 4.694 min  
 Delta R.T.: 0.021 min  
 Response: 59652  
 Conc: 0.48 ng/ml



#6 AR-1016-4

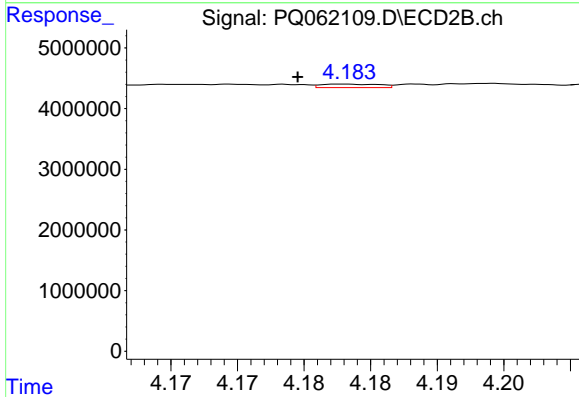
R.T.: 3.989 min  
 Delta R.T.: 0.003 min  
 Response: 216150  
 Conc: 3.29 ng/ml



#7 AR-1016-5

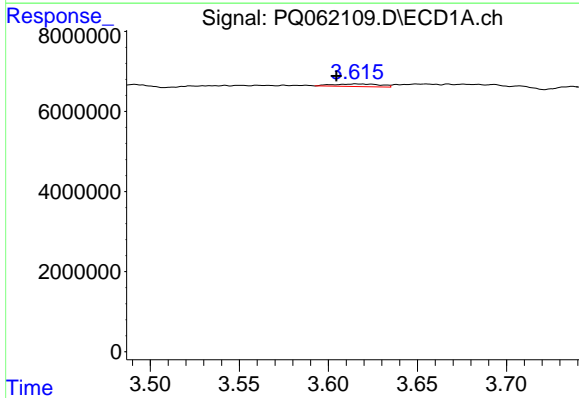
R.T.: 4.964 min  
 Delta R.T.: 0.004 min  
 Response: 537367  
 Conc: 4.41 ng/ml

Instrument :  
 ECD\_Q  
 ClientSampleId :



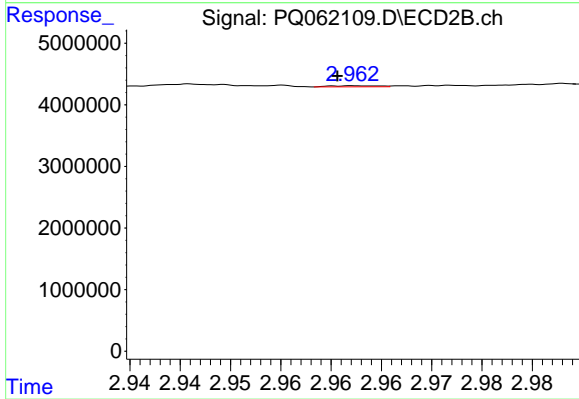
#7 AR-1016-5

R.T.: 4.183 min  
 Delta R.T.: 0.004 min  
 Response: 175400  
 Conc: 2.14 ng/ml



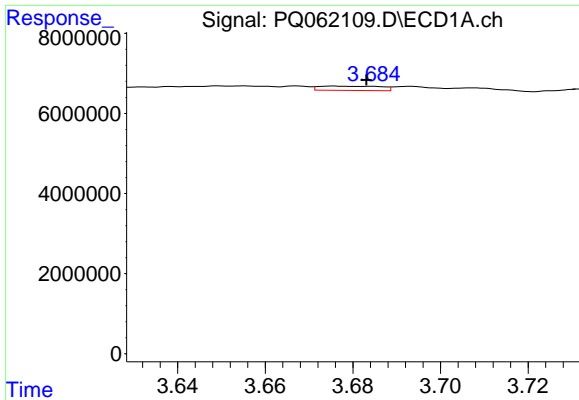
#8 AR-1221-1

R.T.: 3.615 min  
 Delta R.T.: 0.011 min  
 Response: 1209513  
 Conc: 20.12 ng/ml



#8 AR-1221-1

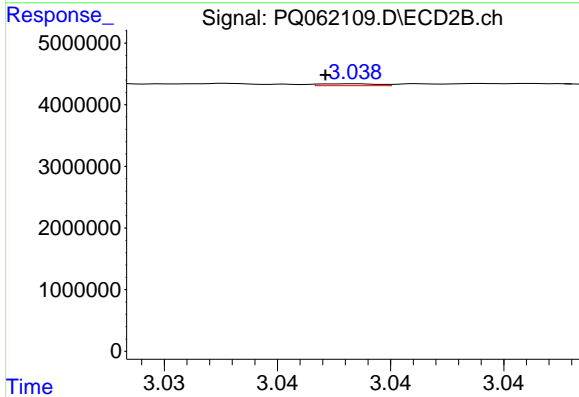
R.T.: 2.963 min  
 Delta R.T.: 0.002 min  
 Response: 54643  
 Conc: 1.66 ng/ml



#9 AR-1221-2

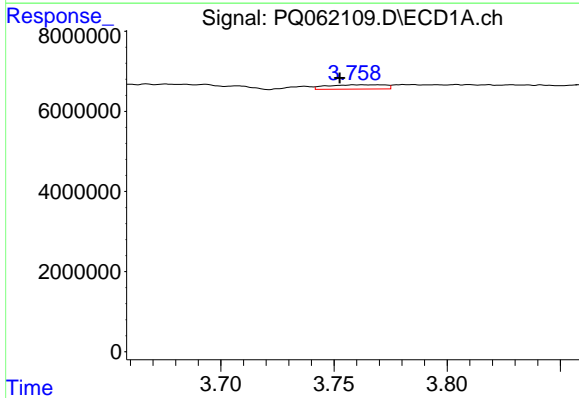
R.T.: 3.676 min  
 Delta R.T.: -0.007 min  
 Response: 1049666  
 Conc: 23.36 ng/ml

Instrument :  
 ECD\_Q  
 ClientSampleId :



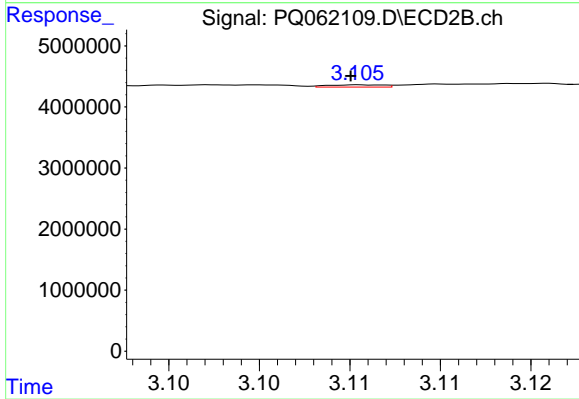
#9 AR-1221-2

R.T.: 3.038 min  
 Delta R.T.: 0.001 min  
 Response: 52600  
 Conc: 2.07 ng/ml



#10 AR-1221-3

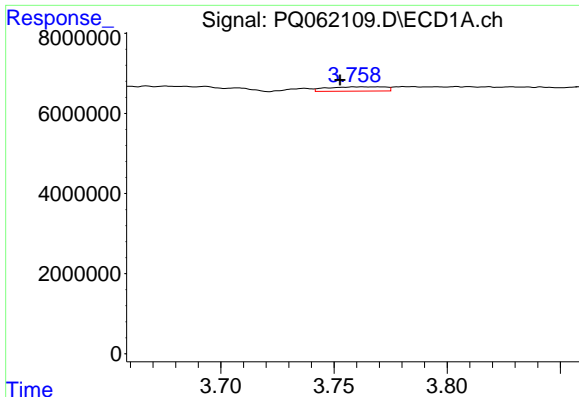
R.T.: 3.763 min  
 Delta R.T.: 0.010 min  
 Response: 1935687  
 Conc: 13.78 ng/ml



#10 AR-1221-3

R.T.: 3.106 min  
 Delta R.T.: 0.000 min  
 Response: 75548  
 Conc: 0.98 ng/ml

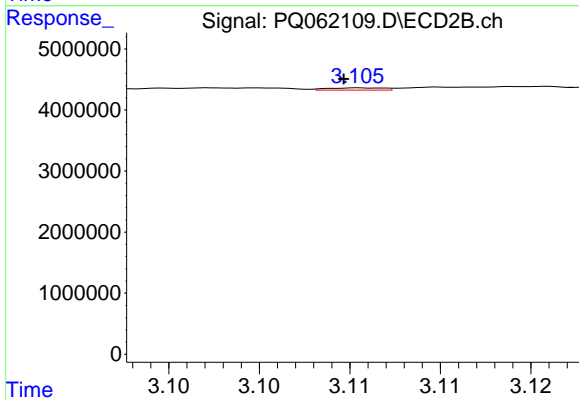




#11 AR-1232-1

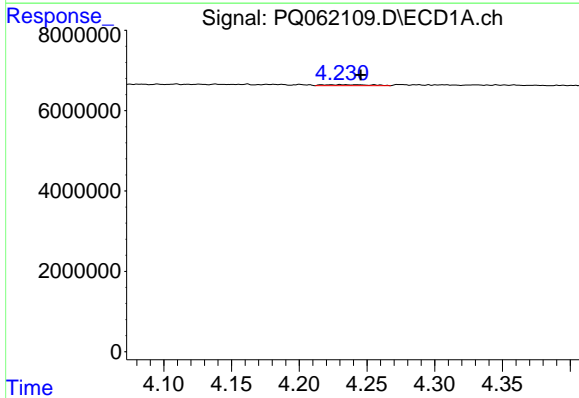
R.T.: 3.763 min  
 Delta R.T.: 0.010 min  
 Response: 1935687  
 Conc: 18.33 ng/ml

Instrument :  
 ECD\_Q  
 ClientSampleId :



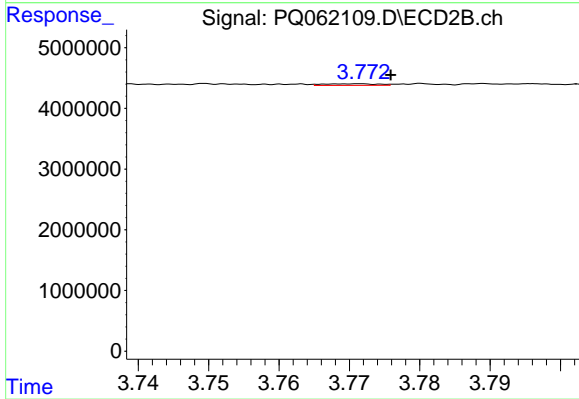
#11 AR-1232-1

R.T.: 3.106 min  
 Delta R.T.: 0.001 min  
 Response: 75548  
 Conc: 1.32 ng/ml



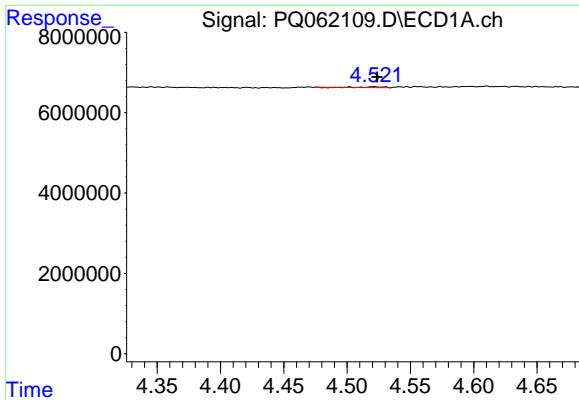
#12 AR-1232-2

R.T.: 4.230 min  
 Delta R.T.: -0.015 min  
 Response: 600662  
 Conc: 10.15 ng/ml



#12 AR-1232-2

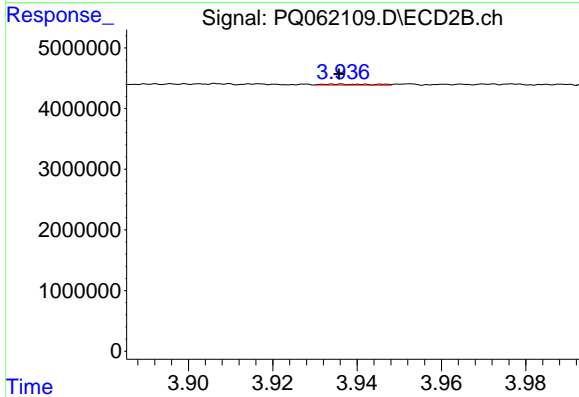
R.T.: 3.772 min  
 Delta R.T.: -0.004 min  
 Response: 143265  
 Conc: 2.15 ng/ml



#13 AR-1232-3

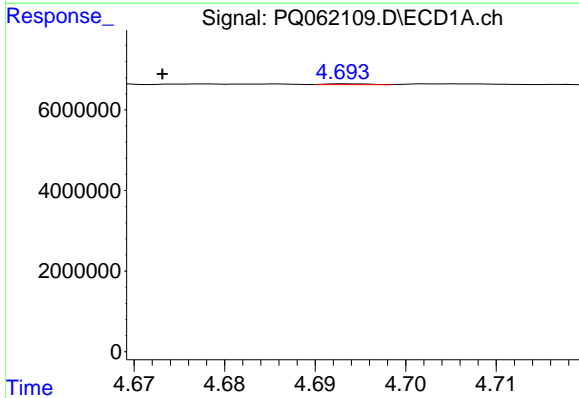
R.T.: 4.502 min  
 Delta R.T.: -0.022 min  
 Response: 172917  
 Conc: 1.53 ng/ml

Instrument :  
 ECD\_Q  
 ClientSampleId :



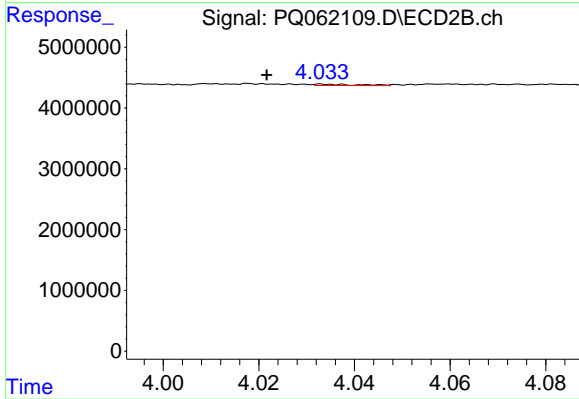
#13 AR-1232-3

R.T.: 3.936 min  
 Delta R.T.: 0.000 min  
 Response: 129363  
 Conc: 3.74 ng/ml



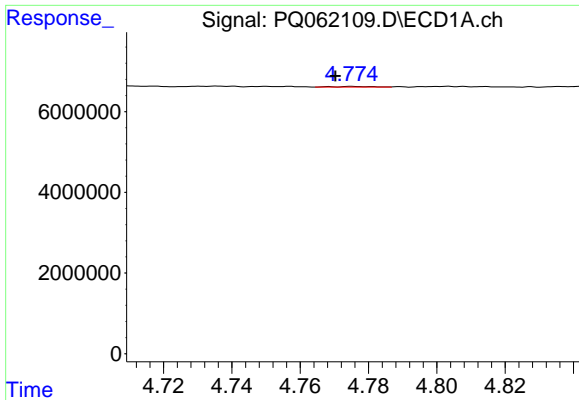
#14 AR-1232-4

R.T.: 4.694 min  
 Delta R.T.: 0.021 min  
 Response: 59652  
 Conc: 1.05 ng/ml



#14 AR-1232-4

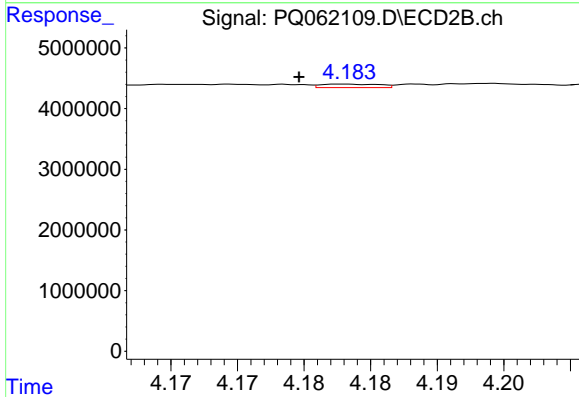
R.T.: 4.033 min  
 Delta R.T.: 0.012 min  
 Response: 142021  
 Conc: 4.78 ng/ml



#15 AR-1232-5

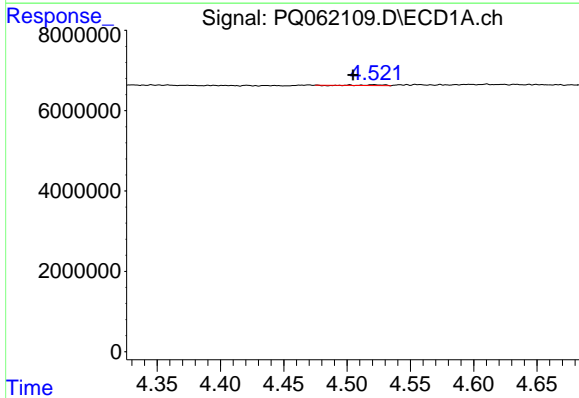
R.T.: 4.775 min  
 Delta R.T.: 0.005 min  
 Response: 116637  
 Conc: 2.91 ng/ml

Instrument :  
 ECD\_Q  
 ClientSampleId :



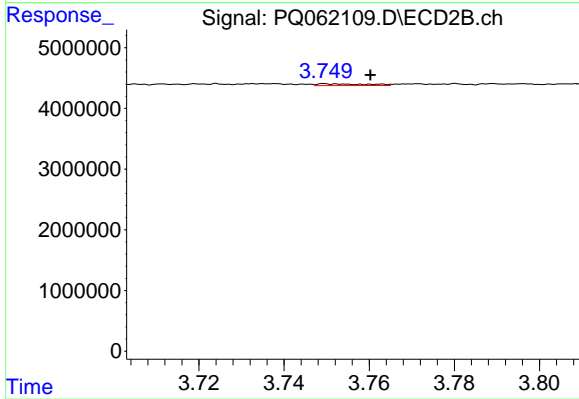
#15 AR-1232-5

R.T.: 4.183 min  
 Delta R.T.: 0.004 min  
 Response: 175400  
 Conc: 4.92 ng/ml



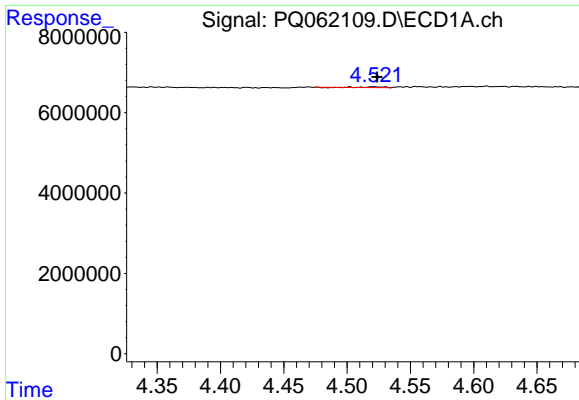
#16 AR-1242-1

R.T.: 4.502 min  
 Delta R.T.: -0.003 min  
 Response: 172917  
 Conc: 1.32 ng/ml



#16 AR-1242-1

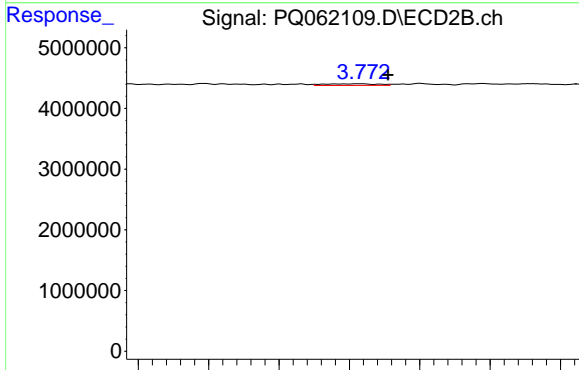
R.T.: 3.750 min  
 Delta R.T.: -0.011 min  
 Response: 229575  
 Conc: 2.97 ng/ml



#17 AR-1242-2

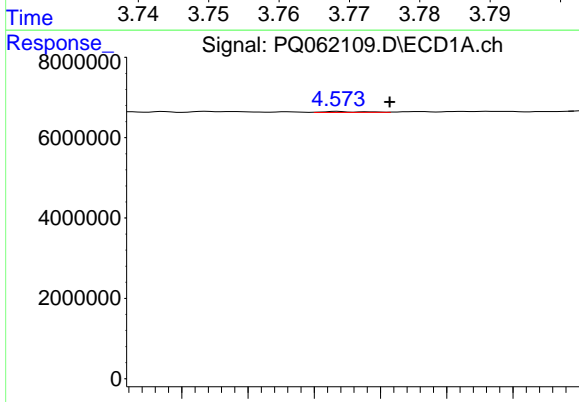
R.T.: 4.502 min  
 Delta R.T.: -0.022 min  
 Response: 172917  
 Conc: 0.89 ng/ml

Instrument :  
 ECD\_Q  
 ClientSampleId :



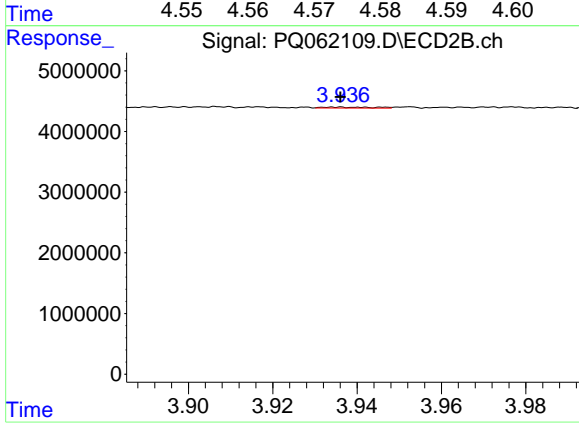
#17 AR-1242-2

R.T.: 3.772 min  
 Delta R.T.: -0.004 min  
 Response: 143265  
 Conc: 1.29 ng/ml



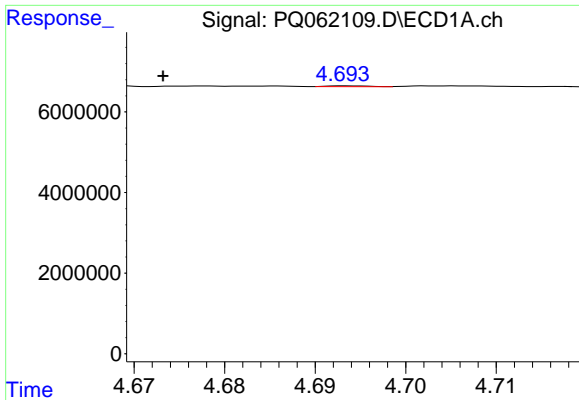
#18 AR-1242-3

R.T.: 4.574 min  
 Delta R.T.: -0.008 min  
 Response: 97876  
 Conc: 0.81 ng/ml



#18 AR-1242-3

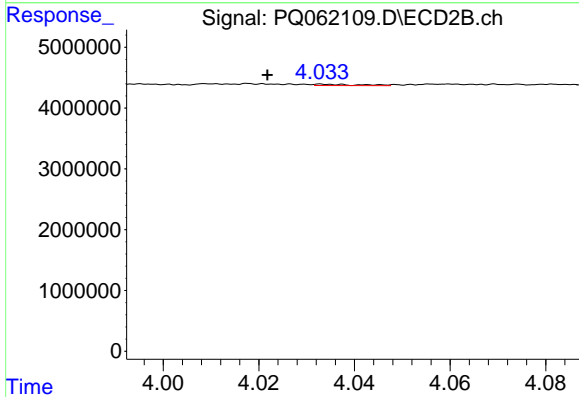
R.T.: 3.936 min  
 Delta R.T.: 0.000 min  
 Response: 129363  
 Conc: 2.21 ng/ml



#19 AR-1242-4

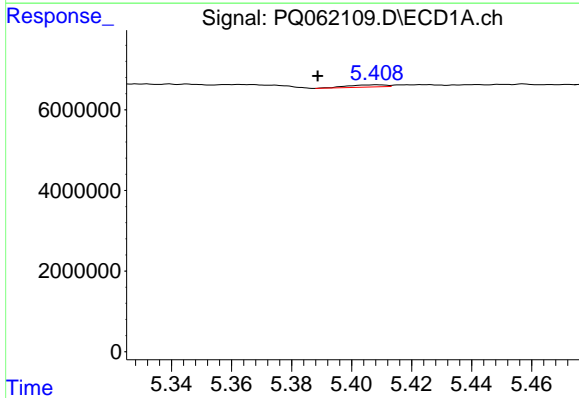
R.T.: 4.694 min  
 Delta R.T.: 0.021 min  
 Response: 59652  
 Conc: 0.61 ng/ml

Instrument :  
 ECD\_Q  
 ClientSampleId :



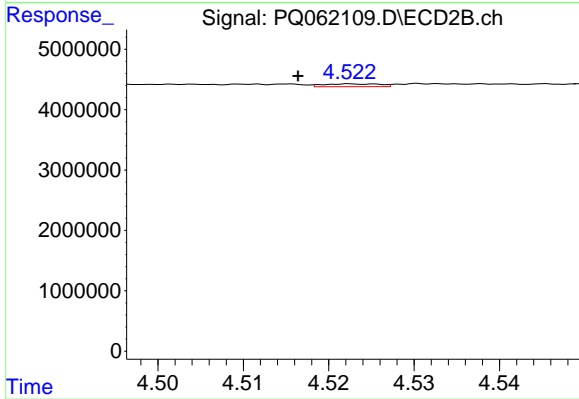
#19 AR-1242-4

R.T.: 4.033 min  
 Delta R.T.: 0.011 min  
 Response: 142021  
 Conc: 2.42 ng/ml



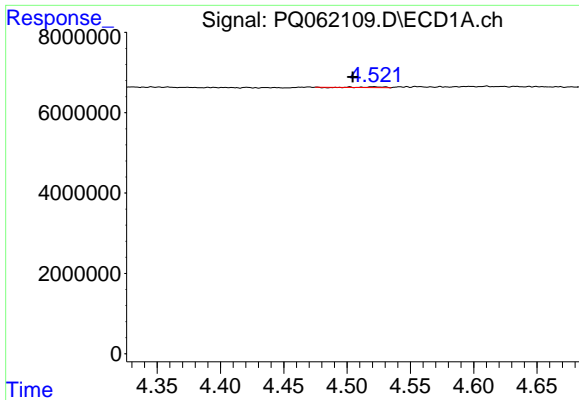
#20 AR-1242-5

R.T.: 5.408 min  
 Delta R.T.: 0.020 min  
 Response: 484560  
 Conc: 5.06 ng/ml



#20 AR-1242-5

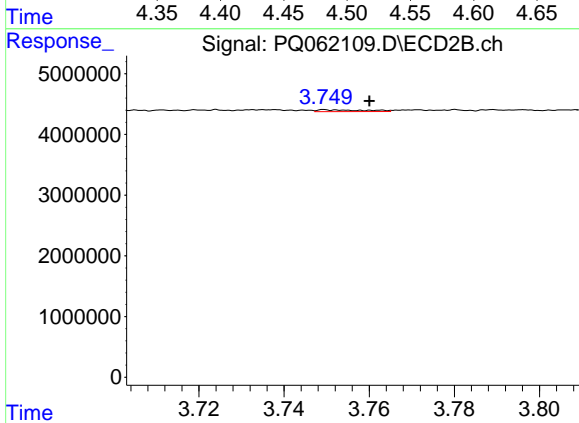
R.T.: 4.523 min  
 Delta R.T.: 0.006 min  
 Response: 213416  
 Conc: 2.57 ng/ml



#21 AR-1248-1

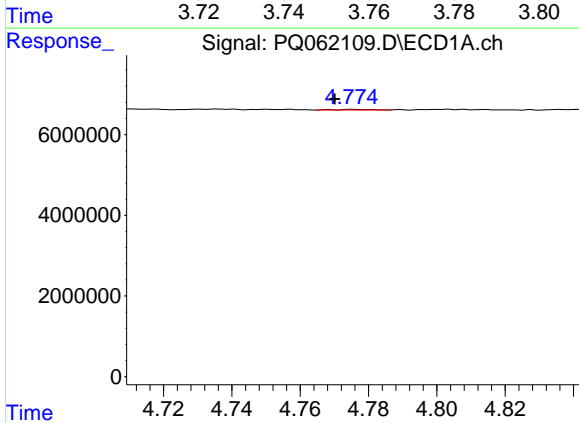
R.T.: 4.502 min  
 Delta R.T.: -0.003 min  
 Response: 172917  
 Conc: 1.66 ng/ml

Instrument :  
 ECD\_Q  
 ClientSampleId :



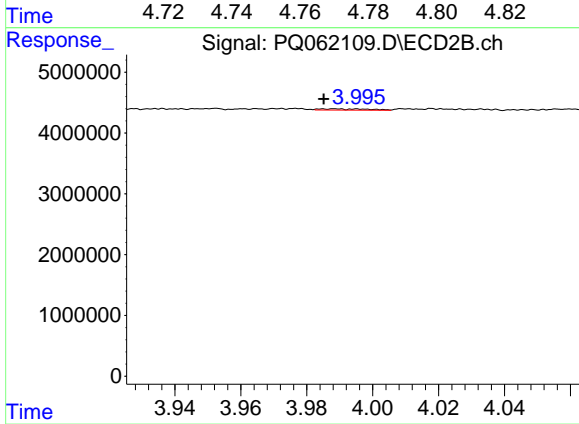
#21 AR-1248-1

R.T.: 3.750 min  
 Delta R.T.: -0.010 min  
 Response: 229575  
 Conc: 3.67 ng/ml



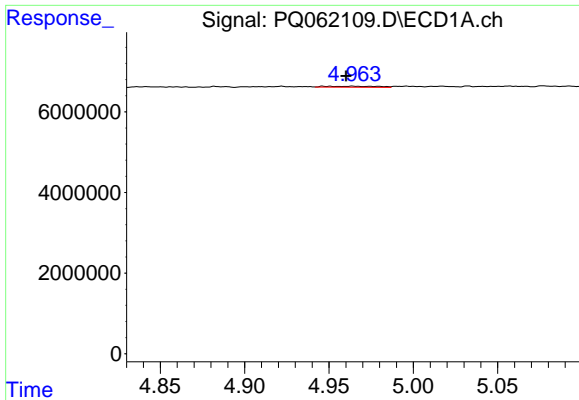
#22 AR-1248-2

R.T.: 4.775 min  
 Delta R.T.: 0.005 min  
 Response: 116637  
 Conc: 0.81 ng/ml



#22 AR-1248-2

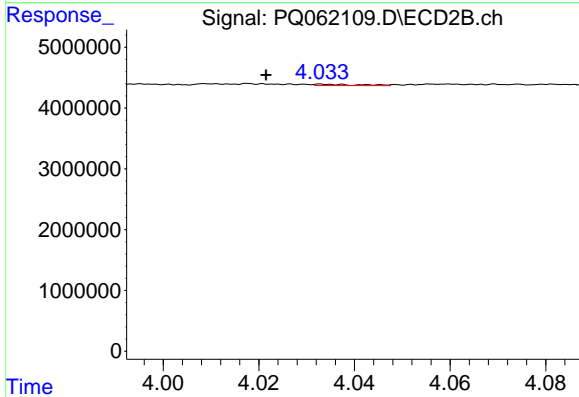
R.T.: 3.989 min  
 Delta R.T.: 0.003 min  
 Response: 216150  
 Conc: 2.31 ng/ml



#23 AR-1248-3

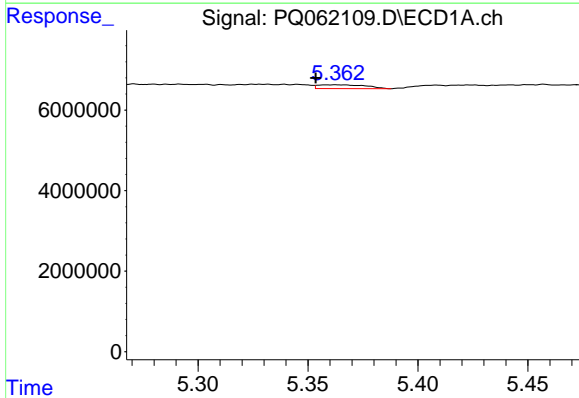
R.T.: 4.964 min  
 Delta R.T.: 0.004 min  
 Response: 537367  
 Conc: 3.09 ng/ml

Instrument :  
 ECD\_Q  
 ClientSampleId :



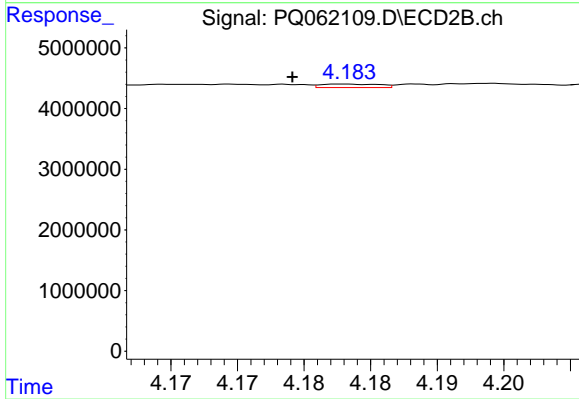
#23 AR-1248-3

R.T.: 4.033 min  
 Delta R.T.: 0.012 min  
 Response: 142021  
 Conc: 1.57 ng/ml



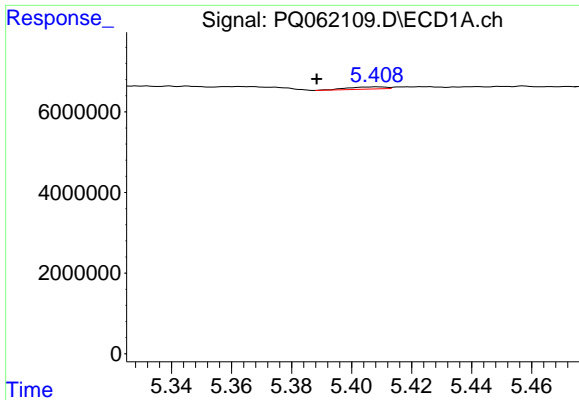
#24 AR-1248-4

R.T.: 5.363 min  
 Delta R.T.: 0.009 min  
 Response: 1411909  
 Conc: 7.36 ng/ml



#24 AR-1248-4

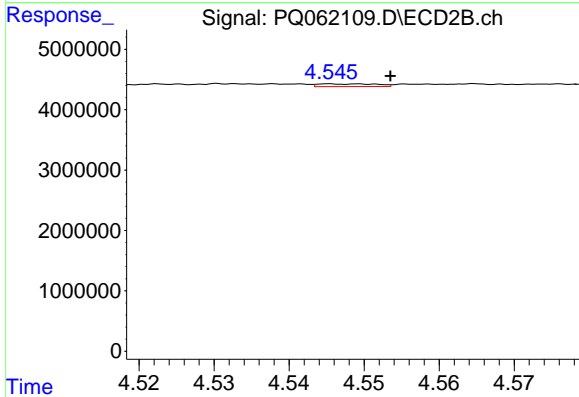
R.T.: 4.183 min  
 Delta R.T.: 0.004 min  
 Response: 175400  
 Conc: 1.55 ng/ml



#25 AR-1248-5

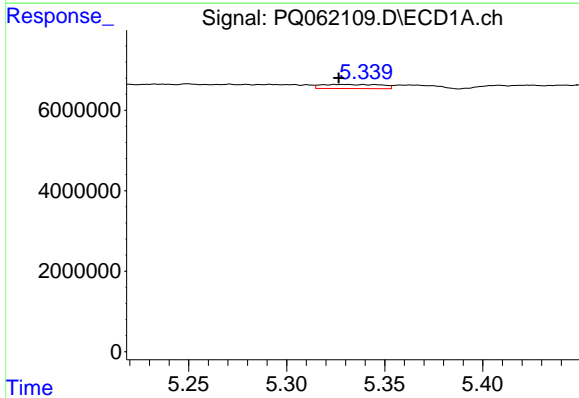
R.T.: 5.408 min  
 Delta R.T.: 0.020 min  
 Response: 484560  
 Conc: 2.68 ng/ml

Instrument :  
 ECD\_Q  
 ClientSampleId :



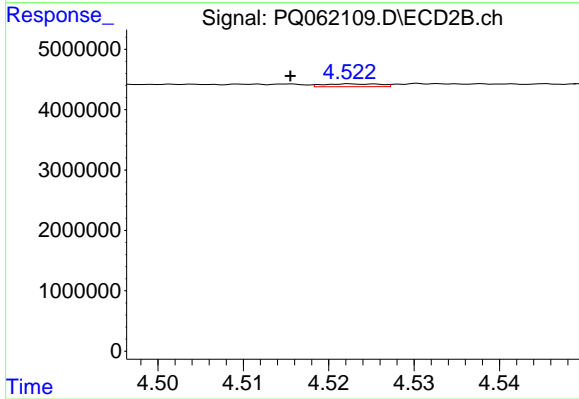
#25 AR-1248-5

R.T.: 4.546 min  
 Delta R.T.: -0.008 min  
 Response: 239722  
 Conc: 2.14 ng/ml



#26 AR-1254-1

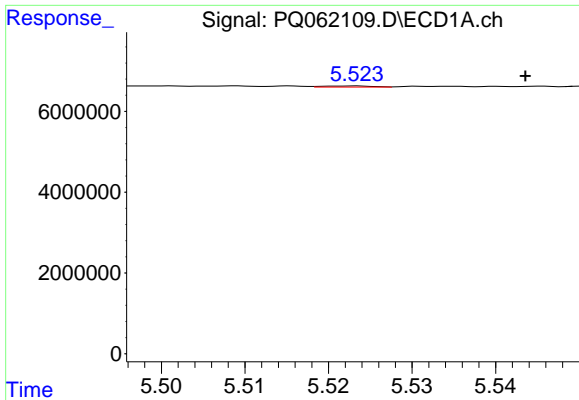
R.T.: 5.330 min  
 Delta R.T.: 0.004 min  
 Response: 2164829  
 Conc: 11.65 ng/ml



#26 AR-1254-1

R.T.: 4.523 min  
 Delta R.T.: 0.007 min  
 Response: 213416  
 Conc: 1.32 ng/ml

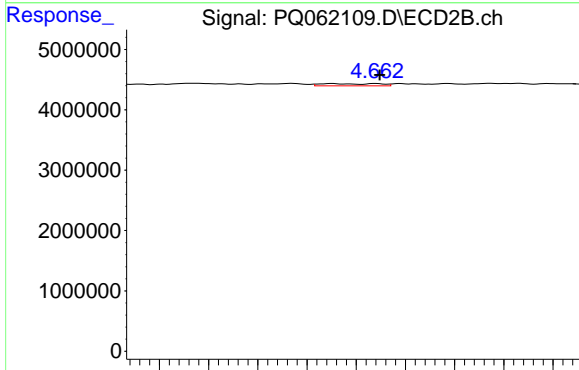




#27 AR-1254-2

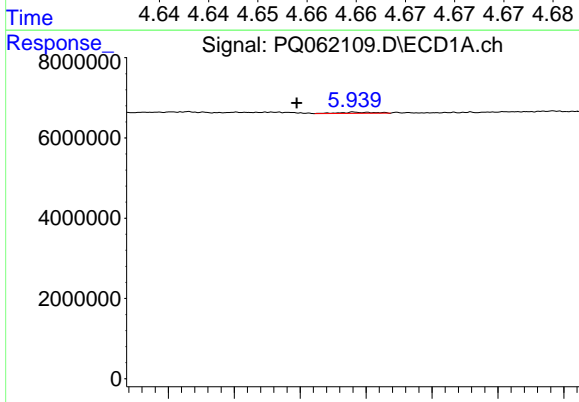
R.T.: 5.523 min  
 Delta R.T.: -0.021 min  
 Response: 111251  
 Conc: 0.38 ng/ml

Instrument :  
 ECD\_Q  
 ClientSampleId :



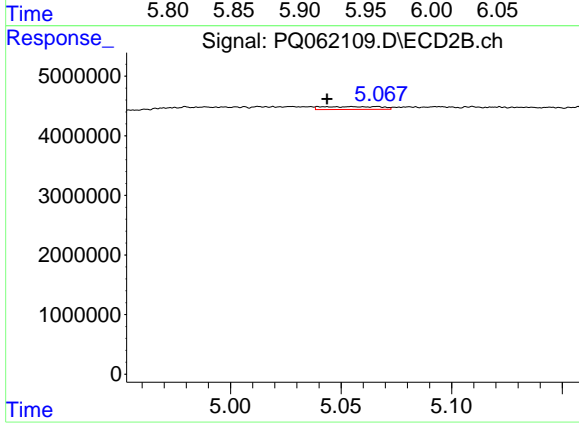
#27 AR-1254-2

R.T.: 4.658 min  
 Delta R.T.: -0.005 min  
 Response: 143650  
 Conc: 0.98 ng/ml



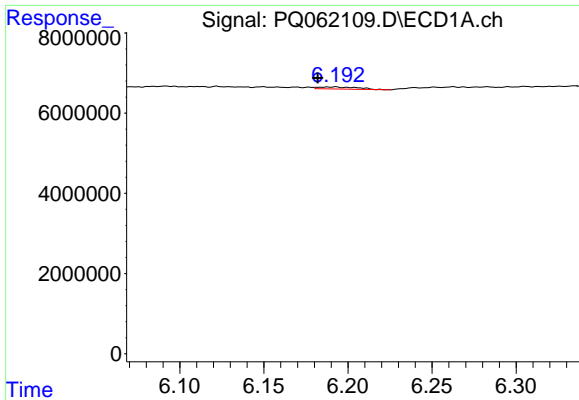
#28 AR-1254-3

R.T.: 5.940 min  
 Delta R.T.: 0.043 min  
 Response: 533189  
 Conc: 1.74 ng/ml



#28 AR-1254-3

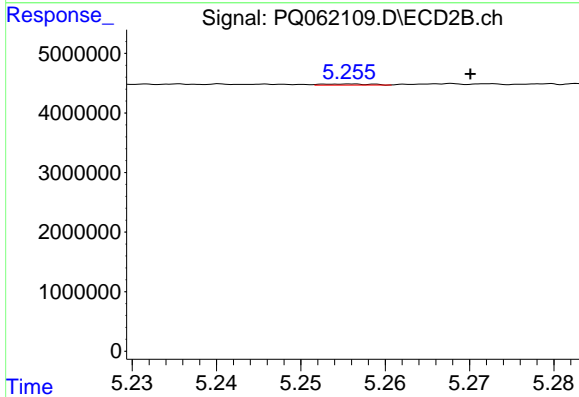
R.T.: 5.055 min  
 Delta R.T.: 0.011 min  
 Response: 886963  
 Conc: 3.80 ng/ml



#29 AR-1254-4

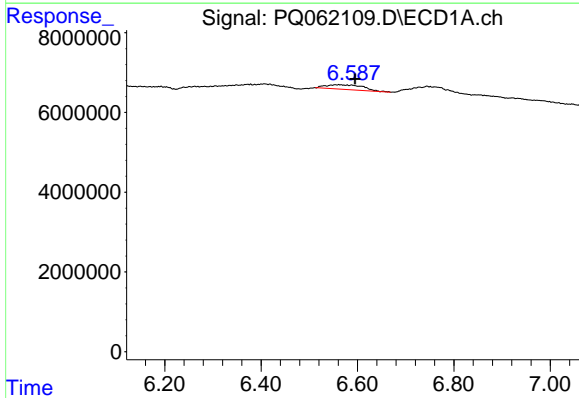
R.T.: 6.192 min  
 Delta R.T.: 0.010 min  
 Response: 830445  
 Conc: 3.58 ng/ml

Instrument :  
 ECD\_Q  
 ClientSampleId :



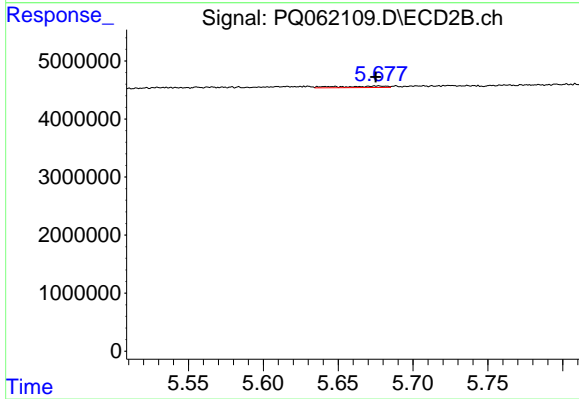
#29 AR-1254-4

R.T.: 5.255 min  
 Delta R.T.: -0.015 min  
 Response: 75406  
 Conc: 0.49 ng/ml



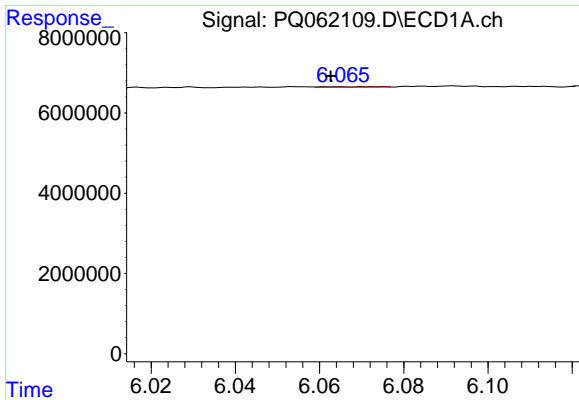
#30 AR-1254-5

R.T.: 6.562 min  
 Delta R.T.: -0.033 min  
 Response: 6122100  
 Conc: 23.83 ng/ml



#30 AR-1254-5

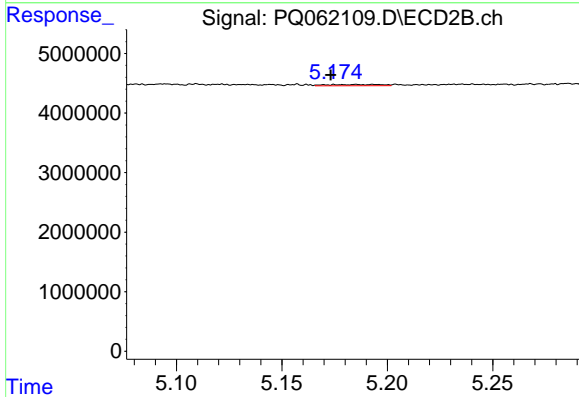
R.T.: 5.676 min  
 Delta R.T.: 0.001 min  
 Response: 546291  
 Conc: 2.37 ng/ml



#31 AR-1260-1

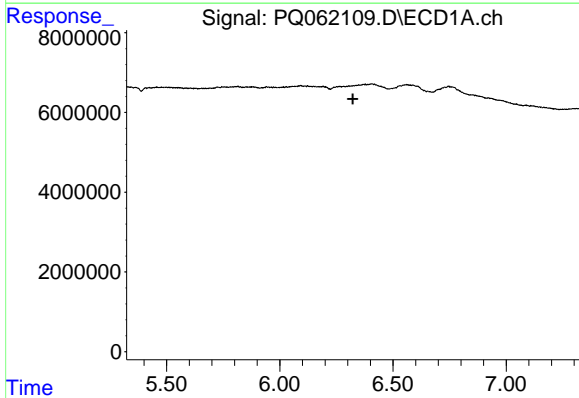
R.T.: 6.065 min  
 Delta R.T.: 0.002 min  
 Response: 112714  
 Conc: 0.48 ng/ml

Instrument : ECD\_Q  
 ClientSampleId :



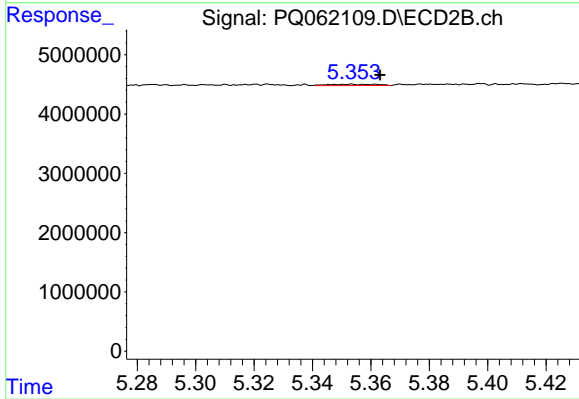
#31 AR-1260-1

R.T.: 5.185 min  
 Delta R.T.: 0.012 min  
 Response: 371480  
 Conc: 2.23 ng/ml



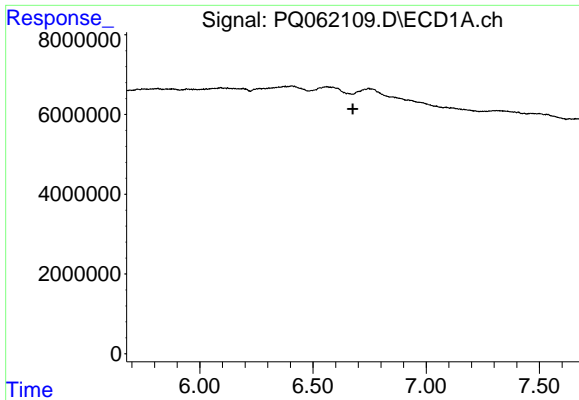
#32 AR-1260-2

R.T.: 0.000 min  
 Exp R.T. : 6.323 min  
 Response: 0  
 Conc: N.D.



#32 AR-1260-2

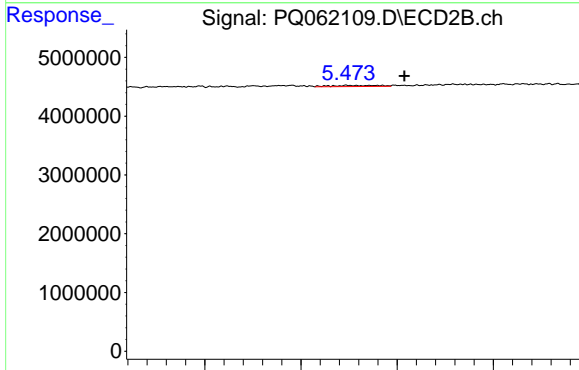
R.T.: 5.353 min  
 Delta R.T.: -0.010 min  
 Response: 256490  
 Conc: 1.23 ng/ml



#33 AR-1260-3

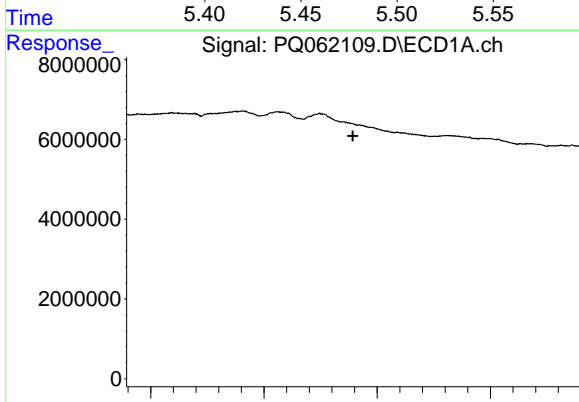
R.T.: 0.000 min  
 Exp R.T.: 6.676 min  
 Response: 0  
 Conc: N.D.

Instrument :  
 ECD\_Q  
 ClientSampleId :



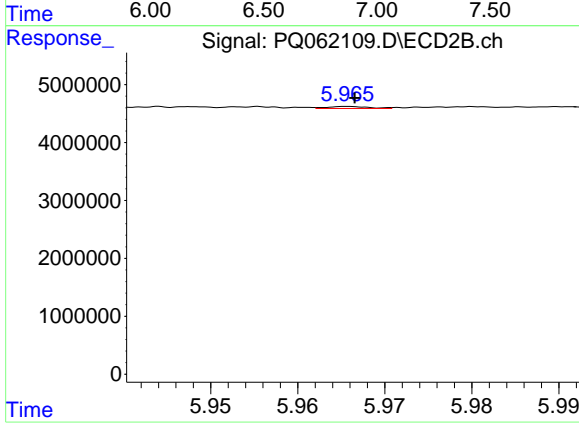
#33 AR-1260-3

R.T.: 5.474 min  
 Delta R.T.: -0.030 min  
 Response: 335188  
 Conc: 1.72 ng/ml



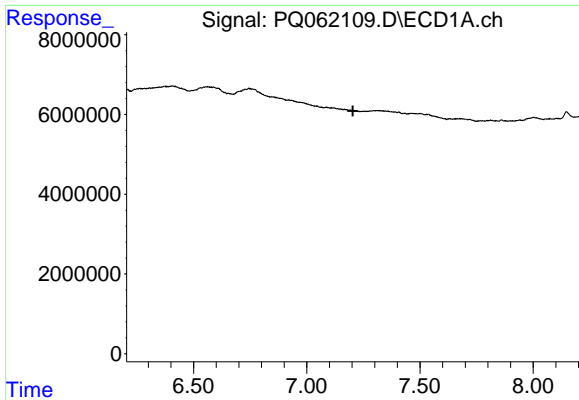
#34 AR-1260-4

R.T.: 0.000 min  
 Exp R.T.: 6.893 min  
 Response: 0  
 Conc: N.D.



#34 AR-1260-4

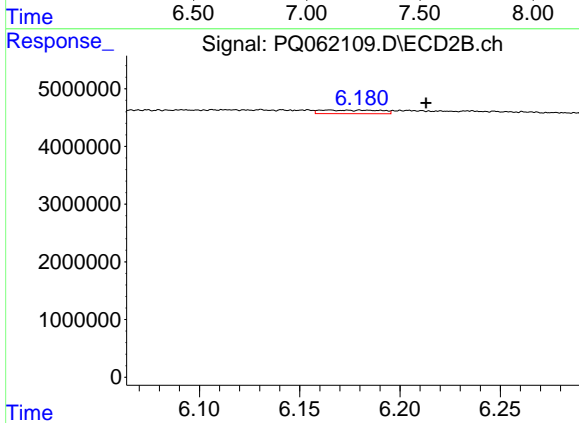
R.T.: 5.966 min  
 Delta R.T.: 0.000 min  
 Response: 115854  
 Conc: 0.79 ng/ml



#35 AR-1260-5

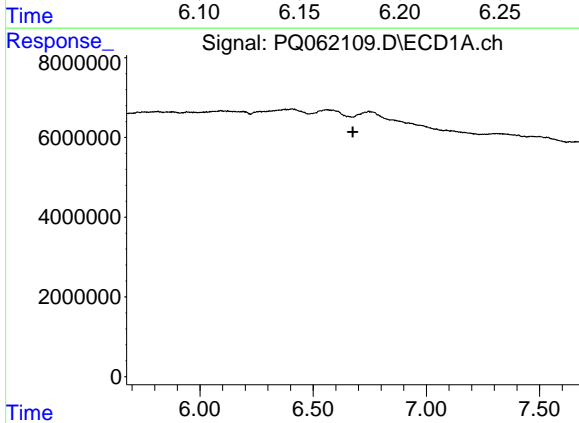
R.T.: 0.000 min  
 Exp R.T.: 7.204 min  
 Response: 0  
 Conc: N.D.

Instrument : ECD\_Q  
 ClientSampleId :



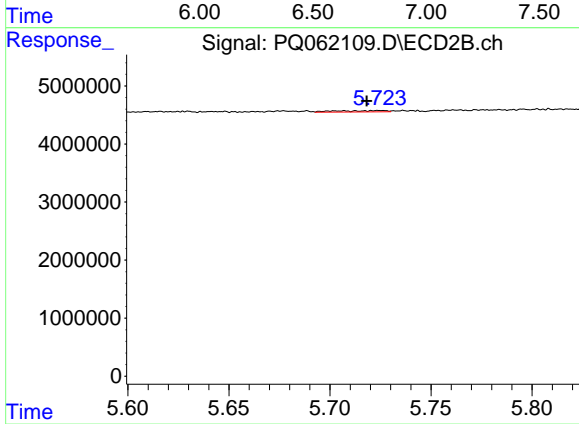
#35 AR-1260-5

R.T.: 6.165 min  
 Delta R.T.: -0.048 min  
 Response: 1280610  
 Conc: 3.86 ng/ml



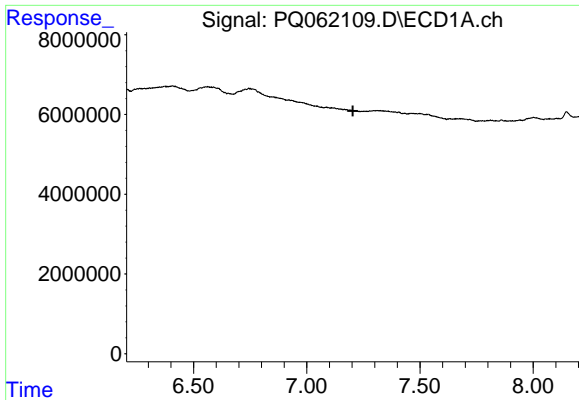
#36 AR-1262-1

R.T.: 0.000 min  
 Exp R.T.: 6.675 min  
 Response: 0  
 Conc: N.D.



#36 AR-1262-1

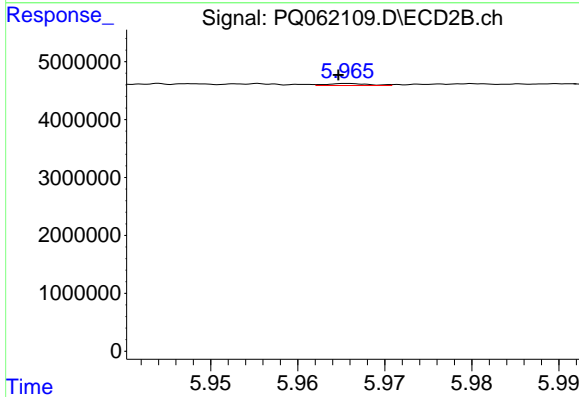
R.T.: 5.707 min  
 Delta R.T.: -0.011 min  
 Response: 406670  
 Conc: 1.75 ng/ml



#37 AR-1262-2

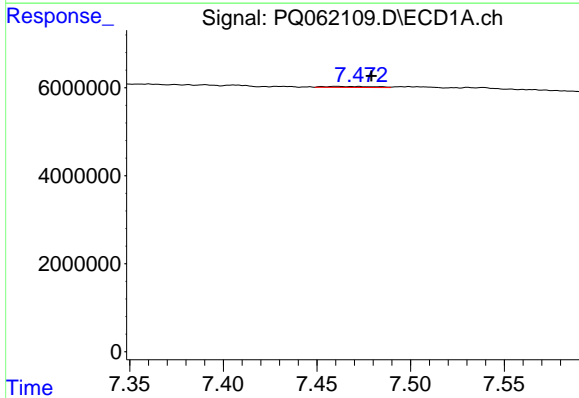
R.T.: 0.000 min  
 Exp R.T.: 7.204 min  
 Response: 0  
 Conc: N.D.

Instrument :  
 ECD\_Q  
 ClientSampleId :



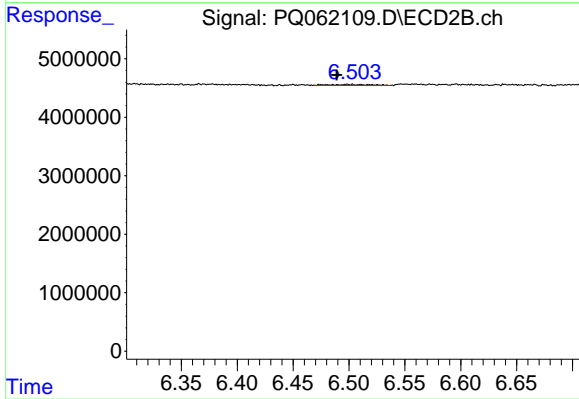
#37 AR-1262-2

R.T.: 5.966 min  
 Delta R.T.: 0.001 min  
 Response: 115854  
 Conc: 0.54 ng/ml



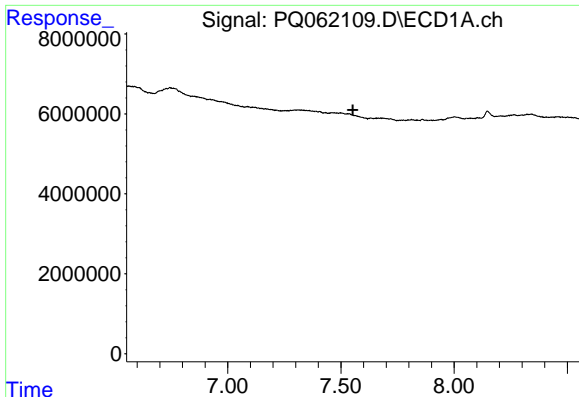
#38 AR-1262-3

R.T.: 7.461 min  
 Delta R.T.: -0.018 min  
 Response: 393308  
 Conc: 1.12 ng/ml



#38 AR-1262-3

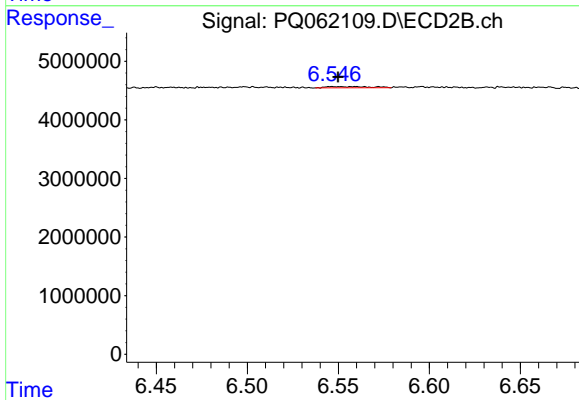
R.T.: 6.498 min  
 Delta R.T.: 0.009 min  
 Response: 407998  
 Conc: 2.34 ng/ml



#39 AR-1262-4

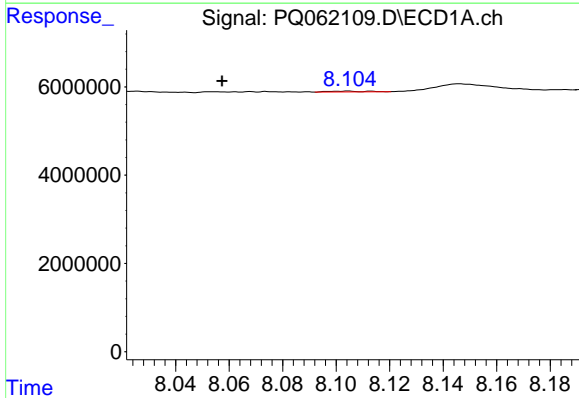
R.T.: 0.000 min  
 Exp R.T.: 7.553 min  
 Response: 0  
 Conc: N.D.

Instrument :  
 ECD\_Q  
 ClientSampleId :



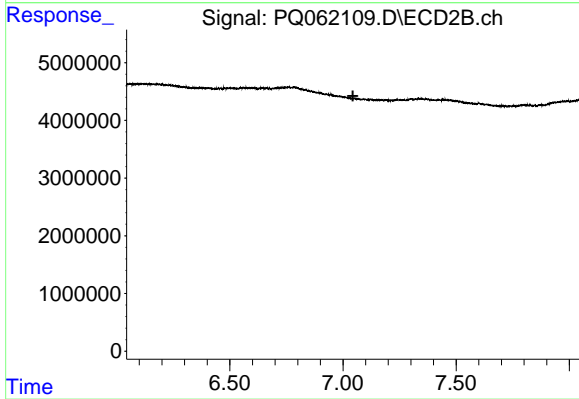
#39 AR-1262-4

R.T.: 6.547 min  
 Delta R.T.: -0.003 min  
 Response: 364239  
 Conc: 1.13 ng/ml



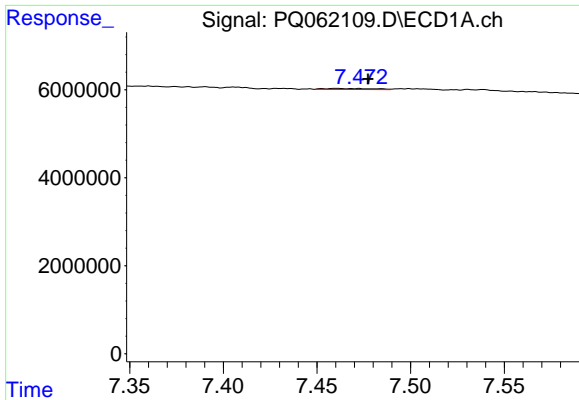
#40 AR-1262-5

R.T.: 8.103 min  
 Delta R.T.: 0.046 min  
 Response: 172865  
 Conc: 0.97 ng/ml



#40 AR-1262-5

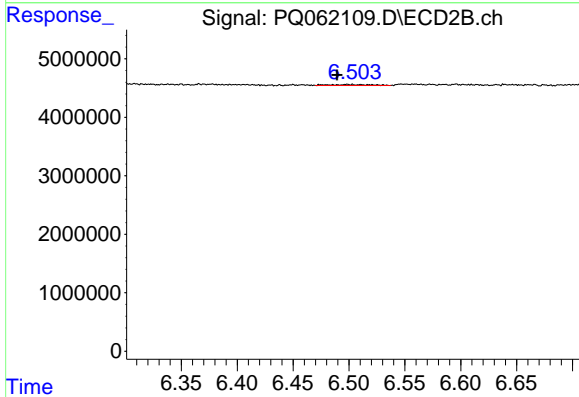
R.T.: 0.000 min  
 Exp R.T.: 7.044 min  
 Response: 0  
 Conc: N.D.



#41 AR-1268-1

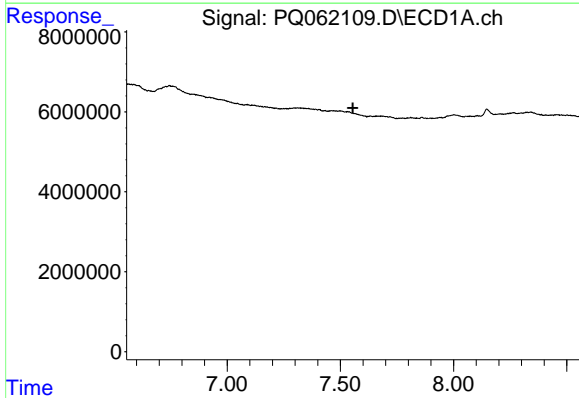
R.T.: 7.461 min  
 Delta R.T.: -0.016 min  
 Response: 393308  
 Conc: 0.69 ng/ml

Instrument :  
 ECD\_Q  
 ClientSampleId :



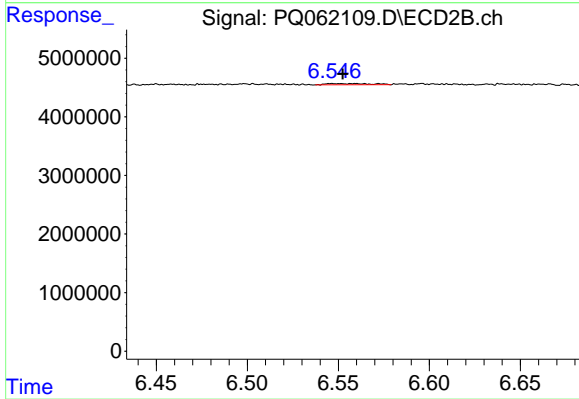
#41 AR-1268-1

R.T.: 6.498 min  
 Delta R.T.: 0.009 min  
 Response: 407998  
 Conc: 0.87 ng/ml



#42 AR-1268-2

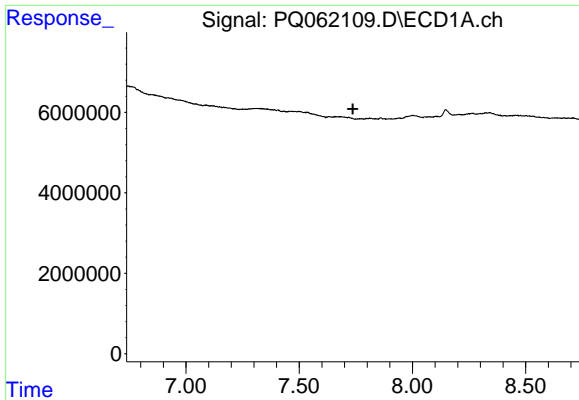
R.T.: 0.000 min  
 Exp R.T. : 7.556 min  
 Response: 0  
 Conc: N.D.



#42 AR-1268-2

R.T.: 6.547 min  
 Delta R.T.: -0.005 min  
 Response: 364239  
 Conc: 0.86 ng/ml

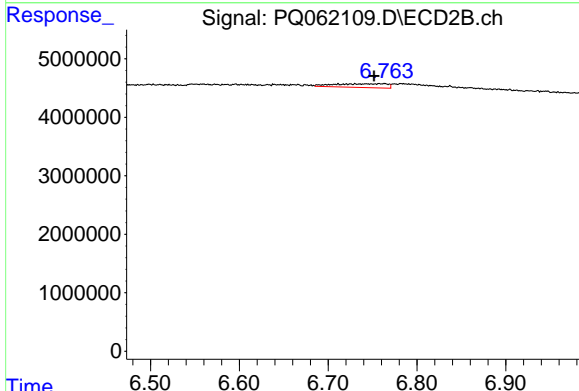




#43 AR-1268-3

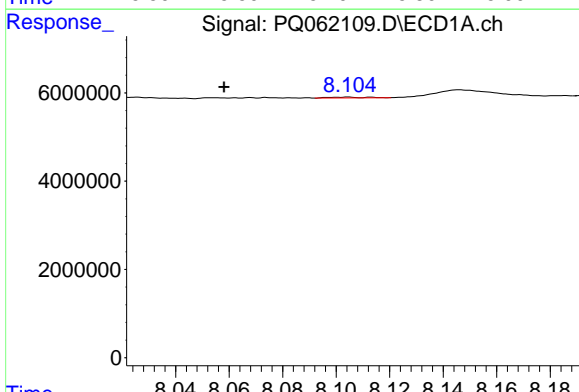
R.T.: 0.000 min  
 Exp R.T.: 7.737 min  
 Response: 0  
 Conc: N.D.

Instrument :  
 ECD\_Q  
 ClientSampleId :



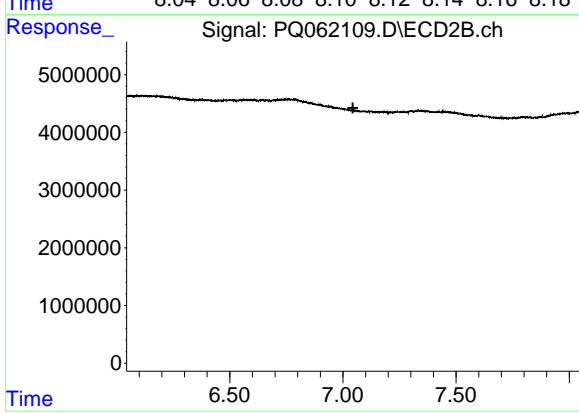
#43 AR-1268-3

R.T.: 6.763 min  
 Delta R.T.: 0.012 min  
 Response: 2565842  
 Conc: 6.97 ng/ml



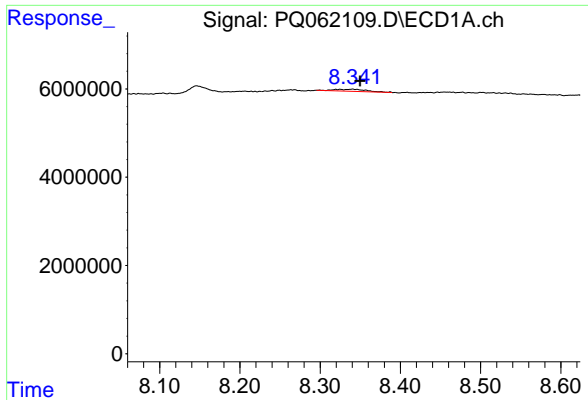
#44 AR-1268-4

R.T.: 8.103 min  
 Delta R.T.: 0.045 min  
 Response: 172865  
 Conc: 0.94 ng/ml



#44 AR-1268-4

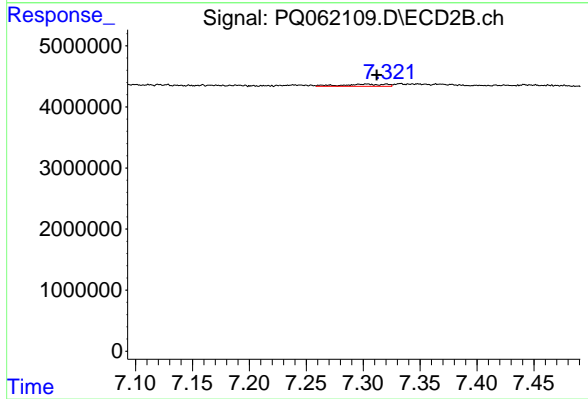
R.T.: 0.000 min  
 Exp R.T.: 7.044 min  
 Response: 0  
 Conc: N.D.



#45 AR-1268-5

R.T.: 8.341 min  
Delta R.T.: -0.009 min  
Response: 1283423  
Conc: 1.02 ng/ml

Instrument :  
ECD\_Q  
ClientSampleId :



#45 AR-1268-5

R.T.: 7.302 min  
Delta R.T.: -0.009 min  
Response: 927680  
Conc: 0.79 ng/ml