

Data Path : Z:\pestpcbsrv\HPCHEM1\ECD\_Q\Data\PQ071223\  
 Data File : PQ062140.D  
 Signal(s) : Signal #1: ECD1A.ch Signal #2: ECD2B.ch  
 Acq On : 12 Jul 2023 19:04  
 Operator : YP\AJ  
 Sample : 03567-25  
 Misc :  
 ALS Vial : 30 Sample Multiplier: 1

Instrument :  
 ECD\_Q  
 ClientSampleId :

Integration File signal 1: autoint1.e  
 Integration File signal 2: autoint2.e  
 Quant Time: Jul 12 21:02:24 2023  
 Quant Method : Z:\pestpcbsrv\HPCHEM1\ECD\_Q\Method\PQ070123.M  
 Quant Title : GC EXTRACTABLES  
 QLast Update : Tue Jul 04 05:32:27 2023  
 Response via : Initial Calibration  
 Integrator: ChemStation

Volume Inj. : 2 µl  
 Signal #1 Phase : ZB-MR1 Signal #2 Phase: ZB-MR2  
 Signal #1 Info : 30Mx0.32mmx 0.50µ Signal #2 Info : 30M x 0.32mm x 0.25µm

Compound	RT#1	RT#2	Resp#1	Resp#2	ng/ml	ng/ml
-----						
System Monitoring Compounds						
1) SA Tetrachlo...	3.404	2.759	88162238	52675742	18.073	20.994
2) SA Decachlor...	8.585	7.528	96639734	86723456	26.602	26.026
Target Compounds						
5) L1 AR-1016-3	4.584	3.935	780041	271148	5.118	3.594 #
6) L1 AR-1016-4	4.670	3.986	913185	2790003	7.285	42.479 #
7) L1 AR-1016-5	4.960	4.179	3648386	4320444	29.974	52.700 #
8) L2 AR-1221-1	3.586	2.956	1631218	899711	27.138	27.267
9) L2 AR-1221-2	3.682	3.045	1333854	247195	29.686	9.732 #
10) L2 AR-1221-3	3.748	3.107	1140048	1317680	8.113	17.093 #
11) L3 AR-1232-1	3.748	3.107	1140048	1317680	10.796	22.997 #
12) L3 AR-1232-2	4.251	3.775	1707167	1421241	28.861	21.354 #
14) L3 AR-1232-4	4.670	4.020	913185	2607723	16.115	87.685 #
15) L3 AR-1232-5	4.770	4.179	4556959	4320444	113.782	121.154
18) L4 AR-1242-3	4.584	3.935	780041	271148	6.455	4.629 #
19) L4 AR-1242-4	4.670	4.020	913185	2607723	9.367	44.479 #
20) L4 AR-1242-5	5.390	4.515	8005944	16430557	83.630	198.215 #
22) L5 AR-1248-2	4.770	3.986	4556959	2790003	31.720	29.754
23) L5 AR-1248-3	4.960	4.020	3648386	2607723	21.002	28.801 #
24) L5 AR-1248-4	5.355	4.179	7120280	4320444	37.098	38.288
25) L5 AR-1248-5	5.390	4.552	8005944	6844649	44.202	61.095 #
26) L6 AR-1254-1	5.326	4.515	12619819	16430557	67.914	101.761 #
27) L6 AR-1254-2	5.543	4.662	26091747	16588814	89.751	112.677 #
28) L6 AR-1254-3	5.897	5.042	37379662	32471993	121.702	138.947
29) L6 AR-1254-4	6.182	5.270	34142277	23522074	147.043	154.330
30) L6 AR-1254-5	6.595	5.674	60398851	47259197	235.134	204.766
31) L7 AR-1260-1	6.062	5.172	36817711	22197055	156.052	133.273
32) L7 AR-1260-2	6.322	5.362	36375369	27541921	125.948	132.447
33) L7 AR-1260-3	6.676	5.500	58127033	20317115	329.189	104.427 #
34) L7 AR-1260-4	6.871	5.963	17289999	56784324	82.079	389.303 #
35) L7 AR-1260-5	7.204	6.211	42520237	35062782	103.554	105.592
36) L8 AR-1262-1	6.676	5.718	58127033	47124202	190.617	202.710
37) L8 AR-1262-2	7.204	5.963	42520237	56784324	80.727	262.638 #
38) L8 AR-1262-3	7.477	6.489	228.7E6	185.2E6	649.089	1062.472 #
39) L8 AR-1262-4	7.556	6.552	211.5E6	184.8E6	792.859	573.282 #
40) L8 AR-1262-5	8.059	7.044	59388036	54129638	334.564	348.965
41) L9 AR-1268-1	7.477	6.489	228.7E6	185.2E6	402.969	393.631
42) L9 AR-1268-2	7.556	6.552	211.5E6	184.8E6	414.753	436.074
43) L9 AR-1268-3	7.737	6.751	137.8E6	121.2E6	322.836	329.094
44) L9 AR-1268-4	8.059	7.044	59388036	54129638	324.551	338.445
45) L9 AR-1268-5	8.352	7.312	383.1E6	353.7E6	303.878	303.097

Data Path : Z:\pestpcbsrv\HPCHEM1\ECD\_Q\Data\PQ071223\  
Data File : PQ062140.D  
Signal(s) : Signal #1: ECD1A.ch Signal #2: ECD2B.ch  
Acq On : 12 Jul 2023 19:04  
Operator : YP\AJ  
Sample : 03567-25  
Misc :  
ALS Vial : 30 Sample Multiplier: 1

Instrument :  
ECD\_Q  
ClientSampleId :

Integration File signal 1: autoint1.e  
Integration File signal 2: autoint2.e  
Quant Time: Jul 12 21:02:24 2023  
Quant Method : Z:\pestpcbsrv\HPCHEM1\ECD\_Q\Method\PQ070123.M  
Quant Title : GC EXTRACTABLES  
QLast Update : Tue Jul 04 05:32:27 2023  
Response via : Initial Calibration  
Integrator: ChemStation

Volume Inj. : 2 µl  
Signal #1 Phase : ZB-MR1 Signal #2 Phase: ZB-MR2  
Signal #1 Info : 30Mx0.32mmx 0.50µ Signal #2 Info : 30M x 0.32mm x 0.25µm

Compound	RT#1	RT#2	Resp#1	Resp#2	ng/ml	ng/ml
----------	------	------	--------	--------	-------	-------

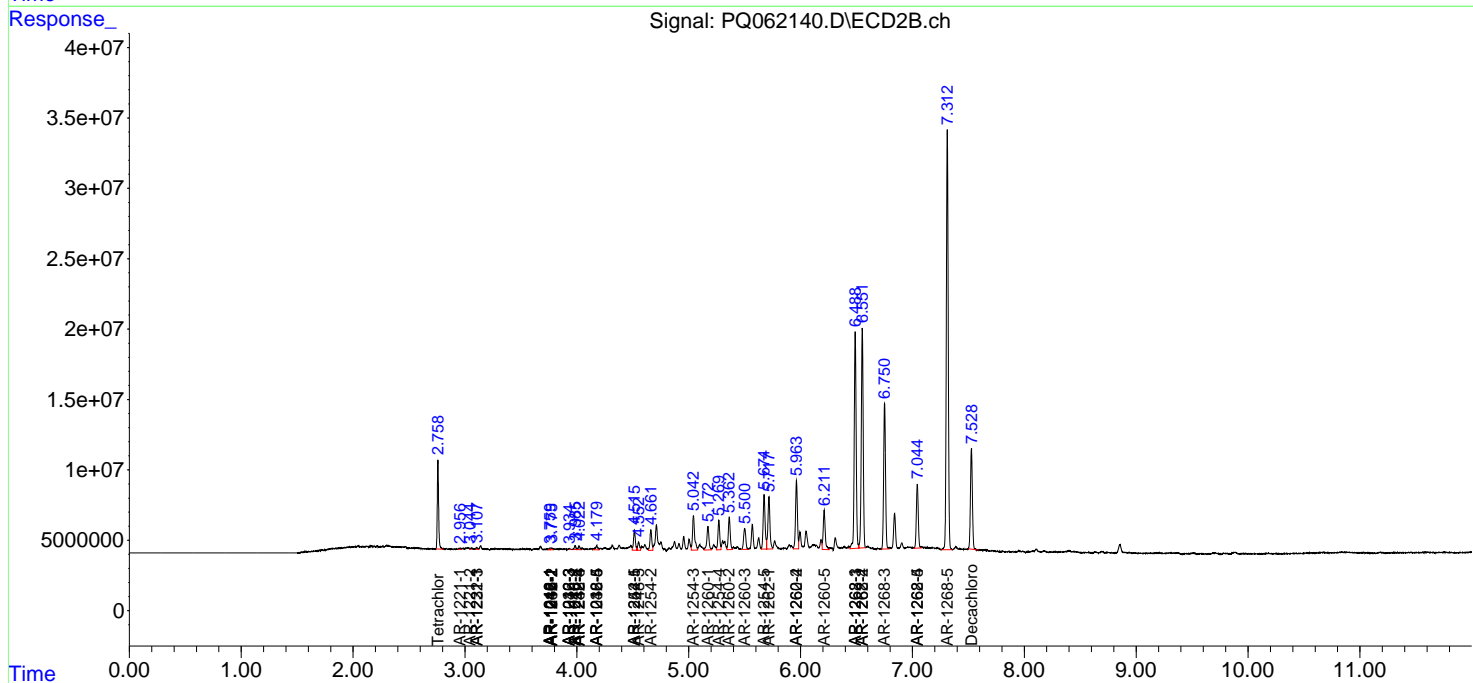
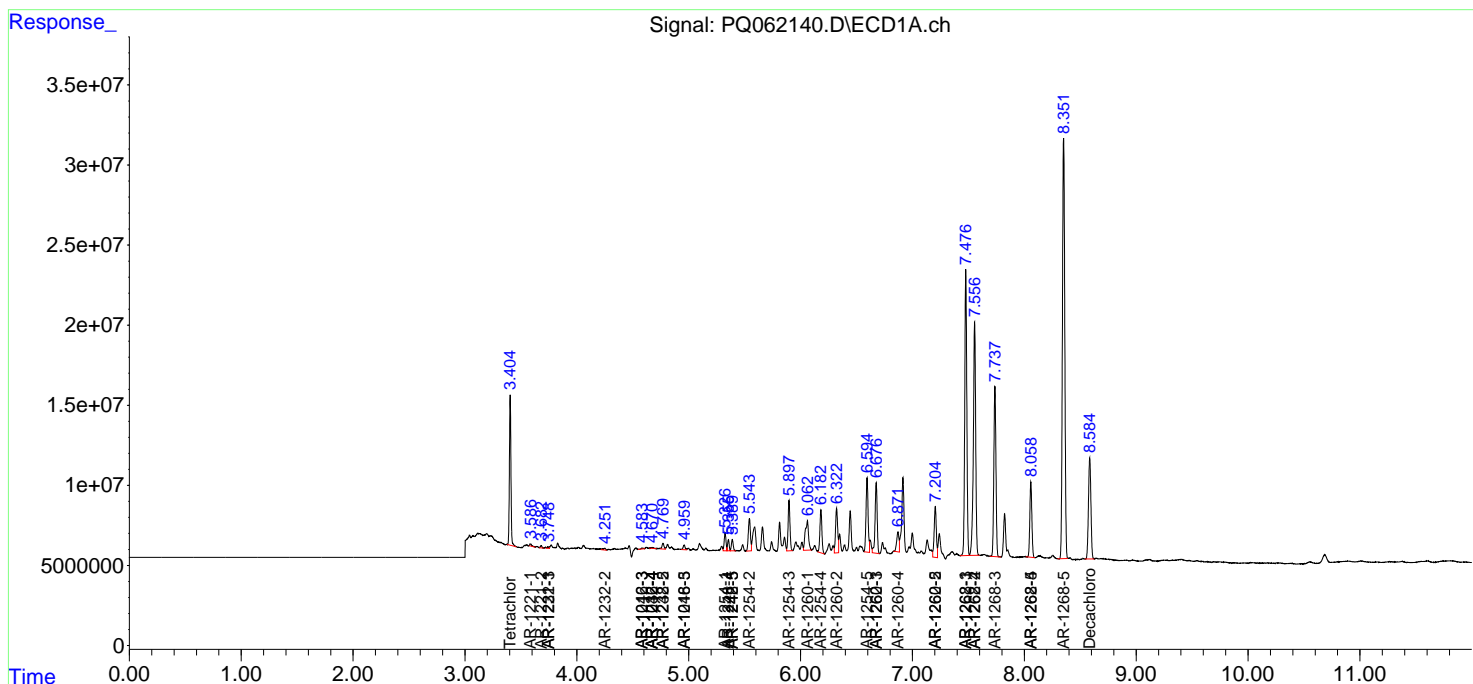
-----  
(f)=RT Delta > 1/2 Window (#)=Amounts differ by > 25% (m)=manual int.

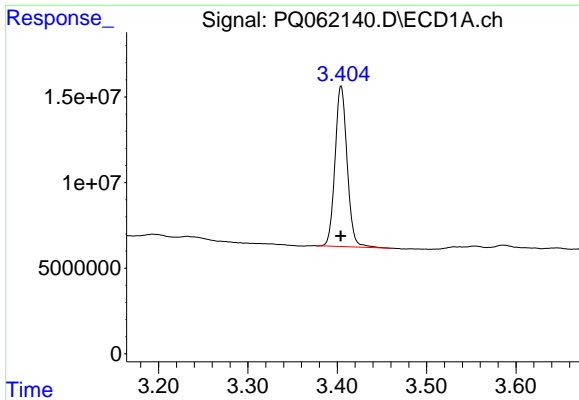
Data Path : Z:\pestpcbsrv\HPCHEM1\ECD\_Q\Data\PQ071223\  
 Data File : PQ062140.D  
 Signal(s) : Signal #1: ECD1A.ch Signal #2: ECD2B.ch  
 Acq On : 12 Jul 2023 19:04  
 Operator : YP\AJ  
 Sample : 03567-25  
 Misc :  
 ALS Vial : 30 Sample Multiplier: 1

Instrument :  
 ECD\_Q  
 ClientSampleId :

Integration File signal 1: autoint1.e  
 Integration File signal 2: autoint2.e  
 Quant Time: Jul 12 21:02:24 2023  
 Quant Method : Z:\pestpcbsrv\HPCHEM1\ECD\_Q\Method\PQ070123.M  
 Quant Title : GC EXTRACTABLES  
 QLast Update : Tue Jul 04 05:32:27 2023  
 Response via : Initial Calibration  
 Integrator: ChemStation

Volume Inj. : 2 µl  
 Signal #1 Phase : ZB-MR1 Signal #2 Phase: ZB-MR2  
 Signal #1 Info : 30Mx0.32mmx 0.50µ Signal #2 Info : 30M x 0.32mm x 0.25µm

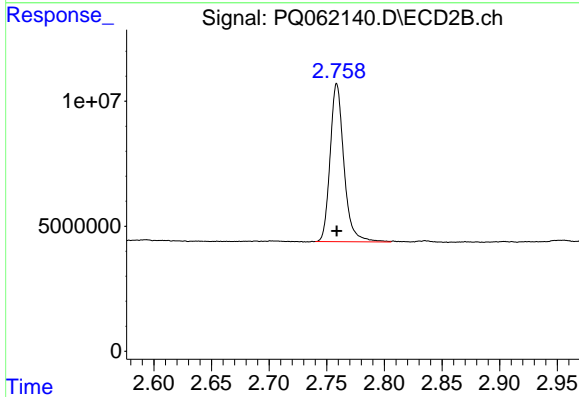




#1 Tetrachloro-m-xylene

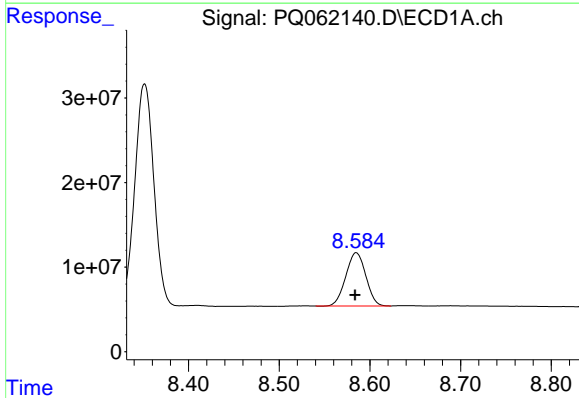
R.T.: 3.404 min  
 Delta R.T.: 0.000 min  
 Response: 88162238  
 Conc: 18.07 ng/ml

Instrument :  
 ECD\_Q  
 ClientSampleId :



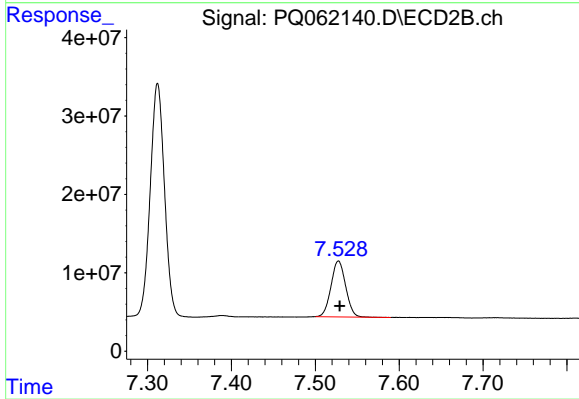
#1 Tetrachloro-m-xylene

R.T.: 2.759 min  
 Delta R.T.: 0.000 min  
 Response: 52675742  
 Conc: 20.99 ng/ml



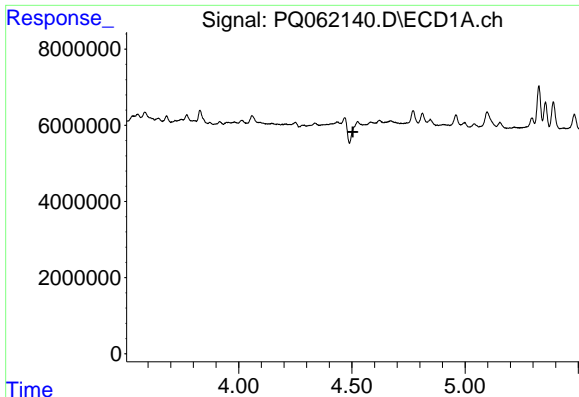
#2 Decachlorobiphenyl

R.T.: 8.585 min  
 Delta R.T.: 0.001 min  
 Response: 96639734  
 Conc: 26.60 ng/ml



#2 Decachlorobiphenyl

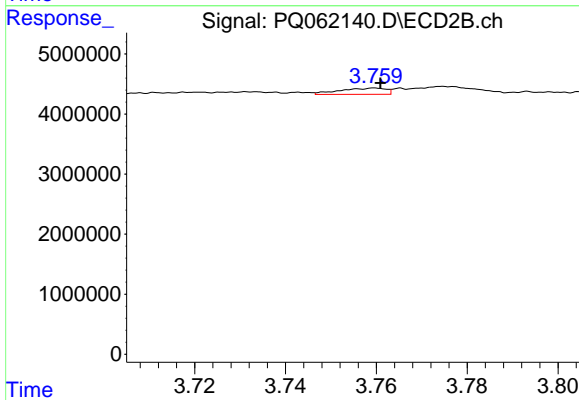
R.T.: 7.528 min  
 Delta R.T.: -0.002 min  
 Response: 86723456  
 Conc: 26.03 ng/ml



#3 AR-1016-1

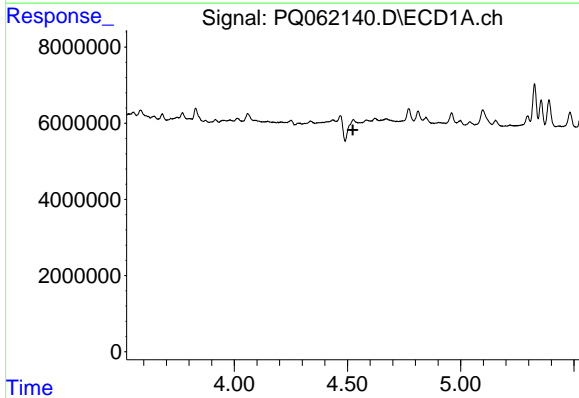
R.T.: 4.526 min  
 Delta R.T.: 0.021 min  
 Response: -4377375  
 Conc: N.D.

Instrument :  
 ECD\_Q  
 ClientSampleId :



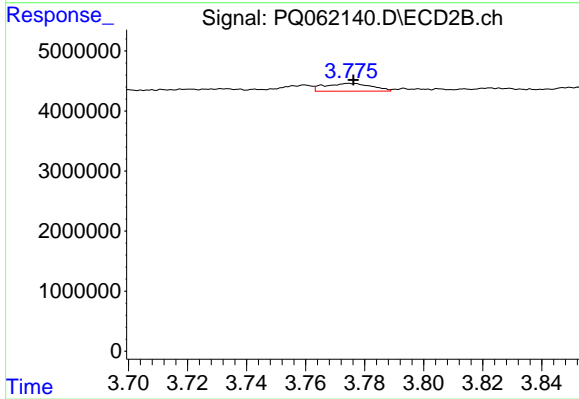
#3 AR-1016-1

R.T.: 3.760 min  
 Delta R.T.: -0.001 min  
 Response: 727556  
 Conc: 7.35 ng/ml



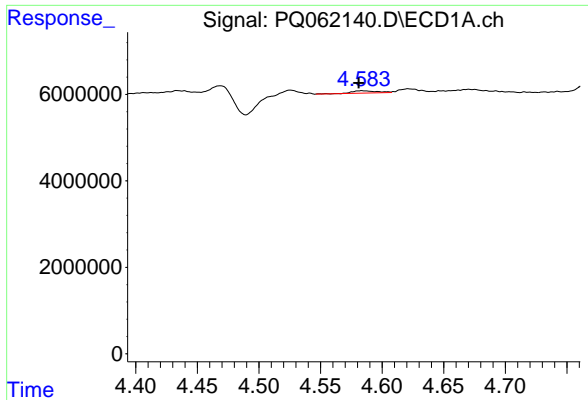
#4 AR-1016-2

R.T.: 4.526 min  
 Delta R.T.: 0.002 min  
 Response: -4377375  
 Conc: N.D.



#4 AR-1016-2

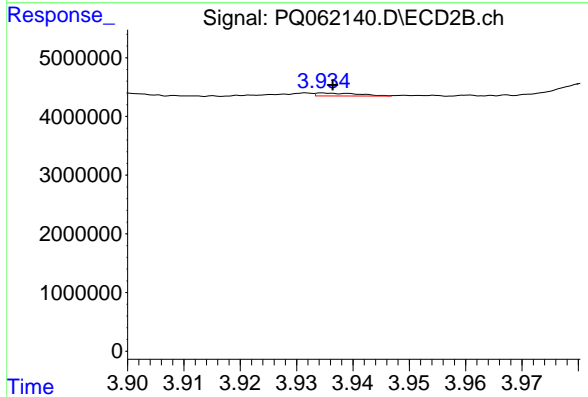
R.T.: 3.775 min  
 Delta R.T.: -0.001 min  
 Response: 1421241  
 Conc: 9.86 ng/ml



#5 AR-1016-3

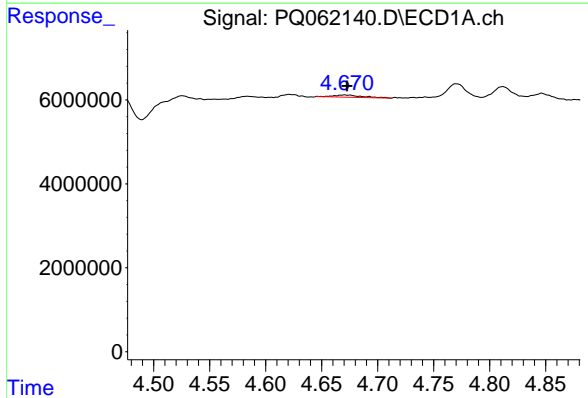
R.T.: 4.584 min  
 Delta R.T.: 0.002 min  
 Response: 780041  
 Conc: 5.12 ng/ml

Instrument :  
 ECD\_Q  
 ClientSampleId :



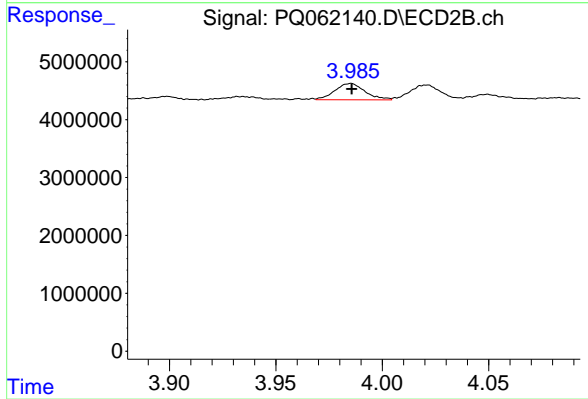
#5 AR-1016-3

R.T.: 3.935 min  
 Delta R.T.: -0.002 min  
 Response: 271148  
 Conc: 3.59 ng/ml



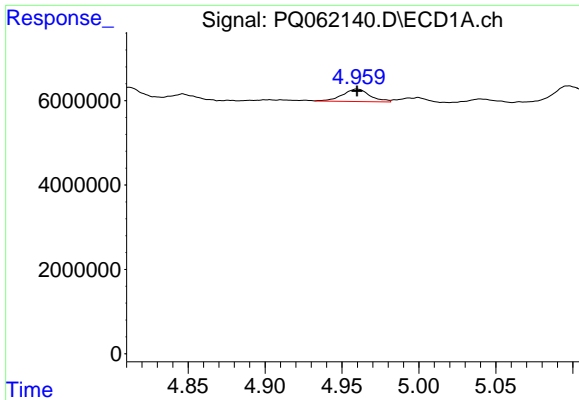
#6 AR-1016-4

R.T.: 4.670 min  
 Delta R.T.: -0.002 min  
 Response: 913185  
 Conc: 7.29 ng/ml



#6 AR-1016-4

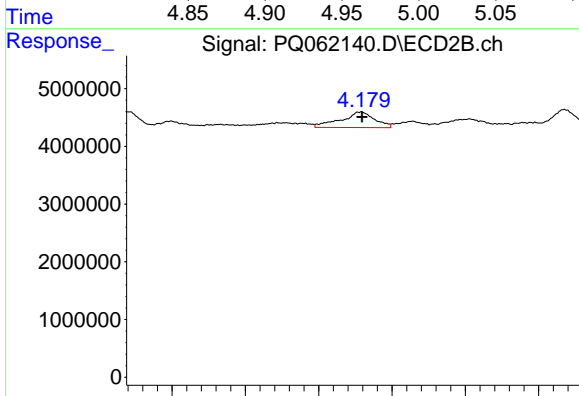
R.T.: 3.986 min  
 Delta R.T.: 0.000 min  
 Response: 2790003  
 Conc: 42.48 ng/ml



#7 AR-1016-5

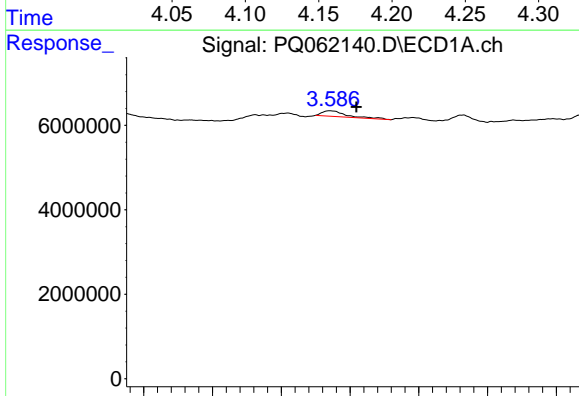
R.T.: 4.960 min  
 Delta R.T.: 0.000 min  
 Response: 3648386  
 Conc: 29.97 ng/ml

Instrument :  
 ECD\_Q  
 ClientSampleId :



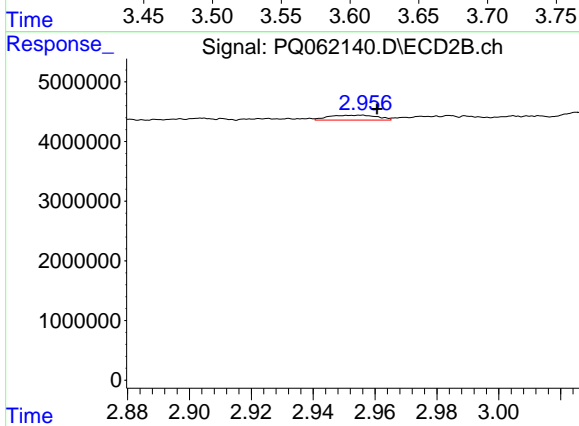
#7 AR-1016-5

R.T.: 4.179 min  
 Delta R.T.: 0.000 min  
 Response: 4320444  
 Conc: 52.70 ng/ml



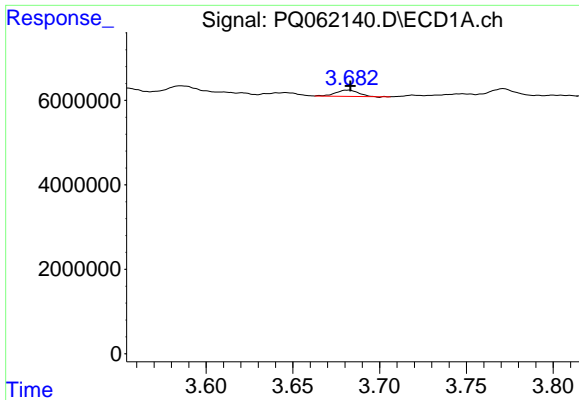
#8 AR-1221-1

R.T.: 3.586 min  
 Delta R.T.: -0.019 min  
 Response: 1631218  
 Conc: 27.14 ng/ml



#8 AR-1221-1

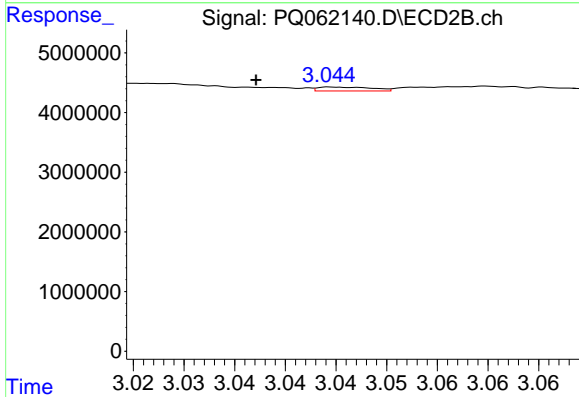
R.T.: 2.956 min  
 Delta R.T.: -0.005 min  
 Response: 899711  
 Conc: 27.27 ng/ml



#9 AR-1221-2

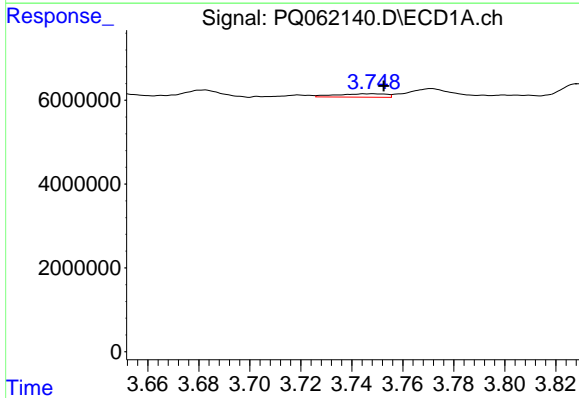
R.T.: 3.682 min  
 Delta R.T.: -0.001 min  
 Response: 1333854  
 Conc: 29.69 ng/ml

Instrument :  
 ECD\_Q  
 ClientSampleId :



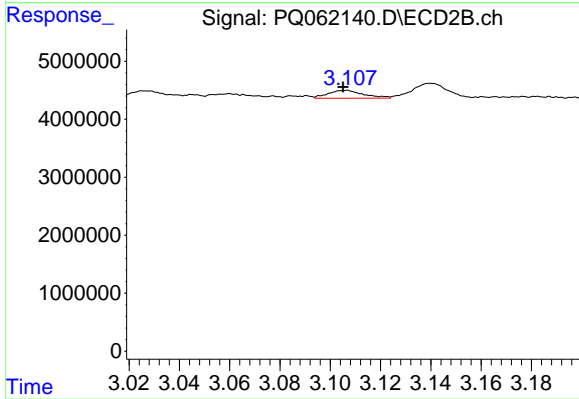
#9 AR-1221-2

R.T.: 3.045 min  
 Delta R.T.: 0.008 min  
 Response: 247195  
 Conc: 9.73 ng/ml



#10 AR-1221-3

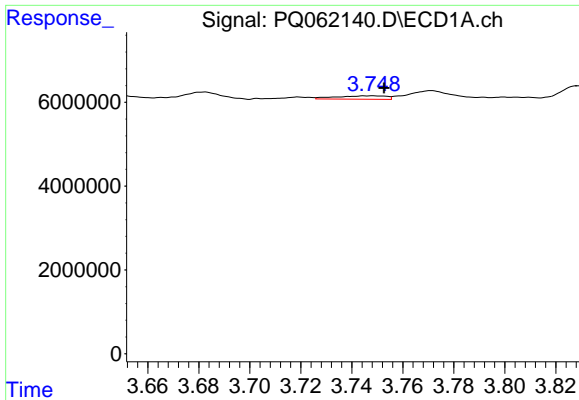
R.T.: 3.748 min  
 Delta R.T.: -0.005 min  
 Response: 1140048  
 Conc: 8.11 ng/ml



#10 AR-1221-3

R.T.: 3.107 min  
 Delta R.T.: 0.002 min  
 Response: 1317680  
 Conc: 17.09 ng/ml

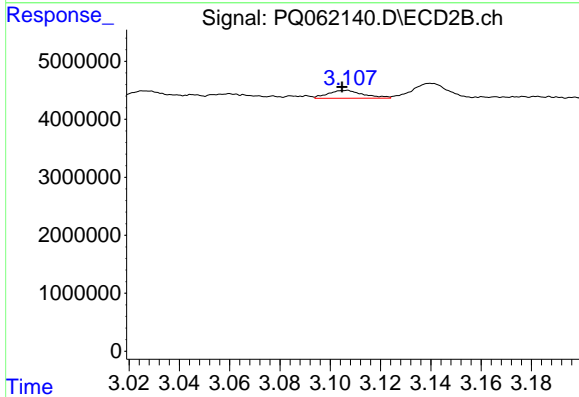




#11 AR-1232-1

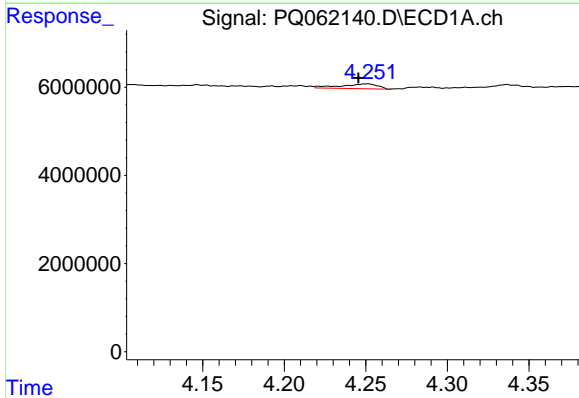
R.T.: 3.748 min  
 Delta R.T.: -0.005 min  
 Response: 1140048  
 Conc: 10.80 ng/ml

Instrument :  
 ECD\_Q  
 ClientSampleId :



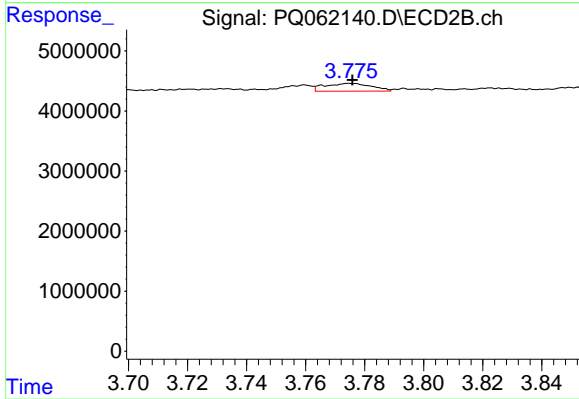
#11 AR-1232-1

R.T.: 3.107 min  
 Delta R.T.: 0.002 min  
 Response: 1317680  
 Conc: 23.00 ng/ml



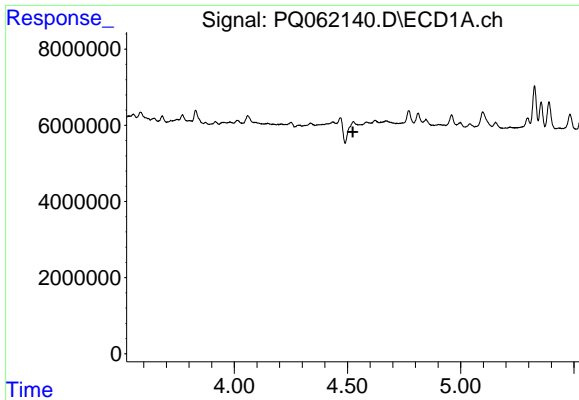
#12 AR-1232-2

R.T.: 4.251 min  
 Delta R.T.: 0.005 min  
 Response: 1707167  
 Conc: 28.86 ng/ml



#12 AR-1232-2

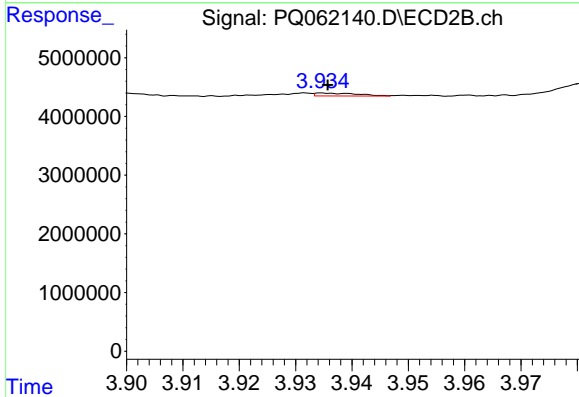
R.T.: 3.775 min  
 Delta R.T.: -0.001 min  
 Response: 1421241  
 Conc: 21.35 ng/ml



#13 AR-1232-3

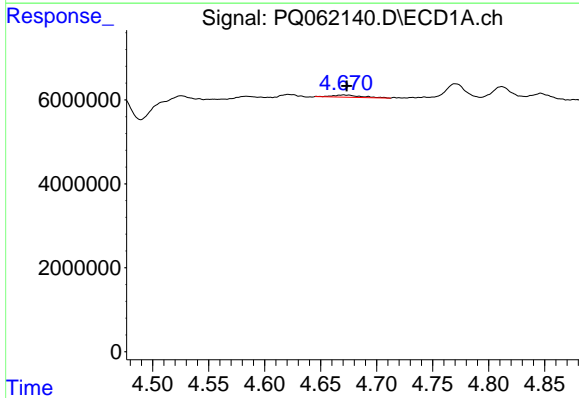
R.T.: 4.526 min  
 Delta R.T.: 0.002 min  
 Response: -4377375  
 Conc: N.D.

Instrument :  
 ECD\_Q  
 ClientSampleId :



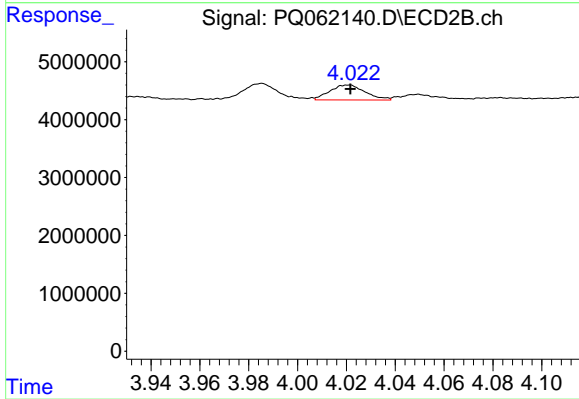
#13 AR-1232-3

R.T.: 3.935 min  
 Delta R.T.: 0.000 min  
 Response: 271148  
 Conc: 7.85 ng/ml



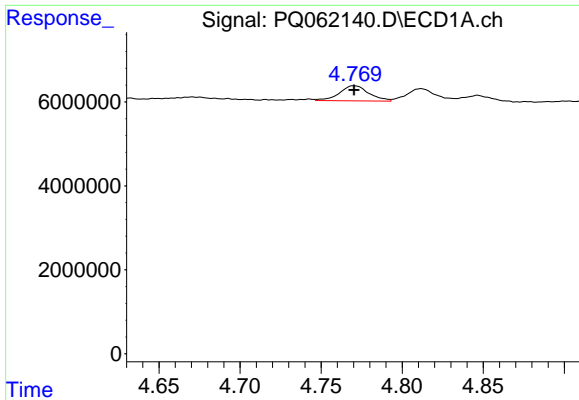
#14 AR-1232-4

R.T.: 4.670 min  
 Delta R.T.: -0.003 min  
 Response: 913185  
 Conc: 16.12 ng/ml



#14 AR-1232-4

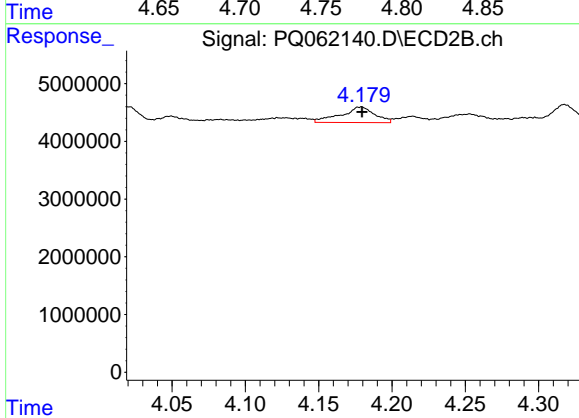
R.T.: 4.020 min  
 Delta R.T.: -0.001 min  
 Response: 2607723  
 Conc: 87.68 ng/ml



#15 AR-1232-5

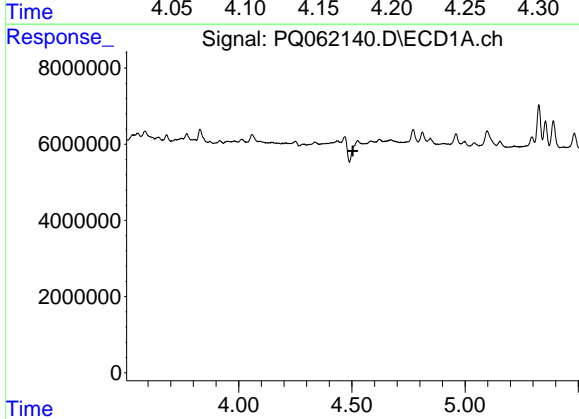
R.T.: 4.770 min  
 Delta R.T.: 0.000 min  
 Response: 4556959  
 Conc: 113.78 ng/ml

Instrument :  
 ECD\_Q  
 ClientSampleId :



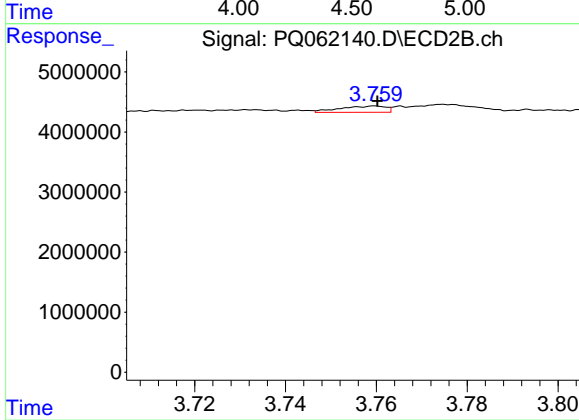
#15 AR-1232-5

R.T.: 4.179 min  
 Delta R.T.: 0.000 min  
 Response: 4320444  
 Conc: 121.15 ng/ml



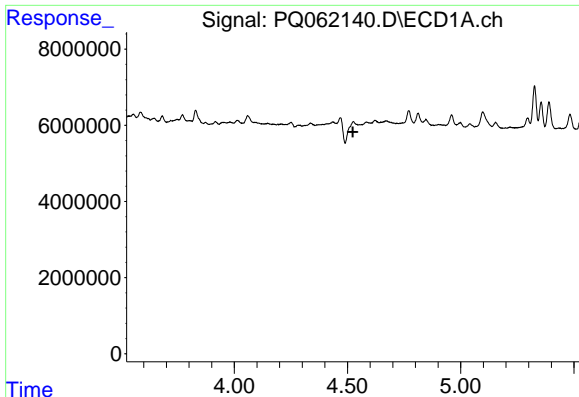
#16 AR-1242-1

R.T.: 4.526 min  
 Delta R.T.: 0.021 min  
 Response: -4377375  
 Conc: N.D.



#16 AR-1242-1

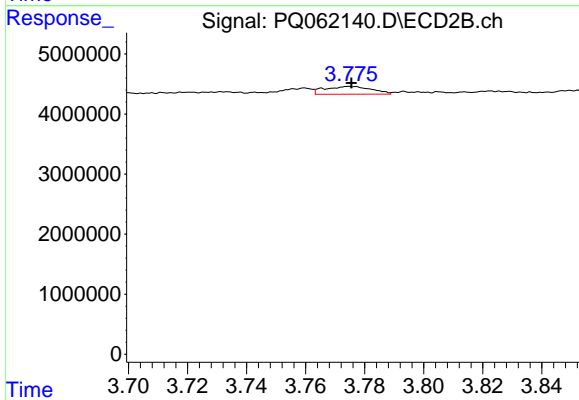
R.T.: 3.760 min  
 Delta R.T.: 0.000 min  
 Response: 727556  
 Conc: 9.41 ng/ml



#17 AR-1242-2

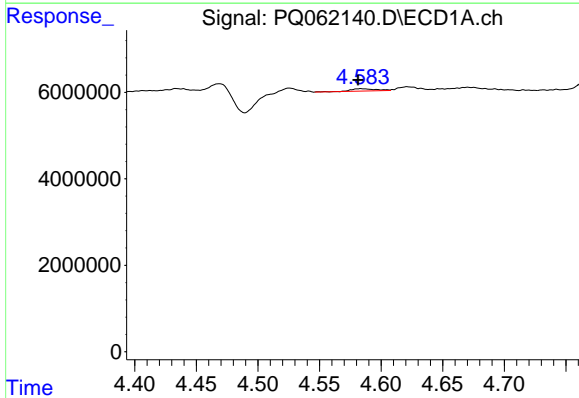
R.T.: 4.526 min  
 Delta R.T.: 0.002 min  
 Response: -4377375  
 Conc: N.D.

Instrument :  
 ECD\_Q  
 ClientSampleId :



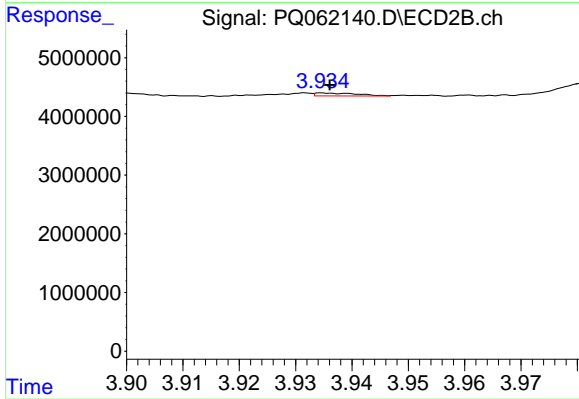
#17 AR-1242-2

R.T.: 3.775 min  
 Delta R.T.: 0.000 min  
 Response: 1421241  
 Conc: 12.79 ng/ml



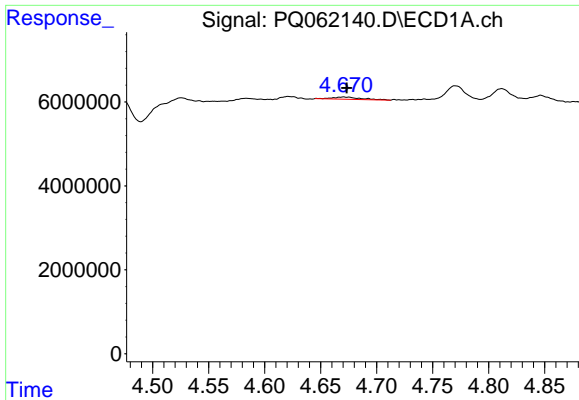
#18 AR-1242-3

R.T.: 4.584 min  
 Delta R.T.: 0.002 min  
 Response: 780041  
 Conc: 6.45 ng/ml



#18 AR-1242-3

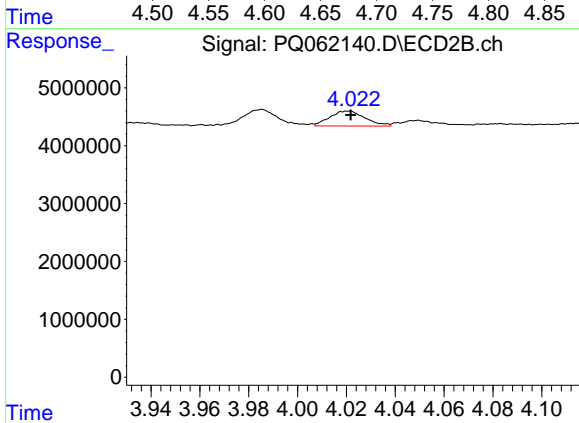
R.T.: 3.935 min  
 Delta R.T.: -0.001 min  
 Response: 271148  
 Conc: 4.63 ng/ml



#19 AR-1242-4

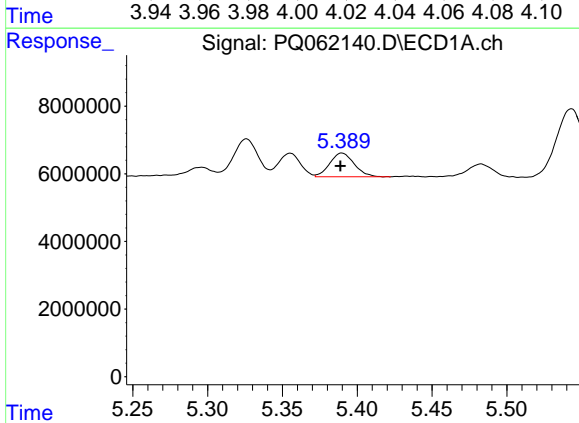
R.T.: 4.670 min  
 Delta R.T.: -0.003 min  
 Response: 913185  
 Conc: 9.37 ng/ml

Instrument :  
 ECD\_Q  
 ClientSampleId :



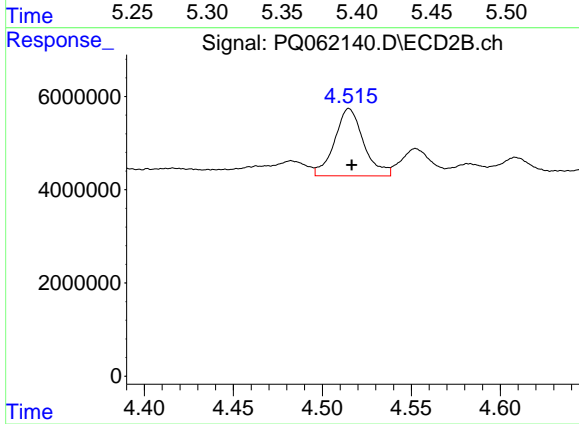
#19 AR-1242-4

R.T.: 4.020 min  
 Delta R.T.: -0.001 min  
 Response: 2607723  
 Conc: 44.48 ng/ml



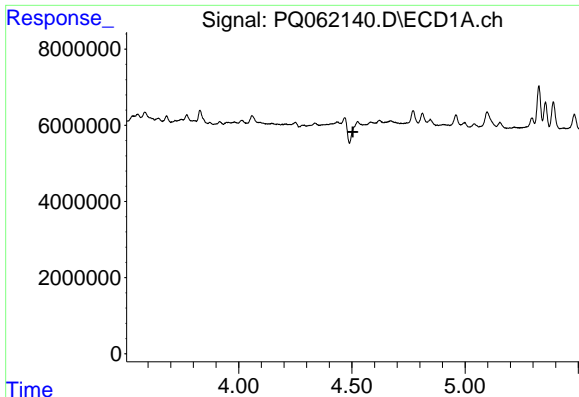
#20 AR-1242-5

R.T.: 5.390 min  
 Delta R.T.: 0.001 min  
 Response: 8005944  
 Conc: 83.63 ng/ml



#20 AR-1242-5

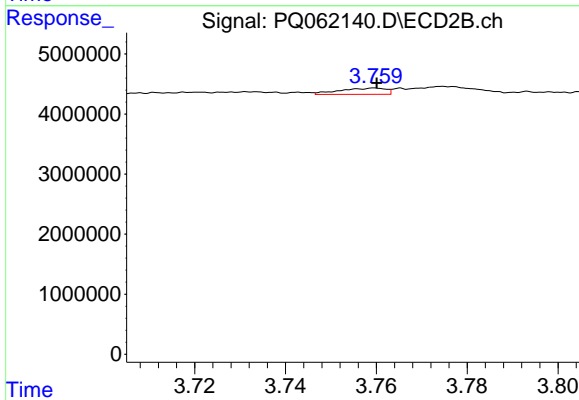
R.T.: 4.515 min  
 Delta R.T.: -0.001 min  
 Response: 16430557  
 Conc: 198.21 ng/ml



#21 AR-1248-1

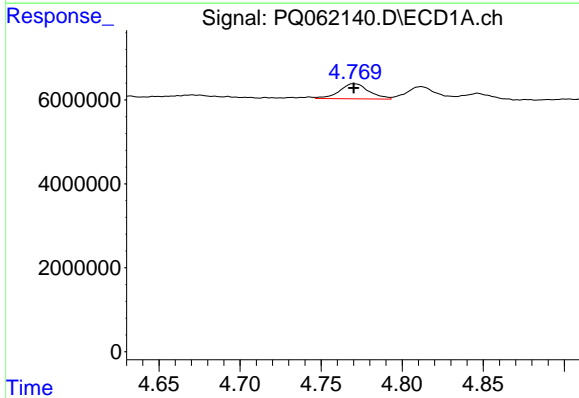
R.T.: 4.526 min  
 Delta R.T.: 0.021 min  
 Response: -4377375  
 Conc: N.D.

Instrument :  
 ECD\_Q  
 ClientSampleId :



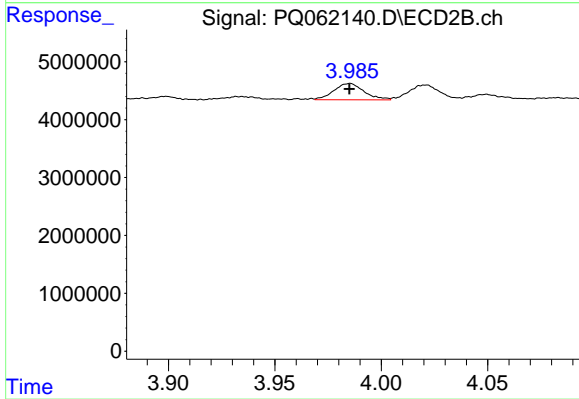
#21 AR-1248-1

R.T.: 3.760 min  
 Delta R.T.: 0.000 min  
 Response: 727556  
 Conc: 11.64 ng/ml



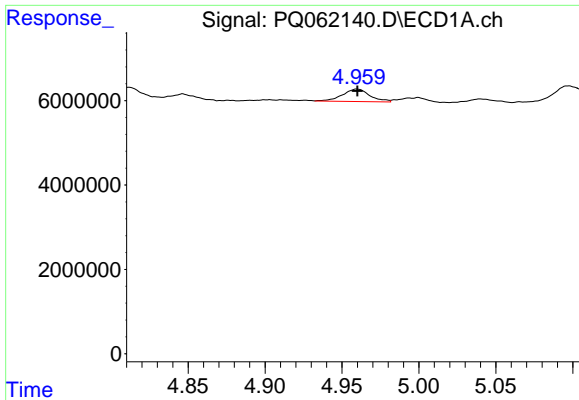
#22 AR-1248-2

R.T.: 4.770 min  
 Delta R.T.: 0.000 min  
 Response: 4556959  
 Conc: 31.72 ng/ml



#22 AR-1248-2

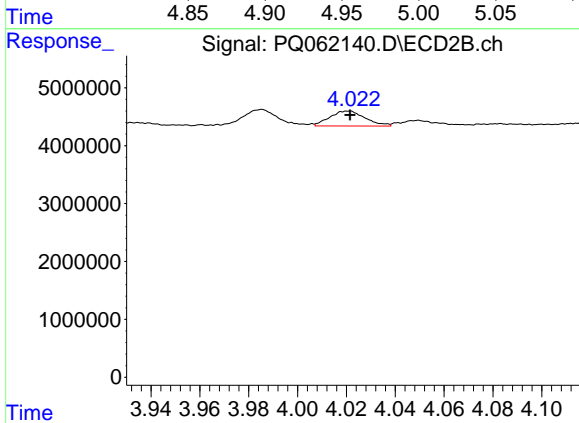
R.T.: 3.986 min  
 Delta R.T.: 0.000 min  
 Response: 2790003  
 Conc: 29.75 ng/ml



#23 AR-1248-3

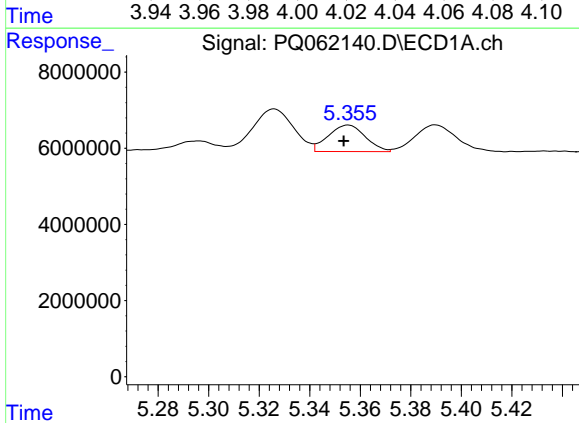
R.T.: 4.960 min  
 Delta R.T.: 0.000 min  
 Response: 3648386  
 Conc: 21.00 ng/ml

Instrument :  
 ECD\_Q  
 ClientSampleId :



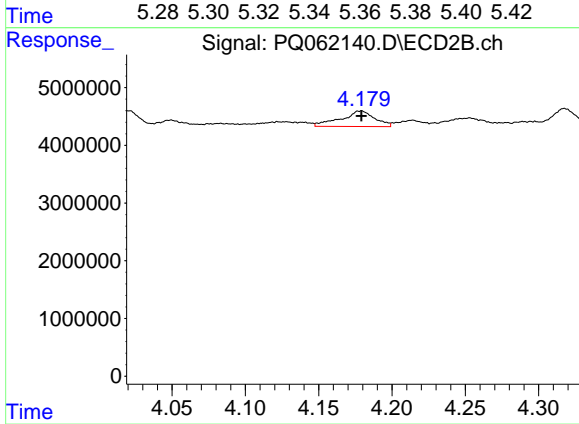
#23 AR-1248-3

R.T.: 4.020 min  
 Delta R.T.: -0.001 min  
 Response: 2607723  
 Conc: 28.80 ng/ml



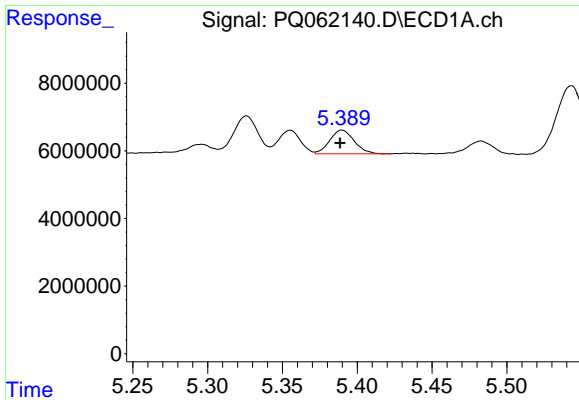
#24 AR-1248-4

R.T.: 5.355 min  
 Delta R.T.: 0.002 min  
 Response: 7120280  
 Conc: 37.10 ng/ml



#24 AR-1248-4

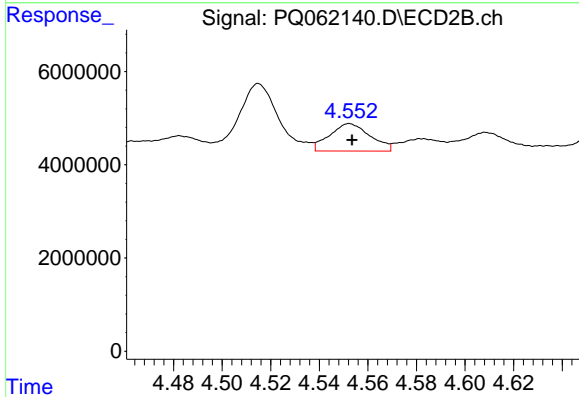
R.T.: 4.179 min  
 Delta R.T.: 0.000 min  
 Response: 4320444  
 Conc: 38.29 ng/ml



#25 AR-1248-5

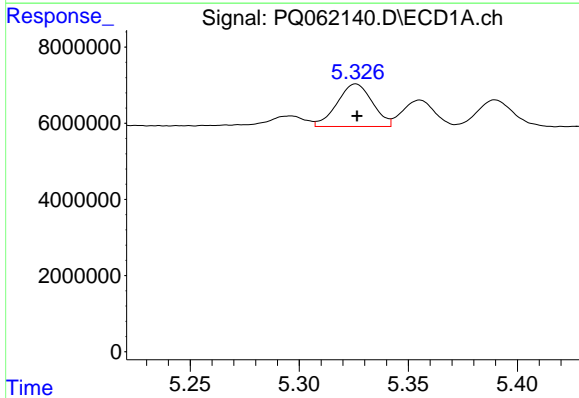
R.T.: 5.390 min  
 Delta R.T.: 0.001 min  
 Response: 8005944  
 Conc: 44.20 ng/ml

Instrument :  
 ECD\_Q  
 ClientSampleId :



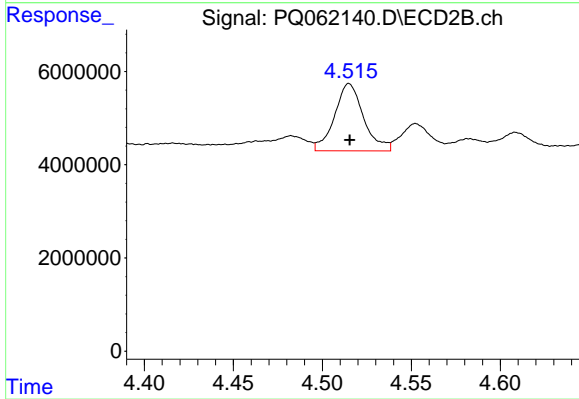
#25 AR-1248-5

R.T.: 4.552 min  
 Delta R.T.: -0.001 min  
 Response: 6844649  
 Conc: 61.10 ng/ml



#26 AR-1254-1

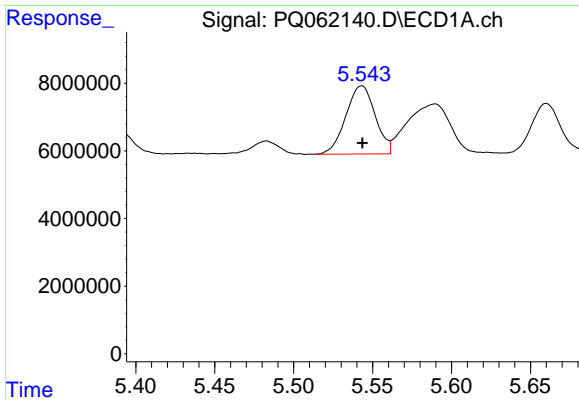
R.T.: 5.326 min  
 Delta R.T.: 0.000 min  
 Response: 12619819  
 Conc: 67.91 ng/ml



#26 AR-1254-1

R.T.: 4.515 min  
 Delta R.T.: 0.000 min  
 Response: 16430557  
 Conc: 101.76 ng/ml

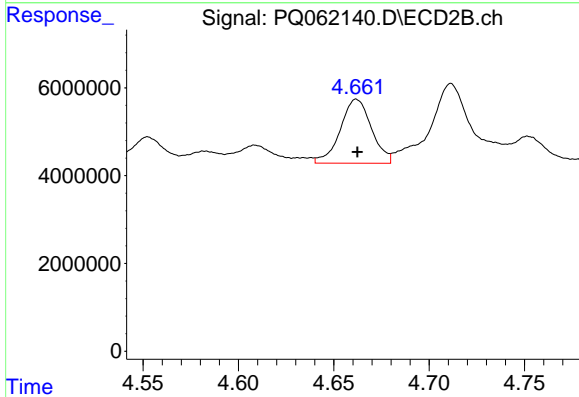




#27 AR-1254-2

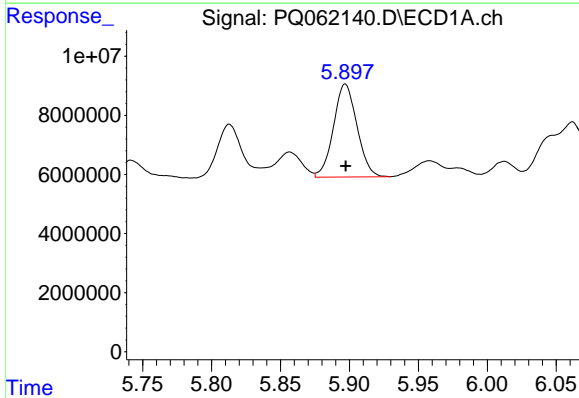
R.T.: 5.543 min  
 Delta R.T.: 0.000 min  
 Response: 26091747  
 Conc: 89.75 ng/ml

Instrument :  
 ECD\_Q  
 ClientSampleId :



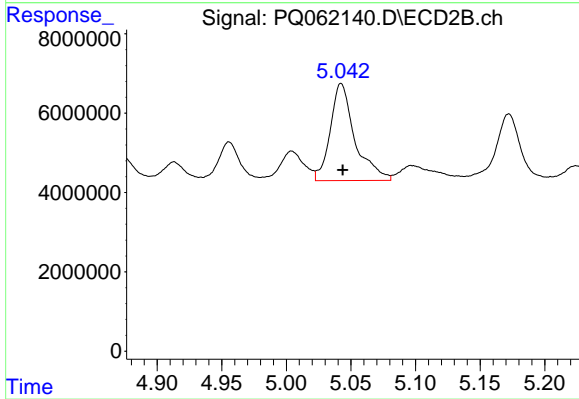
#27 AR-1254-2

R.T.: 4.662 min  
 Delta R.T.: 0.000 min  
 Response: 16588814  
 Conc: 112.68 ng/ml



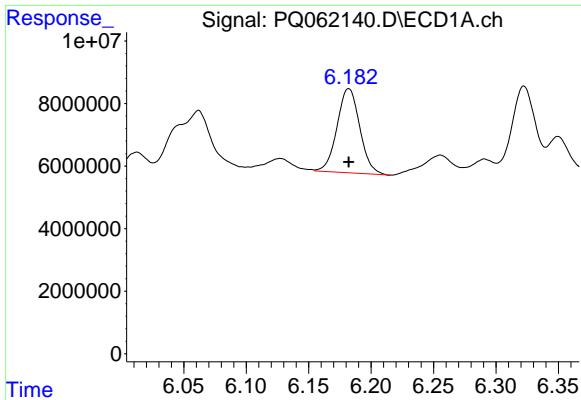
#28 AR-1254-3

R.T.: 5.897 min  
 Delta R.T.: 0.000 min  
 Response: 37379662  
 Conc: 121.70 ng/ml



#28 AR-1254-3

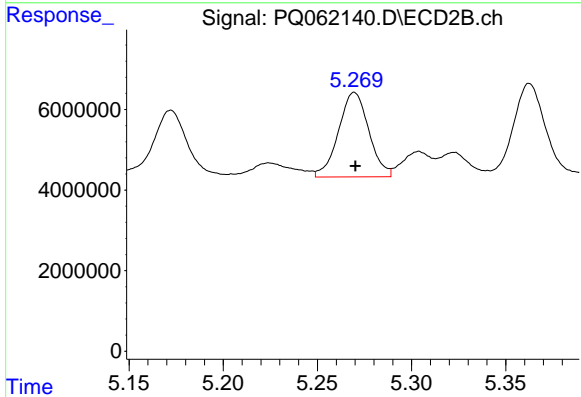
R.T.: 5.042 min  
 Delta R.T.: -0.001 min  
 Response: 32471993  
 Conc: 138.95 ng/ml



#29 AR-1254-4

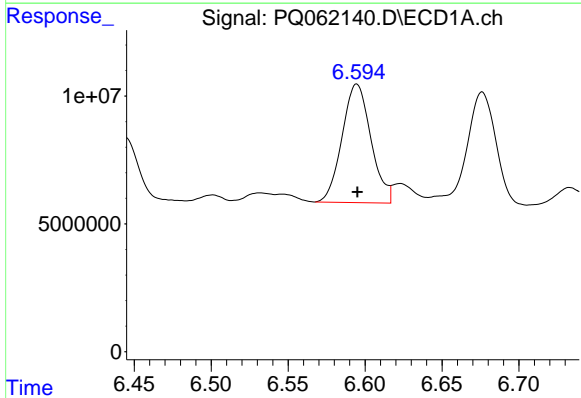
R.T.: 6.182 min  
 Delta R.T.: 0.000 min  
 Response: 34142277  
 Conc: 147.04 ng/ml

Instrument :  
 ECD\_Q  
 ClientSampleId :



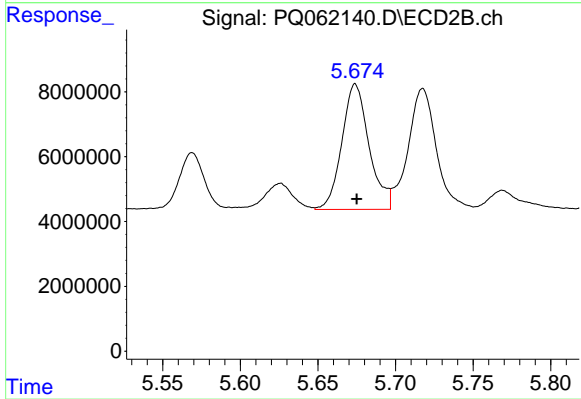
#29 AR-1254-4

R.T.: 5.270 min  
 Delta R.T.: 0.000 min  
 Response: 23522074  
 Conc: 154.33 ng/ml



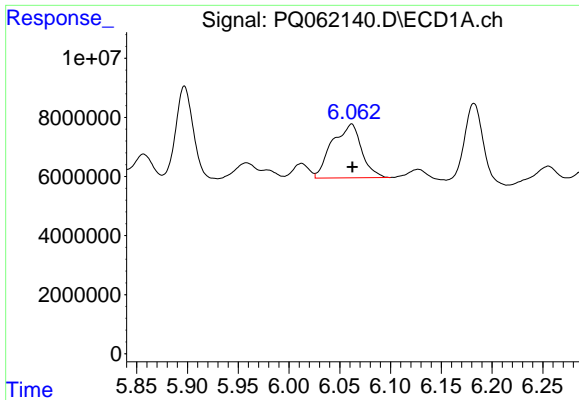
#30 AR-1254-5

R.T.: 6.595 min  
 Delta R.T.: 0.000 min  
 Response: 60398851  
 Conc: 235.13 ng/ml



#30 AR-1254-5

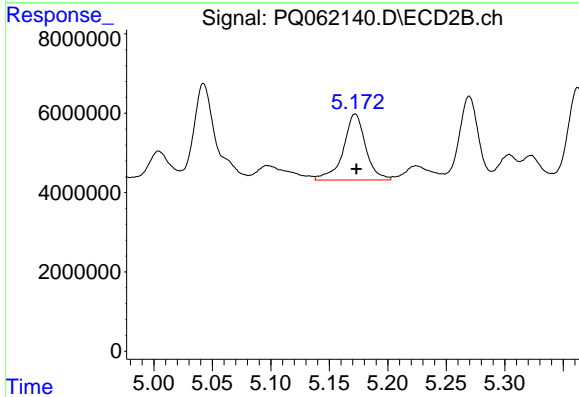
R.T.: 5.674 min  
 Delta R.T.: 0.000 min  
 Response: 47259197  
 Conc: 204.77 ng/ml



#31 AR-1260-1

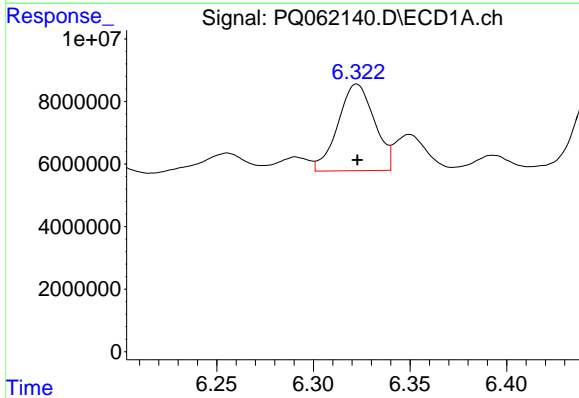
R.T.: 6.062 min  
 Delta R.T.: 0.000 min  
 Response: 36817711  
 Conc: 156.05 ng/ml

Instrument :  
 ECD\_Q  
 ClientSampleId :



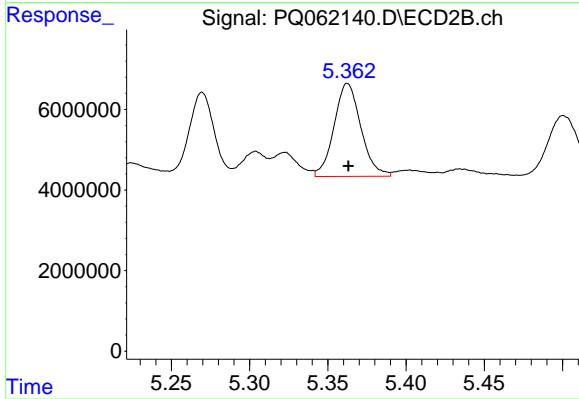
#31 AR-1260-1

R.T.: 5.172 min  
 Delta R.T.: 0.000 min  
 Response: 22197055  
 Conc: 133.27 ng/ml



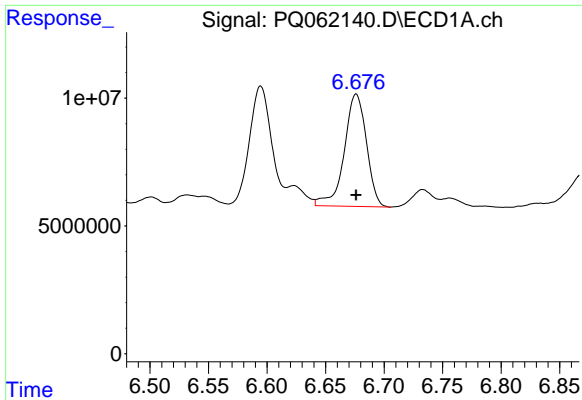
#32 AR-1260-2

R.T.: 6.322 min  
 Delta R.T.: 0.000 min  
 Response: 36375369  
 Conc: 125.95 ng/ml



#32 AR-1260-2

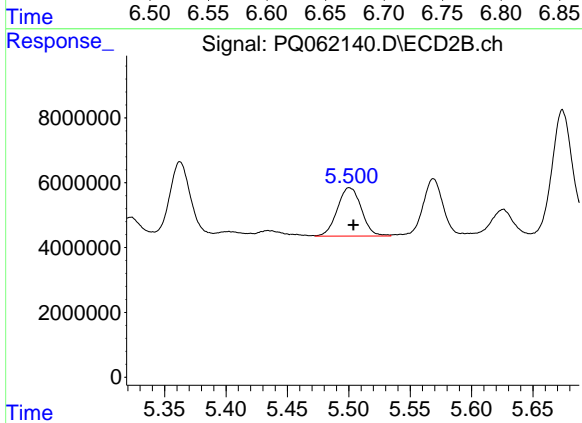
R.T.: 5.362 min  
 Delta R.T.: 0.000 min  
 Response: 27541921  
 Conc: 132.45 ng/ml



#33 AR-1260-3

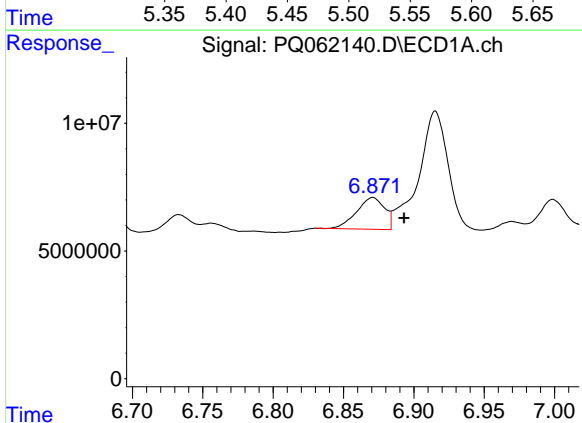
R.T.: 6.676 min  
 Delta R.T.: 0.000 min  
 Response: 58127033  
 Conc: 329.19 ng/ml

Instrument :  
 ECD\_Q  
 ClientSampleId :



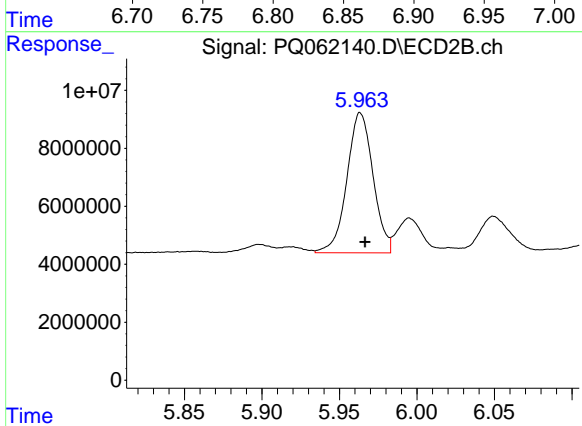
#33 AR-1260-3

R.T.: 5.500 min  
 Delta R.T.: -0.003 min  
 Response: 20317115  
 Conc: 104.43 ng/ml



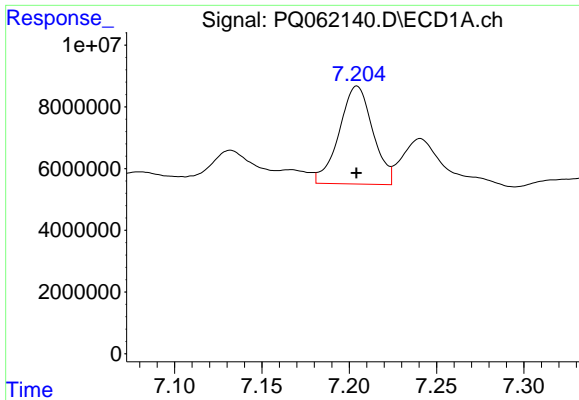
#34 AR-1260-4

R.T.: 6.871 min  
 Delta R.T.: -0.022 min  
 Response: 17289999  
 Conc: 82.08 ng/ml



#34 AR-1260-4

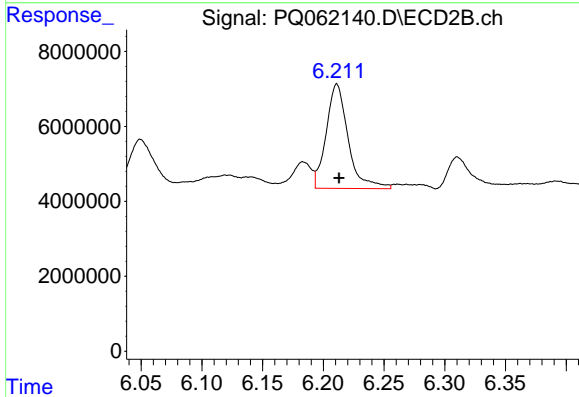
R.T.: 5.963 min  
 Delta R.T.: -0.003 min  
 Response: 56784324  
 Conc: 389.30 ng/ml



#35 AR-1260-5

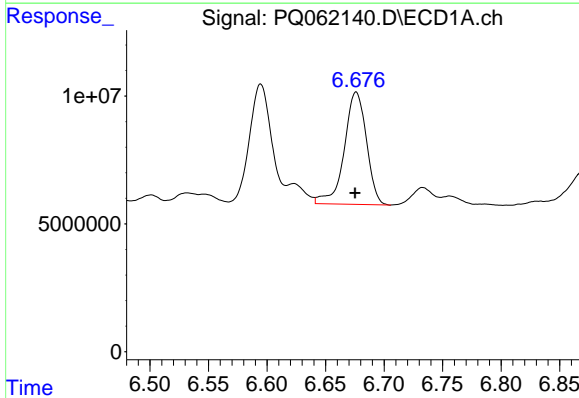
R.T.: 7.204 min  
 Delta R.T.: 0.000 min  
 Response: 42520237  
 Conc: 103.55 ng/ml

Instrument :  
 ECD\_Q  
 ClientSampleId :



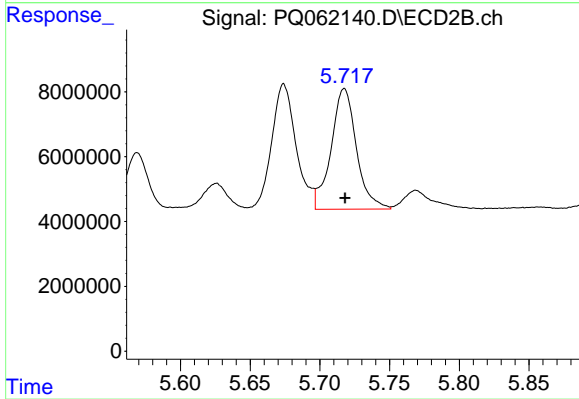
#35 AR-1260-5

R.T.: 6.211 min  
 Delta R.T.: -0.002 min  
 Response: 35062782  
 Conc: 105.59 ng/ml



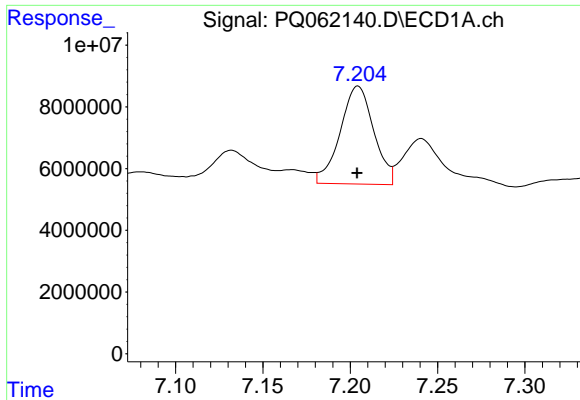
#36 AR-1262-1

R.T.: 6.676 min  
 Delta R.T.: 0.001 min  
 Response: 58127033  
 Conc: 190.62 ng/ml



#36 AR-1262-1

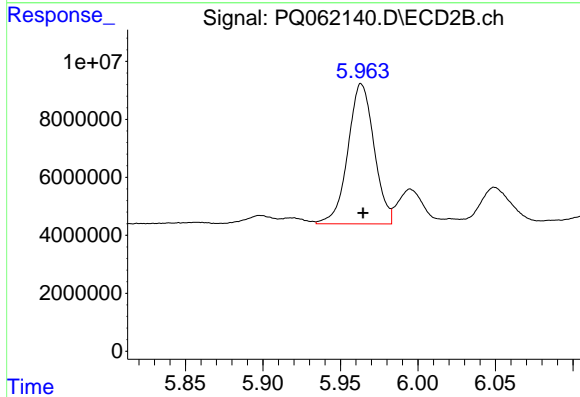
R.T.: 5.718 min  
 Delta R.T.: 0.000 min  
 Response: 47124202  
 Conc: 202.71 ng/ml



#37 AR-1262-2

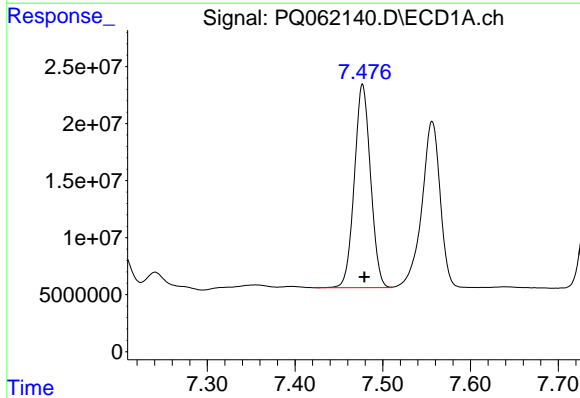
R.T.: 7.204 min  
 Delta R.T.: 0.000 min  
 Response: 42520237  
 Conc: 80.73 ng/ml

Instrument :  
 ECD\_Q  
 ClientSampleId :



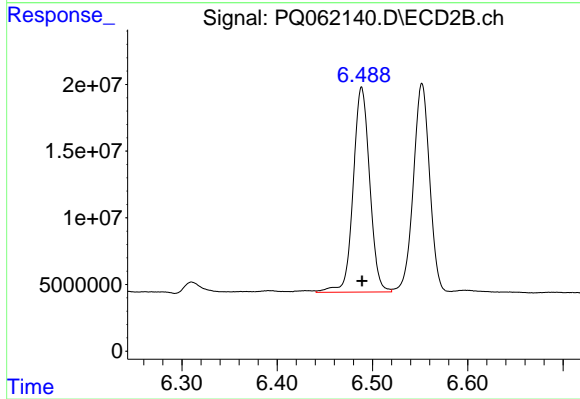
#37 AR-1262-2

R.T.: 5.963 min  
 Delta R.T.: -0.001 min  
 Response: 56784324  
 Conc: 262.64 ng/ml



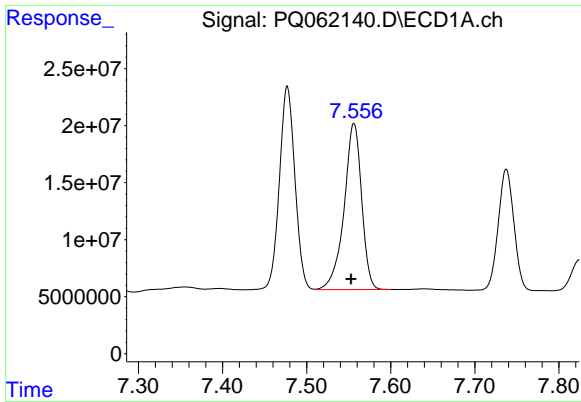
#38 AR-1262-3

R.T.: 7.477 min  
 Delta R.T.: -0.002 min  
 Response: 228676147  
 Conc: 649.09 ng/ml



#38 AR-1262-3

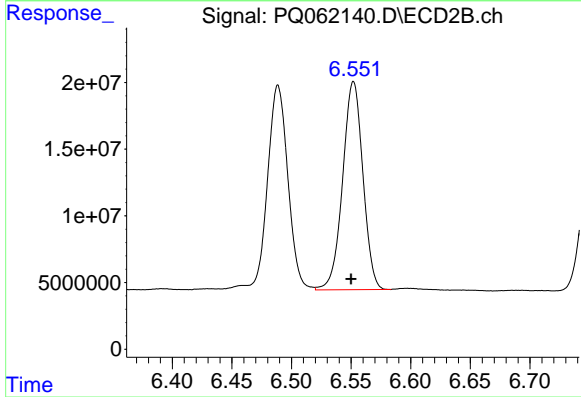
R.T.: 6.489 min  
 Delta R.T.: 0.000 min  
 Response: 185218297  
 Conc: 1062.47 ng/ml



#39 AR-1262-4

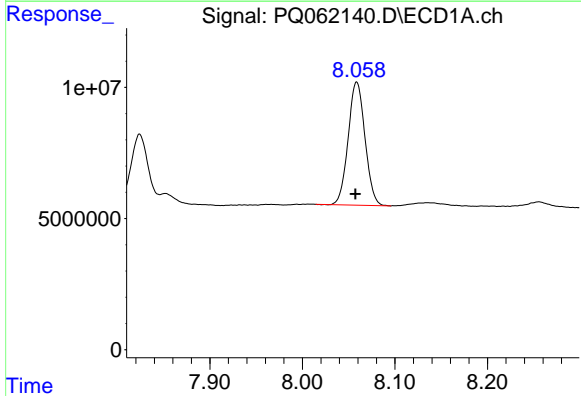
R.T.: 7.556 min  
 Delta R.T.: 0.004 min  
 Response: 211471489  
 Conc: 792.86 ng/ml

Instrument :  
 ECD\_Q  
 ClientSampleId :



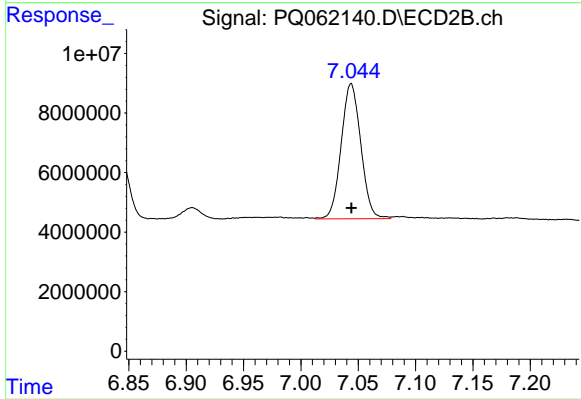
#39 AR-1262-4

R.T.: 6.552 min  
 Delta R.T.: 0.002 min  
 Response: 184765342  
 Conc: 573.28 ng/ml



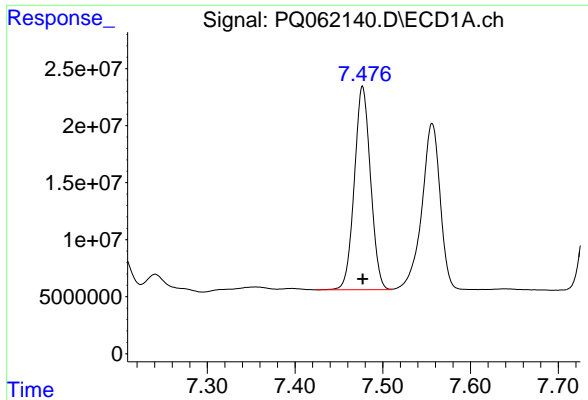
#40 AR-1262-5

R.T.: 8.059 min  
 Delta R.T.: 0.001 min  
 Response: 59388036  
 Conc: 334.56 ng/ml



#40 AR-1262-5

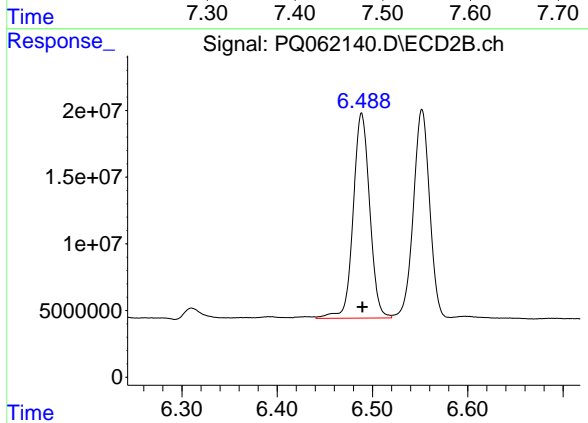
R.T.: 7.044 min  
 Delta R.T.: 0.000 min  
 Response: 54129638  
 Conc: 348.96 ng/ml



#41 AR-1268-1

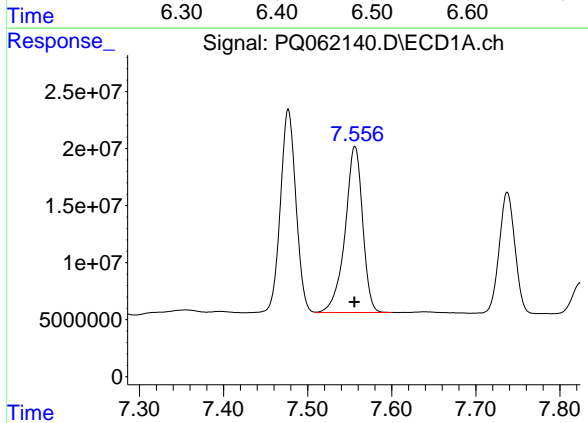
R.T.: 7.477 min  
 Delta R.T.: 0.000 min  
 Response: 228676147  
 Conc: 402.97 ng/ml

Instrument :  
 ECD\_Q  
 ClientSampleId :



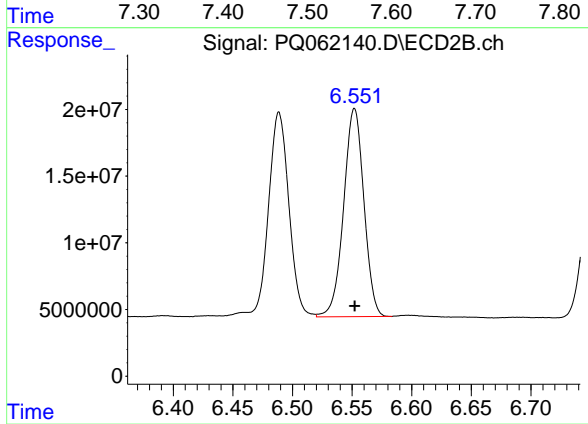
#41 AR-1268-1

R.T.: 6.489 min  
 Delta R.T.: 0.000 min  
 Response: 185218297  
 Conc: 393.63 ng/ml



#42 AR-1268-2

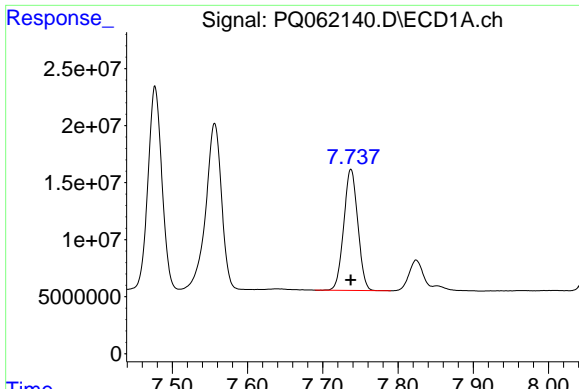
R.T.: 7.556 min  
 Delta R.T.: 0.000 min  
 Response: 211471489  
 Conc: 414.75 ng/ml



#42 AR-1268-2

R.T.: 6.552 min  
 Delta R.T.: 0.000 min  
 Response: 184765342  
 Conc: 436.07 ng/ml

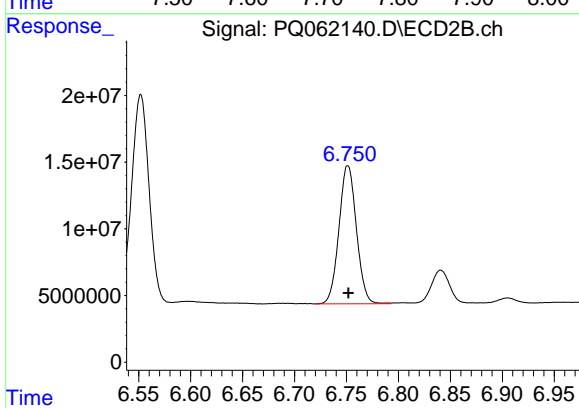




#43 AR-1268-3

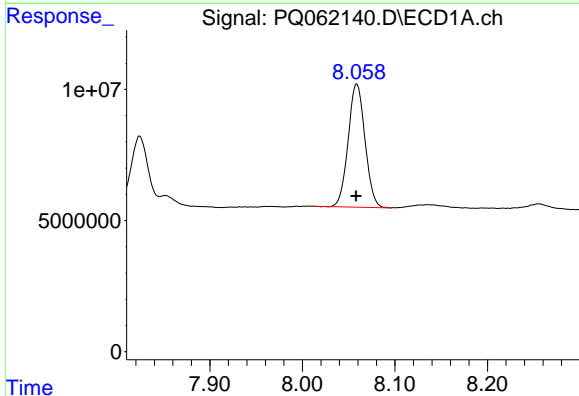
R.T.: 7.737 min  
 Delta R.T.: 0.000 min  
 Response: 137777725  
 Conc: 322.84 ng/ml

Instrument :  
 ECD\_Q  
 ClientSampleId :



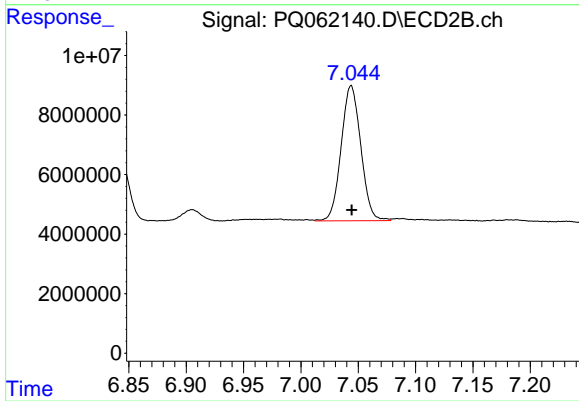
#43 AR-1268-3

R.T.: 6.751 min  
 Delta R.T.: 0.000 min  
 Response: 121211676  
 Conc: 329.09 ng/ml



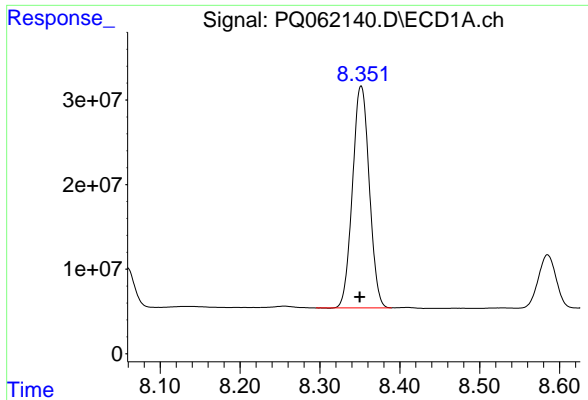
#44 AR-1268-4

R.T.: 8.059 min  
 Delta R.T.: 0.000 min  
 Response: 59388036  
 Conc: 324.55 ng/ml



#44 AR-1268-4

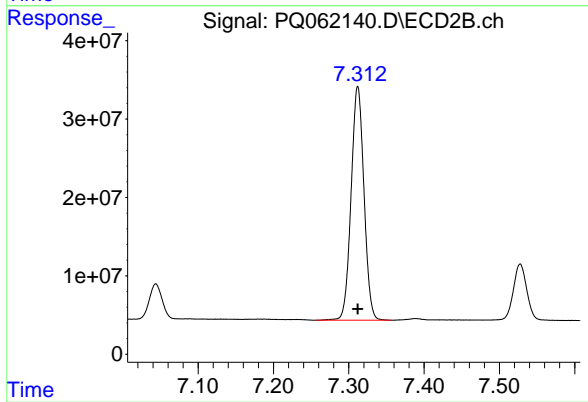
R.T.: 7.044 min  
 Delta R.T.: 0.000 min  
 Response: 54129638  
 Conc: 338.44 ng/ml



#45 AR-1268-5

R.T.: 8.352 min  
Delta R.T.: 0.002 min  
Response: 383115165  
Conc: 303.88 ng/ml

Instrument :  
ECD\_Q  
ClientSampleId :



#45 AR-1268-5

R.T.: 7.312 min  
Delta R.T.: 0.000 min  
Response: 353700079  
Conc: 303.10 ng/ml