

Data Path : Z:\pestpcbsrv\HPCHEM1\ECD_Q\Data\PQ071223\
 Data File : PQ062140.D
 Signal(s) : Signal #1: ECD1A.ch Signal #2: ECD2B.ch
 Acq On : 12 Jul 2023 19:04
 Operator : YP\AJ
 Sample : 03567-25
 Misc :
 ALS Vial : 30 Sample Multiplier: 1

Instrument :
 ECD_Q
 ClientSampleId :
 61R-19B

Integration File signal 1: autoint1.e
 Integration File signal 2: autoint2.e
 Quant Time: Jul 12 21:02:24 2023
 Quant Method : Z:\pestpcbsrv\HPCHEM1\ECD_Q\Method\PQ070123.M
 Quant Title : GC EXTRACTABLES
 QLast Update : Tue Jul 04 05:32:27 2023
 Response via : Initial Calibration
 Integrator: ChemStation

Volume Inj. : 2 µl
 Signal #1 Phase : ZB-MR1 Signal #2 Phase: ZB-MR2
 Signal #1 Info : 30Mx0.32mmx 0.50µ Signal #2 Info : 30M x 0.32mm x 0.25µm

Compound	RT#1	RT#2	Resp#1	Resp#2	ng/ml	ng/ml

System Monitoring Compounds						
1) SA Tetrachlo...	3.404	2.759	88162238	52675742	18.073	20.994
2) SA Decachlor...	8.585	7.528	96639734	86723456	26.602	26.026
Target Compounds						
26) L6 AR-1254-1	5.326	4.515	12619819	16430557	67.914	101.761 #
27) L6 AR-1254-2	5.543	4.662	26091747	16588814	89.751	112.677 #
28) L6 AR-1254-3	5.897	5.042	37379662	32471993	121.702	138.947
29) L6 AR-1254-4	6.182	5.270	34142277	23522074	147.043	154.330
30) L6 AR-1254-5	6.595	5.674	60398851	47259197	235.134	204.766
41) L9 AR-1268-1	7.477	6.489	228.7E6	185.2E6	402.969	393.631
42) L9 AR-1268-2	7.556	6.552	211.5E6	184.8E6	414.753	436.074
43) L9 AR-1268-3	7.737	6.751	137.8E6	121.2E6	322.836	329.094
44) L9 AR-1268-4	8.059	7.044	59388036	54129638	324.551	338.445
45) L9 AR-1268-5	8.352	7.312	383.1E6	353.7E6	303.878	303.097

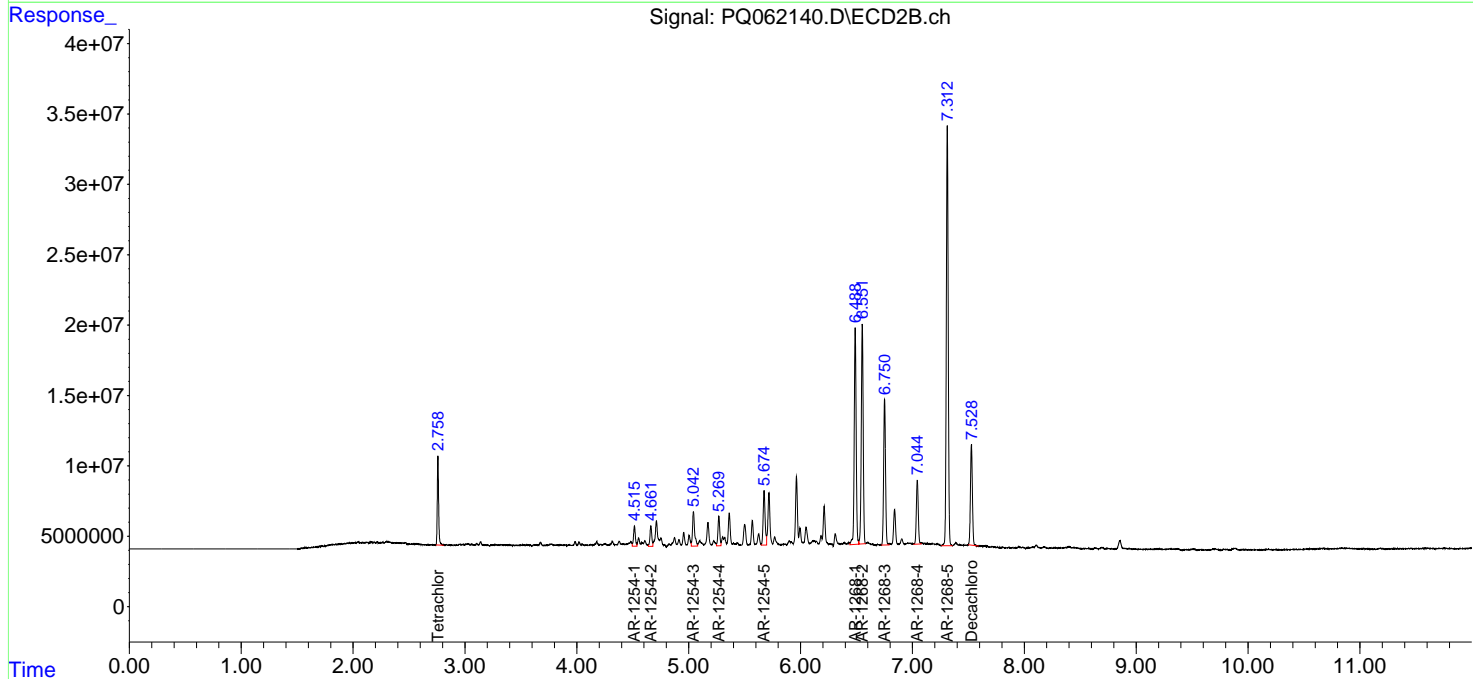
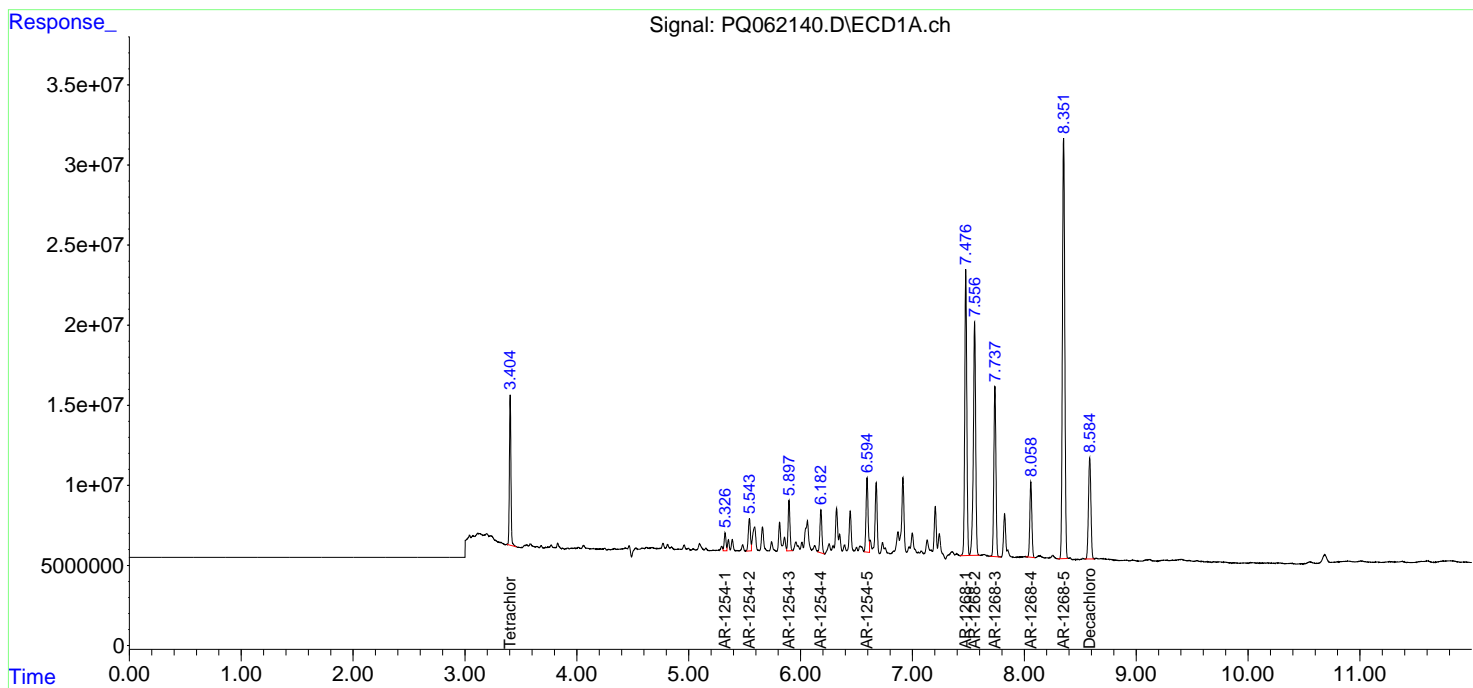
(f)=RT Delta > 1/2 Window (#)=Amounts differ by > 25% (m)=manual int.

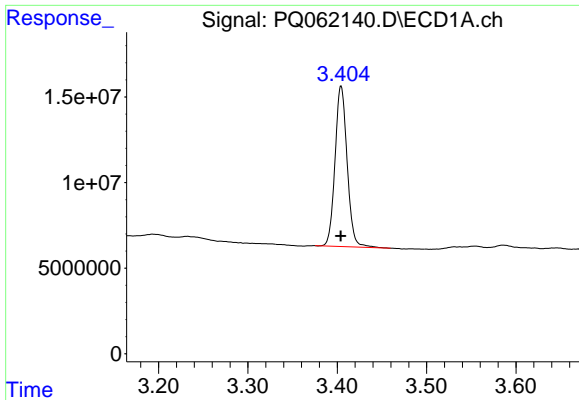
Data Path : Z:\pestpcbsrv\HPCHEM1\ECD_Q\Data\PQ071223\
 Data File : PQ062140.D
 Signal(s) : Signal #1: ECD1A.ch Signal #2: ECD2B.ch
 Acq On : 12 Jul 2023 19:04
 Operator : YP\AJ
 Sample : 03567-25
 Misc :
 ALS Vial : 30 Sample Multiplier: 1

Instrument :
 ECD_Q
 ClientSampleId :
 61R-19B

Integration File signal 1: autoint1.e
 Integration File signal 2: autoint2.e
 Quant Time: Jul 12 21:02:24 2023
 Quant Method : Z:\pestpcbsrv\HPCHEM1\ECD_Q\Method\PQ070123.M
 Quant Title : GC EXTRACTABLES
 QLast Update : Tue Jul 04 05:32:27 2023
 Response via : Initial Calibration
 Integrator: ChemStation

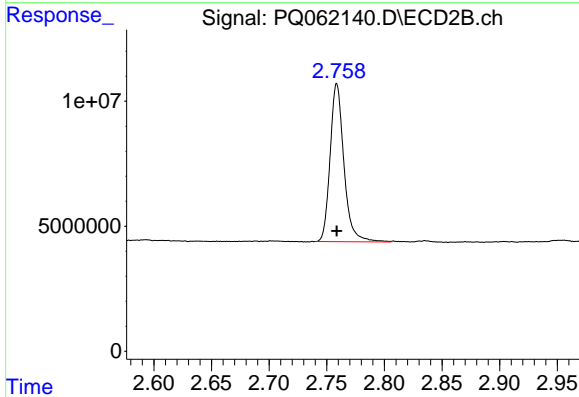
Volume Inj. : 2 µl
 Signal #1 Phase : ZB-MR1 Signal #2 Phase: ZB-MR2
 Signal #1 Info : 30Mx0.32mmx 0.50µ Signal #2 Info : 30M x 0.32mm x 0.25µm



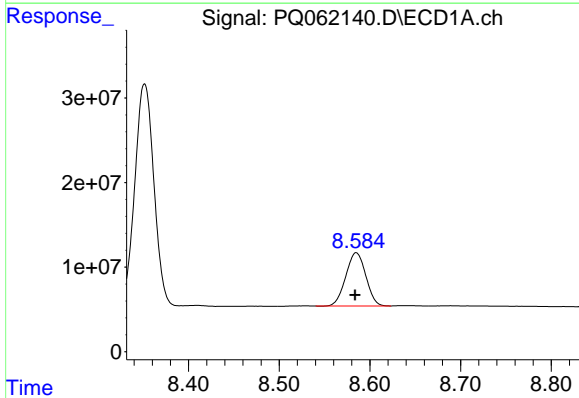


#1 Tetrachloro-m-xylene
 R.T.: 3.404 min
 Delta R.T.: 0.000 min
 Response: 88162238
 Conc: 18.07 ng/ml

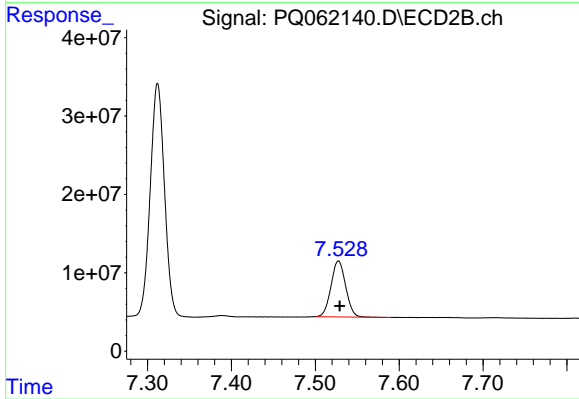
Instrument :
 ECD_Q
 ClientSampleId :
 61R-19B



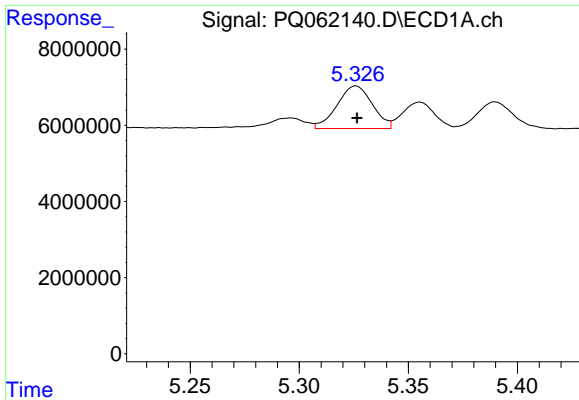
#1 Tetrachloro-m-xylene
 R.T.: 2.759 min
 Delta R.T.: 0.000 min
 Response: 52675742
 Conc: 20.99 ng/ml



#2 Decachlorobiphenyl
 R.T.: 8.585 min
 Delta R.T.: 0.001 min
 Response: 96639734
 Conc: 26.60 ng/ml



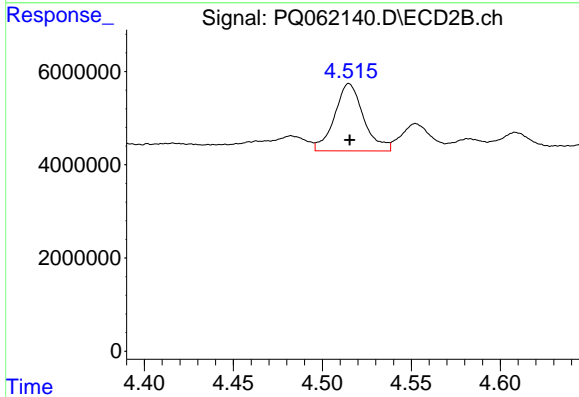
#2 Decachlorobiphenyl
 R.T.: 7.528 min
 Delta R.T.: -0.002 min
 Response: 86723456
 Conc: 26.03 ng/ml



#26 AR-1254-1

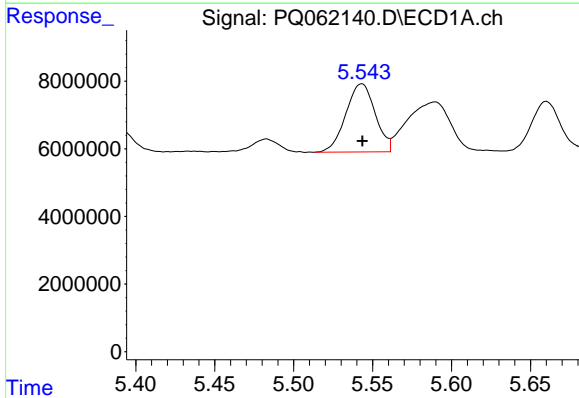
R.T.: 5.326 min
Delta R.T.: 0.000 min
Response: 12619819
Conc: 67.91 ng/ml

Instrument :
ECD_Q
ClientSampleId :
61R-19B



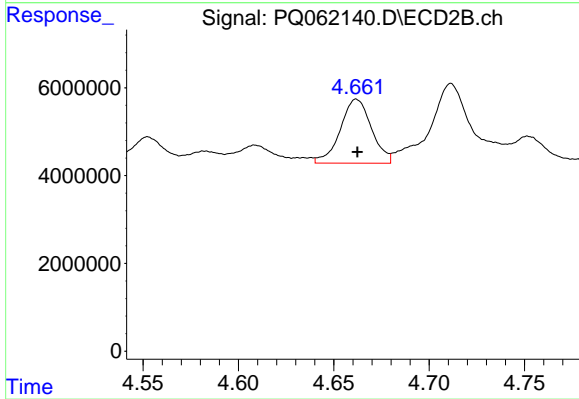
#26 AR-1254-1

R.T.: 4.515 min
Delta R.T.: 0.000 min
Response: 16430557
Conc: 101.76 ng/ml



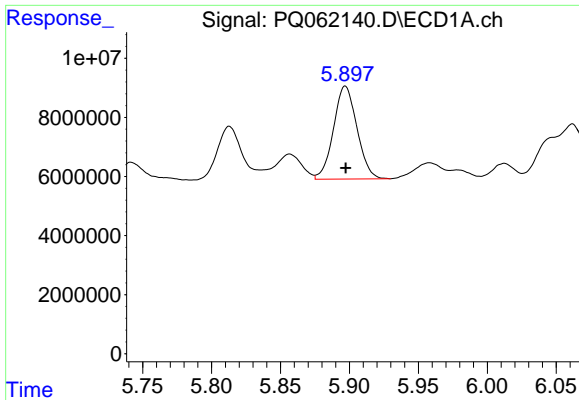
#27 AR-1254-2

R.T.: 5.543 min
Delta R.T.: 0.000 min
Response: 26091747
Conc: 89.75 ng/ml



#27 AR-1254-2

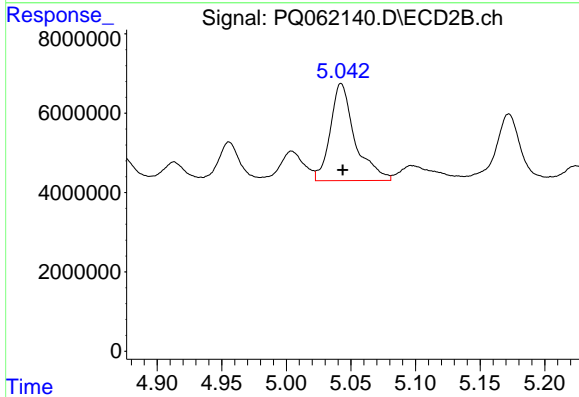
R.T.: 4.662 min
Delta R.T.: 0.000 min
Response: 16588814
Conc: 112.68 ng/ml



#28 AR-1254-3

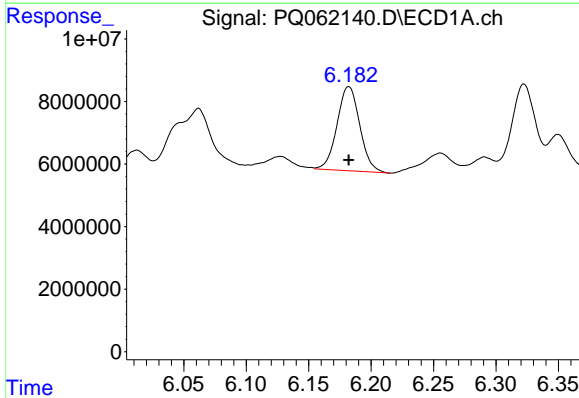
R.T.: 5.897 min
 Delta R.T.: 0.000 min
 Response: 37379662
 Conc: 121.70 ng/ml

Instrument :
 ECD_Q
 ClientSampleId :
 61R-19B



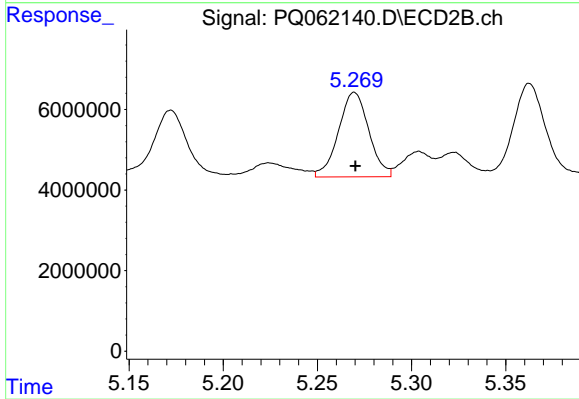
#28 AR-1254-3

R.T.: 5.042 min
 Delta R.T.: -0.001 min
 Response: 32471993
 Conc: 138.95 ng/ml



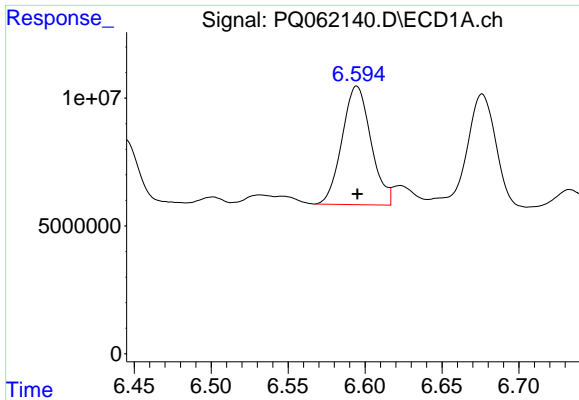
#29 AR-1254-4

R.T.: 6.182 min
 Delta R.T.: 0.000 min
 Response: 34142277
 Conc: 147.04 ng/ml



#29 AR-1254-4

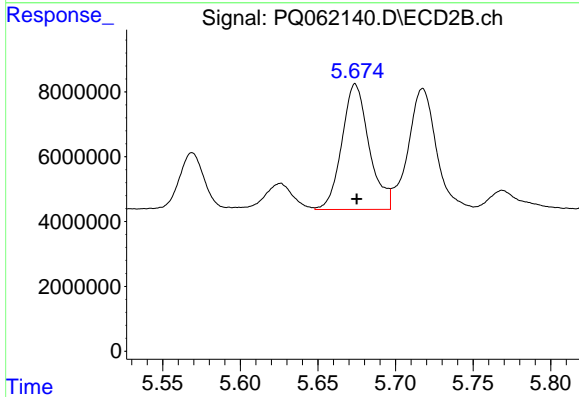
R.T.: 5.270 min
 Delta R.T.: 0.000 min
 Response: 23522074
 Conc: 154.33 ng/ml



#30 AR-1254-5

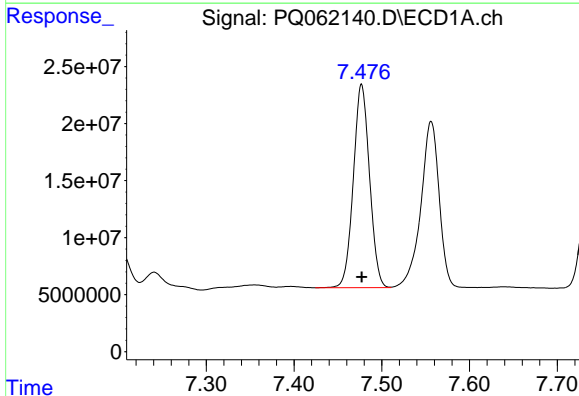
R.T.: 6.595 min
 Delta R.T.: 0.000 min
 Response: 60398851
 Conc: 235.13 ng/ml

Instrument :
 ECD_Q
 ClientSampleId :
 61R-19B



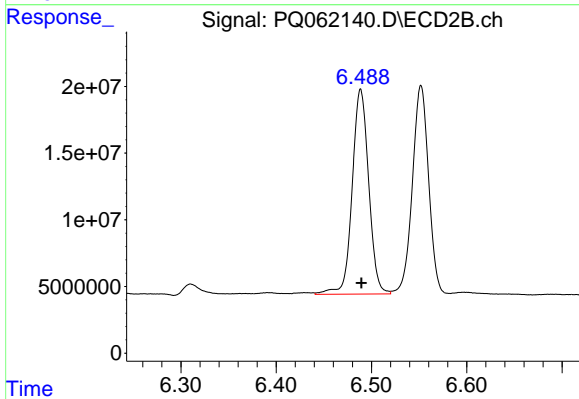
#30 AR-1254-5

R.T.: 5.674 min
 Delta R.T.: 0.000 min
 Response: 47259197
 Conc: 204.77 ng/ml



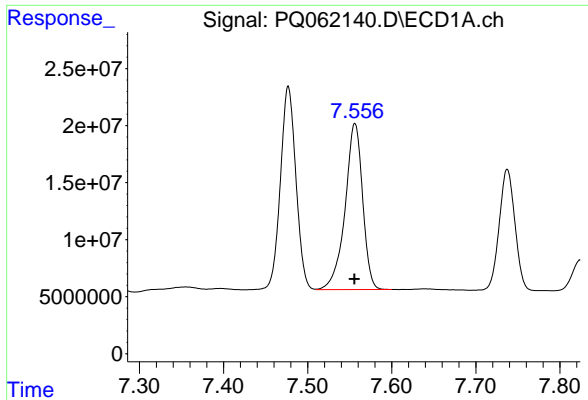
#41 AR-1268-1

R.T.: 7.477 min
 Delta R.T.: 0.000 min
 Response: 228676147
 Conc: 402.97 ng/ml



#41 AR-1268-1

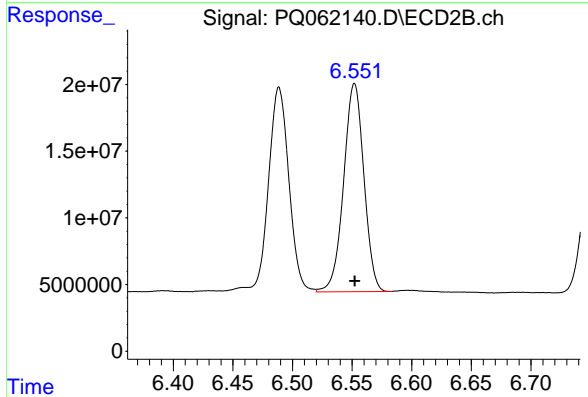
R.T.: 6.489 min
 Delta R.T.: 0.000 min
 Response: 185218297
 Conc: 393.63 ng/ml



#42 AR-1268-2

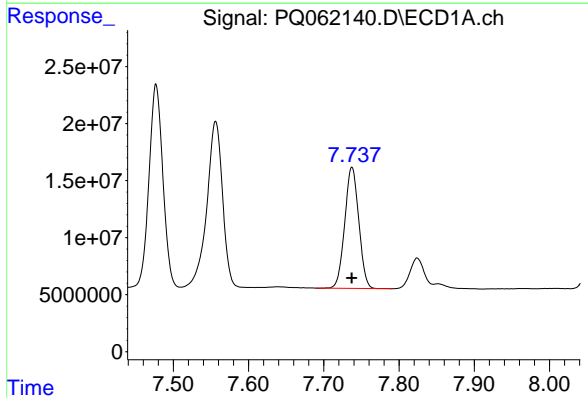
R.T.: 7.556 min
 Delta R.T.: 0.000 min
 Response: 211471489
 Conc: 414.75 ng/ml

Instrument :
 ECD_Q
 ClientSampleId :
 61R-19B



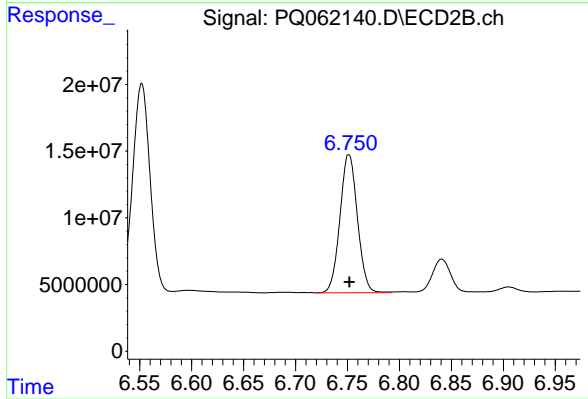
#42 AR-1268-2

R.T.: 6.552 min
 Delta R.T.: 0.000 min
 Response: 184765342
 Conc: 436.07 ng/ml



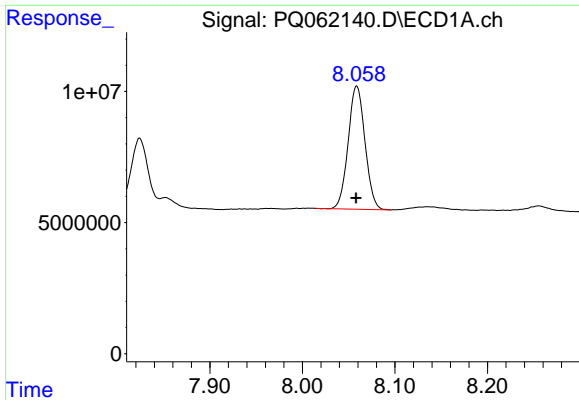
#43 AR-1268-3

R.T.: 7.737 min
 Delta R.T.: 0.000 min
 Response: 137777725
 Conc: 322.84 ng/ml



#43 AR-1268-3

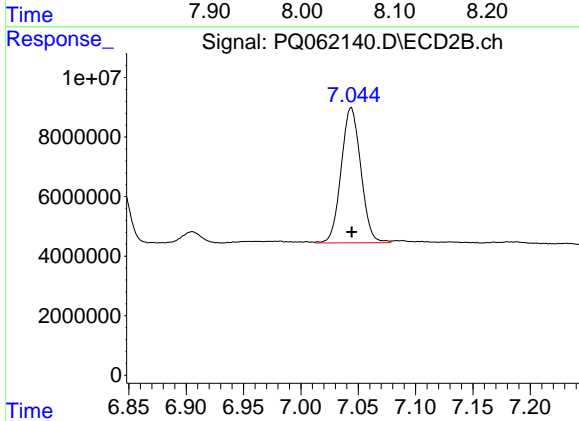
R.T.: 6.751 min
 Delta R.T.: 0.000 min
 Response: 121211676
 Conc: 329.09 ng/ml



#44 AR-1268-4

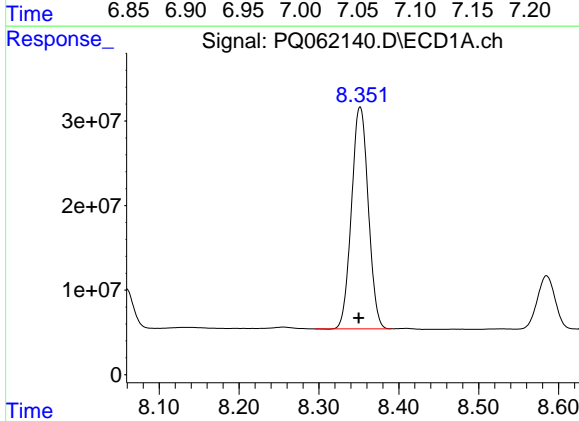
R.T.: 8.059 min
 Delta R.T.: 0.000 min
 Response: 59388036
 Conc: 324.55 ng/ml

Instrument :
 ECD_Q
 ClientSampleId :
 61R-19B



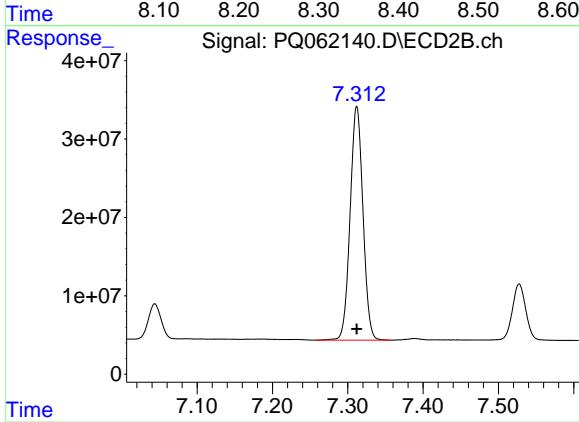
#44 AR-1268-4

R.T.: 7.044 min
 Delta R.T.: 0.000 min
 Response: 54129638
 Conc: 338.44 ng/ml



#45 AR-1268-5

R.T.: 8.352 min
 Delta R.T.: 0.002 min
 Response: 383115165
 Conc: 303.88 ng/ml



#45 AR-1268-5

R.T.: 7.312 min
 Delta R.T.: 0.000 min
 Response: 353700079
 Conc: 303.10 ng/ml