

Data Path : Z:\pestpcbsrv\HPCHEM1\ECD_Q\Data\PQ071223\
 Data File : PQ062152.D
 Signal(s) : Signal #1: ECD1A.ch Signal #2: ECD2B.ch
 Acq On : 12 Jul 2023 22:29
 Operator : YP\AJ
 Sample : I.BLK
 Misc :
 ALS Vial : 2 Sample Multiplier: 1

Instrument :
 ECD_Q
 ClientSampleId :
 I.BLK

Integration File signal 1: autoint1.e
 Integration File signal 2: autoint2.e
 Quant Time: Jul 13 04:52:57 2023
 Quant Method : Z:\pestpcbsrv\HPCHEM1\ECD_Q\Method\PQ070123.M
 Quant Title : GC EXTRACTABLES
 QLast Update : Tue Jul 04 05:32:27 2023
 Response via : Initial Calibration
 Integrator: ChemStation

Volume Inj. : 2 µl
 Signal #1 Phase : ZB-MR1 Signal #2 Phase: ZB-MR2
 Signal #1 Info : 30Mx0.32mmx 0.50µ Signal #2 Info : 30M x 0.32mm x 0.25µm

Compound	RT#1	RT#2	Resp#1	Resp#2	ng/ml	ng/ml

System Monitoring Compounds						
1) SA Tetrachlo...	3.404	2.759	111.0E6	63451666	22.755	25.289
2) SA Decachlor...	8.583	7.527	81331419	74171015	22.388	22.259

Target Compounds

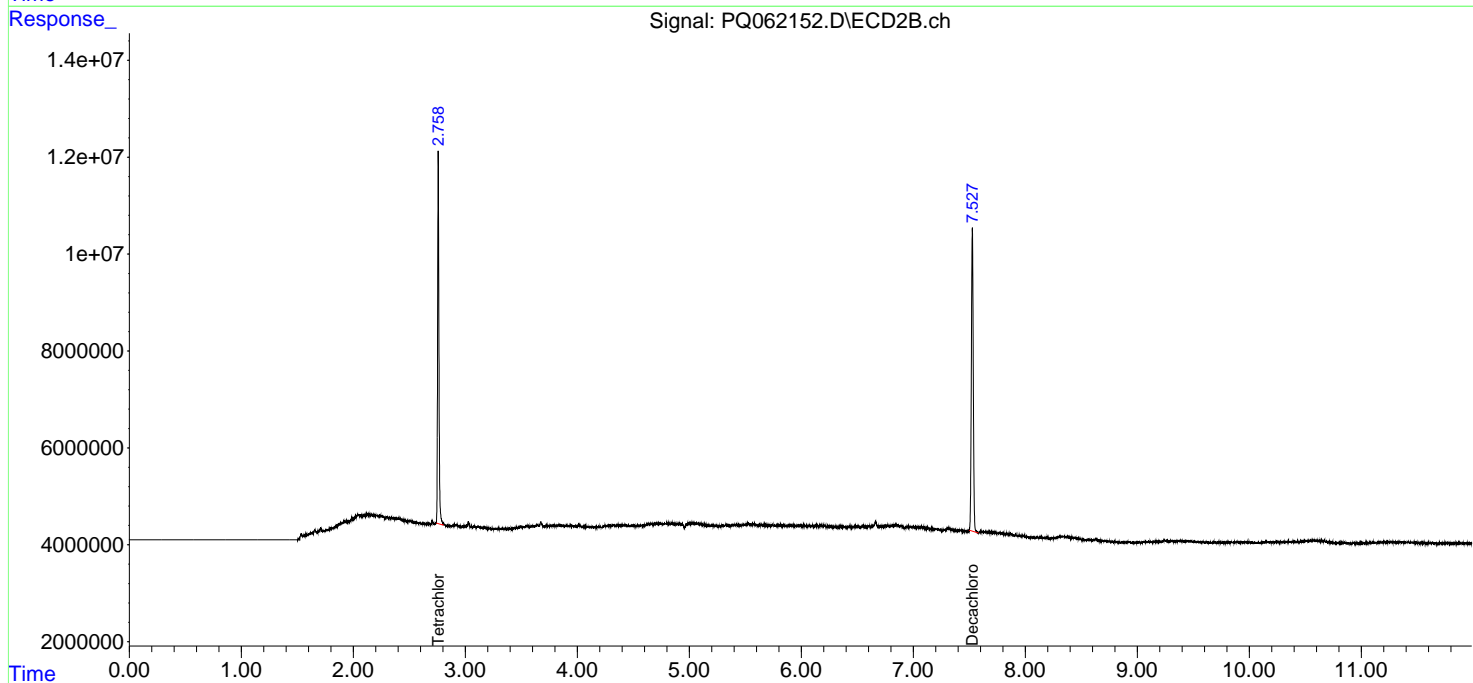
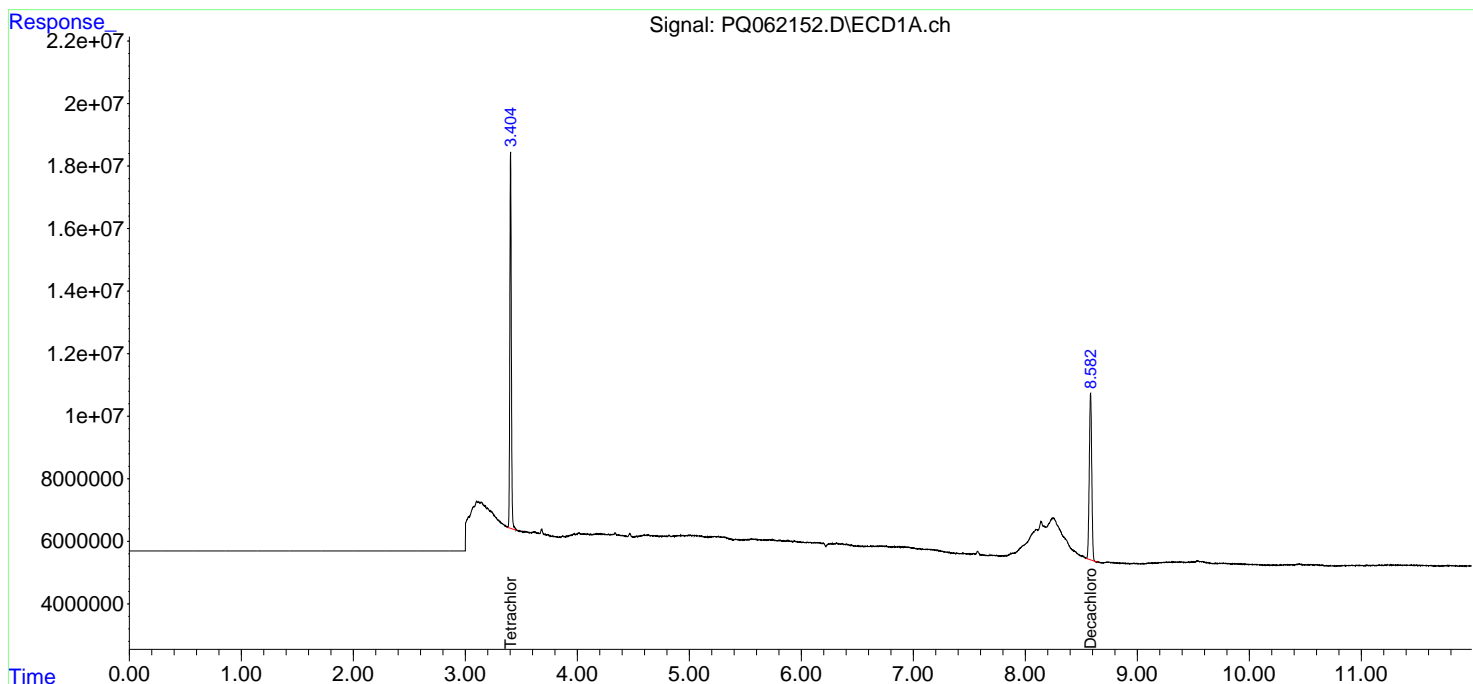
(f)=RT Delta > 1/2 Window (#)=Amounts differ by > 25% (m)=manual int.

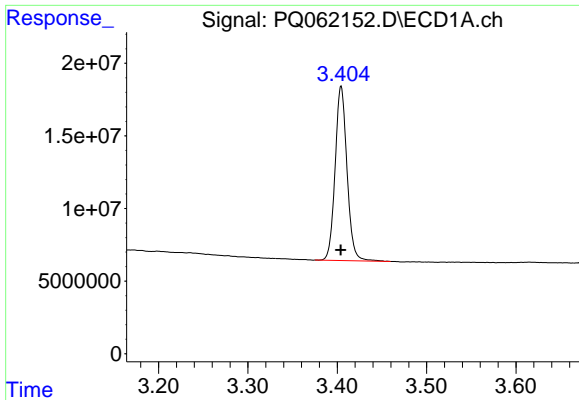
Data Path : Z:\pestpcbsrv\HPCHEM1\ECD_Q\Data\PQ071223\
 Data File : PQ062152.D
 Signal(s) : Signal #1: ECD1A.ch Signal #2: ECD2B.ch
 Acq On : 12 Jul 2023 22:29
 Operator : YP\AJ
 Sample : I.BLK
 Misc :
 ALS Vial : 2 Sample Multiplier: 1

Instrument :
 ECD_Q
 ClientSampleId :
 I.BLK

Integration File signal 1: autoint1.e
 Integration File signal 2: autoint2.e
 Quant Time: Jul 13 04:52:57 2023
 Quant Method : Z:\pestpcbsrv\HPCHEM1\ECD_Q\Method\PQ070123.M
 Quant Title : GC EXTRACTABLES
 QLast Update : Tue Jul 04 05:32:27 2023
 Response via : Initial Calibration
 Integrator: ChemStation

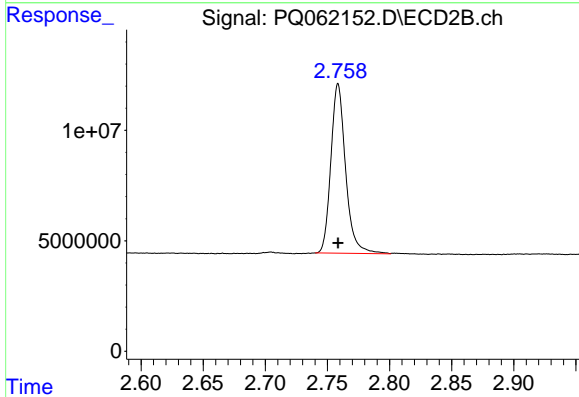
Volume Inj. : 2 µl
 Signal #1 Phase : ZB-MR1 Signal #2 Phase: ZB-MR2
 Signal #1 Info : 30Mx0.32mmx 0.50µ Signal #2 Info : 30M x 0.32mm x 0.25µm



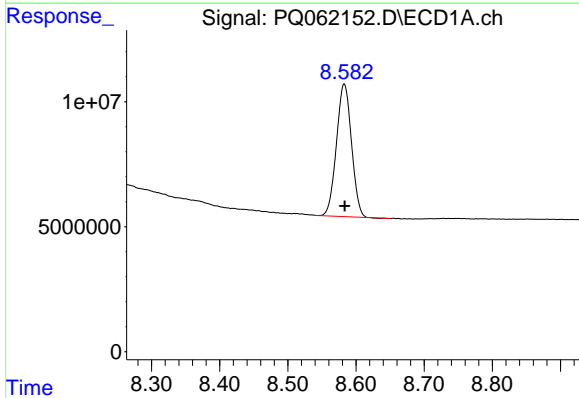


#1 Tetrachloro-m-xylene
 R.T.: 3.404 min
 Delta R.T.: 0.000 min
 Response: 111001587
 Conc: 22.75 ng/ml

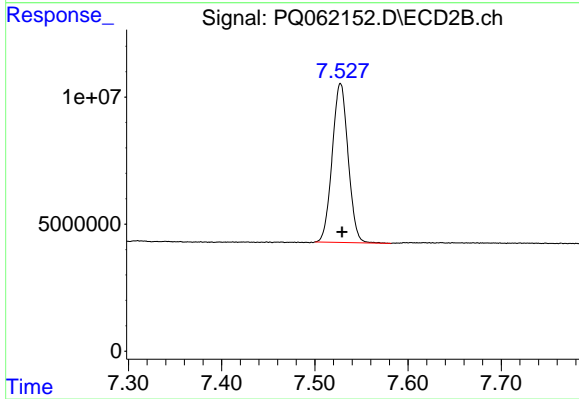
Instrument :
 ECD_Q
 ClientSampleId :
 I.BLK



#1 Tetrachloro-m-xylene
 R.T.: 2.759 min
 Delta R.T.: 0.000 min
 Response: 63451666
 Conc: 25.29 ng/ml



#2 Decachlorobiphenyl
 R.T.: 8.583 min
 Delta R.T.: -0.001 min
 Response: 81331419
 Conc: 22.39 ng/ml



#2 Decachlorobiphenyl
 R.T.: 7.527 min
 Delta R.T.: -0.002 min
 Response: 74171015
 Conc: 22.26 ng/ml