

Data Path : Z:\pestpcbsrv\HPCHEM1\ECD\_Q\Data\PQ071224\  
 Data File : PQ067283.D  
 Signal(s) : Signal #1: ECD1A.ch Signal #2: ECD2B.ch  
 Acq On : 12 Jul 2024 11:10  
 Operator : YP\AJ  
 Sample : AR1254CCC500  
 Misc :  
 ALS Vial : 6 Sample Multiplier: 1

**Instrument :**  
 ECD\_Q  
**ClientSampleId :**  
 AR1254CCC500

**Manual Integrations**  
**APPROVED**  
 Reviewed By :Yogesh Patel 07/15/2024  
 Supervised By :Ankita Jodhani 07/15/2024

Integration File signal 1: autoint1.e  
 Integration File signal 2: autoint2.e  
 Quant Time: Jul 12 13:06:09 2024  
 Quant Method : Z:\pestpcbsrv\HPCHEM1\ECD\_Q\Method\PQ062124.M  
 Quant Title : GC EXTRACTABLES  
 QLast Update : Fri Jun 21 17:20:22 2024  
 Response via : Initial Calibration  
 Integrator: ChemStation

Volume Inj. : 2 µl  
 Signal #1 Phase : ZB-MR1 Signal #2 Phase: ZB-MR2  
 Signal #1 Info : 30Mx0.32mmx 0.50µ Signal #2 Info : 30M x 0.32mm x 0.25µm

Compound	RT#1	RT#2	Resp#1	Resp#2	ng/ml	ng/ml
-----						
System Monitoring Compounds						
1) SA Tetrachlo...	3.456	2.823	301.1E6	309.1E6	48.605	51.122
2) SA Decachlor...	8.731	7.608	203.2E6	275.5E6	53.922m	45.582
Target Compounds						
26) L6 AR-1254-1	5.402	4.591	106.2E6	162.0E6	439.686	459.678
27) L6 AR-1254-2	5.623	4.738	165.5E6	145.1E6	442.608	465.511
28) L6 AR-1254-3	5.982	5.121	173.8E6	222.9E6	443.120	455.132
29) L6 AR-1254-4	6.273	5.348	119.7E6	129.6E6	436.909	436.689
30) L6 AR-1254-5	6.693	5.754	141.5E6	208.0E6	452.860m	470.431
-----						

(f)=RT Delta > 1/2 Window (#)=Amounts differ by > 25% (m)=manual int.

Data Path : Z:\pestpcbsrv\HPCHEM1\ECD\_Q\Data\PQ071224\  
 Data File : PQ067283.D  
 Signal(s) : Signal #1: ECD1A.ch Signal #2: ECD2B.ch  
 Acq On : 12 Jul 2024 11:10  
 Operator : YP\AJ  
 Sample : AR1254CCC500  
 Misc :  
 ALS Vial : 6 Sample Multiplier: 1

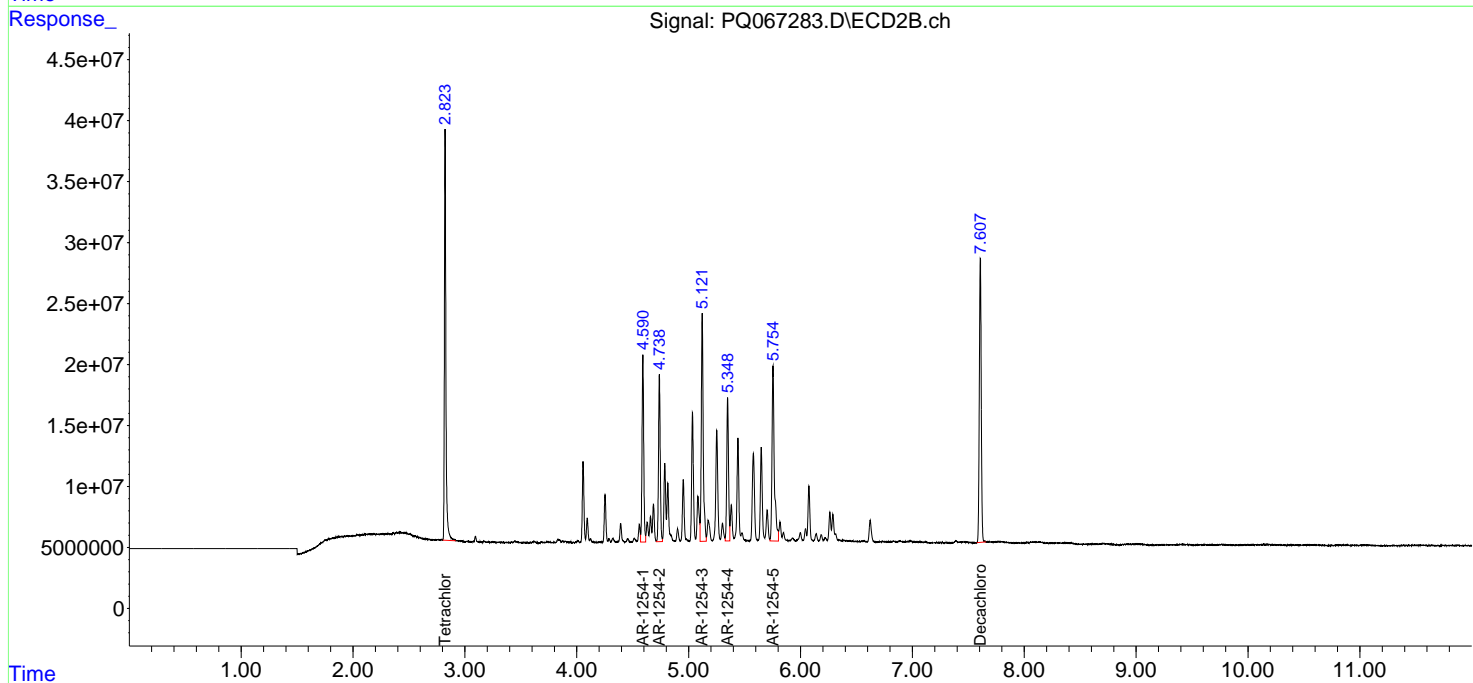
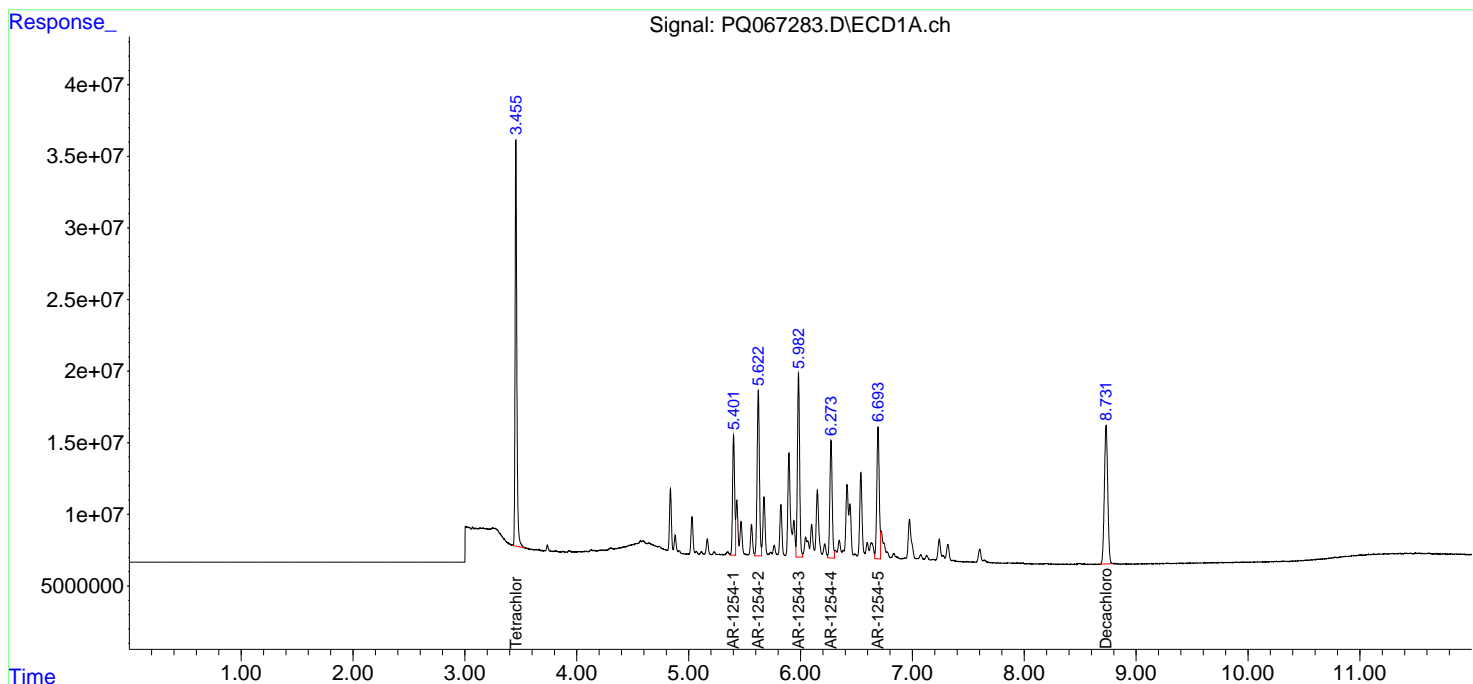
**Instrument :**  
 ECD\_Q  
**ClientSampleId :**  
 AR1254CCC500

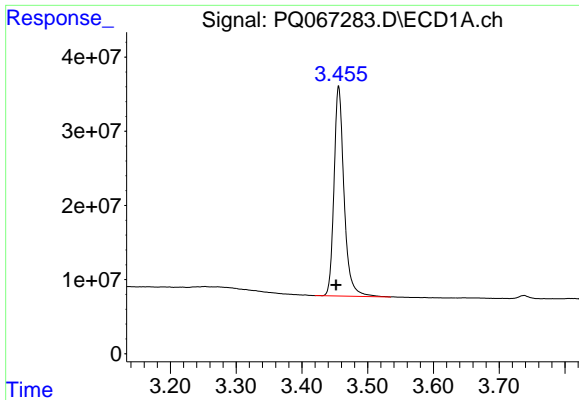
**Manual Integrations**  
**APPROVED**

Reviewed By :Yogesh Patel 07/15/2024  
 Supervised By :Ankita Jodhani 07/15/2024

Integration File signal 1: autoint1.e  
 Integration File signal 2: autoint2.e  
 Quant Time: Jul 12 13:06:09 2024  
 Quant Method : Z:\pestpcbsrv\HPCHEM1\ECD\_Q\Method\PQ062124.M  
 Quant Title : GC EXTRACTABLES  
 QLast Update : Fri Jun 21 17:20:22 2024  
 Response via : Initial Calibration  
 Integrator: ChemStation

Volume Inj. : 2 µl  
 Signal #1 Phase : ZB-MR1 Signal #2 Phase: ZB-MR2  
 Signal #1 Info : 30Mx0.32mmx 0.50µ Signal #2 Info : 30M x 0.32mm x 0.25µm





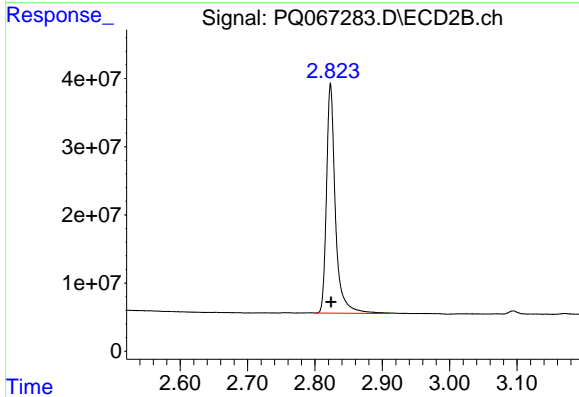
#1 Tetrachloro-m-xylene

R.T.: 3.456 min  
 Delta R.T.: 0.004 min  
 Response: 301115742  
 Conc: 48.60 ng/ml

Instrument :  
 ECD\_Q  
 ClientSampleId :  
 AR1254CCC500

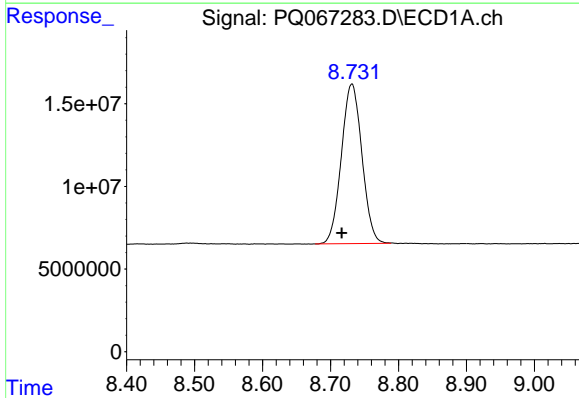
Manual Integrations  
 APPROVED

Reviewed By :Yogesh Patel 07/15/2024  
 Supervised By :Ankita Jodhani 07/15/2024



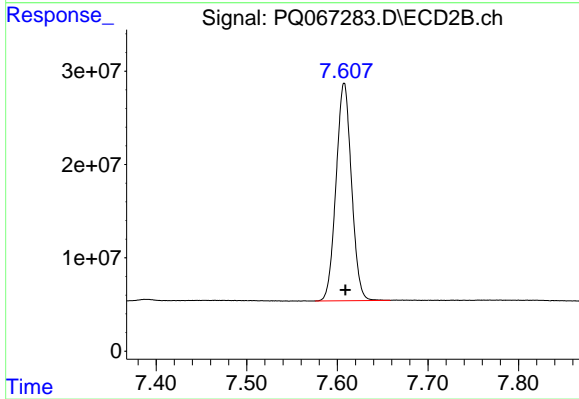
#1 Tetrachloro-m-xylene

R.T.: 2.823 min  
 Delta R.T.: 0.000 min  
 Response: 309063113  
 Conc: 51.12 ng/ml



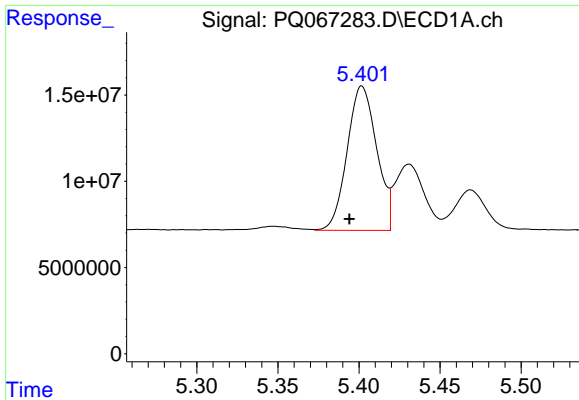
#2 Decachlorobiphenyl

R.T.: 8.731 min  
 Delta R.T.: 0.015 min  
 Response: 203189953  
 Conc: 53.92 ng/ml m



#2 Decachlorobiphenyl

R.T.: 7.608 min  
 Delta R.T.: -0.001 min  
 Response: 275527054  
 Conc: 45.58 ng/ml



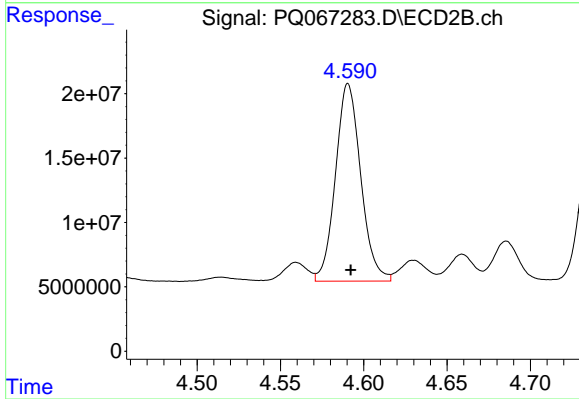
#26 AR-1254-1

R.T.: 5.402 min  
 Delta R.T.: 0.008 min  
 Response: 106226661  
 Conc: 439.69 ng/ml

Instrument :  
 ECD\_Q  
 ClientSampleId :  
 AR1254CCC500

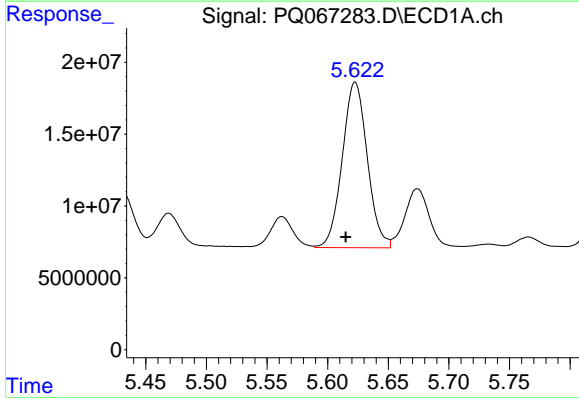
Manual Integrations  
 APPROVED

Reviewed By :Yogesh Patel 07/15/2024  
 Supervised By :Ankita Jodhani 07/15/2024



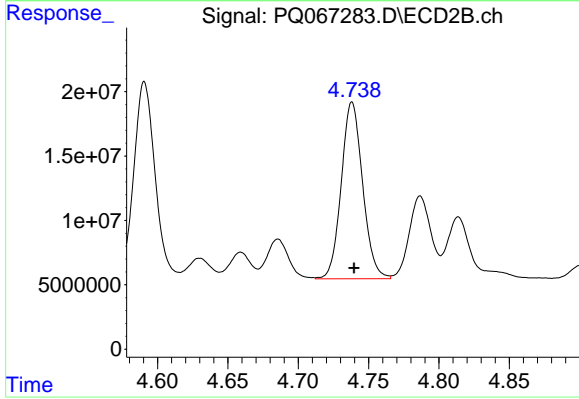
#26 AR-1254-1

R.T.: 4.591 min  
 Delta R.T.: -0.002 min  
 Response: 162025516  
 Conc: 459.68 ng/ml



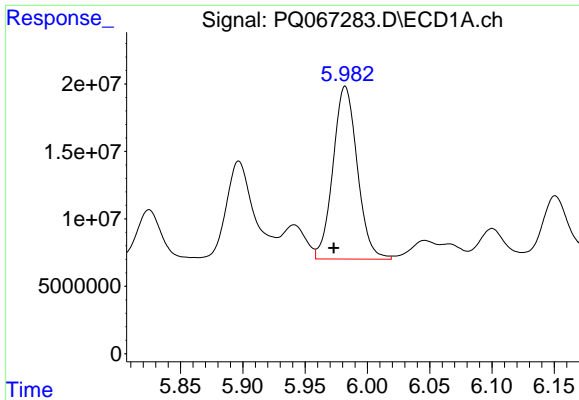
#27 AR-1254-2

R.T.: 5.623 min  
 Delta R.T.: 0.008 min  
 Response: 165512575  
 Conc: 442.61 ng/ml



#27 AR-1254-2

R.T.: 4.738 min  
 Delta R.T.: -0.001 min  
 Response: 145108809  
 Conc: 465.51 ng/ml



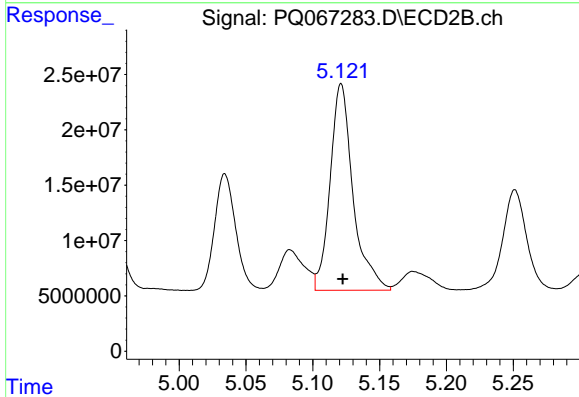
#28 AR-1254-3

R.T.: 5.982 min  
 Delta R.T.: 0.009 min  
 Response: 173770375  
 Conc: 443.12 ng/ml

Instrument :  
 ECD\_Q  
 ClientSampleId :  
 AR1254CCC500

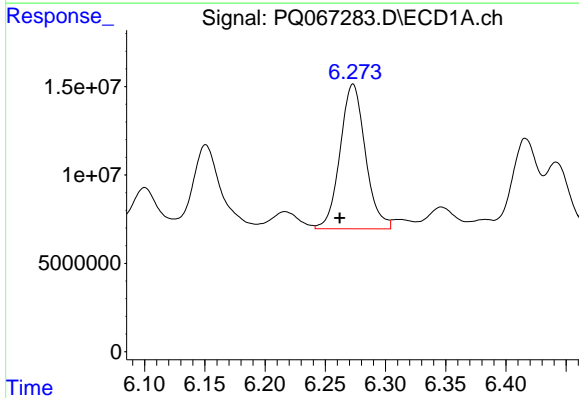
Manual Integrations  
 APPROVED

Reviewed By :Yogesh Patel 07/15/2024  
 Supervised By :Ankita Jodhani 07/15/2024



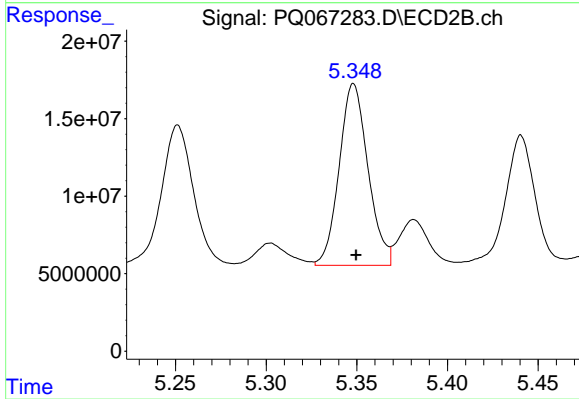
#28 AR-1254-3

R.T.: 5.121 min  
 Delta R.T.: -0.001 min  
 Response: 222926512  
 Conc: 455.13 ng/ml



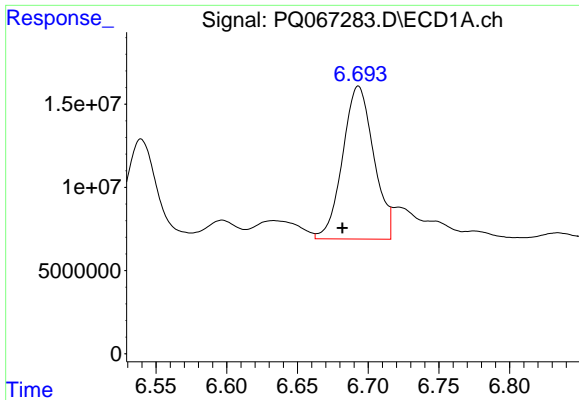
#29 AR-1254-4

R.T.: 6.273 min  
 Delta R.T.: 0.011 min  
 Response: 119650714  
 Conc: 436.91 ng/ml



#29 AR-1254-4

R.T.: 5.348 min  
 Delta R.T.: -0.001 min  
 Response: 129566032  
 Conc: 436.69 ng/ml



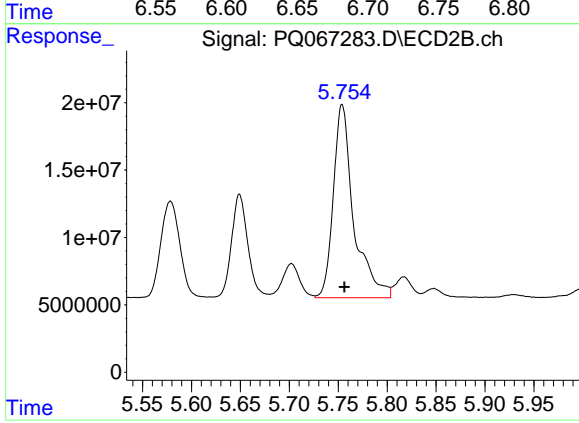
#30 AR-1254-5

R.T.: 6.693 min  
 Delta R.T.: 0.011 min  
 Response: 141482503  
 Conc: 452.86 ng/ml

Instrument :  
 ECD\_Q  
 ClientSampleId :  
 AR1254CCC500

Manual Integrations  
 APPROVED

Reviewed By :Yogesh Patel 07/15/2024  
 Supervised By :Ankita Jodhani 07/15/2024



#30 AR-1254-5

R.T.: 5.754 min  
 Delta R.T.: -0.002 min  
 Response: 208049488  
 Conc: 470.43 ng/ml