

Data Path : Z:\pestpcbsrv\HPCHEM1\ECD\_Q\Data\PQ071224\  
 Data File : PQ067317.D  
 Signal(s) : Signal #1: ECD1A.ch Signal #2: ECD2B.ch  
 Acq On : 12 Jul 2024 20:39  
 Operator : YP\AJ  
 Sample : P3224-31  
 Misc :  
 ALS Vial : 29 Sample Multiplier: 1

**Instrument :**  
 ECD\_Q  
**ClientSampleId :**  
 356STEVEN-14-16-17

Integration File signal 1: autoint1.e  
 Integration File signal 2: autoint2.e  
 Quant Time: Jul 13 00:20:27 2024  
 Quant Method : Z:\pestpcbsrv\HPCHEM1\ECD\_Q\Method\PQ062124.M  
 Quant Title : GC EXTRACTABLES  
 QLast Update : Fri Jun 21 17:20:22 2024  
 Response via : Initial Calibration  
 Integrator: ChemStation

Volume Inj. : 2 µl  
 Signal #1 Phase : ZB-MR1 Signal #2 Phase: ZB-MR2  
 Signal #1 Info : 30Mx0.32mmx 0.50µ Signal #2 Info : 30M x 0.32mm x 0.25µm

Compound	RT#1	RT#2	Resp#1	Resp#2	ng/ml	ng/ml
-----						
System Monitoring Compounds						
1) SA Tetrachlo...	3.451	2.825	154.4E6	64999526	24.918	10.751 #
2) SA Decachlor...	8.714	7.606	53172909	55033451	14.111	9.105 #
Target Compounds						
16) L4 AR-1242-1	4.563	3.834	5065.6E6	5119.8E6	31539.767	29190.233
17) L4 AR-1242-2	4.583	3.850	8312.4E6	7930.8E6	33528.681	31368.474
18) L4 AR-1242-3	4.641	4.011	5195.2E6	4703.2E6	33380.837	33619.181
19) L4 AR-1242-4	4.734	4.098	4677.0E6	3846.5E6	36740.722	29004.213
20) L4 AR-1242-5	5.461	4.597	5010.9E6	6716.6E6	38506.225	39407.692
-----						

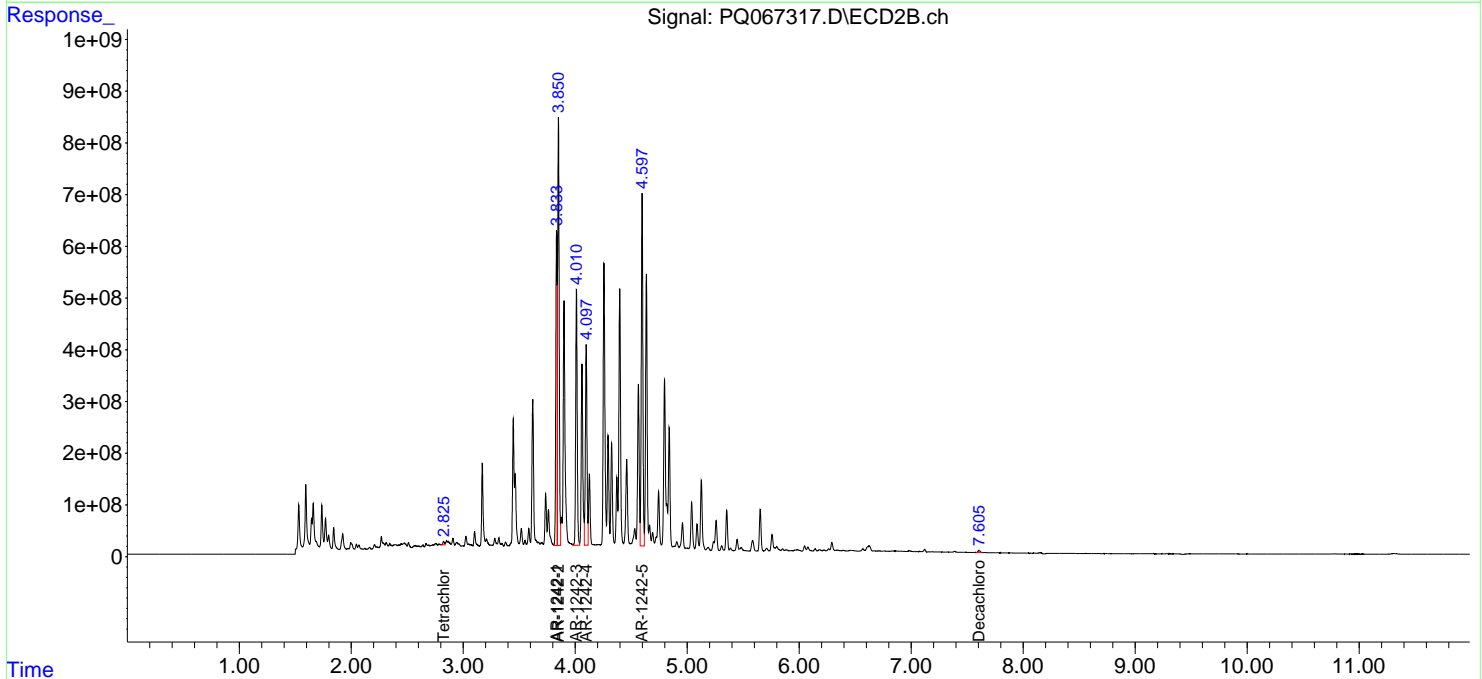
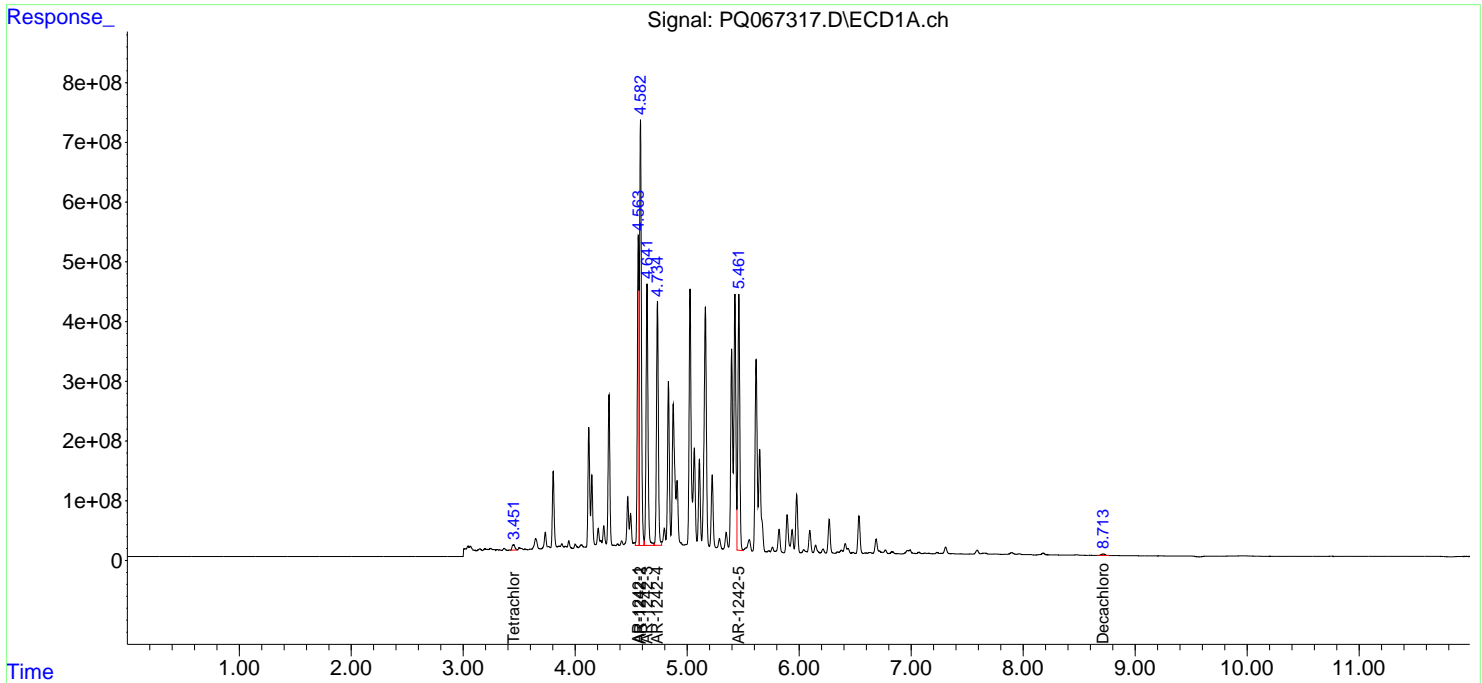
(f)=RT Delta > 1/2 Window (#)=Amounts differ by > 25% (m)=manual int.

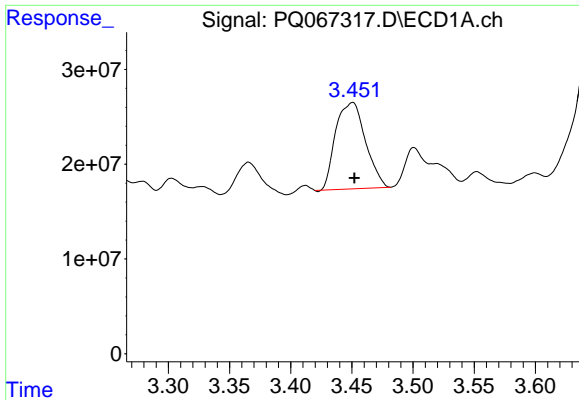
Data Path : Z:\pestpcbsrv\HPCHEM1\ECD\_Q\Data\PQ071224\  
 Data File : PQ067317.D  
 Signal(s) : Signal #1: ECD1A.ch Signal #2: ECD2B.ch  
 Acq On : 12 Jul 2024 20:39  
 Operator : YP\AJ  
 Sample : P3224-31  
 Misc :  
 ALS Vial : 29 Sample Multiplier: 1

Instrument :  
 ECD\_Q  
 ClientSampleId :  
 356STEVEN-14-16-17

Integration File signal 1: autoint1.e  
 Integration File signal 2: autoint2.e  
 Quant Time: Jul 13 00:20:27 2024  
 Quant Method : Z:\pestpcbsrv\HPCHEM1\ECD\_Q\Method\PQ062124.M  
 Quant Title : GC EXTRACTABLES  
 QLast Update : Fri Jun 21 17:20:22 2024  
 Response via : Initial Calibration  
 Integrator: ChemStation

Volume Inj. : 2 µl  
 Signal #1 Phase : ZB-MR1 Signal #2 Phase: ZB-MR2  
 Signal #1 Info : 30Mx0.32mmx 0.50µ Signal #2 Info : 30M x 0.32mm x 0.25µm

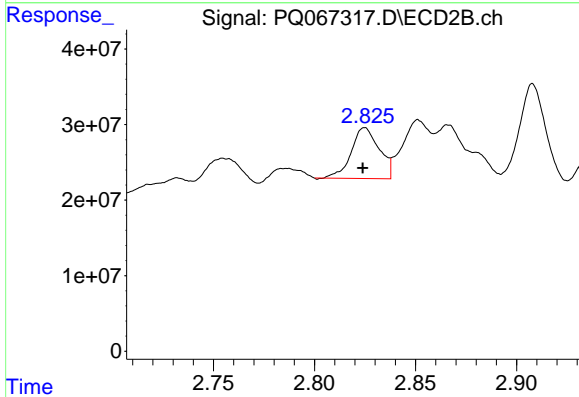




#1 Tetrachloro-m-xylene

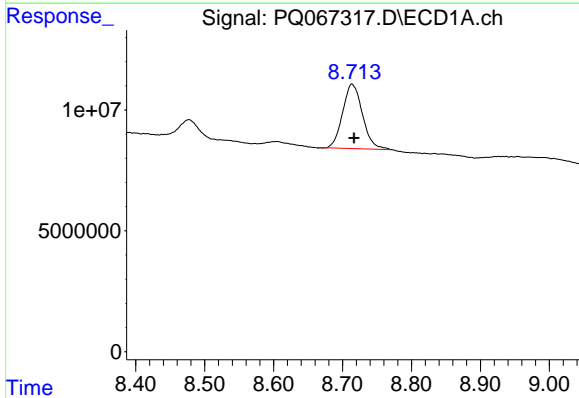
R.T.: 3.451 min  
 Delta R.T.: -0.001 min  
 Response: 154373715  
 Conc: 24.92 ng/ml

Instrument :  
 ECD\_Q  
 ClientSampleId :  
 356STEVEN-14-16-17



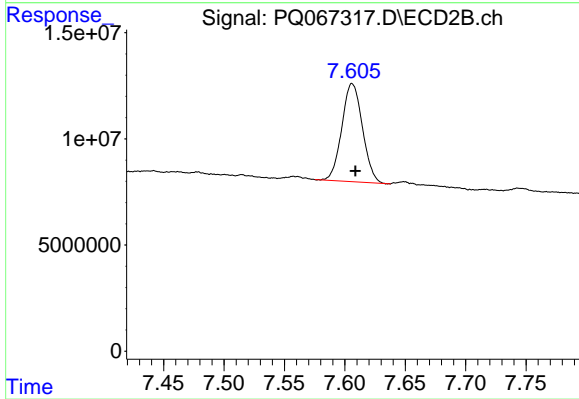
#1 Tetrachloro-m-xylene

R.T.: 2.825 min  
 Delta R.T.: 0.001 min  
 Response: 64999526  
 Conc: 10.75 ng/ml



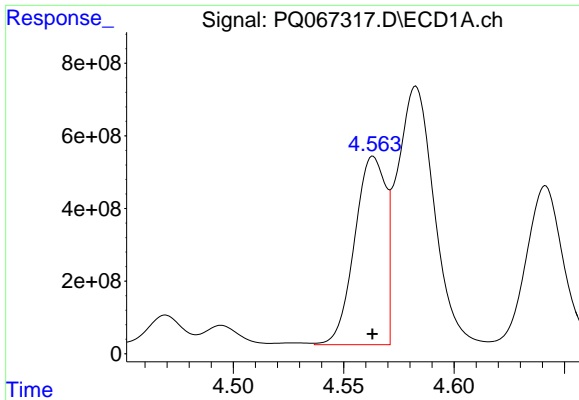
#2 Decachlorobiphenyl

R.T.: 8.714 min  
 Delta R.T.: -0.003 min  
 Response: 53172909  
 Conc: 14.11 ng/ml



#2 Decachlorobiphenyl

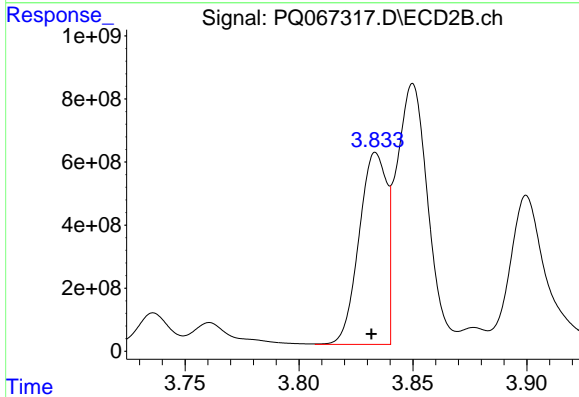
R.T.: 7.606 min  
 Delta R.T.: -0.003 min  
 Response: 55033451  
 Conc: 9.10 ng/ml



#16 AR-1242-1

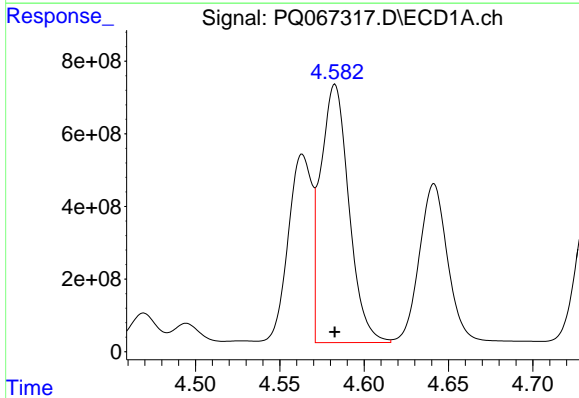
R.T.: 4.563 min  
 Delta R.T.: 0.000 min  
 Response: 5065614666  
 Conc: 31539.77 ng/ml

Instrument :  
 ECD\_Q  
 ClientSampleId :  
 356STEVEN-14-16-17



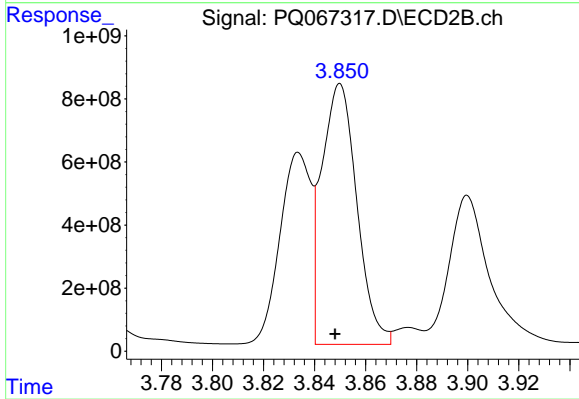
#16 AR-1242-1

R.T.: 3.834 min  
 Delta R.T.: 0.002 min  
 Response: 5119830104  
 Conc: 29190.23 ng/ml



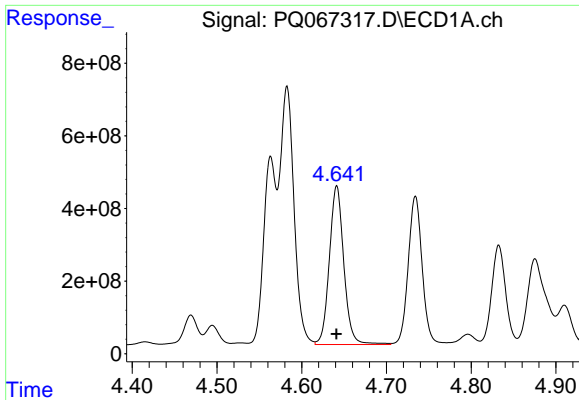
#17 AR-1242-2

R.T.: 4.583 min  
 Delta R.T.: 0.000 min  
 Response: 8312394879  
 Conc: 33528.68 ng/ml



#17 AR-1242-2

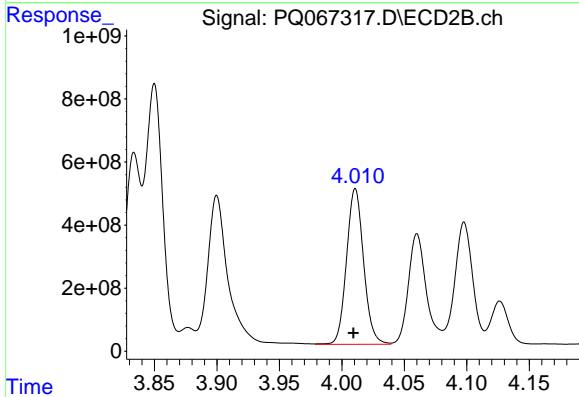
R.T.: 3.850 min  
 Delta R.T.: 0.002 min  
 Response: 7930793335  
 Conc: 31368.47 ng/ml



#18 AR-1242-3

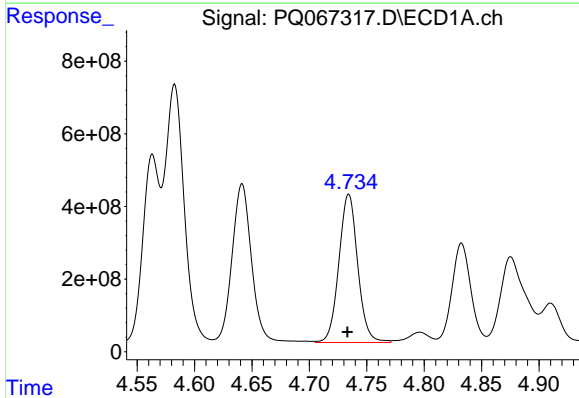
R.T.: 4.641 min  
 Delta R.T.: 0.000 min  
 Response: 5195196018  
 Conc: 33380.84 ng/ml

Instrument :  
 ECD\_Q  
 ClientSampleId :  
 356STEVEN-14-16-17



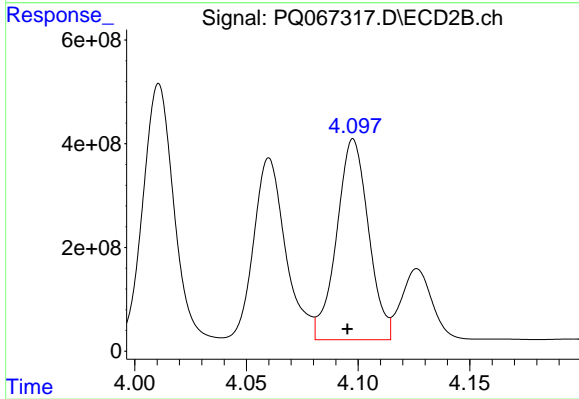
#18 AR-1242-3

R.T.: 4.011 min  
 Delta R.T.: 0.002 min  
 Response: 4703178226  
 Conc: 33619.18 ng/ml



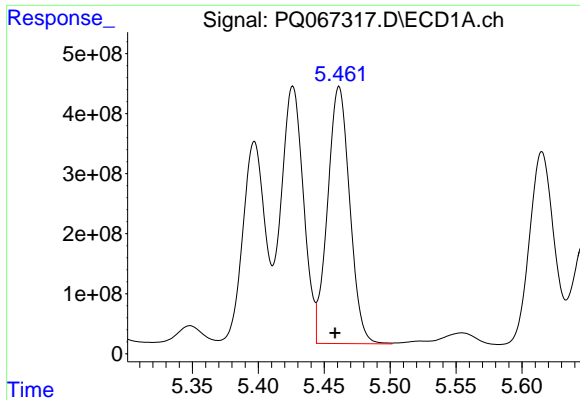
#19 AR-1242-4

R.T.: 4.734 min  
 Delta R.T.: 0.001 min  
 Response: 4676968343  
 Conc: 36740.72 ng/ml



#19 AR-1242-4

R.T.: 4.098 min  
 Delta R.T.: 0.003 min  
 Response: 3846534807  
 Conc: 29004.21 ng/ml



#20 AR-1242-5

R.T.: 5.461 min

Delta R.T.: 0.003 min

Response: 5010893521

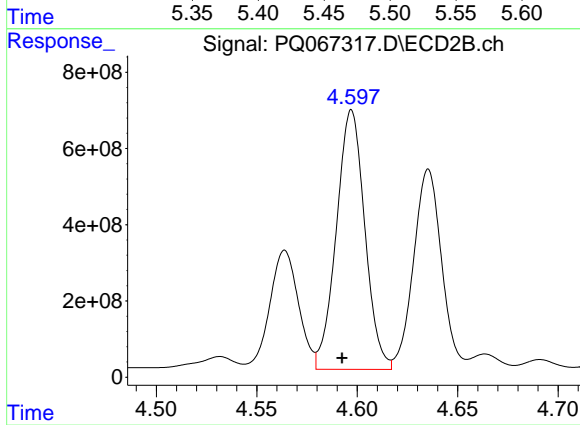
Conc: 38506.22 ng/

Instrument :

ECD\_Q

ClientSampleId :

356STEVEN-14-16-17



#20 AR-1242-5

R.T.: 4.597 min

Delta R.T.: 0.005 min

Response: 6716590789

Conc: 39407.69 ng/ml