

Data Path : Z:\pestpcbsrv\HPCHEM1\ECD\_Q\Data\PQ071224\  
 Data File : PQ067327.D  
 Signal(s) : Signal #1: ECD1A.ch Signal #2: ECD2B.ch  
 Acq On : 12 Jul 2024 23:49  
 Operator : YP\AJ  
 Sample : AR1254CCC500  
 Misc :  
 ALS Vial : 6 Sample Multiplier: 1

Instrument :  
 ECD\_Q  
 ClientSampleId :  
 AR1254CCC500

Integration File signal 1: autoint1.e  
 Integration File signal 2: autoint2.e  
 Quant Time: Jul 13 00:29:26 2024  
 Quant Method : Z:\pestpcbsrv\HPCHEM1\ECD\_Q\Method\PQ062124.M  
 Quant Title : GC EXTRACTABLES  
 QLast Update : Fri Jun 21 17:20:22 2024  
 Response via : Initial Calibration  
 Integrator: ChemStation

Volume Inj. : 2 µl  
 Signal #1 Phase : ZB-MR1 Signal #2 Phase: ZB-MR2  
 Signal #1 Info : 30Mx0.32mmx 0.50µ Signal #2 Info : 30M x 0.32mm x 0.25µm

Compound	RT#1	RT#2	Resp#1	Resp#2	ng/ml	ng/ml
-----						
System Monitoring Compounds						
1) SA Tetrachlo...	3.451	2.823	302.0E6	292.4E6	48.752	48.369
2) SA Decachlor...	8.712	7.605	200.5E6	267.5E6	53.195	44.258
Target Compounds						
26) L6 AR-1254-1	5.394	4.590	107.5E6	156.5E6	444.892	444.105
27) L6 AR-1254-2	5.615	4.738	164.9E6	139.8E6	441.062	448.519
28) L6 AR-1254-3	5.974	5.121	149.3E6	217.6E6	380.654	444.344
29) L6 AR-1254-4	6.264	5.348	111.9E6	136.0E6	408.490	458.293
30) L6 AR-1254-5	6.683	5.753	138.5E6	204.7E6	443.473	462.787
-----						

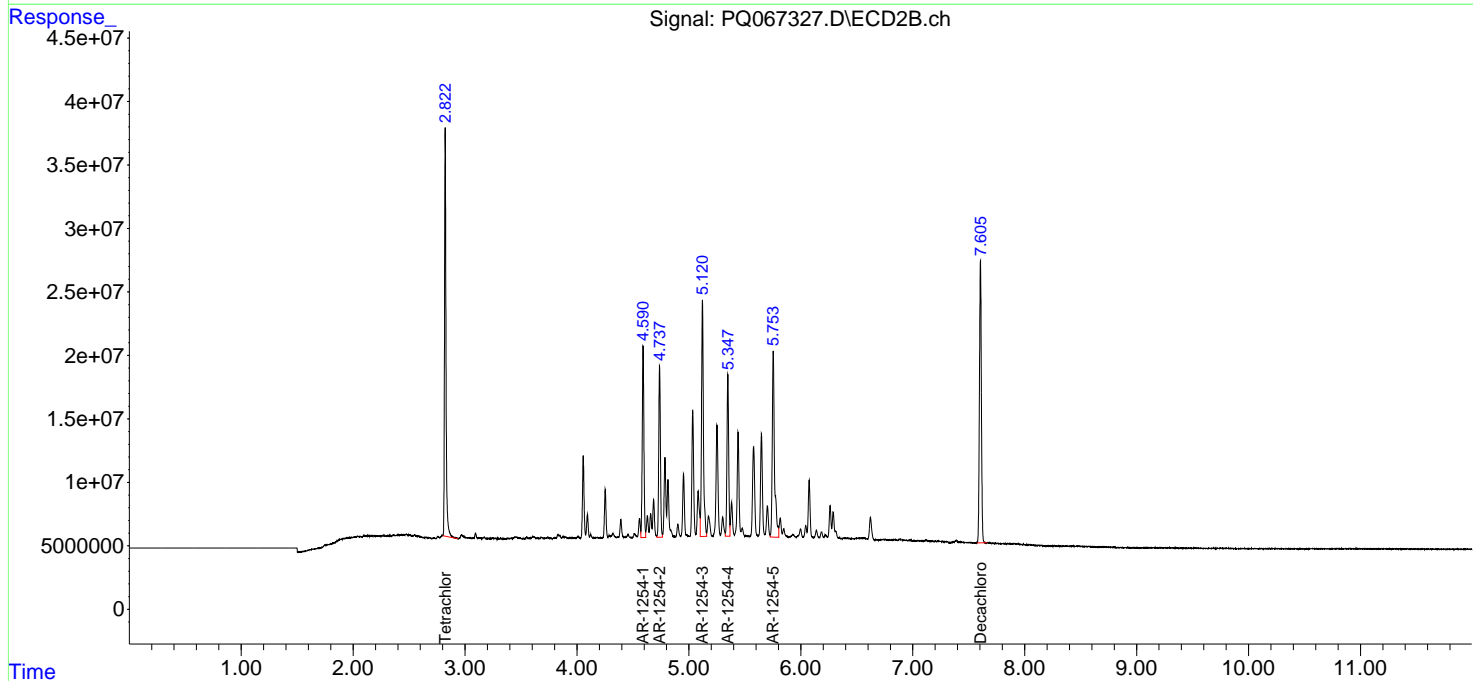
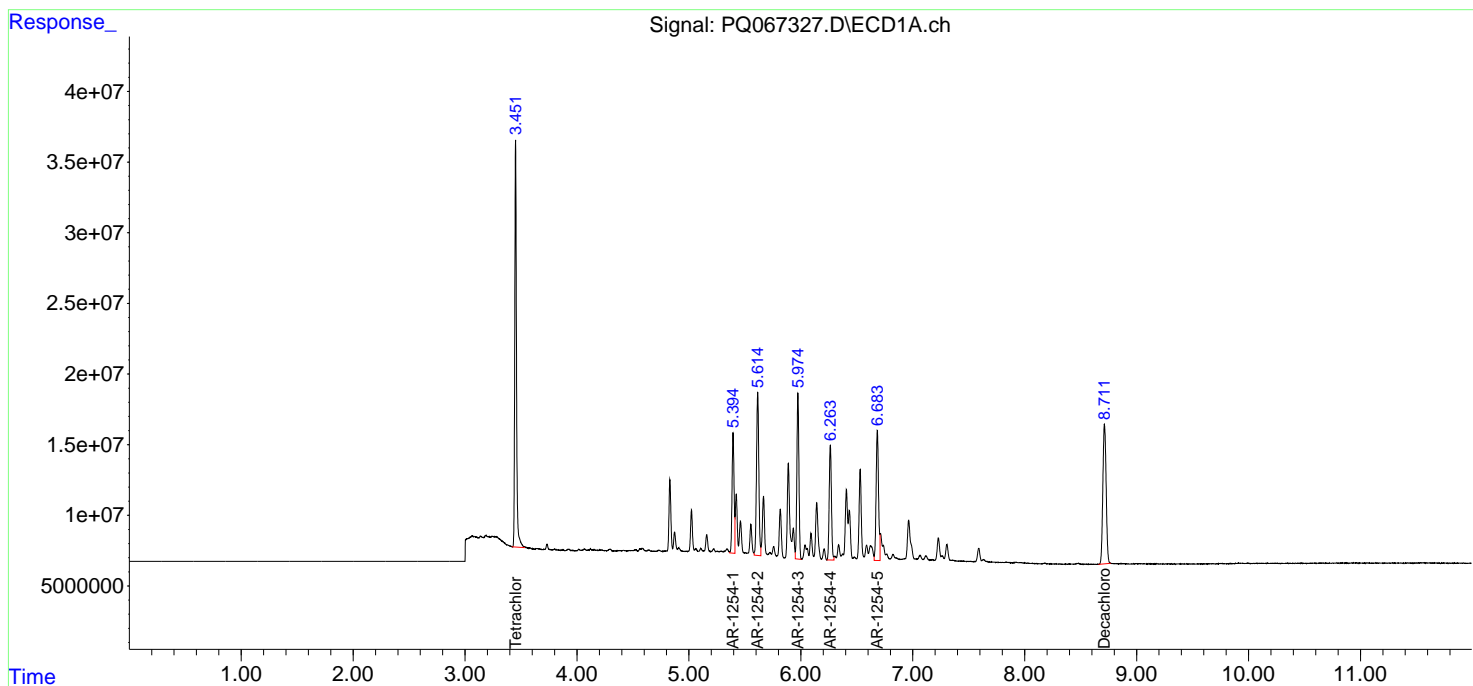
(f)=RT Delta > 1/2 Window (#)=Amounts differ by > 25% (m)=manual int.

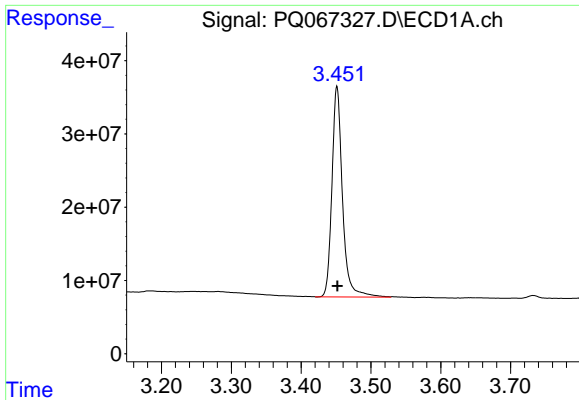
Data Path : Z:\pestpcbsrv\HPCHEM1\ECD\_Q\Data\PQ071224\  
 Data File : PQ067327.D  
 Signal(s) : Signal #1: ECD1A.ch Signal #2: ECD2B.ch  
 Acq On : 12 Jul 2024 23:49  
 Operator : YP\AJ  
 Sample : AR1254CCC500  
 Misc :  
 ALS Vial : 6 Sample Multiplier: 1

Instrument :  
 ECD\_Q  
 ClientSampleId :  
 AR1254CCC500

Integration File signal 1: autoint1.e  
 Integration File signal 2: autoint2.e  
 Quant Time: Jul 13 00:29:26 2024  
 Quant Method : Z:\pestpcbsrv\HPCHEM1\ECD\_Q\Method\PQ062124.M  
 Quant Title : GC EXTRACTABLES  
 QLast Update : Fri Jun 21 17:20:22 2024  
 Response via : Initial Calibration  
 Integrator: ChemStation

Volume Inj. : 2 µl  
 Signal #1 Phase : ZB-MR1 Signal #2 Phase: ZB-MR2  
 Signal #1 Info : 30Mx0.32mmx 0.50µ Signal #2 Info : 30M x 0.32mm x 0.25µm

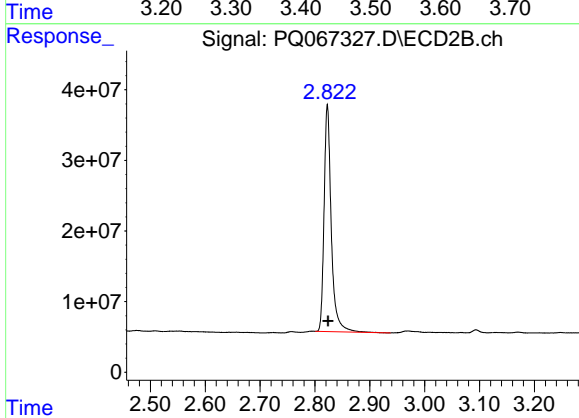




#1 Tetrachloro-m-xylene

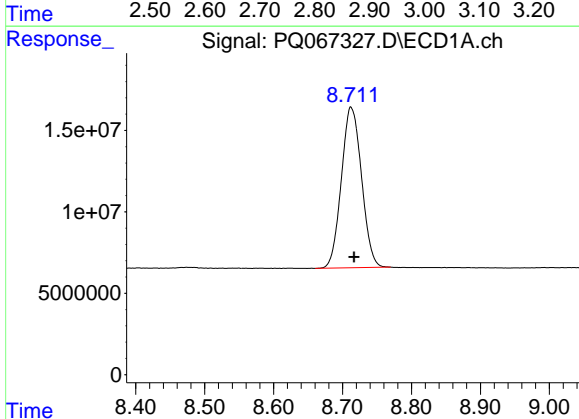
R.T.: 3.451 min  
 Delta R.T.: 0.000 min  
 Response: 302029407  
 Conc: 48.75 ng/ml

Instrument :  
 ECD\_Q  
 ClientSampleId :  
 AR1254CCC500



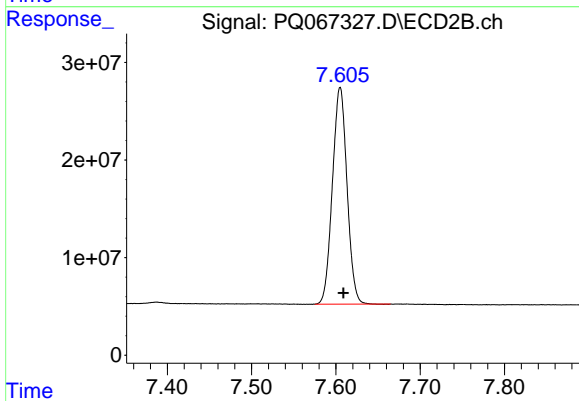
#1 Tetrachloro-m-xylene

R.T.: 2.823 min  
 Delta R.T.: -0.001 min  
 Response: 292421903  
 Conc: 48.37 ng/ml



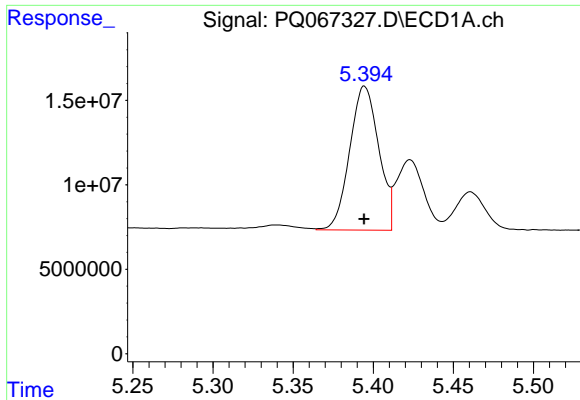
#2 Decachlorobiphenyl

R.T.: 8.712 min  
 Delta R.T.: -0.005 min  
 Response: 200450689  
 Conc: 53.19 ng/ml



#2 Decachlorobiphenyl

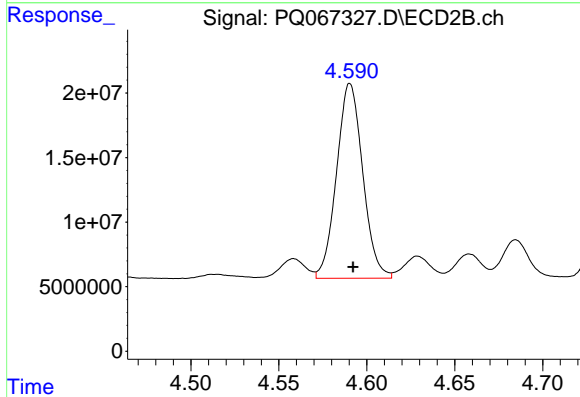
R.T.: 7.605 min  
 Delta R.T.: -0.004 min  
 Response: 267524349  
 Conc: 44.26 ng/ml



#26 AR-1254-1

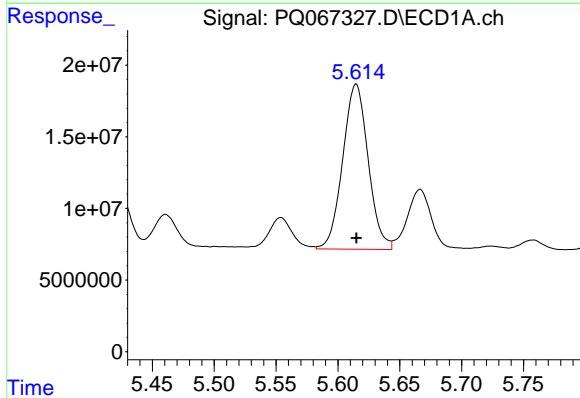
R.T.: 5.394 min  
 Delta R.T.: 0.000 min  
 Response: 107484397  
 Conc: 444.89 ng/ml

Instrument :  
 ECD\_Q  
 ClientSampleId :  
 AR1254CCC500



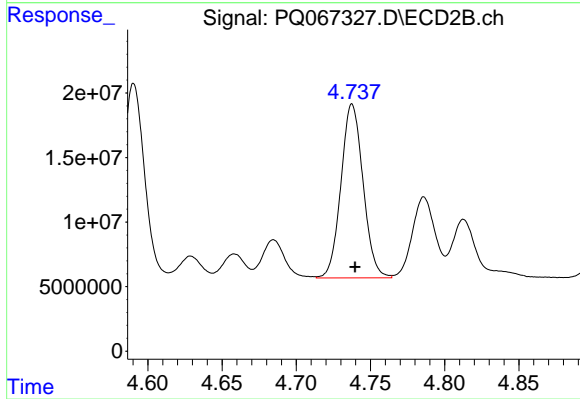
#26 AR-1254-1

R.T.: 4.590 min  
 Delta R.T.: -0.002 min  
 Response: 156536636  
 Conc: 444.11 ng/ml



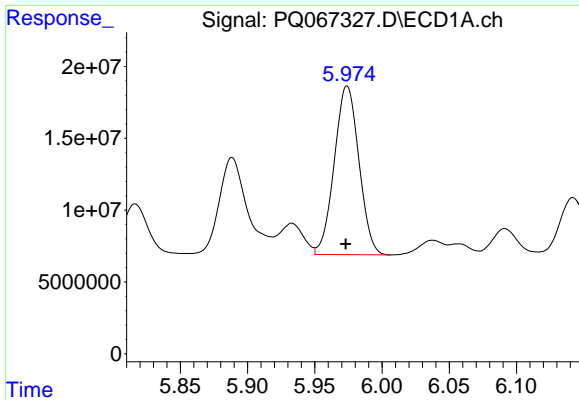
#27 AR-1254-2

R.T.: 5.615 min  
 Delta R.T.: 0.000 min  
 Response: 164934337  
 Conc: 441.06 ng/ml



#27 AR-1254-2

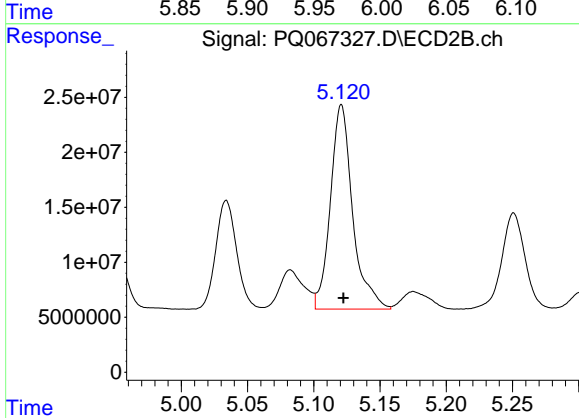
R.T.: 4.738 min  
 Delta R.T.: -0.002 min  
 Response: 139812145  
 Conc: 448.52 ng/ml



#28 AR-1254-3

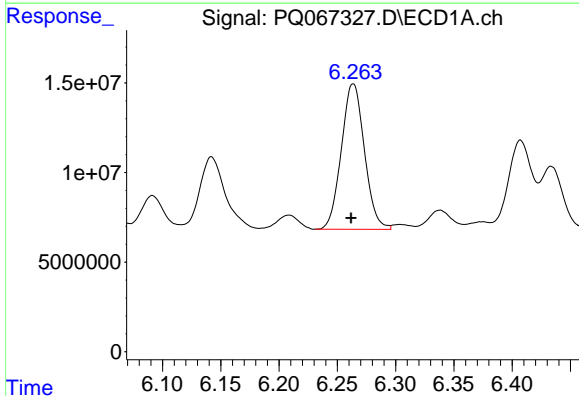
R.T.: 5.974 min  
Delta R.T.: 0.000 min  
Response: 149274232  
Conc: 380.65 ng/ml

Instrument :  
ECD\_Q  
ClientSampleId :  
AR1254CCC500



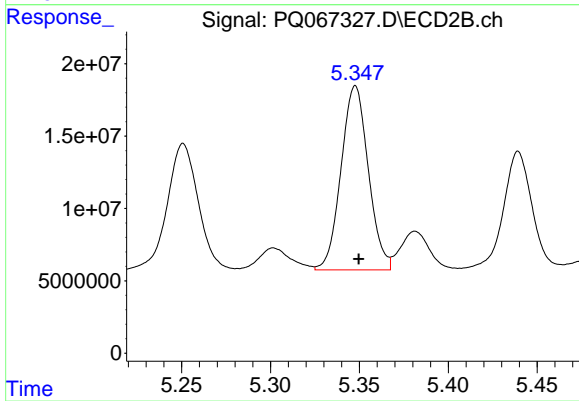
#28 AR-1254-3

R.T.: 5.121 min  
Delta R.T.: -0.002 min  
Response: 217642611  
Conc: 444.34 ng/ml



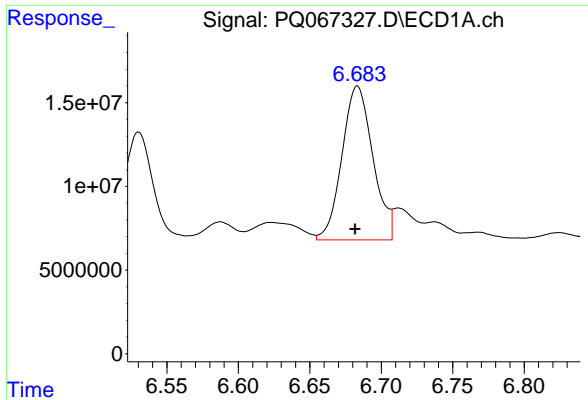
#29 AR-1254-4

R.T.: 6.264 min  
Delta R.T.: 0.002 min  
Response: 111868192  
Conc: 408.49 ng/ml



#29 AR-1254-4

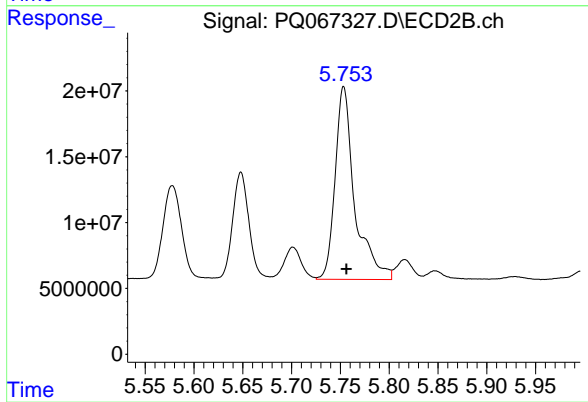
R.T.: 5.348 min  
Delta R.T.: -0.002 min  
Response: 135975873  
Conc: 458.29 ng/ml



#30 AR-1254-5

R.T.: 6.683 min  
Delta R.T.: 0.002 min  
Response: 138549685  
Conc: 443.47 ng/ml

Instrument :  
ECD\_Q  
ClientSampleId :  
AR1254CCC500



#30 AR-1254-5

R.T.: 5.753 min  
Delta R.T.: -0.003 min  
Response: 204668748  
Conc: 462.79 ng/ml