

Data Path : Z:\pestpcbsrv\HPCHEM1\ECD_Q\Data\PQ071322\
 Data File : PQ058574.D
 Signal(s) : Signal #1: ECD1A.ch Signal #2: ECD2B.ch
 Acq On : 13 Jul 2022 12:47
 Operator : YP\AJ
 Sample : AR1660CCC400
 Misc :
 ALS Vial : 3 Sample Multiplier: 1

Instrument :
 ECD_Q
 ClientSampleId :

Integration File signal 1: autoint1.e
 Integration File signal 2: autoint2.e
 Quant Time: Jul 14 00:21:01 2022
 Quant Method : Z:\pestpcbsrv\HPCHEM1\ECD_Q\Method\PQ071222CLP.M
 Quant Title : GC EXTRACTABLES
 QLast Update : Wed Jul 13 07:04:45 2022
 Response via : Initial Calibration
 Integrator: ChemStation

Volume Inj. : 1 µl
 Signal #1 Phase : ZB MR1 Signal #2 Phase: ZB MR2
 Signal #1 Info : 30Mx0.32mmx 0.5µm Signal #2 Info : 30M x 0.32mm x 0.25µm

Compound	RT#1	RT#2	Resp#1	Resp#2	ng/ml	ng/ml

System Monitoring Compounds						
1) SA Tetrachlo...	4.689	4.049	143.1E6	105.7E6	20.344	18.899
2) SA Decachlor...	10.604	9.176	222.3E6	128.4E6	39.734	38.772
Target Compounds						
3) L1 AR-1016-1	5.871	5.148	58696600	58839648	388.257	376.928
4) L1 AR-1016-2	5.894	5.168	101.8E6	86761318	390.958	386.736
5) L1 AR-1016-3	5.956	5.348	69584067	42541045	430.923	385.011
6) L1 AR-1016-4	6.057	5.386	56708552	36536760	421.188	383.911
7) L1 AR-1016-5	6.350	5.604	47055159	44317840	401.083	379.317
8) L2 AR-1221-1	4.895	4.262	8318510	5192237	106.284	87.466
9) L2 AR-1221-2	4.989	4.352	10073620	7069433	183.689	172.557
10) L2 AR-1221-3	5.068	4.429	40483745	32891453	231.400	227.752
11) L3 AR-1232-1	5.068	4.429	40483745	32891453	255.698	249.461
12) L3 AR-1232-2	5.602	5.168	51197484	86761318	667.723	740.494
13) L3 AR-1232-3	5.894	5.348	101.8E6	42541045	724.116	775.395
14) L3 AR-1232-4	6.057	5.429	56708552	44232505	799.998	840.944
15) L3 AR-1232-5	6.142	5.604	41022347	44317840	906.805	777.607
16) L4 AR-1242-1	5.871	5.148	58696600	58839648	425.763	424.441
17) L4 AR-1242-2	5.894	5.168	101.8E6	86761318	423.379	433.871
18) L4 AR-1242-3	5.956	5.348	69584067	42541045	438.095	430.645
19) L4 AR-1242-4	6.057	5.429	56708552	44232505	431.119	435.199
20) L4 AR-1242-5	6.796	5.957	7768813	31537562	68.164	270.185 #
21) L5 AR-1248-1	5.871	5.148	58696600	58839648	499.426	508.323
22) L5 AR-1248-2	6.142	5.386	41022347	36536760	243.665	219.103
23) L5 AR-1248-3	6.350	5.429	47055159	44232505	232.783	256.028
24) L5 AR-1248-4	6.754	5.604	7084211	44317840	35.752	223.451 #
25) L5 AR-1248-5	6.796	5.998	7768813	5124860	36.742	28.876
26) L6 AR-1254-1	6.727	5.957	28823787	31537562	138.426	104.306
27) L6 AR-1254-2	6.944	6.102	29381369	29301589	94.397	112.721
28) L6 AR-1254-3	7.316	6.523	18313586	66079403	51.086	164.985 #
29) L6 AR-1254-4	7.602	6.737	11225811	6258133	51.722	24.436 #
30) L6 AR-1254-5	8.022	7.157	94851760	89548580	364.407	293.555
31) L7 AR-1260-1	7.477	6.640	68233997	76115167	387.476	380.252
32) L7 AR-1260-2	7.734	6.825	74213278	88420815	354.376	379.916
33) L7 AR-1260-3	8.022	6.984	94851760	80641526	358.683	376.945
34) L7 AR-1260-4	8.332	7.456	77812243	66593472	382.501	376.789
35) L7 AR-1260-5	8.673	7.694	168.4E6	150.9E6	382.003	379.252
36) L8 AR-1262-1	8.094	7.157	65156793	89548580	199.836	555.350 #
37) L8 AR-1262-2	8.673	7.694	168.4E6	150.9E6	263.152	270.003
38) L8 AR-1262-3	9.001	7.979	48652869	33651452	148.867	154.486
39) L8 AR-1262-4	9.097	8.044	39740274	107.3E6	163.575	268.935 #
40) L8 AR-1262-5	9.805	8.568	55934069	35472072	201.058	223.662
41) L9 AR-1268-1	9.001	7.979	48652869	33651452	46.915	43.300

Data Path : Z:\pestpcbsrv\HPCHEM1\ECD_Q\Data\PQ071322\
 Data File : PQ058574.D
 Signal(s) : Signal #1: ECD1A.ch Signal #2: ECD2B.ch
 Acq On : 13 Jul 2022 12:47
 Operator : YP\AJ
 Sample : AR1660CCC400
 Misc :
 ALS Vial : 3 Sample Multiplier: 1

Instrument :
 ECD_Q
 ClientSampleId :

Integration File signal 1: autoint1.e
 Integration File signal 2: autoint2.e
 Quant Time: Jul 14 00:21:01 2022
 Quant Method : Z:\pestpcbsrv\HPCHEM1\ECD_Q\Method\PQ071222CLP.M
 Quant Title : GC EXTRACTABLES
 QLast Update : Wed Jul 13 07:04:45 2022
 Response via : Initial Calibration
 Integrator: ChemStation

Volume Inj. : 1 µl
 Signal #1 Phase : ZB MR1 Signal #2 Phase: ZB MR2
 Signal #1 Info : 30Mx0.32mmx 0.5µm Signal #2 Info : 30M x 0.32mm x 0.25µm

	Compound	RT#1	RT#2	Resp#1	Resp#2	ng/ml	ng/ml
42)	L9 AR-1268-2	9.097	8.044	39740274	107.3E6	36.590	151.927 #
43)	L9 AR-1268-3	9.340	8.261	3511184	1491159	3.558	2.431 #
44)	L9 AR-1268-4	9.805	8.568	55934069	35472072	168.597	166.634
45)	L9 AR-1268-5	10.246	8.891	20812504	9911026	6.908	5.386

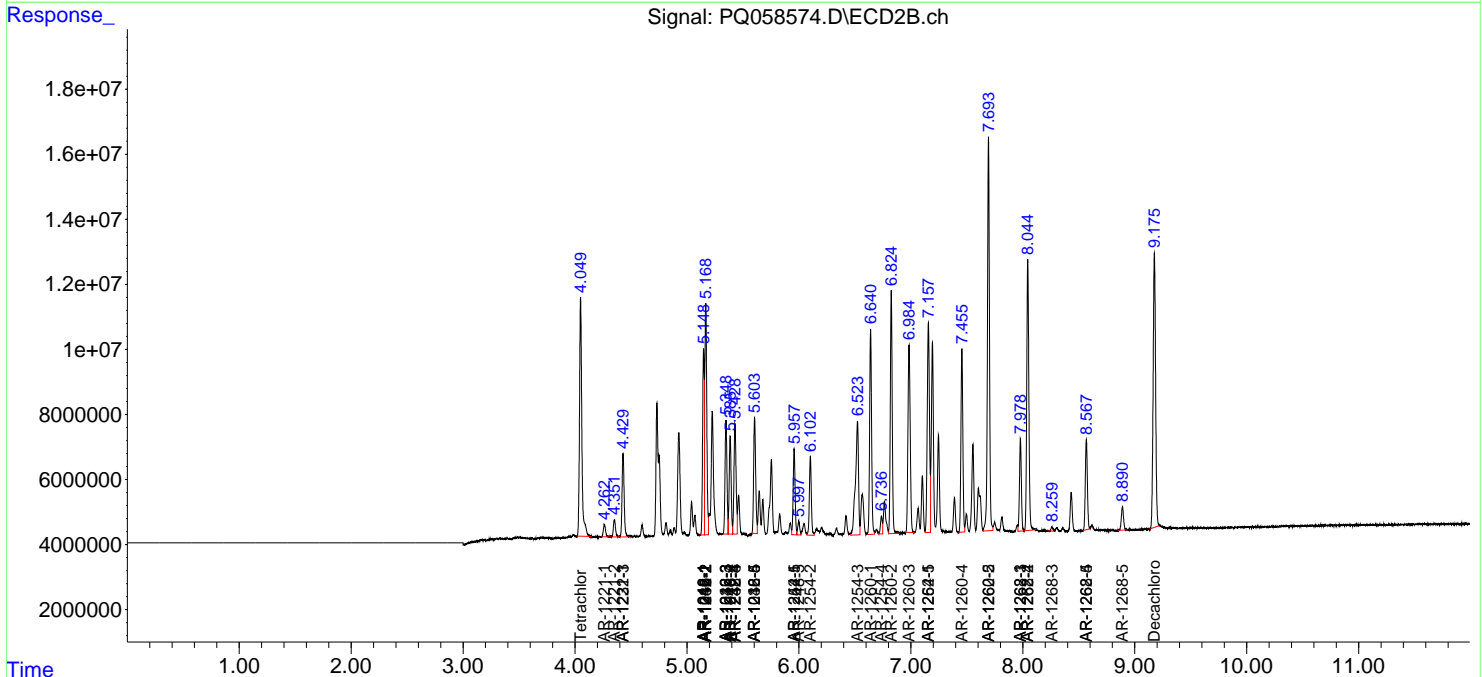
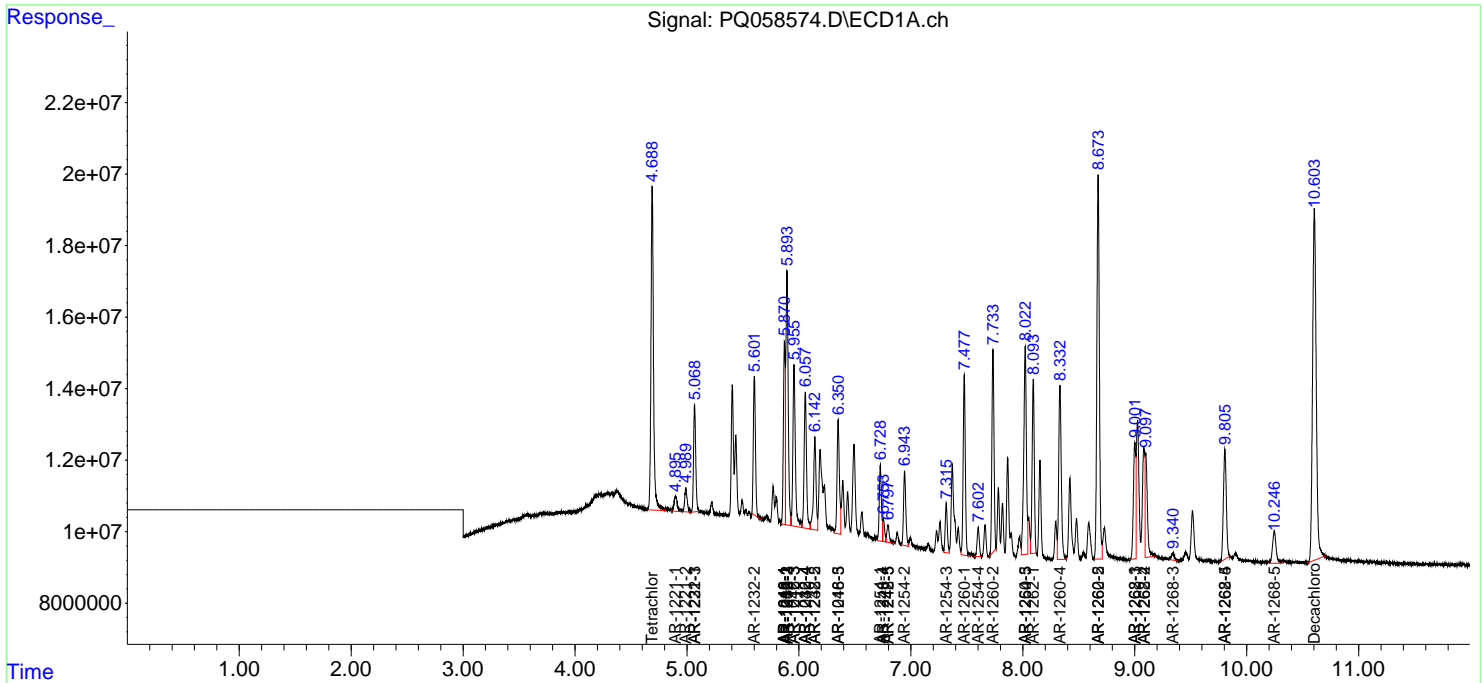
(f)=RT Delta > 1/2 Window (#)=Amounts differ by > 25% (m)=manual int.

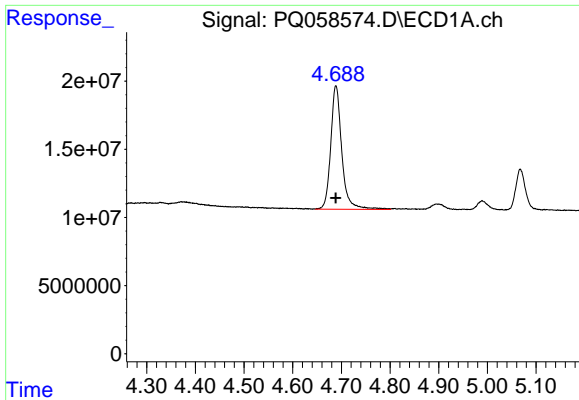
Data Path : Z:\pestpcbsrv\HPCHEM1\ECD_Q\Data\PQ071322\
 Data File : PQ058574.D
 Signal(s) : Signal #1: ECD1A.ch Signal #2: ECD2B.ch
 Acq On : 13 Jul 2022 12:47
 Operator : YP\AJ
 Sample : AR1660CCC400
 Misc :
 ALS Vial : 3 Sample Multiplier: 1

Instrument :
 ECD_Q
 ClientSampleId :

Integration File signal 1: autoint1.e
 Integration File signal 2: autoint2.e
 Quant Time: Jul 14 00:21:01 2022
 Quant Method : Z:\pestpcbsrv\HPCHEM1\ECD_Q\Method\PQ071222CLP.M
 Quant Title : GC EXTRACTABLES
 QLast Update : Wed Jul 13 07:04:45 2022
 Response via : Initial Calibration
 Integrator: ChemStation

Volume Inj. : 1 µl
 Signal #1 Phase : ZB MR1 Signal #2 Phase: ZB MR2
 Signal #1 Info : 30Mx0.32mmx 0.5µm Signal #2 Info : 30M x 0.32mm x 0.25µm

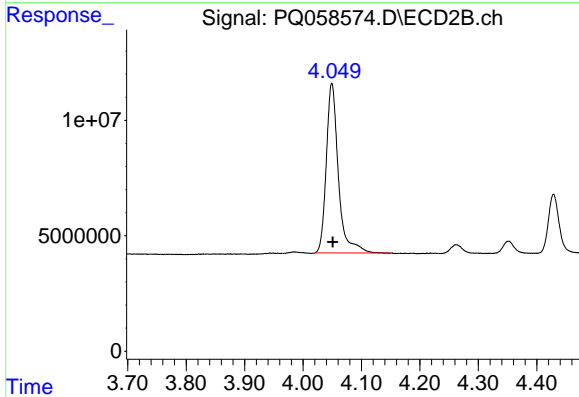




#1 Tetrachloro-m-xylene

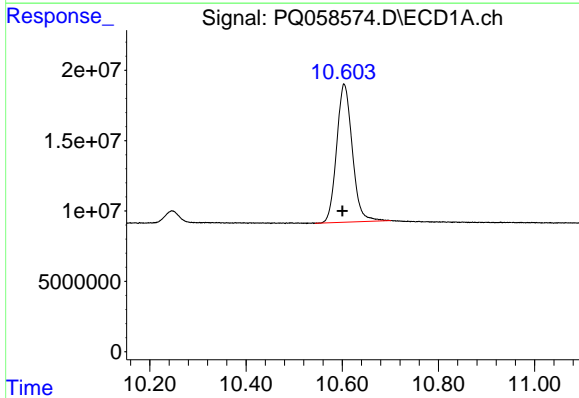
R.T.: 4.689 min
 Delta R.T.: 0.000 min
 Response: 143142735
 Conc: 20.34 ng/ml

Instrument :
 ECD_Q
 ClientSampleId :



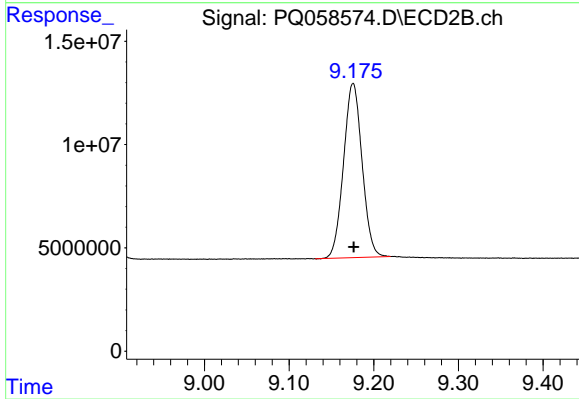
#1 Tetrachloro-m-xylene

R.T.: 4.049 min
 Delta R.T.: -0.002 min
 Response: 105651602
 Conc: 18.90 ng/ml



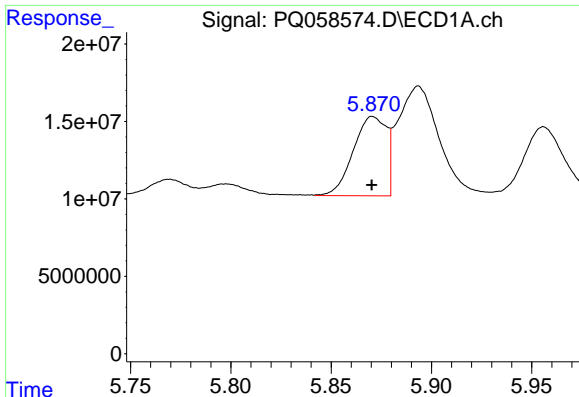
#2 Decachlorobiphenyl

R.T.: 10.604 min
 Delta R.T.: 0.004 min
 Response: 222281033
 Conc: 39.73 ng/ml



#2 Decachlorobiphenyl

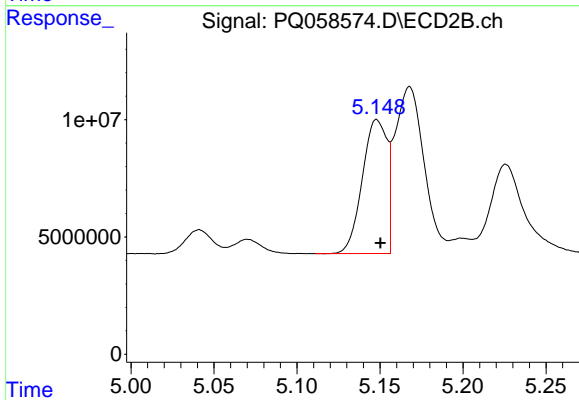
R.T.: 9.176 min
 Delta R.T.: 0.000 min
 Response: 128379694
 Conc: 38.77 ng/ml



#3 AR-1016-1

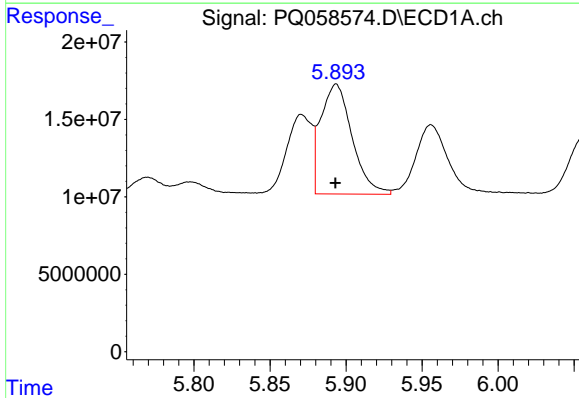
R.T.: 5.871 min
 Delta R.T.: 0.000 min
 Response: 58696600
 Conc: 388.26 ng/ml

Instrument :
 ECD_Q
 ClientSampleId :



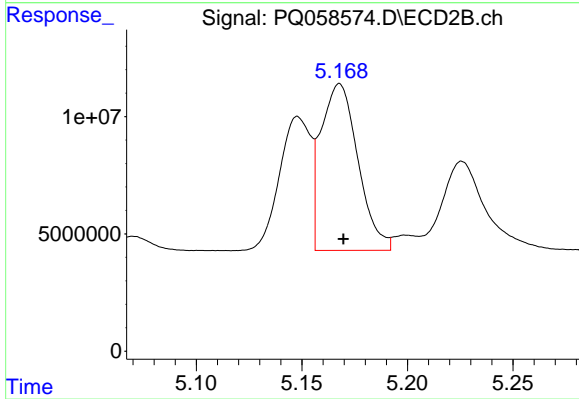
#3 AR-1016-1

R.T.: 5.148 min
 Delta R.T.: -0.002 min
 Response: 58839648
 Conc: 376.93 ng/ml



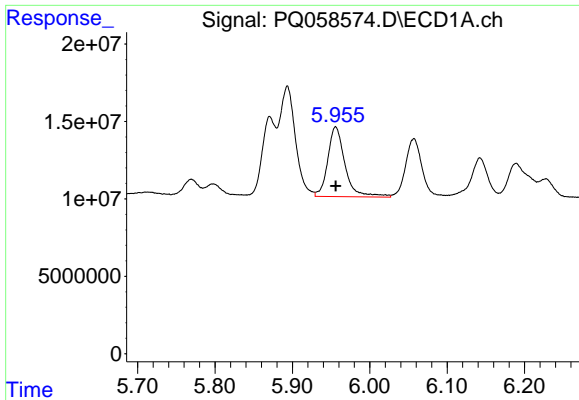
#4 AR-1016-2

R.T.: 5.894 min
 Delta R.T.: 0.000 min
 Response: 101773997
 Conc: 390.96 ng/ml



#4 AR-1016-2

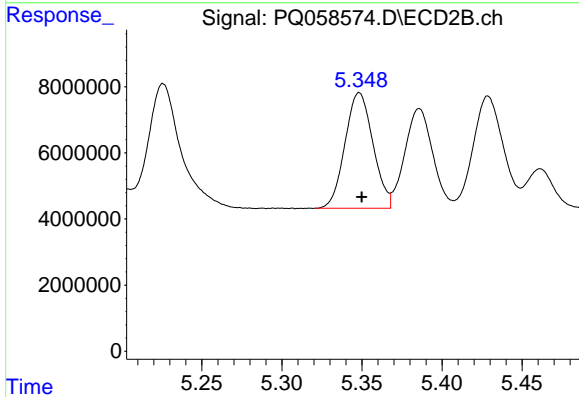
R.T.: 5.168 min
 Delta R.T.: -0.002 min
 Response: 86761318
 Conc: 386.74 ng/ml



#5 AR-1016-3

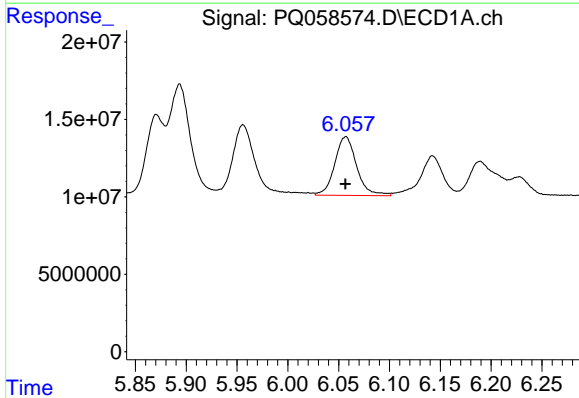
R.T.: 5.956 min
 Delta R.T.: 0.000 min
 Response: 69584067
 Conc: 430.92 ng/ml

Instrument :
 ECD_Q
 ClientSampleId :



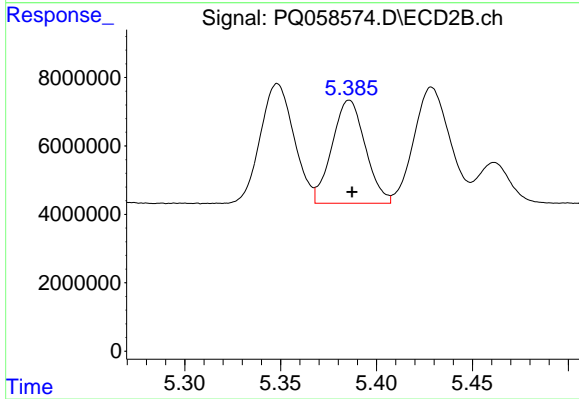
#5 AR-1016-3

R.T.: 5.348 min
 Delta R.T.: -0.002 min
 Response: 42541045
 Conc: 385.01 ng/ml



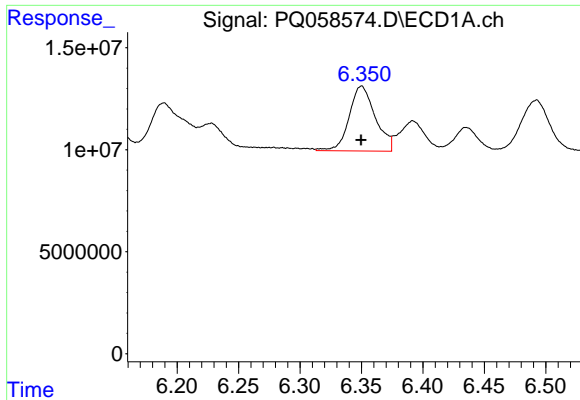
#6 AR-1016-4

R.T.: 6.057 min
 Delta R.T.: 0.000 min
 Response: 56708552
 Conc: 421.19 ng/ml



#6 AR-1016-4

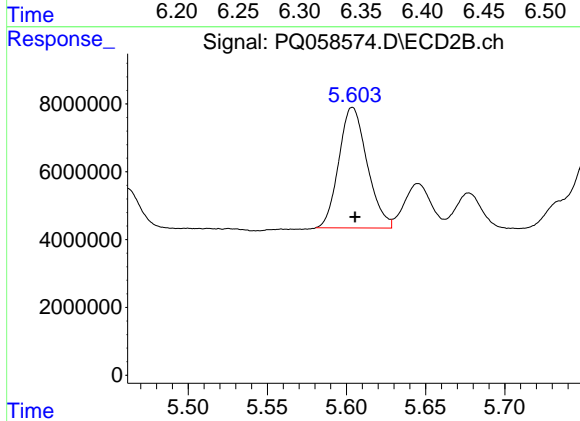
R.T.: 5.386 min
 Delta R.T.: -0.001 min
 Response: 36536760
 Conc: 383.91 ng/ml



#7 AR-1016-5

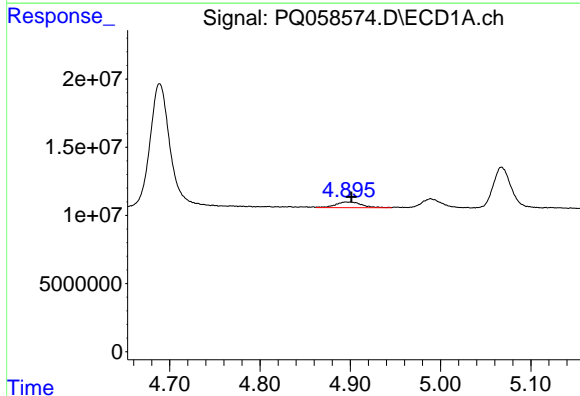
R.T.: 6.350 min
 Delta R.T.: 0.000 min
 Response: 47055159
 Conc: 401.08 ng/ml

Instrument :
 ECD_Q
 ClientSampleId :



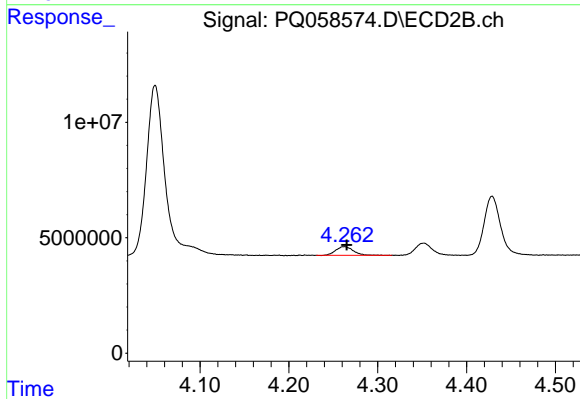
#7 AR-1016-5

R.T.: 5.604 min
 Delta R.T.: -0.002 min
 Response: 44317840
 Conc: 379.32 ng/ml



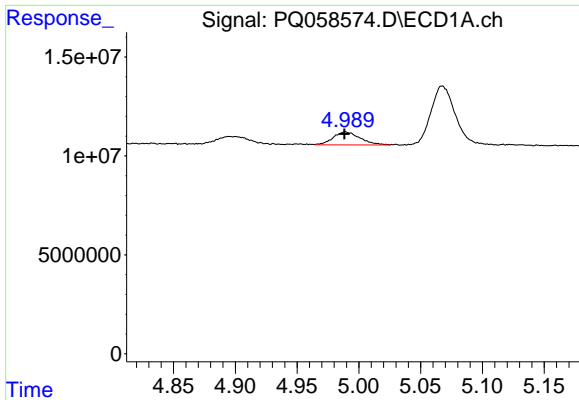
#8 AR-1221-1

R.T.: 4.895 min
 Delta R.T.: -0.006 min
 Response: 8318510
 Conc: 106.28 ng/ml



#8 AR-1221-1

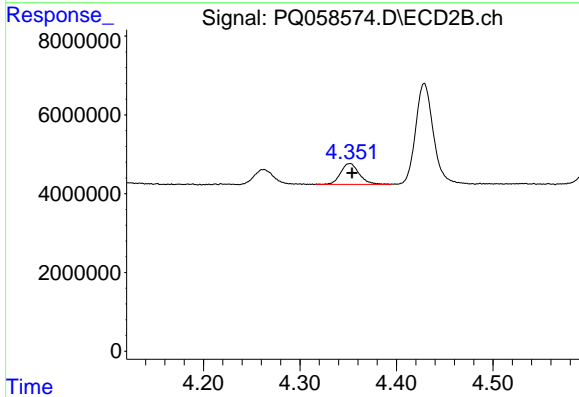
R.T.: 4.262 min
 Delta R.T.: -0.003 min
 Response: 5192237
 Conc: 87.47 ng/ml



#9 AR-1221-2

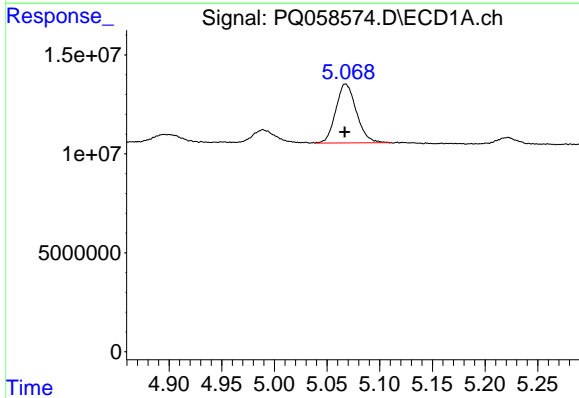
R.T.: 4.989 min
 Delta R.T.: 0.001 min
 Response: 10073620
 Conc: 183.69 ng/ml

Instrument :
 ECD_Q
 ClientSampleId :



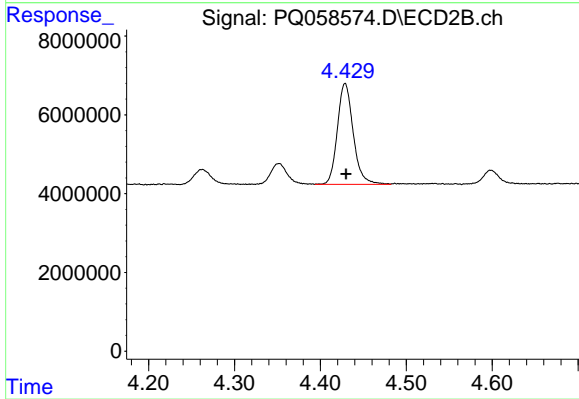
#9 AR-1221-2

R.T.: 4.352 min
 Delta R.T.: -0.002 min
 Response: 7069433
 Conc: 172.56 ng/ml



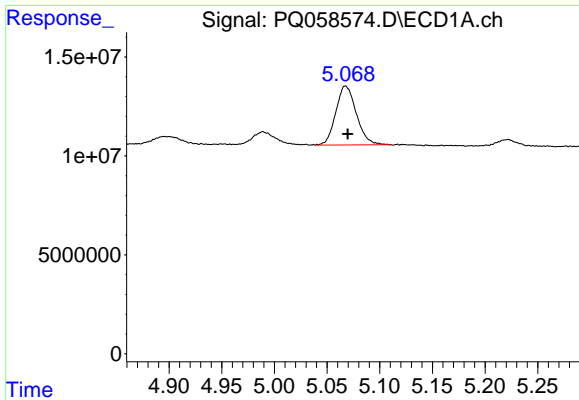
#10 AR-1221-3

R.T.: 5.068 min
 Delta R.T.: 0.000 min
 Response: 40483745
 Conc: 231.40 ng/ml



#10 AR-1221-3

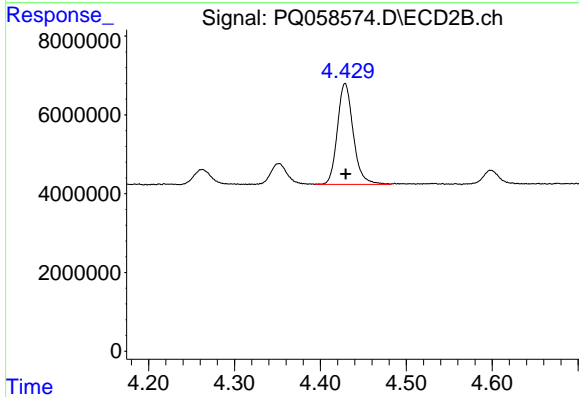
R.T.: 4.429 min
 Delta R.T.: -0.001 min
 Response: 32891453
 Conc: 227.75 ng/ml



#11 AR-1232-1

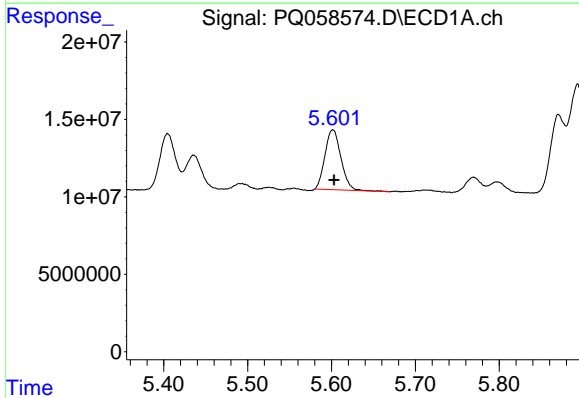
R.T.: 5.068 min
 Delta R.T.: -0.002 min
 Response: 40483745
 Conc: 255.70 ng/ml

Instrument :
 ECD_Q
 ClientSampleId :



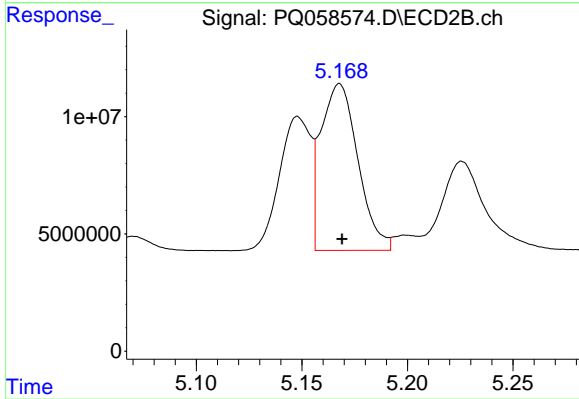
#11 AR-1232-1

R.T.: 4.429 min
 Delta R.T.: 0.000 min
 Response: 32891453
 Conc: 249.46 ng/ml



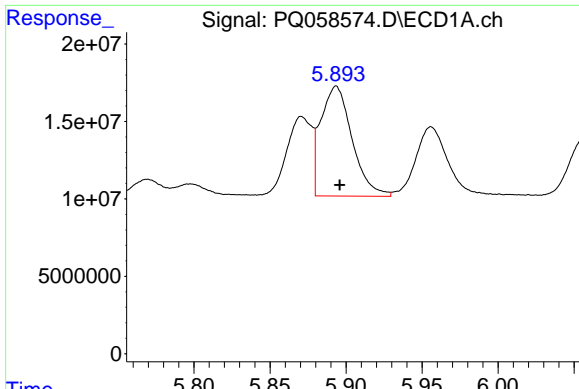
#12 AR-1232-2

R.T.: 5.602 min
 Delta R.T.: -0.001 min
 Response: 51197484
 Conc: 667.72 ng/ml



#12 AR-1232-2

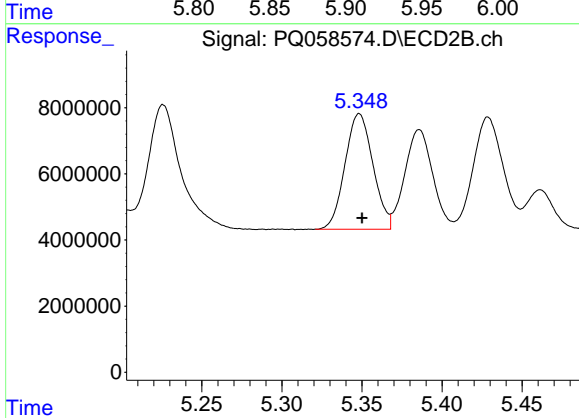
R.T.: 5.168 min
 Delta R.T.: -0.001 min
 Response: 86761318
 Conc: 740.49 ng/ml



#13 AR-1232-3

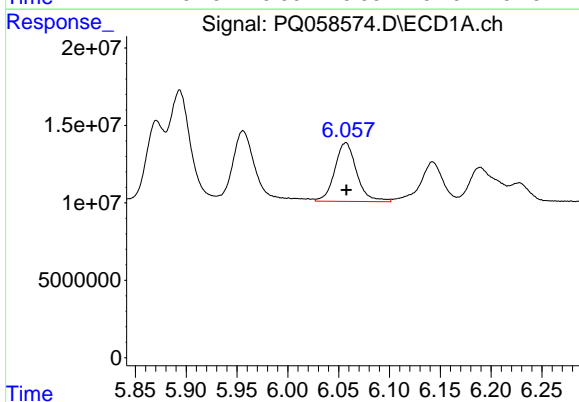
R.T.: 5.894 min
 Delta R.T.: -0.002 min
 Response: 101773997
 Conc: 724.12 ng/ml

Instrument :
 ECD_Q
 ClientSampleId :



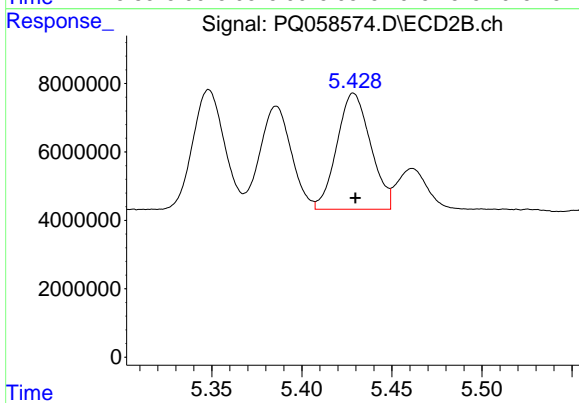
#13 AR-1232-3

R.T.: 5.348 min
 Delta R.T.: -0.002 min
 Response: 42541045
 Conc: 775.39 ng/ml



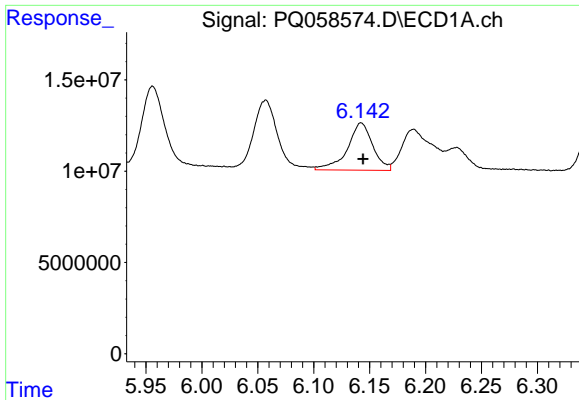
#14 AR-1232-4

R.T.: 6.057 min
 Delta R.T.: 0.000 min
 Response: 56708552
 Conc: 800.00 ng/ml



#14 AR-1232-4

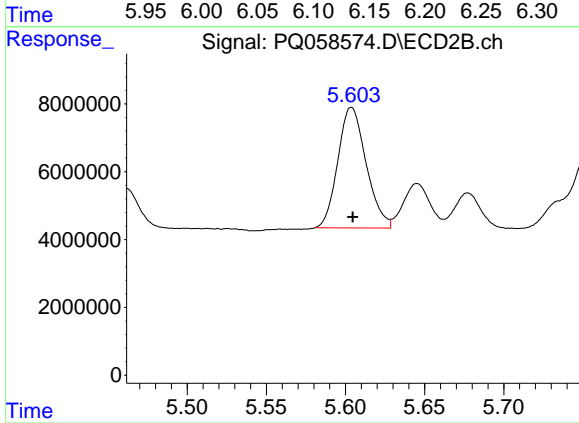
R.T.: 5.429 min
 Delta R.T.: -0.001 min
 Response: 44232505
 Conc: 840.94 ng/ml



#15 AR-1232-5

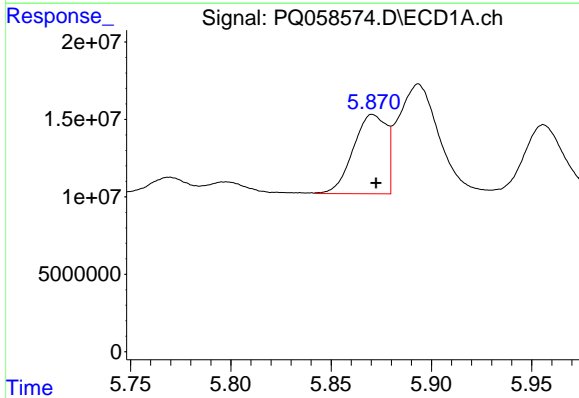
R.T.: 6.142 min
 Delta R.T.: -0.002 min
 Response: 41022347
 Conc: 906.80 ng/ml

Instrument :
 ECD_Q
 ClientSampleId :



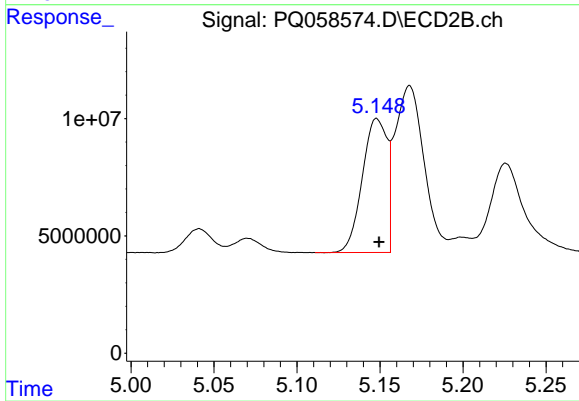
#15 AR-1232-5

R.T.: 5.604 min
 Delta R.T.: 0.000 min
 Response: 44317840
 Conc: 777.61 ng/ml



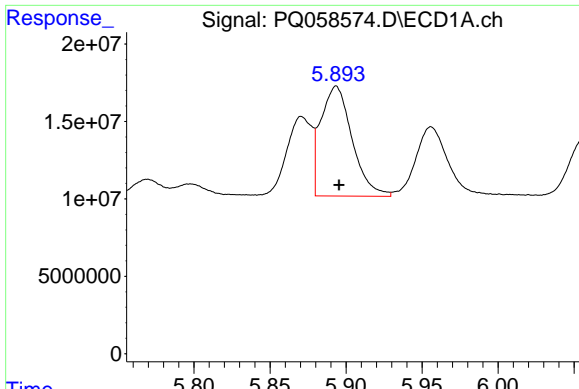
#16 AR-1242-1

R.T.: 5.871 min
 Delta R.T.: -0.002 min
 Response: 58696600
 Conc: 425.76 ng/ml



#16 AR-1242-1

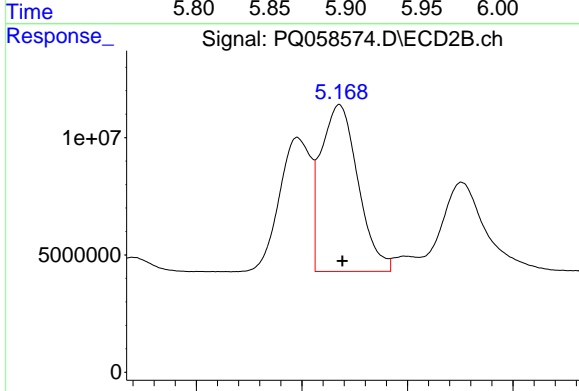
R.T.: 5.148 min
 Delta R.T.: -0.001 min
 Response: 58839648
 Conc: 424.44 ng/ml



#17 AR-1242-2

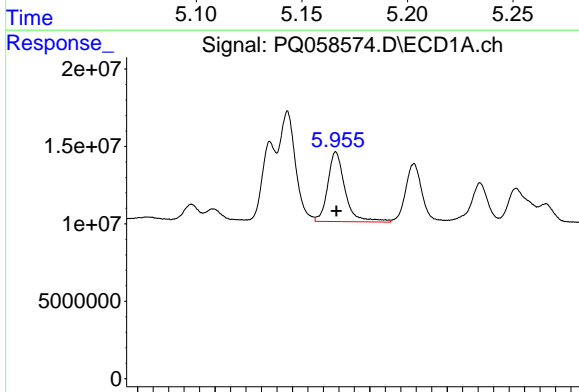
R.T.: 5.894 min
 Delta R.T.: -0.002 min
 Response: 101773997
 Conc: 423.38 ng/ml

Instrument :
 ECD_Q
 ClientSampleId :



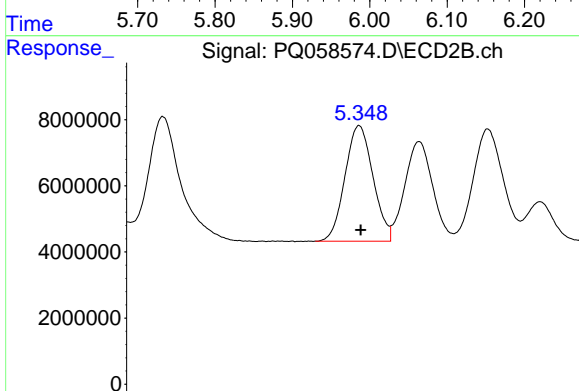
#17 AR-1242-2

R.T.: 5.168 min
 Delta R.T.: -0.001 min
 Response: 86761318
 Conc: 433.87 ng/ml



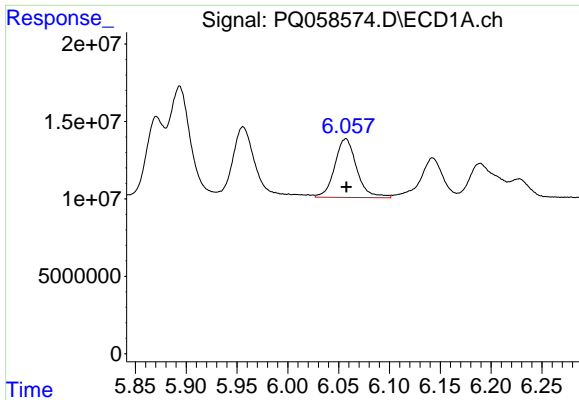
#18 AR-1242-3

R.T.: 5.956 min
 Delta R.T.: 0.000 min
 Response: 69584067
 Conc: 438.10 ng/ml



#18 AR-1242-3

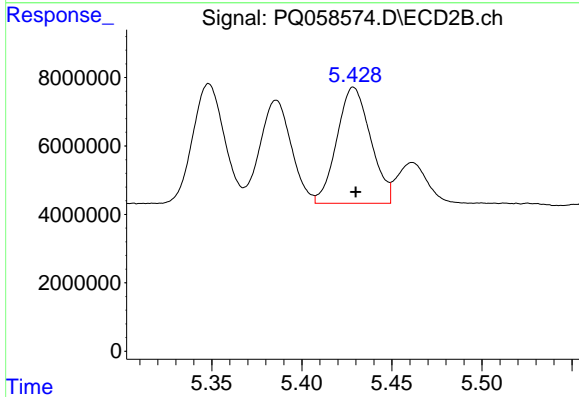
R.T.: 5.348 min
 Delta R.T.: -0.001 min
 Response: 42541045
 Conc: 430.64 ng/ml



#19 AR-1242-4

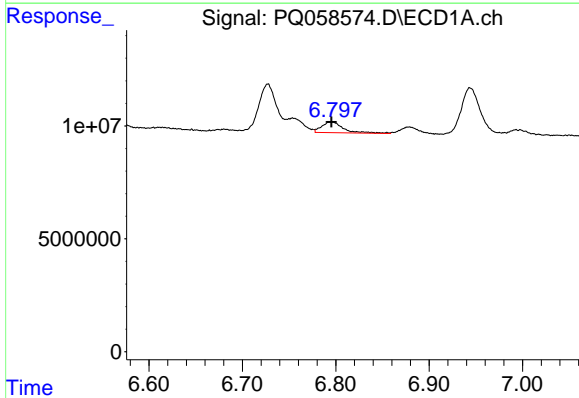
R.T.: 6.057 min
 Delta R.T.: 0.000 min
 Response: 56708552
 Conc: 431.12 ng/ml

Instrument :
 ECD_Q
 ClientSampleId :



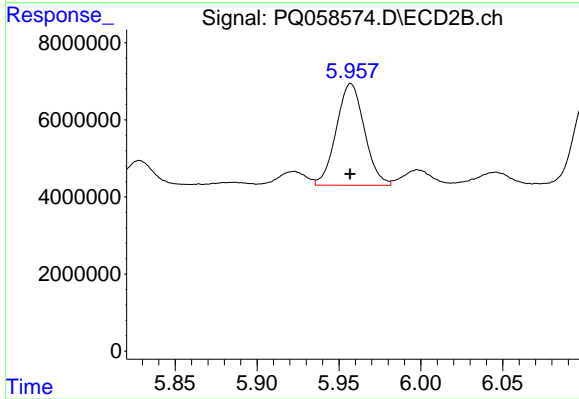
#19 AR-1242-4

R.T.: 5.429 min
 Delta R.T.: -0.001 min
 Response: 44232505
 Conc: 435.20 ng/ml



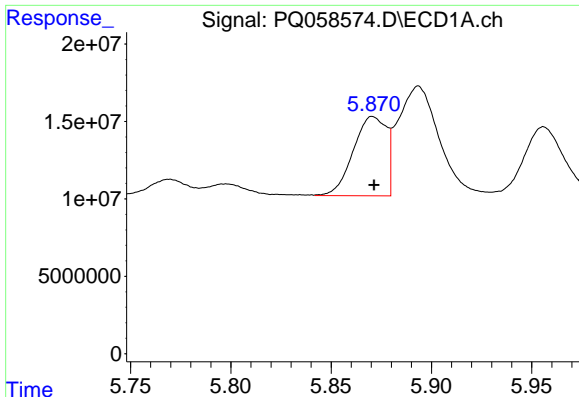
#20 AR-1242-5

R.T.: 6.796 min
 Delta R.T.: 0.000 min
 Response: 7768813
 Conc: 68.16 ng/ml



#20 AR-1242-5

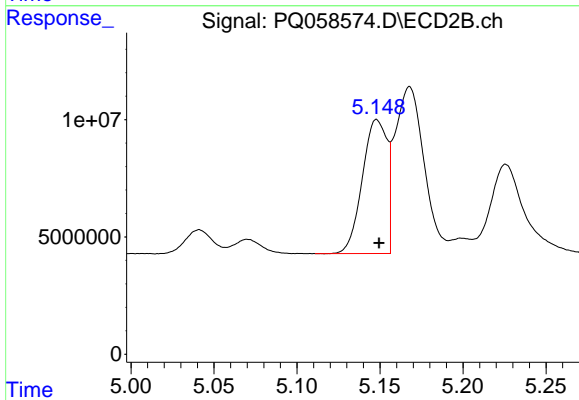
R.T.: 5.957 min
 Delta R.T.: 0.000 min
 Response: 31537562
 Conc: 270.19 ng/ml



#21 AR-1248-1

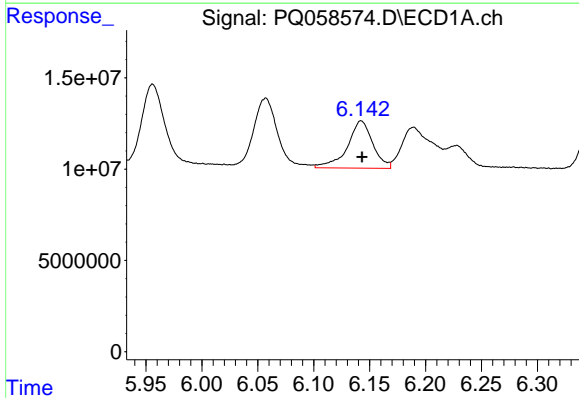
R.T.: 5.871 min
 Delta R.T.: 0.000 min
 Response: 58696600
 Conc: 499.43 ng/ml

Instrument :
 ECD_Q
 ClientSampleId :



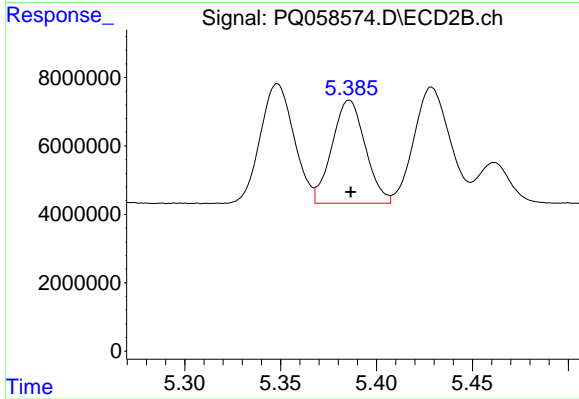
#21 AR-1248-1

R.T.: 5.148 min
 Delta R.T.: -0.001 min
 Response: 58839648
 Conc: 508.32 ng/ml



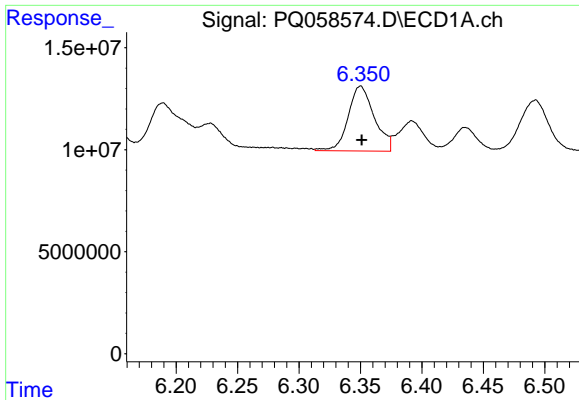
#22 AR-1248-2

R.T.: 6.142 min
 Delta R.T.: 0.000 min
 Response: 41022347
 Conc: 243.66 ng/ml



#22 AR-1248-2

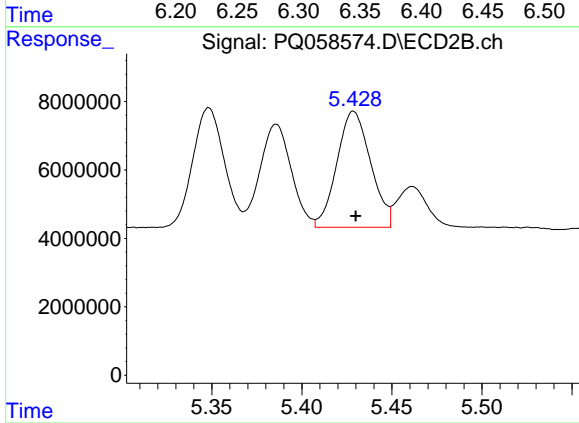
R.T.: 5.386 min
 Delta R.T.: 0.000 min
 Response: 36536760
 Conc: 219.10 ng/ml



#23 AR-1248-3

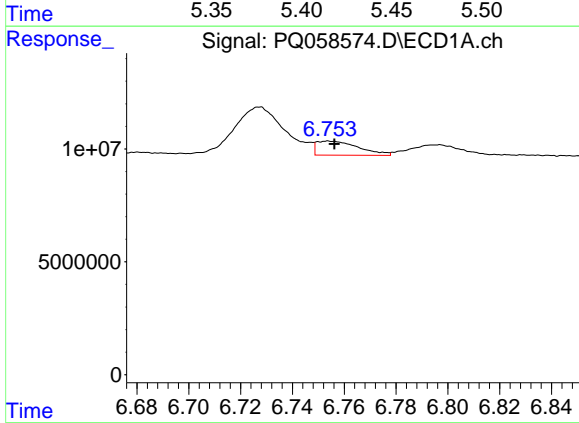
R.T.: 6.350 min
 Delta R.T.: -0.001 min
 Response: 47055159
 Conc: 232.78 ng/ml

Instrument :
 ECD_Q
 ClientSampleId :



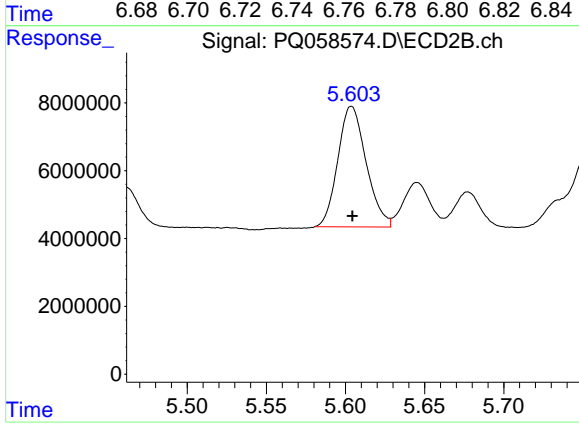
#23 AR-1248-3

R.T.: 5.429 min
 Delta R.T.: -0.001 min
 Response: 44232505
 Conc: 256.03 ng/ml



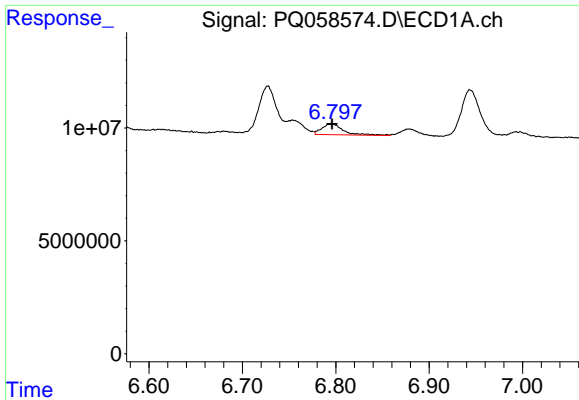
#24 AR-1248-4

R.T.: 6.754 min
 Delta R.T.: -0.002 min
 Response: 7084211
 Conc: 35.75 ng/ml



#24 AR-1248-4

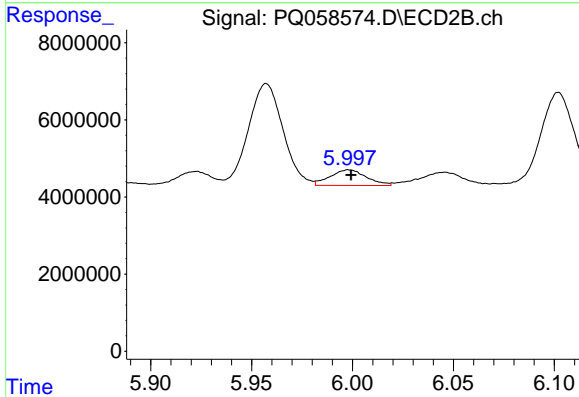
R.T.: 5.604 min
 Delta R.T.: 0.000 min
 Response: 44317840
 Conc: 223.45 ng/ml



#25 AR-1248-5

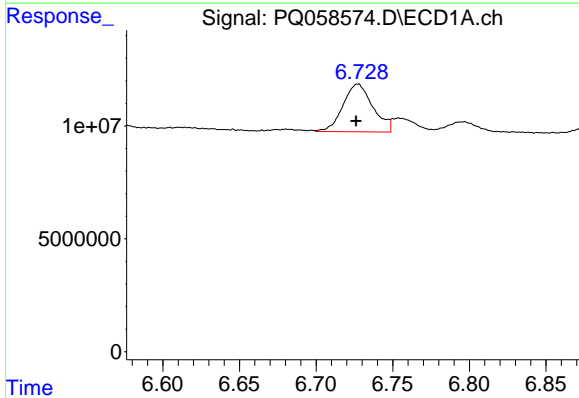
R.T.: 6.796 min
 Delta R.T.: 0.000 min
 Response: 7768813
 Conc: 36.74 ng/ml

Instrument :
 ECD_Q
 ClientSampleId :



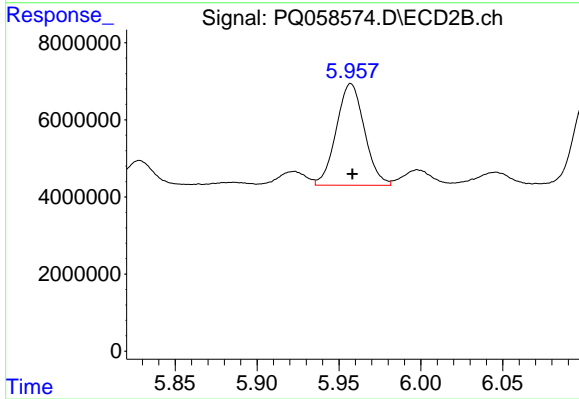
#25 AR-1248-5

R.T.: 5.998 min
 Delta R.T.: -0.001 min
 Response: 5124860
 Conc: 28.88 ng/ml



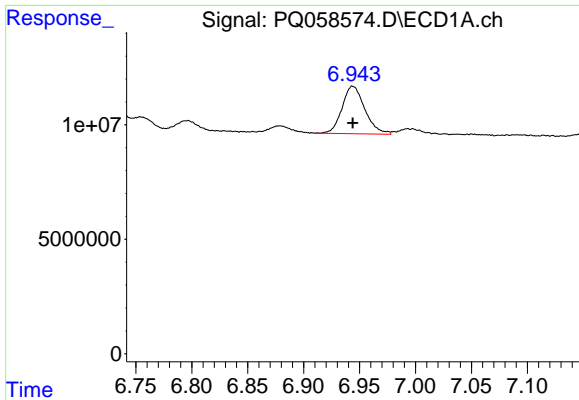
#26 AR-1254-1

R.T.: 6.727 min
 Delta R.T.: 0.001 min
 Response: 28823787
 Conc: 138.43 ng/ml



#26 AR-1254-1

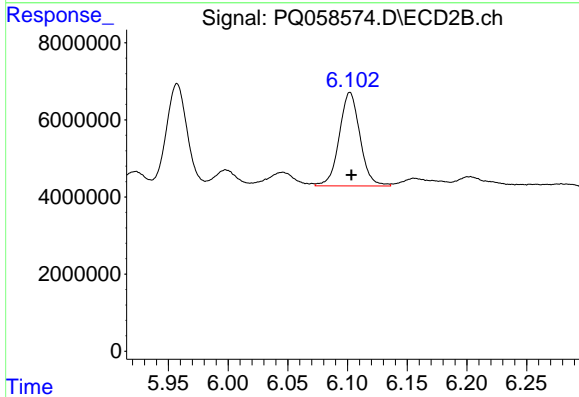
R.T.: 5.957 min
 Delta R.T.: 0.000 min
 Response: 31537562
 Conc: 104.31 ng/ml



#27 AR-1254-2

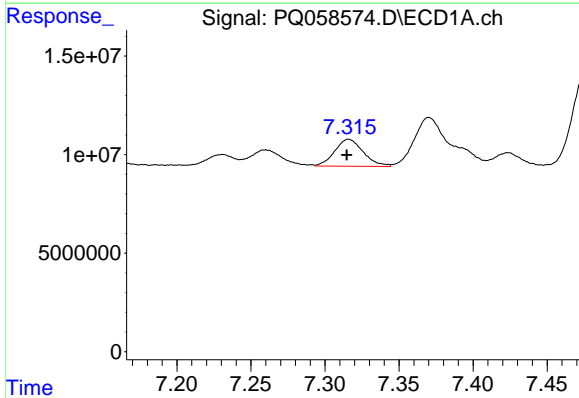
R.T.: 6.944 min
 Delta R.T.: 0.000 min
 Response: 29381369
 Conc: 94.40 ng/ml

Instrument :
 ECD_Q
 ClientSampleId :



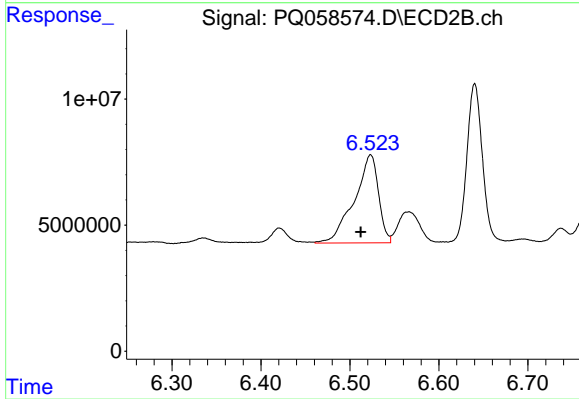
#27 AR-1254-2

R.T.: 6.102 min
 Delta R.T.: -0.001 min
 Response: 29301589
 Conc: 112.72 ng/ml



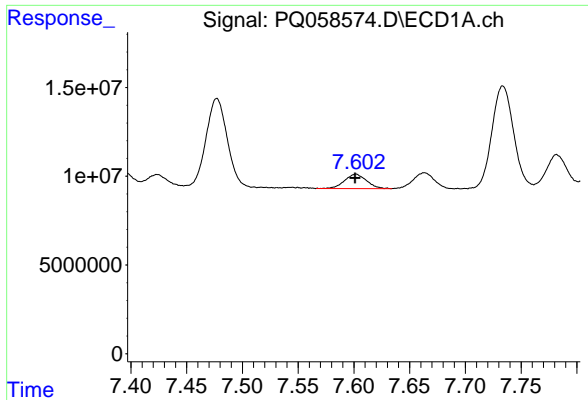
#28 AR-1254-3

R.T.: 7.316 min
 Delta R.T.: 0.001 min
 Response: 18313586
 Conc: 51.09 ng/ml



#28 AR-1254-3

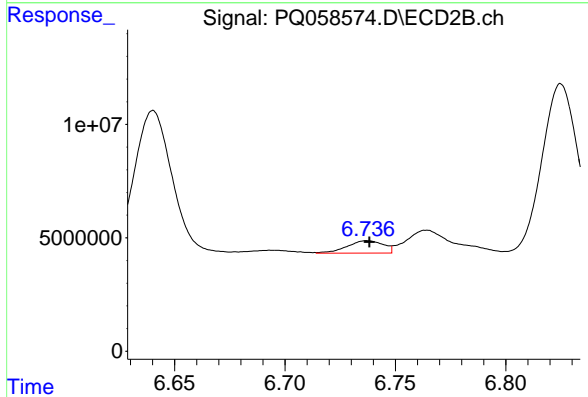
R.T.: 6.523 min
 Delta R.T.: 0.011 min
 Response: 66079403
 Conc: 164.99 ng/ml



#29 AR-1254-4

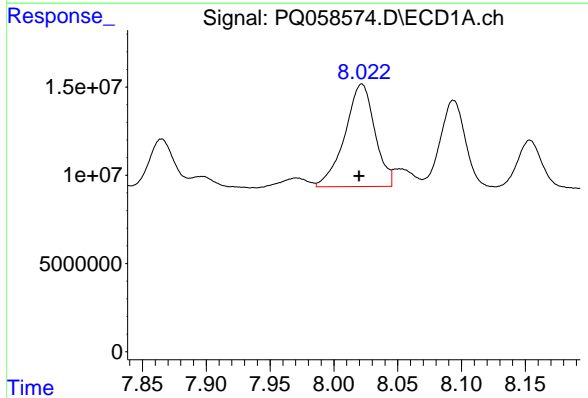
R.T.: 7.602 min
 Delta R.T.: 0.000 min
 Response: 11225811
 Conc: 51.72 ng/ml

Instrument :
 ECD_Q
 ClientSampleId :



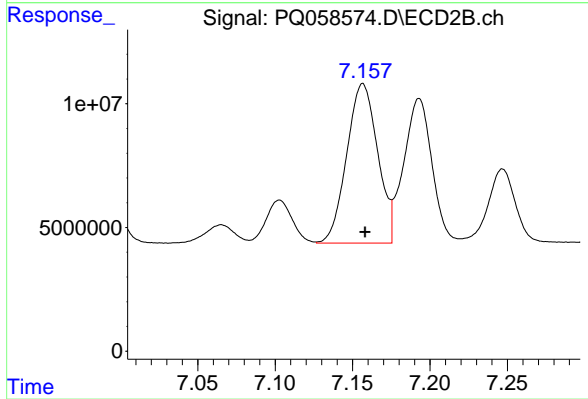
#29 AR-1254-4

R.T.: 6.737 min
 Delta R.T.: 0.000 min
 Response: 6258133
 Conc: 24.44 ng/ml



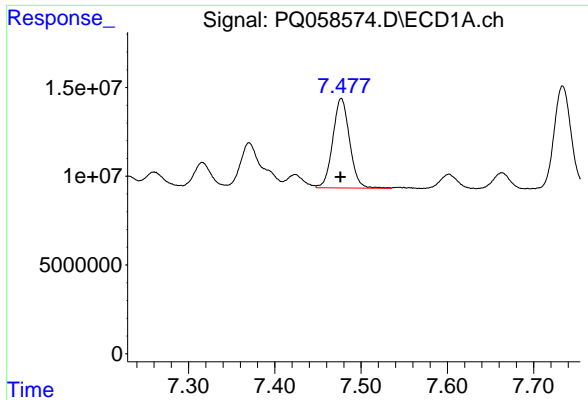
#30 AR-1254-5

R.T.: 8.022 min
 Delta R.T.: 0.002 min
 Response: 94851760
 Conc: 364.41 ng/ml



#30 AR-1254-5

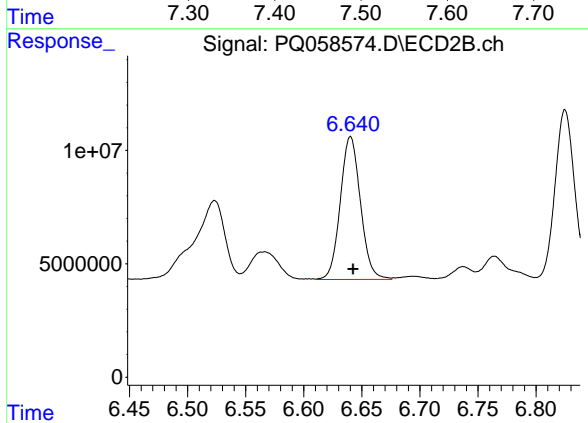
R.T.: 7.157 min
 Delta R.T.: -0.001 min
 Response: 89548580
 Conc: 293.56 ng/ml



#31 AR-1260-1

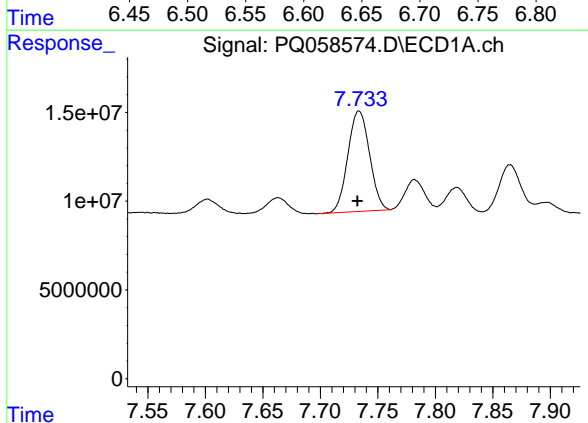
R.T.: 7.477 min
 Delta R.T.: 0.001 min
 Response: 68233997
 Conc: 387.48 ng/ml

Instrument :
 ECD_Q
 ClientSampleId :



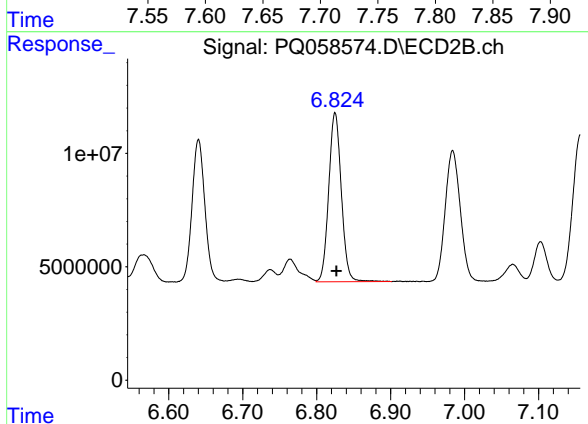
#31 AR-1260-1

R.T.: 6.640 min
 Delta R.T.: -0.002 min
 Response: 76115167
 Conc: 380.25 ng/ml



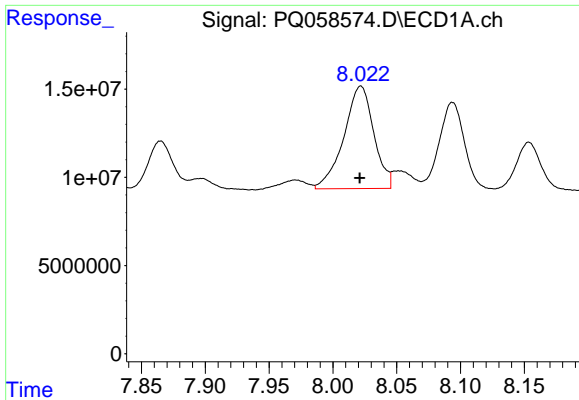
#32 AR-1260-2

R.T.: 7.734 min
 Delta R.T.: 0.001 min
 Response: 74213278
 Conc: 354.38 ng/ml



#32 AR-1260-2

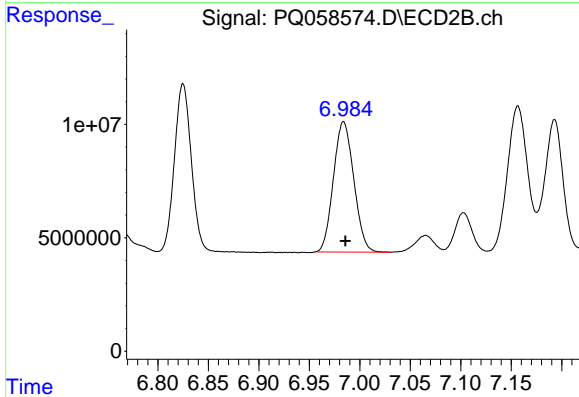
R.T.: 6.825 min
 Delta R.T.: -0.002 min
 Response: 88420815
 Conc: 379.92 ng/ml



#33 AR-1260-3

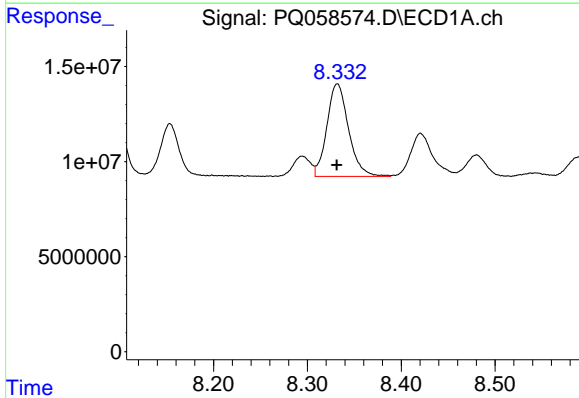
R.T.: 8.022 min
 Delta R.T.: 0.000 min
 Response: 94851760
 Conc: 358.68 ng/ml

Instrument :
 ECD_Q
 ClientSampleId :



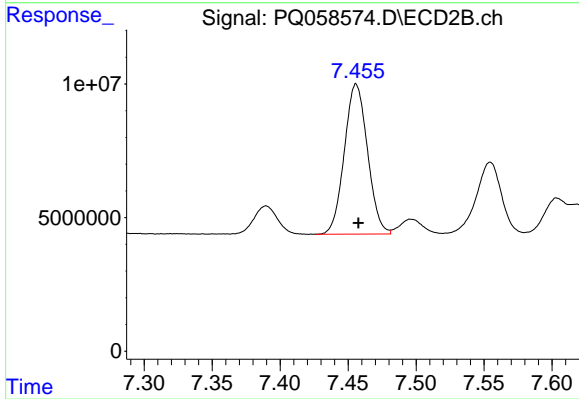
#33 AR-1260-3

R.T.: 6.984 min
 Delta R.T.: -0.002 min
 Response: 80641526
 Conc: 376.94 ng/ml



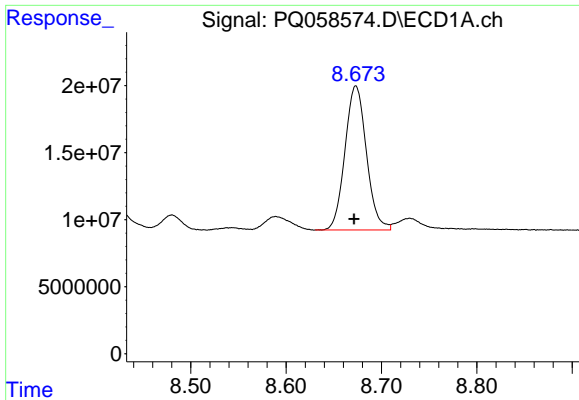
#34 AR-1260-4

R.T.: 8.332 min
 Delta R.T.: 0.000 min
 Response: 77812243
 Conc: 382.50 ng/ml



#34 AR-1260-4

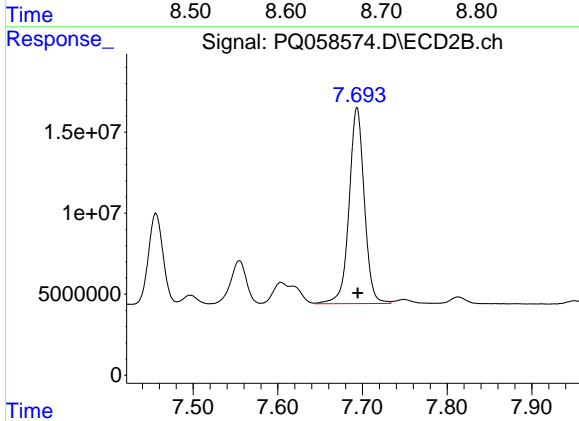
R.T.: 7.456 min
 Delta R.T.: -0.002 min
 Response: 66593472
 Conc: 376.79 ng/ml



#35 AR-1260-5

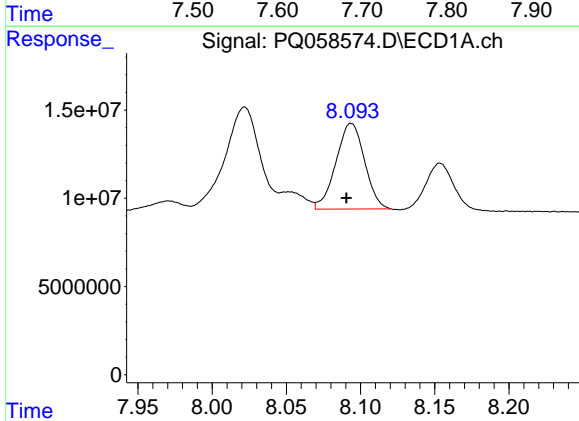
R.T.: 8.673 min
 Delta R.T.: 0.002 min
 Response: 168373167
 Conc: 382.00 ng/ml

Instrument :
 ECD_Q
 ClientSampleId :



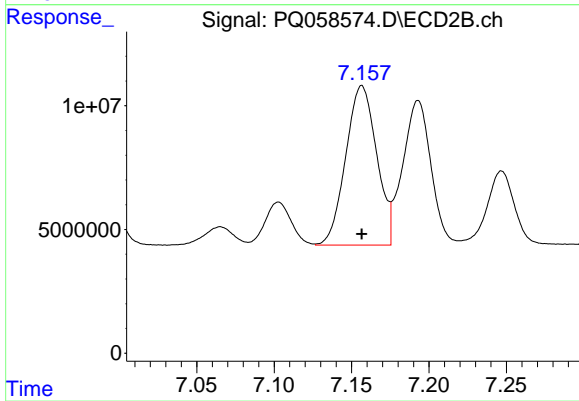
#35 AR-1260-5

R.T.: 7.694 min
 Delta R.T.: 0.000 min
 Response: 150857892
 Conc: 379.25 ng/ml



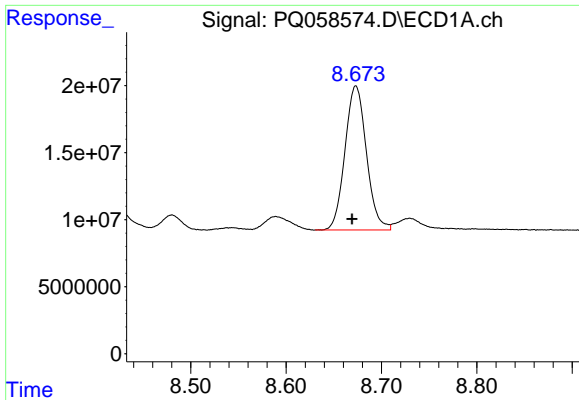
#36 AR-1262-1

R.T.: 8.094 min
 Delta R.T.: 0.003 min
 Response: 65156793
 Conc: 199.84 ng/ml



#36 AR-1262-1

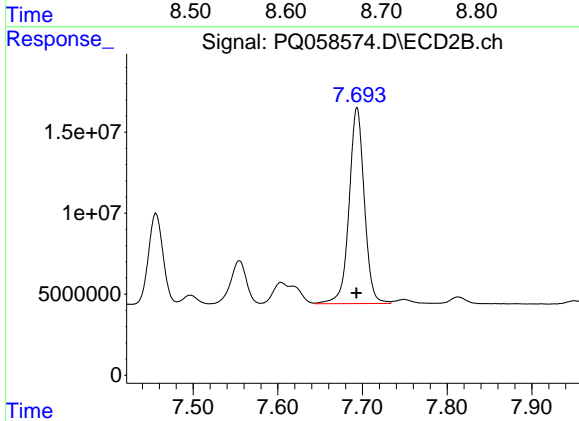
R.T.: 7.157 min
 Delta R.T.: 0.000 min
 Response: 89548580
 Conc: 555.35 ng/ml



#37 AR-1262-2

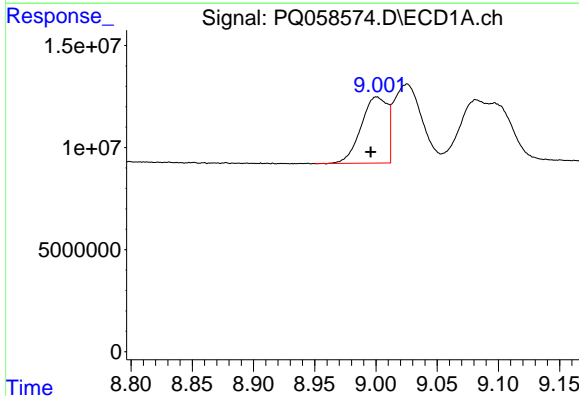
R.T.: 8.673 min
 Delta R.T.: 0.004 min
 Response: 168373167
 Conc: 263.15 ng/ml

Instrument :
 ECD_Q
 ClientSampleId :



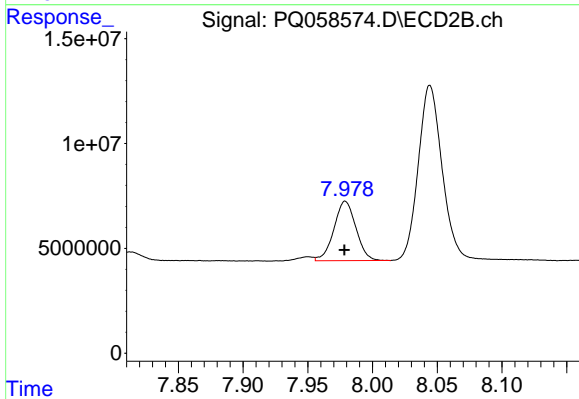
#37 AR-1262-2

R.T.: 7.694 min
 Delta R.T.: 0.000 min
 Response: 150857892
 Conc: 270.00 ng/ml



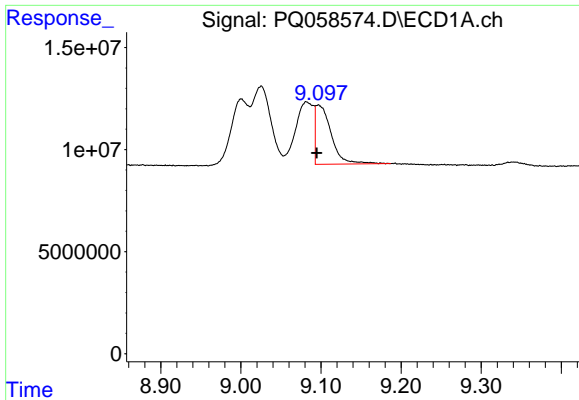
#38 AR-1262-3

R.T.: 9.001 min
 Delta R.T.: 0.005 min
 Response: 48652869
 Conc: 148.87 ng/ml



#38 AR-1262-3

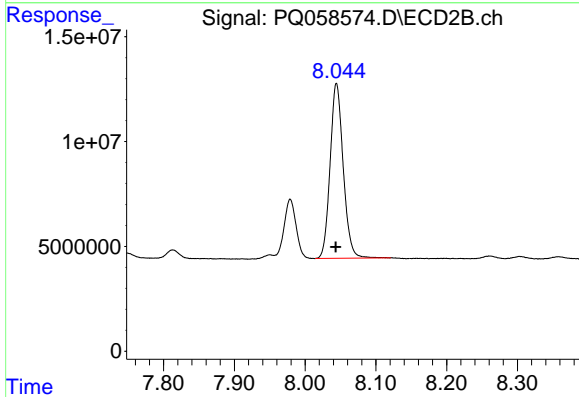
R.T.: 7.979 min
 Delta R.T.: 0.000 min
 Response: 33651452
 Conc: 154.49 ng/ml



#39 AR-1262-4

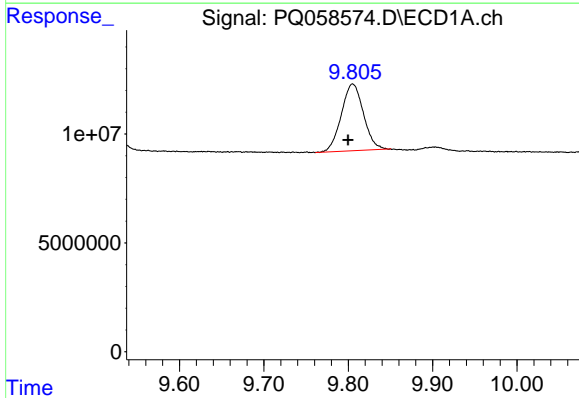
R.T.: 9.097 min
 Delta R.T.: 0.002 min
 Response: 39740274
 Conc: 163.57 ng/ml

Instrument :
 ECD_Q
 ClientSampleId :



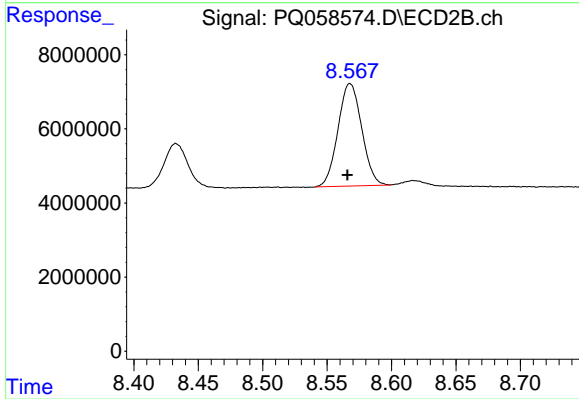
#39 AR-1262-4

R.T.: 8.044 min
 Delta R.T.: 0.001 min
 Response: 107302946
 Conc: 268.94 ng/ml



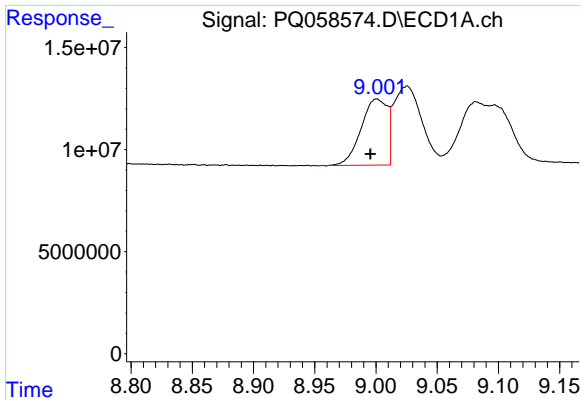
#40 AR-1262-5

R.T.: 9.805 min
 Delta R.T.: 0.005 min
 Response: 55934069
 Conc: 201.06 ng/ml



#40 AR-1262-5

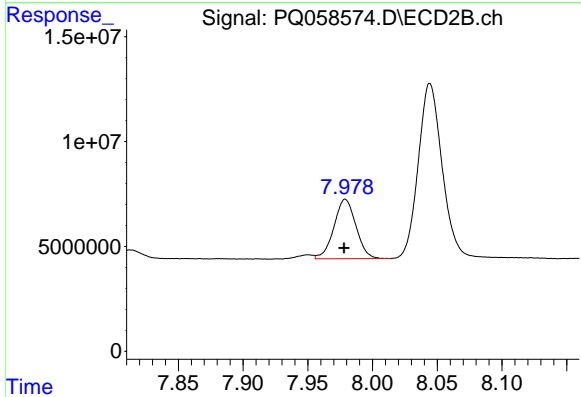
R.T.: 8.568 min
 Delta R.T.: 0.002 min
 Response: 35472072
 Conc: 223.66 ng/ml



#41 AR-1268-1

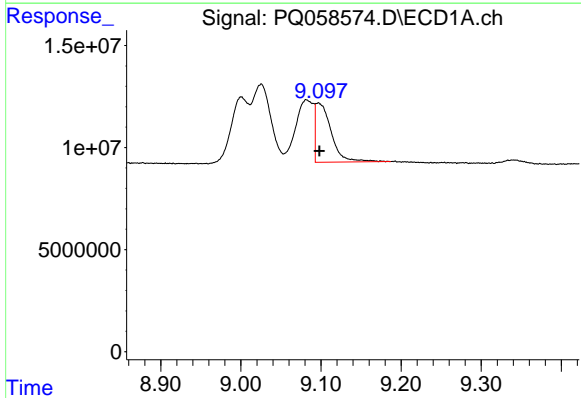
R.T.: 9.001 min
 Delta R.T.: 0.005 min
 Response: 48652869
 Conc: 46.92 ng/ml

Instrument :
 ECD_Q
 ClientSampleId :



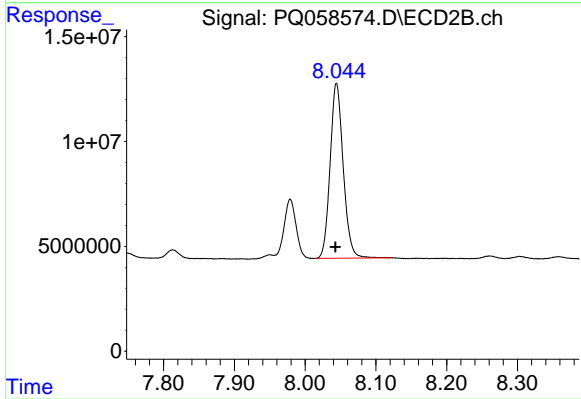
#41 AR-1268-1

R.T.: 7.979 min
 Delta R.T.: 0.001 min
 Response: 33651452
 Conc: 43.30 ng/ml



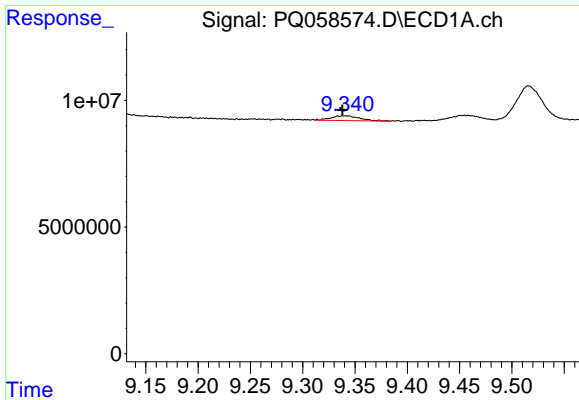
#42 AR-1268-2

R.T.: 9.097 min
 Delta R.T.: -0.001 min
 Response: 39740274
 Conc: 36.59 ng/ml



#42 AR-1268-2

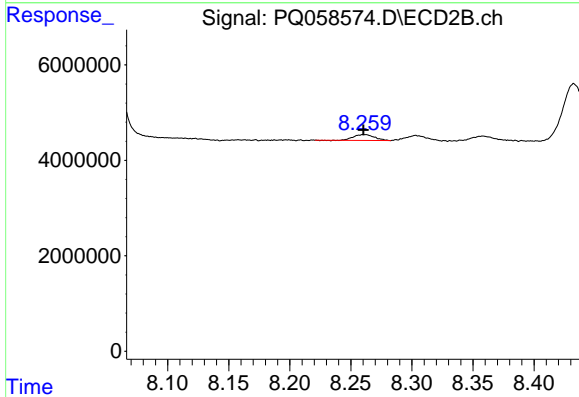
R.T.: 8.044 min
 Delta R.T.: 0.002 min
 Response: 107302946
 Conc: 151.93 ng/ml



#43 AR-1268-3

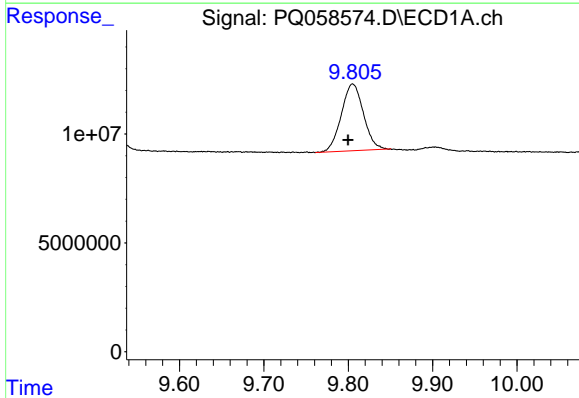
R.T.: 9.340 min
 Delta R.T.: 0.002 min
 Response: 3511184
 Conc: 3.56 ng/ml

Instrument :
 ECD_Q
 ClientSampleId :



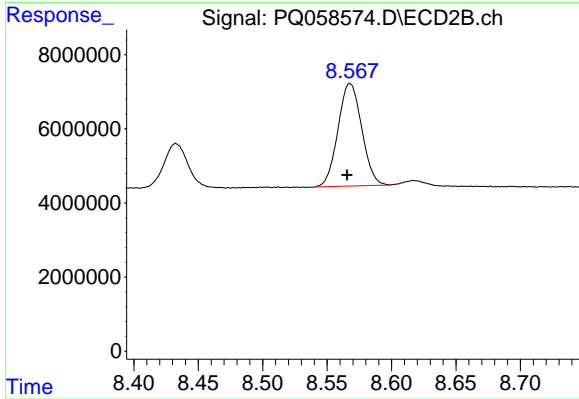
#43 AR-1268-3

R.T.: 8.261 min
 Delta R.T.: 0.000 min
 Response: 1491159
 Conc: 2.43 ng/ml



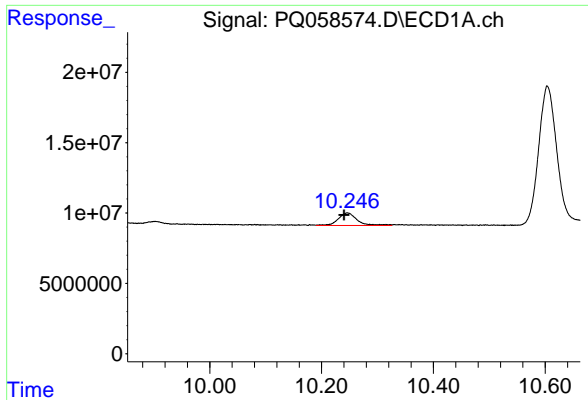
#44 AR-1268-4

R.T.: 9.805 min
 Delta R.T.: 0.005 min
 Response: 55934069
 Conc: 168.60 ng/ml



#44 AR-1268-4

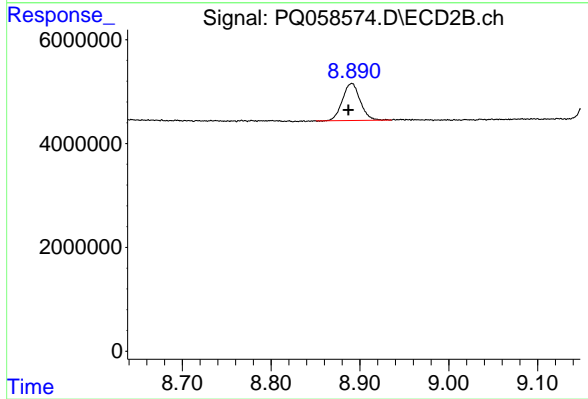
R.T.: 8.568 min
 Delta R.T.: 0.002 min
 Response: 35472072
 Conc: 166.63 ng/ml



#45 AR-1268-5

R.T.: 10.246 min
Delta R.T.: 0.006 min
Response: 20812504
Conc: 6.91 ng/ml

Instrument :
ECD_Q
ClientSampleId :



#45 AR-1268-5

R.T.: 8.891 min
Delta R.T.: 0.004 min
Response: 9911026
Conc: 5.39 ng/ml