

Data Path : Z:\pestpcbsrv\HPCHEM1\ECD\_Q\Data\PQ071323\  
 Data File : PQ062222.D  
 Signal(s) : Signal #1: ECD1A.ch Signal #2: ECD2B.ch  
 Acq On : 13 Jul 2023 22:31  
 Operator : YP\AJ  
 Sample : AR1254CCC500  
 Misc :  
 ALS Vial : 6 Sample Multiplier: 1

**Instrument :**  
 ECD\_Q  
**ClientSampleId :**  
 AR1254CCC500

**Manual Integrations**  
**APPROVED**  
 Reviewed By :Yogesh Patel 07/14/2023  
 Supervised By :Ankita Jodhani 07/14/2023

Integration File signal 1: autoint1.e  
 Integration File signal 2: autoint2.e  
 Quant Time: Jul 13 23:08:06 2023  
 Quant Method : Z:\pestpcbsrv\HPCHEM1\ECD\_Q\Method\PQ070123.M  
 Quant Title : GC EXTRACTABLES  
 QLast Update : Tue Jul 04 05:32:27 2023  
 Response via : Initial Calibration  
 Integrator: ChemStation

Volume Inj. : 2 µl  
 Signal #1 Phase : ZB-MR1 Signal #2 Phase: ZB-MR2  
 Signal #1 Info : 30Mx0.32mmx 0.50µ Signal #2 Info : 30M x 0.32mm x 0.25µm

Compound	RT#1	RT#2	Resp#1	Resp#2	ng/ml	ng/ml
-----						
System Monitoring Compounds						
1) SA Tetrachlo...	3.404	2.759	237.9E6	132.7E6	48.777	52.905
2) SA Decachlor...	8.583	7.527	167.1E6	156.5E6	45.991	46.968
Target Compounds						
26) L6 AR-1254-1	5.326	4.514	92365455	71158439	497.066m	440.711m
27) L6 AR-1254-2	5.544	4.661	140.8E6	69251431	484.236	470.379m
28) L6 AR-1254-3	5.897	5.043	152.2E6	109.3E6	495.504	467.874
29) L6 AR-1254-4	6.182	5.270	108.6E6	74636935	467.796m	489.698
30) L6 AR-1254-5	6.595	5.674	119.8E6	113.1E6	466.414	489.909
-----						

(f)=RT Delta > 1/2 Window (#)=Amounts differ by > 25% (m)=manual int.

Data Path : Z:\pestpcbsrv\HPCHEM1\ECD\_Q\Data\PQ071323\  
 Data File : PQ062222.D  
 Signal(s) : Signal #1: ECD1A.ch Signal #2: ECD2B.ch  
 Acq On : 13 Jul 2023 22:31  
 Operator : YP\AJ  
 Sample : AR1254CCC500  
 Misc :  
 ALS Vial : 6 Sample Multiplier: 1

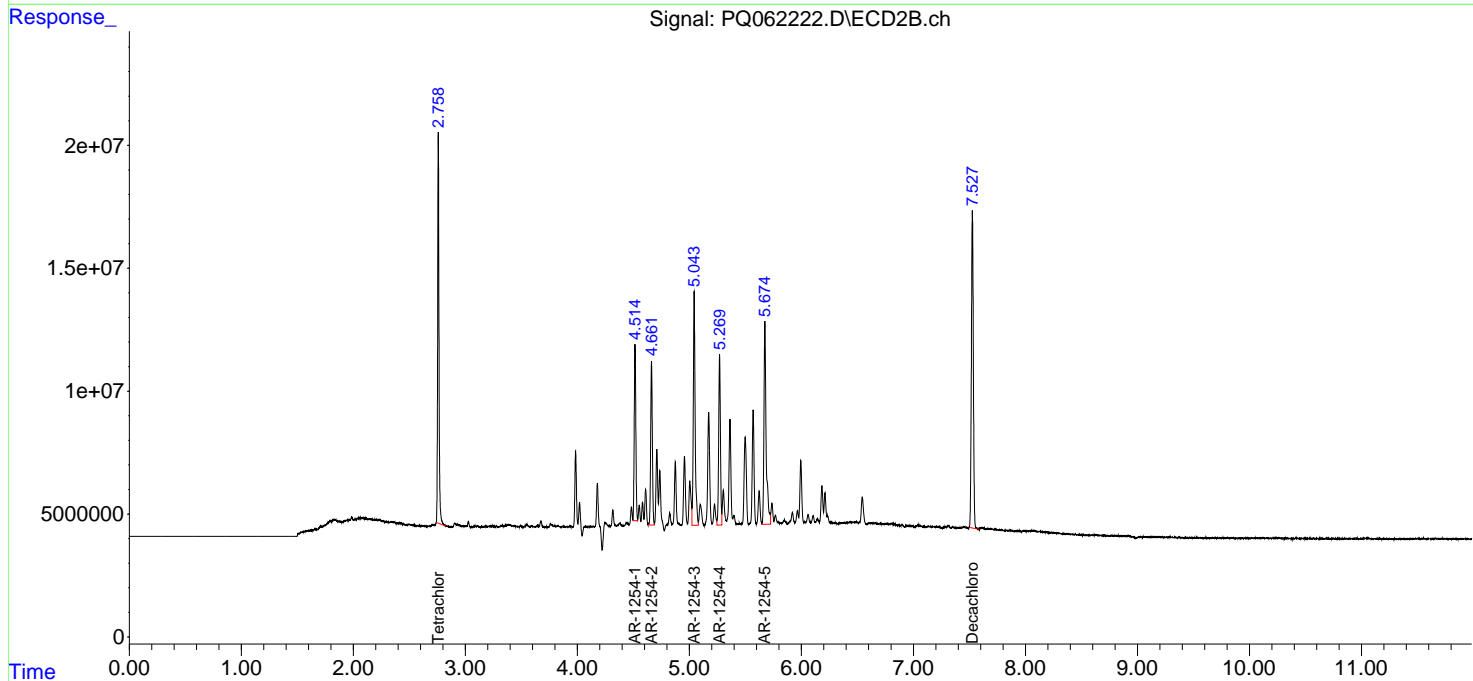
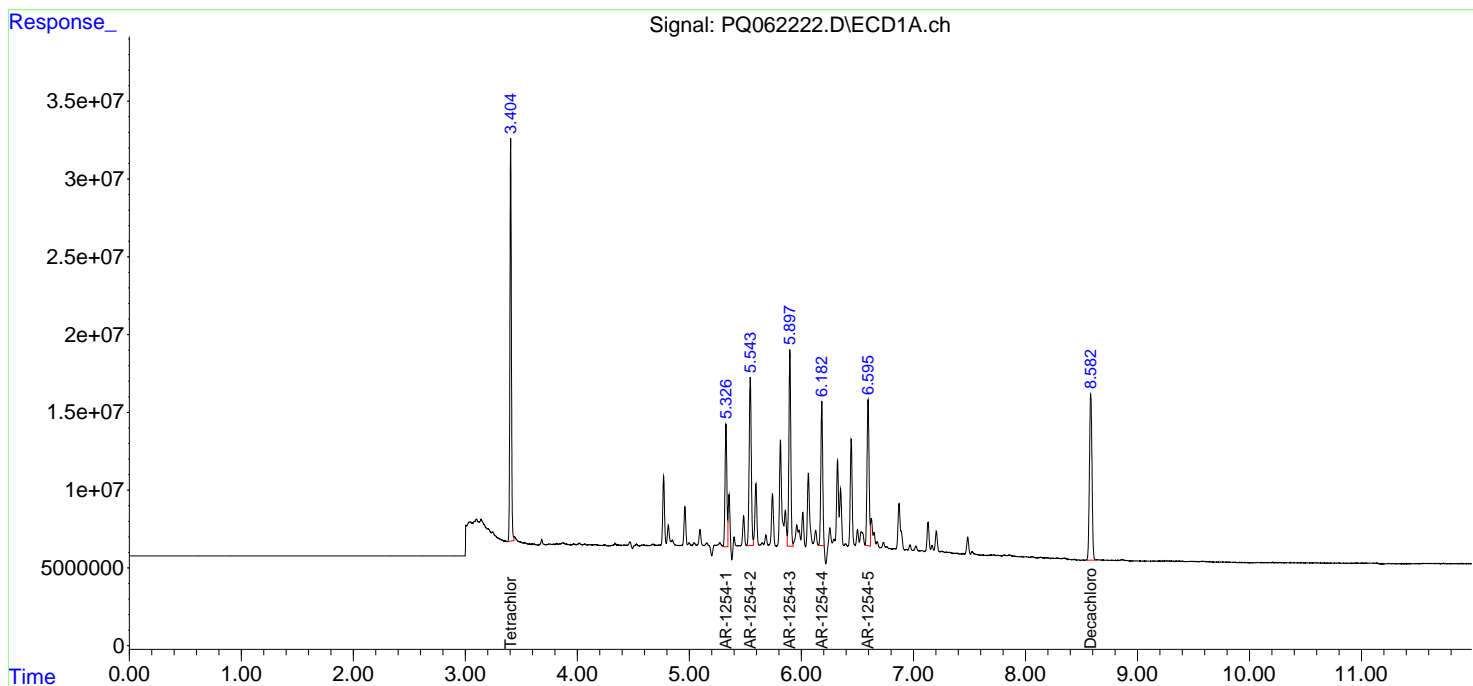
**Instrument :**  
 ECD\_Q  
**ClientSampleId :**  
 AR1254CCC500

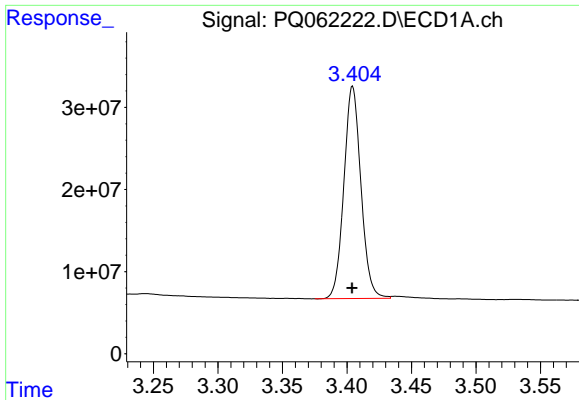
**Manual Integrations**  
**APPROVED**

Reviewed By :Yogesh Patel 07/14/2023  
 Supervised By :Ankita Jodhani 07/14/2023

Integration File signal 1: autoint1.e  
 Integration File signal 2: autoint2.e  
 Quant Time: Jul 13 23:08:06 2023  
 Quant Method : Z:\pestpcbsrv\HPCHEM1\ECD\_Q\Method\PQ070123.M  
 Quant Title : GC EXTRACTABLES  
 QLast Update : Tue Jul 04 05:32:27 2023  
 Response via : Initial Calibration  
 Integrator: ChemStation

Volume Inj. : 2 µl  
 Signal #1 Phase : ZB-MR1 Signal #2 Phase: ZB-MR2  
 Signal #1 Info : 30Mx0.32mmx 0.50µ Signal #2 Info : 30M x 0.32mm x 0.25µm





#1 Tetrachloro-m-xylene

R.T.: 3.404 min  
 Delta R.T.: 0.000 min  
 Response: 237942055  
 Conc: 48.78 ng/ml

Instrument :

ECD\_Q

ClientSampleId :

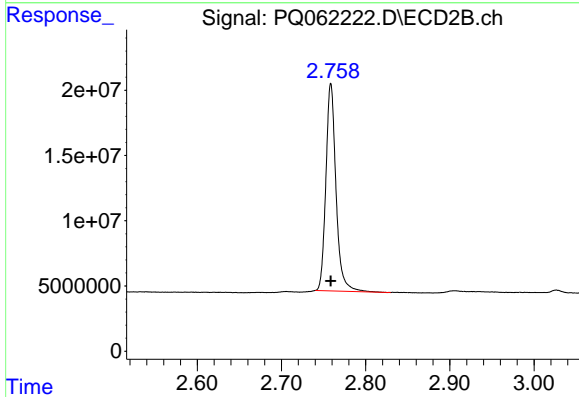
AR1254CCC500

Manual Integrations

APPROVED

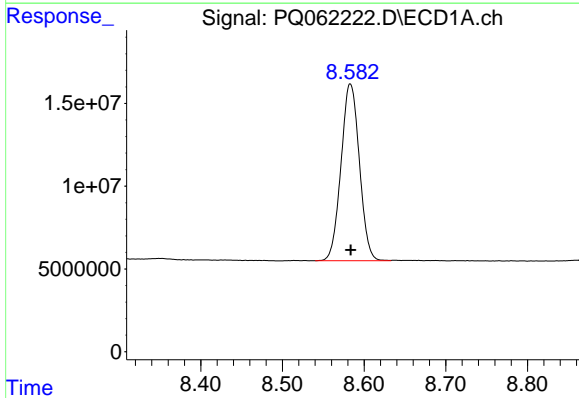
Reviewed By :Yogesh Patel 07/14/2023

Supervised By :Ankita Jodhani 07/14/2023



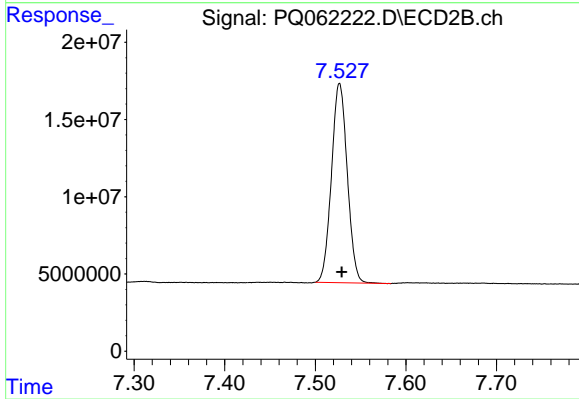
#1 Tetrachloro-m-xylene

R.T.: 2.759 min  
 Delta R.T.: 0.000 min  
 Response: 132745117  
 Conc: 52.91 ng/ml



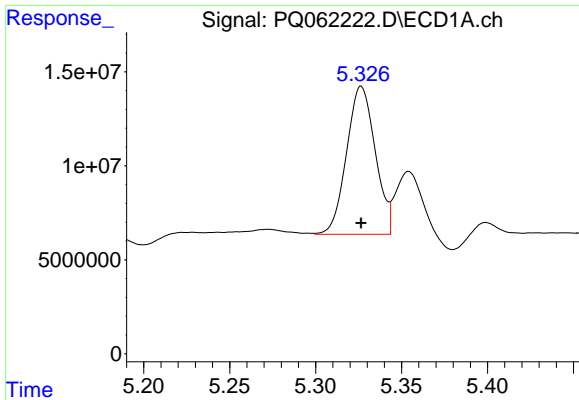
#2 Decachlorobiphenyl

R.T.: 8.583 min  
 Delta R.T.: 0.000 min  
 Response: 167073546  
 Conc: 45.99 ng/ml



#2 Decachlorobiphenyl

R.T.: 7.527 min  
 Delta R.T.: -0.003 min  
 Response: 156505784  
 Conc: 46.97 ng/ml



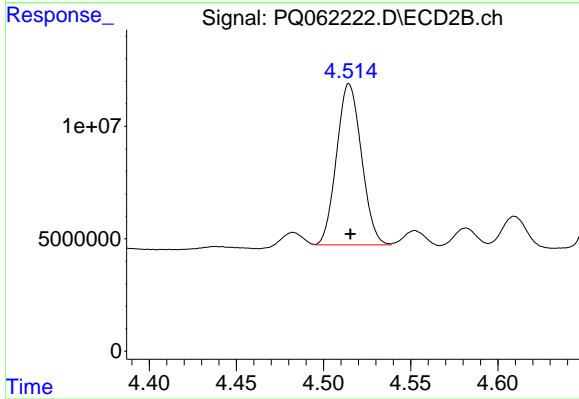
#26 AR-1254-1

R.T.: 5.326 min  
 Delta R.T.: 0.000 min  
 Response: 92365455  
 Conc: 497.07 ng/ml

Instrument :  
 ECD\_Q  
 ClientSampleId :  
 AR1254CCC500

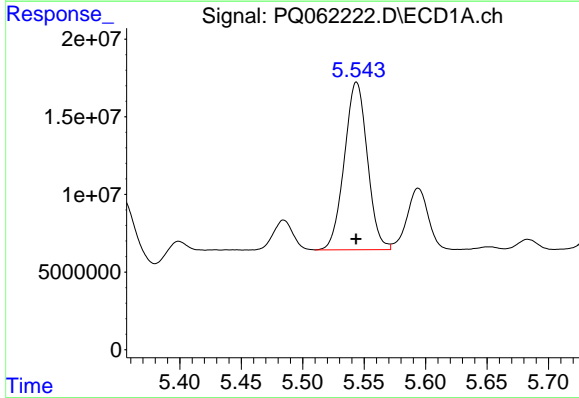
Manual Integrations  
 APPROVED

Reviewed By :Yogesh Patel 07/14/2023  
 Supervised By :Ankita Jodhani 07/14/2023



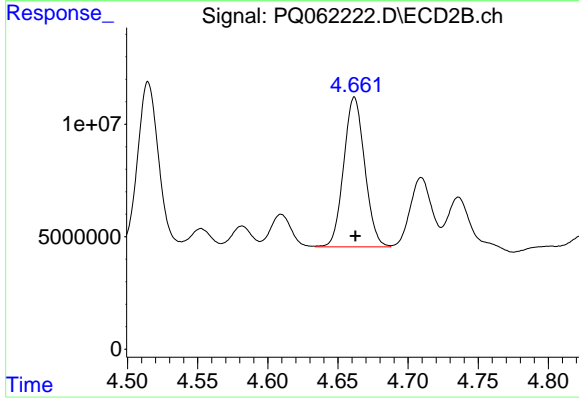
#26 AR-1254-1

R.T.: 4.514 min  
 Delta R.T.: -0.001 min  
 Response: 71158439  
 Conc: 440.71 ng/ml m



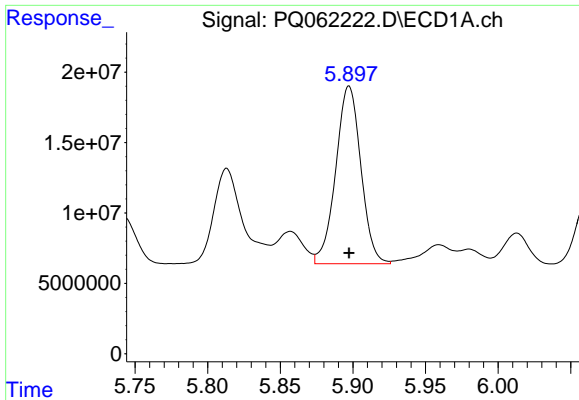
#27 AR-1254-2

R.T.: 5.544 min  
 Delta R.T.: 0.000 min  
 Response: 140773731  
 Conc: 484.24 ng/ml



#27 AR-1254-2

R.T.: 4.661 min  
 Delta R.T.: 0.000 min  
 Response: 69251431  
 Conc: 470.38 ng/ml m



#28 AR-1254-3

R.T.: 5.897 min  
 Delta R.T.: 0.000 min  
 Response: 152189137  
 Conc: 495.50 ng/ml

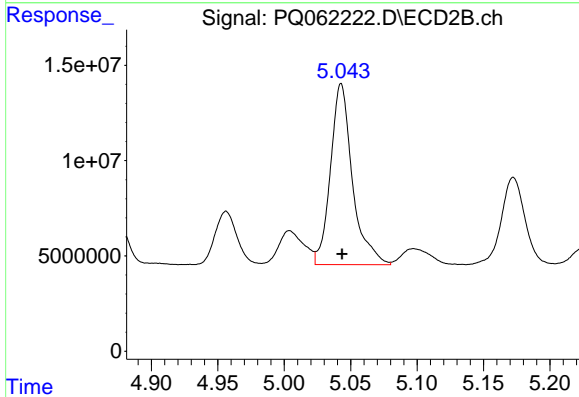
Instrument :

ECD\_Q

ClientSampleId :  
 AR1254CCC500

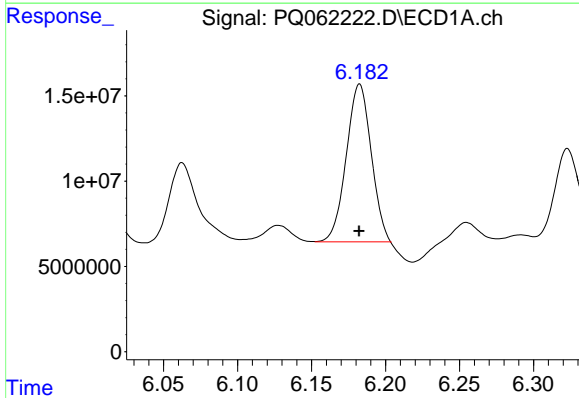
Manual Integrations  
 APPROVED

Reviewed By :Yogesh Patel 07/14/2023  
 Supervised By :Ankita Jodhani 07/14/2023



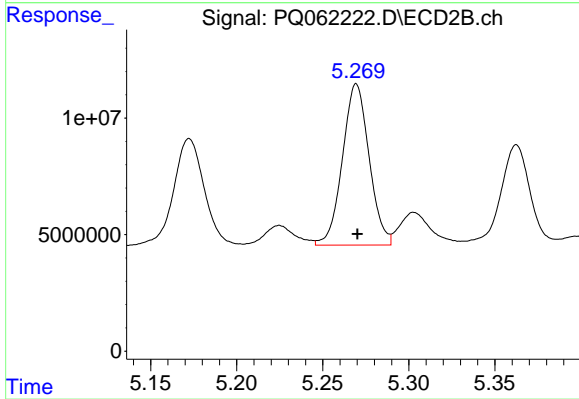
#28 AR-1254-3

R.T.: 5.043 min  
 Delta R.T.: 0.000 min  
 Response: 109342616  
 Conc: 467.87 ng/ml



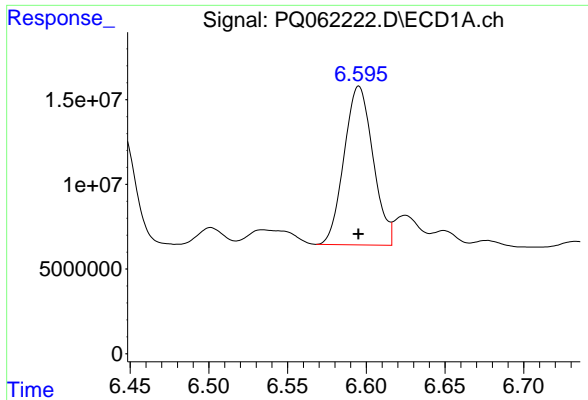
#29 AR-1254-4

R.T.: 6.182 min  
 Delta R.T.: 0.000 min  
 Response: 108618961  
 Conc: 467.80 ng/ml m



#29 AR-1254-4

R.T.: 5.270 min  
 Delta R.T.: 0.000 min  
 Response: 74636935  
 Conc: 489.70 ng/ml



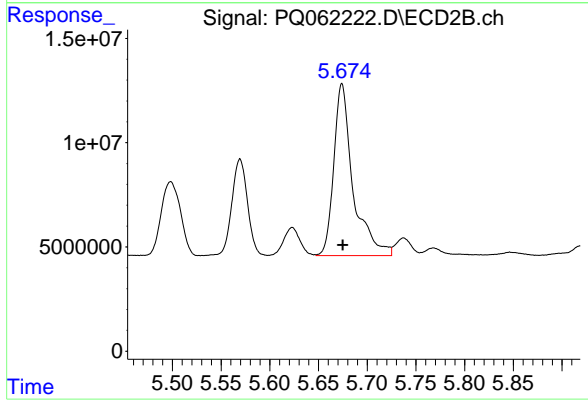
#30 AR-1254-5

R.T.: 6.595 min  
 Delta R.T.: 0.000 min  
 Response: 119807883  
 Conc: 466.41 ng/ml

Instrument :  
 ECD\_Q  
 ClientSampleId :  
 AR1254CCC500

Manual Integrations  
 APPROVED

Reviewed By :Yogesh Patel 07/14/2023  
 Supervised By :Ankita Jodhani 07/14/2023



#30 AR-1254-5

R.T.: 5.674 min  
 Delta R.T.: 0.000 min  
 Response: 113069332  
 Conc: 489.91 ng/ml