

Data Path : Z:\pestpcbsrv\HPCHEM1\ECD_Q\Data\PQ071519\
 Data File : PQ041201.D
 Signal(s) : Signal #1: ECD1A.ch Signal #2: ECD2B.ch
 Acq On : 15 Jul 2019 11:18
 Operator : SM\AJ
 Sample : AR1660CCC500
 Misc :
 ALS Vial : 3 Sample Multiplier: 1

Instrument :
 ECD_Q
 ClientSampled :
 AR1660CCC500

Integration File signal 1: autoint1.e
 Integration File signal 2: autoint2.e
 Quant Time: Jul 15 14:43:21 2019
 Quant Method : Z:\pestpcbsrv\HPCHEM1\ECD_Q\Method\PQ071219.M
 Quant Title : GC EXTRACTABLES
 QLast Update : Sat Jul 13 02:14:45 2019
 Response via : Initial Calibration
 Integrator: ChemStation

Volume Inj. : 2 µl
 Signal #1 Phase : ZB-MR1 Signal #2 Phase: ZB-MR2
 Signal #1 Info : 30Mx0.32mmx 0.50µ Signal #2 Info : 30M x 0.32mm x 0.25µm

Compound	RT#1	RT#2	Resp#1	Resp#2	ng/ml	ng/ml
System Monitoring Compounds						
1) SA Tetrachlo...	5.725	4.772	473.8E6	302.5E6	46.647	46.390
2) SA Decachlor...	12.151	10.550	565.4E6	194.2E6	44.026	41.550
Target Compounds						
3) L1 AR-1016-1	7.170	6.229	176.8E6	109.7E6	444.754	437.305
4) L1 AR-1016-2	7.196	6.251	258.6E6	157.4E6	446.058	441.582
5) L1 AR-1016-3	7.266	6.465	151.1E6	81144148	442.123	436.644
6) L1 AR-1016-4	7.380	6.519	127.6E6	66181314	440.976	434.207
7) L1 AR-1016-5	7.714	6.772	122.3E6	83159967	449.147	436.734
8) L2 AR-1221-1	0.000	5.080	0	8968950	N.D.	121.066 #
9) L2 AR-1221-2	6.113	5.197	19303628	13341911	224.695	249.428
10) L2 AR-1221-3	6.209	5.303	76725227	51577497	290.475	296.425
11) L3 AR-1232-1	6.209	5.303	76725227	51577497	386.218	376.113
12) L3 AR-1232-2	6.853	6.251	114.1E6	157.4E6	1089.560	1081.258
13) L3 AR-1232-3	7.196	6.465	258.6E6	81144148	1119.666	1089.871
14) L3 AR-1232-4	7.380	6.568	127.6E6	79098433	1137.589	1245.704
15) L3 AR-1232-5	7.484	6.772	104.2E6	83159967	1439.923	1212.655
16) L4 AR-1242-1	7.170	6.229	176.8E6	109.7E6	397.281	381.581
17) L4 AR-1242-2	7.196	6.251	258.6E6	157.4E6	391.246	379.555
18) L4 AR-1242-3	7.266	6.465	151.1E6	81144148	393.742	380.222
19) L4 AR-1242-4	7.380	6.568	127.6E6	79098433	382.819	400.222
20) L4 AR-1242-5	8.204	7.182	18075820	62963420	37.685	212.017 #
21) L5 AR-1248-1	7.170	6.229	176.8E6	109.7E6	579.316	561.705
22) L5 AR-1248-2	7.484	6.519	104.2E6	66181314	270.206	259.106
23) L5 AR-1248-3	7.714	6.568	122.3E6	79098433	249.253	303.489
24) L5 AR-1248-4	8.162	6.772	22574912	83159967	37.927	262.067 #
25) L5 AR-1248-5	8.204	7.229	18075820	11745460	30.908	35.184
26) L6 AR-1254-1	8.132	7.182	80715761	62963420	156.508	174.168
27) L6 AR-1254-2	8.369	7.350	93272409	56703324	144.636	185.558 #
28) L6 AR-1254-3	8.764	7.779	58234809	22775630	79.606	45.937 #
29) L6 AR-1254-4	9.067	8.048	42618074	17063546	67.375	50.069 #
30) L6 AR-1254-5	9.505	8.495	359.5E6	183.8E6	622.450	438.261 #
31) L7 AR-1260-1	8.937	7.941	220.2E6	143.6E6	416.284	422.651
32) L7 AR-1260-2	9.208	8.144	327.9E6	190.2E6	437.435	427.681
33) L7 AR-1260-3	9.584	8.310	277.8E6	157.8E6	432.992	423.011
34) L7 AR-1260-4	9.829	8.810	263.9E6	125.9E6	434.899	418.760
35) L7 AR-1260-5	10.178	9.060	647.0E6	317.2E6	453.367	428.362
36) L8 AR-1262-1	9.584	8.535	277.8E6	158.9E6	276.390	292.428
37) L8 AR-1262-2	10.178	9.060	647.0E6	317.2E6	362.871	359.274
38) L8 AR-1262-3	10.535	9.355	376.7E6	72203359	323.789	207.101 #
39) L8 AR-1262-4	10.616	9.422	107.1E6	212.7E6	117.800	346.863 #
40) L8 AR-1262-5	11.330	9.949	183.9E6	74514529	289.577	284.474
41) L9 AR-1268-1	10.535	9.355	376.7E6	72203359	184.350	79.355 #

Data Path : Z:\pestpcbsrv\HPCHEM1\ECD_Q\Data\PQ071519\
 Data File : PQ041201.D
 Signal(s) : Signal #1: ECD1A.ch Signal #2: ECD2B.ch
 Acq On : 15 Jul 2019 11:18
 Operator : SM\AJ
 Sample : AR1660CCC500
 Misc :
 ALS Vial : 3 Sample Multiplier: 1

Instrument :
 ECD_Q
 ClientSampleId :
 AR1660CCC500

Integration File signal 1: autoint1.e
 Integration File signal 2: autoint2.e
 Quant Time: Jul 15 14:43:21 2019
 Quant Method : Z:\pestpcbsrv\HPCHEM1\ECD_Q\Method\PQ071219.M
 Quant Title : GC EXTRACTABLES
 QLast Update : Sat Jul 13 02:14:45 2019
 Response via : Initial Calibration
 Integrator: ChemStation

Volume Inj. : 2 µl
 Signal #1 Phase : ZB-MR1 Signal #2 Phase: ZB-MR2
 Signal #1 Info : 30Mx0.32mmx 0.50µ Signal #2 Info : 30M x 0.32mm x 0.25µm

	Compound	RT#1	RT#2	Resp#1	Resp#2	ng/ml	ng/ml
42)	L9 AR-1268-2	10.616	9.422	107.1E6	212.7E6	58.287	263.208 #
43)	L9 AR-1268-3	0.000	9.639	0	3843958	N.D.	5.890 #
44)	L9 AR-1268-4	11.330	9.949	183.9E6	74514529	279.424	270.521
45)	L9 AR-1268-5	11.782	10.268	50071116	20013384	10.158	11.304

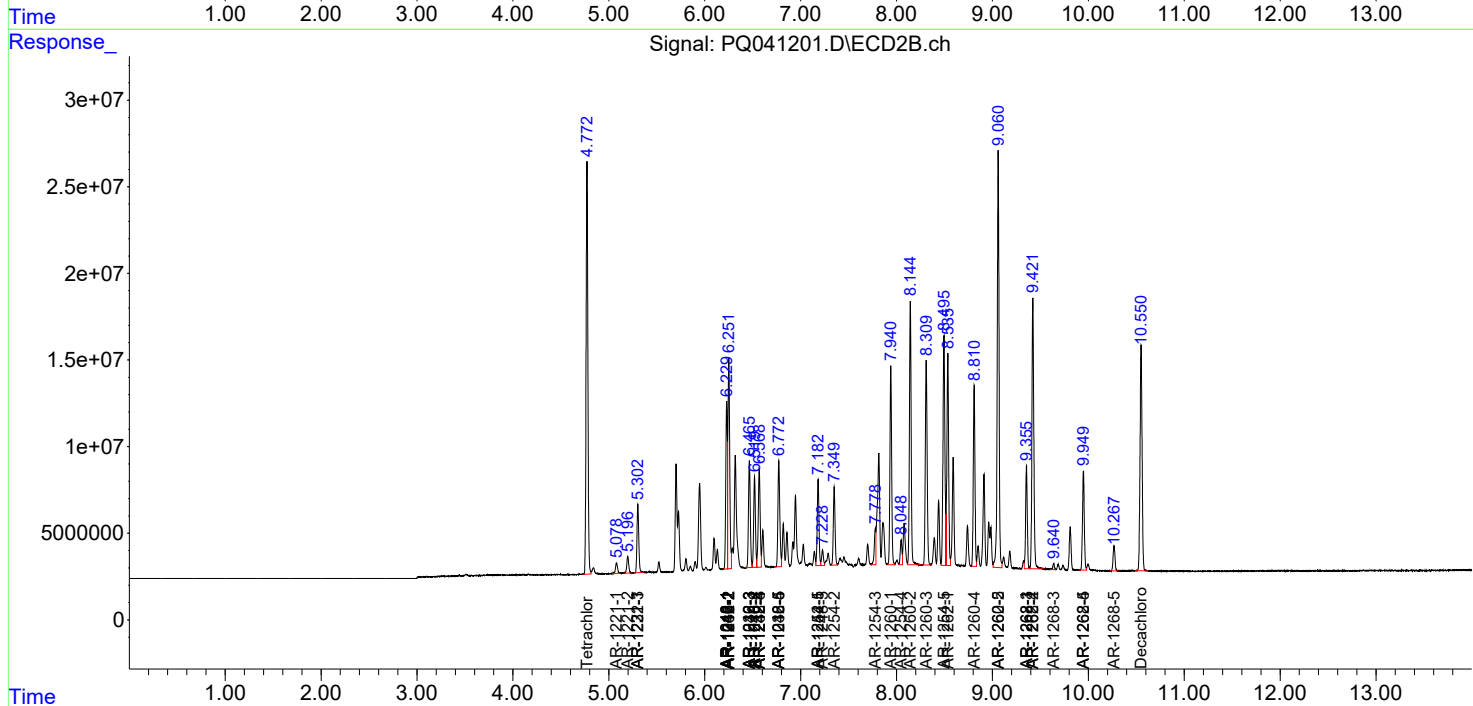
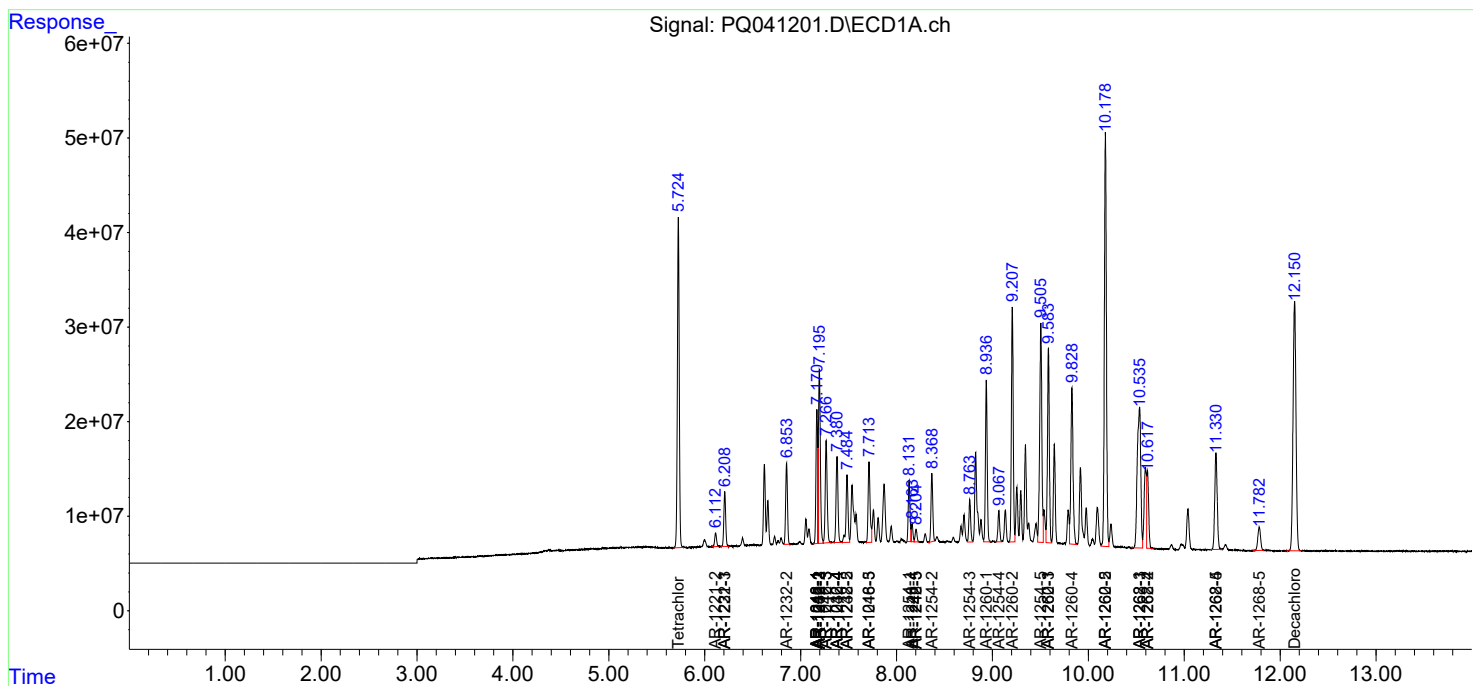
(f)=RT Delta > 1/2 Window (#)=Amounts differ by > 25% (m)=manual int.

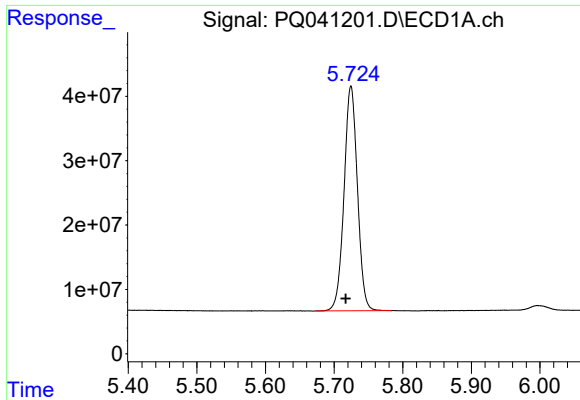
Data Path : Z:\pestpcbsrv\HPCHEM1\ECD_Q\Data\PQ071519\
 Data File : PQ041201.D
 Signal(s) : Signal #1: ECD1A.ch Signal #2: ECD2B.ch
 Acq On : 15 Jul 2019 11:18
 Operator : SM\AJ
 Sample : AR1660CCC500
 Misc :
 ALS Vial : 3 Sample Multiplier: 1

Instrument :
 ECD_Q
 Client Sampled :
 AR1660CCC500

Integration File signal 1: autoint1.e
 Integration File signal 2: autoint2.e
 Quant Time: Jul 15 14:43:21 2019
 Quant Method : Z:\pestpcbsrv\HPCHEM1\ECD_Q\Method\PQ071219.M
 Quant Title : GC EXTRACTABLES
 QLast Update : Sat Jul 13 02:14:45 2019
 Response via : Initial Calibration
 Integrator: ChemStation

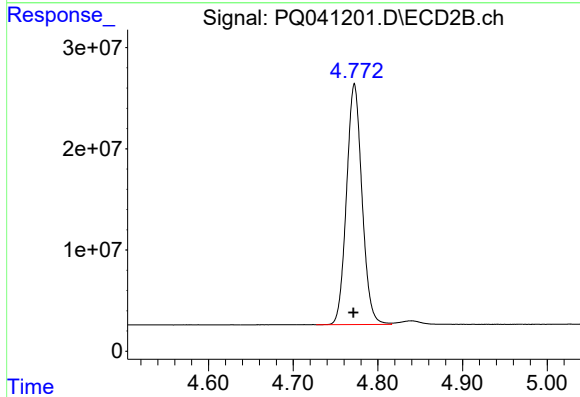
Volume Inj. : 2 µl
 Signal #1 Phase : ZB-MR1 Signal #2 Phase: ZB-MR2
 Signal #1 Info : 30Mx0.32mmx 0.50µ Signal #2 Info : 30M x 0.32mm x 0.25µm



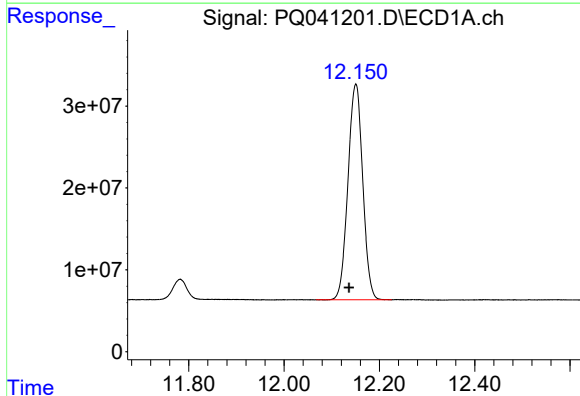


#1 Tetrachloro-m-xylene
 R.T.: 5.725 min
 Delta R.T.: 0.008 min
 Response: 473846706
 Conc: 46.65 ng/ml

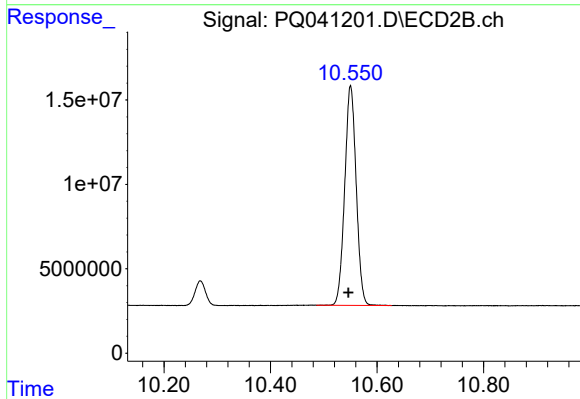
Instrument :
 ECD_Q
 ClientSampleId :
 AR1660CCC500



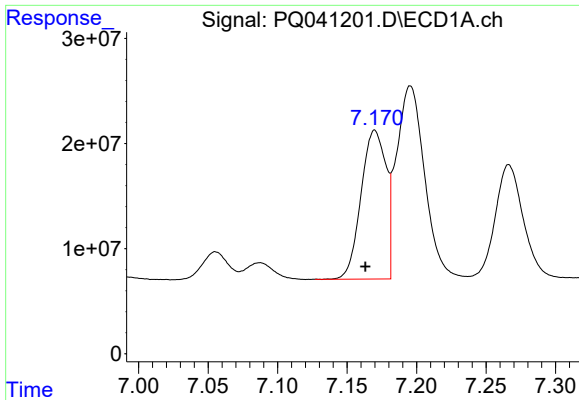
#1 Tetrachloro-m-xylene
 R.T.: 4.772 min
 Delta R.T.: 0.001 min
 Response: 302500974
 Conc: 46.39 ng/ml



#2 Decachlorobiphenyl
 R.T.: 12.151 min
 Delta R.T.: 0.014 min
 Response: 565400972
 Conc: 44.03 ng/ml

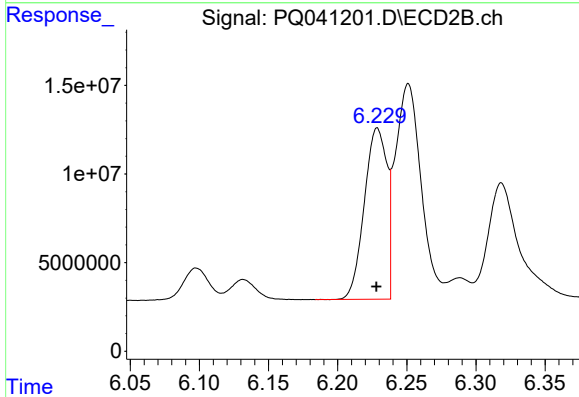


#2 Decachlorobiphenyl
 R.T.: 10.550 min
 Delta R.T.: 0.004 min
 Response: 194245822
 Conc: 41.55 ng/ml

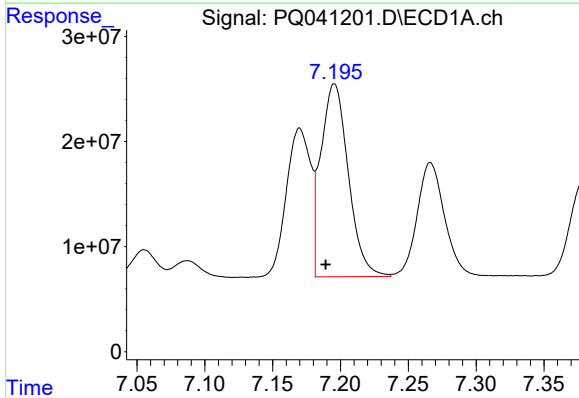


#3 AR-1016-1
 R.T.: 7.170 min
 Delta R.T.: 0.007 min
 Response: 176808894
 Conc: 444.75 ng/ml

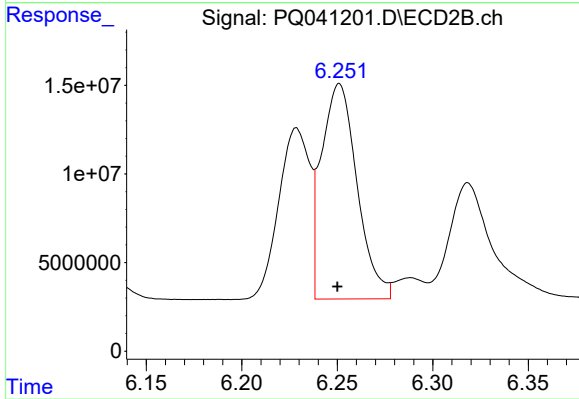
Instrument :
 ECD_Q
ClientSampled :
 AR1660CCC500



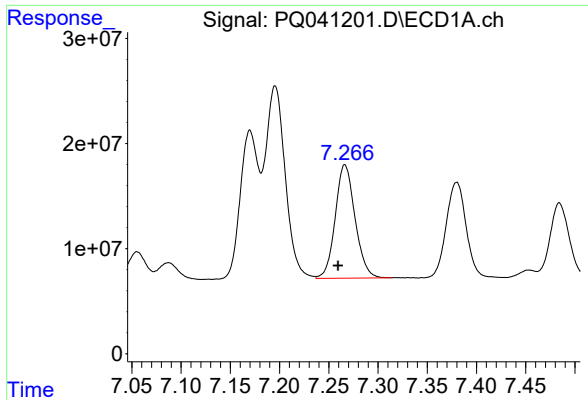
#3 AR-1016-1
 R.T.: 6.229 min
 Delta R.T.: 0.000 min
 Response: 109740223
 Conc: 437.31 ng/ml



#4 AR-1016-2
 R.T.: 7.196 min
 Delta R.T.: 0.006 min
 Response: 258593272
 Conc: 446.06 ng/ml

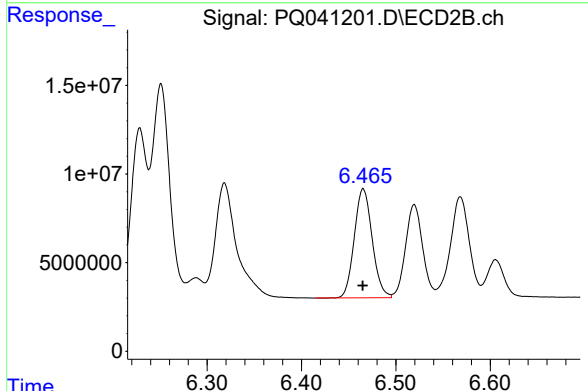


#4 AR-1016-2
 R.T.: 6.251 min
 Delta R.T.: 0.001 min
 Response: 157408664
 Conc: 441.58 ng/ml

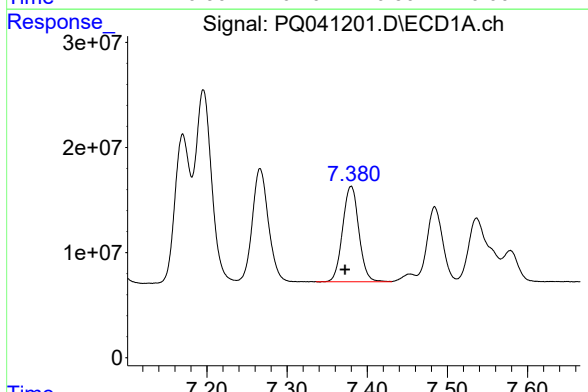


#5 AR-1016-3
 R.T.: 7.266 min
 Delta R.T.: 0.007 min
 Response: 151137666
 Conc: 442.12 ng/ml

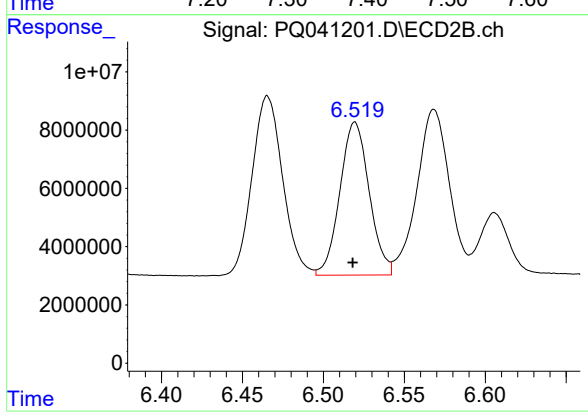
Instrument :
 ECD_Q
ClientSampled :
 AR1660CCC500



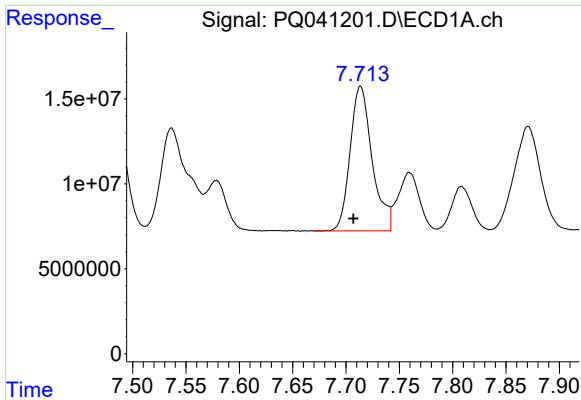
#5 AR-1016-3
 R.T.: 6.465 min
 Delta R.T.: 0.000 min
 Response: 81144148
 Conc: 436.64 ng/ml



#6 AR-1016-4
 R.T.: 7.380 min
 Delta R.T.: 0.007 min
 Response: 127625700
 Conc: 440.98 ng/ml



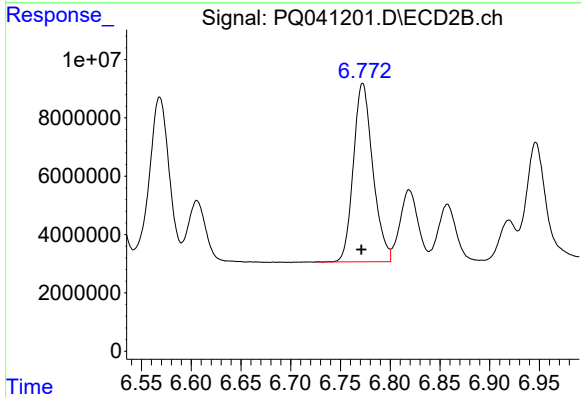
#6 AR-1016-4
 R.T.: 6.519 min
 Delta R.T.: 0.001 min
 Response: 66181314
 Conc: 434.21 ng/ml



#7 AR-1016-5

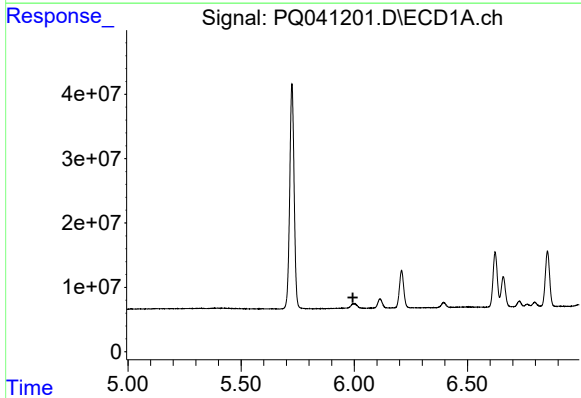
R.T.: 7.714 min
 Delta R.T.: 0.007 min
 Response: 122319306
 Conc: 449.15 ng/ml

Instrument :
 ECD_Q
 ClientSampleId :
 AR1660CCC500



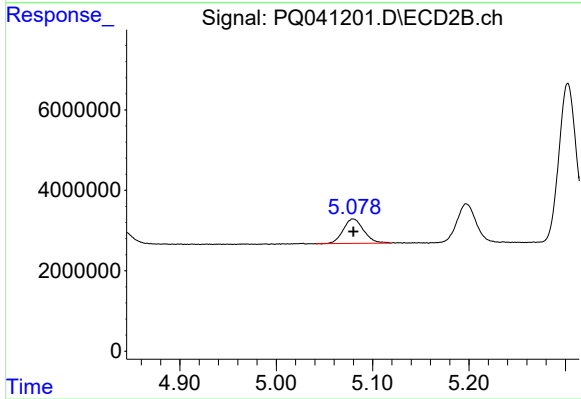
#7 AR-1016-5

R.T.: 6.772 min
 Delta R.T.: 0.001 min
 Response: 83159967
 Conc: 436.73 ng/ml



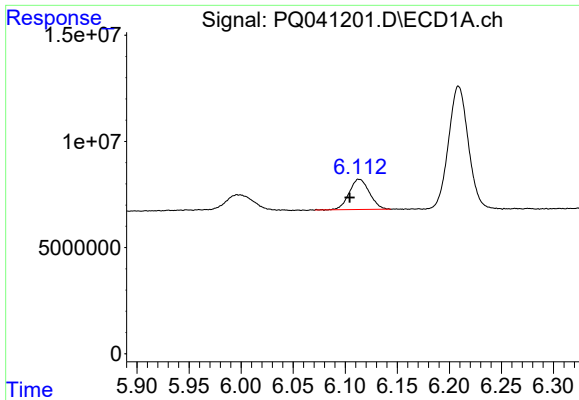
#8 AR-1221-1

R.T.: 0.000 min
 Exp R.T. : 5.994 min
 Response: 0
 Conc: N.D.



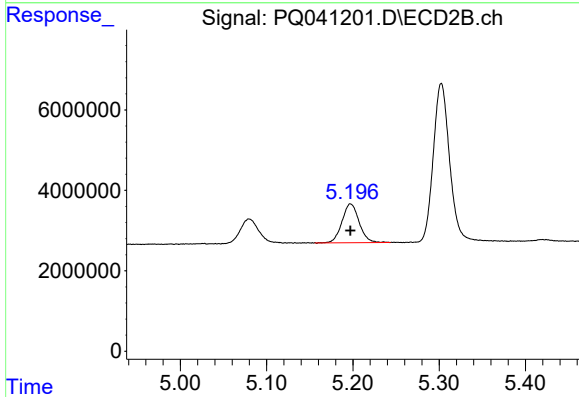
#8 AR-1221-1

R.T.: 5.080 min
 Delta R.T.: 0.000 min
 Response: 8968950
 Conc: 121.07 ng/ml

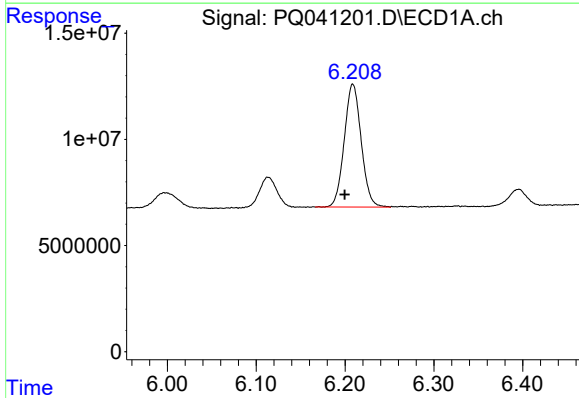


#9 AR-1221-2
 R.T.: 6.113 min
 Delta R.T.: 0.009 min
 Response: 19303628
 Conc: 224.70 ng/ml

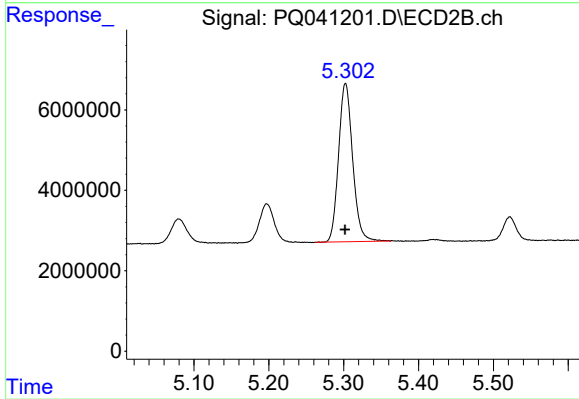
Instrument :
 ECD_Q
 ClientSampleId :
 AR1660CCC500



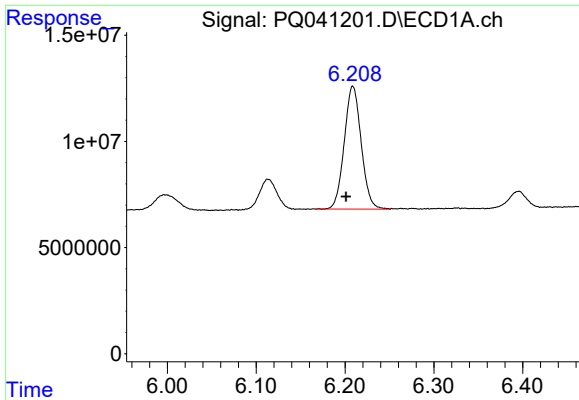
#9 AR-1221-2
 R.T.: 5.197 min
 Delta R.T.: 0.000 min
 Response: 13341911
 Conc: 249.43 ng/ml



#10 AR-1221-3
 R.T.: 6.209 min
 Delta R.T.: 0.009 min
 Response: 76725227
 Conc: 290.48 ng/ml

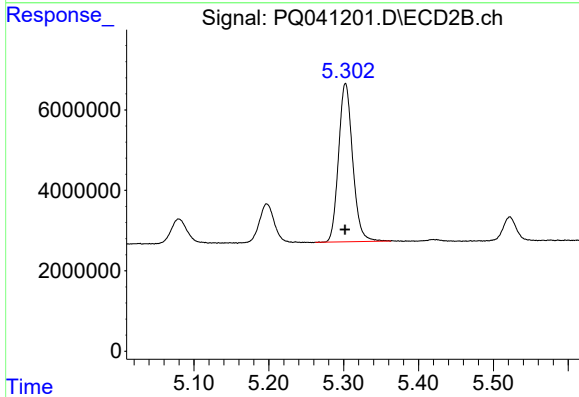


#10 AR-1221-3
 R.T.: 5.303 min
 Delta R.T.: 0.000 min
 Response: 51577497
 Conc: 296.43 ng/ml

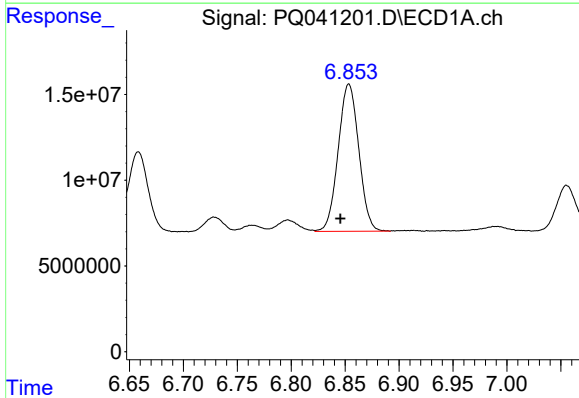


#11 AR-1232-1
 R.T.: 6.209 min
 Delta R.T.: 0.008 min
 Response: 76725227
 Conc: 386.22 ng/ml

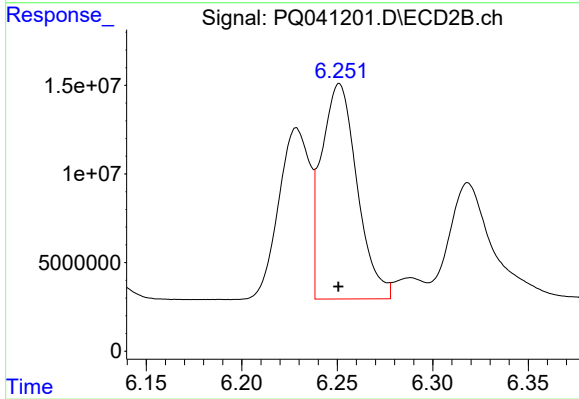
Instrument :
 ECD_Q
ClientSampleId :
 AR1660CCC500



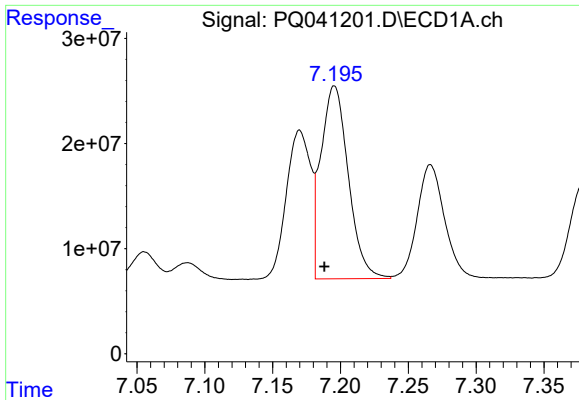
#11 AR-1232-1
 R.T.: 5.303 min
 Delta R.T.: 0.000 min
 Response: 51577497
 Conc: 376.11 ng/ml



#12 AR-1232-2
 R.T.: 6.853 min
 Delta R.T.: 0.008 min
 Response: 114122702
 Conc: 1089.56 ng/ml

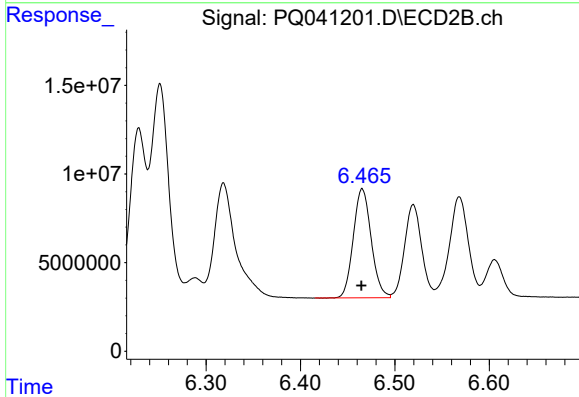


#12 AR-1232-2
 R.T.: 6.251 min
 Delta R.T.: 0.000 min
 Response: 157408664
 Conc: 1081.26 ng/ml

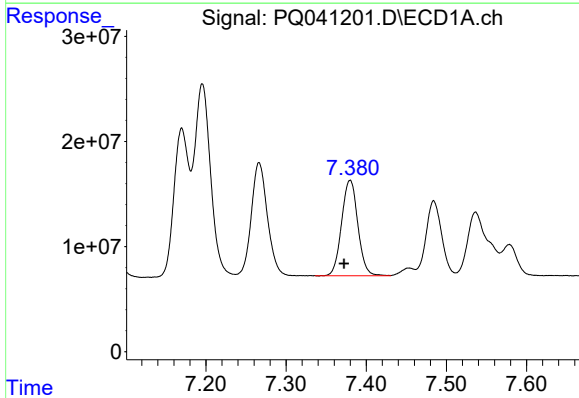


#13 AR-1232-3
 R.T.: 7.196 min
 Delta R.T.: 0.007 min
 Response: 258593272
 Conc: 1119.67 ng/ml

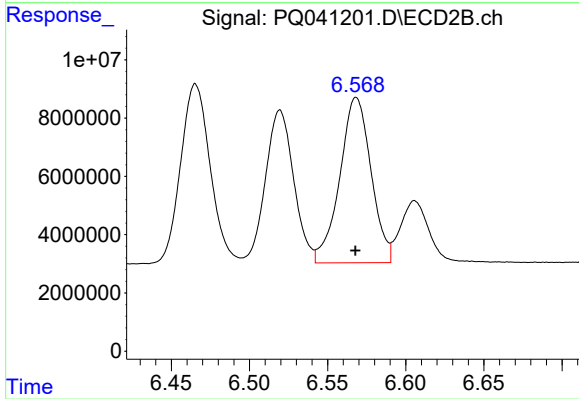
Instrument :
 ECD_Q
ClientSampled :
 AR1660CCC500



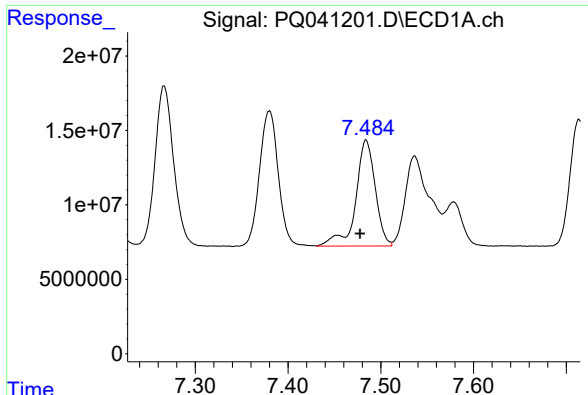
#13 AR-1232-3
 R.T.: 6.465 min
 Delta R.T.: 0.000 min
 Response: 81144148
 Conc: 1089.87 ng/ml



#14 AR-1232-4
 R.T.: 7.380 min
 Delta R.T.: 0.008 min
 Response: 127625700
 Conc: 1137.59 ng/ml



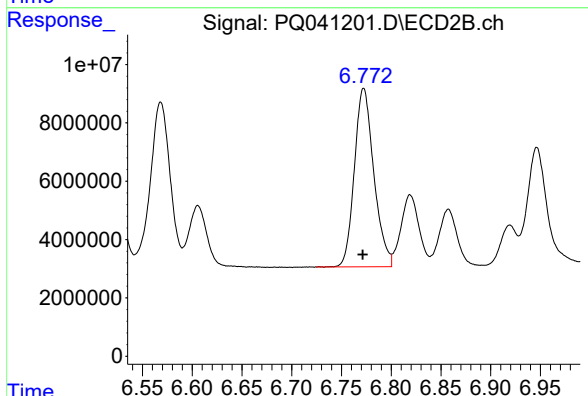
#14 AR-1232-4
 R.T.: 6.568 min
 Delta R.T.: 0.000 min
 Response: 79098433
 Conc: 1245.70 ng/ml



#15 AR-1232-5

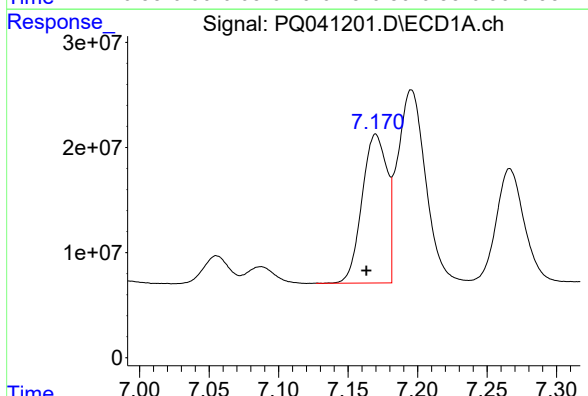
R.T.: 7.484 min
 Delta R.T.: 0.006 min
 Response: 104174269
 Conc: 1439.92 ng/ml

Instrument :
 ECD_Q
 ClientSampleId :
 AR1660CCC500



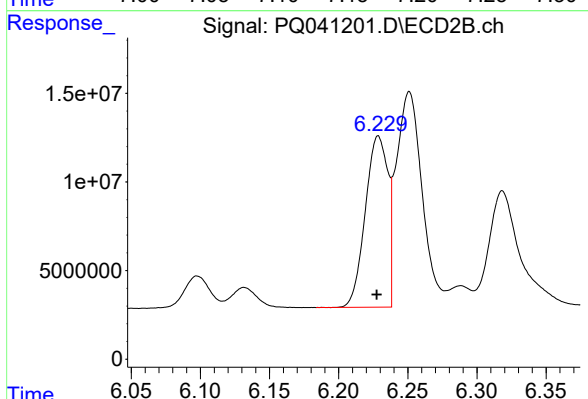
#15 AR-1232-5

R.T.: 6.772 min
 Delta R.T.: 0.000 min
 Response: 83159967
 Conc: 1212.65 ng/ml



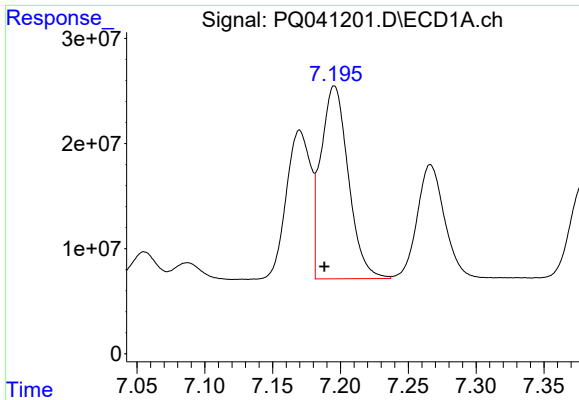
#16 AR-1242-1

R.T.: 7.170 min
 Delta R.T.: 0.007 min
 Response: 176808894
 Conc: 397.28 ng/ml



#16 AR-1242-1

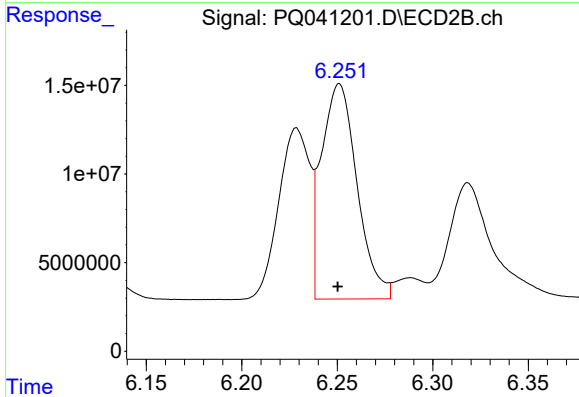
R.T.: 6.229 min
 Delta R.T.: 0.001 min
 Response: 109740223
 Conc: 381.58 ng/ml



#17 AR-1242-2

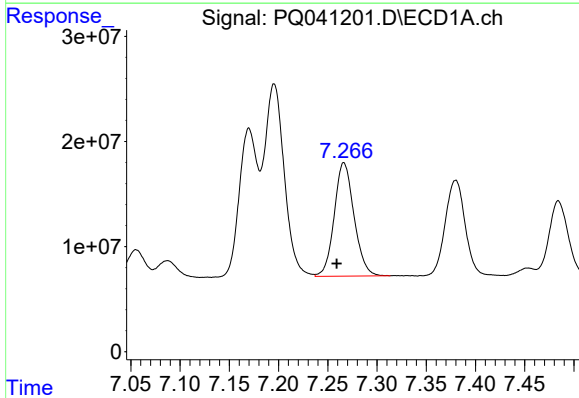
R.T.: 7.196 min
 Delta R.T.: 0.007 min
 Response: 258593272
 Conc: 391.25 ng/ml

Instrument :
 ECD_Q
ClientSampled :
 AR1660CCC500



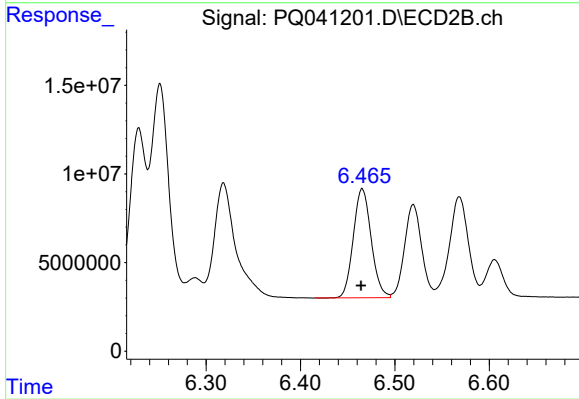
#17 AR-1242-2

R.T.: 6.251 min
 Delta R.T.: 0.000 min
 Response: 157408664
 Conc: 379.56 ng/ml



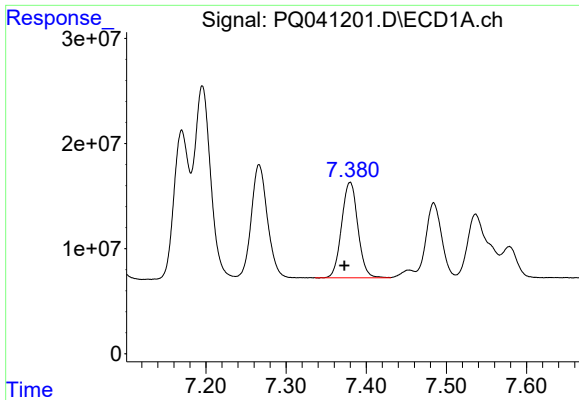
#18 AR-1242-3

R.T.: 7.266 min
 Delta R.T.: 0.007 min
 Response: 151137666
 Conc: 393.74 ng/ml



#18 AR-1242-3

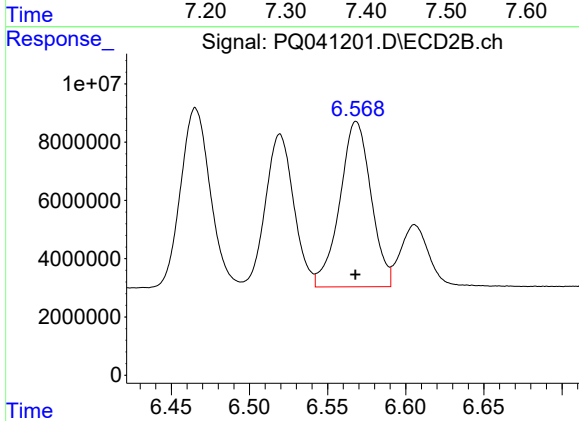
R.T.: 6.465 min
 Delta R.T.: 0.001 min
 Response: 81144148
 Conc: 380.22 ng/ml



#19 AR-1242-4

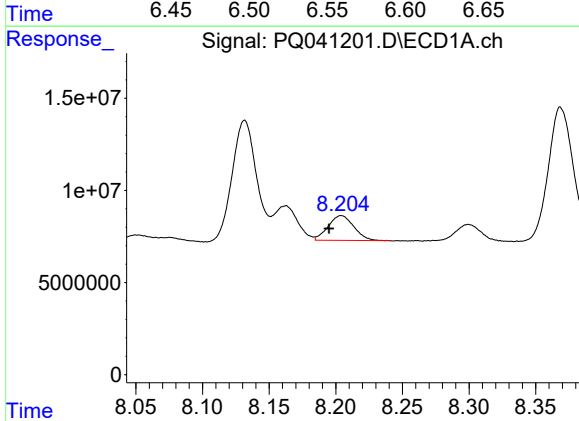
R.T.: 7.380 min
 Delta R.T.: 0.007 min
 Response: 127625700
 Conc: 382.82 ng/ml

Instrument :
 ECD_Q
ClientSampleId :
 AR1660CCC500



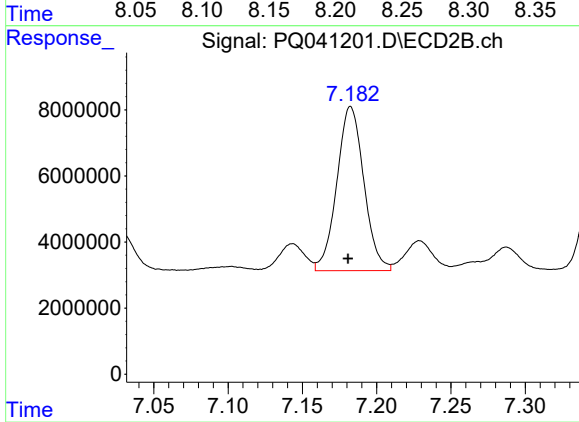
#19 AR-1242-4

R.T.: 6.568 min
 Delta R.T.: 0.000 min
 Response: 79098433
 Conc: 400.22 ng/ml



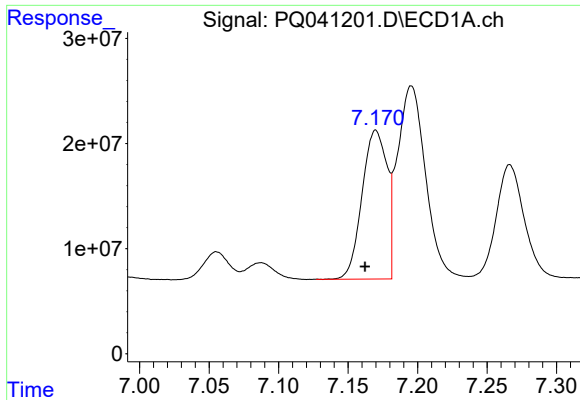
#20 AR-1242-5

R.T.: 8.204 min
 Delta R.T.: 0.009 min
 Response: 18075820
 Conc: 37.69 ng/ml



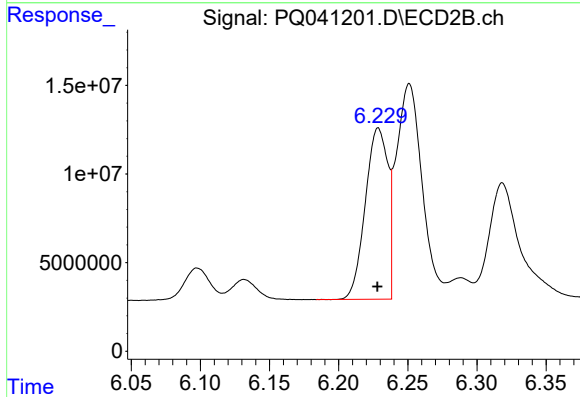
#20 AR-1242-5

R.T.: 7.182 min
 Delta R.T.: 0.002 min
 Response: 62963420
 Conc: 212.02 ng/ml

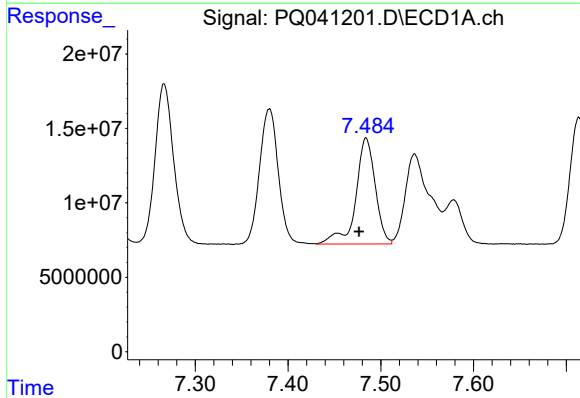


#21 AR-1248-1
 R.T.: 7.170 min
 Delta R.T.: 0.008 min
 Response: 176808894
 Conc: 579.32 ng/ml

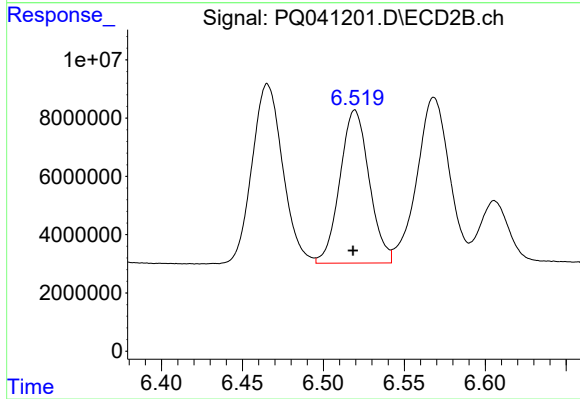
Instrument :
 ECD_Q
ClientSampleId :
 AR1660CCC500



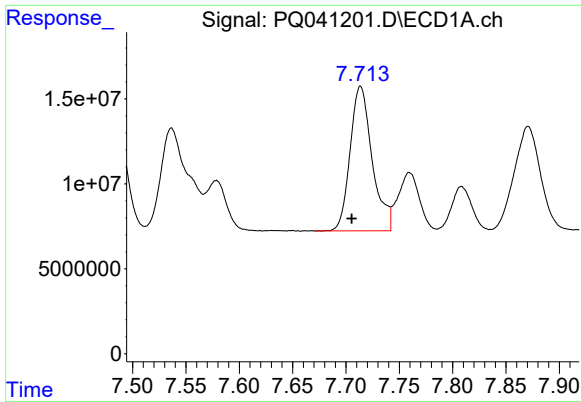
#21 AR-1248-1
 R.T.: 6.229 min
 Delta R.T.: 0.000 min
 Response: 109740223
 Conc: 561.71 ng/ml



#22 AR-1248-2
 R.T.: 7.484 min
 Delta R.T.: 0.008 min
 Response: 104174269
 Conc: 270.21 ng/ml



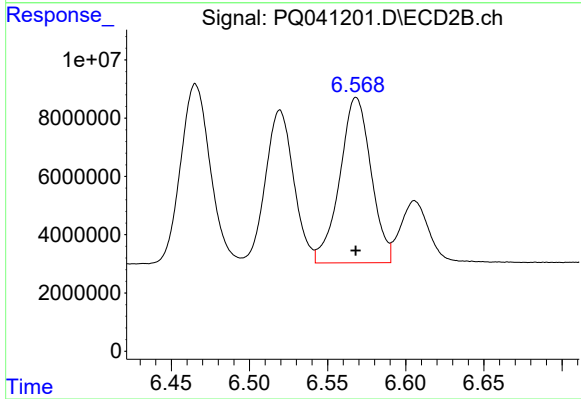
#22 AR-1248-2
 R.T.: 6.519 min
 Delta R.T.: 0.001 min
 Response: 66181314
 Conc: 259.11 ng/ml



#23 AR-1248-3

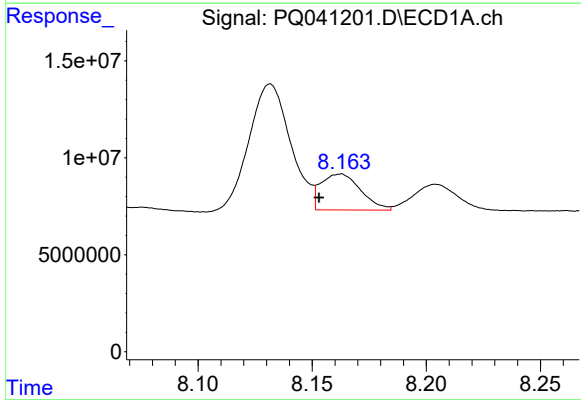
R.T.: 7.714 min
 Delta R.T.: 0.008 min
 Response: 122319306
 Conc: 249.25 ng/ml

Instrument :
 ECD_Q
 ClientSampleId :
 AR1660CCC500



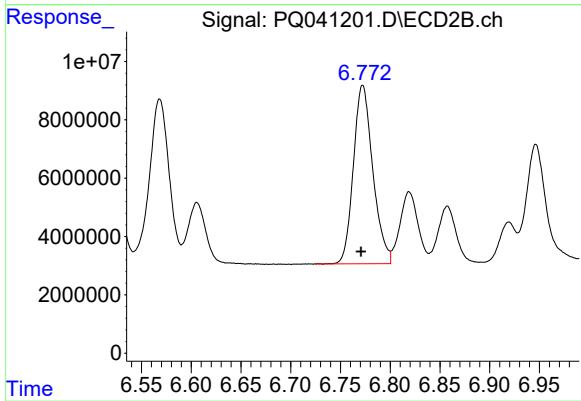
#23 AR-1248-3

R.T.: 6.568 min
 Delta R.T.: 0.000 min
 Response: 79098433
 Conc: 303.49 ng/ml



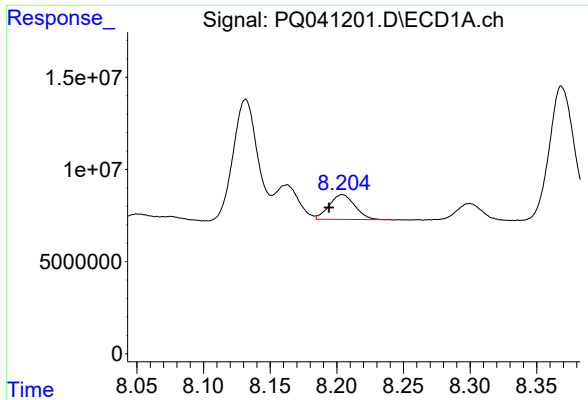
#24 AR-1248-4

R.T.: 8.162 min
 Delta R.T.: 0.009 min
 Response: 22574912
 Conc: 37.93 ng/ml



#24 AR-1248-4

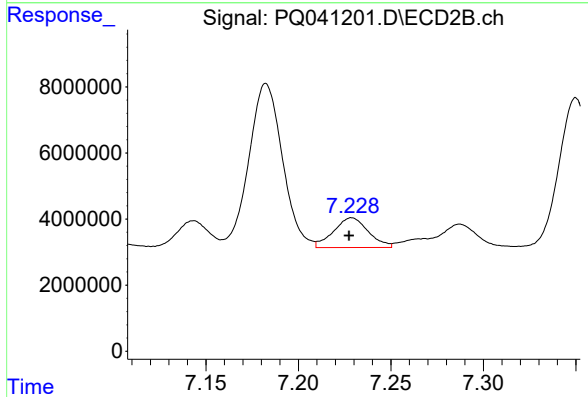
R.T.: 6.772 min
 Delta R.T.: 0.001 min
 Response: 83159967
 Conc: 262.07 ng/ml



#25 AR-1248-5

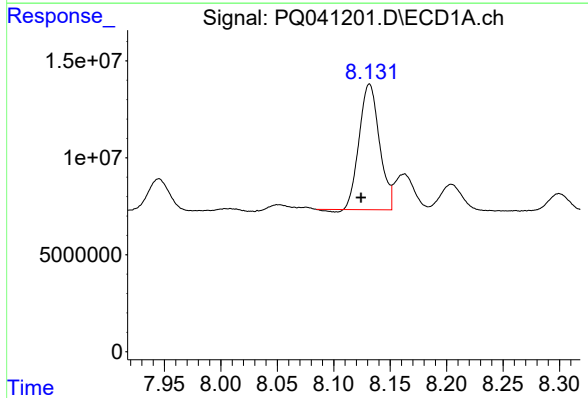
R.T.: 8.204 min
 Delta R.T.: 0.010 min
 Response: 18075820
 Conc: 30.91 ng/ml

Instrument :
 ECD_Q
ClientSampled :
 AR1660CCC500



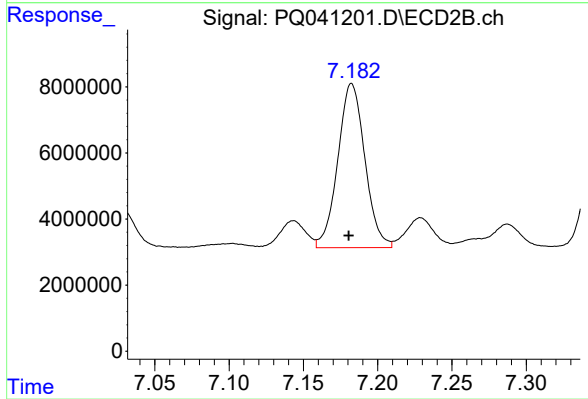
#25 AR-1248-5

R.T.: 7.229 min
 Delta R.T.: 0.001 min
 Response: 11745460
 Conc: 35.18 ng/ml



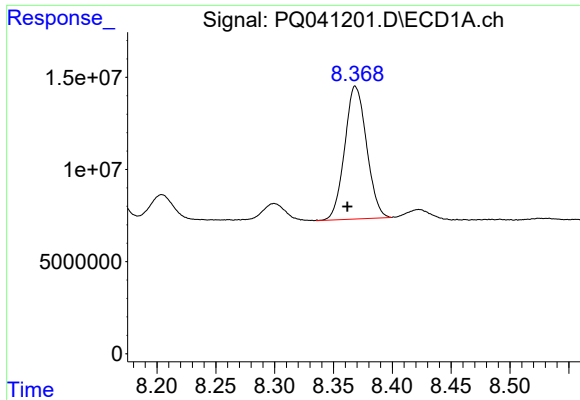
#26 AR-1254-1

R.T.: 8.132 min
 Delta R.T.: 0.007 min
 Response: 80715761
 Conc: 156.51 ng/ml



#26 AR-1254-1

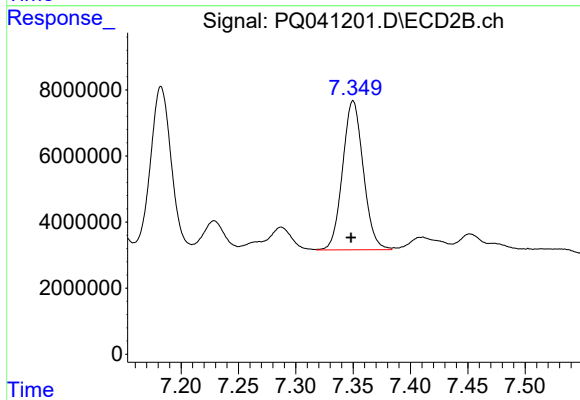
R.T.: 7.182 min
 Delta R.T.: 0.002 min
 Response: 62963420
 Conc: 174.17 ng/ml



#27 AR-1254-2

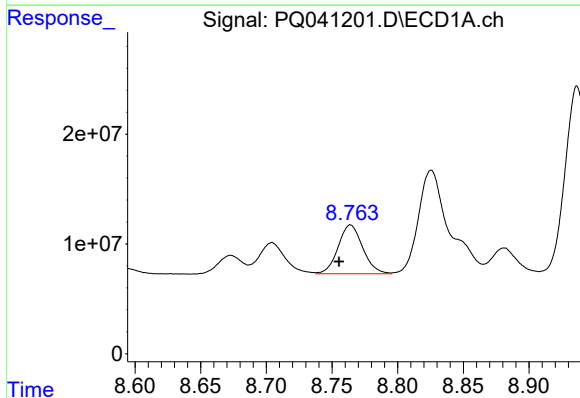
R.T.: 8.369 min
 Delta R.T.: 0.007 min
 Response: 93272409
 Conc: 144.64 ng/ml

Instrument :
 ECD_Q
 ClientSampleId :
 AR1660CCC500



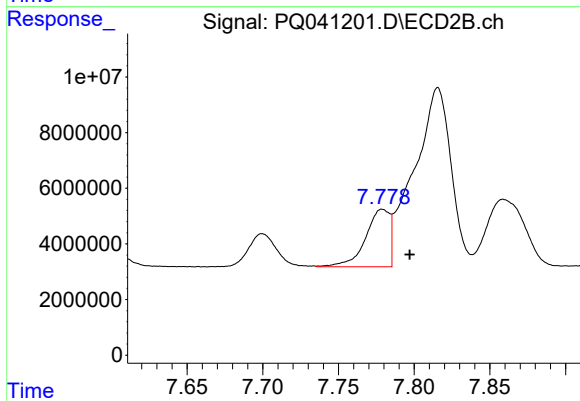
#27 AR-1254-2

R.T.: 7.350 min
 Delta R.T.: 0.002 min
 Response: 56703324
 Conc: 185.56 ng/ml



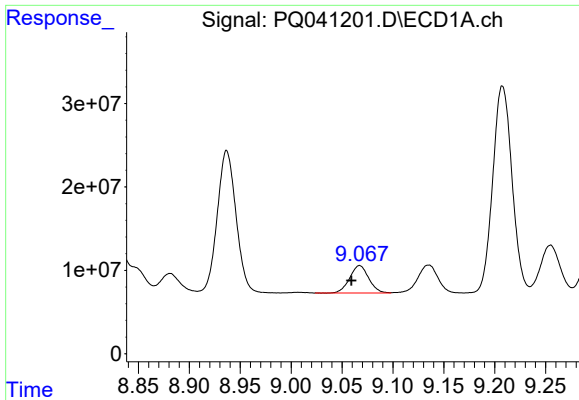
#28 AR-1254-3

R.T.: 8.764 min
 Delta R.T.: 0.009 min
 Response: 58234809
 Conc: 79.61 ng/ml



#28 AR-1254-3

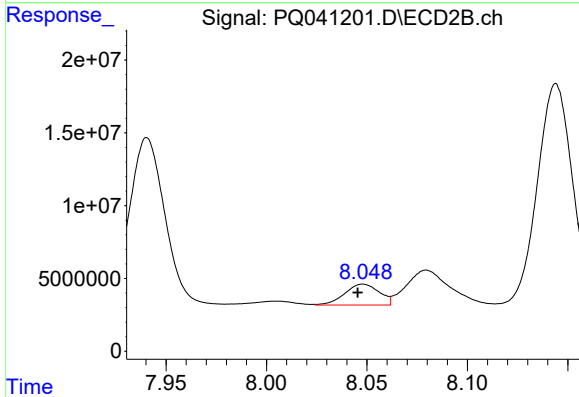
R.T.: 7.779 min
 Delta R.T.: -0.018 min
 Response: 22775630
 Conc: 45.94 ng/ml



#29 AR-1254-4

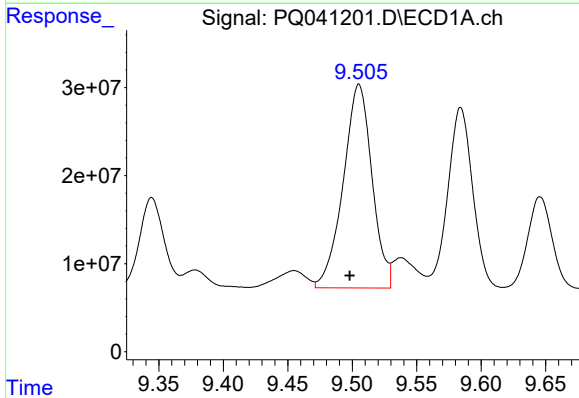
R.T.: 9.067 min
 Delta R.T.: 0.008 min
 Response: 42618074
 Conc: 67.37 ng/ml

Instrument :
 ECD_Q
ClientSampled :
 AR1660CCC500



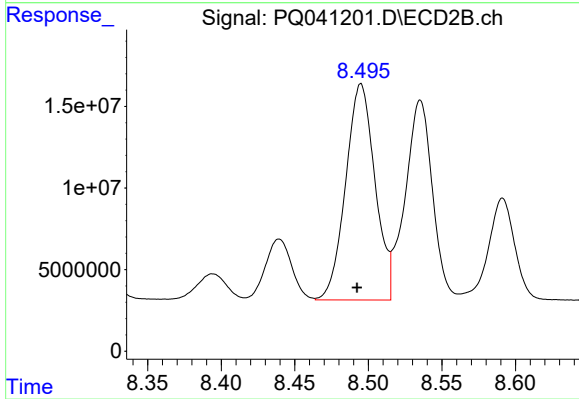
#29 AR-1254-4

R.T.: 8.048 min
 Delta R.T.: 0.003 min
 Response: 17063546
 Conc: 50.07 ng/ml



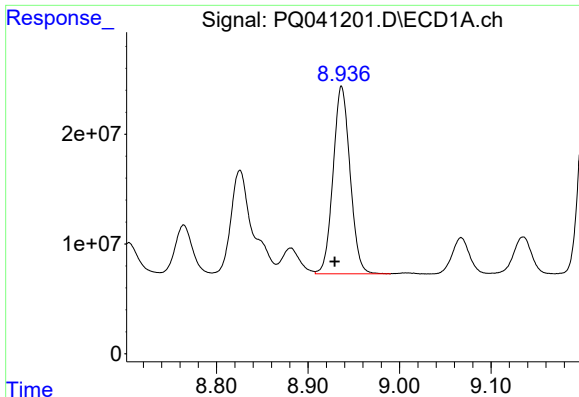
#30 AR-1254-5

R.T.: 9.505 min
 Delta R.T.: 0.007 min
 Response: 359473415
 Conc: 622.45 ng/ml



#30 AR-1254-5

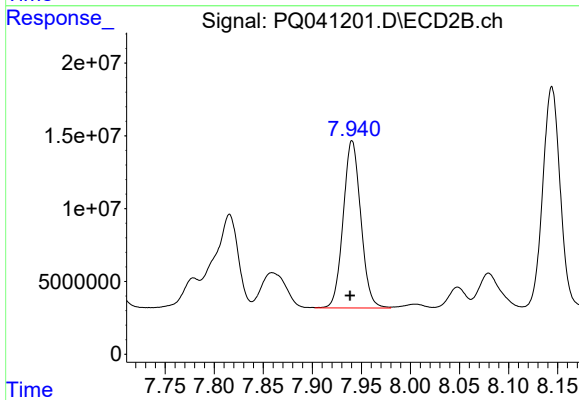
R.T.: 8.495 min
 Delta R.T.: 0.002 min
 Response: 183818274
 Conc: 438.26 ng/ml



#31 AR-1260-1

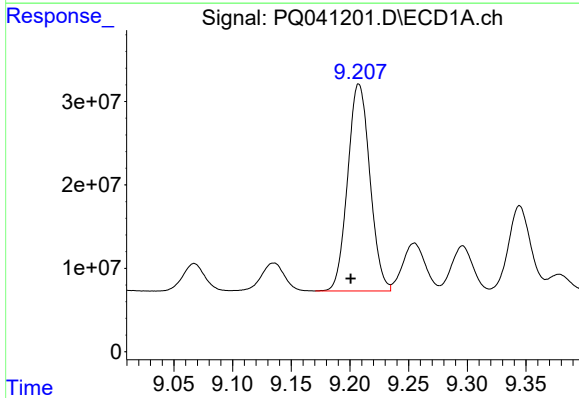
R.T.: 8.937 min
Delta R.T.: 0.008 min
Response: 220162753
Conc: 416.28 ng/ml

Instrument :
ECD_Q
ClientSampleId :
AR1660CCC500



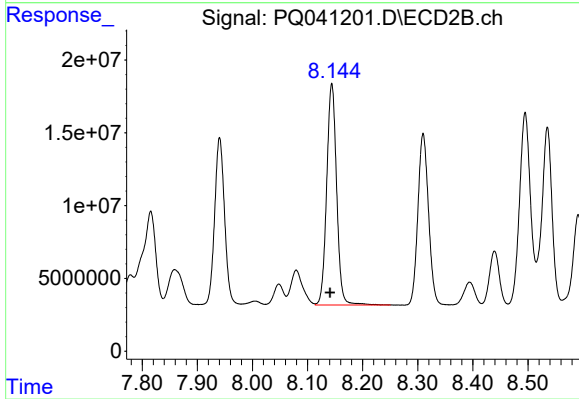
#31 AR-1260-1

R.T.: 7.941 min
Delta R.T.: 0.002 min
Response: 143607907
Conc: 422.65 ng/ml



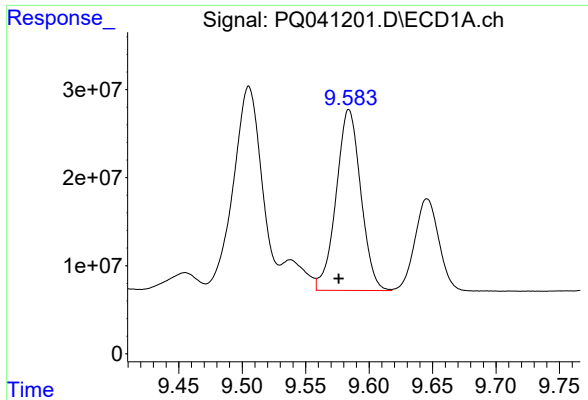
#32 AR-1260-2

R.T.: 9.208 min
Delta R.T.: 0.007 min
Response: 327871958
Conc: 437.43 ng/ml



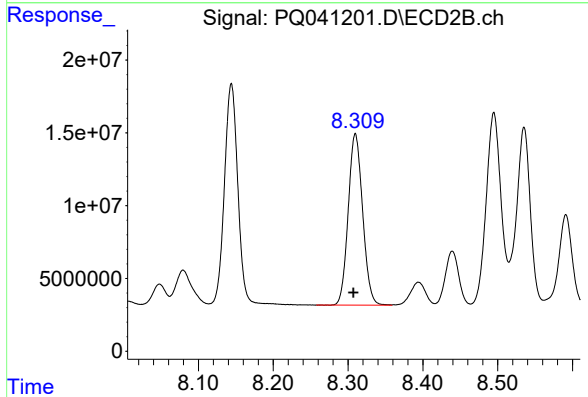
#32 AR-1260-2

R.T.: 8.144 min
Delta R.T.: 0.003 min
Response: 190190054
Conc: 427.68 ng/ml

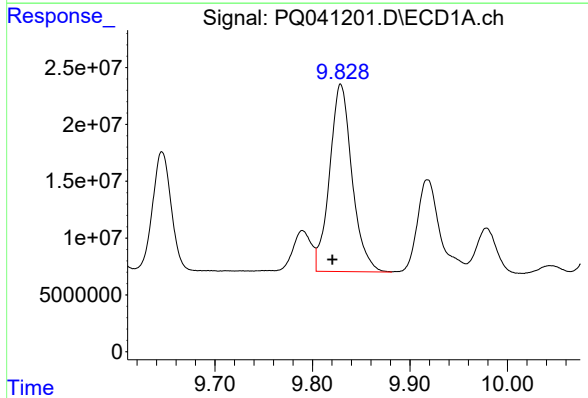


#33 AR-1260-3
 R.T.: 9.584 min
 Delta R.T.: 0.008 min
 Response: 27754707
 Conc: 432.99 ng/ml

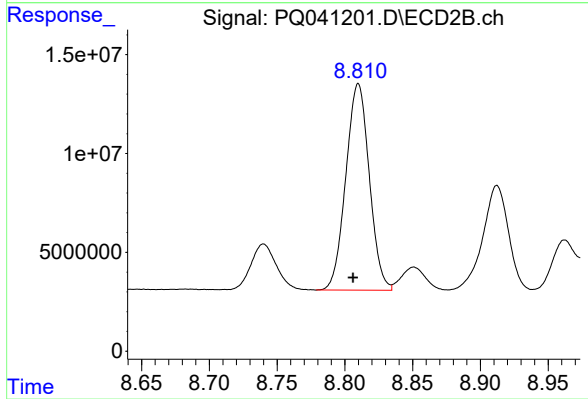
Instrument :
 ECD_Q
 ClientSampleId :
 AR1660CCC500



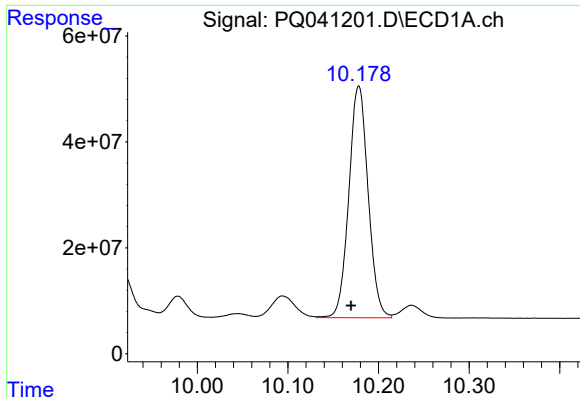
#33 AR-1260-3
 R.T.: 8.310 min
 Delta R.T.: 0.003 min
 Response: 157750480
 Conc: 423.01 ng/ml



#34 AR-1260-4
 R.T.: 9.829 min
 Delta R.T.: 0.009 min
 Response: 263866292
 Conc: 434.90 ng/ml



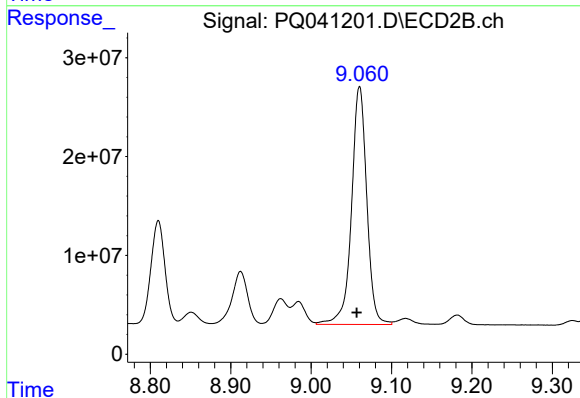
#34 AR-1260-4
 R.T.: 8.810 min
 Delta R.T.: 0.004 min
 Response: 125933569
 Conc: 418.76 ng/ml



#35 AR-1260-5

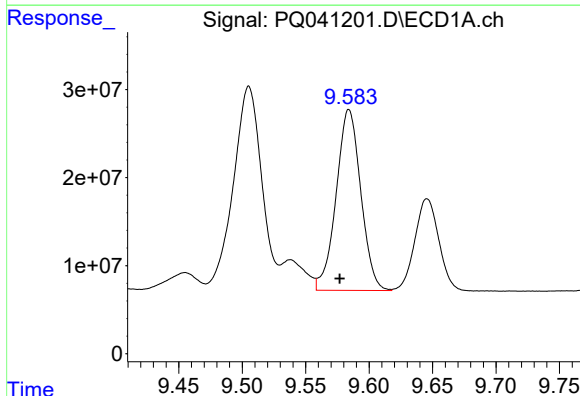
R.T.: 10.178 min
 Delta R.T.: 0.009 min
 Response: 646994510
 Conc: 453.37 ng/ml

Instrument :
 ECD_Q
 ClientSampleId :
 AR1660CCC500



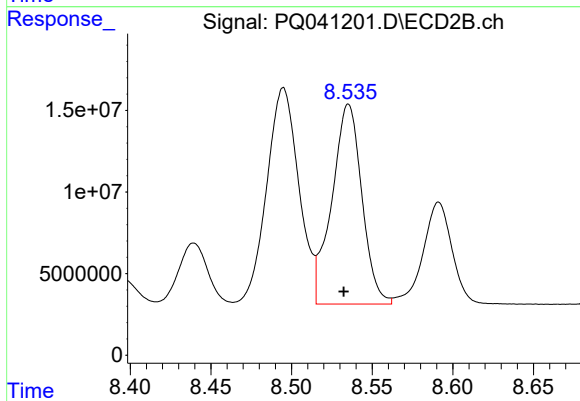
#35 AR-1260-5

R.T.: 9.060 min
 Delta R.T.: 0.004 min
 Response: 317206748
 Conc: 428.36 ng/ml



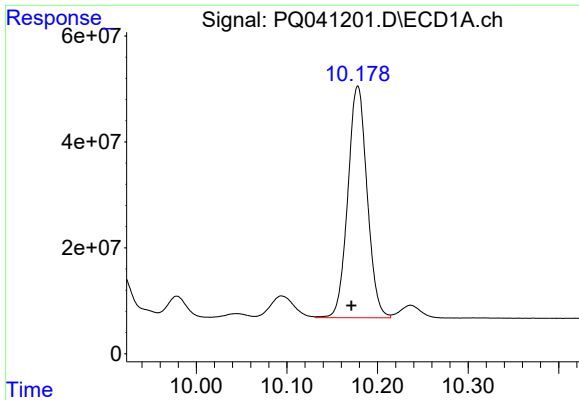
#36 AR-1262-1

R.T.: 9.584 min
 Delta R.T.: 0.007 min
 Response: 277754707
 Conc: 276.39 ng/ml



#36 AR-1262-1

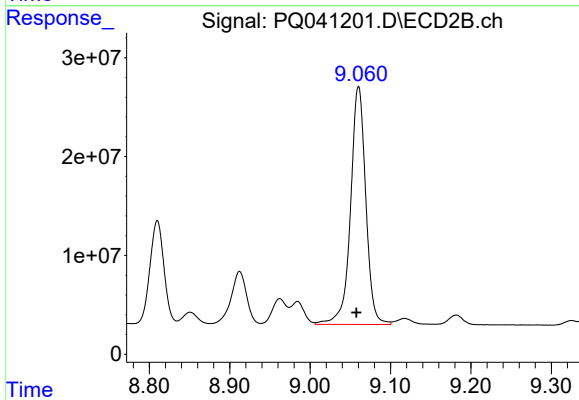
R.T.: 8.535 min
 Delta R.T.: 0.003 min
 Response: 158915537
 Conc: 292.43 ng/ml



#37 AR-1262-2

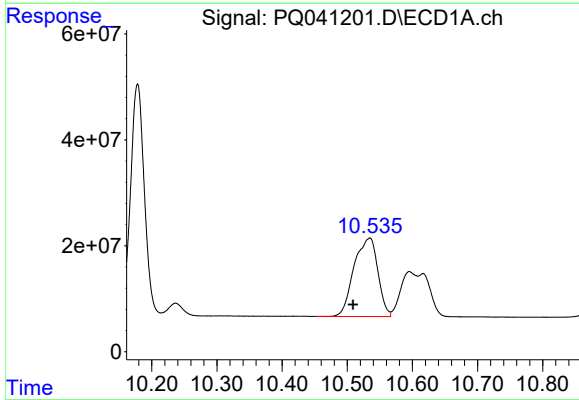
R.T.: 10.178 min
Delta R.T.: 0.007 min
Response: 646994510
Conc: 362.87 ng/ml

Instrument :
ECD_Q
ClientSampleId :
AR1660CCC500



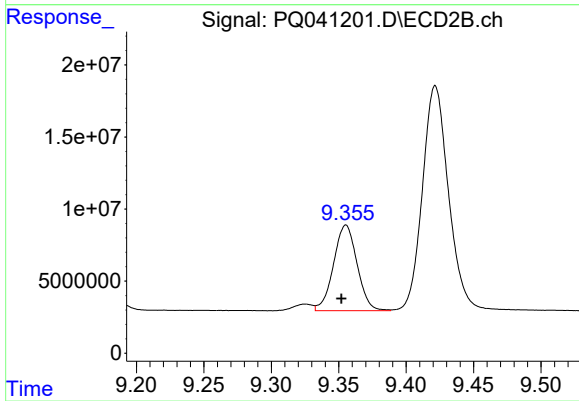
#37 AR-1262-2

R.T.: 9.060 min
Delta R.T.: 0.003 min
Response: 317206748
Conc: 359.27 ng/ml



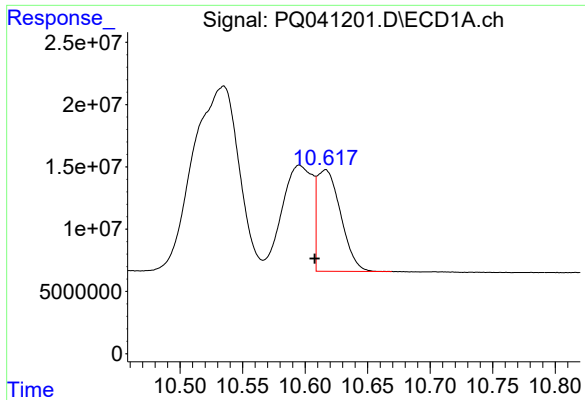
#38 AR-1262-3

R.T.: 10.535 min
Delta R.T.: 0.026 min
Response: 376739290
Conc: 323.79 ng/ml



#38 AR-1262-3

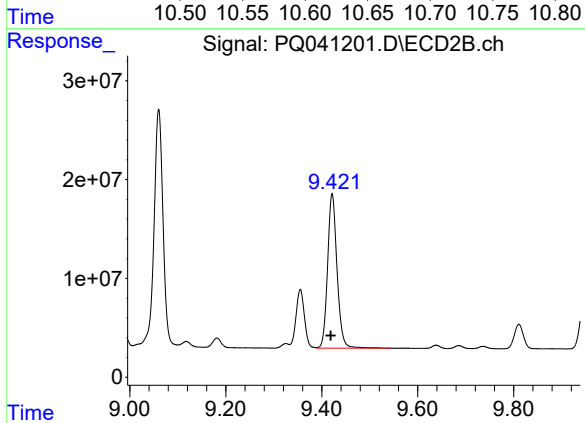
R.T.: 9.355 min
Delta R.T.: 0.003 min
Response: 72203359
Conc: 207.10 ng/ml



#39 AR-1262-4

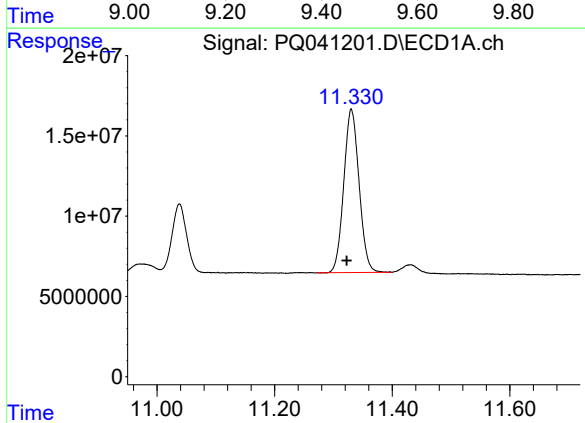
R.T.: 10.616 min
 Delta R.T.: 0.009 min
 Response: 107056760
 Conc: 117.80 ng/ml

Instrument :
 ECD_Q
ClientSampled :
 AR1660CCC500



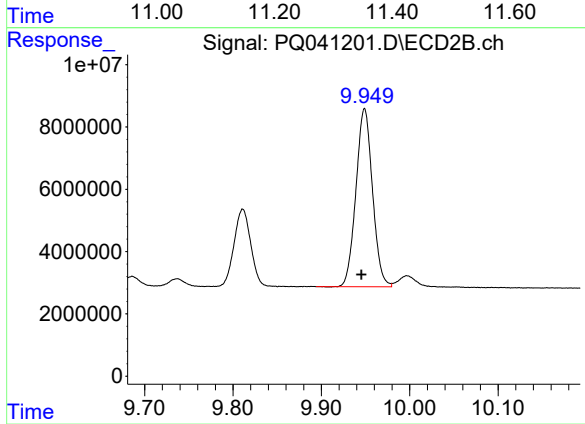
#39 AR-1262-4

R.T.: 9.422 min
 Delta R.T.: 0.003 min
 Response: 212689829
 Conc: 346.86 ng/ml



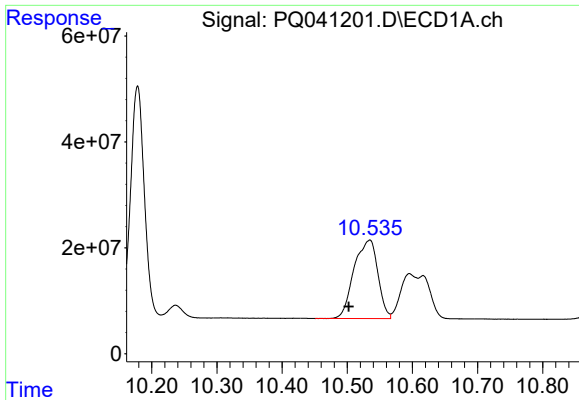
#40 AR-1262-5

R.T.: 11.330 min
 Delta R.T.: 0.008 min
 Response: 183898020
 Conc: 289.58 ng/ml



#40 AR-1262-5

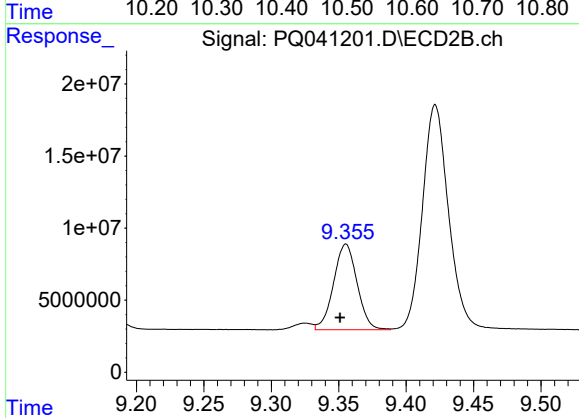
R.T.: 9.949 min
 Delta R.T.: 0.003 min
 Response: 74514529
 Conc: 284.47 ng/ml



#41 AR-1268-1

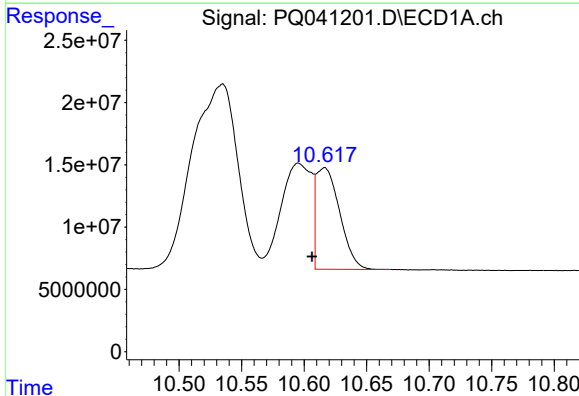
R.T.: 10.535 min
 Delta R.T.: 0.032 min
 Response: 376739290
 Conc: 184.35 ng/ml

Instrument :
 ECD_Q
 ClientSampleId :
 AR1660CCC500



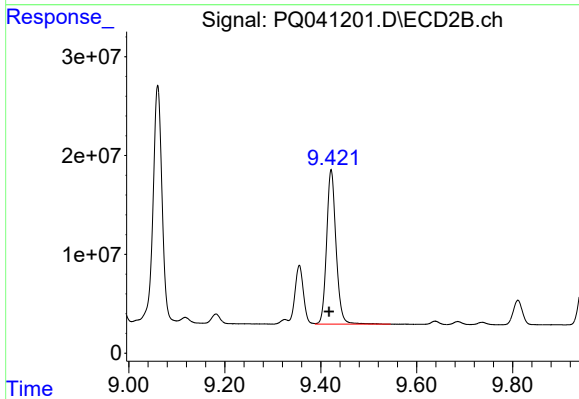
#41 AR-1268-1

R.T.: 9.355 min
 Delta R.T.: 0.004 min
 Response: 72203359
 Conc: 79.36 ng/ml



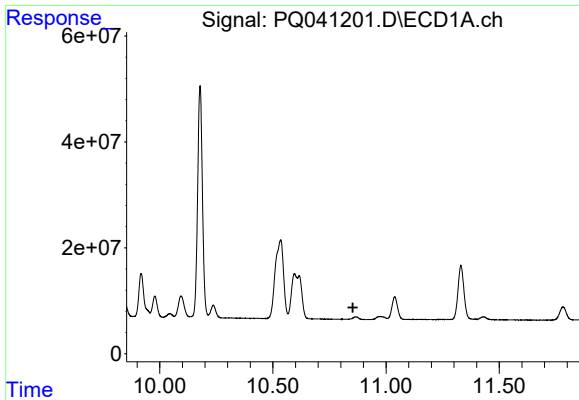
#42 AR-1268-2

R.T.: 10.616 min
 Delta R.T.: 0.010 min
 Response: 107056760
 Conc: 58.29 ng/ml



#42 AR-1268-2

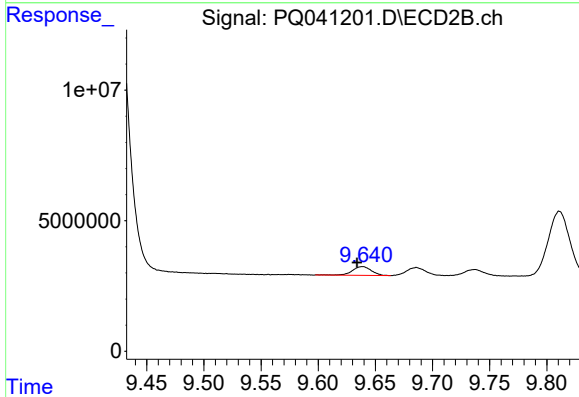
R.T.: 9.422 min
 Delta R.T.: 0.004 min
 Response: 212689829
 Conc: 263.21 ng/ml



#43 AR-1268-3

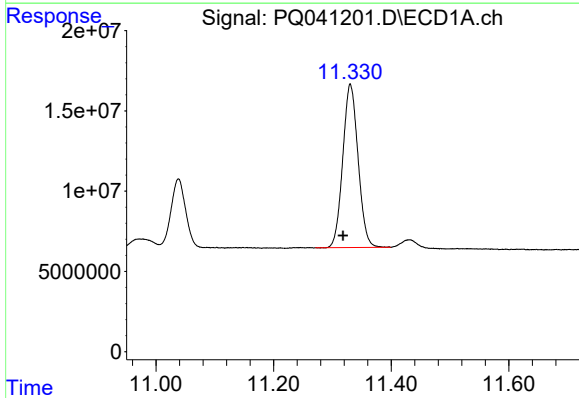
R.T.: 0.000 min
 Exp R.T.: 10.853 min
 Response: 0
 Conc: N.D.

Instrument :
 ECD_Q
 ClientSampleId :
 AR1660CCC500



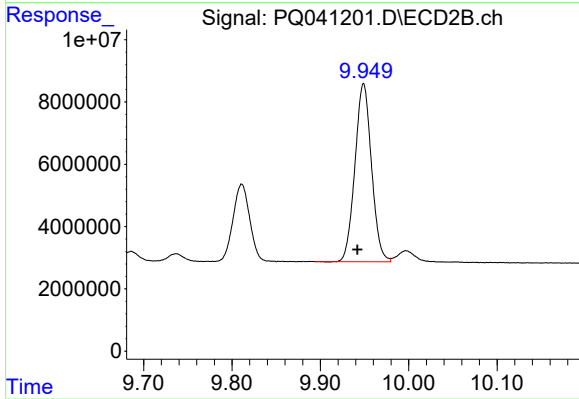
#43 AR-1268-3

R.T.: 9.639 min
 Delta R.T.: 0.005 min
 Response: 3843958
 Conc: 5.89 ng/ml



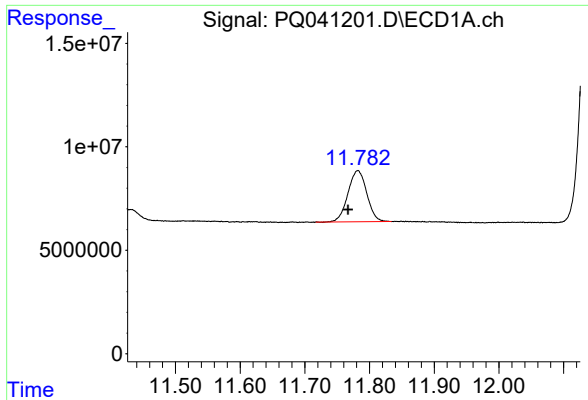
#44 AR-1268-4

R.T.: 11.330 min
 Delta R.T.: 0.012 min
 Response: 183898020
 Conc: 279.42 ng/ml



#44 AR-1268-4

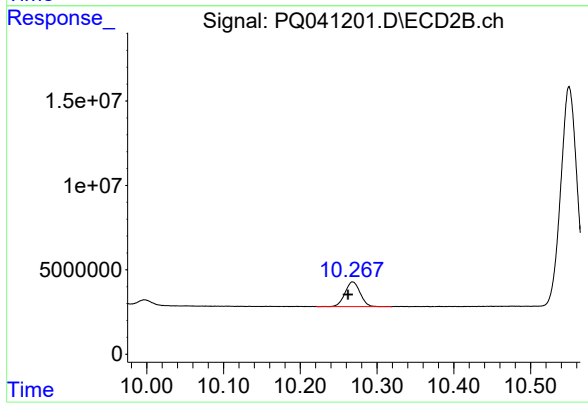
R.T.: 9.949 min
 Delta R.T.: 0.007 min
 Response: 74514529
 Conc: 270.52 ng/ml



#45 AR-1268-5

R.T.: 11.782 min
Delta R.T.: 0.015 min
Response: 50071116
Conc: 10.16 ng/ml

Instrument :
ECD_Q
ClientSampled :
AR1660CCC500



#45 AR-1268-5

R.T.: 10.268 min
Delta R.T.: 0.006 min
Response: 20013384
Conc: 11.30 ng/ml