

Data Path : Z:\pestpcbsrv\HPCHEM1\ECD_Q\Data\PQ071519\
 Data File : PQ041205.D
 Signal(s) : Signal #1: ECD1A.ch Signal #2: ECD2B.ch
 Acq On : 15 Jul 2019 13:18
 Operator : SM\AJ
 Sample : K3782-07
 Misc :
 ALS Vial : 6 Sample Multiplier: 1

Instrument :
 ECD_Q
 ClientSampleId :
 DUP-0539-190711

Integration File signal 1: autoint1.e
 Integration File signal 2: autoint2.e
 Quant Time: Jul 15 14:45:07 2019
 Quant Method : Z:\pestpcbsrv\HPCHEM1\ECD_Q\Method\PQ071219.M
 Quant Title : GC EXTRACTABLES
 QLast Update : Sat Jul 13 02:14:45 2019
 Response via : Initial Calibration
 Integrator: ChemStation

Volume Inj. : 2 µl
 Signal #1 Phase : ZB-MR1 Signal #2 Phase: ZB-MR2
 Signal #1 Info : 30Mx0.32mmx 0.50µ Signal #2 Info : 30M x 0.32mm x 0.25µm

Compound	RT#1	RT#2	Resp#1	Resp#2	ng/ml	ng/ml

System Monitoring Compounds						
1) SA Tetrachlo...	5.717	4.772	209.8E6	137.9E6	20.654	21.143
2) SA Decachlor...	12.134	10.545	214.6E6	79198353	16.707	16.941

Target Compounds

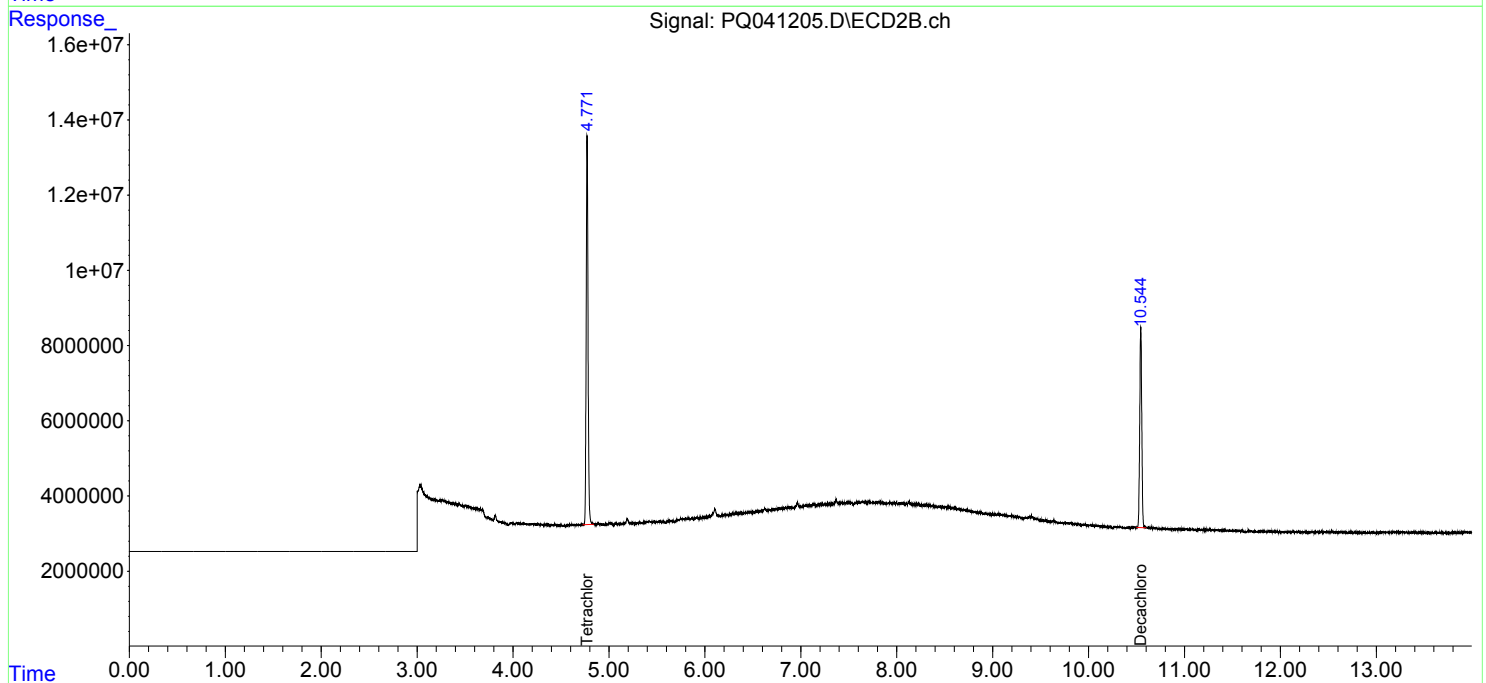
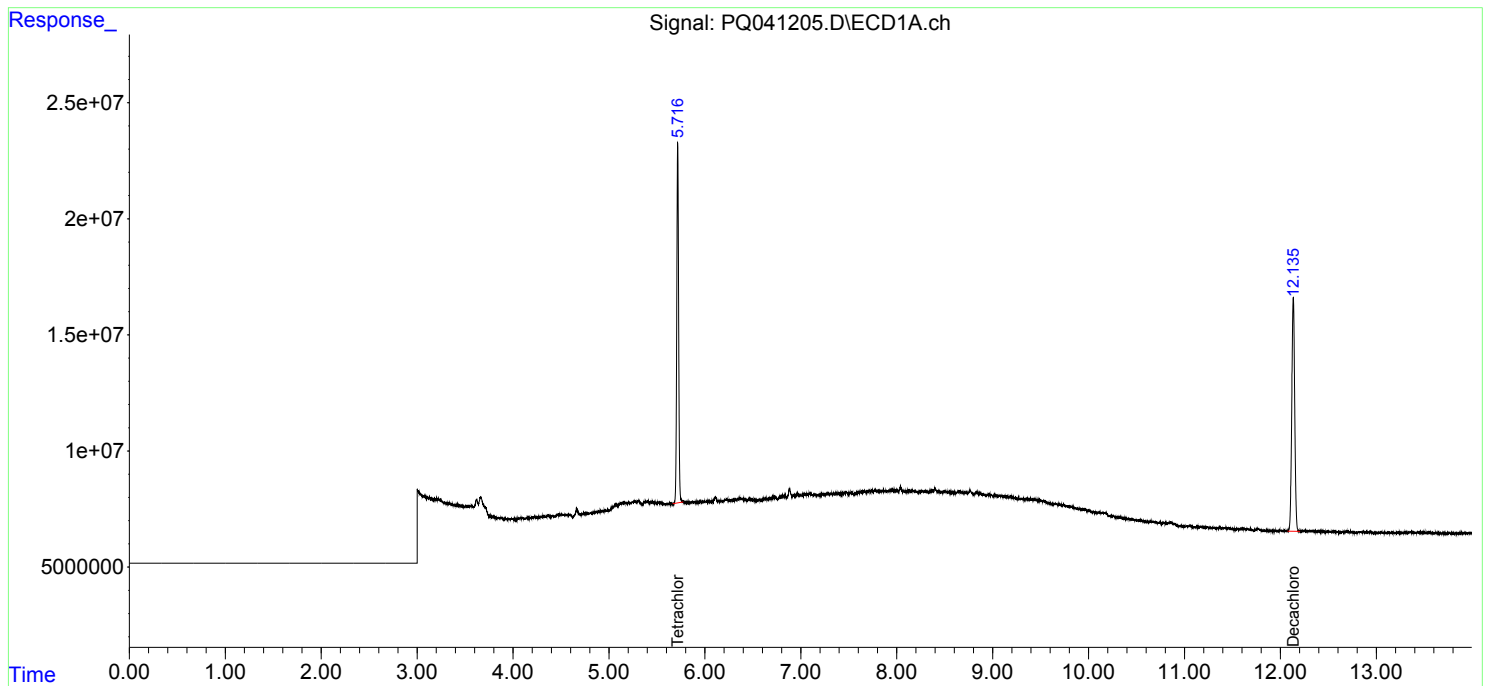
(f)=RT Delta > 1/2 Window (#)=Amounts differ by > 25% (m)=manual int.

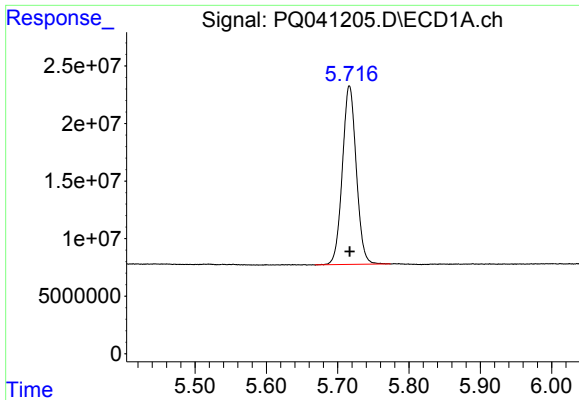
Data Path : Z:\pestpcbsrv\HPCHEM1\ECD_Q\Data\PQ071519\
 Data File : PQ041205.D
 Signal(s) : Signal #1: ECD1A.ch Signal #2: ECD2B.ch
 Acq On : 15 Jul 2019 13:18
 Operator : SM\AJ
 Sample : K3782-07
 Misc :
 ALS Vial : 6 Sample Multiplier: 1

Instrument :
 ECD_Q
 ClientSampleId :
 DUP-0539-190711

Integration File signal 1: autoint1.e
 Integration File signal 2: autoint2.e
 Quant Time: Jul 15 14:45:07 2019
 Quant Method : Z:\pestpcbsrv\HPCHEM1\ECD_Q\Method\PQ071219.M
 Quant Title : GC EXTRACTABLES
 QLast Update : Sat Jul 13 02:14:45 2019
 Response via : Initial Calibration
 Integrator: ChemStation

Volume Inj. : 2 µl
 Signal #1 Phase : ZB-MR1 Signal #2 Phase: ZB-MR2
 Signal #1 Info : 30Mx0.32mmx 0.50µm Signal #2 Info : 30M x 0.32mm x 0.25µm

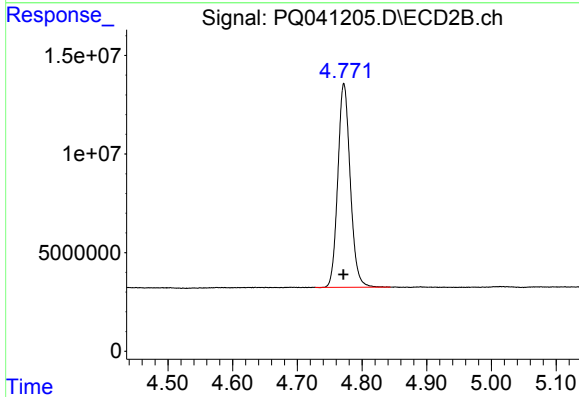




#1 Tetrachloro-m-xylene

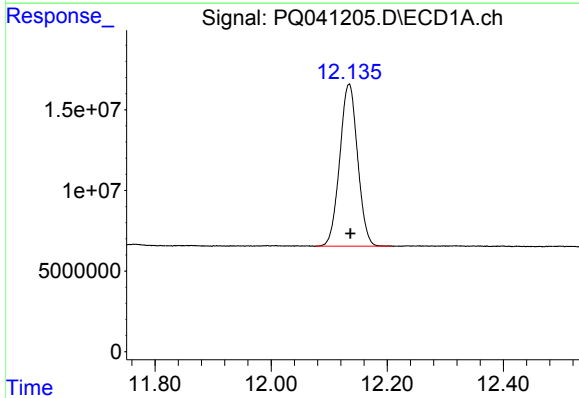
R.T.: 5.717 min
 Delta R.T.: 0.000 min
 Response: 209808554
 Conc: 20.65 ng/ml

Instrument :
 ECD_Q
 ClientSampleId :
 DUP-0539-190711



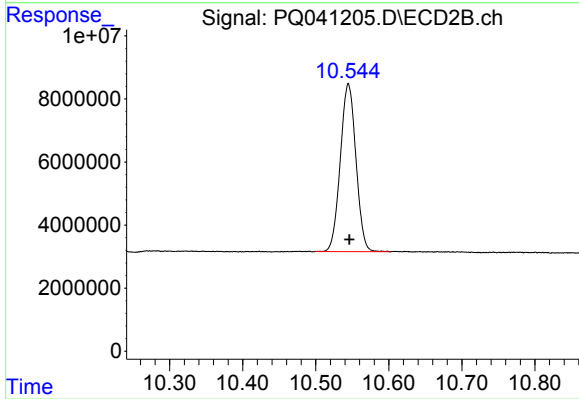
#1 Tetrachloro-m-xylene

R.T.: 4.772 min
 Delta R.T.: 0.000 min
 Response: 137871044
 Conc: 21.14 ng/ml



#2 Decachlorobiphenyl

R.T.: 12.134 min
 Delta R.T.: -0.002 min
 Response: 214552344
 Conc: 16.71 ng/ml



#2 Decachlorobiphenyl

R.T.: 10.545 min
 Delta R.T.: -0.001 min
 Response: 79198353
 Conc: 16.94 ng/ml