

Data Path : Z:\pestpcbsrv\HPCHEM1\ECD_Q\Data\PQ071620\
 Data File : PQ048748.D
 Signal(s) : Signal #1: ECD1A.ch Signal #2: ECD2B.ch
 Acq On : 16 Jul 2020 19:04
 Operator : DD\AJ
 Sample : I.BLK
 Misc :
 ALS Vial : 2 Sample Multiplier: 1

Instrument :
 ECD_Q
 ClientSampleId :

Integration File signal 1: autoint1.e
 Integration File signal 2: autoint2.e
 Quant Time: Jul 17 01:35:55 2020
 Quant Method : Z:\pestpcbsrv\HPCHEM1\ECD_Q\Method\PQ071620.M
 Quant Title : GC EXTRACTABLES
 QLast Update : Thu Jul 16 05:42:31 2020
 Response via : Initial Calibration
 Integrator: ChemStation

Volume Inj. : 2 µl
 Signal #1 Phase : ZB-MR2 Signal #2 Phase: ZB-MR2
 Signal #1 Info : 30Mx0.32mmx 0.50µ Signal #2 Info : 30M x 0.32mm x 0.25µm

Compound	RT#1	RT#2	Resp#1	Resp#2	ng/ml	ng/ml

System Monitoring Compounds						
1) SA Tetrachlo...	5.269	4.283	184.5E6	87581846	21.837	20.885
2) SA Decachlor...	11.519	9.647	221.2E6	111.7E6	21.484	20.732
Target Compounds						
9) L2 AR-1221-2	5.628	0.000	2983793	0	45.173	N.D. #
20) L4 AR-1242-5	7.578	0.000	2811178	0	14.359	N.D. #
24) L5 AR-1248-4	7.523f	0.000	4600457	0	15.750	N.D. #
25) L5 AR-1248-5	7.578	0.000	2811178	0	10.138	N.D. #
26) L6 AR-1254-1	7.523	0.000	4600457	0	15.056	N.D. #
43) L9 AR-1268-3	10.214	0.000	2659557	0	2.263	N.D. #
45) L9 AR-1268-5	11.147	0.000	2841296	0	0.733	N.D. #

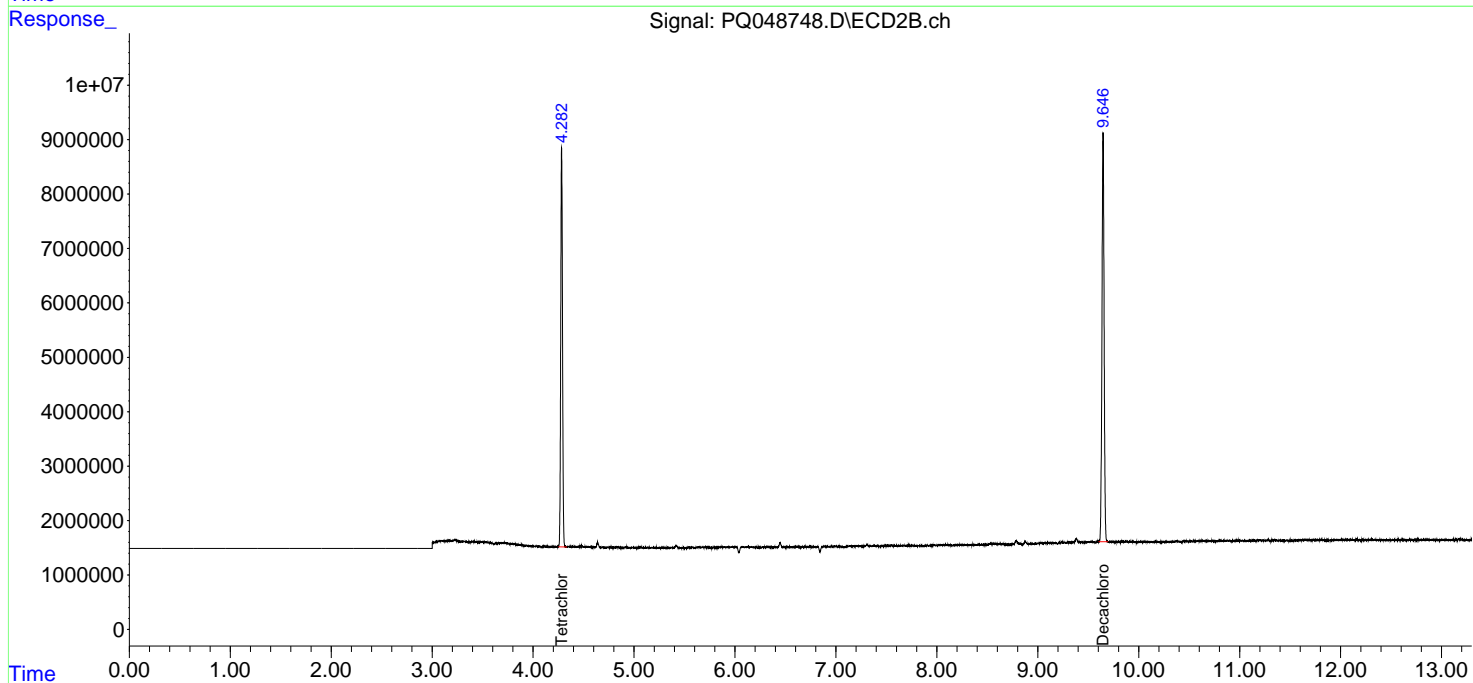
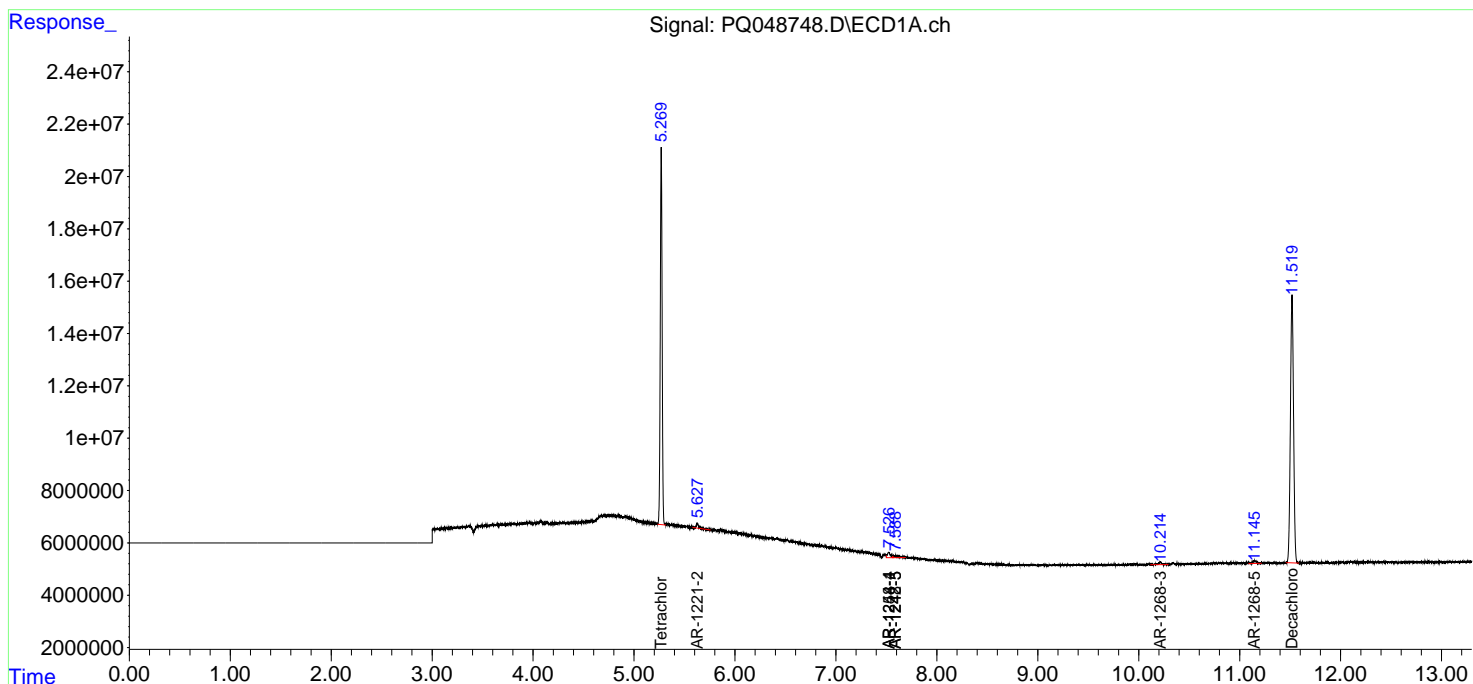
(f)=RT Delta > 1/2 Window (#)=Amounts differ by > 25% (m)=manual int.

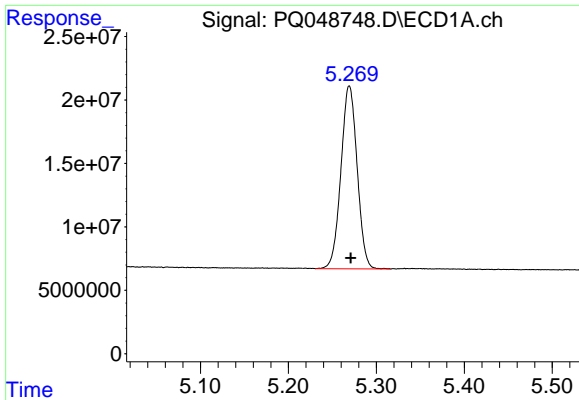
Data Path : Z:\pestpcbsrv\HPCHEM1\ECD_Q\Data\PQ071620\
 Data File : PQ048748.D
 Signal(s) : Signal #1: ECD1A.ch Signal #2: ECD2B.ch
 Acq On : 16 Jul 2020 19:04
 Operator : DD\AJ
 Sample : I.BLK
 Misc :
 ALS Vial : 2 Sample Multiplier: 1

Instrument :
 ECD_Q
 ClientSampled :

Integration File signal 1: autoint1.e
 Integration File signal 2: autoint2.e
 Quant Time: Jul 17 01:35:55 2020
 Quant Method : Z:\pestpcbsrv\HPCHEM1\ECD_Q\Method\PQ071620.M
 Quant Title : GC EXTRACTABLES
 QLast Update : Thu Jul 16 05:42:31 2020
 Response via : Initial Calibration
 Integrator: ChemStation

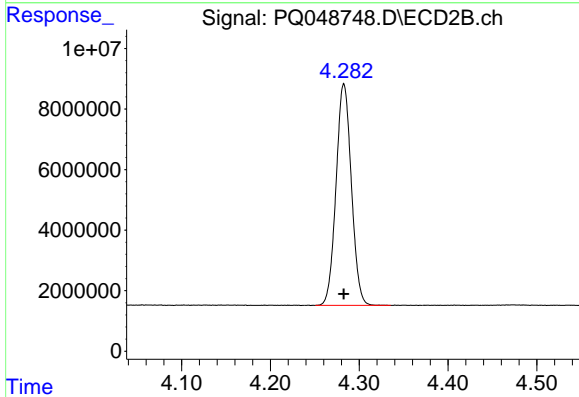
Volume Inj. : 2 µl
 Signal #1 Phase : ZB-MR1 Signal #2 Phase: ZB-MR2
 Signal #1 Info : 30Mx0.32mmx 0.50µ Signal #2 Info : 30M x 0.32mm x 0.25µm



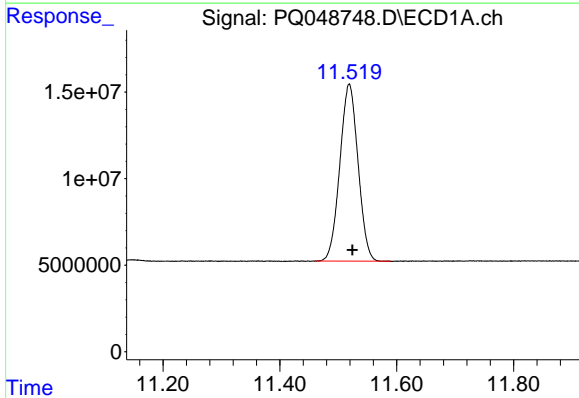


#1 Tetrachloro-m-xylene
 R.T.: 5.269 min
 Delta R.T.: -0.002 min
 Response: 184473603
 Conc: 21.84 ng/ml

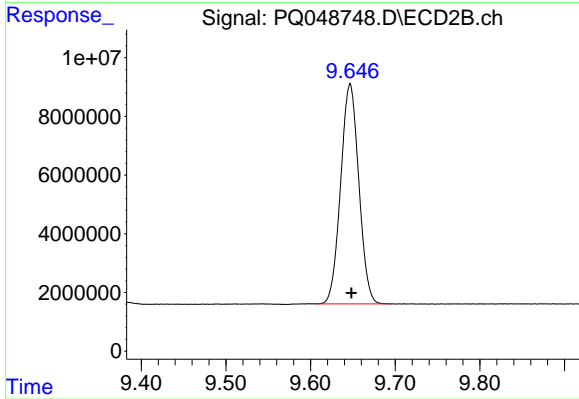
Instrument :
 ECD_Q
 ClientSampled :



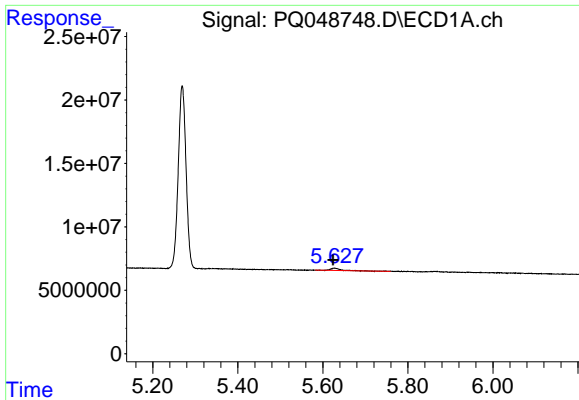
#1 Tetrachloro-m-xylene
 R.T.: 4.283 min
 Delta R.T.: 0.000 min
 Response: 87581846
 Conc: 20.88 ng/ml



#2 Decachlorobiphenyl
 R.T.: 11.519 min
 Delta R.T.: -0.005 min
 Response: 221235183
 Conc: 21.48 ng/ml

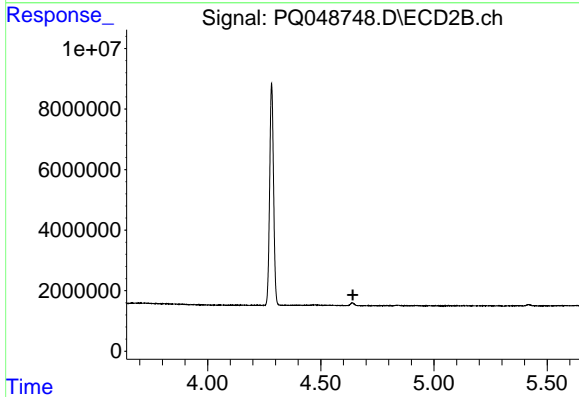


#2 Decachlorobiphenyl
 R.T.: 9.647 min
 Delta R.T.: -0.001 min
 Response: 111706074
 Conc: 20.73 ng/ml

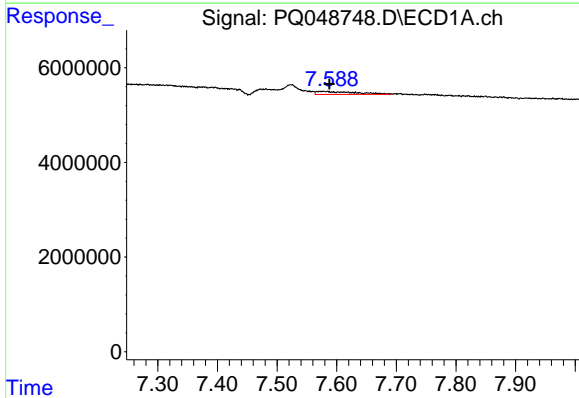


#9 AR-1221-2
 R.T.: 5.628 min
 Delta R.T.: 0.004 min
 Response: 2983793
 Conc: 45.17 ng/ml

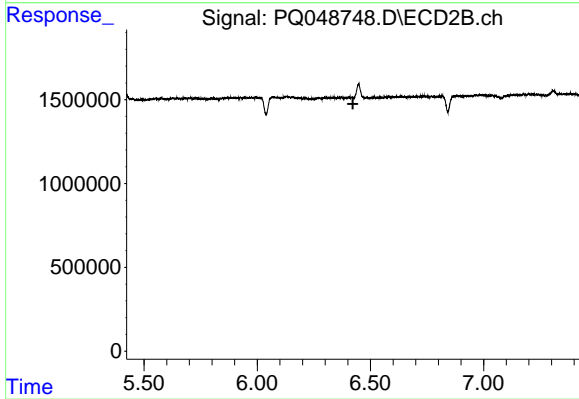
Instrument :
 ECD_Q
 ClientSampled :



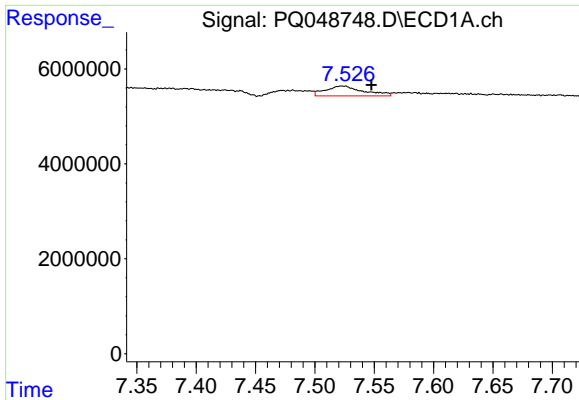
#9 AR-1221-2
 R.T.: 0.000 min
 Exp R.T. : 4.642 min
 Response: 0
 Conc: N.D.



#20 AR-1242-5
 R.T.: 7.578 min
 Delta R.T.: -0.010 min
 Response: 2811178
 Conc: 14.36 ng/ml



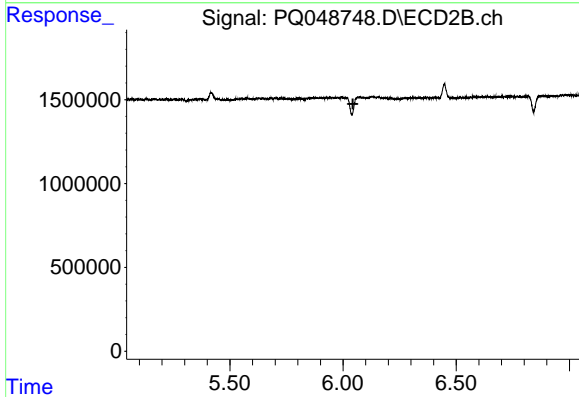
#20 AR-1242-5
 R.T.: 0.000 min
 Exp R.T. : 6.423 min
 Response: 0
 Conc: N.D.



#24 AR-1248-4

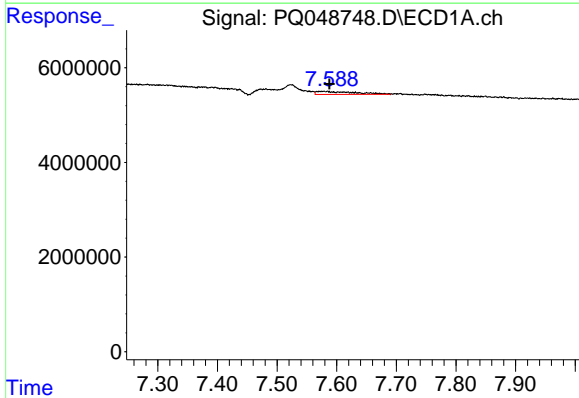
R.T.: 7.523 min
 Delta R.T.: -0.024 min
 Response: 4600457
 Conc: 15.75 ng/ml

Instrument :
 ECD_Q
 ClientSampleId :



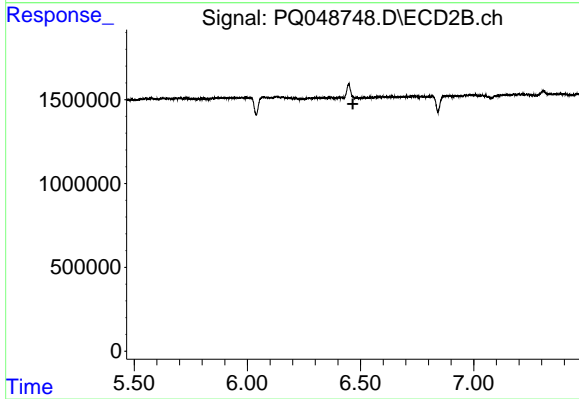
#24 AR-1248-4

R.T.: 0.000 min
 Exp R.T. : 6.044 min
 Response: 0
 Conc: N.D.



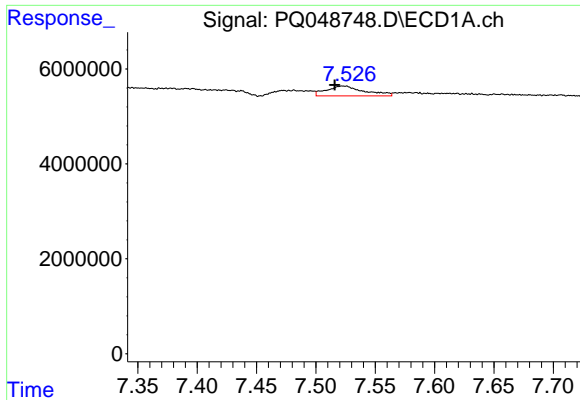
#25 AR-1248-5

R.T.: 7.578 min
 Delta R.T.: -0.010 min
 Response: 2811178
 Conc: 10.14 ng/ml



#25 AR-1248-5

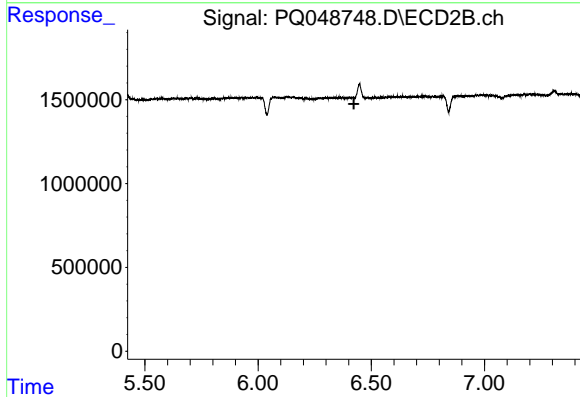
R.T.: 0.000 min
 Exp R.T. : 6.466 min
 Response: 0
 Conc: N.D.



#26 AR-1254-1

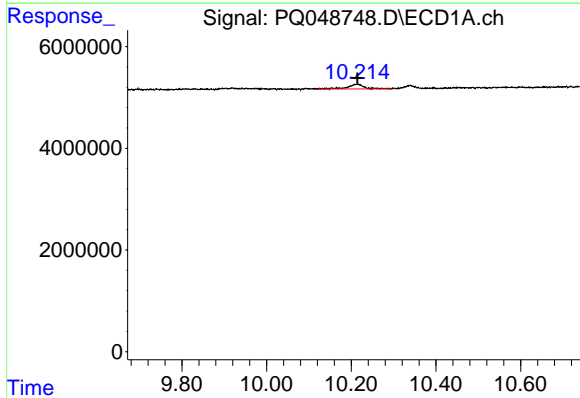
R.T.: 7.523 min
 Delta R.T.: 0.007 min
 Response: 4600457
 Conc: 15.06 ng/ml

Instrument :
 ECD_Q
 ClientSampleId :



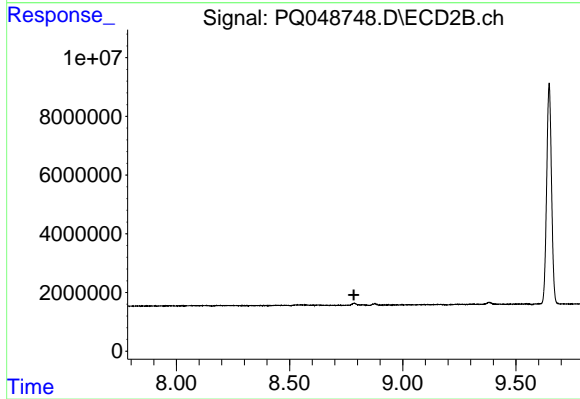
#26 AR-1254-1

R.T.: 0.000 min
 Exp R.T. : 6.423 min
 Response: 0
 Conc: N.D.



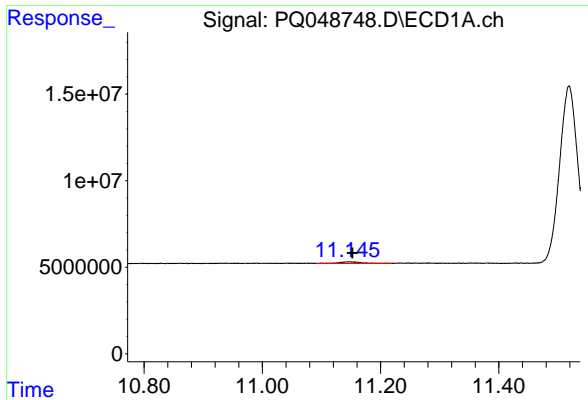
#43 AR-1268-3

R.T.: 10.214 min
 Delta R.T.: 0.000 min
 Response: 2659557
 Conc: 2.26 ng/ml



#43 AR-1268-3

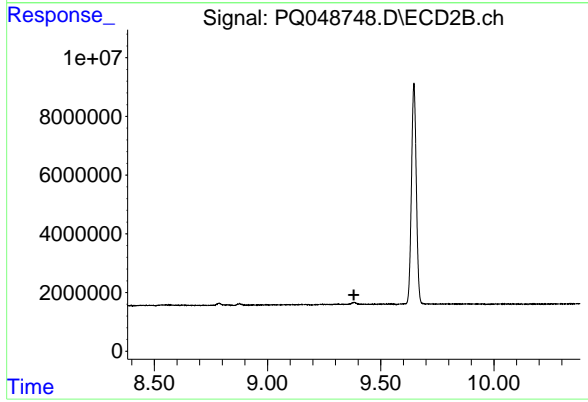
R.T.: 0.000 min
 Exp R.T. : 8.784 min
 Response: 0
 Conc: N.D.



#45 AR-1268-5

R.T.: 11.147 min
Delta R.T.: -0.005 min
Response: 2841296
Conc: 0.73 ng/ml

Instrument :
ECD_Q
ClientSampleId :



#45 AR-1268-5

R.T.: 0.000 min
Exp R.T. : 9.382 min
Response: 0
Conc: N.D.