

Data Path : Z:\pestpcbsrv\HPCHEM1\ECD_Q\Data\PQ071720\
 Data File : PQ048778.D
 Signal(s) : Signal #1: ECD1A.ch Signal #2: ECD2B.ch
 Acq On : 17 Jul 2020 14:47
 Operator : DD\AJ
 Sample : L3216-07
 Misc : AR1248 LOD 40 PPB
 ALS Vial : 17 Sample Multiplier: 1

Instrument :
 ECD_Q
ClientSampleId :
 LOD-MDL-WATER-01-QT3-2020

Integration File signal 1: autoint1.e
 Integration File signal 2: autoint2.e
 Quant Time: Jul 18 06:49:55 2020
 Quant Method : Z:\pestpcbsrv\HPCHEM1\ECD_Q\Method\PQ071620.M
 Quant Title : GC EXTRACTABLES
 QLast Update : Thu Jul 16 05:42:31 2020
 Response via : Initial Calibration
 Integrator: ChemStation

Volume Inj. : 2 µl
 Signal #1 Phase : ZB-MR1 Signal #2 Phase: ZB-MR2
 Signal #1 Info : 30Mx0.32mmx 0.50µ Signal #2 Info : 30M x 0.32mm x 0.25µm

Compound	RT#1	RT#2	Resp#1	Resp#2	ng/ml	ng/ml

System Monitoring Compounds						
1) SA Tetrachlo...	5.269	4.282	180.1E6	87066160	21.319	20.762
2) SA Decachlor...	11.523	9.649	236.7E6	120.6E6	22.982	22.375
Target Compounds						
21) L5 AR-1248-1	6.601	5.546	6105596	3098172	37.243	34.875
22) L5 AR-1248-2	6.895	5.811	8518710	4243270	39.156	36.701
23) L5 AR-1248-3	7.116	5.856	8856357	4234222	36.036	35.767
24) L5 AR-1248-4	7.546	6.046	10346799	2316026	35.422	15.972 #
25) L5 AR-1248-5	7.586	6.464	9726406	7821894	35.076	51.587 #

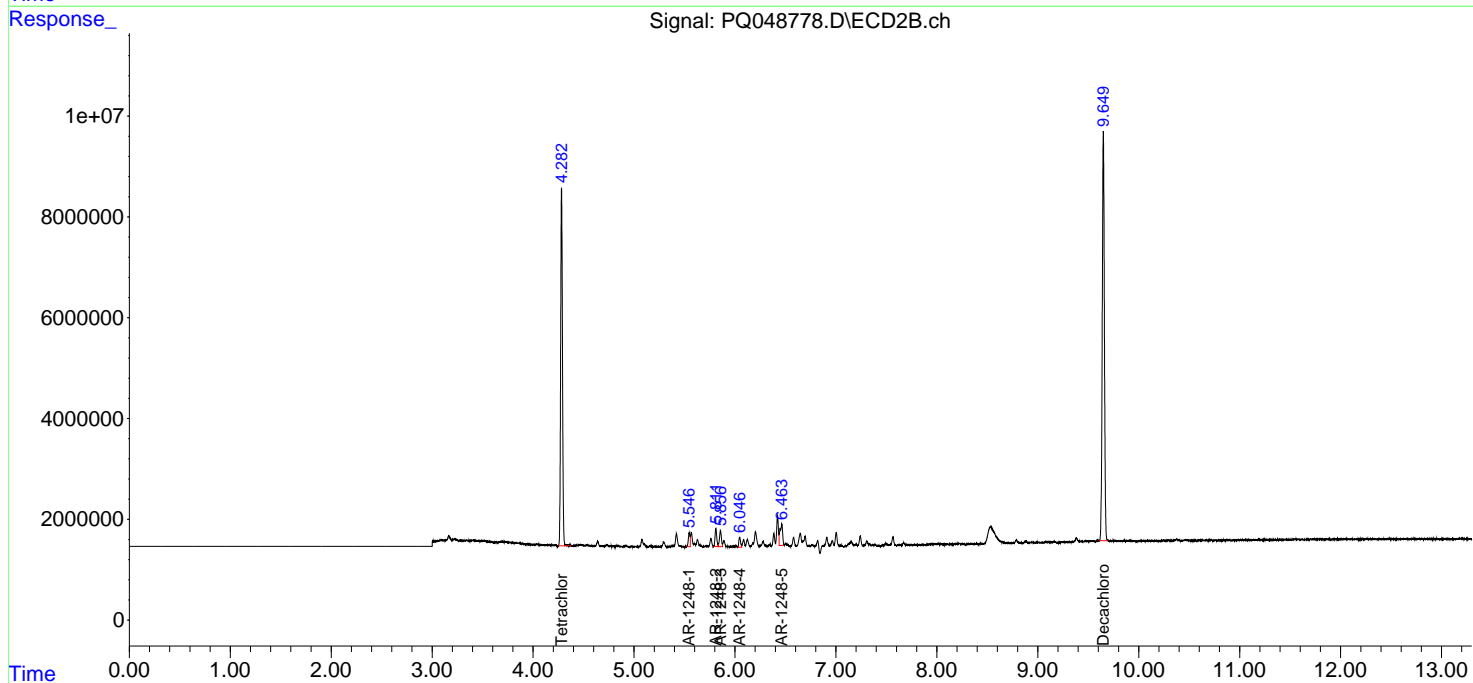
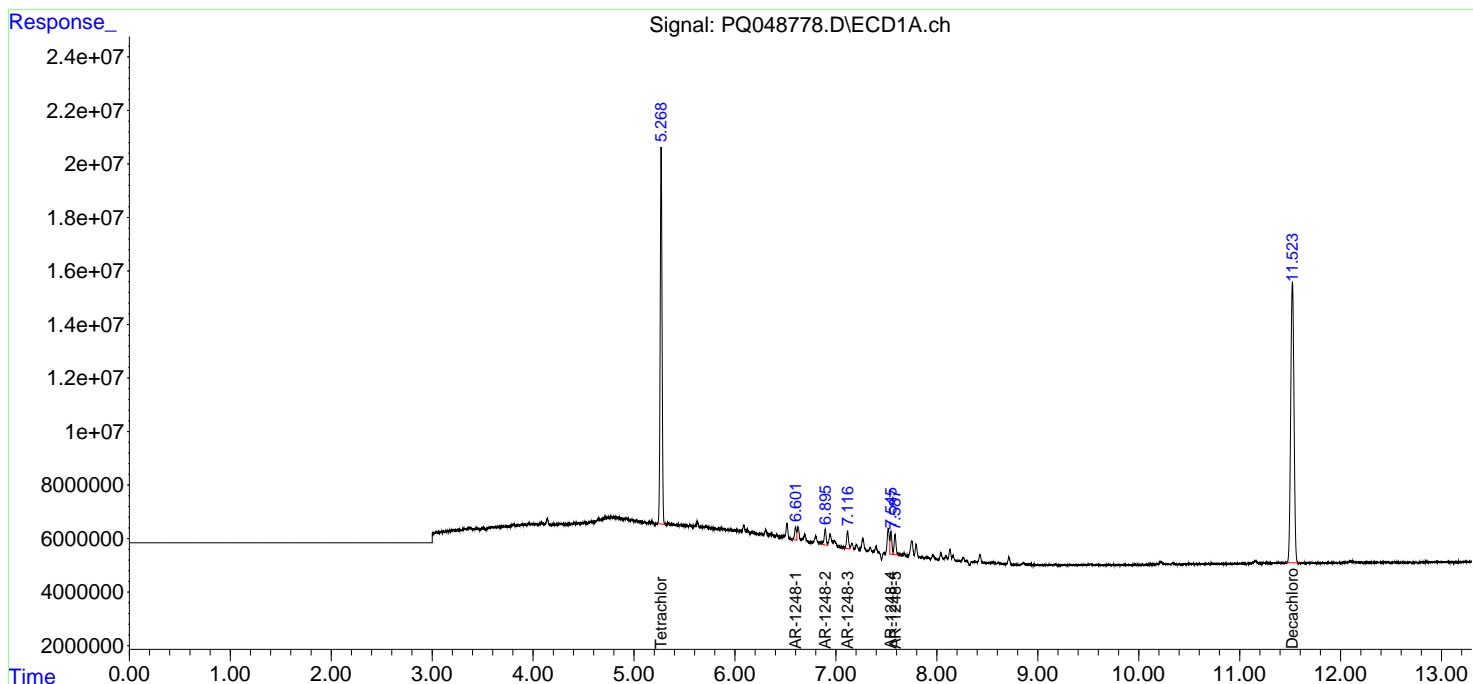
(f)=RT Delta > 1/2 Window (#)=Amounts differ by > 25% (m)=manual int.

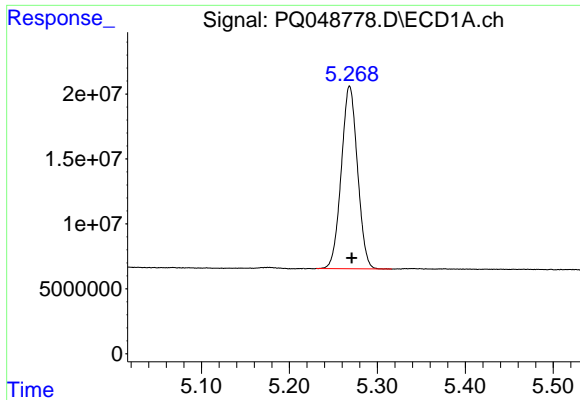
Data Path : Z:\pestpcbsrv\HPCHEM1\ECD_Q\Data\PQ071720\
 Data File : PQ048778.D
 Signal(s) : Signal #1: ECD1A.ch Signal #2: ECD2B.ch
 Acq On : 17 Jul 2020 14:47
 Operator : DD\AJ
 Sample : L3216-07
 Misc : AR1248 LOD 40 PPB
 ALS Vial : 17 Sample Multiplier: 1

Instrument :
 ECD_Q
Client Sampled :
 LOD-MDL-WATER-01-QT3-2020

Integration File signal 1: autoint1.e
 Integration File signal 2: autoint2.e
 Quant Time: Jul 18 06:49:55 2020
 Quant Method : Z:\pestpcbsrv\HPCHEM1\ECD_Q\Method\PQ071620.M
 Quant Title : GC EXTRACTABLES
 QLast Update : Thu Jul 16 05:42:31 2020
 Response via : Initial Calibration
 Integrator: ChemStation

Volume Inj. : 2 µl
 Signal #1 Phase : ZB-MR1 Signal #2 Phase: ZB-MR2
 Signal #1 Info : 30Mx0.32mmx 0.50µm Signal #2 Info : 30M x 0.32mm x 0.25µm

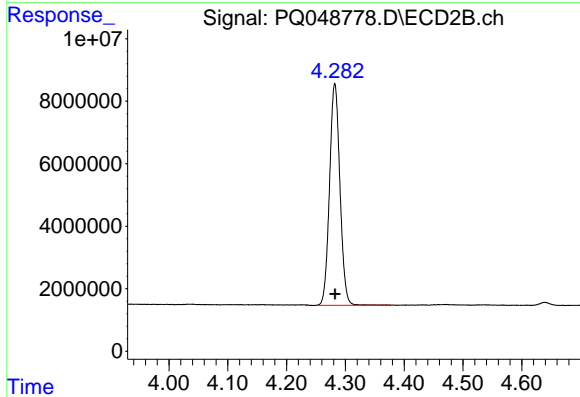




#1 Tetrachloro-m-xylene

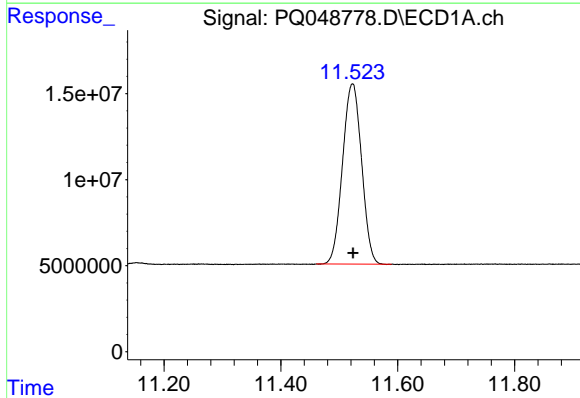
R.T.: 5.269 min
 Delta R.T.: -0.002 min
 Response: 180101698
 Conc: 21.32 ng/ml

Instrument :
 ECD_Q
 ClientSampleId :
 LOD-MDL-WATER-01-QT3-2020



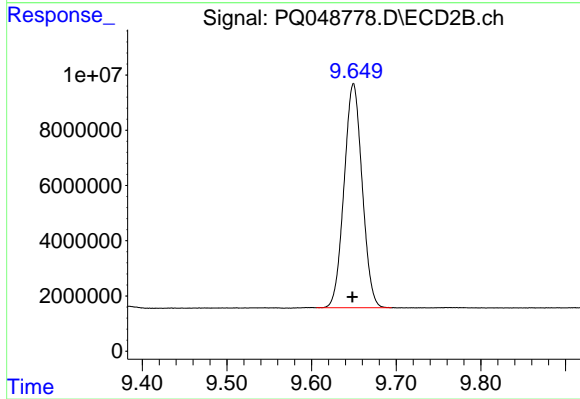
#1 Tetrachloro-m-xylene

R.T.: 4.282 min
 Delta R.T.: 0.000 min
 Response: 87066160
 Conc: 20.76 ng/ml



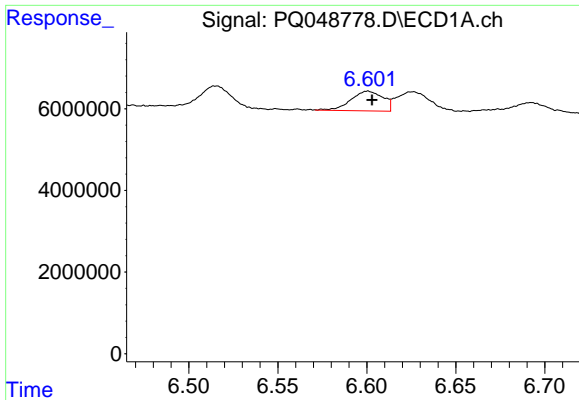
#2 Decachlorobiphenyl

R.T.: 11.523 min
 Delta R.T.: -0.001 min
 Response: 236663796
 Conc: 22.98 ng/ml



#2 Decachlorobiphenyl

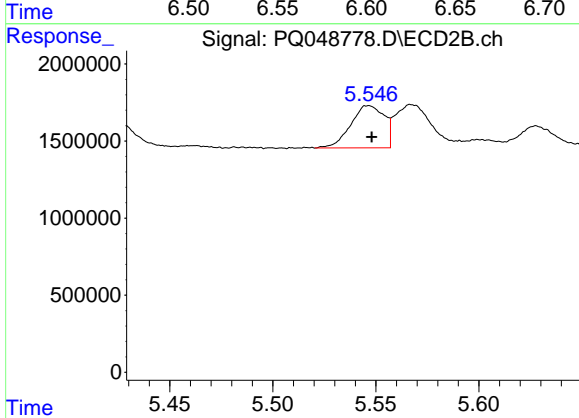
R.T.: 9.649 min
 Delta R.T.: 0.001 min
 Response: 120563552
 Conc: 22.38 ng/ml



#21 AR-1248-1

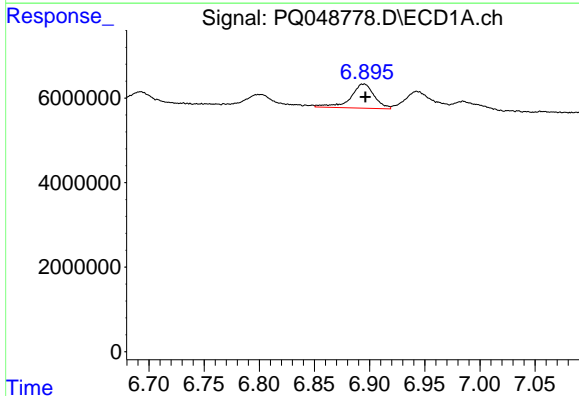
R.T.: 6.601 min
 Delta R.T.: -0.002 min
 Response: 6105596
 Conc: 37.24 ng/ml

Instrument :
 ECD_Q
ClientSampleId :
 LOD-MDL-WATER-01-QT3-2020



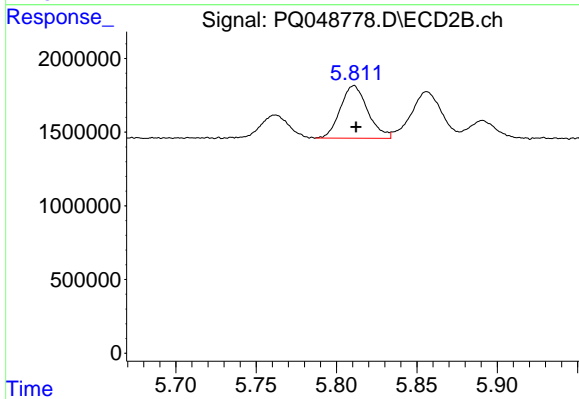
#21 AR-1248-1

R.T.: 5.546 min
 Delta R.T.: -0.001 min
 Response: 3098172
 Conc: 34.88 ng/ml



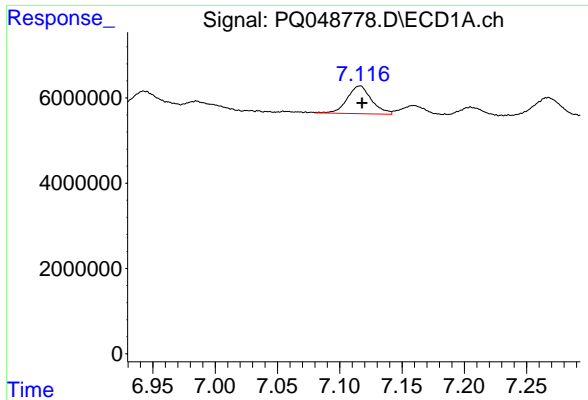
#22 AR-1248-2

R.T.: 6.895 min
 Delta R.T.: -0.002 min
 Response: 8518710
 Conc: 39.16 ng/ml



#22 AR-1248-2

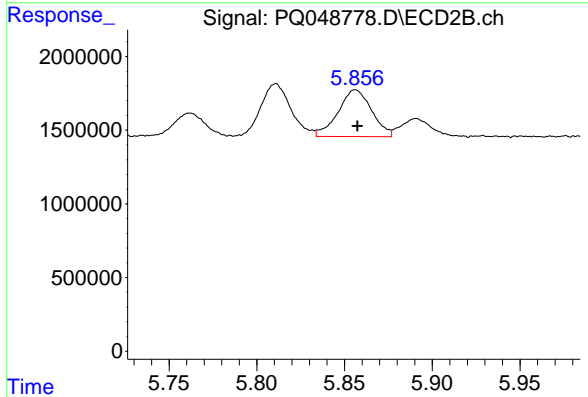
R.T.: 5.811 min
 Delta R.T.: -0.001 min
 Response: 4243270
 Conc: 36.70 ng/ml



#23 AR-1248-3

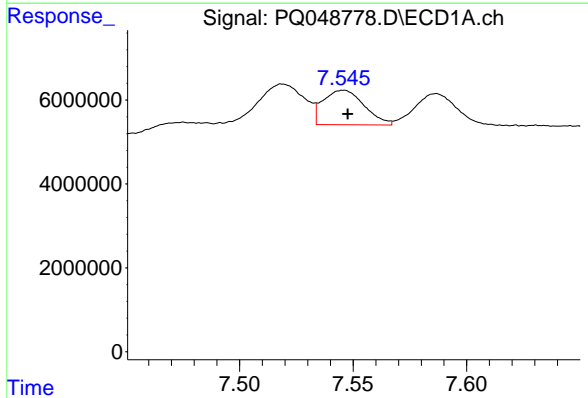
R.T.: 7.116 min
 Delta R.T.: -0.002 min
 Response: 8856357
 Conc: 36.04 ng/ml

Instrument :
 ECD_Q
ClientSampleId :
 LOD-MDL-WATER-01-QT3-2020



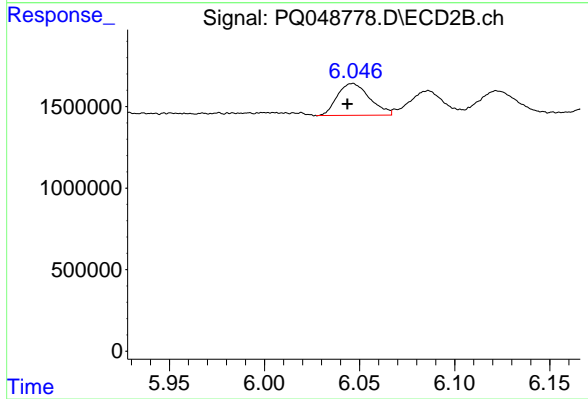
#23 AR-1248-3

R.T.: 5.856 min
 Delta R.T.: -0.001 min
 Response: 4234222
 Conc: 35.77 ng/ml



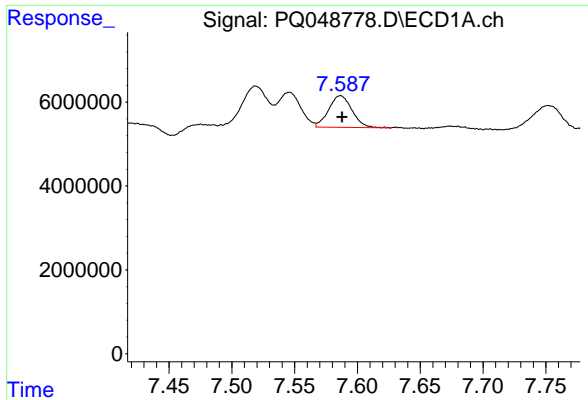
#24 AR-1248-4

R.T.: 7.546 min
 Delta R.T.: -0.002 min
 Response: 10346799
 Conc: 35.42 ng/ml



#24 AR-1248-4

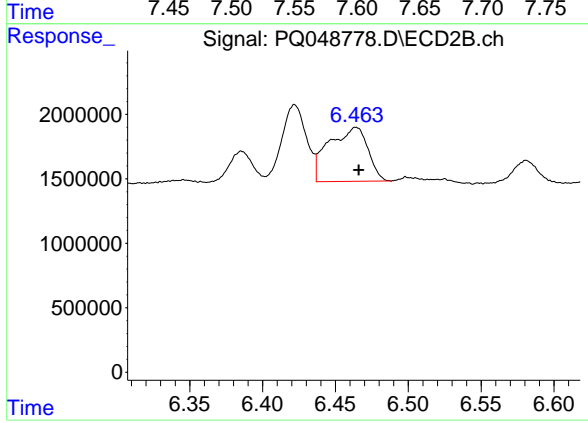
R.T.: 6.046 min
 Delta R.T.: 0.003 min
 Response: 2316026
 Conc: 15.97 ng/ml



#25 AR-1248-5

R.T.: 7.586 min
Delta R.T.: -0.001 min
Response: 9726406
Conc: 35.08 ng/ml

Instrument :
ECD_Q
ClientSampleId :
LOD-MDL-WATER-01-QT3-2020



#25 AR-1248-5

R.T.: 6.464 min
Delta R.T.: -0.002 min
Response: 7821894
Conc: 51.59 ng/ml