

Data Path : Z:\pestpcbsrv\HPCHEM1\ECD\_Q\Data\PQ071723\  
 Data File : PQ062301.D  
 Signal(s) : Signal #1: ECD1A.ch Signal #2: ECD2B.ch  
 Acq On : 17 Jul 2023 20:51  
 Operator : YP\AJ  
 Sample : AR1660CCC500  
 Misc :  
 ALS Vial : 3 Sample Multiplier: 1

Instrument :  
 ECD\_Q  
 ClientSampleId :  
 AR1660CCC500

Integration File signal 1: autoint1.e  
 Integration File signal 2: autoint2.e  
 Quant Time: Jul 18 02:31:21 2023  
 Quant Method : Z:\pestpcbsrv\HPCHEM1\ECD\_Q\Method\PQ070123.M  
 Quant Title : GC EXTRACTABLES  
 QLast Update : Tue Jul 04 05:32:27 2023  
 Response via : Initial Calibration  
 Integrator: ChemStation

Volume Inj. : 2 µl  
 Signal #1 Phase : ZB-MR1 Signal #2 Phase: ZB-MR2  
 Signal #1 Info : 30Mx0.32mmx 0.50µ Signal #2 Info : 30M x 0.32mm x 0.25µm

Compound	RT#1	RT#2	Resp#1	Resp#2	ng/ml	ng/ml
-----						
System Monitoring Compounds						
1) SA Tetrachlo...	3.405	2.759	250.2E6	144.7E6	51.290	57.651
2) SA Decachlor...	8.584	7.527	171.2E6	177.7E6	47.140	53.342
Target Compounds						
3) L1 AR-1016-1	4.505	3.760	83272520	53394600	505.546	539.473
4) L1 AR-1016-2	4.524	3.775	123.6E6	78798645	499.724	546.458
5) L1 AR-1016-3	4.582	3.935	75895778	42167339	497.985	558.932
6) L1 AR-1016-4	4.673	3.984	62595937	36946261	499.388	562.527
7) L1 AR-1016-5	4.960	4.178	61782756	45056980	507.594	549.599
31) L7 AR-1260-1	6.063	5.171	119.2E6	91301703	505.190	548.183
32) L7 AR-1260-2	6.323	5.361	150.9E6	111.7E6	522.396	537.398
33) L7 AR-1260-3	6.676	5.502	88101391	104.2E6	498.942	535.792
34) L7 AR-1260-4	6.893	5.964	108.8E6	79437347	516.552	544.608
35) L7 AR-1260-5	7.205	6.211	206.2E6	179.2E6	502.085	539.584

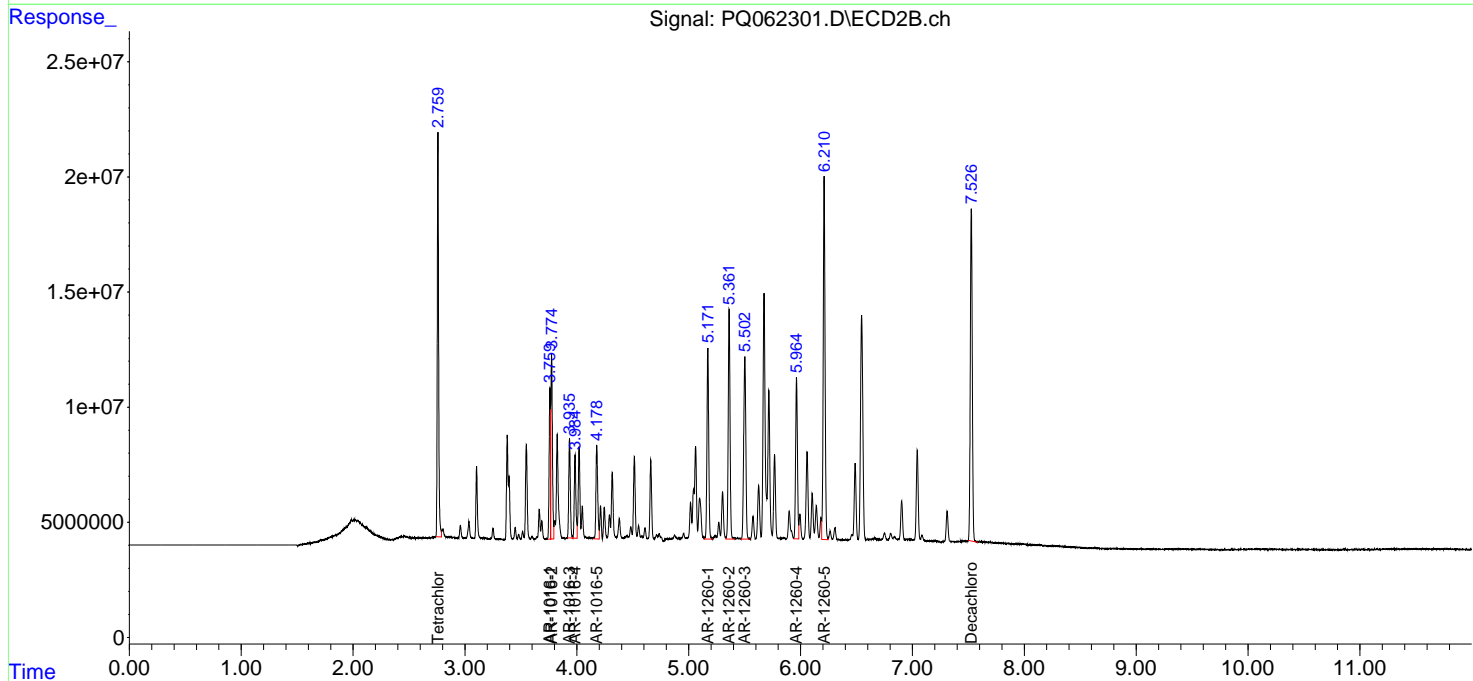
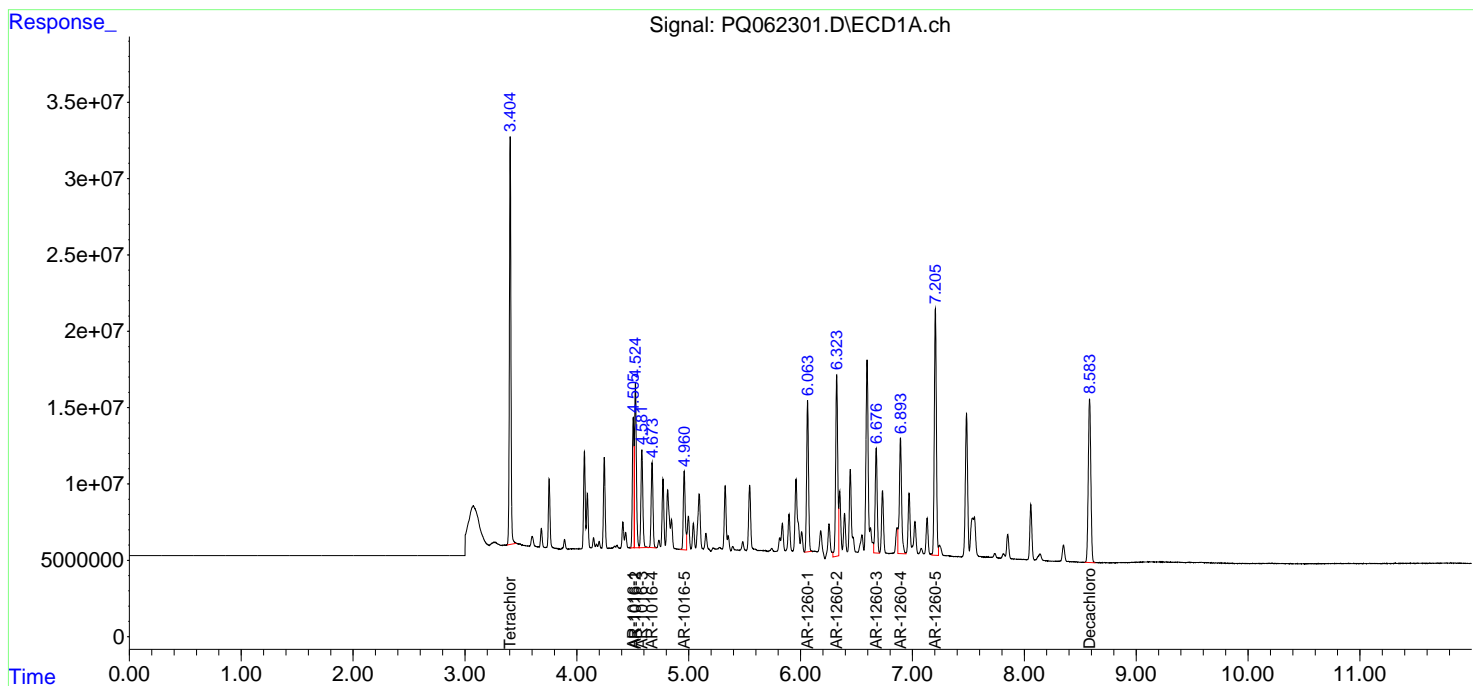
(f)=RT Delta > 1/2 Window (#)=Amounts differ by > 25% (m)=manual int.

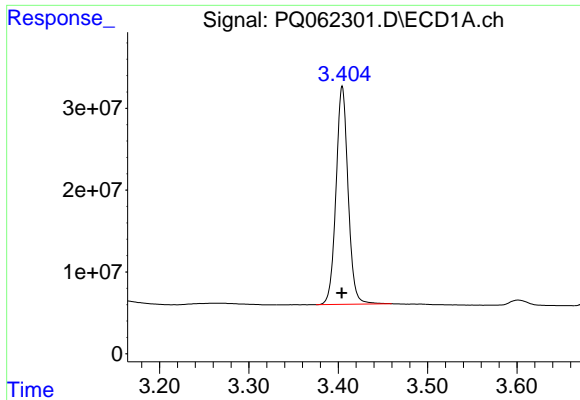
Data Path : Z:\pestpcbsrv\HPCHEM1\ECD\_Q\Data\PQ071723\  
 Data File : PQ062301.D  
 Signal(s) : Signal #1: ECD1A.ch Signal #2: ECD2B.ch  
 Acq On : 17 Jul 2023 20:51  
 Operator : YP\AJ  
 Sample : AR1660CCC500  
 Misc :  
 ALS Vial : 3 Sample Multiplier: 1

Instrument :  
 ECD\_Q  
 ClientSampleId :  
 AR1660CCC500

Integration File signal 1: autoint1.e  
 Integration File signal 2: autoint2.e  
 Quant Time: Jul 18 02:31:21 2023  
 Quant Method : Z:\pestpcbsrv\HPCHEM1\ECD\_Q\Method\PQ070123.M  
 Quant Title : GC EXTRACTABLES  
 QLast Update : Tue Jul 04 05:32:27 2023  
 Response via : Initial Calibration  
 Integrator: ChemStation

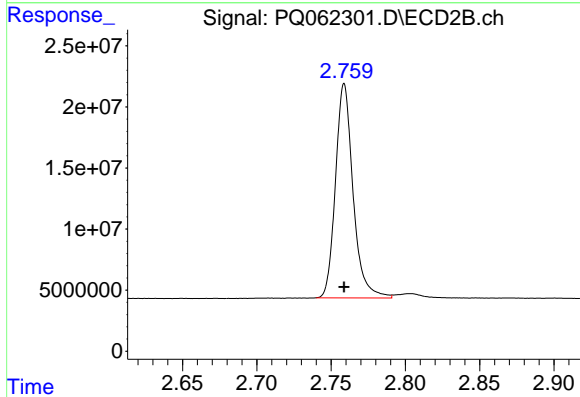
Volume Inj. : 2 µl  
 Signal #1 Phase : ZB-MR1 Signal #2 Phase: ZB-MR2  
 Signal #1 Info : 30Mx0.32mmx 0.50µ Signal #2 Info : 30M x 0.32mm x 0.25µm



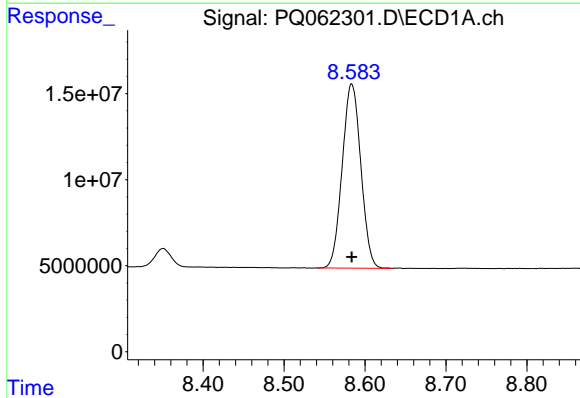


#1 Tetrachloro-m-xylene  
 R.T.: 3.405 min  
 Delta R.T.: 0.000 min  
 Response: 250200453  
 Conc: 51.29 ng/ml

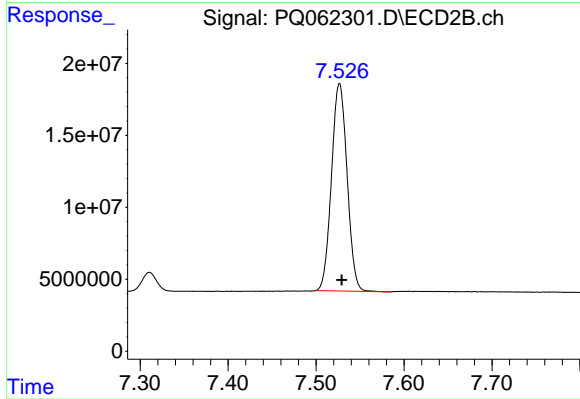
Instrument :  
 ECD\_Q  
 ClientSampleId :  
 AR1660CCC500



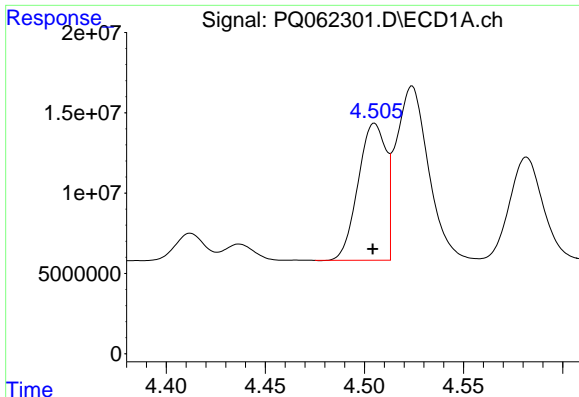
#1 Tetrachloro-m-xylene  
 R.T.: 2.759 min  
 Delta R.T.: 0.000 min  
 Response: 144651452  
 Conc: 57.65 ng/ml



#2 Decachlorobiphenyl  
 R.T.: 8.584 min  
 Delta R.T.: 0.000 min  
 Response: 171248068  
 Conc: 47.14 ng/ml



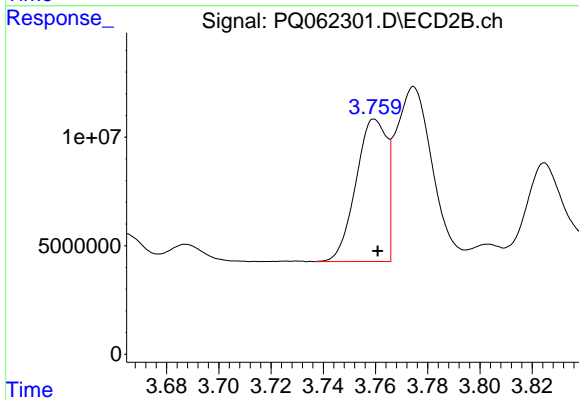
#2 Decachlorobiphenyl  
 R.T.: 7.527 min  
 Delta R.T.: -0.003 min  
 Response: 177744282  
 Conc: 53.34 ng/ml



#3 AR-1016-1

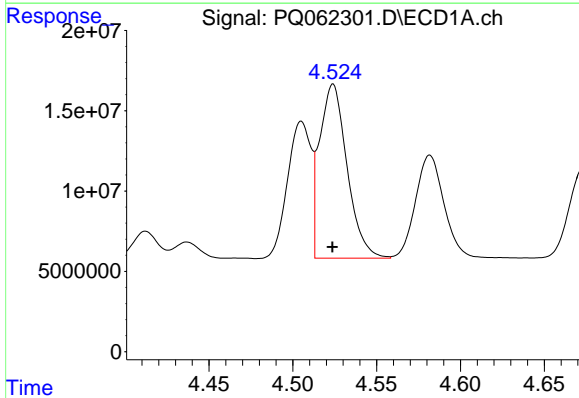
R.T.: 4.505 min  
 Delta R.T.: 0.000 min  
 Response: 83272520  
 Conc: 505.55 ng/ml

Instrument :  
 ECD\_Q  
 ClientSampleId :  
 AR1660CCC500



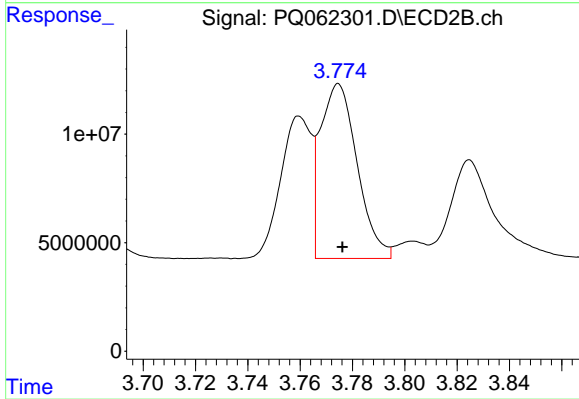
#3 AR-1016-1

R.T.: 3.760 min  
 Delta R.T.: -0.001 min  
 Response: 53394600  
 Conc: 539.47 ng/ml



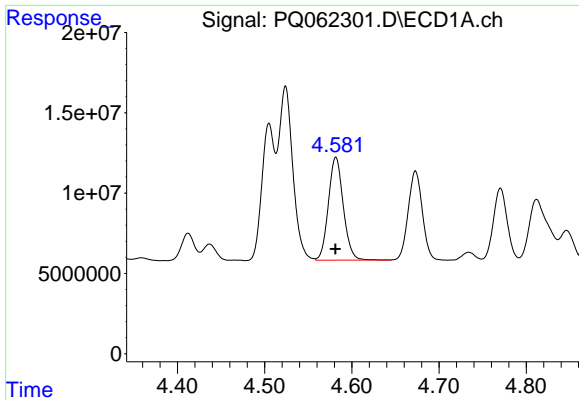
#4 AR-1016-2

R.T.: 4.524 min  
 Delta R.T.: 0.000 min  
 Response: 123565824  
 Conc: 499.72 ng/ml



#4 AR-1016-2

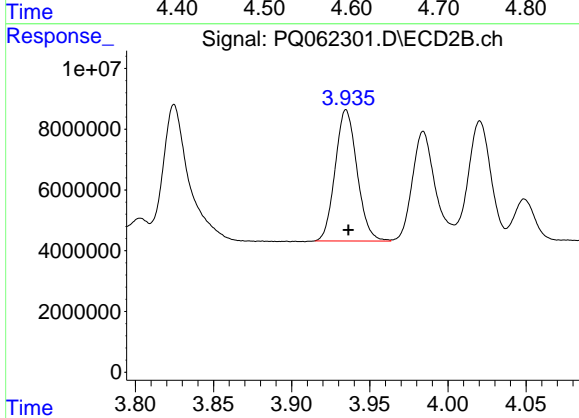
R.T.: 3.775 min  
 Delta R.T.: -0.002 min  
 Response: 78798645  
 Conc: 546.46 ng/ml



#5 AR-1016-3

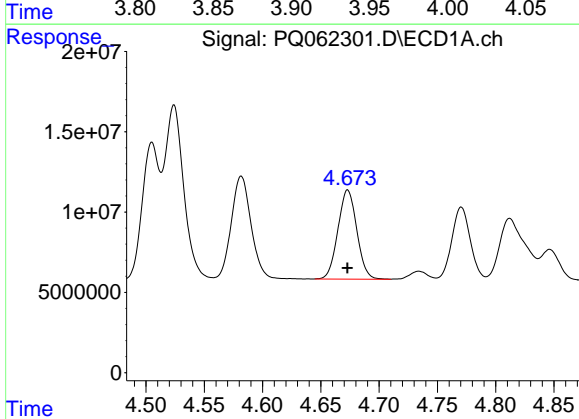
R.T.: 4.582 min  
 Delta R.T.: 0.000 min  
 Response: 75895778  
 Conc: 497.99 ng/ml

Instrument :  
 ECD\_Q  
 ClientSampleId :  
 AR1660CCC500



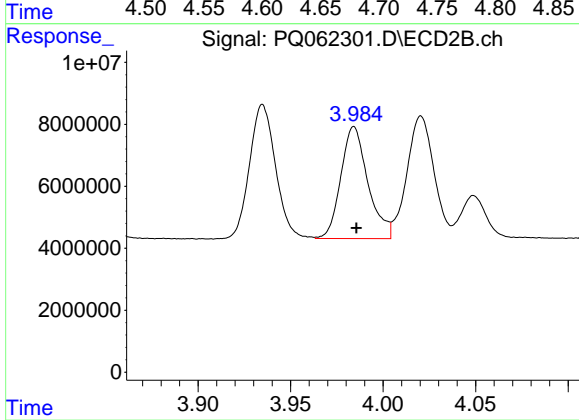
#5 AR-1016-3

R.T.: 3.935 min  
 Delta R.T.: -0.002 min  
 Response: 42167339  
 Conc: 558.93 ng/ml



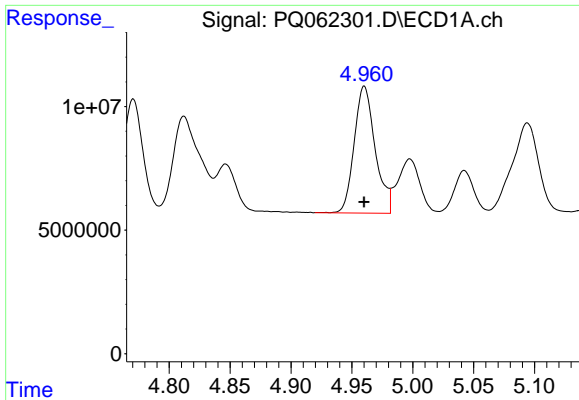
#6 AR-1016-4

R.T.: 4.673 min  
 Delta R.T.: 0.000 min  
 Response: 62595937  
 Conc: 499.39 ng/ml



#6 AR-1016-4

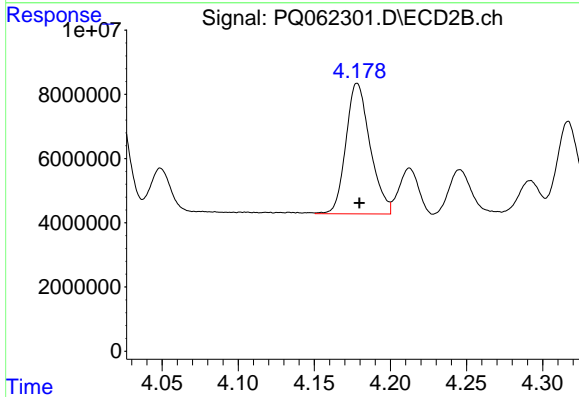
R.T.: 3.984 min  
 Delta R.T.: -0.001 min  
 Response: 36946261  
 Conc: 562.53 ng/ml



#7 AR-1016-5

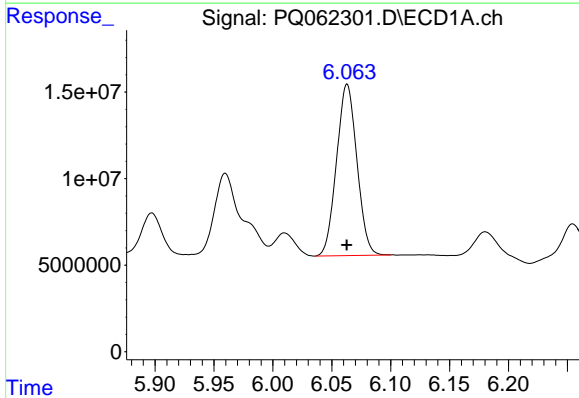
R.T.: 4.960 min  
 Delta R.T.: 0.000 min  
 Response: 61782756  
 Conc: 507.59 ng/ml

Instrument :  
 ECD\_Q  
 ClientSampleId :  
 AR1660CCC500



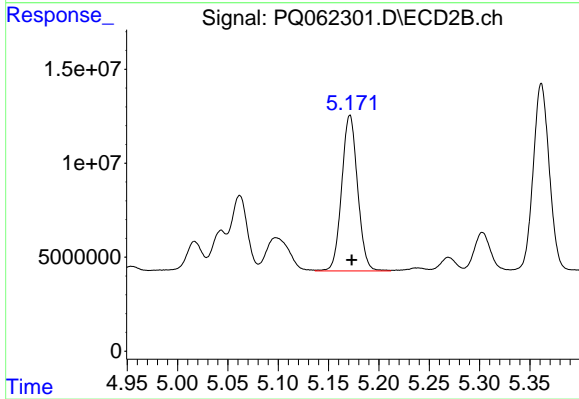
#7 AR-1016-5

R.T.: 4.178 min  
 Delta R.T.: -0.001 min  
 Response: 45056980  
 Conc: 549.60 ng/ml



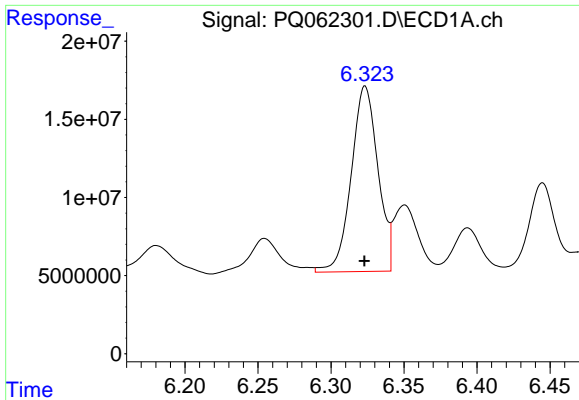
#31 AR-1260-1

R.T.: 6.063 min  
 Delta R.T.: 0.000 min  
 Response: 119190337  
 Conc: 505.19 ng/ml



#31 AR-1260-1

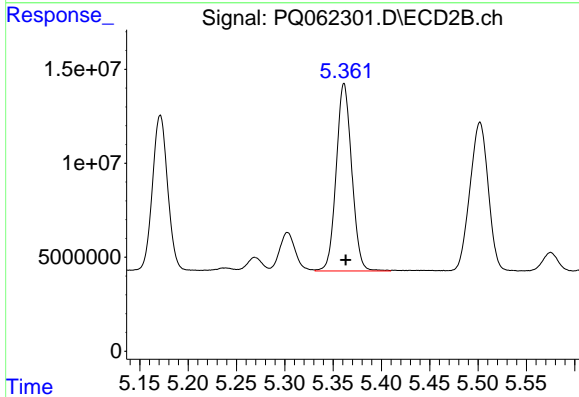
R.T.: 5.171 min  
 Delta R.T.: -0.002 min  
 Response: 91301703  
 Conc: 548.18 ng/ml



#32 AR-1260-2

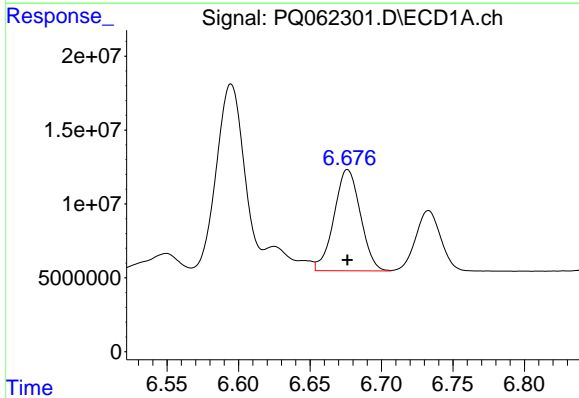
R.T.: 6.323 min  
 Delta R.T.: 0.000 min  
 Response: 150874442  
 Conc: 522.40 ng/ml

Instrument :  
 ECD\_Q  
 ClientSampleId :  
 AR1660CCC500



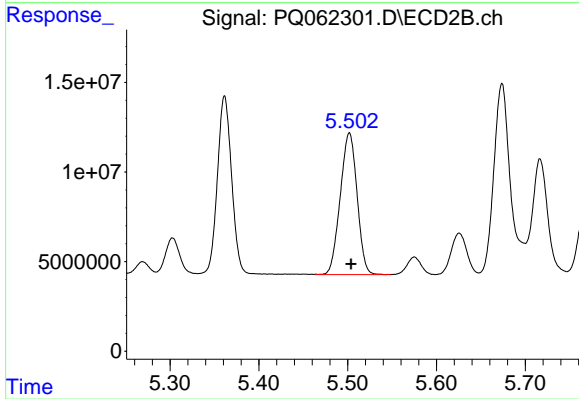
#32 AR-1260-2

R.T.: 5.361 min  
 Delta R.T.: -0.002 min  
 Response: 111749770  
 Conc: 537.40 ng/ml



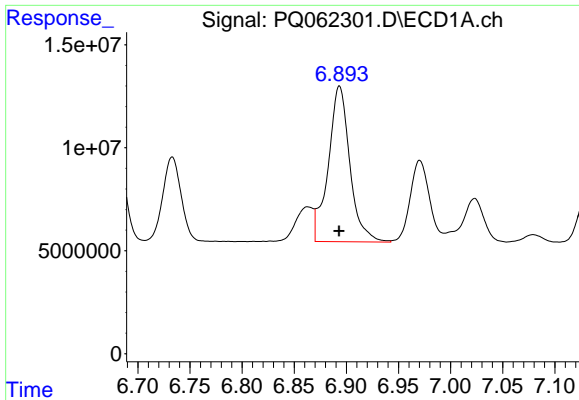
#33 AR-1260-3

R.T.: 6.676 min  
 Delta R.T.: 0.000 min  
 Response: 88101391  
 Conc: 498.94 ng/ml



#33 AR-1260-3

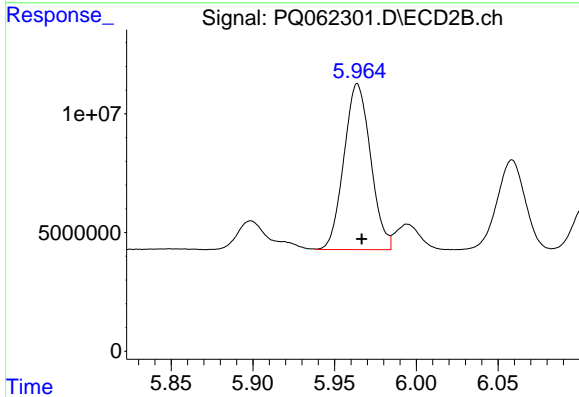
R.T.: 5.502 min  
 Delta R.T.: -0.002 min  
 Response: 104242943  
 Conc: 535.79 ng/ml



#34 AR-1260-4

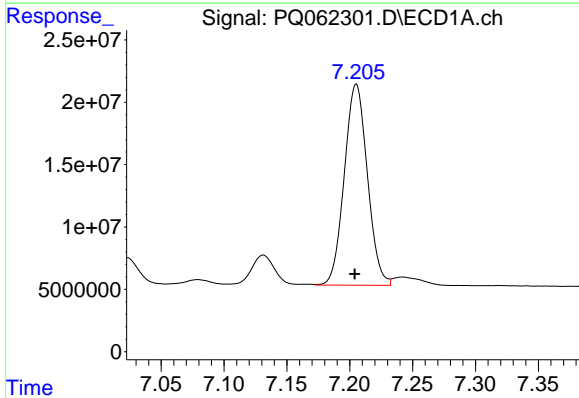
R.T.: 6.893 min  
 Delta R.T.: 0.000 min  
 Response: 108811623  
 Conc: 516.55 ng/ml

Instrument :  
 ECD\_Q  
 ClientSampleId :  
 AR1660CCC500



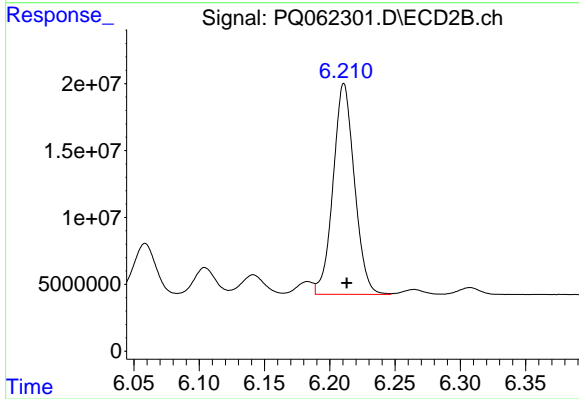
#34 AR-1260-4

R.T.: 5.964 min  
 Delta R.T.: -0.003 min  
 Response: 79437347  
 Conc: 544.61 ng/ml



#35 AR-1260-5

R.T.: 7.205 min  
 Delta R.T.: 0.001 min  
 Response: 206160565  
 Conc: 502.08 ng/ml



#35 AR-1260-5

R.T.: 6.211 min  
 Delta R.T.: -0.002 min  
 Response: 179173759  
 Conc: 539.58 ng/ml