

Data Path : Z:\pestpcbsrv\HPCHEM1\ECD_Q\Data\PQ071723\
 Data File : PQ062304.D
 Signal(s) : Signal #1: ECD1A.ch Signal #2: ECD2B.ch
 Acq On : 17 Jul 2023 21:35
 Operator : YP\AJ
 Sample : AR1254CCC500
 Misc :
 ALS Vial : 6 Sample Multiplier: 1

Instrument :
 ECD_Q
 ClientSampleId :
 AR1254CCC500

Integration File signal 1: autoint1.e
 Integration File signal 2: autoint2.e
 Quant Time: Jul 18 02:33:16 2023
 Quant Method : Z:\pestpcbsrv\HPCHEM1\ECD_Q\Method\PQ070123.M
 Quant Title : GC EXTRACTABLES
 QLast Update : Tue Jul 04 05:32:27 2023
 Response via : Initial Calibration
 Integrator: ChemStation

Volume Inj. : 2 µl
 Signal #1 Phase : ZB-MR1 Signal #2 Phase: ZB-MR2
 Signal #1 Info : 30Mx0.32mmx 0.50µ Signal #2 Info : 30M x 0.32mm x 0.25µm

Compound	RT#1	RT#2	Resp#1	Resp#2	ng/ml	ng/ml

System Monitoring Compounds						
1) SA Tetrachlo...	3.404	2.758	238.1E6	142.0E6	48.808	56.612
2) SA Decachlor...	8.584	7.526	164.4E6	166.3E6	45.265	49.921
Target Compounds						
26) L6 AR-1254-1	5.326	4.514	88818541	81156643	477.978	502.634
27) L6 AR-1254-2	5.544	4.662	138.3E6	73511495	475.779	499.315
28) L6 AR-1254-3	5.897	5.042	144.0E6	115.5E6	468.975	494.049
29) L6 AR-1254-4	6.182	5.268	107.6E6	76172564	463.259	499.773
30) L6 AR-1254-5	6.595	5.674	119.9E6	115.7E6	466.930	501.449

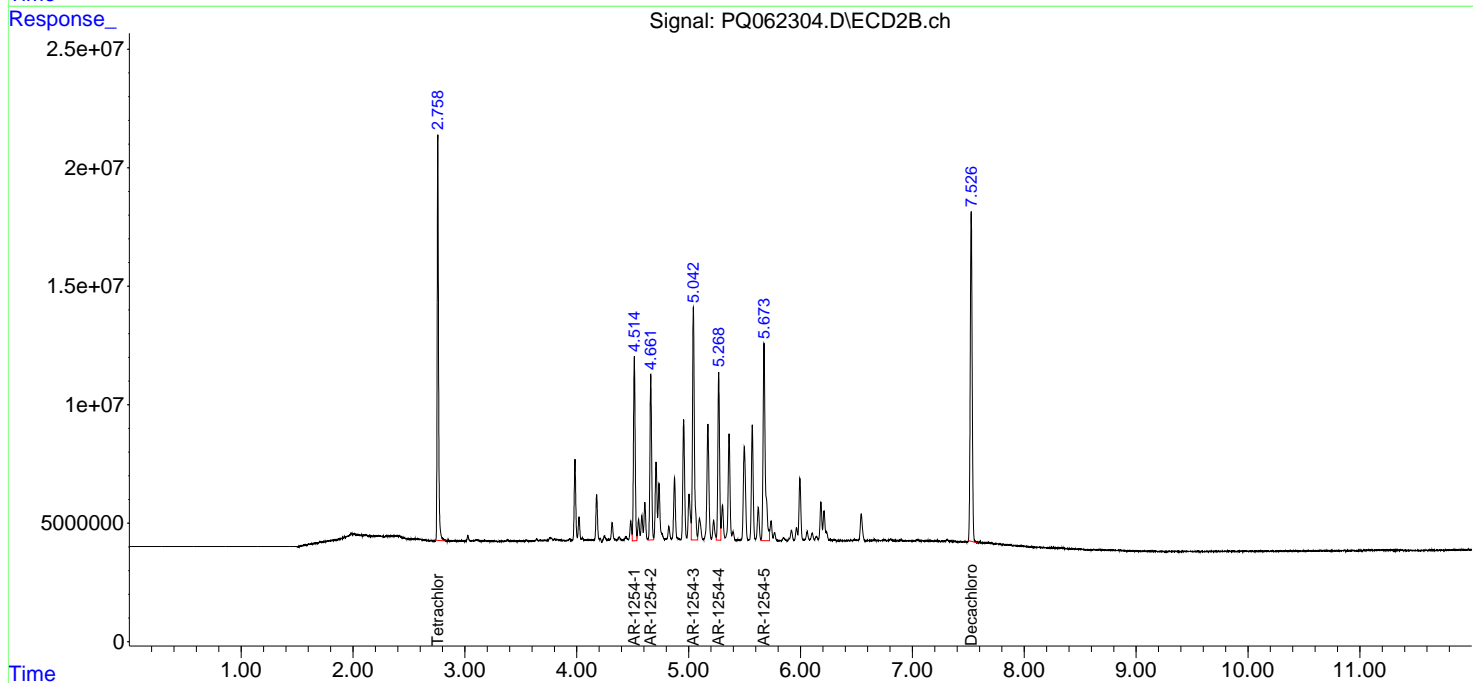
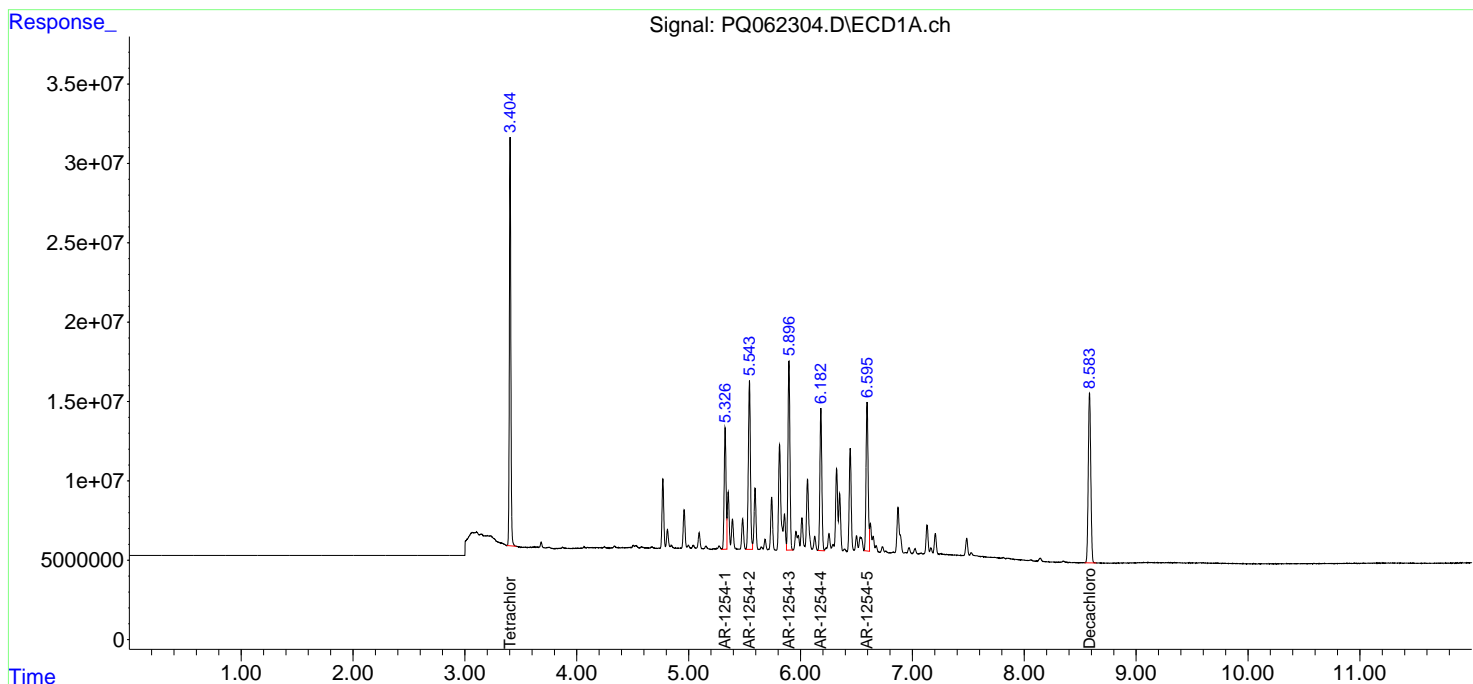
(f)=RT Delta > 1/2 Window (#)=Amounts differ by > 25% (m)=manual int.

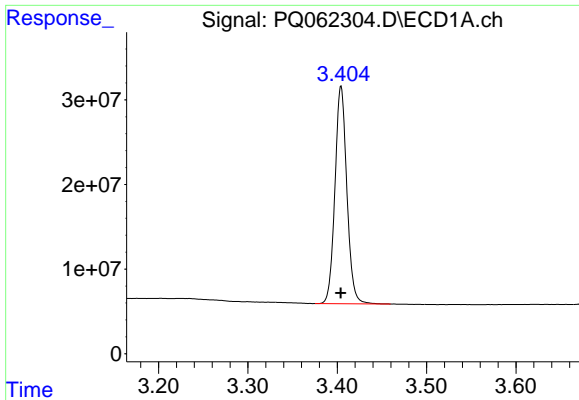
Data Path : Z:\pestpcbsrv\HPCHEM1\ECD_Q\Data\PQ071723\
 Data File : PQ062304.D
 Signal(s) : Signal #1: ECD1A.ch Signal #2: ECD2B.ch
 Acq On : 17 Jul 2023 21:35
 Operator : YP\AJ
 Sample : AR1254CCC500
 Misc :
 ALS Vial : 6 Sample Multiplier: 1

Instrument :
 ECD_Q
 ClientSampleId :
 AR1254CCC500

Integration File signal 1: autoint1.e
 Integration File signal 2: autoint2.e
 Quant Time: Jul 18 02:33:16 2023
 Quant Method : Z:\pestpcbsrv\HPCHEM1\ECD_Q\Method\PQ070123.M
 Quant Title : GC EXTRACTABLES
 QLast Update : Tue Jul 04 05:32:27 2023
 Response via : Initial Calibration
 Integrator: ChemStation

Volume Inj. : 2 µl
 Signal #1 Phase : ZB-MR1 Signal #2 Phase: ZB-MR2
 Signal #1 Info : 30Mx0.32mmx 0.50µ Signal #2 Info : 30M x 0.32mm x 0.25µm

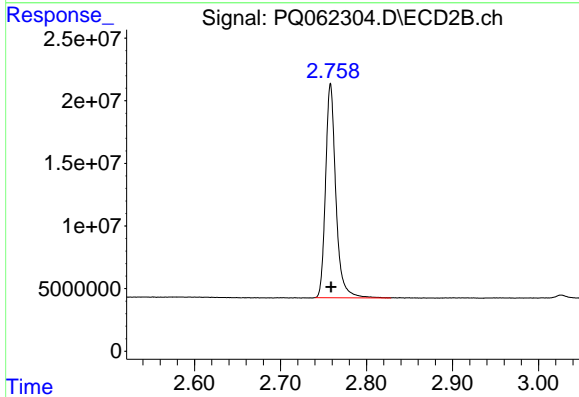




#1 Tetrachloro-m-xylene

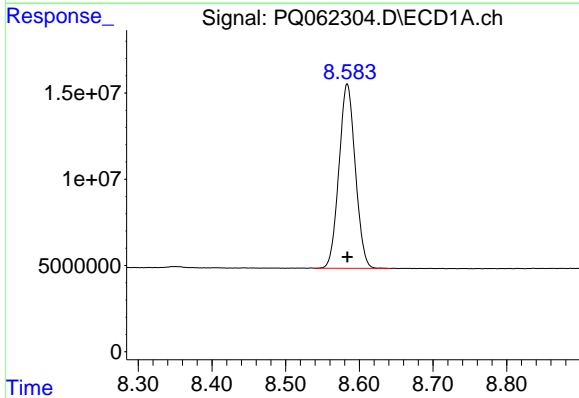
R.T.: 3.404 min
 Delta R.T.: 0.000 min
 Response: 238094568
 Conc: 48.81 ng/ml

Instrument :
 ECD_Q
 ClientSampleId :
 AR1254CCC500



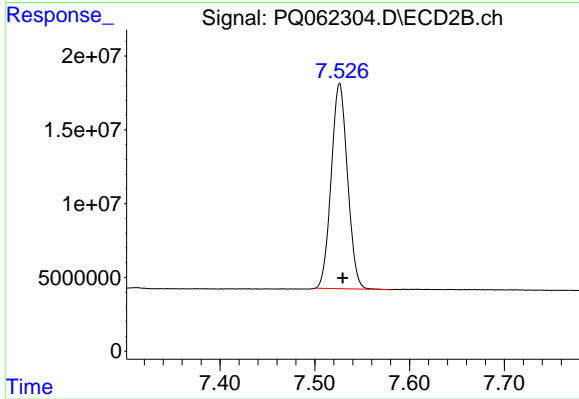
#1 Tetrachloro-m-xylene

R.T.: 2.758 min
 Delta R.T.: 0.000 min
 Response: 142046242
 Conc: 56.61 ng/ml



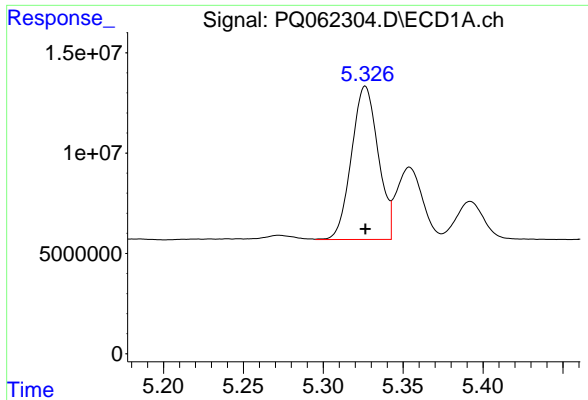
#2 Decachlorobiphenyl

R.T.: 8.584 min
 Delta R.T.: 0.000 min
 Response: 164436585
 Conc: 45.26 ng/ml



#2 Decachlorobiphenyl

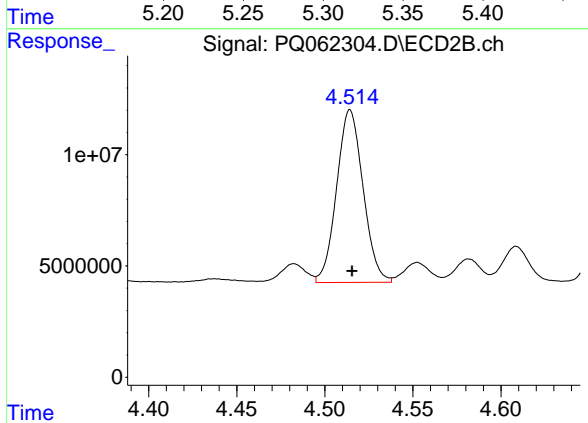
R.T.: 7.526 min
 Delta R.T.: -0.003 min
 Response: 166345914
 Conc: 49.92 ng/ml



#26 AR-1254-1

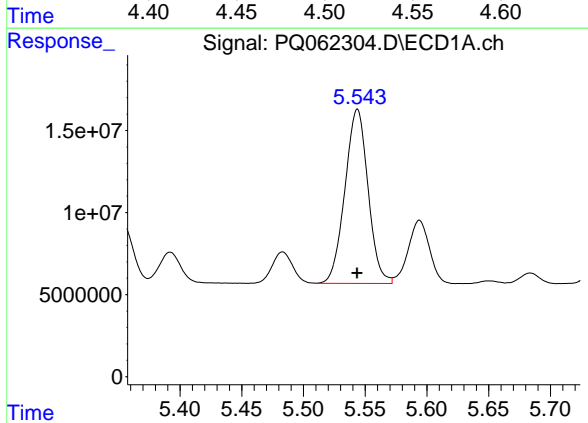
R.T.: 5.326 min
 Delta R.T.: 0.000 min
 Response: 88818541
 Conc: 477.98 ng/ml

Instrument :
 ECD_Q
 ClientSampleId :
 AR1254CCC500



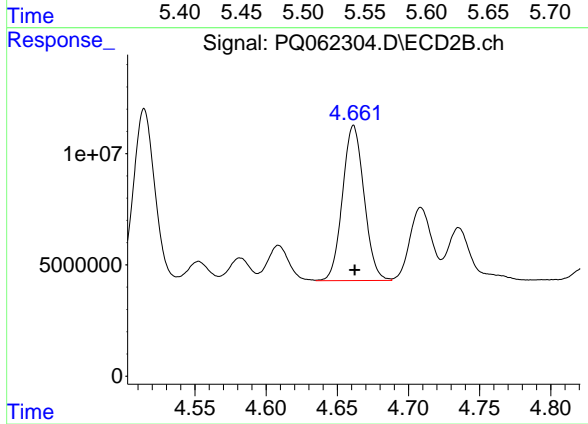
#26 AR-1254-1

R.T.: 4.514 min
 Delta R.T.: -0.001 min
 Response: 81156643
 Conc: 502.63 ng/ml



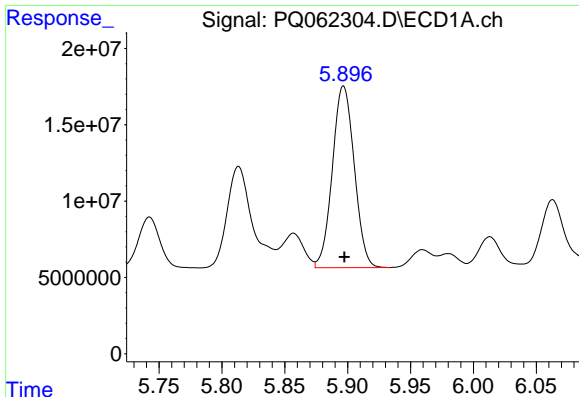
#27 AR-1254-2

R.T.: 5.544 min
 Delta R.T.: 0.000 min
 Response: 138315109
 Conc: 475.78 ng/ml



#27 AR-1254-2

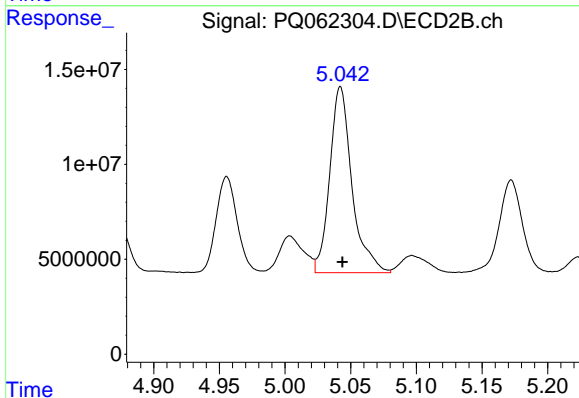
R.T.: 4.662 min
 Delta R.T.: 0.000 min
 Response: 73511495
 Conc: 499.32 ng/ml



#28 AR-1254-3

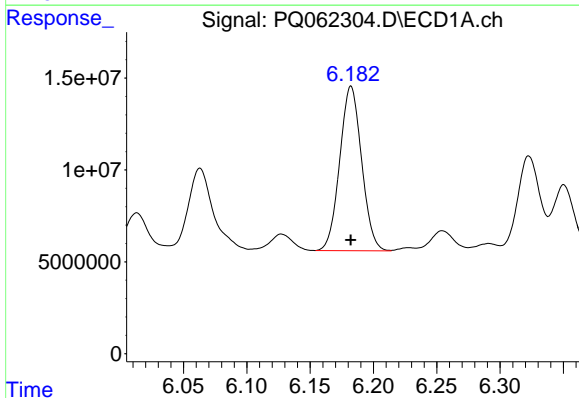
R.T.: 5.897 min
 Delta R.T.: 0.000 min
 Response: 144041200
 Conc: 468.98 ng/ml

Instrument :
 ECD_Q
 ClientSampleId :
 AR1254CCC500



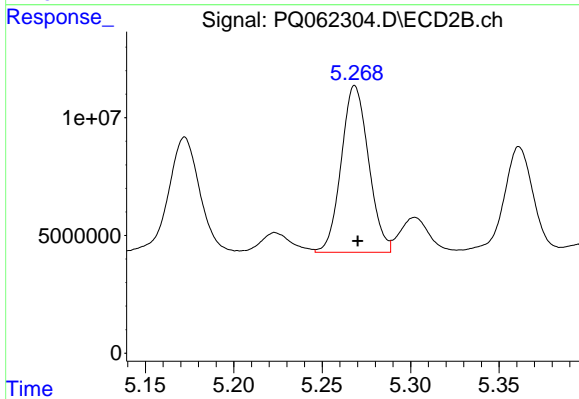
#28 AR-1254-3

R.T.: 5.042 min
 Delta R.T.: -0.001 min
 Response: 115459823
 Conc: 494.05 ng/ml



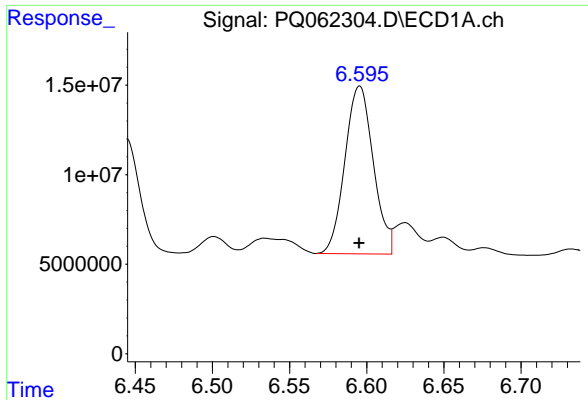
#29 AR-1254-4

R.T.: 6.182 min
 Delta R.T.: 0.000 min
 Response: 107565540
 Conc: 463.26 ng/ml



#29 AR-1254-4

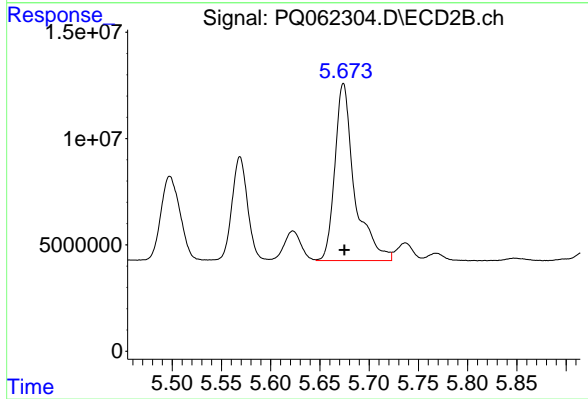
R.T.: 5.268 min
 Delta R.T.: -0.002 min
 Response: 76172564
 Conc: 499.77 ng/ml



#30 AR-1254-5

R.T.: 6.595 min
Delta R.T.: 0.000 min
Response: 119940370
Conc: 466.93 ng/ml

Instrument :
ECD_Q
ClientSampleId :
AR1254CCC500



#30 AR-1254-5

R.T.: 5.674 min
Delta R.T.: -0.001 min
Response: 115732562
Conc: 501.45 ng/ml