

Data Path : Z:\pestpcbsrv\HPCHEM1\ECD_Q\Data\PQ071723\
 Data File : PQ062325.D
 Signal(s) : Signal #1: ECD1A.ch Signal #2: ECD2B.ch
 Acq On : 18 Jul 2023 06:07
 Operator : YP\AJ
 Sample : AR1242CCC500
 Misc :
 ALS Vial : 4 Sample Multiplier: 1

Instrument :
 ECD_Q
ClientSampleId :
 AR1242CCC500

Integration File signal 1: autoint1.e
 Integration File signal 2: autoint2.e
 Quant Time: Jul 18 07:07:01 2023
 Quant Method : Z:\pestpcbsrv\HPCHEM1\ECD_Q\Method\PQ070123.M
 Quant Title : GC EXTRACTABLES
 QLast Update : Tue Jul 04 05:32:27 2023
 Response via : Initial Calibration
 Integrator: ChemStation

Volume Inj. : 2 µl
 Signal #1 Phase : ZB-MR1 Signal #2 Phase: ZB-MR2
 Signal #1 Info : 30Mx0.32mmx 0.50µ Signal #2 Info : 30M x 0.32mm x 0.25µm

Compound	RT#1	RT#2	Resp#1	Resp#2	ng/ml	ng/ml

System Monitoring Compounds						
1) SA Tetrachlo...	3.405	2.758	241.4E6	138.7E6	49.493	55.261
2) SA Decachlor...	8.583	7.525	147.9E6	144.5E6	40.714	43.366
Target Compounds						
16) L4 AR-1242-1	4.505	3.759	61606345	39136023	471.342	506.032
17) L4 AR-1242-2	4.523	3.774	91141984	57392897	469.469	516.315
18) L4 AR-1242-3	4.581	3.934	56536749	30560509	467.849	521.724
19) L4 AR-1242-4	4.673	4.020	46663718	29314141	478.672	500.001
20) L4 AR-1242-5	5.389	4.515	43271005	42050767	452.011	507.292

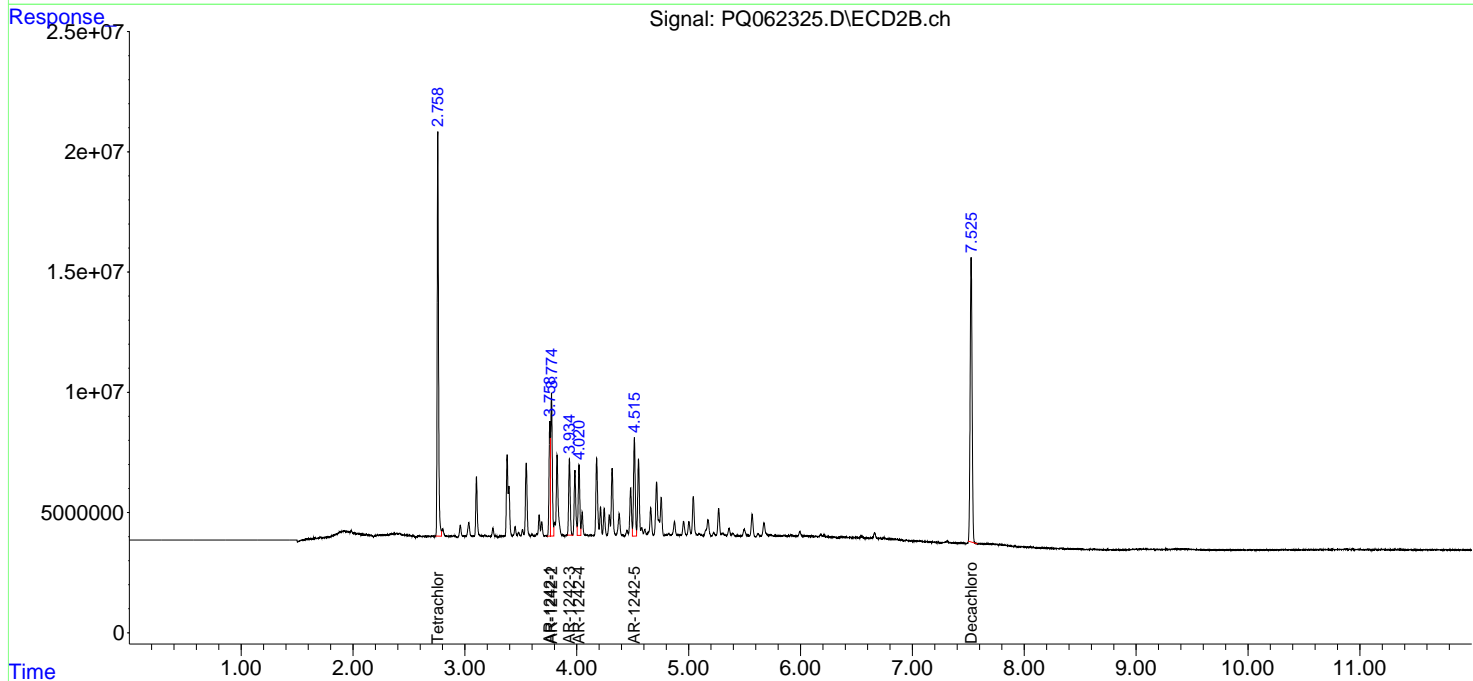
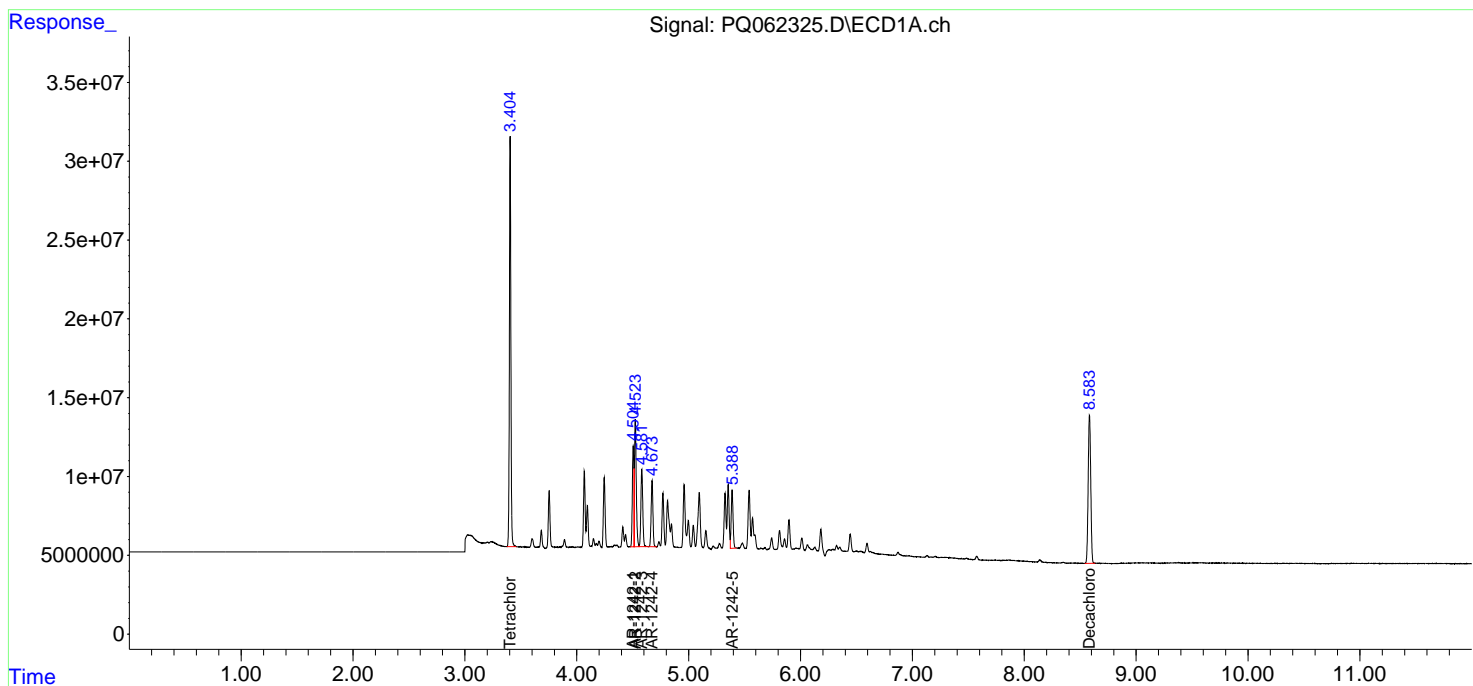
(f)=RT Delta > 1/2 Window (#)=Amounts differ by > 25% (m)=manual int.

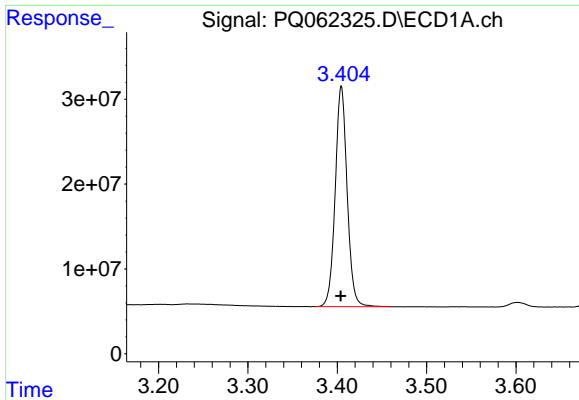
Data Path : Z:\pestpcbsrv\HPCHEM1\ECD_Q\Data\PQ071723\
 Data File : PQ062325.D
 Signal(s) : Signal #1: ECD1A.ch Signal #2: ECD2B.ch
 Acq On : 18 Jul 2023 06:07
 Operator : YP\AJ
 Sample : AR1242CCC500
 Misc :
 ALS Vial : 4 Sample Multiplier: 1

Instrument :
 ECD_Q
 ClientSampleId :
 AR1242CCC500

Integration File signal 1: autoint1.e
 Integration File signal 2: autoint2.e
 Quant Time: Jul 18 07:07:01 2023
 Quant Method : Z:\pestpcbsrv\HPCHEM1\ECD_Q\Method\PQ070123.M
 Quant Title : GC EXTRACTABLES
 QLast Update : Tue Jul 04 05:32:27 2023
 Response via : Initial Calibration
 Integrator: ChemStation

Volume Inj. : 2 µl
 Signal #1 Phase : ZB-MR1 Signal #2 Phase: ZB-MR2
 Signal #1 Info : 30Mx0.32mmx 0.50µ Signal #2 Info : 30M x 0.32mm x 0.25µm

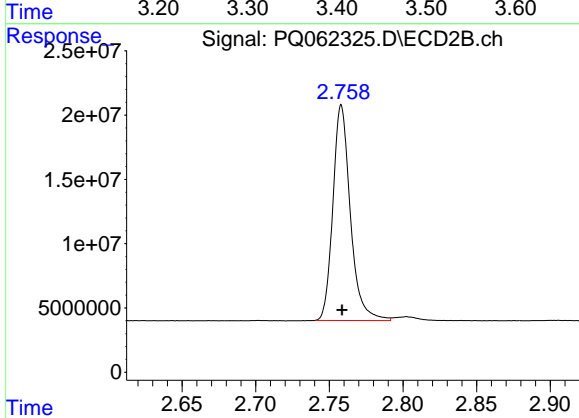




#1 Tetrachloro-m-xylene

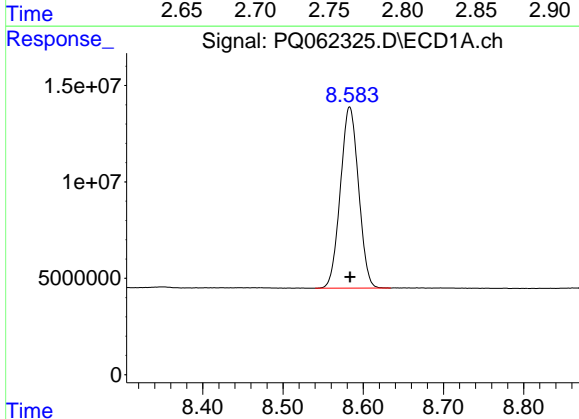
R.T.: 3.405 min
 Delta R.T.: 0.000 min
 Response: 241435380
 Conc: 49.49 ng/ml

Instrument :
 ECD_Q
 ClientSampleId :
 AR1242CCC500



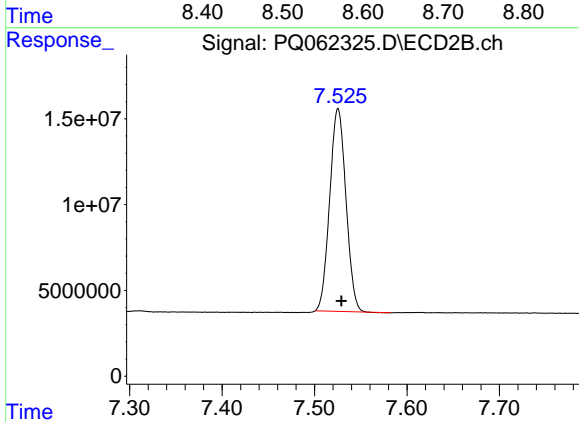
#1 Tetrachloro-m-xylene

R.T.: 2.758 min
 Delta R.T.: 0.000 min
 Response: 138656196
 Conc: 55.26 ng/ml



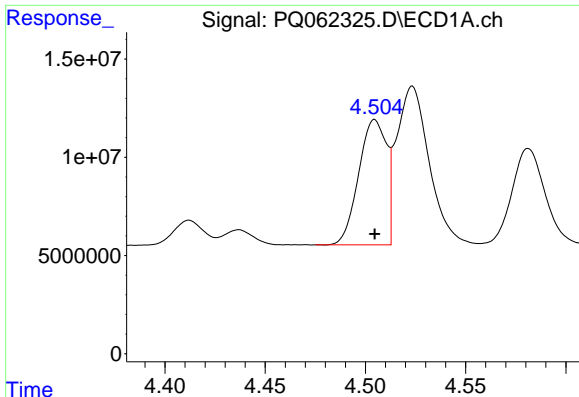
#2 Decachlorobiphenyl

R.T.: 8.583 min
 Delta R.T.: 0.000 min
 Response: 147904647
 Conc: 40.71 ng/ml



#2 Decachlorobiphenyl

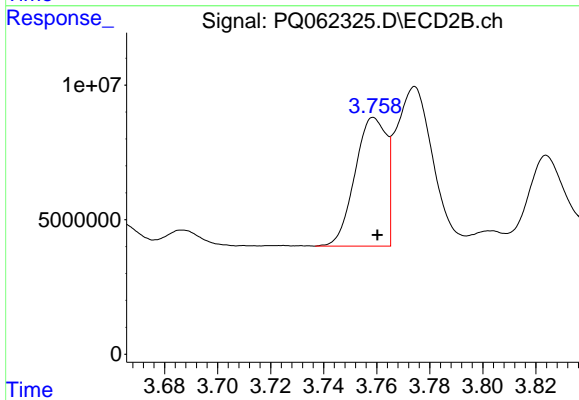
R.T.: 7.525 min
 Delta R.T.: -0.004 min
 Response: 144502106
 Conc: 43.37 ng/ml



#16 AR-1242-1

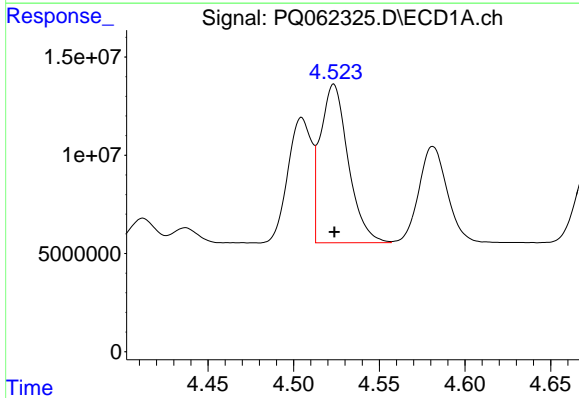
R.T.: 4.505 min
 Delta R.T.: 0.000 min
 Response: 61606345
 Conc: 471.34 ng/ml

Instrument :
 ECD_Q
 ClientSampleId :
 AR1242CCC500



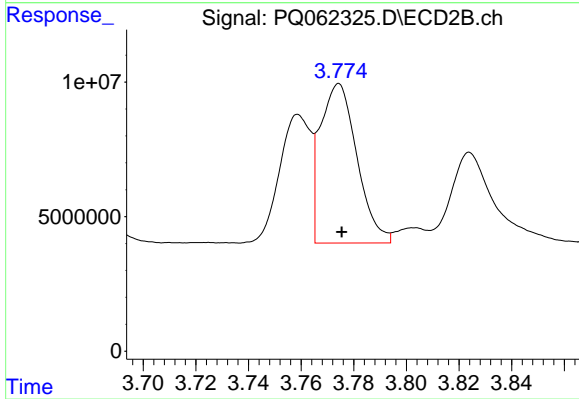
#16 AR-1242-1

R.T.: 3.759 min
 Delta R.T.: -0.001 min
 Response: 39136023
 Conc: 506.03 ng/ml



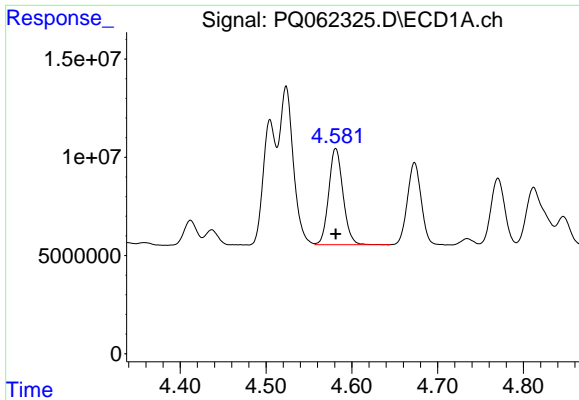
#17 AR-1242-2

R.T.: 4.523 min
 Delta R.T.: 0.000 min
 Response: 91141984
 Conc: 469.47 ng/ml



#17 AR-1242-2

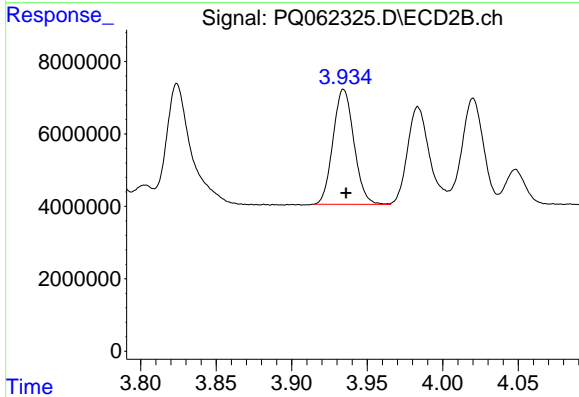
R.T.: 3.774 min
 Delta R.T.: -0.001 min
 Response: 57392897
 Conc: 516.32 ng/ml



#18 AR-1242-3

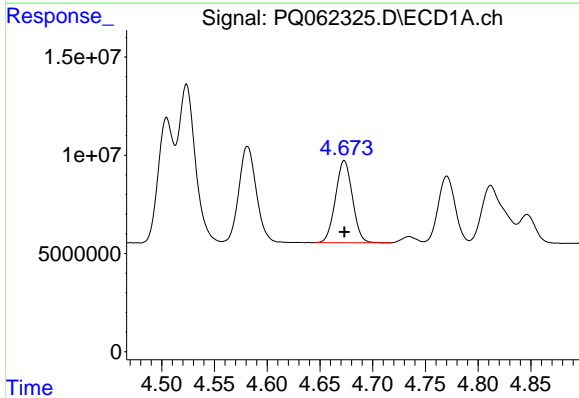
R.T.: 4.581 min
 Delta R.T.: 0.000 min
 Response: 56536749
 Conc: 467.85 ng/ml

Instrument :
 ECD_Q
 ClientSampleId :
 AR1242CCC500



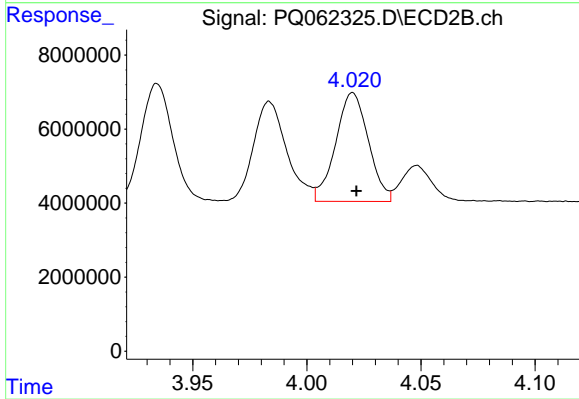
#18 AR-1242-3

R.T.: 3.934 min
 Delta R.T.: -0.002 min
 Response: 30560509
 Conc: 521.72 ng/ml



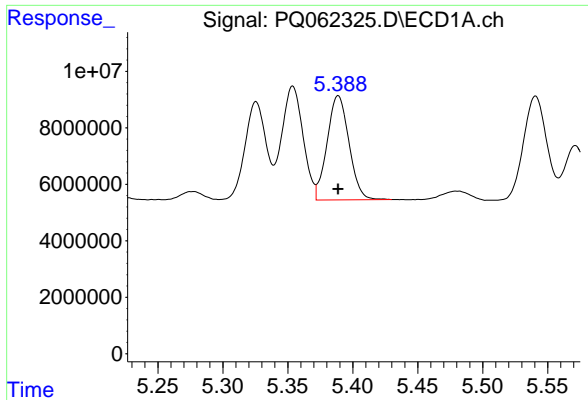
#19 AR-1242-4

R.T.: 4.673 min
 Delta R.T.: 0.000 min
 Response: 46663718
 Conc: 478.67 ng/ml



#19 AR-1242-4

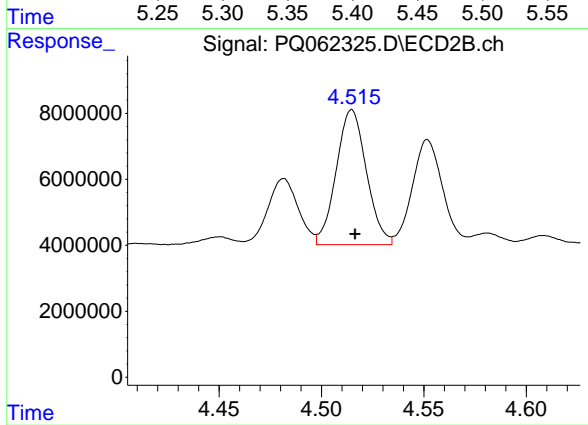
R.T.: 4.020 min
 Delta R.T.: -0.002 min
 Response: 29314141
 Conc: 500.00 ng/ml



#20 AR-1242-5

R.T.: 5.389 min
Delta R.T.: 0.000 min
Response: 43271005
Conc: 452.01 ng/ml

Instrument :
ECD_Q
ClientSampleId :
AR1242CCC500



#20 AR-1242-5

R.T.: 4.515 min
Delta R.T.: -0.002 min
Response: 42050767
Conc: 507.29 ng/ml