

Data Path : Z:\pestpcbsrv\HPCHEM1\ECD_Q\Data\PQ072023\
 Data File : PQ062451.D
 Signal(s) : Signal #1: ECD1A.ch Signal #2: ECD2B.ch
 Acq On : 20 Jul 2023 18:30
 Operator : YP\AJ
 Sample : 03664-07
 Misc :
 ALS Vial : 27 Sample Multiplier: 1

Instrument :
 ECD_Q
ClientSampleId :
 A462

Manual Integrations
APPROVED

Reviewed By :Yogesh Patel 07/21/2023
 Supervised By :Ankita Jodhani 07/21/2023

Integration File signal 1: autoint1.e
 Integration File signal 2: autoint2.e
 Quant Time: Jul 20 22:08:20 2023
 Quant Method : Z:\pestpcbsrv\HPCHEM1\ECD_Q\Method\PQ070123.M
 Quant Title : GC EXTRACTABLES
 QLast Update : Tue Jul 04 05:32:27 2023
 Response via : Initial Calibration
 Integrator: ChemStation

Volume Inj. : 2 µl
 Signal #1 Phase : ZB-MR1 Signal #2 Phase: ZB-MR2
 Signal #1 Info : 30Mx0.32mmx 0.50µ Signal #2 Info : 30M x 0.32mm x 0.25µm

| Compound | RT#1 | RT#2 | Resp#1 | Resp#2 | ng/ml | ng/ml |
|-----------------------------|-------|-------|----------|----------|--------|---------|
| ----- | | | | | | |
| System Monitoring Compounds | | | | | | |
| 1) SA Tetrachlo... | 3.401 | 2.755 | 70743224 | 44511795 | 14.502 | 17.740m |
| 2) SA Decachlor... | 8.582 | 7.525 | 36752866 | 35584473 | 10.117 | 10.679 |

Target Compounds

(f)=RT Delta > 1/2 Window (#)=Amounts differ by > 25% (m)=manual int.

Data Path : Z:\pestpcbsrv\HPCHEM1\ECD_Q\Data\PQ072023\
 Data File : PQ062451.D
 Signal(s) : Signal #1: ECD1A.ch Signal #2: ECD2B.ch
 Acq On : 20 Jul 2023 18:30
 Operator : YP\AJ
 Sample : 03664-07
 Misc :
 ALS Vial : 27 Sample Multiplier: 1

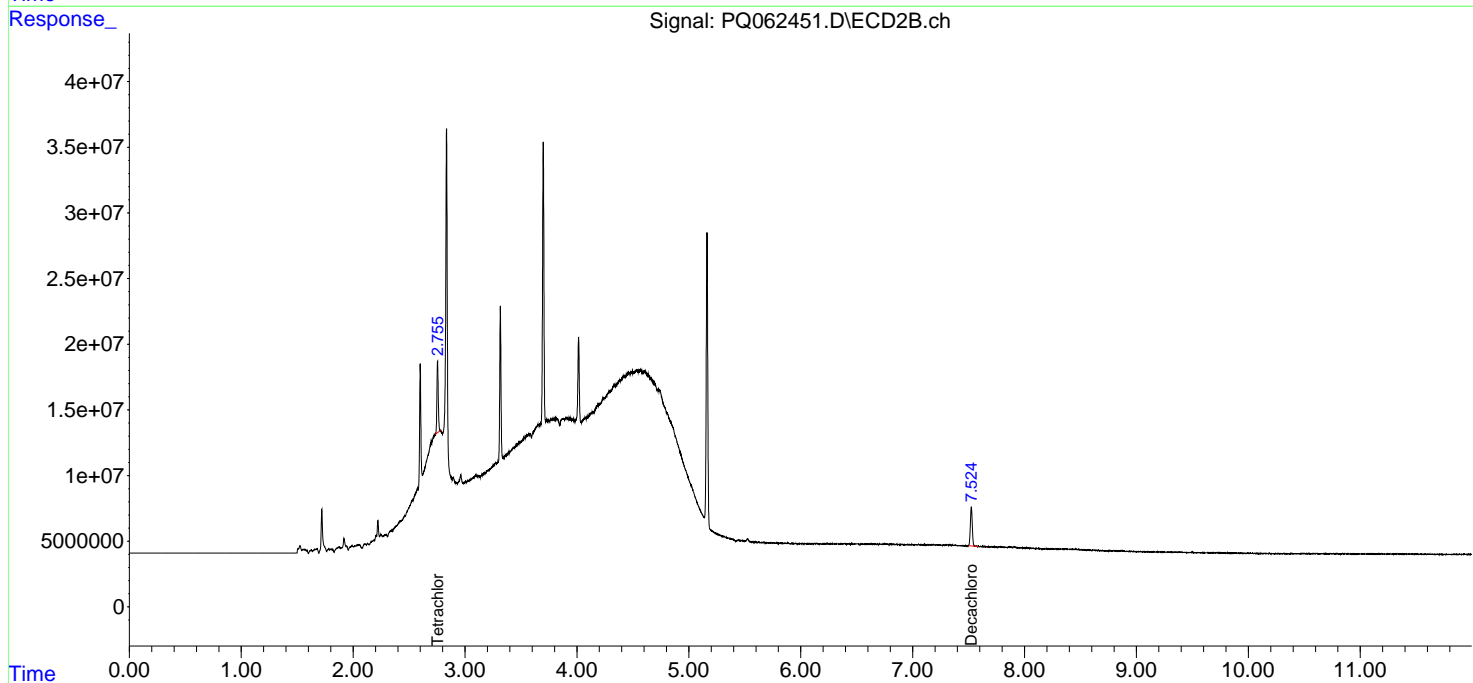
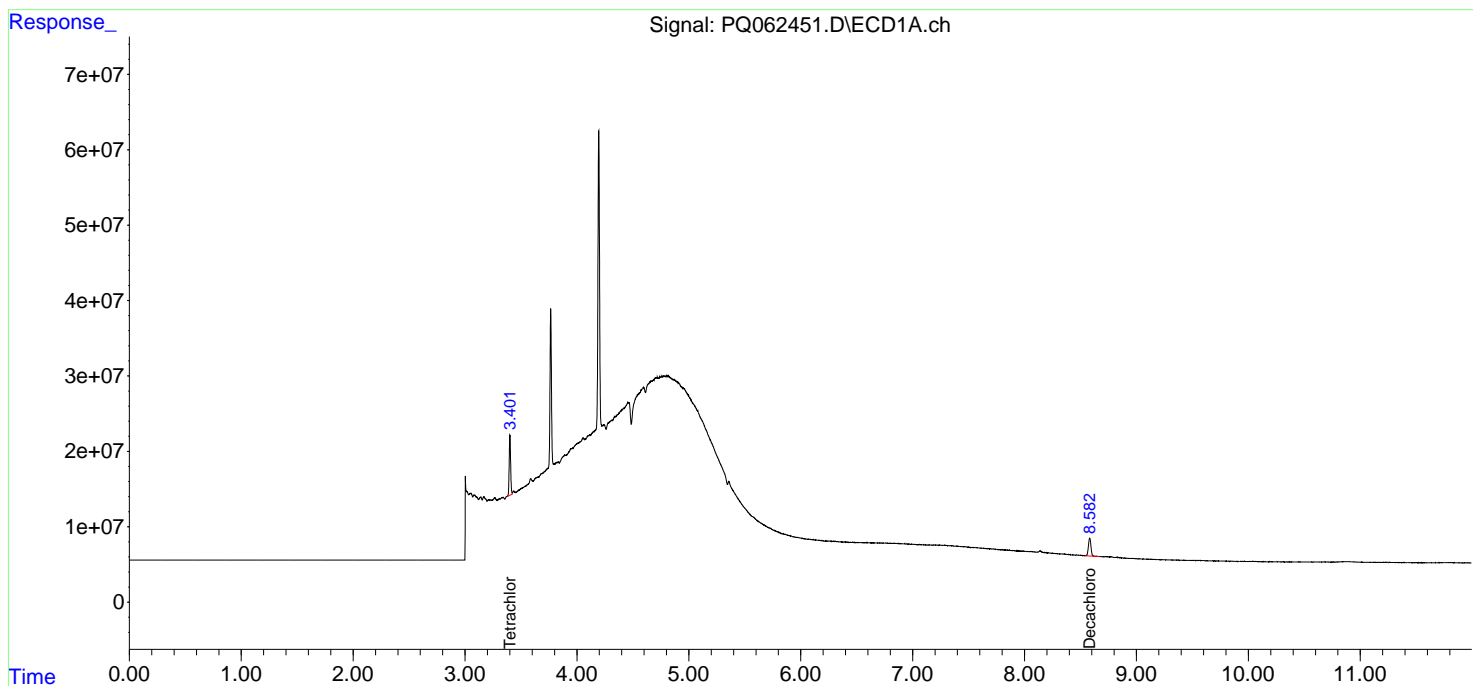
Instrument :
 ECD_Q
 ClientSampleId :
 A462

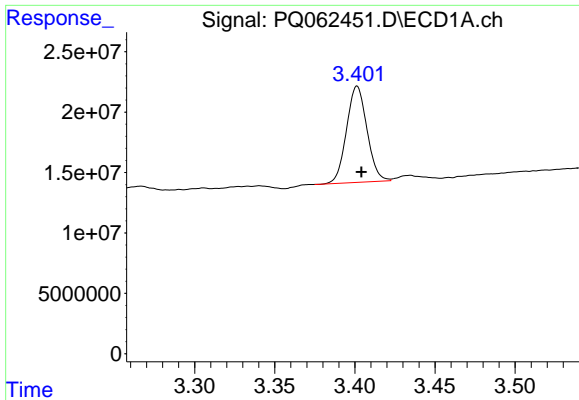
Manual Integrations
APPROVED

Reviewed By :Yogesh Patel 07/21/2023
 Supervised By :Ankita Jodhani 07/21/2023

Integration File signal 1: autoint1.e
 Integration File signal 2: autoint2.e
 Quant Time: Jul 20 22:08:20 2023
 Quant Method : Z:\pestpcbsrv\HPCHEM1\ECD_Q\Method\PQ070123.M
 Quant Title : GC EXTRACTABLES
 QLast Update : Tue Jul 04 05:32:27 2023
 Response via : Initial Calibration
 Integrator: ChemStation

Volume Inj. : 2 µl
 Signal #1 Phase : ZB-MR1 Signal #2 Phase: ZB-MR2
 Signal #1 Info : 30Mx0.32mmx 0.50µ Signal #2 Info : 30M x 0.32mm x 0.25µm





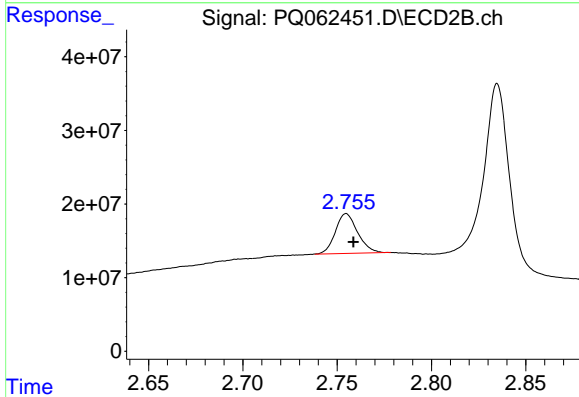
#1 Tetrachloro-m-xylene

R.T.: 3.401 min
 Delta R.T.: -0.003 min
 Response: 70743224
 Conc: 14.50 ng/ml

Instrument :
 ECD_Q
 ClientSampleId :
 A462

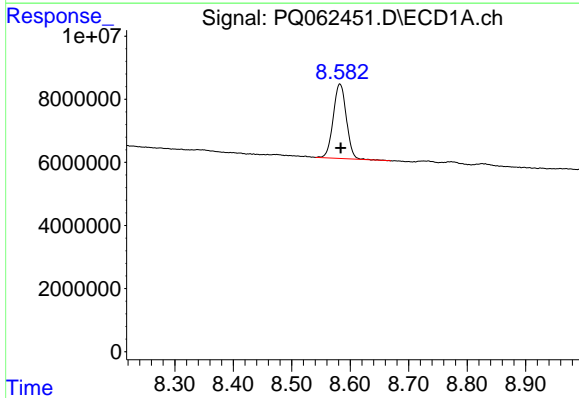
Manual Integrations
 APPROVED

Reviewed By :Yogesh Patel 07/21/2023
 Supervised By :Ankita Jodhani 07/21/2023



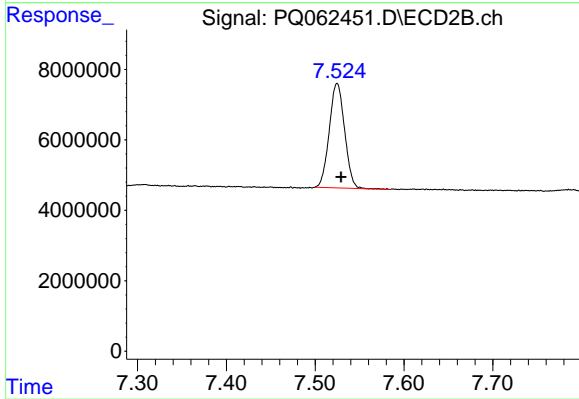
#1 Tetrachloro-m-xylene

R.T.: 2.755 min
 Delta R.T.: -0.004 min
 Response: 44511795
 Conc: 17.74 ng/ml m



#2 Decachlorobiphenyl

R.T.: 8.582 min
 Delta R.T.: -0.001 min
 Response: 36752866
 Conc: 10.12 ng/ml



#2 Decachlorobiphenyl

R.T.: 7.525 min
 Delta R.T.: -0.005 min
 Response: 35584473
 Conc: 10.68 ng/ml