

Data Path : Z:\pestpcbsrv\HPCHEM1\ECD\_Q\Data\PQ072023\  
 Data File : PQ062463.D  
 Signal(s) : Signal #1: ECD1A.ch Signal #2: ECD2B.ch  
 Acq On : 20 Jul 2023 22:54  
 Operator : YP\AJ  
 Sample : AR1660CCC500  
 Misc :  
 ALS Vial : 3 Sample Multiplier: 1

**Instrument :**  
 ECD\_Q  
**ClientSampleId :**  
 AR1660CCC500

**Manual Integrations**  
**APPROVED**

Reviewed By :Yogesh Patel 07/21/2023  
 Supervised By :Ankita Jodhani 07/21/2023

Integration File signal 1: autoint1.e  
 Integration File signal 2: autoint2.e  
 Quant Time: Jul 21 06:03:57 2023  
 Quant Method : Z:\pestpcbsrv\HPCHEM1\ECD\_Q\Method\PQ070123.M  
 Quant Title : GC EXTRACTABLES  
 QLast Update : Tue Jul 04 05:32:27 2023  
 Response via : Initial Calibration  
 Integrator: ChemStation

Volume Inj. : 2 µl  
 Signal #1 Phase : ZB-MR1 Signal #2 Phase: ZB-MR2  
 Signal #1 Info : 30Mx0.32mmx 0.50µ Signal #2 Info : 30M x 0.32mm x 0.25µm

Compound	RT#1	RT#2	Resp#1	Resp#2	ng/ml	ng/ml
-----						
System Monitoring Compounds						
1) SA Tetrachlo...	3.401	2.754	230.6E6	128.9E6	47.269	51.387m
2) SA Decachlor...	8.582	7.524	175.3E6	164.0E6	48.260	49.220m
Target Compounds						
3) L1 AR-1016-1	4.502	3.756	80027483	48235527	485.846	487.349
4) L1 AR-1016-2	4.521	3.771	118.8E6	70682838	480.592	490.176
5) L1 AR-1016-3	4.579	3.931	74284850	36424476	487.415	482.810
6) L1 AR-1016-4	4.671	3.981	60374330	31991801	481.664	487.092
7) L1 AR-1016-5	4.958	4.176	58635749	39549970	481.739	482.425
31) L7 AR-1260-1	6.060	5.169	113.1E6	82526561	479.353	495.497
32) L7 AR-1260-2	6.321	5.359	138.0E6	101.3E6	477.800	487.214
33) L7 AR-1260-3	6.674	5.500	83770317	93759234	474.414	481.907
34) L7 AR-1260-4	6.891	5.962	101.2E6	72569438	480.471	497.523
35) L7 AR-1260-5	7.203	6.208	199.6E6	167.1E6	486.215	503.175

(f)=RT Delta > 1/2 Window (#)=Amounts differ by > 25% (m)=manual int.

Data Path : Z:\pestpcbsrv\HPCHEM1\ECD\_Q\Data\PQ072023\  
 Data File : PQ062463.D  
 Signal(s) : Signal #1: ECD1A.ch Signal #2: ECD2B.ch  
 Acq On : 20 Jul 2023 22:54  
 Operator : YP\AJ  
 Sample : AR1660CCC500  
 Misc :  
 ALS Vial : 3 Sample Multiplier: 1

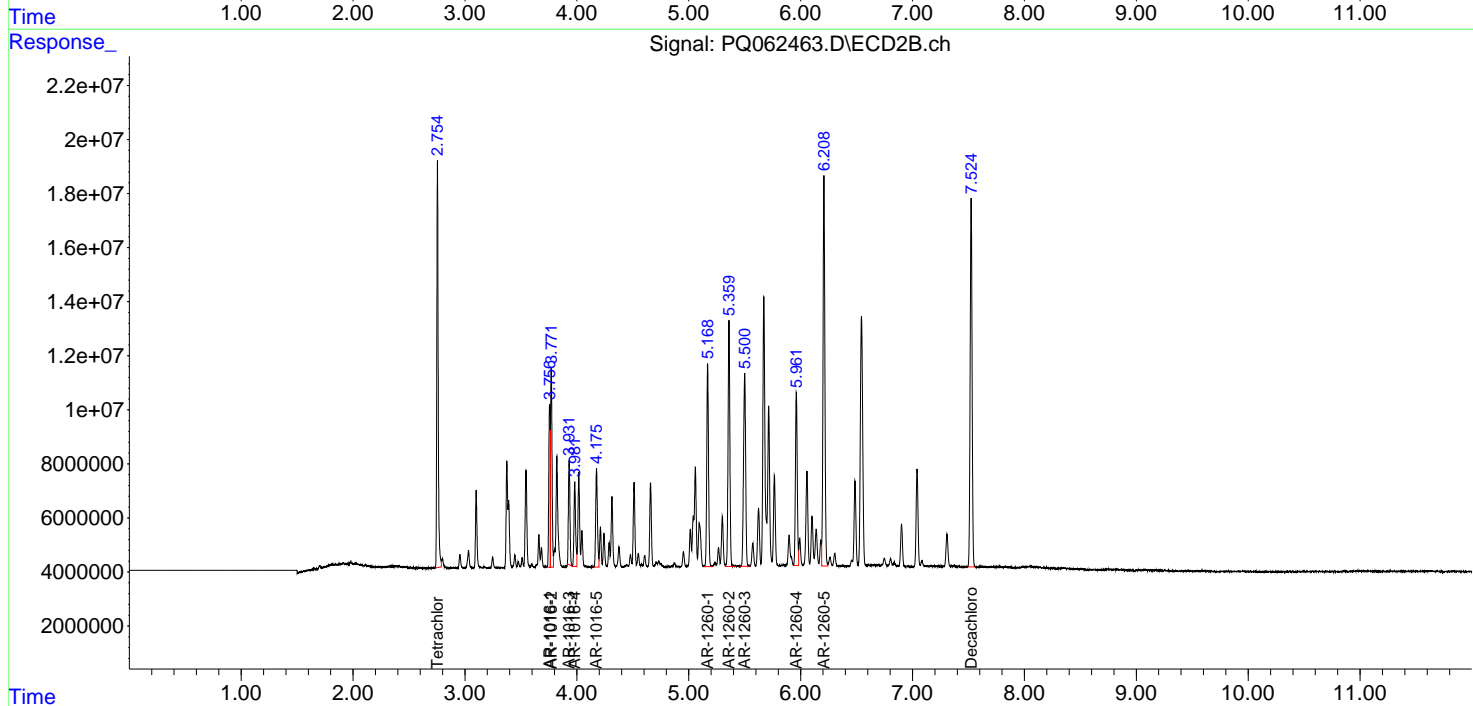
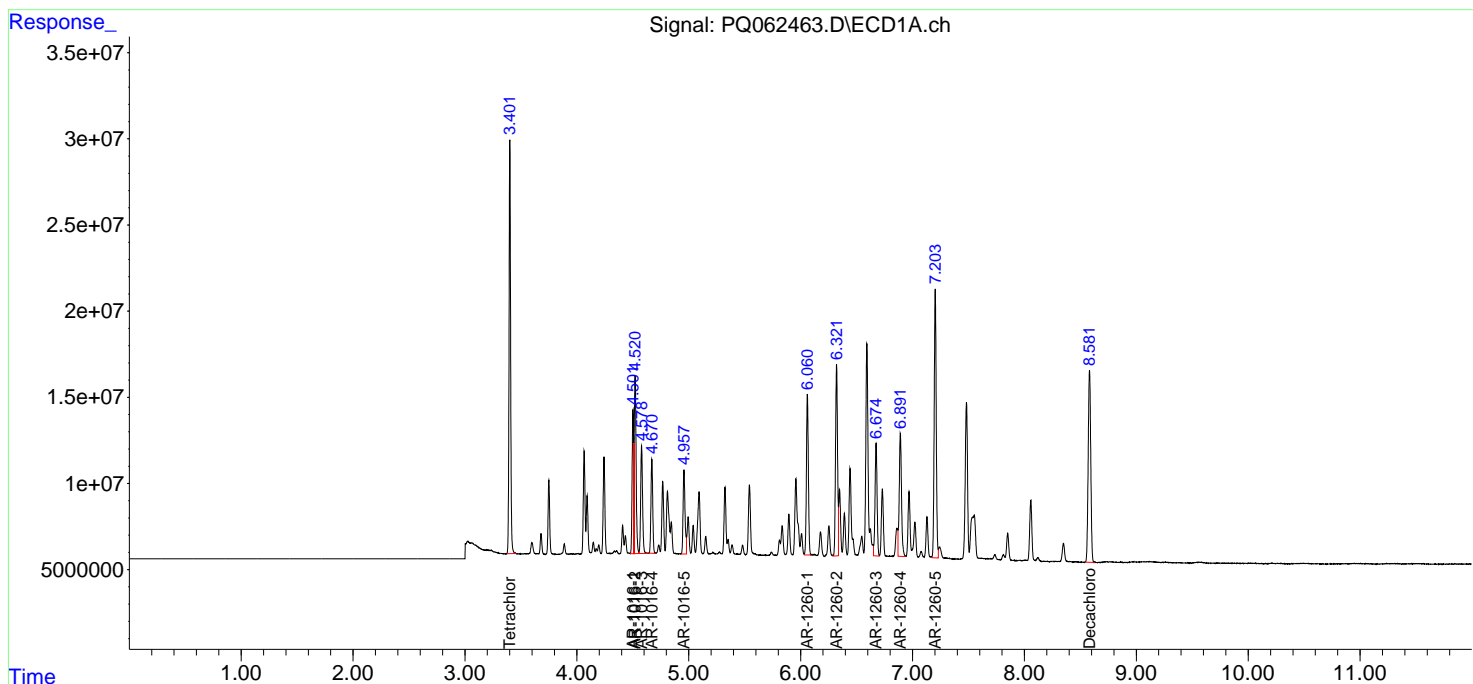
Instrument :  
 ECD\_Q  
 ClientSampleId :  
 AR1660CCC500

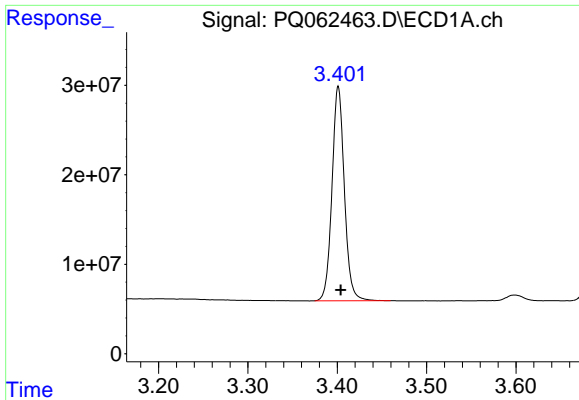
Manual Integrations  
 APPROVED

Reviewed By :Yogesh Patel 07/21/2023  
 Supervised By :Ankita Jodhani 07/21/2023

Integration File signal 1: autoint1.e  
 Integration File signal 2: autoint2.e  
 Quant Time: Jul 21 06:03:57 2023  
 Quant Method : Z:\pestpcbsrv\HPCHEM1\ECD\_Q\Method\PQ070123.M  
 Quant Title : GC EXTRACTABLES  
 QLast Update : Tue Jul 04 05:32:27 2023  
 Response via : Initial Calibration  
 Integrator: ChemStation

Volume Inj. : 2 µl  
 Signal #1 Phase : ZB-MR1 Signal #2 Phase: ZB-MR2  
 Signal #1 Info : 30Mx0.32mmx 0.50µ Signal #2 Info : 30M x 0.32mm x 0.25µm



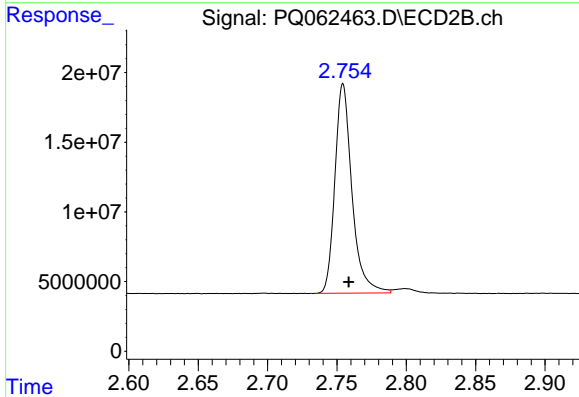


#1 Tetrachloro-m-xylene  
 R.T.: 3.401 min  
 Delta R.T.: -0.003 min  
 Response: 230589165  
 Conc: 47.27 ng/ml

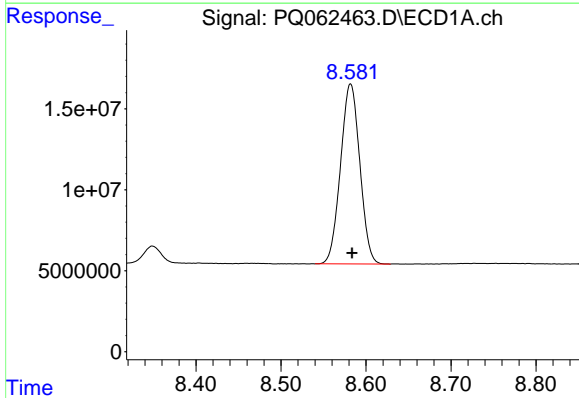
Instrument :  
 ECD\_Q  
 ClientSampleId :  
 AR1660CCC500

Manual Integrations  
 APPROVED

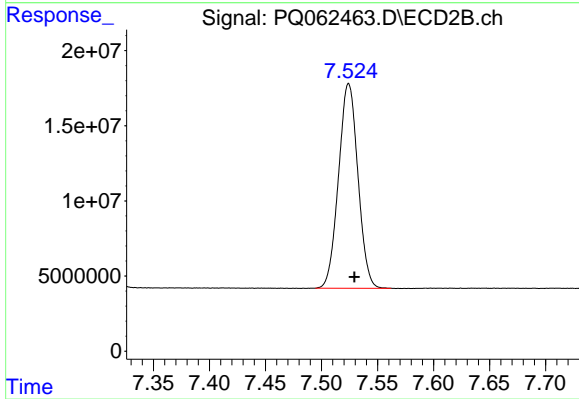
Reviewed By :Yogesh Patel 07/21/2023  
 Supervised By :Ankita Jodhani 07/21/2023



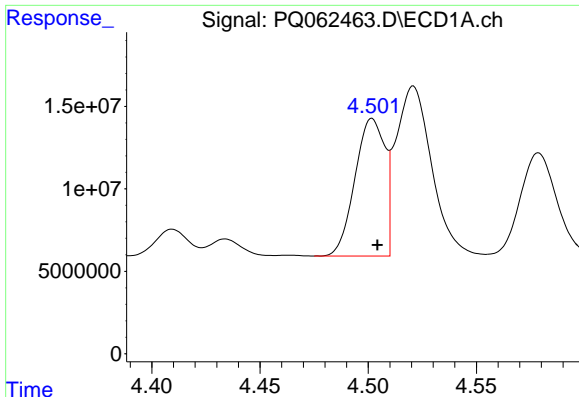
#1 Tetrachloro-m-xylene  
 R.T.: 2.754 min  
 Delta R.T.: -0.005 min  
 Response: 128935014  
 Conc: 51.39 ng/ml m



#2 Decachlorobiphenyl  
 R.T.: 8.582 min  
 Delta R.T.: -0.002 min  
 Response: 175317704  
 Conc: 48.26 ng/ml



#2 Decachlorobiphenyl  
 R.T.: 7.524 min  
 Delta R.T.: -0.005 min  
 Response: 164010129  
 Conc: 49.22 ng/ml m



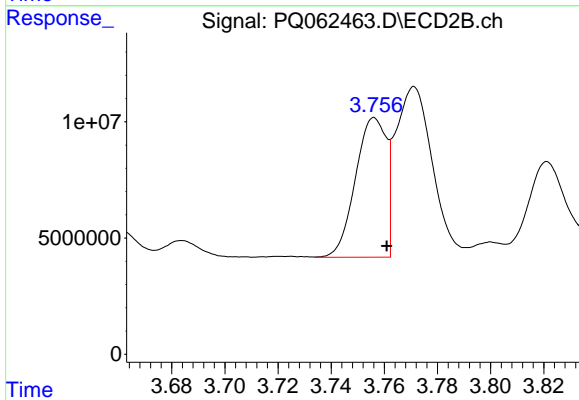
#3 AR-1016-1

R.T.: 4.502 min  
 Delta R.T.: -0.002 min  
 Response: 80027483  
 Conc: 485.85 ng/ml

Instrument :  
 ECD\_Q  
 ClientSampleId :  
 AR1660CCC500

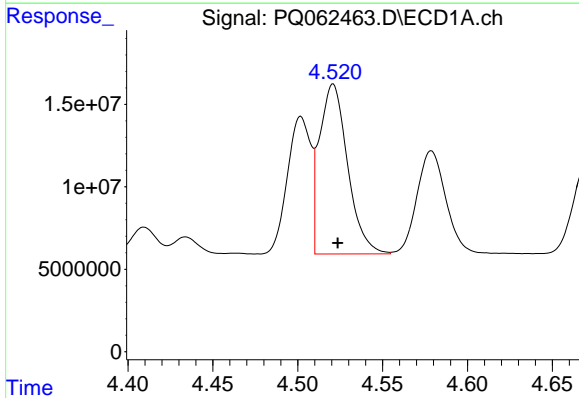
Manual Integrations  
 APPROVED

Reviewed By :Yogesh Patel 07/21/2023  
 Supervised By :Ankita Jodhani 07/21/2023



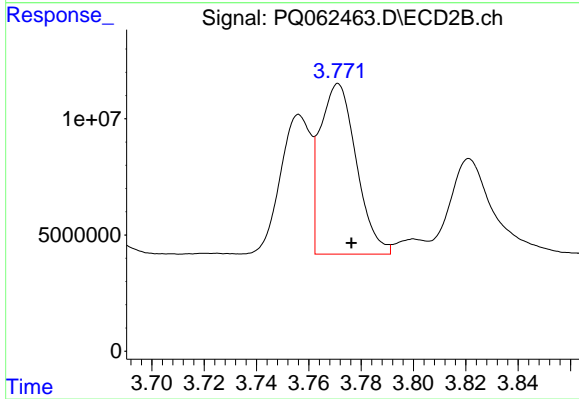
#3 AR-1016-1

R.T.: 3.756 min  
 Delta R.T.: -0.005 min  
 Response: 48235527  
 Conc: 487.35 ng/ml



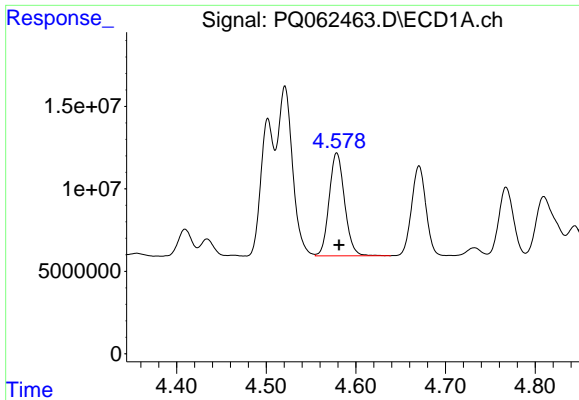
#4 AR-1016-2

R.T.: 4.521 min  
 Delta R.T.: -0.003 min  
 Response: 118835182  
 Conc: 480.59 ng/ml



#4 AR-1016-2

R.T.: 3.771 min  
 Delta R.T.: -0.005 min  
 Response: 70682838  
 Conc: 490.18 ng/ml



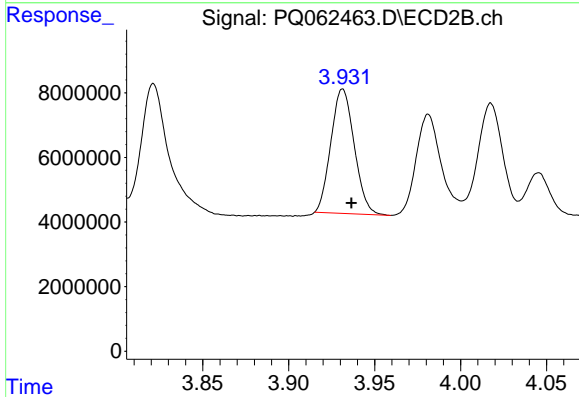
#5 AR-1016-3

R.T.: 4.579 min  
 Delta R.T.: -0.002 min  
 Response: 74284850  
 Conc: 487.42 ng/ml

Instrument :  
 ECD\_Q  
 ClientSampleId :  
 AR1660CCC500

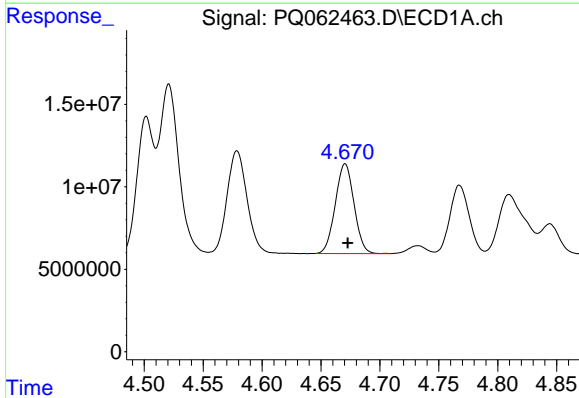
Manual Integrations  
 APPROVED

Reviewed By :Yogesh Patel 07/21/2023  
 Supervised By :Ankita Jodhani 07/21/2023



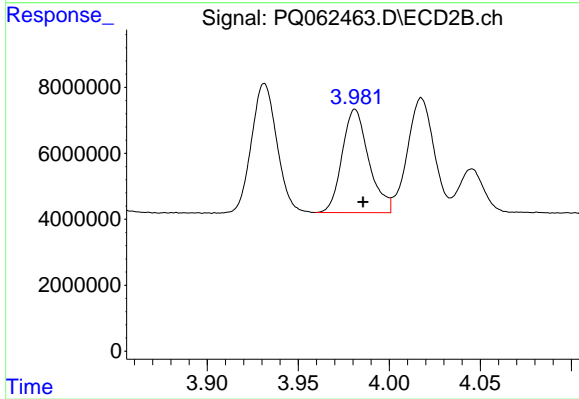
#5 AR-1016-3

R.T.: 3.931 min  
 Delta R.T.: -0.005 min  
 Response: 36424476  
 Conc: 482.81 ng/ml



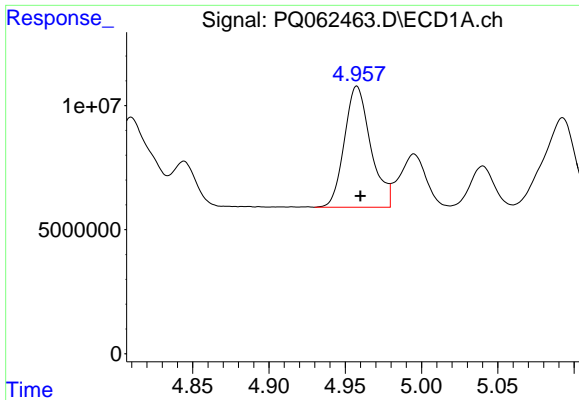
#6 AR-1016-4

R.T.: 4.671 min  
 Delta R.T.: -0.002 min  
 Response: 60374330  
 Conc: 481.66 ng/ml



#6 AR-1016-4

R.T.: 3.981 min  
 Delta R.T.: -0.004 min  
 Response: 31991801  
 Conc: 487.09 ng/ml



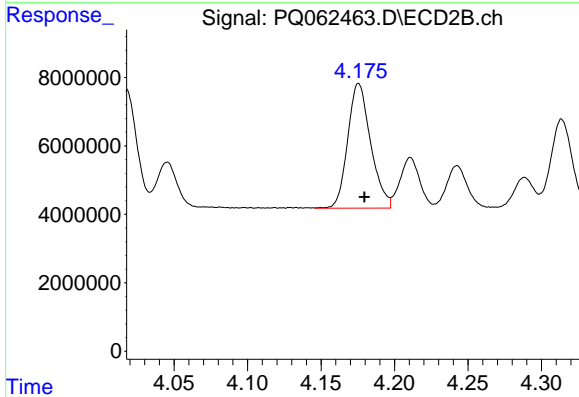
#7 AR-1016-5

R.T.: 4.958 min  
 Delta R.T.: -0.002 min  
 Response: 58635749  
 Conc: 481.74 ng/ml

Instrument :  
 ECD\_Q  
 ClientSampleId :  
 AR1660CCC500

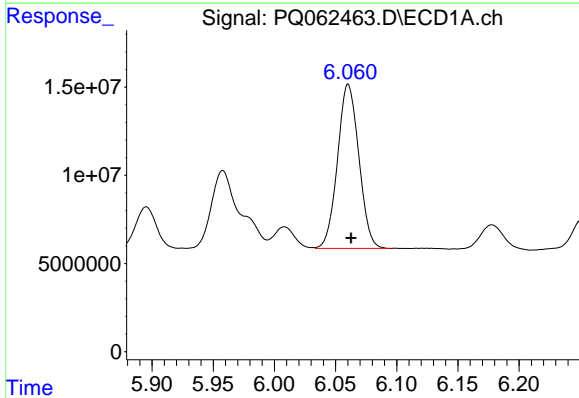
Manual Integrations  
 APPROVED

Reviewed By :Yogesh Patel 07/21/2023  
 Supervised By :Ankita Jodhani 07/21/2023



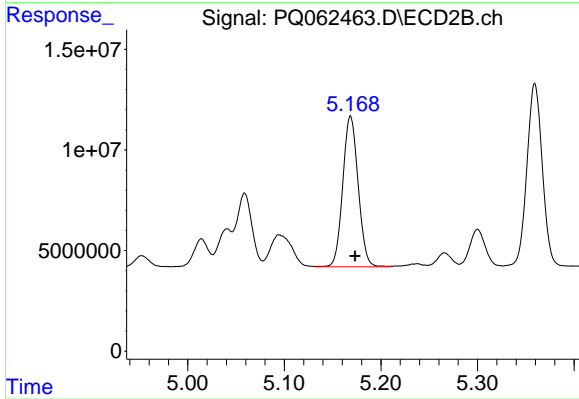
#7 AR-1016-5

R.T.: 4.176 min  
 Delta R.T.: -0.004 min  
 Response: 39549970  
 Conc: 482.42 ng/ml



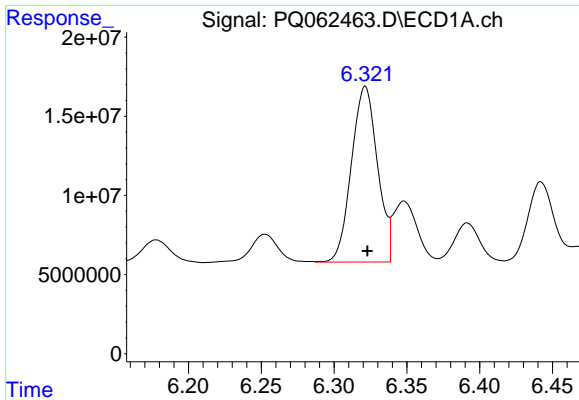
#31 AR-1260-1

R.T.: 6.060 min  
 Delta R.T.: -0.002 min  
 Response: 113094565  
 Conc: 479.35 ng/ml



#31 AR-1260-1

R.T.: 5.169 min  
 Delta R.T.: -0.005 min  
 Response: 82526561  
 Conc: 495.50 ng/ml



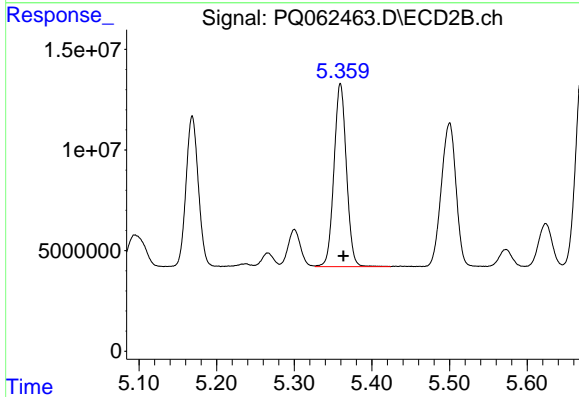
#32 AR-1260-2

R.T.: 6.321 min  
 Delta R.T.: -0.001 min  
 Response: 137994693  
 Conc: 477.80 ng/ml

Instrument :  
 ECD\_Q  
 ClientSampleId :  
 AR1660CCC500

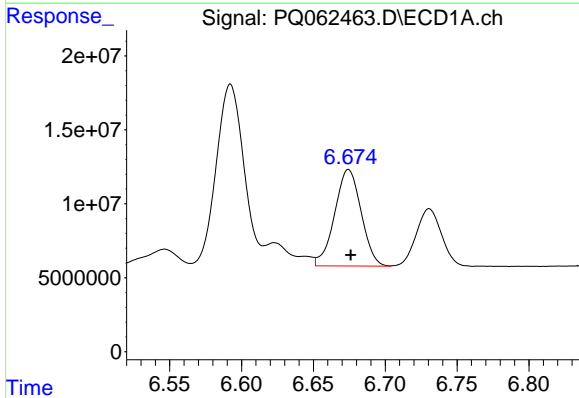
Manual Integrations  
 APPROVED

Reviewed By :Yogesh Patel 07/21/2023  
 Supervised By :Ankita Jodhani 07/21/2023



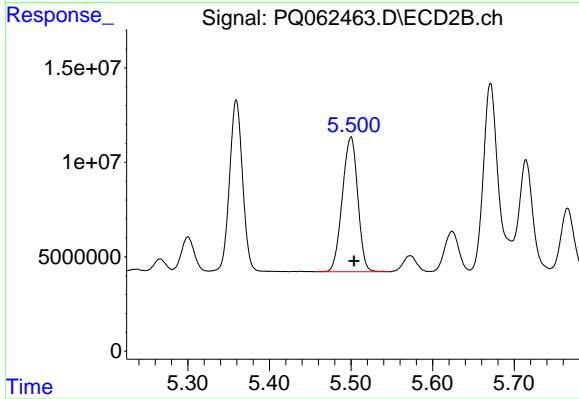
#32 AR-1260-2

R.T.: 5.359 min  
 Delta R.T.: -0.004 min  
 Response: 101314248  
 Conc: 487.21 ng/ml



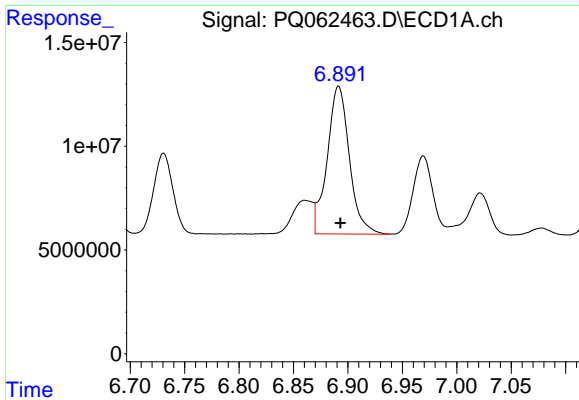
#33 AR-1260-3

R.T.: 6.674 min  
 Delta R.T.: -0.002 min  
 Response: 83770317  
 Conc: 474.41 ng/ml



#33 AR-1260-3

R.T.: 5.500 min  
 Delta R.T.: -0.004 min  
 Response: 93759234  
 Conc: 481.91 ng/ml



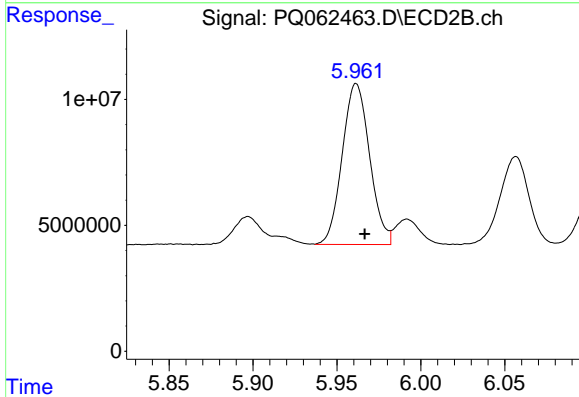
#34 AR-1260-4

R.T.: 6.891 min  
 Delta R.T.: -0.002 min  
 Response: 101211045  
 Conc: 480.47 ng/ml

Instrument :  
 ECD\_Q  
 ClientSampleId :  
 AR1660CCC500

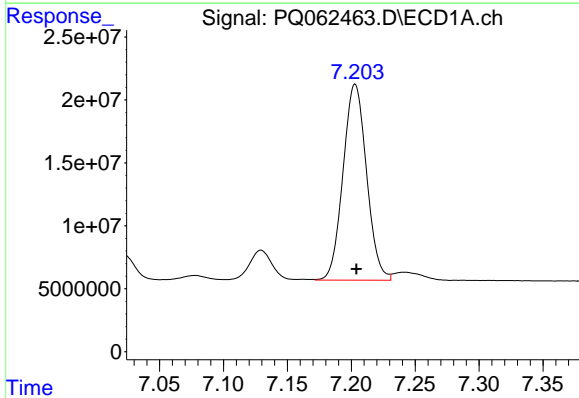
Manual Integrations  
 APPROVED

Reviewed By :Yogesh Patel 07/21/2023  
 Supervised By :Ankita Jodhani 07/21/2023



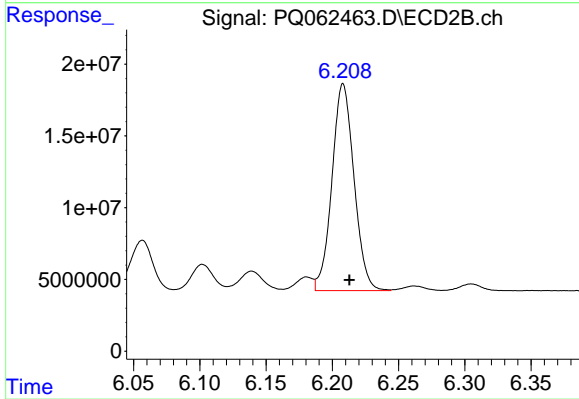
#34 AR-1260-4

R.T.: 5.962 min  
 Delta R.T.: -0.005 min  
 Response: 72569438  
 Conc: 497.52 ng/ml



#35 AR-1260-5

R.T.: 7.203 min  
 Delta R.T.: 0.000 min  
 Response: 199644310  
 Conc: 486.22 ng/ml



#35 AR-1260-5

R.T.: 6.208 min  
 Delta R.T.: -0.005 min  
 Response: 167083880  
 Conc: 503.18 ng/ml